



Nelson Velez
New Mexico Oil Conservation Division
1220 South St. Francis Drive
Santa Fe, NM 87505

Incident # **nAPP2406628203**

The Central Basin SWD #001 API# 30-045-34426 is in Unit N, Section 09, Township 28 North, Range 13 West, San Juan County, New Mexico.

RE: The cause of the release was determined that the motor failed was from the SWD and resulted in the release on pad. The estimated release volume was 6 BBLS and 6 BBLS were recovered via water truck. Volume lost was calculated using telemetry.

Dear Mr. Velez,

On March 1, 2024, LOGOS CENTRAL BASIN SWD #001 SWD Motor at the pump house experienced a failure resulting in 6 barrels of produced water released on location, no fluids left the vicinity and water truck was able to recover 6 barrels of free liquid.

The release size was 13'x52x2''' equaling 556 sq ft in the release are. The release area was contained on pad. Due to the release area fluid being removed quickly LOGOS was able to skim the release area with a water truck. LOGOS complied with 19.15.29 when remediation occurs.


The Central Basin SWD #001 is in the San Juan Basin. The Ojo Alamo is a sequence of interbedded sandstones, conglomeratic sandstone, and shales deposited in an alluvial and fluvial environment. The formation accumulated in broad, wet, alluvial aprons. Groundwater is associated with the alluvial and fluvial sandstone aquifers; hence it is controlled by the distribution of these sands.

Reference:

Stone W.J., Lyford F.P., Frenzel P.F., Mizell N.H., and Padgett E.T.: Hydrology and water resources of San Juan Basin, New Mexico Hydrologic Report 6, 1983.

The attached sitting criteria demonstrates that the area is not within a floodplain or wetlands nor over a karst and the depth to ground water is greater than 100' below ground surface.

On May 31, 2024, LOGOS representatives performed sampling. A representative from the NMOCD nor the BLM were present at the confirmation sampling. 3 (5)- point confirmation samples were collected from the release area. The sampling area was 1,352 sq ft in size (3) 200 sq ft (5)- point confirmation samples were collected. No odor or staining was observed during the sampling event. The sample results were below regulatory standards in all constituents. Please refer to Table 1 for analytical results.

Table I Closure Criteria for Soils Impacted by a Release			
Minimum depth below any point within the horizontal boundary of the release to ground water less than 10,000 mg/l TDS	Constituent	Method*	Limit**
≤ 50 feet	Chloride***	EPA 300.0 or SM4500 C1 B	600 mg/kg
	TPH (GRO+DRO+MRO)	EPA SW-846 Method 8015M	100 mg/kg
	BTEX	EPA SW-846 Method 8021B or 8260B	50 mg/kg
	Benzene	EPA SW-846 Method 8021B or 8260B	10 mg/kg
51 feet-100 feet	Chloride***	EPA 300.0 or SM4500 C1 B	10,000 mg/kg
	TPH (GRO+DRO+MRO)	EPA SW-846 Method 8015M	2,500 mg/kg
	GRO+DRO	EPA SW-846 Method 8015M	1,000 mg/kg
	BTEX	EPA SW-846 Method 8021B or 8260B	50 mg/kg
	Benzene	EPA SW-846 Method 8021B or 8260B	10 mg/kg
>100 feet 	Chloride***	EPA 300.0 or SM4500 C1 B	20,000 mg/kg
	TPH (GRO+DRO+MRO)	EPA SW-846 Method 8015M	2,500 mg/kg
	GRO+DRO	EPA SW-846 Method 8015M	1,000 mg/kg
	BTEX	EPA SW-846 Method 8021B or 8260B	50 mg/kg
	Benzene	EPA SW-846 Method 8021B or 8260B	10 mg/kg

Release Area



Sample Area



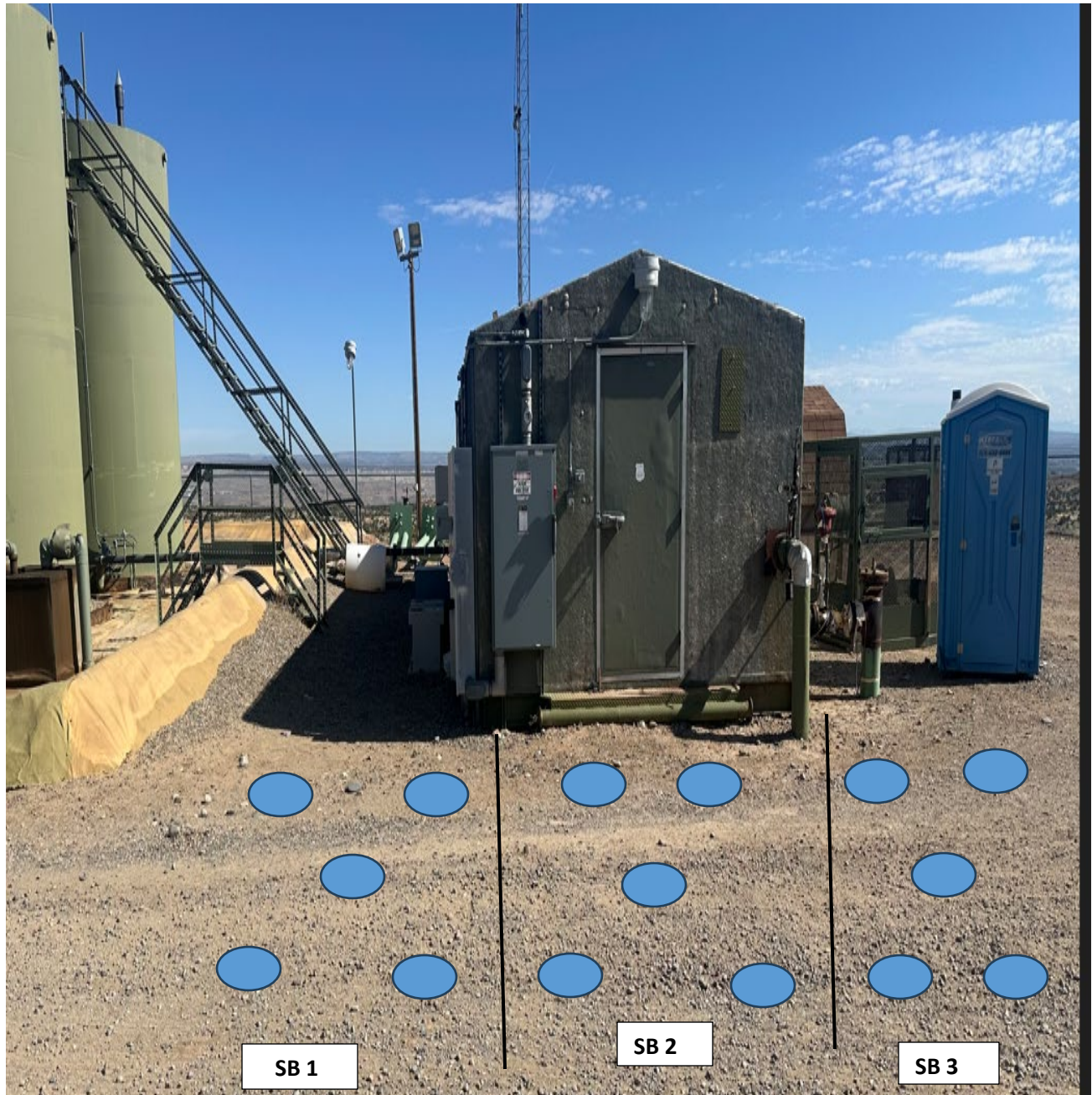
5 -point composite sample area of samples colled SB 1, SB 2 and SB 3

Table 1

5/31/2024 Analytical Results								
Sample Description	Date 5/31/2024		EPA Method 8015		EPA Method 8021		EPA Method 300.0	
			GRO (mg/kg)	DRO (mg/kg)	ORO (mg/kg)	Benzene (mg/kg)	Total BTEX (mg/kg)	Chlorides (mg/kg)
19.15.29.13 (D) NMAC			1000 mg/kg			10 mg/kg	50 mg/kg	600 mg/kg
19.15.29.12 NMAC			1000 mg/kg					20,000 mg/kg
			2500 mg/kg					
SB-1 @ 2'	5/31/2024		ND	32.7	ND	ND	ND	631
SB-2 @ 2'	5/31/2024		ND	36.1	54.6	ND	ND	240
SB-3 @ 2'	5/31/2024		ND	32.9	55.0	ND	ND	226

The samples that were collected were placed into individual laboratory 4-ounce jars, capped head space free and transported on ice to Envirotech. The samples were analyzed for TPH (GRO/DRO/ORO) using EPA Method 8015D; benzene, Toluene, ethylbenzene and total xylenes (BTEX) using EPA Method 8021B and chlorides using EPA Method 300.0.





Final clean up Area



Thank you,

Vanessa Fields

Regulatory Manager

Email: vfields@logosresourcesllc.com

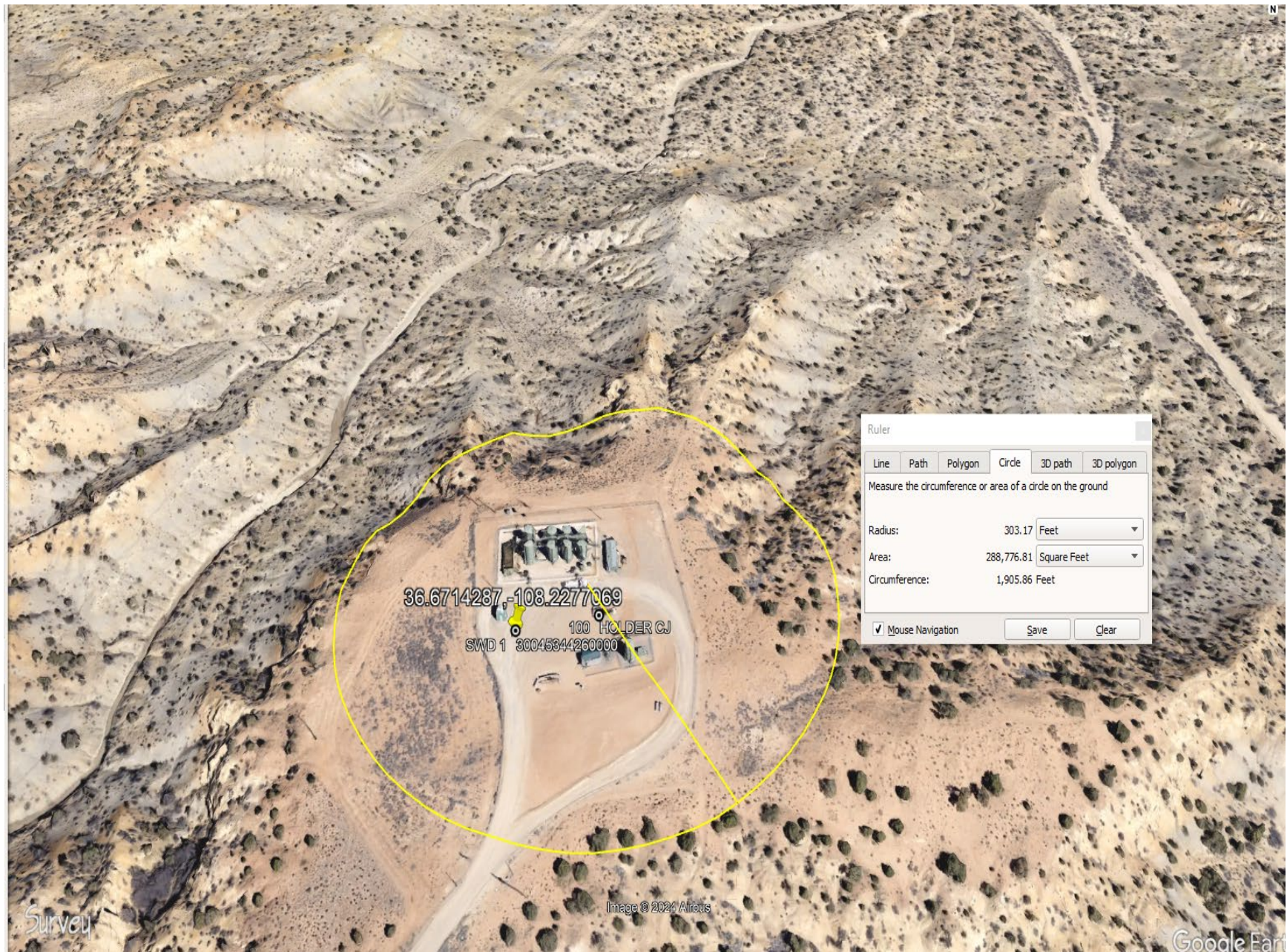
Office: 505-787-2218

Cell: 505-320-1243



Central Basin SWD# 001 Sitting Criteria 300' Radius Map

Release of 6 BBLS was determined by soil type sandy loom and release area 13'x52x2"



Hydrogeologic Data:

100-year Floodplain:

The temporary pit for the Central Basin SWD #1 is located outside of all nearby flood boundaries.

Site Specific:

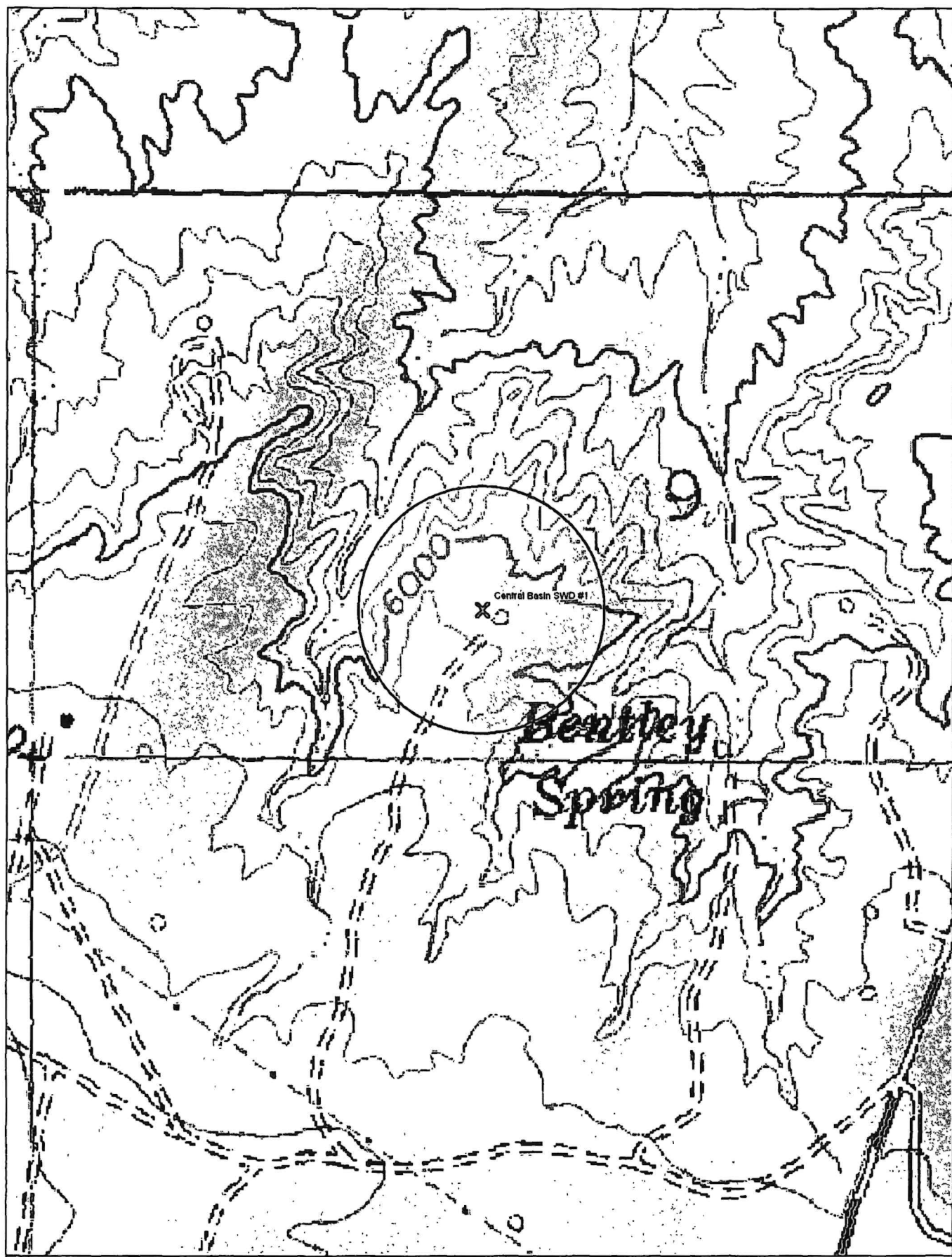
The Ojo Alamo formation is the highest water bearing zone at this site. It is the lowest Tertiary rock unit in the San Basin. The formation occurs at the surface to a depth of 200' at the Central Basin SWD #1 location and ranges from 150' to 400' in this township and range. Based on topographic maps and aerial photos, there does not appear to be any sandy areas located within drainages that may potentially hold shallow ground water. Drainages in the area with elevation changes suggest that ground water depths, if any, will be below 100'. The only potentially unstable areas in the region are over subsurface coal mines. This pit is not located over a subsurface mine.

Geologic Summary:

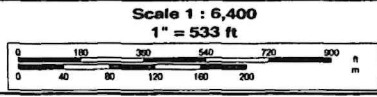
The Ojo Alamo is a sequence of interbedded sandstones, conglomeratic sandstone, and shales deposited in an alluvial and fluvial environment. The formation accumulated in broad, wet, alluvial aprons. Groundwater is associated with the alluvial and fluvial sandstone aquifers, hence it is controlled by the distribution of these sands.

Reference:

Stone W.J., Lyford F.P., Frenzel P.F., Mizell N.H., and Padgett E.T.: Hydrology and water resources of San Juan Basin, New Mexico Hydrologic Report 6, 1983.



© 2002 DeLorme. 3-D TopoQuads®. Data copyright of content owner.
www.delorme.com



TN
MN
11.3°E

New Mexico Office of the State Engineer
POD Reports and Downloads

Township: 28N Range: 13W Sections: 9

NAD27 X: Y: Zone:  Search Radius:

County:  Basin:  Number: Suffix:

Owner Name: (First) (Last) ☐ Non-Domestic ☐ Domestic
☒ All

POD / Surface Data Report

Avg Depth to Water Report

Water Column Report

Clear Form

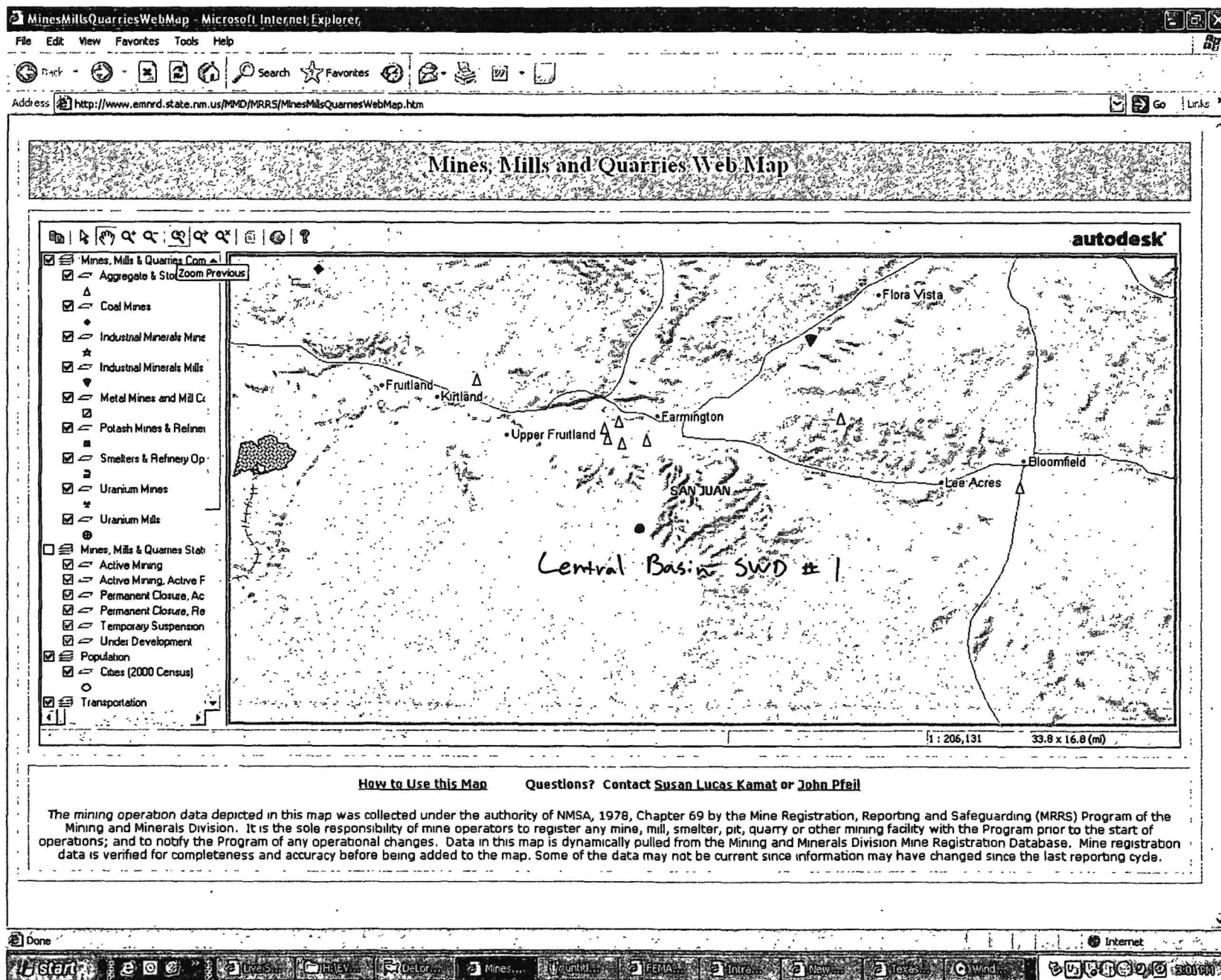
iWATERS Menu

Help

AVERAGE DEPTH OF WATER REPORT 07/07/2008


Bsn	Tws	Rng	Sec	Zone	X	Y	Wells	(Depth Water in Feet)		
								Min	Max	Avg

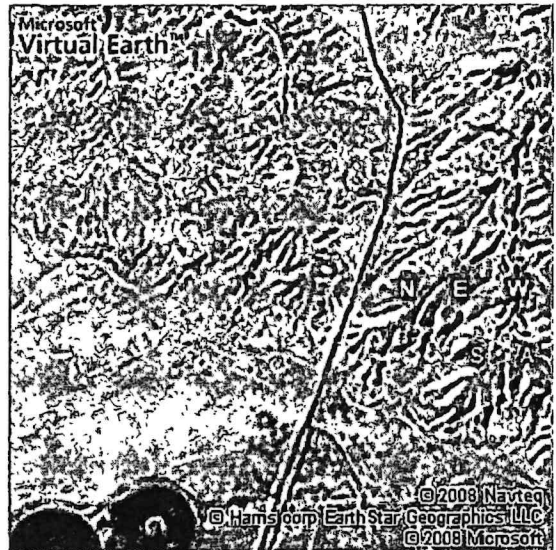
No Records found, try again

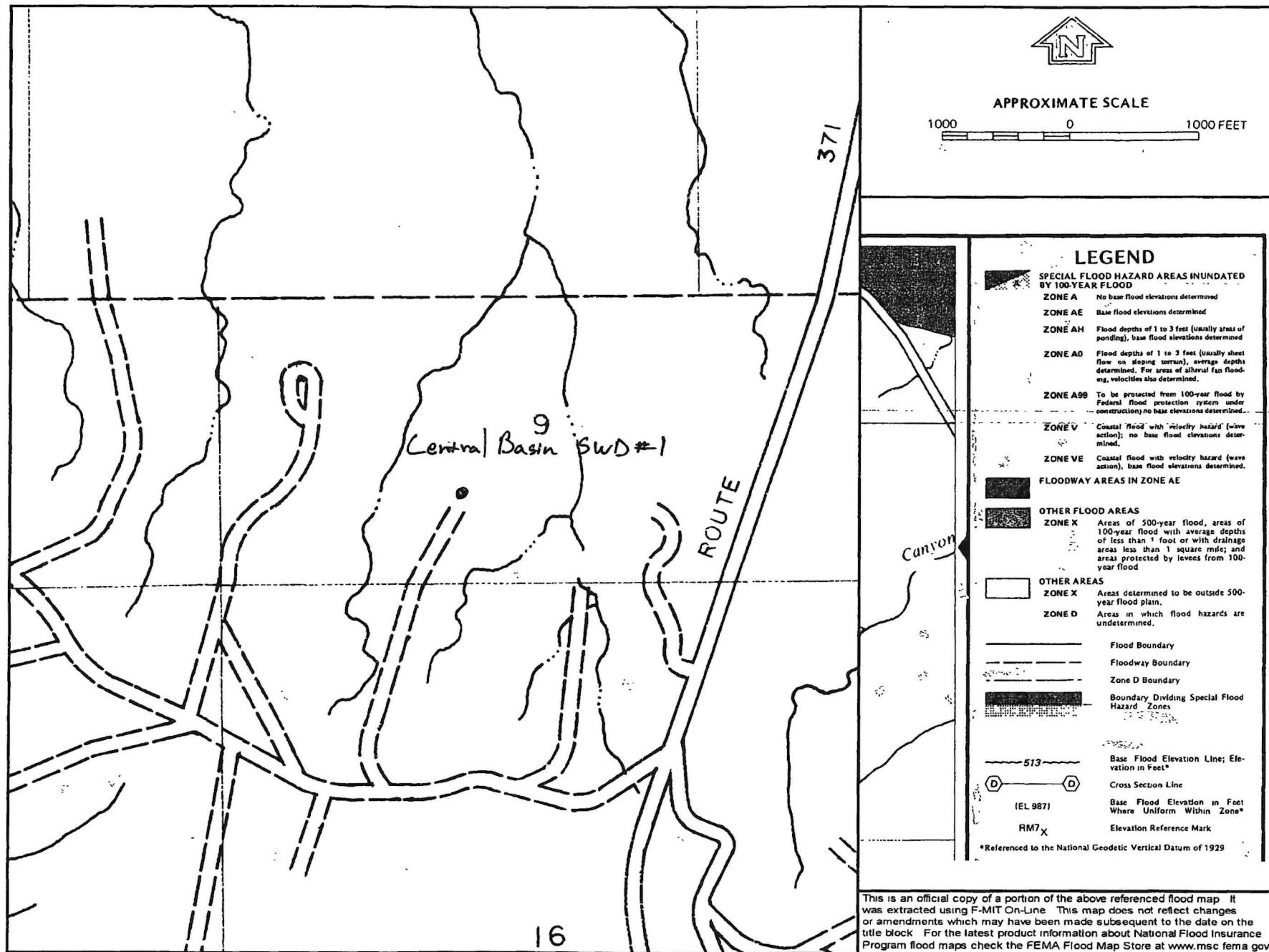




Central Basin SWD #1 •

 **NEW! Try Live Search 411**
Dial 1-800-CALL-411 for latest info





District I
1625 N. French Dr., Hobbs, NM 88240
Phone:(575) 393-6161 Fax:(575) 393-0720
District II
811 S. First St., Artesia, NM 88210
Phone:(575) 748-1283 Fax:(575) 748-9720
District III
1000 Rio Brazos Rd., Aztec, NM 87410
Phone:(505) 334-6178 Fax:(505) 334-6170
District IV
1220 S. St Francis Dr., Santa Fe, NM 87505
Phone:(505) 476-3470 Fax:(505) 476-3462

State of New Mexico
Energy, Minerals and Natural Resources
Oil Conservation Division
1220 S. St Francis Dr.
Santa Fe, NM 87505

QUESTIONS

Action 321399

QUESTIONS

Operator: LOGOS OPERATING, LLC 2010 Afton Place Farmington, NM 87401	OGRID: 289408
	Action Number: 321399
	Action Type: [C-141] Initial C-141 (C-141-v-Initial)

QUESTIONS

Prerequisites	
Incident ID (n#)	nAPP2406628203
Incident Name	NAPP2406628203 CENTRAL BASIN SWD # 001 @ 30-045-34426
Incident Type	Produced Water Release
Incident Status	Initial C-141 Received
Incident Well	[30-045-34426] CENTRAL BASIN SWD #001

Location of Release Source	
Please answer all the questions in this group.	
Site Name	Central Basin SWD # 001
Date Release Discovered	03/01/2024
Surface Owner	Federal

Incident Details	
Please answer all the questions in this group.	
Incident Type	Produced Water Release
Did this release result in a fire or is the result of a fire	No
Did this release result in any injuries	No
Has this release reached or does it have a reasonable probability of reaching a watercourse	No
Has this release endangered or does it have a reasonable probability of endangering public health	No
Has this release substantially damaged or will it substantially damage property or the environment	No
Is this release of a volume that is or may with reasonable probability be detrimental to fresh water	No

Nature and Volume of Release	
Material(s) released, please answer all that apply below. Any calculations or specific justifications for the volumes provided should be attached to the follow-up C-141 submission.	
Crude Oil Released (bbls) Details	Not answered.
Produced Water Released (bbls) Details	Cause: Equipment Failure Injection Well Produced Water Released: 6 BBL Recovered: 6 BBL Lost: 0 BBL.
Is the concentration of chloride in the produced water >10,000 mg/l	No
Condensate Released (bbls) Details	Not answered.
Natural Gas Vented (Mcf) Details	Not answered.
Natural Gas Flared (Mcf) Details	Not answered.
Other Released Details	Not answered.
Are there additional details for the questions above (i.e. any answer containing Other, Specify, Unknown, and/or Fire, or any negative lost amounts)	Release was determined by soil type (sandy loam) and release size of 13'x52'x2"

District I

1625 N. French Dr., Hobbs, NM 88240
Phone:(575) 393-6161 Fax:(575) 393-0720

District II

811 S. First St., Artesia, NM 88210
Phone:(575) 748-1283 Fax:(575) 748-9720

District III

1000 Rio Brazos Rd., Aztec, NM 87410
Phone:(505) 334-6178 Fax:(505) 334-6170

District IV

1220 S. St Francis Dr., Santa Fe, NM 87505
Phone:(505) 476-3470 Fax:(505) 476-3462

State of New Mexico
Energy, Minerals and Natural Resources
Oil Conservation Division
1220 S. St Francis Dr.
Santa Fe, NM 87505

QUESTIONS, Page 2

Action 321399

QUESTIONS (continued)

Operator: LOGOS OPERATING, LLC 2010 Afton Place Farmington, NM 87401	OGRID: 289408
	Action Number: 321399
	Action Type: [C-141] Initial C-141 (C-141-v-Initial)

QUESTIONS

Nature and Volume of Release (continued)	
Is this a gas only submission (i.e. only significant Mcf values reported)	No, according to supplied volumes this does not appear to be a "gas only" report.
Was this a major release as defined by Subsection A of 19.15.29.7 NMAC	No
Reasons why this would be considered a submission for a notification of a major release	Unavailable.
With the implementation of the 19.15.27 NMAC (05/25/2021), venting and/or flaring of natural gas (i.e. gas only) are to be submitted on the C-129 form.	

Initial Response

The responsible party must undertake the following actions immediately unless they could create a safety hazard that would result in injury.

The source of the release has been stopped	True
The impacted area has been secured to protect human health and the environment	True
Released materials have been contained via the use of berms or dikes, absorbent pads, or other containment devices	True
All free liquids and recoverable materials have been removed and managed appropriately	True
If all the actions described above have not been undertaken, explain why	Not answered.

Per Paragraph (4) of Subsection B of 19.15.29.8 NMAC the responsible party may commence remediation immediately after discovery of a release. If remediation has begun, please prepare and attach a narrative of actions to date in the follow-up C-141 submission. If remedial efforts have been successfully completed or if the release occurred within a lined containment area (see Subparagraph (a) of Paragraph (5) of Subsection A of 19.15.29.11 NMAC), please prepare and attach all information needed for closure evaluation in the follow-up C-141 submission.

I hereby certify that the information given above is true and complete to the best of my knowledge and understand that pursuant to OCD rules and regulations all operators are required to report and/or file certain release notifications and perform corrective actions for releases which may endanger public health or the environment. The acceptance of a C-141 report by the OCD does not relieve the operator of liability should their operations have failed to adequately investigate and remediate contamination that pose a threat to groundwater, surface water, human health or the environment. In addition, OCD acceptance of a C-141 report does not relieve the operator of responsibility for compliance with any other federal, state, or local laws and/or regulations.

I hereby agree and sign off to the above statement	Name: Vanessa Fields Title: Regulatory Manager Email: vfields@logosresourcesllc.com Date: 03/07/2024
--	---

District I
1625 N. French Dr., Hobbs, NM 88240
Phone:(575) 393-6161 Fax:(575) 393-0720

District II
811 S. First St., Artesia, NM 88210
Phone:(575) 748-1283 Fax:(575) 748-9720

District III
1000 Rio Brazos Rd., Aztec, NM 87410
Phone:(505) 334-6178 Fax:(505) 334-6170

District IV
1220 S. St Francis Dr., Santa Fe, NM 87505
Phone:(505) 476-3470 Fax:(505) 476-3462

State of New Mexico
Energy, Minerals and Natural Resources
Oil Conservation Division
1220 S. St Francis Dr.
Santa Fe, NM 87505

QUESTIONS, Page 3

Action 321399

QUESTIONS (continued)

Operator: LOGOS OPERATING, LLC 2010 Afton Place Farmington, NM 87401	OGRID: 289408
	Action Number: 321399
	Action Type: [C-141] Initial C-141 (C-141-v-Initial)

QUESTIONS

Site Characterization

Please answer all the questions in this group (only required when seeking remediation plan approval and beyond). This information must be provided to the appropriate district office no later than 90 days after the release discovery date.

What is the shallowest depth to groundwater beneath the area affected by the release in feet below ground surface (ft bgs)	Between 100 and 500 (ft.)
What method was used to determine the depth to ground water	Attached Document
Did this release impact groundwater or surface water	No

What is the minimum distance, between the closest lateral extents of the release and the following surface areas:

A continuously flowing watercourse or any other significant watercourse	Between 500 and 1000 (ft.)
Any lakebed, sinkhole, or playa lake (measured from the ordinary high-water mark)	Greater than 5 (mi.)
An occupied permanent residence, school, hospital, institution, or church	Greater than 5 (mi.)
A spring or a private domestic fresh water well used by less than five households for domestic or stock watering purposes	Greater than 5 (mi.)
Any other fresh water well or spring	Greater than 5 (mi.)
Incorporated municipal boundaries or a defined municipal fresh water well field	Greater than 5 (mi.)
A wetland	Greater than 5 (mi.)
A subsurface mine	Greater than 5 (mi.)
An (non-karst) unstable area	Greater than 5 (mi.)
Categorize the risk of this well / site being in a karst geology	None
A 100-year floodplain	Greater than 5 (mi.)
Did the release impact areas not on an exploration, development, production, or storage site	No

Remediation Plan

Please answer all the questions that apply or are indicated. This information must be provided to the appropriate district office no later than 90 days after the release discovery date.

Requesting a remediation plan approval with this submission	No
---	----

The OCD recognizes that proposed remediation measures may have to be minimally adjusted in accordance with the physical realities encountered during remediation. If the responsible party has any need to significantly deviate from the remediation plan proposed, then it should consult with the division to determine if another remediation plan submission is required.

District I
1625 N. French Dr., Hobbs, NM 88240
Phone:(575) 393-6161 Fax:(575) 393-0720
District II
811 S. First St., Artesia, NM 88210
Phone:(575) 748-1283 Fax:(575) 748-9720
District III
1000 Rio Brazos Rd., Aztec, NM 87410
Phone:(505) 334-6178 Fax:(505) 334-6170
District IV
1220 S. St Francis Dr., Santa Fe, NM 87505
Phone:(505) 476-3470 Fax:(505) 476-3462

State of New Mexico
Energy, Minerals and Natural Resources
Oil Conservation Division
1220 S. St Francis Dr.
Santa Fe, NM 87505

CONDITIONS

Action 321399

CONDITIONS

Operator: LOGOS OPERATING, LLC 2010 Afton Place Farmington, NM 87401	OGRID: 289408
	Action Number: 321399
	Action Type: [C-141] Initial C-141 (C-141-v-Initial)

CONDITIONS

Created By	Condition	Condition Date
scwells	None	3/7/2024

National Flood Hazard Layer FIRMette



108°13'58"W 36°40'32"N

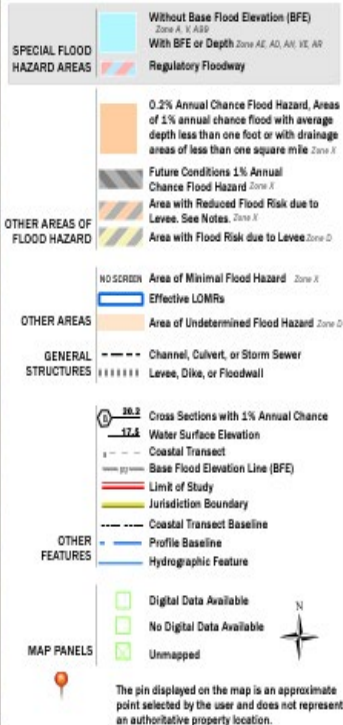


0 250 500 1,000 1,500 2,000 Feet 1:6,000

Basemap Imagery Source: USGS National Map 2023

Legend

SEE FIS REPORT FOR DETAILED LEGEND AND INDEX MAP FOR FIRM PANEL LAYOUT



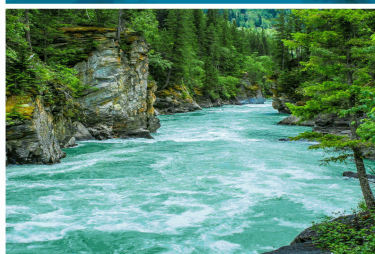
This map complies with FEMA's standards for the use of digital flood maps if it is not void as described below. The basemap shown complies with FEMA's basemap accuracy standards.

The flood hazard information is derived directly from the authoritative NFHL web services provided by FEMA. This map was exported on 8/27/2024 at 4:10 PM and does not reflect changes or amendments subsequent to this date and time. The NFHL and effective information may change or become superseded by new data over time.

This map image is void if the one or more of the following map elements do not appear: basemap imagery, flood zone labels, legend, scale bar, map creation date, community identifiers, FIRM panel number, and FIRM effective date. Map images for unmapped and unmodernized areas cannot be used for regulatory purposes.

Report to:

Vanessa Fields



envirotech

Practical Solutions for a Better Tomorrow

Analytical Report

Logos Resources

Project Name: Central Basin SWD #1

Work Order: E405403

Job Number: 12035-0114

Received: 5/31/2024

Revision: 1

Report Reviewed By:

Walter Hinchman
Laboratory Director
6/5/24

5796 U.S. Hwy 64
Farmington, NM 87401

Phone: (505) 632-1881
Envirotech-inc.com



Envirotech Inc. certifies the test results meet all requirements of TNI unless noted otherwise.
Statement of Data Authenticity: Envirotech Inc. attests the data reported has not been altered in any way.
Partial or incomplete reproduction of this report is prohibited, unless approved by Envirotech Inc.
Envirotech Inc. holds the Utah TNI certification NM00979 for data reported.
Envirotech Inc. holds the Texas TNI certification T104704557 for data reported.

Date Reported: 6/5/24

Vanessa Fields
2010 Afton Place
Farmington, NM 87401



Project Name: Central Basin SWD #1
Workorder: E405403
Date Received: 5/31/2024 10:42:00AM

Vanessa Fields,

Thank you for choosing Envirotech, Inc. as your analytical testing laboratory for the sample(s) received on, 5/31/2024 10:42:00AM, under the Project Name: Central Basin SWD #1.

The analytical test results summarized in this report with the Project Name: Central Basin SWD #1 apply to the individual samples collected, identified and submitted bearing the project name on the enclosed chain-of-custody. Subcontracted sample analyses not conducted by Envirotech, Inc., are attached in full as issued by the subcontract laboratory.

Please review the Chain-of-Custody (COC) and Sample Receipt Checklist (SRC) for any issues regarding sample receipt temperature, containers, preservation etc. To best understand your test results, review the entire report summarizing your sample data and the associated quality control batch data.

All reported data in this analytical report were analyzed according to the referenced method(s) and are in compliance with the latest NELAC/TNI standards, unless otherwise noted. Samples or analytical quality control parameters not meeting specific QC criteria are qualified with a data flag. Data flag definitions are located in the Notes and Definitions section of this analytical report.

If you have any questions concerning this report, please feel free to contact Envirotech, Inc.

Respectfully,

Walter Hinchman
Laboratory Director
Office: 505-632-1881
Cell: 775-287-1762
whinchman@envirotech-inc.com

Raina Schwanz
Laboratory Administrator
Office: 505-632-1881
rainaschwanz@envirotech-inc.com

Alexa Michaels
Sample Custody Officer
Office: 505-632-1881
labadmin@envirotech-inc.com

Field Offices:

Southern New Mexico Area

Lynn Jarboe
Laboratory Technical Representative
Office: 505-421-LABS(5227)
Cell: 505-320-4759
ljjarboe@envirotech-inc.com

Michelle Golzaes
Client Representative
Office: 505-421-LABS(5227)
Cell: 505-947-8222
mgonzales@envirotech-inc.com

Envirotech Web Address: www.envirotech-inc.com

Table of Contents

Title Page	1
Cover Page	2
Table of Contents	3
Sample Summary	4
Sample Data	5
SB1	5
SB2	6
SB3	7
QC Summary Data	8
QC - Volatile Organics by EPA 8021B	8
QC - Nonhalogenated Organics by EPA 8015D - GRO	9
QC - Nonhalogenated Organics by EPA 8015D - DRO/ORO	10
QC - Anions by EPA 300.0/9056A	11
Definitions and Notes	12
Chain of Custody etc.	13

Sample Summary

Logos Resources	Project Name:	Central Basin SWD #1	Reported:
2010 Afton Place	Project Number:	12035-0114	
Farmington NM, 87401	Project Manager:	Vanessa Fields	06/05/24 11:23

Client Sample ID	Lab Sample ID	Matrix	Sampled	Received	Container
SB1	E405403-01A	Soil	05/31/24	05/31/24	Glass Jar, 2 oz.
SB2	E405403-02A	Soil	05/31/24	05/31/24	Glass Jar, 2 oz.
SB3	E405403-03A	Soil	05/31/24	05/31/24	Glass Jar, 2 oz.



Sample Data

Logos Resources 2010 Afton Place Farmington NM, 87401	Project Name: Central Basin SWD #1 Project Number: 12035-0114 Project Manager: Vanessa Fields	Reported: 6/5/2024 11:23:46AM
---	---	----------------------------------

SB1
E405403-01

Analyte	Result	Reporting Limit	Dilution	Prepared	Analyzed	Notes
Volatile Organics by EPA 8021B	mg/kg	mg/kg	Analyst: IY		Batch: 2422106	
Benzene	ND	0.0250	1	05/31/24	06/03/24	
Ethylbenzene	ND	0.0250	1	05/31/24	06/03/24	
Toluene	ND	0.0250	1	05/31/24	06/03/24	
o-Xylene	ND	0.0250	1	05/31/24	06/03/24	
p,m-Xylene	ND	0.0500	1	05/31/24	06/03/24	
Total Xylenes	ND	0.0250	1	05/31/24	06/03/24	
Surrogate: 4-Bromochlorobenzene-PID	91.8 %	70-130		05/31/24	06/03/24	
Nonhalogenated Organics by EPA 8015D - GRO	mg/kg	mg/kg	Analyst: IY		Batch: 2422106	
Gasoline Range Organics (C6-C10)	ND	20.0	1	05/31/24	06/03/24	
Surrogate: 1-Chloro-4-fluorobenzene-FID	96.5 %	70-130		05/31/24	06/03/24	
Nonhalogenated Organics by EPA 8015D - DRO/ORO	mg/kg	mg/kg	Analyst: KM		Batch: 2423003	
Diesel Range Organics (C10-C28)	32.7	25.0	1	06/03/24	06/05/24	
Oil Range Organics (C28-C36)	ND	50.0	1	06/03/24	06/05/24	
Surrogate: n-Nonane	109 %	50-200		06/03/24	06/05/24	
Anions by EPA 300.0/9056A	mg/kg	mg/kg	Analyst: DT		Batch: 2422117	
Chloride	631	20.0	1	05/31/24	06/01/24	



Sample Data

Logos Resources
2010 Afton Place
Farmington NM, 87401

Project Name: Central Basin SWD #1
Project Number: 12035-0114
Project Manager: Vanessa Fields

Reported:
6/5/2024 11:23:46AM

SB2

E405403-02

Analyte	Result	Reporting Limit	Dilution	Prepared	Analyzed	Notes
Volatile Organics by EPA 8021B						
	mg/kg	mg/kg		Analyst: IY		Batch: 2422106
Benzene	ND	0.0250	1	05/31/24	06/03/24	
Ethylbenzene	ND	0.0250	1	05/31/24	06/03/24	
Toluene	ND	0.0250	1	05/31/24	06/03/24	
o-Xylene	ND	0.0250	1	05/31/24	06/03/24	
p,m-Xylene	ND	0.0500	1	05/31/24	06/03/24	
Total Xylenes	ND	0.0250	1	05/31/24	06/03/24	
<i>Surrogate: 4-Bromochlorobenzene-PID</i>						
	91.2 %	70-130		05/31/24	06/03/24	
Nonhalogenated Organics by EPA 8015D - GRO						
	mg/kg	mg/kg		Analyst: IY		Batch: 2422106
Gasoline Range Organics (C6-C10)	ND	20.0	1	05/31/24	06/03/24	
<i>Surrogate: 1-Chloro-4-fluorobenzene-FID</i>						
	97.7 %	70-130		05/31/24	06/03/24	
Nonhalogenated Organics by EPA 8015D - DRO/ORO						
	mg/kg	mg/kg		Analyst: KM		Batch: 2423003
Diesel Range Organics (C10-C28)	36.1	25.0	1	06/03/24	06/05/24	
Oil Range Organics (C28-C36)	54.6	50.0	1	06/03/24	06/05/24	
<i>Surrogate: n-Nonane</i>						
	100 %	50-200		06/03/24	06/05/24	
Anions by EPA 300.0/9056A						
	mg/kg	mg/kg		Analyst: DT		Batch: 2422117
Chloride	240	20.0	1	05/31/24	06/01/24	



Sample Data

Logos Resources
2010 Afton Place
Farmington NM, 87401

Project Name: Central Basin SWD #1
Project Number: 12035-0114
Project Manager: Vanessa Fields

Reported:
6/5/2024 11:23:46AM

SB3

E405403-03

Analyte	Result	Reporting Limit	Dilution	Prepared	Analyzed	Notes
Volatile Organics by EPA 8021B						
	mg/kg	mg/kg		Analyst: IY		Batch: 2422106
Benzene	ND	0.0250	1	05/31/24	06/03/24	
Ethylbenzene	ND	0.0250	1	05/31/24	06/03/24	
Toluene	ND	0.0250	1	05/31/24	06/03/24	
o-Xylene	ND	0.0250	1	05/31/24	06/03/24	
p,m-Xylene	ND	0.0500	1	05/31/24	06/03/24	
Total Xylenes	ND	0.0250	1	05/31/24	06/03/24	
<i>Surrogate: 4-Bromochlorobenzene-PID</i>						
	92.0 %	70-130		05/31/24	06/03/24	
Nonhalogenated Organics by EPA 8015D - GRO						
	mg/kg	mg/kg		Analyst: IY		Batch: 2422106
Gasoline Range Organics (C6-C10)	ND	20.0	1	05/31/24	06/03/24	
<i>Surrogate: 1-Chloro-4-fluorobenzene-FID</i>						
	97.3 %	70-130		05/31/24	06/03/24	
Nonhalogenated Organics by EPA 8015D - DRO/ORO						
	mg/kg	mg/kg		Analyst: KM		Batch: 2423003
Diesel Range Organics (C10-C28)	32.9	25.0	1	06/03/24	06/05/24	
Oil Range Organics (C28-C36)	55.0	50.0	1	06/03/24	06/05/24	
<i>Surrogate: n-Nonane</i>						
	109 %	50-200		06/03/24	06/05/24	
Anions by EPA 300.0/9056A						
	mg/kg	mg/kg		Analyst: DT		Batch: 2422117
Chloride	226	20.0	1	05/31/24	06/01/24	



QC Summary Data

Logos Resources	Project Name:	Central Basin SWD #1	Reported:
2010 Afton Place	Project Number:	12035-0114	
Farmington NM, 87401	Project Manager:	Vanessa Fields	6/5/2024 11:23:46AM

Volatile Organics by EPA 8021B

Analyst: IY

Analyte	Result mg/kg	Reporting Limit mg/kg	Spike Level mg/kg	Source Result mg/kg	Rec %	Rec Limits %	RPD %	RPD Limit %	Notes
---------	-----------------	-----------------------------	-------------------------	---------------------------	----------	--------------------	----------	-------------------	-------

Blank (2422106-BLK1)

Prepared: 05/31/24 Analyzed: 06/03/24

Benzene	ND	0.0250							
Ethylbenzene	ND	0.0250							
Toluene	ND	0.0250							
o-Xylene	ND	0.0250							
p,m-Xylene	ND	0.0500							
Total Xylenes	ND	0.0250							
Surrogate: 4-Bromochlorobenzene-PID	7.40		8.00		92.5	70-130			

LCS (2422106-BS1)

Prepared: 05/31/24 Analyzed: 06/03/24

Benzene	4.55	0.0250	5.00		91.0	70-130			
Ethylbenzene	4.40	0.0250	5.00		88.0	70-130			
Toluene	4.48	0.0250	5.00		89.5	70-130			
o-Xylene	4.38	0.0250	5.00		87.7	70-130			
p,m-Xylene	8.96	0.0500	10.0		89.6	70-130			
Total Xylenes	13.3	0.0250	15.0		88.9	70-130			
Surrogate: 4-Bromochlorobenzene-PID	7.45		8.00		93.2	70-130			

LCS Dup (2422106-BSD1)

Prepared: 05/31/24 Analyzed: 06/03/24

Benzene	4.75	0.0250	5.00		95.0	70-130	4.31	20	
Ethylbenzene	4.60	0.0250	5.00		91.9	70-130	4.39	20	
Toluene	4.67	0.0250	5.00		93.5	70-130	4.30	20	
o-Xylene	4.58	0.0250	5.00		91.7	70-130	4.43	20	
p,m-Xylene	9.34	0.0500	10.0		93.4	70-130	4.12	20	
Total Xylenes	13.9	0.0250	15.0		92.8	70-130	4.23	20	
Surrogate: 4-Bromochlorobenzene-PID	7.45		8.00		93.2	70-130			



QC Summary Data

Logos Resources	Project Name:	Central Basin SWD #1	Reported:
2010 Afton Place	Project Number:	12035-0114	
Farmington NM, 87401	Project Manager:	Vanessa Fields	6/5/2024 11:23:46AM

Nonhalogenated Organics by EPA 8015D - GRO

Analyst: IY

Analyte	Result mg/kg	Reporting Limit mg/kg	Spike Level mg/kg	Source Result mg/kg	Rec %	Rec Limits %	RPD %	RPD Limit %	Notes
---------	-----------------	-----------------------------	-------------------------	---------------------------	----------	--------------------	----------	-------------------	-------

Blank (2422106-BLK1) Prepared: 05/31/24 Analyzed: 06/03/24

Gasoline Range Organics (C6-C10)	ND	20.0							
Surrogate: 1-Chloro-4-fluorobenzene-FID	7.73		8.00		96.7	70-130			

LCS (2422106-BS2) Prepared: 05/31/24 Analyzed: 06/03/24

Gasoline Range Organics (C6-C10)	48.9	20.0	50.0		97.7	70-130			
Surrogate: 1-Chloro-4-fluorobenzene-FID	7.97		8.00		99.7	70-130			

LCS Dup (2422106-BSD2) Prepared: 05/31/24 Analyzed: 06/03/24

Gasoline Range Organics (C6-C10)	46.4	20.0	50.0		92.8	70-130	5.17	20	
Surrogate: 1-Chloro-4-fluorobenzene-FID	7.95		8.00		99.4	70-130			



QC Summary Data

Logos Resources	Project Name:	Central Basin SWD #1	Reported:
2010 Afton Place	Project Number:	12035-0114	
Farmington NM, 87401	Project Manager:	Vanessa Fields	6/5/2024 11:23:46AM

Nonhalogenated Organics by EPA 8015D - DRO/ORO

Analyst: KM

Analyte	Result	Reporting Limit	Spike Level	Source Result	Rec	Rec Limits	RPD	RPD Limit	Notes
	mg/kg	mg/kg	mg/kg	mg/kg	%	%	%	%	

Blank (2423003-BLK1)					Prepared: 06/03/24 Analyzed: 06/04/24				
Diesel Range Organics (C10-C28)	ND	25.0							
Oil Range Organics (C28-C36)	ND	50.0							
Surrogate: n-Nonane	53.3		50.0		107	50-200			

LCS (2423003-BS1)					Prepared: 06/03/24 Analyzed: 06/04/24				
Diesel Range Organics (C10-C28)	266	25.0	250		107	38-132			
Surrogate: n-Nonane	55.2		50.0		110	50-200			

LCS Dup (2423003-BSD1)					Prepared: 06/03/24 Analyzed: 06/04/24				
Diesel Range Organics (C10-C28)	272	25.0	250		109	38-132	1.96	20	
Surrogate: n-Nonane	54.9		50.0		110	50-200			



QC Summary Data

Logos Resources	Project Name:	Central Basin SWD #1	Reported:
2010 Afton Place	Project Number:	12035-0114	
Farmington NM, 87401	Project Manager:	Vanessa Fields	6/5/2024 11:23:46AM

Anions by EPA 300.0/9056A

Analyst: DT

Analyte	Result	Reporting Limit	Spike Level	Source Result	Rec	Rec Limits	RPD	RPD Limit	Notes
	mg/kg	mg/kg	mg/kg	mg/kg	%	%	%	%	

Blank (2422117-BLK1)					Prepared: 05/31/24 Analyzed: 05/31/24				
Chloride	ND	20.0							
LCS (2422117-BS1)					Prepared: 05/31/24 Analyzed: 05/31/24				
Chloride	250	20.0	250		99.8	90-110			
LCS Dup (2422117-BSD1)					Prepared: 05/31/24 Analyzed: 05/31/24				
Chloride	250	20.0	250		100	90-110	0.304	20	

QC Summary Report Comment:
Calculations are based off of the raw (non-rounded) data. However, for reporting purposes all QC data is rounded to three significant figures.
Therefore, hand calculated values may differ slightly.



Definitions and Notes

Logos Resources	Project Name:	Central Basin SWD #1	
2010 Afton Place	Project Number:	12035-0114	Reported:
Farmington NM, 87401	Project Manager:	Vanessa Fields	06/05/24 11:23

- ND Analyte NOT DETECTED at or above the reporting limit
 - NR Not Reported
 - RPD Relative Percent Difference
 - DNI Did Not Ignite
 - DNR Did not react with the addition of acid or base.
- Note (1): Methods marked with ** are non-accredited methods.
- Note (2): Soil data is reported on an "as received" weight basis, unless reported otherwise.



Chain of Custody



envirotech

Envirotech Analytical Laboratory

Printed: 5/31/2024 11:21:36AM

Sample Receipt Checklist (SRC)

Instructions: Please take note of any NO checkmarks.

If we receive no response concerning these items within 24 hours of the date of this notice, all the samples will be analyzed as requested.

Client:	Logos Resources	Date Received:	05/31/24 10:42	Work Order ID:	E405403
Phone:	(505) 787-9100	Date Logged In:	05/31/24 11:00	Logged In By:	Angelina Pineda
Email:	vfields@logosresourcesllc.com	Due Date:	06/04/24 17:00 (2 day TAT)		

Chain of Custody (COC)

1. Does the sample ID match the COC? Yes
2. Does the number of samples per sampling site location match the COC? Yes
3. Were samples dropped off by client or carrier? Yes
4. Was the COC complete, i.e., signatures, dates/times, requested analyses? Yes
5. Were all samples received within holding time? Yes

Note: Analysis, such as pH which should be conducted in the field, i.e., 15 minute hold time, are not included in this discussion.

Carrier: Lacey GranilloComments/ResolutionSample Turn Around Time (TAT)

6. Did the COC indicate standard TAT, or Expedited TAT? Yes

Sample Cooler

7. Was a sample cooler received? Yes
8. If yes, was cooler received in good condition? Yes
9. Was the sample(s) received intact, i.e., not broken? Yes
10. Were custody/security seals present? No
11. If yes, were custody/security seals intact? NA
12. Was the sample received on ice? If yes, the recorded temp is 4°C, i.e., 6°±2°C? Yes

Note: Thermal preservation is not required, if samples are received w/i 15 minutes of sampling

13. If no visible ice, record the temperature. Actual sample temperature: 4°C

Sample Container

14. Are aqueous VOC samples present? No
15. Are VOC samples collected in VOA Vials? NA
16. Is the head space less than 6-8 mm (pea sized or less)? NA
17. Was a trip blank (TB) included for VOC analyses? NA
18. Are non-VOC samples collected in the correct containers? Yes
19. Is the appropriate volume/weight or number of sample containers collected? Yes

Field Label

20. Were field sample labels filled out with the minimum information:
 - Sample ID? Yes
 - Date/Time Collected? Yes
 - Collectors name? Yes

Sample Preservation

21. Does the COC or field labels indicate the samples were preserved? No
22. Are sample(s) correctly preserved? NA
24. Is lab filtration required and/or requested for dissolved metals? No

Multiphase Sample Matrix

26. Does the sample have more than one phase, i.e., multiphase? No
27. If yes, does the COC specify which phase(s) is to be analyzed? NA

Subcontract Laboratory

28. Are samples required to get sent to a subcontract laboratory? No
29. Was a subcontract laboratory specified by the client and if so who? NA Subcontract Lab: NA

Client Instruction

Signature of client authorizing changes to the COC or sample disposition.

Date



envirotech Inc.

Sante Fe Main Office
Phone: (505) 476-3441

General Information
Phone: (505) 629-6116

Online Phone Directory
<https://www.emnrd.nm.gov/ocd/contact-us>

State of New Mexico
Energy, Minerals and Natural Resources
Oil Conservation Division
1220 S. St Francis Dr.
Santa Fe, NM 87505

QUESTIONS

Action 401062

QUESTIONS

Operator: LOGOS OPERATING, LLC 2010 Afton Place Farmington, NM 87401	OGRID: 289408
	Action Number: 401062
	Action Type: [C-141] Remediation Closure Request C-141 (C-141-v-Closure)

QUESTIONS

Prerequisites	
Incident ID (n#)	nAPP2406628203
Incident Name	NAPP2406628203 CENTRAL BASIN SWD # 001 @ 30-045-34426
Incident Type	Produced Water Release
Incident Status	Remediation Closure Report Received
Incident Well	[30-045-34426] CENTRAL BASIN SWD #001

Location of Release Source	
Please answer all the questions in this group.	
Site Name	CENTRAL BASIN SWD # 001
Date Release Discovered	03/01/2024
Surface Owner	Federal

Incident Details	
Please answer all the questions in this group.	
Incident Type	Produced Water Release
Did this release result in a fire or is the result of a fire	No
Did this release result in any injuries	No
Has this release reached or does it have a reasonable probability of reaching a watercourse	No
Has this release endangered or does it have a reasonable probability of endangering public health	No
Has this release substantially damaged or will it substantially damage property or the environment	No
Is this release of a volume that is or may with reasonable probability be detrimental to fresh water	No

Nature and Volume of Release	
Material(s) released, please answer all that apply below. Any calculations or specific justifications for the volumes provided should be attached to the follow-up C-141 submission.	
Crude Oil Released (bbls) Details	Not answered.
Produced Water Released (bbls) Details	Cause: Equipment Failure Injection Well Produced Water Released: 6 BBL Recovered: 6 BBL Lost: 0 BBL.
Is the concentration of chloride in the produced water >10,000 mg/l	No
Condensate Released (bbls) Details	Not answered.
Natural Gas Vented (Mcf) Details	Not answered.
Natural Gas Flared (Mcf) Details	Not answered.
Other Released Details	Not answered.
Are there additional details for the questions above (i.e. any answer containing Other, Specify, Unknown, and/or Fire, or any negative lost amounts)	Release was determined by soil type (sandy loam) and release size of 13'x52'x2"

Sante Fe Main Office
Phone: (505) 476-3441

General Information
Phone: (505) 629-6116

Online Phone Directory
<https://www.emnrd.nm.gov/ocd/contact-us>

State of New Mexico
Energy, Minerals and Natural Resources
Oil Conservation Division
1220 S. St Francis Dr.
Santa Fe, NM 87505

QUESTIONS, Page 2

Action 401062

QUESTIONS (continued)

Operator: LOGOS OPERATING, LLC 2010 Afton Place Farmington, NM 87401	OGRID: 289408
	Action Number: 401062
	Action Type: [C-141] Remediation Closure Request C-141 (C-141-v-Closure)

QUESTIONS

Nature and Volume of Release (continued)	
Is this a gas only submission (i.e. only significant Mcf values reported)	No, according to supplied volumes this does not appear to be a "gas only" report.
Was this a major release as defined by Subsection A of 19.15.29.7 NMAC	No
Reasons why this would be considered a submission for a notification of a major release	<i>Unavailable.</i>
<i>With the implementation of the 19.15.27 NMAC (05/25/2021), venting and/or flaring of natural gas (i.e. gas only) are to be submitted on the C-129 form.</i>	

Initial Response

The responsible party must undertake the following actions immediately unless they could create a safety hazard that would result in injury.

The source of the release has been stopped	True
The impacted area has been secured to protect human health and the environment	True
Released materials have been contained via the use of berms or dikes, absorbent pads, or other containment devices	True
All free liquids and recoverable materials have been removed and managed appropriately	True
If all the actions described above have not been undertaken, explain why	<i>Not answered.</i>

Per Paragraph (4) of Subsection B of 19.15.29.8 NMAC the responsible party may commence remediation immediately after discovery of a release. If remediation has begun, please prepare and attach a narrative of actions to date in the follow-up C-141 submission. If remedial efforts have been successfully completed or if the release occurred within a lined containment area (see Subparagraph (a) of Paragraph (5) of Subsection A of 19.15.29.11 NMAC), please prepare and attach all information needed for closure evaluation in the follow-up C-141 submission.

I hereby certify that the information given above is true and complete to the best of my knowledge and understand that pursuant to OCD rules and regulations all operators are required to report and/or file certain release notifications and perform corrective actions for releases which may endanger public health or the environment. The acceptance of a C-141 report by the OCD does not relieve the operator of liability should their operations have failed to adequately investigate and remediate contamination that pose a threat to groundwater, surface water, human health or the environment. In addition, OCD acceptance of a C-141 report does not relieve the operator of responsibility for compliance with any other federal, state, or local laws and/or regulations.

I hereby agree and sign off to the above statement	Name: Vanessa Fields Title: Regulatory Manager Email: vfields@logosresourcesllc.com Date: 03/07/2024
--	--

Sante Fe Main Office
Phone: (505) 476-3441

General Information
Phone: (505) 629-6116

Online Phone Directory
<https://www.emnrd.nm.gov/ocd/contact-us>

State of New Mexico
Energy, Minerals and Natural Resources
Oil Conservation Division
1220 S. St Francis Dr.
Santa Fe, NM 87505

QUESTIONS, Page 3

Action 401062

QUESTIONS (continued)

Operator: LOGOS OPERATING, LLC 2010 Afton Place Farmington, NM 87401	OGRID: 289408
	Action Number: 401062
	Action Type: [C-141] Remediation Closure Request C-141 (C-141-v-Closure)

QUESTIONS

Site Characterization	
<i>Please answer all the questions in this group (only required when seeking remediation plan approval and beyond). This information must be provided to the appropriate district office no later than 90 days after the release discovery date.</i>	
What is the shallowest depth to groundwater beneath the area affected by the release in feet below ground surface (ft bgs)	Between 100 and 500 (ft.)
What method was used to determine the depth to ground water	Attached Document
Did this release impact groundwater or surface water	No
What is the minimum distance, between the closest lateral extents of the release and the following surface areas:	
A continuously flowing watercourse or any other significant watercourse	Between 500 and 1000 (ft.)
Any lakebed, sinkhole, or playa lake (measured from the ordinary high-water mark)	Greater than 5 (mi.)
An occupied permanent residence, school, hospital, institution, or church	Greater than 5 (mi.)
A spring or a private domestic fresh water well used by less than five households for domestic or stock watering purposes	Greater than 5 (mi.)
Any other fresh water well or spring	Greater than 5 (mi.)
Incorporated municipal boundaries or a defined municipal fresh water well field	Greater than 5 (mi.)
A wetland	Greater than 5 (mi.)
A subsurface mine	Greater than 5 (mi.)
An (non-karst) unstable area	Greater than 5 (mi.)
Categorize the risk of this well / site being in a karst geology	None
A 100-year floodplain	Greater than 5 (mi.)
Did the release impact areas not on an exploration, development, production, or storage site	No

Remediation Plan	
<i>Please answer all the questions that apply or are indicated. This information must be provided to the appropriate district office no later than 90 days after the release discovery date.</i>	
Requesting a remediation plan approval with this submission	Yes
<i>Attach a comprehensive report demonstrating the lateral and vertical extents of soil contamination associated with the release have been determined, pursuant to 19.15.29.11 NMAC and 19.15.29.13 NMAC.</i>	
Have the lateral and vertical extents of contamination been fully delineated	Yes
Was this release entirely contained within a lined containment area	No
Soil Contamination Sampling: (Provide the highest observable value for each, in milligrams per kilograms.)	
Chloride (EPA 300.0 or SM4500 Cl B)	631
TPH (GRO+DRO+MRO) (EPA SW-846 Method 8015M)	90.7
GRO+DRO (EPA SW-846 Method 8015M)	32.9
BTEX (EPA SW-846 Method 8021B or 8260B)	0
Benzene (EPA SW-846 Method 8021B or 8260B)	0
<i>Per Subsection B of 19.15.29.11 NMAC unless the site characterization report includes completed efforts at remediation, the report must include a proposed remediation plan in accordance with 19.15.29.12 NMAC, which includes the anticipated timelines for beginning and completing the remediation.</i>	
On what estimated date will the remediation commence	03/01/2024
On what date will (or did) the final sampling or liner inspection occur	05/31/2024
On what date will (or was) the remediation complete(d)	05/31/2024
What is the estimated surface area (in square feet) that will be reclaimed	556
What is the estimated volume (in cubic yards) that will be reclaimed	3.5
What is the estimated surface area (in square feet) that will be remediated	556
What is the estimated volume (in cubic yards) that will be remediated	3.5
<i>These estimated dates and measurements are recognized to be the best guess or calculation at the time of submission and may (be) change(d) over time as more remediation efforts are completed.</i>	
<i>The OCD recognizes that proposed remediation measures may have to be minimally adjusted in accordance with the physical realities encountered during remediation. If the responsible party has any need to significantly deviate from the remediation plan proposed, then it should consult with the division to determine if another remediation plan submission is required.</i>	

Sante Fe Main Office
Phone: (505) 476-3441

General Information
Phone: (505) 629-6116

Online Phone Directory
<https://www.emnrd.nm.gov/ocd/contact-us>

State of New Mexico
Energy, Minerals and Natural Resources
Oil Conservation Division
1220 S. St Francis Dr.
Santa Fe, NM 87505

QUESTIONS, Page 4

Action 401062

QUESTIONS (continued)

Operator: LOGOS OPERATING, LLC 2010 Afton Place Farmington, NM 87401	OGRID: 289408
	Action Number: 401062
	Action Type: [C-141] Remediation Closure Request C-141 (C-141-v-Closure)

QUESTIONS

Remediation Plan (continued)	
<i>Please answer all the questions that apply or are indicated. This information must be provided to the appropriate district office no later than 90 days after the release discovery date.</i>	
This remediation will (or is expected to) utilize the following processes to remediate / reduce contaminants:	
<i>(Select all answers below that apply.)</i>	
(Ex Situ) Excavation and off-site disposal (i.e. dig and haul, hydrovac, etc.)	Yes
Which OCD approved facility will be used for off-site disposal	Not answered.
OR which OCD approved well (API) will be used for off-site disposal	30-045-34426 CENTRAL BASIN SWD #001
OR is the off-site disposal site, to be used, out-of-state	Not answered.
OR is the off-site disposal site, to be used, an NMED facility	Not answered.
(Ex Situ) Excavation and on-site remediation (i.e. On-Site Land Farms)	Not answered.
(In Situ) Soil Vapor Extraction	Not answered.
(In Situ) Chemical processing (i.e. Soil Shredding, Potassium Permanganate, etc.)	Not answered.
(In Situ) Biological processing (i.e. Microbes / Fertilizer, etc.)	Not answered.
(In Situ) Physical processing (i.e. Soil Washing, Gypsum, Disking, etc.)	Not answered.
Ground Water Abatement pursuant to 19.15.30 NMAC	Not answered.
OTHER (Non-listed remedial process)	Not answered.
<i>Per Subsection B of 19.15.29.11 NMAC unless the site characterization report includes completed efforts at remediation, the report must include a proposed remediation plan in accordance with 19.15.29.12 NMAC, which includes the anticipated timelines for beginning and completing the remediation.</i>	
I hereby certify that the information given above is true and complete to the best of my knowledge and understand that pursuant to OCD rules and regulations all operators are required to report and/or file certain release notifications and perform corrective actions for releases which may endanger public health or the environment. The acceptance of a C-141 report by the OCD does not relieve the operator of liability should their operations have failed to adequately investigate and remediate contamination that pose a threat to groundwater, surface water, human health or the environment. In addition, OCD acceptance of a C-141 report does not relieve the operator of responsibility for compliance with any other federal, state, or local laws and/or regulations.	
I hereby agree and sign off to the above statement	Name: Vanessa Fields Title: Regulatory Manager Email: vfields@logosresourcesllc.com Date: 11/13/2024
<i>The OCD recognizes that proposed remediation measures may have to be minimally adjusted in accordance with the physical realities encountered during remediation. If the responsible party has any need to significantly deviate from the remediation plan proposed, then it should consult with the division to determine if another remediation plan submission is required.</i>	

Sante Fe Main Office
Phone: (505) 476-3441

General Information
Phone: (505) 629-6116

Online Phone Directory
<https://www.emnrd.nm.gov/ocd/contact-us>

State of New Mexico
Energy, Minerals and Natural Resources
Oil Conservation Division
1220 S. St Francis Dr.
Santa Fe, NM 87505

QUESTIONS, Page 5

Action 401062

QUESTIONS (continued)

Operator: LOGOS OPERATING, LLC 2010 Afton Place Farmington, NM 87401	OGRID: 289408
	Action Number: 401062
	Action Type: [C-141] Remediation Closure Request C-141 (C-141-v-Closure)

QUESTIONS

Deferral Requests Only	
Only answer the questions in this group if seeking a deferral upon approval this submission. Each of the following items must be confirmed as part of any request for deferral of remediation.	
Requesting a deferral of the remediation closure due date with the approval of this submission	No

Sante Fe Main Office
Phone: (505) 476-3441

General Information
Phone: (505) 629-6116

Online Phone Directory
<https://www.emnrd.nm.gov/ocd/contact-us>

State of New Mexico
Energy, Minerals and Natural Resources
Oil Conservation Division
1220 S. St Francis Dr.
Santa Fe, NM 87505

QUESTIONS, Page 6

Action 401062

QUESTIONS (continued)

Operator: LOGOS OPERATING, LLC 2010 Afton Place Farmington, NM 87401	OGRID: 289408
	Action Number: 401062
	Action Type: [C-141] Remediation Closure Request C-141 (C-141-v-Closure)

QUESTIONS

Sampling Event Information	
Last sampling notification (C-141N) recorded	348750
Sampling date pursuant to Subparagraph (a) of Paragraph (1) of Subsection D of 19.15.29.12 NMAC	05/31/2024
What was the (estimated) number of samples that were to be gathered	3
What was the sampling surface area in square feet	497

Remediation Closure Request

Only answer the questions in this group if seeking remediation closure for this release because all remediation steps have been completed.

Requesting a remediation closure approval with this submission	Yes
Have the lateral and vertical extents of contamination been fully delineated	Yes
Was this release entirely contained within a lined containment area	No
All areas reasonably needed for production or subsequent drilling operations have been stabilized, returned to the sites existing grade, and have a soil cover that prevents ponding of water, minimizing dust and erosion	Yes
What was the total surface area (in square feet) remediated	556
What was the total volume (cubic yards) remediated	556
All areas not reasonably needed for production or subsequent drilling operations have been reclaimed to contain a minimum of four feet of non-waste contain earthen material with concentrations less than 600 mg/kg chlorides, 100 mg/kg TPH, 50 mg/kg BTEX, and 10 mg/kg Benzene	Yes
What was the total surface area (in square feet) reclaimed	556
What was the total volume (in cubic yards) reclaimed	3.5
Summarize any additional remediation activities not included by answers (above)	A 6 BBL produced water release occurred. All water was removed and able to be disposed of back at the Central Basin SWD# 001. Full remediation report provides all relevant details.

The responsible party must attach information demonstrating they have complied with all applicable closure requirements and any conditions or directives of the OCD. This demonstration should be in the form of a comprehensive report (in .pdf format) including a scaled site map, sampling diagrams, relevant field notes, photographs of any excavation prior to backfilling, laboratory data including chain of custody documents of final sampling, and a narrative of the remedial activities. Refer to 19.15.29.12 NMAC.

I hereby certify that the information given above is true and complete to the best of my knowledge and understand that pursuant to OCD rules and regulations all operators are required to report and/or file certain release notifications and perform corrective actions for releases which may endanger public health or the environment. The acceptance of a C-141 report by the OCD does not relieve the operator of liability should their operations have failed to adequately investigate and remediate contamination that pose a threat to groundwater, surface water, human health or the environment. In addition, OCD acceptance of a C-141 report does not relieve the operator of responsibility for compliance with any other federal, state, or local laws and/or regulations. The responsible party acknowledges they must substantially restore, reclaim, and re-vegetate the impacted surface area to the conditions that existed prior to the release or their final land use in accordance with 19.15.29.13 NMAC including notification to the OCD when reclamation and re-vegetation are complete.

I hereby agree and sign off to the above statement	Name: Vanessa Fields Title: Regulatory Manager Email: vfields@logosresourcesllc.com Date: 11/13/2024
--	--

Sante Fe Main Office
Phone: (505) 476-3441

General Information
Phone: (505) 629-6116

Online Phone Directory
<https://www.emnrd.nm.gov/ocd/contact-us>

State of New Mexico
Energy, Minerals and Natural Resources
Oil Conservation Division
1220 S. St Francis Dr.
Santa Fe, NM 87505

QUESTIONS, Page 7

Action 401062

QUESTIONS (continued)

Operator: LOGOS OPERATING, LLC 2010 Afton Place Farmington, NM 87401	OGRID: 289408
	Action Number: 401062
	Action Type: [C-141] Remediation Closure Request C-141 (C-141-v-Closure)

QUESTIONS

Reclamation Report	
Only answer the questions in this group if all reclamation steps have been completed.	
Requesting a reclamation approval with this submission	No

Sante Fe Main Office
Phone: (505) 476-3441

General Information
Phone: (505) 629-6116

Online Phone Directory
<https://www.emnrd.nm.gov/ocd/contact-us>

State of New Mexico
Energy, Minerals and Natural Resources
Oil Conservation Division
1220 S. St Francis Dr.
Santa Fe, NM 87505

CONDITIONS

Action 401062

CONDITIONS

Operator: LOGOS OPERATING, LLC 2010 Afton Place Farmington, NM 87401	OGRID: 289408
	Action Number: 401062
	Action Type: [C-141] Remediation Closure Request C-141 (C-141-v-Closure)

CONDITIONS

Created By	Condition	Condition Date
nvez	None	11/22/2024