

**District I**  
1625 N. French Dr., Hobbs, NM 88240  
Phone:(575) 393-6161 Fax:(575) 393-0720  
**District II**  
811 S. First St., Artesia, NM 88210  
Phone:(575) 748-1283 Fax:(575) 748-9720  
**District III**  
1000 Rio Brazos Rd., Aztec, NM 87410  
Phone:(505) 334-6178 Fax:(505) 334-6170  
**District IV**  
1220 S. St Francis Dr., Santa Fe, NM 87505  
Phone:(505) 476-3470 Fax:(505) 476-3462

State of New Mexico  
Energy, Minerals and Natural Resources  
Oil Conservation Division  
1220 S. St Francis Dr.  
Santa Fe, NM 87505

QUESTIONS  
  
Action 378305

QUESTIONS

Operator: CIMAREX ENERGY CO. 6001 Deauville Blvd Midland, TX 79706	OGRID: 215099
	Action Number: 378305
	Action Type: [NOTIFY] Notification Of Release (NOR)

QUESTIONS

Location of Release Source	
Please answer all the questions in this group.	
Site Name	Dos Equis 12 Federal Com CTB
Date Release Discovered	08/26/2024
Surface Owner	Federal

Incident Details	
Please answer all the questions in this group.	
Incident Type	Produced Water Release
Did this release result in a fire or is the result of a fire	No
Did this release result in any injuries	No
Has this release reached or does it have a reasonable probability of reaching a watercourse	No
Has this release endangered or does it have a reasonable probability of endangering public health	No
Has this release substantially damaged or will it substantially damage property or the environment	No
Is this release of a volume that is or may with reasonable probability be detrimental to fresh water	No

Nature and Volume of Release	
Material(s) released, please answer all that apply below. Any calculations or specific justifications for the volumes provided should be attached to the follow-up C-141 submission.	
Crude Oil Released (bbls) Details	Cause: Human Error   Tank (Any)   Crude Oil   Released: 3 BBL   Recovered: 3 BBL   Lost: 0 BBL.
Produced Water Released (bbls) Details	Cause: Human Error   Tank (Any)   Produced Water   Released: 124 BBL   Recovered: 124 BBL   Lost: 0 BBL.
Is the concentration of chloride in the produced water >10,000 mg/l	Yes
Condensate Released (bbls) Details	Not answered.
Natural Gas Vented (Mcf) Details	Not answered.
Natural Gas Flared (Mcf) Details	Not answered.
Other Released Details	Not answered.
Are there additional details for the questions above (i.e. any answer containing Other, Specify, Unknown, and/or Fire, or any negative lost amounts)	The incident is still under investigation. It appears after a water hauler pulled a load from the facility, the driver left the location while still connected to the load line. The tension on the 4" poly line caused the fiberglass load line connection to pop out of the fiberglass tank that was in service. A total of 127 barrels fluids was released from the tank and into the lined containment. All fluids remained inside the lined containment and were recovered by a vac truck. The containment will be pressure washed and a liner inspection will be scheduled in the coming weeks. Released: 127 barrels (3 barrels oil + 124 barrels water) Recovered: 127 barrels

**District I**  
1625 N. French Dr., Hobbs, NM 88240  
Phone:(575) 393-6161 Fax:(575) 393-0720  
**District II**  
811 S. First St., Artesia, NM 88210  
Phone:(575) 748-1283 Fax:(575) 748-9720  
**District III**  
1000 Rio Brazos Rd., Aztec, NM 87410  
Phone:(505) 334-6178 Fax:(505) 334-6170  
**District IV**  
1220 S. St Francis Dr., Santa Fe, NM 87505  
Phone:(505) 476-3470 Fax:(505) 476-3462

State of New Mexico  
Energy, Minerals and Natural Resources  
Oil Conservation Division  
1220 S. St Francis Dr.  
Santa Fe, NM 87505

QUESTIONS, Page 2  
  
Action 378305

QUESTIONS (continued)

Operator:  CIMAREX ENERGY CO. 6001 Deauville Blvd Midland, TX 79706	OGRID:  215099
	Action Number:  378305
	Action Type:  [NOTIFY] Notification Of Release (NOR)

QUESTIONS

Nature and Volume of Release (continued)	
Is this a gas only submission (i.e. only significant Mcf values reported)	No, according to supplied volumes this does not appear to be a "gas only" report.
Was this a major release as defined by Subsection A of 19.15.29.7 NMAC	Yes
Reasons why this would be considered a submission for a notification of a major release	From paragraph A. "Major release" determine using: (1) an unauthorized release of a volume, excluding gases, of 25 barrels or more.
With the implementation of the 19.15.27 NMAC (05/25/2021), venting and/or flaring of natural gas (i.e. gas only) are to be submitted on the C-129 form.	

Initial Response	
The responsible party must undertake the following actions immediately unless they could create a safety hazard that would result in injury.	
The source of the release has been stopped	True
The impacted area has been secured to protect human health and the environment	True
Released materials have been contained via the use of berms or dikes, absorbent pads, or other containment devices	True
All free liquids and recoverable materials have been removed and managed appropriately	True
If all the actions described above have not been undertaken, explain why	Not answered.
Per Paragraph 4 of Subsection B of 19.15.29.8 NMAC the responsible party may commence remediation immediately after discovery of a release. If remediation has begun, please prepare and attach a narrative of actions to date in the follow-up C-141 submission. If remedial efforts have been successfully completed or if the release occurred within a lined containment area (see 19.15.29.11(A)(5)(a) NMAC), please prepare and attach all information needed for closure evaluation in the follow-up C-141 submission.	

**District I**  
1625 N. French Dr., Hobbs, NM 88240  
Phone:(575) 393-6161 Fax:(575) 393-0720  
**District II**  
811 S. First St., Artesia, NM 88210  
Phone:(575) 748-1283 Fax:(575) 748-9720  
**District III**  
1000 Rio Brazos Rd., Aztec, NM 87410  
Phone:(505) 334-6178 Fax:(505) 334-6170  
**District IV**  
1220 S. St Francis Dr., Santa Fe, NM 87505  
Phone:(505) 476-3470 Fax:(505) 476-3462

**State of New Mexico**  
**Energy, Minerals and Natural Resources**  
**Oil Conservation Division**  
**1220 S. St Francis Dr.**  
**Santa Fe, NM 87505**

ACKNOWLEDGMENTS  
  
Action 378305

ACKNOWLEDGMENTS

Operator:  CIMAREX ENERGY CO. 6001 Deauville Blvd Midland, TX 79706	OGRID:  215099
	Action Number:  378305
	Action Type: [NOTIFY] Notification Of Release (NOR)

ACKNOWLEDGMENTS

<input checked="" type="checkbox"/>	I acknowledge that I am authorized to submit notification of a release on behalf of my operator.
<input checked="" type="checkbox"/>	I acknowledge that upon submitting this application, I will be creating a new incident file (assigned to my operator) to track the notification(s) and corrective action(s) for a release, pursuant to NMAC 19.15.29.
<input checked="" type="checkbox"/>	I acknowledge that creating a new incident file will require my operator to file subsequent submission(s) of form "C-141, Application for administrative approval of a release notification and corrective action", pursuant to NMAC 19.15.29.
<input checked="" type="checkbox"/>	I hereby certify that the information given above is true and complete to the best of my knowledge and understand that pursuant to OCD rules and regulations all operators are required to report and/or file certain release notifications and perform corrective actions for releases which may endanger public health or the environment.
<input checked="" type="checkbox"/>	I acknowledge the fact that the acceptance of a C-141 report by the OCD does not relieve the operator of liability should their operations have failed to adequately investigate and remediate contamination that pose a threat to groundwater, surface water, human health or the environment.
<input checked="" type="checkbox"/>	I acknowledge the fact that, in addition, OCD acceptance of a C-141 report does not relieve the operator of responsibility for compliance with any other federal, state, or local laws and/or regulations.

**District I**  
1625 N. French Dr., Hobbs, NM 88240  
Phone:(575) 393-6161 Fax:(575) 393-0720  
**District II**  
811 S. First St., Artesia, NM 88210  
Phone:(575) 748-1283 Fax:(575) 748-9720  
**District III**  
1000 Rio Brazos Rd., Aztec, NM 87410  
Phone:(505) 334-6178 Fax:(505) 334-6170  
**District IV**  
1220 S. St Francis Dr., Santa Fe, NM 87505  
Phone:(505) 476-3470 Fax:(505) 476-3462

State of New Mexico  
Energy, Minerals and Natural Resources  
Oil Conservation Division  
1220 S. St Francis Dr.  
Santa Fe, NM 87505

CONDITIONS  
  
Action 378305

CONDITIONS

Operator: CIMAREX ENERGY CO. 6001 Deauville Blvd Midland, TX 79706	OGRID: 215099
	Action Number: 378305
	Action Type: [NOTIFY] Notification Of Release (NOR)

CONDITIONS

Created By	Condition	Condition Date
lluig	When submitting future reports regarding this release, please submit the calculations used or specific justification for the volumes reported on the initial C-141.	8/27/2024



**Dos Equis 12 Fed Com CTB Spill Calculation**

Tank Size (bbls)	500
Tank Top Gauge (in.)	60
Tank Btm Gauge (in.)	14
Difference	46
Coefficient	2.78
<b>Total Barrels:</b>	<b>127</b>



CIMAREX ENERGY  
DOS EQUIS 12 FED COM CTB  
LEA, NM







CIMAREX ENERGY  
DOS EQUIS 12 FED COM CTB  
LEA, NM



**District I**  
1625 N. French Dr., Hobbs, NM 88240  
Phone:(575) 393-6161 Fax:(575) 393-0720  
**District II**  
811 S. First St., Artesia, NM 88210  
Phone:(575) 748-1283 Fax:(575) 748-9720  
**District III**  
1000 Rio Brazos Rd., Aztec, NM 87410  
Phone:(505) 334-6178 Fax:(505) 334-6170  
**District IV**  
1220 S. St Francis Dr., Santa Fe, NM 87505  
Phone:(505) 476-3470 Fax:(505) 476-3462

State of New Mexico  
Energy, Minerals and Natural Resources  
Oil Conservation Division  
1220 S. St Francis Dr.  
Santa Fe, NM 87505

QUESTIONS

Action 378963

QUESTIONS

Operator: CIMAREX ENERGY CO. 6001 Deauville Blvd Midland, TX 79706	OGRID: 215099
	Action Number: 378963
	Action Type: [C-141] Initial C-141 (C-141-v-Initial)

QUESTIONS

Prerequisites	
Incident ID (n#)	nAPP2424037623
Incident Name	NAPP2424037623 DOS EQUIS 12 FEDERAL COM CTB @ 0
Incident Type	Produced Water Release
Incident Status	Initial C-141 Received
Incident Facility	[fAPP2201248550] DOS EQUIS 12

Location of Release Source	
Please answer all the questions in this group.	
Site Name	Dos Equis 12 Federal Com CTB
Date Release Discovered	08/26/2024
Surface Owner	Federal

Incident Details	
Please answer all the questions in this group.	
Incident Type	Produced Water Release
Did this release result in a fire or is the result of a fire	No
Did this release result in any injuries	No
Has this release reached or does it have a reasonable probability of reaching a watercourse	No
Has this release endangered or does it have a reasonable probability of endangering public health	No
Has this release substantially damaged or will it substantially damage property or the environment	No
Is this release of a volume that is or may with reasonable probability be detrimental to fresh water	No

Nature and Volume of Release	
Material(s) released, please answer all that apply below. Any calculations or specific justifications for the volumes provided should be attached to the follow-up C-141 submission.	
Crude Oil Released (bbls) Details	Cause: Human Error   Tank (Any)   Crude Oil   Released: 3 BBL   Recovered: 3 BBL   Lost: 0 BBL.
Produced Water Released (bbls) Details	Cause: Human Error   Tank (Any)   Produced Water   Released: 124 BBL   Recovered: 124 BBL   Lost: 0 BBL.
Is the concentration of chloride in the produced water >10,000 mg/l	Yes
Condensate Released (bbls) Details	Not answered.
Natural Gas Vented (Mcf) Details	Not answered.
Natural Gas Flared (Mcf) Details	Not answered.
Other Released Details	Not answered.
Are there additional details for the questions above (i.e. any answer containing Other, Specify, Unknown, and/or Fire, or any negative lost amounts)	The incident is still under investigation. It appears after a water hauler pulled a load from the facility, the driver left the location while still connected to the load line. The tension on the 4" poly line caused the fiberglass load line connection to pop out of the fiberglass tank that was in service. A total of 127 barrels fluids was released from the tank and into the lined containment. All fluids remained inside the lined containment and were recovered by a vac truck. The containment will be pressure washed and a liner inspection will be scheduled in the coming weeks. Released: 127 barrels (3 barrels oil + 124 barrels water) Recovered: 127 barrels

**District I**

1625 N. French Dr., Hobbs, NM 88240  
Phone:(575) 393-6161 Fax:(575) 393-0720

**District II**

811 S. First St., Artesia, NM 88210  
Phone:(575) 748-1283 Fax:(575) 748-9720

**District III**

1000 Rio Brazos Rd., Aztec, NM 87410  
Phone:(505) 334-6178 Fax:(505) 334-6170

**District IV**

1220 S. St Francis Dr., Santa Fe, NM 87505  
Phone:(505) 476-3470 Fax:(505) 476-3462

**State of New Mexico**  
**Energy, Minerals and Natural Resources**  
**Oil Conservation Division**  
**1220 S. St Francis Dr.**  
**Santa Fe, NM 87505**

QUESTIONS, Page 2

Action 378963

**QUESTIONS (continued)**

Operator: CIMAREX ENERGY CO. 6001 Deauville Blvd Midland, TX 79706	OGRID: 215099
	Action Number: 378963
	Action Type: [C-141] Initial C-141 (C-141-v-Initial)

**QUESTIONS**

Nature and Volume of Release (continued)	
Is this a gas only submission (i.e. only significant Mcf values reported)	No, according to supplied volumes this does not appear to be a "gas only" report.
Was this a major release as defined by Subsection A of 19.15.29.7 NMAC	Yes
Reasons why this would be considered a submission for a notification of a major release	From paragraph A. "Major release" determine using: (1) an unauthorized release of a volume, excluding gases, of 25 barrels or more.
With the implementation of the 19.15.27 NMAC (05/25/2021), venting and/or flaring of natural gas (i.e. gas only) are to be submitted on the C-129 form.	

**Initial Response**

The responsible party must undertake the following actions immediately unless they could create a safety hazard that would result in injury.

The source of the release has been stopped	True
The impacted area has been secured to protect human health and the environment	True
Released materials have been contained via the use of berms or dikes, absorbent pads, or other containment devices	True
All free liquids and recoverable materials have been removed and managed appropriately	True
If all the actions described above have not been undertaken, explain why	Not answered.

Per Paragraph (4) of Subsection B of 19.15.29.8 NMAC the responsible party may commence remediation immediately after discovery of a release. If remediation has begun, please prepare and attach a narrative of actions to date in the follow-up C-141 submission. If remedial efforts have been successfully completed or if the release occurred within a lined containment area (see Subparagraph (a) of Paragraph (5) of Subsection A of 19.15.29.11 NMAC), please prepare and attach all information needed for closure evaluation in the follow-up C-141 submission.

I hereby certify that the information given above is true and complete to the best of my knowledge and understand that pursuant to OCD rules and regulations all operators are required to report and/or file certain release notifications and perform corrective actions for releases which may endanger public health or the environment. The acceptance of a C-141 report by the OCD does not relieve the operator of liability should their operations have failed to adequately investigate and remediate contamination that pose a threat to groundwater, surface water, human health or the environment. In addition, OCD acceptance of a C-141 report does not relieve the operator of responsibility for compliance with any other federal, state, or local laws and/or regulations.

I hereby agree and sign off to the above statement	Name: Laci Luig Title: ES&H Specialist Email: DL_PermianEnvironmental@coterra.com Date: 08/28/2024
--	---



**District I**  
1625 N. French Dr., Hobbs, NM 88240  
Phone:(575) 393-6161 Fax:(575) 393-0720

**District II**  
811 S. First St., Artesia, NM 88210  
Phone:(575) 748-1283 Fax:(575) 748-9720

**District III**  
1000 Rio Brazos Rd., Aztec, NM 87410  
Phone:(505) 334-6178 Fax:(505) 334-6170

**District IV**  
1220 S. St Francis Dr., Santa Fe, NM 87505  
Phone:(505) 476-3470 Fax:(505) 476-3462

State of New Mexico  
Energy, Minerals and Natural Resources  
Oil Conservation Division  
1220 S. St Francis Dr.  
Santa Fe, NM 87505

QUESTIONS, Page 3  
  
Action 378963

QUESTIONS (continued)

Operator:  CIMAREX ENERGY CO. 6001 Deauville Blvd Midland, TX 79706	OGRID:  215099
	Action Number:  378963
	Action Type:  [C-141] Initial C-141 (C-141-v-Initial)

QUESTIONS

**Site Characterization**  
*Please answer all the questions in this group (only required when seeking remediation plan approval and beyond). This information must be provided to the appropriate district office no later than 90 days after the release discovery date.*

What is the shallowest depth to groundwater beneath the area affected by the release in feet below ground surface (ft bgs)	Not answered.
What method was used to determine the depth to ground water	Not answered.
Did this release impact groundwater or surface water	Not answered.
<b>What is the minimum distance, between the closest lateral extents of the release and the following surface areas:</b>	
A continuously flowing watercourse or any other significant watercourse	Not answered.
Any lakebed, sinkhole, or playa lake (measured from the ordinary high-water mark)	Not answered.
An occupied permanent residence, school, hospital, institution, or church	Not answered.
A spring or a private domestic fresh water well used by less than five households for domestic or stock watering purposes	Not answered.
Any other fresh water well or spring	Not answered.
Incorporated municipal boundaries or a defined municipal fresh water well field	Not answered.
A wetland	Not answered.
A subsurface mine	Not answered.
An (non-karst) unstable area	Not answered.
Categorize the risk of this well / site being in a karst geology	Not answered.
A 100-year floodplain	Not answered.
Did the release impact areas not on an exploration, development, production, or storage site	Not answered.

**Remediation Plan**  
*Please answer all the questions that apply or are indicated. This information must be provided to the appropriate district office no later than 90 days after the release discovery date.*

Requesting a remediation plan approval with this submission	No
---	----

*The OCD recognizes that proposed remediation measures may have to be minimally adjusted in accordance with the physical realities encountered during remediation. If the responsible party has any need to significantly deviate from the remediation plan proposed, then it should consult with the division to determine if another remediation plan submission is required.*

**District I**  
1625 N. French Dr., Hobbs, NM 88240  
Phone:(575) 393-6161 Fax:(575) 393-0720  
**District II**  
811 S. First St., Artesia, NM 88210  
Phone:(575) 748-1283 Fax:(575) 748-9720  
**District III**  
1000 Rio Brazos Rd., Aztec, NM 87410  
Phone:(505) 334-6178 Fax:(505) 334-6170  
**District IV**  
1220 S. St Francis Dr., Santa Fe, NM 87505  
Phone:(505) 476-3470 Fax:(505) 476-3462

**State of New Mexico**  
**Energy, Minerals and Natural Resources**  
**Oil Conservation Division**  
**1220 S. St Francis Dr.**  
**Santa Fe, NM 87505**

CONDITIONS  
  
Action 378963

CONDITIONS

Operator: CIMAREX ENERGY CO. 6001 Deauville Blvd Midland, TX 79706	OGRID: 215099
	Action Number: 378963
	Action Type: [C-141] Initial C-141 (C-141-v-Initial)

CONDITIONS

Created By	Condition	Condition Date
nvelez	None	9/5/2024

**District I**  
1625 N. French Dr., Hobbs, NM 88240  
Phone:(575) 393-6161 Fax:(575) 393-0720  
**District II**  
811 S. First St., Artesia, NM 88210  
Phone:(575) 748-1283 Fax:(575) 748-9720  
**District III**  
1000 Rio Brazos Rd., Aztec, NM 87410  
Phone:(505) 334-6178 Fax:(505) 334-6170  
**District IV**  
1220 S. St Francis Dr., Santa Fe, NM 87505  
Phone:(505) 476-3470 Fax:(505) 476-3462

**State of New Mexico**  
**Energy, Minerals and Natural Resources**  
**Oil Conservation Division**  
**1220 S. St Francis Dr.**  
**Santa Fe, NM 87505**

QUESTIONS  
  
Action 383351

QUESTIONS

Operator: CIMAREX ENERGY CO. 6001 Deauville Blvd Midland, TX 79706	OGRID: 215099
	Action Number: 383351
	Action Type: [NOTIFY] Notification Of Liner Inspection (C-141L)

QUESTIONS

Prerequisites	
Incident ID (n#)	nAPP2424037623
Incident Name	NAPP2424037623 DOS EQUIS 12 FEDERAL COM CTB @ 0
Incident Type	Produced Water Release
Incident Status	Initial C-141 Approved
Incident Facility	[fAPP2201248550] DOS EQUIS 12

Location of Release Source	
Site Name	Dos Equis 12 Federal Com CTB
Date Release Discovered	08/26/2024
Surface Owner	Federal

Liner Inspection Event Information	
Please answer all the questions in this group.	
What is the liner inspection surface area in square feet	15,110
Have all the impacted materials been removed from the liner	Yes
Liner inspection date pursuant to Subparagraph (a) of Paragraph (5) of Subsection A of 19.15.29.11 NMAC	09/18/2024
Time liner inspection will commence	10:00 AM
Please provide any information necessary for observers to liner inspection	Inspecting lined tank containment
Please provide any information necessary for navigation to liner inspection site	GPS Coordinates 32.23847, -103.62239



**District I**  
1625 N. French Dr., Hobbs, NM 88240  
Phone:(575) 393-6161 Fax:(575) 393-0720  
**District II**  
811 S. First St., Artesia, NM 88210  
Phone:(575) 748-1283 Fax:(575) 748-9720  
**District III**  
1000 Rio Brazos Rd., Aztec, NM 87410  
Phone:(505) 334-6178 Fax:(505) 334-6170  
**District IV**  
1220 S. St Francis Dr., Santa Fe, NM 87505  
Phone:(505) 476-3470 Fax:(505) 476-3462

**State of New Mexico**  
**Energy, Minerals and Natural Resources**  
**Oil Conservation Division**  
**1220 S. St Francis Dr.**  
**Santa Fe, NM 87505**

CONDITIONS  
  
Action 383351

CONDITIONS

Operator: CIMAREX ENERGY CO. 6001 Deauville Blvd Midland, TX 79706	OGRID: 215099
	Action Number: 383351
	Action Type: [NOTIFY] Notification Of Liner Inspection (C-141L)

CONDITIONS

Created By	Condition	Condition Date
lluig	Failure to notify the OCD of liner inspections including any changes in date/time per the requirements of 19.15.29.11.A(5)(a)(ii) NMAC, may result in the inspection not being accepted.	9/13/2024

**District I**  
1625 N. French Dr., Hobbs, NM 88240  
Phone:(575) 393-6161 Fax:(575) 393-0720  
**District II**  
811 S. First St., Artesia, NM 88210  
Phone:(575) 748-1283 Fax:(575) 748-9720  
**District III**  
1000 Rio Brazos Rd., Aztec, NM 87410  
Phone:(505) 334-6178 Fax:(505) 334-6170  
**District IV**  
1220 S. St Francis Dr., Santa Fe, NM 87505  
Phone:(505) 476-3470 Fax:(505) 476-3462

State of New Mexico  
Energy, Minerals and Natural Resources  
Oil Conservation Division  
1220 S. St Francis Dr.  
Santa Fe, NM 87505

QUESTIONS  
  
Action 385103

QUESTIONS

Operator: CIMAREX ENERGY CO. 6001 Deauville Blvd Midland, TX 79706	OGRID: 215099
	Action Number: 385103
	Action Type: [NOTIFY] Notification Of Liner Inspection (C-141L)

QUESTIONS

Prerequisites	
Incident ID (n#)	nAPP2424037623
Incident Name	NAPP2424037623 DOS EQUIS 12 FEDERAL COM CTB @ 0
Incident Type	Produced Water Release
Incident Status	Initial C-141 Approved
Incident Facility	[fAPP2201248550] DOS EQUIS 12

Location of Release Source	
Site Name	Dos Equis 12 Federal Com CTB
Date Release Discovered	08/26/2024
Surface Owner	Federal

Liner Inspection Event Information	
Please answer all the questions in this group.	
What is the liner inspection surface area in square feet	15,110
Have all the impacted materials been removed from the liner	Yes
Liner inspection date pursuant to Subparagraph (a) of Paragraph (5) of Subsection A of 19.15.29.11 NMAC	09/23/2024
Time liner inspection will commence	08:30 AM
Please provide any information necessary for observers to liner inspection	Inspecting lined containment
Please provide any information necessary for navigation to liner inspection site	GPS Coordinates 32.23847, -103.62239

**District I**  
1625 N. French Dr., Hobbs, NM 88240  
Phone:(575) 393-6161 Fax:(575) 393-0720  
**District II**  
811 S. First St., Artesia, NM 88210  
Phone:(575) 748-1283 Fax:(575) 748-9720  
**District III**  
1000 Rio Brazos Rd., Aztec, NM 87410  
Phone:(505) 334-6178 Fax:(505) 334-6170  
**District IV**  
1220 S. St Francis Dr., Santa Fe, NM 87505  
Phone:(505) 476-3470 Fax:(505) 476-3462

State of New Mexico  
Energy, Minerals and Natural Resources  
Oil Conservation Division  
1220 S. St Francis Dr.  
Santa Fe, NM 87505

CONDITIONS  
  
Action 385103

CONDITIONS

Operator: CIMAREX ENERGY CO. 6001 Deauville Blvd Midland, TX 79706	OGRID: 215099
	Action Number: 385103
	Action Type: [NOTIFY] Notification Of Liner Inspection (C-141L)

CONDITIONS

Created By	Condition	Condition Date
lluig	Failure to notify the OCD of liner inspections including any changes in date/time per the requirements of 19.15.29.11.A(5)(a)(ii) NMAC, may result in the inspection not being accepted.	9/19/2024

**District I**  
1625 N. French Dr., Hobbs, NM 88240  
Phone:(575) 393-6161 Fax:(575) 393-0720

**District II**  
811 S. First St., Artesia, NM 88210  
Phone:(575) 748-1283 Fax:(575) 748-9720

**District III**  
1000 Rio Brazos Rd., Aztec, NM 87410  
Phone:(505) 334-6178 Fax:(505) 334-6170

**District IV**  
1220 S. St Francis Dr., Santa Fe, NM 87505  
Phone:(505) 476-3470 Fax:(505) 476-3462

State of New Mexico  
Energy, Minerals and Natural Resources  
Oil Conservation Division  
1220 S. St Francis Dr.  
Santa Fe, NM 87505

QUESTIONS

Action 390291

QUESTIONS

Operator: CIMAREX ENERGY CO. 6001 Deauville Blvd Midland, TX 79706	OGRID: 215099
	Action Number: 390291
	Action Type: [NOTIFY] Notification Of Liner Inspection (C-141L)

QUESTIONS

Prerequisites	
Incident ID (n#)	nAPP2424037623
Incident Name	NAPP2424037623 DOS EQUIS 12 FEDERAL COM CTB @ 0
Incident Type	Produced Water Release
Incident Status	Initial C-141 Approved
Incident Facility	[fAPP2201248550] DOS EQUIS 12

Location of Release Source	
Site Name	Dos Equis 12 Federal Com CTB
Date Release Discovered	08/26/2024
Surface Owner	Federal

Liner Inspection Event Information	
Please answer all the questions in this group.	
What is the liner inspection surface area in square feet	15,110
Have all the impacted materials been removed from the liner	Yes
Liner inspection date pursuant to Subparagraph (a) of Paragraph (5) of Subsection A of 19.15.29.11 NMAC	10/09/2024
Time liner inspection will commence	12:00 PM
Please provide any information necessary for observers to liner inspection	Inspecting lined containment
Please provide any information necessary for navigation to liner inspection site	GPS Coordinates 32.23847, -103.62239

**District I**  
1625 N. French Dr., Hobbs, NM 88240  
Phone:(575) 393-6161 Fax:(575) 393-0720  
**District II**  
811 S. First St., Artesia, NM 88210  
Phone:(575) 748-1283 Fax:(575) 748-9720  
**District III**  
1000 Rio Brazos Rd., Aztec, NM 87410  
Phone:(505) 334-6178 Fax:(505) 334-6170  
**District IV**  
1220 S. St Francis Dr., Santa Fe, NM 87505  
Phone:(505) 476-3470 Fax:(505) 476-3462

State of New Mexico  
Energy, Minerals and Natural Resources  
Oil Conservation Division  
1220 S. St Francis Dr.  
Santa Fe, NM 87505

CONDITIONS  
  
Action 390291

CONDITIONS

Operator: CIMAREX ENERGY CO. 6001 Deauville Blvd Midland, TX 79706	OGRID: 215099
	Action Number: 390291
	Action Type: [NOTIFY] Notification Of Liner Inspection (C-141L)

CONDITIONS

Created By	Condition	Condition Date
lluig	Failure to notify the OCD of liner inspections including any changes in date/time per the requirements of 19.15.29.11.A(5)(a)(ii) NMAC, may result in the inspection not being accepted.	10/7/2024



# Liner Integrity Certification

The following serves to verify that the affected liner has been inspected and found to be in serviceable condition in accordance with 19.15.29.11 A.(5)(a)(i-ii) of the New Mexico Administrative Code.

**FACILITY ID: FAPP2201248550**

Date: 11/4/2024

Incident ID(s): nAPP2424037623

- ☒ Responsible Party has visually inspected the liner.
- ☒ Liner remains intact and was able to contain the leak in question.
- ☒ At least two business days' notice was given to the appropriate division district office before conducting the liner inspection.
- ☒ Photographs illustrating liner integrity are included.



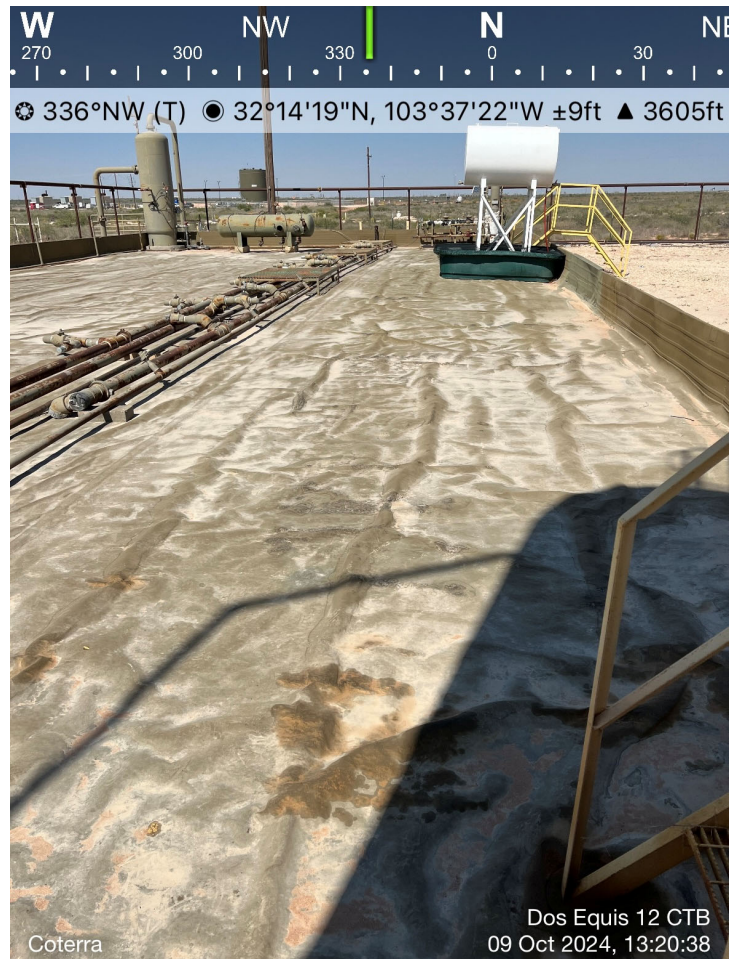
CIMAREX ENERGY  
DOS EQUIS 12 FEDERAL COM 1H  
LEA, NM







CIMAREX ENERGY  
DOS EQUIS 12 FEDERAL COM 1H  
LEA, NM







CIMAREX ENERGY  
DOS EQUIS 12 FEDERAL COM 1H  
LEA, NM







CIMAREX ENERGY  
DOS EQUIS 12 FEDERAL COM 1H  
LEA, NM







CIMAREX ENERGY  
DOS EQUIS 12 FEDERAL COM 1H  
LEA, NM





CIMAREX ENERGY  
DOS EQUIS 12 FEDERAL COM 1H  
LEA, NM







CIMAREX ENERGY  
DOS EQUIS 12 FEDERAL COM 1H  
LEA, NM







CIMAREX ENERGY  
DOS EQUIS 12 FEDERAL COM 1H  
LEA, NM







CIMAREX ENERGY  
DOS EQUIS 12 FEDERAL COM 1H  
LEA, NM

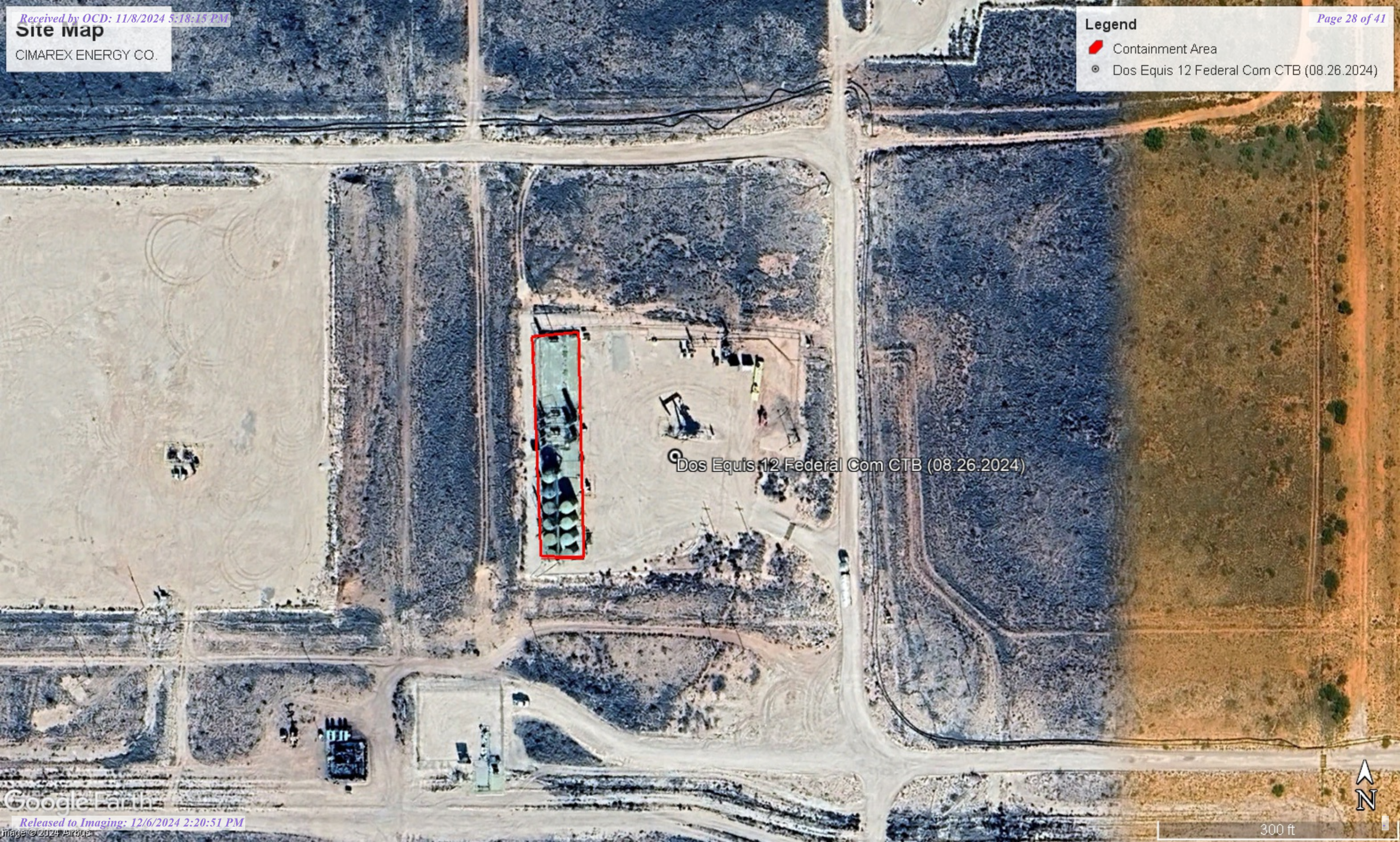




**Site Map**  
CIMAREX ENERGY CO.

**Legend**

-  Containment Area
-  Dos Equis 12 Federal Com CTB (08.26.2024)



Dos Equis 12 Federal Com CTB (08.26.2024)

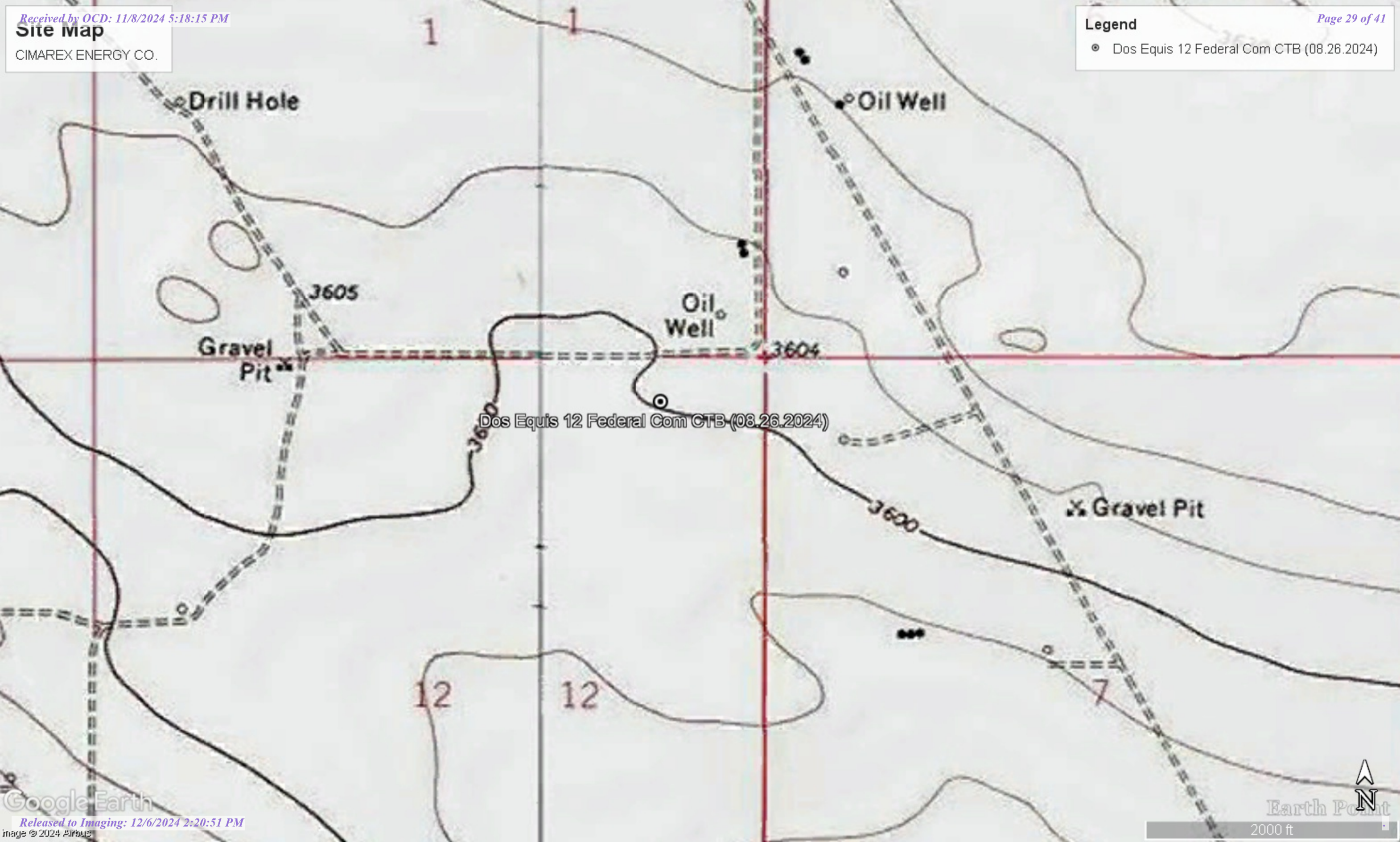




**Site Map**  
CIMAREX ENERGY CO.

**Legend**

- ◉ Dos Equis 12 Federal Com CTB (08.26.2024)



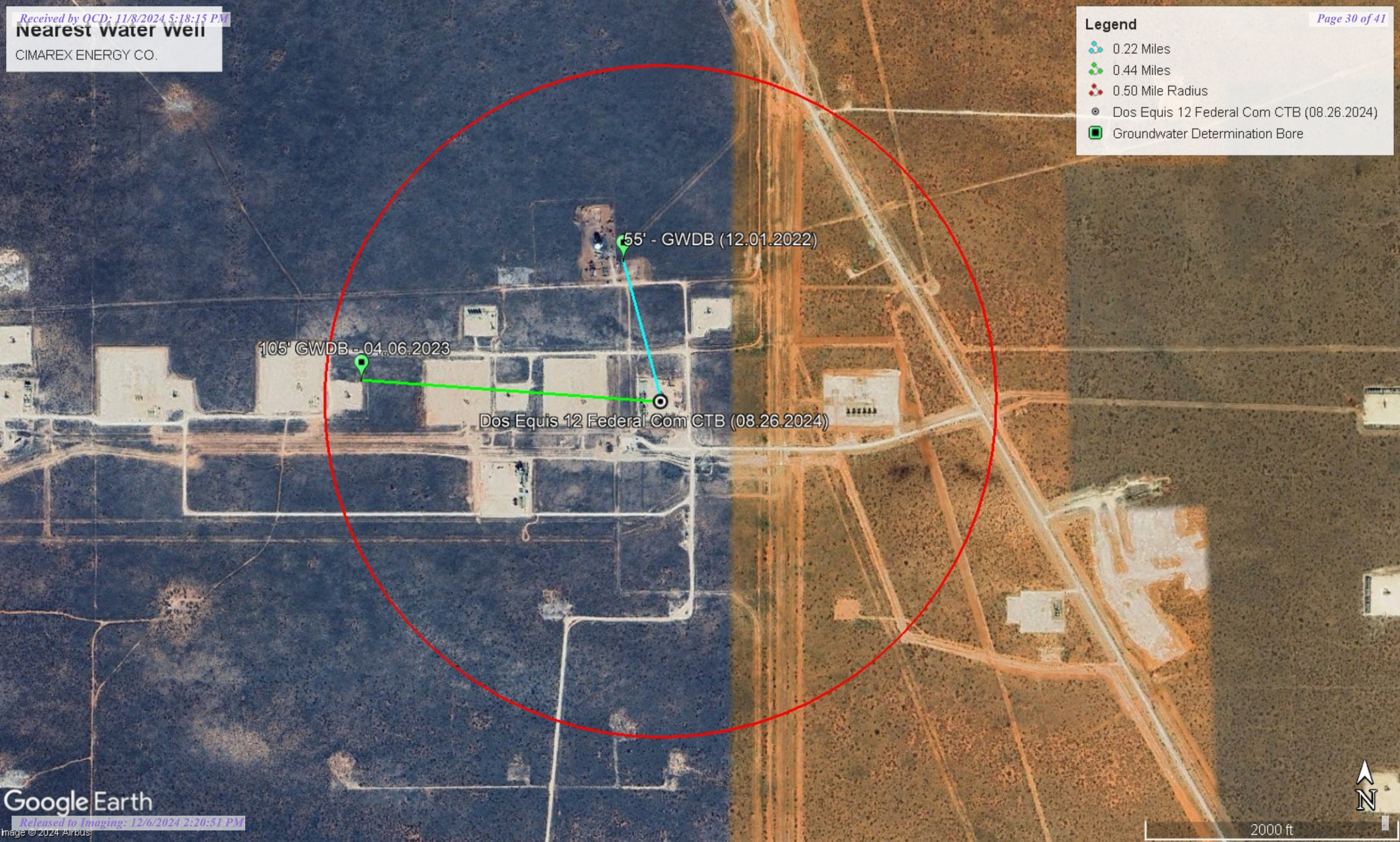


Nearest water well

CIMAREX ENERGY CO.

**Legend**

- 0.22 Miles
- 0.44 Miles
- 0.50 Mile Radius
- Dos Equis 12 Federal Com CTB (08.26.2024)
- Groundwater Determination Bore

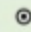





Low Karst

CIMAREX ENERGY CO.

Legend

-  Dos Equis 12 Federal Com CTB (08.26.2024)
-  Low

Dos Equis 12 Federal Com CTB (08.26.2024)





New Mexico Office of the State Engineer

Water Column/Average Depth to Water

(A CLW##### in the POD suffix indicates the POD has been replaced & no longer serves a water right file.)

(R=POD has been replaced, O=orphaned, C=the file is closed)

(quarters are smallest to largest)

(meters)

(In feet)

POD Number	Code	Sub basin	County	Q64	Q16	Q4	Sec	Tws	Range	X	Y	Map	Distance	Well Depth	Depth Water	Water Column
<a href="#">C 01932</a>		C	ED		SW	NW	12	24S	32E	628633.0	3567188.0 *		1265	492		
<a href="#">C 04551 POD1</a>		CUB	LE	SE	SE	SW	31	23S	33E	630671.0	3569556.5		2054			
<a href="#">C 03591 POD1</a>		CUB	LE	NE	NW	SE	05	24S	33E	632731.3	3568518.0		3052			
<a href="#">C 03565 POD3</a>		CUB	LE		SW	SE	08	24S	33E	632763.4	3566546.9		3189		1533	

Average Depth to Water: 1533 feet

Minimum Depth: 1533 feet

Maximum Depth: 1533 feet

Record Count: 4

UTM Filters (in meters):


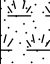



Easting: 629790.00

Northing: 3567701.00

Radius: 4000

\* UTM location was derived from PLSS - see Help

The data is furnished by the NMOSE/ISC and is accepted by the recipient with the expressed understanding that the OSE/ISC make no warranties, expressed or implied, concerning the accuracy, completeness, reliability, usability, or suitability for any particular purpose of the data.

212C-MD-02921		 TETRA TECH		LOG OF BORING DTW				Page 1 of 1						
Project Name: Shurvessa Interconnect Release														
Borehole LocationGPS Coordinate: 32.241447, -103.623363						Surface Elevation: ft								
Borehole Number: GWDB				Borehole Diameter (in.):		Date Started: 12/1/2022		Date Finished: 12/1/2022						
DEPTH (ft)	OPERATION TYPE	SAMPLE	CHLORIDE FIELD SCREENING (ppm)	VOC FIELD SCREENING (ppm)	SAMPLE RECOVERY (%)	MOISTURE CONTENT (%)	DRY DENSITY (pcf)	LIQUID LIMIT	PLASTICITY INDEX	MINUS NO. 200 (%)	GRAPHIC LOG	WATER LEVEL OBSERVATIONS		
												While Drilling <u>▽</u> DRY ft Upon Completion of Drilling <u>▽</u> DRY ft		
Remarks:												DEPTH (ft)	REMARKS	
MATERIAL DESCRIPTION														
5												-SM- TOPSOIL (Sand): Reddish brown, loose, dry	4	
												-SM- SAND: Brown, loose, dry	8	
10												-SM- SAND: Brown to reddish brown, medium dense, dry, moderately cemented, with frequent clay seams	20	
15												-SM- SAND: Brown, very loose, dry, trace gravel		
20												-- Transitions to with occasional cemented layers		
25														
30														
35														
40														
45														
50														
55														
Bottom of borehole at 55.0 feet.														
Sampler Types:		<input checked="" type="checkbox"/> Split Spoon	<input type="checkbox"/> Acetate Liner	Operation Types:		<input type="checkbox"/> Mud Rotary	<input type="checkbox"/> Air Rotary	Notes:						
		<input type="checkbox"/> Shelby	<input type="checkbox"/> Vane Shear			<input type="checkbox"/> Continuous Flight Auger	<input type="checkbox"/> Direct Push	Surface elevation is an estimated value from Google Earth data.						
		<input type="checkbox"/> Bulk Sample	<input type="checkbox"/> Discrete Sample			<input type="checkbox"/> Wash Rotary	<input type="checkbox"/> Core Barrel							
		<input type="checkbox"/> Grab Sample	<input type="checkbox"/> Test Pit											
Logger: Joe Tyler				Drilling Equipment: Air Rotary				Driller: Scarborough Drilling						



CARMONA RESOURCES



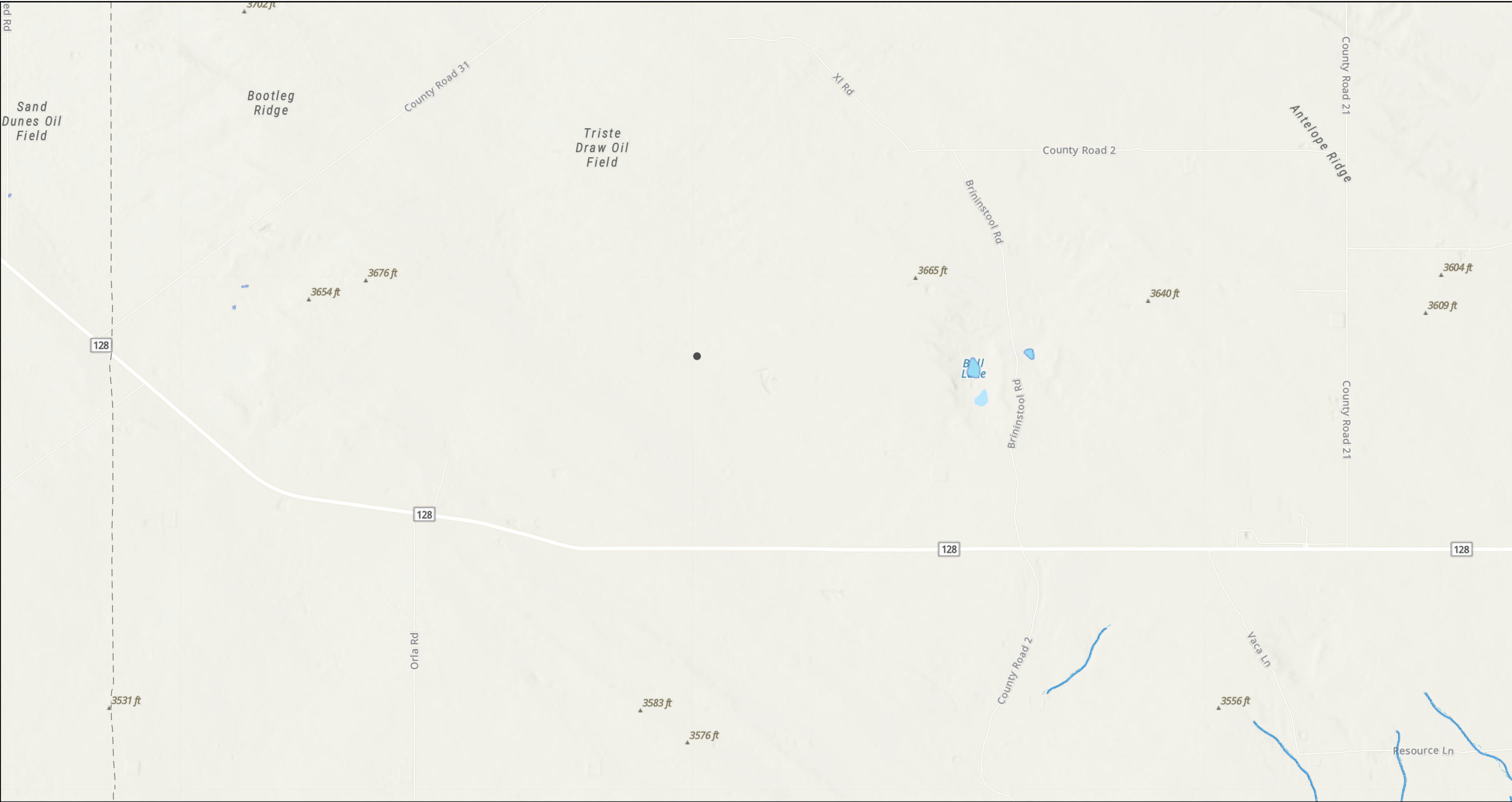
Project Name :	<b>Dos Equis 12 Federal Com 3H</b>	Date :	<b>Thursday, April 6, 2023</b>
Project No. :	<b>1242</b>	Sampler :	<b>Michael Collier</b>
Location :	<b>Lea County, New Mexico</b>	Driller :	<b>H&amp;R Enterprises</b>
Coordinates :	<b>32.238879°, -103.63003°</b>	Method :	<b>Air Rotary</b>
Elevation :	<b>3,606'</b>		

Depth (ft.)	WL	Soil Description	Lithology	Depth (ft.)	WL	Soil Description	Lithology
0		(0') - White/Grey well graded gravel, caliche, no organics, dry (GM).		50		(50') - Light brown/Red, Red Bed Sands, 90% Silty Sand, 10% Clay, dry (SM).	
5		(5') - White/Grey well graded gravel, caliche, no organics, dry (GM).		55		(55') - Light brown/Red, Red Bed Sands, 90% Silty Sand, 10% Clay, dry (SM).	
10		(10') - White/Grey well graded gravel, caliche, no organics, dry (GM).		60		(60') - Red, Red Bed Sands, 70% Silty Sand, 30% Clay, dry (SC).	
15		(15') - White/Grey well graded gravel, caliche, no organics, dry (GM).		65		(65') - Red, Red Bed Sands, 70% Silty Sand, 30% Clay, dry (SC).	
20		(20') - White/Grey well graded gravel, caliche, no organics, dry (GM).		70		(70') - Red, Red Bed Sands, 70% Silty Sand, 30% Clay, dry (SC).	
25		(25') - White/Grey well graded gravel, caliche, no organics, dry (GM).		75		(75') - Red, Red Bed Sands, 70% Silty Sand, 30% Clay, dry (SC).	
30		(30') - Light brown/Red, Red Bed Sands, 90% Silty Sand, 10% Clay, dry (SM).		80		(80') - Red, Red Bed Sands, 70% Silty Sand, 30% Clay, dry (SC).	
35		(35') - Light brown/Red, Red Bed Sands, 90% Silty Sand, 10% Clay, dry (SM).		85		(85') - Red, Red Bed Sands, 70% Silty Sand, 30% Clay, dry (SC).	
40		(40') - Light brown/Red, Red Bed Sands, 90% Silty Sand, 10% Clay, dry (SM).		90		(90') - Red, Red Bed Clayey Sands, 70% Clay, 30% Silty Sands, dry (CL).	
45		(45') - Light brown/Red, Red Bed Sands, 90% Silty Sand, 10% Clay, dry (SM).		95		(95') - Red, Red Bed Clayey Sands, 70% Clay, 30% Silty Sands, dry (CL).	
50				105		(105') - Red, Red Bed Clayey Sands, 70% Clay, 30% Silty Sands, dry (CL).	

Comments : Boring terminated at 105' with no presence of groundwater or moisture.  
Well measured 4/10/2023 with no detection of groundwater

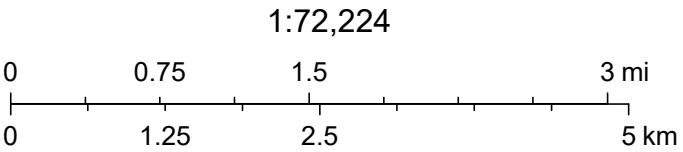
**Dry @ 105'**

# Dos Equis 12 Federal Com CTB (08.26.2024)



8/27/2024, 3:03:50 PM

- OSW Water Bodys
- OSE Streams



Texas Parks & Wildlife, CONANP, Esri, TomTom, Garmin, SafeGraph, GeoTechnologies, Inc, METI/NASA, USGS, EPA, NPS, USDA, USFWS, Esri, NASA, NGA, USGS, FEMA, NM OSE

Sante Fe Main Office  
Phone: (505) 476-3441

General Information  
Phone: (505) 629-6116

Online Phone Directory  
<https://www.emnrd.nm.gov/ocd/contact-us>

State of New Mexico  
Energy, Minerals and Natural Resources  
Oil Conservation Division  
1220 S. St Francis Dr.  
Santa Fe, NM 87505

QUESTIONS

Action 400892

QUESTIONS

Operator: CIMAREX ENERGY CO. 6001 Deauville Blvd Midland, TX 79706	OGRID: 215099
	Action Number: 400892
	Action Type: [C-141] Remediation Closure Request C-141 (C-141-v-Closure)

QUESTIONS

Prerequisites	
Incident ID (n#)	nAPP2424037623
Incident Name	NAPP2424037623 DOS EQUIS 12 FEDERAL COM CTB @ 0
Incident Type	Produced Water Release
Incident Status	Remediation Closure Report Received
Incident Facility	[fAPP2201248550] DOS EQUIS 12

Location of Release Source	
Please answer all the questions in this group.	
Site Name	Dos Equis 12 Federal Com CTB
Date Release Discovered	08/26/2024
Surface Owner	Federal

Incident Details	
Please answer all the questions in this group.	
Incident Type	Produced Water Release
Did this release result in a fire or is the result of a fire	No
Did this release result in any injuries	No
Has this release reached or does it have a reasonable probability of reaching a watercourse	No
Has this release endangered or does it have a reasonable probability of endangering public health	No
Has this release substantially damaged or will it substantially damage property or the environment	No
Is this release of a volume that is or may with reasonable probability be detrimental to fresh water	No

Nature and Volume of Release	
Material(s) released, please answer all that apply below. Any calculations or specific justifications for the volumes provided should be attached to the follow-up C-141 submission.	
Crude Oil Released (bbls) Details	Cause: Human Error   Tank (Any)   Crude Oil   Released: 3 BBL   Recovered: 3 BBL   Lost: 0 BBL.
Produced Water Released (bbls) Details	Cause: Human Error   Tank (Any)   Produced Water   Released: 124 BBL   Recovered: 124 BBL   Lost: 0 BBL.
Is the concentration of chloride in the produced water >10,000 mg/l	Yes
Condensate Released (bbls) Details	Not answered.
Natural Gas Vented (Mcf) Details	Not answered.
Natural Gas Flared (Mcf) Details	Not answered.
Other Released Details	Not answered.
Are there additional details for the questions above (i.e. any answer containing Other, Specify, Unknown, and/or Fire, or any negative lost amounts)	The incident is still under investigation. It appears after a water hauler pulled a load from the facility, the driver left the location while still connected to the load line. The tension on the 4" poly line caused the fiberglass load line connection to pop out of the fiberglass tank that was in service. A total of 127 barrels fluids was released from the tank and into the lined containment. All fluids remained inside the lined containment and were recovered by a vac truck. The containment will be pressure washed and a liner inspection will be scheduled in the coming weeks. Released: 127 barrels (3 barrels oil + 124 barrels water) Recovered: 127 barrels



Sante Fe Main Office  
Phone: (505) 476-3441

General Information  
Phone: (505) 629-6116

Online Phone Directory  
<https://www.emnrd.nm.gov/ocd/contact-us>

**State of New Mexico**  
**Energy, Minerals and Natural Resources**  
**Oil Conservation Division**  
**1220 S. St Francis Dr.**  
**Santa Fe, NM 87505**

QUESTIONS, Page 2

Action 400892

**QUESTIONS (continued)**

Operator: CIMAREX ENERGY CO. 6001 Deauville Blvd Midland, TX 79706	OGRID: 215099
	Action Number: 400892
	Action Type: [C-141] Remediation Closure Request C-141 (C-141-v-Closure)

**QUESTIONS**

Nature and Volume of Release (continued)	
Is this a gas only submission (i.e. only significant Mcf values reported)	No, according to supplied volumes this does not appear to be a "gas only" report.
Was this a major release as defined by Subsection A of 19.15.29.7 NMAC	Yes
Reasons why this would be considered a submission for a notification of a major release	From paragraph A. "Major release" determine using: (1) an unauthorized release of a volume, excluding gases, of 25 barrels or more.
With the implementation of the 19.15.27 NMAC (05/25/2021), venting and/or flaring of natural gas (i.e. gas only) are to be submitted on the C-129 form.	

**Initial Response**

The responsible party must undertake the following actions immediately unless they could create a safety hazard that would result in injury.

The source of the release has been stopped	True
The impacted area has been secured to protect human health and the environment	True
Released materials have been contained via the use of berms or dikes, absorbent pads, or other containment devices	True
All free liquids and recoverable materials have been removed and managed appropriately	True
If all the actions described above have not been undertaken, explain why	Not answered.

Per Paragraph (4) of Subsection B of 19.15.29.8 NMAC the responsible party may commence remediation immediately after discovery of a release. If remediation has begun, please prepare and attach a narrative of actions to date in the follow-up C-141 submission. If remedial efforts have been successfully completed or if the release occurred within a lined containment area (see Subparagraph (a) of Paragraph (5) of Subsection A of 19.15.29.11 NMAC), please prepare and attach all information needed for closure evaluation in the follow-up C-141 submission.

I hereby certify that the information given above is true and complete to the best of my knowledge and understand that pursuant to OCD rules and regulations all operators are required to report and/or file certain release notifications and perform corrective actions for releases which may endanger public health or the environment. The acceptance of a C-141 report by the OCD does not relieve the operator of liability should their operations have failed to adequately investigate and remediate contamination that pose a threat to groundwater, surface water, human health or the environment. In addition, OCD acceptance of a C-141 report does not relieve the operator of responsibility for compliance with any other federal, state, or local laws and/or regulations.

I hereby agree and sign off to the above statement	Name: Laci Luig Title: ES&H Specialist Email: DL_PermianEnvironmental@coterra.com Date: 08/28/2024
--	---

Sante Fe Main Office  
Phone: (505) 476-3441

General Information  
Phone: (505) 629-6116

Online Phone Directory  
<https://www.emnrd.nm.gov/ocd/contact-us>

**State of New Mexico**  
**Energy, Minerals and Natural Resources**  
**Oil Conservation Division**  
**1220 S. St Francis Dr.**  
**Santa Fe, NM 87505**

QUESTIONS, Page 3

Action 400892

**QUESTIONS (continued)**

Operator: CIMAREX ENERGY CO. 6001 Deauville Blvd Midland, TX 79706	OGRID:
	215099
	Action Number:
	400892
Action Type:	
[C-141] Remediation Closure Request C-141 (C-141-v-Closure)	

**QUESTIONS****Site Characterization**

Please answer all the questions in this group (only required when seeking remediation plan approval and beyond). This information must be provided to the appropriate district office no later than 90 days after the release discovery date.

What is the shallowest depth to groundwater beneath the area affected by the release in feet below ground surface (ft bgs)	Between 100 and 500 (ft.)
What method was used to determine the depth to ground water	U.S. Geological Survey
Did this release impact groundwater or surface water	No
<b>What is the minimum distance, between the closest lateral extents of the release and the following surface areas:</b>	
A continuously flowing watercourse or any other significant watercourse	Between 1 and 5 (mi.)
Any lakebed, sinkhole, or playa lake (measured from the ordinary high-water mark)	Between 1 and 5 (mi.)
An occupied permanent residence, school, hospital, institution, or church	Greater than 5 (mi.)
A spring or a private domestic fresh water well used by less than five households for domestic or stock watering purposes	Greater than 5 (mi.)
Any other fresh water well or spring	Between 1 and 5 (mi.)
Incorporated municipal boundaries or a defined municipal fresh water well field	Greater than 5 (mi.)
A wetland	Between 1 and 5 (mi.)
A subsurface mine	Greater than 5 (mi.)
An (non-karst) unstable area	Greater than 5 (mi.)
Categorize the risk of this well / site being in a karst geology	Low
A 100-year floodplain	Between 1 and 5 (mi.)
Did the release impact areas not on an exploration, development, production, or storage site	No

**Remediation Plan**

Please answer all the questions that apply or are indicated. This information must be provided to the appropriate district office no later than 90 days after the release discovery date.

Requesting a remediation plan approval with this submission	Yes
<i>Attach a comprehensive report demonstrating the lateral and vertical extents of soil contamination associated with the release have been determined, pursuant to 19.15.29.11 NMAC and 19.15.29.13 NMAC.</i>	
Have the lateral and vertical extents of contamination been fully delineated	Yes
Was this release entirely contained within a lined containment area	Yes
<i>Per Subsection B of 19.15.29.11 NMAC unless the site characterization report includes completed efforts at remediation, the report must include a proposed remediation plan in accordance with 19.15.29.12 NMAC, which includes the anticipated timelines for beginning and completing the remediation.</i>	
On what estimated date will the remediation commence	10/04/2024
On what date will (or did) the final sampling or liner inspection occur	10/09/2024
On what date will (or was) the remediation complete(d)	10/04/2024
What is the estimated surface area (in square feet) that will be remediated	15110
What is the estimated volume (in cubic yards) that will be remediated	0
<i>These estimated dates and measurements are recognized to be the best guess or calculation at the time of submission and may (be) change(d) over time as more remediation efforts are completed.</i>	
<i>The OCD recognizes that proposed remediation measures may have to be minimally adjusted in accordance with the physical realities encountered during remediation. If the responsible party has any need to significantly deviate from the remediation plan proposed, then it should consult with the division to determine if another remediation plan submission is required.</i>	

Sante Fe Main Office  
Phone: (505) 476-3441

General Information  
Phone: (505) 629-6116

Online Phone Directory  
<https://www.emnrd.nm.gov/ocd/contact-us>

**State of New Mexico**  
**Energy, Minerals and Natural Resources**  
**Oil Conservation Division**  
**1220 S. St Francis Dr.**  
**Santa Fe, NM 87505**

QUESTIONS, Page 4

Action 400892

**QUESTIONS (continued)**

Operator: CIMAREX ENERGY CO. 6001 Deauville Blvd Midland, TX 79706	OGRID: 215099
	Action Number: 400892
	Action Type: [C-141] Remediation Closure Request C-141 (C-141-v-Closure)

**QUESTIONS**

<b>Remediation Plan (continued)</b>	
<i>Please answer all the questions that apply or are indicated. This information must be provided to the appropriate district office no later than 90 days after the release discovery date.</i>	
<b>This remediation will (or is expected to) utilize the following processes to remediate / reduce contaminants:</b>	
<i>(Select all answers below that apply.)</i>	
Is (or was) there affected material present needing to be removed	Yes
Is (or was) there a power wash of the lined containment area (to be) performed	Yes
OTHER (Non-listed remedial process)	No
<i>Per Subsection B of 19.15.29.11 NMAC unless the site characterization report includes completed efforts at remediation, the report must include a proposed remediation plan in accordance with 19.15.29.12 NMAC, which includes the anticipated timelines for beginning and completing the remediation.</i>	
I hereby certify that the information given above is true and complete to the best of my knowledge and understand that pursuant to OCD rules and regulations all operators are required to report and/or file certain release notifications and perform corrective actions for releases which may endanger public health or the environment. The acceptance of a C-141 report by the OCD does not relieve the operator of liability should their operations have failed to adequately investigate and remediate contamination that pose a threat to groundwater, surface water, human health or the environment. In addition, OCD acceptance of a C-141 report does not relieve the operator of responsibility for compliance with any other federal, state, or local laws and/or regulations.	
I hereby agree and sign off to the above statement	Name: Laci Luig Title: ES&H Specialist Email: DL_PermianEnvironmental@coterra.com Date: 11/08/2024
<i>The OCD recognizes that proposed remediation measures may have to be minimally adjusted in accordance with the physical realities encountered during remediation. If the responsible party has any need to significantly deviate from the remediation plan proposed, then it should consult with the division to determine if another remediation plan submission is required.</i>	

Sante Fe Main Office  
Phone: (505) 476-3441

General Information  
Phone: (505) 629-6116

Online Phone Directory  
<https://www.emnrd.nm.gov/ocd/contact-us>

**State of New Mexico**  
**Energy, Minerals and Natural Resources**  
**Oil Conservation Division**  
**1220 S. St Francis Dr.**  
**Santa Fe, NM 87505**

QUESTIONS, Page 6

Action 400892

**QUESTIONS (continued)**

Operator: CIMAREX ENERGY CO. 6001 Deauville Blvd Midland, TX 79706	OGRID: 215099
	Action Number: 400892
	Action Type: [C-141] Remediation Closure Request C-141 (C-141-v-Closure)

**QUESTIONS**

<b>Liner Inspection Information</b>	
Last liner inspection notification (C-141L) recorded	<b>390291</b>
Liner inspection date pursuant to Subparagraph (a) of Paragraph (5) of Subsection A of 19.15.29.11 NMAC	<b>10/09/2024</b>
Was all the impacted materials removed from the liner	<b>Yes</b>
What was the liner inspection surface area in square feet	<b>15110</b>

**Remediation Closure Request**

*Only answer the questions in this group if seeking remediation closure for this release because all remediation steps have been completed.*

Requesting a remediation closure approval with this submission	<b>Yes</b>
Have the lateral and vertical extents of contamination been fully delineated	<b>Yes</b>
Was this release entirely contained within a lined containment area	<b>Yes</b>
What was the total surface area (in square feet) remediated	<b>15110</b>
What was the total volume (cubic yards) remediated	<b>0</b>
Summarize any additional remediation activities not included by answers (above)	<b>Vac trucks recovered released fluids from the lined containment. The containment was then pressure washed to remove any remaining impact on the liner. All fluids were recovered.</b>

*The responsible party must attach information demonstrating they have complied with all applicable closure requirements and any conditions or directives of the OCD. This demonstration should be in the form of a comprehensive report (in .pdf format) including a scaled site map, sampling diagrams, relevant field notes, photographs of any excavation prior to backfilling, laboratory data including chain of custody documents of final sampling, and a narrative of the remedial activities. Refer to 19.15.29.12 NMAC.*

I hereby certify that the information given above is true and complete to the best of my knowledge and understand that pursuant to OCD rules and regulations all operators are required to report and/or file certain release notifications and perform corrective actions for releases which may endanger public health or the environment. The acceptance of a C-141 report by the OCD does not relieve the operator of liability should their operations have failed to adequately investigate and remediate contamination that pose a threat to groundwater, surface water, human health or the environment. In addition, OCD acceptance of a C-141 report does not relieve the operator of responsibility for compliance with any other federal, state, or local laws and/or regulations. The responsible party acknowledges they must substantially restore, reclaim, and re-vegetate the impacted surface area to the conditions that existed prior to the release or their final land use in accordance with 19.15.29.13 NMAC including notification to the OCD when reclamation and re-vegetation are complete.

I hereby agree and sign off to the above statement	Name: Laci Luig Title: ES&H Specialist Email: DL_PermianEnvironmental@coterra.com Date: 11/08/2024
--	---

Sante Fe Main Office  
Phone: (505) 476-3441

General Information  
Phone: (505) 629-6116

Online Phone Directory  
<https://www.emnrd.nm.gov/ocd/contact-us>

State of New Mexico  
Energy, Minerals and Natural Resources  
Oil Conservation Division  
1220 S. St Francis Dr.  
Santa Fe, NM 87505

CONDITIONS

Action 400892

CONDITIONS

Operator:  CIMAREX ENERGY CO. 6001 Deauville Blvd Midland, TX 79706	OGRID:  215099
	Action Number:  400892
	Action Type:  [C-141] Remediation Closure Request C-141 (C-141-v-Closure)

CONDITIONS

Created By	Condition	Condition Date
nvez	Liner inspection approved, release resolved.	12/6/2024