



13212 N MacArthur Blvd
Oklahoma City, Oklahoma 73142
Tel. 832.374.0004
ntgenvironmental.com

November 21, 2024

Mike Bratcher
District Supervisor
Oil Conservation District
811 S. First Street
Artesia, New Mexico 88210

**Re: Incident Closure Report
Caza Operating, LLC
Sioux 25-36 CTB
Unit B, Section 25, Township 25S, Range 35E
Site Coordinates: 32.1081, -103.321244
Lea County, New Mexico
Incident ID: nAPP2217938749**

Introduction

NTG Environmental, LLC (NTGE), on behalf of Caza Operating, LLC (Caza), submits this Incident Closure Report to the New Mexico Oil Conservation Division (NMOCD). This report provides documentation of liner inspection activities conducted to date in the affected areas at the Sioux 25-36 CTB (Site). The Site is in Unit Letter B, Section 25, of Township 25 South and Range 35 East in Lea County, New Mexico. The GPS coordinates for the release site are 32.1081° N Latitude and -103.321244° W Longitude. The Site location with respect to the nearest town is shown on Figure 1 and the topography of the area is shown on Figure 2.

Background

Based on the initial C-141 submitted by Caza and obtained by the New Mexico Oil Conservation District (NMOCD), the release was discovered on June 27, 2022. The release was the result of an equipment failure (separator), resulting in the release of twenty (20) barrels (bbls) of crude oil into lined containment, of which twenty (20) bbls were recovered. Upon discovery the well was shut-in, and the area was secure. The liner area is shown in Figure 3.

Groundwater and Site Characterization

Based on a review of the New Mexico Office of State Engineers and USGS databases, there are no known water sources within a ½-mile radius of the Site. No other receptors (playas, wetlands, waterways, lakebeds, or ordinance boundaries) are located within each specific boundary or distance from the Site. According to the Karst Potential Map, the Site is located within a Low

**Creating a Better Environment
For Oil & Gas Operations**

Karst area. The Site characterization documentation (Points of Diversion, Karst Potential, Significant Watercourse Map, Wetlands Map, and FEMA Map) is attached to the report.

NTGE characterized the Site according to Table I, Closure Criteria for Soils Impacted by a Release, from the New Mexico Administrative Code (NMCA) Title 19, Chapter 15, Part 29, Section 12 (NMAC 19.15.29.12).

General Site Characterization and Groundwater:

Site Characterization	Average Groundwater Depth (ft)
Low Karst	Unknown

Table 3.1 Closure Criteria for Soils Impacted by a Release (NMAC 19.15.29.12 & 19.15.29.13)

Regulatory Standard	Chloride	TPH (GRO+DRO+MRO)	TPH (GRO+MRO)	BTEX	Benzene
19.15.29.12 NMAC Table I Closure Criteria for Soils Impacted by a Release	600 mg/kg	100 mg/kg	---	50 mg/kg	10 mg/kg
Notes: --- = not defined					

Liner Inspection Activities


On November 13, 2024, NTGE conducted site assessment activities to assess the integrity and state of the tank battery's secondary containment liner. Upon inspection it was noted that the liner was intact with no visible holes or breaches, and free of any standing fluids. A photographic log documenting the condition of the liner at the time of the inspection is attached.

Closure Request

Based on the assessment and subsequent site assessment activities, the Site is compliant with NMOCD's regulatory requirements, and no further actions are required at the Site. Caza formally requests closure for the Site (nAPP2217938749). If you have any questions regarding this report or need additional information, please contact us on (832) 374-0004.

Sincerely,

NTG Environmental



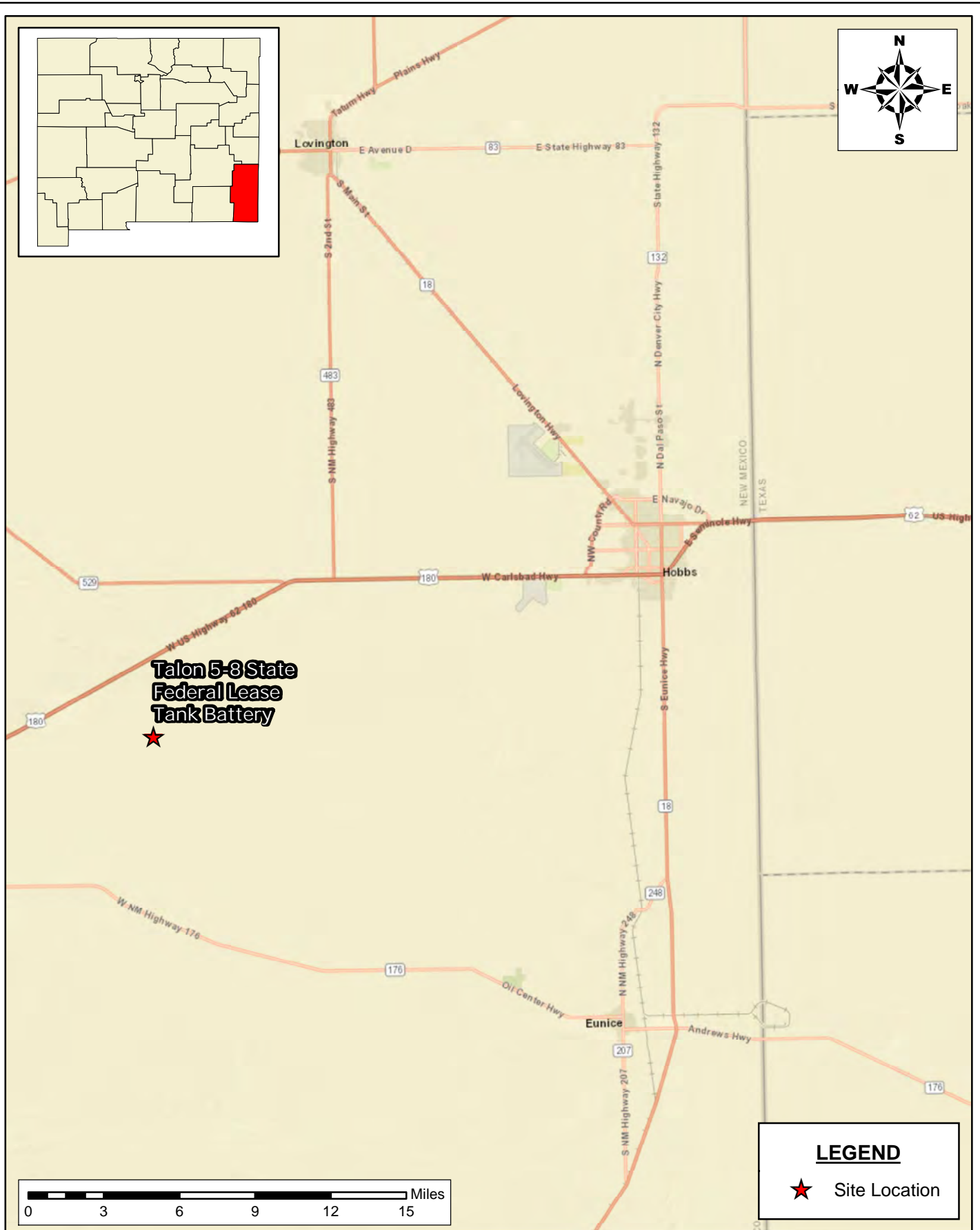
Kellan Smith
Project Manager

Attachments:

Figures
Site Characterization
Photographic Log

Figures

Document Path: C:\Users\ntg\gis\New Tech Global\NTGE - Documents\NTGE - Projects\2024 PROJECTS\CAZA\SC\248980 - Sioux 25-36 CTB\7 - Figures\GIS\Figure_1_SL.mxd



SITE LOCATION MAP
SITE ASSESSMENT AND INCIDENT CLOSURE REPORT
 CAZA OPERATING, LLC
 SIOUX 25-36 CTB
 LEA COUNTY, NEW MEXICO

SCALE: As Shown Date: 11/21/2024 PROJECT #: 248980



New Tech Global Environmental, LLC
 911 Regional Park Drive
 Houston, Texas 77060
 T - 281.872.9300
 F - 281.872.4521
 Web: www.ntgenviroinmental.com

NOTES:

1. Base Image: ESRI Maps & Data 2013
2. Map Projection: NAD 1983

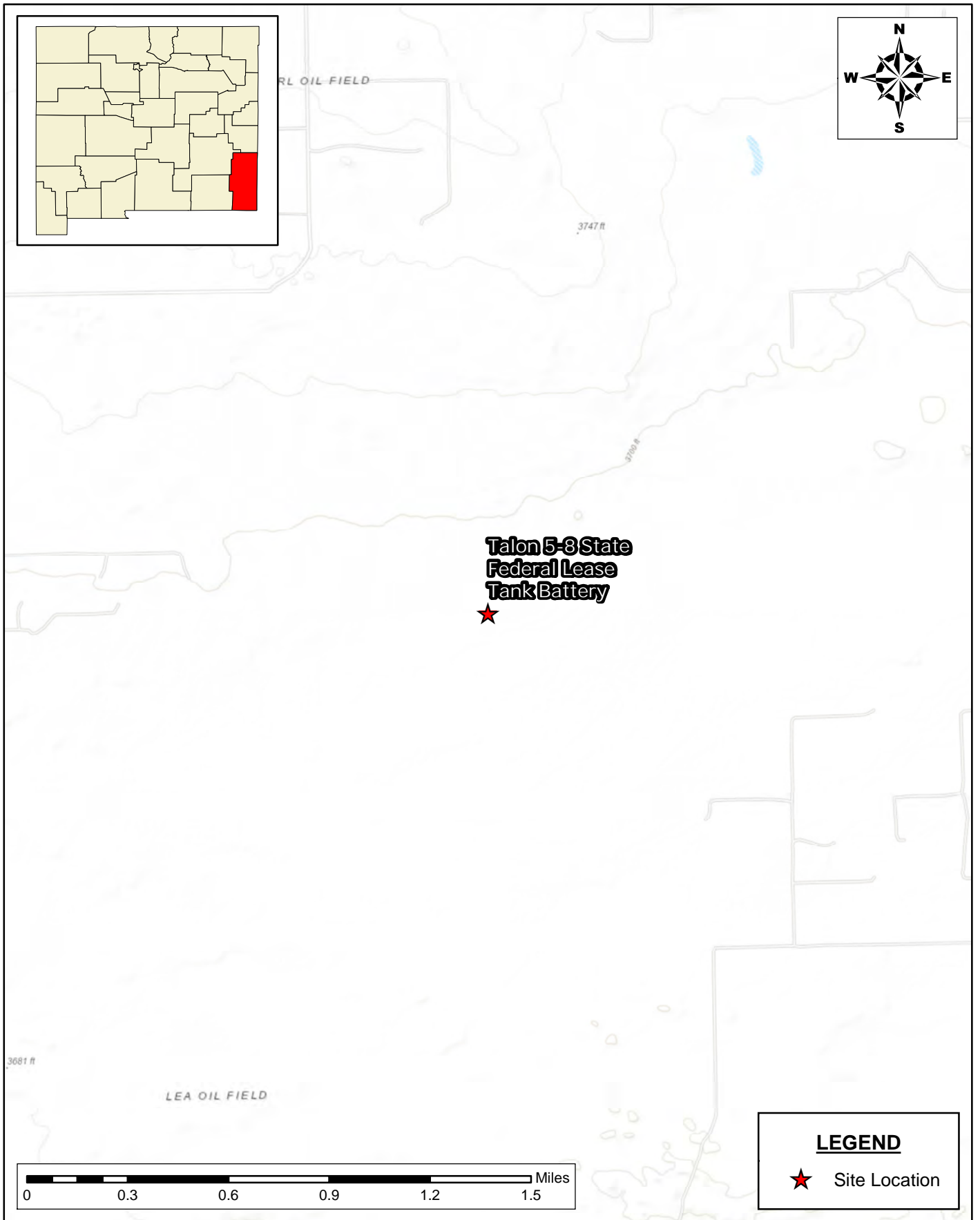
DRAWING NUMBER:

FIGURE 1

SHEET NUMBER:

1 of 1

Document Path: C:\Users\ntg\gis\New Tech Global\NTGE - Documents\NTGE - Projects\2024 PROJECTS\CAZA\RSC\248980 - Sioux 25-36 CTB\7- Figures\GIS\Figure_2_TM.mxd



**TOPOGRAPHIC MAP
SITE ASSESSMENT AND INCIDENT CLOSURE REPORT**
CAZA OPERATING, LLC
SIOUX 25-36 CTB
LEA COUNTY, NEW MEXICO

SCALE: As Shown Date: 11/21/2024 PROJECT #: 248980



New Tech Global Environmental, LLC
911 Regional Park Drive
Houston, Texas 77060
T - 281.872.9300
F - 281.872.4521
Web: www.ntgenviromental.com

NOTES:

1. Base Image: ESRI Maps & Data 2013
2. Map Projection: NAD 1983

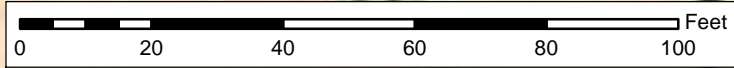
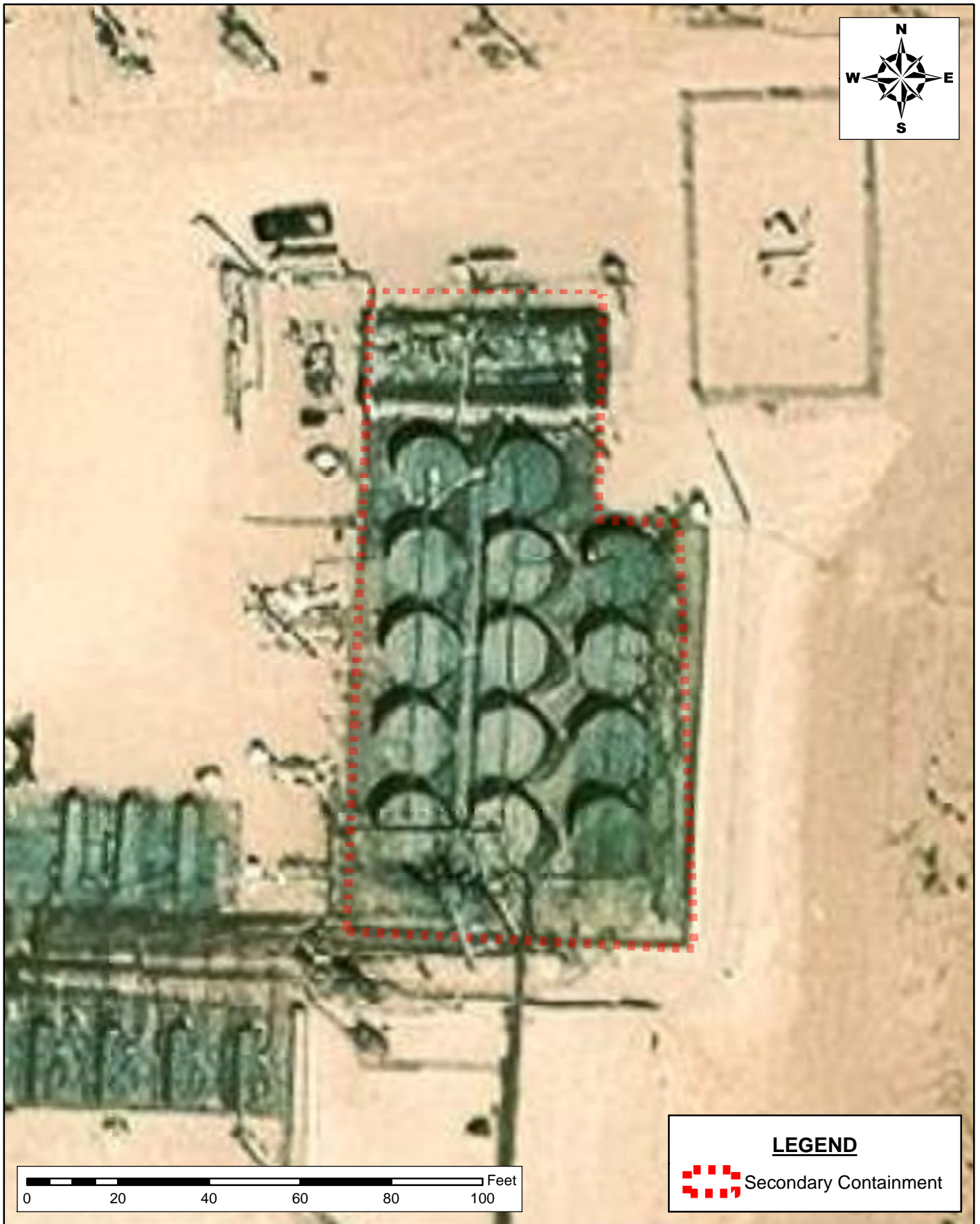
DRAWING NUMBER:

FIGURE 2


SHEET NUMBER:

1 of 1

Document Path: C:\Users\ntg\gis\New Tech Global\NTGE - Documents\NTGE - Projects\2024 PROJECTS\CAZA\RSC\248980 - Sioux 25-36 CTB\ - Figures\GIS\Figure_3_SC.mxd



LEGEND

 Secondary Containment

SECONDARY CONTAINMENT MAP
SITE ASSESSMENT AND INCIDENT CLOSURE REPORT
CAZA OPERATING, LLC
SIOUX 25-36 CTB
LEA COUNTY, NEW MEXICO

SCALE: As Shown Date: 11/21/2024 PROJECT #: 248980



New Tech Global Environmental, LLC
911 Regional Park Drive
Houston, Texas 77060
T - 281.872.9300
F - 281.872.4521
Web: www.ntgenviroinmental.com

NOTES:

1. Base Image: ESRI Maps & Data 2013
2. Map Projection: NAD 1983

DRAWING NUMBER:

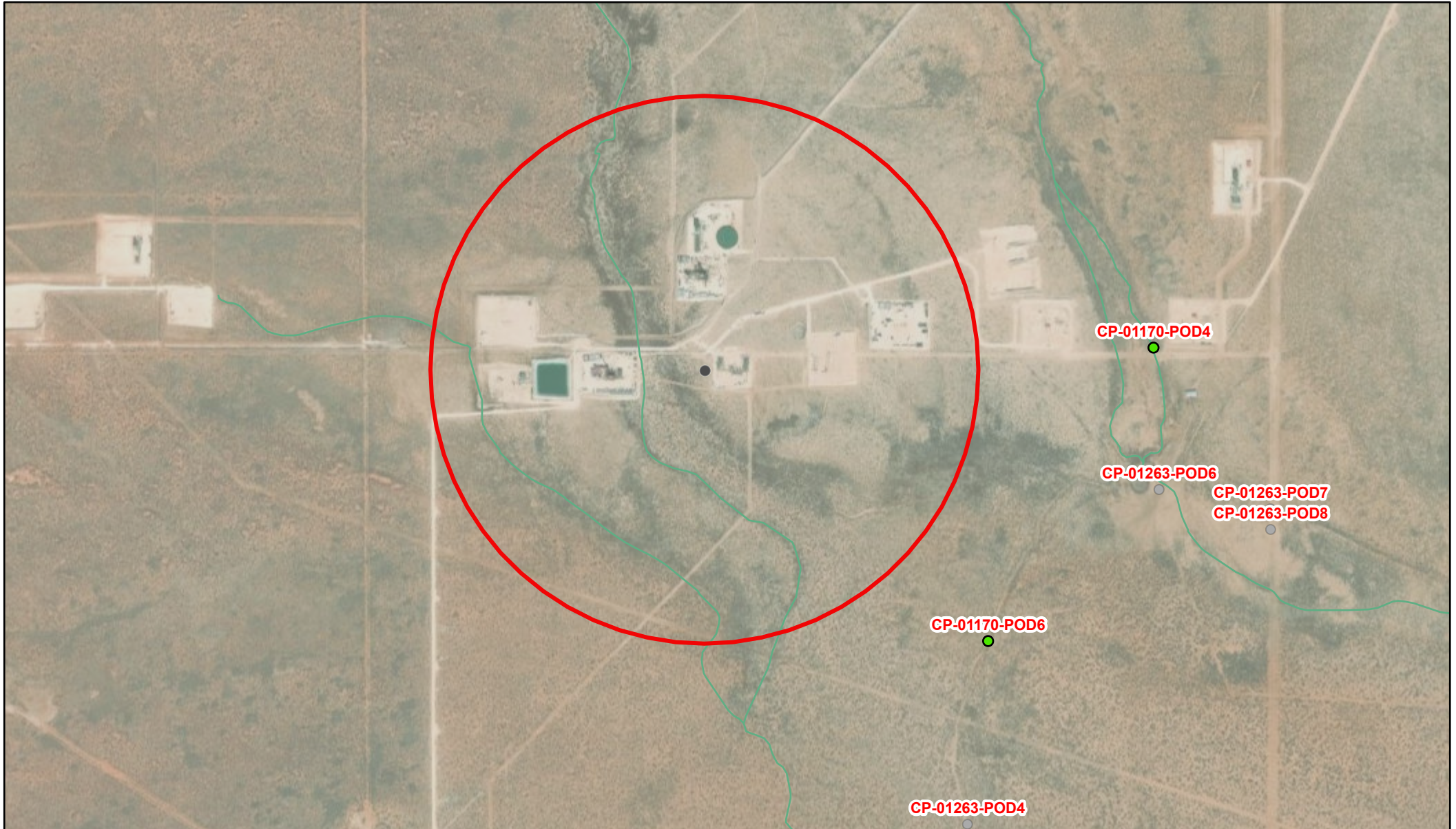
FIGURE 3

SHEET NUMBER:

1 of 1

Site Characterization

OSE POD Location Map



7/31/2024, 1:06:45 PM


 Override 1

GIS WATERS PODs

 OSE District Boundary

 Pending

Water Right Regulations

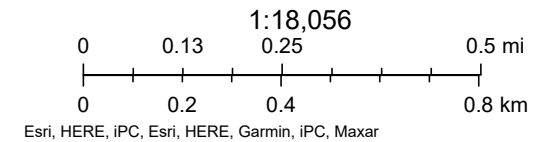
 Closure Area

 Artesian Planning Area

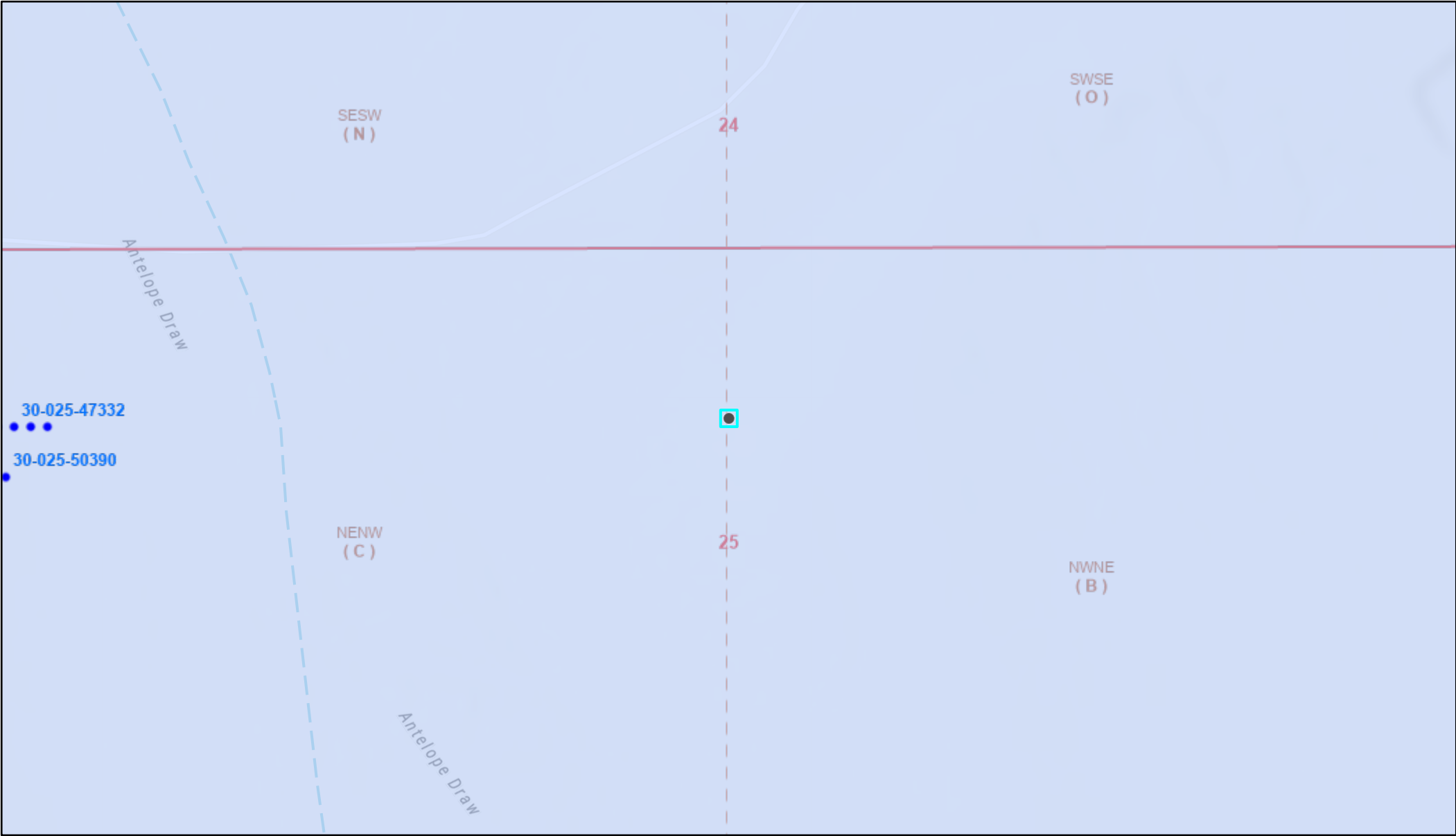
NHD Flowlines

 Artificial Path

 Stream River



OCD Well Locations

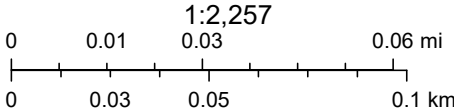


7/31/2024, 1:08:18 PM

Wells - Large Scale Karst Occurrence Potential

- PLSS Second Division
- PLSS First Division

Oil, New Low






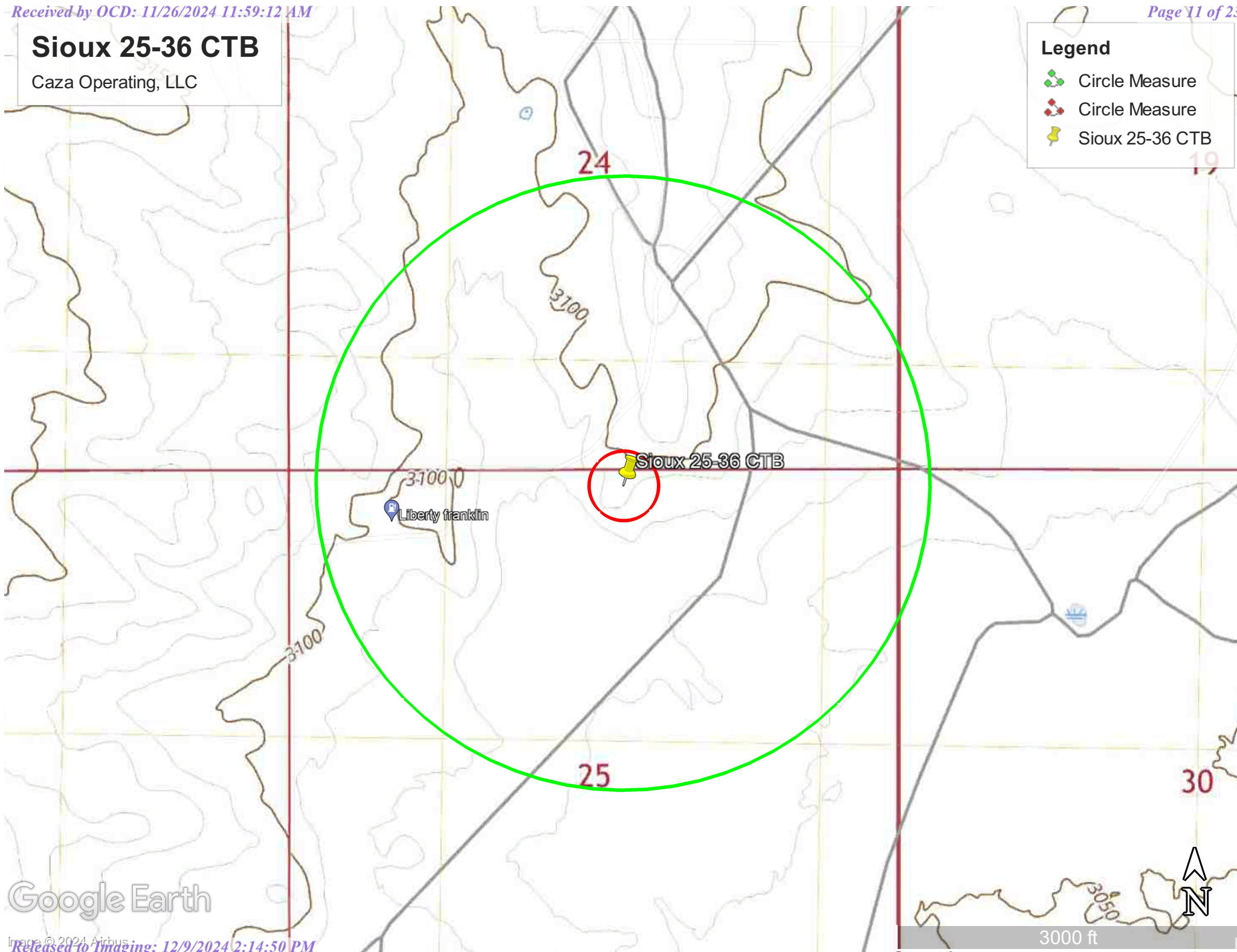
BLM, OCD, New Mexico Tech, Esri Community Maps Contributors, Texas Parks & Wildlife, © OpenStreetMap, Microsoft, CONANP, Esri, TomTom, Garmin, SafeGraph, GeoTechnologies, Inc, METI/NASA, USGS, EPA, NPS, US Census Bureau, USDA, USFWS, Oil Conservation Division of the New Mexico Energy,

Sioux 25-36 CTB

Caza Operating, LLC

Legend

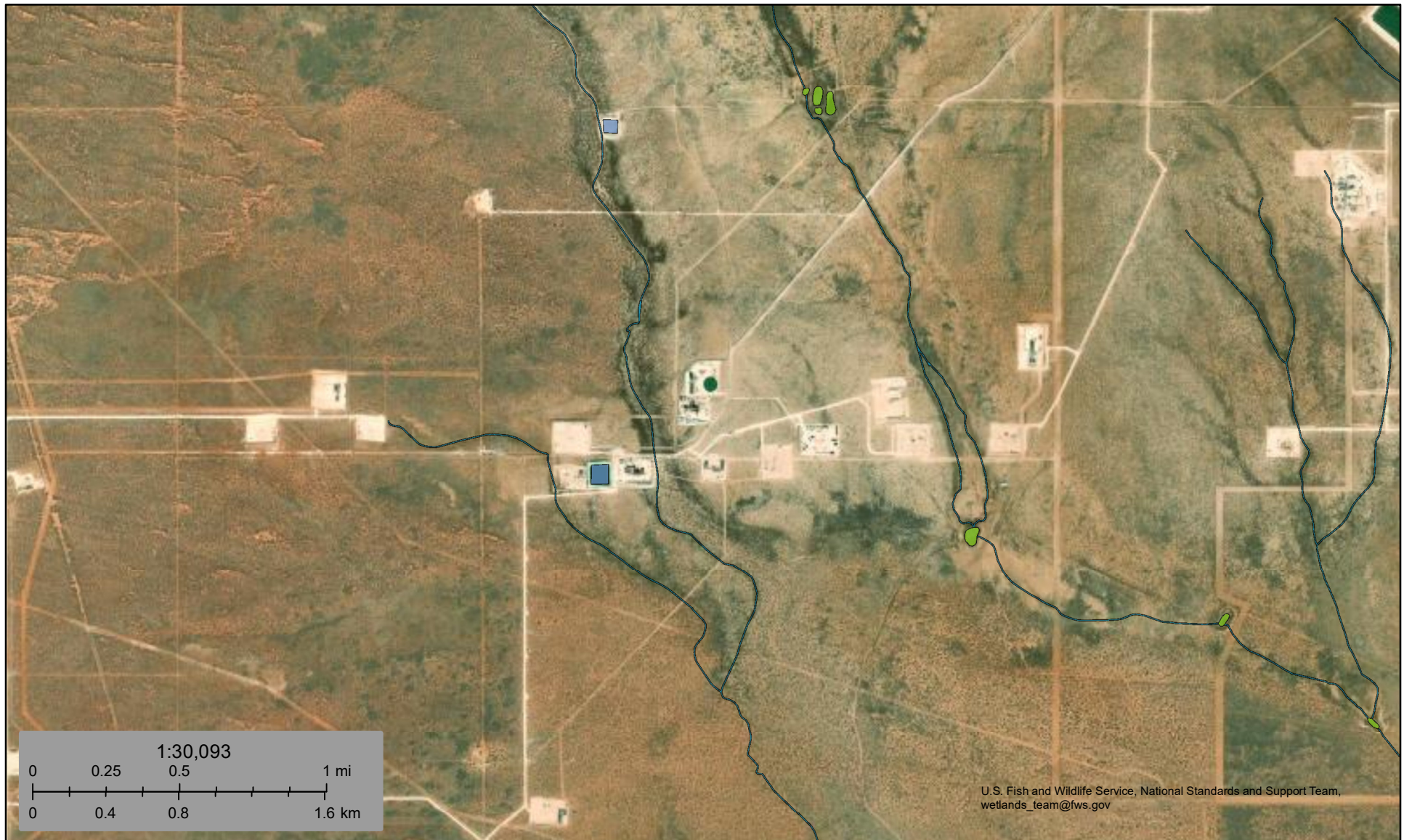
-  Circle Measure
-  Circle Measure
-  Sioux 25-36 CTB



Google Earth








Wetlands



September 4, 2024

Wetlands

-  Estuarine and Marine Deepwater
-  Estuarine and Marine Wetland

-  Freshwater Emergent Wetland
-  Freshwater Forested/Shrub Wetland
-  Freshwater Pond

-  Lake
-  Other
-  Riverine

This map is for general reference only. The US Fish and Wildlife Service is not responsible for the accuracy or currentness of the base data shown on this map. All wetlands related data should be used in accordance with the layer metadata found on the Wetlands Mapper web site.

National Flood Hazard Layer FIRMMette



103°19'35"W 32°6'44"N



0 250 500 1,000 1,500 2,000 Feet

1:6,000

103°18'58"W 32°6'14"N

Released to Imaging: 12/9/2024 2:14:50 PM

Basemap Imagery Source: USGS National Map 2023

Legend

SEE FIS REPORT FOR DETAILED LEGEND AND INDEX MAP FOR FIRM PANEL LAYOUT

SPECIAL FLOOD HAZARD AREAS		Without Base Flood Elevation (BFE) Zone A, V, A99
		With BFE or Depth Zone AE, AO, AH, VE, AR
		Regulatory Floodway
OTHER AREAS OF FLOOD HAZARD		0.2% Annual Chance Flood Hazard, Areas of 1% annual chance flood with average depth less than one foot or with drainage areas of less than one square mile Zone X
		Future Conditions 1% Annual Chance Flood Hazard Zone X
		Area with Reduced Flood Risk due to Levee. See Notes. Zone X
		Area with Flood Risk due to Levee Zone D
OTHER AREAS		NO SCREEN Area of Minimal Flood Hazard Zone X
		Effective LOMRs
		Area of Undetermined Flood Hazard Zone D
GENERAL STRUCTURES		Channel, Culvert, or Storm Sewer
		Levee, Dike, or Floodwall
OTHER FEATURES		20.2 Cross Sections with 1% Annual Chance
		17.5 Water Surface Elevation
		Coastal Transect
		Base Flood Elevation Line (BFE)
		Limit of Study
		Jurisdiction Boundary
		Coastal Transect Baseline
MAP PANELS		Digital Data Available
		No Digital Data Available
		Unmapped



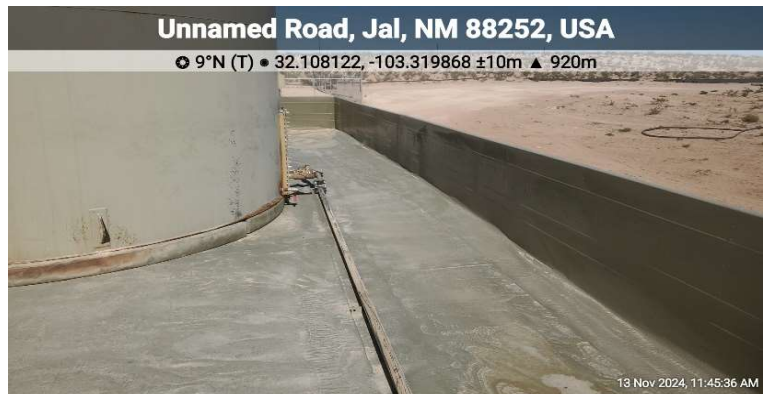
The pin displayed on the map is an approximate point selected by the user and does not represent an authoritative property location.

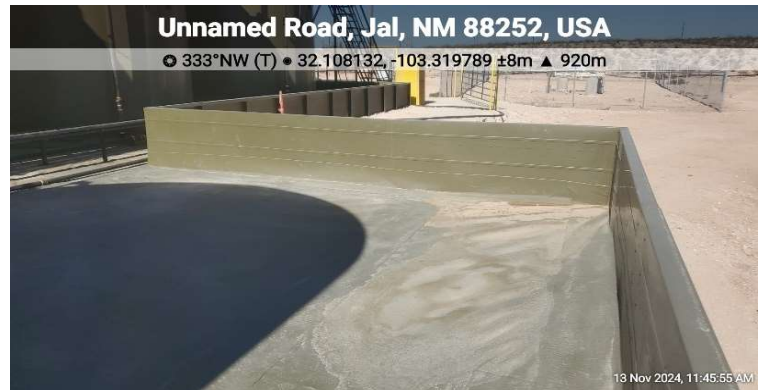
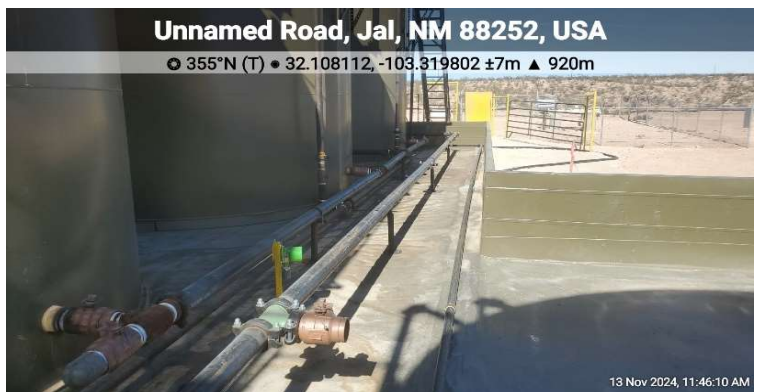
This map complies with FEMA's standards for the use of digital flood maps if it is not void as described below. The basemap shown complies with FEMA's basemap accuracy standards

The flood hazard information is derived directly from the authoritative NFHL web services provided by FEMA. This map was exported on 7/31/2024 at 3:09 PM and does not reflect changes or amendments subsequent to this date and time. The NFHL and effective information may change or become superseded by new data over time.

This map image is void if the one or more of the following map elements do not appear: basemap imagery, flood zone labels, legend, scale bar, map creation date, community identifiers, FIRM panel number, and FIRM effective date. Map images for unmapped and unmodernized areas cannot be used for regulatory purposes.

Photographic Log

PHOTOGRAPHIC LOG**Caza Operating, LLC
Sioux 25-36 CTB****Photograph No. 1****Facility:** Sioux 25-36 CTB**County:** Lea County, New Mexico**Description:**
View of Liner**Photograph No. 2****Facility:** Sioux 25-36 CTB**County:** Lea County, New Mexico**Description:**
View of Liner**Photograph No. 3****Facility:** Sioux 25-36 CTB**County:** Lea County, New Mexico**Description:**
View of Liner

PHOTOGRAPHIC LOG**Caza Operating, LLC
Sioux 25-36 CTB****Photograph No. 4****Facility:** Sioux 25-36 CTB**County:** Lea County, New Mexico**Description:**
View of Liner**Photograph No. 5****Facility:** Sioux 25-36 CTB**County:** Lea County, New Mexico**Description:**
View of Liner**Photograph No. 6****Facility:** Sioux 25-36 CTB**County:** Lea County, New Mexico**Description:**
View of Liner

PHOTOGRAPHIC LOG**Caza Operating, LLC
Sioux 25-36 CTB****Photograph No. 7****Facility:** Sioux 25-36 CTB**County:** Lea County, New Mexico**Description:**
View of Liner**Photograph No. 8****Facility:** Sioux 25-36 CTB**County:** Lea County, New Mexico**Description:**
View of Liner**Photograph No. 9****Facility:** Sioux 25-36 CTB**County:** Lea County, New Mexico**Description:**
View of Liner

Sante Fe Main Office
Phone: (505) 476-3441

General Information
Phone: (505) 629-6116

Online Phone Directory
<https://www.emnrd.nm.gov/ocd/contact-us>

State of New Mexico
Energy, Minerals and Natural Resources
Oil Conservation Division
1220 S. St Francis Dr.
Santa Fe, NM 87505

QUESTIONS

Action 406730

QUESTIONS

Operator: CAZA OPERATING, LLC 200 N Loraine St Midland, TX 79701	OGRID: 249099
	Action Number: 406730
	Action Type: [C-141] Remediation Closure Request C-141 (C-141-v-Closure)

QUESTIONS

Prerequisites	
Incident ID (n#)	nAPP2217938749
Incident Name	NAPP2217938749 SIOUX 25-36 CTB @ 0
Incident Type	Oil Release
Incident Status	Remediation Closure Report Received

Location of Release Source

Please answer all the questions in this group.

Site Name	Sioux 25-36 CTB
Date Release Discovered	06/27/2022
Surface Owner	Private

Incident Details

Please answer all the questions in this group.

Incident Type	Oil Release
Did this release result in a fire or is the result of a fire	No
Did this release result in any injuries	No
Has this release reached or does it have a reasonable probability of reaching a watercourse	No
Has this release endangered or does it have a reasonable probability of endangering public health	No
Has this release substantially damaged or will it substantially damage property or the environment	No
Is this release of a volume that is or may with reasonable probability be detrimental to fresh water	No

Nature and Volume of Release

Material(s) released, please answer all that apply below. Any calculations or specific justifications for the volumes provided should be attached to the follow-up C-141 submission.

Crude Oil Released (bbls) Details	Cause: Equipment Failure Separator Crude Oil Released: 20 BBL Recovered: 20 BBL Lost: 0 BBL.
Produced Water Released (bbls) Details	Not answered.
Is the concentration of chloride in the produced water >10,000 mg/l	No
Condensate Released (bbls) Details	Not answered.
Natural Gas Vented (Mcf) Details	Not answered.
Natural Gas Flared (Mcf) Details	Not answered.
Other Released Details	Not answered.
Are there additional details for the questions above (i.e. any answer containing Other, Specify, Unknown, and/or Fire, or any negative lost amounts)	Not answered.

Sante Fe Main Office
Phone: (505) 476-3441

General Information
Phone: (505) 629-6116

Online Phone Directory
<https://www.emnrd.nm.gov/ocd/contact-us>

State of New Mexico
Energy, Minerals and Natural Resources
Oil Conservation Division
1220 S. St Francis Dr.
Santa Fe, NM 87505

QUESTIONS, Page 2

Action 406730

QUESTIONS (continued)

Operator: CAZA OPERATING, LLC 200 N Loraine St Midland, TX 79701	OGRID: 249099
	Action Number: 406730
	Action Type: [C-141] Remediation Closure Request C-141 (C-141-v-Closure)

QUESTIONS

Nature and Volume of Release (continued)	
Is this a gas only submission (i.e. only significant Mcf values reported)	No, according to supplied volumes this does not appear to be a "gas only" report.
Was this a major release as defined by Subsection A of 19.15.29.7 NMAC	No
Reasons why this would be considered a submission for a notification of a major release	Unavailable.
With the implementation of the 19.15.27 NMAC (05/25/2021), venting and/or flaring of natural gas (i.e. gas only) are to be submitted on the C-129 form.	

Initial Response

The responsible party must undertake the following actions immediately unless they could create a safety hazard that would result in injury.

The source of the release has been stopped	True
The impacted area has been secured to protect human health and the environment	True
Released materials have been contained via the use of berms or dikes, absorbent pads, or other containment devices	True
All free liquids and recoverable materials have been removed and managed appropriately	True
If all the actions described above have not been undertaken, explain why	Not answered.

Per Paragraph (4) of Subsection B of 19.15.29.8 NMAC the responsible party may commence remediation immediately after discovery of a release. If remediation has begun, please prepare and attach a narrative of actions to date in the follow-up C-141 submission. If remedial efforts have been successfully completed or if the release occurred within a lined containment area (see Subparagraph (a) of Paragraph (5) of Subsection A of 19.15.29.11 NMAC), please prepare and attach all information needed for closure evaluation in the follow-up C-141 submission.

I hereby certify that the information given above is true and complete to the best of my knowledge and understand that pursuant to OCD rules and regulations all operators are required to report and/or file certain release notifications and perform corrective actions for releases which may endanger public health or the environment. The acceptance of a C-141 report by the OCD does not relieve the operator of liability should their operations have failed to adequately investigate and remediate contamination that pose a threat to groundwater, surface water, human health or the environment. In addition, OCD acceptance of a C-141 report does not relieve the operator of responsibility for compliance with any other federal, state, or local laws and/or regulations.

I hereby agree and sign off to the above statement	Name: Kelly Arrendondo Title: Production Reporting Manager Email: karredondo@ntglobal.com Date: 08/14/2024
--	---

Sante Fe Main Office
Phone: (505) 476-3441

General Information
Phone: (505) 629-6116

Online Phone Directory
<https://www.emnrd.nm.gov/ocd/contact-us>

State of New Mexico
Energy, Minerals and Natural Resources
Oil Conservation Division
1220 S. St Francis Dr.
Santa Fe, NM 87505

QUESTIONS, Page 3

Action 406730

QUESTIONS (continued)

Operator: CAZA OPERATING, LLC 200 N Loraine St Midland, TX 79701	OGRID:
	249099
	Action Number:
	406730
Action Type:	
[C-141] Remediation Closure Request C-141 (C-141-v-Closure)	

QUESTIONS**Site Characterization**

Please answer all the questions in this group (only required when seeking remediation plan approval and beyond). This information must be provided to the appropriate district office no later than 90 days after the release discovery date.

What is the shallowest depth to groundwater beneath the area affected by the release in feet below ground surface (ft bgs)	Between 51 and 75 (ft.)
What method was used to determine the depth to ground water	NM OSE iWaters Database Search
Did this release impact groundwater or surface water	No
What is the minimum distance, between the closest lateral extents of the release and the following surface areas:	
A continuously flowing watercourse or any other significant watercourse	Greater than 5 (mi.)
Any lakebed, sinkhole, or playa lake (measured from the ordinary high-water mark)	Greater than 5 (mi.)
An occupied permanent residence, school, hospital, institution, or church	Greater than 5 (mi.)
A spring or a private domestic fresh water well used by less than five households for domestic or stock watering purposes	Greater than 5 (mi.)
Any other fresh water well or spring	Greater than 5 (mi.)
Incorporated municipal boundaries or a defined municipal fresh water well field	Greater than 5 (mi.)
A wetland	Between 1 and 5 (mi.)
A subsurface mine	Greater than 5 (mi.)
An (non-karst) unstable area	Greater than 5 (mi.)
Categorize the risk of this well / site being in a karst geology	Low
A 100-year floodplain	Greater than 5 (mi.)
Did the release impact areas not on an exploration, development, production, or storage site	No

Remediation Plan

Please answer all the questions that apply or are indicated. This information must be provided to the appropriate district office no later than 90 days after the release discovery date.

Requesting a remediation plan approval with this submission	Yes
Attach a comprehensive report demonstrating the lateral and vertical extents of soil contamination associated with the release have been determined, pursuant to 19.15.29.11 NMAC and 19.15.29.13 NMAC.	
Have the lateral and vertical extents of contamination been fully delineated	Yes
Was this release entirely contained within a lined containment area	Yes
Per Subsection B of 19.15.29.11 NMAC unless the site characterization report includes completed efforts at remediation, the report must include a proposed remediation plan in accordance with 19.15.29.12 NMAC, which includes the anticipated timelines for beginning and completing the remediation.	
On what estimated date will the remediation commence	11/10/2024
On what date will (or did) the final sampling or liner inspection occur	11/13/2024
On what date will (or was) the remediation complete(d)	11/10/2024
What is the estimated surface area (in square feet) that will be remediated	9300
What is the estimated volume (in cubic yards) that will be remediated	0
These estimated dates and measurements are recognized to be the best guess or calculation at the time of submission and may (be) change(d) over time as more remediation efforts are completed.	
The OCD recognizes that proposed remediation measures may have to be minimally adjusted in accordance with the physical realities encountered during remediation. If the responsible party has any need to significantly deviate from the remediation plan proposed, then it should consult with the division to determine if another remediation plan submission is required.	

Sante Fe Main Office
Phone: (505) 476-3441

General Information
Phone: (505) 629-6116

Online Phone Directory
<https://www.emnrd.nm.gov/ocd/contact-us>

State of New Mexico
Energy, Minerals and Natural Resources
Oil Conservation Division
1220 S. St Francis Dr.
Santa Fe, NM 87505

QUESTIONS, Page 4

Action 406730

QUESTIONS (continued)

Operator: CAZA OPERATING, LLC 200 N Loraine St Midland, TX 79701	OGRID: 249099
	Action Number: 406730
	Action Type: [C-141] Remediation Closure Request C-141 (C-141-v-Closure)

QUESTIONS

Remediation Plan (continued)	
<i>Please answer all the questions that apply or are indicated. This information must be provided to the appropriate district office no later than 90 days after the release discovery date.</i>	
This remediation will (or is expected to) utilize the following processes to remediate / reduce contaminants:	
<i>(Select all answers below that apply.)</i>	
Is (or was) there affected material present needing to be removed	Yes
Is (or was) there a power wash of the lined containment area (to be) performed	Yes
OTHER (Non-listed remedial process)	No
<i>Per Subsection B of 19.15.29.11 NMAC unless the site characterization report includes completed efforts at remediation, the report must include a proposed remediation plan in accordance with 19.15.29.12 NMAC, which includes the anticipated timelines for beginning and completing the remediation.</i>	
I hereby certify that the information given above is true and complete to the best of my knowledge and understand that pursuant to OCD rules and regulations all operators are required to report and/or file certain release notifications and perform corrective actions for releases which may endanger public health or the environment. The acceptance of a C-141 report by the OCD does not relieve the operator of liability should their operations have failed to adequately investigate and remediate contamination that pose a threat to groundwater, surface water, human health or the environment. In addition, OCD acceptance of a C-141 report does not relieve the operator of responsibility for compliance with any other federal, state, or local laws and/or regulations.	
I hereby agree and sign off to the above statement	Name: Kelly Arrendondo Title: Production Reporting Manager Email: karredondo@ntglobal.com Date: 11/26/2024
<i>The OCD recognizes that proposed remediation measures may have to be minimally adjusted in accordance with the physical realities encountered during remediation. If the responsible party has any need to significantly deviate from the remediation plan proposed, then it should consult with the division to determine if another remediation plan submission is required.</i>	

Sante Fe Main Office
Phone: (505) 476-3441

General Information
Phone: (505) 629-6116

Online Phone Directory
<https://www.emnrd.nm.gov/ocd/contact-us>

State of New Mexico
Energy, Minerals and Natural Resources
Oil Conservation Division
1220 S. St Francis Dr.
Santa Fe, NM 87505

QUESTIONS, Page 6

Action 406730

QUESTIONS (continued)

Operator: CAZA OPERATING, LLC 200 N Loraine St Midland, TX 79701	OGRID: 249099
	Action Number: 406730
	Action Type: [C-141] Remediation Closure Request C-141 (C-141-v-Closure)

QUESTIONS

Liner Inspection Information	
Last liner inspection notification (C-141L) recorded	401073
Liner inspection date pursuant to Subparagraph (a) of Paragraph (5) of Subsection A of 19.15.29.11 NMAC	11/13/2024
Was all the impacted materials removed from the liner	Yes
What was the liner inspection surface area in square feet	8000

Remediation Closure Request

Only answer the questions in this group if seeking remediation closure for this release because all remediation steps have been completed.

Requesting a remediation closure approval with this submission	Yes
Have the lateral and vertical extents of contamination been fully delineated	Yes
Was this release entirely contained within a lined containment area	Yes
What was the total surface area (in square feet) remediated	9300
What was the total volume (cubic yards) remediated	0
Summarize any additional remediation activities not included by answers (above)	n/a

The responsible party must attach information demonstrating they have complied with all applicable closure requirements and any conditions or directives of the OCD. This demonstration should be in the form of a comprehensive report (in .pdf format) including a scaled site map, sampling diagrams, relevant field notes, photographs of any excavation prior to backfilling, laboratory data including chain of custody documents of final sampling, and a narrative of the remedial activities. Refer to 19.15.29.12 NMAC.

I hereby certify that the information given above is true and complete to the best of my knowledge and understand that pursuant to OCD rules and regulations all operators are required to report and/or file certain release notifications and perform corrective actions for releases which may endanger public health or the environment. The acceptance of a C-141 report by the OCD does not relieve the operator of liability should their operations have failed to adequately investigate and remediate contamination that pose a threat to groundwater, surface water, human health or the environment. In addition, OCD acceptance of a C-141 report does not relieve the operator of responsibility for compliance with any other federal, state, or local laws and/or regulations. The responsible party acknowledges they must substantially restore, reclaim, and re-vegetate the impacted surface area to the conditions that existed prior to the release or their final land use in accordance with 19.15.29.13 NMAC including notification to the OCD when reclamation and re-vegetation are complete.

I hereby agree and sign off to the above statement	Name: Kelly Arrendondo Title: Production Reporting Manager Email: karredondo@ntglobal.com Date: 11/26/2024
--	---

Sante Fe Main Office
Phone: (505) 476-3441

General Information
Phone: (505) 629-6116

Online Phone Directory
<https://www.emnrd.nm.gov/ocd/contact-us>

State of New Mexico
Energy, Minerals and Natural Resources
Oil Conservation Division
1220 S. St Francis Dr.
Santa Fe, NM 87505

CONDITIONS

Action 406730

CONDITIONS

Operator: CAZA OPERATING, LLC 200 N Loraine St Midland, TX 79701	OGRID: 249099
	Action Number: 406730
	Action Type: [C-141] Remediation Closure Request C-141 (C-141-v-Closure)

CONDITIONS

Created By	Condition	Condition Date
nvez	Liner inspection approved, release resolved.	12/9/2024