



SITE INFORMATION

Closure Report
RHODES FEDERAL UNIT #224 (08.16.2013)
Incident ID: NSAD1326255401
Lea County, New Mexico
Unit I Sec 22 T26S R37E
32.0260162°, -103.1443939°

Point of Release:

During reclamation and removing tanks, a valve was left open, and oil was released on the pad area.

Release Date: 08.16.2013
Volume Released: 28 Barrels of Crude Oil
Volume Recovered: 12 Barrels of Crude Oil

CARMONA RESOURCES



Prepared for:
Cimarex Energy Co. of Colorado
6001 Deauville Blvd
Suite 300N
Midland, Texas 79706

Prepared by:
Carmona Resources, LLC
310 West Wall Street
Suite 500
Midland, Texas 79701



TABLE OF CONTENTS

1.0 SITE INFORMATION AND BACKGROUND

2.0 SITE CHARACTERIZATION AND GROUNDWATER

3.0 NMAC REGULATORY CRITERIA

4.0 SITE ASSESSMENT ACTIVITIES

5.0 CONCLUSION

FIGURES

FIGURE 1 OVERVIEW FIGURE 2 TOPOGRAPHIC

FIGURE 3A/B SAMPLE LOCATION (HISTORIC/CURRENT VIEW)

APPENDICES

APPENDIX A TABLES

APPENDIX B PHOTOS

APPENDIX C NMOCD CORRESPONDENCE

APPENDIX D SITE CHARACTERIZATION AND GROUNDWATER

APPENDIX E LABORATORY REPORTS

November 27, 2024

New Mexico Oil Conservation Division
1220 South St, Francis Drive
Santa Fe, New Mexico 87505

Re: Closure Report
RHODES FEDERAL UNIT #224 (08.16.2013)
Cimarex Energy Co. of Colorado
Site Location: Unit I, S22 T26S, R37E
(Lat 32.0260162°, Long -103.1443939°)
Lea County, New Mexico

To whom it may concern:

On behalf of Cimarex Energy Co. of Colorado (Cimarex), Carmona Resources, LLC has prepared this letter to document site activities for the Rhodes Federal Unit #224 (08.16.2016). The site is located at 32.0260162°, -103.1443939° within Unit I, S22, T26S, R37E, in Lea County, New Mexico (Figures 1 and 2).

1.0 Site Information and Background

Based on the initial C-141 obtained from the New Mexico Oil Conservation Division (NMOCD), the spill was discovered on August 16, 2013, caused by a valve being left open during reclamation and tank removal activities. It resulted in approximately twenty-eight (28) barrels of crude oil being released, and twelve (12) barrels of crude oil were recovered. The initial C-141 form is attached in Appendix C.

2.0 Site Characterization and Groundwater

The site is located within a low karst area. Based on a review of the New Mexico Office of State Engineers and USGS databases, one known water source is within a 0.50-mile radius of the location. The nearest water well is located approximately 0.43 miles Southwest of the site in S27, T26S, R37E and was drilled in 1976. The well has a reported depth to groundwater of 212.57' feet below ground surface (ft bgs).

3.0 NMAC Regulatory Criteria

Per the NMOCD regulatory criteria established in 19.15.29.12 NMAC, the following criteria were utilized in assessing the site.

- Benzene: 10 milligrams per kilogram (mg/kg).
- Benzene, toluene, ethylbenzene, and total xylenes (BTEX): 50 mg/kg.
- TPH: 100 mg/kg (GRO + DRO + MRO).
- Chloride: 600 mg/kg.

4.0 Site Assessment Activities

On September 25, 2024, Carmona Resources performed site assessment activities to evaluate soil impacts. To assess the vertical and horizontal extent, two (2) sample points (S-1 and S-2) and four (4) horizontal sample points (H-1 through H-4) were advanced to depths ranging from the surface to 3' bgs inside and surrounding the area of concern. Before collecting composite confirmation samples, the NMOCD division office was notified via web portal on September 23, 2024, per Subsection D of 19.15.29.12 NMAC. See Appendix C. For chemical analysis, the soil samples were collected and placed directly into laboratory-provided sample containers, stored on ice, and transported under the proper chain-of-custody protocol to

310 West Wall Street, Suite 500
Midland TX, 79701
432.813.1992



Eurofins Lab in Midland, Texas. The samples were analyzed for total petroleum hydrocarbons (TPH) by EPA method 8015, modified benzene, toluene, ethylbenzene, and xylenes (BTEX) by EPA Method 8021B, and chloride by EPA method 300.0. The laboratory reports, including analytical methods, results, and chain-of-custody documents, are attached in Appendix E. Refer to Table 1. See Figure 3A/B for the sample locations.

On November 19, 2024, Carmona Resources personnel revisited the site to conduct a vegetation survey of the reclaimed well pad. Regrowth over the entire area was found to be evident and was documented via aerial photography from a drone. Native grasses have taken over, with approximately 80% vegetation cover over the entire location. Refer to Appendix B for documentation.

5.0 Conclusion

Based on the assessment results and the analytical data, no further actions are required at the site. Cimarex formally requests the closure of this release as well as approval of reclamation and revegetation of this site. If you have any questions regarding this report or need additional information, please get in touch with us at 432-813-1992.

Sincerely,

Carmona Resources, LLC

Gilbert Priego Jr.
Project Manager

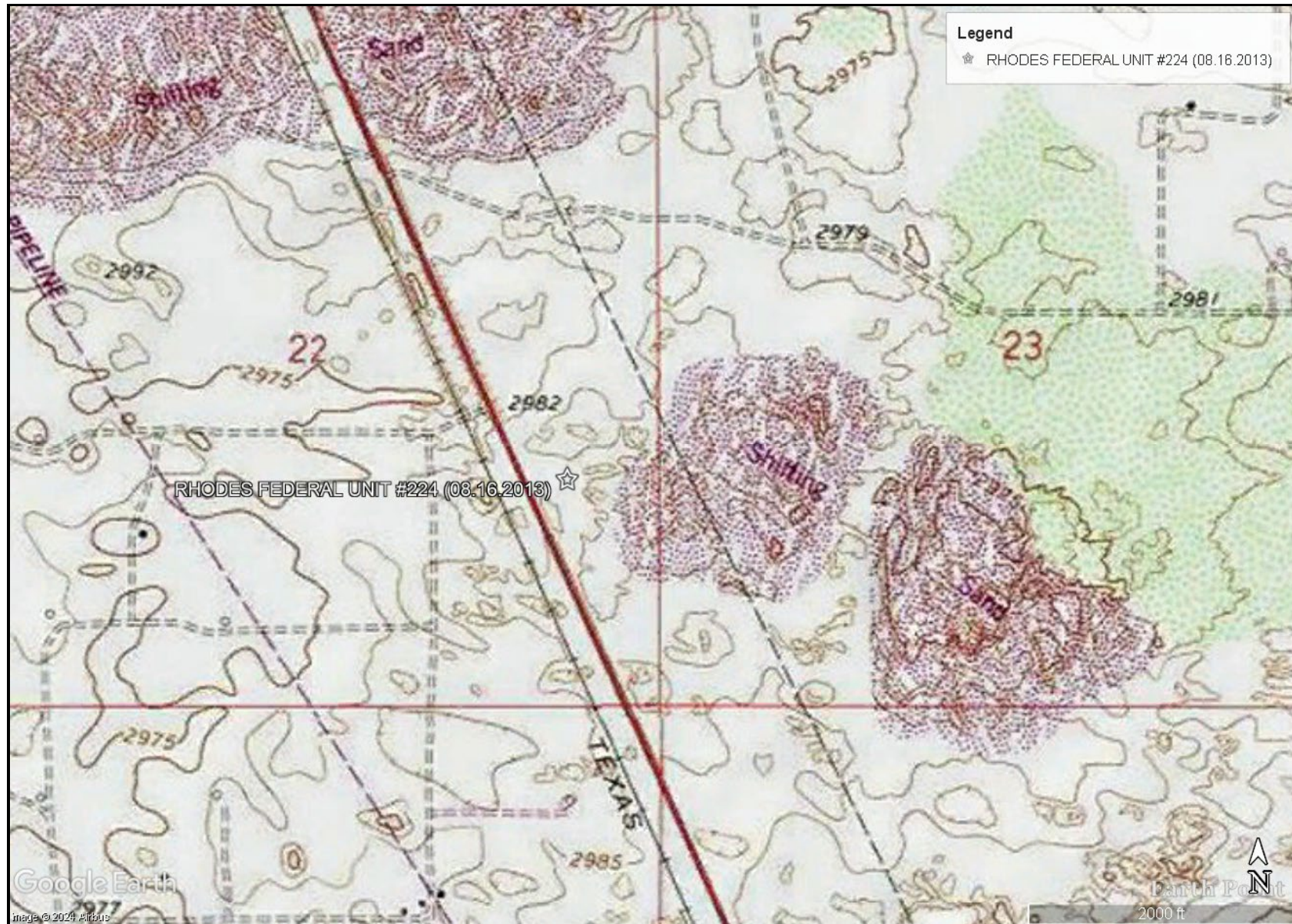
Ashton Thielke
Sr. Project Manager

FIGURES

CARMONA RESOURCES



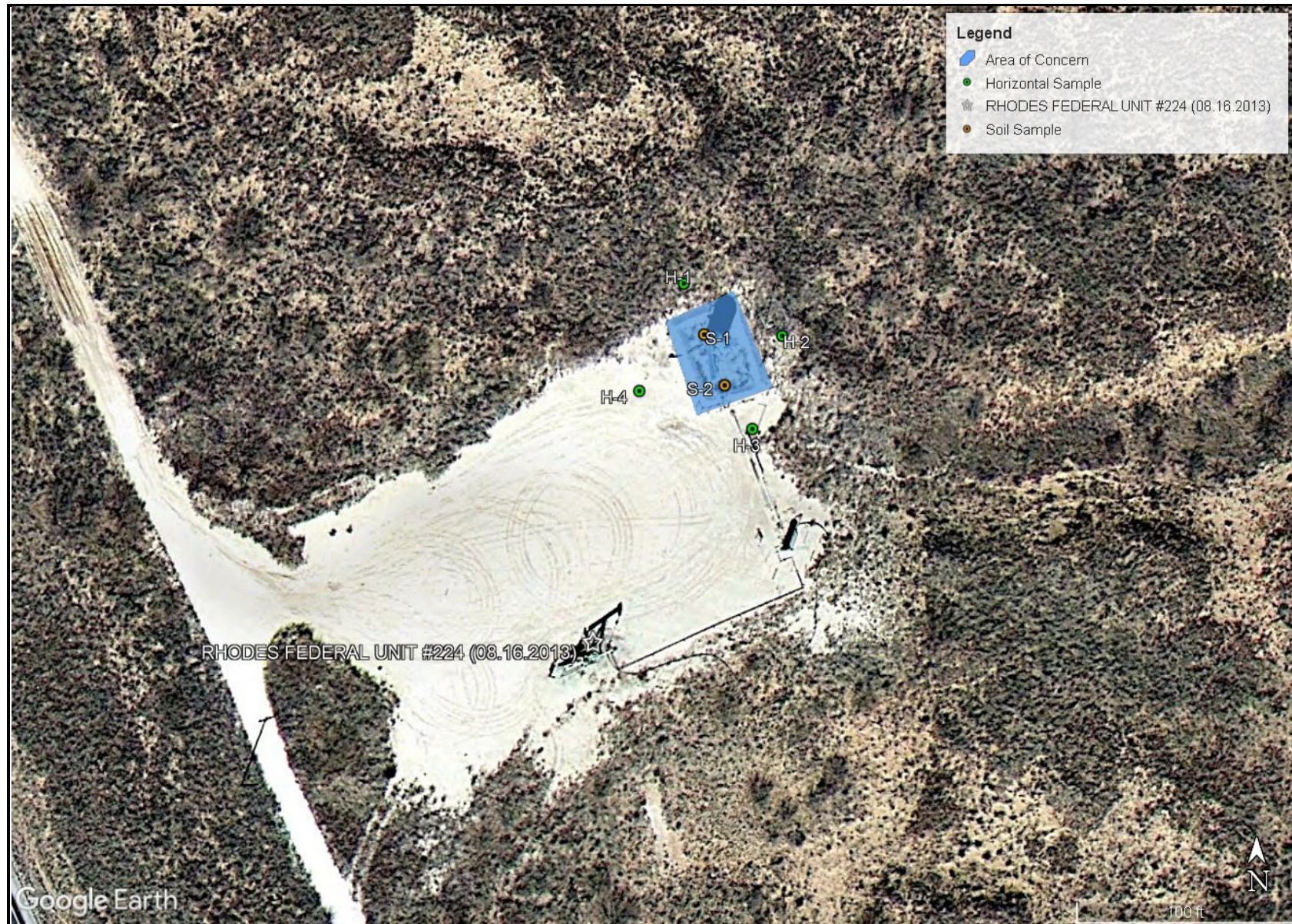




TOPOGRAPHIC MAP
CIMAREX ENERGY CO. OF COLORADO
RHODES FEDERAL UNIT #224 (08.16.2013)
LEA COUNTY, NEW MEXICO
32.0260162°, -103.1443939°



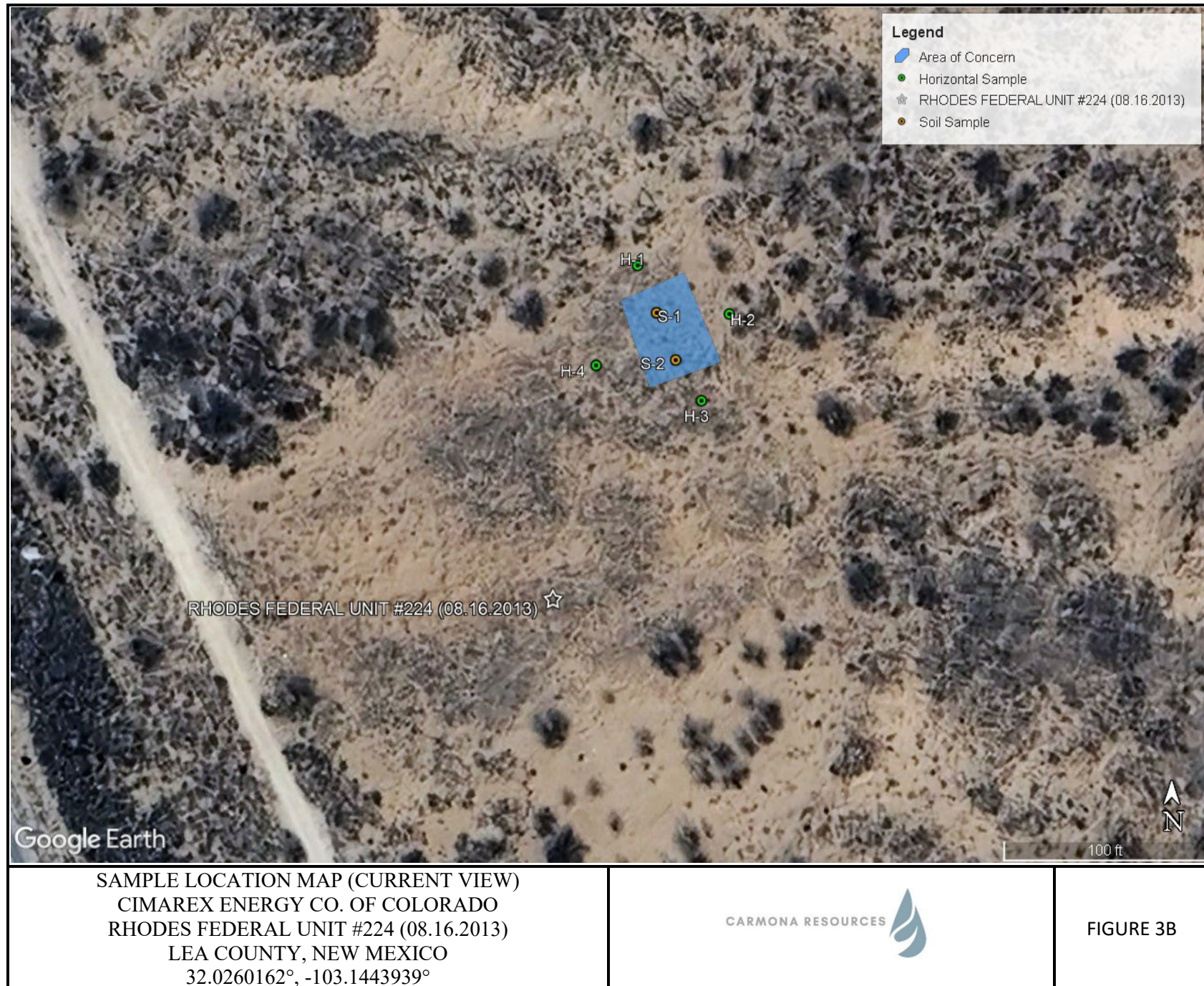
FIGURE 2



SAMPLE LOCATION MAP (HISTORIC VIEW)
CIMAREX ENERGY CO. OF COLORADO
RHODES FEDERAL UNIT #224 (08.16.2013)
LEA COUNTY, NEW MEXICO
32.0260162°, -103.1443939°



FIGURE 3A



APPENDIX A

CARMONA RESOURCES



Table 1
Cimarex Energy Co. of Colorado
RHODES FEDERAL UNIT #224 (08.16.2013)
Lea County, New Mexico

Sample ID	Date	Depth (in-ft)	TPH (mg/kg)				Benzene (mg/kg)	Toluene (mg/kg)	Ethylbenzene (mg/kg)	Xylene (mg/kg)	Total BTEX (mg/kg)	Chloride (mg/kg)
			GRO	DRO	MRO	Total						
S-1	9/25/2024	0-1.0'	<49.7	<49.7	<49.7	<49.7	<0.00199	<0.00199	<0.00199	<0.00398	<0.00398	<5.03
	"	1.5'	<50.0	<50.0	<50.0	<50.0	<0.00200	<0.00200	<0.00200	<0.00400	<0.00400	<5.05
	"	2.0'	<49.9	<49.9	<49.9	<49.9	<0.00200	<0.00200	<0.00200	<0.00399	<0.00399	<4.98
	"	3.0'	<49.8	<49.8	<49.8	<49.8	<0.00201	<0.00201	<0.00201	<0.00402	<0.00402	5.76
S-2	9/25/2024	0-1.0'	<49.7	<49.7	<49.7	<49.7	<0.00199	<0.00199	<0.00199	<0.00398	<0.00398	<5.05
	"	1.5'	<50.0	<50.0	<50.0	<50.0	<0.00201	<0.00201	<0.00201	<0.00402	<0.00402	<4.97
	"	2.0'	<50.0	<50.0	<50.0	<50.0	<0.00202	<0.00202	<0.00202	<0.00404	<0.00404	<4.98
	"	3.0'	<49.9	<49.9	<49.9	<49.9	<0.00199	<0.00199	<0.00199	<0.00398	<0.00398	<4.96
H-1	9/25/2024	0-1.0'	<49.8	<49.8	<49.8	<49.8	<0.00201	<0.00201	<0.00201	<0.00402	<0.00402	5.31
H-2	9/25/2024	0-1.0'	<49.7	53.1	<49.7	53.1	<0.00200	<0.00200	<0.00200	<0.00399	<0.00399	<5.03
H-3	9/25/2024	0-1.0'	<50.0	<50.0	<50.0	<50.0	<0.00199	<0.00199	<0.00199	<0.00398	<0.00398	<5.03
H-4	9/25/2024	0-1.0'	<49.9	<49.9	<49.9	<49.9	<0.00201	<0.00201	<0.00201	<0.00402	<0.00402	<5.03
Regulatory Criteria^A							100 mg/kg	10 mg/kg			50 mg/kg	600 mg/kg

(-) Not Analyzed

^A – Table 1 - 19.15.29 NMAC

mg/kg - milligram per kilogram

TPH - Total Petroleum Hydrocarbons

ft - feet

(S) - Soil Sample

(H) - Horizontal Sample

APPENDIX B

CARMONA RESOURCES



PHOTOGRAPHIC LOG

Cimarex Energy Co. of Colorado

Photograph No. 1

Facility: RHODES FEDERAL UNIT #224
(08.16.2013)

County: Lea County, New Mexico

Description:

View Southeast, area of the well sign.



Photograph No. 2

Facility: RHODES FEDERAL UNIT #224
(08.16.2013)

County: Lea County, New Mexico

Description:

View North, area of the reclaimed well pad during the initial site assessment.



Photograph No. 3

Facility: RHODES FEDERAL UNIT #224
(08.16.2013)

County: Lea County, New Mexico

Description:

View East, area of the reclaimed well pad during the initial site assessment.



PHOTOGRAPHIC LOG

Cimarex Energy Co. of Colorado

Photograph No. 4

Facility: RHODES FEDERAL UNIT #224
(08.16.2013)

County: Lea County, New Mexico

Description:

View South, area of the reclaimed well pad during the initial site assessment.

**Photograph No. 5**

Facility: RHODES FEDERAL UNIT #224
(08.16.2013)

County: Lea County, New Mexico

Description:

Aerial view of reclaimed well pad during revegetation survey.

**Photograph No. 6**

Facility: RHODES FEDERAL UNIT #224
(08.16.2013)

County: Lea County, New Mexico

Description:

Aerial view of reclaimed well pad during revegetation survey.



PHOTOGRAPHIC LOG

Cimarex Energy Co. of Colorado

Photograph No. 7

Facility: RHODES FEDERAL UNIT #224
(08.16.2013)

County: Lea County, New Mexico

Description:

View North, area of the reclaimed well pad during the revegetation survey.



Photograph No. 8

Facility: RHODES FEDERAL UNIT #224
(08.16.2013)

County: Lea County, New Mexico

Description:

View Northeast, area of the reclaimed well pad during the revegetation survey.



Photograph No. 9

Facility: RHODES FEDERAL UNIT #224
(08.16.2013)

County: Lea County, New Mexico

Description:

View North, area of the reclaimed well pad during the revegetation survey.



APPENDIX C

CARMONA RESOURCES



District I
1625 N. French Dr., Hobbs, NM 88240
District II
811 S. First St., Artesia, NM 88210
District III
1000 Rio Brazos Road, Aztec, NM 87410
District IV
1220 S. St. Francis Dr., Santa Fe, NM 87505

HOBBS OCD

State of New Mexico

Energy Minerals and Natural Resources

AUG 19 2013

Oil Conservation Division

1220 South St. Francis Dr.

Santa Fe, NM 87505

Form C-141

Revised August 8, 2011

Submit 1 Copy to appropriate District Office in
accordance with 19.15.29 NMAC.

RECEIVED

Release Notification and Corrective Action

OPERATOR

x Initial Report

☐ Final Report

Name of Company: Cimarex Energy Company	Contact: Johnny Titsworth
Address: 600 N. Marienfield, Suite 600, Midland, TX 79701	Telephone No. (432)250-2059
Facility Name: Rhodes Federal Unit 224	Facility Type: Tank Battery
Surface Owner: Federal	Mineral Owner:
API No. 30-025-32967	

LOCATION OF RELEASE

Unit Letter I	Section 22	Township 26S	Range 37E	Feet from the 1650	North/South Line FSL	Feet from the 660	East/West Line FEL	County Lea
------------------	---------------	-----------------	--------------	-----------------------	-------------------------	----------------------	-----------------------	---------------

Latitude 32.02601 Longitude -103.14440

NATURE OF RELEASE

Type of Release: Crude Oil	Volume of Release: 28	Volume Recovered: 12
Source of Release: Valves on tank	Date & Hour of Occurrence: 8/16/13 9:00 am	Date & Hour of Discovery: 8/16/13 9:00 am
Was Immediate Notice Given? x Yes <input type="checkbox"/> No <input type="checkbox"/> Not Required	If YES, To Whom? Mark Martino	
By Whom? Kyle Blevins	Date and Hour: 8/16/13 9:00 am	
Was a Watercourse Reached? <input type="checkbox"/> Yes x No	If YES, Volume Impacting the Watercourse.	

If a Watercourse was Impacted, Describe Fully.*

Jeffrey Lekins
Environmental Specialist

9/18/13

GW @ 145'

Describe Cause of Problem and Remedial Action Taken.*

Location is in the process of being reclaimed. While removing tanks, a valve was left open and oil was released on the pad area.

Describe Area Affected and Cleanup Action Taken.*

Spill stayed on location, area was approximately 10' x 12'. Area will be remediated and then reclaimed to BLM standards.

I hereby certify that the information given above is true and complete to the best of my knowledge and understand that pursuant to NMOCD rules and regulations all operators are required to report and/or file certain release notifications and perform corrective actions for releases which may endanger public health or the environment. The acceptance of a C-141 report by the NMOCD marked as "Final Report" does not relieve the operator of liability should their operations have failed to adequately investigate and remediate contamination that pose a threat to ground water, surface water, human health or the environment. In addition, NMOCD acceptance of a C-141 report does not relieve the operator of responsibility for compliance with any other federal, state, or local laws and/or regulations.

Signature: <i>Johnny Titsworth</i>	OIL CONSERVATION DIVISION	
Printed Name: Johnny Titsworth	Approved by Environmental Specialist: <i>Jeffrey Lekins</i> Environmental Specialist	
Title: Environmental Compliance Coordinator	Approval Date: 9/18/13	Expiration Date: 10/16/13
E-mail Address: jtitsworth@cimarex.com	Conditions of Approval: DELINEATE & REMEDIATE PER NMOCD GUIDELINES	
Date:	Phone: (432)-250-2059	Attached <input type="checkbox"/> SUBMIT FINAL C-141 BY 10/16/13 IRP-9-13-2959 ✓

* Attach Additional Sheets If Necessary

8/19

SEP 23 2013

District I
1625 N. French Dr., Hobbs, NM 88240
Phone:(575) 393-6161 Fax:(575) 393-0720
District II
811 S. First St., Artesia, NM 88210
Phone:(575) 748-1283 Fax:(575) 748-9720
District III
1000 Rio Brazos Rd., Aztec, NM 87410
Phone:(505) 334-6178 Fax:(505) 334-6170
District IV
1220 S. St Francis Dr., Santa Fe, NM 87505
Phone:(505) 476-3470 Fax:(505) 476-3462

State of New Mexico
Energy, Minerals and Natural Resources
Oil Conservation Division
1220 S. St Francis Dr.
Santa Fe, NM 87505

QUESTIONS

Action 385841

QUESTIONS

Operator: CIMAREX ENERGY CO. OF COLORADO 6001 Deauville Blvd Midland, TX 79706	OGRID: 162683
	Action Number: 385841
	Action Type: [NOTIFY] Notification Of Sampling (C-141N)

QUESTIONS

Prerequisites	
Incident ID (n#)	nSAD1326255401
Incident Name	NSAD1326255401 2013 MAJOR A OS @ 30-025-32967
Incident Type	Oil Release
Incident Status	Initial C-141 Approved
Incident Well	[30-025-32967] RHODES FEDERAL UNIT #224

Location of Release Source	
Site Name	Unavailable.
Date Release Discovered	08/16/2013
Surface Owner	Private

Sampling Event General Information	
Please answer all the questions in this group.	
What is the sampling surface area in square feet	1,700
What is the estimated number of samples that will be gathered	6
Sampling date pursuant to Subparagraph (a) of Paragraph (1) of Subsection D of 19.15.29.12 NMAC	09/25/2024
Time sampling will commence	08:00 AM
Please provide any information necessary for observers to contact samplers	Carmona Resources - 432-813-8988
Please provide any information necessary for navigation to sampling site	32.0260162,-103.1443939 To assess the historic 2013 release during P/A activities and make sure that all contamination was remediated.

District I
1625 N. French Dr., Hobbs, NM 88240
Phone:(575) 393-6161 Fax:(575) 393-0720

District II
811 S. First St., Artesia, NM 88210
Phone:(575) 748-1283 Fax:(575) 748-9720

District III
1000 Rio Brazos Rd., Aztec, NM 87410
Phone:(505) 334-6178 Fax:(505) 334-6170

District IV
1220 S. St Francis Dr., Santa Fe, NM 87505
Phone:(505) 476-3470 Fax:(505) 476-3462

State of New Mexico

Energy, Minerals and Natural Resources

Oil Conservation Division

1220 S. St Francis Dr.

Santa Fe, NM 87505

CONDITIONS

Action 385841

CONDITIONS

Operator: CIMAREX ENERGY CO. OF COLORADO 6001 Deauville Blvd Midland, TX 79706	OGRID: 162683
	Action Number: 385841
	Action Type: [NOTIFY] Notification Of Sampling (C-141N)

CONDITIONS

Created By	Condition	Condition Date
lluig	Failure to notify the OCD of sampling events including any changes in date/time per the requirements of 19.15.29.12.D.(1).(a) NMAC, may result in the remediation closure samples not being accepted.	9/23/2024

APPENDIX D

CARMONA RESOURCES



Nearest water well

Cimarex Energy

Legend

- 0.43 Miles
- 0.50 Mile Radius
- 0.62 Miles
- 1.07 Miles
- RHODES FEDERAL UNIT #224 (08.16.2013)
- USGS Water Well

92.46' - Drilled 2001

RHODES FEDERAL UNIT #224 (08.16.2013)

212.57' - Drilled 1976

70.77' - Drilled 2016



Low Karst

Cimarex Energy

Legend

- Low
- RHODES FEDERAL UNIT #224 (08.16.2013)

RHODES FEDERAL UNIT #224 (08.16.2013)





New Mexico Office of the State Engineer

Water Column/Average Depth to Water

(A CLW##### in the POD suffix indicates the POD has been replaced & no longer serves a water right file.)

(R=POD has been replaced, O=orphaned, C=the file is closed)

(quarters are smallest to largest)

(meters)

(In feet)

POD Number	Code	Sub basin	County	Q64	Q16	Q4	Sec	Tws	Range	X	Y	Map	Distance	Well Depth	Depth Water	Water Column
L 14747 POD1		L	LE	NW	SW	SE	33	18S	38E	674410.9	3543680.8		1409	80	66	14
CP 00574 POD1		CP	LE	NW	NW	SE	14	26S	37E	676319.0	3546651.0 *		2124	4600	4394	206
CP 00452 POD4		CP	LE	SE	SE	SW	09	26S	37E	672876.0	3547597.0 *		3640	503	300	203
CP 00625		CP	LE	NW	SE	NW	19	26S	38E	679155.0	3545491.0 *		3976	128		

Average Depth to Water: 1586 feet

Minimum Depth: 66 feet

Maximum Depth: 4394 feet

Record Count: 4

UTM Filters (in meters):

Easting: 675235.00

Northing: 3544824.00

Radius: 4000

* UTM location was derived from PLSS - see Help

The data is furnished by the NMOSE/ISC and is accepted by the recipient with the expressed understanding that the OSE/ISC make no warranties, expressed or implied, concerning the accuracy, completeness, reliability, usability, or suitability for any particular purpose of the data.



USGS Home
Contact USGS
Search USGS

National Water Information System: Web Interface

USGS Water Resources

Data Category:
Groundwater

Geographic Area:
New Mexico

GO

Click to hideNews Bulletins

- Explore the *NEW* [USGS National Water Dashboard](#) interactive map to access real-time water data from over 13,500 stations nationwide.

Groundwater levels for New Mexico

Click to hide state-specific text

i Important: [Next Generation Monitoring Location Page](#)

Search Results -- 1 sites found

Agency code = usgs
site_no list =

- 320113103085001

Minimum number of levels = 1
[Save file of selected sites](#) to local disk for future upload

USGS 320113103085001 26S.37E.27.21434

Lea County, New Mexico
Latitude 32°01'13", Longitude 103°08'50" NAD27
Land-surface elevation 2,981 feet above NAVD88
The depth of the well is 525 feet below land surface.
This well is completed in the Pecos River Basin alluvial aquifer (N100PCSRVR) national aquifer.
This well is completed in the Santa Rosa Sandstone (231SNRS) local aquifer.

Output formats

Table of data

Tab-separated data

Graph of data

Reselect period

Date	Time	? Water-level date-time accuracy	? Parameter code	Water level, feet below land surface	Water level, feet above specific vertical datum	Referenced vertical datum	? Status	? Method of measurement	? Measuring agency	? Source of measurement	? Water-level approval status
1976-01-29			D 62610		2767.11	NGVD29	1	Z			A
1976-01-29			D 62611		2768.43	NAVD88	1	Z			A
1976-01-29			D 72019	212.57			1	Z			A

Explanation

Section	Code	Description
Water-level date-time accuracy	D	Date is accurate to the Day
Parameter code	62610	Groundwater level above NGVD 1929, feet
Parameter code	62611	Groundwater level above NAVD 1988, feet
Parameter code	72019	Depth to water level, feet below land surface
Referenced vertical datum	NAVD88	North American Vertical Datum of 1988
Referenced vertical datum	NGVD29	National Geodetic Vertical Datum of 1929
Status	1	Static
Method of measurement	Z	Other.
Measuring agency		Not determined
Source of measurement		Not determined
Water-level approval status	A	Approved for publication -- Processing and review completed.

[Questions or Comments](#)
[Help](#)
[Data Tips](#)
[Explanation of terms](#)
[Subscribe for system changes](#)

[Accessibility](#) [FOIA](#) [Privacy](#) [Policies and Notices](#)

[U.S. Department of the Interior](#) | [U.S. Geological Survey](#)

Title: Groundwater for New Mexico: Water Levels

URL: <https://nwis.waterdata.usgs.gov/nm/nwis/gwlevels?>



Page Contact Information: [New Mexico Water Data Maintainer](#)

Page Last Modified: 2024-10-01 15:37:49 EDT

0.43 0.32 nadww01

Date

Time

?
Water-level date-time accuracy

?
Parameter code

Water level, feet below land surface

Water level, feet above specific vertical datum

Referenced vertical datum

?
Status

?
Method of measurement

Groundwater

New Mexico

GO

Click to hideNews Bulletins

- Explore the [NEW USGS National Water Dashboard](#) interactive map to access real-time water data from over 13,500 stations nationwide.

Groundwater levels for New Mexico

Click to hide state-specific text

i Important: [Next Generation Monitoring Location Page](#)

Search Results -- 1 sites found

Agency code = usgs
site_no list =

- 320046103085101

Minimum number of levels = 1
[Save file of selected sites](#) to local disk for future upload

USGS 320046103085101 26S.37E.27.23212

Lea County, New Mexico
Latitude 32°01'03.0", Longitude 103°08'52.7" NAD83
Land-surface elevation 2,980.00 feet above NGVD29
This well is completed in the Other aquifers (N9999OTHER) national aquifer.
This well is completed in the Santa Rosa Sandstone (231SNRS) local aquifer.

Output formats

Table of data
Tab-separated data
Graph of data
Reselect period

Date	Time	? Water-level date-time accuracy	? Parameter code	Water level, feet below land surface	Water level, feet above specific vertical datum	Referenced vertical datum	? Status	? Method of measurement	? Measuring agency	? Source of measurement	? Water-level approval status
1976-01-29			D 62610		2765.60	NGVD29	1	Z			A
1976-01-29			D 62611		2766.92	NAVD88	1	Z			A
1976-01-29			D 72019	214.40			1	Z			A
1981-03-17			D 62610		2775.93	NGVD29	1	Z			A
1981-03-17			D 62611		2777.25	NAVD88	1	Z			A
1981-03-17			D 72019	204.07			1	Z			A
1986-03-06			D 62610		2786.42	NGVD29	1	Z			A
1986-03-06			D 62611		2787.74	NAVD88	1	Z			A
1986-03-06			D 72019	193.58			1	Z			A
1990-11-14			D 62610		2791.93	NGVD29	1	Z			A
1990-11-14			D 62611		2793.25	NAVD88	1	Z			A
1990-11-14			D 72019	188.07			1	Z			A
1996-02-28			D 62610		2799.59	NGVD29	1	S			A
1996-02-28			D 62611		2800.91	NAVD88	1	S			A
1996-02-28			D 72019	180.41			1	S			A
2001-03-06			D 62610		2843.00	NGVD29	1	S			A
2001-03-06			D 62611		2844.32	NAVD88	1	S			A
2001-03-06			D 72019	137.00			1	S			A
2006-02-08	17:00 UTC		m 62610		2862.70	NGVD29	1	S	USGS	S	A
2006-02-08	17:00 UTC		m 62611		2864.02	NAVD88	1	S	USGS	S	A
2006-02-08	17:00 UTC		m 72019	117.30			1	S	USGS	S	A
2011-01-13	17:35 UTC		m 62610		2909.53	NGVD29	1	S	USGS	S	A
2011-01-13	17:35 UTC		m 62611		2910.85	NAVD88	1	S	USGS	S	A
2011-01-13	17:35 UTC		m 72019	70.47			1	S	USGS	S	A
2016-01-05	21:12 UTC		m 62610		2909.23	NGVD29	1	V	USGS	S	A
2016-01-05	21:12 UTC		m 62611		2910.55	NAVD88	1	V	USGS	S	A

Date	Time	? Water-level date-time accuracy	? Parameter code	Water level, feet below land surface	Water level, feet above specific vertical datum	Referenced vertical datum	? Status	? Metho measu	
2016-01-05	21:12 UTC	m	72019	70.77	1	V	USGS	S	A

Explanation

Section	Code	Description
Water-level date-time accuracy	D	Date is accurate to the Day
Water-level date-time accuracy	m	Date is accurate to the Minute
Parameter code	62610	Groundwater level above NGVD 1929, feet
Parameter code	62611	Groundwater level above NAVD 1988, feet
Parameter code	72019	Depth to water level, feet below land surface
Referenced vertical datum	NAVD88	North American Vertical Datum of 1988
Referenced vertical datum	NGVD29	National Geodetic Vertical Datum of 1929
Status	1	Static
Method of measurement	S	Steel-tape measurement.
Method of measurement	V	Calibrated electric-tape measurement.
Method of measurement	Z	Other.
Measuring agency		Not determined
Measuring agency	USGS	U.S. Geological Survey
Source of measurement		Not determined
Source of measurement	S	Measured by personnel of reporting agency.
Water-level approval status	A	Approved for publication -- Processing and review completed.

[Questions or Comments](#)
[Help](#)
[Data Tips](#)
[Explanation of terms](#)
[Subscribe for system changes](#)

[Accessibility](#) [FOIA](#) [Privacy](#) [Policies and Notices](#)
[U.S. Department of the Interior](#) | [U.S. Geological Survey](#)
Title: Groundwater for New Mexico: Water Levels
URL: <https://nwis.waterdata.usgs.gov/nm/nwis/gwlevels?>



Page Contact Information: [New Mexico Water Data Maintainer](#)
Page Last Modified: 2024-10-01 15:39:41 EDT
0.36 0.26 nadww01

Date

Time

?

Water-level date-time accuracy

?

Parameter code

Water level, feet below land surface

Water level, feet above specific vertical datum

Referenced vertical datum

?

Status

?

Method of measurement

Measuring agency

Source of measurement

?

Water-level approval status

Groundwater

New Mexico

GO

Click to hideNews Bulletins

- Explore the *NEW* [USGS National Water Dashboard](#) interactive map to access real-time water data from over 13,500 stations nationwide.

Groundwater levels for New Mexico

Click to hide state-specific text

i Important: [Next Generation Monitoring Location Page](#)

Search Results -- 1 sites found

Agency code = usgs
site_no list =

- 320204103093501

Minimum number of levels = 1
[Save file of selected sites](#) to local disk for future upload

USGS 320204103093501 26S.37E.16.44211

Lea County, New Mexico
Latitude 32°02'04", Longitude 103°09'35" NAD27
Land-surface elevation 2,986 feet above NAVD88
This well is completed in the Pecos River Basin alluvial aquifer (N100PCSRVR) national aquifer.
This well is completed in the Alluvium, Bolson Deposits and Other Surface Deposits (110AVMB) local aquifer.

Output formats

Table of data

Tab-separated data

Graph of data

Reselect period

Date	Time	<div>?</div> <div>Water-level date-time accuracy</div>	<div>?</div> <div>Parameter code</div>	Water level, feet below land surface	Water level, feet above specific vertical datum	Referenced vertical datum	<div>?</div> <div>Status</div>	<div>?</div> <div>Method of measurement</div>	<div>?</div> <div>Measuring agency</div>	<div>?</div> <div>Source of measurement</div>	<div>?</div> <div>Water-level approval status</div>
1970-12-01			D62610		2887.87	NGVD29	1	Z			A
1970-12-01			D62611		2889.20	NAVD88	1	Z			A
1970-12-01			D72019	96.80			1	Z			A
1976-01-08			D62610		2888.79	NGVD29	1	Z			A
1976-01-08			D62611		2890.12	NAVD88	1	Z			A
1976-01-08			D72019	95.88			1	Z			A
1981-03-13			D62610		2890.14	NGVD29	1	Z			A
1981-03-13			D62611		2891.47	NAVD88	1	Z			A
1981-03-13			D72019	94.53			1	Z			A
1986-03-06			D62610		2890.81	NGVD29	1	Z			A
1986-03-06			D62611		2892.14	NAVD88	1	Z			A
1986-03-06			D72019	93.86			1	Z			A
1990-11-14			D62610		2886.70	NGVD29	1	Z			A
1990-11-14			D62611		2888.03	NAVD88	1	Z			A
1990-11-14			D72019	97.97			1	Z			A
1996-02-28			D62610		2892.21	NGVD29	1	S			A
1996-02-28			D62611		2893.54	NAVD88	1	S			A
1996-02-28			D72019	92.46			1	S			A
2001-03-06			D62610		2892.21	NGVD29	1	S			A
2001-03-06			D62611		2893.54	NAVD88	1	S			A
2001-03-06			D72019	92.46			1	S			A

Explanation

Section	Code	Description
---------	------	-------------

Date	Time	? Water-level date-time accuracy	? Parameter code	Water level, feet below land surface	Water level, feet above specific vertical datum	Referenced vertical datum	? Status	? Metho measi
Referenced vertical datum			NAVD88	North American Vertical Datum of 1988				
Referenced vertical datum			NGVD29	National Geodetic Vertical Datum of 1929				
Status			1	Static				
Method of measurement			S	Steel-tape measurement.				
Method of measurement			Z	Other.				
Measuring agency				Not determined				
Source of measurement				Not determined				
Water-level approval status			A	Approved for publication -- Processing and review completed.				

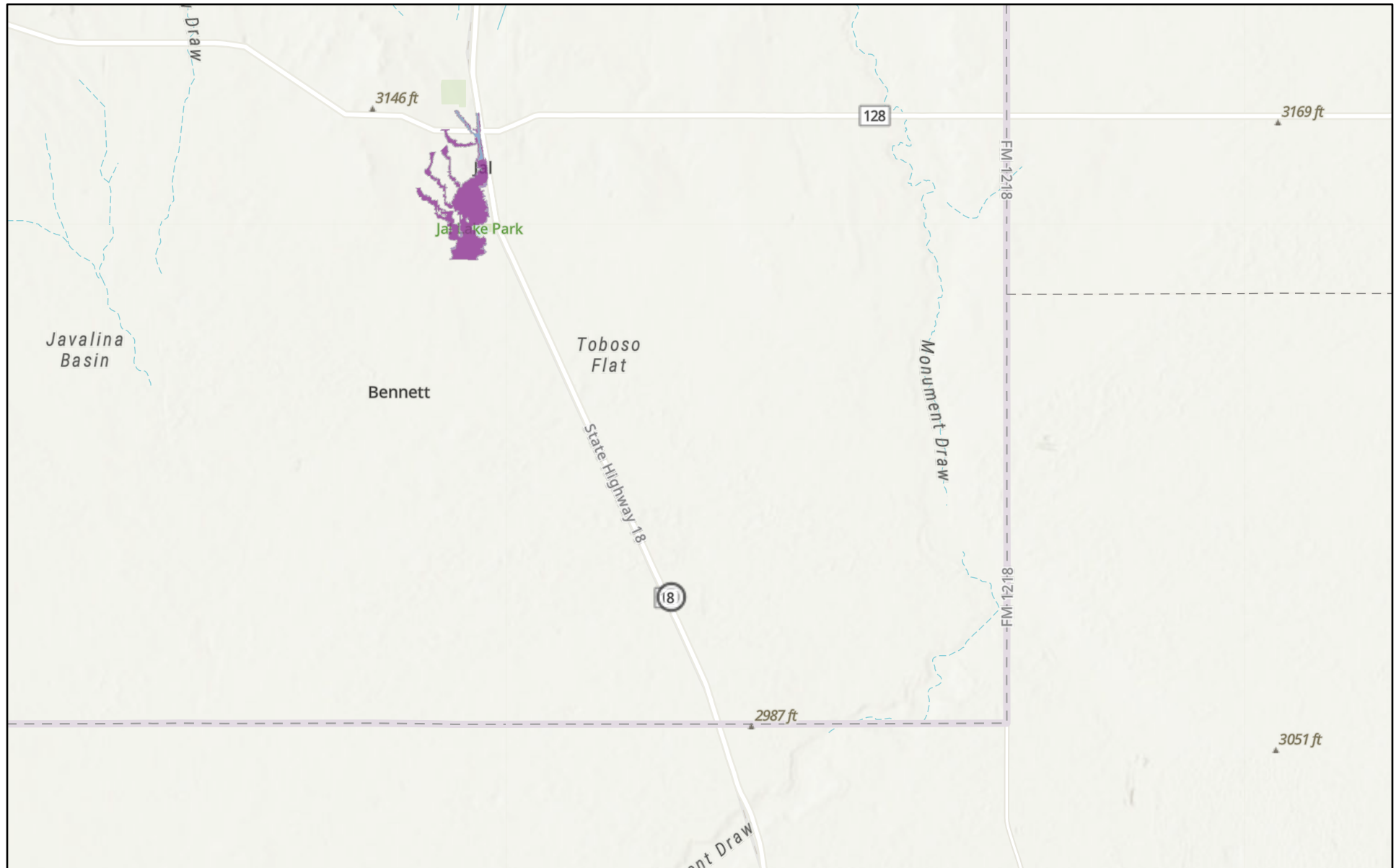
[Questions or Comments](#)
[Help](#)
[Data Tips](#)
[Explanation of terms](#)
[Subscribe for system changes](#)

[Accessibility](#) [FOIA](#) [Privacy](#) [Policies and Notices](#)
[U.S. Department of the Interior](#) | [U.S. Geological Survey](#)
Title: Groundwater for New Mexico: Water Levels
URL: <https://nwis.waterdata.usgs.gov/nm/nwis/gwlevels?>



Page Contact Information: [New Mexico Water Data Maintainer](#)
Page Last Modified: 2024-10-01 15:41:32 EDT
0.32 0.24 nadww01

RHODES FEDERAL UNIT #224 (08.16.2013)




10/1/2024

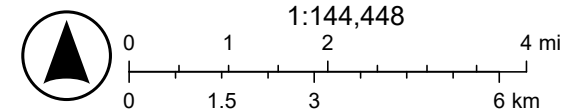
USA Flood Hazard Areas

 0.2% Annual Chance Flood Hazard

 1% Annual Chance Flood Hazard

 Regulatory Floodway

World Hillshade



Esri, NASA, NGA, USGS, Texas Parks & Wildlife, CONANP, Esri, TomTom, Garmin, SafeGraph, GeoTechnologies, Inc, METI/NASA, USGS, EPA, NPS,

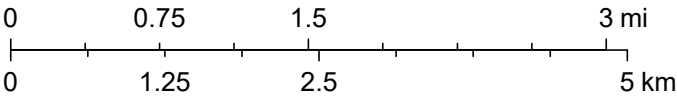
RHODES FEDERAL UNIT #224 (08.16.2013)



10/1/2024, 2:33:03 PM

OSE Streams

1:72,224



Texas Parks & Wildlife, CONANP, Esri, TomTom, Garmin, SafeGraph, GeoTechnologies, Inc, METI/NASA, USGS, EPA, NPS, USDA, USFWS, Esri, NASA, NGA, USGS, FEMA, NM OSE

APPENDIX E

CARMONA RESOURCES





Environment Testing

- 1
- 2
- 3
- 4
- 5
- 6
- 7
- 8
- 9
- 10
- 11
- 12
- 13
- 14

ANALYTICAL REPORT

PREPARED FOR

Attn: Ashton Thielke
Carmona Resources
310 W Wall St
Ste 500
Midland, Texas 79701

Generated 9/30/2024 11:33:43 AM

JOB DESCRIPTION

Rhodes Federal Unit #224 (08.16.2013)
Lea Co, NM

JOB NUMBER

880-48962-1

Eurofins Midland
1211 W. Florida Ave
Midland TX 79701

Eurofins Midland

Job Notes

This report may not be reproduced except in full, and with written approval from the laboratory. The results relate only to the samples tested. For questions please contact the Project Manager at the e-mail address or telephone number listed on this page.

Analytical test results meet all requirements of the associated regulatory program (i.e., NELAC (TNI), DoD, and ISO 17025) unless otherwise noted under the individual analysis.

Authorization



Generated
9/30/2024 11:33:43 AM

Authorized for release by
Jessica Kramer, Project Manager
Jessica.Kramer@et.eurofinsus.com
(432)704-5440

Client: Carmona Resources
Project/Site: Rhodes Federal Unit #224 (08.16.2013)

Laboratory Job ID: 880-48962-1
SDG: Lea Co, NM

Table of Contents

Cover Page	1
Table of Contents	3
Definitions/Glossary	4
Case Narrative	5
Client Sample Results	6
Surrogate Summary	15
QC Sample Results	17
QC Association Summary	25
Lab Chronicle	30
Certification Summary	34
Method Summary	35
Sample Summary	36
Chain of Custody	37
Receipt Checklists	39

- 1
- 2
- 3
- 4
- 5
- 6
- 7
- 8
- 9
- 10
- 11
- 12
- 13
- 14

Definitions/Glossary

Client: Carmona Resources
Project/Site: Rhodes Federal Unit #224 (08.16.2013)

Job ID: 880-48962-1
SDG: Lea Co, NM

Qualifiers

GC VOA

Qualifier	Qualifier Description
F1	MS and/or MSD recovery exceeds control limits.
F2	MS/MSD RPD exceeds control limits
S1-	Surrogate recovery exceeds control limits, low biased.
U	Indicates the analyte was analyzed for but not detected.

GC Semi VOA

Qualifier	Qualifier Description
S1+	Surrogate recovery exceeds control limits, high biased.
U	Indicates the analyte was analyzed for but not detected.

HPLC/IC

Qualifier	Qualifier Description
U	Indicates the analyte was analyzed for but not detected.

Glossary

Abbreviation	These commonly used abbreviations may or may not be present in this report.
¤	Listed under the "D" column to designate that the result is reported on a dry weight basis
%R	Percent Recovery
CFL	Contains Free Liquid
CFU	Colony Forming Unit
CNF	Contains No Free Liquid
DER	Duplicate Error Ratio (normalized absolute difference)
Dil Fac	Dilution Factor
DL	Detection Limit (DoD/DOE)
DL, RA, RE, IN	Indicates a Dilution, Re-analysis, Re-extraction, or additional Initial metals/anion analysis of the sample
DLC	Decision Level Concentration (Radiochemistry)
EDL	Estimated Detection Limit (Dioxin)
LOD	Limit of Detection (DoD/DOE)
LOQ	Limit of Quantitation (DoD/DOE)
MCL	EPA recommended "Maximum Contaminant Level"
MDA	Minimum Detectable Activity (Radiochemistry)
MDC	Minimum Detectable Concentration (Radiochemistry)
MDL	Method Detection Limit
ML	Minimum Level (Dioxin)
MPN	Most Probable Number
MQL	Method Quantitation Limit
NC	Not Calculated
ND	Not Detected at the reporting limit (or MDL or EDL if shown)
NEG	Negative / Absent
POS	Positive / Present
PQL	Practical Quantitation Limit
PRES	Presumptive
QC	Quality Control
RER	Relative Error Ratio (Radiochemistry)
RL	Reporting Limit or Requested Limit (Radiochemistry)
RPD	Relative Percent Difference, a measure of the relative difference between two points
TEF	Toxicity Equivalent Factor (Dioxin)
TEQ	Toxicity Equivalent Quotient (Dioxin)
TNTC	Too Numerous To Count

Case Narrative

Client: Carmona Resources
Project: Rhodes Federal Unit #224 (08.16.2013)

Job ID: 880-48962-1

Job ID: 880-48962-1

Eurofins Midland

Job Narrative 880-48962-1

Analytical test results meet all requirements of the associated regulatory program listed on the Accreditation/Certification Summary Page unless otherwise noted under the individual analysis. Data qualifiers and/or narrative comments are included to explain any exceptions, if applicable.

- Matrix QC may not be reported if insufficient sample is provided or site-specific QC samples were not submitted. In these situations, to demonstrate precision and accuracy at a batch level, a LCS/LCSD may be performed, unless otherwise specified in the method.
- Surrogate and/or isotope dilution analyte recoveries (if applicable) which are outside of the QC window are confirmed unless attributed to a dilution or otherwise noted in the narrative.

Regulated compliance samples (e.g. SDWA, NPDES) must comply with the associated agency requirements/permits.

Receipt

The samples were received on 9/25/2024 1:40 PM. Unless otherwise noted below, the samples arrived in good condition, and, where required, properly preserved and on ice. The temperature of the cooler at receipt time was 3.7°C.

Receipt Exceptions

The following samples were received and analyzed from an unpreserved bulk soil jar: H-1 (0-1') (880-48962-1), H-2 (0-1') (880-48962-2), H-3 (0-1') (880-48962-3), H-4 (0-1') (880-48962-4), S-1 (0-1.0') (880-48962-5), S-1 (1.5') (880-48962-6), S-1 (2.0') (880-48962-7), S-1 (3.0') (880-48962-8), S-2 (0-1.0') (880-48962-9), S-2 (1.5') (880-48962-10), S-2 (2.0') (880-48962-11) and S-2 (3.0') (880-48962-12).

GC VOA

Method 8021B: The matrix spike duplicate (MSD) recoveries for preparation batch 880-91778 and analytical batch 880-91775 were outside control limits. Non-homogeneity is suspected because the associated laboratory control sample (LCS) recovery was within acceptance limits.

Method 8021B: Surrogate recovery for the following samples were outside control limits: H-1 (0-1') (880-48962-1) and H-2 (0-1') (880-48962-2). Evidence of matrix interference is present; therefore, re-extraction and/or re-analysis was not performed.

No additional analytical or quality issues were noted, other than those described above or in the Definitions/ Glossary page.

Diesel Range Organics

Method 8015MOD_NM: The surrogate recovery for the blank associated with preparation batch 880-91660 and analytical batch 880-91803 was outside the upper control limits.

Method 8015MOD_NM: The surrogate recovery for the blank associated with preparation batch 880-91888 and analytical batch 880-91998 was outside the upper control limits.

Method 8015MOD_NM: The surrogate recovery for the blank associated with preparation batch 880-91869 and analytical batch 880-91877 was outside the upper control limits.

Method 8015MOD_NM: Surrogate recovery for the following samples were outside control limits: S-1 (0-1.0') (880-48962-5), S-1 (1.5') (880-48962-6), S-1 (2.0') (880-48962-7) and S-1 (3.0') (880-48962-8). Evidence of matrix interferences is not obvious.

No additional analytical or quality issues were noted, other than those described above or in the Definitions/ Glossary page.

HPLC/IC

No additional analytical or quality issues were noted, other than those described above or in the Definitions/ Glossary page.

Eurofins Midland

Client Sample Results

Client: Carmona Resources
Project/Site: Rhodes Federal Unit #224 (08.16.2013)

Job ID: 880-48962-1
SDG: Lea Co, NM

Client Sample ID: H-1 (0-1')

Lab Sample ID: 880-48962-1

Date Collected: 09/25/24 00:00

Matrix: Solid

Date Received: 09/25/24 13:40

Method: SW846 8021B - Volatile Organic Compounds (GC)

Analyte	Result	Qualifier	RL	MDL	Unit	D	Prepared	Analyzed	Dil Fac
Benzene	<0.00201	U	0.00201		mg/Kg		09/25/24 14:07	09/26/24 03:21	1
Toluene	<0.00201	U F1	0.00201		mg/Kg		09/25/24 14:07	09/26/24 03:21	1
Ethylbenzene	<0.00201	U	0.00201		mg/Kg		09/25/24 14:07	09/26/24 03:21	1
m-Xylene & p-Xylene	<0.00402	U F1	0.00402		mg/Kg		09/25/24 14:07	09/26/24 03:21	1
o-Xylene	0.00205	F2	0.00201		mg/Kg		09/25/24 14:07	09/26/24 03:21	1
Xylenes, Total	<0.00402	U	0.00402		mg/Kg		09/25/24 14:07	09/26/24 03:21	1

Surrogate	%Recovery	Qualifier	Limits	Prepared	Analyzed	Dil Fac
4-Bromofluorobenzene (Surr)	52	S1-	70 - 130	09/25/24 14:07	09/26/24 03:21	1
1,4-Difluorobenzene (Surr)	73		70 - 130	09/25/24 14:07	09/26/24 03:21	1

Method: TAL SOP Total BTEX - Total BTEX Calculation

Analyte	Result	Qualifier	RL	MDL	Unit	D	Prepared	Analyzed	Dil Fac
Total BTEX	<0.00402	U	0.00402		mg/Kg			09/26/24 03:21	1

Method: SW846 8015 NM - Diesel Range Organics (DRO) (GC)

Analyte	Result	Qualifier	RL	MDL	Unit	D	Prepared	Analyzed	Dil Fac
Total TPH	<49.8	U	49.8		mg/Kg			09/26/24 17:19	1

Method: SW846 8015B NM - Diesel Range Organics (DRO) (GC)

Analyte	Result	Qualifier	RL	MDL	Unit	D	Prepared	Analyzed	Dil Fac
Gasoline Range Organics (GRO)-C6-C10	<49.8	U	49.8		mg/Kg		09/24/24 15:23	09/26/24 17:19	1
Diesel Range Organics (Over C10-C28)	<49.8	U	49.8		mg/Kg		09/24/24 15:23	09/26/24 17:19	1
Oil Range Organics (Over C28-C36)	<49.8	U	49.8		mg/Kg		09/24/24 15:23	09/26/24 17:19	1

Surrogate	%Recovery	Qualifier	Limits	Prepared	Analyzed	Dil Fac
1-Chlorooctane	106		70 - 130	09/24/24 15:23	09/26/24 17:19	1
o-Terphenyl	116		70 - 130	09/24/24 15:23	09/26/24 17:19	1

Method: EPA 300.0 - Anions, Ion Chromatography - Soluble

Analyte	Result	Qualifier	RL	MDL	Unit	D	Prepared	Analyzed	Dil Fac
Chloride	5.31		5.04		mg/Kg			09/26/24 17:37	1

Client Sample ID: H-2 (0-1')

Lab Sample ID: 880-48962-2

Date Collected: 09/25/24 00:00

Matrix: Solid

Date Received: 09/25/24 13:40

Method: SW846 8021B - Volatile Organic Compounds (GC)

Analyte	Result	Qualifier	RL	MDL	Unit	D	Prepared	Analyzed	Dil Fac
Benzene	<0.00200	U	0.00200		mg/Kg		09/25/24 14:07	09/26/24 03:41	1
Toluene	<0.00200	U	0.00200		mg/Kg		09/25/24 14:07	09/26/24 03:41	1
Ethylbenzene	<0.00200	U	0.00200		mg/Kg		09/25/24 14:07	09/26/24 03:41	1
m-Xylene & p-Xylene	<0.00399	U	0.00399		mg/Kg		09/25/24 14:07	09/26/24 03:41	1
o-Xylene	<0.00200	U	0.00200		mg/Kg		09/25/24 14:07	09/26/24 03:41	1
Xylenes, Total	<0.00399	U	0.00399		mg/Kg		09/25/24 14:07	09/26/24 03:41	1

Surrogate	%Recovery	Qualifier	Limits	Prepared	Analyzed	Dil Fac
4-Bromofluorobenzene (Surr)	67	S1-	70 - 130	09/25/24 14:07	09/26/24 03:41	1
1,4-Difluorobenzene (Surr)	94		70 - 130	09/25/24 14:07	09/26/24 03:41	1

Eurofins Midland

Client Sample Results

Client: Carmona Resources
Project/Site: Rhodes Federal Unit #224 (08.16.2013)

Job ID: 880-48962-1
SDG: Lea Co, NM

Client Sample ID: H-2 (0-1')

Lab Sample ID: 880-48962-2

Date Collected: 09/25/24 00:00

Matrix: Solid

Date Received: 09/25/24 13:40

Method: TAL SOP Total BTEX - Total BTEX Calculation

Analyte	Result	Qualifier	RL	MDL	Unit	D	Prepared	Analyzed	Dil Fac
Total BTEX	<0.00399	U	0.00399		mg/Kg			09/26/24 03:41	1

Method: SW846 8015 NM - Diesel Range Organics (DRO) (GC)

Analyte	Result	Qualifier	RL	MDL	Unit	D	Prepared	Analyzed	Dil Fac
Total TPH	53.1		49.7		mg/Kg			09/26/24 17:45	1

Method: SW846 8015B NM - Diesel Range Organics (DRO) (GC)

Analyte	Result	Qualifier	RL	MDL	Unit	D	Prepared	Analyzed	Dil Fac
Gasoline Range Organics (GRO)-C6-C10	<49.7	U	49.7		mg/Kg		09/24/24 15:23	09/26/24 17:45	1
Diesel Range Organics (Over C10-C28)	53.1		49.7		mg/Kg		09/24/24 15:23	09/26/24 17:45	1
Oil Range Organics (Over C28-C36)	<49.7	U	49.7		mg/Kg		09/24/24 15:23	09/26/24 17:45	1
Surrogate	%Recovery	Qualifier	Limits				Prepared	Analyzed	Dil Fac
1-Chlorooctane	102		70 - 130				09/24/24 15:23	09/26/24 17:45	1
o-Terphenyl	120		70 - 130				09/24/24 15:23	09/26/24 17:45	1

Method: EPA 300.0 - Anions, Ion Chromatography - Soluble

Analyte	Result	Qualifier	RL	MDL	Unit	D	Prepared	Analyzed	Dil Fac
Chloride	<5.03	U	5.03		mg/Kg			09/26/24 14:51	1

Client Sample ID: H-3 (0-1')

Lab Sample ID: 880-48962-3

Date Collected: 09/25/24 00:00

Matrix: Solid

Date Received: 09/25/24 13:40

Method: SW846 8021B - Volatile Organic Compounds (GC)

Analyte	Result	Qualifier	RL	MDL	Unit	D	Prepared	Analyzed	Dil Fac
Benzene	<0.00199	U	0.00199		mg/Kg		09/25/24 14:07	09/26/24 04:02	1
Toluene	<0.00199	U	0.00199		mg/Kg		09/25/24 14:07	09/26/24 04:02	1
Ethylbenzene	<0.00199	U	0.00199		mg/Kg		09/25/24 14:07	09/26/24 04:02	1
m-Xylene & p-Xylene	<0.00398	U	0.00398		mg/Kg		09/25/24 14:07	09/26/24 04:02	1
o-Xylene	<0.00199	U	0.00199		mg/Kg		09/25/24 14:07	09/26/24 04:02	1
Xylenes, Total	<0.00398	U	0.00398		mg/Kg		09/25/24 14:07	09/26/24 04:02	1
Surrogate	%Recovery	Qualifier	Limits				Prepared	Analyzed	Dil Fac
4-Bromofluorobenzene (Surr)	108		70 - 130				09/25/24 14:07	09/26/24 04:02	1
1,4-Difluorobenzene (Surr)	86		70 - 130				09/25/24 14:07	09/26/24 04:02	1

Method: TAL SOP Total BTEX - Total BTEX Calculation

Analyte	Result	Qualifier	RL	MDL	Unit	D	Prepared	Analyzed	Dil Fac
Total BTEX	<0.00398	U	0.00398		mg/Kg			09/26/24 04:02	1

Method: SW846 8015 NM - Diesel Range Organics (DRO) (GC)

Analyte	Result	Qualifier	RL	MDL	Unit	D	Prepared	Analyzed	Dil Fac
Total TPH	<50.0	U	50.0		mg/Kg			09/26/24 18:05	1

Method: SW846 8015B NM - Diesel Range Organics (DRO) (GC)

Analyte	Result	Qualifier	RL	MDL	Unit	D	Prepared	Analyzed	Dil Fac
Gasoline Range Organics (GRO)-C6-C10	<50.0	U	50.0		mg/Kg		09/24/24 15:23	09/26/24 18:05	1
Diesel Range Organics (Over C10-C28)	<50.0	U	50.0		mg/Kg		09/24/24 15:23	09/26/24 18:05	1

Eurofins Midland

Client Sample Results

Client: Carmona Resources
Project/Site: Rhodes Federal Unit #224 (08.16.2013)

Job ID: 880-48962-1
SDG: Lea Co, NM

Client Sample ID: H-3 (0-1')

Lab Sample ID: 880-48962-3

Date Collected: 09/25/24 00:00

Matrix: Solid

Date Received: 09/25/24 13:40

Method: SW846 8015B NM - Diesel Range Organics (DRO) (GC) (Continued)

Analyte	Result	Qualifier	RL	MDL	Unit	D	Prepared	Analyzed	Dil Fac
Oil Range Organics (Over C28-C36)	<50.0	U	50.0		mg/Kg		09/24/24 15:23	09/26/24 18:05	1
Surrogate	%Recovery	Qualifier	Limits				Prepared	Analyzed	Dil Fac
1-Chlorooctane	114		70 - 130				09/24/24 15:23	09/26/24 18:05	1
o-Terphenyl	126		70 - 130				09/24/24 15:23	09/26/24 18:05	1

Method: EPA 300.0 - Anions, Ion Chromatography - Soluble

Analyte	Result	Qualifier	RL	MDL	Unit	D	Prepared	Analyzed	Dil Fac
Chloride	<5.03	U	5.03		mg/Kg			09/26/24 15:07	1

Client Sample ID: H-4 (0-1')

Lab Sample ID: 880-48962-4

Date Collected: 09/25/24 00:00

Matrix: Solid

Date Received: 09/25/24 13:40

Method: SW846 8021B - Volatile Organic Compounds (GC)

Analyte	Result	Qualifier	RL	MDL	Unit	D	Prepared	Analyzed	Dil Fac
Benzene	<0.00201	U	0.00201		mg/Kg		09/25/24 14:07	09/26/24 04:22	1
Toluene	<0.00201	U	0.00201		mg/Kg		09/25/24 14:07	09/26/24 04:22	1
Ethylbenzene	<0.00201	U	0.00201		mg/Kg		09/25/24 14:07	09/26/24 04:22	1
m-Xylene & p-Xylene	<0.00402	U	0.00402		mg/Kg		09/25/24 14:07	09/26/24 04:22	1
o-Xylene	<0.00201	U	0.00201		mg/Kg		09/25/24 14:07	09/26/24 04:22	1
Xylenes, Total	<0.00402	U	0.00402		mg/Kg		09/25/24 14:07	09/26/24 04:22	1
Surrogate	%Recovery	Qualifier	Limits				Prepared	Analyzed	Dil Fac
4-Bromofluorobenzene (Surr)	87		70 - 130				09/25/24 14:07	09/26/24 04:22	1
1,4-Difluorobenzene (Surr)	96		70 - 130				09/25/24 14:07	09/26/24 04:22	1

Method: TAL SOP Total BTEX - Total BTEX Calculation

Analyte	Result	Qualifier	RL	MDL	Unit	D	Prepared	Analyzed	Dil Fac
Total BTEX	<0.00402	U	0.00402		mg/Kg			09/26/24 04:22	1

Method: SW846 8015 NM - Diesel Range Organics (DRO) (GC)

Analyte	Result	Qualifier	RL	MDL	Unit	D	Prepared	Analyzed	Dil Fac
Total TPH	<49.9	U	49.9		mg/Kg			09/26/24 18:25	1

Method: SW846 8015B NM - Diesel Range Organics (DRO) (GC)

Analyte	Result	Qualifier	RL	MDL	Unit	D	Prepared	Analyzed	Dil Fac
Gasoline Range Organics (GRO)-C6-C10	<49.9	U	49.9		mg/Kg		09/24/24 15:23	09/26/24 18:25	1
Diesel Range Organics (Over C10-C28)	<49.9	U	49.9		mg/Kg		09/24/24 15:23	09/26/24 18:25	1
Oil Range Organics (Over C28-C36)	<49.9	U	49.9		mg/Kg		09/24/24 15:23	09/26/24 18:25	1
Surrogate	%Recovery	Qualifier	Limits				Prepared	Analyzed	Dil Fac
1-Chlorooctane	114		70 - 130				09/24/24 15:23	09/26/24 18:25	1
o-Terphenyl	125		70 - 130				09/24/24 15:23	09/26/24 18:25	1

Method: EPA 300.0 - Anions, Ion Chromatography - Soluble

Analyte	Result	Qualifier	RL	MDL	Unit	D	Prepared	Analyzed	Dil Fac
Chloride	<5.03	U	5.03		mg/Kg			09/26/24 15:13	1

Eurofins Midland

Client Sample Results

Client: Carmona Resources
Project/Site: Rhodes Federal Unit #224 (08.16.2013)

Job ID: 880-48962-1
SDG: Lea Co, NM

Client Sample ID: S-1 (0-1.0')

Lab Sample ID: 880-48962-5

Date Collected: 09/25/24 00:00

Matrix: Solid

Date Received: 09/25/24 13:40

Method: SW846 8021B - Volatile Organic Compounds (GC)

Analyte	Result	Qualifier	RL	MDL	Unit	D	Prepared	Analyzed	Dil Fac
Benzene	<0.00199	U	0.00199		mg/Kg		09/25/24 14:07	09/26/24 04:43	1
Toluene	<0.00199	U	0.00199		mg/Kg		09/25/24 14:07	09/26/24 04:43	1
Ethylbenzene	<0.00199	U	0.00199		mg/Kg		09/25/24 14:07	09/26/24 04:43	1
m-Xylene & p-Xylene	<0.00398	U	0.00398		mg/Kg		09/25/24 14:07	09/26/24 04:43	1
o-Xylene	<0.00199	U	0.00199		mg/Kg		09/25/24 14:07	09/26/24 04:43	1
Xylenes, Total	<0.00398	U	0.00398		mg/Kg		09/25/24 14:07	09/26/24 04:43	1

Surrogate	%Recovery	Qualifier	Limits	Prepared	Analyzed	Dil Fac
4-Bromofluorobenzene (Surr)	92		70 - 130	09/25/24 14:07	09/26/24 04:43	1
1,4-Difluorobenzene (Surr)	97		70 - 130	09/25/24 14:07	09/26/24 04:43	1

Method: TAL SOP Total BTEX - Total BTEX Calculation

Analyte	Result	Qualifier	RL	MDL	Unit	D	Prepared	Analyzed	Dil Fac
Total BTEX	<0.00398	U	0.00398		mg/Kg			09/26/24 04:43	1

Method: SW846 8015 NM - Diesel Range Organics (DRO) (GC)

Analyte	Result	Qualifier	RL	MDL	Unit	D	Prepared	Analyzed	Dil Fac
Total TPH	<49.7	U	49.7		mg/Kg			09/28/24 01:43	1

Method: SW846 8015B NM - Diesel Range Organics (DRO) (GC)

Analyte	Result	Qualifier	RL	MDL	Unit	D	Prepared	Analyzed	Dil Fac
Gasoline Range Organics (GRO)-C6-C10	<49.7	U	49.7		mg/Kg		09/26/24 21:27	09/28/24 01:43	1
Diesel Range Organics (Over C10-C28)	<49.7	U	49.7		mg/Kg		09/26/24 21:27	09/28/24 01:43	1
Oil Range Organics (Over C28-C36)	<49.7	U	49.7		mg/Kg		09/26/24 21:27	09/28/24 01:43	1

Surrogate	%Recovery	Qualifier	Limits	Prepared	Analyzed	Dil Fac
1-Chlorooctane	112		70 - 130	09/26/24 21:27	09/28/24 01:43	1
o-Terphenyl	134	S1+	70 - 130	09/26/24 21:27	09/28/24 01:43	1

Method: EPA 300.0 - Anions, Ion Chromatography - Soluble

Analyte	Result	Qualifier	RL	MDL	Unit	D	Prepared	Analyzed	Dil Fac
Chloride	<5.03	U	5.03		mg/Kg			09/26/24 15:18	1

Client Sample ID: S-1 (1.5')

Lab Sample ID: 880-48962-6

Date Collected: 09/25/24 00:00

Matrix: Solid

Date Received: 09/25/24 13:40

Method: SW846 8021B - Volatile Organic Compounds (GC)

Analyte	Result	Qualifier	RL	MDL	Unit	D	Prepared	Analyzed	Dil Fac
Benzene	<0.00200	U	0.00200		mg/Kg		09/25/24 14:07	09/26/24 05:03	1
Toluene	<0.00200	U	0.00200		mg/Kg		09/25/24 14:07	09/26/24 05:03	1
Ethylbenzene	<0.00200	U	0.00200		mg/Kg		09/25/24 14:07	09/26/24 05:03	1
m-Xylene & p-Xylene	<0.00400	U	0.00400		mg/Kg		09/25/24 14:07	09/26/24 05:03	1
o-Xylene	<0.00200	U	0.00200		mg/Kg		09/25/24 14:07	09/26/24 05:03	1
Xylenes, Total	<0.00400	U	0.00400		mg/Kg		09/25/24 14:07	09/26/24 05:03	1

Surrogate	%Recovery	Qualifier	Limits	Prepared	Analyzed	Dil Fac
4-Bromofluorobenzene (Surr)	88		70 - 130	09/25/24 14:07	09/26/24 05:03	1
1,4-Difluorobenzene (Surr)	96		70 - 130	09/25/24 14:07	09/26/24 05:03	1

Eurofins Midland

Client Sample Results

Client: Carmona Resources
Project/Site: Rhodes Federal Unit #224 (08.16.2013)

Job ID: 880-48962-1
SDG: Lea Co, NM

Client Sample ID: S-1 (1.5')

Lab Sample ID: 880-48962-6

Date Collected: 09/25/24 00:00

Matrix: Solid

Date Received: 09/25/24 13:40

Method: TAL SOP Total BTEX - Total BTEX Calculation

Analyte	Result	Qualifier	RL	MDL	Unit	D	Prepared	Analyzed	Dil Fac
Total BTEX	<0.00400	U	0.00400		mg/Kg			09/26/24 05:03	1

Method: SW846 8015 NM - Diesel Range Organics (DRO) (GC)

Analyte	Result	Qualifier	RL	MDL	Unit	D	Prepared	Analyzed	Dil Fac
Total TPH	<50.0	U	50.0		mg/Kg			09/28/24 02:03	1

Method: SW846 8015B NM - Diesel Range Organics (DRO) (GC)

Analyte	Result	Qualifier	RL	MDL	Unit	D	Prepared	Analyzed	Dil Fac
Gasoline Range Organics (GRO)-C6-C10	<50.0	U	50.0		mg/Kg		09/26/24 21:27	09/28/24 02:03	1
Diesel Range Organics (Over C10-C28)	<50.0	U	50.0		mg/Kg		09/26/24 21:27	09/28/24 02:03	1
Oil Range Organics (Over C28-C36)	<50.0	U	50.0		mg/Kg		09/26/24 21:27	09/28/24 02:03	1
Surrogate	%Recovery	Qualifier	Limits				Prepared	Analyzed	Dil Fac
1-Chlorooctane	114		70 - 130				09/26/24 21:27	09/28/24 02:03	1
o-Terphenyl	136	S1+	70 - 130				09/26/24 21:27	09/28/24 02:03	1

Method: EPA 300.0 - Anions, Ion Chromatography - Soluble

Analyte	Result	Qualifier	RL	MDL	Unit	D	Prepared	Analyzed	Dil Fac
Chloride	<5.05	U	5.05		mg/Kg			09/26/24 15:24	1

Client Sample ID: S-1 (2.0')

Lab Sample ID: 880-48962-7

Date Collected: 09/25/24 00:00

Matrix: Solid

Date Received: 09/25/24 13:40

Method: SW846 8021B - Volatile Organic Compounds (GC)

Analyte	Result	Qualifier	RL	MDL	Unit	D	Prepared	Analyzed	Dil Fac
Benzene	<0.00200	U	0.00200		mg/Kg		09/25/24 14:07	09/26/24 05:24	1
Toluene	<0.00200	U	0.00200		mg/Kg		09/25/24 14:07	09/26/24 05:24	1
Ethylbenzene	<0.00200	U	0.00200		mg/Kg		09/25/24 14:07	09/26/24 05:24	1
m-Xylene & p-Xylene	<0.00399	U	0.00399		mg/Kg		09/25/24 14:07	09/26/24 05:24	1
o-Xylene	<0.00200	U	0.00200		mg/Kg		09/25/24 14:07	09/26/24 05:24	1
Xylenes, Total	<0.00399	U	0.00399		mg/Kg		09/25/24 14:07	09/26/24 05:24	1
Surrogate	%Recovery	Qualifier	Limits				Prepared	Analyzed	Dil Fac
4-Bromofluorobenzene (Surr)	99		70 - 130				09/25/24 14:07	09/26/24 05:24	1
1,4-Difluorobenzene (Surr)	92		70 - 130				09/25/24 14:07	09/26/24 05:24	1

Method: TAL SOP Total BTEX - Total BTEX Calculation

Analyte	Result	Qualifier	RL	MDL	Unit	D	Prepared	Analyzed	Dil Fac
Total BTEX	<0.00399	U	0.00399		mg/Kg			09/26/24 05:24	1

Method: SW846 8015 NM - Diesel Range Organics (DRO) (GC)

Analyte	Result	Qualifier	RL	MDL	Unit	D	Prepared	Analyzed	Dil Fac
Total TPH	<49.9	U	49.9		mg/Kg			09/28/24 02:24	1

Method: SW846 8015B NM - Diesel Range Organics (DRO) (GC)

Analyte	Result	Qualifier	RL	MDL	Unit	D	Prepared	Analyzed	Dil Fac
Gasoline Range Organics (GRO)-C6-C10	<49.9	U	49.9		mg/Kg		09/26/24 21:27	09/28/24 02:24	1
Diesel Range Organics (Over C10-C28)	<49.9	U	49.9		mg/Kg		09/26/24 21:27	09/28/24 02:24	1

Eurofins Midland

Client Sample Results

Client: Carmona Resources
Project/Site: Rhodes Federal Unit #224 (08.16.2013)

Job ID: 880-48962-1
SDG: Lea Co, NM

Client Sample ID: S-1 (2.0')

Lab Sample ID: 880-48962-7

Date Collected: 09/25/24 00:00

Matrix: Solid

Date Received: 09/25/24 13:40

Method: SW846 8015B NM - Diesel Range Organics (DRO) (GC) (Continued)

Analyte	Result	Qualifier	RL	MDL	Unit	D	Prepared	Analyzed	Dil Fac
Oil Range Organics (Over C28-C36)	<49.9	U	49.9		mg/Kg		09/26/24 21:27	09/28/24 02:24	1
Surrogate	%Recovery	Qualifier	Limits				Prepared	Analyzed	Dil Fac
1-Chlorooctane	118		70 - 130				09/26/24 21:27	09/28/24 02:24	1
o-Terphenyl	139	S1+	70 - 130				09/26/24 21:27	09/28/24 02:24	1

Method: EPA 300.0 - Anions, Ion Chromatography - Soluble

Analyte	Result	Qualifier	RL	MDL	Unit	D	Prepared	Analyzed	Dil Fac
Chloride	<4.98	U	4.98		mg/Kg			09/26/24 15:40	1

Client Sample ID: S-1 (3.0')

Lab Sample ID: 880-48962-8

Date Collected: 09/25/24 00:00

Matrix: Solid

Date Received: 09/25/24 13:40

Method: SW846 8021B - Volatile Organic Compounds (GC)

Analyte	Result	Qualifier	RL	MDL	Unit	D	Prepared	Analyzed	Dil Fac
Benzene	<0.00201	U	0.00201		mg/Kg		09/25/24 14:07	09/26/24 05:45	1
Toluene	<0.00201	U	0.00201		mg/Kg		09/25/24 14:07	09/26/24 05:45	1
Ethylbenzene	<0.00201	U	0.00201		mg/Kg		09/25/24 14:07	09/26/24 05:45	1
m-Xylene & p-Xylene	<0.00402	U	0.00402		mg/Kg		09/25/24 14:07	09/26/24 05:45	1
o-Xylene	<0.00201	U	0.00201		mg/Kg		09/25/24 14:07	09/26/24 05:45	1
Xylenes, Total	<0.00402	U	0.00402		mg/Kg		09/25/24 14:07	09/26/24 05:45	1
Surrogate	%Recovery	Qualifier	Limits				Prepared	Analyzed	Dil Fac
4-Bromofluorobenzene (Surr)	93		70 - 130				09/25/24 14:07	09/26/24 05:45	1
1,4-Difluorobenzene (Surr)	91		70 - 130				09/25/24 14:07	09/26/24 05:45	1

Method: TAL SOP Total BTEX - Total BTEX Calculation

Analyte	Result	Qualifier	RL	MDL	Unit	D	Prepared	Analyzed	Dil Fac
Total BTEX	<0.00402	U	0.00402		mg/Kg			09/26/24 05:45	1

Method: SW846 8015 NM - Diesel Range Organics (DRO) (GC)

Analyte	Result	Qualifier	RL	MDL	Unit	D	Prepared	Analyzed	Dil Fac
Total TPH	<49.8	U	49.8		mg/Kg			09/28/24 02:44	1

Method: SW846 8015B NM - Diesel Range Organics (DRO) (GC)

Analyte	Result	Qualifier	RL	MDL	Unit	D	Prepared	Analyzed	Dil Fac
Gasoline Range Organics (GRO)-C6-C10	<49.8	U	49.8		mg/Kg		09/26/24 21:27	09/28/24 02:44	1
Diesel Range Organics (Over C10-C28)	<49.8	U	49.8		mg/Kg		09/26/24 21:27	09/28/24 02:44	1
Oil Range Organics (Over C28-C36)	<49.8	U	49.8		mg/Kg		09/26/24 21:27	09/28/24 02:44	1
Surrogate	%Recovery	Qualifier	Limits				Prepared	Analyzed	Dil Fac
1-Chlorooctane	112		70 - 130				09/26/24 21:27	09/28/24 02:44	1
o-Terphenyl	133	S1+	70 - 130				09/26/24 21:27	09/28/24 02:44	1

Method: EPA 300.0 - Anions, Ion Chromatography - Soluble

Analyte	Result	Qualifier	RL	MDL	Unit	D	Prepared	Analyzed	Dil Fac
Chloride	5.76		4.96		mg/Kg			09/26/24 15:45	1

Eurofins Midland

Client Sample Results

Client: Carmona Resources
Project/Site: Rhodes Federal Unit #224 (08.16.2013)

Job ID: 880-48962-1
SDG: Lea Co, NM

Client Sample ID: S-2 (0-1.0')

Lab Sample ID: 880-48962-9

Date Collected: 09/25/24 00:00

Matrix: Solid

Date Received: 09/25/24 13:40

Method: SW846 8021B - Volatile Organic Compounds (GC)

Analyte	Result	Qualifier	RL	MDL	Unit	D	Prepared	Analyzed	Dil Fac
Benzene	<0.00199	U	0.00199		mg/Kg		09/25/24 14:07	09/26/24 06:05	1
Toluene	<0.00199	U	0.00199		mg/Kg		09/25/24 14:07	09/26/24 06:05	1
Ethylbenzene	<0.00199	U	0.00199		mg/Kg		09/25/24 14:07	09/26/24 06:05	1
m-Xylene & p-Xylene	<0.00398	U	0.00398		mg/Kg		09/25/24 14:07	09/26/24 06:05	1
o-Xylene	<0.00199	U	0.00199		mg/Kg		09/25/24 14:07	09/26/24 06:05	1
Xylenes, Total	<0.00398	U	0.00398		mg/Kg		09/25/24 14:07	09/26/24 06:05	1

Surrogate	%Recovery	Qualifier	Limits	Prepared	Analyzed	Dil Fac
4-Bromofluorobenzene (Surr)	100		70 - 130	09/25/24 14:07	09/26/24 06:05	1
1,4-Difluorobenzene (Surr)	92		70 - 130	09/25/24 14:07	09/26/24 06:05	1

Method: TAL SOP Total BTEX - Total BTEX Calculation

Analyte	Result	Qualifier	RL	MDL	Unit	D	Prepared	Analyzed	Dil Fac
Total BTEX	<0.00398	U	0.00398		mg/Kg			09/26/24 06:05	1

Method: SW846 8015 NM - Diesel Range Organics (DRO) (GC)

Analyte	Result	Qualifier	RL	MDL	Unit	D	Prepared	Analyzed	Dil Fac
Total TPH	<49.7	U	49.7		mg/Kg			09/28/24 03:04	1

Method: SW846 8015B NM - Diesel Range Organics (DRO) (GC)

Analyte	Result	Qualifier	RL	MDL	Unit	D	Prepared	Analyzed	Dil Fac
Gasoline Range Organics (GRO)-C6-C10	<49.7	U	49.7		mg/Kg		09/26/24 21:27	09/28/24 03:04	1
Diesel Range Organics (Over C10-C28)	<49.7	U	49.7		mg/Kg		09/26/24 21:27	09/28/24 03:04	1
Oil Range Organics (Over C28-C36)	<49.7	U	49.7		mg/Kg		09/26/24 21:27	09/28/24 03:04	1

Surrogate	%Recovery	Qualifier	Limits	Prepared	Analyzed	Dil Fac
1-Chlorooctane	109		70 - 130	09/26/24 21:27	09/28/24 03:04	1
o-Terphenyl	126		70 - 130	09/26/24 21:27	09/28/24 03:04	1

Method: EPA 300.0 - Anions, Ion Chromatography - Soluble

Analyte	Result	Qualifier	RL	MDL	Unit	D	Prepared	Analyzed	Dil Fac
Chloride	<5.05	U	5.05		mg/Kg			09/26/24 15:51	1

Client Sample ID: S-2 (1.5')

Lab Sample ID: 880-48962-10

Date Collected: 09/25/24 00:00

Matrix: Solid

Date Received: 09/25/24 13:40

Method: SW846 8021B - Volatile Organic Compounds (GC)

Analyte	Result	Qualifier	RL	MDL	Unit	D	Prepared	Analyzed	Dil Fac
Benzene	<0.00201	U	0.00201		mg/Kg		09/25/24 14:07	09/26/24 06:26	1
Toluene	<0.00201	U	0.00201		mg/Kg		09/25/24 14:07	09/26/24 06:26	1
Ethylbenzene	<0.00201	U	0.00201		mg/Kg		09/25/24 14:07	09/26/24 06:26	1
m-Xylene & p-Xylene	<0.00402	U	0.00402		mg/Kg		09/25/24 14:07	09/26/24 06:26	1
o-Xylene	<0.00201	U	0.00201		mg/Kg		09/25/24 14:07	09/26/24 06:26	1
Xylenes, Total	<0.00402	U	0.00402		mg/Kg		09/25/24 14:07	09/26/24 06:26	1

Surrogate	%Recovery	Qualifier	Limits	Prepared	Analyzed	Dil Fac
4-Bromofluorobenzene (Surr)	90		70 - 130	09/25/24 14:07	09/26/24 06:26	1
1,4-Difluorobenzene (Surr)	96		70 - 130	09/25/24 14:07	09/26/24 06:26	1

Eurofins Midland

Client Sample Results

Client: Carmona Resources
Project/Site: Rhodes Federal Unit #224 (08.16.2013)

Job ID: 880-48962-1
SDG: Lea Co, NM

Client Sample ID: S-2 (1.5')

Lab Sample ID: 880-48962-10

Date Collected: 09/25/24 00:00

Matrix: Solid

Date Received: 09/25/24 13:40

Method: TAL SOP Total BTEX - Total BTEX Calculation

Analyte	Result	Qualifier	RL	MDL	Unit	D	Prepared	Analyzed	Dil Fac
Total BTEX	<0.00402	U	0.00402		mg/Kg			09/26/24 06:26	1

Method: SW846 8015 NM - Diesel Range Organics (DRO) (GC)

Analyte	Result	Qualifier	RL	MDL	Unit	D	Prepared	Analyzed	Dil Fac
Total TPH	<50.0	U	50.0		mg/Kg			09/28/24 03:25	1

Method: SW846 8015B NM - Diesel Range Organics (DRO) (GC)

Analyte	Result	Qualifier	RL	MDL	Unit	D	Prepared	Analyzed	Dil Fac
Gasoline Range Organics (GRO)-C6-C10	<50.0	U	50.0		mg/Kg		09/26/24 21:27	09/28/24 03:25	1
Diesel Range Organics (Over C10-C28)	<50.0	U	50.0		mg/Kg		09/26/24 21:27	09/28/24 03:25	1
Oil Range Organics (Over C28-C36)	<50.0	U	50.0		mg/Kg		09/26/24 21:27	09/28/24 03:25	1
Surrogate	%Recovery	Qualifier	Limits				Prepared	Analyzed	Dil Fac
1-Chlorooctane	107		70 - 130				09/26/24 21:27	09/28/24 03:25	1
o-Terphenyl	126		70 - 130				09/26/24 21:27	09/28/24 03:25	1

Method: EPA 300.0 - Anions, Ion Chromatography - Soluble

Analyte	Result	Qualifier	RL	MDL	Unit	D	Prepared	Analyzed	Dil Fac
Chloride	<4.97	U	4.97		mg/Kg			09/26/24 15:56	1

Client Sample ID: S-2 (2.0')

Lab Sample ID: 880-48962-11

Date Collected: 09/25/24 00:00

Matrix: Solid

Date Received: 09/25/24 13:40

Method: SW846 8021B - Volatile Organic Compounds (GC)

Analyte	Result	Qualifier	RL	MDL	Unit	D	Prepared	Analyzed	Dil Fac
Benzene	<0.00202	U	0.00202		mg/Kg		09/25/24 14:07	09/26/24 07:49	1
Toluene	<0.00202	U	0.00202		mg/Kg		09/25/24 14:07	09/26/24 07:49	1
Ethylbenzene	<0.00202	U	0.00202		mg/Kg		09/25/24 14:07	09/26/24 07:49	1
m-Xylene & p-Xylene	<0.00404	U	0.00404		mg/Kg		09/25/24 14:07	09/26/24 07:49	1
o-Xylene	<0.00202	U	0.00202		mg/Kg		09/25/24 14:07	09/26/24 07:49	1
Xylenes, Total	<0.00404	U	0.00404		mg/Kg		09/25/24 14:07	09/26/24 07:49	1
Surrogate	%Recovery	Qualifier	Limits				Prepared	Analyzed	Dil Fac
4-Bromofluorobenzene (Surr)	87		70 - 130				09/25/24 14:07	09/26/24 07:49	1
1,4-Difluorobenzene (Surr)	93		70 - 130				09/25/24 14:07	09/26/24 07:49	1

Method: TAL SOP Total BTEX - Total BTEX Calculation

Analyte	Result	Qualifier	RL	MDL	Unit	D	Prepared	Analyzed	Dil Fac
Total BTEX	<0.00404	U	0.00404		mg/Kg			09/26/24 07:49	1

Method: SW846 8015 NM - Diesel Range Organics (DRO) (GC)

Analyte	Result	Qualifier	RL	MDL	Unit	D	Prepared	Analyzed	Dil Fac
Total TPH	<50.0	U	50.0		mg/Kg			09/28/24 10:45	1

Method: SW846 8015B NM - Diesel Range Organics (DRO) (GC)

Analyte	Result	Qualifier	RL	MDL	Unit	D	Prepared	Analyzed	Dil Fac
Gasoline Range Organics (GRO)-C6-C10	<50.0	U	50.0		mg/Kg		09/27/24 09:09	09/28/24 10:45	1
Diesel Range Organics (Over C10-C28)	<50.0	U	50.0		mg/Kg		09/27/24 09:09	09/28/24 10:45	1

Eurofins Midland

Client Sample Results

Client: Carmona Resources
Project/Site: Rhodes Federal Unit #224 (08.16.2013)

Job ID: 880-48962-1
SDG: Lea Co, NM

Client Sample ID: S-2 (2.0')

Date Collected: 09/25/24 00:00

Date Received: 09/25/24 13:40

Lab Sample ID: 880-48962-11

Matrix: Solid

Method: SW846 8015B NM - Diesel Range Organics (DRO) (GC) (Continued)

Analyte	Result	Qualifier	RL	MDL	Unit	D	Prepared	Analyzed	Dil Fac
Oil Range Organics (Over C28-C36)	<50.0	U	50.0		mg/Kg		09/27/24 09:09	09/28/24 10:45	1
Surrogate	%Recovery	Qualifier	Limits				Prepared	Analyzed	Dil Fac
1-Chlorooctane	113		70 - 130				09/27/24 09:09	09/28/24 10:45	1
o-Terphenyl	123		70 - 130				09/27/24 09:09	09/28/24 10:45	1

Method: EPA 300.0 - Anions, Ion Chromatography - Soluble

Analyte	Result	Qualifier	RL	MDL	Unit	D	Prepared	Analyzed	Dil Fac
Chloride	<4.98	U	4.98		mg/Kg			09/26/24 16:02	1

Client Sample ID: S-2 (3.0')

Date Collected: 09/25/24 00:00

Date Received: 09/25/24 13:40

Lab Sample ID: 880-48962-12

Matrix: Solid

Method: SW846 8021B - Volatile Organic Compounds (GC)

Analyte	Result	Qualifier	RL	MDL	Unit	D	Prepared	Analyzed	Dil Fac
Benzene	<0.00199	U	0.00199		mg/Kg		09/25/24 14:07	09/26/24 08:10	1
Toluene	<0.00199	U	0.00199		mg/Kg		09/25/24 14:07	09/26/24 08:10	1
Ethylbenzene	<0.00199	U	0.00199		mg/Kg		09/25/24 14:07	09/26/24 08:10	1
m-Xylene & p-Xylene	<0.00398	U	0.00398		mg/Kg		09/25/24 14:07	09/26/24 08:10	1
o-Xylene	<0.00199	U	0.00199		mg/Kg		09/25/24 14:07	09/26/24 08:10	1
Xylenes, Total	<0.00398	U	0.00398		mg/Kg		09/25/24 14:07	09/26/24 08:10	1
Surrogate	%Recovery	Qualifier	Limits				Prepared	Analyzed	Dil Fac
4-Bromofluorobenzene (Surr)	89		70 - 130				09/25/24 14:07	09/26/24 08:10	1
1,4-Difluorobenzene (Surr)	89		70 - 130				09/25/24 14:07	09/26/24 08:10	1

Method: TAL SOP Total BTEX - Total BTEX Calculation

Analyte	Result	Qualifier	RL	MDL	Unit	D	Prepared	Analyzed	Dil Fac
Total BTEX	<0.00398	U	0.00398		mg/Kg			09/26/24 08:10	1

Method: SW846 8015 NM - Diesel Range Organics (DRO) (GC)

Analyte	Result	Qualifier	RL	MDL	Unit	D	Prepared	Analyzed	Dil Fac
Total TPH	<49.9	U	49.9		mg/Kg			09/28/24 11:46	1

Method: SW846 8015B NM - Diesel Range Organics (DRO) (GC)

Analyte	Result	Qualifier	RL	MDL	Unit	D	Prepared	Analyzed	Dil Fac
Gasoline Range Organics (GRO)-C6-C10	<49.9	U	49.9		mg/Kg		09/27/24 09:09	09/28/24 11:46	1
Diesel Range Organics (Over C10-C28)	<49.9	U	49.9		mg/Kg		09/27/24 09:09	09/28/24 11:46	1
Oil Range Organics (Over C28-C36)	<49.9	U	49.9		mg/Kg		09/27/24 09:09	09/28/24 11:46	1
Surrogate	%Recovery	Qualifier	Limits				Prepared	Analyzed	Dil Fac
1-Chlorooctane	120		70 - 130				09/27/24 09:09	09/28/24 11:46	1
o-Terphenyl	129		70 - 130				09/27/24 09:09	09/28/24 11:46	1

Method: EPA 300.0 - Anions, Ion Chromatography - Soluble

Analyte	Result	Qualifier	RL	MDL	Unit	D	Prepared	Analyzed	Dil Fac
Chloride	<4.96	U	4.96		mg/Kg			09/26/24 16:07	1

Eurofins Midland

Surrogate Summary

Client: Carmona Resources
Project/Site: Rhodes Federal Unit #224 (08.16.2013)

Job ID: 880-48962-1
SDG: Lea Co, NM

Method: 8021B - Volatile Organic Compounds (GC)

Matrix: Solid

Prep Type: Total/NA

		Percent Surrogate Recovery (Acceptance Limits)	
Lab Sample ID	Client Sample ID	BFB1 (70-130)	DFBZ1 (70-130)
880-48962-1	H-1 (0-1')	52 S1-	73
880-48962-1 MS	H-1 (0-1')	101	106
880-48962-1 MSD	H-1 (0-1')	84	106
880-48962-2	H-2 (0-1')	67 S1-	94
880-48962-3	H-3 (0-1')	108	86
880-48962-4	H-4 (0-1')	87	96
880-48962-5	S-1 (0-1.0')	92	97
880-48962-6	S-1 (1.5')	88	96
880-48962-7	S-1 (2.0')	99	92
880-48962-8	S-1 (3.0')	93	91
880-48962-9	S-2 (0-1.0')	100	92
880-48962-10	S-2 (1.5')	90	96
880-48962-11	S-2 (2.0')	87	93
880-48962-12	S-2 (3.0')	89	89
LCS 880-91778/1-A	Lab Control Sample	101	114
LCSD 880-91778/2-A	Lab Control Sample Dup	98	103
MB 880-91753/5-A	Method Blank	78	95
MB 880-91778/5-A	Method Blank	82	94
Surrogate Legend			
BFB = 4-Bromofluorobenzene (Surr)			
DFBZ = 1,4-Difluorobenzene (Surr)			

Method: 8015B NM - Diesel Range Organics (DRO) (GC)

Matrix: Solid

Prep Type: Total/NA

		Percent Surrogate Recovery (Acceptance Limits)	
Lab Sample ID	Client Sample ID	1CO1 (70-130)	OTPH1 (70-130)
880-48962-1	H-1 (0-1')	106	116
880-48962-2	H-2 (0-1')	102	120
880-48962-3	H-3 (0-1')	114	126
880-48962-4	H-4 (0-1')	114	125
880-48962-5	S-1 (0-1.0')	112	134 S1+
880-48962-6	S-1 (1.5')	114	136 S1+
880-48962-7	S-1 (2.0')	118	139 S1+
880-48962-8	S-1 (3.0')	112	133 S1+
880-48962-9	S-2 (0-1.0')	109	126
880-48962-10	S-2 (1.5')	107	126
880-48962-11	S-2 (2.0')	113	123
880-48962-11 MS	S-2 (2.0')	111	110
880-48962-11 MSD	S-2 (2.0')	108	107
880-48962-12	S-2 (3.0')	120	129
880-49052-A-5-B MS	Matrix Spike	111	119
880-49052-A-5-C MSD	Matrix Spike Duplicate	109	117
890-7148-A-65-B MS	Matrix Spike	104	100
890-7148-A-65-C MSD	Matrix Spike Duplicate	105	102
LCS 880-91660/2-A	Lab Control Sample	93	94
LCS 880-91869/2-A	Lab Control Sample	85	92
LCS 880-91888/2-A	Lab Control Sample	102	102

Eurofins Midland

Surrogate Summary

Client: Carmona Resources

Project/Site: Rhodes Federal Unit #224 (08.16.2013)

Job ID: 880-48962-1

SDG: Lea Co, NM

Method: 8015B NM - Diesel Range Organics (DRO) (GC) (Continued)

Matrix: Solid

Prep Type: Total/NA

		Percent Surrogate Recovery (Acceptance Limits)	
Lab Sample ID	Client Sample ID	1CO1 (70-130)	OTPH1 (70-130)
LCSD 880-91660/3-A	Lab Control Sample Dup	87	86
LCSD 880-91869/3-A	Lab Control Sample Dup	94	104
LCSD 880-91888/3-A	Lab Control Sample Dup	94	94
MB 880-91660/1-A	Method Blank	124	143 S1+
MB 880-91869/1-A	Method Blank	140 S1+	178 S1+
Surrogate Legend			
1CO = 1-Chlorooctane			
OTPH = o-Terphenyl			

Method: 8015B NM - Diesel Range Organics (DRO) (GC)

Matrix: Solid

Prep Type: Total/NA

		Percent Surrogate Recovery (Acceptance Limits)	
Lab Sample ID	Client Sample ID	1CO1	OTPH1
MB 880-91888/1-A	Method Blank		
Surrogate Legend			
1CO = 1-Chlorooctane			
OTPH = o-Terphenyl			

QC Sample Results

Client: Carmona Resources
Project/Site: Rhodes Federal Unit #224 (08.16.2013)

Job ID: 880-48962-1
SDG: Lea Co, NM

Method: 8021B - Volatile Organic Compounds (GC)

Lab Sample ID: MB 880-91753/5-A

Matrix: Solid

Analysis Batch: 91775

Client Sample ID: Method Blank

Prep Type: Total/NA

Prep Batch: 91753

Analyte	MB Result	MB Qualifier	RL	MDL	Unit	D	Prepared	Analyzed	Dil Fac
Benzene	<0.00200	U	0.00200		mg/Kg		09/25/24 12:05	09/25/24 16:18	1
Toluene	<0.00200	U	0.00200		mg/Kg		09/25/24 12:05	09/25/24 16:18	1
Ethylbenzene	<0.00200	U	0.00200		mg/Kg		09/25/24 12:05	09/25/24 16:18	1
m-Xylene & p-Xylene	<0.00400	U	0.00400		mg/Kg		09/25/24 12:05	09/25/24 16:18	1
o-Xylene	<0.00200	U	0.00200		mg/Kg		09/25/24 12:05	09/25/24 16:18	1
Xylenes, Total	<0.00400	U	0.00400		mg/Kg		09/25/24 12:05	09/25/24 16:18	1

Surrogate	MB %Recovery	MB Qualifier	Limits	Prepared	Analyzed	Dil Fac
4-Bromofluorobenzene (Surr)	78		70 - 130	09/25/24 12:05	09/25/24 16:18	1
1,4-Difluorobenzene (Surr)	95		70 - 130	09/25/24 12:05	09/25/24 16:18	1

Lab Sample ID: MB 880-91778/5-A

Matrix: Solid

Analysis Batch: 91775

Client Sample ID: Method Blank

Prep Type: Total/NA

Prep Batch: 91778

Analyte	MB Result	MB Qualifier	RL	MDL	Unit	D	Prepared	Analyzed	Dil Fac
Benzene	<0.00200	U	0.00200		mg/Kg		09/25/24 14:07	09/26/24 02:59	1
Toluene	<0.00200	U	0.00200		mg/Kg		09/25/24 14:07	09/26/24 02:59	1
Ethylbenzene	<0.00200	U	0.00200		mg/Kg		09/25/24 14:07	09/26/24 02:59	1
m-Xylene & p-Xylene	<0.00400	U	0.00400		mg/Kg		09/25/24 14:07	09/26/24 02:59	1
o-Xylene	<0.00200	U	0.00200		mg/Kg		09/25/24 14:07	09/26/24 02:59	1
Xylenes, Total	<0.00400	U	0.00400		mg/Kg		09/25/24 14:07	09/26/24 02:59	1

Surrogate	MB %Recovery	MB Qualifier	Limits	Prepared	Analyzed	Dil Fac
4-Bromofluorobenzene (Surr)	82		70 - 130	09/25/24 14:07	09/26/24 02:59	1
1,4-Difluorobenzene (Surr)	94		70 - 130	09/25/24 14:07	09/26/24 02:59	1

Lab Sample ID: LCS 880-91778/1-A

Matrix: Solid

Analysis Batch: 91775

Client Sample ID: Lab Control Sample

Prep Type: Total/NA

Prep Batch: 91778

Analyte	Spike Added	LCS Result	LCS Qualifier	Unit	D	%Rec	%Rec Limits
Benzene	0.100	0.09314		mg/Kg		93	70 - 130
Toluene	0.100	0.09147		mg/Kg		91	70 - 130
Ethylbenzene	0.100	0.09835		mg/Kg		98	70 - 130
m-Xylene & p-Xylene	0.200	0.2029		mg/Kg		101	70 - 130
o-Xylene	0.100	0.09935		mg/Kg		99	70 - 130

Surrogate	LCS %Recovery	LCS Qualifier	Limits
4-Bromofluorobenzene (Surr)	101		70 - 130
1,4-Difluorobenzene (Surr)	114		70 - 130

Lab Sample ID: LCSD 880-91778/2-A

Matrix: Solid

Analysis Batch: 91775

Client Sample ID: Lab Control Sample Dup

Prep Type: Total/NA

Prep Batch: 91778

Analyte	Spike Added	LCSD Result	LCSD Qualifier	Unit	D	%Rec	%Rec Limits	RPD	RPD Limit
Benzene	0.100	0.08341		mg/Kg		83	70 - 130	11	35

Eurofins Midland

QC Sample Results

Client: Carmona Resources
Project/Site: Rhodes Federal Unit #224 (08.16.2013)

Job ID: 880-48962-1
SDG: Lea Co, NM

Method: 8021B - Volatile Organic Compounds (GC) (Continued)

Lab Sample ID: LCSD 880-91778/2-A

Matrix: Solid

Analysis Batch: 91775

Client Sample ID: Lab Control Sample Dup

Prep Type: Total/NA

Prep Batch: 91778

Analyte	Spike Added	LCSD Result	LCSD Qualifier	Unit	D	%Rec	%Rec		RPD	Limit
							Limits	RPD		
Toluene	0.100	0.08109		mg/Kg		81	70 - 130	12		35
Ethylbenzene	0.100	0.09111		mg/Kg		91	70 - 130	8		35
m-Xylene & p-Xylene	0.200	0.1635		mg/Kg		82	70 - 130	21		35
o-Xylene	0.100	0.08076		mg/Kg		81	70 - 130	21		35

Surrogate	LCSD		Limits
	%Recovery	Qualifier	
4-Bromofluorobenzene (Surr)	98		70 - 130
1,4-Difluorobenzene (Surr)	103		70 - 130

Lab Sample ID: 880-48962-1 MS

Matrix: Solid

Analysis Batch: 91775

Client Sample ID: H-1 (0-1')

Prep Type: Total/NA

Prep Batch: 91778

Analyte	Sample Result	Sample Qualifier	Spike Added	MS Result	MS Qualifier	Unit	D	%Rec	%Rec	
									Limits	RPD
Benzene	<0.00201	U	0.100	0.08243		mg/Kg		82	70 - 130	
Toluene	<0.00201	U F1	0.100	0.07751		mg/Kg		78	70 - 130	
Ethylbenzene	<0.00201	U	0.100	0.08533		mg/Kg		84	70 - 130	
m-Xylene & p-Xylene	<0.00402	U F1	0.200	0.1565		mg/Kg		77	70 - 130	
o-Xylene	0.00205	F2	0.100	0.07665		mg/Kg		75	70 - 130	

Surrogate	MS		Limits
	%Recovery	Qualifier	
4-Bromofluorobenzene (Surr)	101		70 - 130
1,4-Difluorobenzene (Surr)	106		70 - 130

Lab Sample ID: 880-48962-1 MSD

Matrix: Solid

Analysis Batch: 91775

Client Sample ID: H-1 (0-1')

Prep Type: Total/NA

Prep Batch: 91778

Analyte	Sample Result	Sample Qualifier	Spike Added	MSD Result	MSD Qualifier	Unit	D	%Rec	%Rec		RPD	Limit
									Limits	RPD		
Benzene	<0.00201	U	0.100	0.07039		mg/Kg		70	70 - 130	16		35
Toluene	<0.00201	U F1	0.100	0.05813	F1	mg/Kg		58	70 - 130	29		35
Ethylbenzene	<0.00201	U	0.100	0.09508		mg/Kg		93	70 - 130	11		35
m-Xylene & p-Xylene	<0.00402	U F1	0.200	0.1191	F1	mg/Kg		58	70 - 130	27		35
o-Xylene	0.00205	F2	0.100	0.1104	F2	mg/Kg		108	70 - 130	36		35

Surrogate	MSD		Limits
	%Recovery	Qualifier	
4-Bromofluorobenzene (Surr)	84		70 - 130
1,4-Difluorobenzene (Surr)	106		70 - 130

Method: 8015B NM - Diesel Range Organics (DRO) (GC)

Lab Sample ID: MB 880-91660/1-A

Matrix: Solid

Analysis Batch: 91803

Client Sample ID: Method Blank

Prep Type: Total/NA

Prep Batch: 91660

Analyte	MB		RL	MDL	Unit	D	Prepared	Analyzed	Dil Fac
	Result	Qualifier							
Gasoline Range Organics (GRO)-C6-C10	<50.0	U	50.0		mg/Kg		09/24/24 15:23	09/26/24 08:27	1

Eurofins Midland

QC Sample Results

Client: Carmona Resources
Project/Site: Rhodes Federal Unit #224 (08.16.2013)

Job ID: 880-48962-1
SDG: Lea Co, NM

Method: 8015B NM - Diesel Range Organics (DRO) (GC) (Continued)

Lab Sample ID: MB 880-91660/1-A

Matrix: Solid

Analysis Batch: 91803

Client Sample ID: Method Blank

Prep Type: Total/NA

Prep Batch: 91660

Analyte	MB	MB	RL	MDL	Unit	D	Prepared	Analyzed	Dil Fac
	Result	Qualifier							
Diesel Range Organics (Over C10-C28)	<50.0	U	50.0		mg/Kg		09/24/24 15:23	09/26/24 08:27	1
Oil Range Organics (Over C28-C36)	<50.0	U	50.0		mg/Kg		09/24/24 15:23	09/26/24 08:27	1
Surrogate	MB	MB	Limits				Prepared	Analyzed	Dil Fac
	%Recovery	Qualifier							
1-Chlorooctane	124		70 - 130				09/24/24 15:23	09/26/24 08:27	1
o-Terphenyl	143	S1+	70 - 130				09/24/24 15:23	09/26/24 08:27	1

Lab Sample ID: LCS 880-91660/2-A

Matrix: Solid

Analysis Batch: 91803

Client Sample ID: Lab Control Sample

Prep Type: Total/NA

Prep Batch: 91660

Analyte	Spike Added	LCS Result	LCS Qualifier	Unit	D	%Rec	%Rec Limits		
Gasoline Range Organics (GRO)-C6-C10	1000	926.0		mg/Kg		93	70 - 130		
Diesel Range Organics (Over C10-C28)	1000	888.6		mg/Kg		89	70 - 130		
Surrogate	LCS	LCS	Limits						
	%Recovery	Qualifier							
1-Chlorooctane	93		70 - 130						
o-Terphenyl	94		70 - 130						

Lab Sample ID: LCSD 880-91660/3-A

Matrix: Solid

Analysis Batch: 91803

Client Sample ID: Lab Control Sample Dup

Prep Type: Total/NA

Prep Batch: 91660

Analyte	Spike Added	LCSD Result	LCSD Qualifier	Unit	D	%Rec	%Rec Limits	RPD	RPD Limit
Gasoline Range Organics (GRO)-C6-C10	1000	961.3		mg/Kg		96	70 - 130	4	20
Diesel Range Organics (Over C10-C28)	1000	854.2		mg/Kg		85	70 - 130	4	20
Surrogate	LCSD	LCSD	Limits						
	%Recovery	Qualifier							
1-Chlorooctane	87		70 - 130						
o-Terphenyl	86		70 - 130						

Lab Sample ID: 890-7148-A-65-B MS

Matrix: Solid

Analysis Batch: 91803

Client Sample ID: Matrix Spike

Prep Type: Total/NA

Prep Batch: 91660

Analyte	Sample	Sample	Spike Added	MS Result	MS Qualifier	Unit	D	%Rec	%Rec Limits		
	Result	Qualifier									
Gasoline Range Organics (GRO)-C6-C10	<50.0	U	995	880.9		mg/Kg		89	70 - 130		
Diesel Range Organics (Over C10-C28)	<50.0	U	995	939.6		mg/Kg		94	70 - 130		
Surrogate	MS	MS	Limits								
	%Recovery	Qualifier									
1-Chlorooctane	104		70 - 130								
o-Terphenyl	100		70 - 130								

Eurofins Midland

QC Sample Results

Client: Carmona Resources
Project/Site: Rhodes Federal Unit #224 (08.16.2013)

Job ID: 880-48962-1
SDG: Lea Co, NM

Method: 8015B NM - Diesel Range Organics (DRO) (GC) (Continued)

Lab Sample ID: 890-7148-A-65-C MSD

Matrix: Solid

Analysis Batch: 91803

Client Sample ID: Matrix Spike Duplicate

Prep Type: Total/NA

Prep Batch: 91660

Analyte	Sample Result	Sample Qualifier	Spike Added	MSD Result	MSD Qualifier	Unit	D	%Rec	%Rec Limits	RPD	RPD Limit
Gasoline Range Organics (GRO)-C6-C10	<50.0	U	995	878.8		mg/Kg		88	70 - 130	0	20
Diesel Range Organics (Over C10-C28)	<50.0	U	995	959.1		mg/Kg		96	70 - 130	2	20
Surrogate	MSD %Recovery	MSD Qualifier	Limits								
1-Chlorooctane	105		70 - 130								
o-Terphenyl	102		70 - 130								

Lab Sample ID: MB 880-91869/1-A

Matrix: Solid

Analysis Batch: 91877

Client Sample ID: Method Blank

Prep Type: Total/NA

Prep Batch: 91869

Analyte	MB Result	MB Qualifier	RL	MDL	Unit	D	Prepared	Analyzed	Dil Fac
Gasoline Range Organics (GRO)-C6-C10	<50.0	U	50.0		mg/Kg		09/26/24 21:26	09/27/24 20:15	1
Diesel Range Organics (Over C10-C28)	<50.0	U	50.0		mg/Kg		09/26/24 21:26	09/27/24 20:15	1
Oil Range Organics (Over C28-C36)	<50.0	U	50.0		mg/Kg		09/26/24 21:26	09/27/24 20:15	1
Surrogate	MB %Recovery	MB Qualifier	Limits				Prepared	Analyzed	Dil Fac
1-Chlorooctane	140	S1+	70 - 130				09/26/24 21:26	09/27/24 20:15	1
o-Terphenyl	178	S1+	70 - 130				09/26/24 21:26	09/27/24 20:15	1

Lab Sample ID: LCS 880-91869/2-A

Matrix: Solid

Analysis Batch: 91877

Client Sample ID: Lab Control Sample

Prep Type: Total/NA

Prep Batch: 91869

Analyte	Spike Added	LCS Result	LCS Qualifier	Unit	D	%Rec	%Rec Limits		
Gasoline Range Organics (GRO)-C6-C10	1000	1008		mg/Kg		101	70 - 130		
Diesel Range Organics (Over C10-C28)	1000	999.3		mg/Kg		100	70 - 130		
Surrogate	LCS %Recovery	LCS Qualifier	Limits						
1-Chlorooctane	85		70 - 130						
o-Terphenyl	92		70 - 130						

Lab Sample ID: LCSD 880-91869/3-A

Matrix: Solid

Analysis Batch: 91877

Client Sample ID: Lab Control Sample Dup

Prep Type: Total/NA

Prep Batch: 91869

Analyte	Spike Added	LCSD Result	LCSD Qualifier	Unit	D	%Rec	%Rec Limits	RPD	RPD Limit
Gasoline Range Organics (GRO)-C6-C10	1000	1062		mg/Kg		106	70 - 130	5	20
Diesel Range Organics (Over C10-C28)	1000	1077		mg/Kg		108	70 - 130	7	20

Eurofins Midland

QC Sample Results

Client: Carmona Resources
Project/Site: Rhodes Federal Unit #224 (08.16.2013)

Job ID: 880-48962-1
SDG: Lea Co, NM

Method: 8015B NM - Diesel Range Organics (DRO) (GC) (Continued)

Lab Sample ID: LCSD 880-91869/3-A
Matrix: Solid
Analysis Batch: 91877

Client Sample ID: Lab Control Sample Dup
Prep Type: Total/NA
Prep Batch: 91869

	LCSD	LCSD	
Surrogate	%Recovery	Qualifier	Limits
1-Chlorooctane	94		70 - 130
o-Terphenyl	104		70 - 130

Lab Sample ID: 880-49052-A-5-B MS
Matrix: Solid
Analysis Batch: 91877

Client Sample ID: Matrix Spike
Prep Type: Total/NA
Prep Batch: 91869

	Sample	Sample	Spike	MS	MS				%Rec	
Analyte	Result	Qualifier	Added	Result	Qualifier	Unit	D	%Rec	Limits	
Gasoline Range Organics (GRO)-C6-C10	<49.9	U	996	983.9		mg/Kg		97	70 - 130	
Diesel Range Organics (Over C10-C28)	<49.9	U	996	1124		mg/Kg		110	70 - 130	
Surrogate	%Recovery	Qualifier	Limits							
1-Chlorooctane	111		70 - 130							
o-Terphenyl	119		70 - 130							

Lab Sample ID: 880-49052-A-5-C MSD
Matrix: Solid
Analysis Batch: 91877

Client Sample ID: Matrix Spike Duplicate
Prep Type: Total/NA
Prep Batch: 91869

	Sample	Sample	Spike	MSD	MSD				%Rec		RPD	
Analyte	Result	Qualifier	Added	Result	Qualifier	Unit	D	%Rec	Limits	RPD	Limit	
Gasoline Range Organics (GRO)-C6-C10	<49.9	U	996	947.1		mg/Kg		94	70 - 130	4	20	
Diesel Range Organics (Over C10-C28)	<49.9	U	996	1100		mg/Kg		108	70 - 130	2	20	
Surrogate	%Recovery	Qualifier	Limits									
1-Chlorooctane	109		70 - 130									
o-Terphenyl	117		70 - 130									

Lab Sample ID: MB 880-91888/1-A
Matrix: Solid
Analysis Batch: 91998

Client Sample ID: Method Blank
Prep Type: Total/NA
Prep Batch: 91888

	MB	MB									
Analyte	Result	Qualifier	RL	MDL	Unit	D	Prepared	Analyzed	Dil Fac		
Gasoline Range Organics (GRO)-C6-C10	<50.0	U	50.0		mg/Kg		09/27/24 09:09	09/28/24 08:23	1		
Diesel Range Organics (Over C10-C28)	<50.0	U	50.0		mg/Kg		09/27/24 09:09	09/28/24 08:23	1		
Oil Range Organics (Over C28-C36)	<50.0	U	50.0		mg/Kg		09/27/24 09:09	09/28/24 08:23	1		
Surrogate	%Recovery	Qualifier	Limits				Prepared	Analyzed	Dil Fac		
1-Chlorooctane							09/27/24 09:09	09/28/24 08:23	1		
o-Terphenyl							09/27/24 09:09	09/28/24 08:23	1		

Eurofins Midland

QC Sample Results

Client: Carmona Resources
Project/Site: Rhodes Federal Unit #224 (08.16.2013)

Job ID: 880-48962-1
SDG: Lea Co, NM

Method: 8015B NM - Diesel Range Organics (DRO) (GC) (Continued)

Lab Sample ID: LCS 880-91888/2-A

Matrix: Solid

Analysis Batch: 91998

Client Sample ID: Lab Control Sample

Prep Type: Total/NA

Prep Batch: 91888

Analyte	Spike Added	LCS Result	LCS Qualifier	Unit	D	%Rec	%Rec Limits
Gasoline Range Organics (GRO)-C6-C10	1000	1047		mg/Kg		105	70 - 130
Diesel Range Organics (Over C10-C28)	1000	1046		mg/Kg		105	70 - 130
Surrogate	%Recovery	LCS Qualifier	Limits				
1-Chlorooctane	102		70 - 130				
o-Terphenyl	102		70 - 130				

Lab Sample ID: LCSD 880-91888/3-A

Matrix: Solid

Analysis Batch: 91998

Client Sample ID: Lab Control Sample Dup

Prep Type: Total/NA

Prep Batch: 91888

Analyte	Spike Added	LCSD Result	LCSD Qualifier	Unit	D	%Rec	%Rec Limits	RPD	RPD Limit
Gasoline Range Organics (GRO)-C6-C10	1000	997.8		mg/Kg		100	70 - 130	5	20
Diesel Range Organics (Over C10-C28)	1000	1029		mg/Kg		103	70 - 130	2	20
Surrogate	%Recovery	LCSD Qualifier	Limits						
1-Chlorooctane	94		70 - 130						
o-Terphenyl	94		70 - 130						

Lab Sample ID: 880-48962-11 MS

Matrix: Solid

Analysis Batch: 91998

Client Sample ID: S-2 (2.0')

Prep Type: Total/NA

Prep Batch: 91888

Analyte	Sample Result	Sample Qualifier	Spike Added	MS Result	MS Qualifier	Unit	D	%Rec	%Rec Limits
Gasoline Range Organics (GRO)-C6-C10	<50.0	U	998	795.5		mg/Kg		78	70 - 130
Diesel Range Organics (Over C10-C28)	<50.0	U	998	981.7		mg/Kg		96	70 - 130
Surrogate	%Recovery	MS Qualifier	Limits						
1-Chlorooctane	111		70 - 130						
o-Terphenyl	110		70 - 130						

Lab Sample ID: 880-48962-11 MSD

Matrix: Solid

Analysis Batch: 91998

Client Sample ID: S-2 (2.0')

Prep Type: Total/NA

Prep Batch: 91888

Analyte	Sample Result	Sample Qualifier	Spike Added	MSD Result	MSD Qualifier	Unit	D	%Rec	%Rec Limits	RPD	RPD Limit
Gasoline Range Organics (GRO)-C6-C10	<50.0	U	998	770.7		mg/Kg		75	70 - 130	3	20
Diesel Range Organics (Over C10-C28)	<50.0	U	998	958.0		mg/Kg		94	70 - 130	2	20
Surrogate	%Recovery	MSD Qualifier	Limits								
1-Chlorooctane	108		70 - 130								

Eurofins Midland

QC Sample Results

Client: Carmona Resources
Project/Site: Rhodes Federal Unit #224 (08.16.2013)

Job ID: 880-48962-1
SDG: Lea Co, NM

Method: 8015B NM - Diesel Range Organics (DRO) (GC) (Continued)

Lab Sample ID: 880-48962-11 MSD
Matrix: Solid
Analysis Batch: 91998

Client Sample ID: S-2 (2.0')
Prep Type: Total/NA
Prep Batch: 91888

	MSD	MSD	
Surrogate	%Recovery	Qualifier	Limits
<i>o</i> -Terphenyl	107		70 - 130

Method: 300.0 - Anions, Ion Chromatography

Lab Sample ID: MB 880-91809/1-A
Matrix: Solid
Analysis Batch: 91818

Client Sample ID: Method Blank
Prep Type: Soluble

Analyte	MB	MB								
	Result	Qualifier	RL	MDL	Unit	D	Prepared	Analyzed	Dil	Fac
Chloride	<5.00	U	5.00		mg/Kg			09/26/24 13:04		1

Lab Sample ID: LCS 880-91809/2-A
Matrix: Solid
Analysis Batch: 91818

Client Sample ID: Lab Control Sample
Prep Type: Soluble

Analyte		Spike	LCS	LCS				%Rec		
		Added	Result	Qualifier	Unit	D	%Rec	Limits		
Chloride		250	247.0		mg/Kg		99	90 - 110		

Lab Sample ID: LCSD 880-91809/3-A
Matrix: Solid
Analysis Batch: 91818

Client Sample ID: Lab Control Sample Dup
Prep Type: Soluble

Analyte		Spike	LCSD	LCSD				%Rec		RPD
		Added	Result	Qualifier	Unit	D	%Rec	Limits	RPD	Limit
Chloride		250	247.7		mg/Kg		99	90 - 110	0	20

Lab Sample ID: 880-48961-A-8-D MS
Matrix: Solid
Analysis Batch: 91818

Client Sample ID: Matrix Spike
Prep Type: Soluble

Analyte	Sample	Sample	Spike	MS	MS			%Rec		
	Result	Qualifier	Added	Result	Qualifier	Unit	D	%Rec	Limits	
Chloride	<4.98	U	249	248.2		mg/Kg		99	90 - 110	

Lab Sample ID: 880-48961-A-8-E MSD
Matrix: Solid
Analysis Batch: 91818

Client Sample ID: Matrix Spike Duplicate
Prep Type: Soluble

Analyte	Sample	Sample	Spike	MSD	MSD			%Rec		RPD
	Result	Qualifier	Added	Result	Qualifier	Unit	D	%Rec	Limits	RPD
Chloride	<4.98	U	249	249.0		mg/Kg		99	90 - 110	0

Lab Sample ID: MB 880-91811/1-A
Matrix: Solid
Analysis Batch: 91826

Client Sample ID: Method Blank
Prep Type: Soluble

Analyte	MB	MB								
	Result	Qualifier	RL	MDL	Unit	D	Prepared	Analyzed	Dil	Fac
Chloride	<5.00	U	5.00		mg/Kg			09/26/24 14:35		1

Eurofins Midland

QC Sample Results

Client: Carmona Resources
Project/Site: Rhodes Federal Unit #224 (08.16.2013)

Job ID: 880-48962-1
SDG: Lea Co, NM

Method: 300.0 - Anions, Ion Chromatography (Continued)

Lab Sample ID: LCS 880-91811/2-A						Client Sample ID: Lab Control Sample					
Matrix: Solid						Prep Type: Soluble					
Analysis Batch: 91826											
Analyte			Spike Added	LCS Result	LCS Qualifier	Unit	D	%Rec	%Rec Limits		
Chloride			250	239.9		mg/Kg		96	90 - 110		

Lab Sample ID: LCSD 880-91811/3-A						Client Sample ID: Lab Control Sample Dup					
Matrix: Solid						Prep Type: Soluble					
Analysis Batch: 91826											
Analyte			Spike Added	LCSD Result	LCSD Qualifier	Unit	D	%Rec	%Rec Limits	RPD	RPD Limit
Chloride			250	241.1		mg/Kg		96	90 - 110	0	20

Lab Sample ID: 880-48962-2 MS						Client Sample ID: H-2 (0-1')					
Matrix: Solid						Prep Type: Soluble					
Analysis Batch: 91826											
Analyte	Sample Result	Sample Qualifier	Spike Added	MS Result	MS Qualifier	Unit	D	%Rec	%Rec Limits		
Chloride	<5.03	U	252	248.4		mg/Kg		97	90 - 110		

Lab Sample ID: 880-48962-2 MSD						Client Sample ID: H-2 (0-1')					
Matrix: Solid						Prep Type: Soluble					
Analysis Batch: 91826											
Analyte	Sample Result	Sample Qualifier	Spike Added	MSD Result	MSD Qualifier	Unit	D	%Rec	%Rec Limits	RPD	RPD Limit
Chloride	<5.03	U	252	249.3		mg/Kg		98	90 - 110	0	20

Lab Sample ID: 880-48962-12 MS						Client Sample ID: S-2 (3.0')					
Matrix: Solid						Prep Type: Soluble					
Analysis Batch: 91826											
Analyte	Sample Result	Sample Qualifier	Spike Added	MS Result	MS Qualifier	Unit	D	%Rec	%Rec Limits		
Chloride	<4.96	U	248	238.5		mg/Kg		95	90 - 110		

Lab Sample ID: 880-48962-12 MSD						Client Sample ID: S-2 (3.0')					
Matrix: Solid						Prep Type: Soluble					
Analysis Batch: 91826											
Analyte	Sample Result	Sample Qualifier	Spike Added	MSD Result	MSD Qualifier	Unit	D	%Rec	%Rec Limits	RPD	RPD Limit
Chloride	<4.96	U	248	239.3		mg/Kg		95	90 - 110	0	20

QC Association Summary

Client: Carmona Resources
Project/Site: Rhodes Federal Unit #224 (08.16.2013)

Job ID: 880-48962-1
SDG: Lea Co, NM

GC VOA

Prep Batch: 91753

Lab Sample ID	Client Sample ID	Prep Type	Matrix	Method	Prep Batch
MB 880-91753/5-A	Method Blank	Total/NA	Solid	5035	

Analysis Batch: 91775

Lab Sample ID	Client Sample ID	Prep Type	Matrix	Method	Prep Batch
880-48962-1	H-1 (0-1')	Total/NA	Solid	8021B	91778
880-48962-2	H-2 (0-1')	Total/NA	Solid	8021B	91778
880-48962-3	H-3 (0-1')	Total/NA	Solid	8021B	91778
880-48962-4	H-4 (0-1')	Total/NA	Solid	8021B	91778
880-48962-5	S-1 (0-1.0')	Total/NA	Solid	8021B	91778
880-48962-6	S-1 (1.5')	Total/NA	Solid	8021B	91778
880-48962-7	S-1 (2.0')	Total/NA	Solid	8021B	91778
880-48962-8	S-1 (3.0')	Total/NA	Solid	8021B	91778
880-48962-9	S-2 (0-1.0')	Total/NA	Solid	8021B	91778
880-48962-10	S-2 (1.5')	Total/NA	Solid	8021B	91778
880-48962-11	S-2 (2.0')	Total/NA	Solid	8021B	91778
880-48962-12	S-2 (3.0')	Total/NA	Solid	8021B	91778
MB 880-91753/5-A	Method Blank	Total/NA	Solid	8021B	91753
MB 880-91778/5-A	Method Blank	Total/NA	Solid	8021B	91778
LCS 880-91778/1-A	Lab Control Sample	Total/NA	Solid	8021B	91778
LCSD 880-91778/2-A	Lab Control Sample Dup	Total/NA	Solid	8021B	91778
880-48962-1 MS	H-1 (0-1')	Total/NA	Solid	8021B	91778
880-48962-1 MSD	H-1 (0-1')	Total/NA	Solid	8021B	91778

Prep Batch: 91778

Lab Sample ID	Client Sample ID	Prep Type	Matrix	Method	Prep Batch
880-48962-1	H-1 (0-1')	Total/NA	Solid	5035	
880-48962-2	H-2 (0-1')	Total/NA	Solid	5035	
880-48962-3	H-3 (0-1')	Total/NA	Solid	5035	
880-48962-4	H-4 (0-1')	Total/NA	Solid	5035	
880-48962-5	S-1 (0-1.0')	Total/NA	Solid	5035	
880-48962-6	S-1 (1.5')	Total/NA	Solid	5035	
880-48962-7	S-1 (2.0')	Total/NA	Solid	5035	
880-48962-8	S-1 (3.0')	Total/NA	Solid	5035	
880-48962-9	S-2 (0-1.0')	Total/NA	Solid	5035	
880-48962-10	S-2 (1.5')	Total/NA	Solid	5035	
880-48962-11	S-2 (2.0')	Total/NA	Solid	5035	
880-48962-12	S-2 (3.0')	Total/NA	Solid	5035	
MB 880-91778/5-A	Method Blank	Total/NA	Solid	5035	
LCS 880-91778/1-A	Lab Control Sample	Total/NA	Solid	5035	
LCSD 880-91778/2-A	Lab Control Sample Dup	Total/NA	Solid	5035	
880-48962-1 MS	H-1 (0-1')	Total/NA	Solid	5035	
880-48962-1 MSD	H-1 (0-1')	Total/NA	Solid	5035	

Analysis Batch: 91849

Lab Sample ID	Client Sample ID	Prep Type	Matrix	Method	Prep Batch
880-48962-1	H-1 (0-1')	Total/NA	Solid	Total BTEX	
880-48962-2	H-2 (0-1')	Total/NA	Solid	Total BTEX	
880-48962-3	H-3 (0-1')	Total/NA	Solid	Total BTEX	
880-48962-4	H-4 (0-1')	Total/NA	Solid	Total BTEX	
880-48962-5	S-1 (0-1.0')	Total/NA	Solid	Total BTEX	
880-48962-6	S-1 (1.5')	Total/NA	Solid	Total BTEX	

Eurofins Midland

QC Association Summary

Client: Carmona Resources
Project/Site: Rhodes Federal Unit #224 (08.16.2013)

Job ID: 880-48962-1
SDG: Lea Co, NM

GC VOA (Continued)

Analysis Batch: 91849 (Continued)

Lab Sample ID	Client Sample ID	Prep Type	Matrix	Method	Prep Batch
880-48962-7	S-1 (2.0')	Total/NA	Solid	Total BTEX	
880-48962-8	S-1 (3.0')	Total/NA	Solid	Total BTEX	
880-48962-9	S-2 (0-1.0')	Total/NA	Solid	Total BTEX	
880-48962-10	S-2 (1.5')	Total/NA	Solid	Total BTEX	
880-48962-11	S-2 (2.0')	Total/NA	Solid	Total BTEX	
880-48962-12	S-2 (3.0')	Total/NA	Solid	Total BTEX	

GC Semi VOA

Prep Batch: 91660

Lab Sample ID	Client Sample ID	Prep Type	Matrix	Method	Prep Batch
880-48962-1	H-1 (0-1')	Total/NA	Solid	8015NM Prep	
880-48962-2	H-2 (0-1')	Total/NA	Solid	8015NM Prep	
880-48962-3	H-3 (0-1')	Total/NA	Solid	8015NM Prep	
880-48962-4	H-4 (0-1')	Total/NA	Solid	8015NM Prep	
MB 880-91660/1-A	Method Blank	Total/NA	Solid	8015NM Prep	
LCS 880-91660/2-A	Lab Control Sample	Total/NA	Solid	8015NM Prep	
LCSD 880-91660/3-A	Lab Control Sample Dup	Total/NA	Solid	8015NM Prep	
890-7148-A-65-B MS	Matrix Spike	Total/NA	Solid	8015NM Prep	
890-7148-A-65-C MSD	Matrix Spike Duplicate	Total/NA	Solid	8015NM Prep	

Analysis Batch: 91803

Lab Sample ID	Client Sample ID	Prep Type	Matrix	Method	Prep Batch
880-48962-1	H-1 (0-1')	Total/NA	Solid	8015B NM	91660
880-48962-2	H-2 (0-1')	Total/NA	Solid	8015B NM	91660
880-48962-3	H-3 (0-1')	Total/NA	Solid	8015B NM	91660
880-48962-4	H-4 (0-1')	Total/NA	Solid	8015B NM	91660
MB 880-91660/1-A	Method Blank	Total/NA	Solid	8015B NM	91660
LCS 880-91660/2-A	Lab Control Sample	Total/NA	Solid	8015B NM	91660
LCSD 880-91660/3-A	Lab Control Sample Dup	Total/NA	Solid	8015B NM	91660
890-7148-A-65-B MS	Matrix Spike	Total/NA	Solid	8015B NM	91660
890-7148-A-65-C MSD	Matrix Spike Duplicate	Total/NA	Solid	8015B NM	91660

Prep Batch: 91869

Lab Sample ID	Client Sample ID	Prep Type	Matrix	Method	Prep Batch
880-48962-5	S-1 (0-1.0')	Total/NA	Solid	8015NM Prep	
880-48962-6	S-1 (1.5')	Total/NA	Solid	8015NM Prep	
880-48962-7	S-1 (2.0')	Total/NA	Solid	8015NM Prep	
880-48962-8	S-1 (3.0')	Total/NA	Solid	8015NM Prep	
880-48962-9	S-2 (0-1.0')	Total/NA	Solid	8015NM Prep	
880-48962-10	S-2 (1.5')	Total/NA	Solid	8015NM Prep	
MB 880-91869/1-A	Method Blank	Total/NA	Solid	8015NM Prep	
LCS 880-91869/2-A	Lab Control Sample	Total/NA	Solid	8015NM Prep	
LCSD 880-91869/3-A	Lab Control Sample Dup	Total/NA	Solid	8015NM Prep	
880-49052-A-5-B MS	Matrix Spike	Total/NA	Solid	8015NM Prep	
880-49052-A-5-C MSD	Matrix Spike Duplicate	Total/NA	Solid	8015NM Prep	

Analysis Batch: 91877

Lab Sample ID	Client Sample ID	Prep Type	Matrix	Method	Prep Batch
880-48962-5	S-1 (0-1.0')	Total/NA	Solid	8015B NM	91869
880-48962-6	S-1 (1.5')	Total/NA	Solid	8015B NM	91869

Eurofins Midland

QC Association Summary

Client: Carmona Resources
Project/Site: Rhodes Federal Unit #224 (08.16.2013)

Job ID: 880-48962-1
SDG: Lea Co, NM

GC Semi VOA (Continued)

Analysis Batch: 91877 (Continued)

Lab Sample ID	Client Sample ID	Prep Type	Matrix	Method	Prep Batch
880-48962-7	S-1 (2.0')	Total/NA	Solid	8015B NM	91869
880-48962-8	S-1 (3.0')	Total/NA	Solid	8015B NM	91869
880-48962-9	S-2 (0-1.0')	Total/NA	Solid	8015B NM	91869
880-48962-10	S-2 (1.5')	Total/NA	Solid	8015B NM	91869
MB 880-91869/1-A	Method Blank	Total/NA	Solid	8015B NM	91869
LCS 880-91869/2-A	Lab Control Sample	Total/NA	Solid	8015B NM	91869
LCSD 880-91869/3-A	Lab Control Sample Dup	Total/NA	Solid	8015B NM	91869
880-49052-A-5-B MS	Matrix Spike	Total/NA	Solid	8015B NM	91869
880-49052-A-5-C MSD	Matrix Spike Duplicate	Total/NA	Solid	8015B NM	91869

Prep Batch: 91888

Lab Sample ID	Client Sample ID	Prep Type	Matrix	Method	Prep Batch
880-48962-11	S-2 (2.0')	Total/NA	Solid	8015NM Prep	
880-48962-12	S-2 (3.0')	Total/NA	Solid	8015NM Prep	
MB 880-91888/1-A	Method Blank	Total/NA	Solid	8015NM Prep	
LCS 880-91888/2-A	Lab Control Sample	Total/NA	Solid	8015NM Prep	
LCSD 880-91888/3-A	Lab Control Sample Dup	Total/NA	Solid	8015NM Prep	
880-48962-11 MS	S-2 (2.0')	Total/NA	Solid	8015NM Prep	
880-48962-11 MSD	S-2 (2.0')	Total/NA	Solid	8015NM Prep	

Analysis Batch: 91920

Lab Sample ID	Client Sample ID	Prep Type	Matrix	Method	Prep Batch
880-48962-1	H-1 (0-1')	Total/NA	Solid	8015 NM	
880-48962-2	H-2 (0-1')	Total/NA	Solid	8015 NM	
880-48962-3	H-3 (0-1')	Total/NA	Solid	8015 NM	
880-48962-4	H-4 (0-1')	Total/NA	Solid	8015 NM	
880-48962-5	S-1 (0-1.0')	Total/NA	Solid	8015 NM	
880-48962-6	S-1 (1.5')	Total/NA	Solid	8015 NM	
880-48962-7	S-1 (2.0')	Total/NA	Solid	8015 NM	
880-48962-8	S-1 (3.0')	Total/NA	Solid	8015 NM	
880-48962-9	S-2 (0-1.0')	Total/NA	Solid	8015 NM	
880-48962-10	S-2 (1.5')	Total/NA	Solid	8015 NM	
880-48962-11	S-2 (2.0')	Total/NA	Solid	8015 NM	
880-48962-12	S-2 (3.0')	Total/NA	Solid	8015 NM	

Analysis Batch: 91998

Lab Sample ID	Client Sample ID	Prep Type	Matrix	Method	Prep Batch
880-48962-11	S-2 (2.0')	Total/NA	Solid	8015B NM	91888
880-48962-12	S-2 (3.0')	Total/NA	Solid	8015B NM	91888
MB 880-91888/1-A	Method Blank	Total/NA	Solid	8015B NM	91888
LCS 880-91888/2-A	Lab Control Sample	Total/NA	Solid	8015B NM	91888
LCSD 880-91888/3-A	Lab Control Sample Dup	Total/NA	Solid	8015B NM	91888
880-48962-11 MS	S-2 (2.0')	Total/NA	Solid	8015B NM	91888
880-48962-11 MSD	S-2 (2.0')	Total/NA	Solid	8015B NM	91888

HPLC/IC

Leach Batch: 91809

Lab Sample ID	Client Sample ID	Prep Type	Matrix	Method	Prep Batch
880-48962-1	H-1 (0-1')	Soluble	Solid	DI Leach	
MB 880-91809/1-A	Method Blank	Soluble	Solid	DI Leach	

Eurofins Midland

QC Association Summary

Client: Carmona Resources
Project/Site: Rhodes Federal Unit #224 (08.16.2013)

Job ID: 880-48962-1
SDG: Lea Co, NM

HPLC/IC (Continued)

Leach Batch: 91809 (Continued)

Lab Sample ID	Client Sample ID	Prep Type	Matrix	Method	Prep Batch
LCS 880-91809/2-A	Lab Control Sample	Soluble	Solid	DI Leach	
LCSD 880-91809/3-A	Lab Control Sample Dup	Soluble	Solid	DI Leach	
880-48961-A-8-D MS	Matrix Spike	Soluble	Solid	DI Leach	
880-48961-A-8-E MSD	Matrix Spike Duplicate	Soluble	Solid	DI Leach	

Leach Batch: 91811

Lab Sample ID	Client Sample ID	Prep Type	Matrix	Method	Prep Batch
880-48962-2	H-2 (0-1')	Soluble	Solid	DI Leach	
880-48962-3	H-3 (0-1')	Soluble	Solid	DI Leach	
880-48962-4	H-4 (0-1')	Soluble	Solid	DI Leach	
880-48962-5	S-1 (0-1.0')	Soluble	Solid	DI Leach	
880-48962-6	S-1 (1.5')	Soluble	Solid	DI Leach	
880-48962-7	S-1 (2.0')	Soluble	Solid	DI Leach	
880-48962-8	S-1 (3.0')	Soluble	Solid	DI Leach	
880-48962-9	S-2 (0-1.0')	Soluble	Solid	DI Leach	
880-48962-10	S-2 (1.5')	Soluble	Solid	DI Leach	
880-48962-11	S-2 (2.0')	Soluble	Solid	DI Leach	
880-48962-12	S-2 (3.0')	Soluble	Solid	DI Leach	
MB 880-91811/1-A	Method Blank	Soluble	Solid	DI Leach	
LCS 880-91811/2-A	Lab Control Sample	Soluble	Solid	DI Leach	
LCSD 880-91811/3-A	Lab Control Sample Dup	Soluble	Solid	DI Leach	
880-48962-2 MS	H-2 (0-1')	Soluble	Solid	DI Leach	
880-48962-2 MSD	H-2 (0-1')	Soluble	Solid	DI Leach	
880-48962-12 MS	S-2 (3.0')	Soluble	Solid	DI Leach	
880-48962-12 MSD	S-2 (3.0')	Soluble	Solid	DI Leach	

Analysis Batch: 91818

Lab Sample ID	Client Sample ID	Prep Type	Matrix	Method	Prep Batch
880-48962-1	H-1 (0-1')	Soluble	Solid	300.0	91809
MB 880-91809/1-A	Method Blank	Soluble	Solid	300.0	91809
LCS 880-91809/2-A	Lab Control Sample	Soluble	Solid	300.0	91809
LCSD 880-91809/3-A	Lab Control Sample Dup	Soluble	Solid	300.0	91809
880-48961-A-8-D MS	Matrix Spike	Soluble	Solid	300.0	91809
880-48961-A-8-E MSD	Matrix Spike Duplicate	Soluble	Solid	300.0	91809

Analysis Batch: 91826

Lab Sample ID	Client Sample ID	Prep Type	Matrix	Method	Prep Batch
880-48962-2	H-2 (0-1')	Soluble	Solid	300.0	91811
880-48962-3	H-3 (0-1')	Soluble	Solid	300.0	91811
880-48962-4	H-4 (0-1')	Soluble	Solid	300.0	91811
880-48962-5	S-1 (0-1.0')	Soluble	Solid	300.0	91811
880-48962-6	S-1 (1.5')	Soluble	Solid	300.0	91811
880-48962-7	S-1 (2.0')	Soluble	Solid	300.0	91811
880-48962-8	S-1 (3.0')	Soluble	Solid	300.0	91811
880-48962-9	S-2 (0-1.0')	Soluble	Solid	300.0	91811
880-48962-10	S-2 (1.5')	Soluble	Solid	300.0	91811
880-48962-11	S-2 (2.0')	Soluble	Solid	300.0	91811
880-48962-12	S-2 (3.0')	Soluble	Solid	300.0	91811
MB 880-91811/1-A	Method Blank	Soluble	Solid	300.0	91811
LCS 880-91811/2-A	Lab Control Sample	Soluble	Solid	300.0	91811
LCSD 880-91811/3-A	Lab Control Sample Dup	Soluble	Solid	300.0	91811

Eurofins Midland

QC Association Summary

Client: Carmona Resources
Project/Site: Rhodes Federal Unit #224 (08.16.2013)

Job ID: 880-48962-1
SDG: Lea Co, NM

HPLC/IC (Continued)

Analysis Batch: 91826 (Continued)

Lab Sample ID	Client Sample ID	Prep Type	Matrix	Method	Prep Batch
880-48962-2 MS	H-2 (0-1')	Soluble	Solid	300.0	91811
880-48962-2 MSD	H-2 (0-1')	Soluble	Solid	300.0	91811
880-48962-12 MS	S-2 (3.0')	Soluble	Solid	300.0	91811
880-48962-12 MSD	S-2 (3.0')	Soluble	Solid	300.0	91811

- 1
- 2
- 3
- 4
- 5
- 6
- 7
- 8
- 9
- 10
- 11
- 12
- 13
- 14

Lab Chronicle

Client: Carmona Resources
Project/Site: Rhodes Federal Unit #224 (08.16.2013)

Job ID: 880-48962-1
SDG: Lea Co, NM

Client Sample ID: H-1 (0-1')
Date Collected: 09/25/24 00:00
Date Received: 09/25/24 13:40

Lab Sample ID: 880-48962-1
Matrix: Solid

Prep Type	Batch Type	Batch Method	Run	Dil Factor	Initial Amount	Final Amount	Batch Number	Prepared or Analyzed	Analyst	Lab
Total/NA	Prep	5035			4.98 g	5 mL	91778	09/25/24 14:07	MNR	EET MID
Total/NA	Analysis	8021B		1	5 mL	5 mL	91775	09/26/24 03:21	MNR	EET MID
Total/NA	Analysis	Total BTEX		1			91849	09/26/24 03:21	AJ	EET MID
Total/NA	Analysis	8015 NM		1			91920	09/26/24 17:19	SM	EET MID
Total/NA	Prep	8015NM Prep			10.04 g	10.00 mL	91660	09/24/24 15:23	EL	EET MID
Total/NA	Analysis	8015B NM		1	1 uL	1 uL	91803	09/26/24 17:19	SM	EET MID
Soluble	Leach	DI Leach			4.96 g	50 mL	91809	09/26/24 08:10	SA	EET MID
Soluble	Analysis	300.0		1	50 mL	50 mL	91818	09/26/24 17:37	SMC	EET MID

Client Sample ID: H-2 (0-1')
Date Collected: 09/25/24 00:00
Date Received: 09/25/24 13:40

Lab Sample ID: 880-48962-2
Matrix: Solid

Prep Type	Batch Type	Batch Method	Run	Dil Factor	Initial Amount	Final Amount	Batch Number	Prepared or Analyzed	Analyst	Lab
Total/NA	Prep	5035			5.01 g	5 mL	91778	09/25/24 14:07	MNR	EET MID
Total/NA	Analysis	8021B		1	5 mL	5 mL	91775	09/26/24 03:41	MNR	EET MID
Total/NA	Analysis	Total BTEX		1			91849	09/26/24 03:41	AJ	EET MID
Total/NA	Analysis	8015 NM		1			91920	09/26/24 17:45	SM	EET MID
Total/NA	Prep	8015NM Prep			10.06 g	10.00 mL	91660	09/24/24 15:23	EL	EET MID
Total/NA	Analysis	8015B NM		1	1 uL	1 uL	91803	09/26/24 17:45	SM	EET MID
Soluble	Leach	DI Leach			4.97 g	50 mL	91811	09/26/24 08:13	SA	EET MID
Soluble	Analysis	300.0		1	50 mL	50 mL	91826	09/26/24 14:51	SMC	EET MID

Client Sample ID: H-3 (0-1')
Date Collected: 09/25/24 00:00
Date Received: 09/25/24 13:40

Lab Sample ID: 880-48962-3
Matrix: Solid

Prep Type	Batch Type	Batch Method	Run	Dil Factor	Initial Amount	Final Amount	Batch Number	Prepared or Analyzed	Analyst	Lab
Total/NA	Prep	5035			5.03 g	5 mL	91778	09/25/24 14:07	MNR	EET MID
Total/NA	Analysis	8021B		1	5 mL	5 mL	91775	09/26/24 04:02	MNR	EET MID
Total/NA	Analysis	Total BTEX		1			91849	09/26/24 04:02	AJ	EET MID
Total/NA	Analysis	8015 NM		1			91920	09/26/24 18:05	SM	EET MID
Total/NA	Prep	8015NM Prep			10.01 g	10.00 mL	91660	09/24/24 15:23	EL	EET MID
Total/NA	Analysis	8015B NM		1	1 uL	1 uL	91803	09/26/24 18:05	SM	EET MID
Soluble	Leach	DI Leach			4.97 g	50 mL	91811	09/26/24 08:13	SA	EET MID
Soluble	Analysis	300.0		1	50 mL	50 mL	91826	09/26/24 15:07	SMC	EET MID

Client Sample ID: H-4 (0-1')
Date Collected: 09/25/24 00:00
Date Received: 09/25/24 13:40

Lab Sample ID: 880-48962-4
Matrix: Solid

Prep Type	Batch Type	Batch Method	Run	Dil Factor	Initial Amount	Final Amount	Batch Number	Prepared or Analyzed	Analyst	Lab
Total/NA	Prep	5035			4.98 g	5 mL	91778	09/25/24 14:07	MNR	EET MID
Total/NA	Analysis	8021B		1	5 mL	5 mL	91775	09/26/24 04:22	MNR	EET MID
Total/NA	Analysis	Total BTEX		1			91849	09/26/24 04:22	AJ	EET MID

Eurofins Midland

Lab Chronicle

Client: Carmona Resources
Project/Site: Rhodes Federal Unit #224 (08.16.2013)

Job ID: 880-48962-1
SDG: Lea Co, NM

Client Sample ID: H-4 (0-1')

Lab Sample ID: 880-48962-4

Date Collected: 09/25/24 00:00

Matrix: Solid

Date Received: 09/25/24 13:40

Prep Type	Batch Type	Batch Method	Run	Dil Factor	Initial Amount	Final Amount	Batch Number	Prepared or Analyzed	Analyst	Lab
Total/NA	Analysis	8015 NM		1			91920	09/26/24 18:25	SM	EET MID
Total/NA	Prep	8015NM Prep			10.02 g	10.00 mL	91660	09/24/24 15:23	EL	EET MID
Total/NA	Analysis	8015B NM		1	1 uL	1 uL	91803	09/26/24 18:25	SM	EET MID
Soluble	Leach	DI Leach			4.97 g	50 mL	91811	09/26/24 08:13	SA	EET MID
Soluble	Analysis	300.0		1	50 mL	50 mL	91826	09/26/24 15:13	SMC	EET MID

Client Sample ID: S-1 (0-1.0')

Lab Sample ID: 880-48962-5

Date Collected: 09/25/24 00:00

Matrix: Solid

Date Received: 09/25/24 13:40

Prep Type	Batch Type	Batch Method	Run	Dil Factor	Initial Amount	Final Amount	Batch Number	Prepared or Analyzed	Analyst	Lab
Total/NA	Prep	5035			5.03 g	5 mL	91778	09/25/24 14:07	MNR	EET MID
Total/NA	Analysis	8021B		1	5 mL	5 mL	91775	09/26/24 04:43	MNR	EET MID
Total/NA	Analysis	Total BTEX		1			91849	09/26/24 04:43	AJ	EET MID
Total/NA	Analysis	8015 NM		1			91920	09/28/24 01:43	SM	EET MID
Total/NA	Prep	8015NM Prep			10.06 g	10.00 mL	91869	09/26/24 21:27	EL	EET MID
Total/NA	Analysis	8015B NM		1	1 uL	1 uL	91877	09/28/24 01:43	SM	EET MID
Soluble	Leach	DI Leach			4.97 g	50 mL	91811	09/26/24 08:13	SA	EET MID
Soluble	Analysis	300.0		1	50 mL	50 mL	91826	09/26/24 15:18	SMC	EET MID

Client Sample ID: S-1 (1.5')

Lab Sample ID: 880-48962-6

Date Collected: 09/25/24 00:00

Matrix: Solid

Date Received: 09/25/24 13:40

Prep Type	Batch Type	Batch Method	Run	Dil Factor	Initial Amount	Final Amount	Batch Number	Prepared or Analyzed	Analyst	Lab
Total/NA	Prep	5035			5.00 g	5 mL	91778	09/25/24 14:07	MNR	EET MID
Total/NA	Analysis	8021B		1	5 mL	5 mL	91775	09/26/24 05:03	MNR	EET MID
Total/NA	Analysis	Total BTEX		1			91849	09/26/24 05:03	AJ	EET MID
Total/NA	Analysis	8015 NM		1			91920	09/28/24 02:03	SM	EET MID
Total/NA	Prep	8015NM Prep			10.01 g	10.00 mL	91869	09/26/24 21:27	EL	EET MID
Total/NA	Analysis	8015B NM		1	1 uL	1 uL	91877	09/28/24 02:03	SM	EET MID
Soluble	Leach	DI Leach			4.95 g	50 mL	91811	09/26/24 08:13	SA	EET MID
Soluble	Analysis	300.0		1	50 mL	50 mL	91826	09/26/24 15:24	SMC	EET MID

Client Sample ID: S-1 (2.0')

Lab Sample ID: 880-48962-7

Date Collected: 09/25/24 00:00

Matrix: Solid

Date Received: 09/25/24 13:40

Prep Type	Batch Type	Batch Method	Run	Dil Factor	Initial Amount	Final Amount	Batch Number	Prepared or Analyzed	Analyst	Lab
Total/NA	Prep	5035			5.01 g	5 mL	91778	09/25/24 14:07	MNR	EET MID
Total/NA	Analysis	8021B		1	5 mL	5 mL	91775	09/26/24 05:24	MNR	EET MID
Total/NA	Analysis	Total BTEX		1			91849	09/26/24 05:24	AJ	EET MID
Total/NA	Analysis	8015 NM		1			91920	09/28/24 02:24	SM	EET MID
Total/NA	Prep	8015NM Prep			10.02 g	10.00 mL	91869	09/26/24 21:27	EL	EET MID
Total/NA	Analysis	8015B NM		1	1 uL	1 uL	91877	09/28/24 02:24	SM	EET MID

Eurofins Midland

Lab Chronicle

Client: Carmona Resources
Project/Site: Rhodes Federal Unit #224 (08.16.2013)

Job ID: 880-48962-1
SDG: Lea Co, NM

Client Sample ID: S-1 (2.0')
Date Collected: 09/25/24 00:00
Date Received: 09/25/24 13:40

Lab Sample ID: 880-48962-7
Matrix: Solid

Prep Type	Batch Type	Batch Method	Run	Dil Factor	Initial Amount	Final Amount	Batch Number	Prepared or Analyzed	Analyst	Lab
Soluble	Leach	DI Leach			5.02 g	50 mL	91811	09/26/24 08:13	SA	EET MID
Soluble	Analysis	300.0		1	50 mL	50 mL	91826	09/26/24 15:40	SMC	EET MID

Client Sample ID: S-1 (3.0')
Date Collected: 09/25/24 00:00
Date Received: 09/25/24 13:40

Lab Sample ID: 880-48962-8
Matrix: Solid

Prep Type	Batch Type	Batch Method	Run	Dil Factor	Initial Amount	Final Amount	Batch Number	Prepared or Analyzed	Analyst	Lab
Total/NA	Prep	5035			4.98 g	5 mL	91778	09/25/24 14:07	MNR	EET MID
Total/NA	Analysis	8021B		1	5 mL	5 mL	91775	09/26/24 05:45	MNR	EET MID
Total/NA	Analysis	Total BTEX		1			91849	09/26/24 05:45	AJ	EET MID
Total/NA	Analysis	8015 NM		1			91920	09/28/24 02:44	SM	EET MID
Total/NA	Prep	8015NM Prep			10.04 g	10.00 mL	91869	09/26/24 21:27	EL	EET MID
Total/NA	Analysis	8015B NM		1	1 uL	1 uL	91877	09/28/24 02:44	SM	EET MID
Soluble	Leach	DI Leach			5.04 g	50 mL	91811	09/26/24 08:13	SA	EET MID
Soluble	Analysis	300.0		1	50 mL	50 mL	91826	09/26/24 15:45	SMC	EET MID

Client Sample ID: S-2 (0-1.0')
Date Collected: 09/25/24 00:00
Date Received: 09/25/24 13:40

Lab Sample ID: 880-48962-9
Matrix: Solid

Prep Type	Batch Type	Batch Method	Run	Dil Factor	Initial Amount	Final Amount	Batch Number	Prepared or Analyzed	Analyst	Lab
Total/NA	Prep	5035			5.03 g	5 mL	91778	09/25/24 14:07	MNR	EET MID
Total/NA	Analysis	8021B		1	5 mL	5 mL	91775	09/26/24 06:05	MNR	EET MID
Total/NA	Analysis	Total BTEX		1			91849	09/26/24 06:05	AJ	EET MID
Total/NA	Analysis	8015 NM		1			91920	09/28/24 03:04	SM	EET MID
Total/NA	Prep	8015NM Prep			10.06 g	10.00 mL	91869	09/26/24 21:27	EL	EET MID
Total/NA	Analysis	8015B NM		1	1 uL	1 uL	91877	09/28/24 03:04	SM	EET MID
Soluble	Leach	DI Leach			4.95 g	50 mL	91811	09/26/24 08:13	SA	EET MID
Soluble	Analysis	300.0		1	50 mL	50 mL	91826	09/26/24 15:51	SMC	EET MID

Client Sample ID: S-2 (1.5')
Date Collected: 09/25/24 00:00
Date Received: 09/25/24 13:40

Lab Sample ID: 880-48962-10
Matrix: Solid

Prep Type	Batch Type	Batch Method	Run	Dil Factor	Initial Amount	Final Amount	Batch Number	Prepared or Analyzed	Analyst	Lab
Total/NA	Prep	5035			4.97 g	5 mL	91778	09/25/24 14:07	MNR	EET MID
Total/NA	Analysis	8021B		1	5 mL	5 mL	91775	09/26/24 06:26	MNR	EET MID
Total/NA	Analysis	Total BTEX		1			91849	09/26/24 06:26	AJ	EET MID
Total/NA	Analysis	8015 NM		1			91920	09/28/24 03:25	SM	EET MID
Total/NA	Prep	8015NM Prep			10.01 g	10.00 mL	91869	09/26/24 21:27	EL	EET MID
Total/NA	Analysis	8015B NM		1	1 uL	1 uL	91877	09/28/24 03:25	SM	EET MID
Soluble	Leach	DI Leach			5.03 g	50 mL	91811	09/26/24 08:13	SA	EET MID
Soluble	Analysis	300.0		1	50 mL	50 mL	91826	09/26/24 15:56	SMC	EET MID

Lab Chronicle

Client: Carmona Resources
Project/Site: Rhodes Federal Unit #224 (08.16.2013)

Job ID: 880-48962-1
SDG: Lea Co, NM

Client Sample ID: S-2 (2.0')
Date Collected: 09/25/24 00:00
Date Received: 09/25/24 13:40

Lab Sample ID: 880-48962-11
Matrix: Solid

Prep Type	Batch Type	Batch Method	Run	Dil Factor	Initial Amount	Final Amount	Batch Number	Prepared or Analyzed	Analyst	Lab
Total/NA	Prep	5035			4.95 g	5 mL	91778	09/25/24 14:07	MNR	EET MID
Total/NA	Analysis	8021B		1	5 mL	5 mL	91775	09/26/24 07:49	MNR	EET MID
Total/NA	Analysis	Total BTEX		1			91849	09/26/24 07:49	AJ	EET MID
Total/NA	Analysis	8015 NM		1			91920	09/28/24 10:45	SM	EET MID
Total/NA	Prep	8015NM Prep			10.00 g	10.00 mL	91888	09/27/24 09:09	EL	EET MID
Total/NA	Analysis	8015B NM		1	1 uL	1 uL	91998	09/28/24 10:45	SM	EET MID
Soluble	Leach	DI Leach			5.02 g	50 mL	91811	09/26/24 08:13	SA	EET MID
Soluble	Analysis	300.0		1	50 mL	50 mL	91826	09/26/24 16:02	SMC	EET MID

Client Sample ID: S-2 (3.0')
Date Collected: 09/25/24 00:00
Date Received: 09/25/24 13:40

Lab Sample ID: 880-48962-12
Matrix: Solid

Prep Type	Batch Type	Batch Method	Run	Dil Factor	Initial Amount	Final Amount	Batch Number	Prepared or Analyzed	Analyst	Lab
Total/NA	Prep	5035			5.03 g	5 mL	91778	09/25/24 14:07	MNR	EET MID
Total/NA	Analysis	8021B		1	5 mL	5 mL	91775	09/26/24 08:10	MNR	EET MID
Total/NA	Analysis	Total BTEX		1			91849	09/26/24 08:10	AJ	EET MID
Total/NA	Analysis	8015 NM		1			91920	09/28/24 11:46	SM	EET MID
Total/NA	Prep	8015NM Prep			10.03 g	10.00 mL	91888	09/27/24 09:09	EL	EET MID
Total/NA	Analysis	8015B NM		1	1 uL	1 uL	91998	09/28/24 11:46	SM	EET MID
Soluble	Leach	DI Leach			5.04 g	50 mL	91811	09/26/24 08:13	SA	EET MID
Soluble	Analysis	300.0		1	50 mL	50 mL	91826	09/26/24 16:07	SMC	EET MID

Laboratory References:
EET MID = Eurofins Midland, 1211 W. Florida Ave, Midland, TX 79701, TEL (432)704-5440

Accreditation/Certification Summary

Client: Carmona Resources
Project/Site: Rhodes Federal Unit #224 (08.16.2013)

Job ID: 880-48962-1
SDG: Lea Co, NM

Laboratory: Eurofins Midland

Unless otherwise noted, all analytes for this laboratory were covered under each accreditation/certification below.

Authority	Program	Identification Number	Expiration Date
Texas	NELAP	T104704400	06-30-25
The following analytes are included in this report, but the laboratory is not certified by the governing authority. This list may include analytes for which the agency does not offer certification.			
Analysis Method	Prep Method	Matrix	Analyte
300.0		Solid	Chloride
8015 NM		Solid	Total TPH
8015B NM	8015NM Prep	Solid	Diesel Range Organics (Over C10-C28)
8015B NM	8015NM Prep	Solid	Gasoline Range Organics (GRO)-C6-C10
8015B NM	8015NM Prep	Solid	Oil Range Organics (Over C28-C36)
8021B	5035	Solid	Benzene
8021B	5035	Solid	Ethylbenzene
8021B	5035	Solid	m-Xylene & p-Xylene
8021B	5035	Solid	o-Xylene
8021B	5035	Solid	Toluene
8021B	5035	Solid	Xylenes, Total
Total BTEX		Solid	Total BTEX

Method Summary

Client: Carmona Resources
Project/Site: Rhodes Federal Unit #224 (08.16.2013)

Job ID: 880-48962-1
SDG: Lea Co, NM

Method	Method Description	Protocol	Laboratory
8021B	Volatile Organic Compounds (GC)	SW846	EET MID
Total BTEX	Total BTEX Calculation	TAL SOP	EET MID
8015 NM	Diesel Range Organics (DRO) (GC)	SW846	EET MID
8015B NM	Diesel Range Organics (DRO) (GC)	SW846	EET MID
300.0	Anions, Ion Chromatography	EPA	EET MID
5035	Closed System Purge and Trap	SW846	EET MID
8015NM Prep	Microextraction	SW846	EET MID
DI Leach	Deionized Water Leaching Procedure	ASTM	EET MID

Protocol References:

ASTM = ASTM International

EPA = US Environmental Protection Agency

SW846 = "Test Methods For Evaluating Solid Waste, Physical/Chemical Methods", Third Edition, November 1986 And Its Updates.

TAL SOP = TestAmerica Laboratories, Standard Operating Procedure

Laboratory References:

EET MID = Eurofins Midland, 1211 W. Florida Ave, Midland, TX 79701, TEL (432)704-5440

Sample Summary

Client: Carmona Resources
Project/Site: Rhodes Federal Unit #224 (08.16.2013)

Job ID: 880-48962-1
SDG: Lea Co, NM

Lab Sample ID	Client Sample ID	Matrix	Collected	Received
880-48962-1	H-1 (0-1')	Solid	09/25/24 00:00	09/25/24 13:40
880-48962-2	H-2 (0-1')	Solid	09/25/24 00:00	09/25/24 13:40
880-48962-3	H-3 (0-1')	Solid	09/25/24 00:00	09/25/24 13:40
880-48962-4	H-4 (0-1')	Solid	09/25/24 00:00	09/25/24 13:40
880-48962-5	S-1 (0-1.0')	Solid	09/25/24 00:00	09/25/24 13:40
880-48962-6	S-1 (1.5')	Solid	09/25/24 00:00	09/25/24 13:40
880-48962-7	S-1 (2.0')	Solid	09/25/24 00:00	09/25/24 13:40
880-48962-8	S-1 (3.0')	Solid	09/25/24 00:00	09/25/24 13:40
880-48962-9	S-2 (0-1.0')	Solid	09/25/24 00:00	09/25/24 13:40
880-48962-10	S-2 (1.5')	Solid	09/25/24 00:00	09/25/24 13:40
880-48962-11	S-2 (2.0')	Solid	09/25/24 00:00	09/25/24 13:40
880-48962-12	S-2 (3.0')	Solid	09/25/24 00:00	09/25/24 13:40

- 1
- 2
- 3
- 4
- 5
- 6
- 7
- 8
- 9
- 10
- 11
- 12
- 13
- 14

- 1
- 2
- 3
- 4
- 5
- 6
- 7
- 8
- 9
- 10
- 11
- 12
- 13
- 14

Chain of Custody



880-48962 Chain of Custody

Page 1 of 2

Project Manager:		Ashlon Thielke		Bill to: (if different)		Laci Luig	
Company Name:		Carmona Resources		Company Name:		Cimarex Energy	
Address:		310 W Wall St Ste 500		Address:		600 N Mainfield St, Suite 600	
City, State ZIP:		Midland, TX 79701		City, State ZIP:		Midland, TX 79701	
Phone:		432-813-8988		Email:		laci.luig@cederra.com ashlon.thielke@cederra.com	
Project Name: RHODES FEDERAL UNIT #224 (08.16.2013)				Turn Around		ANALYSIS REQUEST	
Project Number:		2523		<input checked="" type="checkbox"/> Routine <input type="checkbox"/> Rush		Pres. Code	
Project Location:		Lea Co. NM		Due Date:		Normal	
Sampler's Name:		Cade					
PO #:							
SAMPLE RECEIPT		Temp Blank:		Yes No		Wet Ice: Yes No	
Received In tact:		Yes No		Thermometer ID:			
Cooler Custody Seals:		Yes No		Correction Factor:			
Sample Custody Seals:		Yes No		Temperature Reading:			
Total Containers:		Yes No		Corrected Temperature:			
Sample Identification		Date		Time		Soil	
H-1 (0-1')		9/25/2024				Grab/ 1	
H-2 (0-1')		9/25/2024				Grab/ 1	
H-3 (0-1')		9/25/2024				Grab/ 1	
H-4 (0-1')		9/25/2024				Grab/ 1	
S-1 (0-1.0')		9/25/2024				Grab/ 1	
S-1 (1.5')		9/25/2024				Grab/ 1	
S-1 (2.0')		9/25/2024				Grab/ 1	
S-1 (3.0')		9/25/2024				Grab/ 1	
S-2 (0-1.0')		9/25/2024				Grab/ 1	
S-2 (1.5')		9/25/2024				Grab/ 1	
Comments:							
Relinquished by: (Signature)		Date/Time		Received by: (Signature)		Date/Time	
Laci Luig		09-25-2024		[Signature]		9/25/2024	

Work Order Comments

Program: USTPST ☐ PRP ☐ Brownfields ☐ RC ☐ Inertland

State of Project:

Reporting Level II ☐ Level III ☐ ST/UST ☐ RRP ☐ Level IV ☐

Deliverables: EDD ☐ ADAPT ☐ Other:

Preservative Codes

None: NO DI Water: H₂O

Cool: Cool MeOH: Me

HCL: HC HNO₃: HN

H₂SO₄: H₂ NaOH: Na

H₃PO₄: HP

NaHSO₄: NABIS

Na₂S₂O₃: NaSO₃

Zn Acetate+NaOH: Zn

NaOH+Ascorbic Acid: SAPC

Sample Comments

Chain of Custody

Work Order No: 48962

Page 2 of 2[illegible]

Login Sample Receipt Checklist

Client: Carmona Resources

Job Number: 880-48962-1

SDG Number: Lea Co, NM

Login Number: 48962

List Source: Eurofins Midland

List Number: 1

Creator: Vasquez, Julisa

Question	Answer	Comment
The cooler's custody seal, if present, is intact.	N/A	
Sample custody seals, if present, are intact.	N/A	
The cooler or samples do not appear to have been compromised or tampered with.	True	
Samples were received on ice.	True	
Cooler Temperature is acceptable.	True	
Cooler Temperature is recorded.	True	
COC is present.	True	
COC is filled out in ink and legible.	True	
COC is filled out with all pertinent information.	True	
Is the Field Sampler's name present on COC?	True	
There are no discrepancies between the containers received and the COC.	True	
Samples are received within Holding Time (excluding tests with immediate HTs)	True	
Sample containers have legible labels.	True	
Containers are not broken or leaking.	True	
Sample collection date/times are provided.	True	
Appropriate sample containers are used.	True	
Sample bottles are completely filled.	True	
Sample Preservation Verified.	N/A	
There is sufficient vol. for all requested analyses, incl. any requested MS/MSDs	True	
Containers requiring zero headspace have no headspace or bubble is <6mm (1/4").	N/A	

Sante Fe Main Office
Phone: (505) 476-3441

General Information
Phone: (505) 629-6116

Online Phone Directory
<https://www.emnrd.nm.gov/ocd/contact-us>

State of New Mexico
Energy, Minerals and Natural Resources
Oil Conservation Division
1220 S. St Francis Dr.
Santa Fe, NM 87505

QUESTIONS

Action 406943

QUESTIONS

Operator: CIMAREX ENERGY CO. OF COLORADO 6001 Deauville Blvd Midland, TX 79706	OGRID: 162683
	Action Number: 406943
	Action Type: [C-141] Revegetation Report C-141 (C-141-v-Revegetation)

QUESTIONS

Prerequisites	
Incident ID (n#)	nSAD1326255401
Incident Name	NSAD1326255401 RHODES FEDERAL UNIT #224 @ 30-025-32967
Incident Type	Oil Release
Incident Status	Re-vegetation Report Received
Incident Well	[30-025-32967] RHODES FEDERAL UNIT #224

Location of Release Source	
<i>Please answer all the questions in this group.</i>	
Site Name	Rhodes Federal Unit #224
Date Release Discovered	08/16/2013
Surface Owner	Private

Incident Details	
<i>Please answer all the questions in this group.</i>	
Incident Type	Oil Release
Did this release result in a fire or is the result of a fire	No
Did this release result in any injuries	No
Has this release reached or does it have a reasonable probability of reaching a watercourse	No
Has this release endangered or does it have a reasonable probability of endangering public health	No
Has this release substantially damaged or will it substantially damage property or the environment	No
Is this release of a volume that is or may with reasonable probability be detrimental to fresh water	No

Nature and Volume of Release	
<i>Material(s) released, please answer all that apply below. Any calculations or specific justifications for the volumes provided should be attached to the follow-up C-141 submission.</i>	
Crude Oil Released (bbls) Details	Cause: Human Error Valve Crude Oil Released: 28 BBL Recovered: 12 BBL Lost: 16 BBL.
Produced Water Released (bbls) Details	Not answered.
Is the concentration of chloride in the produced water >10,000 mg/l	Not answered.
Condensate Released (bbls) Details	Not answered.
Natural Gas Vented (Mcf) Details	Not answered.
Natural Gas Flared (Mcf) Details	Not answered.
Other Released Details	Not answered.
Are there additional details for the questions above (i.e. any answer containing Other, Specify, Unknown, and/or Fire, or any negative lost amounts)	Not answered.

Sante Fe Main Office
Phone: (505) 476-3441

General Information
Phone: (505) 629-6116

Online Phone Directory
<https://www.emnrd.nm.gov/ocd/contact-us>

State of New Mexico
Energy, Minerals and Natural Resources
Oil Conservation Division
1220 S. St Francis Dr.
Santa Fe, NM 87505

QUESTIONS, Page 2

Action 406943

QUESTIONS (continued)

Operator: CIMAREX ENERGY CO. OF COLORADO 6001 Deauville Blvd Midland, TX 79706	OGRID: 162683
	Action Number: 406943
	Action Type: [C-141] Revegetation Report C-141 (C-141-v-Revegetation)

QUESTIONS

Nature and Volume of Release (continued)	
Is this a gas only submission (i.e. only significant Mcf values reported)	No, according to supplied volumes this does not appear to be a "gas only" report.
Was this a major release as defined by Subsection A of 19.15.29.7 NMAC	Yes
Reasons why this would be considered a submission for a notification of a major release	From paragraph A. "Major release" determine using: (1) an unauthorized release of a volume, excluding gases, of 25 barrels or more.
With the implementation of the 19.15.27 NMAC (05/25/2021), venting and/or flaring of natural gas (i.e. gas only) are to be submitted on the C-129 form.	

Initial Response

The responsible party must undertake the following actions immediately unless they could create a safety hazard that would result in injury.

The source of the release has been stopped	True
The impacted area has been secured to protect human health and the environment	True
Released materials have been contained via the use of berms or dikes, absorbent pads, or other containment devices	True
All free liquids and recoverable materials have been removed and managed appropriately	True
If all the actions described above have not been undertaken, explain why	Not answered.

Per Paragraph (4) of Subsection B of 19.15.29.8 NMAC the responsible party may commence remediation immediately after discovery of a release. If remediation has begun, please prepare and attach a narrative of actions to date in the follow-up C-141 submission. If remedial efforts have been successfully completed or if the release occurred within a lined containment area (see Subparagraph (a) of Paragraph (5) of Subsection A of 19.15.29.11 NMAC), please prepare and attach all information needed for closure evaluation in the follow-up C-141 submission.

I hereby certify that the information given above is true and complete to the best of my knowledge and understand that pursuant to OCD rules and regulations all operators are required to report and/or file certain release notifications and perform corrective actions for releases which may endanger public health or the environment. The acceptance of a C-141 report by the OCD does not relieve the operator of liability should their operations have failed to adequately investigate and remediate contamination that pose a threat to groundwater, surface water, human health or the environment. In addition, OCD acceptance of a C-141 report does not relieve the operator of responsibility for compliance with any other federal, state, or local laws and/or regulations.

I hereby agree and sign off to the above statement	Name: Laci Luig Title: ES&H Specialist Email: DL_PermianEnvironmental@coterra.com Date: 11/27/2024
--	---

Sante Fe Main Office
Phone: (505) 476-3441

General Information
Phone: (505) 629-6116

Online Phone Directory
<https://www.emnrd.nm.gov/ocd/contact-us>

State of New Mexico
Energy, Minerals and Natural Resources
Oil Conservation Division
1220 S. St Francis Dr.
Santa Fe, NM 87505

QUESTIONS, Page 3

Action 406943

QUESTIONS (continued)

Operator: CIMAREX ENERGY CO. OF COLORADO 6001 Deauville Blvd Midland, TX 79706	OGRID: 162683
	Action Number: 406943
	Action Type: [C-141] Revegetation Report C-141 (C-141-v-Revegetation)

QUESTIONS

Site Characterization	
<i>Please answer all the questions in this group (only required when seeking remediation plan approval and beyond). This information must be provided to the appropriate district office no later than 90 days after the release discovery date.</i>	
What is the shallowest depth to groundwater beneath the area affected by the release in feet below ground surface (ft bgs)	Between 51 and 75 (ft.)
What method was used to determine the depth to ground water	U.S. Geological Survey
Did this release impact groundwater or surface water	No
What is the minimum distance, between the closest lateral extents of the release and the following surface areas:	
A continuously flowing watercourse or any other significant watercourse	Greater than 5 (mi.)
Any lakebed, sinkhole, or playa lake (measured from the ordinary high-water mark)	Greater than 5 (mi.)
An occupied permanent residence, school, hospital, institution, or church	Between 1 and 5 (mi.)
A spring or a private domestic fresh water well used by less than five households for domestic or stock watering purposes	Greater than 5 (mi.)
Any other fresh water well or spring	Between 1 and 5 (mi.)
Incorporated municipal boundaries or a defined municipal fresh water well field	Greater than 5 (mi.)
A wetland	Between 1 and 5 (mi.)
A subsurface mine	Greater than 5 (mi.)
An (non-karst) unstable area	Greater than 5 (mi.)
Categorize the risk of this well / site being in a karst geology	Low
A 100-year floodplain	Greater than 5 (mi.)
Did the release impact areas not on an exploration, development, production, or storage site	No

Remediation Plan	
<i>Please answer all the questions that apply or are indicated. This information must be provided to the appropriate district office no later than 90 days after the release discovery date.</i>	
Requesting a remediation plan approval with this submission	Yes
<i>Attach a comprehensive report demonstrating the lateral and vertical extents of soil contamination associated with the release have been determined, pursuant to 19.15.29.11 NMAC and 19.15.29.13 NMAC.</i>	
Have the lateral and vertical extents of contamination been fully delineated	Yes
Was this release entirely contained within a lined containment area	No
Soil Contamination Sampling: (Provide the highest observable value for each, in milligrams per kilograms.)	
Chloride (EPA 300.0 or SM4500 Cl B)	5.7
TPH (GRO+DRO+MRO) (EPA SW-846 Method 8015M)	53.1
GRO+DRO (EPA SW-846 Method 8015M)	53.1
BTEX (EPA SW-846 Method 8021B or 8260B)	0
Benzene (EPA SW-846 Method 8021B or 8260B)	0
<i>Per Subsection B of 19.15.29.11 NMAC unless the site characterization report includes completed efforts at remediation, the report must include a proposed remediation plan in accordance with 19.15.29.12 NMAC, which includes the anticipated timelines for beginning and completing the remediation.</i>	
On what estimated date will the remediation commence	08/16/2013
On what date will (or did) the final sampling or liner inspection occur	09/25/2024
On what date will (or was) the remediation complete(d)	08/16/2013
What is the estimated surface area (in square feet) that will be reclaimed	0
What is the estimated volume (in cubic yards) that will be reclaimed	0
What is the estimated surface area (in square feet) that will be remediated	0
What is the estimated volume (in cubic yards) that will be remediated	0
<i>These estimated dates and measurements are recognized to be the best guess or calculation at the time of submission and may (be) change(d) over time as more remediation efforts are completed.</i>	
<i>The OCD recognizes that proposed remediation measures may have to be minimally adjusted in accordance with the physical realities encountered during remediation. If the responsible party has any need to significantly deviate from the remediation plan proposed, then it should consult with the division to determine if another remediation plan submission is required.</i>	

Sante Fe Main Office
Phone: (505) 476-3441

General Information
Phone: (505) 629-6116

Online Phone Directory
<https://www.emnrd.nm.gov/oecd/contact-us>

State of New Mexico
Energy, Minerals and Natural Resources
Oil Conservation Division
1220 S. St Francis Dr.
Santa Fe, NM 87505

QUESTIONS, Page 4

Action 406943

QUESTIONS (continued)

Operator: CIMAREX ENERGY CO. OF COLORADO 6001 Deauville Blvd Midland, TX 79706	OGRID: 162683
	Action Number: 406943
	Action Type: [C-141] Revegetation Report C-141 (C-141-v-Revegetation)

QUESTIONS

Remediation Plan (continued)	
<i>Please answer all the questions that apply or are indicated. This information must be provided to the appropriate district office no later than 90 days after the release discovery date.</i>	
This remediation will (or is expected to) utilize the following processes to remediate / reduce contaminants:	
(Select all answers below that apply.)	
(Ex Situ) Excavation and off-site disposal (i.e. dig and haul, hydrovac, etc.)	Not answered.
(Ex Situ) Excavation and on-site remediation (i.e. On-Site Land Farms)	Not answered.
(In Situ) Soil Vapor Extraction	Not answered.
(In Situ) Chemical processing (i.e. Soil Shredding, Potassium Permanganate, etc.)	Not answered.
(In Situ) Biological processing (i.e. Microbes / Fertilizer, etc.)	Not answered.
(In Situ) Physical processing (i.e. Soil Washing, Gypsum, Disking, etc.)	Not answered.
Ground Water Abatement pursuant to 19.15.30 NMAC	Not answered.
OTHER (Non-listed remedial process)	Yes
Other Non-listed Remedial Process. Please specify	This spill occurred during reclamation and P/A activities. Spill was believed to be closed until recently discovered in archive. Recent site assessment shows that spill was remediated as is in compliance with current 2024 NMOCD 19.15.29.12-13 standards. Soil analysis and vegetation cover is within acceptable limits. Reinspection on 11/19/2024 of vegetation onsite.
<i>Per Subsection B of 19.15.29.11 NMAC unless the site characterization report includes completed efforts at remediation, the report must include a proposed remediation plan in accordance with 19.15.29.12 NMAC, which includes the anticipated timelines for beginning and completing the remediation.</i>	
I hereby certify that the information given above is true and complete to the best of my knowledge and understand that pursuant to OCD rules and regulations all operators are required to report and/or file certain release notifications and perform corrective actions for releases which may endanger public health or the environment. The acceptance of a C-141 report by the OCD does not relieve the operator of liability should their operations have failed to adequately investigate and remediate contamination that pose a threat to groundwater, surface water, human health or the environment. In addition, OCD acceptance of a C-141 report does not relieve the operator of responsibility for compliance with any other federal, state, or local laws and/or regulations.	
I hereby agree and sign off to the above statement	Name: Laci Luig Title: ES&H Specialist Email: DL_PermianEnvironmental@coterra.com Date: 11/27/2024
<i>The OCD recognizes that proposed remediation measures may have to be minimally adjusted in accordance with the physical realities encountered during remediation. If the responsible party has any need to significantly deviate from the remediation plan proposed, then it should consult with the division to determine if another remediation plan submission is required.</i>	

Sante Fe Main Office
Phone: (505) 476-3441

General Information
Phone: (505) 629-6116

Online Phone Directory
<https://www.emnrd.nm.gov/ocd/contact-us>

State of New Mexico
Energy, Minerals and Natural Resources
Oil Conservation Division
1220 S. St Francis Dr.
Santa Fe, NM 87505

QUESTIONS, Page 5

Action 406943

QUESTIONS (continued)

Operator: CIMAREX ENERGY CO. OF COLORADO 6001 Deauville Blvd Midland, TX 79706	OGRID: 162683
	Action Number: 406943
	Action Type: [C-141] Revegetation Report C-141 (C-141-v-Revegetation)

QUESTIONS

Deferral Requests Only	
Only answer the questions in this group if seeking a deferral upon approval this submission. Each of the following items must be confirmed as part of any request for deferral of remediation.	
Requesting a deferral of the remediation closure due date with the approval of this submission	No

Sante Fe Main Office
Phone: (505) 476-3441

General Information
Phone: (505) 629-6116

Online Phone Directory
<https://www.emnrd.nm.gov/ocd/contact-us>

State of New Mexico
Energy, Minerals and Natural Resources
Oil Conservation Division
1220 S. St Francis Dr.
Santa Fe, NM 87505

QUESTIONS, Page 6

Action 406943

QUESTIONS (continued)

Operator: CIMAREX ENERGY CO. OF COLORADO 6001 Deauville Blvd Midland, TX 79706	OGRID: 162683
	Action Number: 406943
	Action Type: [C-141] Revegetation Report C-141 (C-141-v-Revegetation)

QUESTIONS

Sampling Event Information	
Last sampling notification (C-141N) recorded	385841
Sampling date pursuant to Subparagraph (a) of Paragraph (1) of Subsection D of 19.15.29.12 NMAC	09/25/2024
What was the (estimated) number of samples that were to be gathered	6
What was the sampling surface area in square feet	1700

Remediation Closure Request

Only answer the questions in this group if seeking remediation closure for this release because all remediation steps have been completed.

Requesting a remediation closure approval with this submission	Yes
Have the lateral and vertical extents of contamination been fully delineated	Yes
Was this release entirely contained within a lined containment area	No
All areas reasonably needed for production or subsequent drilling operations have been stabilized, returned to the sites existing grade, and have a soil cover that prevents ponding of water, minimizing dust and erosion	Yes
What was the total surface area (in square feet) remediated	0
What was the total volume (cubic yards) remediated	0
All areas not reasonably needed for production or subsequent drilling operations have been reclaimed to contain a minimum of four feet of non-waste contain earthen material with concentrations less than 600 mg/kg chlorides, 100 mg/kg TPH, 50 mg/kg BTEX, and 10 mg/kg Benzene	Yes
What was the total surface area (in square feet) reclaimed	0
What was the total volume (in cubic yards) reclaimed	0
Summarize any additional remediation activities not included by answers (above)	This spill occurred during reclamation and P/A activities. Spill was believed to be closed until recently discovered in archive. Recent site assessment shows that spill was remediated as is in compliance with current 2024 NMOCD 19.15.29.12-13 standards. Soil analysis and vegetation cover is within acceptable limits. Reinspection on 11/19/2024 of vegetation onsite.

The responsible party must attach information demonstrating they have complied with all applicable closure requirements and any conditions or directives of the OCD. This demonstration should be in the form of a comprehensive report (in .pdf format) including a scaled site map, sampling diagrams, relevant field notes, photographs of any excavation prior to backfilling, laboratory data including chain of custody documents of final sampling, and a narrative of the remedial activities. Refer to 19.15.29.12 NMAC.

I hereby certify that the information given above is true and complete to the best of my knowledge and understand that pursuant to OCD rules and regulations all operators are required to report and/or file certain release notifications and perform corrective actions for releases which may endanger public health or the environment. The acceptance of a C-141 report by the OCD does not relieve the operator of liability should their operations have failed to adequately investigate and remediate contamination that pose a threat to groundwater, surface water, human health or the environment. In addition, OCD acceptance of a C-141 report does not relieve the operator of responsibility for compliance with any other federal, state, or local laws and/or regulations. The responsible party acknowledges they must substantially restore, reclaim, and re-vegetate the impacted surface area to the conditions that existed prior to the release or their final land use in accordance with 19.15.29.13 NMAC including notification to the OCD when reclamation and re-vegetation are complete.

I hereby agree and sign off to the above statement	Name: Laci Luig Title: ES&H Specialist Email: DL_PermianEnvironmental@coterra.com Date: 11/27/2024
--	---

Sante Fe Main Office
Phone: (505) 476-3441

General Information
Phone: (505) 629-6116

Online Phone Directory
<https://www.emnrd.nm.gov/ocd/contact-us>

State of New Mexico
Energy, Minerals and Natural Resources
Oil Conservation Division
1220 S. St Francis Dr.
Santa Fe, NM 87505

QUESTIONS, Page 7

Action 406943

QUESTIONS (continued)

Operator: CIMAREX ENERGY CO. OF COLORADO 6001 Deauville Blvd Midland, TX 79706	OGRID: 162683
	Action Number: 406943
	Action Type: [C-141] Revegetation Report C-141 (C-141-v-Revegetation)

QUESTIONS

Reclamation Report	
<i>Only answer the questions in this group if all reclamation steps have been completed.</i>	
Requesting a reclamation approval with this submission	Yes
What was the total reclamation surface area (in square feet) for this site	0
What was the total volume of replacement material (in cubic yards) for this site	0
<i>Per Paragraph (1) of Subsection D of 19.15.29.13 NMAC the reclamation must contain a minimum of four feet of non-waste containing, uncontaminated, earthen material with chloride concentrations less than 600 mg/kg as analyzed by EPA Method 300.0, or other test methods approved by the division. The soil cover must include a top layer, which is either the background thickness of topsoil or one foot of suitable material to establish vegetation at the site, whichever is greater.</i>	
Is the soil top layer complete and is it suitable material to establish vegetation	Yes
On what (estimated) date will (or was) the reseeding commence(d)	08/16/2013
Summarize any additional reclamation activities not included by answers (above)	This spill occurred during reclamation and P/A activities. Spill was believed to be closed until recently discovered in archive. Recent site assessment shows that spill was remediated as is in compliance with current 2024 NMOCD 19.15.29.12-13 standards. Soil analysis and vegetation cover is within acceptable limits. Site was visited on 09.13.2024, 09.25.2024, & 11.19.2024 for site inspections and sampling. Photographs of site visits can be found in Appendix B of the closure report.
<i>The responsible party must attach information demonstrating they have complied with all applicable reclamation requirements and any conditions or directives of the OCD. This demonstration should be in the form of attachments (in .pdf format) including a scaled site map, any proposed reseeding plans or relevant field notes, photographs of reclaimed area, and a narrative of the reclamation activities. Refer to 19.15.29.13 NMAC.</i>	
I hereby certify that the information given above is true and complete to the best of my knowledge and understand that pursuant to OCD rules and regulations all operators are required to report and/or file certain release notifications and perform corrective actions for releases which may endanger public health or the environment. The acceptance of a C-141 report by the OCD does not relieve the operator of liability should their operations have failed to adequately investigate and remediate contamination that pose a threat to groundwater, surface water, human health or the environment. In addition, OCD acceptance of a C-141 report does not relieve the operator of responsibility for compliance with any other federal, state, or local laws and/or regulations. The responsible party acknowledges they must substantially restore, reclaim, and re-vegetate the impacted surface area to the conditions that existed prior to the release or their final land use in accordance with 19.15.29.13 NMAC including notification to the OCD when reclamation and re-vegetation are complete.	
I hereby agree and sign off to the above statement	Name: Laci Luig Title: ES&H Specialist Email: DL_PermianEnvironmental@coterra.com Date: 11/27/2024

Sante Fe Main Office
Phone: (505) 476-3441

General Information
Phone: (505) 629-6116

Online Phone Directory
<https://www.emnrd.nm.gov/ocd/contact-us>

State of New Mexico
Energy, Minerals and Natural Resources
Oil Conservation Division
1220 S. St Francis Dr.
Santa Fe, NM 87505

QUESTIONS, Page 8

Action 406943

QUESTIONS (continued)

Operator: CIMAREX ENERGY CO. OF COLORADO 6001 Deauville Blvd Midland, TX 79706	OGRID: 162683
	Action Number: 406943
	Action Type: [C-141] Revegetation Report C-141 (C-141-v-Revegetation)

QUESTIONS

Revegetation Report	
<i>Only answer the questions in this group if all surface restoration, reclamation and re-vegetation obligations have been satisfied.</i>	
Requesting a restoration complete approval with this submission	Yes
What was the total revegetation surface area (in square feet) for this site	48000
<i>Per Paragraph (2) of Subsection D of 19.15.29.13 NMAC the responsible party must reseed disturbed area in the first favorable growing season following closure of the site.</i>	
On what date did the reseeded commence	08/16/2013
On what date was the vegetative cover inspected	11/19/2024
What was the life form ratio compared to pre-disturbance levels	80
What was the total percent plant cover compared to pre-disturbance levels	85
Summarize any additional revegetation activities not included by answers (above)	Soil analysis and vegetation cover is within acceptable limits. Site was visited on 09.13.2024, 09.25.2024, & 11.19.2024 for site inspections and sampling. Photographs of site visits can be found in Appendix B of the closure report. Comparing to the surrounding environment, it is hard to tell a well pad was ever onsite.
<i>The responsible party must attach information demonstrating they have complied with all applicable re-vegetation requirements and any conditions or directives of the OCD. This demonstration should be in the form of attachments (in .pdf format) including a scaled site map, any life form ratio and percent plant cover sampling diagrams or other relevant field notes, photographs of re-vegetated areas, and a narrative of the re-vegetation activities. Refer to 19.15.29.13 NMAC.</i>	
I hereby certify that the information given above is true and complete to the best of my knowledge and understand that pursuant to OCD rules and regulations all operators are required to report and/or file certain release notifications and perform corrective actions for releases which may endanger public health or the environment. The acceptance of a C-141 report by the OCD does not relieve the operator of liability should their operations have failed to adequately investigate and remediate contamination that pose a threat to groundwater, surface water, human health or the environment. In addition, OCD acceptance of a C-141 report does not relieve the operator of responsibility for compliance with any other federal, state, or local laws and/or regulations. The responsible party acknowledges they must substantially restore, reclaim, and re-vegetate the impacted surface area to the conditions that existed prior to the release or their final land use in accordance with 19.15.29.13 NMAC including notification to the OCD when reclamation and re-vegetation are complete.	
I hereby agree and sign off to the above statement	Name: Laci Luig Title: ES&H Specialist Email: DL_PermianEnvironmental@coterra.com Date: 11/27/2024
<i>Per Paragraph (4) of Subsection (D) of 19.15.29.13 NMAC for any major or minor release containing liquids, the responsible party must notify the division when reclamation and re-vegetation are complete.</i>	

Sante Fe Main Office
Phone: (505) 476-3441

General Information
Phone: (505) 629-6116

Online Phone Directory
<https://www.emnrd.nm.gov/ocd/contact-us>

State of New Mexico
Energy, Minerals and Natural Resources
Oil Conservation Division
1220 S. St Francis Dr.
Santa Fe, NM 87505

CONDITIONS

Action 406943

CONDITIONS

Operator: CIMAREX ENERGY CO. OF COLORADO 6001 Deauville Blvd Midland, TX 79706	OGRID: 162683
	Action Number: 406943
	Action Type: [C-141] Revegetation Report C-141 (C-141-v-Revegetation)

CONDITIONS

Created By	Condition	Condition Date
bhall	Revegetation report approved	12/11/2024