



PREPARED BY:
PIMA ENVIRONMENTAL SERVICES, LLC

PREPARED FOR:
Spur Energy

Aid North 14 13 State Com Battery

Incident ID nAPP2428740038

Liner Inspection and Closure Report

November 17, 2024



Pima Environmental Services
5614 N. Lovington Highway
Hobbs, NM 88240
575-964-7740

November 17, 2024

NMOCD District 2
811 S. First St
Artesia, NM, 88210

RE: Liner Inspection and Closure Report
Aid North 14 13 State Com Battery
API No. 30-015-54076
GPS: Latitude 32.83938 Longitude -104.14534
UL- B, Section 14, Township 17S, Range 28E
NMOCD Reference No. NAPP2428740038

Spur Energy Partners (Spur) has contracted Pima Environmental Services, LLC (Pima) to perform a liner inspection and prepare this closure report for the release of produced water that happened on the Aid North 14 13 State Com Battery (Aid). An initial C-141 was submitted on October 21, 2024. This incident was assigned Incident ID NAPP2428740038, by the New Mexico Oil Conservation Division (NMOCD).

Site Information and Site Characterization

Aid is located approximately 8 miles northeast of Riverside, NM. This spill site is in Unit B, Section 14, Township 17S, Range 28E, Latitude 32.83938 Longitude -104.14534, Eddy County, NM. A Location Map can be found in Figure 1.

Based on the well water data from the New Mexico Office of the State Engineer, the depth to the nearest groundwater in this vicinity measures 58 feet below grade surface (BGS), positioned roughly 0.34 miles away from the Aid, drilled on September 28, 2015. Conversely, as per the United States Geological Survey well water data, the nearest groundwater depth in this region is recorded at 78.55 feet BGS, situated approximately 1.83 miles away from the Aid, with the last gauge conducted on January 13, 1999. For detailed references to water surveys and the precise locations of water wells, please refer to Appendix A, inclusive of the relevant maps. Notably, Aid is situated within an area with a low potential for karst, as illustrated in Figure 3. Additionally, a comprehensive Topographic Map is available for reference in Figure 2.

Release Information

NAPP2428740038: On October 13, 2024, high line pressure caused a seal to leak, releasing approximately 30 barrels of produced water into a lined containment area. Immediate action was taken to stop the release, and a vacuum truck was dispatched to the site, successfully recovering all 30 barrels of produced water. All materials were contained within the 5,000-square-foot lined containment area.

A Site Map can be found in Figure 4.

Site Assessment and Liner Inspection

On November 6, 2024, Spur personnel submitted a notification for a liner inspection, adhering to the necessary 48-hour notice period. The details of the 48-hour notification can be referenced in Appendix C.

On November 11, 2024, Pima personnel arrived at the Aid site to carry out remediation activities within the lined containment area. A power washing crew, along with a vacuum truck, was deployed to clean the containment. The vacuum truck successfully recovered the residual water.

On November 11, 2024, following remediation activities, Pima Environmental conducted a thorough inspection of the approximately 5,000-square-foot lined containment area. The inspection confirmed that the system remained intact and successfully retained all fluids, verifying the liner's full functionality and preventing any environmental impact. A detailed report, including photographic evidence, is provided in Appendices C and D.

Closure Request

After careful review, Pima requests that this incident NAPP2428740038 be closed. Spur has complied with the applicable closure requirements.

For questions or additional information, please feel free to contact:

Spur Energy – Katherine Purvis at 575-441-8619 or katherine.purvis@spurenergy.com

Pima Environmental Services – Sebastian Orozco at 619-721-4813 or Sebastian@pimaoil.com.

Attachments

Figures:

- 1- Location Map
- 2- Topographic Map
- 3- Karst Map
- 4- Site Map

Appendices:

Appendix A- Referenced Water Surveys

Appendix B- Soil Survey, Geological Data, FEMA Flood Map, Wetlands Map

Appendix C- 48 Hour Notification and Liner Inspection Form

Appendix D- Photographic Documentation

Figures:

Figure 1- Location Map

Figure 2- Topographic Map


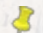
Figure 3- Karst Map

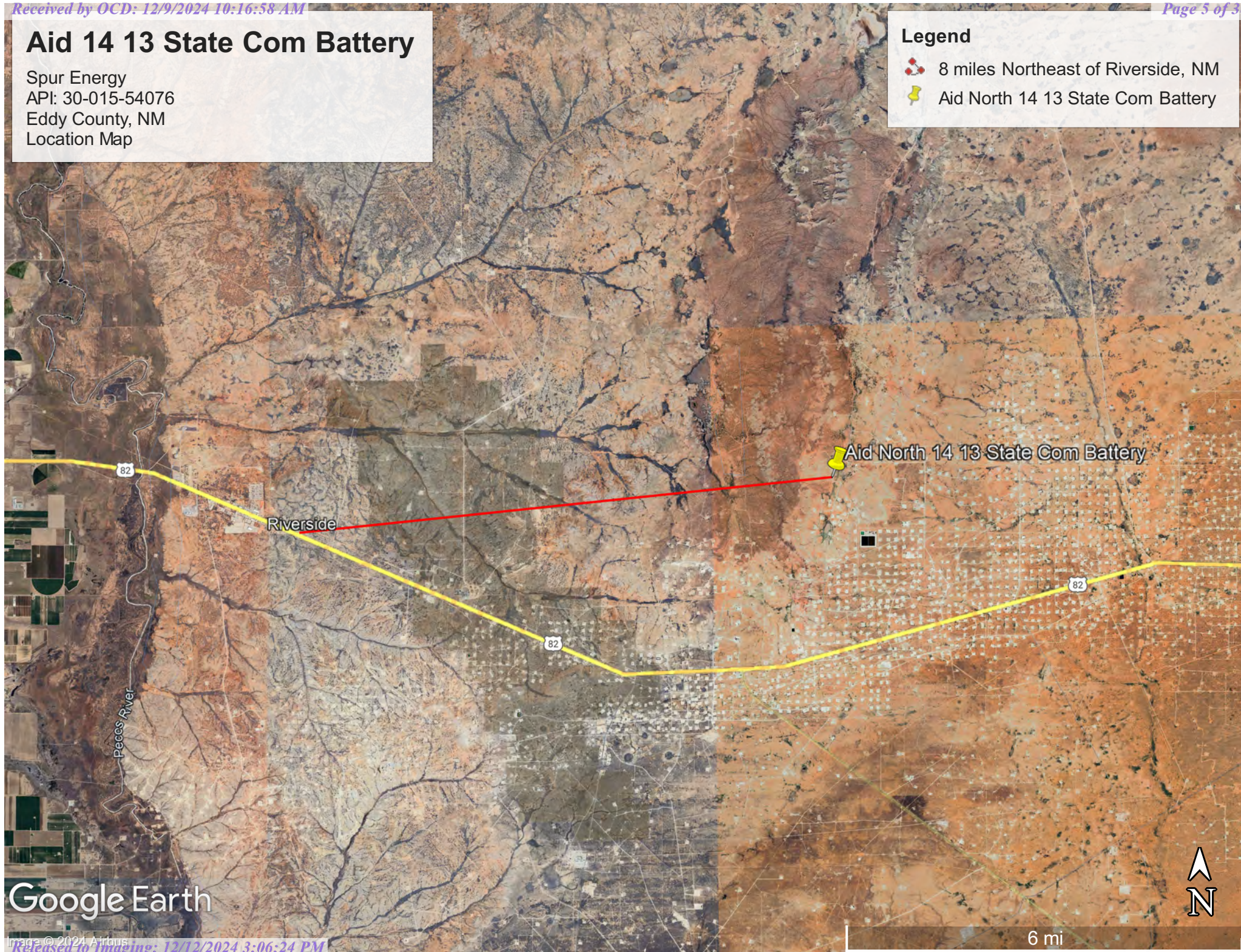
Figure 4- Site Map

Aid 14 13 State Com Battery

Spur Energy
API: 30-015-54076
Eddy County, NM
Location Map

Legend

-  8 miles Northeast of Riverside, NM
-  Aid North 14 13 State Com Battery




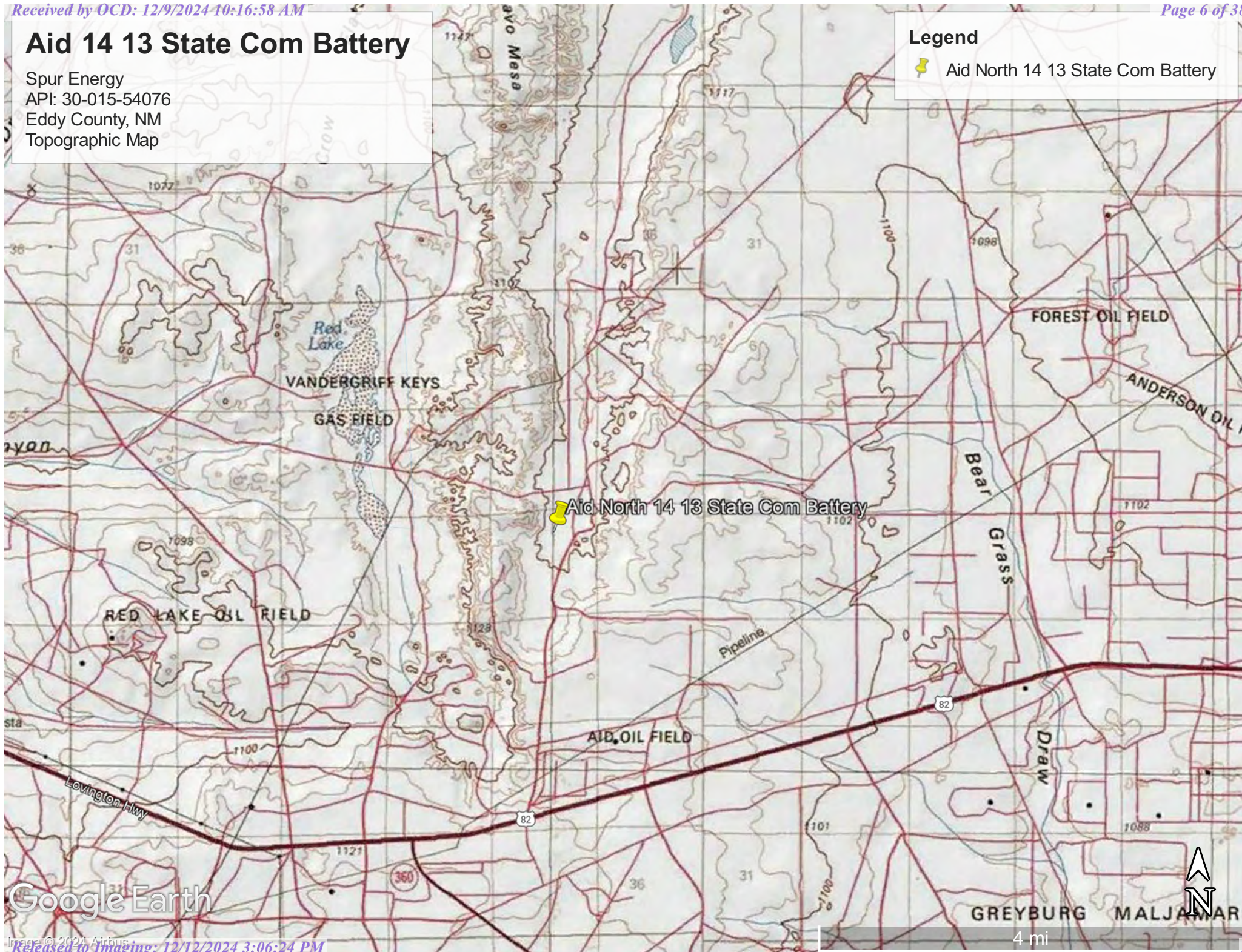
Google Earth

Aid 14 13 State Com Battery

Spur Energy
API: 30-015-54076
Eddy County, NM
Topographic Map

Legend

 Aid North 14 13 State Com Battery



Google Earth

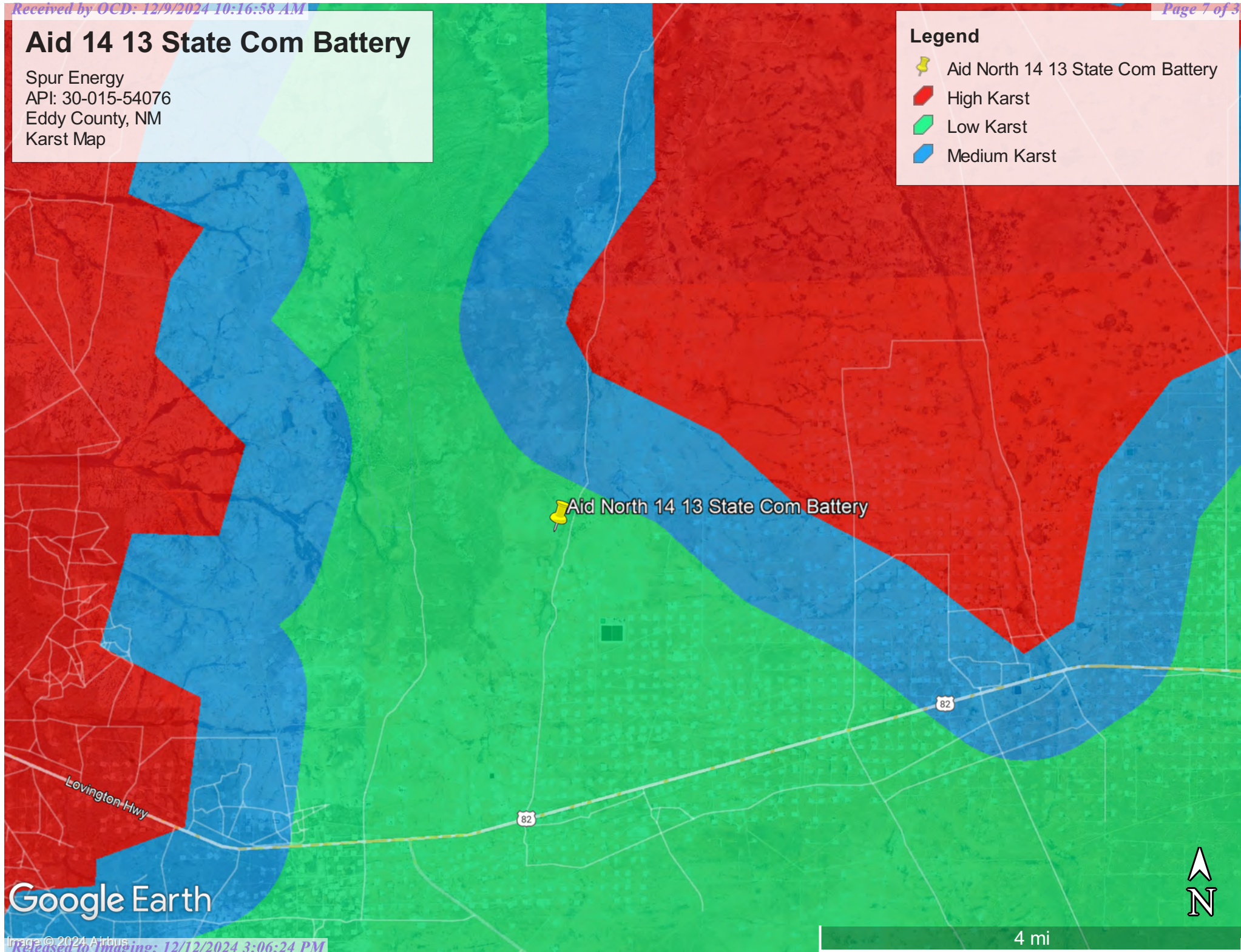
Released to Imaging: 12/12/2024 3:06:24 PM

Aid 14 13 State Com Battery

Spur Energy
API: 30-015-54076
Eddy County, NM
Karst Map

Legend

-  Aid North 14 13 State Com Battery
-  High Karst
-  Low Karst
-  Medium Karst






Google Earth

Aid 14 13 State Com Battery

Spur Energy
API: 30-015-54076
Eddy County, NM
Site Map

Legend

-  Aid North 14 13 State Com Battery
-  Liner Inspection Area

 Aid North 14 13 State Com Battery



Appendix A


Water Surveys:

- OSE
- USGS
- Surface Water Map

Point of Diversion Summary

quarters are 1=NW 2=NE 3=SW 4=SE
quarters are smallest to largest

NAD83 UTM in meters

Well Tag	POD Nbr	Q64	Q16	Q4	Sec	Tw	Rng	X	Y	Map
	RA 12307 POD1	SE	NE	NE	14	17S	28E	580494.9	3633981.3	

* UTM location was derived from PLSS - see Help

Driller License:	1058	Driller Company:	KEY'S DRILLING & PUMP SERVICE
Driller Name:	CLINTON KEY		
Drill Start Date:	2015-09-28	Drill Finish Date:	2015-09-30
Log File Date:	2015-10-07	PCW Rcv Date:	
		Source:	Shallow
Pump Type:		Pipe Discharge Size:	
		Estimated Yield:	30
Casing Size:	4.50	Depth Well:	140
		Depth Water:	58

Water Bearing Stratifications:

Top	Bottom	Description
80	100	Shale/Mudstone/Siltstone
110	120	Sandstone/Gravel/Conglomerate
120	140	Other/Unknown

Casing Perforations:

Top	Bottom
120	140

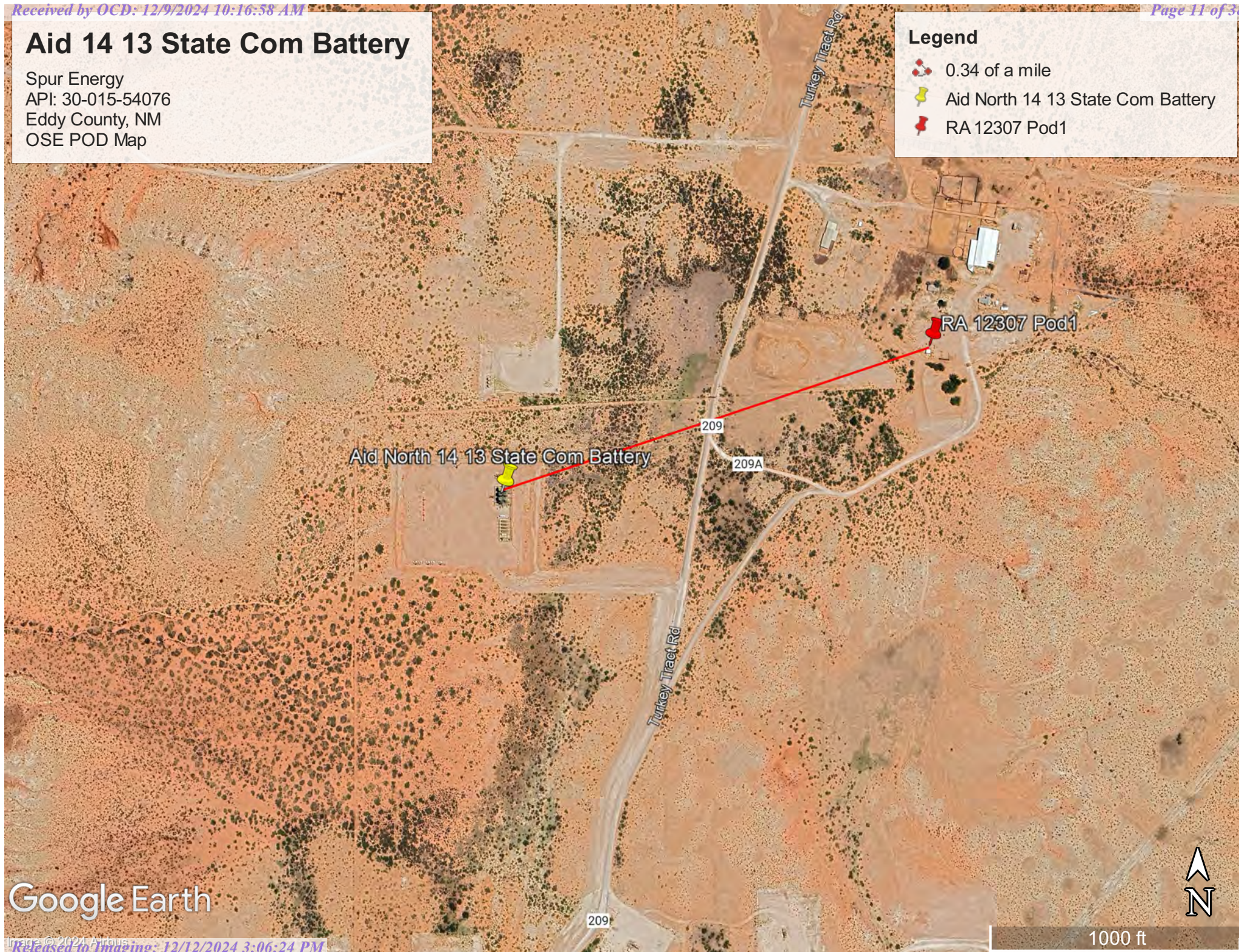
The data is furnished by the NMOSE/ISC and is accepted by the recipient with the expressed understanding that the OSE/ISC make no warranties, expressed or implied, concerning the accuracy, completeness, reliability, usability, or suitability for any particular purpose of the data.

Aid 14 13 State Com Battery

Spur Energy
API: 30-015-54076
Eddy County, NM
OSE POD Map

Legend

- 0.34 of a mile
- Aid North 14 13 State Com Battery
- RA 12307 Pod1



Google Earth



[USGS Home](#)
[Contact USGS](#)
[Search USGS](#)

National Water Information System: Web Interface

USGS Water Resources

Data Category:

Groundwater

Geographic Area:

United States

GO

Click to hide News Bulletins

- Explore the *NEW* [USGS National Water Dashboard](#) interactive map to access real-time water data from over 13,500 stations nationwide.
- How are we doing? We want to hear from you. Take our quick [survey](#) to tell us what you think.

Groundwater levels for the Nation

 Important: [Next Generation Monitoring Location Page](#)

Search Results -- 1 sites found

site_no list =

- 324855104093101

Minimum number of levels = 1

[Save file of selected sites](#) to local disk for future upload

USGS 324855104093101 17S.28E.22.34242

Available data for this site

Groundwater: Field measurements

GO

Eddy County, New Mexico

Hydrologic Unit Code 13060011

Latitude 32°48'55", Longitude 104°09'31" NAD27

Land-surface elevation 3,578 feet above NGVD29

The depth of the well is 95.00 feet below land surface.

This well is completed in the Other aquifers (N9999OTHER) national aquifer.

This well is completed in the Alluvium, Bolson Deposits and Other Surface Deposits (110AVMB) local aquifer.

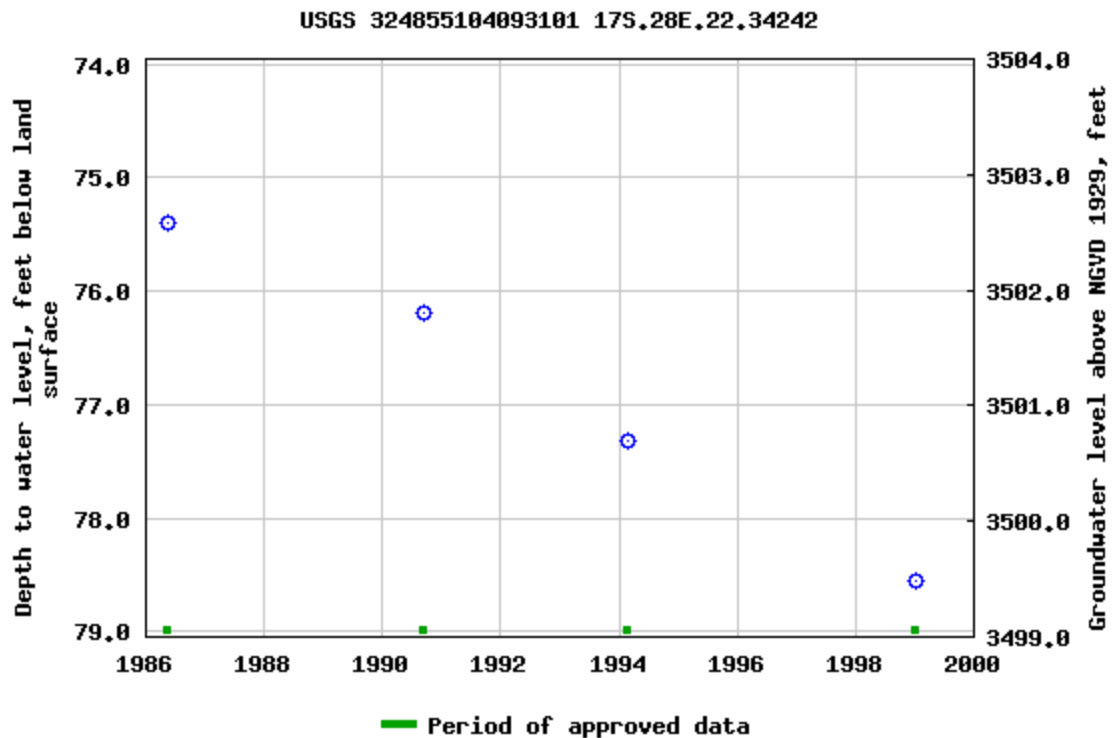
Output formats

[Table of data](#)

[Tab-separated data](#)

[Graph of data](#)

[Reselect period](#)



Breaks in the plot represent a gap of at least one year between field measurements.

[Download a presentation-quality graph](#)

[Questions or Comments](#)

[Help](#)

[Data Tips](#)

[Explanation of terms](#)

[Subscribe for system changes](#)

[Accessibility](#) [FOIA](#) [Privacy](#) [Policies and Notices](#)

[U.S. Department of the Interior](#) | [U.S. Geological Survey](#)

Title: Groundwater for USA: Water Levels

URL: <https://nwis.waterdata.usgs.gov/nwis/gwlevels?>



Page Contact Information: [USGS Water Data Support Team](#)

Page Last Modified: 2024-10-21 17:30:00 EDT

0.68 0.49 nadww02

Aid 14 13 State Com Battery

Spur Energy
API: 30-015-54076
Eddy County, NM
USGS Map

Legend

- 1.83 miles
- Aid North 14 13 State Com Battery
- USGS 324855104093101

Aid North 14 13 State Com Battery

USGS 324855104093101

Google Earth



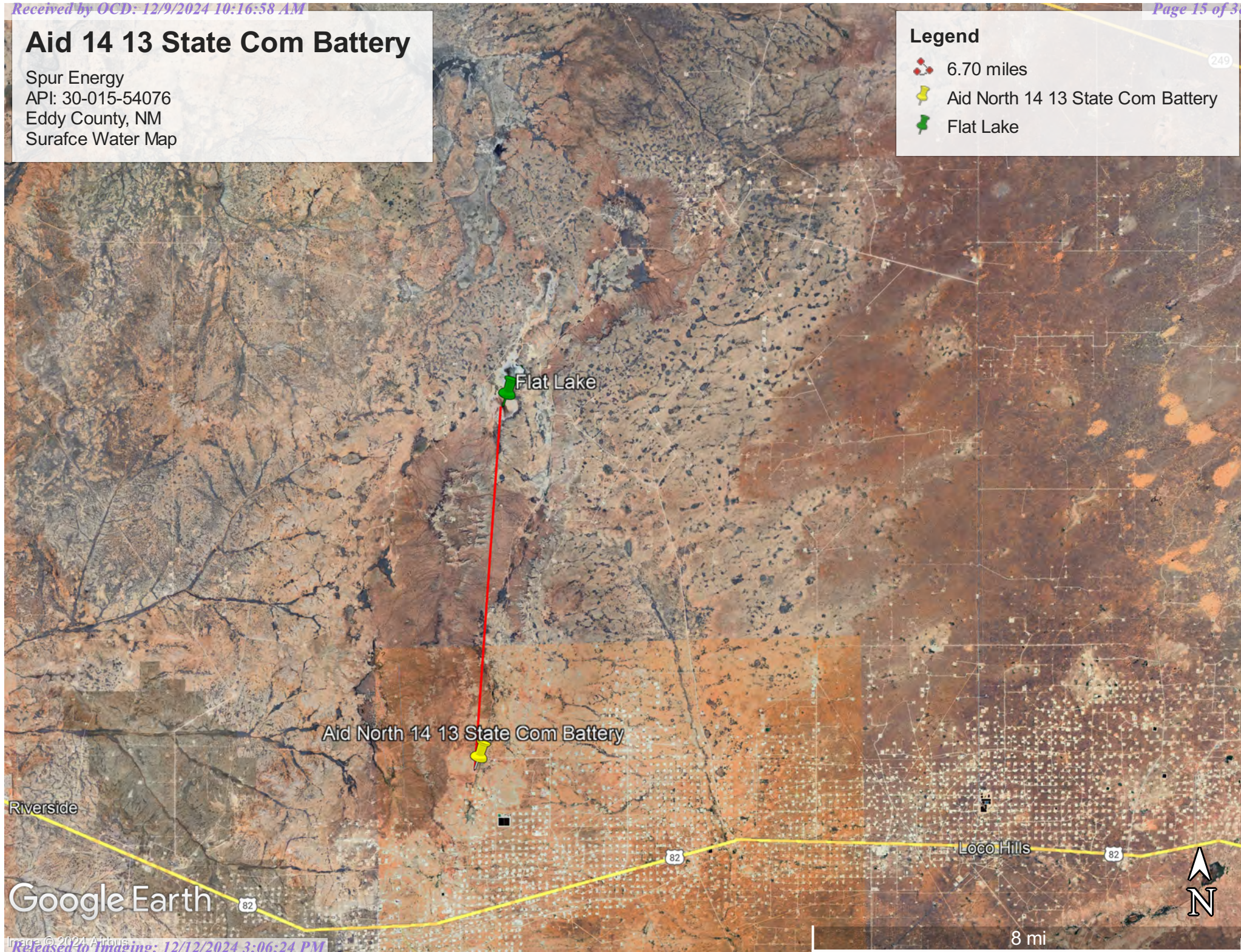
1 mi

Aid 14 13 State Com Battery

Spur Energy
API: 30-015-54076
Eddy County, NM
Surface Water Map

Legend

- 6.70 miles
- Aid North 14 13 State Com Battery
- Flat Lake



Appendix B

- Soil Survey & Soil Maps
- Geological Data
- FEMA Flood Map
- Wetlands Map

Map Unit Description: Largo-Stony land complex, 0 to 25 percent slopes---Eddy Area, New Mexico

Eddy Area, New Mexico

LN—Largo-Stony land complex, 0 to 25 percent slopes

Map Unit Setting

National map unit symbol: 1w50

Elevation: 2,000 to 5,700 feet

Mean annual precipitation: 6 to 14 inches

Mean annual air temperature: 57 to 70 degrees F

Frost-free period: 180 to 260 days

Farmland classification: Not prime farmland

Map Unit Composition

Largo and similar soils: 41 percent

Stony land: 40 percent

Minor components: 19 percent

Estimates are based on observations, descriptions, and transects of the mapunit.

Description of Largo

Setting

Landform: Plains, alluvial fans

Landform position (three-dimensional): Talf, rise

Down-slope shape: Convex, linear

Across-slope shape: Linear

Parent material: Calcareous alluvium

Typical profile

H1 - 0 to 4 inches: loam

H2 - 4 to 47 inches: silt loam

H3 - 47 to 65 inches: loam

Properties and qualities

Slope: 1 to 5 percent

Depth to restrictive feature: More than 80 inches

Drainage class: Well drained

Runoff class: Low

Capacity of the most limiting layer to transmit water

(Ksat): Moderately high (0.20 to 0.60 in/hr)

Depth to water table: More than 80 inches

Frequency of flooding: None

Frequency of ponding: None

Calcium carbonate, maximum content: 15 percent

Maximum salinity: Nonsaline to very slightly saline (0.0 to 2.0 mmhos/cm)

Available water supply, 0 to 60 inches: High (about 10.0 inches)

Interpretive groups

Land capability classification (irrigated): 3e

Land capability classification (nonirrigated): 7e

Hydrologic Soil Group: B

Map Unit Description: Largo-Stony land complex, 0 to 25 percent slopes---Eddy Area, New Mexico

Ecological site: R070BC007NM - Loamy
Hydric soil rating: No

Minor Components

Simona

Percent of map unit: 7 percent
Ecological site: R070BD002NM - Shallow Sandy
Hydric soil rating: No

Pajarito

Percent of map unit: 6 percent
Ecological site: R070BD003NM - Loamy Sand
Hydric soil rating: No

Largo

Percent of map unit: 6 percent
Ecological site: R070BC017NM - Bottomland
Hydric soil rating: No

Data Source Information

Soil Survey Area: Eddy Area, New Mexico
Survey Area Data: Version 20, Sep 3, 2024

Soil Map—Eddy Area, New Mexico




Natural Resources
Conservation Service

Web Soil Survey
National Cooperative Soil Survey

10/21/2024
Page 1 of 3

MAP LEGEND

Area of Interest (AOI)

 Area of Interest (AOI)

Soils

 Soil Map Unit Polygons

 Soil Map Unit Lines

 Soil Map Unit Points

Special Point Features



Blowout



Borrow Pit



Clay Spot



Closed Depression



Gravel Pit



Gravelly Spot



Landfill



Lava Flow



Marsh or swamp



Mine or Quarry



Miscellaneous Water



Perennial Water



Rock Outcrop



Saline Spot



Sandy Spot



Severely Eroded Spot



Sinkhole



Slide or Slip



Sodic Spot



Spoil Area



Stony Spot



Very Stony Spot



Wet Spot



Other



Special Line Features

Water Features



Streams and Canals

Transportation



Rails



Interstate Highways



US Routes



Major Roads



Local Roads

Background



Aerial Photography

MAP INFORMATION

The soil surveys that comprise your AOI were mapped at 1:20,000.

Warning: Soil Map may not be valid at this scale.

Enlargement of maps beyond the scale of mapping can cause misunderstanding of the detail of mapping and accuracy of soil line placement. The maps do not show the small areas of contrasting soils that could have been shown at a more detailed scale.

Please rely on the bar scale on each map sheet for map measurements.

Source of Map: Natural Resources Conservation Service
Web Soil Survey URL:
Coordinate System: Web Mercator (EPSG:3857)

Maps from the Web Soil Survey are based on the Web Mercator projection, which preserves direction and shape but distorts distance and area. A projection that preserves area, such as the Albers equal-area conic projection, should be used if more accurate calculations of distance or area are required.

This product is generated from the USDA-NRCS certified data as of the version date(s) listed below.

Soil Survey Area: Eddy Area, New Mexico
Survey Area Data: Version 20, Sep 3, 2024

Soil map units are labeled (as space allows) for map scales 1:50,000 or larger.

Date(s) aerial images were photographed: Nov 12, 2022—Dec 2, 2022

The orthophoto or other base map on which the soil lines were compiled and digitized probably differs from the background imagery displayed on these maps. As a result, some minor shifting of map unit boundaries may be evident.

Soil Map—Eddy Area, New Mexico

Map Unit Legend

Map Unit Symbol	Map Unit Name	Acres in AOI	Percent of AOI
LN	Largo-Stony land complex, 0 to 25 percent slopes	4.2	100.0%
Totals for Area of Interest		4.2	100.0%

(<https://www.usgs.gov/>)

Mineral Resources (<https://www.usgs.gov/energy-and-minerals/mineral-resources-program>)
/ Online Spatial Data (/) / Geology (/geology/) / by state (/geology/state/)
/ New Mexico (/geology/state/state.php?state=NM)

Piedmont alluvial deposits

XML (/geology/state/xml/NMQp;0)	JSON (/geology/state/json/NMQp;0)
Shapefile (/geology/state/unit-shape.php?unit=NMQp;0)	

Includes deposits of higher gradient tributaries bordering major stream valleys, alluvial veneers of the piedmont slope, and alluvial fans. May locally include uppermost Pliocene deposits.

State	New Mexico (/geology/state/state.php?state=NM)
Name	Piedmont alluvial deposits
Geologic age	Holocene to lower Pleistocene
Lithologic constituents	Major Unconsolidated (Alluvial) <i>Includes deposits of higher gradient tributaries bordering major stream valleys, alluvial veneers of the piedmont slope, and alluvial fans</i>
References	<div>Green, G.N., Jones, G.E., and Anderson, O.J., 1997, The Digital Geologic Map of New Mexico in ARC/INFO Format: U.S. Geological Survey Open-File Report 97-0052, 9 p., scale 1:500,000. https://pubs.er.usgs.gov/publication/ofr9752 (https://pubs.er.usgs.gov/publication/ofr9752)</div>
NGMDB product	NGMDB product page for 59219 (https://ngmdb.usgs.gov/Prodesc/proddesc_59219.htm) NGMDB product page for 22974 (https://ngmdb.usgs.gov/Prodesc/proddesc_22974.htm)

Counties Bernalillo (/geology/state/fips-unit.php?code=f35001) - Catron (/geology/state/fips-unit.php?code=f35003) - Chaves (/geology/state/fips-unit.php?code=f35005) - Colfax (/geology/state/fips-unit.php?code=f35007) - DeBaca (/geology/state/fips-unit.php?code=f35011) - Dona Ana (/geology/state/fips-unit.php?code=f35013) - Eddy (/geology/state/fips-unit.php?code=f35015) - Grant (/geology/state/fips-unit.php?code=f35017) - Guadalupe (/geology/state/fips-unit.php?code=f35019) - Hidalgo (/geology/state/fips-unit.php?code=f35023) - Lea (/geology/state/fips-unit.php?code=f35025) - Lincoln (/geology/state/fips-unit.php?code=f35027) - Los Alamos (/geology/state/fips-unit.php?code=f35028) - Luna (/geology/state/fips-unit.php?code=f35029) - Mora (/geology/state/fips-unit.php?code=f35033) - Otero (/geology/state/fips-unit.php?code=f35035) - Quay (/geology/state/fips-unit.php?code=f35037) - Rio Arriba (/geology/state/fips-unit.php?code=f35039) - Roosevelt (/geology/state/fips-unit.php?code=f35041) - Sandoval (/geology/state/fips-unit.php?code=f35043) - San Miguel (/geology/state/fips-unit.php?code=f35047) - Santa Fe (/geology/state/fips-unit.php?code=f35049) - Sierra (/geology/state/fips-unit.php?code=f35051) - Socorro (/geology/state/fips-unit.php?code=f35053) - Taos (/geology/state/fips-unit.php?code=f35055) - Torrance (/geology/state/fips-unit.php?code=f35057) - Valencia (/geology/state/fips-unit.php?code=f35061)

DOI Privacy Policy (<https://www.doi.gov/privacy>) | Legal (https://www.usgs.gov/laws/policies_notices.html) |

Accessibility (<https://www2.usgs.gov/laws/accessibility.html>) | Site Map (<https://www.usgs.gov/sitemap.html>) |

Contact USGS (<https://answers.usgs.gov/>)

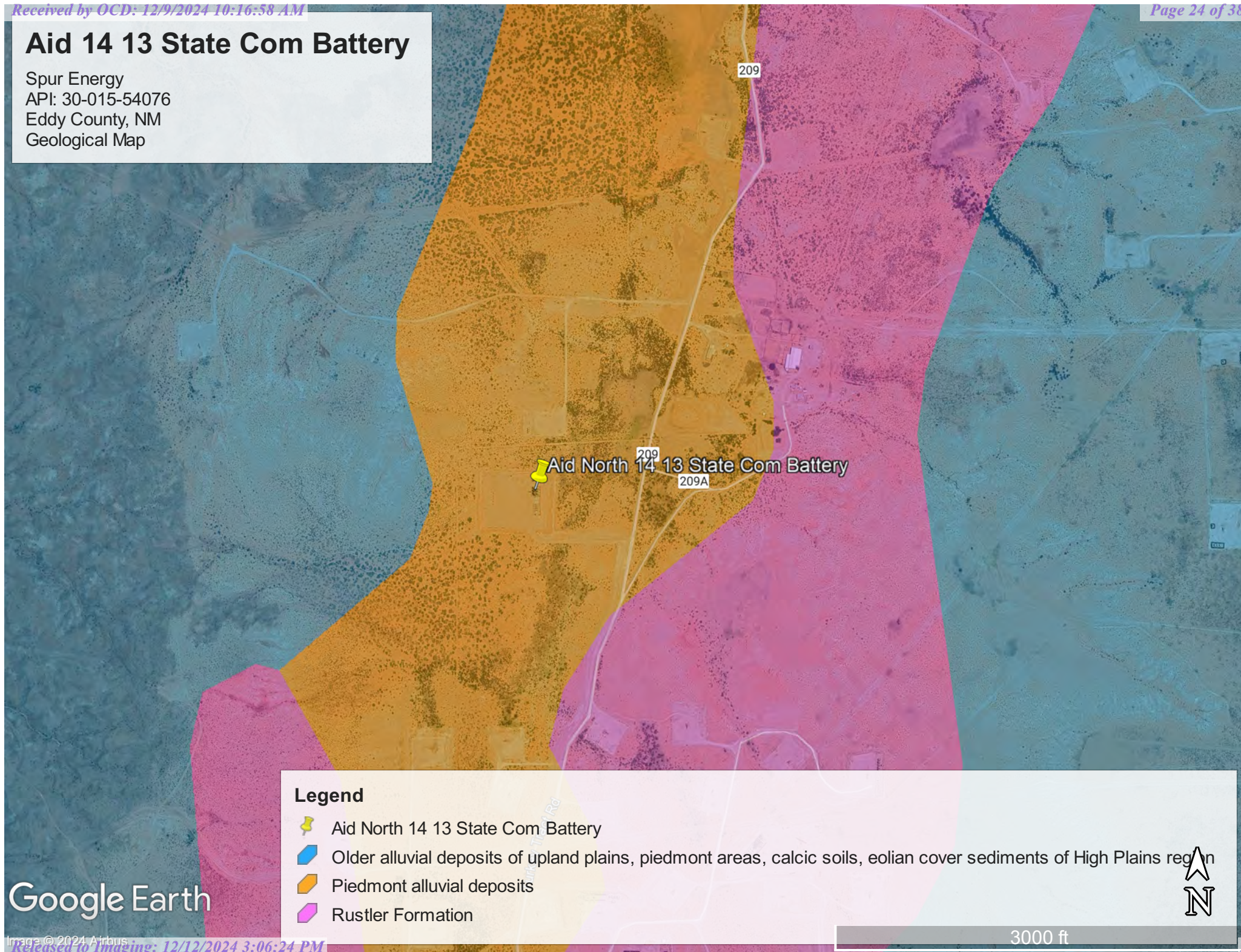
U.S. Department of the Interior (<https://www.doi.gov/>) | DOI Inspector General (<https://www.doiig.gov/>) |

White House (<https://www.whitehouse.gov/>) | E-gov (<https://www.whitehouse.gov/omb/management/egov/>) |





No Fear Act (<https://www.doi.gov/pmb/eeo/no-fear-act>) | FOIA (<https://www2.usgs.gov/foia>)

Aid 14 13 State Com Battery

Spur Energy
API: 30-015-54076
Eddy County, NM
Geological Map



Legend

-  Aid North 14 13 State Com Battery
-  Older alluvial deposits of upland plains, piedmont areas, calcic soils, eolian cover sediments of High Plains region
-  Piedmont alluvial deposits
-  Rustler Formation

Google Earth

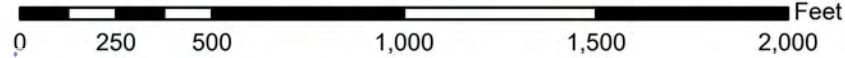
3000 ft



National Flood Hazard Layer FIRMMette



104°9'2"W 32°50'37"N



1:6,000

104°8'24"W 32°50'7"N

Basemap Imagery Source: USGS National Map 2023

Legend

SEE FIS REPORT FOR DETAILED LEGEND AND INDEX MAP FOR FIRM PANEL LAYOUT

SPECIAL FLOOD HAZARD AREAS		Without Base Flood Elevation (BFE) Zone A, V, A99
		With BFE or Depth Zone AE, AO, AH, VE, AR
		Regulatory Floodway
OTHER AREAS OF FLOOD HAZARD		0.2% Annual Chance Flood Hazard, Areas of 1% annual chance flood with average depth less than one foot or with drainage areas of less than one square mile
		Future Conditions 1% Annual Chance Flood Hazard Zone X
		Area with Reduced Flood Risk due to Levee. See Notes. Zone X
		Area with Flood Risk due to Levee Zone X
OTHER AREAS		NO SCREEN Area of Minimal Flood Hazard Zone X
		Effective LOMRs
GENERAL STRUCTURES		Area of Undetermined Flood Hazard Zone D
		Channel, Culvert, or Storm Sewer
OTHER FEATURES		Levee, Dike, or Floodwall
		20.2 Cross Sections with 1% Annual Chance Water Surface Elevation
		17.5
		Coastal Transect
		Base Flood Elevation Line (BFE)
		Limit of Study
		Jurisdiction Boundary
		Coastal Transect Baseline
		Profile Baseline
		Hydrographic Feature
MAP PANELS		Digital Data Available
		No Digital Data Available
		Unmapped

The pin displayed on the map is an approximate point selected by the user and does not represent an authoritative property location.

This map complies with FEMA's standards for the use of digital flood maps if it is not void as described below. The basemap shown complies with FEMA's basemap accuracy standards

The flood hazard information is derived directly from the authoritative NFHL web services provided by FEMA. This map was exported on **10/21/2024 at 6:01 PM** and does not reflect changes or amendments subsequent to this date and time. The NFHL and effective information may change or become superseded by new data over time.

This map image is void if the one or more of the following map elements do not appear: basemap imagery, flood zone labels, legend, scale bar, map creation date, community identifiers, FIRM panel number, and FIRM effective date. Map images for unmapped and unmodernized areas cannot be used for regulatory purposes.

Received by OCD: 12/20/2024 10:16:58 AM
Page 25 of 38



October 21, 2024

This map is for general reference only. The US Fish and Wildlife Service is not responsible for the accuracy or currentness of the base data shown on this map. All wetlands related data should be used in accordance with the layer metadata found on the Wetlands Mapper web site.



Appendix C

- 48-Hour Notification
- Liner Inspection Form

Sebastian@pimaoil.com

From: OCDOnline@state.nm.us
Sent: Wednesday, November 6, 2024 5:12 PM
To: sebastian@pimaoil.com
Subject: The Oil Conservation Division (OCD) has accepted the application, Application ID: 400189

To whom it may concern (c/o Sebastian Orozco for Spur Energy Partners LLC),

The OCD has received the submitted *Notification for Liner Inspection for a Release* (C-141L), for incident ID (n#) nAPP2428740038.

The liner inspection is expected to take place:

When: 11/11/2024 @ 10:00

Where: B-14-17S-28E 0 FNL 0 FEL (32.83938,-104.14534)

Additional Information: Marisa Loya
575-408-3446

Additional Instructions: 32.83938,-104.14534

An OCD representative may be available onsite at the date and time reported. In the absence or presence of an OCD representative, liner inspection pursuant to 19.15.29.11.A(5)(a) NMAC is required. Should there be a change in the scheduled date and time of the sampling event, then another notification should be resubmitted through OCD permitting as soon as possible.

- **Failure to notify the OCD of liner inspections including any changes in date/time per the requirements of 19.15.29.11.A(5)(a)(ii) NMAC, may result in the inspection not being accepted.**

If you have any questions regarding this application, or don't know why you have received this email, please contact us.

New Mexico Energy, Minerals and Natural Resources Department
1220 South St. Francis Drive
Santa Fe, NM 87505



Pima Environmental Services, LLC

Liner Inspection FormCompany Name: Spur EnergySite: Aid North 14 13 State Com BatteryLat/Long: 32.83938, -104.14534

NMOCD Incident ID

& Incident Date: NAPP2428740038 10/13/2024

2-Day Notification

Sent: via Email by Sebastian Orozco on OCD portal 11/06/2024Inspection Date: 11/11/2024

Liner Type: Earthen w/liner Earthen no liner Polystar

 Steel w/poly liner Steel w/spray epoxy No Liner

Other: _____

Visualization	Yes	No	Comments
Is there a tear in the liner?		X	
Are there holes in the liner?		X	
Is the liner retaining any fluids?	X		Residual liquid is visible in the photo log from the power washing cleaning event.
Does the liner have integrity to contain a leak?	X		

Comments: _____

Inspector Name: Marisa Loya Inspector Signature: Marisa Loya



Appendix D

○ Photographic Documentation

PHOTOGRAPHIC DOCUMENTATION

SITE NAME: Aid North 14 13 State Com Battery

Liner Inspection



Photo of liner pursuant to being power washed facing North. Fluid from power washer.



Photo of liner pursuant to being power washed facing South. Fluid from power washer.



Photo of liner pursuant to being power washed facing West. Fluid from power washer



Photo of liner pursuant to being power washed facing East. Fluid from power washer.



Photo of liner pursuant to being power washed facing West. Fluid from power washer



Photo of liner pursuant to being power washed facing North. Fluid from power washer.



Photo of liner pursuant to being power washed facing South. Fluid from power washer.



Photo of liner pursuant to being power washed facing East. Fluid from power washer

Sante Fe Main Office
Phone: (505) 476-3441

General Information
Phone: (505) 629-6116

Online Phone Directory
<https://www.emnrd.nm.gov/ocd/contact-us>

State of New Mexico
Energy, Minerals and Natural Resources
Oil Conservation Division
1220 S. St Francis Dr.
Santa Fe, NM 87505

QUESTIONS

Action 409841

QUESTIONS

Operator: Spur Energy Partners LLC 9655 Katy Freeway Houston, TX 77024	OGRID: 328947
	Action Number: 409841
	Action Type: [C-141] Remediation Closure Request C-141 (C-141-v-Closure)

QUESTIONS

Prerequisites	
Incident ID (n#)	nAPP2428740038
Incident Name	NAPP2428740038 AID NORTH 14 13 STATE COM BATTERY @ 30-015-54076
Incident Type	Produced Water Release
Incident Status	Remediation Closure Report Received
Incident Well	[30-015-54076] AID NORTH 14 13 STATE COM #060H

Location of Release Source	
<i>Please answer all the questions in this group.</i>	
Site Name	AID NORTH 14 13 STATE COM BATTERY
Date Release Discovered	10/13/2024
Surface Owner	State

Incident Details	
<i>Please answer all the questions in this group.</i>	
Incident Type	Produced Water Release
Did this release result in a fire or is the result of a fire	No
Did this release result in any injuries	No
Has this release reached or does it have a reasonable probability of reaching a watercourse	No
Has this release endangered or does it have a reasonable probability of endangering public health	No
Has this release substantially damaged or will it substantially damage property or the environment	No
Is this release of a volume that is or may with reasonable probability be detrimental to fresh water	No

Nature and Volume of Release	
<i>Material(s) released, please answer all that apply below. Any calculations or specific justifications for the volumes provided should be attached to the follow-up C-141 submission.</i>	
Crude Oil Released (bbls) Details	Not answered.
Produced Water Released (bbls) Details	Cause: High Line Pressure Fitting Produced Water Released: 30 BBL Recovered: 30 BBL Lost: 0 BBL.
Is the concentration of chloride in the produced water >10,000 mg/l	No
Condensate Released (bbls) Details	Not answered.
Natural Gas Vented (Mcf) Details	Not answered.
Natural Gas Flared (Mcf) Details	Not answered.
Other Released Details	Not answered.
Are there additional details for the questions above (i.e. any answer containing Other, Specify, Unknown, and/or Fire, or any negative lost amounts)	HIGH LINE PRESSURE CAUSED A SEAL TO LEAK PW INTO LINED CONTAINMENT

Sante Fe Main Office
Phone: (505) 476-3441

General Information
Phone: (505) 629-6116

Online Phone Directory
<https://www.emnrd.nm.gov/ocd/contact-us>

State of New Mexico
Energy, Minerals and Natural Resources
Oil Conservation Division
1220 S. St Francis Dr.
Santa Fe, NM 87505

QUESTIONS, Page 2

Action 409841

QUESTIONS (continued)

Operator: Spur Energy Partners LLC 9655 Katy Freeway Houston, TX 77024	OGRID: 328947
	Action Number: 409841
	Action Type: [C-141] Remediation Closure Request C-141 (C-141-v-Closure)

QUESTIONS

Nature and Volume of Release (continued)	
Is this a gas only submission (i.e. only significant Mcf values reported)	No, according to supplied volumes this does not appear to be a "gas only" report.
Was this a major release as defined by Subsection A of 19.15.29.7 NMAC	Yes
Reasons why this would be considered a submission for a notification of a major release	From paragraph A. "Major release" determine using: (1) an unauthorized release of a volume, excluding gases, of 25 barrels or more.
With the implementation of the 19.15.27 NMAC (05/25/2021), venting and/or flaring of natural gas (i.e. gas only) are to be submitted on the C-129 form.	

Initial Response

The responsible party must undertake the following actions immediately unless they could create a safety hazard that would result in injury.

The source of the release has been stopped	True
The impacted area has been secured to protect human health and the environment	True
Released materials have been contained via the use of berms or dikes, absorbent pads, or other containment devices	True
All free liquids and recoverable materials have been removed and managed appropriately	True
If all the actions described above have not been undertaken, explain why	N/A

Per Paragraph (4) of Subsection B of 19.15.29.8 NMAC the responsible party may commence remediation immediately after discovery of a release. If remediation has begun, please prepare and attach a narrative of actions to date in the follow-up C-141 submission. If remedial efforts have been successfully completed or if the release occurred within a lined containment area (see Subparagraph (a) of Paragraph (5) of Subsection A of 19.15.29.11 NMAC), please prepare and attach all information needed for closure evaluation in the follow-up C-141 submission.

I hereby certify that the information given above is true and complete to the best of my knowledge and understand that pursuant to OCD rules and regulations all operators are required to report and/or file certain release notifications and perform corrective actions for releases which may endanger public health or the environment. The acceptance of a C-141 report by the OCD does not relieve the operator of liability should their operations have failed to adequately investigate and remediate contamination that pose a threat to groundwater, surface water, human health or the environment. In addition, OCD acceptance of a C-141 report does not relieve the operator of responsibility for compliance with any other federal, state, or local laws and/or regulations.

I hereby agree and sign off to the above statement	Name: Katherine Purvis Title: EHS Coordinator Email: katherine.purvis@spurenergy.com Date: 10/21/2024
--	--

Sante Fe Main Office
Phone: (505) 476-3441

General Information
Phone: (505) 629-6116

Online Phone Directory
<https://www.emnrd.nm.gov/ocd/contact-us>

State of New Mexico
Energy, Minerals and Natural Resources
Oil Conservation Division
1220 S. St Francis Dr.
Santa Fe, NM 87505

QUESTIONS, Page 3

Action 409841

QUESTIONS (continued)

Operator: Spur Energy Partners LLC 9655 Katy Freeway Houston, TX 77024	OGRID:
	328947
	Action Number:
	409841
Action Type: [C-141] Remediation Closure Request C-141 (C-141-v-Closure)	

QUESTIONS

Site Characterization	
<i>Please answer all the questions in this group (only required when seeking remediation plan approval and beyond). This information must be provided to the appropriate district office no later than 90 days after the release discovery date.</i>	
What is the shallowest depth to groundwater beneath the area affected by the release in feet below ground surface (ft bgs)	Between 51 and 75 (ft.)
What method was used to determine the depth to ground water	NM OSE iWaters Database Search
Did this release impact groundwater or surface water	No
What is the minimum distance, between the closest lateral extents of the release and the following surface areas:	
A continuously flowing watercourse or any other significant watercourse	Between ½ and 1 (mi.)
Any lakebed, sinkhole, or playa lake (measured from the ordinary high-water mark)	Between ½ and 1 (mi.)
An occupied permanent residence, school, hospital, institution, or church	Greater than 5 (mi.)
A spring or a private domestic fresh water well used by less than five households for domestic or stock watering purposes	Between ½ and 1 (mi.)
Any other fresh water well or spring	Between ½ and 1 (mi.)
Incorporated municipal boundaries or a defined municipal fresh water well field	Greater than 5 (mi.)
A wetland	Between ½ and 1 (mi.)
A subsurface mine	Greater than 5 (mi.)
An (non-karst) unstable area	Greater than 5 (mi.)
Categorize the risk of this well / site being in a karst geology	Low
A 100-year floodplain	Between 1 and 5 (mi.)
Did the release impact areas not on an exploration, development, production, or storage site	No

Remediation Plan	
<i>Please answer all the questions that apply or are indicated. This information must be provided to the appropriate district office no later than 90 days after the release discovery date.</i>	
Requesting a remediation plan approval with this submission	Yes
<i>Attach a comprehensive report demonstrating the lateral and vertical extents of soil contamination associated with the release have been determined, pursuant to 19.15.29.11 NMAC and 19.15.29.13 NMAC.</i>	
Have the lateral and vertical extents of contamination been fully delineated	Yes
Was this release entirely contained within a lined containment area	Yes
<i>Per Subsection B of 19.15.29.11 NMAC unless the site characterization report includes completed efforts at remediation, the report must include a proposed remediation plan in accordance with 19.15.29.12 NMAC, which includes the anticipated timelines for beginning and completing the remediation.</i>	
On what estimated date will the remediation commence	11/11/2024
On what date will (or did) the final sampling or liner inspection occur	11/11/2024
On what date will (or was) the remediation complete(d)	11/11/2024
What is the estimated surface area (in square feet) that will be remediated	5000
What is the estimated volume (in cubic yards) that will be remediated	0
<i>These estimated dates and measurements are recognized to be the best guess or calculation at the time of submission and may (be) change(d) over time as more remediation efforts are completed.</i>	
<i>The OCD recognizes that proposed remediation measures may have to be minimally adjusted in accordance with the physical realities encountered during remediation. If the responsible party has any need to significantly deviate from the remediation plan proposed, then it should consult with the division to determine if another remediation plan submission is required.</i>	

Sante Fe Main Office
Phone: (505) 476-3441

General Information
Phone: (505) 629-6116

Online Phone Directory
<https://www.emnrd.nm.gov/ocd/contact-us>

State of New Mexico
Energy, Minerals and Natural Resources
Oil Conservation Division
1220 S. St Francis Dr.
Santa Fe, NM 87505

QUESTIONS, Page 4

Action 409841

QUESTIONS (continued)

Operator: Spur Energy Partners LLC 9655 Katy Freeway Houston, TX 77024	OGRID: 328947
	Action Number: 409841
	Action Type: [C-141] Remediation Closure Request C-141 (C-141-v-Closure)

QUESTIONS

Remediation Plan (continued)	
<i>Please answer all the questions that apply or are indicated. This information must be provided to the appropriate district office no later than 90 days after the release discovery date.</i>	
This remediation will (or is expected to) utilize the following processes to remediate / reduce contaminants:	
<i>(Select all answers below that apply.)</i>	
Is (or was) there affected material present needing to be removed	No
Is (or was) there a power wash of the lined containment area (to be) performed	Yes
OTHER (Non-listed remedial process)	Not answered.
<i>Per Subsection B of 19.15.29.11 NMAC unless the site characterization report includes completed efforts at remediation, the report must include a proposed remediation plan in accordance with 19.15.29.12 NMAC, which includes the anticipated timelines for beginning and completing the remediation.</i>	
I hereby certify that the information given above is true and complete to the best of my knowledge and understand that pursuant to OCD rules and regulations all operators are required to report and/or file certain release notifications and perform corrective actions for releases which may endanger public health or the environment. The acceptance of a C-141 report by the OCD does not relieve the operator of liability should their operations have failed to adequately investigate and remediate contamination that pose a threat to groundwater, surface water, human health or the environment. In addition, OCD acceptance of a C-141 report does not relieve the operator of responsibility for compliance with any other federal, state, or local laws and/or regulations.	
I hereby agree and sign off to the above statement	Name: Katherine Purvis Title: EHS Coordinator Email: katherine.purvis@spurenergy.com Date: 12/09/2024
<i>The OCD recognizes that proposed remediation measures may have to be minimally adjusted in accordance with the physical realities encountered during remediation. If the responsible party has any need to significantly deviate from the remediation plan proposed, then it should consult with the division to determine if another remediation plan submission is required.</i>	

Sante Fe Main Office
Phone: (505) 476-3441

General Information
Phone: (505) 629-6116

Online Phone Directory
<https://www.emnrd.nm.gov/ocd/contact-us>

State of New Mexico
Energy, Minerals and Natural Resources
Oil Conservation Division
1220 S. St Francis Dr.
Santa Fe, NM 87505

QUESTIONS, Page 6

Action 409841

QUESTIONS (continued)

Operator: Spur Energy Partners LLC 9655 Katy Freeway Houston, TX 77024	OGRID: 328947
	Action Number: 409841
	Action Type: [C-141] Remediation Closure Request C-141 (C-141-v-Closure)

QUESTIONS

Liner Inspection Information	
Last liner inspection notification (C-141L) recorded	400189
Liner inspection date pursuant to Subparagraph (a) of Paragraph (5) of Subsection A of 19.15.29.11 NMAC	11/11/2024
Was all the impacted materials removed from the liner	Yes
What was the liner inspection surface area in square feet	5000

Remediation Closure Request

Only answer the questions in this group if seeking remediation closure for this release because all remediation steps have been completed.

Requesting a remediation closure approval with this submission	Yes
Have the lateral and vertical extents of contamination been fully delineated	Yes
Was this release entirely contained within a lined containment area	Yes
What was the total surface area (in square feet) remediated	5000
What was the total volume (cubic yards) remediated	0
Summarize any additional remediation activities not included by answers (above)	LINER WAS POWERWASHED AND INSPECTED AND FOUND TO HAVE THE ABILITY TO CONTAIN FLUIDS

The responsible party must attach information demonstrating they have complied with all applicable closure requirements and any conditions or directives of the OCD. This demonstration should be in the form of a comprehensive report (in .pdf format) including a scaled site map, sampling diagrams, relevant field notes, photographs of any excavation prior to backfilling, laboratory data including chain of custody documents of final sampling, and a narrative of the remedial activities. Refer to 19.15.29.12 NMAC.

I hereby certify that the information given above is true and complete to the best of my knowledge and understand that pursuant to OCD rules and regulations all operators are required to report and/or file certain release notifications and perform corrective actions for releases which may endanger public health or the environment. The acceptance of a C-141 report by the OCD does not relieve the operator of liability should their operations have failed to adequately investigate and remediate contamination that pose a threat to groundwater, surface water, human health or the environment. In addition, OCD acceptance of a C-141 report does not relieve the operator of responsibility for compliance with any other federal, state, or local laws and/or regulations. The responsible party acknowledges they must substantially restore, reclaim, and re-vegetate the impacted surface area to the conditions that existed prior to the release or their final land use in accordance with 19.15.29.13 NMAC including notification to the OCD when reclamation and re-vegetation are complete.

I hereby agree and sign off to the above statement	Name: Katherine Purvis Title: EHS Coordinator Email: katherine.purvis@spurenergy.com Date: 12/09/2024
--	---

Sante Fe Main Office
Phone: (505) 476-3441

General Information
Phone: (505) 629-6116

Online Phone Directory
<https://www.emnrd.nm.gov/ocd/contact-us>

State of New Mexico

Energy, Minerals and Natural Resources

Oil Conservation Division

1220 S. St Francis Dr.

Santa Fe, NM 87505

CONDITIONS

Action 409841

CONDITIONS

Operator: Spur Energy Partners LLC 9655 Katy Freeway Houston, TX 77024	OGRID: 328947
	Action Number: 409841
	Action Type: [C-141] Remediation Closure Request C-141 (C-141-v-Closure)

CONDITIONS

Created By	Condition	Condition Date
scott.rodgers	App ID 409841 Liner Inspection approved	12/12/2024