



December 11, 2024

New Mexico Oil Conservation Division

1220 South St. Francis Drive
Santa Fe, New Mexico 87505

**Re: Closure Request
PLU 21 DTD CVB
Facility ID fAPP2402925499
Incident Number nAPP2428834682
Eddy County, New Mexico**

To Whom It May Concern:

Ensolum, LLC (Ensolum) on behalf of XTO Energy, Inc. (XTO), has prepared this *Closure Request* to document assessment, excavation, and soil sampling activities at the PLU 21 DTD CVB (Site). The purpose of the assessment and soil sampling activities was to assess for the presence or absence of impacts to soil following a release of produced water into a temporary lined containment and onto the facility pad. Based on field observations, field screening activities, and soil sample laboratory analytical results, XTO is submitting this *Closure Request*, describing assessment, excavation, and delineation activities that have occurred and requesting no further action for Incident Number nAPP2428834682.

SITE DESCRIPTION AND RELEASE SUMMARY

The Site is located in Unit M, Section 16, Township 24 South, Range 30 East, in Eddy County, New Mexico (32.2113°, -103.89296°) and is associated with oil and gas exploration and production operations on State Trust Land managed by the State Land Office (SLO) under lease ID E05558005.

On October 12, 2024, human error caused the frac tanks to overflow resulting in the release of approximately 22 barrels (bbls) of produced water into a temporary lined containment and onto the pad surface. A vacuum truck was immediately dispatched to the Site to recover free-standing fluids; 21 bbls of released produced water were recovered from within the lined containment and the surface of the pad. XTO reported the release to the NMOCD via Notification of Release (NOR) on October 14, 2024, and submitted an Initial C-141 Application (C-141) on October 16, 2024. The release was assigned Incident Number nAPP2428834682.

SITE CHARACTERIZATION AND CLOSURE CRITERIA

The Site was characterized to assess the applicability of Table I, Closure Criteria for Soils Impacted by a Release, of Title 19, Chapter 15, Part 29 (19.15.29) of the New Mexico Administrative Code (NMAC). Results from the characterization desktop review are presented below. Potential site receptors are identified on Figure 1.

Depth to groundwater at the Site is estimated to be greater than 100 feet below ground surface (bgs) based on a well drilled for cathodic protection. On August 26, 2015, a well permitted by New Mexico

Office of the State Engineer (OSE) well C-3893, located approximately 0.6 miles east of the Site was drilled utilizing mud rotary. The boring was drilled to a total depth of 600 feet bgs with no reported groundwater encountered. The Well Record and Log is included in Appendix A. All wells used to evaluate depth to groundwater are presented on Figure 1.

The closest continuously flowing or significant watercourse to the Site is a dry wash, located approximately 2,834 feet southwest of the Site. The Site is greater than 200 feet from a lakebed, sinkhole, or playa lake and greater than 300 feet from an occupied residence, school, hospital, institution, church, or wetland. The Site is greater than 1,000 feet to a freshwater well or spring and is not within a 100-year floodplain or overlying a subsurface mine. The Site is not underlain by unstable geology (low potential karst designation area).

Based on the results of the Site Characterization, the following NMOCD Table I Closure Criteria (Closure Criteria) apply:

- Benzene: 10 milligrams per kilogram (mg/kg)
- Benzene, toluene, ethylbenzene, and total xylenes (BTEX): 50 mg/kg
- Total petroleum hydrocarbons (TPH): 100 mg/kg
- Chloride: 600 mg/kg

NMSLO CULTURAL RESOURCES AND BIOLOGICAL REVIEW

Cultural Properties Protection

Since the release occurred on the well pad, the site is exempt from the Cultural Properties Protection Rule (CPP). As such, no additional cultural resource surveys were completed in connection with this release.

Biological Review

Ensolum personnel conducted a desktop review to establish if the Site is within an area of possible threatened, endangered, and sensitive wildlife and plant species, environmentally sensitive areas, surface waters, and sensitive soils.

- The Site is not located within the historical range of the Lesser Prairie Chicken (LPC) or within an NMSLO Candidate Conservation Agreement with Assurances (CCAA) area.
- A review of the U.S. Fish and Wildlife Services Information for Planning and Consultation (IPaC) resources indicated there are no potential critical habitats at the Site. The release was within a lined containment and on the pad surface, limiting any contact with potential habitats that may exist in the vicinity the Site.
- No environmentally sensitive receptors were located near the Site, as determined by the Site Characterization.
- The Natural Resources Conservation Service (NRCS) Web Soil Survey classifies the soil type at the Site as Kermit-Berino fine sands. The release occurred in a lined containment located on the caliche surface of the well pad limiting contact with potentially sensitive native soil.

DELINEATION ACTIVITIES

On November 25, 2024, Ensolum personnel visited the Site to evaluate the release extent based on information provided on the C-141, internal documents, and visual observations. No soil samples were collected during this visit. A preliminary inspection of the temporary lined containment indicated the liner appeared to be competent but was not clear of debris. Due to the absence of a liner inspection notification to the NMOCD, the liner was scheduled to be cleaned and re-inspected on December 6, 2024. The release extent was mapped utilizing a handheld Global Positioning System (GPS) unit and is depicted on Figure 2. Photographic documentation is included in Appendix B.

On December 5, 2024, and December 6, 2024, Ensolum personnel returned to the Site to complete the lined containment inspection, delineation, and excavation activities. Upon arrival to the Site, it was discovered the temporary lined containment was in the process of being removed and was unable to be properly inspected. Delineation borehole BH01 was advanced via hand auger to a maximum depth of 1-foot bgs within the release extent to assess the vertical extent of the release. Delineation soil samples were collected from the borehole at depths ranging from 0.5 feet to 1-foot bgs. Soil from the delineation borehole was field screened for volatile organic compounds (VOCs) utilizing a calibrated photoionization detector (PID) and chloride using Hach® chloride QuanTab® test strips. Field screening results and observations for the borehole were logged on a lithologic/soil sampling log, which is included in Appendix C. The delineation soil sample location is depicted on Figure 2. Photographic documentation is included in Appendix B.

The soil samples were placed directly into pre-cleaned glass jars, labeled with the location, date, time, sampler name, method of analysis, and immediately placed on ice. The soil samples were transported under strict chain-of-custody procedures to Cardinal Laboratories (Cardinal) in Hobbs, New Mexico, for analysis of the following contaminants of concern (COCs): BTEX following United States Environmental Protection Agency (EPA) Method 8021B; TPH-gasoline range organics (GRO), TPH-diesel range organics (DRO), and TPH-oil range organics (ORO) following EPA Method 8015M/D; and chloride following Standard Methods SM4500.

EXCAVATION AND CONFIRMATION SOIL SAMPLING ACTIVITIES

Based on delineation field screening results of the release extent, surface scraping and excavation activities were performed using a backhoe and transport vehicle. To direct excavation activities, Ensolum personnel field screened soil for VOCs and chloride. Following removal of impacted soil, Ensolum personnel collected 5-point composite soil samples representing no more than 200 square feet from the sidewalls and floor of the excavation. The 5-point composite soil samples were collected by placing five equivalent aliquots of soil into a 1-gallon, resealable plastic bag and homogenizing the samples by thoroughly mixing. Confirmation soil samples FS01 through FS04 were collected from the floor of the excavation at a depth of 1-foot bgs. Confirmation sidewall soil samples, SW01 and SW02, were collected from the sidewall of the excavation at depths ranging from ground surface to 1-foot bgs.

Following the removal of the lined containment, composite confirmation soil samples were collected within the release extent to confirm the presence or absence of impacts beneath the liner. Composite confirmation soil samples FS05 through FS10 were collected from a depth of 0.5 feet bgs and represented no more than 200 square feet following surface scraping activities. The excavation extent and confirmation soil sample locations are presented on Figure 3. All confirmation soil samples were collected, handled, and analyzed by the same methods described above at Cardinal in Hobbs, New Mexico.

XTO Energy, Inc
Closure Request
PLU 21 DTD CVB



On December 10, 2024, Ensolum personnel returned to the Site to oversee additional excavation activities. Based on laboratory analytical results, confirmation soil sample FS09 required excavation. The area represented by FS09 was excavated to a total depth of 1-foot bgs. Two 5-point composite samples, FS09A and SW03, were collected from the excavation. Soil sample FS09A was collected from a depth of 1-foot bgs and sidewall soil sample SW03 was collected from depths ranging from ground surface to 1-foot bgs. The soil samples were collected, handled, and analyzed by the same methods mentioned above.

The final excavation extent measured approximately 1,998 square feet. A total of approximately 55 cubic yards of impacted soil was removed during the excavation activities. The impacted soil was transported and properly disposed of at the R360 Disposal Facility in Hobbs, New Mexico. After completion of confirmation sampling, the excavation area was secured with fencing.

LABORATORY ANALYTICAL RESULTS

Laboratory analytical results for the confirmation floor soil samples FS01 through FS04, sidewall soil sample SW01, and confirmation soil samples FS05 through FS10, indicated that all COC concentrations were compliant with the Closure Criteria. Laboratory analytical results are summarized in Table 1 and the complete laboratory analytical reports are included as Appendix D.

CLOSURE REQUEST

Site assessment and excavation activities were conducted at the Site to address the October 12, 2024, release of produced water. Laboratory analytical results for the confirmation soil samples, collected from the final excavation extent, indicated that all COC concentrations were compliant with the Site Closure Criteria. Based on the soil sample analytical results, no further remediation was required. XTO will backfill the excavation with material purchased locally and recontour the Site to match pre-existing site conditions. Due to the release occurring onto the pad surface, final reclamation of the pad surface will be completed during pad abandonment.

Excavation of impacted soil has mitigated potential impacts at this Site. Depth to groundwater has been estimated to be greater than 100 feet bgs and the strictest Closure Criteria were applied, though no other sensitive receptors were identified near the Site. XTO believes these remedial actions are protective of human health, the environment, and groundwater. As such, XTO respectfully requests closure for Incident Number nAPP2428834682.

If you have any questions or comments, please contact Ms. Tacoma Morrissey at (337) 257-8307 or tmorrissey@ensolum.com.

Sincerely,
Ensolum, LLC

A handwritten signature in black ink, appearing to read "Tracy Hillard".

Tracy Hillard
Project Engineer

A handwritten signature in black ink, appearing to read "Tacoma Morrissey".

Tacoma Morrissey
Associate Principal

XTO Energy, Inc
Closure Request
PLU 21 DTD CVB



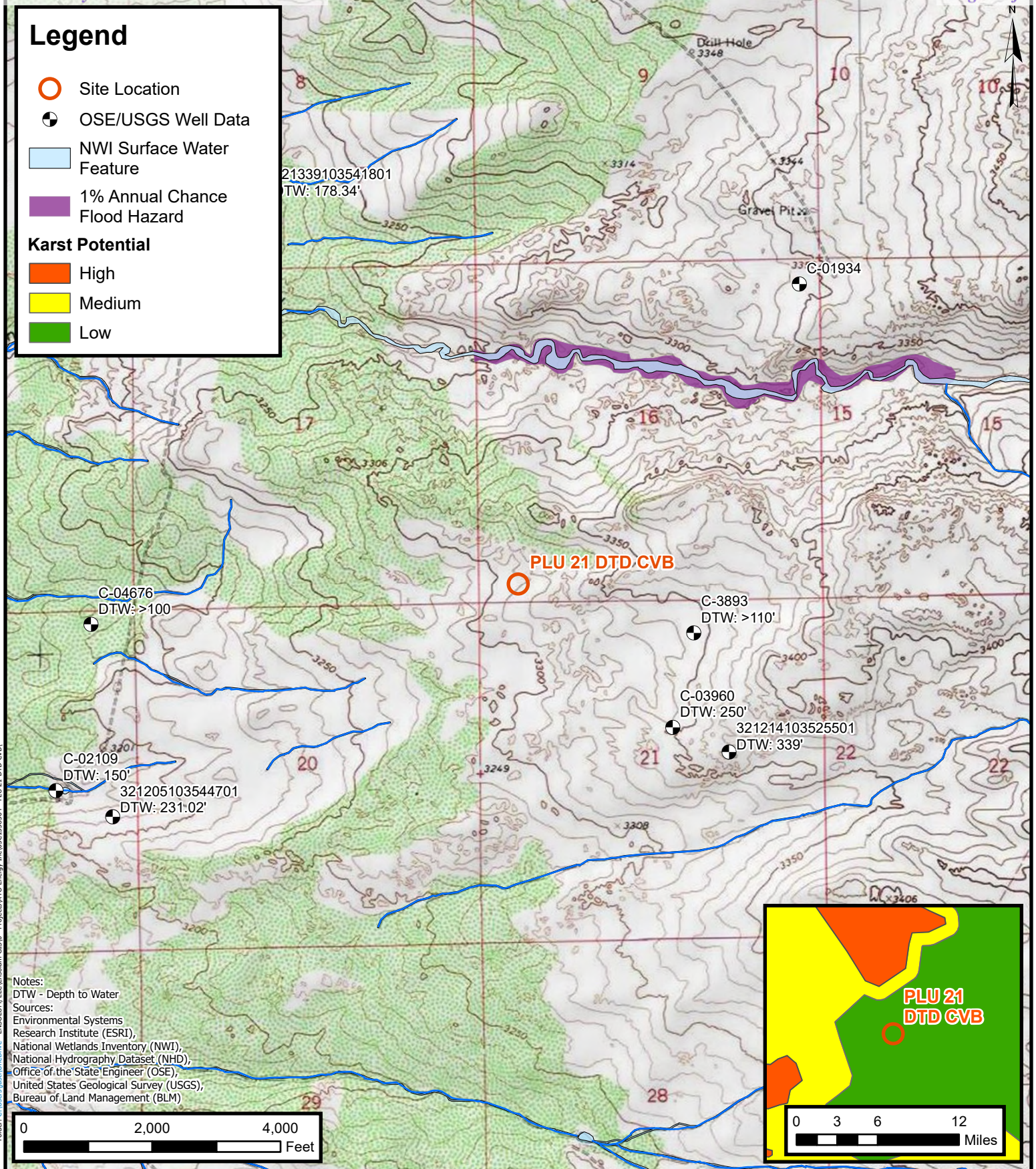
cc: Colton Brown, XTO
Kaylan Dirkx, XTO
SLO

Appendices:

Figure 1 Site Receptor Map
Figure 2 Delineation Soil Sample Locations
Figure 3 Confirmation Soil Sample Locations
Table 1 Soil Sample Analytical Results
Appendix A Referenced Well Records
Appendix B Photographic Log
Appendix C Lithologic / Soil Sampling Log
Appendix D Laboratory Analytical Reports & Chain-of-Custody Documentation
Appendix E NMOCD Notifications



FIGURES






Site Receptor Map

XTO Energy Inc.
PLU 21 DTD CVB
Incident Number: NAPP2428834682
Unit M, Section 16, T 24S, R 30E
Eddy County, New Mexico

FIGURE

1

Legend

-  Delineation Soil Sample with Concentrations Previously Exceeding Closure Criteria
-  Release Extent
-  Liner Containment Area



BH01@0.5'
BH01A@1'

Notes:
Sample ID @ Depth Below Ground Surface.
Samples in bold indicate sample exceeded applicable closure criteria.

0 15 30 60 90 120
Feet

Sources: Environmental Systems Research Institute (ESRI)



Delineation Soil Sample Locations

XTO Energy Inc.
PLU 21 DTD CVB
Incident Number: NAPP2428834682
Unit M, Section 16, T 24S, R 30E
Eddy County, New Mexico

FIGURE

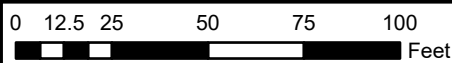
2

Legend

- Excavation Floor Sample in Compliance with Closure Criteria
- ▲ Excavation Sidewall Sample in Compliance with Closure Criteria
- ▭ Liner Containment Area
- ▨ Excavation Extent

**Notes:**

Sample ID @ Depth Below Ground Surface.
 Samples in **bold** indicate sample exceeded applicable closure criteria.
 Grey text indicate soil sample was removed during excavation activities.



Sources: Environmental Systems Research Institute (ESRI)

**Confirmation Soil Sample Locations**

XTO Energy Inc.
 PLU 21 DTD CVB
 Incident Number: NAPP2428834682
 Unit M, Section 16, T 24S, R 30E
 Eddy County, New Mexico

FIGURE**3**



TABLES



TABLE 1 SOIL SAMPLE ANALYTICAL RESULTS PLU 21 DTD CVB XTO Energy, Inc Eddy County, New Mexico										
Sample I.D.	Sample Date	Sample Depth (feet bgs)	Benzene (mg/kg)	Total BTEX (mg/kg)	TPH GRO (mg/kg)	TPH DRO (mg/kg)	TPH ORO (mg/kg)	GRO+DRO (mg/kg)	Total TPH (mg/kg)	Chloride (mg/kg)
NMOCD Table I Closure Criteria (NMAC 19.15.29)			10	50	NE	NE	NE	NE	100	600
Delineation Soil Samples										
BH01	12/05/2024	0.5	<0.050	<0.300	<10.0	<10.0	<10.0	<10.0	<10.0	1,630
BH01A	12/05/2024	1	<0.050	<0.300	<10.0	<10.0	<10.0	<10.0	<10.0	64.0
Confirmation Soil Samples										
FS01	12/05/2024	1	<0.050	<0.300	<10.0	<10.0	<10.0	<10.0	<10.0	64.0
FS02	12/05/2024	1	<0.050	<0.300	<10.0	<10.0	<10.0	<10.0	<10.0	64.0
FS03	12/05/2024	1	<0.050	<0.300	<10.0	<10.0	<10.0	<10.0	<10.0	96.0
FS04	12/06/2024	0.5	<0.050	<0.300	<10.0	<10.0	<10.0	<10.0	<10.0	432
FS05	12/06/2024	0.5	<0.050	<0.300	<10.0	17.9	<10.0	17.9	17.9	112
FS06	12/06/2024	0.5	<0.050	<0.300	<10.0	<10.0	<10.0	<10.0	<10.0	64.0
FS07	12/06/2024	0.5	<0.050	<0.300	<10.0	15.2	<10.0	15.2	15.2	80.0
FS08	12/06/2024	0.5	<0.050	<0.300	<10.0	43.0	<10.0	43.0	43.0	80.0
FS09	12/06/2024	0.5	<0.050	<0.300	<10.0	403	<10.0	403	403	112
FS09A	12/10/2024	1	<0.050	<0.300	<10.0	<10.0	<10.0	<10.0	<10.0	32.0
FS10	12/06/2024	0.5	<0.050	<0.300	<10.0	<10.0	<10.0	<10.0	<10.0	64.0
SW01	12/05/2024	0-1	<0.050	<0.300	<10.0	<10.0	<10.0	<10.0	<10.0	80.0
SW02	12/06/2024	0-1	<0.050	<0.300	<10.0	<10.0	<10.0	<10.0	<10.0	240
SW03	12/10/2024	0-1	<0.050	<0.300	<10.0	<10.0	<10.0	<10.0	<10.0	32.0

Notes:

bgs: below ground surface

mg/kg: milligrams per kilogram

NMOCD: New Mexico Oil Conservation Division

BTEX: Benzene, Toluene, Ethylbenzene, and Xylenes

Concentrations in **bold** exceed the NMOCD Table I Closure Criteria or reclamation requirement where applicable.

GRO: Gasoline Range Organics

DRO: Diesel Range Organics

ORO: Oil Range Organics

TPH: Total Petroleum Hydrocarbon

NMAC: New Mexico Administrative Code

Grey text indicates soil sample removed during excavation activities



APPENDIX A

Referenced Well Records



3. ANNULAR MATERIAL

PAGE 1 OF 2

[illegible]

WR-20 WELL RECORD & LOG (Version 06/08/2012)

Released to Imaging: 1/2/2025 1:30:05 PM



APPENDIX B

Photographic Log

**Photographic Log**

XTO Energy, Inc
 PLU 21 DTD CVB
 nAPP2428834682



Photograph: 1 Date: 11/25/2024
 Description: Site Assessment activities
 View: North



Photograph: 2 Date: 12/5/2024
 Description: Excavation activities
 View: Southeast



Photograph: 3 Date: 12/6/2024
 Description: Excavation activities
 View: Southeast


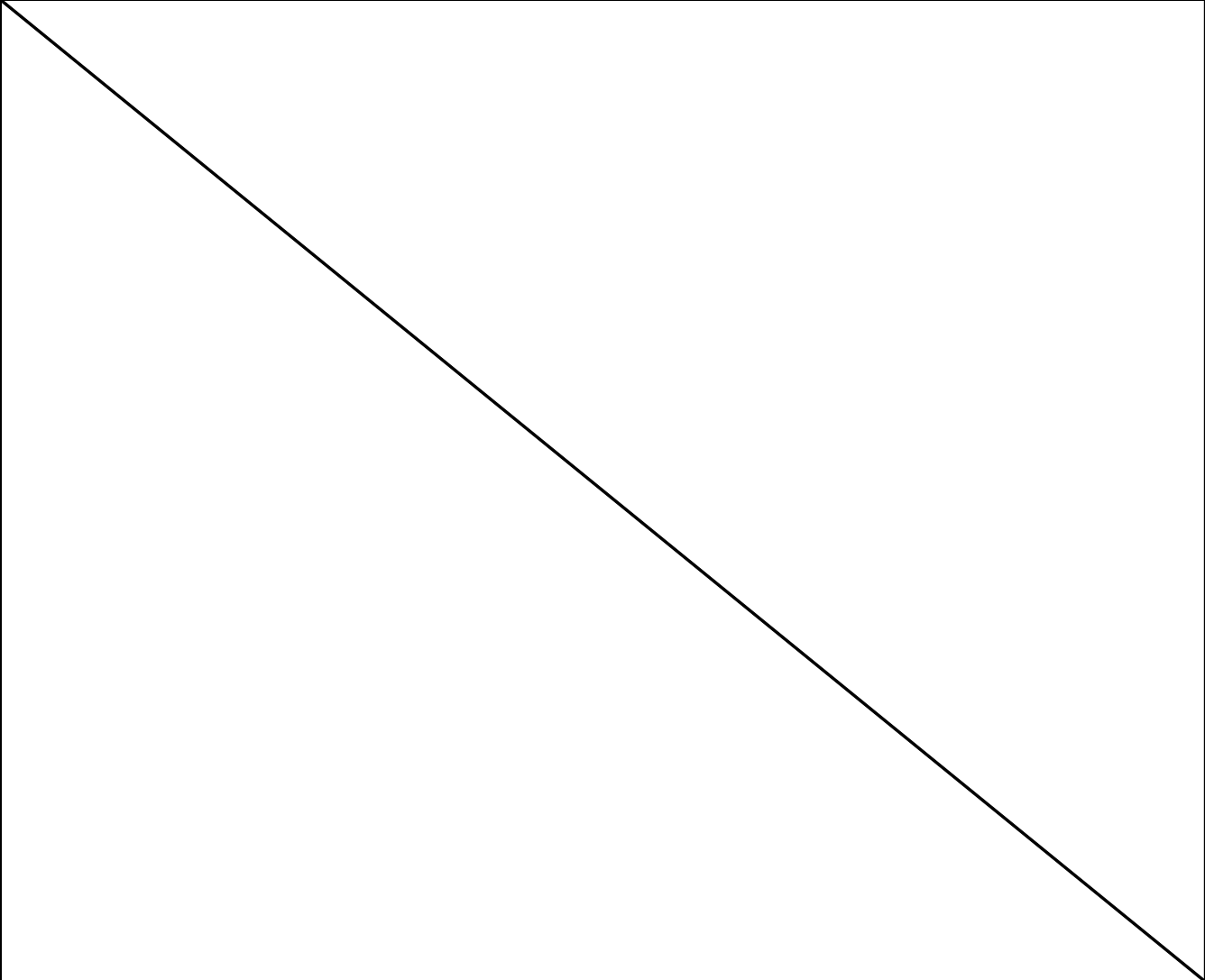


Photograph: 4 Date: 12/10/2024
 Description: Excavation activities
 View: South



APPENDIX C

Lithologic Soil Sampling Logs

		Sample Name: BH01		Date: 12/5/2024				
		Site Name: PLU 21 DTD CVB						
		Incident Number: nAPP2428834682						
		Job Number: 03C1558564						
LITHOLOGIC / SOIL SAMPLING LOG				Logged By: US		Method: Hand Auger		
Coordinates: 32.210706, -103.894256				Hole Diameter: 3"		Total Depth: 1'		
Comments: Field screening conducted with HACH Chloride Test Strips and PID for chloride and vapor, respectively. Chloride test performed with 1:4 dilution factor of soil to distilled water. A 40% correction factor is included.								
Moisture Content	Chloride (ppm)	Vapor (ppm)	Staining	Sample ID	Sample Depth (ft bgs)	Depth (ft bgs)	USCS/Rock Symbol	Lithologic Descriptions
						0	CCHE	(0-1') CALICHE, tan, fine grained, with silt, no odor
Drv	2514	1.5	N	BH01	0.5'			
Drv	<168	0.5	N	BH01A	1'	1'		
Total Depth @ 1-foot bgs								
								



APPENDIX D

Laboratory Analytical Reports & Chain of Custody Documentation



PHONE (575) 393-2326 ° 101 E. MARLAND ° HOBBS, NM 88240

December 09, 2024

TRACY HILLARD

ENSOLUM

3122 NATIONAL PARKS HWY

CARLSBAD, NM 88220

RE: PLU 21 DTD CVB

Enclosed are the results of analyses for samples received by the laboratory on 12/06/24 15:54.

Cardinal Laboratories is accredited through Texas NELAP under certificate number TX-C24-00112. Accreditation applies to drinking water, non-potable water and solid and chemical materials. All accredited analytes are denoted by an asterisk (*). For a complete list of accredited analytes and matrices visit the TCEQ website at www.tceq.texas.gov/field/qa/lab_accred_certif.html.

Cardinal Laboratories is accredited through the State of Colorado Department of Public Health and Environment for:

Method EPA 552.2	Haloacetic Acids (HAA-5)
Method EPA 524.2	Total Trihalomethanes (TTHM)
Method EPA 524.4	Regulated VOCs (V1, V2, V3)

Accreditation applies to public drinking water matrices.

This report meets NELAP requirements and is made up of a cover page, analytical results, and a copy of the original chain-of-custody. If you have any questions concerning this report, please feel free to contact me.

Sincerely,

A handwritten signature in black ink that reads "Celey D. Keene". The signature is written in a cursive style with a large, stylized 'C' and 'K'.

Celey D. Keene

Lab Director/Quality Manager



PHONE (575) 393-2326 ° 101 E. MARLAND ° HOBBS, NM 88240

Analytical Results For:

ENSOLUM
TRACY HILLARD
3122 NATIONAL PARKS HWY
CARLSBAD NM, 88220
Fax To:

Received: 12/06/2024
Reported: 12/09/2024
Project Name: PLU 21 DTD CVB
Project Number: 03C1558564
Project Location: XTO 32.21130, -103.89296

Sampling Date: 12/05/2024
Sampling Type: Soil
Sampling Condition: Cool & Intact
Sample Received By: Shalyn Rodriguez

Sample ID: BH 01 (H247438-01)

BTEx 8021B		mg/kg		Analyzed By: JH					
Analyte	Result	Reporting Limit	Analyzed	Method Blank	BS	% Recovery	True Value QC	RPD	Qualifier
Benzene*	<0.050	0.050	12/07/2024	ND	2.16	108	2.00	7.09	
Toluene*	<0.050	0.050	12/07/2024	ND	2.06	103	2.00	5.37	
Ethylbenzene*	<0.050	0.050	12/07/2024	ND	2.06	103	2.00	4.39	
Total Xylenes*	<0.150	0.150	12/07/2024	ND	6.12	102	6.00	4.27	
Total BTEX	<0.300	0.300	12/07/2024	ND					

Surrogate: 4-Bromofluorobenzene (PID) 98.6 % 71.5-134

Chloride, SM4500Cl-B		mg/kg		Analyzed By: KV						
Analyte	Result	Reporting Limit	Analyzed	Method Blank	BS	% Recovery	True Value QC	RPD	Qualifier	
Chloride	1630	16.0	12/09/2024	ND	432	108	400	3.64		

TPH 8015M		mg/kg		Analyzed By: MS					
Analyte	Result	Reporting Limit	Analyzed	Method Blank	BS	% Recovery	True Value QC	RPD	Qualifier
GRO C6-C10*	<10.0	10.0	12/06/2024	ND	221	111	200	0.311	
DRO >C10-C28*	<10.0	10.0	12/06/2024	ND	231	116	200	5.43	
EXT DRO >C28-C36	<10.0	10.0	12/06/2024	ND					

Surrogate: 1-Chlorooctane 90.8 % 48.2-134

Surrogate: 1-Chlorooctadecane 94.6 % 49.1-148

Cardinal Laboratories

*=Accredited Analyte

PLEASE NOTE: Liability and Damages. Cardinal's liability and client's exclusive remedy for any claim arising, whether based in contract or tort, shall be limited to the amount paid by client for analyses. All claims, including those for negligence and any other cause whatsoever shall be deemed waived unless made in writing and received by Cardinal within thirty (30) days after completion of the applicable service. In no event shall Cardinal be liable for incidental or consequential damages, including, without limitation, business interruptions, loss of use, or loss of profits incurred by client, its subsidiaries, affiliates or successors arising out of or related to the performance of the services hereunder by Cardinal, regardless of whether such claim is based upon any of the above stated reasons or otherwise. Results relate only to the samples identified above. This report shall not be reproduced except in full with written approval of Cardinal Laboratories.

Celey D. Keene, Lab Director/Quality Manager



PHONE (575) 393-2326 ° 101 E. MARLAND ° HOBBS, NM 88240

Analytical Results For:

ENSOLUM
TRACY HILLARD
3122 NATIONAL PARKS HWY
CARLSBAD NM, 88220
Fax To:

Received: 12/06/2024
Reported: 12/09/2024
Project Name: PLU 21 DTD CVB
Project Number: 03C1558564
Project Location: XTO 32.21130, -103.89296

Sampling Date: 12/05/2024
Sampling Type: Soil
Sampling Condition: Cool & Intact
Sample Received By: Shalyn Rodriguez

Sample ID: BH 01 A (H247438-02)

BTEx 8021B		mg/kg		Analyzed By: JH						
Analyte	Result	Reporting Limit	Analyzed	Method Blank	BS	% Recovery	True Value QC	RPD	Qualifier	
Benzene*	<0.050	0.050	12/07/2024	ND	2.16	108	2.00	7.09		
Toluene*	<0.050	0.050	12/07/2024	ND	2.06	103	2.00	5.37		
Ethylbenzene*	<0.050	0.050	12/07/2024	ND	2.06	103	2.00	4.39		
Total Xylenes*	<0.150	0.150	12/07/2024	ND	6.12	102	6.00	4.27		
Total BTEX	<0.300	0.300	12/07/2024	ND						

Surrogate: 4-Bromofluorobenzene (PID) 99.3 % 71.5-134

Chloride, SM4500Cl-B		mg/kg		Analyzed By: KV						
Analyte	Result	Reporting Limit	Analyzed	Method Blank	BS	% Recovery	True Value QC	RPD	Qualifier	
Chloride	64.0	16.0	12/09/2024	ND	432	108	400	3.64		

TPH 8015M		mg/kg		Analyzed By: MS					
Analyte	Result	Reporting Limit	Analyzed	Method Blank	BS	% Recovery	True Value QC	RPD	Qualifier
GRO C6-C10*	<10.0	10.0	12/06/2024	ND	221	111	200	0.311	
DRO >C10-C28*	<10.0	10.0	12/06/2024	ND	231	116	200	5.43	
EXT DRO >C28-C36	<10.0	10.0	12/06/2024	ND					

Surrogate: 1-Chlorooctane 87.7 % 48.2-134

Surrogate: 1-Chlorooctadecane 90.8 % 49.1-148

Cardinal Laboratories

*=Accredited Analyte

PLEASE NOTE: Liability and Damages. Cardinal's liability and client's exclusive remedy for any claim arising, whether based in contract or tort, shall be limited to the amount paid by client for analyses. All claims, including those for negligence and any other cause whatsoever shall be deemed waived unless made in writing and received by Cardinal within thirty (30) days after completion of the applicable service. In no event shall Cardinal be liable for incidental or consequential damages, including, without limitation, business interruptions, loss of use, or loss of profits incurred by client, its subsidiaries, affiliates or successors arising out of or related to the performance of the services hereunder by Cardinal, regardless of whether such claim is based upon any of the above stated reasons or otherwise. Results relate only to the samples identified above. This report shall not be reproduced except in full with written approval of Cardinal Laboratories.

Celey D. Keene, Lab Director/Quality Manager

PHONE (575) 393-2326 ° 101 E. MARLAND ° HOBBS, NM 88240

Notes and Definitions

ND	Analyte NOT DETECTED at or above the reporting limit
RPD	Relative Percent Difference
**	Samples not received at proper temperature of 6°C or below.
***	Insufficient time to reach temperature.
-	Chloride by SM4500Cl-B does not require samples be received at or below 6°C Samples reported on an as received basis (wet) unless otherwise noted on report

Cardinal Laboratories

*=Accredited Analyte

PLEASE NOTE: Liability and Damages. Cardinal's liability and client's exclusive remedy for any claim arising, whether based in contract or tort, shall be limited to the amount paid by client for analyses. All claims, including those for negligence and any other cause whatsoever shall be deemed waived unless made in writing and received by Cardinal within thirty (30) days after completion of the applicable service. In no event shall Cardinal be liable for incidental or consequential damages, including, without limitation, business interruptions, loss of use, or loss of profits incurred by client, its subsidiaries, affiliates or successors arising out of or related to the performance of the services hereunder by Cardinal, regardless of whether such claim is based upon any of the above stated reasons or otherwise. Results relate only to the samples identified above. This report shall not be reproduced except in full with written approval of Cardinal Laboratories.

A handwritten signature in cursive script, appearing to read "Celey D. Keene", written in black ink.

Celey D. Keene, Lab Director/Quality Manager



CHAIN-OF-CUSTODY AND ANALYSIS REQUEST

101 East Marland, Hobbs, NM 88240
(575) 393-2326 FAX (575) 393-2476

Company Name: Ensolum

BILL TO

ANALYSIS REQUEST

Project manager: Tracy Hillard

P.O. #:

Company: XTO Energy

Address: 3122 National Parks Hwy

Attn: Colton Brown

City: Carlsbad

State: NM ZIP: 88220

Address: 3104 E Greene st.

Phone #: 575-937-3906

City: Carlsbad

Project #: 03C1558564

State: NM

Project Name: PLU 21 DTD CVB

Zip: 88220

Project Location: 32.21130, -103.89296

Phone #:

Sampler Name: Uriel Santillana

Fax #:

FOR LAB USE ONLY

MATRIX

PRESERV.

SAMPLING

Lab I.D.

Sample I.D.

H947438

BH01
BH01A

(G)RAB OR (C)OMP.

CONTAINERS

GROUNDWATER

WASTEWATER

SOIL

OIL

SLUDGE

OTHER :

ACID/BASE:

ICE / COOL

OTHER :

DATE

TIME

S

D

E

S

H

T

P

X

X

X

X

X

X

X

X

X

X

X

X

X

X

X

X

X

X

X

X

X

X

X

X

X

X

X

X

X

X

X

X

X

X

X

X

X

X

X

X

X

X

X

X

X

X

X

X

X

X

X

X

X

X

X

X

X

X

X

X

X

X

X

X

X

X

X

X

X

X

X

X

X

X

X

X

X

X

X

X

X

X

X

X

X

X

X

X

X

X

X

X

X

X

X

X

X

X

X

X

X

X

X

X

X

X

X

X

X

X

X

X

X

X

X

X

X

X

X

X

X

X

X

X

X

X

X

X

X

X

X

X

X

X

X

X

X

X

X

X

X

X

X

X

X

X

X

X

X

X

X

X

X

X

X

X

X

X

X

X

X

X

X

X

X

X

X

X

X

X

X

X

X

X

X

X

X

X

X

X

X

X

X

X

X

X

X

X

X

X

X

X

X

X

X

X

X

X

X

X

X

X

X

X

X

X

X

X

X

X

X

X

X

X

X

X

X

X

X

X

X

X

X

X

X

X

X

X

X

X

X

X

X

X

X

X

X

X

X

X

X

X

X

X

X

X

X

X

X

X

X

X

X

X

X

X

X

X

X

X

X

X

X

X

X

X

X

X

X

X

X

X

X

X

X

X

X

X

X

X

X

X

X

X

X

X

X

X

X

X

X

X

X

X

X



PHONE (575) 393-2326 ° 101 E. MARLAND ° HOBBS, NM 88240

December 09, 2024

TRACY HILLARD

ENSOLUM

3122 NATIONAL PARKS HWY

CARLSBAD, NM 88220

RE: PLU 21 DTD CVB

Enclosed are the results of analyses for samples received by the laboratory on 12/06/24 15:54.

Cardinal Laboratories is accredited through Texas NELAP under certificate number TX-C24-00112. Accreditation applies to drinking water, non-potable water and solid and chemical materials. All accredited analytes are denoted by an asterisk (*). For a complete list of accredited analytes and matrices visit the TCEQ website at www.tceq.texas.gov/field/qa/lab_accred_certif.html.

Cardinal Laboratories is accredited through the State of Colorado Department of Public Health and Environment for:

Method EPA 552.2	Haloacetic Acids (HAA-5)
Method EPA 524.2	Total Trihalomethanes (TTHM)
Method EPA 524.4	Regulated VOCs (V1, V2, V3)

Accreditation applies to public drinking water matrices.

This report meets NELAP requirements and is made up of a cover page, analytical results, and a copy of the original chain-of-custody. If you have any questions concerning this report, please feel free to contact me.

Sincerely,

A handwritten signature in black ink that reads "Celey D. Keene". The signature is written in a cursive style with a large, stylized 'C' and 'K'.

Celey D. Keene

Lab Director/Quality Manager



PHONE (575) 393-2326 ° 101 E. MARLAND ° HOBBS, NM 88240

Analytical Results For:

ENSOLUM
TRACY HILLARD
3122 NATIONAL PARKS HWY
CARLSBAD NM, 88220
Fax To:

Received: 12/06/2024
Reported: 12/09/2024
Project Name: PLU 21 DTD CVB
Project Number: 03C1558564
Project Location: XTO 32.21130, -103.89296

Sampling Date: 12/05/2024
Sampling Type: Soil
Sampling Condition: Cool & Intact
Sample Received By: Shalyn Rodriguez

Sample ID: FS 01 (H247439-01)

BTEx 8021B		mg/kg		Analyzed By: JH						
Analyte	Result	Reporting Limit	Analyzed	Method Blank	BS	% Recovery	True Value QC	RPD	Qualifier	
Benzene*	<0.050	0.050	12/07/2024	ND	2.16	108	2.00	7.09		
Toluene*	<0.050	0.050	12/07/2024	ND	2.06	103	2.00	5.37		
Ethylbenzene*	<0.050	0.050	12/07/2024	ND	2.06	103	2.00	4.39		
Total Xylenes*	<0.150	0.150	12/07/2024	ND	6.12	102	6.00	4.27		
Total BTEx	<0.300	0.300	12/07/2024	ND						

Surrogate: 4-Bromofluorobenzene (PID) 96.5 % 71.5-134

Chloride, SM4500Cl-B		mg/kg		Analyzed By: CT						
Analyte	Result	Reporting Limit	Analyzed	Method Blank	BS	% Recovery	True Value QC	RPD	Qualifier	
Chloride	64.0	16.0	12/09/2024	ND	432	108	400	0.00		

TPH 8015M		mg/kg		Analyzed By: MS					
Analyte	Result	Reporting Limit	Analyzed	Method Blank	BS	% Recovery	True Value QC	RPD	Qualifier
GRO C6-C10*	<10.0	10.0	12/06/2024	ND	221	111	200	0.311	
DRO >C10-C28*	<10.0	10.0	12/06/2024	ND	231	116	200	5.43	
EXT DRO >C28-C36	<10.0	10.0	12/06/2024	ND					

Surrogate: 1-Chlorooctane 88.4 % 48.2-134

Surrogate: 1-Chlorooctadecane 94.4 % 49.1-148

Cardinal Laboratories

*=Accredited Analyte

PLEASE NOTE: Liability and Damages. Cardinal's liability and client's exclusive remedy for any claim arising, whether based in contract or tort, shall be limited to the amount paid by client for analyses. All claims, including those for negligence and any other cause whatsoever shall be deemed waived unless made in writing and received by Cardinal within thirty (30) days after completion of the applicable service. In no event shall Cardinal be liable for incidental or consequential damages, including, without limitation, business interruptions, loss of use, or loss of profits incurred by client, its subsidiaries, affiliates or successors arising out of or related to the performance of the services hereunder by Cardinal, regardless of whether such claim is based upon any of the above stated reasons or otherwise. Results relate only to the samples identified above. This report shall not be reproduced except in full with written approval of Cardinal Laboratories.

Celey D. Keene, Lab Director/Quality Manager



PHONE (575) 393-2326 ° 101 E. MARLAND ° HOBBS, NM 88240

Analytical Results For:

ENSOLUM
TRACY HILLARD
3122 NATIONAL PARKS HWY
CARLSBAD NM, 88220
Fax To:

Received: 12/06/2024
Reported: 12/09/2024
Project Name: PLU 21 DTD CVB
Project Number: 03C1558564
Project Location: XTO 32.21130, -103.89296

Sampling Date: 12/05/2024
Sampling Type: Soil
Sampling Condition: Cool & Intact
Sample Received By: Shalyn Rodriguez

Sample ID: FS 02 (H247439-02)

BTEx 8021B		mg/kg		Analyzed By: JH						
Analyte	Result	Reporting Limit	Analyzed	Method Blank	BS	% Recovery	True Value QC	RPD	Qualifier	
Benzene*	<0.050	0.050	12/07/2024	ND	2.16	108	2.00	7.09		
Toluene*	<0.050	0.050	12/07/2024	ND	2.06	103	2.00	5.37		
Ethylbenzene*	<0.050	0.050	12/07/2024	ND	2.06	103	2.00	4.39		
Total Xylenes*	<0.150	0.150	12/07/2024	ND	6.12	102	6.00	4.27		
Total BTEX	<0.300	0.300	12/07/2024	ND						

Surrogate: 4-Bromofluorobenzene (PID) 98.1 % 71.5-134

Chloride, SM4500Cl-B		mg/kg		Analyzed By: CT						
Analyte	Result	Reporting Limit	Analyzed	Method Blank	BS	% Recovery	True Value QC	RPD	Qualifier	
Chloride	64.0	16.0	12/09/2024	ND	432	108	400	0.00		

TPH 8015M		mg/kg		Analyzed By: MS					
Analyte	Result	Reporting Limit	Analyzed	Method Blank	BS	% Recovery	True Value QC	RPD	Qualifier
GRO C6-C10*	<10.0	10.0	12/06/2024	ND	221	111	200	0.311	
DRO >C10-C28*	<10.0	10.0	12/06/2024	ND	231	116	200	5.43	
EXT DRO >C28-C36	<10.0	10.0	12/06/2024	ND					

Surrogate: 1-Chlorooctane 97.7 % 48.2-134

Surrogate: 1-Chlorooctadecane 102 % 49.1-148

Cardinal Laboratories

*=Accredited Analyte

PLEASE NOTE: Liability and Damages. Cardinal's liability and client's exclusive remedy for any claim arising, whether based in contract or tort, shall be limited to the amount paid by client for analyses. All claims, including those for negligence and any other cause whatsoever shall be deemed waived unless made in writing and received by Cardinal within thirty (30) days after completion of the applicable service. In no event shall Cardinal be liable for incidental or consequential damages, including, without limitation, business interruptions, loss of use, or loss of profits incurred by client, its subsidiaries, affiliates or successors arising out of or related to the performance of the services hereunder by Cardinal, regardless of whether such claim is based upon any of the above stated reasons or otherwise. Results relate only to the samples identified above. This report shall not be reproduced except in full with written approval of Cardinal Laboratories.

Celey D. Keene, Lab Director/Quality Manager



PHONE (575) 393-2326 ° 101 E. MARLAND ° HOBBS, NM 88240

Analytical Results For:

ENSOLUM
TRACY HILLARD
3122 NATIONAL PARKS HWY
CARLSBAD NM, 88220
Fax To:

Received: 12/06/2024
Reported: 12/09/2024
Project Name: PLU 21 DTD CVB
Project Number: 03C1558564
Project Location: XTO 32.21130, -103.89296

Sampling Date: 12/05/2024
Sampling Type: Soil
Sampling Condition: Cool & Intact
Sample Received By: Shalyn Rodriguez

Sample ID: FS 03 (H247439-03)

BTEX 8021B		mg/kg		Analyzed By: JH						
Analyte	Result	Reporting Limit	Analyzed	Method Blank	BS	% Recovery	True Value QC	RPD	Qualifier	
Benzene*	<0.050	0.050	12/07/2024	ND	2.16	108	2.00	7.09		
Toluene*	<0.050	0.050	12/07/2024	ND	2.06	103	2.00	5.37		
Ethylbenzene*	<0.050	0.050	12/07/2024	ND	2.06	103	2.00	4.39		
Total Xylenes*	<0.150	0.150	12/07/2024	ND	6.12	102	6.00	4.27		
Total BTEX	<0.300	0.300	12/07/2024	ND						

Surrogate: 4-Bromofluorobenzene (PID) 98.8 % 71.5-134

Chloride, SM4500Cl-B		mg/kg		Analyzed By: CT						
Analyte	Result	Reporting Limit	Analyzed	Method Blank	BS	% Recovery	True Value QC	RPD	Qualifier	
Chloride	96.0	16.0	12/09/2024	ND	432	108	400	0.00		

TPH 8015M		mg/kg		Analyzed By: MS					
Analyte	Result	Reporting Limit	Analyzed	Method Blank	BS	% Recovery	True Value QC	RPD	Qualifier
GRO C6-C10*	<10.0	10.0	12/06/2024	ND	221	111	200	0.311	
DRO >C10-C28*	<10.0	10.0	12/06/2024	ND	231	116	200	5.43	
EXT DRO >C28-C36	<10.0	10.0	12/06/2024	ND					

Surrogate: 1-Chlorooctane 85.8 % 48.2-134

Surrogate: 1-Chlorooctadecane 89.9 % 49.1-148

Cardinal Laboratories

*=Accredited Analyte

PLEASE NOTE: Liability and Damages. Cardinal's liability and client's exclusive remedy for any claim arising, whether based in contract or tort, shall be limited to the amount paid by client for analyses. All claims, including those for negligence and any other cause whatsoever shall be deemed waived unless made in writing and received by Cardinal within thirty (30) days after completion of the applicable service. In no event shall Cardinal be liable for incidental or consequential damages, including, without limitation, business interruptions, loss of use, or loss of profits incurred by client, its subsidiaries, affiliates or successors arising out of or related to the performance of the services hereunder by Cardinal, regardless of whether such claim is based upon any of the above stated reasons or otherwise. Results relate only to the samples identified above. This report shall not be reproduced except in full with written approval of Cardinal Laboratories.

Celey D. Keene, Lab Director/Quality Manager



PHONE (575) 393-2326 ° 101 E. MARLAND ° HOBBS, NM 88240

Analytical Results For:

ENSOLUM
TRACY HILLARD
3122 NATIONAL PARKS HWY
CARLSBAD NM, 88220
Fax To:

Received: 12/06/2024
Reported: 12/09/2024
Project Name: PLU 21 DTD CVB
Project Number: 03C1558564
Project Location: XTO 32.21130, -103.89296

Sampling Date: 12/05/2024
Sampling Type: Soil
Sampling Condition: Cool & Intact
Sample Received By: Shalyn Rodriguez

Sample ID: SW 01 (H247439-04)

BTEx 8021B		mg/kg		Analyzed By: JH						
Analyte	Result	Reporting Limit	Analyzed	Method Blank	BS	% Recovery	True Value QC	RPD	Qualifier	
Benzene*	<0.050	0.050	12/07/2024	ND	2.16	108	2.00	7.09		
Toluene*	<0.050	0.050	12/07/2024	ND	2.06	103	2.00	5.37		
Ethylbenzene*	<0.050	0.050	12/07/2024	ND	2.06	103	2.00	4.39		
Total Xylenes*	<0.150	0.150	12/07/2024	ND	6.12	102	6.00	4.27		
Total BTEX	<0.300	0.300	12/07/2024	ND						

Surrogate: 4-Bromofluorobenzene (PID) 99.2 % 71.5-134

Chloride, SM4500Cl-B		mg/kg		Analyzed By: KV						
Analyte	Result	Reporting Limit	Analyzed	Method Blank	BS	% Recovery	True Value QC	RPD	Qualifier	
Chloride	80.0	16.0	12/09/2024	ND	432	108	400	3.64		

TPH 8015M		mg/kg		Analyzed By: MS					
Analyte	Result	Reporting Limit	Analyzed	Method Blank	BS	% Recovery	True Value QC	RPD	Qualifier
GRO C6-C10*	<10.0	10.0	12/06/2024	ND	221	111	200	0.311	
DRO >C10-C28*	<10.0	10.0	12/06/2024	ND	231	116	200	5.43	
EXT DRO >C28-C36	<10.0	10.0	12/06/2024	ND					

Surrogate: 1-Chlorooctane 87.8 % 48.2-134

Surrogate: 1-Chlorooctadecane 91.2 % 49.1-148

Cardinal Laboratories

*=Accredited Analyte

PLEASE NOTE: Liability and Damages. Cardinal's liability and client's exclusive remedy for any claim arising, whether based in contract or tort, shall be limited to the amount paid by client for analyses. All claims, including those for negligence and any other cause whatsoever shall be deemed waived unless made in writing and received by Cardinal within thirty (30) days after completion of the applicable service. In no event shall Cardinal be liable for incidental or consequential damages, including, without limitation, business interruptions, loss of use, or loss of profits incurred by client, its subsidiaries, affiliates or successors arising out of or related to the performance of the services hereunder by Cardinal, regardless of whether such claim is based upon any of the above stated reasons or otherwise. Results relate only to the samples identified above. This report shall not be reproduced except in full with written approval of Cardinal Laboratories.

Celey D. Keene, Lab Director/Quality Manager



PHONE (575) 393-2326 ° 101 E. MARLAND ° HOBBS, NM 88240

Analytical Results For:

ENSOLUM
TRACY HILLARD
3122 NATIONAL PARKS HWY
CARLSBAD NM, 88220
Fax To:

Received: 12/06/2024
Reported: 12/09/2024
Project Name: PLU 21 DTD CVB
Project Number: 03C1558564
Project Location: XTO 32.21130, -103.89296

Sampling Date: 12/06/2024
Sampling Type: Soil
Sampling Condition: Cool & Intact
Sample Received By: Shalyn Rodriguez

Sample ID: FS 05 (H247439-05)

BTEx 8021B		mg/kg		Analyzed By: JH					
Analyte	Result	Reporting Limit	Analyzed	Method Blank	BS	% Recovery	True Value QC	RPD	Qualifier
Benzene*	<0.050	0.050	12/07/2024	ND	2.16	108	2.00	7.09	
Toluene*	<0.050	0.050	12/07/2024	ND	2.06	103	2.00	5.37	
Ethylbenzene*	<0.050	0.050	12/07/2024	ND	2.06	103	2.00	4.39	
Total Xylenes*	<0.150	0.150	12/07/2024	ND	6.12	102	6.00	4.27	
Total BTEX	<0.300	0.300	12/07/2024	ND					

Surrogate: 4-Bromofluorobenzene (PID) 97.8 % 71.5-134

Chloride, SM4500Cl-B		mg/kg		Analyzed By: KV					
Analyte	Result	Reporting Limit	Analyzed	Method Blank	BS	% Recovery	True Value QC	RPD	Qualifier
Chloride	112	16.0	12/09/2024	ND	432	108	400	3.64	

TPH 8015M		mg/kg		Analyzed By: MS					
Analyte	Result	Reporting Limit	Analyzed	Method Blank	BS	% Recovery	True Value QC	RPD	Qualifier
GRO C6-C10*	<10.0	10.0	12/07/2024	ND	221	111	200	0.311	
DRO >C10-C28*	17.9	10.0	12/07/2024	ND	231	116	200	5.43	
EXT DRO >C28-C36	<10.0	10.0	12/07/2024	ND					

Surrogate: 1-Chlorooctane 76.5 % 48.2-134

Surrogate: 1-Chlorooctadecane 79.3 % 49.1-148

Cardinal Laboratories

*=Accredited Analyte

PLEASE NOTE: Liability and Damages. Cardinal's liability and client's exclusive remedy for any claim arising, whether based in contract or tort, shall be limited to the amount paid by client for analyses. All claims, including those for negligence and any other cause whatsoever shall be deemed waived unless made in writing and received by Cardinal within thirty (30) days after completion of the applicable service. In no event shall Cardinal be liable for incidental or consequential damages, including, without limitation, business interruptions, loss of use, or loss of profits incurred by client, its subsidiaries, affiliates or successors arising out of or related to the performance of the services hereunder by Cardinal, regardless of whether such claim is based upon any of the above stated reasons or otherwise. Results relate only to the samples identified above. This report shall not be reproduced except in full with written approval of Cardinal Laboratories.

Celey D. Keene, Lab Director/Quality Manager



PHONE (575) 393-2326 ° 101 E. MARLAND ° HOBBS, NM 88240

Analytical Results For:

ENSOLUM
TRACY HILLARD
3122 NATIONAL PARKS HWY
CARLSBAD NM, 88220
Fax To:

Received: 12/06/2024
Reported: 12/09/2024
Project Name: PLU 21 DTD CVB
Project Number: 03C1558564
Project Location: XTO 32.21130, -103.89296

Sampling Date: 12/06/2024
Sampling Type: Soil
Sampling Condition: Cool & Intact
Sample Received By: Shalyn Rodriguez

Sample ID: FS 06 (H247439-06)

BTEX 8021B		mg/kg		Analyzed By: JH						
Analyte	Result	Reporting Limit	Analyzed	Method Blank	BS	% Recovery	True Value QC	RPD	Qualifier	
Benzene*	<0.050	0.050	12/07/2024	ND	2.16	108	2.00	7.09		
Toluene*	<0.050	0.050	12/07/2024	ND	2.06	103	2.00	5.37		
Ethylbenzene*	<0.050	0.050	12/07/2024	ND	2.06	103	2.00	4.39		
Total Xylenes*	<0.150	0.150	12/07/2024	ND	6.12	102	6.00	4.27		
Total BTEX	<0.300	0.300	12/07/2024	ND						

Surrogate: 4-Bromofluorobenzene (PID) 99.0 % 71.5-134

Chloride, SM4500Cl-B		mg/kg		Analyzed By: KV						
Analyte	Result	Reporting Limit	Analyzed	Method Blank	BS	% Recovery	True Value QC	RPD	Qualifier	
Chloride	64.0	16.0	12/09/2024	ND	432	108	400	3.64		

TPH 8015M		mg/kg		Analyzed By: MS					
Analyte	Result	Reporting Limit	Analyzed	Method Blank	BS	% Recovery	True Value QC	RPD	Qualifier
GRO C6-C10*	<10.0	10.0	12/07/2024	ND	221	111	200	0.311	
DRO >C10-C28*	<10.0	10.0	12/07/2024	ND	231	116	200	5.43	
EXT DRO >C28-C36	<10.0	10.0	12/07/2024	ND					

Surrogate: 1-Chlorooctane 92.0 % 48.2-134

Surrogate: 1-Chlorooctadecane 94.2 % 49.1-148

Cardinal Laboratories

*=Accredited Analyte

PLEASE NOTE: Liability and Damages. Cardinal's liability and client's exclusive remedy for any claim arising, whether based in contract or tort, shall be limited to the amount paid by client for analyses. All claims, including those for negligence and any other cause whatsoever shall be deemed waived unless made in writing and received by Cardinal within thirty (30) days after completion of the applicable service. In no event shall Cardinal be liable for incidental or consequential damages, including, without limitation, business interruptions, loss of use, or loss of profits incurred by client, its subsidiaries, affiliates or successors arising out of or related to the performance of the services hereunder by Cardinal, regardless of whether such claim is based upon any of the above stated reasons or otherwise. Results relate only to the samples identified above. This report shall not be reproduced except in full with written approval of Cardinal Laboratories.

Celey D. Keene, Lab Director/Quality Manager



PHONE (575) 393-2326 ° 101 E. MARLAND ° HOBBS, NM 88240

Analytical Results For:

ENSOLUM
TRACY HILLARD
3122 NATIONAL PARKS HWY
CARLSBAD NM, 88220
Fax To:

Received: 12/06/2024
Reported: 12/09/2024
Project Name: PLU 21 DTD CVB
Project Number: 03C1558564
Project Location: XTO 32.21130, -103.89296

Sampling Date: 12/06/2024
Sampling Type: Soil
Sampling Condition: Cool & Intact
Sample Received By: Shalyn Rodriguez

Sample ID: FS 07 (H247439-07)

BTEX 8021B		mg/kg		Analyzed By: JH						
Analyte	Result	Reporting Limit	Analyzed	Method Blank	BS	% Recovery	True Value QC	RPD	Qualifier	
Benzene*	<0.050	0.050	12/07/2024	ND	2.16	108	2.00	7.09		
Toluene*	<0.050	0.050	12/07/2024	ND	2.06	103	2.00	5.37		
Ethylbenzene*	<0.050	0.050	12/07/2024	ND	2.06	103	2.00	4.39		
Total Xylenes*	<0.150	0.150	12/07/2024	ND	6.12	102	6.00	4.27		
Total BTEX	<0.300	0.300	12/07/2024	ND						

Surrogate: 4-Bromofluorobenzene (PID) 99.3 % 71.5-134

Chloride, SM4500Cl-B		mg/kg		Analyzed By: KV						
Analyte	Result	Reporting Limit	Analyzed	Method Blank	BS	% Recovery	True Value QC	RPD	Qualifier	
Chloride	80.0	16.0	12/09/2024	ND	432	108	400	3.64		

TPH 8015M		mg/kg		Analyzed By: MS					
Analyte	Result	Reporting Limit	Analyzed	Method Blank	BS	% Recovery	True Value QC	RPD	Qualifier
GRO C6-C10*	<10.0	10.0	12/07/2024	ND	221	111	200	0.311	
DRO >C10-C28*	15.2	10.0	12/07/2024	ND	231	116	200	5.43	
EXT DRO >C28-C36	<10.0	10.0	12/07/2024	ND					

Surrogate: 1-Chlorooctane 81.7 % 48.2-134

Surrogate: 1-Chlorooctadecane 83.6 % 49.1-148

Cardinal Laboratories

*=Accredited Analyte

PLEASE NOTE: Liability and Damages. Cardinal's liability and client's exclusive remedy for any claim arising, whether based in contract or tort, shall be limited to the amount paid by client for analyses. All claims, including those for negligence and any other cause whatsoever shall be deemed waived unless made in writing and received by Cardinal within thirty (30) days after completion of the applicable service. In no event shall Cardinal be liable for incidental or consequential damages, including, without limitation, business interruptions, loss of use, or loss of profits incurred by client, its subsidiaries, affiliates or successors arising out of or related to the performance of the services hereunder by Cardinal, regardless of whether such claim is based upon any of the above stated reasons or otherwise. Results relate only to the samples identified above. This report shall not be reproduced except in full with written approval of Cardinal Laboratories.

Celey D. Keene, Lab Director/Quality Manager



PHONE (575) 393-2326 ° 101 E. MARLAND ° HOBBS, NM 88240

Analytical Results For:

ENSOLUM
TRACY HILLARD
3122 NATIONAL PARKS HWY
CARLSBAD NM, 88220
Fax To:

Received: 12/06/2024
Reported: 12/09/2024
Project Name: PLU 21 DTD CVB
Project Number: 03C1558564
Project Location: XTO 32.21130, -103.89296

Sampling Date: 12/06/2024
Sampling Type: Soil
Sampling Condition: Cool & Intact
Sample Received By: Shalyn Rodriguez

Sample ID: FS 08 (H247439-08)

BTEX 8021B		mg/kg		Analyzed By: JH						
Analyte	Result	Reporting Limit	Analyzed	Method Blank	BS	% Recovery	True Value QC	RPD	Qualifier	
Benzene*	<0.050	0.050	12/07/2024	ND	2.16	108	2.00	7.09		
Toluene*	<0.050	0.050	12/07/2024	ND	2.06	103	2.00	5.37		
Ethylbenzene*	<0.050	0.050	12/07/2024	ND	2.06	103	2.00	4.39		
Total Xylenes*	<0.150	0.150	12/07/2024	ND	6.12	102	6.00	4.27		
Total BTEX	<0.300	0.300	12/07/2024	ND						

Surrogate: 4-Bromofluorobenzene (PID) 97.8 % 71.5-134

Chloride, SM4500Cl-B		mg/kg		Analyzed By: KV						
Analyte	Result	Reporting Limit	Analyzed	Method Blank	BS	% Recovery	True Value QC	RPD	Qualifier	
Chloride	80.0	16.0	12/09/2024	ND	432	108	400	3.64		

TPH 8015M		mg/kg		Analyzed By: MS					
Analyte	Result	Reporting Limit	Analyzed	Method Blank	BS	% Recovery	True Value QC	RPD	Qualifier
GRO C6-C10*	<10.0	10.0	12/07/2024	ND	221	111	200	0.311	
DRO >C10-C28*	43.0	10.0	12/07/2024	ND	231	116	200	5.43	
EXT DRO >C28-C36	<10.0	10.0	12/07/2024	ND					

Surrogate: 1-Chlorooctane 90.1 % 48.2-134

Surrogate: 1-Chlorooctadecane 93.1 % 49.1-148

Cardinal Laboratories

*=Accredited Analyte

PLEASE NOTE: Liability and Damages. Cardinal's liability and client's exclusive remedy for any claim arising, whether based in contract or tort, shall be limited to the amount paid by client for analyses. All claims, including those for negligence and any other cause whatsoever shall be deemed waived unless made in writing and received by Cardinal within thirty (30) days after completion of the applicable service. In no event shall Cardinal be liable for incidental or consequential damages, including, without limitation, business interruptions, loss of use, or loss of profits incurred by client, its subsidiaries, affiliates or successors arising out of or related to the performance of the services hereunder by Cardinal, regardless of whether such claim is based upon any of the above stated reasons or otherwise. Results relate only to the samples identified above. This report shall not be reproduced except in full with written approval of Cardinal Laboratories.

Celey D. Keene, Lab Director/Quality Manager



PHONE (575) 393-2326 ° 101 E. MARLAND ° HOBBS, NM 88240

Analytical Results For:

ENSOLUM
TRACY HILLARD
3122 NATIONAL PARKS HWY
CARLSBAD NM, 88220
Fax To:

Received: 12/06/2024
Reported: 12/09/2024
Project Name: PLU 21 DTD CVB
Project Number: 03C1558564
Project Location: XTO 32.21130, -103.89296

Sampling Date: 12/06/2024
Sampling Type: Soil
Sampling Condition: Cool & Intact
Sample Received By: Shalyn Rodriguez

Sample ID: FS 09 (H247439-09)

BTEX 8021B		mg/kg		Analyzed By: JH						
Analyte	Result	Reporting Limit	Analyzed	Method Blank	BS	% Recovery	True Value QC	RPD	Qualifier	
Benzene*	<0.050	0.050	12/07/2024	ND	2.16	108	2.00	7.09		
Toluene*	<0.050	0.050	12/07/2024	ND	2.06	103	2.00	5.37		
Ethylbenzene*	<0.050	0.050	12/07/2024	ND	2.06	103	2.00	4.39		
Total Xylenes*	<0.150	0.150	12/07/2024	ND	6.12	102	6.00	4.27		
Total BTEX	<0.300	0.300	12/07/2024	ND						

Surrogate: 4-Bromofluorobenzene (PID) 100 % 71.5-134

Chloride, SM4500Cl-B		mg/kg		Analyzed By: KV						
Analyte	Result	Reporting Limit	Analyzed	Method Blank	BS	% Recovery	True Value QC	RPD	Qualifier	
Chloride	112	16.0	12/09/2024	ND	432	108	400	3.64		

TPH 8015M		mg/kg		Analyzed By: MS					
Analyte	Result	Reporting Limit	Analyzed	Method Blank	BS	% Recovery	True Value QC	RPD	Qualifier
GRO C6-C10*	<10.0	10.0	12/07/2024	ND	221	111	200	0.311	
DRO >C10-C28*	103	10.0	12/07/2024	ND	231	116	200	5.43	
EXT DRO >C28-C36	<10.0	10.0	12/07/2024	ND					

Surrogate: 1-Chlorooctane 87.6 % 48.2-134

Surrogate: 1-Chlorooctadecane 90.7 % 49.1-148

Cardinal Laboratories

*=Accredited Analyte

PLEASE NOTE: Liability and Damages. Cardinal's liability and client's exclusive remedy for any claim arising, whether based in contract or tort, shall be limited to the amount paid by client for analyses. All claims, including those for negligence and any other cause whatsoever shall be deemed waived unless made in writing and received by Cardinal within thirty (30) days after completion of the applicable service. In no event shall Cardinal be liable for incidental or consequential damages, including, without limitation, business interruptions, loss of use, or loss of profits incurred by client, its subsidiaries, affiliates or successors arising out of or related to the performance of the services hereunder by Cardinal, regardless of whether such claim is based upon any of the above stated reasons or otherwise. Results relate only to the samples identified above. This report shall not be reproduced except in full with written approval of Cardinal Laboratories.

Celey D. Keene, Lab Director/Quality Manager



PHONE (575) 393-2326 ° 101 E. MARLAND ° HOBBS, NM 88240

Analytical Results For:

ENSOLUM
TRACY HILLARD
3122 NATIONAL PARKS HWY
CARLSBAD NM, 88220
Fax To:

Received: 12/06/2024
Reported: 12/09/2024
Project Name: PLU 21 DTD CVB
Project Number: 03C1558564
Project Location: XTO 32.21130, -103.89296

Sampling Date: 12/06/2024
Sampling Type: Soil
Sampling Condition: Cool & Intact
Sample Received By: Shalyn Rodriguez

Sample ID: FS 10 (H247439-10)

BTEX 8021B		mg/kg		Analyzed By: JH						
Analyte	Result	Reporting Limit	Analyzed	Method Blank	BS	% Recovery	True Value QC	RPD	Qualifier	
Benzene*	<0.050	0.050	12/07/2024	ND	2.16	108	2.00	7.09		
Toluene*	<0.050	0.050	12/07/2024	ND	2.06	103	2.00	5.37		
Ethylbenzene*	<0.050	0.050	12/07/2024	ND	2.06	103	2.00	4.39		
Total Xylenes*	<0.150	0.150	12/07/2024	ND	6.12	102	6.00	4.27		
Total BTEX	<0.300	0.300	12/07/2024	ND						

Surrogate: 4-Bromofluorobenzene (PID) 98.5 % 71.5-134

Chloride, SM4500Cl-B		mg/kg		Analyzed By: KV						
Analyte	Result	Reporting Limit	Analyzed	Method Blank	BS	% Recovery	True Value QC	RPD	Qualifier	
Chloride	64.0	16.0	12/09/2024	ND	432	108	400	3.64		

TPH 8015M		mg/kg		Analyzed By: MS					
Analyte	Result	Reporting Limit	Analyzed	Method Blank	BS	% Recovery	True Value QC	RPD	Qualifier
GRO C6-C10*	<10.0	10.0	12/07/2024	ND	221	111	200	0.311	
DRO >C10-C28*	<10.0	10.0	12/07/2024	ND	231	116	200	5.43	
EXT DRO >C28-C36	<10.0	10.0	12/07/2024	ND					

Surrogate: 1-Chlorooctane 77.8 % 48.2-134

Surrogate: 1-Chlorooctadecane 80.1 % 49.1-148

Cardinal Laboratories

*=Accredited Analyte

PLEASE NOTE: Liability and Damages. Cardinal's liability and client's exclusive remedy for any claim arising, whether based in contract or tort, shall be limited to the amount paid by client for analyses. All claims, including those for negligence and any other cause whatsoever shall be deemed waived unless made in writing and received by Cardinal within thirty (30) days after completion of the applicable service. In no event shall Cardinal be liable for incidental or consequential damages, including, without limitation, business interruptions, loss of use, or loss of profits incurred by client, its subsidiaries, affiliates or successors arising out of or related to the performance of the services hereunder by Cardinal, regardless of whether such claim is based upon any of the above stated reasons or otherwise. Results relate only to the samples identified above. This report shall not be reproduced except in full with written approval of Cardinal Laboratories.

Celey D. Keene, Lab Director/Quality Manager



PHONE (575) 393-2326 ° 101 E. MARLAND ° HOBBS, NM 88240

Analytical Results For:

ENSOLUM
TRACY HILLARD
3122 NATIONAL PARKS HWY
CARLSBAD NM, 88220
Fax To:

Received: 12/06/2024
Reported: 12/09/2024
Project Name: PLU 21 DTD CVB
Project Number: 03C1558564
Project Location: XTO 32.21130, -103.89296

Sampling Date: 12/06/2024
Sampling Type: Soil
Sampling Condition: Cool & Intact
Sample Received By: Shalyn Rodriguez

Sample ID: FS 04 (H247439-11)

BTEX 8021B		mg/kg		Analyzed By: JH						
Analyte	Result	Reporting Limit	Analyzed	Method Blank	BS	% Recovery	True Value QC	RPD	Qualifier	
Benzene*	<0.050	0.050	12/07/2024	ND	2.16	108	2.00	7.09		
Toluene*	<0.050	0.050	12/07/2024	ND	2.06	103	2.00	5.37		
Ethylbenzene*	<0.050	0.050	12/07/2024	ND	2.06	103	2.00	4.39		
Total Xylenes*	<0.150	0.150	12/07/2024	ND	6.12	102	6.00	4.27		
Total BTEX	<0.300	0.300	12/07/2024	ND						

Surrogate: 4-Bromofluorobenzene (PID) 98.7 % 71.5-134

Chloride, SM4500Cl-B		mg/kg		Analyzed By: KV						
Analyte	Result	Reporting Limit	Analyzed	Method Blank	BS	% Recovery	True Value QC	RPD	Qualifier	
Chloride	432	16.0	12/09/2024	ND	432	108	400	3.64		

TPH 8015M		mg/kg		Analyzed By: MS					
Analyte	Result	Reporting Limit	Analyzed	Method Blank	BS	% Recovery	True Value QC	RPD	Qualifier
GRO C6-C10*	<10.0	10.0	12/07/2024	ND	221	111	200	0.311	
DRO >C10-C28*	<10.0	10.0	12/07/2024	ND	231	116	200	5.43	
EXT DRO >C28-C36	<10.0	10.0	12/07/2024	ND					

Surrogate: 1-Chlorooctane 92.0 % 48.2-134

Surrogate: 1-Chlorooctadecane 95.5 % 49.1-148

Cardinal Laboratories

*=Accredited Analyte

PLEASE NOTE: Liability and Damages. Cardinal's liability and client's exclusive remedy for any claim arising, whether based in contract or tort, shall be limited to the amount paid by client for analyses. All claims, including those for negligence and any other cause whatsoever shall be deemed waived unless made in writing and received by Cardinal within thirty (30) days after completion of the applicable service. In no event shall Cardinal be liable for incidental or consequential damages, including, without limitation, business interruptions, loss of use, or loss of profits incurred by client, its subsidiaries, affiliates or successors arising out of or related to the performance of the services hereunder by Cardinal, regardless of whether such claim is based upon any of the above stated reasons or otherwise. Results relate only to the samples identified above. This report shall not be reproduced except in full with written approval of Cardinal Laboratories.

Celey D. Keene, Lab Director/Quality Manager



PHONE (575) 393-2326 ° 101 E. MARLAND ° HOBBS, NM 88240

Analytical Results For:

ENSOLUM
TRACY HILLARD
3122 NATIONAL PARKS HWY
CARLSBAD NM, 88220
Fax To:

Received: 12/06/2024
Reported: 12/09/2024
Project Name: PLU 21 DTD CVB
Project Number: 03C1558564
Project Location: XTO 32.21130, -103.89296

Sampling Date: 12/06/2024
Sampling Type: Soil
Sampling Condition: Cool & Intact
Sample Received By: Shalyn Rodriguez

Sample ID: SW 02 (H247439-12)

BTEX 8021B		mg/kg		Analyzed By: JH						
Analyte	Result	Reporting Limit	Analyzed	Method Blank	BS	% Recovery	True Value QC	RPD	Qualifier	
Benzene*	<0.050	0.050	12/07/2024	ND	2.17	109	2.00	7.11		
Toluene*	<0.050	0.050	12/07/2024	ND	2.23	112	2.00	4.53		
Ethylbenzene*	<0.050	0.050	12/07/2024	ND	2.18	109	2.00	3.61		
Total Xylenes*	<0.150	0.150	12/07/2024	ND	6.83	114	6.00	2.83		
Total BTEX	<0.300	0.300	12/07/2024	ND						

Surrogate: 4-Bromofluorobenzene (PID) 105 % 71.5-134

Chloride, SM4500Cl-B		mg/kg		Analyzed By: KV						
Analyte	Result	Reporting Limit	Analyzed	Method Blank	BS	% Recovery	True Value QC	RPD	Qualifier	
Chloride	240	16.0	12/09/2024	ND	432	108	400	3.64		

TPH 8015M		mg/kg		Analyzed By: MS					
Analyte	Result	Reporting Limit	Analyzed	Method Blank	BS	% Recovery	True Value QC	RPD	Qualifier
GRO C6-C10*	<10.0	10.0	12/07/2024	ND	221	111	200	0.311	
DRO >C10-C28*	<10.0	10.0	12/07/2024	ND	231	116	200	5.43	
EXT DRO >C28-C36	<10.0	10.0	12/07/2024	ND					

Surrogate: 1-Chlorooctane 92.7 % 48.2-134

Surrogate: 1-Chlorooctadecane 95.8 % 49.1-148

Cardinal Laboratories

*=Accredited Analyte

PLEASE NOTE: Liability and Damages. Cardinal's liability and client's exclusive remedy for any claim arising, whether based in contract or tort, shall be limited to the amount paid by client for analyses. All claims, including those for negligence and any other cause whatsoever shall be deemed waived unless made in writing and received by Cardinal within thirty (30) days after completion of the applicable service. In no event shall Cardinal be liable for incidental or consequential damages, including, without limitation, business interruptions, loss of use, or loss of profits incurred by client, its subsidiaries, affiliates or successors arising out of or related to the performance of the services hereunder by Cardinal, regardless of whether such claim is based upon any of the above stated reasons or otherwise. Results relate only to the samples identified above. This report shall not be reproduced except in full with written approval of Cardinal Laboratories.

Celey D. Keene, Lab Director/Quality Manager



PHONE (575) 393-2326 ° 101 E. MARLAND ° HOBBS, NM 88240

Notes and Definitions

- ND Analyte NOT DETECTED at or above the reporting limit
- RPD Relative Percent Difference
- ** Samples not received at proper temperature of 6°C or below.
- *** Insufficient time to reach temperature.
- Chloride by SM4500Cl-B does not require samples be received at or below 6°C
Samples reported on an as received basis (wet) unless otherwise noted on report

Cardinal Laboratories

*=Accredited Analyte

PLEASE NOTE: Liability and Damages. Cardinal's liability and client's exclusive remedy for any claim arising, whether based in contract or tort, shall be limited to the amount paid by client for analyses. All claims, including those for negligence and any other cause whatsoever shall be deemed waived unless made in writing and received by Cardinal within thirty (30) days after completion of the applicable service. In no event shall Cardinal be liable for incidental or consequential damages, including, without limitation, business interruptions, loss of use, or loss of profits incurred by client, its subsidiaries, affiliates or successors arising out of or related to the performance of the services hereunder by Cardinal, regardless of whether such claim is based upon any of the above stated reasons or otherwise. Results relate only to the samples identified above. This report shall not be reproduced except in full with written approval of Cardinal Laboratories.

A handwritten signature in black ink, appearing to read "Celey D. Keene".

Celey D. Keene, Lab Director/Quality Manager



CHAIN-OF-CUSTODY AND ANALYSIS REQUEST

101 East Marland, Hobbs, NM 88240
(575) 393-2326 FAX (575) 393-2476

Company Name: Ensolum

Project manager: Tracy Hillard

Address: 3122 National Parks Hwy

City: Carlsbad State: NM ZIP: 88220

Phone #: 575-937-3906

Project #: 03C1558564

Project Name: PLU 21 DTD CVB

Project Location: 32.21130, -103.89296

Sample Name: Uriel Santillana

Lab I.D.

BILL TO

P.O. #: Company: XTO Energy

Attn: Colton Brown

Address: 3104 E Greene st.

City: Carlsbad

State: NM Zip: 88220

Phone #:

Fax #:

ANALYSIS REQUEST

City: Carlsbad		State: NM		ZIP: 88220		Company: XTO Energy																																																																																																																																																																																																																																																																																																																																																																																																																																																																																																																																																																																																																																																																													
Phone #: 575-937-3906						Attn: Colton Brown																																																																																																																																																																																																																																																																																																																																																																																																																																																																																																																																																																																																																																																																													
Project #:		03C1558564				Address: 3104 E Greene st.																																																																																																																																																																																																																																																																																																																																																																																																																																																																																																																																																																																																																																																																													
Project Name:		PLU 21 DTD CVB				City: Carlsbad																																																																																																																																																																																																																																																																																																																																																																																																																																																																																																																																																																																																																																																																													
Project Location:		32.21130, -103.89296				State: NM Zip: 88220																																																																																																																																																																																																																																																																																																																																																																																																																																																																																																																																																																																																																																																																													
Sampler Name:		Uriel Santillana				Phone #:																																																																																																																																																																																																																																																																																																																																																																																																																																																																																																																																																																																																																																																																													
						Fax #:																																																																																																																																																																																																																																																																																																																																																																																																																																																																																																																																																																																																																																																																													
FOR LAB USE ONLY																																																																																																																																																																																																																																																																																																																																																																																																																																																																																																																																																																																																																																																																																			
Lab I.D.				MATRIX		PRESERV.		SAMPLING																																																																																																																																																																																																																																																																																																																																																																																																																																																																																																																																																																																																																																																																											
Sample I.D.		(G)RAB OR (C)OMP.		# CONTAINERS		GROUNDWATER		WASTEWATER		SOIL		OIL		SLUDGE		OTHER : ACID/BASE:		ICE / COOL OTHER :		DATE		TIME		CHLORIDES		T P H		B T E X																																																																																																																																																																																																																																																																																																																																																																																																																																																																																																																																																																																																																																																							

RELEASE NOTE: Liability and Damages. Cardinal's liability and damages are limited to the amount paid by the client for the analysis. All claims, including those for negligence and any other cause whatsoever shall be deemed waived unless made in writing and received by Cardinal within 30 days after completion of the service. In no event shall Cardinal be liable for incidental or consequential damages, including without limitation, business interruptions, loss of use, or loss of profits, incurred by client, its subsidiaries, affiliates or successors arising out of or related to the performance of services hereunder by Cardinal, regardless of whether such claim is based upon any of the above stated reasons or otherwise.

Inquired By: [Signature]

Date: 12/10/24

Time: 1554

Received By: [Signature]

Date: 12/10/24

Time: 1554

Observed Temp. °C 4.00

Corrected Temp. °C 4.00

FORM-006 R 3.2 10/07/21

† Cardinal cannot accept verbal changes. Please email changes to celey.keene@cardinallabsnm.com

Verbal Result: <input type="checkbox"/> Yes <input type="checkbox"/> No Add'l Phone #:	Incident ID: nAPP242834682 Cost Code: 223091001
Turnaround Time: <input checked="" type="checkbox"/> Rush <input type="checkbox"/> Standard Thermometer ID #140 Correction Factor -0.00	Standard <input type="checkbox"/> Backfill (only) Sample Condition Observed Temp. °C Corrected Temp. °C



CHAIN-OF-CUSTODY AND ANALYSIS REQUEST

101 East Marland, Hobbs, NM 88240
(575) 393-2326 FAX (575) 393-2476

BILL TO

ANALYSIS REQUEST

Company Name: Ensolum

Project manager: Tracy Hillard

Address: 3122 National Parks Hwy

City: Carlsbad State: NM ZIP: 88220

Phone #: 575-937-3906

Project #: 03C1558564

Project Name: PLU 21 DTD CVB

Project Location: 32.21130, -103.89296

Sampler Name: Uriel Santillana

Lab I.D.

FOR LAB USE ONLY

(G)RAB OR (C)OMP.

CONTAINERS

GROUNDWATER

WASTEWATER

SOIL

OIL

SLUDGE

OTHER :

ACID/BASE:

ICE / COOL

OTHER :

DATE

TIME

DATE

TIME

DATE

TIME

DATE

TIME

DATE

TIME

DATE

TIME

DATE

TIME

DATE

TIME

DATE

TIME

DATE

TIME

DATE

TIME

DATE

TIME

Sample I.D.

H247439

11

F504

SW02

C 1

C 2

X

X

X

X

X

X

X

X

X

X

X

X

X

X

X

X

X

X

X

X

X

X

X

X

X

X

X

X

X

X

X

X

X

PLEASE NOTE: Liability and Damages. Cardinal's liability and client's exclusive remedy for any claim arising out of or related to the performance of services hereunder by Cardinal, regardless of whether such claim is based upon any of the above stated reasons or otherwise, shall be limited to the amount paid by the client for the analysis. All claims, including those for negligence and any other cause whatsoever shall be deemed waived unless made in writing and received by Cardinal within 30 days after completion of the analysis. In no event shall Cardinal be liable for incidental or consequential damages, including without limitation, business interruptions, loss of use, or loss of profits incurred by client, its subsidiaries, affiliates or successors arising out of or related to the performance of services hereunder by Cardinal, regardless of whether such claim is based upon any of the above stated reasons or otherwise.

Inquired By: [Signature]

Date: 12/15/14

Received By: [Signature]

Verbal Result: ☐ Yes ☐ No

Add'l Phone #:

Inquired By: [Signature]

Date: 12/15/14

Received By: [Signature]

Remarks: Incident ID: nAPP242834682 Cost Code: 2233091001

Delivered By: (Circle One)

Observed Temp. °C

Corrected Temp. °C

Sample Condition

CHECKED BY: [Signature]

Turnaround Time: 24 hr

Standard

Bacteria (only) Sample Condition

Thermometer ID #140

Correction Factor

Observed Temp. °C

Corrected Temp. °C

FORM-006 R 3.2 10/07/21

† Cardinal cannot accept verbal changes. Please email changes to celey.keene@cardinallabsnm.com

2-2



APPENDIX E

NMOCD Notifications

From: [Hamlet, Robert, EMNRD](#)
To: [Brown, Colton S](#)
Cc: [Dirkx, Kaylan](#); kailee.smith@exxonmobil.com; robert.d.woodall@exxonmobil.com; ashley.a.mcafee@exxonmobil.com; [Tacoma Morrissey](#); [Ben Belill](#); [Tracy Hillard](#); [Bratcher, Michael, EMNRD](#); [Wells, Shelly, EMNRD](#)
Subject: XTO - Variance Request - PLU 21 DTD CVB - Incident Number nAPP2428834682
Date: Tuesday, December 10, 2024 9:52:00 AM

[**EXTERNAL EMAIL**]

Colton,

The variance for the 2-business sampling notification is approved. In the future, please make sure 2 full business days notification is given to the OCD in case an environmental representative would like to meet you on site, or the variance request will be denied.

Robert Hamlet • Environmental Specialist - Advanced
Environmental Bureau
EMNRD - Oil Conservation Division
506 W. Texas Ave. | Artesia, NM 88210
575.909.0302 | robert.hamlet@emnrd.nm.gov
<http://www.emnrd.state.nm.us/OCD/>



From: Wells, Shelly, EMNRD <Shelly.Wells@emnrd.nm.gov>
Sent: Monday, December 9, 2024 4:01 PM
To: Hamlet, Robert, EMNRD <Robert.Hamlet@emnrd.nm.gov>
Cc: Bratcher, Michael, EMNRD <mike.bratcher@emnrd.nm.gov>
Subject: FW: [EXTERNAL] XTO - Variance Request - PLU 21 DTD CVB - Incident Number nAPP2428834682

From: Brown, Colton S <colton.s.brown@exxonmobil.com>
Sent: Monday, December 9, 2024 3:42 PM
To: Enviro, OCD, EMNRD <OCD.Enviro@emnrd.nm.gov>
Cc: Dirkx, Kaylan <kaylan.dirkx@exxonmobil.com>; Smith, Kailee /C <kailee.smith@exxonmobil.com>; Woodall, Robert D <robert.d.woodall@exxonmobil.com>; McAfee, Ashley A <ashley.a.mcafee@exxonmobil.com>; Tacoma Morrissey <tmorrissey@ensolum.com>; Ben Belill <bbelill@ensolum.com>; Tracy Hillard <thillard@ensolum.com>
Subject: [EXTERNAL] XTO - Variance Request - PLU 21 DTD CVB - Incident Number nAPP2428834682

CAUTION: This email originated outside of our organization. Exercise caution prior to clicking on links or opening attachments.

XTO is requesting a variance of the 48-hr sampling notification (C-141N) requirement for a spill at PLU 21 DTD CVB - Incident Number nAPP2428834682. A sampling notification was submitted for December 2– December 6, 2024, however, laboratory analytical data indicated additional excavation was needed. In order to submit a remediation work plan or closure request required in 19.15.29.12.B. (1) NMAC by the deadline, one additional day of excavation and sampling is needed. XTO requests the additional samples collected may be used for closure, providing that they meet applicable closure limits. XTO requests to complete sampling tomorrow, December 10, 2024. Following approval of the variance, a C-141N will be submitted via the portal and the correspondence will be included in the final report.

Thank You

Colton Brown
Wastewater Advisor

ExxonMobil Upstream Company
3104 E. Greene St.
Carlsbad, NM 88220
Cell Phone: 575-988-2390
colton.s.brown@exxonmobil.com

-

**Photographic Log**

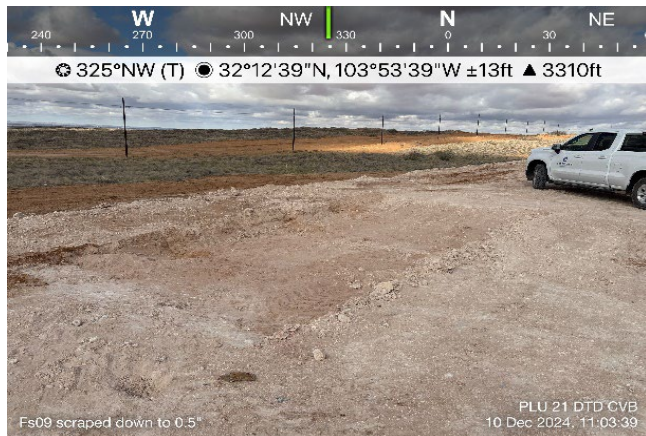
XTO Energy, Inc
 PLU 21 DTD CVB
 nAPP2428834682



Photograph: 1 Date: 12/6/2024
 Description: Sampling activities of FS09
 View: Southwest



Photograph: 2 Date: 12/10/2024
 Description: Excavation activities of FS09A
 View: Southwest



Photograph: 3 Date: 12/10/2024
 Description: Excavation activities of FS09A
 View: Northwest



PHONE (575) 393-2326 ° 101 E. MARLAND ° HOBBS, NM 88240

December 11, 2024

TRACY HILLARD

ENSOLUM

3122 NATIONAL PARKS HWY

CARLSBAD, NM 88220

RE: PLU 21 DTD CVB

Enclosed are the results of analyses for samples received by the laboratory on 12/10/24 12:31.

Cardinal Laboratories is accredited through Texas NELAP under certificate number TX-C24-00112. Accreditation applies to drinking water, non-potable water and solid and chemical materials. All accredited analytes are denoted by an asterisk (*). For a complete list of accredited analytes and matrices visit the TCEQ website at www.tceq.texas.gov/field/qa/lab_accred_certif.html.

Cardinal Laboratories is accredited through the State of Colorado Department of Public Health and Environment for:

Method EPA 552.2	Haloacetic Acids (HAA-5)
Method EPA 524.2	Total Trihalomethanes (TTHM)
Method EPA 524.4	Regulated VOCs (V1, V2, V3)

Accreditation applies to public drinking water matrices.

This report meets NELAP requirements and is made up of a cover page, analytical results, and a copy of the original chain-of-custody. If you have any questions concerning this report, please feel free to contact me.

Sincerely,

A handwritten signature in black ink that reads "Celey D. Keene". The signature is written in a cursive style with a large, stylized 'C' and 'K'.

Celey D. Keene

Lab Director/Quality Manager



PHONE (575) 393-2326 ° 101 E. MARLAND ° HOBBS, NM 88240

Analytical Results For:

ENSOLUM
TRACY HILLARD
3122 NATIONAL PARKS HWY
CARLSBAD NM, 88220
Fax To:

Received: 12/10/2024
Reported: 12/11/2024
Project Name: PLU 21 DTD CVB
Project Number: 03C1558564
Project Location: XTO 32.21130, -103.89296

Sampling Date: 12/10/2024
Sampling Type: Soil
Sampling Condition: Cool & Intact
Sample Received By: Shalyn Rodriguez

Sample ID: FS 09 (H247476-01)

BTEx 8021B		mg/kg		Analyzed By: JH					
Analyte	Result	Reporting Limit	Analyzed	Method Blank	BS	% Recovery	True Value QC	RPD	Qualifier
Benzene*	<0.050	0.050	12/10/2024	ND	1.92	96.0	2.00	4.60	
Toluene*	<0.050	0.050	12/10/2024	ND	1.94	97.1	2.00	3.56	
Ethylbenzene*	<0.050	0.050	12/10/2024	ND	1.97	98.4	2.00	2.47	
Total Xylenes*	<0.150	0.150	12/10/2024	ND	5.89	98.2	6.00	2.21	
Total BTEX	<0.300	0.300	12/10/2024	ND					

Surrogate: 4-Bromofluorobenzene (PID) 100 % 71.5-134

Chloride, SM4500Cl-B		mg/kg		Analyzed By: CT					
Analyte	Result	Reporting Limit	Analyzed	Method Blank	BS	% Recovery	True Value QC	RPD	Qualifier
Chloride	32.0	16.0	12/10/2024	ND	448	112	400	3.64	

TPH 8015M		mg/kg		Analyzed By: MS					
Analyte	Result	Reporting Limit	Analyzed	Method Blank	BS	% Recovery	True Value QC	RPD	Qualifier
GRO C6-C10*	<10.0	10.0	12/10/2024	ND	216	108	200	0.482	
DRO >C10-C28*	<10.0	10.0	12/10/2024	ND	211	105	200	0.802	
EXT DRO >C28-C36	<10.0	10.0	12/10/2024	ND					

Surrogate: 1-Chlorooctane 70.5 % 48.2-134

Surrogate: 1-Chlorooctadecane 73.1 % 49.1-148

Cardinal Laboratories

*=Accredited Analyte

PLEASE NOTE: Liability and Damages. Cardinal's liability and client's exclusive remedy for any claim arising, whether based in contract or tort, shall be limited to the amount paid by client for analyses. All claims, including those for negligence and any other cause whatsoever shall be deemed waived unless made in writing and received by Cardinal within thirty (30) days after completion of the applicable service. In no event shall Cardinal be liable for incidental or consequential damages, including, without limitation, business interruptions, loss of use, or loss of profits incurred by client, its subsidiaries, affiliates or successors arising out of or related to the performance of the services hereunder by Cardinal, regardless of whether such claim is based upon any of the above stated reasons or otherwise. Results relate only to the samples identified above. This report shall not be reproduced except in full with written approval of Cardinal Laboratories.

Celey D. Keene, Lab Director/Quality Manager



PHONE (575) 393-2326 ° 101 E. MARLAND ° HOBBS, NM 88240

Analytical Results For:

ENSOLUM
TRACY HILLARD
3122 NATIONAL PARKS HWY
CARLSBAD NM, 88220
Fax To:

Received: 12/10/2024
Reported: 12/11/2024
Project Name: PLU 21 DTD CVB
Project Number: 03C1558564
Project Location: XTO 32.21130, -103.89296

Sampling Date: 12/10/2024
Sampling Type: Soil
Sampling Condition: Cool & Intact
Sample Received By: Shalyn Rodriguez

Sample ID: SW 03 (H247476-02)

BTEx 8021B		mg/kg		Analyzed By: JH					
Analyte	Result	Reporting Limit	Analyzed	Method Blank	BS	% Recovery	True Value QC	RPD	Qualifier
Benzene*	<0.050	0.050	12/10/2024	ND	1.92	96.0	2.00	4.60	
Toluene*	<0.050	0.050	12/10/2024	ND	1.94	97.1	2.00	3.56	
Ethylbenzene*	<0.050	0.050	12/10/2024	ND	1.97	98.4	2.00	2.47	
Total Xylenes*	<0.150	0.150	12/10/2024	ND	5.89	98.2	6.00	2.21	
Total BTEX	<0.300	0.300	12/10/2024	ND					

Surrogate: 4-Bromofluorobenzene (PID) 99.0 % 71.5-134

Chloride, SM4500Cl-B		mg/kg		Analyzed By: CT					
Analyte	Result	Reporting Limit	Analyzed	Method Blank	BS	% Recovery	True Value QC	RPD	Qualifier
Chloride	32.0	16.0	12/10/2024	ND	432	108	400	0.00	

TPH 8015M		mg/kg		Analyzed By: MS					
Analyte	Result	Reporting Limit	Analyzed	Method Blank	BS	% Recovery	True Value QC	RPD	Qualifier
GRO C6-C10*	<10.0	10.0	12/10/2024	ND	216	108	200	0.482	
DRO >C10-C28*	<10.0	10.0	12/10/2024	ND	211	105	200	0.802	
EXT DRO >C28-C36	<10.0	10.0	12/10/2024	ND					

Surrogate: 1-Chlorooctane 80.3 % 48.2-134

Surrogate: 1-Chlorooctadecane 85.2 % 49.1-148

Cardinal Laboratories

*=Accredited Analyte

PLEASE NOTE: Liability and Damages. Cardinal's liability and client's exclusive remedy for any claim arising, whether based in contract or tort, shall be limited to the amount paid by client for analyses. All claims, including those for negligence and any other cause whatsoever shall be deemed waived unless made in writing and received by Cardinal within thirty (30) days after completion of the applicable service. In no event shall Cardinal be liable for incidental or consequential damages, including, without limitation, business interruptions, loss of use, or loss of profits incurred by client, its subsidiaries, affiliates or successors arising out of or related to the performance of the services hereunder by Cardinal, regardless of whether such claim is based upon any of the above stated reasons or otherwise. Results relate only to the samples identified above. This report shall not be reproduced except in full with written approval of Cardinal Laboratories.

Celey D. Keene, Lab Director/Quality Manager



PHONE (575) 393-2326 ° 101 E. MARLAND ° HOBBS, NM 88240

Notes and Definitions

ND	Analyte NOT DETECTED at or above the reporting limit
RPD	Relative Percent Difference
**	Samples not received at proper temperature of 6°C or below.
***	Insufficient time to reach temperature.
-	Chloride by SM4500Cl-B does not require samples be received at or below 6°C Samples reported on an as received basis (wet) unless otherwise noted on report

Cardinal Laboratories

*=Accredited Analyte

PLEASE NOTE: Liability and Damages. Cardinal's liability and client's exclusive remedy for any claim arising, whether based in contract or tort, shall be limited to the amount paid by client for analyses. All claims, including those for negligence and any other cause whatsoever shall be deemed waived unless made in writing and received by Cardinal within thirty (30) days after completion of the applicable service. In no event shall Cardinal be liable for incidental or consequential damages, including, without limitation, business interruptions, loss of use, or loss of profits incurred by client, its subsidiaries, affiliates or successors arising out of or related to the performance of the services hereunder by Cardinal, regardless of whether such claim is based upon any of the above stated reasons or otherwise. Results relate only to the samples identified above. This report shall not be reproduced except in full with written approval of Cardinal Laboratories.

A handwritten signature in black ink, appearing to read "Celey D. Keene".

Celey D. Keene, Lab Director/Quality Manager

From: [Tacoma Morrissey](#)
To: [Wells, Shelly, EMNRD](#)
Subject: [EXTERNAL] RE: NAPP2428834682 PLU 21 DTD CVB
Date: Thursday, January 2, 2025 12:13:27 PM
Attachments: [image001.png](#)
[image002.png](#)
[image003.png](#)
[Photolog - PLU 21 DTD CVB FS09A.pdf](#)
[H247476 ENSOLUM.pdf](#)

CAUTION: This email originated outside of our organization. Exercise caution prior to clicking on links or opening attachments.

Hi Shelly,

Hope you had a good New Years!

I apologize for the confusion and oversight on missing the lab report for this Site. Please see the attached which will hopefully clarify your questions and the work completed. I've included an updated photolog which shows the area of FS09 on December 6th and then again on Dec 10th. Our staff made an error on the comment he included in the photo, it should have been either, taken to 1' or taken down from 0.5'. As you can see in the photo, the scrape in the area on Dec 6 was not excavated more than 0.5', however, the excavation on Dec 10th certainly is. I've also attached the lab report, again, sincerest apologies for failing to include it. I've discussed with all our staff involved and we will do our best to ensure it does not happen again. I really appreciate you taking the time for a thorough review of our work and to ask these questions!

Thank you,



Tacoma Morrissey
Associate Principal
337-257-8307
Ensolum, LLC
in f X

From: Wells, Shelly, EMNRD <Shelly.Wells@emnrd.nm.gov>
Sent: Thursday, January 2, 2025 12:06 PM
To: Tacoma Morrissey <tmorrissey@ensolum.com>
Subject: RE: NAPP2428834682 PLU 21 DTD CVB

[**EXTERNAL EMAIL**]

Hi again Tacoma,

The lab report for FS09A and SW03, collected on December 10, 2024 is also missing from the

report. If you could, please email this to me when possible. In addition to another photo of the 1' excavation, I would like to see the area of FS09A scraped to 1', as Photograph 4 in the report shows FS09 down to ½'.

Thank you,

Shelly

From: Wells, Shelly, EMNRD
Sent: Thursday, January 2, 2025 10:45 AM
To: Tacoma Morrissey <tmorrissey@ensolum.com>
Subject: NAPP2428834682 PLU 21 DTD CVB

Hi Tacoma,

I am reviewing the remediation closure report for NAPP2428834682 PLU 21 DTD CVB and have a question...do you have more photos of the excavation? I would like to see the final 1' excavation area...Photo 3 shows it in progress. Again the more photos, the better.

Happy New Year,

Shelly

[Shelly Wells](#) * Environmental Specialist-Advanced
Environmental Bureau
EMNRD-Oil Conservation Division
1220 S. St. Francis Drive|Santa Fe, NM 87505
(505)469-7520|Shelly.Wells@emnrd.nm.gov
<http://www.emnrd.state.nm.us/OCD/>

Sante Fe Main Office
Phone: (505) 476-3441

General Information
Phone: (505) 629-6116

Online Phone Directory
<https://www.emnrd.nm.gov/ocd/contact-us>

State of New Mexico

Energy, Minerals and Natural Resources

Oil Conservation Division

1220 S. St Francis Dr.

Santa Fe, NM 87505

QUESTIONS

Action 413094

QUESTIONS

Operator: XTO ENERGY, INC 6401 Holiday Hill Road Midland, TX 79707	OGRID: 5380
	Action Number: 413094
	Action Type: [C-141] Remediation Closure Request C-141 (C-141-v-Closure)

QUESTIONS

Prerequisites	
Incident ID (n#)	nAPP2428834682
Incident Name	NAPP2428834682 PLU 21 DTD CVB @ 0
Incident Type	Produced Water Release
Incident Status	Remediation Closure Report Received

Location of Release Source	
Please answer all the questions in this group.	
Site Name	PLU 21 DTD CVB
Date Release Discovered	10/12/2024
Surface Owner	State

Incident Details	
Please answer all the questions in this group.	
Incident Type	Produced Water Release
Did this release result in a fire or is the result of a fire	No
Did this release result in any injuries	No
Has this release reached or does it have a reasonable probability of reaching a watercourse	No
Has this release endangered or does it have a reasonable probability of endangering public health	No
Has this release substantially damaged or will it substantially damage property or the environment	No
Is this release of a volume that is or may with reasonable probability be detrimental to fresh water	No

Nature and Volume of Release	
Material(s) released, please answer all that apply below. Any calculations or specific justifications for the volumes provided should be attached to the follow-up C-141 submission.	
Crude Oil Released (bbls) Details	Not answered.
Produced Water Released (bbls) Details	Cause: Human Error Tank (Any) Produced Water Released: 22 BBL Recovered: 21 BBL Lost: 1 BBL.
Is the concentration of chloride in the produced water >10,000 mg/l	Yes
Condensate Released (bbls) Details	Not answered.
Natural Gas Vented (Mcf) Details	Not answered.
Natural Gas Flared (Mcf) Details	Not answered.
Other Released Details	Not answered.
Are there additional details for the questions above (i.e. any answer containing Other, Specify, Unknown, and/or Fire, or any negative lost amounts)	Not answered.

Sante Fe Main Office
Phone: (505) 476-3441

General Information
Phone: (505) 629-6116

Online Phone Directory
<https://www.emnrd.nm.gov/ocd/contact-us>

State of New Mexico
Energy, Minerals and Natural Resources
Oil Conservation Division
1220 S. St Francis Dr.
Santa Fe, NM 87505

QUESTIONS, Page 2

Action 413094

QUESTIONS (continued)

Operator: XTO ENERGY, INC 6401 Holiday Hill Road Midland, TX 79707	OGRID: 5380
	Action Number: 413094
	Action Type: [C-141] Remediation Closure Request C-141 (C-141-v-Closure)

QUESTIONS

Nature and Volume of Release (continued)	
Is this a gas only submission (i.e. only significant Mcf values reported)	No, according to supplied volumes this does not appear to be a "gas only" report.
Was this a major release as defined by Subsection A of 19.15.29.7 NMAC	No
Reasons why this would be considered a submission for a notification of a major release	Unavailable.
With the implementation of the 19.15.27 NMAC (05/25/2021), venting and/or flaring of natural gas (i.e. gas only) are to be submitted on the C-129 form.	

Initial Response

The responsible party must undertake the following actions immediately unless they could create a safety hazard that would result in injury.

The source of the release has been stopped	True
The impacted area has been secured to protect human health and the environment	True
Released materials have been contained via the use of berms or dikes, absorbent pads, or other containment devices	True
All free liquids and recoverable materials have been removed and managed appropriately	True
If all the actions described above have not been undertaken, explain why	Not answered.

Per Paragraph (4) of Subsection B of 19.15.29.8 NMAC the responsible party may commence remediation immediately after discovery of a release. If remediation has begun, please prepare and attach a narrative of actions to date in the follow-up C-141 submission. If remedial efforts have been successfully completed or if the release occurred within a lined containment area (see Subparagraph (a) of Paragraph (5) of Subsection A of 19.15.29.11 NMAC), please prepare and attach all information needed for closure evaluation in the follow-up C-141 submission.

I hereby certify that the information given above is true and complete to the best of my knowledge and understand that pursuant to OCD rules and regulations all operators are required to report and/or file certain release notifications and perform corrective actions for releases which may endanger public health or the environment. The acceptance of a C-141 report by the OCD does not relieve the operator of liability should their operations have failed to adequately investigate and remediate contamination that pose a threat to groundwater, surface water, human health or the environment. In addition, OCD acceptance of a C-141 report does not relieve the operator of responsibility for compliance with any other federal, state, or local laws and/or regulations.

I hereby agree and sign off to the above statement	Name: Colton Brown Title: Environmental Advisor Email: colton.s.brown@exxonmobil.com Date: 12/17/2024
--	--

Sante Fe Main Office
Phone: (505) 476-3441

General Information
Phone: (505) 629-6116

Online Phone Directory
<https://www.emnrd.nm.gov/ocd/contact-us>

State of New Mexico
Energy, Minerals and Natural Resources
Oil Conservation Division
1220 S. St Francis Dr.
Santa Fe, NM 87505

QUESTIONS, Page 3

Action 413094

QUESTIONS (continued)

Operator: XTO ENERGY, INC 6401 Holiday Hill Road Midland, TX 79707	OGRID: 5380
	Action Number: 413094
	Action Type: [C-141] Remediation Closure Request C-141 (C-141-v-Closure)

QUESTIONS**Site Characterization**

Please answer all the questions in this group (only required when seeking remediation plan approval and beyond). This information must be provided to the appropriate district office no later than 90 days after the release discovery date.

What is the shallowest depth to groundwater beneath the area affected by the release in feet below ground surface (ft bgs)	Between 500 and 1000 (ft.)
What method was used to determine the depth to ground water	NM OSE iWaters Database Search
Did this release impact groundwater or surface water	No
What is the minimum distance, between the closest lateral extents of the release and the following surface areas:	
A continuously flowing watercourse or any other significant watercourse	Between ½ and 1 (mi.)
Any lakebed, sinkhole, or playa lake (measured from the ordinary high-water mark)	Greater than 5 (mi.)
An occupied permanent residence, school, hospital, institution, or church	Greater than 5 (mi.)
A spring or a private domestic fresh water well used by less than five households for domestic or stock watering purposes	Between ½ and 1 (mi.)
Any other fresh water well or spring	Between ½ and 1 (mi.)
Incorporated municipal boundaries or a defined municipal fresh water well field	Greater than 5 (mi.)
A wetland	Between 1 and 5 (mi.)
A subsurface mine	Greater than 5 (mi.)
An (non-karst) unstable area	Between 1 and 5 (mi.)
Categorize the risk of this well / site being in a karst geology	Low
A 100-year floodplain	Between ½ and 1 (mi.)
Did the release impact areas not on an exploration, development, production, or storage site	No

Remediation Plan

Please answer all the questions that apply or are indicated. This information must be provided to the appropriate district office no later than 90 days after the release discovery date.

Requesting a remediation plan approval with this submission	Yes
<i>Attach a comprehensive report demonstrating the lateral and vertical extents of soil contamination associated with the release have been determined, pursuant to 19.15.29.11 NMAC and 19.15.29.13 NMAC.</i>	
Have the lateral and vertical extents of contamination been fully delineated	Yes
Was this release entirely contained within a lined containment area	No

Soil Contamination Sampling: (Provide the highest observable value for each, in milligrams per kilograms.)

Chloride (EPA 300.0 or SM4500 Cl B)	1630
TPH (GRO+DRO+MRO) (EPA SW-846 Method 8015M)	103
GRO+DRO (EPA SW-846 Method 8015M)	103
BTEX (EPA SW-846 Method 8021B or 8260B)	0
Benzene (EPA SW-846 Method 8021B or 8260B)	0

Per Subsection B of 19.15.29.11 NMAC unless the site characterization report includes completed efforts at remediation, the report must include a proposed remediation plan in accordance with 19.15.29.12 NMAC, which includes the anticipated timelines for beginning and completing the remediation.

On what estimated date will the remediation commence	11/25/2024
On what date will (or did) the final sampling or liner inspection occur	12/10/2024
On what date will (or was) the remediation complete(d)	12/10/2024
What is the estimated surface area (in square feet) that will be reclaimed	1998
What is the estimated volume (in cubic yards) that will be reclaimed	55
What is the estimated surface area (in square feet) that will be remediated	1998
What is the estimated volume (in cubic yards) that will be remediated	55

These estimated dates and measurements are recognized to be the best guess or calculation at the time of submission and may (be) change(d) over time as more remediation efforts are completed.

The OCD recognizes that proposed remediation measures may have to be minimally adjusted in accordance with the physical realities encountered during remediation. If the responsible party has any need to significantly deviate from the remediation plan proposed, then it should consult with the division to determine if another remediation plan submission is required.

Sante Fe Main Office
Phone: (505) 476-3441

General Information
Phone: (505) 629-6116

Online Phone Directory
<https://www.emnrd.nm.gov/ocd/contact-us>

State of New Mexico
Energy, Minerals and Natural Resources
Oil Conservation Division
1220 S. St Francis Dr.
Santa Fe, NM 87505

QUESTIONS, Page 4

Action 413094

QUESTIONS (continued)

Operator: XTO ENERGY, INC 6401 Holiday Hill Road Midland, TX 79707	OGRID:	5380
	Action Number:	413094
	Action Type:	[C-141] Remediation Closure Request C-141 (C-141-v-Closure)

QUESTIONS

Remediation Plan (continued)	
<i>Please answer all the questions that apply or are indicated. This information must be provided to the appropriate district office no later than 90 days after the release discovery date.</i>	
This remediation will (or is expected to) utilize the following processes to remediate / reduce contaminants:	
<i>(Select all answers below that apply.)</i>	
(Ex Situ) Excavation and off-site disposal (i.e. dig and haul, hydrovac, etc.)	Yes
Which OCD approved facility will be used for off-site disposal	HALFWAY DISPOSAL AND LANDFILL [FEEM0112334510]
OR which OCD approved well (API) will be used for off-site disposal	Not answered.
OR is the off-site disposal site, to be used, out-of-state	Not answered.
OR is the off-site disposal site, to be used, an NMED facility	Not answered.
(Ex Situ) Excavation and on-site remediation (i.e. On-Site Land Farms)	Not answered.
(In Situ) Soil Vapor Extraction	Not answered.
(In Situ) Chemical processing (i.e. Soil Shredding, Potassium Permanganate, etc.)	Not answered.
(In Situ) Biological processing (i.e. Microbes / Fertilizer, etc.)	Not answered.
(In Situ) Physical processing (i.e. Soil Washing, Gypsum, Disking, etc.)	Not answered.
Ground Water Abatement pursuant to 19.15.30 NMAC	Not answered.
OTHER (Non-listed remedial process)	Not answered.
<i>Per Subsection B of 19.15.29.11 NMAC unless the site characterization report includes completed efforts at remediation, the report must include a proposed remediation plan in accordance with 19.15.29.12 NMAC, which includes the anticipated timelines for beginning and completing the remediation.</i>	
I hereby certify that the information given above is true and complete to the best of my knowledge and understand that pursuant to OCD rules and regulations all operators are required to report and/or file certain release notifications and perform corrective actions for releases which may endanger public health or the environment. The acceptance of a C-141 report by the OCD does not relieve the operator of liability should their operations have failed to adequately investigate and remediate contamination that pose a threat to groundwater, surface water, human health or the environment. In addition, OCD acceptance of a C-141 report does not relieve the operator of responsibility for compliance with any other federal, state, or local laws and/or regulations.	
I hereby agree and sign off to the above statement	Name: Colton Brown Title: Environmental Advisor Email: colton.s.brown@exxonmobil.com Date: 12/17/2024
<i>The OCD recognizes that proposed remediation measures may have to be minimally adjusted in accordance with the physical realities encountered during remediation. If the responsible party has any need to significantly deviate from the remediation plan proposed, then it should consult with the division to determine if another remediation plan submission is required.</i>	

Sante Fe Main Office
Phone: (505) 476-3441

General Information
Phone: (505) 629-6116

Online Phone Directory
<https://www.emnrd.nm.gov/ocd/contact-us>

State of New Mexico
Energy, Minerals and Natural Resources
Oil Conservation Division
1220 S. St Francis Dr.
Santa Fe, NM 87505

QUESTIONS, Page 5

Action 413094

QUESTIONS (continued)

Operator: XTO ENERGY, INC 6401 Holiday Hill Road Midland, TX 79707	OGRID: 5380
	Action Number: 413094
	Action Type: [C-141] Remediation Closure Request C-141 (C-141-v-Closure)

QUESTIONS

Deferral Requests Only	
Only answer the questions in this group if seeking a deferral upon approval this submission. Each of the following items must be confirmed as part of any request for deferral of remediation.	
Requesting a deferral of the remediation closure due date with the approval of this submission	No

Sante Fe Main Office
Phone: (505) 476-3441

General Information
Phone: (505) 629-6116

Online Phone Directory
<https://www.emnrd.nm.gov/ocd/contact-us>

State of New Mexico
Energy, Minerals and Natural Resources
Oil Conservation Division
1220 S. St Francis Dr.
Santa Fe, NM 87505

QUESTIONS, Page 6

Action 413094

QUESTIONS (continued)

Operator: XTO ENERGY, INC 6401 Holiday Hill Road Midland, TX 79707	OGRID: 5380
	Action Number: 413094
	Action Type: [C-141] Remediation Closure Request C-141 (C-141-v-Closure)

QUESTIONS

Sampling Event Information	
Last sampling notification (C-141N) recorded	407085
Sampling date pursuant to Subparagraph (a) of Paragraph (1) of Subsection D of 19.15.29.12 NMAC	12/06/2024
What was the (estimated) number of samples that were to be gathered	10
What was the sampling surface area in square feet	600

Remediation Closure Request

Only answer the questions in this group if seeking remediation closure for this release because all remediation steps have been completed.

Requesting a remediation closure approval with this submission	Yes
Have the lateral and vertical extents of contamination been fully delineated	Yes
Was this release entirely contained within a lined containment area	No
All areas reasonably needed for production or subsequent drilling operations have been stabilized, returned to the sites existing grade, and have a soil cover that prevents ponding of water, minimizing dust and erosion	Yes
What was the total surface area (in square feet) remediated	1998
What was the total volume (cubic yards) remediated	55
All areas not reasonably needed for production or subsequent drilling operations have been reclaimed to contain a minimum of four feet of non-waste contain earthen material with concentrations less than 600 mg/kg chlorides, 100 mg/kg TPH, 50 mg/kg BTEX, and 10 mg/kg Benzene	Yes
What was the total surface area (in square feet) reclaimed	1998
What was the total volume (in cubic yards) reclaimed	55
Summarize any additional remediation activities not included by answers (above)	Site assessment and excavation activities were conducted at the Site to address the October 12, 2024, release of produced water. Laboratory analytical results for the confirmation soil samples, collected from the final excavation extent, indicated that all COC concentrations were compliant with the Site Closure Criteria. Based on the soil sample analytical results, no further remediation was required. XTO will backfill the excavation with material purchased locally and recontour the Site to match pre-existing site conditions.
<i>The responsible party must attach information demonstrating they have complied with all applicable closure requirements and any conditions or directives of the OCD. This demonstration should be in the form of a comprehensive report (in .pdf format) including a scaled site map, sampling diagrams, relevant field notes, photographs of any excavation prior to backfilling, laboratory data including chain of custody documents of final sampling, and a narrative of the remedial activities. Refer to 19.15.29.12 NMAC.</i>	
I hereby certify that the information given above is true and complete to the best of my knowledge and understand that pursuant to OCD rules and regulations all operators are required to report and/or file certain release notifications and perform corrective actions for releases which may endanger public health or the environment. The acceptance of a C-141 report by the OCD does not relieve the operator of liability should their operations have failed to adequately investigate and remediate contamination that pose a threat to groundwater, surface water, human health or the environment. In addition, OCD acceptance of a C-141 report does not relieve the operator of responsibility for compliance with any other federal, state, or local laws and/or regulations. The responsible party acknowledges they must substantially restore, reclaim, and re-vegetate the impacted surface area to the conditions that existed prior to the release or their final land use in accordance with 19.15.29.13 NMAC including notification to the OCD when reclamation and re-vegetation are complete.	
I hereby agree and sign off to the above statement	Name: Colton Brown Title: Environmental Advisor Email: colton.s.brown@exxonmobil.com Date: 12/17/2024

Sante Fe Main Office
Phone: (505) 476-3441

General Information
Phone: (505) 629-6116

Online Phone Directory
<https://www.emnrd.nm.gov/ocd/contact-us>

State of New Mexico
Energy, Minerals and Natural Resources
Oil Conservation Division
1220 S. St Francis Dr.
Santa Fe, NM 87505

QUESTIONS, Page 7

Action 413094

QUESTIONS (continued)

Operator: XTO ENERGY, INC 6401 Holiday Hill Road Midland, TX 79707	OGRID: 5380
	Action Number: 413094
	Action Type: [C-141] Remediation Closure Request C-141 (C-141-v-Closure)

QUESTIONS

Reclamation Report	
Only answer the questions in this group if all reclamation steps have been completed.	
Requesting a reclamation approval with this submission	No

Sante Fe Main Office
Phone: (505) 476-3441

General Information
Phone: (505) 629-6116

Online Phone Directory
<https://www.emnrd.nm.gov/oed/contact-us>

State of New Mexico
Energy, Minerals and Natural Resources
Oil Conservation Division
1220 S. St Francis Dr.
Santa Fe, NM 87505

CONDITIONS

Action 413094

CONDITIONS

Operator: XTO ENERGY, INC 6401 Holiday Hill Road Midland, TX 79707	OGRID: 5380
	Action Number: 413094
	Action Type: [C-141] Remediation Closure Request C-141 (C-141-v-Closure)

CONDITIONS

Created By	Condition	Condition Date
scwells	None	1/2/2025