



LINER INSPECTION AND CLOSURE REPORT

PREPARED FOR:
DEVON ENERGY PRODUCTION, LP.

PREPARED BY:
PIMA ENVIRONMENTAL SERVICES, LLC.

FEBRUARY 28TH, 2025
PIMA ENVIRONMENTAL SERVICES, LLC.
5614 N LOVINGTON HWY, HOBBS, NM 88240



NMOCD District 2
811 S. First St
Artesia, NM 88210

Francis Mineral PTSHP, LLC.
2929 Carlisle St
Ste 150
Dallas, TX 75204

RE: LINER INSPECTION AND CLOSURE REPORT

LOCATION: Mimosa 24 Fed Battery

WELL API:

GPS: 32.651741, -103.830582

INCIDENT LOCATION: D-24-19S-31E

COUNTY: Lea

NMOCD REF. NO. NAPP2035646158

Devon Energy Production Company (Devon) has contracted Pima Environmental Services, LLC (Pima) to perform a liner inspection and prepare this closure report for a crude oil release that happened at the Mimosa 24 Fed 1H (Mimosa). An initial C-141 was submitted on December 18, 2020. This incident was assigned Incident ID NAPP2035646158, by the New Mexico Oil Conservation Division (NMOCD).

RELEASE INFORMATION

NAPP2035646158: On December 6, 2020, a circulating pump packing developed a leak causing fluid released into lined containment. Approximately 13 barrels (bbls) of crude oil was released. A vacuum truck was dispatched and recovered 5 bbls of fluid from the lined SPCC containment ring. Once fluids were removed, the liner was visually inspected by Devon field staff for any pinholes or punctures, and none were found. Based on this inspection there is no evidence that the spilled fluids left containment.

A Site Map can be found in Figure 4.

SITE INFORMATION AND SITE CHARACTERIZATION

The Mimosa is located approximately fourteen (14) miles South of Loco Hills, NM. This spill site is in Unit D, Section 24, Township 19S, Range 31E, Latitude 32.651741 Longitude -103.830582, Eddy County, NM. A Location Map can be found in Figure 1.

Based upon New Mexico Office of the State Engineer well water data, depth to the nearest groundwater in this area is 250 feet below grade surface (BGS). According to the United States Geological Survey well water data, depth to the nearest groundwater in this area is greater than 145 feet BGS. See Appendix A for referenced water surveys. The Mimosa is in a low karst area (Figure 3). A Topographic Map can be found in Figure 2.



Pima Environmental Services, LLC
5614 N Lovington Hwy, Hobbs, NM 88240
575-964-7740 | www.pimaoil.com

Mimosa 24 Fed Battery | NAPP2035646158

Page 1 | 3

SITE ASSESSMENT, AND LINER INSPECTION

On June 23, 2022, after sending the 48-hour notification via email (Appendix C), Pima Environmental conducted a liner inspection at this location. We concluded that this liner and containment maintained its integrity and was able to retain the fluids. The liner inspection form can be found in Appendix C and photographic documentation can be found in Appendix D. A Closure Report was submitted on June 27, 2022, and was subsequently denied.

COUNTERMEASURES TO REJECTED REPORT

On November 18, 2022, NMOCD denied the submitted Liner Inspection Closure Report (Application ID: 435273)

- Closure Report is denied. The liner is covered with oil and not viewable in certain areas. Approximately 13 barrels of crude oil was released and only 5 barrels of fluid was recovered. Please make sure the liner is clean and the surface is visible. Reinspect the liner after this is completed. The missing 8 barrels of oil needs to be accounted for. Verify the liner is intact and please explain to the OCD what happened to the missing oil.

In response to the rejected report, Pima personnel returned to the Mimosa to find that the liner has since been sufficiently cleaned. There is no evidence of any remaining oil, and the surface of the liner is visible in all areas. New photographic documentation can be found in Appendix D. Based on the previously submitted photographic documentation in Pima's June 27, 2022, report (Appendix D), it is assumed that the recorded amount showing 5 bbls of fluid being recovered had been miscalculated, there was no evidence that 8 bbls of standing fluid remained.

SITE ASSESSMENT, AND LINER INSPECTION

On February 27, 2025, after sending the 48-hour notification (Appendix C), Pima Environmental conducted a secondary liner inspection at this location. We concluded that this liner is intact and remains free of any holes or tears that could potentially compromise the integrity of the liner or cause any negative environmental impact. The liner inspection form can be found in Appendix C and photographic documentation can be found in Appendix D.

CLOSURE REQUEST

After careful review, Pima requests that this incident, NAPP2035646158, be closed. Devon has complied with the applicable closure requirements outlined in rule 19.15.19.12 NMAC.

Should you have any questions or need additional information, please feel free to contact:

Devon Energy Production – Jim Raley at 575-689-7597 or jim.ralej@dv.com.

Pima Environmental – DelRae Geller at 806-724-5391 or delrae@pimaoil.com.

Respectfully,

DelRae Geller

DelRae Geller

Project Manager

Pima Environmental Services, LLC.



Pima Environmental Services, LLC
5614 N Lovington Hwy, Hobbs, NM 88240
575-964-7740 | www.pimaoil.com

Mimosa 24 Fed Battery | NAPP2035646158

Page 2 | 3

ATTACHMENTS

FIGURES:

- 1- Location Map
- 2- Topographic Map
- 3- Karst Map
- 4- Site Map

APPENDICES:

- Appendix A – Water Surveys and Water Related Maps
- Appendix B – Geological Data
- Appendix C – 48 Hour Notifications & Liner Inspection Forms
- Appendix D– Photographic Documentation



FIGURES

- 1- Location Map
- 2- Topographic Map
- 3- Karst Map
- 4- Site Map



Pima Environmental Services, LLC
5614 N Lovington Hwy, Hobbs, NM 88240
575-964-7740 | www.pimaoil.com


Mimosa 24 Fed Battery | NAPP2035646158

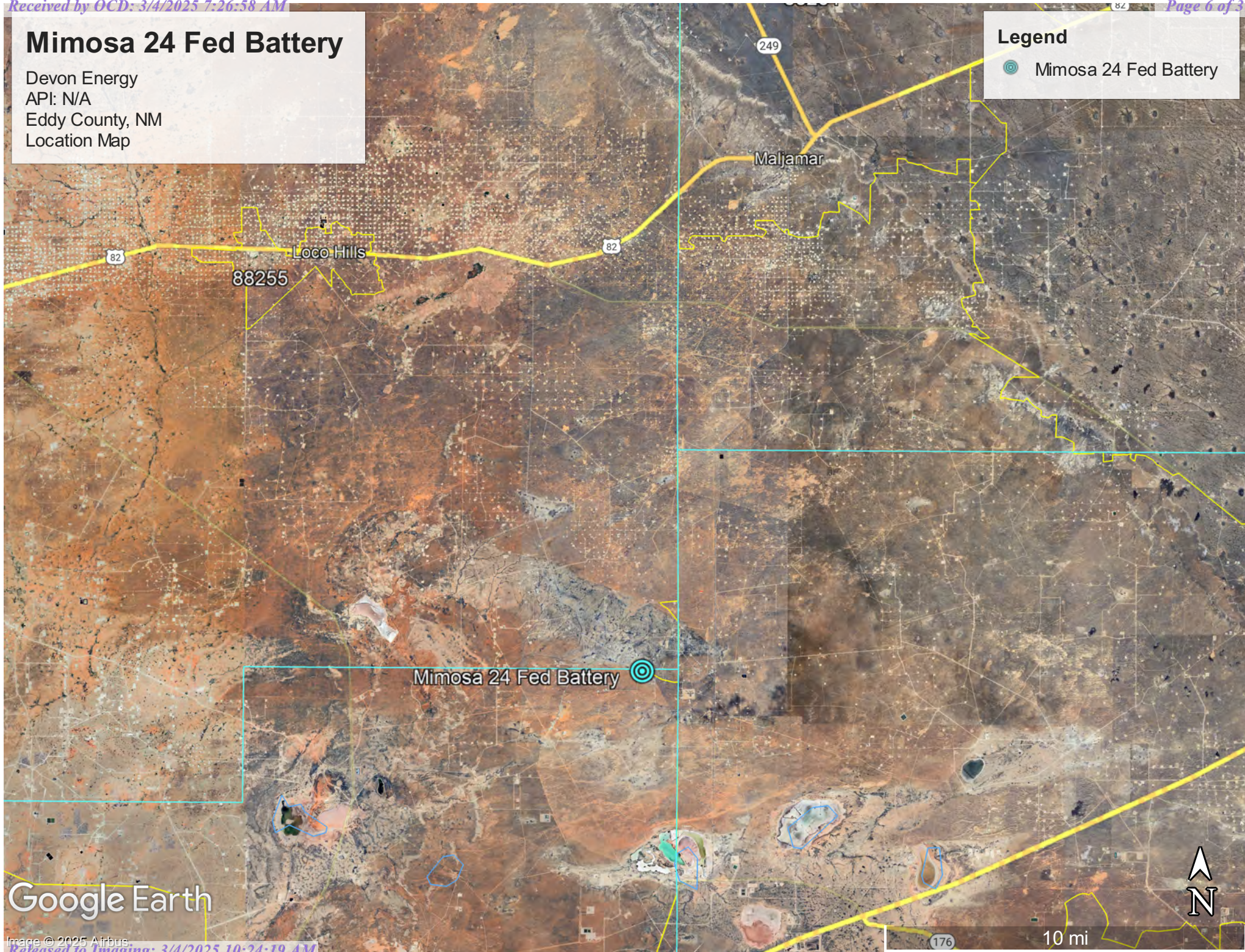
DEVON ENERGY PRODUCTION, LP.

Mimosa 24 Fed Battery

Devon Energy
API: N/A
Eddy County, NM
Location Map

Legend

 Mimosa 24 Fed Battery



88255

Loco Hills

Maljamar

Mimosa 24 Fed Battery

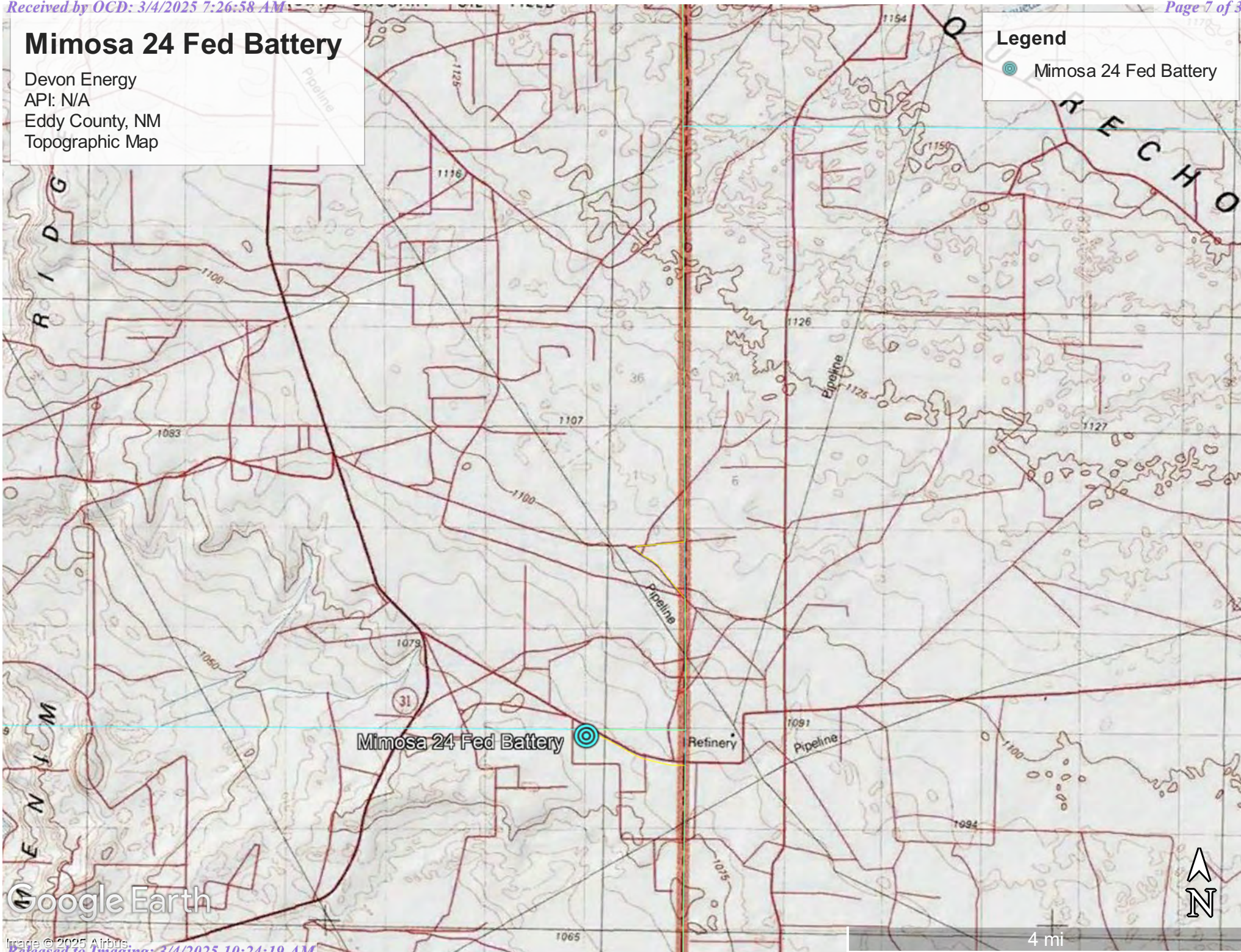
Google Earth

Mimosa 24 Fed Battery

Devon Energy
API: N/A
Eddy County, NM
Topographic Map

Legend

 Mimosa 24 Fed Battery




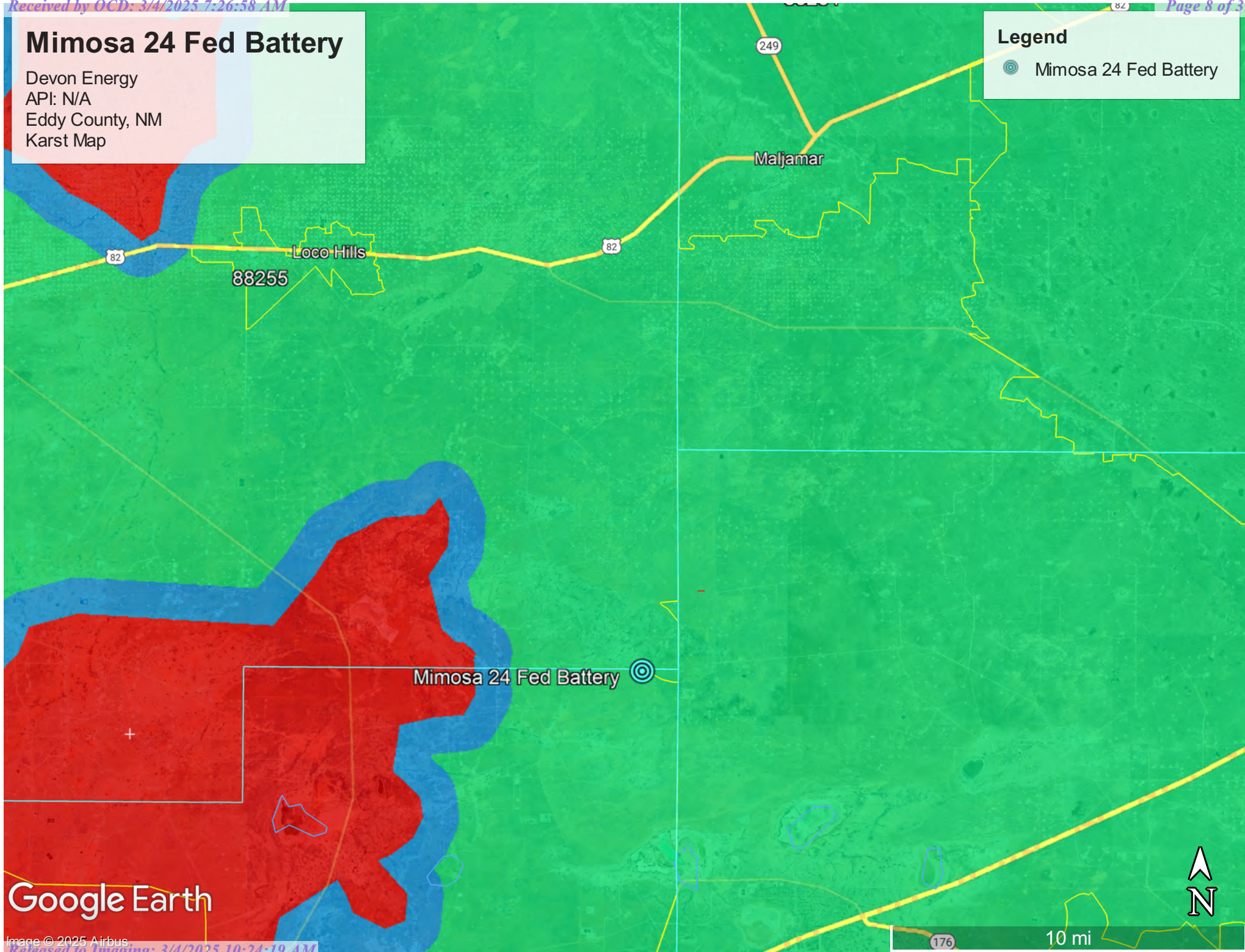
Google Earth

Mimosa 24 Fed Battery

Devon Energy
API: N/A
Eddy County, NM
Karst Map

Legend

 Mimosa 24 Fed Battery





Google Earth

Image © 2025 Airbus

Mimosa 24 Fed Battery

Devon Energy
API: N/A
Eddy County, NM
Site Map

Legend

-  Lined Containment- 5,677 sq ft
-  Mimosa 24 Fed Battery



Google Earth

Image © 2025 Airbus

Released to Imaging: 3/4/2025 10:24:19 AM

APPENDIX A

OSE Water Survey
USGS Water Survey
Water Related Maps



Pima Environmental Services, LLC
5614 N Lovington Hwy, Hobbs, NM 88240
575-964-7740 | www.pimaoil.com

Mimosa 24 Fed Battery | NAPP2035646158

DEVON ENERGY PRODUCTION, LP.



New Mexico Office of the State Engineer

Water Column/Average Depth to Water

(A CLW##### in the POD suffix indicates the POD has been replaced & no longer serves a water right file.)

(R=POD has been replaced, O=orphaned, C=the file is closed)

(quarters are 1=NW 2=NE 3=SW 4=SE)

(quarters are smallest to largest)

(NAD83 UTM in meters)

(In feet)

POD Number	Code	POD Sub-basin	County	Q 64	Q 16	Q 4	Sec	Tws	Rng	X	Y	Distance	DepthWell	DepthWater	Water Column
CP 00642 POD1		CP	ED	2	2	25	19S	31E		611025	3611657*	2126	250		
CP 00563 POD1		CP	LE	1	1	2	19S	32E		612118	3613376*	2441	300		
CP 01554 POD2		CP	LE	2	2	1	22	19S	31E	607165	3613322	2512	400		
CP 01554 POD1		CP	LE	2	2	1	22	19S	31E	607166	3613354	2512	400		
CP 00640 POD1		CP	LE	2	2	19	19S	32E		612621	3613280*	2943	260	102	158
CP 00639 POD1		CP	LE	3	1	20	19S	32E		613029	3612880*	3377	350	345	5
CP 00829 POD1		CP	LE	2	4	16	19S	31E		606165	3614009*	3583	120		
CP 01656 POD2		CP	LE	3	4	3	17	19S	32E	613364	3613648	3701	70		
CP 01656 POD1		CP	LE	3	4	3	17	19S	32E	613368	3613646	3706	70		
CP 01656 POD3		CP	LE	3	4	3	17	19S	32E	613374	3613633	3710	30		
CP 00641 POD1		CP	ED	4	1	36	19S	31E		610247	3609634*	3711	300	130	170

Average Depth to Water: **192 feet**

Minimum Depth: **102 feet**

Maximum Depth: **345 feet**

Record Count: 11

UTMNAD83 Radius Search (in meters):

Easting (X): 609677.87

Northing (Y): 3613302

Radius: 4000

*UTM location was derived from PLSS - see Help

The data is furnished by the NMOSE/ISC and is accepted by the recipient with the expressed understanding that the OSE/ISC make no warranties, expressed or implied, concerning the accuracy, completeness, reliability, usability, or suitability for any particular purpose of the data.




6/20/22 2:32 PM

WATER COLUMN/ AVERAGE DEPTH TO WATER

Mimosa 24 Fed Battery

Devon Energy
API: N/A
Lea County, NM
OSE Pod Map

Legend

-  1.34 Miles
-  CP-00642-POD1
-  Mimosa 24 Fed Battery

Mimosa 24 Fed Battery

CP-00642-POD1

Google Earth



1 mi



[USGS Home](#)
[Contact USGS](#)
[Search USGS](#)

National Water Information System: Web Interface

USGS Water Resources

Data Category:

Groundwater



Geographic Area:

United States



GO

Click to hide News Bulletins

- Explore the *NEW* [USGS National Water Dashboard](#) interactive map to access real-time water data from over 13,500 stations nationwide.
- [Full News](#) 

Groundwater levels for the Nation



Important: [Next Generation Monitoring Location Page](#)

Search Results -- 1 sites found

site_no list =

- 323803103510001

Minimum number of levels = 1

[Save file of selected sites](#) to local disk for future upload

USGS 323803103510001 19S.31E.27.21000

Available data for this site

Groundwater: Field measurements



GO

Eddy County, New Mexico

Hydrologic Unit Code 13060011

Latitude 32°38'03", Longitude 103°51'00" NAD27

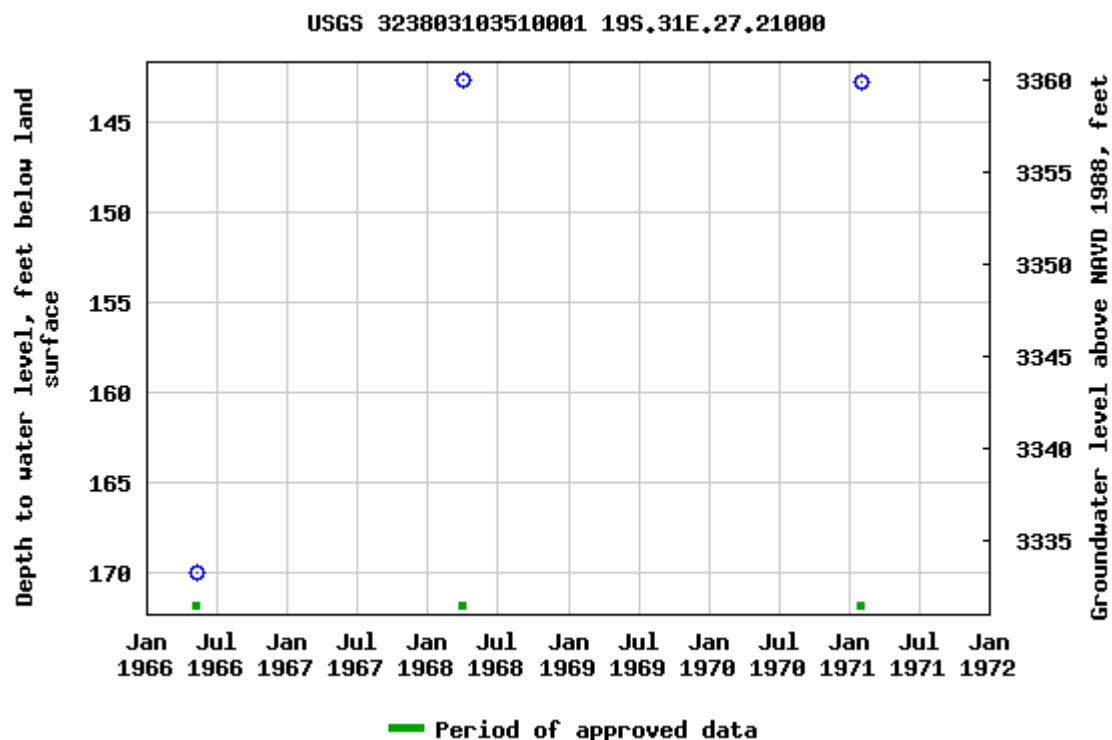
Land-surface elevation 3,503 feet above NAVD88

This well is completed in the Other aquifers (N9999OTHER) national aquifer.

This well is completed in the Rustler Formation (312RSLR) local aquifer.

Output formats

Table of data
Tab-separated data
Graph of data
Reselect period



Breaks in the plot represent a gap of at least one year between field measurements.

[Download a presentation-quality graph](#)

[Questions about sites/data?](#)

[Feedback on this web site](#)

[Automated retrievals](#)

[Help](#)

[Data Tips](#)

[Explanation of terms](#)

[Subscribe for system changes](#)

[News](#)

[Accessibility](#)

[FOIA](#)

[Privacy](#)

[Policies and Notices](#)

[U.S. Department of the Interior](#) | [U.S. Geological Survey](#)

Title: Groundwater for USA: Water Levels

URL: <https://nwis.waterdata.usgs.gov/nwis/gwlevels?>

Page Contact Information: [USGS Water Data Support Team](#)

Page Last Modified: 2022-06-20 16:30:10 EDT




0.73 0.5 nadww01



Mimosa 24 Fed Battery

Devon Energy
API: N/A
Lea County, NM
USGS Map

Legend

-  1.63 Miles
-  Mimosa 24 Fed Battery
-  USGS323803103510001

Mimosa 24 Fed Battery

USGS323803103510001

Google Earth


1 mi




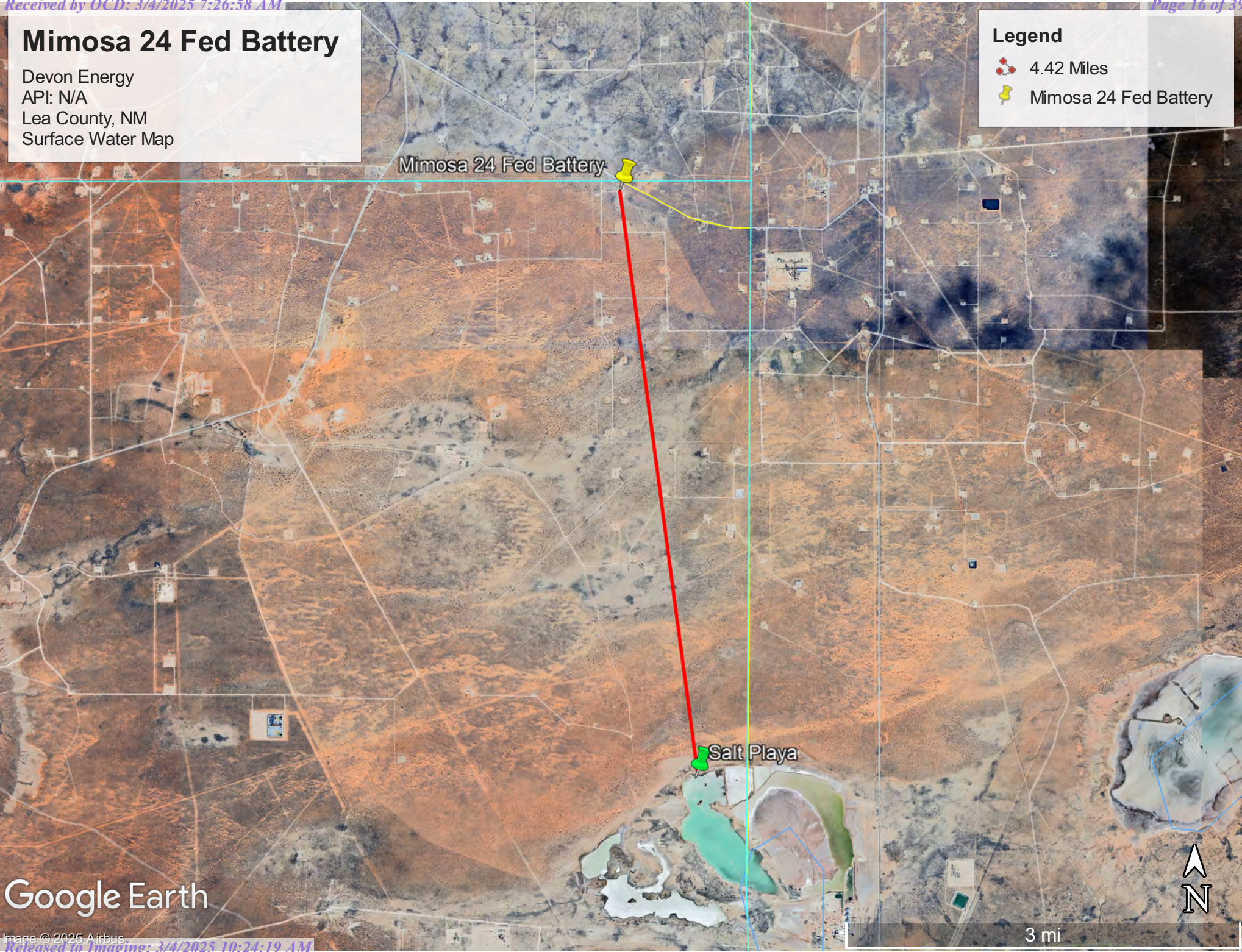
Mimosa 24 Fed Battery

Devon Energy
API: N/A
Lea County, NM
Surface Water Map

Legend

 4.42 Miles

 Mimosa 24 Fed Battery



Google Earth

National Flood Hazard Layer FIRMette



103°50'9"W 32°39'22"N



1:6,000

103°49'31"W 32°38'52"N

Legend

SEE FIS REPORT FOR DETAILED LEGEND AND INDEX MAP FOR FIRM PANEL LAYOUT

SPECIAL FLOOD HAZARD AREAS		Without Base Flood Elevation (BFE) Zone A, V, A99
		With BFE or Depth Zone AE, AO, AH, VE, AR
		Regulatory Floodway
OTHER AREAS OF FLOOD HAZARD		0.2% Annual Chance Flood Hazard, Areas of 1% annual chance flood with average depth less than one foot or with drainage areas of less than one square mile Zone X
		Future Conditions 1% Annual Chance Flood Hazard Zone X
		Area with Reduced Flood Risk due to Levee. See Notes. Zone X
		Area with Flood Risk due to Levee Zone D
OTHER AREAS		NO SCREEN Area of Minimal Flood Hazard Zone X
		Effective LOMRs
		Area of Undetermined Flood Hazard Zone D
GENERAL STRUCTURES		Channel, Culvert, or Storm Sewer
		Levee, Dike, or Floodwall
OTHER FEATURES		20.2 Cross Sections with 1% Annual Chance Water Surface Elevation
		17.5
		Coastal Transect
		Base Flood Elevation Line (BFE)
		Limit of Study
		Jurisdiction Boundary
		Coastal Transect Baseline
MAP PANELS		Digital Data Available
		No Digital Data Available
		Unmapped



The pin displayed on the map is an approximate point selected by the user and does not represent an authoritative property location.

This map complies with FEMA's standards for the use of digital flood maps if it is not void as described below. The basemap shown complies with FEMA's basemap accuracy standards

The flood hazard information is derived directly from the authoritative NFHL web services provided by FEMA. This map was exported on 2/26/2025 at 3:07 PM and does not reflect changes or amendments subsequent to this date and time. The NFHL and effective information may change or become superseded by new data over time.

This map image is void if the one or more of the following map elements do not appear: basemap imagery, flood zone labels, legend, scale bar, map creation date, community identifiers, FIRM panel number, and FIRM effective date. Map images for unmapped and unmodernized areas cannot be used for regulatory purposes.

Wetlands



February 26, 2025

Wetlands

- | | | | | | |
|-------------------------------------------------------------------------------------|--------------------------------|-------------------------------------------------------------------------------------|-----------------------------------|---------------------------------------------------------------------------------------|----------|
|  | Estuarine and Marine Deepwater |  | Freshwater Emergent Wetland |  | Lake |
|  | Estuarine and Marine Wetland |  | Freshwater Forested/Shrub Wetland |  | Other |
| | |  | Freshwater Pond |  | Riverine |

This map is for general reference only. The US Fish and Wildlife Service is not responsible for the accuracy or currentness of the base data shown on this map. All wetlands related data should be used in accordance with the layer metadata found on the Wetlands Mapper web site.

APPENDIX B

Soil Survey & Geological Data

Geologic Unit Map



Pima Environmental Services, LLC
5614 N Lovington Hwy, Hobbs, NM 88240
575-964-7740 | www.pimaoil.com

Mimosa 24 Fed Battery | NAPP2035646158

DEVON ENERGY PRODUCTION, LP.

Map Unit Description: Wink loamy fine sand, 0 to 3 percent slopes, eroded---Eddy Area, New Mexico

Eddy Area, New Mexico

WK—Wink loamy fine sand, 0 to 3 percent slopes, eroded

Map Unit Setting

National map unit symbol: 1w6c

Elevation: 2,700 to 5,000 feet

Mean annual precipitation: 5 to 14 inches

Mean annual air temperature: 57 to 70 degrees F

Frost-free period: 180 to 250 days

Farmland classification: Not prime farmland

Map Unit Composition

Wink and similar soils: 98 percent

Minor components: 2 percent

Estimates are based on observations, descriptions, and transects of the mapunit.

Description of Wink

Setting

Landform: Swales, depressions

Landform position (three-dimensional): Talf

Down-slope shape: Convex

Across-slope shape: Convex

Parent material: Mixed alluvium and/or eolian sands

Typical profile

H1 - 0 to 8 inches: loamy fine sand

H2 - 8 to 38 inches: fine sandy loam

H3 - 38 to 60 inches: fine sandy loam

Properties and qualities

Slope: 0 to 3 percent

Depth to restrictive feature: More than 80 inches

Drainage class: Well drained

Runoff class: Very low

Capacity of the most limiting layer to transmit water (Ksat): High
(2.00 to 6.00 in/hr)

Depth to water table: More than 80 inches

Frequency of flooding: None

Frequency of ponding: None

Calcium carbonate, maximum content: 30 percent

Maximum salinity: Nonsaline to very slightly saline (0.0 to 2.0
mmhos/cm)

Sodium adsorption ratio, maximum: 1.0

Available water supply, 0 to 60 inches: Low (about 5.7 inches)

Interpretive groups

Land capability classification (irrigated): None specified

Land capability classification (nonirrigated): 7e

Hydrologic Soil Group: A

Map Unit Description: Wink loamy fine sand, 0 to 3 percent slopes, eroded---Eddy Area, New Mexico

Ecological site: R070BD003NM - Loamy Sand
Hydric soil rating: No

Minor Components

Wink

Percent of map unit: 1 percent
Ecological site: R070BD004NM - Sandy
Hydric soil rating: No

Simona

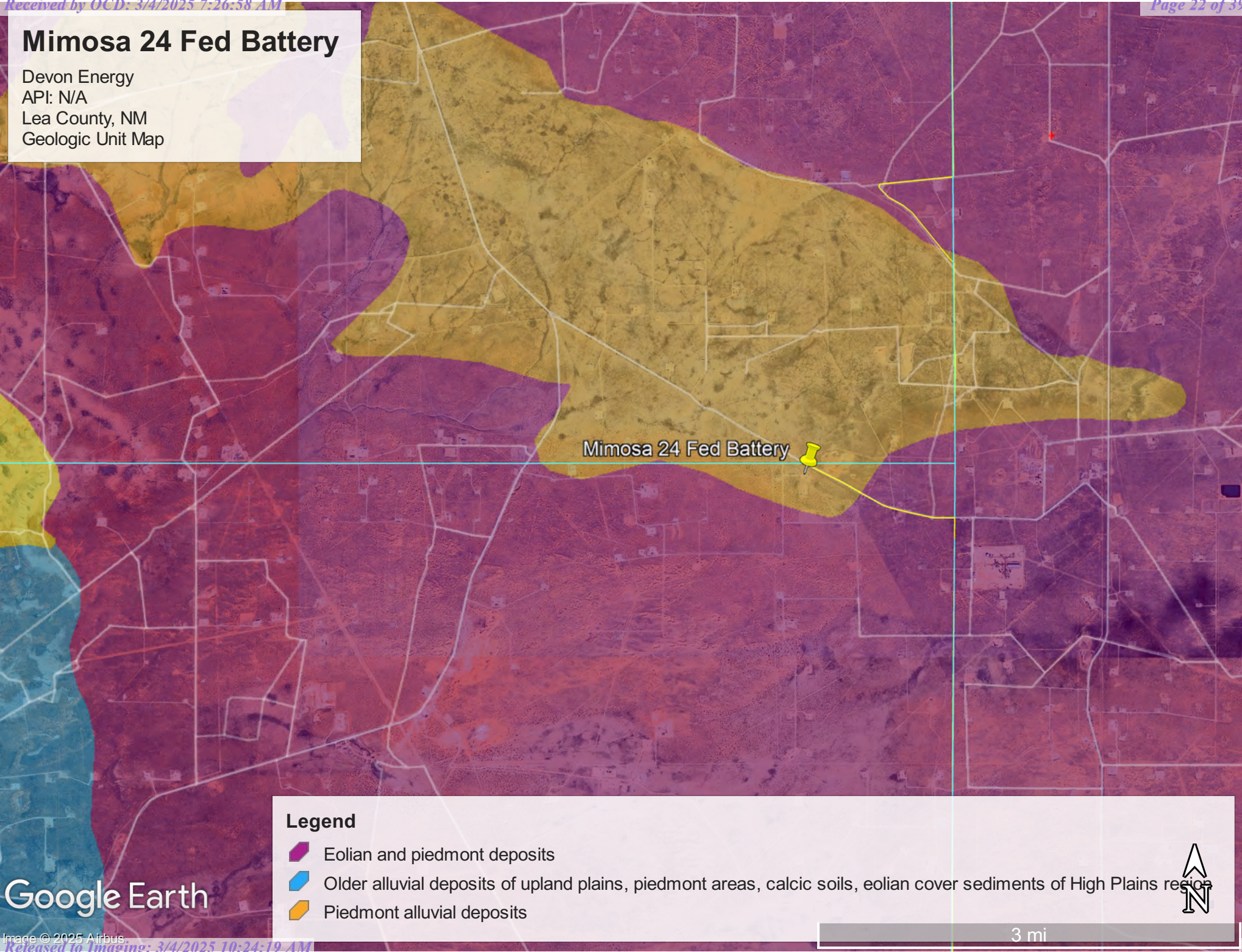
Percent of map unit: 1 percent
Ecological site: R070BD002NM - Shallow Sandy
Hydric soil rating: No

Data Source Information

Soil Survey Area: Eddy Area, New Mexico
Survey Area Data: Version 20, Sep 3, 2024

Mimosa 24 Fed Battery

Devon Energy
API: N/A
Lea County, NM
Geologic Unit Map



APPENDIX C

48-Hour Notifications

Liner Inspection Forms



Pima Environmental Services, LLC
5614 N Lovington Hwy, Hobbs, NM 88240
575-964-7740 | www.pimaoil.com

Mimosa 24 Fed Battery| NAPP2035646158

DEVON ENERGY PRODUCTION, LP.



Gio PimaOil <gio@pimaoil.com>

Mimosa 24 Fed Battery - Liner Inspection

1 message

Gio PimaOil <gio@pimaoil.com>

Mon, Jun 20, 2022 at 2:13 PM

To: ocdonline@state.nm.us, Tom Pima Oil <tom@pimaoil.com>

Good Afternoon,

Pima Environmental would like to notify you that we will be conducting a liner Inspection at the Mimosa 24 Fed Battery for incidents NAPP2035656158 & NAPP2200659729. Pima personnel are scheduled to be on site for this Inspection event at approximately 7:00 a.m. On Wednesday, June 23, 2022. If you have any questions or concerns, please let me know. Thank you.

Gio Gomez
Environmental Project Manager
cell-806-782-1151
Office- 575-964-7740
Pima Environmental Services, LLC.

Sante Fe Main Office
Phone: (505) 476-3441

General Information
Phone: (505) 629-6116

Online Phone Directory
<https://www.emnrd.nm.gov/ocd/contact-us>

State of New Mexico
Energy, Minerals and Natural Resources
Oil Conservation Division
1220 S. St Francis Dr.
Santa Fe, NM 87505

QUESTIONS

Action 435273

QUESTIONS

Operator: DEVON ENERGY PRODUCTION COMPANY, LP 333 West Sheridan Ave. Oklahoma City, OK 73102	OGRID: 6137
	Action Number: 435273
	Action Type: [NOTIFY] Notification Of Liner Inspection (C-141L)

QUESTIONS

Prerequisites	
Incident ID (n#)	nAPP2035646158
Incident Name	NAPP2035646158 MIMOSA 24 FED BATTERY @ 0
Incident Type	Oil Release
Incident Status	Remediation Closure Report Received

Location of Release Source	
Site Name	MIMOSA 24 FED BATTERY
Date Release Discovered	12/06/2020
Surface Owner	Federal

Liner Inspection Event Information	
Please answer all the questions in this group.	
What is the liner inspection surface area in square feet	5,677
Have all the impacted materials been removed from the liner	Yes
Liner inspection date pursuant to Subparagraph (a) of Paragraph (5) of Subsection A of 19.15.29.11 NMAC	02/27/2025
Time liner inspection will commence	01:00 PM
Please provide any information necessary for observers to liner inspection	Andrew Franco (806) 200-0054
Please provide any information necessary for navigation to liner inspection site	32.651741, -103.830582

Sante Fe Main Office
Phone: (505) 476-3441

General Information
Phone: (505) 629-6116

Online Phone Directory
<https://www.emnrd.nm.gov/ocd/contact-us>

State of New Mexico
Energy, Minerals and Natural Resources
Oil Conservation Division
1220 S. St Francis Dr.
Santa Fe, NM 87505

CONDITIONS

Action 435273

CONDITIONS

Operator: DEVON ENERGY PRODUCTION COMPANY, LP 333 West Sheridan Ave. Oklahoma City, OK 73102	OGRID: 6137
	Action Number: 435273
	Action Type: [NOTIFY] Notification Of Liner Inspection (C-141L)

CONDITIONS

Created By	Condition	Condition Date
jralej	Failure to notify the OCD of liner inspections including any changes in date/time per the requirements of 19.15.29.11.A(5)(a)(ii) NMAC, may result in the inspection not being accepted.	2/25/2025



Pima Environmental Services, LLC

Liner Inspection FormCompany Name: Devon EnergySite: Mimosa 24 Fed BatteryLat/Long: 32.651741, -103.830582NMOCD Incident ID
& Incident Date: NAPP2035646158 12/6/20202-Day Notification
Sent: via Email by Gio Gomez 6/20/2022Inspection Date: 6/23/2022

Liner Type: Earthen w/liner Earthen no liner Polystar

 Steel w/poly liner Steel w/spray epoxy No Liner

Other: _____

Visualization	Yes	No	Comments
Is there a tear in the liner?		X	
Are there holes in the liner?		X	
Is the liner retaining any fluids?	X		Contained water from power washing tanks
Does the liner have integrity to contain a leak?	X		

Comments: _____

Inspector Name: Ned Rogers Inspector Signature: Ned Rogers



Pima Environmental Services, LLC

Liner Inspection FormCompany Name: Devon EnergySite: Mimosa 24 Fed BatteryLat/Long: 32.651741, -103.830582

NMOCD Incident ID

& Incident Date: NAPP2035646158 12/6/2020

2-Day Notification

Sent: via Email by Jim Raley on OCD portal 2/25/2025
Application ID: 435273Inspection Date: 2/27/2025

Liner Type: Earthen w/liner Earthen no liner Polystar

 Steel w/poly liner Steel w/spray epoxy No Liner

Other: _____

Visualization	Yes	No	Comments
Is there a tear in the liner?		X	
Are there holes in the liner?		X	
Is the liner retaining any fluids?		X	
Does the liner have integrity to contain a leak?	X		

Comments: _____

Inspector Name: Andrew Franco Inspector Signature: Andrew Franco

APPENDIX D

Photographic Documentation



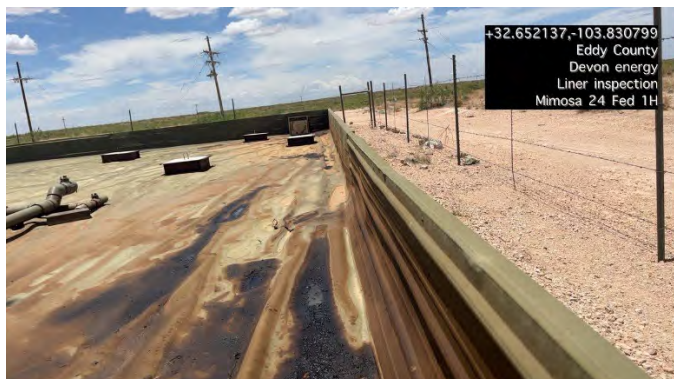
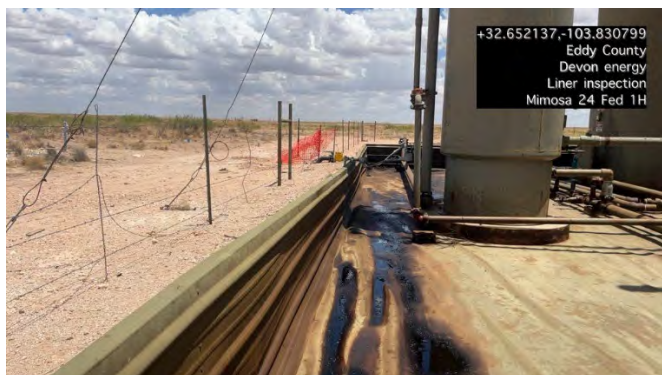
Pima Environmental Services, LLC
5614 N Lovington Hwy, Hobbs, NM 88240
575-964-7740 | www.pimaoil.com

Mimosa 24 Fed Battery | NAPP2035646158

DEVON ENERGY PRODUCTION, LP.

**SITE PHOTOGRAPHS
DEVON ENERGY
INITIAL LINER INSPECTION
MIMOSA 24 FED BATTERY**

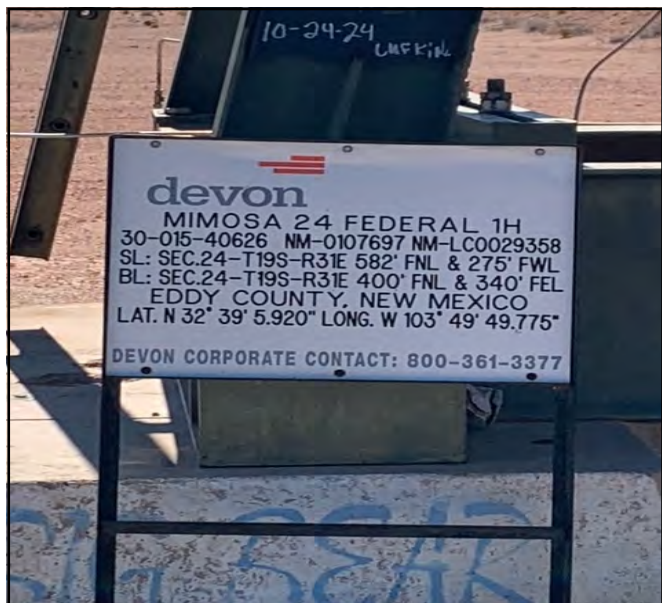




PHOTOGRAPHIC DOCUMENTATION

SITE NAME: Mimosa 24 Fed Battery

Liner Inspection :



Site Information sign.



Photo of liner taken facing northeast.

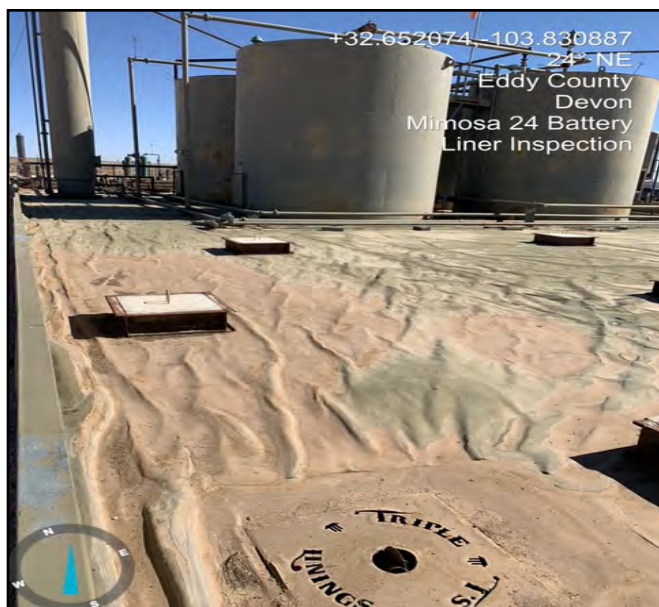


Photo of liner taken facing northeast.



Photo of liner taken facing south.



Photo of liner taken facing west.



Photo of liner taken facing northwest.



Aerial photo of liner.

Sante Fe Main Office
Phone: (505) 476-3441

General Information
Phone: (505) 629-6116

Online Phone Directory
<https://www.emnrd.nm.gov/ocd/contact-us>

State of New Mexico
Energy, Minerals and Natural Resources
Oil Conservation Division
1220 S. St Francis Dr.
Santa Fe, NM 87505

QUESTIONS

Action 438541

QUESTIONS

Operator: DEVON ENERGY PRODUCTION COMPANY, LP 333 West Sheridan Ave. Oklahoma City, OK 73102	OGRID: 6137
	Action Number: 438541
	Action Type: [C-141] Remediation Closure Request C-141 (C-141-v-Closure)

QUESTIONS

Prerequisites	
Incident ID (n#)	nAPP2035646158
Incident Name	NAPP2035646158 MIMOSA 24 FED BATTERY @ 0
Incident Type	Oil Release
Incident Status	Remediation Closure Report Received

Location of Release Source

Please answer all the questions in this group.

Site Name	MIMOSA 24 FED BATTERY
Date Release Discovered	12/06/2020
Surface Owner	Federal

Incident Details

Please answer all the questions in this group.

Incident Type	Oil Release
Did this release result in a fire or is the result of a fire	No
Did this release result in any injuries	No
Has this release reached or does it have a reasonable probability of reaching a watercourse	No
Has this release endangered or does it have a reasonable probability of endangering public health	No
Has this release substantially damaged or will it substantially damage property or the environment	No
Is this release of a volume that is or may with reasonable probability be detrimental to fresh water	No

Nature and Volume of Release

Material(s) released, please answer all that apply below. Any calculations or specific justifications for the volumes provided should be attached to the follow-up C-141 submission.

Crude Oil Released (bbls) Details	Cause: Other Other (Specify) Crude Oil Released: 13 BBL Recovered: 5 BBL Lost: 8 BBL.
Produced Water Released (bbls) Details	Not answered.
Is the concentration of chloride in the produced water >10,000 mg/l	Not answered.
Condensate Released (bbls) Details	Not answered.
Natural Gas Vented (Mcf) Details	Not answered.
Natural Gas Flared (Mcf) Details	Not answered.
Other Released Details	Not answered.
Are there additional details for the questions above (i.e. any answer containing Other, Specify, Unknown, and/or Fire, or any negative lost amounts)	Not answered.

Sante Fe Main Office
Phone: (505) 476-3441

General Information
Phone: (505) 629-6116

Online Phone Directory
<https://www.emnrd.nm.gov/ocd/contact-us>

State of New Mexico
Energy, Minerals and Natural Resources
Oil Conservation Division
1220 S. St Francis Dr.
Santa Fe, NM 87505

QUESTIONS, Page 2

Action 438541

QUESTIONS (continued)

Operator: DEVON ENERGY PRODUCTION COMPANY, LP 333 West Sheridan Ave. Oklahoma City, OK 73102	OGRID: 6137
	Action Number: 438541
	Action Type: [C-141] Remediation Closure Request C-141 (C-141-v-Closure)

QUESTIONS

Nature and Volume of Release (continued)	
Is this a gas only submission (i.e. only significant Mcf values reported)	No, according to supplied volumes this does not appear to be a "gas only" report.
Was this a major release as defined by Subsection A of 19.15.29.7 NMAC	No
Reasons why this would be considered a submission for a notification of a major release	Unavailable.
With the implementation of the 19.15.27 NMAC (05/25/2021), venting and/or flaring of natural gas (i.e. gas only) are to be submitted on the C-129 form.	

Initial Response

The responsible party must undertake the following actions immediately unless they could create a safety hazard that would result in injury.

The source of the release has been stopped	True
The impacted area has been secured to protect human health and the environment	True
Released materials have been contained via the use of berms or dikes, absorbent pads, or other containment devices	True
All free liquids and recoverable materials have been removed and managed appropriately	True
If all the actions described above have not been undertaken, explain why	Not answered.

Per Paragraph (4) of Subsection B of 19.15.29.8 NMAC the responsible party may commence remediation immediately after discovery of a release. If remediation has begun, please prepare and attach a narrative of actions to date in the follow-up C-141 submission. If remedial efforts have been successfully completed or if the release occurred within a lined containment area (see Subparagraph (a) of Paragraph (5) of Subsection A of 19.15.29.11 NMAC), please prepare and attach all information needed for closure evaluation in the follow-up C-141 submission.

I hereby certify that the information given above is true and complete to the best of my knowledge and understand that pursuant to OCD rules and regulations all operators are required to report and/or file certain release notifications and perform corrective actions for releases which may endanger public health or the environment. The acceptance of a C-141 report by the OCD does not relieve the operator of liability should their operations have failed to adequately investigate and remediate contamination that pose a threat to groundwater, surface water, human health or the environment. In addition, OCD acceptance of a C-141 report does not relieve the operator of responsibility for compliance with any other federal, state, or local laws and/or regulations.

I hereby agree and sign off to the above statement	Name: James Raley Title: EHS Professional Email: jim.raley@dv.com Date: 03/04/2025
----------------------------------------------------	---------------------------------------------------------------------------------------------

Sante Fe Main Office
Phone: (505) 476-3441

General Information
Phone: (505) 629-6116

Online Phone Directory
<https://www.emnrd.nm.gov/ocd/contact-us>

State of New Mexico
Energy, Minerals and Natural Resources
Oil Conservation Division
1220 S. St Francis Dr.
Santa Fe, NM 87505

QUESTIONS, Page 3

Action 438541

QUESTIONS (continued)

Operator: DEVON ENERGY PRODUCTION COMPANY, LP 333 West Sheridan Ave. Oklahoma City, OK 73102	OGRID: 6137
	Action Number: 438541
	Action Type: [C-141] Remediation Closure Request C-141 (C-141-v-Closure)

QUESTIONS

Site Characterization	
<i>Please answer all the questions in this group (only required when seeking remediation plan approval and beyond). This information must be provided to the appropriate district office no later than 90 days after the release discovery date.</i>	
What is the shallowest depth to groundwater beneath the area affected by the release in feet below ground surface (ft bgs)	Between 26 and 50 (ft.)
What method was used to determine the depth to ground water	NM OSE iWaters Database Search
Did this release impact groundwater or surface water	No
What is the minimum distance, between the closest lateral extents of the release and the following surface areas:	
A continuously flowing watercourse or any other significant watercourse	Greater than 5 (mi.)
Any lakebed, sinkhole, or playa lake (measured from the ordinary high-water mark)	Between 1 and 5 (mi.)
An occupied permanent residence, school, hospital, institution, or church	Greater than 5 (mi.)
A spring or a private domestic fresh water well used by less than five households for domestic or stock watering purposes	Greater than 5 (mi.)
Any other fresh water well or spring	Between 1 and 5 (mi.)
Incorporated municipal boundaries or a defined municipal fresh water well field	Greater than 5 (mi.)
A wetland	Between 1 and 5 (mi.)
A subsurface mine	Greater than 5 (mi.)
An (non-karst) unstable area	Greater than 5 (mi.)
Categorize the risk of this well / site being in a karst geology	Low
A 100-year floodplain	Greater than 5 (mi.)
Did the release impact areas not on an exploration, development, production, or storage site	No

Remediation Plan	
<i>Please answer all the questions that apply or are indicated. This information must be provided to the appropriate district office no later than 90 days after the release discovery date.</i>	
Requesting a remediation plan approval with this submission	Yes
<i>Attach a comprehensive report demonstrating the lateral and vertical extents of soil contamination associated with the release have been determined, pursuant to 19.15.29.11 NMAC and 19.15.29.13 NMAC.</i>	
Have the lateral and vertical extents of contamination been fully delineated	Yes
Was this release entirely contained within a lined containment area	Yes
<i>Per Subsection B of 19.15.29.11 NMAC unless the site characterization report includes completed efforts at remediation, the report must include a proposed remediation plan in accordance with 19.15.29.12 NMAC, which includes the anticipated timelines for beginning and completing the remediation.</i>	
On what estimated date will the remediation commence	02/27/2025
On what date will (or did) the final sampling or liner inspection occur	02/27/2025
On what date will (or was) the remediation complete(d)	02/27/2025
What is the estimated surface area (in square feet) that will be remediated	5677
What is the estimated volume (in cubic yards) that will be remediated	0
<i>These estimated dates and measurements are recognized to be the best guess or calculation at the time of submission and may (be) change(d) over time as more remediation efforts are completed.</i>	
<i>The OCD recognizes that proposed remediation measures may have to be minimally adjusted in accordance with the physical realities encountered during remediation. If the responsible party has any need to significantly deviate from the remediation plan proposed, then it should consult with the division to determine if another remediation plan submission is required.</i>	

Sante Fe Main Office
Phone: (505) 476-3441

General Information
Phone: (505) 629-6116

Online Phone Directory
<https://www.emnrd.nm.gov/ocd/contact-us>

State of New Mexico
Energy, Minerals and Natural Resources
Oil Conservation Division
1220 S. St Francis Dr.
Santa Fe, NM 87505

QUESTIONS, Page 4

Action 438541

QUESTIONS (continued)

Operator: DEVON ENERGY PRODUCTION COMPANY, LP 333 West Sheridan Ave. Oklahoma City, OK 73102	OGRID: 6137
	Action Number: 438541
	Action Type: [C-141] Remediation Closure Request C-141 (C-141-v-Closure)

QUESTIONS

Remediation Plan (continued)	
<i>Please answer all the questions that apply or are indicated. This information must be provided to the appropriate district office no later than 90 days after the release discovery date.</i>	
This remediation will (or is expected to) utilize the following processes to remediate / reduce contaminants:	
<i>(Select all answers below that apply.)</i>	
Is (or was) there affected material present needing to be removed	Yes
Is (or was) there a power wash of the lined containment area (to be) performed	Yes
OTHER (Non-listed remedial process)	Not answered.
<i>Per Subsection B of 19.15.29.11 NMAC unless the site characterization report includes completed efforts at remediation, the report must include a proposed remediation plan in accordance with 19.15.29.12 NMAC, which includes the anticipated timelines for beginning and completing the remediation.</i>	
I hereby certify that the information given above is true and complete to the best of my knowledge and understand that pursuant to OCD rules and regulations all operators are required to report and/or file certain release notifications and perform corrective actions for releases which may endanger public health or the environment. The acceptance of a C-141 report by the OCD does not relieve the operator of liability should their operations have failed to adequately investigate and remediate contamination that pose a threat to groundwater, surface water, human health or the environment. In addition, OCD acceptance of a C-141 report does not relieve the operator of responsibility for compliance with any other federal, state, or local laws and/or regulations.	
I hereby agree and sign off to the above statement	Name: James Raley Title: EHS Professional Email: jim.raley@dv.com Date: 03/04/2025
<i>The OCD recognizes that proposed remediation measures may have to be minimally adjusted in accordance with the physical realities encountered during remediation. If the responsible party has any need to significantly deviate from the remediation plan proposed, then it should consult with the division to determine if another remediation plan submission is required.</i>	

Sante Fe Main Office
Phone: (505) 476-3441

General Information
Phone: (505) 629-6116

Online Phone Directory
<https://www.emnrd.nm.gov/ocd/contact-us>

State of New Mexico
Energy, Minerals and Natural Resources
Oil Conservation Division
1220 S. St Francis Dr.
Santa Fe, NM 87505

QUESTIONS, Page 6

Action 438541

QUESTIONS (continued)

Operator: DEVON ENERGY PRODUCTION COMPANY, LP 333 West Sheridan Ave. Oklahoma City, OK 73102	OGRID: 6137
	Action Number: 438541
	Action Type: [C-141] Remediation Closure Request C-141 (C-141-v-Closure)

QUESTIONS

Liner Inspection Information	
Last liner inspection notification (C-141L) recorded	435273
Liner inspection date pursuant to Subparagraph (a) of Paragraph (5) of Subsection A of 19.15.29.11 NMAC	02/27/2025
Was all the impacted materials removed from the liner	Yes
What was the liner inspection surface area in square feet	5677

Remediation Closure Request

Only answer the questions in this group if seeking remediation closure for this release because all remediation steps have been completed.

Requesting a remediation closure approval with this submission	Yes
Have the lateral and vertical extents of contamination been fully delineated	Yes
Was this release entirely contained within a lined containment area	Yes
What was the total surface area (in square feet) remediated	5677
What was the total volume (cubic yards) remediated	0
Summarize any additional remediation activities not included by answers (above)	Liner inspection completed, proceeded with closure.

The responsible party must attach information demonstrating they have complied with all applicable closure requirements and any conditions or directives of the OCD. This demonstration should be in the form of a comprehensive report (in .pdf format) including a scaled site map, sampling diagrams, relevant field notes, photographs of any excavation prior to backfilling, laboratory data including chain of custody documents of final sampling, and a narrative of the remedial activities. Refer to 19.15.29.12 NMAC.

I hereby certify that the information given above is true and complete to the best of my knowledge and understand that pursuant to OCD rules and regulations all operators are required to report and/or file certain release notifications and perform corrective actions for releases which may endanger public health or the environment. The acceptance of a C-141 report by the OCD does not relieve the operator of liability should their operations have failed to adequately investigate and remediate contamination that pose a threat to groundwater, surface water, human health or the environment. In addition, OCD acceptance of a C-141 report does not relieve the operator of responsibility for compliance with any other federal, state, or local laws and/or regulations. The responsible party acknowledges they must substantially restore, reclaim, and re-vegetate the impacted surface area to the conditions that existed prior to the release or their final land use in accordance with 19.15.29.13 NMAC including notification to the OCD when reclamation and re-vegetation are complete.

I hereby agree and sign off to the above statement	Name: James Raley Title: EHS Professional Email: jim.raley@dv.com Date: 03/04/2025
----------------------------------------------------	---------------------------------------------------------------------------------------------

Sante Fe Main Office
Phone: (505) 476-3441

General Information
Phone: (505) 629-6116

Online Phone Directory
<https://www.emnrd.nm.gov/ocd/contact-us>

State of New Mexico
Energy, Minerals and Natural Resources
Oil Conservation Division
1220 S. St Francis Dr.
Santa Fe, NM 87505

CONDITIONS

Action 438541

CONDITIONS

Operator: DEVON ENERGY PRODUCTION COMPANY, LP 333 West Sheridan Ave. Oklahoma City, OK 73102	OGRID: 6137
	Action Number: 438541
	Action Type: [C-141] Remediation Closure Request C-141 (C-141-v-Closure)

CONDITIONS

Created By	Condition	Condition Date
rhamlet	We have received your Remediation Closure Report for Incident #NAPP2035646158 MIMOSA 24 FED BATTERY, thank you. This Remediation Closure Report is approved.	3/4/2025