



November 22, 2024

District Supervisor
Oil Conservation Division, District 1
1625 North French Drive
Hobbs, New Mexico 88240

**Re: Closure Report
ConocoPhillips (COG Production, LLC)
Windward Federal #006H Flowline Release
Unit Letter D, Section 30, Township 24 South, Range 32 East
DOR: 8/27/2024
Lea County, New Mexico
Incident ID: NAPP2425330502**

Sir or Madam:

Tetra Tech, Inc. (Tetra Tech) was contacted by ConocoPhillips Company (ConocoPhillips) to assess a release that occurred from a flowline associated with the Windward Federal #006H (facility fAPP2132638253). The release footprint is located within Public Land Survey System (PLSS) Unit Letter D, Section 30, Township 24 South, Range 32 East, in Lea County, New Mexico (Site). The approximate release point occurred at coordinates 32.1951, -103.7194, as shown on Figures 1 and 2.

BACKGROUND

According to the C-141 Initial Report, the release occurred on August 27, 2024, and was caused by flowline due to corrosion. Approximately 3 barrels (bbls) of oil and 3 bbls of produced water were reported released into a pasture area adjacent to the facility, and no fluid was recovered. The provided spill calculator indicates a release area of approximately 49 square feet. The New Mexico Oil Conservation Division (NMOCD) received the initial C-141 on September 9, 2024, and assigned the release the Incident ID NAPP2425330502. The C-141 is included as Appendix A.

This incident (NAPP2425330502) footprint was wholly contained within a prior, larger release extent from a release which occurred at the facility on June 21, 2023. The June 2023 release footprint is associated with the King Tut Federal CTB and was assigned Incident ID NAPP2319132381 (King Tut CTB Pasture Release). According to the NMOCD C-141 Initial Report associated with the June 2023 release, the NAPP2319132381 release was caused by a hole that developed in a flex line due to corrosion and 158.54 barrels (bbls) of produced water were reported released, of which 70 bbls were reported recovered. A Remediation Work Plan was submitted to the NMOCD for Incident ID NAPP2319132381. The Work Plan was approved by NMOCD on November 28, 2023. A copy of the approved Work Plan is available on the NMOCD online incident files.

LAND OWNERSHIP

According to the NMOCD Oil and Gas Map, the Site is located on land owned by the Bureau of Land Management (BLM). The BLM cleared the Site for remediation activities for the June 2023 release (NAPP2425330502). This Closure Report will be provided to the BLM for review and approve for concurrence.

Tetra Tech

901 West Wall St., Suite 100, Midland, TX 79701

Tel 432.682.4559

Fax 432.682.3946

www.tetrattech.com

SITE CHARACTERIZATION

A site characterization was performed and no sinkholes, residences, schools, hospitals, institutions, churches, stream bodies, springs, playa lakes, wetlands, incorporated municipal boundaries, subsurface mines, or floodplains are located within the distances specified in 19.15.29 New Mexico Administrative Code (NMAC). The Site is in an area of low karst potential.

According to the New Mexico Office of the State Engineer (NMOSE) reporting system, there is one well within a ½-mile (800-meter) radius of the Site, located approximately 0.40 miles (648 meters) east of the release point. This well has a total depth of 120 feet below ground surface (bgs) with no groundwater encountered. The nearest NMOSE-registered well with depth-to-water data is located 1.3 miles (2,098 meters) from the Site and has a depth to water of 135 feet bgs.

In addition to the available groundwater data, on September 15, 2022, borehole BH01 (New Mexico Office of the State Engineer (NMOSE) file number C-4665) was advanced to a depth of 120 feet bgs via air rotary drill rig under the oversight of Ensolum. The borehole was located approximately 0.4 miles east of the Site. A field geologist logged and described soils continuously. The borehole was left open for over 72 hours to allow for potential slow infill of groundwater. After the 72-hour waiting period, groundwater was not observed, and it was confirmed that groundwater beneath the Site is greater than 120 feet bgs. The borehole was properly abandoned using hydrated bentonite chips. The site characterization data is included in Appendix B.

REGULATORY FRAMEWORK

Based upon the release footprint and in accordance with Subsection E of 19.15.29.12 NMAC, per 19.15.29.11 NMAC, the site characterization data was used to determine recommended remedial action levels (RRALs) for benzene, toluene, ethylbenzene, and xylene (collectively referred to as BTEX), total petroleum hydrocarbons (TPH), and chlorides in soil.

Based on the site characterization and in accordance with Table I of 19.15.29.12 NMAC, the RRALs for the Site are as follows:

Constituent	Site RRALs
Chloride	20,000 mg/kg
TPH (GRO+DRO+ORO)	2,500 mg/kg
TPH (GRO+DRO)	1,000 mg/kg
BTEX	50 mg/kg
Benzene	10 mg/kg

Additionally, in accordance with the NMOCD guidance Procedures for Implementation of the Spill Rule (19.15.29 NMAC) (September 6, 2019), the following reclamation requirements for surface soils (0-4 feet bgs) outside of active oil and gas operations are as follows:

Constituent	Reclamation Requirements
Chloride	600 mg/kg
TPH (GRO+DRO+ORO)	100 mg/kg

SITE ASSESSMENT

The approximate release extent presented in Figure 3 was identified based on observations made from photographic documentation provided by ConocoPhillips. Based on observations made in the field, the release extent comprised an area of approximately 72 square feet.

As mentioned, the Work Plan for the King Tut Federal CTB Pasture Release (Incident ID NAPP2319132381) had been previously approved as of the date of release of NAPP2425330502. Based on the coincident release extents, the assessment activities (vertical delineation) associated with NAPP2425330502 occurred at the same time as the remedial activities for incident NAPP2319132381 were being conducted. Additionally, once the footprint was delineated, the remedial actions for both incidents were conducted simultaneously.

Thus, on October 3, 2024, Tetra Tech personnel were onsite to conduct assessment activities on behalf of ConocoPhillips for NAPP2425330502. Tetra Tech personnel installed one (1) trench (AH-1) within the release extent for vertical delineation. AH-1 was installed to 9 feet bgs within the observed release extent. Tetra Tech personnel field screened for salinity using an ExStik to determine the depth of delineation. Once screening results indicated that the analytical results appeared to be below the site reclamation limits, samples were collected.

One (1) soil sample was sent to Cardinal Laboratories in Hobbs, New Mexico (Cardinal) to be analyzed for chloride via Standard Method 4500Cl-B, TPH via EPA Method 8015M, and BTEX via EPA Method 8021B. A copy of the laboratory analytical reports and chain-of-custody documentation are included in Appendix C.

Analytical results from the October 2024 assessment activities are summarized in Table 1. The terminal analytical results associated with the deep sample location for AH-1 were below the reclamation limits. Vertical delineation of the NAPP2425330502 footprint was completed as a result of the assessment sampling event. The sampling location is presented in Figure 3.

REMEDATION ACTIVITIES AND CONFIRMATION SAMPLING

As described above, remedial activities for the Windward Federal #006 FL Release (NAPP2425330502), occurred concurrently with remedial activities associated with the King Tut Federal CTB Pasture Release (NAPP2319132381), as the subject incident release was wholly contained within the remedial footprint of the King Tut Federal CTB Pasture Release (NAPP2319132381). The release footprints for both the Windward Federal #006 (NAPP2425330502) and King Tut Federal CTB Pasture Release (NAPP2319132381) were located within an extremely congested pasture area immediately adjacent to two battery facilities. Utility line location work began at the King Tut Federal CTB Pasture Release (NAPP2319132381) on September 11; however, work was postponed as an active Plains line runs north south through the footprint and the Plains representative was not available. Work for the King Tut Federal CTB Pasture Release (NAPP2319132381) resumed on September 16 through October 10, 2024.

Tetra Tech personnel conducted remedial activities and confirmation sampling associated with the Windward Federal #006 FL Release (NAPP2425330502) on October 3 through October 4, 2024, in the release area for the within the NAPP2319132381 release footprint. Prior to confirmation sampling on October 1, 2024, the NMOC district office was notified via the OCD Portal (C-141N) in accordance with Subsection D of 19.15.29.12 NMAC. Documentation of associated regulatory correspondence is included in Appendix D.

All excavated material was transported offsite for proper disposal. Approximately 662 cubic yards of material were transported to the Northern Delaware Basin Landfill. This volume of excavated material includes the much smaller total of excavated soils (approximately 40 cy) from the Windward Federal #006 (NAPP2425330502). Copies of the waste manifests are included in Appendix E.

Following excavation, confirmation floor and sidewall samples were collected and submitted for laboratory analysis to verify efficacy of remediation activities. Confirmation samples were collected such that each discrete sample (sidewall and floor) was representative of no more than 200 square feet of excavated area. Two (2) confirmation floor sample locations and four (4) confirmation sidewall sample locations were collected for laboratory analysis during remedial activities. Confirmation sidewall sample locations were categorized with the cardinal direction (N, E, S, W) followed by SW-#. Confirmation floor sample locations were labeled with "FS"-#. Given that the Windward Federal #006 (NAPP2425330502) extent was wholly

contained in the King Tut Federal CTB Pasture Release (NAPP2319132381) footprint, one confirmation sample location (FS-2) was shared over the two projects, and the analytical report associated with FS-2 is included in this report (consequently labeled as King Tut). The location of FS-2 is indicated in Figure 4. Photographs from the excavated areas prior to backfill are provided in Appendix F.

Collected confirmation samples were placed into laboratory-provided sample containers, transferred under chain-of-custody, and analyzed within appropriate holding times by Cardinal. The soil samples were analyzed for TPH (GRO+DRO+MRO) by EPA Method 8015M, BTEX by EPA Method 8021B, and chlorides by SM4500Cl-B. The analytical results were directly compared to the reclamation limits and established Site RRALs to demonstrate compliance. The results of the October 2024 confirmation sampling events are summarized in Table 2. All final confirmation soil samples (floor and sidewall) were below applicable cleanup levels for chloride, TPH, and BTEX. Copies of laboratory analysis and chain-of-custody documentation are included in Appendix C.

RECLAMATION ACTIVITIES

Based on 19.15.29.13 NMAC, areas disturbed by the remediation have been reclaimed. Collected confirmation samples were placed into laboratory-provided sample containers, transferred under chain-of-custody, and analyzed within appropriate holding times by Cardinal. The soil samples were analyzed for TPH (GRO+DRO+MRO) by EPA Method 8015M, BTEX by EPA Method 8021B, and chlorides by SM4500Cl-B. The analytical results were directly compared to the reclamation requirements and established Site RRALs to demonstrate compliance. All final confirmation soil samples (floor and sidewall) were below the reclamation limits for chloride, TPH, and BTEX. Excavated areas, depths and confirmation sample locations are indicated in Figure 4. The results of the October 2024 confirmation sampling events are summarized in Table 2.

Once acceptable confirmation sample results were received, the excavation was backfilled with clean material to pre-release grade. In accordance with 19.15.29.12 NMAC, the reclaimed area contained a minimum of four feet of non-waste containing, uncontaminated, earthen material with chloride concentrations less than 600 mg/kg as analyzed by SM4500Cl-B. The soil cover included a top layer consisting of one foot of suitable material to establish vegetation at the site. The backfilled areas in the pasture were seeded following backfilling, to aid in revegetation. Based on the soils of the site, the BLM Seed Mix #2 was used for seeding and was planted in the amount specified in the pounds pure live seed (PLS) per acre. One (1) representative 5-point composite sample was collected from the backfill material used for the reclamation of the project site. Soil backfill composite sampling results are summarized in Table 3. Copies of laboratory analysis and chain-of-custody documentation are included in Appendix C. The final reclaimed and seeded area is indicated in Figure 5.

Site inspections will be performed annually to assess the revegetation progress and evaluate the site for the presence of primary or secondary noxious weeds. If noxious weeds are identified, the NMSLO will be contacted to determine an effective method for eradication. If the site does not show revegetation after one growing season, the area will be reseeded as appropriate. Reclamation activities have been implemented in consultation with the BLM.

Closure Report
November 22, 2024

ConocoPhillips

CONCLUSION

ConocoPhillips respectfully requests closure of the incident based on the confirmation sampling results and remedial activities performed. Horizontal and vertical delineation was completed via assessment and confirmation sampling. The final C-141 forms are enclosed in Appendix A.

Sincerely,
Tetra Tech, Inc.



Lisbeth Chavira
Geoscientist



Christian M. Llull, P.G.
Program Manager

cc: Mr. Jacob Laird, GPBU – ConocoPhillips

Closure Report
November 22, 2024

ConocoPhillips

LIST OF ATTACHMENTS

Figures:

- Figure 1 – Overview Map
- Figure 2 – Topographic Map
- Figure 3 – Site Assessment Map
- Figure 4 – Release Remediation and Confirmation Sampling Map
- Figure 5 – Reclamation and Restoration Area

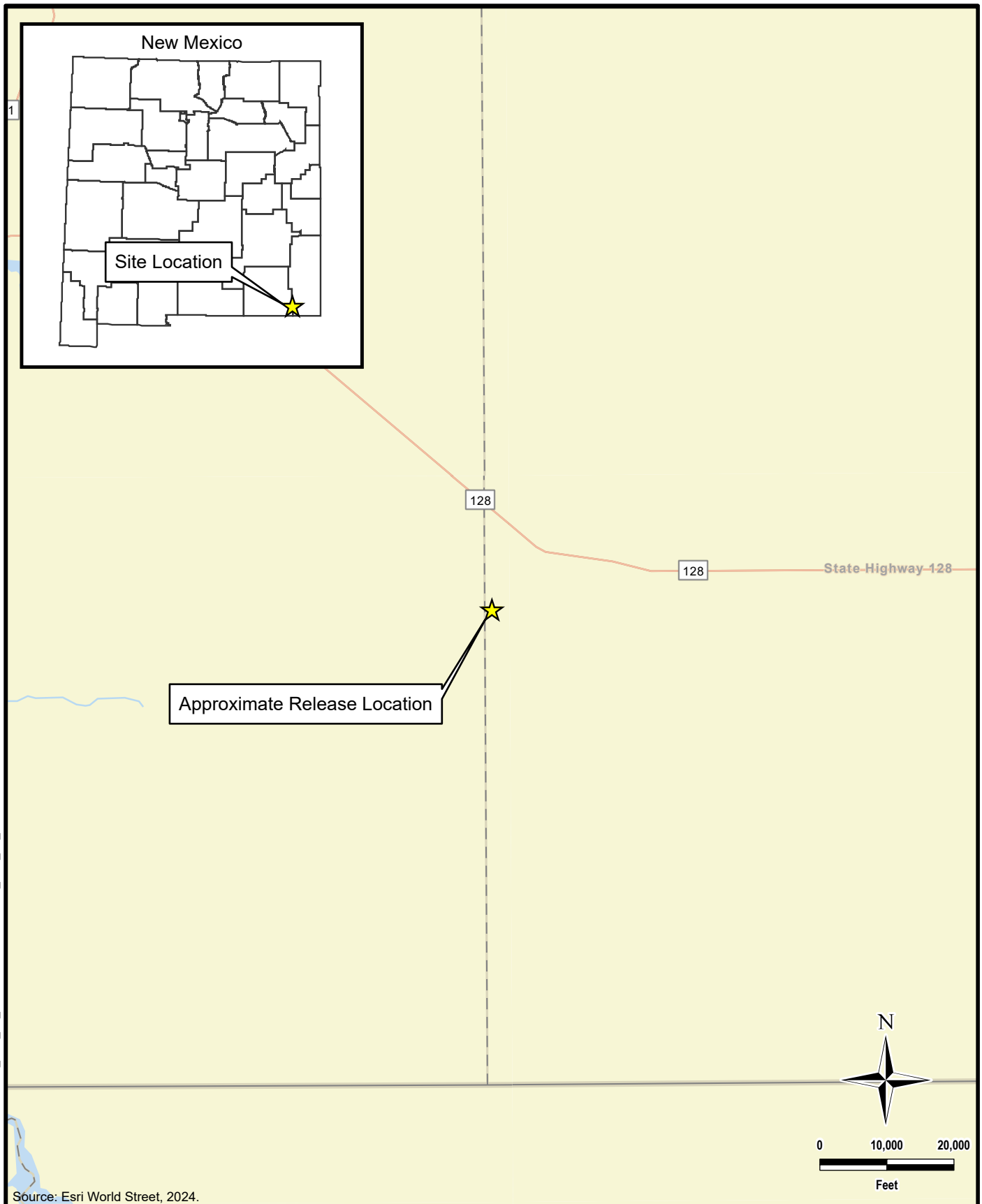
Tables:

- Table 1 – Summary of Analytical Results – Soil Assessment
- Table 2 – Summary of Analytical Results – Soil Remediation
- Table 3 – Summary of Analytical Results – Soil Backfill

Appendices:

- Appendix A – C-141 Forms
- Appendix B – Site Characterization Data
- Appendix C – Laboratory Analytical Data
- Appendix D – Regulatory Correspondence
- Appendix E – Waste Manifests
- Appendix F – Photographic Documentation

FIGURES



Source: Esri World Street, 2024.



TETRA TECH

www.tetrattech.com

901 West Wall Street, Suite 100
Midland, Texas 79701
Phone: (432) 682-4559
Fax: (432) 682-3946

CONOCOPHILLIPS

NAPP2425330502
(32.1951°, -103.7194°)
LEA COUNTY, NEW MEXICO

**WINDWARD FEDERAL #006H FLOWLINE RELEASE
OVERVIEW MAP**

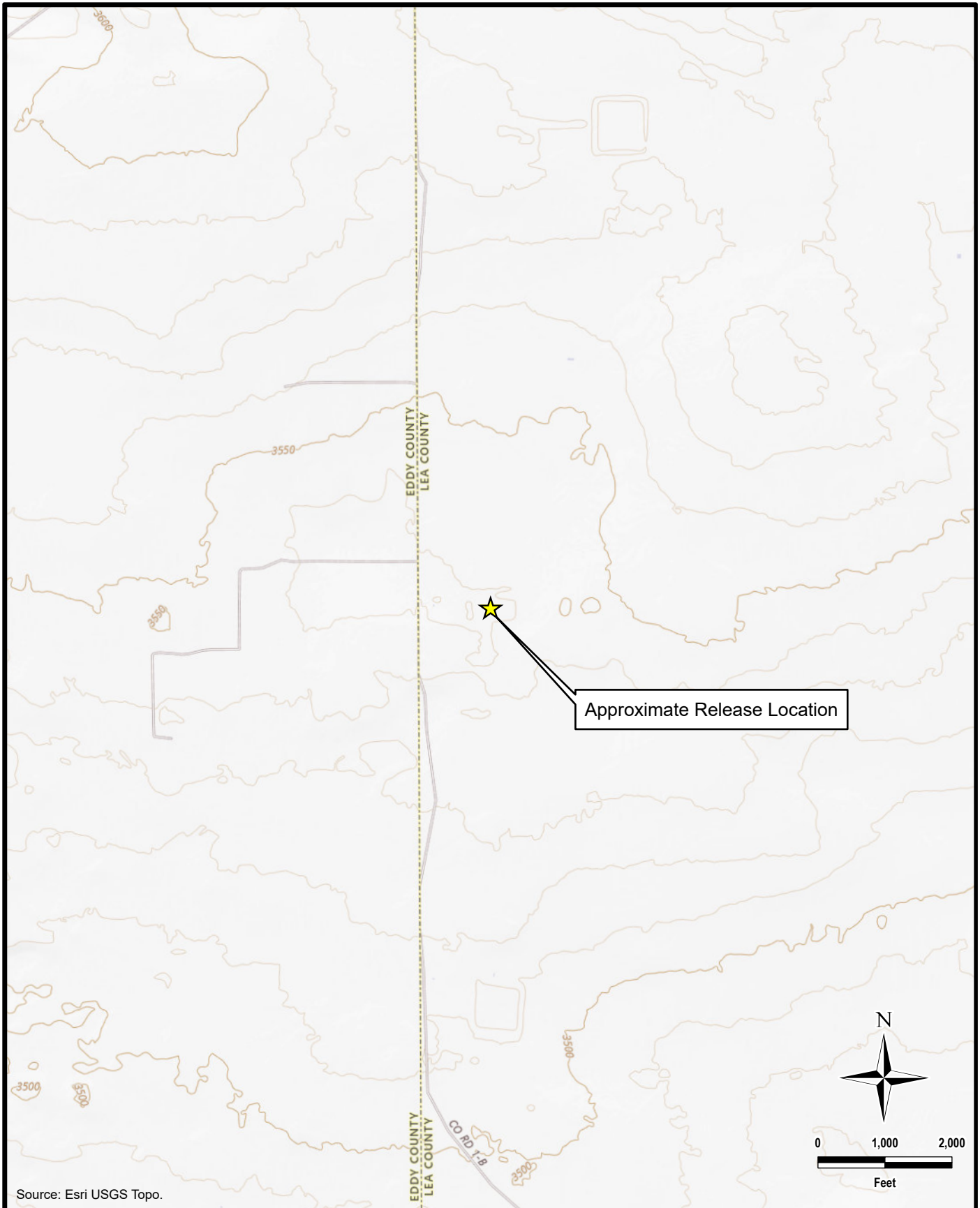
PROJECT NO.: 212C-MD-03643

DATE: NOVEMBER 11, 2024


DESIGNED BY: LMV

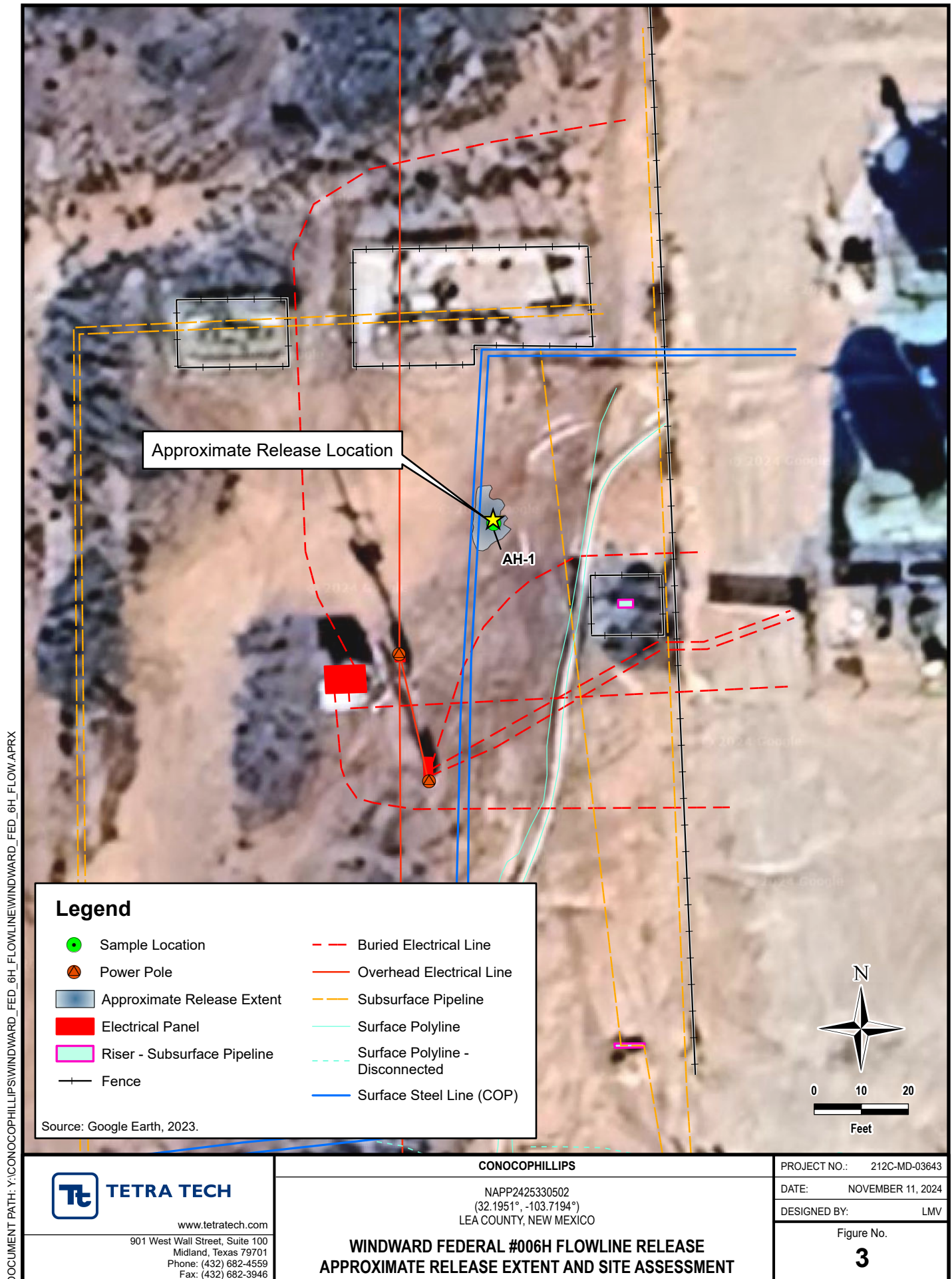
Figure No.

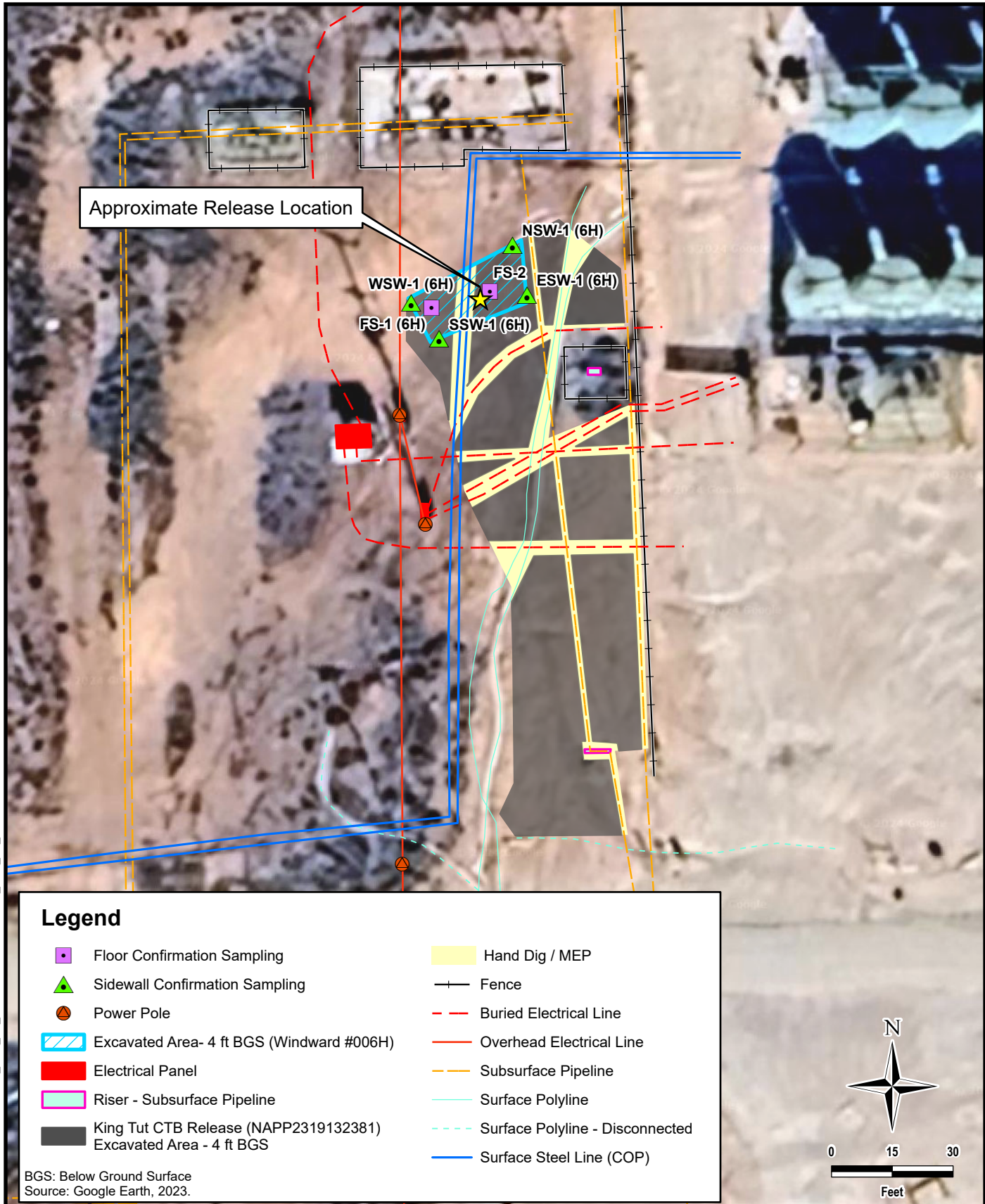
1



DOCUMENT PATH: Y:\CONOCOPHILLIPS\WINDWARD_FED_6H_FLOWLINE\WINDWARD_FED_6H_FLOW.APRX

<div>TETRA TECH</div> <div>www.tetrattech.com</div> <div>901 West Wall Street, Suite 100 Midland, Texas 79701 Phone: (432) 682-4559 Fax: (432) 682-3946</div>	CONOCOPHILLIPS		PROJECT NO.: 212C-MD-03643
	NAPP2425330502 (32.1951°, -103.7194°) LEA COUNTY, NEW MEXICO		DATE: NOVEMBER 11, 2024
	WINDWARD FEDERAL #006H FLOWLINE RELEASE TOPOGRAPHIC MAP		DESIGNED BY: LMV
			Figure No. 2





DOCUMENT PATH: Y:\CONOCOPHILLIPS\WINDWARD_FED_6H_FLOWLINE\WINDWARD_FED_6H_FLOW.APRX



TETRA TECH

www.tetrattech.com

901 West Wall Street, Suite 100
Midland, Texas 79701
Phone: (432) 682-4559
Fax: (432) 682-3946

CONOCOPHILLIPS

NAPP2425330502
(32.1951°, -103.7194°)
LEA COUNTY, NEW MEXICO

**WINDWARD FEDERAL #006H FLOWLINE RELEASE
REMEDATION EXTENT AND CONFIRMATION SAMPLING LOCATIONS**

PROJECT NO.: 212C-MD-03643

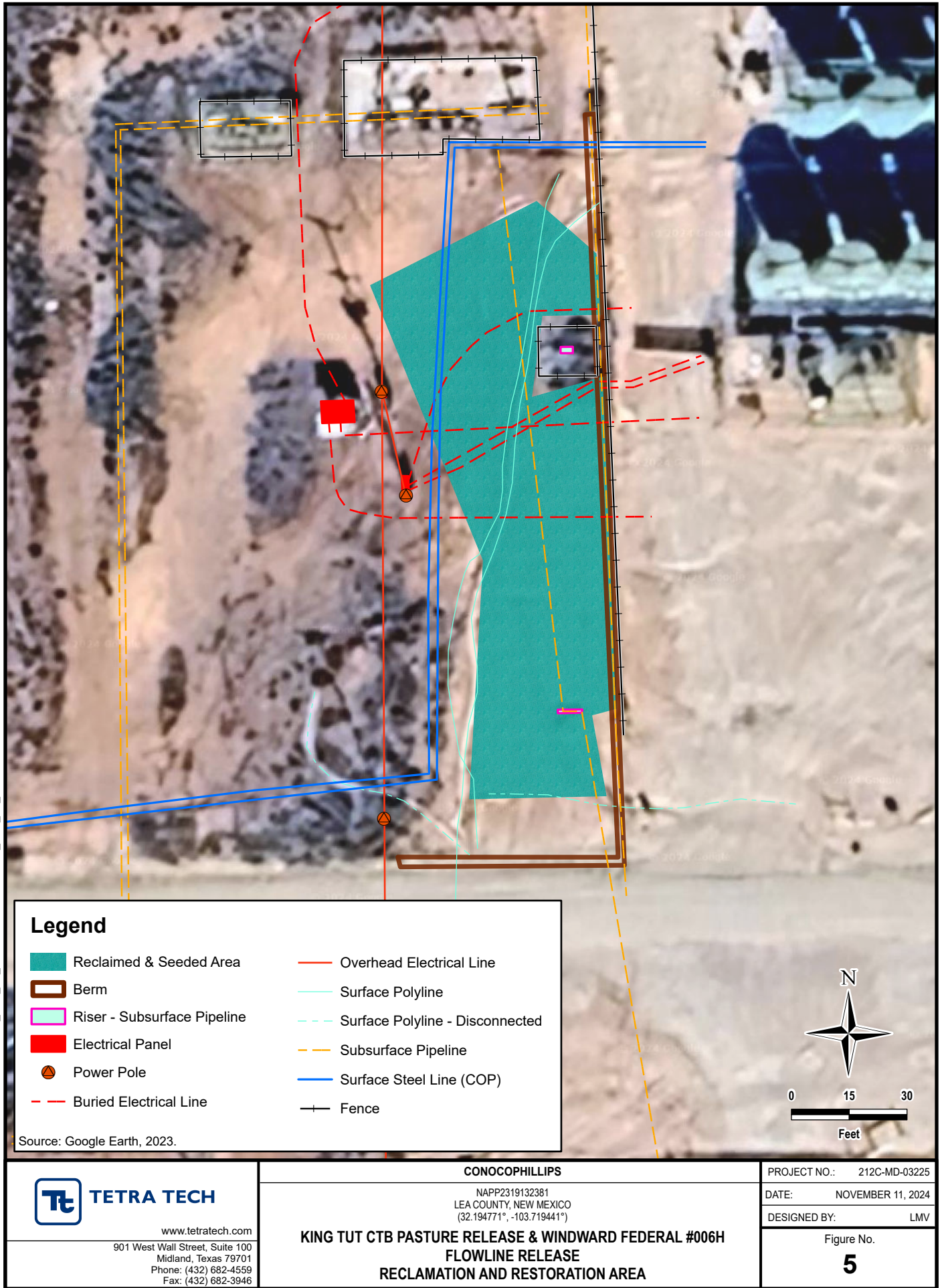
DATE: NOVEMBER 11, 2024

DESIGNED BY: LMV

Figure No.

4

DOCUMENT PATH: Y:\CONOCOPHILLIPS\WINDWARD_FED_6H_FLOWLINE\WINDWARD_FED_6H_FLOW.APRX



TABLES

TABLE 1
SUMMARY OF ANALYTICAL RESULTS
SOIL ASSESSMENT- NAPP2425330502
CONOCOPHILLIPS
WINDWARD FEDERAL #006H
LEA COUNTY, NEW MEXICO

19.15.29.12 NMAC Closure Criteria for Soils Impacted by a Release (> 100 ft):					Chlorides ¹		BTEX ²										TPH ³							
					20,000 mg/kg		< 10 mg/kg		Toluene		Ethylbenzene		Total Xylenes		< 50 mg/kg		GRO		DRO		EXT DRO		2,500 mg/kg	
Sample ID	Sample Date	Sample Depth Interval	Field Screening Results		Chloride		Benzene								Total BTEX								Total TPH (GRO+DRO+EXT DRO)	
			Chlorides	PID															C ₆ - C ₁₀		> C ₁₀ - C ₂₈		> C ₂₈ - C ₃₆	
			ft. bgs		ppm		mg/kg	Q	mg/kg	Q	mg/kg	Q	mg/kg	Q	mg/kg	Q	mg/kg	Q	mg/kg	Q	mg/kg	Q	mg/kg	
AH-1	10/3/2024	8-9			400		<0.050		<0.050		<0.050		<0.150		<0.300		<10.0		<10.0		<10.0		-	

NOTES:

ft. Feet

bgs Below ground surface

mg/kg Milligrams per kilogram

TPH Total Petroleum Hydrocarbons

GRO Gasoline range organics

DRO Diesel range organics

1 Method SM4500Cl-B

2 Method 8021B

3 Method 8015M

Bold and italicized values indicate exceedance of proposed RRALs and Reclamation Requirements.

Shaded rows indicate intervals proposed for excavation.

QUALIFIERS:

TABLE 2
SUMMARY OF ANALYTICAL RESULTS
2024 SOIL REMEDIATION - NAPP2425330502
CONOCOPHILLIPS
WINDWARD FEDERAL #006H
LEA COUNTY, NEW MEXICO

Sample ID	Sample Date	Sample Depth	Chloride ¹		BTEx ²										TPH ³							
					Benzene		Toluene		Ethylbenzene		Total Xylenes		Total BTEx		Gro		Dro		Ext Dro		Total TPH (Gro+Dro+Ext Dro)	
		C ₆ - C ₁₀	> C ₁₀ - C ₂₈	> C ₂₈ - C ₃₆	mg/kg	Q	mg/kg	Q	mg/kg	Q	mg/kg	Q	mg/kg	Q	mg/kg	Q	mg/kg	Q	mg/kg	Q		
FS-1	10/3/2024	4	2,160		<0.050		<0.050		<0.050		<0.150		<0.300		<10.0		<10.0		<10.0		-	
FS-2	10/3/2024	4	784		<0.050		<0.050		<0.050		<0.150		<0.300		<10.0		<10.0		<10.0		-	
NSW-1	10/3/2024	-	32		<0.050		<0.050		<0.050		<0.150		<0.300		<10.0		<10.0		<10.0		-	
ESW-1	10/3/2024	-	64		<0.050		<0.050		<0.050		<0.150		<0.300		<10.0		<10.0		<10.0		-	
SSW-1	10/3/2024	-	64		<0.050		<0.050		<0.050		<0.150		<0.300		<10.0		<10.0		<10.0		-	
WSW-1	10/3/2024	-	80		<0.050		<0.050		<0.050		<0.150		<0.300		<10.0		<10.0		<10.0		-	

NOTES:

ft. Feet

bgs Below ground surface

mg/kg Milligrams per kilogram

TPH Total Petroleum Hydrocarbons

GRO Gasoline range organics

DRO Diesel range organics

1 Method SM4500Cl-B

2 Method 8021B

3 Method 8015M

Bold and italicized values indicate exceedance of proposed Remediation RRALs and Reclamation Requirements.

Gold highlight represents soil horizons that were removed during deepening of excavation floors.

Green highlight represents soil intervals that were removed during horizontal expansion of excavation sidewalls.

* These iterative samples are located to encompass the original sample location that triggered removal, with further excavation in each area indicated in ().

TABLE 3
SUMMARY OF ANALYTICAL RESULTS
TWIN WELLS BUCKTHORN PIT - SOIL BACKFILL
CONOCOPHILLIPS
32.152167°, -103.773445°
LEA COUNTY, NM

Sample ID	Sample Date	Chloride ¹		BTEX ²										TPH ³						
				Benzene		Toluene		Ethylbenzene		Total Xylenes		Total BTEX		GRO		DRO		EXT DRO		Total TPH
		C ₆ - C ₁₀												> C ₁₀ - C ₂₈		> C ₂₈ - C ₃₆		(GRO+DRO+EXT DRO)		
		mg/kg	Q	mg/kg	Q	mg/kg	Q	mg/kg	Q	mg/kg	Q	mg/kg	Q	mg/kg	Q	mg/kg	Q		mg/kg	Q
BACKFILL - COMPOSITE	3/26/2024	16		<0.050	Q	<0.050	Q	<0.050	Q	<0.150	Q	<0.300	Q	<10.0	Q	<10.0	Q	<10.0	Q	-

NOTES:

ft. Feet

bgs Below ground surface

mg/kg Milligrams per kilogram

TPH Total Petroleum Hydrocarbons

GRO Gasoline range organics

DRO Diesel range organics

1 Method SM4500Cl-B

2 Method 8021B

3 Method 8015M

APPENDIX A C-141 Forms

District I
1625 N. French Dr., Hobbs, NM 88240
Phone:(575) 393-6161 Fax:(575) 393-0720
District II
811 S. First St., Artesia, NM 88210
Phone:(575) 748-1283 Fax:(575) 748-9720
District III
1000 Rio Brazos Rd., Aztec, NM 87410
Phone:(505) 334-6178 Fax:(505) 334-6170
District IV
1220 S. St Francis Dr., Santa Fe, NM 87505
Phone:(505) 476-3470 Fax:(505) 476-3462

State of New Mexico
Energy, Minerals and Natural Resources
Oil Conservation Division
1220 S. St Francis Dr.
Santa Fe, NM 87505

QUESTIONS

Action 381533

QUESTIONS

Operator: COG PRODUCTION, LLC 600 W. Illinois Ave Midland, TX 79701	OGRID: 217955
	Action Number: 381533
	Action Type: [C-141] Initial C-141 (C-141-v-Initial)

QUESTIONS

Prerequisites	
Incident ID (n#)	nAPP2425330502
Incident Name	NAPP2425330502 WINDWARD FEDERAL 006H @ 0
Incident Type	Release Other
Incident Status	Initial C-141 Received
Incident Facility	[fAPP2132638253] WINDWARD FED 2H - BATTERY

Location of Release Source	
Please answer all the questions in this group.	
Site Name	Windward Federal 006H
Date Release Discovered	08/27/2024
Surface Owner	Federal

Incident Details	
Please answer all the questions in this group.	
Incident Type	Release Other
Did this release result in a fire or is the result of a fire	No
Did this release result in any injuries	No
Has this release reached or does it have a reasonable probability of reaching a watercourse	No
Has this release endangered or does it have a reasonable probability of endangering public health	No
Has this release substantially damaged or will it substantially damage property or the environment	No
Is this release of a volume that is or may with reasonable probability be detrimental to fresh water	No

Nature and Volume of Release	
Material(s) released, please answer all that apply below. Any calculations or specific justifications for the volumes provided should be attached to the follow-up C-141 submission.	
Crude Oil Released (bbls) Details	Cause: Corrosion Flow Line - Production Crude Oil Released: 3 BBL Recovered: 0 BBL Lost: 3 BBL.
Produced Water Released (bbls) Details	Cause: Corrosion Flow Line - Production Produced Water Released: 3 BBL Recovered: 0 BBL Lost: 3 BBL.
Is the concentration of chloride in the produced water >10,000 mg/l	Yes
Condensate Released (bbls) Details	Not answered.
Natural Gas Vented (Mcf) Details	Not answered.
Natural Gas Flared (Mcf) Details	Not answered.
Other Released Details	Not answered.
Are there additional details for the questions above (i.e. any answer containing Other, Specify, Unknown, and/or Fire, or any negative lost amounts)	Not answered.

District I
1625 N. French Dr., Hobbs, NM 88240
Phone:(575) 393-6161 Fax:(575) 393-0720

District II
811 S. First St., Artesia, NM 88210
Phone:(575) 748-1283 Fax:(575) 748-9720

District III
1000 Rio Brazos Rd., Aztec, NM 87410
Phone:(505) 334-6178 Fax:(505) 334-6170

District IV
1220 S. St Francis Dr., Santa Fe, NM 87505
Phone:(505) 476-3470 Fax:(505) 476-3462

State of New Mexico
Energy, Minerals and Natural Resources
Oil Conservation Division
1220 S. St Francis Dr.
Santa Fe, NM 87505

QUESTIONS, Page 2

Action 381533

QUESTIONS (continued)

Operator: COG PRODUCTION, LLC 600 W. Illinois Ave Midland, TX 79701	OGRID: 217955
	Action Number: 381533
	Action Type: [C-141] Initial C-141 (C-141-v-Initial)

QUESTIONS

Nature and Volume of Release (continued)	
Is this a gas only submission (i.e. only significant Mcf values reported)	No, according to supplied volumes this does not appear to be a "gas only" report.
Was this a major release as defined by Subsection A of 19.15.29.7 NMAC	No
Reasons why this would be considered a submission for a notification of a major release	Unavailable.
With the implementation of the 19.15.27 NMAC (05/25/2021), venting and/or flaring of natural gas (i.e. gas only) are to be submitted on the C-129 form.	

Initial Response

The responsible party must undertake the following actions immediately unless they could create a safety hazard that would result in injury.

The source of the release has been stopped	True
The impacted area has been secured to protect human health and the environment	True
Released materials have been contained via the use of berms or dikes, absorbent pads, or other containment devices	True
All free liquids and recoverable materials have been removed and managed appropriately	True
If all the actions described above have not been undertaken, explain why	Not answered.

Per Paragraph (4) of Subsection B of 19.15.29.8 NMAC the responsible party may commence remediation immediately after discovery of a release. If remediation has begun, please prepare and attach a narrative of actions to date in the follow-up C-141 submission. If remedial efforts have been successfully completed or if the release occurred within a lined containment area (see Subparagraph (a) of Paragraph (5) of Subsection A of 19.15.29.11 NMAC), please prepare and attach all information needed for closure evaluation in the follow-up C-141 submission.

I hereby certify that the information given above is true and complete to the best of my knowledge and understand that pursuant to OCD rules and regulations all operators are required to report and/or file certain release notifications and perform corrective actions for releases which may endanger public health or the environment. The acceptance of a C-141 report by the OCD does not relieve the operator of liability should their operations have failed to adequately investigate and remediate contamination that pose a threat to groundwater, surface water, human health or the environment. In addition, OCD acceptance of a C-141 report does not relieve the operator of responsibility for compliance with any other federal, state, or local laws and/or regulations.

I hereby agree and sign off to the above statement	Name: Brittany Esparza Title: Environmental Technician Email: brittany.Esparza@ConocoPhillips.com Date: 09/09/2024
--	---

District I

1625 N. French Dr., Hobbs, NM 88240
Phone:(575) 393-6161 Fax:(575) 393-0720

District II

811 S. First St., Artesia, NM 88210
Phone:(575) 748-1283 Fax:(575) 748-9720

District III

1000 Rio Brazos Rd., Aztec, NM 87410
Phone:(505) 334-6178 Fax:(505) 334-6170

District IV

1220 S. St Francis Dr., Santa Fe, NM 87505
Phone:(505) 476-3470 Fax:(505) 476-3462

State of New Mexico
Energy, Minerals and Natural Resources
Oil Conservation Division
1220 S. St Francis Dr.
Santa Fe, NM 87505

QUESTIONS, Page 3

Action 381533

QUESTIONS (continued)

Operator: COG PRODUCTION, LLC 600 W. Illinois Ave Midland, TX 79701	OGRID: 217955
	Action Number: 381533
	Action Type: [C-141] Initial C-141 (C-141-v-Initial)

QUESTIONS**Site Characterization**

Please answer all the questions in this group (only required when seeking remediation plan approval and beyond). This information must be provided to the appropriate district office no later than 90 days after the release discovery date.

What is the shallowest depth to groundwater beneath the area affected by the release in feet below ground surface (ft bgs)	Not answered.
What method was used to determine the depth to ground water	Not answered.
Did this release impact groundwater or surface water	Not answered.
What is the minimum distance, between the closest lateral extents of the release and the following surface areas:	
A continuously flowing watercourse or any other significant watercourse	Not answered.
Any lakebed, sinkhole, or playa lake (measured from the ordinary high-water mark)	Not answered.
An occupied permanent residence, school, hospital, institution, or church	Not answered.
A spring or a private domestic fresh water well used by less than five households for domestic or stock watering purposes	Not answered.
Any other fresh water well or spring	Not answered.
Incorporated municipal boundaries or a defined municipal fresh water well field	Not answered.
A wetland	Not answered.
A subsurface mine	Not answered.
An (non-karst) unstable area	Not answered.
Categorize the risk of this well / site being in a karst geology	Not answered.
A 100-year floodplain	Not answered.
Did the release impact areas not on an exploration, development, production, or storage site	Not answered.

Remediation Plan

Please answer all the questions that apply or are indicated. This information must be provided to the appropriate district office no later than 90 days after the release discovery date.

Requesting a remediation plan approval with this submission	No
The OCD recognizes that proposed remediation measures may have to be minimally adjusted in accordance with the physical realities encountered during remediation. If the responsible party has any need to significantly deviate from the remediation plan proposed, then it should consult with the division to determine if another remediation plan submission is required.	

District I
1625 N. French Dr., Hobbs, NM 88240
Phone:(575) 393-6161 Fax:(575) 393-0720

District II
811 S. First St., Artesia, NM 88210
Phone:(575) 748-1283 Fax:(575) 748-9720

District III
1000 Rio Brazos Rd., Aztec, NM 87410
Phone:(505) 334-6178 Fax:(505) 334-6170

District IV
1220 S. St Francis Dr., Santa Fe, NM 87505
Phone:(505) 476-3470 Fax:(505) 476-3462

State of New Mexico
Energy, Minerals and Natural Resources
Oil Conservation Division
1220 S. St Francis Dr.
Santa Fe, NM 87505

CONDITIONS

Action 381533

CONDITIONS

Operator: COG PRODUCTION, LLC 600 W. Illinois Ave Midland, TX 79701	OGRID: 217955
	Action Number: 381533
	Action Type: [C-141] Initial C-141 (C-141-v-Initial)

CONDITIONS

Created By	Condition	Condition Date
nvelez	None	9/9/2024

Spill Calculation - On-Pad Surface Pool Spill

Convert Irregular shape into a series of rectangles	Length (ft.)	Width (ft.)	Average Depth (in.)	Estimated <u>Pool</u> Area (sq. ft.)	Estimated volume of each pool area (bbl.)	Penetration allowance (ft.)	Total Estimated Volume of Spill (bbl.)	Percentage of Oil if Spilled Fluid is a Mixture (%)	Total Estimated Volume of Spilled Oil (bbl.)	Total Estimated Volume of Spilled Liquid other than Oil (bbl.)
Rectangle A	7	7	17.0	49.00	4.94	0.07	5.29	50%	2.65	2.65
Rectangle B				0.00	0.00	0.00	0.00		0.00	0.00
Rectangle C				0.00	0.00	0.00	0.00		0.00	0.00
Rectangle D				0.00	0.00	0.00	0.00		0.00	0.00
Rectangle E				0.00	0.00	0.00	0.00		0.00	0.00
Rectangle F				0.00	0.00	0.00	0.00		0.00	0.00
Rectangle G				0.00	0.00	0.00	0.00		0.00	0.00
Rectangle H				0.00	0.00	0.00	0.00		0.00	0.00
Rectangle I				0.00	0.00	0.00	0.00		0.00	0.00
Rectangle J				0.00	0.00	0.00	0.00		0.00	0.00
Total Volume Released to Unlined Secondary Containment:							5.2926		2.6463	2.6463

Incident ID	
District RP	
Facility ID	
Application ID	

Site Assessment/Characterization

This information must be provided to the appropriate district office no later than 90 days after the release discovery date.

What is the shallowest depth to groundwater beneath the area affected by the release?	_____ (ft bgs)
Did this release impact groundwater or surface water?	<input type="checkbox"/> Yes <input type="checkbox"/> No
Are the lateral extents of the release within 300 feet of a continuously flowing watercourse or any other significant watercourse?	<input type="checkbox"/> Yes <input type="checkbox"/> No
Are the lateral extents of the release within 200 feet of any lakebed, sinkhole, or playa lake (measured from the ordinary high-water mark)?	<input type="checkbox"/> Yes <input type="checkbox"/> No
Are the lateral extents of the release within 300 feet of an occupied permanent residence, school, hospital, institution, or church?	<input type="checkbox"/> Yes <input type="checkbox"/> No
Are the lateral extents of the release within 500 horizontal feet of a spring or a private domestic fresh water well used by less than five households for domestic or stock watering purposes?	<input type="checkbox"/> Yes <input type="checkbox"/> No
Are the lateral extents of the release within 1000 feet of any other fresh water well or spring?	<input type="checkbox"/> Yes <input type="checkbox"/> No
Are the lateral extents of the release within incorporated municipal boundaries or within a defined municipal fresh water well field?	<input type="checkbox"/> Yes <input type="checkbox"/> No
Are the lateral extents of the release within 300 feet of a wetland?	<input type="checkbox"/> Yes <input type="checkbox"/> No
Are the lateral extents of the release overlying a subsurface mine?	<input type="checkbox"/> Yes <input type="checkbox"/> No
Are the lateral extents of the release overlying an unstable area such as karst geology?	<input type="checkbox"/> Yes <input type="checkbox"/> No
Are the lateral extents of the release within a 100-year floodplain?	<input type="checkbox"/> Yes <input type="checkbox"/> No
Did the release impact areas not on an exploration, development, production, or storage site?	<input type="checkbox"/> Yes <input type="checkbox"/> No

Attach a comprehensive report (electronic submittals in .pdf format are preferred) demonstrating the lateral and vertical extents of soil contamination associated with the release have been determined. Refer to 19.15.29.11 NMAC for specifics.

Characterization Report Checklist: *Each of the following items must be included in the report.*

- ☐ Scaled site map showing impacted area, surface features, subsurface features, delineation points, and monitoring wells.
- ☐ Field data
- ☐ Data table of soil contaminant concentration data
- ☐ Depth to water determination
- ☐ Determination of water sources and significant watercourses within ½-mile of the lateral extents of the release
- ☐ Boring or excavation logs
- ☐ Photographs including date and GIS information
- ☐ Topographic/Aerial maps
- ☐ Laboratory data including chain of custody

If the site characterization report does not include completed efforts at remediation of the release, the report must include a proposed remediation plan. That plan must include the estimated volume of material to be remediated, the proposed remediation technique, proposed sampling plan and methods, anticipated timelines for beginning and completing the remediation. The closure criteria for a release are contained in Table 1 of 19.15.29.12 NMAC, however, use of the table is modified by site- and release-specific parameters.

State of New Mexico
Oil Conservation Division

Page 4

Incident ID	
District RP	
Facility ID	
Application ID	

I hereby certify that the information given above is true and complete to the best of my knowledge and understand that pursuant to OCD rules and regulations all operators are required to report and/or file certain release notifications and perform corrective actions for releases which may endanger public health or the environment. The acceptance of a C-141 report by the OCD does not relieve the operator of liability should their operations have failed to adequately investigate and remediate contamination that pose a threat to groundwater, surface water, human health or the environment. In addition, OCD acceptance of a C-141 report does not relieve the operator of responsibility for compliance with any other federal, state, or local laws and/or regulations.

Printed Name: _____ Title: _____

Signature: Jacob Laird Date: _____

email: _____ Telephone: _____

OCD Only

Received by: _____ Date: _____

Incident ID	
District RP	
Facility ID	
Application ID	

Closure

The responsible party must attach information demonstrating they have complied with all applicable closure requirements and any conditions or directives of the OCD. This demonstration should be in the form of a comprehensive report (electronic submittals in .pdf format are preferred) including a scaled site map, sampling diagrams, relevant field notes, photographs of any excavation prior to backfilling, laboratory data including chain of custody documents of final sampling, and a narrative of the remedial activities. Refer to 19.15.29.12 NMAC.

Closure Report Attachment Checklist: *Each of the following items must be included in the closure report.*

- ☐ A scaled site and sampling diagram as described in 19.15.29.11 NMAC
- ☐ Photographs of the remediated site prior to backfill or photos of the liner integrity if applicable (Note: appropriate OCD District office must be notified 2 days prior to liner inspection)
- ☐ Laboratory analyses of final sampling (Note: appropriate ODC District office must be notified 2 days prior to final sampling)
- ☐ Description of remediation activities

I hereby certify that the information given above is true and complete to the best of my knowledge and understand that pursuant to OCD rules and regulations all operators are required to report and/or file certain release notifications and perform corrective actions for releases which may endanger public health or the environment. The acceptance of a C-141 report by the OCD does not relieve the operator of liability should their operations have failed to adequately investigate and remediate contamination that pose a threat to groundwater, surface water, human health or the environment. In addition, OCD acceptance of a C-141 report does not relieve the operator of responsibility for compliance with any other federal, state, or local laws and/or regulations. The responsible party acknowledges they must substantially restore, reclaim, and re-vegetate the impacted surface area to the conditions that existed prior to the release or their final land use in accordance with 19.15.29.13 NMAC including notification to the OCD when reclamation and re-vegetation are complete.

Printed Name: _____ Title: _____

Signature: Jacob Laird Date: _____

email: _____ Telephone: _____

OCD Only

Received by: _____ Date: _____

Closure approval by the OCD does not relieve the responsible party of liability should their operations have failed to adequately investigate and remediate contamination that poses a threat to groundwater, surface water, human health, or the environment nor does not relieve the responsible party of compliance with any other federal, state, or local laws and/or regulations.

Closure Approved by: _____ Date: _____

Printed Name: _____ Title: _____

APPENDIX B

Site Characterization Data

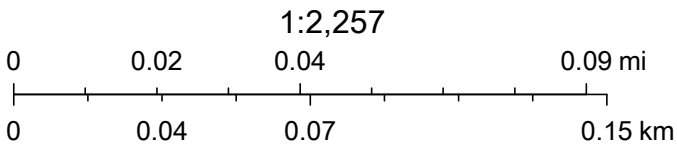
OCD Karst Potential



9/6/2023, 10:48:29 AM

Karst Occurrence Potential

Low



BLM, OCD, New Mexico Tech, Maxar, Microsoft, Esri, HERE, Garmin, iPC



New Mexico Office of the State Engineer

Water Column/Average Depth to Water

(A CLW##### in the POD suffix indicates the POD has been replaced & no longer serves a water right file.)

(R=POD has been replaced,
O=orphaned,
C=the file is closed)

(quarters are 1=NW 2=NE 3=SW 4=SE)

(quarters are smallest to largest)

(NAD83 UTM in meters)

(In feet)

POD Number	POD Sub-Code	basin	County	Q 64	Q 16	Q 4	Sec	Tws	Rng	X	Y	Distance	Depth Well	Depth Water	Water Column
C 04665	CUB	LE		1	1	2	30	24S	32E	621350	3562798	723	120		

Average Depth to Water: --

Minimum Depth: --

Maximum Depth: --

Record Count: 1

UTM NAD83 Radius Search (in meters):

Easting (X): 620631.2

Northing (Y): 3562717.58

Radius: 800

The data is furnished by the NMOSE/ISC and is accepted by the recipient with the expressed understanding that the OSE/ISC make no warranties, expressed or implied, concerning the accuracy, completeness, reliability, usability, or suitability for any particular purpose of the data.

5/18/23 7:33 AM

Page 1 of 1

WATER COLUMN/ AVERAGE
DEPTH TO WATER



New Mexico Office of the State Engineer

Water Column/Average Depth to Water

(A CLW##### in the POD suffix indicates the POD has been replaced & no longer serves a water right file.)

(R=POD has been replaced, O=orphaned, C=the file is closed)

(quarters are 1=NW 2=NE 3=SW 4=SE)

(quarters are smallest to largest)

(NAD83 UTM in meters)

(In feet)

POD Number	POD Sub-Code	basin	County	Q 64	Q 16	Q 4	Sec	Tws	Rng	X	Y	Distance	Depth Well	Depth Water	Water Column
C 04665	CUB	LE		1	1	2	30	24S	32E	621350	3562798	648	120		
C 04654 POD1	CUB	ED		3	3	4	25	24S	31E	619764	3561226	1784	55		
C 04636 POD1	CUB	ED		3	4	3	25	24S	31E	619200	3561279	2098			
C 04643 POD1	C	ED		4	2	2	05	23S	27E	619200	3561279	2098	305	135	170

Average Depth to Water: **135 feet**

Minimum Depth: **135 feet**

Maximum Depth: **135 feet**

Record Count: 4

UTMNAD83 Radius Search (in meters):

Easting (X): 620703.58

Northing (Y): 3562743.69

Radius: 3000

The data is furnished by the NMOSE/ISC and is accepted by the recipient with the expressed understanding that the OSE/ISC make no warranties, expressed or implied, concerning the accuracy, completeness, reliability, usability, or suitability for any particular purpose of the data.

9/27/23 1:15 PM

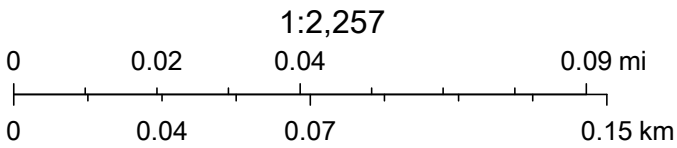
Page 1 of 1

WATER COLUMN/ AVERAGE
DEPTH TO WATER

OCD Waterbodies



9/6/2023, 10:50:48 AM



Maxar, Microsoft, Esri, HERE, Garmin, IPC, NM OSE

National Flood Hazard Layer FIRMette



103°43'29"W 32°11'56"N



Legend

SEE FIS REPORT FOR DETAILED LEGEND AND INDEX MAP FOR FIRM PANEL LAYOUT

SPECIAL FLOOD HAZARD AREAS		Without Base Flood Elevation (BFE) Zone A, V, A99
		With BFE or Depth Zone AE, AO, AH, VE, AR
		Regulatory Floodway
OTHER AREAS OF FLOOD HAZARD		0.2% Annual Chance Flood Hazard, Areas of 1% annual chance flood with average depth less than one foot or with drainage areas of less than one square mile Zone X
		Future Conditions 1% Annual Chance Flood Hazard Zone X
		Area with Reduced Flood Risk due to Levee. See Notes. Zone X
		Area with Flood Risk due to Levee Zone D
OTHER AREAS		NO SCREEN Area of Minimal Flood Hazard Zone X
		Effective LOMRs
		Area of Undetermined Flood Hazard Zone D
GENERAL STRUCTURES		Channel, Culvert, or Storm Sewer
		Levee, Dike, or Floodwall
OTHER FEATURES		20.2 Cross Sections with 1% Annual Chance Water Surface Elevation
		17.5 Cross Sections with 1% Annual Chance Water Surface Elevation
		Coastal Transect
		Base Flood Elevation Line (BFE)
		Limit of Study
		Jurisdiction Boundary
		Coastal Transect Baseline
MAP PANELS		Digital Data Available
		No Digital Data Available
		Unmapped



The pin displayed on the map is an approximate point selected by the user and does not represent an authoritative property location.

This map complies with FEMA's standards for the use of digital flood maps if it is not void as described below. The basemap shown complies with FEMA's basemap accuracy standards

The flood hazard information is derived directly from the authoritative NFHL web services provided by FEMA. This map was exported on **10/3/2023 at 12:34 PM** and does not reflect changes or amendments subsequent to this date and time. The NFHL and effective information may change or become superseded by new data over time.

This map image is void if the one or more of the following map elements do not appear: basemap imagery, flood zone labels, legend, scale bar, map creation date, community identifiers, FIRM panel number, and FIRM effective date. Map images for unmapped and unmodernized areas cannot be used for regulatory purposes.

OCD Land Ownership



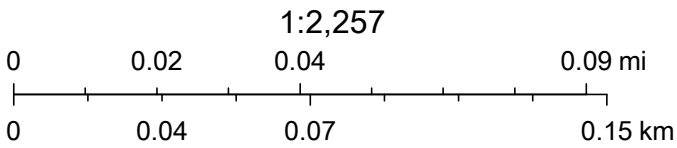
9/6/2023, 10:45:52 AM

Mineral Ownership

A-All minerals are owned by U.S.

Land Ownership

BLM



U.S. BLM, Maxar, Microsoft, Esri, HERE, Garmin, iPC

APPENDIX C

Laboratory Analytical Data



PHONE (575) 393-2326 ° 101 E. MARLAND ° HOBBS, NM 88240

October 04, 2024

LISBETH CHAVIRA

TETRA TECH

901 WEST WALL STREET , STE 100

MIDLAND, TX 79701

RE: WINDWARD FEDERAL #006H FLOWLINE RELEASE

Enclosed are the results of analyses for samples received by the laboratory on 10/03/24 16:24.

Cardinal Laboratories is accredited through Texas NELAP under certificate number TX-C24-00112. Accreditation applies to drinking water, non-potable water and solid and chemical materials. All accredited analytes are denoted by an asterisk (*). For a complete list of accredited analytes and matrices visit the TCEQ website at www.tceq.texas.gov/field/qa/lab_accred_certif.html.

Cardinal Laboratories is accredited through the State of Colorado Department of Public Health and Environment for:

Method EPA 552.2	Haloacetic Acids (HAA-5)
Method EPA 524.2	Total Trihalomethanes (TTHM)
Method EPA 524.4	Regulated VOCs (V1, V2, V3)

Accreditation applies to public drinking water matrices.

This report meets NELAP requirements and is made up of a cover page, analytical results, and a copy of the original chain-of-custody. If you have any questions concerning this report, please feel free to contact me.

Sincerely,

A handwritten signature in black ink that reads "Celey D. Keene". The signature is fluid and cursive, with the first name "Celey" and last name "Keene" clearly distinguishable.

Celey D. Keene

Lab Director/Quality Manager



PHONE (575) 393-2326 ° 101 E. MARLAND ° HOBBS, NM 88240

Analytical Results For:

TETRA TECH
 LISBETH CHAVIRA
 901 WEST WALL STREET , STE 100
 MIDLAND TX, 79701
 Fax To: (432) 682-3946

Received:	10/03/2024	Sampling Date:	10/03/2024
Reported:	10/04/2024	Sampling Type:	Soil
Project Name:	WINDWARD FEDERAL #006H FLOWLINE	Sampling Condition:	Cool & Intact
Project Number:	NONE GIVEN	Sample Received By:	Alyssa Parras
Project Location:	LEA CO NM		

Sample ID: NSW - 1 (H246039-01)

BTEx 8021B		mg/kg		Analyzed By: JH					
Analyte	Result	Reporting Limit	Analyzed	Method Blank	BS	% Recovery	True Value QC	RPD	Qualifier
Benzene*	<0.050	0.050	10/04/2024	ND	1.46	72.9	2.00	6.83	
Toluene*	<0.050	0.050	10/04/2024	ND	1.41	70.3	2.00	7.19	
Ethylbenzene*	<0.050	0.050	10/04/2024	ND	1.44	71.9	2.00	7.89	
Total Xylenes*	<0.150	0.150	10/04/2024	ND	4.28	71.3	6.00	7.24	
Total BTEX	<0.300	0.300	10/04/2024	ND					

Surrogate: 4-Bromofluorobenzene (PID) 103 % 71.5-134

Chloride, SM4500Cl-B		mg/kg		Analyzed By: HM					
Analyte	Result	Reporting Limit	Analyzed	Method Blank	BS	% Recovery	True Value QC	RPD	Qualifier
Chloride	32.0	16.0	10/04/2024	ND	448	112	400	3.64	

TPH 8015M		mg/kg		Analyzed By: ms					
Analyte	Result	Reporting Limit	Analyzed	Method Blank	BS	% Recovery	True Value QC	RPD	Qualifier
GRO C6-C10*	<10.0	10.0	10/03/2024	ND	207	104	200	2.15	
DRO >C10-C28*	<10.0	10.0	10/03/2024	ND	199	99.6	200	4.58	
EXT DRO >C28-C36	<10.0	10.0	10/03/2024	ND					

Surrogate: 1-Chlorooctane 86.5 % 48.2-134

Surrogate: 1-Chlorooctadecane 88.0 % 49.1-148

Cardinal Laboratories

*=Accredited Analyte

PLEASE NOTE: Liability and Damages. Cardinal's liability and client's exclusive remedy for any claim arising, whether based in contract or tort, shall be limited to the amount paid by client for analyses. All claims, including those for negligence and any other cause whatsoever shall be deemed waived unless made in writing and received by Cardinal within thirty (30) days after completion of the applicable service. In no event shall Cardinal be liable for incidental or consequential damages, including, without limitation, business interruptions, loss of use, or loss of profits incurred by client, its subsidiaries, affiliates or successors arising out of or related to the performance of the services hereunder by Cardinal, regardless of whether such claim is based upon any of the above stated reasons or otherwise. Results relate only to the samples identified above. This report shall not be reproduced except in full with written approval of Cardinal Laboratories.

Celey D. Keene, Lab Director/Quality Manager



PHONE (575) 393-2326 ° 101 E. MARLAND ° HOBBS, NM 88240

Analytical Results For:

TETRA TECH
 LISBETH CHAVIRA
 901 WEST WALL STREET , STE 100
 MIDLAND TX, 79701
 Fax To: (432) 682-3946

Received:	10/03/2024	Sampling Date:	10/03/2024
Reported:	10/04/2024	Sampling Type:	Soil
Project Name:	WINDWARD FEDERAL #006H FLOWLINE	Sampling Condition:	Cool & Intact
Project Number:	NONE GIVEN	Sample Received By:	Alyssa Parras
Project Location:	LEA CO NM		

Sample ID: ESW - 1 (H246039-02)

BTEx 8021B		mg/kg		Analyzed By: JH						
Analyte	Result	Reporting Limit	Analyzed	Method Blank	BS	% Recovery	True Value QC	RPD	Qualifier	
Benzene*	<0.050	0.050	10/04/2024	ND	1.46	72.9	2.00	6.83		
Toluene*	<0.050	0.050	10/04/2024	ND	1.41	70.3	2.00	7.19		
Ethylbenzene*	<0.050	0.050	10/04/2024	ND	1.44	71.9	2.00	7.89		
Total Xylenes*	<0.150	0.150	10/04/2024	ND	4.28	71.3	6.00	7.24		
Total BTEx	<0.300	0.300	10/04/2024	ND						

Surrogate: 4-Bromofluorobenzene (PID) 103 % 71.5-134

Chloride, SM4500CI-B		mg/kg		Analyzed By: HM						
Analyte	Result	Reporting Limit	Analyzed	Method Blank	BS	% Recovery	True Value QC	RPD	Qualifier	
Chloride	64.0	16.0	10/04/2024	ND	448	112	400	3.64		

TPH 8015M		mg/kg		Analyzed By: ms					
Analyte	Result	Reporting Limit	Analyzed	Method Blank	BS	% Recovery	True Value QC	RPD	Qualifier
GRO C6-C10*	<10.0	10.0	10/03/2024	ND	207	104	200	2.15	
DRO >C10-C28*	<10.0	10.0	10/03/2024	ND	199	99.6	200	4.58	
EXT DRO >C28-C36	<10.0	10.0	10/03/2024	ND					

Surrogate: 1-Chlorooctane 86.8 % 48.2-134

Surrogate: 1-Chlorooctadecane 88.0 % 49.1-148

Cardinal Laboratories

*=Accredited Analyte

PLEASE NOTE: Liability and Damages. Cardinal's liability and client's exclusive remedy for any claim arising, whether based in contract or tort, shall be limited to the amount paid by client for analyses. All claims, including those for negligence and any other cause whatsoever shall be deemed waived unless made in writing and received by Cardinal within thirty (30) days after completion of the applicable service. In no event shall Cardinal be liable for incidental or consequential damages, including, without limitation, business interruptions, loss of use, or loss of profits incurred by client, its subsidiaries, affiliates or successors arising out of or related to the performance of the services hereunder by Cardinal, regardless of whether such claim is based upon any of the above stated reasons or otherwise. Results relate only to the samples identified above. This report shall not be reproduced except in full with written approval of Cardinal Laboratories.

Celey D. Keene, Lab Director/Quality Manager



PHONE (575) 393-2326 ° 101 E. MARLAND ° HOBBS, NM 88240

Analytical Results For:

TETRA TECH
 LISBETH CHAVIRA
 901 WEST WALL STREET , STE 100
 MIDLAND TX, 79701
 Fax To: (432) 682-3946

Received:	10/03/2024	Sampling Date:	10/03/2024
Reported:	10/04/2024	Sampling Type:	Soil
Project Name:	WINDWARD FEDERAL #006H FLOWLINE	Sampling Condition:	Cool & Intact
Project Number:	NONE GIVEN	Sample Received By:	Alyssa Parras
Project Location:	LEA CO NM		

Sample ID: SSW - 1 (H246039-03)

BTEx 8021B		mg/kg		Analyzed By: JH						
Analyte	Result	Reporting Limit	Analyzed	Method Blank	BS	% Recovery	True Value QC	RPD	Qualifier	
Benzene*	<0.050	0.050	10/04/2024	ND	1.46	72.9	2.00	6.83		
Toluene*	<0.050	0.050	10/04/2024	ND	1.41	70.3	2.00	7.19		
Ethylbenzene*	<0.050	0.050	10/04/2024	ND	1.44	71.9	2.00	7.89		
Total Xylenes*	<0.150	0.150	10/04/2024	ND	4.28	71.3	6.00	7.24		
Total BTEx	<0.300	0.300	10/04/2024	ND						

Surrogate: 4-Bromofluorobenzene (PID) 104 % 71.5-134

Chloride, SM4500Cl-B		mg/kg		Analyzed By: HM						
Analyte	Result	Reporting Limit	Analyzed	Method Blank	BS	% Recovery	True Value QC	RPD	Qualifier	
Chloride	64.0	16.0	10/04/2024	ND	448	112	400	3.64		

TPH 8015M		mg/kg		Analyzed By: ms					
Analyte	Result	Reporting Limit	Analyzed	Method Blank	BS	% Recovery	True Value QC	RPD	Qualifier
GRO C6-C10*	<10.0	10.0	10/03/2024	ND	207	104	200	2.15	
DRO >C10-C28*	<10.0	10.0	10/03/2024	ND	199	99.6	200	4.58	
EXT DRO >C28-C36	<10.0	10.0	10/03/2024	ND					

Surrogate: 1-Chlorooctane 86.0 % 48.2-134

Surrogate: 1-Chlorooctadecane 87.6 % 49.1-148

Cardinal Laboratories

*=Accredited Analyte

PLEASE NOTE: Liability and Damages. Cardinal's liability and client's exclusive remedy for any claim arising, whether based in contract or tort, shall be limited to the amount paid by client for analyses. All claims, including those for negligence and any other cause whatsoever shall be deemed waived unless made in writing and received by Cardinal within thirty (30) days after completion of the applicable service. In no event shall Cardinal be liable for incidental or consequential damages, including, without limitation, business interruptions, loss of use, or loss of profits incurred by client, its subsidiaries, affiliates or successors arising out of or related to the performance of the services hereunder by Cardinal, regardless of whether such claim is based upon any of the above stated reasons or otherwise. Results relate only to the samples identified above. This report shall not be reproduced except in full with written approval of Cardinal Laboratories.

Celey D. Keene, Lab Director/Quality Manager



PHONE (575) 393-2326 ° 101 E. MARLAND ° HOBBS, NM 88240

Analytical Results For:

TETRA TECH
 LISBETH CHAVIRA
 901 WEST WALL STREET , STE 100
 MIDLAND TX, 79701
 Fax To: (432) 682-3946

Received:	10/03/2024	Sampling Date:	10/03/2024
Reported:	10/04/2024	Sampling Type:	Soil
Project Name:	WINDWARD FEDERAL #006H FLOWLINE	Sampling Condition:	Cool & Intact
Project Number:	NONE GIVEN	Sample Received By:	Alyssa Parras
Project Location:	LEA CO NM		

Sample ID: WSW - 1 (H246039-04)

BTEx 8021B		mg/kg		Analyzed By: JH						
Analyte	Result	Reporting Limit	Analyzed	Method Blank	BS	% Recovery	True Value QC	RPD	Qualifier	
Benzene*	<0.050	0.050	10/04/2024	ND	1.46	72.9	2.00	6.83		
Toluene*	<0.050	0.050	10/04/2024	ND	1.41	70.3	2.00	7.19		
Ethylbenzene*	<0.050	0.050	10/04/2024	ND	1.44	71.9	2.00	7.89		
Total Xylenes*	<0.150	0.150	10/04/2024	ND	4.28	71.3	6.00	7.24		
Total BTEx	<0.300	0.300	10/04/2024	ND						

Surrogate: 4-Bromofluorobenzene (PID) 105 % 71.5-134

Chloride, SM4500Cl-B		mg/kg		Analyzed By: HM						
Analyte	Result	Reporting Limit	Analyzed	Method Blank	BS	% Recovery	True Value QC	RPD	Qualifier	
Chloride	80.0	16.0	10/04/2024	ND	448	112	400	3.64		

TPH 8015M		mg/kg		Analyzed By: ms					
Analyte	Result	Reporting Limit	Analyzed	Method Blank	BS	% Recovery	True Value QC	RPD	Qualifier
GRO C6-C10*	<10.0	10.0	10/03/2024	ND	207	104	200	2.15	
DRO >C10-C28*	<10.0	10.0	10/03/2024	ND	199	99.6	200	4.58	
EXT DRO >C28-C36	<10.0	10.0	10/03/2024	ND					

Surrogate: 1-Chlorooctane 83.3 % 48.2-134

Surrogate: 1-Chlorooctadecane 84.5 % 49.1-148

Cardinal Laboratories

*=Accredited Analyte

PLEASE NOTE: Liability and Damages. Cardinal's liability and client's exclusive remedy for any claim arising, whether based in contract or tort, shall be limited to the amount paid by client for analyses. All claims, including those for negligence and any other cause whatsoever shall be deemed waived unless made in writing and received by Cardinal within thirty (30) days after completion of the applicable service. In no event shall Cardinal be liable for incidental or consequential damages, including, without limitation, business interruptions, loss of use, or loss of profits incurred by client, its subsidiaries, affiliates or successors arising out of or related to the performance of the services hereunder by Cardinal, regardless of whether such claim is based upon any of the above stated reasons or otherwise. Results relate only to the samples identified above. This report shall not be reproduced except in full with written approval of Cardinal Laboratories.

Celey D. Keene, Lab Director/Quality Manager



PHONE (575) 393-2326 ° 101 E. MARLAND ° HOBBS, NM 88240

Analytical Results For:

TETRA TECH
 LISBETH CHAVIRA
 901 WEST WALL STREET , STE 100
 MIDLAND TX, 79701
 Fax To: (432) 682-3946

Received:	10/03/2024	Sampling Date:	10/03/2024
Reported:	10/04/2024	Sampling Type:	Soil
Project Name:	WINDWARD FEDERAL #006H FLOWLINE	Sampling Condition:	Cool & Intact
Project Number:	NONE GIVEN	Sample Received By:	Alyssa Parras
Project Location:	LEA CO NM		

Sample ID: FS - 1 (H246039-05)

BTEx 8021B		mg/kg		Analyzed By: JH						
Analyte	Result	Reporting Limit	Analyzed	Method Blank	BS	% Recovery	True Value QC	RPD	Qualifier	
Benzene*	<0.050	0.050	10/04/2024	ND	1.46	72.9	2.00	6.83		
Toluene*	<0.050	0.050	10/04/2024	ND	1.41	70.3	2.00	7.19		
Ethylbenzene*	<0.050	0.050	10/04/2024	ND	1.44	71.9	2.00	7.89		
Total Xylenes*	<0.150	0.150	10/04/2024	ND	4.28	71.3	6.00	7.24		
Total BTEX	<0.300	0.300	10/04/2024	ND						

Surrogate: 4-Bromofluorobenzene (PID) 105 % 71.5-134

Chloride, SM4500Cl-B		mg/kg		Analyzed By: HM						
Analyte	Result	Reporting Limit	Analyzed	Method Blank	BS	% Recovery	True Value QC	RPD	Qualifier	
Chloride	2160	16.0	10/04/2024	ND	448	112	400	3.64		

TPH 8015M		mg/kg		Analyzed By: ms					
Analyte	Result	Reporting Limit	Analyzed	Method Blank	BS	% Recovery	True Value QC	RPD	Qualifier
GRO C6-C10*	<10.0	10.0	10/03/2024	ND	207	104	200	2.15	
DRO >C10-C28*	<10.0	10.0	10/03/2024	ND	199	99.6	200	4.58	
EXT DRO >C28-C36	<10.0	10.0	10/03/2024	ND					

Surrogate: 1-Chlorooctane 79.6 % 48.2-134

Surrogate: 1-Chlorooctadecane 80.4 % 49.1-148

Cardinal Laboratories

*=Accredited Analyte

PLEASE NOTE: Liability and Damages. Cardinal's liability and client's exclusive remedy for any claim arising, whether based in contract or tort, shall be limited to the amount paid by client for analyses. All claims, including those for negligence and any other cause whatsoever shall be deemed waived unless made in writing and received by Cardinal within thirty (30) days after completion of the applicable service. In no event shall Cardinal be liable for incidental or consequential damages, including, without limitation, business interruptions, loss of use, or loss of profits incurred by client, its subsidiaries, affiliates or successors arising out of or related to the performance of the services hereunder by Cardinal, regardless of whether such claim is based upon any of the above stated reasons or otherwise. Results relate only to the samples identified above. This report shall not be reproduced except in full with written approval of Cardinal Laboratories.

Celey D. Keene, Lab Director/Quality Manager



PHONE (575) 393-2326 ° 101 E. MARLAND ° HOBBS, NM 88240

Analytical Results For:

TETRA TECH
 LISBETH CHAVIRA
 901 WEST WALL STREET , STE 100
 MIDLAND TX, 79701
 Fax To: (432) 682-3946

Received:	10/03/2024	Sampling Date:	10/03/2024
Reported:	10/04/2024	Sampling Type:	Soil
Project Name:	WINDWARD FEDERAL #006H FLOWLINE	Sampling Condition:	Cool & Intact
Project Number:	NONE GIVEN	Sample Received By:	Alyssa Parras
Project Location:	LEA CO NM		

Sample ID: AH - 1 (H246039-06)

BTEx 8021B		mg/kg		Analyzed By: JH						
Analyte	Result	Reporting Limit	Analyzed	Method Blank	BS	% Recovery	True Value QC	RPD	Qualifier	
Benzene*	<0.050	0.050	10/04/2024	ND	1.46	72.9	2.00	6.83		
Toluene*	<0.050	0.050	10/04/2024	ND	1.41	70.3	2.00	7.19		
Ethylbenzene*	<0.050	0.050	10/04/2024	ND	1.44	71.9	2.00	7.89		
Total Xylenes*	<0.150	0.150	10/04/2024	ND	4.28	71.3	6.00	7.24		
Total BTEX	<0.300	0.300	10/04/2024	ND						

Surrogate: 4-Bromofluorobenzene (PID) 104 % 71.5-134

Chloride, SM4500Cl-B		mg/kg		Analyzed By: HM						
Analyte	Result	Reporting Limit	Analyzed	Method Blank	BS	% Recovery	True Value QC	RPD	Qualifier	
Chloride	400	16.0	10/04/2024	ND	448	112	400	3.64		

TPH 8015M		mg/kg		Analyzed By: ms					
Analyte	Result	Reporting Limit	Analyzed	Method Blank	BS	% Recovery	True Value QC	RPD	Qualifier
GRO C6-C10*	<10.0	10.0	10/03/2024	ND	207	104	200	2.15	
DRO >C10-C28*	<10.0	10.0	10/03/2024	ND	199	99.6	200	4.58	
EXT DRO >C28-C36	<10.0	10.0	10/03/2024	ND					

Surrogate: 1-Chlorooctane 76.0 % 48.2-134

Surrogate: 1-Chlorooctadecane 77.1 % 49.1-148

Cardinal Laboratories

*=Accredited Analyte

PLEASE NOTE: Liability and Damages. Cardinal's liability and client's exclusive remedy for any claim arising, whether based in contract or tort, shall be limited to the amount paid by client for analyses. All claims, including those for negligence and any other cause whatsoever shall be deemed waived unless made in writing and received by Cardinal within thirty (30) days after completion of the applicable service. In no event shall Cardinal be liable for incidental or consequential damages, including, without limitation, business interruptions, loss of use, or loss of profits incurred by client, its subsidiaries, affiliates or successors arising out of or related to the performance of the services hereunder by Cardinal, regardless of whether such claim is based upon any of the above stated reasons or otherwise. Results relate only to the samples identified above. This report shall not be reproduced except in full with written approval of Cardinal Laboratories.

Celey D. Keene, Lab Director/Quality Manager

PHONE (575) 393-2326 ° 101 E. MARLAND ° HOBBS, NM 88240

Notes and Definitions

BS-3	Blank spike recovery outside of lab established statistical limits, but still within method limits. Data is not adversely affected.
ND	Analyte NOT DETECTED at or above the reporting limit
RPD	Relative Percent Difference
**	Samples not received at proper temperature of 6°C or below.
***	Insufficient time to reach temperature.
-	Chloride by SM4500Cl-B does not require samples be received at or below 6°C Samples reported on an as received basis (wet) unless otherwise noted on report

Cardinal Laboratories

*=Accredited Analyte

PLEASE NOTE: Liability and Damages. Cardinal's liability and client's exclusive remedy for any claim arising, whether based in contract or tort, shall be limited to the amount paid by client for analyses. All claims, including those for negligence and any other cause whatsoever shall be deemed waived unless made in writing and received by Cardinal within thirty (30) days after completion of the applicable service. In no event shall Cardinal be liable for incidental or consequential damages, including, without limitation, business interruptions, loss of use, or loss of profits incurred by client, its subsidiaries, affiliates or successors arising out of or related to the performance of the services hereunder by Cardinal, regardless of whether such claim is based upon any of the above stated reasons or otherwise. Results relate only to the samples identified above. This report shall not be reproduced except in full with written approval of Cardinal Laboratories.

A handwritten signature in black ink, appearing to read "Celey D. Keene".

Celey D. Keene, Lab Director/Quality Manager

101 East Marland, Hobbs, NM 88240
(575) 393-2326 FAX (575) 393-2476

CHAIN-OF-CUSTODY AND ANALYSIS REQUEST

Company Name: Tetra Tech - Lonzo Phillips Lisbeth Charina				BILL TO		ANALYSIS REQUEST																					
Project Manager:				P.O. #:																							
Address:				Company: Tetra Tech																							
City:		State:		Attn: Lisbeth Charina																							
Phone #:		Fax #:		Address:																							
Project #:		Project Owner:		City:																							
Project Name: Windward Federal #006H Flowline Release				State:		Zip:																					
Project Location: Lea Co NM				Phone #:																							
Sampler Name: Andrew Garcia				Fax #:																							
FOR LAB USE ONLY				MATRIX		PRESERV.	SAMPLING																				
Lab I.D.	Sample I.D.	(G)RAB OR (C)OMP.	# CONTAINERS	GROUNDWATER	WASTEWATER	SOIL	OIL	SLUDGE	OTHER :	ACID/BASE: ICE / COOL	DATE	TIME	TPH	BTEX	Chloride												
H240039	NSW-1	C	I			X				X	10/03	0900	X	X	X												
1	ESW-1											0915															
2	SSW-1											0930															
3	WSW-1											0945															
4	FS-1											1000															
5	AS FS-2 AH-1											1015															
6																											
PLEASE NOTE: Liability and Damages. Cardinal's liability and client's exclusive remedy for any claim arising whether based in contract or tort, shall be limited to the amount paid by the client for the analyses. All claims including those for negligence and any other cause whatsoever shall be deemed waived unless made in writing and received by Cardinal within 30 days after completion of the applicable service. In no event shall Cardinal be liable for incidental or consequential damages, including without limitation, business interruptions, loss of use, or loss of profits incurred by client, its subsidiaries, affiliates or successors arising out of or related to the performance of services hereunder by Cardinal, regardless of whether such claim is based upon any of the above stated reasons or otherwise.																											
Relinquished By: Andrew Garcia				Date: 10/23/24		Received By: [Signature]				Verbal Result: <input type="checkbox"/> Yes <input checked="" type="checkbox"/> No		Add'l Phone #:															
Relinquished By:				Time: 1024		Received By:				All Results are emailed. Please provide Email address:		Lisbeth.Chavira@TetraTech.com															
Delivered By: (Circle One)				Date:		REMARKS:				Nicholas.Poole@TetraTech.com																	
Time:				Observed Temp. °C: 4.12		Sample Condition: Cool Intact				CHECKED BY: (Initials) AD		Turnaround Time: Standard <input type="checkbox"/> Rush <input checked="" type="checkbox"/>		Bacteria (only) Sample Condition													
Corrected Temp. °C: 3.54				Cool <input checked="" type="checkbox"/> Intact <input checked="" type="checkbox"/>		Yes <input checked="" type="checkbox"/> No <input type="checkbox"/>						Thermometer ID #140		Cool Intact Observed Temp. °C													
FORM-006 R 3.3 08/03/24												Correction Factor -0.6°C		Yes <input type="checkbox"/> No <input type="checkbox"/> Corrected Temp. °C													



PHONE (575) 393-2326 ° 101 E. MARLAND ° HOBBS, NM 88240

October 04, 2024

NICHOLAS POOLE

TETRA TECH

901 WEST WALL STREET , STE 100

MIDLAND, TX 79701

RE: KING TUT FEDERAL #1 CTB/PASTURE FLOWLINE RELEASE

Enclosed are the results of analyses for samples received by the laboratory on 10/03/24 16:24.

Cardinal Laboratories is accredited through Texas NELAP under certificate number TX-C24-00112. Accreditation applies to drinking water, non-potable water and solid and chemical materials. All accredited analytes are denoted by an asterisk (*). For a complete list of accredited analytes and matrices visit the TCEQ website at www.tceq.texas.gov/field/qa/lab_accred_certif.html.

Cardinal Laboratories is accredited through the State of Colorado Department of Public Health and Environment for:

Method EPA 552.2	Haloacetic Acids (HAA-5)
Method EPA 524.2	Total Trihalomethanes (TTHM)
Method EPA 524.4	Regulated VOCs (V1, V2, V3)

Accreditation applies to public drinking water matrices.

This report meets NELAP requirements and is made up of a cover page, analytical results, and a copy of the original chain-of-custody. If you have any questions concerning this report, please feel free to contact me.

Sincerely,

A handwritten signature in black ink that reads "Celey D. Keene". The signature is written in a cursive, flowing style.

Celey D. Keene

Lab Director/Quality Manager



PHONE (575) 393-2326 ° 101 E. MARLAND ° HOBBS, NM 88240

Analytical Results For:

TETRA TECH
 NICHOLAS POOLE
 901 WEST WALL STREET , STE 100
 MIDLAND TX, 79701
 Fax To: (432) 682-3946

Received:	10/03/2024	Sampling Date:	10/03/2024
Reported:	10/04/2024	Sampling Type:	Soil
Project Name:	KING TUT FEDERAL #1 CTB/PASTURE FI	Sampling Condition:	Cool & Intact
Project Number:	212C-MD-03225	Sample Received By:	Alyssa Parras
Project Location:	LEA COUNTY, NEW MEXICO		

Sample ID: FS - 2 (H246040-01)

BTEx 8021B		mg/kg		Analyzed By: JH						
Analyte	Result	Reporting Limit	Analyzed	Method Blank	BS	% Recovery	True Value QC	RPD	Qualifier	
Benzene*	<0.050	0.050	10/04/2024	ND	1.46	72.9	2.00	6.83		
Toluene*	<0.050	0.050	10/04/2024	ND	1.41	70.3	2.00	7.19		
Ethylbenzene*	<0.050	0.050	10/04/2024	ND	1.44	71.9	2.00	7.89		
Total Xylenes*	<0.150	0.150	10/04/2024	ND	4.28	71.3	6.00	7.24		
Total BTEx	<0.300	0.300	10/04/2024	ND						

Surrogate: 4-Bromofluorobenzene (PID) 103 % 71.5-134

Chloride, SM4500Cl-B		mg/kg		Analyzed By: HM						
Analyte	Result	Reporting Limit	Analyzed	Method Blank	BS	% Recovery	True Value QC	RPD	Qualifier	
Chloride	784	16.0	10/04/2024	ND	448	112	400	3.64		

TPH 8015M		mg/kg		Analyzed By: ms					
Analyte	Result	Reporting Limit	Analyzed	Method Blank	BS	% Recovery	True Value QC	RPD	Qualifier
GRO C6-C10*	<10.0	10.0	10/03/2024	ND	207	104	200	2.15	
DRO >C10-C28*	<10.0	10.0	10/03/2024	ND	199	99.6	200	4.58	
EXT DRO >C28-C36	<10.0	10.0	10/03/2024	ND					

Surrogate: 1-Chlorooctane 84.1 % 48.2-134

Surrogate: 1-Chlorooctadecane 86.1 % 49.1-148

Cardinal Laboratories

*=Accredited Analyte

PLEASE NOTE: Liability and Damages. Cardinal's liability and client's exclusive remedy for any claim arising, whether based in contract or tort, shall be limited to the amount paid by client for analyses. All claims, including those for negligence and any other cause whatsoever shall be deemed waived unless made in writing and received by Cardinal within thirty (30) days after completion of the applicable service. In no event shall Cardinal be liable for incidental or consequential damages, including, without limitation, business interruptions, loss of use, or loss of profits incurred by client, its subsidiaries, affiliates or successors arising out of or related to the performance of the services hereunder by Cardinal, regardless of whether such claim is based upon any of the above stated reasons or otherwise. Results relate only to the samples identified above. This report shall not be reproduced except in full with written approval of Cardinal Laboratories.

Celey D. Keene, Lab Director/Quality Manager



PHONE (575) 393-2326 ° 101 E. MARLAND ° HOBBS, NM 88240

Notes and Definitions

BS-3	Blank spike recovery outside of lab established statistical limits, but still within method limits. Data is not adversely affected.
ND	Analyte NOT DETECTED at or above the reporting limit
RPD	Relative Percent Difference
**	Samples not received at proper temperature of 6°C or below.
***	Insufficient time to reach temperature.
-	Chloride by SM4500Cl-B does not require samples be received at or below 6°C Samples reported on an as received basis (wet) unless otherwise noted on report

Cardinal Laboratories

*=Accredited Analyte

PLEASE NOTE: Liability and Damages. Cardinal's liability and client's exclusive remedy for any claim arising, whether based in contract or tort, shall be limited to the amount paid by client for analyses. All claims, including those for negligence and any other cause whatsoever shall be deemed waived unless made in writing and received by Cardinal within thirty (30) days after completion of the applicable service. In no event shall Cardinal be liable for incidental or consequential damages, including, without limitation, business interruptions, loss of use, or loss of profits incurred by client, its subsidiaries, affiliates or successors arising out of or related to the performance of the services hereunder by Cardinal, regardless of whether such claim is based upon any of the above stated reasons or otherwise. Results relate only to the samples identified above. This report shall not be reproduced except in full with written approval of Cardinal Laboratories.

A handwritten signature in black ink, appearing to read "Celey D. Keene".

Celey D. Keene, Lab Director/Quality Manager



101 East Marland, Hobbs, NM 88240
(575) 393-2326 FAX (575) 393-2476

CHAIN-OF-CUSTODY AND ANALYSIS REQUEST

Company Name: <u>Tetra Tech - Canoco Phillips</u>				BILL TO				ANALYSIS REQUEST											
Project Manager: <u>Nicholas Poole</u>				P.O. #:				<div style="display: flex; justify-content: space-around; align-items: center;"> <div style="writing-mode: vertical-rl; transform: rotate(180deg);">TPH</div> <div style="writing-mode: vertical-rl; transform: rotate(180deg);">BTEX</div> <div style="writing-mode: vertical-rl; transform: rotate(180deg);">Chlorides</div> </div>											
Address:				Company: <u>TetraTech</u>															
City: State: Zip:				Attn: <u>Nicholas Poole</u>															
Phone #: Fax #:				Address:															
Project #: <u>212C-MD-03225</u> Project Owner:				City:															
Project Name: <u>King Tut Federal #1 (CTB)</u>				State: Zip:															
Project Location: <u>Lea Co, NM</u>				Phone #:															
Sampler Name: <u>Andrew Garcia</u>				Fax #:															
FOR LAB USE ONLY																			
Lab I.D.		Sample I.D.		(G)RAB OR (C)OMP.		# CONTAINERS		MATRIX		PRESERV.		SAMPLING							
<u>1540040</u>		<u>FS-2</u>		<u>C</u>		<u>1</u>		GROUNDWATER WASTEWATER SOIL OIL SLUDGE OTHER:		ACID/BASE: ICE / COOL OTHER:		<u>2024</u> DATE <u>10/03</u>		TIME <u>1200</u>					
								X X X		X X X		X X X							

PLEASE NOTE: Liability and Damages. Cardinal's liability and client's exclusive remedy for any claim arising whether based in contract or tort, shall be limited to the amount paid by the client for the analyses. All claims including those for negligence and any other cause whatsoever shall be deemed waived unless made in writing and received by Cardinal within 30 days after completion of the applicable service. In no event shall Cardinal be liable for incidental or consequential damages, including without limitation, business interruptions, loss of use, or loss of profits incurred by client, its subsidiaries, affiliates or successors arising out of or related to the performance of services hereunder by Cardinal, regardless of whether such claim is based upon any of the above stated reasons or otherwise.

Relinquished By: <u>Andrew Garcia</u>		Date: <u>10/03/24</u>		Received By: <u>APSAWES</u>		Verbal Result: <input type="checkbox"/> Yes <input type="checkbox"/> No Add'l Phone #:	
Relinquished By:		Date: <u>10/04</u>		Received By:		All Results are emailed. Please provide Email address: <u>Nicholas.Poole@TetraTech.com</u>	
Delivered By: (Circle One)		Observed Temp. °C <u>4.1C</u>		Sample Condition Cool Intact <input checked="" type="checkbox"/> Yes <input type="checkbox"/> No		REMARKS: <u>Uketh. Chavira@TetraTech.com</u>	
Sampler - UPS - Bus - Other:		Corrected Temp. °C <u>35C</u>		CHECKED BY: (Initials) <u>AP</u>		Turnaround Time: Standard <input type="checkbox"/> Rush <input checked="" type="checkbox"/>	
FORM-006 R 3.5 08/03/24						Thermometer ID #140 Correction Factor -0.6°C <u>24 HRTAT</u>	
						Bacteria (only) Sample Condition Cool Intact Observed Temp. °C <input type="checkbox"/> Yes <input type="checkbox"/> No <input type="checkbox"/> Yes <input type="checkbox"/> No Corrected Temp. °C	

† Cardinal cannot accept verbal changes. Please email changes to celey.keene@cardinallabsnm.com



PHONE (575) 393-2326 ° 101 E. MARLAND ° HOBBS, NM 88240

March 27, 2024

SAM ABBOTT

TETRA TECH

901 WEST WALL STREET , STE 100

MIDLAND, TX 79701

RE: TWIN WELLS BUCKTHORN PIT (BACKFILL SOURCE)

Enclosed are the results of analyses for samples received by the laboratory on 03/26/24 15:15.

Cardinal Laboratories is accredited through Texas NELAP under certificate number T104704398-23-16. Accreditation applies to drinking water, non-potable water and solid and chemical materials. All accredited analytes are denoted by an asterisk (*). For a complete list of accredited analytes and matrices visit the TCEQ website at www.tceq.texas.gov/field/qa/lab_accred_certif.html.

Cardinal Laboratories is accredited through the State of Colorado Department of Public Health and Environment for:

Method EPA 552.2	Haloacetic Acids (HAA-5)
Method EPA 524.2	Total Trihalomethanes (TTHM)
Method EPA 524.4	Regulated VOCs (V1, V2, V3)

Accreditation applies to public drinking water matrices.

This report meets NELAP requirements and is made up of a cover page, analytical results, and a copy of the original chain-of-custody. If you have any questions concerning this report, please feel free to contact me.

Sincerely,

A handwritten signature in black ink that reads "Celey D. Keene". The signature is written in a cursive style with a large, stylized 'C' and 'K'.

Celey D. Keene

Lab Director/Quality Manager



PHONE (575) 393-2326 ° 101 E. MARLAND ° HOBBS, NM 88240

Analytical Results For:

TETRA TECH
 SAM ABBOTT
 901 WEST WALL STREET , STE 100
 MIDLAND TX, 79701
 Fax To: (432) 682-3946

Received:	03/26/2024	Sampling Date:	03/26/2024
Reported:	03/27/2024	Sampling Type:	Soil
Project Name:	TWIN WELLS BUCKTHORN PIT (BACKFI	Sampling Condition:	Cool & Intact
Project Number:	212C - MD - 02999A	Sample Received By:	Tamara Oldaker
Project Location:	COP- LEA CO NM		

Sample ID: BACKFILL - COMPOSITE (H241559-01)

BTEX 8021B		mg/kg		Analyzed By: JH					
Analyte	Result	Reporting Limit	Analyzed	Method Blank	BS	% Recovery	True Value QC	RPD	Qualifier
Benzene*	<0.050	0.050	03/26/2024	ND	2.24	112	2.00	0.883	
Toluene*	<0.050	0.050	03/26/2024	ND	2.19	109	2.00	0.961	
Ethylbenzene*	<0.050	0.050	03/26/2024	ND	2.14	107	2.00	1.01	
Total Xylenes*	<0.150	0.150	03/26/2024	ND	6.23	104	6.00	1.07	
Total BTEX	<0.300	0.300	03/26/2024	ND					

Surrogate: 4-Bromofluorobenzene (PID) 93.9 % 71.5-134

Chloride, SM4500Cl-B		mg/kg		Analyzed By: CT					
Analyte	Result	Reporting Limit	Analyzed	Method Blank	BS	% Recovery	True Value QC	RPD	Qualifier
Chloride	16.0	16.0	03/27/2024	ND	432	108	400	3.77	

TPH 8015M		mg/kg		Analyzed By: MS					
Analyte	Result	Reporting Limit	Analyzed	Method Blank	BS	% Recovery	True Value QC	RPD	Qualifier
GRO C6-C10*	<10.0	10.0	03/26/2024	ND	226	113	200	0.713	
DRO >C10-C28*	<10.0	10.0	03/26/2024	ND	220	110	200	1.62	
EXT DRO >C28-C36	<10.0	10.0	03/26/2024	ND					

Surrogate: 1-Chlorooctane 103 % 48.2-134

Surrogate: 1-Chlorooctadecane 114 % 49.1-148

Cardinal Laboratories

*=Accredited Analyte

PLEASE NOTE: Liability and Damages. Cardinal's liability and client's exclusive remedy for any claim arising, whether based in contract or tort, shall be limited to the amount paid by client for analyses. All claims, including those for negligence and any other cause whatsoever shall be deemed waived unless made in writing and received by Cardinal within thirty (30) days after completion of the applicable service. In no event shall Cardinal be liable for incidental or consequential damages, including, without limitation, business interruptions, loss of use, or loss of profits incurred by client, its subsidiaries, affiliates or successors arising out of or related to the performance of the services hereunder by Cardinal, regardless of whether such claim is based upon any of the above stated reasons or otherwise. Results relate only to the samples identified above. This report shall not be reproduced except in full with written approval of Cardinal Laboratories.

Celey D. Keene, Lab Director/Quality Manager

PHONE (575) 393-2326 ° 101 E. MARLAND ° HOBBS, NM 88240

Notes and Definitions

QM-07	The spike recovery was outside acceptance limits for the MS and/or MSD. The batch was accepted based on acceptable LCS recovery.
ND	Analyte NOT DETECTED at or above the reporting limit
RPD	Relative Percent Difference
**	Samples not received at proper temperature of 6°C or below.
***	Insufficient time to reach temperature.
-	Chloride by SM4500Cl-B does not require samples be received at or below 6°C Samples reported on an as received basis (wet) unless otherwise noted on report

Cardinal Laboratories

*=Accredited Analyte

PLEASE NOTE: Liability and Damages. Cardinal's liability and client's exclusive remedy for any claim arising, whether based in contract or tort, shall be limited to the amount paid by client for analyses. All claims, including those for negligence and any other cause whatsoever shall be deemed waived unless made in writing and received by Cardinal within thirty (30) days after completion of the applicable service. In no event shall Cardinal be liable for incidental or consequential damages, including, without limitation, business interruptions, loss of use, or loss of profits incurred by client, its subsidiaries, affiliates or successors arising out of or related to the performance of the services hereunder by Cardinal, regardless of whether such claim is based upon any of the above stated reasons or otherwise. Results relate only to the samples identified above. This report shall not be reproduced except in full with written approval of Cardinal Laboratories.

A handwritten signature in black ink, appearing to read "Celey D. Keene".

Celey D. Keene, Lab Director/Quality Manager

[illegible]

PLEASE NOTE: Liability and Damages. Cardinal's liability and client's exclusive remedy for any claim arising whether based in contract or tort, shall be limited to the amount paid by the client for the analyses. All claims event shall Cardinal be liable for incidental or consequential damages, including without limitation, business interruptions, loss of use, or loss of profits incurred by client, its subsidiaries, affiliates or successors arising out of or related to the performance of services hereunder by Cardinal, regardless of whether such claim is based upon any of the above stated reasons or otherwise.

Relinquished By: Colton Bickerstaff		Date: 03/26/24	Received By: <i>[Signature]</i>		Verbal Result: <input type="checkbox"/> Yes <input type="checkbox"/> No Add'l Phone #:	
Relinquished By:		Time: 1515	Received By:		All Results are emailed. Please provide Email address: Sam.Abbott@tetratech.com AND Christian.Llull@tetratech.com	
Delivered By: (Circle One) Sampler - UPS - 5us - Other:		Date:	Received By:		REMARKS: Backfill sample collected at Twin Wells Ranch Buckthorn pit (32.1521970, -103.7734031) for use at King Tut(s) & Windward Federal Releases.	
		Time:	CHECKED BY: (Initials) <i>[Signature]</i>		Turnaround Time: Standard <input type="checkbox"/> Bacteria (only) Sample Condition	
		Observed Temp. °C Corrected Temp. °C 4.8i	Sample Condition Cool Intact <input checked="" type="checkbox"/> Yes <input type="checkbox"/> No <input type="checkbox"/> No <input type="checkbox"/> No		Rush: YES, 24hr. TAT <input checked="" type="checkbox"/> Cool Intact Observed Temp. °C	
					Thermometer ID #113 H/40 Correction Factor -0.5°C 40.3/26/24 <input type="checkbox"/> Yes <input type="checkbox"/> Yes <input type="checkbox"/> No <input type="checkbox"/> No Corrected Temp. °C	

FORM-006 R 3.2 10/07/21

† Cardinal cannot accept verbal changes. Please email changes to celey.keene@cardinallabsnm.com

APPENDIX D

Regulatory Correspondence

Chavira, Lisbeth

From: OCDOnline@state.nm.us
Sent: Tuesday, October 1, 2024 10:48 AM
To: Llull, Christian
Subject: The Oil Conservation Division (OCD) has accepted the application, Application ID: 388676

⚠ CAUTION: This email originated from an external sender. Verify the source before opening links or attachments. **⚠**

To whom it may concern (c/o Christian Llull for COG PRODUCTION, LLC),

The OCD has received the submitted *Notification for (Final) Sampling of a Release (C-141N)*, for incident ID (n#) nAPP2425330502.

The sampling event is expected to take place:

When: 10/03/2024 @ 11:00

Where: D-30-24S-32E 0 FNL 0 FEL (32.1951,-103.7194)

Additional Information: Sampling at the Release Incident Site will be conducted on 10/3 and 10/4. This C-141N request is intended to provide a range of dates for which confirmation sampling will be conducted.

Additional Instructions: Please contact Nicholas Poole, GIT | Project Manager Mobile +1 (512) 560-9064

An OCD representative may be available onsite at the date and time reported. In the absence or presence of an OCD representative, sampling pursuant to 19.15.29.12.D NMAC is required. Sampling must be performed following an approved sampling plan or pursuant to 19.15.29.12.D.(1).(c) NMAC. Should there be a change in the scheduled date and time of the sampling event, then another notification should be resubmitted through OCD permitting as soon as possible.

- **Failure to notify the OCD of sampling events including any changes in date/time per the requirements of 19.15.29.12.D.(1).(a) NMAC, may result in the remediation closure samples not being accepted.**

If you have any questions regarding this application, or don't know why you have received this email, please contact us.

New Mexico Energy, Minerals and Natural Resources Department

1220 South St. Francis Drive
Santa Fe, NM 87505

APPENDIX E

Waste Manifests



Customer Copy



Northern Delaware Basin Landfill
2029 West NM Hwy 128
Jal NM 88252

-----WASTE TICKET-----

Ticket # 273629

Start: 09/27/2024 09:15 AM

End: 09/27/2024 09:22 AM

By: DWL, Ivan

GROSS	TARE	NET	PRICE	AMOUNT
Contaminated Soil				
13	0	13	\$0.01	\$0.13
Hauler: McNabb Partners				
Driver: Victoria Herdia				
Lease: King Tut Fed				
Well: 001				
AFE #: N/A				
County, State: LEA (NM)				
API #: 3002541542				
Client Company Man: Ika Tavarez				
Rig Name & Number: N/A				
Trucking Co Ticket #: N/A				
Truck Type: Dump Truck				
UOM: CuYd				
UOM Count: 14				
PF Test Result: Pass				
H2S Test: Pass				
H2S Testing - PASS				
1	0	1	\$0.00	\$0.00
Paint Filter - PASS				
1	0	1	\$0.00	\$0.00
NORM - PASS				
1	0	1	\$0.00	\$0.00
Additional Photos				
1	0	1	\$0.00	\$0.00
17	0.0 lbs		\$0.01	\$0.13
SUBTOTAL --->				\$0.13
TAX --->				\$0.01
ROUNDING --->				\$0.00
TOTAL --->				\$0.14

Date	Type	Amount
	CASH	\$0.14

Customer: ConocoPhillips Company
Driver: Karen Work

UH



Customer Copy



Northern Delaware Basin Landfill
2029 West NM Hwy 128
Jal NM 88252

----WASTE TICKET----

Ticket # 273632

Start: 09/27/2024 09:38 AM

End: 09/27/2024 09:42 AM

By: owl.jayden

GROSS	TARE	NET	PRICE	AMOUNT
Contaminated Soil				
18	0	18	\$0.01	\$0.18
Hauler: McNabb Driver: Jesus Fernandez Lease: King Tut Fed Well: 001 AFE #: N/A County, State: LEA (NM) API #: 3002541542 Client Company Man: Ika Tavarez Rig Name & Number: N/A Trucking Co Ticket #: N/A Truck Type: End Dump UDM: CuYd UDM Count: 18 PF Test Result: Pass H2S Test: Pass				
H2S Testing - PASS				
1	0	1	\$0.00	\$0.00
Paint Filter - PASS				
1	0	1	\$0.00	\$0.00
NORM - PASS				
1	0	1	\$0.00	\$0.00
Additional Photos				
1	0	1	\$0.00	\$0.00
22	0.0 lbs		\$0.01	\$0.18
SUBTOTAL --->				\$0.18
TAX --->				\$0.01
ROUNDING --->				\$0.00
TOTAL --->				\$0.19

Date	Type	Amount
	CASH	\$0.19

Customer: ConocoPhillips Company
Driver: Karen Work



Customer Copy



Northern Delaware Basin Landfill
2029 West NM Hwy 128
Jal NM 88252

---WASTE TICKET---

Ticket # 273631
Start: 09/27/2024 09:32 AM
End: 09/27/2024 09:38 AM
By: owl.amy

GROSS	TARE	NET	PRICE	AMOUNT
Contaminated Soil				
13	0	13	\$0.01	\$0.13
Hauler: McNabb Partners Driver: Victor Manzano Lease: King Tut Federal Well: 001H AFE #: N/A County, State: LEA (NM) API #: 3002541542 Manifest #: 10 Client Company Man: Ike Tavarez Rig Name & Number: N/A Trucking Co Ticket #: N/A Truck Type: Dump Truck UOM: CuYd UOM Count: 13 PF Test Result: Pass H2S Test: Pass				
H2S Testing - PASS				
1	0	1	\$0.00	\$0.00
Paint Filter - PASS				
1	0	1	\$0.00	\$0.00
NORM - PASS				
1	0	1	\$0.00	\$0.00
Additional Photos				
1	0	1	\$0.00	\$0.00
17	0.0 lbs		\$0.01	\$0.13
SUBTOTAL ---->				\$0.13
TAX ---->				\$0.01
ROUNDING ---->				\$0.00
TOTAL ---->				\$0.14

Date	Type	Amount
	CASH	\$0.14

Customer: ConocoPhillips Company
Driver: Karen Work



Customer Copy



Northern Delaware Basin Landfill
2029 West NM Hwy 128
Jal NM 88252

---WASTE TICKET---

Ticket # 273635

Start:09/27/2024 09:51 AM

End:09/27/2024 09:57 AM

By:owl.amy

GROSS	TARE	NET	PRICE	AMOUNT
Contaminated Soil				
13	0	13	\$0.01	\$0.13
Hauler: McNabb Partners				
Driver: Joel Von B				
Lease: King Tut Federal				
Well: 001H				
AFE #: N/A				
County, State: LEA (NM)				
API #: 3002541542				
Manifest #: 11				
Client Company Man: Ike Tavarez				
Rig Name & Number: N/A				
Trucking Co Ticket #: N/A				
Truck Type: Dump Truck				
UDM: CuYd				
UDM Count: 13				
PF Test Result: Pass				
H2S Test: Pass				
H2S Testing - PASS				
1	0	1	\$0.00	\$0.00
Paint Filter - PASS				
1	0	1	\$0.00	\$0.00
NORM - PASS				
1	0	1	\$0.00	\$0.00
Additional Photos				
1	0	1	\$0.00	\$0.00
17	0.0 lbs		\$0.01	\$0.13
SUBTOTAL ---->				\$0.13
TAX ---->				\$0.01
ROUNDING ---->				\$0.00
TOTAL ---->				\$0.14

Date	Type	Amount
	CASH	\$0.14

Customer: ConocoPhillips Company
Driver: Karen Work



Customer Copy



Northern Delaware Basin Landfill
2029 West NM Hwy 128
Jal NM 88252

---WASTE TICKET---

Ticket # 273643

Start: 09/27/2024 10:32 AM

End: 09/27/2024 10:37 AM

By: owl.jayden

GROSS	TARE	NET	PRICE	AMOUNT
Contaminated Soil				
20	0	20	\$0.01	\$0.20
Hauler: McNabb				
Driver: Victoria Herdia				
Lease: King Tut Fed				
Well: 001				
AFE #: N/A				
County, State: LEA (NM)				
API #: 3002541542				
Client Company Man: Ika Tavaréz				
Rig Name & Number: N/A				
Trucking Co Ticket #: N/A				
Truck Type: Dump Truck				
UOM: CuYd				
UOM Count: 13				
PF Test Result: Pass				
H2S Test: Pass				
H2S Testing - PASS				
1	0	1	\$0.00	\$0.00
Paint Filter - PASS				
1	0	1	\$0.00	\$0.00
NORM - PASS				
1	0	1	\$0.00	\$0.00
Additional Photos				
1	0	1	\$0.00	\$0.00
24	0.0 lbs		\$0.01	\$0.20 ¹³

SUBTOTAL ---> \$0.20
TAX ---> \$0.01
ROUNDING ---> \$-0.00
TOTAL ---> \$0.21

Date	Type	Amount
	CASH	\$0.21

Customer: ConocoPhillips Company
Driver: Karen Work

VH



Customer Copy



Northern Delaware Basin Landfill
2029 West NM Hwy 128
Jal NM 88252

----WASTE TICKET----

Ticket # 273645
Start: 09/27/2024 10:37 AM
End: 09/27/2024 10:41 AM
By: owl.jayden

GROSS	TARE	NET	PRICE	AMOUNT
Contaminated Soil				
13	0	13	\$0.01	\$0.13
Hauler: McNabb				
Driver: Victor Manzano				
Lease: King Tut Fed				
Well: 001				
AFE #: N/A				
County, State: LEA (NM)				
API #: 3002541542				
Client Company Man: Ika Tavarez				
Rig Name & Number: N/A				
Trucking Co Ticket #: N/A				
Truck Type: Dump Truck				
UDM: CuYd				
UDM Count: 13				
PF Test Result: Pass				
H2S Test: Pass				
H2S Testing - PASS				
1	0	1	\$0.00	\$0.00
Paint Filter - PASS				
1	0	1	\$0.00	\$0.00
NORM - PASS				
1	0	1	\$0.00	\$0.00
Additional Photos				
1	0	1	\$0.00	\$0.00
17	0.0 lbs		\$0.01	\$0.13
SUBTOTAL ---->				\$0.13
TAX ---->				\$0.01
ROUNDING ---->				\$0.00
TOTAL ---->				\$0.14

Date	Type	Amount
	CASH	\$0.14

Customer: ConocoPhillips Company
Driver: Karen Work



Customer Copy



Northern Delaware Basin Landfill
2029 West NM Hwy 128
Jal NM 88252

----WASTE TICKET----

Ticket # 273654

Start: 09/27/2024 11:00 AM

End: 09/27/2024 11:02 AM

By: OWL.Ivan

GROSS	TARE	NET	PRICE	AMOUNT
Contaminated Soil				
18	0	18	\$0.01	\$0.18
Hauler: McNabb Partners				
Driver: Jesus Fernandez				
Lease: King Tut Fed				
Well: 001				
AFE #: N/A				
County, State: LEA (NM)				
API #: 3002541542				
Client Company Man: Ike Tavaréz				
Rig Name & Number: N/A				
Trucking Co Ticket #: N/A				
Truck Type: End Dump				
UOM: CuYd				
UOM Count: 18				
PF Test Result: Pass				
H2S Test: Pass				
H2S Testing - PASS				
1	0	1	\$0.00	\$0.00
Paint Filter - PASS				
1	0	1	\$0.00	\$0.00
NORM - PASS				
1	0	1	\$0.00	\$0.00
Additional Photos				
1	0	1	\$0.00	\$0.00
22		0.0 lbs	\$0.01	\$0.18
SUBTOTAL --->				\$0.18
TAX --->				\$0.01
ROUNDING --->				\$0.00
TOTAL --->				\$0.19

Date	Type	Amount
09/27/2024	CASH	\$0.19

Customer: ConocoPhillips Company
Driver: Karen Work



Customer Copy

WEIGHT TICKET

Ticket # 273655

Start: 09/27/2024 11:04 AM

End: 09/27/2024 11:14 AM

by owl.amy

GROSS	TARE	NET	PRICE	AMOUNT
Contaminated Soil				
13	0	13	10.01	\$0.13
Hauler: McNabb Partners				
Driver: Joel Van Busckirk				
Lease: King Tut Federal				
Well: OC14				
WFE #: N/A				
County, State: LEA (NY)				
API #: 5002541542				
Manifest #: 15				
Client Company Name: Eke Javarez				
Rig Name & Number: N/A				
Trucking Co Ticket #: N/A				
Truck Type: Dump Truck				
JCM: Durd				
JCM Count: 13				
RF Test Result: Pass				
-2S Test: Pass				
-2S Testing - PASS				
1	0	1	10.00	\$0.00
Paint Filter - PASS				
1	0	1	10.00	\$0.00
NORM - PASS				
1	0	1	10.00	\$0.00
Additional Photos				
1	0	1	10.00	\$0.00
13	0.0 lbs		10.01	\$0.13

SUBTOTAL ----> \$0.13

TAX ----> \$0.00

ROUNDING ----> \$0.00

TOTAL ----> \$0.14

Customer: ConocoPhillips Company

Driver: Karen Work



Customer Copy



Northern Delaware Basin Landfill
2029 West NM Hwy 128
Jal NM 88252

----WASTE TICKET----

Ticket # 273669
Start:09/27/2024 11:36 AM
End:09/27/2024 11:40 AM
By:owl.amy

GROSS	TARE	NET	PRICE	AMOUNT
Contaminated Soil				
13	0	13	\$0.01	\$0.13
Hauler: McNabb Partners Driver: Victoria Heredia Lease: King Tut Federal Well: 001H AFE #: N/A County, State: LEA (NM) API #: 3002541542 Manifest #: 16 Client Company Man: Iko Tavaréz Rig Name & Number: N/A Trucking Co Ticket #: N/A Truck Type: Dump Truck UOM: CuYd UOM Count: 13 PF Test Result: Pass H2S Test: Pass				
H2S Testing - PASS				
1	0	1	\$0.00	\$0.00
Paint Filter - PASS				
1	0	1	\$0.00	\$0.00
NORM - PASS				
1	0	1	\$0.00	\$0.00
Additional Photos				
1	0	1	\$0.00	\$0.00
17	0.0 lbs		\$0.01	\$0.13
SUBTOTAL ---->				\$0.13
TAX ---->				\$0.01
ROUNDING ---->				\$0.00
TOTAL ---->				\$0.14

Date	Type	Amount
	CASH	\$0.14

Customer: ConocoPhillips Company
Driver: Karen Work

VH



Customer Copy



Northern Delaware Basin Landfill
2029 West NM Hwy 128
Jal NM 88252

---WASTE TICKET---

Ticket # 273672

Start: 09/27/2024 11:46 AM

End: 09/27/2024 11:58 AM

By: owl.amy

GROSS	TARE	NET	PRICE	AMOUNT
Contaminated Soil				
13	0	13	\$0.01	\$0.13
Hauler: McNabb Partners Driver: Victor Manzano Lease: King Tut Federal Well: 001H AFE #: N/A County, State: LEA (NM) API #: 3002541542 Manifest #: 17 Client Company Man: Ike Tavarez Rig Name & Number: N/A Trucking Co Ticket #: N/A Truck Type: Dump Truck UDM: CuYd UDM Count: 13 PF Test Result: Pass H2S Test: Pass				
H2S Testing - PASS	1	0	1	\$0.00
Paint Filter - PASS	1	0	1	\$0.00
NORM - PASS	1	0	1	\$0.00
Additional Photos	1	0	1	\$0.00
17		0.0 lbs	\$0.01	\$0.13
SUBTOTAL --->				\$0.13
TAX --->				\$0.01
ROUNDING --->				\$0.00
TOTAL --->				\$0.14

Date	Type	Amount
	CASH	\$0.14

Customer: ConocoPhillips Company
Driver: Karen Work



Customer Copy



Northern Delaware Basin Landfill
2029 West NM Hwy 128
Jal NM 88252

----WASTE TICKET----

Ticket # 273680

Start: 09/27/2024 12:21 PM

End: 09/27/2024 12:31 PM

By: owl.jayden

GROSS	TARE	NET	PRICE	AMOUNT
Contaminated Soil				
18	0	18	\$0.01	\$0.18
Hauler: McNabb				
Driver: Jesus Fernandez				
Lease: King Tut Fed				
Well: 001				
AFE #: N/A				
County, State: LEA (NM)				
API #: 3002541542				
Client Company Man: Ika Tavaraz				
Rig Name & Number: N/A				
Trucking Co Ticket #: N/A				
Truck Type: Belly Dumps				
UOM: CuYd				
UOM Count: 18				
PF Test Result: Pass				
H2S Test: Pass				
H2S Testing - PASS				
1	0	1	\$0.00	\$0.00
Paint Filter - PASS				
1	0	1	\$0.00	\$0.00
NORM - PASS				
1	0	1	\$0.00	\$0.00
Additional Photos				
1	0	1	\$0.00	\$0.00
22	0.0 lbs		\$0.01	\$0.18
SUBTOTAL ---->				\$0.18
TAX ---->				\$0.01
ROUNDING ---->				\$0.00
TOTAL ---->				\$0.19

Date	Type	Amount
	CASH	\$0.19

Customer: ConocoPhillips Company
Driver: Karen Work



Customer Copy



Northern Delaware Basin Landfill
2029 West NM Hwy 128
Jal NM 88252

----WASTE TICKET----

Ticket # 273683
Start: 09/27/2024 12:30 PM
End: 09/27/2024 12:35 PM
By: owl.jayden

GROSS	TARE	NET	PRICE	AMOUNT
Contaminated Soil				
13	0	13	\$0.01	\$0.13
Hauler: McNabb Driver: Joel Van Buskirk Lease: King Tut Fed Well: 001 County, State: LEA (NM) API #: 3002541542 Client Company Man: Ike Tavarez Rig Name & Number: N/A Trucking Co Ticket #: N/A Truck Type: Dump Truck UOM: CuYd UOM Count: 13 PF Test Result: Pass H2S Test: Pass				
H2S Testing - PASS				
1	0	1	\$0.00	\$0.00
Paint Filter - PASS				
1	0	1	\$0.00	\$0.00
NORM - PASS				
1	0	1	\$0.00	\$0.00
Additional Photos				
1	0	1	\$0.00	\$0.00
17		0.0 lbs	\$0.01	\$0.13
SUBTOTAL ---->				\$0.13
TAX ---->				\$0.01
ROUNDING ---->				\$0.00
TOTAL ---->				\$0.14

Date	Type	Amount
	CASH	\$0.14

Customer: ConocoPhillips Company
Driver: Karen Work



Customer Copy



Northern Delaware Basin Landfill
2029 West NM Hwy 128
Jal NM 88252

----WASTE TICKET----

Ticket # 273684
Start: 09/27/2024 12:35 PM
End: 09/27/2024 12:40 PM
By: owl.jayden

GROSS	TARE	NET	PRICE	AMOUNT
Contaminated Soil				
13	0	13	\$0.01	\$0.13
Hauler: McNabb Driver: Victoria Herdia Lease: King Tut Fed Wall: 001 County, State: LEA (NM) API #: 3002541542 Client Company Man: Iko Tavaréz Rig Name & Number: N/A Trucking Co Ticket #: N/A Truck Type: Dump Truck UOM: CuYd UOM Count: 13 PF Test Result: Pass H2S Test: Pass				
H2S Testing - PASS				
1	0	1	\$0.00	\$0.00
Paint Filter - PASS				
1	0	1	\$0.00	\$0.00
NORM - PASS				
1	0	1	\$0.00	\$0.00
Additional Photos				
1	0	1	\$0.00	\$0.00
17	0.0 lbs		\$0.01	\$0.13
SUBTOTAL ---->				\$0.13
TAX ---->				\$0.01
ROUNDING ---->				\$0.00
TOTAL ---->				\$0.14

Date	Type	Amount
	CASH	\$0.14

Customer: ConocoPhillips Company
Driver: Karen Work



Customer Copy



Northern Delaware Basin Landfill
2029 West NM Hwy 128
Jal NM 88252

----WASTE TICKET----

Ticket # 273689

Start: 09/27/2024 01:01 PM

End: 09/27/2024 01:04 PM

By: cwl.jayden

GROSS	TARE	NET	PRICE	AMOUNT
Contaminated Soil				
13	0	13	\$0.01	\$0.13
Hauler: McNabb				
Driver: Victor Manazo				
Lease: King Tut Fed				
Well: 001				
County, State: LEA (NM)				
API #: 3002541542				
Client Company Man: Ike Tavaraz				
Rig Name & Number: N/A				
Trucking Co Ticket #: N/A				
Truck Type: Dump Truck				
UOM: CuYd				
UOM Count: 13				
PF Test Result: Pass				
H2S Test: Pass				
H2S Testing - PASS				
1	0	1	\$0.00	\$0.00
Paint Filter - PASS				
1	0	1	\$0.00	\$0.00
NORM - PASS				
1	0	1	\$0.00	\$0.00
Additional Photos				
1	0	1	\$0.00	\$0.00
17	0.0 lbs		\$0.01	\$0.13
SUBTOTAL --->				\$0.13
TAX --->				\$0.01
ROUNDING --->				\$0.00
TOTAL --->				\$0.14

Date	Type	Amount
	CASH	\$0.14

Customer: ConocoPhillips Company
Driver: Karen Work



Customer Copy



Northern Delaware Basin Landfill
2029 West NM Hwy 128
Jal NM 88252

----WASTE TICKET----

Ticket # 274816
Start: 10/03/2024 10:29 AM
End: 10/03/2024 10:35 AM
By: owl.adan

GROSS	TARE	NET	PRICE	AMOUNT
Contaminated Soil 18	0	18	\$0.01	\$0.18
Hauler: McNabb Driver: Acie Mayberry Lease: King Tut Fed Well: 001H AFE #: N/A County, State: LEA (NM) API #: 3002541542 Client Company Man: Ike Tavarez Rig Name & Number: N/A Trucking Co Ticket #: N/A Truck Type: Belly Dumps UOM: CuYd UOM Count: 18 PF Test Result: Pass H2S Test: Pass				
H2S Testing - PASS 1	0	1	\$0.00	\$0.00
Paint Filter - PASS 1	0	1	\$0.00	\$0.00
NORM - PASS 1	0	1	\$0.00	\$0.00
Additional Photos 1	0	1	\$0.00	\$0.00
22	0.0 lbs		\$0.01	\$0.18
SUBTOTAL ---->				\$0.18
TAX ---->				\$0.01
ROUNDING ---->				\$0.00
TOTAL ---->				\$0.19

Date	Type	Amount
	CASH	\$0.19

Customer: ConocoPhillips Company
Driver: Karen Work



Customer Copy



Northern Delaware Basin Landfill
2029 West NM Hwy 128
Jal NM 88252

---WASTE TICKET---

Ticket # 274921

Start: 10/03/2024 02:34 PM

End: 10/03/2024 02:44 PM

By: owl.adan

GROSS	TARE	NET	PRICE	AMOUNT
Contaminated Soil				
18	0	18	\$0.01	\$0.18
Hauler: McNabb				
Driver: Acie Mayberry				
Lease: King Tut Fed				
Well: 001H				
AFE #: N/A				
County, State: LEA (NM)				
API #: 3002541542				
Client Company Man: Ike Tavaréz				
Rig Name & Number: N/A				
Truck Type: Belly Dumps				
UDM: CuYd				
UDM Count: 18				
PF Test Result: Pass				
H2S Test: Pass				
H2S Testing - PASS				
1	0	1	\$0.00	\$0.00
Paint Filter - PASS				
1	0	1	\$0.00	\$0.00
NORM - PASS				
1	0	1	\$0.00	\$0.00
Additional Photos				
1	0	1	\$0.00	\$0.00
22	0.0 lbs		\$0.01	\$0.18

SUBTOTAL ---> \$0.18
TAX ---> \$0.01
ROUNDING ---> \$0.00
TOTAL ---> \$0.19

Date	Type	Amount
	CASH	\$0.19

Customer: ConocoPhillips Company
Driver: Karen Work



Customer Copy

WEIGHT TICKET

Ticket # 274849

Start: 10/23/2024 11:51 AM

End: 10/23/2024 12:00 PM

Bascom, adan

GROSS	TARE	NET	PRICE	AMOUNT
Contaminated Soil				
18	0	18	\$0.01	\$0.18
Hauler: McNabb				
Driver: Asia Mayberry				
Lease: King Tut Pad				
Well: OC14				
WFE #: N/A				
County, Seater: LEA (WY)				
API #: 0002541542				
Client Company Man: Ika Tavaraz				
Trig Name & Number: N/A				
Trucking Co Ticket #: N/A				
Truck Type: Belly Dumps				
JCM: Durd				
JCM Count: 18				
RF Test Result: Pass				
H2S Test: Pass				

H2S Testing - PASS	1	0	1	\$0.00	\$0.00
--------------------	---	---	---	--------	--------

Paint Filter - PASS	1	0	1	\$0.00	\$0.00
---------------------	---	---	---	--------	--------

FORM - PASS	1	0	1	\$0.00	\$0.00
-------------	---	---	---	--------	--------

Additional Photos	1	0	1	\$0.00	\$0.00
-------------------	---	---	---	--------	--------

2P	2.0 lbs	\$0.01	\$0.18
----	---------	--------	--------

SUBTOTAL ----> \$0.18

TAX ----> \$0.00

ROUNDING ----> \$0.00

TOTAL ----> \$0.18

Customer: ConocoPhillips Company

Driver: Karen Work



Customer Copy

WEIGHT TICKET

Ticket # 274854

Start: 10/03/2024 12:02 PM

End: 10/03/2024 12:11 PM

By: cwl:adan

GROSS	TARE	NET	PRICE	AMOUNT
Contaminated Soil				
13	0	13	\$0.01	\$0.13
Hauler: N/A				
Driver: Joel Van Buskirk				
Lease: King Tut Pad				
Well: OC14				
WFE #: N/A				
County, State: LSA (NY)				
WPI #: 0102541542				
Client Company: Meco Eke Taveraz				
Rig Name & Number: N/A				
Trucking Co Ticket #: N/A				
Truck Type: Dump Truck				
JOM: Durd				
JOM Count: 13				
RF Test Result: Pass				
-2S Test: Pass				
-2S Testing -- PASS				
1	0	1	\$0.00	\$0.00
Paint Filter -- PASS				
1	0	1	\$0.00	\$0.00
NORM -- PASS				
1	0	1	\$0.00	\$0.00
Additional Photos				
1	0	1	\$0.00	\$0.00
17	0.0 lbs		\$0.01	\$0.13

SUBTOTAL ---> \$0.13

TAX ---> \$0.01

ROUNDING ---> \$0.00

TOTAL ---> \$0.14

Customer: ConocoPhillips Company

Driver: Kieran Work



Customer Copy



Northern Delaware Basin Landfill
2029 West NM Hwy 128
Jal NM 88252

----WASTE TICKET----

Ticket # 274943

Start: 10/03/2024 03:35 PM

End: 10/03/2024 03:40 PM

By: owl.adan

GROSS	TARE	NET	PRICE	AMOUNT
Contaminated Soil				
13	0	13	\$0.01	\$0.13
Hauler: McNabb				
Driver: Joel Van Buskirk				
Lease: King Tut Fed				
Well: 001H				
AFE #: N/A				
County, State: LEA (NM)				
API #: 3002541542				
Client Company Man: Ike Tavarez				
Rig Name & Number: N/A				
Trucking Co Ticket #: N/A				
Truck Type: Dump Truck				
UDM: CuYd				
UDM Count: 13				
PF Test Result: Pass				
H2S Test: Pass				
H2S Testing - PASS				
1	0	1	\$0.00	\$0.00
Paint Filter - PASS				
1	0	1	\$0.00	\$0.00
NORM - PASS				
1	0	1	\$0.00	\$0.00
Additional Photos				
1	0	1	\$0.00	\$0.00

17	0.0 lbs	\$0.01	\$0.13
----	---------	--------	--------

SUBTOTAL	---->	\$0.13
TAX	---->	\$0.01
ROUNDING	---->	\$0.00
TOTAL	---->	\$0.14

Date	Type	Amount
	CASH	\$0.14

Customer: ConocoPhillips Company
Driver: Karen Work



Northern Delaware Basin Landfill
2029 West NM Hwy 128
Jal NM 88252

----WASTE TICKET----

Ticket # 274821
Start: 10/03/2024 10:40 AM
End: 10/03/2024 01:44 PM
By: owl.lisanda

GROSS	TARE	NET	PRICE	AMOUNT
Contaminated Soil				
13	0	13	\$0.01	\$0.13
Hauler: McNabb Driver: Joel Van Buskirk Lease: King Tut Fed Well: 001H AFE #: N/A County, State: LEA (NM) API #: 3002541542 Client Company Man: Ike Tavaraz Rig Name & Number: N/A Trucking Co Ticket #: N/A Truck Type: Dump Truck UOM: CuYd UOM Count: 15 PF Test Result: Pass H2S Test: Pass				
H2S Testing - PASS				
1	0	1	\$0.00	\$0.00
Paint Filter - PASS				
1	0	1	\$0.00	\$0.00
NORM - PASS				
1	0	1	\$0.00	\$0.00
Additional Photos				
1	0	1	\$0.00	\$0.00
17	0.0 lbs		\$0.01	\$0.13

SUBTOTAL ---> \$0.13
TAX ---> \$0.01
ROUNDING ---> \$0.00
TOTAL ---> \$0.14

Date	Type	Amount
	CASH	\$0.14

Customer: ConocoPhillips Company
Driver: Karen Work
Ownership, I hereby state that I am the lawful owner of the material described heron, and I have the right to sell same said material and for the payment received I convey said material to:
Oilfield Water Logistics, LLC

Print name _____

Sign name _____

powered by WeighPay.com



Customer Copy



Northern Delaware Basin Landfill
2029 West NM Hwy 128
Jal NM 88252

----WASTE TICKET----

Ticket # 274891

Start:10/03/2024 01:33 PM

End:10/03/2024 01:41 PM

By:owl.adan

GROSS	TARE	NET	PRICE	AMOUNT
Contaminated Soil				
13	0	13	\$0.01	\$0.13
Hauler: McNabb				
Driver: Joel Van Buskirk				
Lease: King Tut Fed				
Well: 001H				
AFE #: N/A				
County, State: LEA (NM)				
API #: 3002541542				
Client Company Man: Ike Tavaraz				
Rig Name & Number: N/A				
Trucking Co Ticket #: N/A				
Truck Type: Dump Truck				
UDM: CuYd				
UDM Count: 13				
PF Test Result: Pass				
H2S Test: Pass				
H2S Testing - PASS				
1	0	1	\$0.00	\$0.00
Paint Filter - PASS				
1	0	1	\$0.00	\$0.00
NORM - PASS				
1	0	1	\$0.00	\$0.00
Additional Photos				
1	0	1	\$0.00	\$0.00
17	0.0 lbs		\$0.01	\$0.13
SUBTOTAL ---->				\$0.13
TAX ---->				\$0.01
ROUNDING ---->				\$0.00
TOTAL ---->				\$0.14

Date	Type	Amount
	CASH	\$0.14

Customer: ConocoPhillips Company
Driver: Karen Work



Customer Copy



Northern Delaware Basin Landfill
2029 West NM Hwy 128
Jal NM 88252

---WASTE TICKET---

Ticket # 274883
Start: 10/03/2024 12:54 PM
End: 10/03/2024 01:02 PM
By: owl.adan

GROSS	TARE	NET	PRICE	AMOUNT
Contaminated Soil				
15	0	15	\$0.01	\$0.15
Hauler: McNabb Driver: Victor Manzano Lease: King Tut Fed Well: 001H AFE #: N/A County, State: LEA (NM) API #: 3002541542 Client Company Man: Ike Tavaréz Truck Type: Dump Truck UOM: CuYd UOM Count: 15 PF Test Result: Pass H2S Test: Pass				
H2S Testing - PASS				
1	0	1	\$0.00	\$0.00
Paint Filter - FAIL				
1	0	1	\$0.00	\$0.00
NORM - PASS				
1	0	1	\$0.00	\$0.00
Additional Photos				
1	0	1	\$0.00	\$0.00
19		0.0 lbs	\$0.01	\$0.15
SUBTOTAL --->				\$0.15
TAX --->				\$0.01
ROUNDING --->				\$0.00
TOTAL --->				\$0.16

Date	Type	Amount
	CASH	\$0.16

Customer: ConocoPhillips Company
Driver: Karen Work



Customer Copy



Northern Delaware Basin Landfill
2029 West NM Hwy 128
Jal NM 88252

---WASTE TICKET---

Ticket # 274815
Start:10/03/2024 10:25 AM
End:10/03/2024 10:30 AM
By:owl.adan

GROSS	TARE	NET	PRICE	AMOUNT
Contaminated Soil				
15	0	15	\$0.01	\$0.15
Hauler: McNabb Driver: Victor Manzano Lease: King Tut Fed Well: 001H AFE #: N/A County, State: LEA (NM) API #: 3002541542 Client Company Man: Ike Tavarez Rig Name & Number: N/A Trucking Co Ticket #: N/A Truck Type: Dump Truck UOM: CuYd UOM Count: 15 PF Test Result: Pass H2S Test: Pass				
H2S Testing - PASS				
1	0	1	\$0.00	\$0.00
Paint Filter - PASS				
1	0	1	\$0.00	\$0.00
NORM - PASS				
1	0	1	\$0.00	\$0.00
Additional Photos				
1	0	1	\$0.00	\$0.00
19	0.0 lbs		\$0.01	\$0.15
SUBTOTAL ---->				\$0.15
TAX ---->				\$0.01
ROUNDING ---->				\$0.00
TOTAL ---->				\$0.16

Date	Type	Amount
	CASH	\$0.16

Customer: ConocoPhillips Company
Driver: Karen Work



Customer Copy



Northern Delaware Basin Landfill
2029 West NM Hwy 128
Jal NM 88252

----WASTE TICKET----

Ticket # 274930

Start: 10/03/2024 02:54 PM

End: 10/03/2024 03:04 PM

By: owl.adan

GROSS	TARE	NET	PRICE	AMOUNT
Contaminated Soil				
15	0	15	\$0.01	\$0.15

Hauler: McNabb
Driver: Victor Manzano
Lease: King Tut Fed
Well: 001H
AFE #: N/A
County, State: LEA (NM)
API #: 3002541542
Client Company Man: Ike Tavaraz
Rig Name & Number: N/A
Trucking Co Ticket #: N/A
Truck Type: Dump Truck
UOM: CuYd
UOM Count: 15
PF Test Result: Pass
H2S Test: Pass

H2S Testing - PASS				
1	0	1	\$0.00	\$0.00

Paint Filter - PASS				
1	0	1	\$0.00	\$0.00

NORM - PASS				
1	0	1	\$0.00	\$0.00

Additional Photos				
1	0	1	\$0.00	\$0.00

19	0.0 lbs	\$0.01	\$0.15
SUBTOTAL --->		\$0.15	
TAX --->		\$0.01	
ROUNDING --->		\$0.00	
TOTAL --->		\$0.16	

Date	Type	Amount
	CASH	\$0.16

Customer: ConocoPhillips Company
Driver: Karen Work



Customer Copy



Northern Delaware Basin Landfill
2029 West NM Hwy 128
Jal NM 88252

---WASTE TICKET---

Ticket # 274939
Start: 10/03/2024 03:15 PM
End: 10/03/2024 03:25 PM
By: owl.adan

GROSS	TARE	NET	PRICE	AMOUNT
Contaminated Soil				
13	0	13	\$0.01	\$0.13
Hauler: McNabb				
Driver: Jesus Fernandez				
Lease: King Tut Fed				
Well: 001H				
AFE #: N/A				
County, State: LEA (NM)				
API #: 3002541542				
Client Company Man: Ike Tavaraz				
Rig Name & Number: N/A				
Trucking Co Ticket #: N/A				
Truck Type: End Dump				
UOM: CuYd				
UOM Count: 13				
PF Test Result: Fail				
H2S Test: Pass				
H2S Testing - PASS				
1	0	1	\$0.00	\$0.00
Paint Filter - PASS				
1	0	1	\$0.00	\$0.00
NORM - PASS				
1	0	1	\$0.00	\$0.00
Additional Photos				
1	0	1	\$0.00	\$0.00
17	0.0 lbs		\$0.01	\$0.13
SUBTOTAL --->				\$0.13
TAX --->				\$0.01
ROUNDING --->				\$0.00
TOTAL --->				\$0.14

Date	Type	Amount
	CASH	\$0.14

Customer: ConocoPhillips Company
Driver: Karen Work



Customer Copy

-----WEIGHT TICKET-----

Ticket # 274842

Start: 10/03/2024 11:35 AM

End: 10/03/2024 11:44 AM

Bridgeland

GROSS	TARE	NET	PRICE	AMOUNT
Contaminated Soil				
15	0	15	\$0.01	\$0.15

hauler: McNabb

Driver: Victor Manzano

Lease: King Tut Pad

well: OC1H

WFE #: N/A

County, State: LEA (NY)

API #: 5002541542

Client Company Name: Ike Tavaraz

Rig Name & Number: N/A

Trucking Co Ticket #: N/A

Truck Type: Dump Truck

LCM: CUYD

LCM Count: 15

RF Test Result: Pass

RS Test: Pass

-2S Testing - PASS

1	0	1	\$0.00	\$0.00
---	---	---	--------	--------

Paint Filter - PASS

1	0	1	\$0.00	\$0.00
---	---	---	--------	--------

VORM - PASS

1	0	1	\$0.00	\$0.00
---	---	---	--------	--------

Additional Photos

1	0	1	\$0.00	\$0.00
---	---	---	--------	--------

15	0.0 lbs	\$0.01	\$0.15
----	---------	--------	--------

SUBTOTAL ----> \$0.15

TAX ----> \$0.01

ROUNDING ----> \$0.00

TOTAL ----> \$0.16

Customer: ConocoPhillips Company

Driver: Karen Work



Customer Copy



Northern Delaware Basin Landfill
2029 West NM Hwy 128
Jal NM 88252

---WASTE TICKET---

Ticket # 274873
Start: 10/03/2024 12:33 PM
End: 10/03/2024 12:58 PM
By: owl.adan

GROSS	TARE	NET	PRICE	AMOUNT
Contaminated Soil				
18	0	18	\$0.01	\$0.18
Hauler: McNabb Driver: Jesus Hernandez Lease: King Tut Fed Well: 001H AFE #: N/A County, State: LEA (NM) API #: 3002541542 Client Company Man: Ike Tavaréz Rig Name & Number: N/A Trucking Co Ticket #: N/A Truck Type: End Dump UDM: CuYd UDM Count: 18 PF Test Result: Pass H2S Test: Pass				
H2S Testing - PASS				
1	0	1	\$0.00	\$0.00
Paint Filter - PASS				
1	0	1	\$0.00	\$0.00
NORM - PASS				
1	0	1	\$0.00	\$0.00
Additional Photos				
1	0	1	\$0.00	\$0.00
22		0.0 lbs	\$0.01	\$0.18
SUBTOTAL ---->				\$0.18
TAX ---->				\$0.01
ROUNDING ---->				\$0.00
TOTAL ---->				\$0.19

Date	Type	Amount
	CASH	\$0.19

Customer: ConocoPhillips Company
Driver: Karen Work



Customer Copy

WEIGHT TICKET

Ticket # 274828

Start: 10/03/2024 10:38 AM

End: 10/03/2024 11:04 AM

Brazoria, TX

GROSS	TARE	NET	PRICE	AMOUNT
Contaminated Soil	0	1	10.00	\$0.00

Hauler: McNabb

Driver: Jesus Hernandez

Lease: King Tut Fed

Well: OCT4

WFE #: N/A

County, State: LBA (NY)

API #: 3002541543

Client Company Mgr: Ike Tavaréz

Rig Name & Number: 4/A

Trucking Co Ticket #: N/A

Truck Type: End Dump

LOM: Durd

LOM Count: 20

RF Test Result: Pass

-2S Test: Pass

-2S Testing -- PASS

0	1	10.00	\$0.00
---	---	-------	--------

Paint Filter -- PASS

0	1	10.00	\$0.00
---	---	-------	--------

WORM -- PASS

0	1	10.00	\$0.00
---	---	-------	--------

Additional Photos

0	1	10.00	\$0.00
---	---	-------	--------

0	0.0 lbs	10.00	\$0.00
---	---------	-------	--------

SUBTOTAL ----> \$0.00

TAX ----> \$0.00

ROUNDING ----> \$0.00

TOTAL ----> \$0.00

Customer: ConocoPhillips Company

Driver: Karen Work



Customer Copy



Northern Delaware Basin Landfill
2029 West NM Hwy 128
Jal NM 88252

----WASTE TICKET----

Ticket # 275683

Start:10/07/2024 09:20 AM

End:10/07/2024 09:30 AM

By:owl.adan

GROSS	TARE	NET	PRICE	AMOUNT
-------	------	-----	-------	--------

Contaminated Soil				
16	0	16	\$0.01	\$0.16

Hauler: McNabb

Driver: Josh Busby

Lease: King Tut 1 CTB

Well: N/A

AFE #: N/A

County, State: LEA (NM)

API #: N/A

Client Company Man: Ike Tavaraz

Rig Name & Number: N/A

Trucking Co Ticket #: N/A

Truck Type: Dump Truck

UOM: CuYd

UOM Count: 16

PF Test Result: Pass

H2S Test: Pass

H2S Testing - PASS				
1	0	1	\$0.00	\$0.00

Paint Filter - PASS				
1	0	1	\$0.00	\$0.00

NORM - PASS				
1	0	1	\$0.00	\$0.00

Additional Photos				
1	0	1	\$0.00	\$0.00

20	0.0 lbs		\$0.01	\$0.16
----	---------	--	--------	--------

SUBTOTAL ----> \$0.16

TAX ----> \$0.01

ROUNDING ----> \$0.00

TOTAL ----> \$0.17

Date	Type	Amount
------	------	--------

	CASH	\$0.17
--	------	--------

Customer: ConocoPhillips Company

Driver: Karen Work



Northern Delaware Basin Landfill
2029 West NM Hwy 128
Jal NM 88252

----WASTE TICKET----

Ticket # 275697
Start: 10/07/2024 10:43 AM
End: 10/07/2024 10:49 AM
By: owl.lisanda

GRROSS	TARE	NET	PRICE	AMOUNT
Contaminated Soil				
1	0	1	\$0.01	\$0.01
Hauler: McNabb Partners				
Driver: Josh Bisdey				
Lease: King Tut 1 CTB				
Wall: N/A				
AFE #: N/A				
County, State: LEA (NM)				
API #: N/A				
Manifest #: 39				
Client Company Man: Ike Tavaréz				
Rig Name & Number: N/A				
Trucking Co Ticket #: N/A				
Truck Type: Dump Truck				
UOM: CuYd				
UOM Count: 16				
PF Test Result: Pass				
H2S Test: Pass				
H2S Testing - PASS				
1	0	1	\$0.00	\$0.00
Paint Filter - PASS				
1	0	1	\$0.00	\$0.00
NORM - PASS				
1	0	1	\$0.00	\$0.00
Additional Photos				
1	0	1	\$0.00	\$0.00
5	0.0 lbs		\$0.00	\$0.01
			SUBTOTAL --->	\$0.01
			TAX --->	\$0.00
			ROUNDING --->	\$0.00
			TOTAL --->	\$0.01

Date	Type	Amount
	CASH	\$0.01

Customer: ConocoPhillips Company

Driver: Karen Work

Ownership, I hereby state that I am the lawful owner of the material described herein, and I have the right to sell same said material and for the payment received I convey said material to:

Oilfield Water Logistics, LLC

Print name _____

Sign name _____

powered by WeighPay.com



Customer Copy



Northern Delaware Basin Landfill
2029 West NM Hwy 128
Jal NM 88252

---WASTE TICKET---

Ticket # 275753

Start: 10/07/2024 03:14 PM

End: 10/07/2024 03:17 PM

By: owl.adan

GROSS	TARE	NET	PRICE	AMOUNT
Contaminated Soil				
16	0	16	\$0.01	\$0.16
Hauler: McNabb Driver: Josh Busby Lease: King Tut 1 CTB Well: N/A AFE #: N/A County, State: LEA (NM) API #: N/A Client Company Man: Ike Tavaraz Rig Name & Number: N/A Trucking Co Ticket #: N/A Truck Type: Dump Truck UDM: CuYd UDM Count: 16 PF Test Result: Pass H2S Test: Pass				
H2S Testing - PASS				
1	0	1	\$0.00	\$0.00
Paint Filter - PASS				
1	0	1	\$0.00	\$0.00
NORM - PASS				
1	0	1	\$0.00	\$0.00
Additional Photos				
1	0	1	\$0.00	\$0.00

20	0.0 lbs	\$0.01	\$0.16
----	---------	--------	--------

SUBTOTAL	--->	\$0.16
TAX	--->	\$0.01
ROUNDING	--->	\$0.00
TOTAL	--->	\$0.17

Date	Type	Amount
	CASH	\$0.17

Customer: ConocoPhillips Company
Driver: Karen Work



Customer Copy

WEIGHT TICKET

Ticket # 275710

Start: 10/07/2024 11:35 AM

End: 10/07/2024 12:06 PM

By: Paul Lisencia

GROSS	TARE	NET	PRICE	AMOUNT
Contaminated Soil				
16	0	16	\$0.01	\$0.16
Hauler: McNabb Partners				
Driver: Josh Busby				
Lease: King Tut # 018				
Well: N/A				
NFE #: N/A				
County, State: LEA (NM)				
API #: N/A				
Client Company: Mani Ixi Tavaraz				
Rig Name & Number: N/A				
Trucking Co Ticket #: N/A				
Truck Type: Dump Truck				
JCM: Durd				
JCM Count: 16				
RF Test Result: Fail				
R2S Test: Pass				
R2S Testing - PASS				
1	0	1	\$0.00	\$0.00
Paint Filter - PASS				
1	0	1	\$0.00	\$0.00
VORM - PASS				
1	0	1	\$0.00	\$0.00
Additional Photos				
1	0	1	\$0.00	\$0.00
20	0.0 lbs		\$0.01	\$0.16
SUBTOTAL ---->				\$0.16
TAX ---->				\$0.00
ROUNDING ---->				\$0.00
TOTAL ---->				\$0.17

Customer: ConocoPhillips Company
Driver: Karen Work



Customer Copy



Northern Delaware Basin Landfill
2029 West NM Hwy 128
Jal NM 88252

---WASTE TICKET---

Ticket # 275688
Start: 10/07/2024 09:58 AM
End: 10/07/2024 10:06 AM
By: owl.adan

GROSS	TARE	NET	PRICE	AMOUNT
Contaminated Soil				
13	0	13	\$0.01	\$0.13
Hauler: McNabb Driver: Rosa Hernandez Lease: King Tut 1 CTB Well: N/A AFE #: N/A County, State: LEA (NM) API #: N/A Client Company Man: Ike Tavaraz Rig Name & Number: N/A Trucking Co Ticket #: N/A Truck Type: Dump Truck UOM: CuYd UOM Count: 13 PF Test Result: Pass H2S Test: Pass				
H2S Testing - PASS				
1	0	1	\$0.00	\$0.00
Paint Filter - PASS				
1	0	1	\$0.00	\$0.00
NORM - PASS				
1	0	1	\$0.00	\$0.00
Additional Photos				
1	0	1	\$0.00	\$0.00
17		0.0 lbs	\$0.01	\$0.13

SUBTOTAL ---> \$0.13
TAX ---> \$0.01
ROUNDING ---> \$0.00
TOTAL ---> \$0.14

Date	Type	Amount
	CASH	\$0.14

Customer: ConocoPhillips Company
Driver: Karen Work



Customer Copy



Northern Delaware Basin Landfill
2029 West NM Hwy 128
Jal NM 88252

---WASTE TICKET---

Ticket # 275704
Start: 10/07/2024 11:29 AM
End: 10/07/2024 11:34 AM
By: owl.lisanda

GROSS	TARE	NET	PRICE	AMOUNT
Contaminated Soil				
15	0	15	\$0.01	\$0.15
Hauler: McNabb Partner Driver: Roas Hernandez Lease: King Tut 1 CTB Well: N/A AFE #: N/A County, State: LEA (NM) API #: N/A Client Company Man: Ike Tavaréz Rig Name & Number: N/A Trucking Co Ticket #: N/A Truck Type: Dump Truck UOM: CuYd UOM Count: 15 PF Test Result: Pass H2S Test: Pass				
H2S Testing - PASS				
1	0	1	\$0.00	\$0.00
Paint Filter - PASS				
1	0	1	\$0.00	\$0.00
NORM - PASS				
1	0	1	\$0.00	\$0.00
Additional Photos				
1	0	1	\$0.00	\$0.00
19	0.0 lbs		\$0.01	\$0.15
SUBTOTAL --->				\$0.15
TAX --->				\$0.01
ROUNDING --->				\$0.00
TOTAL --->				\$0.16

Date	Type	Amount
	CASH	\$0.16

Customer: ConocoPhillips Company
Driver: Karen Work



Customer Copy



Northern Delaware Basin Landfill
2029 West NM Hwy 128
Jal NM 88252

---WASTE TICKET---

Ticket # 275729
Start: 10/07/2024 12:50 PM
End: 10/07/2024 12:58 PM
By: owl.adan

GROSS	TARE	NET	PRICE	AMOUNT
Contaminated Soil				
13	0	13	\$0.01	\$0.13
Hauler: McNabb Driver: Rose Hernandez Lease: King Tut 1 CTB Well: N/A AFE #: N/A County, State: LEA (NM) API #: N/A Client Company Man: Ike Tavaréz Rig Name & Number: N/A Trucking Co Ticket #: N/A Truck Type: Dump Truck UDM: CuYd UDM Count: 13 PF Test Result: Pass H2S Test: Pass				
H2S Testing - PASS				
1	0	1	\$0.00	\$0.00
Paint Filter - PASS				
1	0	1	\$0.00	\$0.00
NORM - PASS				
1	0	1	\$0.00	\$0.00
Additional Photos				
1	0	1	\$0.00	\$0.00
17	0.0 lbs		\$0.01	\$0.13
SUBTOTAL ---->				\$0.13
TAX ---->				\$0.01
ROUNDING ---->				\$0.00
TOTAL ---->				\$0.14

Date	Type	Amount
	CASH	\$0.14

Customer: ConocoPhillips Company
Driver: Karen Work



Customer Copy



Northern Delaware Basin Landfill
2029 West NM Hwy 128
Jal NM 88252

---WASTE TICKET---

Ticket # 275698

Start: 10/07/2024 10:44 AM

End: 10/07/2024 10:50 AM

By: owl.adan

GROSS	TARE	NET	PRICE	AMOUNT
Contaminated Soil				
13	0	13	\$0.01	\$0.13
Hauler: McNabb Driver: Victoria Heredia Lease: King Tut 1 CTB Well: N/A AFE #: N/A County, State: LEA (NM) API #: N/A Client Company Man: Ike Tavaréz Rig Name & Number: N/A Trucking Co Ticket #: N/A Truck Type: Dump Truck UOM: CuYd UOM Count: 13 PF Test Result: Pass H2S Test: Pass				
H2S Testing - PASS				
1	0	1	\$0.00	\$0.00
Paint Filter - PASS				
1	0	1	\$0.00	\$0.00
NORM - PASS				
1	0	1	\$0.00	\$0.00
Additional Photos				
1	0	1	\$0.00	\$0.00
17	0.0 lbs		\$0.01	\$0.13
SUBTOTAL --->				\$0.13
TAX --->				\$0.01
ROUNDING --->				\$0.00
TOTAL --->				\$0.14

Date	Type	Amount
	CASH	\$0.14

Customer: ConocoPhillips Company
Driver: Karen Work

VH



Customer Copy



Northern Delaware Basin Landfill
2029 West NM Hwy 128
Jal NM 88252

---WASTE TICKET---

Ticket # 275756
Start: 10/07/2024 03:22 PM
End: 10/07/2024 03:27 PM
By: owl.adan

GROSS	TARE	NET	PRICE	AMOUNT
Contaminated Soil 13	0	13	\$0.01	\$0.13
Hauler: McNabb Driver: Victoria Heredia Lease: King Tut 1 CTB Well: N/A AFE #: N/A County, State: LEA (NM) API #: N/A Client Company Man: Ike Taveraz Rig Name & Number: N/A Trucking Co Ticket #: N/A Truck Type: Dump Truck UOM: CuYd UOM Count: 13 PF Test Result: Pass H2S Test: Pass				
H2S Testing - PASS 1	0	1	\$0.00	\$0.00
Paint Filter - PASS 1	0	1	\$0.00	\$0.00
NORM - PASS 1	0	1	\$0.00	\$0.00
Additional Photos 1	0	1	\$0.00	\$0.00
17	0.0 lbs		\$0.01	\$0.13
SUBTOTAL ---->				\$0.13
TAX ---->				\$0.01
ROUNDING ---->				\$0.00
TOTAL ---->				\$0.14

Date	Type	Amount
	CASH	\$0.14

Customer: ConocoPhillips Company
Driver: Karen Work

VH



Customer Copy

WEIGHT TICKET

Ticket # 275713

Start: 10/07/2024 12:07 PM

End: 10/07/2024 12:12 PM

By: B. L. Ladan

GROSS	TARE	NET	PRICE	AMOUNT
Contaminated Soil				
13	0	13	\$0.01	\$0.13
Hauler: Nalab				
Driver: Victoria Hernandez				
Lease: King Tut 1 CTR				
Well: N/A				
API #: N/A				
County, State: LEA (NV)				
API #: N/A				
Client Company: Mani Ike Taveraz				
Rig Name & Number: N/A				
Trucking Co Ticket #: N/A				
Truck Type: Dump Truck				
JOM: Durd				
JOM Count: 13				
PF Test Results: Pass				
-2S Test: Pass				
-2S Testing - PASS				
0		1	\$0.00	\$0.00
Paint Filter - PASS				
0		1	\$0.00	\$0.00
VORM - PASS				
0		1	\$0.00	\$0.00
Additional Photos				
0		1	\$0.00	\$0.00
13		0.0 lbs	\$0.01	\$0.13

SUBTOTAL ----> \$0.13

TAX ----> \$0.00

ROUNDING ----> \$0.00

TOTAL ----> \$0.14

Customer: ConocoPhillips Company

Driver: Karen Work

VH



Customer Copy



Northern Delaware Basin Landfill
2029 West NM Hwy 128
Jal NM 88252

----WASTE TICKET----

Ticket # 275684
Start: 10/07/2024 09:30 AM
End: 10/07/2024 09:35 AM
By: owl.adan

GROSS	TARE	NET	PRICE	AMOUNT
Contaminated Soil 13	0	13	\$0.01	\$0.13
Hauler: McNabb Driver: Victoria Heredia Lease: King Tut 1 CTB Well: N/A AFE #: N/A County, State: LEA (NM) API #: N/A Client Company Man: Ike Tavaréz Rig Name & Number: N/A Trucking Co Ticket #: N/A Truck Type: Dump Truck UDM: CuYd UDM Count: 13 PF Test Result: Pass H2S Test: Pass				
H2S Testing - PASS 1	0	1	\$0.00	\$0.00
Paint Filter - PASS 1	0	1	\$0.00	\$0.00
NORM - PASS 1	0	1	\$0.00	\$0.00
Additional Photos 1	0	1	\$0.00	\$0.00
17	0.0 lbs		\$0.01	\$0.13

SUBTOTAL ----> \$0.13
TAX ----> \$0.01
ROUNDING ----> \$0.00
TOTAL ----> \$0.14

Date	Type	Amount
	CASH	\$0.14

Customer: ConocoPhillips Company
Driver: Karen Work

VH



Customer Copy



Northern Delaware Basin Landfill
2029 West NM Hwy 128
Jal NM 88252

---WASTE TICKET---

Ticket # 275687
Start: 10/07/2024 09:56 AM
End: 10/07/2024 10:05 AM
By: owl.lisanda

GROSS	TARE	NET	PRICE	AMOUNT
Contaminated Soil				
15	0	15	\$0.01	\$0.15
Hauler: McNabb Partners				
Driver: Joel Van Briskick				
Lease: King Tut Fed CTB				
Well: N/A				
AFE #: N/A				
County, State: LEA (NM)				
API #: N/A				
Manifest #: 37				
Rig Name & Number: N/A				
Trucking Co Ticket #: N/A				
Truck Type: Dump Truck				
UOM: CuYd				
UOM Count: 12				
PF Test Result: Pass				
H2S Test: Pass				
H2S Testing - PASS				
1	0	1	\$0.00	\$0.00
Paint Filter - PASS				
1	0	1	\$0.00	\$0.00
NORM - PASS				
1	0	1	\$0.00	\$0.00
Additional Photos				
1	0	1	\$0.00	\$0.00
19		0.0 lbs	\$0.01	\$0.15
SUBTOTAL --->				\$0.15
TAX --->				\$0.01
ROUNDING --->				\$0.00
TOTAL --->				\$0.16

Date	Type	Amount
	CASH	\$0.16

Customer: ConocoPhillips Company
Driver: Karen Work



- Customer Copy



Northern Delaware Basin Landfill
2029 West NM Hwy 128
Jal NM 88252

---WASTE TICKET---
Ticket # 275725
Start: 10/07/2024 12:42 PM
End: 10/07/2024 12:49 PM
By: owl.adan

GROSS	TARE	NET	PRICE	AMOUNT
Contaminated Soil 13	0	13	\$0.01	\$0.13
Hauler: McNabb Driver: Joel Van Buskirk Lease: King Tut 1 CTB Well: N/A AFE #: N/A County, State: LEA (NM) API #: N/A Client Company Man: Ike Tavarez Rig Name & Number: N/A Trucking Co Ticket #: N/A Truck Type: Dump Truck UOM: CuYd UOM Count: 13 PF Test Result: Pass H2S Test: Pass				
H2S Testing - PASS 1	0	1	\$0.00	\$0.00
Paint Filter - PASS 1	0	1	\$0.00	\$0.00
NORM - PASS 1	0	1	\$0.00	\$0.00
Additional Photos 1	0	1	\$0.00	\$0.00
17	0.0 lbs		\$0.01	\$0.13
SUBTOTAL --->				\$0.13
TAX --->				\$0.01
ROUNDING --->				\$0.00
TOTAL --->				\$0.14

Date	Type	Amount
	CASH	\$0.14

Customer: ConocoPhillips Company
Driver: Karen Work



Customer Copy

WEIGHT TICKET

Ticket # 275898

Start: 10/08/2024 08:52 AM

End: 10/08/2024 09:57 AM

By: [illegible] License

GROSS	TARE	NET	PRICE	AMOUNT
Contaminated Soil				
15	0	15	10.01	\$0.16

hauler: McNabb Partners

Driver: John Busby

Lease: King Tut 10/08

Well: N/A

API #: N/A

County: Sevier LEA (WV)

API #: N/A

Client Company Name: Ice Traverser

Trig Name & Number: N/A

Trucking Co Ticket #: N/A

Truck Type: Dump Truck

SCM: Durd

SCM Count: 16

RF Test Result: Pass

H2S Test: Pass

H2S Testing - PASS				
0	1	10.00	\$0.00	

Paint Filter - PASS				
0	1	10.00	\$0.00	

NORM - PASS				
0	1	10.00	\$0.00	

Additional Photos				
0	1	10.00	\$0.00	

20	0.0 lbs	10.01	\$0.16
----	---------	-------	--------

SUBTOTAL ----> \$0.16

TAX ----> \$0.00

ROUNDING ----> \$0.00

TOTAL ----> \$0.17

Customer: ConocoPhillips Company

Driver: Karen Work



Customer Copy

WEIGHT TICKET

Ticket # 275991

Start: 10/08/2024 12:11 PM

End: 10/08/2024 12:37 PM

By: cal.lisanda

GROSS	TARE	NET	PRICE	AMOUNT
Contaminated Soil	0	16	10.01	\$0.16

Hauler: McNabb Partners

Driver: Josh Busby

Lease: King Tut 1 CTR

Well: N/A

WFE #: N/A

County, State: LA (CA)

API #: N/A

Client Company Name: Ixe Tavaraz

Trig Name & Number: N/A

Trucking Co Ticket #: N/A

Truck Type: Dump Truck

SCM: Durd

SCM Count: 16

AP Test Result: Pass

2S Test: Pass

-2S Testing - PASS	0	1	10.00	\$0.00
--------------------	---	---	-------	--------

Paint Filter - PASS	0	1	10.00	\$0.00
---------------------	---	---	-------	--------

NORM - PASS	0	1	10.00	\$0.00
-------------	---	---	-------	--------

Additional Photos	0	1	10.00	\$0.00
-------------------	---	---	-------	--------

20	2.0 lbs	10.01	\$0.16
----	---------	-------	--------

SUBTOTAL ----> \$0.16

TAX ----> \$0.00

ROUNDING ----> \$0.00

TOTAL ----> \$0.17

Customer: ConocoPhillips Company

Driver: Karen Work



Customer Copy

WEIGHT TICKET

Ticket # 275966

Start: 10/08/2024 03:21 PM

End: 10/08/2024 03:23 PM

By: C.W. Lisanca

GROSS	TARE	NET	PRICE	AMOUNT
-------	------	-----	-------	--------

Contaminated Soil

16	0	16	\$0.01	\$0.16
----	---	----	--------	--------

Hauler: McNabb Partner

Driver: Josh Busby

Lease: King Tut 1 CTR

Well: N/A

WFE #: N/A

County: Shasta LEA (W)

API #: N/A

Manifest #: N/A

Client Company: Matt Eke Travares

Trig Name & Number: N/A

Trucking Co Ticket #: N/A

Truck Type: Dump Truck

JCM: Durd

JCM Count: 16

PF Test Result: Pass

2S Test: Pass

2S Testing - PASS

0	1	\$0.00	\$0.00
---	---	--------	--------

Paint Filter - PASS

0	1	\$0.00	\$0.00
---	---	--------	--------

VORM - PASS

0	1	\$0.00	\$0.00
---	---	--------	--------

Additional Photos

0	1	\$0.00	\$0.00
---	---	--------	--------

20	0.0 lbs	\$0.01	\$0.16
----	---------	--------	--------

SUBTOTAL ----> \$0.16

TAX ----> \$0.00

ROUNDING ----> \$0.00

TOTAL ----> \$0.17

Customer: ConocoPhillips Company

Driver: Karen Work



Customer Copy

WEIGHT TICKET

Ticket # 275933

Start: 10/03/2024 12:44 PM

End: 10/03/2024 12:51 PM

By: Gal. Lisanca

GROSS	TARE	NET	PRICE	AMOUNT
Contaminated Soil				
13	0	13	\$0.01	\$0.13
Hauler: McNabb Partners				
Driver: Elias Hernandez				
Lease: King Tut 1013				
Well: N/A				
API #: N/A				
County: Seated LEA (NY)				
API #: N/A				
Client Company Name: Ika Travarez				
Trig Name & Number: N/A				
Trucking Co Ticket #: N/A				
Truck Type: Dump Truck				
JCM: DUY				
JCM Count: 13				
PF Test Results: Pass				
-2S Test: Pass				
-2S Testing - PASS				
1	0	1	\$0.00	\$0.00
Paint Filter - PASS				
1	0	1	\$0.00	\$0.00
VORM - PASS				
1	0	1	\$0.00	\$0.00
Additional Photos				
1	0	1	\$0.00	\$0.00
13	0.0 lbs		\$0.01	\$0.13

SUBTOTAL ----> \$0.13

TAX ----> \$0.01

ROUNDING ----> \$0.00

TOTAL ----> \$0.14

Customer: ConocoPhillips Company

Driver: Brian Work



Customer Copy



Northern Delaware Basin Landfill
2029 West NM Hwy 128
Jal NM 88252

---WASTE TICKET---

Ticket # 276118
Start: 10/09/2024 12:43 PM
End: 10/09/2024 12:49 PM
By: owl.adan

GROSS	TARE	NET	PRICE	AMOUNT
Contaminated Soil				
16	0	16	\$0.01	\$0.16
Hauler: McNabb Driver: Josh Bushy Lease: King Tut 1 CTB Well: N/A AFE #: N/A County, State: LEA (NM) API #: N/A Client Company Man: Ike Tavaréz Rig Name & Number: N/A Trucking Co Ticket #: N/A Truck Type: Dump Truck UOM: CuYd UOM Count: 16 PF Test Result: Pass H2S Test: Pass				
H2S Testing - PASS				
1	0	1	\$0.00	\$0.00
Paint Filter - PASS				
1	0	1	\$0.00	\$0.00
NORM - PASS				
1	0	1	\$0.00	\$0.00
Additional Photos				
1	0	1	\$0.00	\$0.00
20	0.0 lbs		\$0.01	\$0.16
SUBTOTAL --->				\$0.16
TAX --->				\$0.01
ROUNDING --->				\$0.00
TOTAL --->				\$0.17

Date	Type	Amount
	CASH	\$0.17

Customer: ConocoPhillips Company
Driver: Karen Work



Customer Copy



Northern Delaware Basin Landfill
2029 West NM Hwy 128
Jal NM 88252

---WASTE TICKET---

Ticket # 275701
Start:10/07/2024 11:17 AM
End:10/07/2024 11:24 AM
By:owl.adan

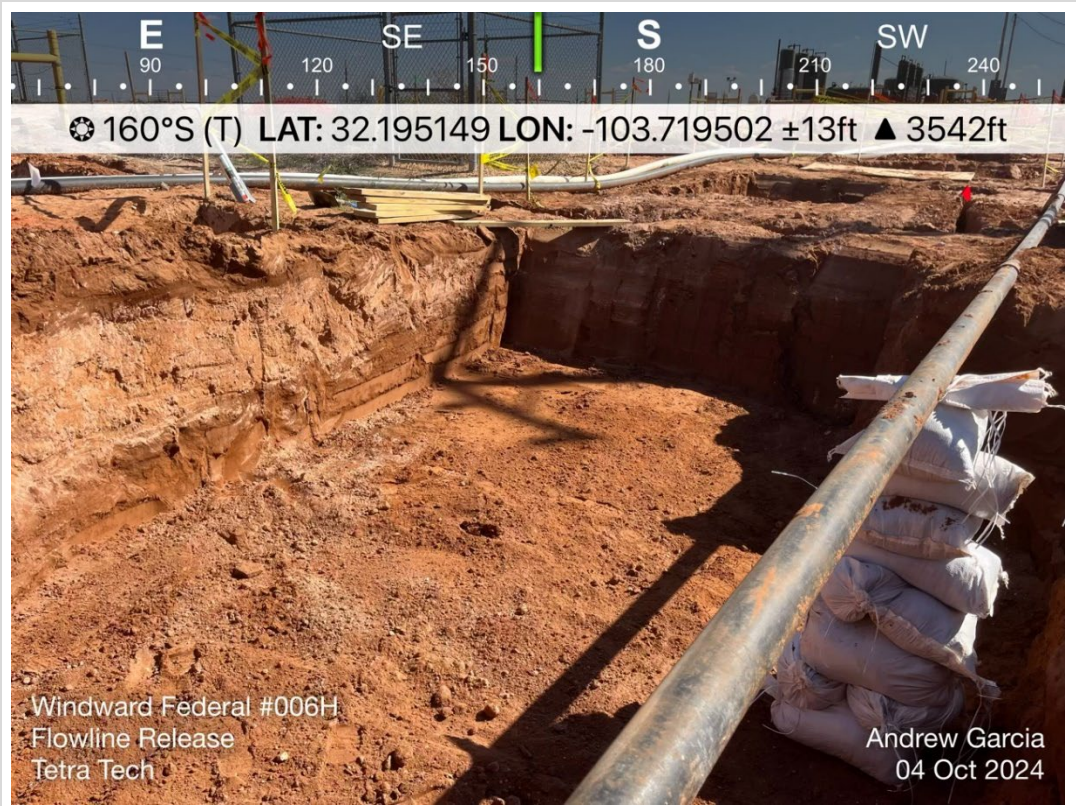
GROSS	TARE	NET	PRICE	AMOUNT
Contaminated Soil				
13	0	13	\$0.01	\$0.13
Hauler: McNabb Driver: Joel Van Buskirk Lease: King Tut 1 CTB Well: N/A AFE #: N/A County, State: LEA (NM) API #: N/A Client Company Man: Ike Tavaréz Rig Name & Number: N/A Trucking Co Ticket #: N/A Truck Type: Dump Truck UOM: CuYd UOM Count: 13 PF Test Result: Pass H2S Test: Pass				
H2S Testing - PASS				
1	0	1	\$0.00	\$0.00
Paint Filter - PASS				
1	0	1	\$0.00	\$0.00
NORM - PASS				
1	0	1	\$0.00	\$0.00
Additional Photos				
1	0	1	\$0.00	\$0.00
17	0.0 lbs		\$0.01	\$0.13
SUBTOTAL ---->				\$0.13
TAX ---->				\$0.01
ROUNDING ---->				\$0.00
TOTAL ---->				\$0.14

Date	Type	Amount
	CASH	\$0.14

Customer: ConocoPhillips Company
Driver: Karen Work

APPENDIX F

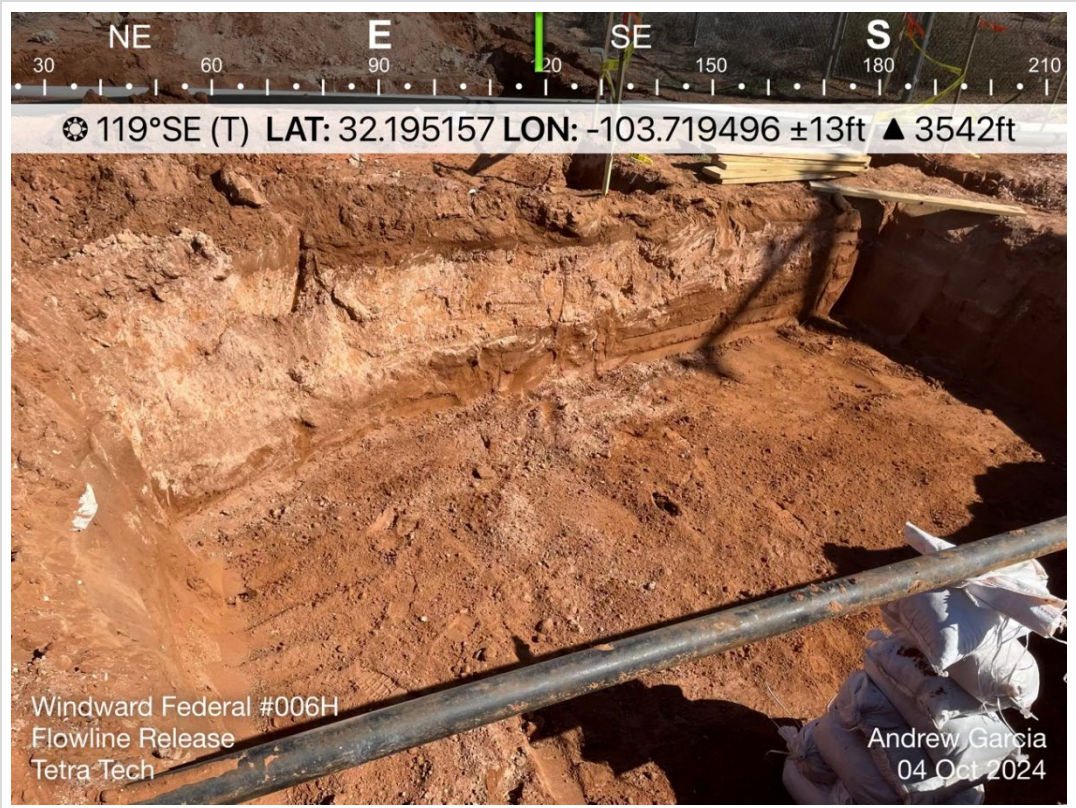
Photographic Documentation



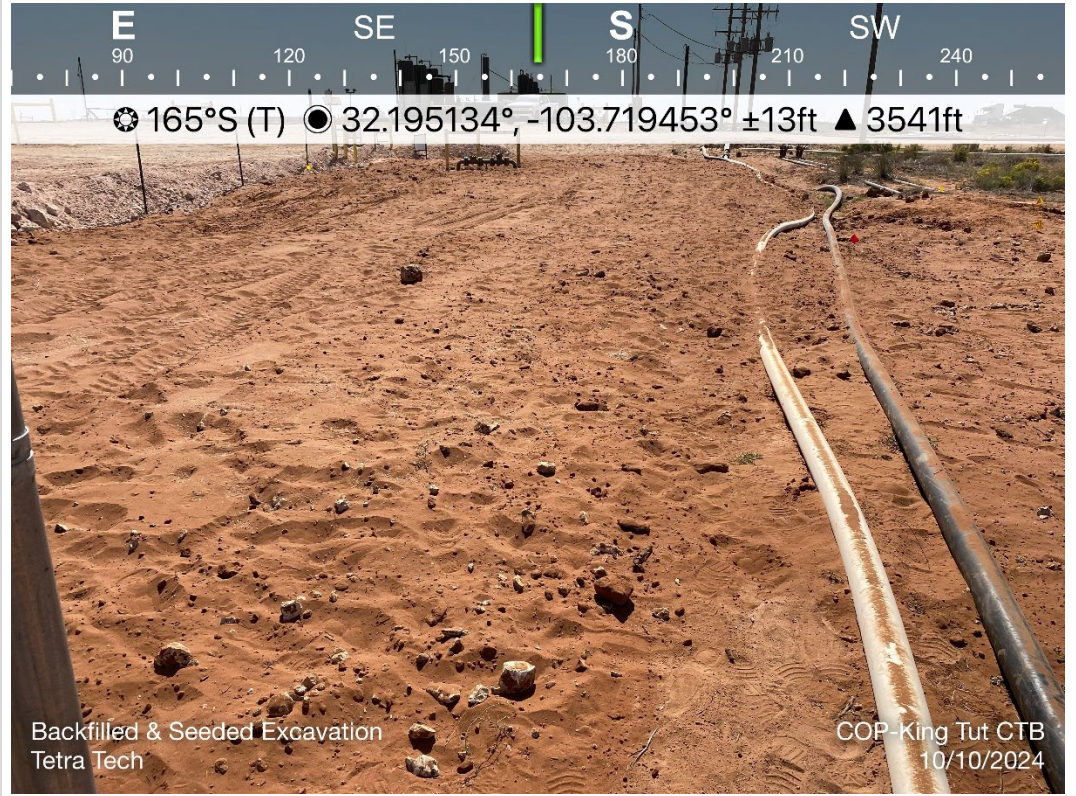
TETRA TECH, INC. PROJECT NO. 212C-MD-03643	DESCRIPTION	View south-southeast View southeast of release area. View of remedial activities.	1
	SITE NAME	Windward Federal #006H Release	10/4/2024



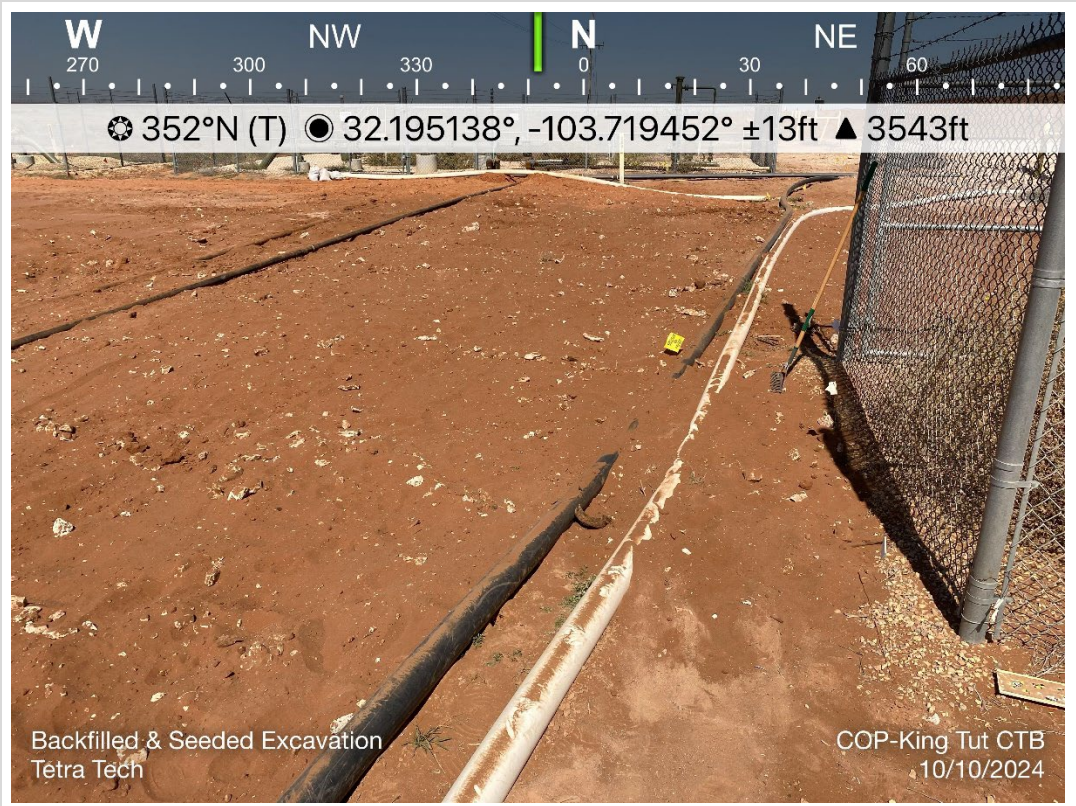
TETRA TECH, INC. PROJECT NO. 212C-MD-03643	DESCRIPTION	View northeast of release area. View of remedial activities.	2
	SITE NAME	Windward Federal #006H Release	10/4/2024



TETRA TECH, INC. PROJECT NO. 212C-MD-03643	DESCRIPTION	View southeast of release area. View of remedial activities.	3
	SITE NAME	Windward Federal #006H Release	10/4/2024



TETRA TECH, INC. PROJECT NO. 212C-MD-03643	DESCRIPTION	View south of backfilled and seeded excavation.	4
	SITE NAME	Windward Federal #006H Release	10/10/2024



TETRA TECH, INC. PROJECT NO. 212C-MD-03643	DESCRIPTION	View north of backfilled and seeded excavation.	5
	SITE NAME	Windward Federal #006H Release	10/10/2024



TETRA TECH, INC. PROJECT NO. 212C-MD-03643	DESCRIPTION	View south of backfilled and seeded excavation.	6
	SITE NAME	Windward Federal #006H Release	10/10/2024

Sante Fe Main Office
Phone: (505) 476-3441

General Information
Phone: (505) 629-6116

Online Phone Directory
<https://www.emnrd.nm.gov/ocd/contact-us>

State of New Mexico
Energy, Minerals and Natural Resources
Oil Conservation Division
1220 S. St Francis Dr.
Santa Fe, NM 87505

QUESTIONS

Action 406640

QUESTIONS

Operator: COG PRODUCTION, LLC 600 W. Illinois Ave Midland, TX 79701	OGRID: 217955
	Action Number: 406640
	Action Type: [C-141] Reclamation Report C-141 (C-141-v-Reclamation)

QUESTIONS

Prerequisites	
Incident ID (n#)	nAPP2425330502
Incident Name	NAPP2425330502 WINDWARD FEDERAL 006H @ 0
Incident Type	Release Other
Incident Status	Reclamation Report Received
Incident Facility	[fAPP2132638253] WINDWARD FED 2H - BATTERY

Location of Release Source	
Please answer all the questions in this group.	
Site Name	Windward Federal 006H
Date Release Discovered	08/27/2024
Surface Owner	Federal

Incident Details	
Please answer all the questions in this group.	
Incident Type	Release Other
Did this release result in a fire or is the result of a fire	No
Did this release result in any injuries	No
Has this release reached or does it have a reasonable probability of reaching a watercourse	No
Has this release endangered or does it have a reasonable probability of endangering public health	No
Has this release substantially damaged or will it substantially damage property or the environment	No
Is this release of a volume that is or may with reasonable probability be detrimental to fresh water	No

Nature and Volume of Release	
Material(s) released, please answer all that apply below. Any calculations or specific justifications for the volumes provided should be attached to the follow-up C-141 submission.	
Crude Oil Released (bbls) Details	Cause: Corrosion Flow Line - Production Crude Oil Released: 3 BBL Recovered: 0 BBL Lost: 3 BBL.
Produced Water Released (bbls) Details	Cause: Corrosion Flow Line - Production Produced Water Released: 3 BBL Recovered: 0 BBL Lost: 3 BBL.
Is the concentration of chloride in the produced water >10,000 mg/l	Yes
Condensate Released (bbls) Details	Not answered.
Natural Gas Vented (Mcf) Details	Not answered.
Natural Gas Flared (Mcf) Details	Not answered.
Other Released Details	Not answered.
Are there additional details for the questions above (i.e. any answer containing Other, Specify, Unknown, and/or Fire, or any negative lost amounts)	Not answered.

Sante Fe Main Office
Phone: (505) 476-3441

General Information
Phone: (505) 629-6116

Online Phone Directory
<https://www.emnrd.nm.gov/ocd/contact-us>

State of New Mexico
Energy, Minerals and Natural Resources
Oil Conservation Division
1220 S. St Francis Dr.
Santa Fe, NM 87505

QUESTIONS, Page 2

Action 406640

QUESTIONS (continued)

Operator: COG PRODUCTION, LLC 600 W. Illinois Ave Midland, TX 79701	OGRID: 217955
	Action Number: 406640
	Action Type: [C-141] Reclamation Report C-141 (C-141-v-Reclamation)

QUESTIONS

Nature and Volume of Release (continued)	
Is this a gas only submission (i.e. only significant Mcf values reported)	No, according to supplied volumes this does not appear to be a "gas only" report.
Was this a major release as defined by Subsection A of 19.15.29.7 NMAC	No
Reasons why this would be considered a submission for a notification of a major release	Unavailable.
With the implementation of the 19.15.27 NMAC (05/25/2021), venting and/or flaring of natural gas (i.e. gas only) are to be submitted on the C-129 form.	

Initial Response

The responsible party must undertake the following actions immediately unless they could create a safety hazard that would result in injury.

The source of the release has been stopped	True
The impacted area has been secured to protect human health and the environment	True
Released materials have been contained via the use of berms or dikes, absorbent pads, or other containment devices	True
All free liquids and recoverable materials have been removed and managed appropriately	True
If all the actions described above have not been undertaken, explain why	Not answered.

Per Paragraph (4) of Subsection B of 19.15.29.8 NMAC the responsible party may commence remediation immediately after discovery of a release. If remediation has begun, please prepare and attach a narrative of actions to date in the follow-up C-141 submission. If remedial efforts have been successfully completed or if the release occurred within a lined containment area (see Subparagraph (a) of Paragraph (5) of Subsection A of 19.15.29.11 NMAC), please prepare and attach all information needed for closure evaluation in the follow-up C-141 submission.

I hereby certify that the information given above is true and complete to the best of my knowledge and understand that pursuant to OCD rules and regulations all operators are required to report and/or file certain release notifications and perform corrective actions for releases which may endanger public health or the environment. The acceptance of a C-141 report by the OCD does not relieve the operator of liability should their operations have failed to adequately investigate and remediate contamination that pose a threat to groundwater, surface water, human health or the environment. In addition, OCD acceptance of a C-141 report does not relieve the operator of responsibility for compliance with any other federal, state, or local laws and/or regulations.

I hereby agree and sign off to the above statement	Name: Brittany Esparza Title: Environmental Technician Email: brittany.Esparza@ConocoPhillips.com Date: 09/09/2024
--	---

Sante Fe Main Office
Phone: (505) 476-3441

General Information
Phone: (505) 629-6116

Online Phone Directory
<https://www.emnrd.nm.gov/ocd/contact-us>

State of New Mexico
Energy, Minerals and Natural Resources
Oil Conservation Division
1220 S. St Francis Dr.
Santa Fe, NM 87505

QUESTIONS, Page 3

Action 406640

QUESTIONS (continued)

Operator: COG PRODUCTION, LLC 600 W. Illinois Ave Midland, TX 79701	OGRID: 217955
	Action Number: 406640
	Action Type: [C-141] Reclamation Report C-141 (C-141-v-Reclamation)

QUESTIONS

Site Characterization	
<i>Please answer all the questions in this group (only required when seeking remediation plan approval and beyond). This information must be provided to the appropriate district office no later than 90 days after the release discovery date.</i>	
What is the shallowest depth to groundwater beneath the area affected by the release in feet below ground surface (ft bgs)	Between 100 and 500 (ft.)
What method was used to determine the depth to ground water	NM OSE iWaters Database Search
Did this release impact groundwater or surface water	No
What is the minimum distance, between the closest lateral extents of the release and the following surface areas:	
A continuously flowing watercourse or any other significant watercourse	Greater than 5 (mi.)
Any lakebed, sinkhole, or playa lake (measured from the ordinary high-water mark)	Between 1 and 5 (mi.)
An occupied permanent residence, school, hospital, institution, or church	Greater than 5 (mi.)
A spring or a private domestic fresh water well used by less than five households for domestic or stock watering purposes	Greater than 5 (mi.)
Any other fresh water well or spring	Greater than 5 (mi.)
Incorporated municipal boundaries or a defined municipal fresh water well field	Greater than 5 (mi.)
A wetland	Between 1 and 5 (mi.)
A subsurface mine	Greater than 5 (mi.)
An (non-karst) unstable area	Greater than 5 (mi.)
Categorize the risk of this well / site being in a karst geology	Low
A 100-year floodplain	Greater than 5 (mi.)
Did the release impact areas not on an exploration, development, production, or storage site	No

Remediation Plan	
<i>Please answer all the questions that apply or are indicated. This information must be provided to the appropriate district office no later than 90 days after the release discovery date.</i>	
Requesting a remediation plan approval with this submission	Yes
<i>Attach a comprehensive report demonstrating the lateral and vertical extents of soil contamination associated with the release have been determined, pursuant to 19.15.29.11 NMAC and 19.15.29.13 NMAC.</i>	
Have the lateral and vertical extents of contamination been fully delineated	Yes
Was this release entirely contained within a lined containment area	No
Soil Contamination Sampling: (Provide the highest observable value for each, in milligrams per kilograms.)	
Chloride (EPA 300.0 or SM4500 Cl B)	2160
TPH (GRO+DRO+MRO) (EPA SW-846 Method 8015M)	9
GRO+DRO (EPA SW-846 Method 8015M)	9
BTEX (EPA SW-846 Method 8021B or 8260B)	0.2
Benzene (EPA SW-846 Method 8021B or 8260B)	0.1
<i>Per Subsection B of 19.15.29.11 NMAC unless the site characterization report includes completed efforts at remediation, the report must include a proposed remediation plan in accordance with 19.15.29.12 NMAC, which includes the anticipated timelines for beginning and completing the remediation.</i>	
On what estimated date will the remediation commence	10/03/2024
On what date will (or did) the final sampling or liner inspection occur	10/03/2024
On what date will (or was) the remediation complete(d)	10/04/2024
What is the estimated surface area (in square feet) that will be reclaimed	72
What is the estimated volume (in cubic yards) that will be reclaimed	40
What is the estimated surface area (in square feet) that will be remediated	72
What is the estimated volume (in cubic yards) that will be remediated	40
<i>These estimated dates and measurements are recognized to be the best guess or calculation at the time of submission and may (be) change(d) over time as more remediation efforts are completed.</i>	
<i>The OCD recognizes that proposed remediation measures may have to be minimally adjusted in accordance with the physical realities encountered during remediation. If the responsible party has any need to significantly deviate from the remediation plan proposed, then it should consult with the division to determine if another remediation plan submission is required.</i>	

Sante Fe Main Office
Phone: (505) 476-3441

General Information
Phone: (505) 629-6116

Online Phone Directory
<https://www.emnrd.nm.gov/ocd/contact-us>

State of New Mexico
Energy, Minerals and Natural Resources
Oil Conservation Division
1220 S. St Francis Dr.
Santa Fe, NM 87505

QUESTIONS, Page 4

Action 406640

QUESTIONS (continued)

Operator: COG PRODUCTION, LLC 600 W. Illinois Ave Midland, TX 79701	OGRID: 217955
	Action Number: 406640
	Action Type: [C-141] Reclamation Report C-141 (C-141-v-Reclamation)

QUESTIONS

Remediation Plan (continued)	
<i>Please answer all the questions that apply or are indicated. This information must be provided to the appropriate district office no later than 90 days after the release discovery date.</i>	
This remediation will (or is expected to) utilize the following processes to remediate / reduce contaminants:	
(Select all answers below that apply.)	
(Ex Situ) Excavation and off-site disposal (i.e. dig and haul, hydrovac, etc.)	Yes
Which OCD approved facility will be used for off-site disposal	TARGA NORTHERN DELAWARE, LLC. [fAPP2123031392]
OR which OCD approved well (API) will be used for off-site disposal	Not answered.
OR is the off-site disposal site, to be used, out-of-state	Not answered.
OR is the off-site disposal site, to be used, an NMED facility	Not answered.
(Ex Situ) Excavation and on-site remediation (i.e. On-Site Land Farms)	Not answered.
(In Situ) Soil Vapor Extraction	Not answered.
(In Situ) Chemical processing (i.e. Soil Shredding, Potassium Permanganate, etc.)	Not answered.
(In Situ) Biological processing (i.e. Microbes / Fertilizer, etc.)	Not answered.
(In Situ) Physical processing (i.e. Soil Washing, Gypsum, Disking, etc.)	Not answered.
Ground Water Abatement pursuant to 19.15.30 NMAC	Not answered.
OTHER (Non-listed remedial process)	Not answered.
<i>Per Subsection B of 19.15.29.11 NMAC unless the site characterization report includes completed efforts at remediation, the report must include a proposed remediation plan in accordance with 19.15.29.12 NMAC, which includes the anticipated timelines for beginning and completing the remediation.</i>	
I hereby certify that the information given above is true and complete to the best of my knowledge and understand that pursuant to OCD rules and regulations all operators are required to report and/or file certain release notifications and perform corrective actions for releases which may endanger public health or the environment. The acceptance of a C-141 report by the OCD does not relieve the operator of liability should their operations have failed to adequately investigate and remediate contamination that pose a threat to groundwater, surface water, human health or the environment. In addition, OCD acceptance of a C-141 report does not relieve the operator of responsibility for compliance with any other federal, state, or local laws and/or regulations.	
I hereby agree and sign off to the above statement	Name: Brittany Esparza Title: Environmental Technician Email: brittany.Esparza@ConocoPhillips.com Date: 11/26/2024
<i>The OCD recognizes that proposed remediation measures may have to be minimally adjusted in accordance with the physical realities encountered during remediation. If the responsible party has any need to significantly deviate from the remediation plan proposed, then it should consult with the division to determine if another remediation plan submission is required.</i>	

Sante Fe Main Office
Phone: (505) 476-3441

General Information
Phone: (505) 629-6116

Online Phone Directory
<https://www.emnrd.nm.gov/ocd/contact-us>

State of New Mexico
Energy, Minerals and Natural Resources
Oil Conservation Division
1220 S. St Francis Dr.
Santa Fe, NM 87505

QUESTIONS, Page 5

Action 406640

QUESTIONS (continued)

Operator: COG PRODUCTION, LLC 600 W. Illinois Ave Midland, TX 79701	OGRID: 217955
	Action Number: 406640
	Action Type: [C-141] Reclamation Report C-141 (C-141-v-Reclamation)

QUESTIONS

Deferral Requests Only	
Only answer the questions in this group if seeking a deferral upon approval this submission. Each of the following items must be confirmed as part of any request for deferral of remediation.	
Requesting a deferral of the remediation closure due date with the approval of this submission	No

Sante Fe Main Office
Phone: (505) 476-3441

General Information
Phone: (505) 629-6116

Online Phone Directory
<https://www.emnrd.nm.gov/ocd/contact-us>

State of New Mexico
Energy, Minerals and Natural Resources
Oil Conservation Division
1220 S. St Francis Dr.
Santa Fe, NM 87505

QUESTIONS, Page 6

Action 406640

QUESTIONS (continued)

Operator: COG PRODUCTION, LLC 600 W. Illinois Ave Midland, TX 79701	OGRID: 217955
	Action Number: 406640
	Action Type: [C-141] Reclamation Report C-141 (C-141-v-Reclamation)

QUESTIONS

Sampling Event Information	
Last sampling notification (C-141N) recorded	388676
Sampling date pursuant to Subparagraph (a) of Paragraph (1) of Subsection D of 19.15.29.12 NMAC	10/03/2024
What was the (estimated) number of samples that were to be gathered	4
What was the sampling surface area in square feet	369

Remediation Closure Request

Only answer the questions in this group if seeking remediation closure for this release because all remediation steps have been completed.

Requesting a remediation closure approval with this submission	Yes
Have the lateral and vertical extents of contamination been fully delineated	Yes
Was this release entirely contained within a lined containment area	No
All areas reasonably needed for production or subsequent drilling operations have been stabilized, returned to the sites existing grade, and have a soil cover that prevents ponding of water, minimizing dust and erosion	Yes
What was the total surface area (in square feet) remediated	72
What was the total volume (cubic yards) remediated	40
All areas not reasonably needed for production or subsequent drilling operations have been reclaimed to contain a minimum of four feet of non-waste contain earthen material with concentrations less than 600 mg/kg chlorides, 100 mg/kg TPH, 50 mg/kg BTEX, and 10 mg/kg Benzene	Yes
What was the total surface area (in square feet) reclaimed	72
What was the total volume (in cubic yards) reclaimed	40
Summarize any additional remediation activities not included by answers (above)	na

The responsible party must attach information demonstrating they have complied with all applicable closure requirements and any conditions or directives of the OCD. This demonstration should be in the form of a comprehensive report (in .pdf format) including a scaled site map, sampling diagrams, relevant field notes, photographs of any excavation prior to backfilling, laboratory data including chain of custody documents of final sampling, and a narrative of the remedial activities. Refer to 19.15.29.12 NMAC.

I hereby certify that the information given above is true and complete to the best of my knowledge and understand that pursuant to OCD rules and regulations all operators are required to report and/or file certain release notifications and perform corrective actions for releases which may endanger public health or the environment. The acceptance of a C-141 report by the OCD does not relieve the operator of liability should their operations have failed to adequately investigate and remediate contamination that pose a threat to groundwater, surface water, human health or the environment. In addition, OCD acceptance of a C-141 report does not relieve the operator of responsibility for compliance with any other federal, state, or local laws and/or regulations. The responsible party acknowledges they must substantially restore, reclaim, and re-vegetate the impacted surface area to the conditions that existed prior to the release or their final land use in accordance with 19.15.29.13 NMAC including notification to the OCD when reclamation and re-vegetation are complete.

I hereby agree and sign off to the above statement	Name: Brittany Esparza Title: Environmental Technician Email: brittany.Esparza@ConocoPhillips.com Date: 11/26/2024
--	--

Sante Fe Main Office
Phone: (505) 476-3441

General Information
Phone: (505) 629-6116

Online Phone Directory
<https://www.emnrd.nm.gov/ocd/contact-us>

State of New Mexico
Energy, Minerals and Natural Resources
Oil Conservation Division
1220 S. St Francis Dr.
Santa Fe, NM 87505

QUESTIONS, Page 7

Action 406640

QUESTIONS (continued)

Operator: COG PRODUCTION, LLC 600 W. Illinois Ave Midland, TX 79701	OGRID: 217955
	Action Number: 406640
	Action Type: [C-141] Reclamation Report C-141 (C-141-v-Reclamation)

QUESTIONS

Reclamation Report	
<i>Only answer the questions in this group if all reclamation steps have been completed.</i>	
Requesting a reclamation approval with this submission	Yes
What was the total reclamation surface area (in square feet) for this site	72
What was the total volume of replacement material (in cubic yards) for this site	40
<i>Per Paragraph (1) of Subsection D of 19.15.29.13 NMAC the reclamation must contain a minimum of four feet of non-waste containing, uncontaminated, earthen material with chloride concentrations less than 600 mg/kg as analyzed by EPA Method 300.0, or other test methods approved by the division. The soil cover must include a top layer, which is either the background thickness of topsoil or one foot of suitable material to establish vegetation at the site, whichever is greater.</i>	
Is the soil top layer complete and is it suitable material to establish vegetation	Yes
On what (estimated) date will (or was) the reseeding commence(d)	10/10/2024
Summarize any additional reclamation activities not included by answers (above)	na
<i>The responsible party must attach information demonstrating they have complied with all applicable reclamation requirements and any conditions or directives of the OCD. This demonstration should be in the form of attachments (in .pdf format) including a scaled site map, any proposed reseeding plans or relevant field notes, photographs of reclaimed area, and a narrative of the reclamation activities. Refer to 19.15.29.13 NMAC.</i>	
I hereby certify that the information given above is true and complete to the best of my knowledge and understand that pursuant to OCD rules and regulations all operators are required to report and/or file certain release notifications and perform corrective actions for releases which may endanger public health or the environment. The acceptance of a C-141 report by the OCD does not relieve the operator of liability should their operations have failed to adequately investigate and remediate contamination that pose a threat to groundwater, surface water, human health or the environment. In addition, OCD acceptance of a C-141 report does not relieve the operator of responsibility for compliance with any other federal, state, or local laws and/or regulations. The responsible party acknowledges they must substantially restore, reclaim, and re-vegetate the impacted surface area to the conditions that existed prior to the release or their final land use in accordance with 19.15.29.13 NMAC including notification to the OCD when reclamation and re-vegetation are complete.	
I hereby agree and sign off to the above statement	Name: Brittany Esparza Title: Environmental Technician Email: brittany.Esparza@ConocoPhillips.com Date: 11/26/2024

Sante Fe Main Office
Phone: (505) 476-3441

General Information
Phone: (505) 629-6116

Online Phone Directory
<https://www.emnrd.nm.gov/ocd/contact-us>

State of New Mexico
Energy, Minerals and Natural Resources
Oil Conservation Division
1220 S. St Francis Dr.
Santa Fe, NM 87505

QUESTIONS, Page 8

Action 406640

QUESTIONS (continued)

Operator: COG PRODUCTION, LLC 600 W. Illinois Ave Midland, TX 79701	OGRID: 217955
	Action Number: 406640
	Action Type: [C-141] Reclamation Report C-141 (C-141-v-Reclamation)

QUESTIONS

Revegetation Report	
<i>Only answer the questions in this group if all surface restoration, reclamation and re-vegetation obligations have been satisfied.</i>	
Requesting a restoration complete approval with this submission	No
<i>Per Paragraph (4) of Subsection (D) of 19.15.29.13 NMAC for any major or minor release containing liquids, the responsible party must notify the division when reclamation and re-vegetation are complete.</i>	

Sante Fe Main Office
Phone: (505) 476-3441

General Information
Phone: (505) 629-6116

Online Phone Directory
<https://www.emnrd.nm.gov/ocd/contact-us>

State of New Mexico
Energy, Minerals and Natural Resources
Oil Conservation Division
1220 S. St Francis Dr.
Santa Fe, NM 87505

CONDITIONS

Action 406640

CONDITIONS

Operator: COG PRODUCTION, LLC 600 W. Illinois Ave Midland, TX 79701	OGRID: 217955
	Action Number: 406640
	Action Type: [C-141] Reclamation Report C-141 (C-141-v-Reclamation)

CONDITIONS

Created By	Condition	Condition Date
nvez	None	3/12/2025