



SITE INFORMATION

Closure Report
Copperhead 31 Federal Com 001H (04.16.24)
Eddy County, New Mexico
Incident ID: nAPP2410932444
Unit H Sec 31 T26S R29E
32.001891°, -104.016572°

Crude Oil Release
Point of Release: Equipment Malfunction
Release Date: 04.16.2024
Volume Released: 132.4491 barrels of Crude Oil
Volume Recovered: 130 barrels of Crude Oil

CARMONA RESOURCES



Prepared for:
Concho Operating, LLC
15 West London Road
Loving, New Mexico 88256

Prepared by:
Carmona Resources, LLC
310 West Wall Street
Suite 500
Midland, Texas 79701



TABLE OF CONTENTS

1.0 SITE INFORMATION AND BACKGROUND

2.0 SITE CHARACTERIZATION AND GROUNDWATER

3.0 NMAC REGULATORY CRITERIA

4.0 SITE ASSESSMENT ACTIVITIES

5.0 REMEDIATION ACTIVITIES

6.0 LINER INSPECTION ACTIVITIES

7.0 CONCLUSIONS

FIGURES

FIGURE 1	OVERVIEW	FIGURE 2	TOPOGRAPHIC
FIGURE 3	SAMPLE LOCATION	FIGURE 4	EXCAVATION
FIGURE 5	SECONDARY CONTAINMENT MAP		

APPENDICES

APPENDIX A	TABLES
APPENDIX B	PHOTOS
APPENDIX C	N.O.R. AND C-141/NMOCD CORRESPONDENCE
APPENDIX D	SITE CHARACTERIZATION AND GROUNDWATER
APPENDIX E	LABORATORY REPORTS

CARMONA RESOURCES



July 9, 2025

Mike Bratcher
District Supervisor
Oil Conservation Division, District 2
811 S. First Street
Artesia, New Mexico 88210

**Re: Closure Report
Copperhead 31 Federal 001H (04.16.24)
Concho Operating, LLC
Incident # nAPP2410932444
Site Location: Unit H, S31, T26S, R29E
(Lat 32.001891°, Long -104.016572°)
Eddy County, New Mexico**

Mr. Bratcher:

On behalf of Concho Operating, LLC. (COG), Carmona Resources, LLC has prepared this letter to document site activities for the Copperhead 31 Federal 001H (04.16.24). The site is located at 32.001891°, -104.016572° within Unit H, S31, T26S, and R29E, in Eddy County, New Mexico (Figures 1 and 2).

1.0 Site Information and Background

Based on the Notice of Release form obtained from the New Mexico Oil Conservation Division (NMOCD), the release was discovered on April 16, 2024, due to equipment failure. It resulted in approximately one hundred thirty-two point four four nine one (132.4491) barrels of crude oil, with one hundred thirty (130) barrels recovered. The area of focus occurred on the pad and is shown in Figure 3. The Notice of Release form is attached in Appendix C.

2.0 Site Characterization and Groundwater

The site is located within a medium karst area. Based on a review of the New Mexico Office of State Engineers and USGS databases, no known water sources are within a 0.50-mile radius of the location. The nearest identified well is located approximately 2.91 miles Northeast of the in S22, T26S, R29E and was drilled in 1958. The well has a reported depth to groundwater of 68.74' below ground surface (ft bgs). A copy of the associated Summary report is attached in Appendix D.

3.0 NMAC Regulatory Criteria

Per the NMOCD regulatory criteria established in 19.15.29.12, the following criteria were utilized in assessing the site.

- Benzene: 10 milligrams per kilogram (mg/kg).
- Benzene, toluene, ethylbenzene, and total xylenes (BTEX): 50 mg/kg.
- TPH: 100 mg/kg (GRO + DRO + MRO).
- Chloride: 600 mg/kg.

310 West Wall Street, Suite 500
Midland, Texas 79701
432.813.1992



4.0 Site Assessment Activities

On May 8, 2024, Carmona Resources, LLC performed site assessment activities to evaluate soil impacts stemming from the release. A total of three (3) sample point (S-1 through S-3) and four (4) horizontal sample points (H-1 through H-4) were advanced to depths ranging from the surface to 3.0' bgs inside and surrounding the release area to assess the vertical and horizontal extent of the contamination. Refer to Figure 3 for the initial sample locations. For chemical analysis, the soil samples were collected and placed directly into laboratory-provided sample containers, stored on ice, and transported under the proper chain-of-custody protocol to Cardinal Laboratory in Hobbs, New Mexico. The samples were analyzed for total petroleum hydrocarbons (TPH) by EPA method 8015, modified benzene, toluene, ethylbenzene, and xylenes (BTEX) by EPA Method 8021B, and chloride by EPA method 4500. The laboratory reports, including analytical methods, results, and chain-of-custody documents, are attached in Appendix E.

5.0 Remediation Activities

Carmona Resources personnel were on site to guide the remediation activities, collect confirmation samples, and document backfill activities. Before collecting composite confirmation samples, the NMOCD division office was notified via email on May 21, 2024, per Subsection D of 19.15.29.12 NMAC. See Appendix C for the sampling notification. Sidewalls in the area of H-4 were extended to ensure horizontal bounding of the area of concern. A total of eight (8) confirmation floor samples (CS-1 and CS-8) and ten (10) sidewall samples (SW-1 through SW-10) were collected every 200 square feet to ensure the proper removal of the contaminated soils. All collected samples were analyzed for TPH analysis by EPA method 8015 modified, BTEX by EPA Method 8021B, and chloride by EPA method 4500. Copies of laboratory analysis and chain-of-custody documentation are included in Appendix E. The excavation depths and confirmation sample locations are displayed in Figure 4.

All final confirmation samples were below the regulatory requirements for TPH, BTEX, and chloride. Refer to Table 2.

Once the remediation activities were completed, the excavated areas were backfilled with clean material to surface grade. The material utilized for backfill was sourced from the R360 – Red Bluff Pit. The pit sample was analyzed for TPH analysis by EPA method 8015 modified, BTEX by EPA Method 8021B, and chloride by EPA method 4500. Copies of laboratory analysis and chain-of-custody documentation are included in Appendix E.

Approximately 130 cubic yards of material were excavated and transported offsite for proper disposal.

6.0 Liner Inspection Activities

Before conducting the liner inspection, a crew was onsite to remove all freestanding fluids within the lined facility. Once the plastic liner was thoroughly cleaned, the NMOCD division office was notified via NMOCD portal on May 21, 2024, per Subsection D of 19.15.29.12 NMAC. See Appendix C for the NMOCD correspondence prior to performing the liner inspection. On May 23, 2024, Carmona Resources, LLC conducted liner inspection activities to assess the liner's integrity within the facility and determined the liner was intact with no integrity issues. Refer to the Photolog for details.

CARMONA RESOURCES



7.0 Conclusions

Based on the assessment results and the analytical data, no further actions are required at the site. COG formally requests the closure of this incident. If you have any questions regarding this report or need additional information, please get in touch with us at 432-813-1992.

Sincerely,

Carmona Resources, LLC

Conner Moehring
Environmental Manager

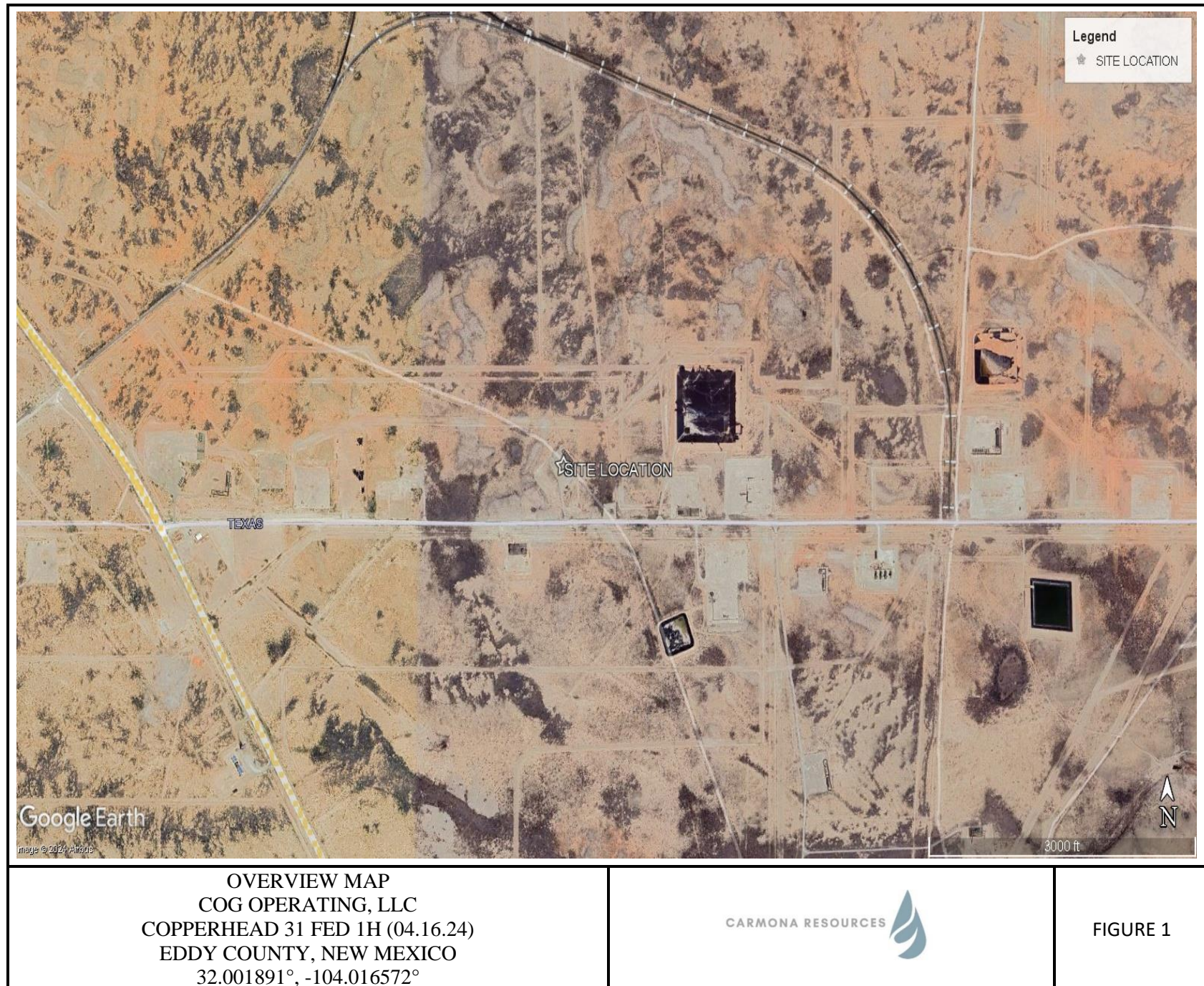
Stephen Reyes
Environmental Engineer

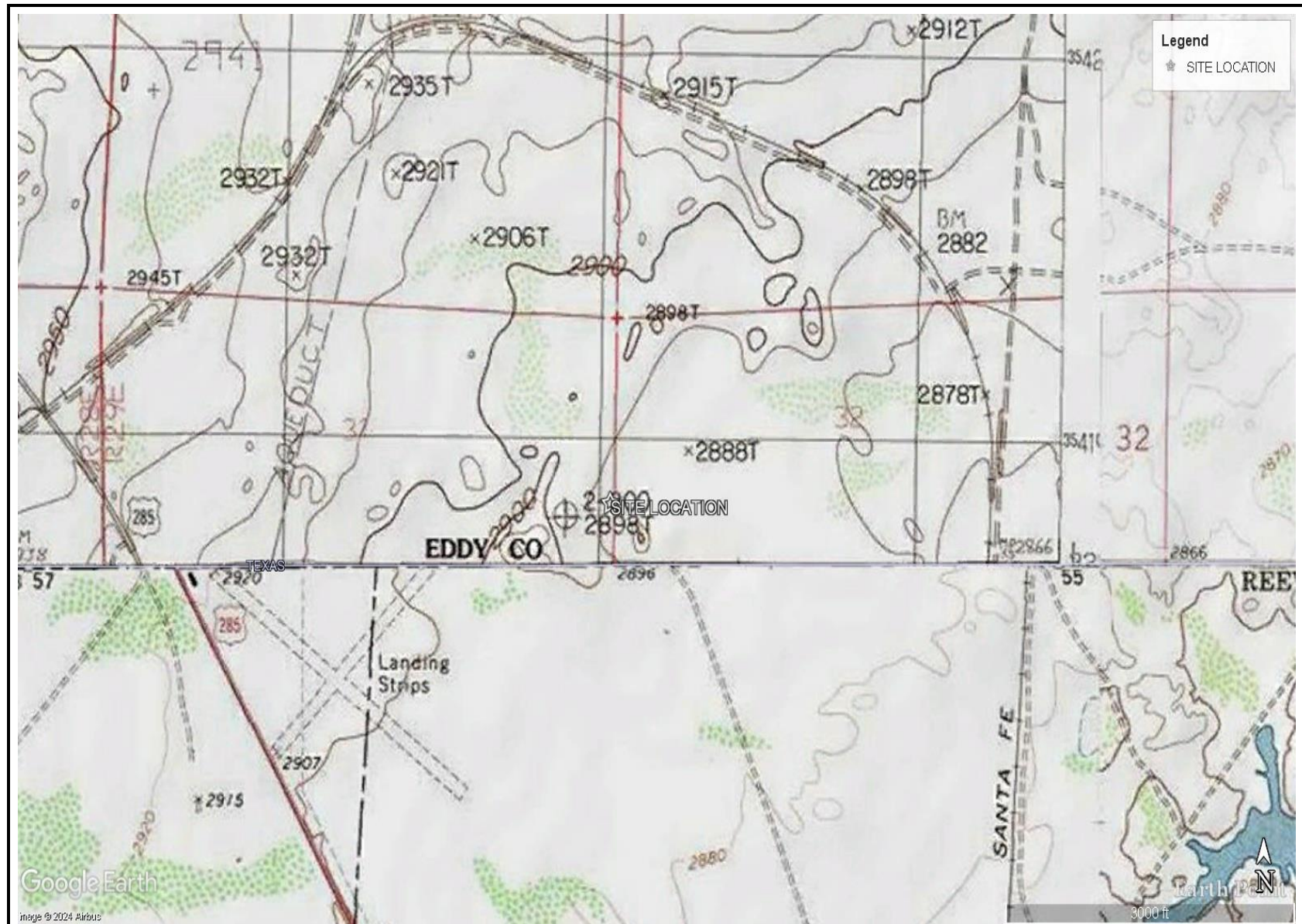
310 West Wall Street, Suite 500
Midland, Texas 79701
432.813.1992

FIGURES

CARMONA RESOURCES



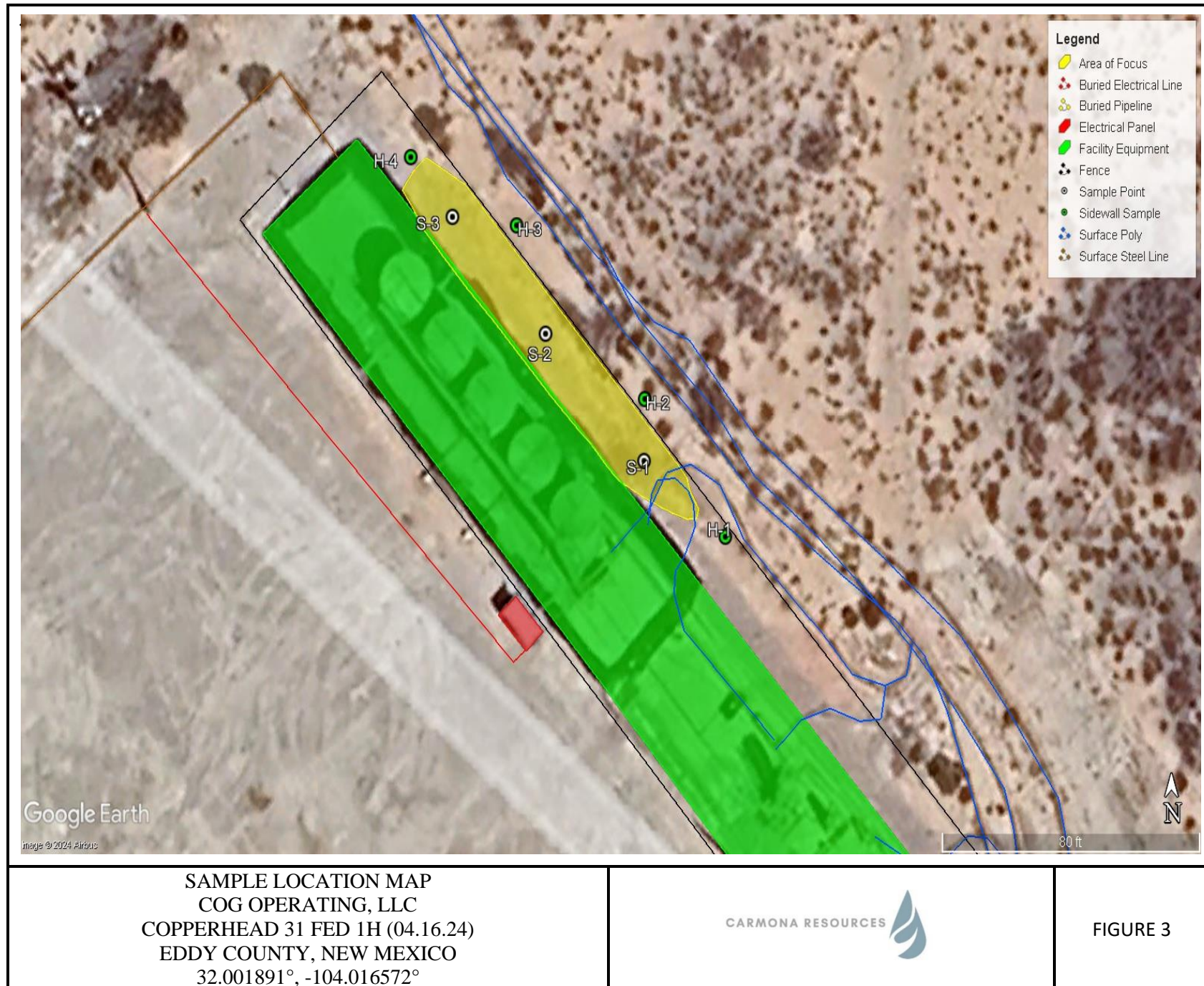


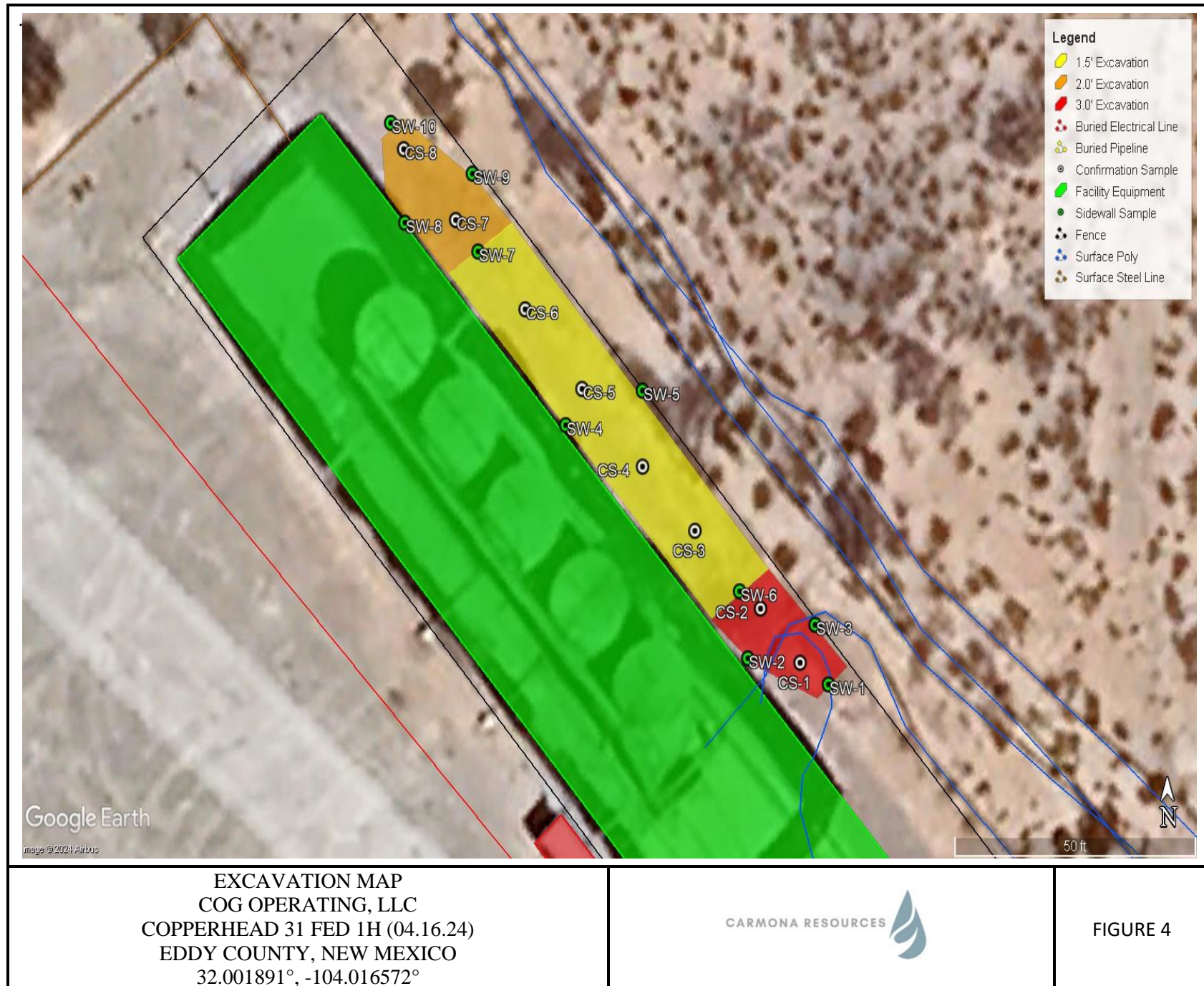


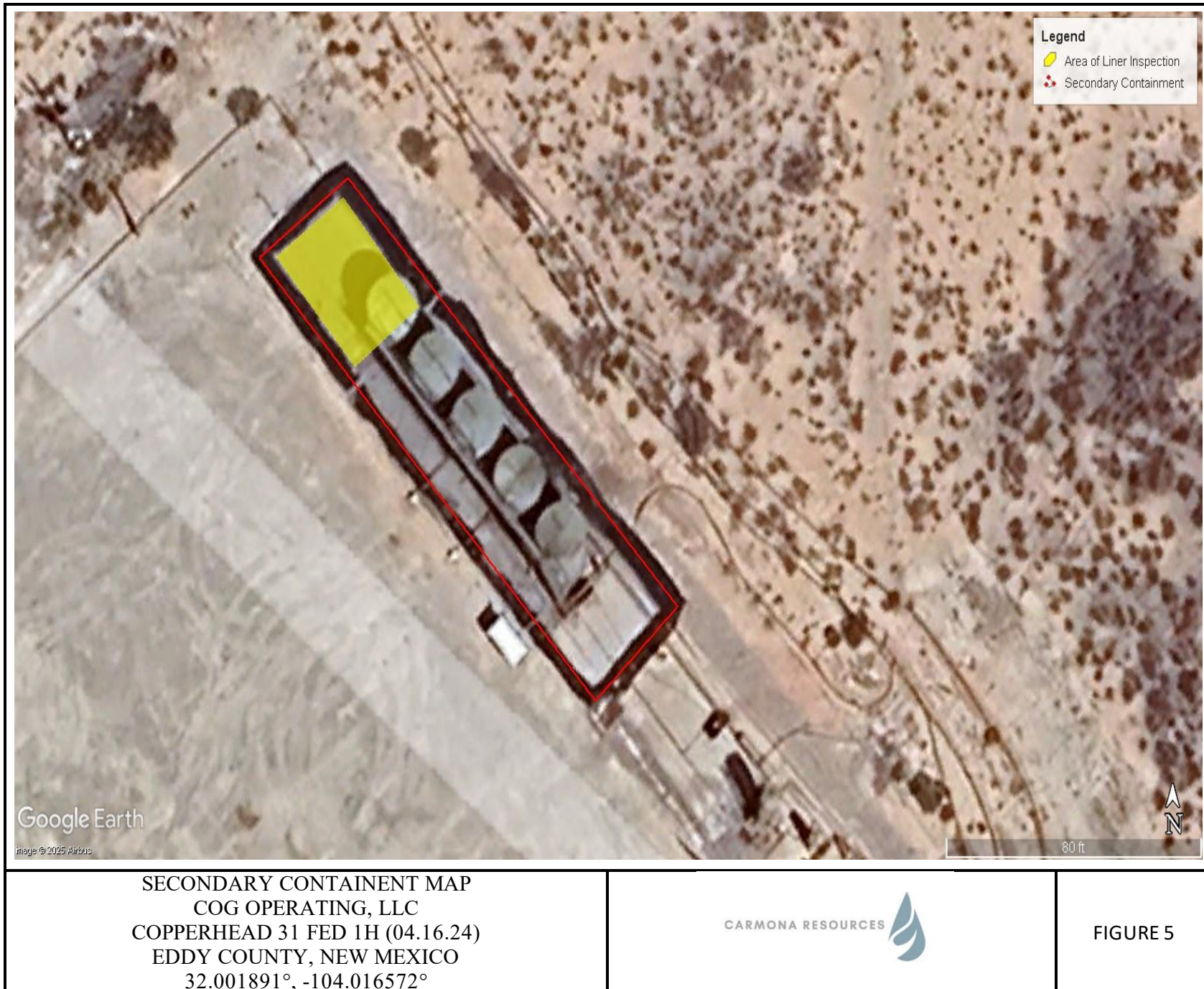
TOPOGRAPHIC MAP
COG OPERATING, LLC
COPPERHEAD 31 FED 1H (04.16.24)
EDDY COUNTY, NEW MEXICO
32.001891°, -104.016572°



FIGURE 2







APPENDIX A

CARMONA RESOURCES



Table 1
COG Operating
COPPERHEAD 31 FED 1H
Eddy County, New Mexico

Sample ID	Date	Depth (ft)	TPH (mg/kg)				Benzene (mg/kg)	Toluene (mg/kg)	Ethlybenzene (mg/kg)	Xylene (mg/kg)	Total BTEX (mg/kg)	Chloride (mg/kg)
			GRO	DRO	MRO	Total						
S-1	5/8/2024	0-1	<10.0	<10.0	<10.0	<10.0	<0.050	<0.050	<0.050	<0.150	<0.300	240
	"	1.5	<10.0	<10.0	<10.0	<10.0	<0.050	<0.050	<0.050	<0.150	<0.300	1,040
	"	2.0	<10.0	<10.0	<10.0	<10.0	<0.050	<0.050	<0.050	<0.150	<0.300	992
	"	3.0	<10.0	<10.0	<10.0	<10.0	<0.050	<0.050	<0.050	<0.150	<0.300	432
S-2	5/8/2024	0-1	<10.0	334	83.7	417.7	<0.050	<0.050	<0.050	<0.150	<0.300	448
	"	1.5	<10.0	<10.0	<10.0	<10.0	<0.050	<0.050	<0.050	<0.150	<0.300	96.0
	"	2.0	<10.0	<10.0	<10.0	<10.0	<0.050	<0.050	<0.050	<0.150	<0.300	384
	"	3.0	<10.0	<10.0	<10.0	<10.0	<0.050	<0.050	<0.050	<0.150	<0.300	480
S-3	5/8/2024	0-1	<10.0	230	33.6	263.6	<0.050	<0.050	<0.050	<0.150	<0.300	128
	"	1.5	<10.0	<10.0	<10.0	<10.0	<0.050	<0.050	<0.050	<0.150	<0.300	528
	"	2.0	<10.0	<10.0	<10.0	<10.0	<0.050	<0.050	<0.050	<0.150	<0.300	65.6
H-1	5/8/2024	0-0.5	<10.0	<10.0	<10.0	<10.0	<0.050	<0.050	<0.050	<0.150	<0.300	64.0
H-2	5/8/2024	0-0.5	<10.0	17.9	<10.0	17.9	<0.050	<0.050	<0.050	<0.150	<0.300	32.0
H-3	5/8/2024	0-0.5	<10.0	<10.0	<10.0	<10.0	<0.050	<0.050	<0.050	<0.150	<0.300	336
H-4	5/8/2024	0-0.5	<10.0	2,500	1,060	3,560	<0.050	<0.050	<0.050	<0.150	<0.300	368
Regulatory Criteria^A						100 mg/kg	10 mg/kg				50 mg/kg	600 mg/kg

(-) Not Analyzed

^A – Table 1 - 19.15.29 NMAC

mg/kg - milligram per kilogram

TPH- Total Petroleum Hydrocarbons

ft-feet

(S) Sample Point

(H) Horizontal Sample

 Removed

Table 2
COG Operating
Copperhead 31 Fed 1H
Eddy County, New Mexico

Sample ID	Date	Depth (ft)	TPH (mg/kg)				Benzene (mg/kg)	Toluene (mg/kg)	Ethlybenzene (mg/kg)	Xylene (mg/kg)	Total BTEX (mg/kg)	Chloride (mg/kg)
			GRO	DRO	MRO	Total						
CS-1	5/23/2024	3.0	<10.0	<10.0	<10.0	<10.0	<0.050	<0.050	<0.050	<0.150	<0.300	48.0
CS-2	5/23/2024	3.0	<10.0	<10.0	<10.0	<10.0	<0.050	<0.050	<0.050	<0.150	<0.300	32.0
CS-3	5/23/2024	1.5	<10.0	<10.0	<10.0	<10.0	<0.050	<0.050	<0.050	<0.150	<0.300	48.0
CS-4	5/23/2024	1.5	<10.0	<10.0	<10.0	<10.0	<0.050	<0.050	<0.050	<0.150	<0.300	48.0
CS-5	5/23/2024	1.5	<10.0	<10.0	<10.0	<10.0	<0.050	<0.050	<0.050	<0.150	<0.300	32.0
CS-6	5/23/2024	1.5	<10.0	<10.0	<10.0	<10.0	<0.050	<0.050	<0.050	<0.150	<0.300	32.0
CS-7	5/23/2024	2.0	<10.0	<10.0	<10.0	<10.0	<0.050	<0.050	<0.050	<0.150	<0.300	32.0
CS-8	5/23/2024	2.0	<10.0	<10.0	<10.0	<10.0	<0.050	<0.050	<0.050	<0.150	<0.300	32.0
SW-1	5/23/2024	3.0	<10.0	<10.0	<10.0	<10.0	<0.050	<0.050	<0.050	<0.150	<0.300	32.0
SW-2	5/23/2024	3.0	<10.0	<10.0	<10.0	<10.0	<0.050	<0.050	<0.050	<0.150	<0.300	48.0
SW-3	5/23/2024	3.0	<10.0	<10.0	<10.0	<10.0	<0.050	<0.050	<0.050	<0.150	<0.300	48.0
SW-4	5/23/2024	1.5	<10.0	<10.0	<10.0	<10.0	<0.050	<0.050	<0.050	<0.150	<0.300	32.0
SW-5	5/23/2024	1.5	<10.0	<10.0	<10.0	<10.0	<0.050	<0.050	<0.050	<0.150	<0.300	16.0
SW-6	5/23/2024	1.5	<10.0	<10.0	<10.0	<10.0	<0.050	<0.050	<0.050	<0.150	<0.300	48.0
SW-7	5/23/2024	0.5	<10.0	<10.0	<10.0	<10.0	<0.050	<0.050	<0.050	<0.150	<0.300	32.0
SW-8	5/23/2024	2.0	<10.0	<10.0	<10.0	<10.0	<0.050	<0.050	<0.050	<0.150	<0.300	48.0
SW-9	5/23/2024	2.0	<10.0	<10.0	<10.0	<10.0	<0.050	<0.050	<0.050	<0.150	<0.300	32.0
SW-10	5/23/2024	2.0	<10.0	<10.0	<10.0	<10.0	<0.050	<0.050	<0.050	<0.150	<0.300	32.0
Red Bluff Pit	5/24/2024	-	<10.0	<10.0	<10.0	<10.0	<0.050	<0.050	<0.050	<0.150	<0.300	48.0
Regulatory Criteria^A						100 mg/kg	10 mg/kg				50 mg/kg	600 mg/kg

(-) Not Analyzed

^A – Table 1 - 19.15.29 NMAC

mg/kg - milligram per kilogram

TPH- Total Petroleum Hydrocarbons

ft-feet

(CS) Confirmation Sample

(SW) Sidewall Sample

APPENDIX B

CARMONA RESOURCES



PHOTOGRAPHIC LOG

COG Operating

Photograph No. 1

Facility: Copperhead 31 Federal Com 001H
(04.16.24)

County: Eddy County, New Mexico

Description:

View Southeast, area of Confirmation Samples (1-6).



Photograph No. 2

Facility: Copperhead 31 Federal Com 001H
(04.16.24)

County: Eddy County, New Mexico

Description:

View Northwest, area of Confirmation Samples (5-8).



Photograph No. 3

Facility: Copperhead 31 Federal Com 001H
(04.16.24)

County: Eddy County, New Mexico

Description:

View Southeast after excavation is complete and the area backfilled.



PHOTOGRAPHIC LOG

COG Operating

Photograph No. 4

Facility: Copperhead 31 Federal Com 001H
(04.16.24)

County: Eddy County, New Mexico

Description:

View East, area of liner inspection. (Red outline is the area of the liner inspection).



Photograph No. 5

Facility: Copperhead 31 Federal Com 001H
(04.16.24)

County: Eddy County, New Mexico

Description:

View Northwest, area of liner inspection. (Red outline is the area of the liner inspection).



APPENDIX C

CARMONA RESOURCES



District I
1625 N. French Dr., Hobbs, NM 88240
District II
811 S. First St., Artesia, NM 88210
District III
1000 Rio Brazos Road, Aztec, NM 87410
District IV
1220 S. St. Francis Dr., Santa Fe, NM 87505

State of New Mexico
Energy Minerals and Natural
Resources Department

Oil Conservation Division
1220 South St. Francis Dr.
Santa Fe, NM 87505

Form C-141
Revised August 24, 2018
Submit to appropriate OCD District office

Incident ID	
District RP	
Facility ID	
Application ID	

Release Notification

Responsible Party

Responsible Party	OGRID
Contact Name	Contact Telephone
Contact email	Incident # (assigned by OCD)
Contact mailing address	

Location of Release Source

Latitude _____ Longitude _____
(NAD 83 in decimal degrees to 5 decimal places)

Site Name	Site Type
Date Release Discovered	API# (if applicable)

Unit Letter	Section	Township	Range	County

Surface Owner: ☐ State ☐ Federal ☐ Tribal ☐ Private (Name: _____)

Nature and Volume of Release

Material(s) Released (Select all that apply and attach calculations or specific justification for the volumes provided below)

<input type="checkbox"/> Crude Oil	Volume Released (bbls)	Volume Recovered (bbls)
<input type="checkbox"/> Produced Water	Volume Released (bbls)	Volume Recovered (bbls)
	Is the concentration of dissolved chloride in the produced water >10,000 mg/l?	<input type="checkbox"/> Yes <input type="checkbox"/> No
<input type="checkbox"/> Condensate	Volume Released (bbls)	Volume Recovered (bbls)
<input type="checkbox"/> Natural Gas	Volume Released (Mcf)	Volume Recovered (Mcf)
<input type="checkbox"/> Other (describe)	Volume/Weight Released (provide units)	Volume/Weight Recovered (provide units)

Cause of Release

Oil Conservation Division

Incident ID	
District RP	
Facility ID	
Application ID	

Was this a major release as defined by 19.15.29.7(A) NMAC? <input type="checkbox"/> Yes <input type="checkbox"/> No	If YES, for what reason(s) does the responsible party consider this a major release?
If YES, was immediate notice given to the OCD? By whom? To whom? When and by what means (phone, email, etc)?	

Initial Response

The responsible party must undertake the following actions immediately unless they could create a safety hazard that would result in injury

<input type="checkbox"/> The source of the release has been stopped.	
<input type="checkbox"/> The impacted area has been secured to protect human health and the environment.	
<input type="checkbox"/> Released materials have been contained via the use of berms or dikes, absorbent pads, or other containment devices.	
<input type="checkbox"/> All free liquids and recoverable materials have been removed and managed appropriately.	
If all the actions described above have <u>not</u> been undertaken, explain why:	
Per 19.15.29.8 B. (4) NMAC the responsible party may commence remediation immediately after discovery of a release. If remediation has begun, please attach a narrative of actions to date. If remedial efforts have been successfully completed or if the release occurred within a lined containment area (see 19.15.29.11(A)(5)(a) NMAC), please attach all information needed for closure evaluation.	
I hereby certify that the information given above is true and complete to the best of my knowledge and understand that pursuant to OCD rules and regulations all operators are required to report and/or file certain release notifications and perform corrective actions for releases which may endanger public health or the environment. The acceptance of a C-141 report by the OCD does not relieve the operator of liability should their operations have failed to adequately investigate and remediate contamination that pose a threat to groundwater, surface water, human health or the environment. In addition, OCD acceptance of a C-141 report does not relieve the operator of responsibility for compliance with any other federal, state, or local laws and/or regulations.	
Printed Name _____	Title: _____
Signature: <u> Battani Espinoza </u>	Date: _____
email: _____	Telephone: _____
<u>OCD Only</u>	
Received by: _____	Date: _____

Spill Calculation - Subsurface Spill - Rectangle								Remediation Recommendation	
Received by OCD: 7/23/2025 12:58:18 PM								Page 21 of 90	
Convert Irregular shape into a series of rectangles	Length (ft.)	Width (ft.)	Average Depth (in.)	On/Off Pad (dropdown)	Soil Spilled-Fluid Saturation (%)	Estimated volume of each area (bbl.)	Total Estimated Volume of Spill (bbl.)	Total Estimated Contaminated Soil, uncompacted, 25% (yd³.)	Current Rule of Thumb RMR Handover Volume, (yd³.)
Rectangle A	93.0	14.0	0.5	On-Pad✓	10.50%	9.66	1.01	2.51	750
Rectangle B				✓		0.00		0.00	
Rectangle C				✓		0.00		0.00	
Rectangle D				✓		0.00		0.00	
Rectangle E				✓		0.00		0.00	
Rectangle F				✓		0.00		0.00	
Rectangle G				✓		0.00		0.00	
Rectangle H				✓		0.00		0.00	
Rectangle I				✓		0.00		0.00	
Rectangle J				✓		0.00		0.00	
Total Subsurface Volume Released:							1.0139	2.51	BU
Released to Imaging: 8/28/2025 1:49:42 PM									

Spill Calculation - On-Pad Surface Pool Spill									
Received by OCD: 7/23/2025 12:58:18 PM									
Convert Irregular shape into a series of rectangles	Length (ft.)	Width (ft.)	Average Depth (in.)	Estimated <u>Pool</u> Area (sq. ft.)	Estimated volume of each pool area (bbl.)				
Rectangle A	142	26	6.0	3692.00	131.44				
Rectangle B				0.00	0.00				
Rectangle C				0.00	0.00				
Rectangle D				0.00	0.00				
Rectangle E				0.00	0.00				
Rectangle F				0.00	0.00				
Rectangle G				0.00	0.00				
Rectangle H				0.00	0.00				
Rectangle I				0.00	0.00				
Rectangle J				0.00	0.00				
Total Volume Released to Lined Secondary Containment:						131.4352		0.0000	131.4352
Released to Imaging: 8/28/2025 1:49:42 PM									

District I
1625 N. French Dr., Hobbs, NM 88240
Phone:(575) 393-6161 Fax:(575) 393-0720

District II
811 S. First St., Artesia, NM 88210
Phone:(575) 748-1283 Fax:(575) 748-9720

District III
1000 Rio Brazos Rd., Aztec, NM 87410
Phone:(505) 334-6178 Fax:(505) 334-6170

District IV
1220 S. St Francis Dr., Santa Fe, NM 87505
Phone:(505) 476-3470 Fax:(505) 476-3462

State of New Mexico
Energy, Minerals and Natural Resources
Oil Conservation Division
1220 S. St Francis Dr.
Santa Fe, NM 87505

QUESTIONS

Action 346448

QUESTIONS

Operator: COG OPERATING LLC 600 W Illinois Ave Midland, TX 79701	OGRID: 229137
	Action Number: 346448
	Action Type: [NOTIFY] Notification Of Sampling (C-141N)

QUESTIONS

Prerequisites	
Incident ID (n#)	nAPP2410932444
Incident Name	NAPP2410932444 COPPERHEAD 31 FED COM 1H @ 0
Incident Type	Oil Release
Incident Status	Initial C-141 Approved

Location of Release Source	
Site Name	Copperhead 31 Fed Com 1H
Date Release Discovered	04/16/2024
Surface Owner	Federal

Sampling Event General Information	
Please answer all the questions in this group.	
What is the sampling surface area in square feet	1,658
What is the estimated number of samples that will be gathered	22
Sampling date pursuant to Subparagraph (a) of Paragraph (1) of Subsection D of 19.15.29.12 NMAC	05/23/2024
Time sampling will commence	02:30 PM
Please provide any information necessary for observers to contact samplers	Conner Moerhring (432) 813- 6823
Please provide any information necessary for navigation to sampling site	GPS 32.020010, -104.017243

District I
1625 N. French Dr., Hobbs, NM 88240
Phone:(575) 393-6161 Fax:(575) 393-0720
District II
811 S. First St., Artesia, NM 88210
Phone:(575) 748-1283 Fax:(575) 748-9720
District III
1000 Rio Brazos Rd., Aztec, NM 87410
Phone:(505) 334-6178 Fax:(505) 334-6170
District IV
1220 S. St Francis Dr., Santa Fe, NM 87505
Phone:(505) 476-3470 Fax:(505) 476-3462

State of New Mexico
Energy, Minerals and Natural Resources
Oil Conservation Division
1220 S. St Francis Dr.
Santa Fe, NM 87505

CONDITIONS

Action 346448

CONDITIONS

Operator: COG OPERATING LLC 600 W Illinois Ave Midland, TX 79701	OGRID: 229137
	Action Number: 346448
	Action Type: [NOTIFY] Notification Of Sampling (C-141N)

CONDITIONS

Created By	Condition	Condition Date
jacquih	Failure to notify the OCD of sampling events including any changes in date/time per the requirements of 19.15.29.12.D.(1).(a) NMAC, may result in the remediation closure samples not being accepted.	5/21/2024

District I
1625 N. French Dr., Hobbs, NM 88240
Phone:(575) 393-6161 Fax:(575) 393-0720
District II
811 S. First St., Artesia, NM 88210
Phone:(575) 748-1283 Fax:(575) 748-9720
District III
1000 Rio Brazos Rd., Aztec, NM 87410
Phone:(505) 334-6178 Fax:(505) 334-6170
District IV
1220 S. St Francis Dr., Santa Fe, NM 87505
Phone:(505) 476-3470 Fax:(505) 476-3462

State of New Mexico
Energy, Minerals and Natural Resources
Oil Conservation Division
1220 S. St Francis Dr.
Santa Fe, NM 87505

QUESTIONS

Action 346453

QUESTIONS

Operator: COG OPERATING LLC 600 W Illinois Ave Midland, TX 79701	OGRID: 229137
	Action Number: 346453
	Action Type: [NOTIFY] Notification Of Liner Inspection (C-141L)

QUESTIONS

Prerequisites	
Incident ID (n#)	nAPP2410932444
Incident Name	NAPP2410932444 COPPERHEAD 31 FED COM 1H @ 0
Incident Type	Oil Release
Incident Status	Initial C-141 Approved

Location of Release Source	
Site Name	Copperhead 31 Fed Com 1H
Date Release Discovered	04/16/2024
Surface Owner	Federal

Liner Inspection Event Information	
Please answer all the questions in this group.	
What is the liner inspection surface area in square feet	5,000
Have all the impacted materials been removed from the liner	Yes
Liner inspection date pursuant to Subparagraph (a) of Paragraph (5) of Subsection A of 19.15.29.11 NMAC	05/23/2024
Time liner inspection will commence	02:30 PM
Please provide any information necessary for observers to liner inspection	Conner Moerhring (432) 813- 6823
Please provide any information necessary for navigation to liner inspection site	GPS 32.020010, -104.017243

District I
1625 N. French Dr., Hobbs, NM 88240
Phone:(575) 393-6161 Fax:(575) 393-0720
District II
811 S. First St., Artesia, NM 88210
Phone:(575) 748-1283 Fax:(575) 748-9720
District III
1000 Rio Brazos Rd., Aztec, NM 87410
Phone:(505) 334-6178 Fax:(505) 334-6170
District IV
1220 S. St Francis Dr., Santa Fe, NM 87505
Phone:(505) 476-3470 Fax:(505) 476-3462

State of New Mexico
Energy, Minerals and Natural Resources
Oil Conservation Division
1220 S. St Francis Dr.
Santa Fe, NM 87505

CONDITIONS

Action 346453

CONDITIONS

Operator: COG OPERATING LLC 600 W Illinois Ave Midland, TX 79701	OGRID: 229137
	Action Number: 346453
	Action Type: [NOTIFY] Notification Of Liner Inspection (C-141L)

CONDITIONS

Created By	Condition	Condition Date
jacquih	Failure to notify the OCD of liner inspections including any changes in date/time per the requirements of 19.15.29.11.A(5)(a)(ii) NMAC, may result in the inspection not being accepted.	5/21/2024

APPENDIX D

CARMONA RESOURCES



Nearest water well

ConocoPhillips

Legend

- 0.50 Mile Radius
- 0.91 Miles
- 2.91 Miles
- Groundwater Determination Bore
- SITE LOCATION
- USGS Water Well



medium karst

ConocoPhillips
Copperhead 31 Fed 1H
Eddy Couty, New Mexico

Legend

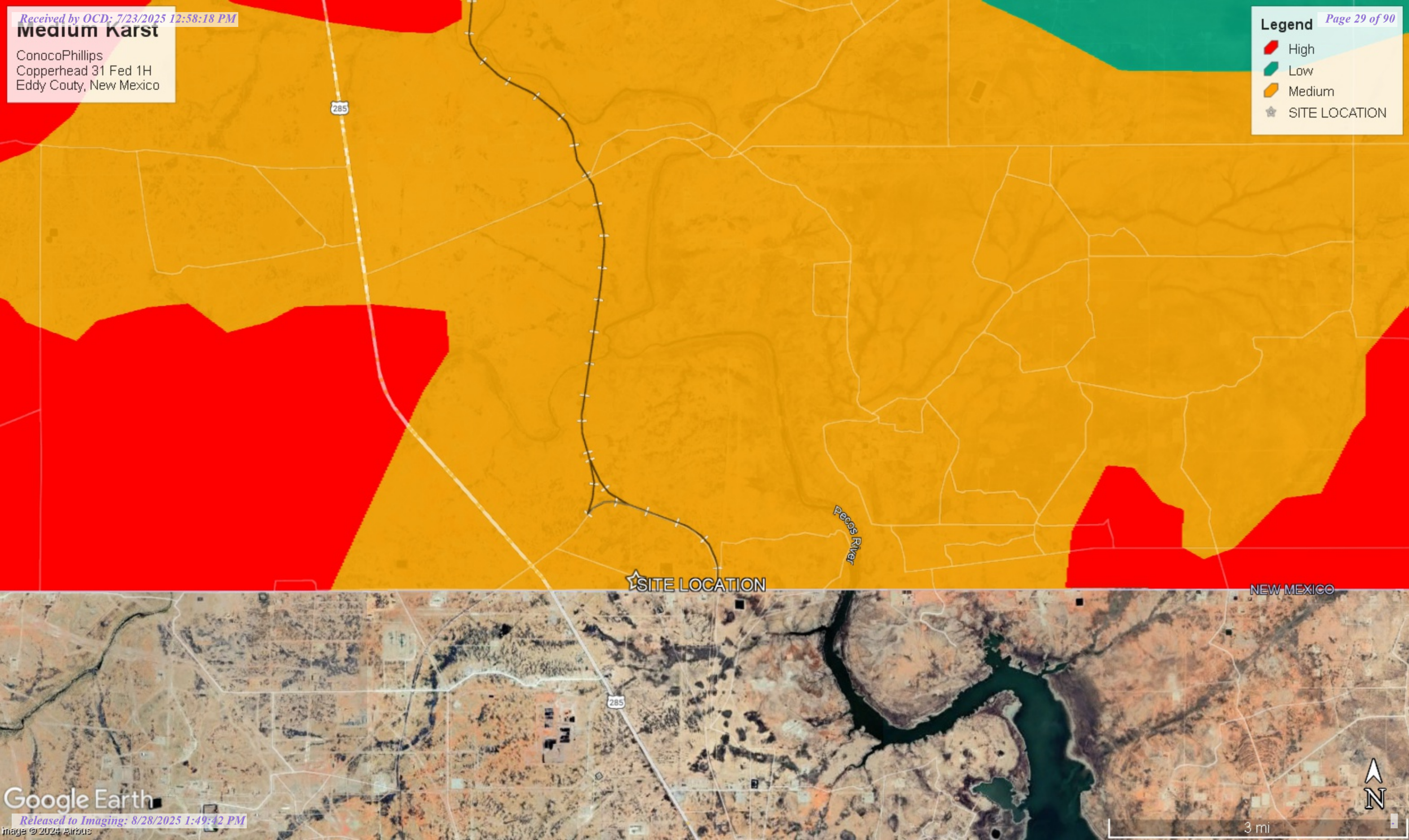
Page 29 of 90

High

Low

Medium

SITE LOCATION



CARMONA RESOURCES



Project Name : **COG - Copperhead Fee 31E CTB (01.14.22)**
 Project No. : **1002**
 Location : **Eddy County, New Mexico**
 Coordinates : **32.002359, -104.031693**
 Elevation : **2,930'**

Date : **Monday, May 9, 2022**
 Sampler : **Lane Scarborough**
 Driller : **Scarborough Drilling**
 Method : **Air Rotary**

Depth (ft.)	WL	Soil Description	Lithology	Depth (ft.)	WL	Soil Description	Lithology
0		(0') - Red to Brown sandy clay, with 50% medium well-cemented angular gravel, dry, no organics, no odor (GC)		50		(50') - light-dark brown stiff soft clayey sand with 3% fine loose soft, sub-angular sand, dry, no organics (ML)	
5		(5') - Red to Brown sandy clay, with 50% medium well-cemented angular gravel, dry, no organics, no odor (GC)		55		(55') - light-dark brown stiff soft clayey sand with 3% fine loose soft, sub-angular sand, dry, no organics (ML)	
10		(10') - Red to Brown sandy clay, with 50% medium well-cemented angular gravel, dry, no organics, no odor (GC)		60			
12		(12') - Red to Brown sandy clay, with 50% well-cemented gypsum fragments, dry, no organics, no odor (SC)		65			
15		(15') - Red to Brown sandy clay, with 50% well-cemented gypsum fragments, dry, no organics, no odor (SC)		70			
20		(20') - Red to Brown sandy clay, with 50% well-cemented gypsum fragments, dry, no organics, no odor (SC)		75			
25		(25') - Red to Brown sandy clay, with 50% well-cemented gypsum fragments, dry, no organics, no odor (SC)		80			
30		(30') - light-dark brown stiff soft clayey sand with 3% fine loose soft, sub-angular sand, dry, no organics (ML)		85			
35		(35') - light-dark brown stiff soft clayey sand with 3% fine loose soft, sub-angular sand, dry, no organics (ML)		90			
40		(40') - light-dark brown stiff soft clayey sand with 3% fine loose soft, sub-angular sand, dry, no organics (ML)		95			
45		(45') - light-dark brown stiff soft clayey sand with 3% fine loose soft, sub-angular sand, dry, no organics (ML)		105			
50							

Comments : Boring terminated at 55' at 10:00 AM Central Time with no presence of groundwater or moisture.

Well gauged on 5/13/22 at 11:00 AM Central Time with no detection of groundwater or moisture



USGS Home
Contact USGS
Search USGS

National Water Information System: Web Interface

USGS Water Resources

Data Category:
Groundwater

Geographic Area:
New Mexico

GO

Click to hideNews Bulletins

- Explore the *NEW* [USGS National Water Dashboard](#) interactive map to access real-time water data from over 13,500 stations nationwide.
- [Full News](#)

Groundwater levels for New Mexico

Click to hide state-specific text

! Important: [Next Generation Monitoring Location Page](#)

Search Results -- 1 sites found

Agency code = usgs
site_no list =

- 320126103562801

Minimum number of levels = 1
[Save file of selected sites](#) to local disk for future upload

USGS 320126103562801 26S.29E.22.340

Eddy County, New Mexico
Latitude 32°01'22", Longitude 103°58'26" NAD27
Land-surface elevation 2,888 feet above NGVD29
The depth of the well is 80 feet below land surface.
This well is completed in the Other aquifers (N9999OTHER) national aquifer.
This well is completed in the Rustler Formation (312RSLR) local aquifer.

Output formats

Table of data
Tab-separated data
Graph of data
Reselect period

Date	Time	? Water-level date-time accuracy	? Parameter code	Water level, feet below land surface	Water level, feet above specific vertical datum	Referenced vertical datum	? Status	? Method of measurement	? Measuring agency	? Source of measurement
1958-08-18			D	62610	2819.26	NGVD29	1	Z		
1958-08-18			D	62611	2820.78	NAVD88	1	Z		
1958-08-18			D	72019	68.74		1	Z		

Explanation

Section	Code	Description
Water-level date-time accuracy	D	Date is accurate to the Day
Parameter code	62610	Groundwater level above NGVD 1929, feet
Parameter code	62611	Groundwater level above NAVD 1988, feet
Parameter code	72019	Depth to water level, feet below land surface
Referenced vertical datum	NAVD88	North American Vertical Datum of 1988
Referenced vertical datum	NGVD29	National Geodetic Vertical Datum of 1929
Status	1	Static

Section	Code	Description
Method of measurement	Z	Other.
Measuring agency		Not determined
Source of measurement		Not determined
Water-level approval status	A	Approved for publication -- Processing and review completed.

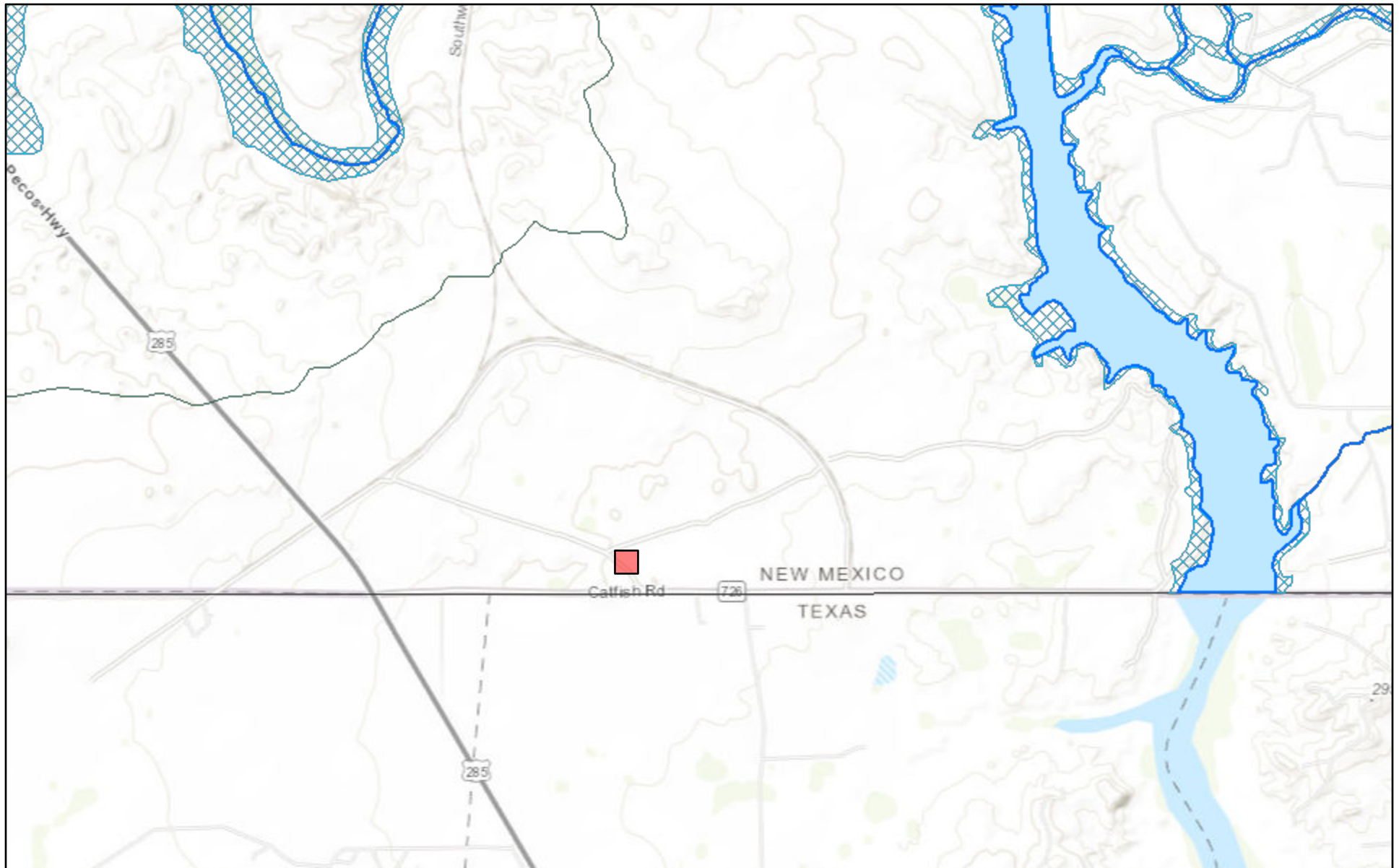
[Questions or Comments](#)
[Automated retrievals](#)
[Help](#)
[Data Tips](#)
[Explanation of terms](#)
[Subscribe for system changes](#)
[News](#)

[Accessibility](#) [FOIA](#) [Privacy](#) [Policies and Notices](#)
[U.S. Department of the Interior](#) | [U.S. Geological Survey](#)
Title: Groundwater for New Mexico: Water Levels
URL: <https://nwis.waterdata.usgs.gov/nm/nwis/gwlevels?>

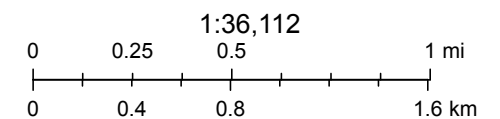


Page Contact Information: [New Mexico Water Data Maintainer](#)
Page Last Modified: 2023-06-14 10:54:42 EDT
0.28 0.24 nadww02

New Mexico NFHL Data



September 11, 2023



FEMA, Sources: Esri, HERE, Garmin, Intermap, increment P Corp., GEBCO, USGS, FAO, NPS, NRCAN, GeoBase, IGN, Kadaster NL, Ordnance Survey,

nmflood.org is made possible through a collaboration with NMDHSEM,

This is a non-regulatory product for informational use only. Please consult your local floodplain administrator for further information.

APPENDIX E

CARMONA RESOURCES





PHONE (575) 393-2326 ° 101 E. MARLAND ° HOBBS, NM 88240

May 14, 2024

CONNER MOEHRING

CARMONA RESOURCES

310 W WALL ST, SUITE 500

MIDLAND, TX 79701

RE: COPPERHEAD 31 FED 1H

Enclosed are the results of analyses for samples received by the laboratory on 05/09/24 9:26.

Cardinal Laboratories is accredited through Texas NELAP under certificate number T104704398-23-16. Accreditation applies to drinking water, non-potable water and solid and chemical materials. All accredited analytes are denoted by an asterisk (*). For a complete list of accredited analytes and matrices visit the TCEQ website at www.tceq.texas.gov/field/qa/lab_accred_certif.html.

Cardinal Laboratories is accredited through the State of Colorado Department of Public Health and Environment for:

Method EPA 552.2	Haloacetic Acids (HAA-5)
Method EPA 524.2	Total Trihalomethanes (TTHM)
Method EPA 524.4	Regulated VOCs (V1, V2, V3)

Accreditation applies to public drinking water matrices.

This report meets NELAP requirements and is made up of a cover page, analytical results, and a copy of the original chain-of-custody. If you have any questions concerning this report, please feel free to contact me.

Sincerely,

A handwritten signature in black ink that reads "Mike Snyder". The signature is fluid and cursive, with the first name "Mike" and last name "Snyder" clearly distinguishable.

Mike Snyder For Celey D. Keene

Lab Director/Quality Manager



PHONE (575) 393-2326 ° 101 E. MARLAND ° HOBBS, NM 88240

Analytical Results For:

CARMONA RESOURCES
 CONNER MOEHRING
 310 W WALL ST, SUITE 500
 MIDLAND TX, 79701
 Fax To:

Received: 05/09/2024
 Reported: 05/14/2024
 Project Name: COPPERHEAD 31 FED 1H
 Project Number: 2356
 Project Location: EDDY COUNTY, NEW MEXICO

Sampling Date: 05/08/2024
 Sampling Type: Soil
 Sampling Condition: Cool & Intact
 Sample Received By: Shalyn Rodriguez

Sample ID: S - 1 (0-1') (H242518-01)

BTX 8021B			mg/kg		Analyzed By: MS				
Analyte	Result	Reporting Limit	Analyzed	Method Blank	BS	% Recovery	True Value QC	RPD	Qualifier
Benzene*	<0.050	0.050	05/10/2024	ND	2.01	101	2.00	1.47	
Toluene*	<0.050	0.050	05/10/2024	ND	1.98	99.1	2.00	1.26	
Ethylbenzene*	<0.050	0.050	05/10/2024	ND	1.95	97.4	2.00	1.40	
Total Xylenes*	<0.150	0.150	05/10/2024	ND	5.70	95.0	6.00	1.38	
Total BTX	<0.300	0.300	05/10/2024	ND					

Surrogate: 4-Bromofluorobenzene (PID) 84.0 % 71.5-134

Chloride, SM4500Cl-B			mg/kg		Analyzed By: AC				
Analyte	Result	Reporting Limit	Analyzed	Method Blank	BS	% Recovery	True Value QC	RPD	Qualifier
Chloride	240	16.0	05/10/2024	ND	400	100	400	3.92	

TPH 8015M			mg/kg		Analyzed By: MS				
Analyte	Result	Reporting Limit	Analyzed	Method Blank	BS	% Recovery	True Value QC	RPD	Qualifier
GRO C6-C10*	<10.0	10.0	05/09/2024	ND	194	97.2	200	1.93	
DRO >C10-C28*	<10.0	10.0	05/09/2024	ND	204	102	200	0.836	
EXT DRO >C28-C36	<10.0	10.0	05/09/2024	ND					

Surrogate: 1-Chlorooctane 112 % 48.2-134

Surrogate: 1-Chlorooctadecane 120 % 49.1-148

Cardinal Laboratories

*=Accredited Analyte

PLEASE NOTE: Liability and Damages. Cardinal's liability and client's exclusive remedy for any claim arising, whether based in contract or tort, shall be limited to the amount paid by client for analyses. All claims, including those for negligence and any other cause whatsoever shall be deemed waived unless made in writing and received by Cardinal within thirty (30) days after completion of the applicable service. In no event shall Cardinal be liable for incidental or consequential damages, including, without limitation, business interruptions, loss of use, or loss of profits incurred by client, its subsidiaries, affiliates or successors arising out of or related to the performance of the services hereunder by Cardinal, regardless of whether such claim is based upon any of the above stated reasons or otherwise. Results relate only to the samples identified above. This report shall not be reproduced except in full with written approval of Cardinal Laboratories.

Mike Snyder For Celey D. Keene, Lab Director/Quality Manager



PHONE (575) 393-2326 ° 101 E. MARLAND ° HOBBS, NM 88240

Analytical Results For:

CARMONA RESOURCES
 CONNER MOEHRING
 310 W WALL ST, SUITE 500
 MIDLAND TX, 79701
 Fax To:

Received: 05/09/2024
 Reported: 05/14/2024
 Project Name: COPPERHEAD 31 FED 1H
 Project Number: 2356
 Project Location: EDDY COUNTY, NEW MEXICO

Sampling Date: 05/08/2024
 Sampling Type: Soil
 Sampling Condition: Cool & Intact
 Sample Received By: Shalyn Rodriguez

Sample ID: S - 1 (1.5') (H242518-02)

BTEx 8021B		mg/kg		Analyzed By: MS						
Analyte	Result	Reporting Limit	Analyzed	Method Blank	BS	% Recovery	True Value QC	RPD	Qualifier	
Benzene*	<0.050	0.050	05/10/2024	ND	2.01	101	2.00	1.47		
Toluene*	<0.050	0.050	05/10/2024	ND	1.98	99.1	2.00	1.26		
Ethylbenzene*	<0.050	0.050	05/10/2024	ND	1.95	97.4	2.00	1.40		
Total Xylenes*	<0.150	0.150	05/10/2024	ND	5.70	95.0	6.00	1.38		
Total BTEX	<0.300	0.300	05/10/2024	ND						

Surrogate: 4-Bromofluorobenzene (PID) 85.5 % 71.5-134

Chloride, SM4500Cl-B		mg/kg		Analyzed By: AC					
Analyte	Result	Reporting Limit	Analyzed	Method Blank	BS	% Recovery	True Value QC	RPD	Qualifier
Chloride	1040	16.0	05/10/2024	ND	400	100	400	3.92	

TPH 8015M		mg/kg		Analyzed By: MS					
Analyte	Result	Reporting Limit	Analyzed	Method Blank	BS	% Recovery	True Value QC	RPD	Qualifier
GRO C6-C10*	<10.0	10.0	05/09/2024	ND	194	97.2	200	1.93	
DRO >C10-C28*	<10.0	10.0	05/09/2024	ND	204	102	200	0.836	
EXT DRO >C28-C36	<10.0	10.0	05/09/2024	ND					

Surrogate: 1-Chlorooctane 116 % 48.2-134

Surrogate: 1-Chlorooctadecane 121 % 49.1-148

Cardinal Laboratories

*=Accredited Analyte

PLEASE NOTE: Liability and Damages. Cardinal's liability and client's exclusive remedy for any claim arising, whether based in contract or tort, shall be limited to the amount paid by client for analyses. All claims, including those for negligence and any other cause whatsoever shall be deemed waived unless made in writing and received by Cardinal within thirty (30) days after completion of the applicable service. In no event shall Cardinal be liable for incidental or consequential damages, including, without limitation, business interruptions, loss of use, or loss of profits incurred by client, its subsidiaries, affiliates or successors arising out of or related to the performance of the services hereunder by Cardinal, regardless of whether such claim is based upon any of the above stated reasons or otherwise. Results relate only to the samples identified above. This report shall not be reproduced except in full with written approval of Cardinal Laboratories.

Mike Snyder For Celey D. Keene, Lab Director/Quality Manager



PHONE (575) 393-2326 ° 101 E. MARLAND ° HOBBS, NM 88240

Analytical Results For:

CARMONA RESOURCES
 CONNER MOEHRING
 310 W WALL ST, SUITE 500
 MIDLAND TX, 79701
 Fax To:

Received: 05/09/2024
 Reported: 05/14/2024
 Project Name: COPPERHEAD 31 FED 1H
 Project Number: 2356
 Project Location: EDDY COUNTY, NEW MEXICO

Sampling Date: 05/08/2024
 Sampling Type: Soil
 Sampling Condition: Cool & Intact
 Sample Received By: Shalyn Rodriguez

Sample ID: S - 1 (2') (H242518-03)

BTEx 8021B		mg/kg		Analyzed By: MS						
Analyte	Result	Reporting Limit	Analyzed	Method Blank	BS	% Recovery	True Value QC	RPD	Qualifier	
Benzene*	<0.050	0.050	05/10/2024	ND	2.01	101	2.00	1.47		
Toluene*	<0.050	0.050	05/10/2024	ND	1.98	99.1	2.00	1.26		
Ethylbenzene*	<0.050	0.050	05/10/2024	ND	1.95	97.4	2.00	1.40		
Total Xylenes*	<0.150	0.150	05/10/2024	ND	5.70	95.0	6.00	1.38		
Total BTEX	<0.300	0.300	05/10/2024	ND						

Surrogate: 4-Bromofluorobenzene (PID) 85.5 % 71.5-134

Chloride, SM4500Cl-B		mg/kg		Analyzed By: AC						
Analyte	Result	Reporting Limit	Analyzed	Method Blank	BS	% Recovery	True Value QC	RPD	Qualifier	
Chloride	992	16.0	05/10/2024	ND	400	100	400	3.92		

TPH 8015M		mg/kg		Analyzed By: MS					
Analyte	Result	Reporting Limit	Analyzed	Method Blank	BS	% Recovery	True Value QC	RPD	Qualifier
GRO C6-C10*	<10.0	10.0	05/10/2024	ND	194	97.2	200	1.93	
DRO >C10-C28*	<10.0	10.0	05/10/2024	ND	204	102	200	0.836	
EXT DRO >C28-C36	<10.0	10.0	05/10/2024	ND					

Surrogate: 1-Chlorooctane 113 % 48.2-134

Surrogate: 1-Chlorooctadecane 119 % 49.1-148

Cardinal Laboratories

*=Accredited Analyte

PLEASE NOTE: Liability and Damages. Cardinal's liability and client's exclusive remedy for any claim arising, whether based in contract or tort, shall be limited to the amount paid by client for analyses. All claims, including those for negligence and any other cause whatsoever shall be deemed waived unless made in writing and received by Cardinal within thirty (30) days after completion of the applicable service. In no event shall Cardinal be liable for incidental or consequential damages, including, without limitation, business interruptions, loss of use, or loss of profits incurred by client, its subsidiaries, affiliates or successors arising out of or related to the performance of the services hereunder by Cardinal, regardless of whether such claim is based upon any of the above stated reasons or otherwise. Results relate only to the samples identified above. This report shall not be reproduced except in full with written approval of Cardinal Laboratories.

Mike Snyder For Celey D. Keene, Lab Director/Quality Manager



PHONE (575) 393-2326 ° 101 E. MARLAND ° HOBBS, NM 88240

Analytical Results For:

CARMONA RESOURCES
 CONNER MOEHRING
 310 W WALL ST, SUITE 500
 MIDLAND TX, 79701
 Fax To:

Received: 05/09/2024
 Reported: 05/14/2024
 Project Name: COPPERHEAD 31 FED 1H
 Project Number: 2356
 Project Location: EDDY COUNTY, NEW MEXICO

Sampling Date: 05/08/2024
 Sampling Type: Soil
 Sampling Condition: Cool & Intact
 Sample Received By: Shalyn Rodriguez

Sample ID: S - 1 (3') (H242518-04)

BTEx 8021B		mg/kg		Analyzed By: MS						
Analyte	Result	Reporting Limit	Analyzed	Method Blank	BS	% Recovery	True Value QC	RPD	Qualifier	
Benzene*	<0.050	0.050	05/11/2024	ND	2.01	101	2.00	1.47		
Toluene*	<0.050	0.050	05/11/2024	ND	1.98	99.1	2.00	1.26		
Ethylbenzene*	<0.050	0.050	05/11/2024	ND	1.95	97.4	2.00	1.40		
Total Xylenes*	<0.150	0.150	05/11/2024	ND	5.70	95.0	6.00	1.38		
Total BTEX	<0.300	0.300	05/11/2024	ND						

Surrogate: 4-Bromofluorobenzene (PID) 85.0 % 71.5-134

Chloride, SM4500Cl-B		mg/kg		Analyzed By: AC						
Analyte	Result	Reporting Limit	Analyzed	Method Blank	BS	% Recovery	True Value QC	RPD	Qualifier	
Chloride	432	16.0	05/10/2024	ND	400	100	400	3.92		

TPH 8015M		mg/kg		Analyzed By: MS					
Analyte	Result	Reporting Limit	Analyzed	Method Blank	BS	% Recovery	True Value QC	RPD	Qualifier
GRO C6-C10*	<10.0	10.0	05/10/2024	ND	194	97.2	200	1.93	
DRO >C10-C28*	<10.0	10.0	05/10/2024	ND	204	102	200	0.836	
EXT DRO >C28-C36	<10.0	10.0	05/10/2024	ND					

Surrogate: 1-Chlorooctane 110 % 48.2-134

Surrogate: 1-Chlorooctadecane 117 % 49.1-148

Cardinal Laboratories

*=Accredited Analyte

PLEASE NOTE: Liability and Damages. Cardinal's liability and client's exclusive remedy for any claim arising, whether based in contract or tort, shall be limited to the amount paid by client for analyses. All claims, including those for negligence and any other cause whatsoever shall be deemed waived unless made in writing and received by Cardinal within thirty (30) days after completion of the applicable service. In no event shall Cardinal be liable for incidental or consequential damages, including, without limitation, business interruptions, loss of use, or loss of profits incurred by client, its subsidiaries, affiliates or successors arising out of or related to the performance of the services hereunder by Cardinal, regardless of whether such claim is based upon any of the above stated reasons or otherwise. Results relate only to the samples identified above. This report shall not be reproduced except in full with written approval of Cardinal Laboratories.

Mike Snyder For Celey D. Keene, Lab Director/Quality Manager



PHONE (575) 393-2326 ° 101 E. MARLAND ° HOBBS, NM 88240

Analytical Results For:

CARMONA RESOURCES
 CONNER MOEHRING
 310 W WALL ST, SUITE 500
 MIDLAND TX, 79701
 Fax To:

Received: 05/09/2024
 Reported: 05/14/2024
 Project Name: COPPERHEAD 31 FED 1H
 Project Number: 2356
 Project Location: EDDY COUNTY, NEW MEXICO

Sampling Date: 05/08/2024
 Sampling Type: Soil
 Sampling Condition: Cool & Intact
 Sample Received By: Shalyn Rodriguez

Sample ID: S - 2 (0-1') (H242518-05)

BTEx 8021B		mg/kg		Analyzed By: MS					
Analyte	Result	Reporting Limit	Analyzed	Method Blank	BS	% Recovery	True Value QC	RPD	Qualifier
Benzene*	<0.050	0.050	05/11/2024	ND	2.01	101	2.00	1.47	
Toluene*	<0.050	0.050	05/11/2024	ND	1.98	99.1	2.00	1.26	
Ethylbenzene*	<0.050	0.050	05/11/2024	ND	1.95	97.4	2.00	1.40	
Total Xylenes*	<0.150	0.150	05/11/2024	ND	5.70	95.0	6.00	1.38	
Total BTEX	<0.300	0.300	05/11/2024	ND					

Surrogate: 4-Bromofluorobenzene (PID) 83.6 % 71.5-134

Chloride, SM4500Cl-B		mg/kg		Analyzed By: AC					
Analyte	Result	Reporting Limit	Analyzed	Method Blank	BS	% Recovery	True Value QC	RPD	Qualifier
Chloride	448	16.0	05/10/2024	ND	400	100	400	3.92	

TPH 8015M		mg/kg		Analyzed By: MS					
Analyte	Result	Reporting Limit	Analyzed	Method Blank	BS	% Recovery	True Value QC	RPD	Qualifier
GRO C6-C10*	<10.0	10.0	05/10/2024	ND	190	94.9	200	2.04	
DRO >C10-C28*	334	10.0	05/10/2024	ND	187	93.5	200	0.00589	
EXT DRO >C28-C36	83.7	10.0	05/10/2024	ND					

Surrogate: 1-Chlorooctane 104 % 48.2-134

Surrogate: 1-Chlorooctadecane 115 % 49.1-148

Cardinal Laboratories

*=Accredited Analyte

PLEASE NOTE: Liability and Damages. Cardinal's liability and client's exclusive remedy for any claim arising, whether based in contract or tort, shall be limited to the amount paid by client for analyses. All claims, including those for negligence and any other cause whatsoever shall be deemed waived unless made in writing and received by Cardinal within thirty (30) days after completion of the applicable service. In no event shall Cardinal be liable for incidental or consequential damages, including, without limitation, business interruptions, loss of use, or loss of profits incurred by client, its subsidiaries, affiliates or successors arising out of or related to the performance of the services hereunder by Cardinal, regardless of whether such claim is based upon any of the above stated reasons or otherwise. Results relate only to the samples identified above. This report shall not be reproduced except in full with written approval of Cardinal Laboratories.

Mike Snyder For Celey D. Keene, Lab Director/Quality Manager



PHONE (575) 393-2326 ° 101 E. MARLAND ° HOBBS, NM 88240

Analytical Results For:

CARMONA RESOURCES
 CONNER MOEHRING
 310 W WALL ST, SUITE 500
 MIDLAND TX, 79701
 Fax To:

Received: 05/09/2024
 Reported: 05/14/2024
 Project Name: COPPERHEAD 31 FED 1H
 Project Number: 2356
 Project Location: EDDY COUNTY, NEW MEXICO

Sampling Date: 05/08/2024
 Sampling Type: Soil
 Sampling Condition: Cool & Intact
 Sample Received By: Shalyn Rodriguez

Sample ID: S - 2 (1.5') (H242518-06)

BTEx 8021B		mg/kg		Analyzed By: MS						
Analyte	Result	Reporting Limit	Analyzed	Method Blank	BS	% Recovery	True Value QC	RPD	Qualifier	
Benzene*	<0.050	0.050	05/11/2024	ND	2.01	101	2.00	1.47		
Toluene*	<0.050	0.050	05/11/2024	ND	1.98	99.1	2.00	1.26		
Ethylbenzene*	<0.050	0.050	05/11/2024	ND	1.95	97.4	2.00	1.40		
Total Xylenes*	<0.150	0.150	05/11/2024	ND	5.70	95.0	6.00	1.38		
Total BTEx	<0.300	0.300	05/11/2024	ND						

Surrogate: 4-Bromofluorobenzene (PID) 84.5 % 71.5-134

Chloride, SM4500Cl-B		mg/kg		Analyzed By: AC						
Analyte	Result	Reporting Limit	Analyzed	Method Blank	BS	% Recovery	True Value QC	RPD	Qualifier	
Chloride	96.0	16.0	05/10/2024	ND	400	100	400	3.92		

TPH 8015M		mg/kg		Analyzed By: MS					
Analyte	Result	Reporting Limit	Analyzed	Method Blank	BS	% Recovery	True Value QC	RPD	Qualifier
GRO C6-C10*	<10.0	10.0	05/10/2024	ND	190	94.9	200	2.04	
DRO >C10-C28*	<10.0	10.0	05/10/2024	ND	187	93.5	200	0.00589	
EXT DRO >C28-C36	<10.0	10.0	05/10/2024	ND					

Surrogate: 1-Chlorooctane 103 % 48.2-134

Surrogate: 1-Chlorooctadecane 96.7 % 49.1-148

Cardinal Laboratories

*=Accredited Analyte

PLEASE NOTE: Liability and Damages. Cardinal's liability and client's exclusive remedy for any claim arising, whether based in contract or tort, shall be limited to the amount paid by client for analyses. All claims, including those for negligence and any other cause whatsoever shall be deemed waived unless made in writing and received by Cardinal within thirty (30) days after completion of the applicable service. In no event shall Cardinal be liable for incidental or consequential damages, including, without limitation, business interruptions, loss of use, or loss of profits incurred by client, its subsidiaries, affiliates or successors arising out of or related to the performance of the services hereunder by Cardinal, regardless of whether such claim is based upon any of the above stated reasons or otherwise. Results relate only to the samples identified above. This report shall not be reproduced except in full with written approval of Cardinal Laboratories.

Mike Snyder For Celey D. Keene, Lab Director/Quality Manager



PHONE (575) 393-2326 ° 101 E. MARLAND ° HOBBS, NM 88240

Analytical Results For:

CARMONA RESOURCES
 CONNER MOEHRING
 310 W WALL ST, SUITE 500
 MIDLAND TX, 79701
 Fax To:

Received: 05/09/2024
 Reported: 05/14/2024
 Project Name: COPPERHEAD 31 FED 1H
 Project Number: 2356
 Project Location: EDDY COUNTY, NEW MEXICO

Sampling Date: 05/08/2024
 Sampling Type: Soil
 Sampling Condition: Cool & Intact
 Sample Received By: Shalyn Rodriguez

Sample ID: S - 2 (2') (H242518-07)

BTEx 8021B		mg/kg		Analyzed By: MS						
Analyte	Result	Reporting Limit	Analyzed	Method Blank	BS	% Recovery	True Value QC	RPD	Qualifier	
Benzene*	<0.050	0.050	05/11/2024	ND	2.01	101	2.00	1.47		
Toluene*	<0.050	0.050	05/11/2024	ND	1.98	99.1	2.00	1.26		
Ethylbenzene*	<0.050	0.050	05/11/2024	ND	1.95	97.4	2.00	1.40		
Total Xylenes*	<0.150	0.150	05/11/2024	ND	5.70	95.0	6.00	1.38		
Total BTEX	<0.300	0.300	05/11/2024	ND						

Surrogate: 4-Bromofluorobenzene (PID) 85.1 % 71.5-134

Chloride, SM4500Cl-B		mg/kg		Analyzed By: AC					
Analyte	Result	Reporting Limit	Analyzed	Method Blank	BS	% Recovery	True Value QC	RPD	Qualifier
Chloride	384	16.0	05/10/2024	ND	400	100	400	3.92	

TPH 8015M		mg/kg		Analyzed By: MS					
Analyte	Result	Reporting Limit	Analyzed	Method Blank	BS	% Recovery	True Value QC	RPD	Qualifier
GRO C6-C10*	<10.0	10.0	05/10/2024	ND	190	94.9	200	2.04	
DRO >C10-C28*	<10.0	10.0	05/10/2024	ND	187	93.5	200	0.00589	
EXT DRO >C28-C36	<10.0	10.0	05/10/2024	ND					

Surrogate: 1-Chlorooctane 108 % 48.2-134

Surrogate: 1-Chlorooctadecane 106 % 49.1-148

Cardinal Laboratories

*=Accredited Analyte

PLEASE NOTE: Liability and Damages. Cardinal's liability and client's exclusive remedy for any claim arising, whether based in contract or tort, shall be limited to the amount paid by client for analyses. All claims, including those for negligence and any other cause whatsoever shall be deemed waived unless made in writing and received by Cardinal within thirty (30) days after completion of the applicable service. In no event shall Cardinal be liable for incidental or consequential damages, including, without limitation, business interruptions, loss of use, or loss of profits incurred by client, its subsidiaries, affiliates or successors arising out of or related to the performance of the services hereunder by Cardinal, regardless of whether such claim is based upon any of the above stated reasons or otherwise. Results relate only to the samples identified above. This report shall not be reproduced except in full with written approval of Cardinal Laboratories.

Mike Snyder For Celey D. Keene, Lab Director/Quality Manager



PHONE (575) 393-2326 ° 101 E. MARLAND ° HOBBS, NM 88240

Analytical Results For:

CARMONA RESOURCES
 CONNER MOEHRING
 310 W WALL ST, SUITE 500
 MIDLAND TX, 79701
 Fax To:

Received: 05/09/2024
 Reported: 05/14/2024
 Project Name: COPPERHEAD 31 FED 1H
 Project Number: 2356
 Project Location: EDDY COUNTY, NEW MEXICO

Sampling Date: 05/08/2024
 Sampling Type: Soil
 Sampling Condition: Cool & Intact
 Sample Received By: Shalyn Rodriguez

Sample ID: S - 2 (3') (H242518-08)

BTEx 8021B		mg/kg		Analyzed By: MS						
Analyte	Result	Reporting Limit	Analyzed	Method Blank	BS	% Recovery	True Value QC	RPD	Qualifier	
Benzene*	<0.050	0.050	05/11/2024	ND	2.01	101	2.00	1.47		
Toluene*	<0.050	0.050	05/11/2024	ND	1.98	99.1	2.00	1.26		
Ethylbenzene*	<0.050	0.050	05/11/2024	ND	1.95	97.4	2.00	1.40		
Total Xylenes*	<0.150	0.150	05/11/2024	ND	5.70	95.0	6.00	1.38		
Total BTEX	<0.300	0.300	05/11/2024	ND						

Surrogate: 4-Bromofluorobenzene (PID) 84.7 % 71.5-134

Chloride, SM4500Cl-B		mg/kg		Analyzed By: AC						
Analyte	Result	Reporting Limit	Analyzed	Method Blank	BS	% Recovery	True Value QC	RPD	Qualifier	
Chloride	480	16.0	05/10/2024	ND	400	100	400	3.92		

TPH 8015M		mg/kg		Analyzed By: MS					
Analyte	Result	Reporting Limit	Analyzed	Method Blank	BS	% Recovery	True Value QC	RPD	Qualifier
GRO C6-C10*	<10.0	10.0	05/10/2024	ND	190	94.9	200	2.04	
DRO >C10-C28*	<10.0	10.0	05/10/2024	ND	187	93.5	200	0.00589	
EXT DRO >C28-C36	<10.0	10.0	05/10/2024	ND					

Surrogate: 1-Chlorooctane 106 % 48.2-134

Surrogate: 1-Chlorooctadecane 106 % 49.1-148

Cardinal Laboratories

*=Accredited Analyte

PLEASE NOTE: Liability and Damages. Cardinal's liability and client's exclusive remedy for any claim arising, whether based in contract or tort, shall be limited to the amount paid by client for analyses. All claims, including those for negligence and any other cause whatsoever shall be deemed waived unless made in writing and received by Cardinal within thirty (30) days after completion of the applicable service. In no event shall Cardinal be liable for incidental or consequential damages, including, without limitation, business interruptions, loss of use, or loss of profits incurred by client, its subsidiaries, affiliates or successors arising out of or related to the performance of the services hereunder by Cardinal, regardless of whether such claim is based upon any of the above stated reasons or otherwise. Results relate only to the samples identified above. This report shall not be reproduced except in full with written approval of Cardinal Laboratories.

Mike Snyder For Celey D. Keene, Lab Director/Quality Manager



PHONE (575) 393-2326 ° 101 E. MARLAND ° HOBBS, NM 88240

Analytical Results For:

CARMONA RESOURCES
 CONNER MOEHRING
 310 W WALL ST, SUITE 500
 MIDLAND TX, 79701
 Fax To:

Received: 05/09/2024
 Reported: 05/14/2024
 Project Name: COPPERHEAD 31 FED 1H
 Project Number: 2356
 Project Location: EDDY COUNTY, NEW MEXICO

Sampling Date: 05/08/2024
 Sampling Type: Soil
 Sampling Condition: Cool & Intact
 Sample Received By: Shalyn Rodriguez

Sample ID: S - 3 (0-1') (H242518-09)

BTEx 8021B			mg/kg		Analyzed By: MS				
Analyte	Result	Reporting Limit	Analyzed	Method Blank	BS	% Recovery	True Value QC	RPD	Qualifier
Benzene*	<0.050	0.050	05/11/2024	ND	2.01	101	2.00	1.47	
Toluene*	<0.050	0.050	05/11/2024	ND	1.98	99.1	2.00	1.26	
Ethylbenzene*	<0.050	0.050	05/11/2024	ND	1.95	97.4	2.00	1.40	
Total Xylenes*	<0.150	0.150	05/11/2024	ND	5.70	95.0	6.00	1.38	
Total BTEX	<0.300	0.300	05/11/2024	ND					

Surrogate: 4-Bromofluorobenzene (PID) 84.8 % 71.5-134

Chloride, SM4500Cl-B		mg/kg		Analyzed By: AC					
Analyte	Result	Reporting Limit	Analyzed	Method Blank	BS	% Recovery	True Value QC	RPD	Qualifier
Chloride	128	16.0	05/10/2024	ND	400	100	400	3.92	

TPH 8015M		mg/kg		Analyzed By: MS					
Analyte	Result	Reporting Limit	Analyzed	Method Blank	BS	% Recovery	True Value QC	RPD	Qualifier
GRO C6-C10*	<10.0	10.0	05/10/2024	ND	190	94.9	200	2.04	
DRO >C10-C28*	230	10.0	05/10/2024	ND	187	93.5	200	0.00589	
EXT DRO >C28-C36	33.6	10.0	05/10/2024	ND					

Surrogate: 1-Chlorooctane 98.5 % 48.2-134

Surrogate: 1-Chlorooctadecane 104 % 49.1-148

Cardinal Laboratories

*=Accredited Analyte

PLEASE NOTE: Liability and Damages. Cardinal's liability and client's exclusive remedy for any claim arising, whether based in contract or tort, shall be limited to the amount paid by client for analyses. All claims, including those for negligence and any other cause whatsoever shall be deemed waived unless made in writing and received by Cardinal within thirty (30) days after completion of the applicable service. In no event shall Cardinal be liable for incidental or consequential damages, including, without limitation, business interruptions, loss of use, or loss of profits incurred by client, its subsidiaries, affiliates or successors arising out of or related to the performance of the services hereunder by Cardinal, regardless of whether such claim is based upon any of the above stated reasons or otherwise. Results relate only to the samples identified above. This report shall not be reproduced except in full with written approval of Cardinal Laboratories.

Mike Snyder For Celey D. Keene, Lab Director/Quality Manager



PHONE (575) 393-2326 ° 101 E. MARLAND ° HOBBS, NM 88240

Analytical Results For:

CARMONA RESOURCES
 CONNER MOEHRING
 310 W WALL ST, SUITE 500
 MIDLAND TX, 79701
 Fax To:

Received: 05/09/2024
 Reported: 05/14/2024
 Project Name: COPPERHEAD 31 FED 1H
 Project Number: 2356
 Project Location: EDDY COUNTY, NEW MEXICO

Sampling Date: 05/08/2024
 Sampling Type: Soil
 Sampling Condition: Cool & Intact
 Sample Received By: Shalyn Rodriguez

Sample ID: S - 3 (1.5') (H242518-10)

BTEx 8021B		mg/kg		Analyzed By: MS					
Analyte	Result	Reporting Limit	Analyzed	Method Blank	BS	% Recovery	True Value QC	RPD	Qualifier
Benzene*	<0.050	0.050	05/13/2024	ND	2.08	104	2.00	1.90	
Toluene*	<0.050	0.050	05/13/2024	ND	2.05	102	2.00	1.99	
Ethylbenzene*	<0.050	0.050	05/13/2024	ND	2.01	100	2.00	1.82	
Total Xylenes*	<0.150	0.150	05/13/2024	ND	5.90	98.3	6.00	2.14	
Total BTEx	<0.300	0.300	05/13/2024	ND					

Surrogate: 4-Bromofluorobenzene (PID) 84.3 % 71.5-134

Chloride, SM4500CI-B		mg/kg		Analyzed By: AC					
Analyte	Result	Reporting Limit	Analyzed	Method Blank	BS	% Recovery	True Value QC	RPD	Qualifier
Chloride	528	16.0	05/10/2024	ND	400	100	400	3.92	

TPH 8015M		mg/kg		Analyzed By: MS					
Analyte	Result	Reporting Limit	Analyzed	Method Blank	BS	% Recovery	True Value QC	RPD	Qualifier
GRO C6-C10*	<10.0	10.0	05/10/2024	ND	190	94.9	200	2.04	
DRO >C10-C28*	<10.0	10.0	05/10/2024	ND	187	93.5	200	0.00589	
EXT DRO >C28-C36	<10.0	10.0	05/10/2024	ND					

Surrogate: 1-Chlorooctane 109 % 48.2-134

Surrogate: 1-Chlorooctadecane 107 % 49.1-148

Cardinal Laboratories

*=Accredited Analyte

PLEASE NOTE: Liability and Damages. Cardinal's liability and client's exclusive remedy for any claim arising, whether based in contract or tort, shall be limited to the amount paid by client for analyses. All claims, including those for negligence and any other cause whatsoever shall be deemed waived unless made in writing and received by Cardinal within thirty (30) days after completion of the applicable service. In no event shall Cardinal be liable for incidental or consequential damages, including, without limitation, business interruptions, loss of use, or loss of profits incurred by client, its subsidiaries, affiliates or successors arising out of or related to the performance of the services hereunder by Cardinal, regardless of whether such claim is based upon any of the above stated reasons or otherwise. Results relate only to the samples identified above. This report shall not be reproduced except in full with written approval of Cardinal Laboratories.

Mike Snyder For Celey D. Keene, Lab Director/Quality Manager



PHONE (575) 393-2326 ° 101 E. MARLAND ° HOBBS, NM 88240

Analytical Results For:

CARMONA RESOURCES
 CONNER MOEHRING
 310 W WALL ST, SUITE 500
 MIDLAND TX, 79701
 Fax To:

Received: 05/09/2024
 Reported: 05/14/2024
 Project Name: COPPERHEAD 31 FED 1H
 Project Number: 2356
 Project Location: EDDY COUNTY, NEW MEXICO

Sampling Date: 05/08/2024
 Sampling Type: Soil
 Sampling Condition: Cool & Intact
 Sample Received By: Shalyn Rodriguez

Sample ID: S - 3 (2') (H242518-11)

BTEx 8021B		mg/kg		Analyzed By: MS					
Analyte	Result	Reporting Limit	Analyzed	Method Blank	BS	% Recovery	True Value QC	RPD	Qualifier
Benzene*	<0.050	0.050	05/13/2024	ND	2.08	104	2.00	1.90	
Toluene*	<0.050	0.050	05/13/2024	ND	2.05	102	2.00	1.99	
Ethylbenzene*	<0.050	0.050	05/13/2024	ND	2.01	100	2.00	1.82	
Total Xylenes*	<0.150	0.150	05/13/2024	ND	5.90	98.3	6.00	2.14	
Total BTEX	<0.300	0.300	05/13/2024	ND					

Surrogate: 4-Bromofluorobenzene (PID) 83.6 % 71.5-134

Chloride, SM4500Cl-B		mg/kg		Analyzed By: AC					
Analyte	Result	Reporting Limit	Analyzed	Method Blank	BS	% Recovery	True Value QC	RPD	Qualifier
Chloride	65.6	16.0	05/10/2024	ND	400	100	400	3.92	

TPH 8015M		mg/kg		Analyzed By: MS					
Analyte	Result	Reporting Limit	Analyzed	Method Blank	BS	% Recovery	True Value QC	RPD	Qualifier
GRO C6-C10*	<10.0	10.0	05/10/2024	ND	190	94.9	200	2.04	
DRO >C10-C28*	<10.0	10.0	05/10/2024	ND	187	93.5	200	0.00589	
EXT DRO >C28-C36	<10.0	10.0	05/10/2024	ND					

Surrogate: 1-Chlorooctane 109 % 48.2-134

Surrogate: 1-Chlorooctadecane 107 % 49.1-148

Cardinal Laboratories

*=Accredited Analyte

PLEASE NOTE: Liability and Damages. Cardinal's liability and client's exclusive remedy for any claim arising, whether based in contract or tort, shall be limited to the amount paid by client for analyses. All claims, including those for negligence and any other cause whatsoever shall be deemed waived unless made in writing and received by Cardinal within thirty (30) days after completion of the applicable service. In no event shall Cardinal be liable for incidental or consequential damages, including, without limitation, business interruptions, loss of use, or loss of profits incurred by client, its subsidiaries, affiliates or successors arising out of or related to the performance of the services hereunder by Cardinal, regardless of whether such claim is based upon any of the above stated reasons or otherwise. Results relate only to the samples identified above. This report shall not be reproduced except in full with written approval of Cardinal Laboratories.

Mike Snyder For Celey D. Keene, Lab Director/Quality Manager

PHONE (575) 393-2326 ° 101 E. MARLAND ° HOBBS, NM 88240

Notes and Definitions

S-06	The recovery of this surrogate is outside control limits due to sample dilution required from high analyte concentration and/or matrix interference's.
S-04	The surrogate recovery for this sample is outside of established control limits due to a sample matrix effect.
QR-03	The RPD value for the sample duplicate or MS/MSD was outside of QC acceptance limits due to matrix interference. QC batch accepted based on LCS and/or LCSD recovery and/or RPD values.
QM-07	The spike recovery was outside acceptance limits for the MS and/or MSD. The batch was accepted based on acceptable LCS recovery.
ND	Analyte NOT DETECTED at or above the reporting limit
RPD	Relative Percent Difference
**	Samples not received at proper temperature of 6°C or below.
***	Insufficient time to reach temperature.
-	Chloride by SM4500Cl-B does not require samples be received at or below 6°C Samples reported on an as received basis (wet) unless otherwise noted on report

Cardinal Laboratories

*=Accredited Analyte

PLEASE NOTE: Liability and Damages. Cardinal's liability and client's exclusive remedy for any claim arising, whether based in contract or tort, shall be limited to the amount paid by client for analyses. All claims, including those for negligence and any other cause whatsoever shall be deemed waived unless made in writing and received by Cardinal within thirty (30) days after completion of the applicable service. In no event shall Cardinal be liable for incidental or consequential damages, including, without limitation, business interruptions, loss of use, or loss of profits incurred by client, its subsidiaries, affiliates or successors arising out of or related to the performance of the services hereunder by Cardinal, regardless of whether such claim is based upon any of the above stated reasons or otherwise. Results relate only to the samples identified above. This report shall not be reproduced except in full with written approval of Cardinal Laboratories.

A handwritten signature in black ink, appearing to read "Mike Snyder".

Mike Snyder For Celey D. Keene, Lab Director/Quality Manager

Chain of Custody

Work Order No:

1842578

Page 1 of 2

Page 14 of 15

Project Manager:	Conner Moehring	Bill to: (if different)	Carmona Resources
Company Name:	Carmona Resources	Company Name:	
Address:	310 W Wall St Ste 500	Address:	
City, State ZIP:	Midland, TX 79701	City, State ZIP:	
Phone:	432-813-6823	Email:	mcarmona@carmonaresources.com

Work Order Comments	
Program: UST/PST <input type="checkbox"/> PRP <input type="checkbox"/> Brownfields <input type="checkbox"/> IJC <input type="checkbox"/> perfund <input type="checkbox"/>	
State of Project:	
Reporting Level II <input type="checkbox"/> Level III <input type="checkbox"/> ST/UST <input type="checkbox"/> RRP <input type="checkbox"/> Level IV <input type="checkbox"/>	
Deliverables: EDD <input type="checkbox"/> ADAPT <input type="checkbox"/> Other:	

Project Name:		Copperhead 31 Fed 1H		Turn Around		Pres. Code	ANALYSIS REQUEST												Preservative Codes							
Project Number:	2356	<input type="checkbox"/> Routine	<input checked="" type="checkbox"/> Rush	72 Hrs	None: NO		DI Water: H ₂ O																			
Project Location:	Eddy County, New Mexico <th>Due Date:</th> <td colspan="3"></td> <td>Cool: Cool</td> <td>MeOH: Me</td>			Due Date:				Cool: Cool	MeOH: Me																	
Sampler's Name:	GPJ						HCL: HC	HNO ₃ : HN																		
PO #:							H ₂ SO ₄ : H ₂	NaOH: Na																		
SAMPLE RECEIPT				Temp Blank:	Yes <input checked="" type="checkbox"/> No <input type="checkbox"/>	Wet Ice:	Yes <input checked="" type="checkbox"/> No <input type="checkbox"/>	H ₃ PO ₄ : HP																		
Received Intact:	Yes <input checked="" type="checkbox"/> No <input type="checkbox"/>	Thermometer ID:	140			NaHSO ₄ : NABIS																				
Cooler Custody Seals:	Yes <input checked="" type="checkbox"/> No <input type="checkbox"/> N/A	Correction Factor:				Na ₂ S ₂ O ₃ : NaSO ₃																				
Sample Custody Seals:	Yes <input checked="" type="checkbox"/> No <input type="checkbox"/> N/A	Temperature Reading:	3.42			Zn Acetate+NaOH: Zn																				
Total Containers:			Corrected Temperature:				NaOH+Ascorbic Acid: SAPC																			
Sample Identification				Date	Time	Soil	Water	Grab Comp	# of Cont													Sample Comments				
S-1 (0-1')				5/8/2024		X		G	1	X	X	X														
S-1 (1.5')				5/8/2024		X		G	1	X	X	X														
S-1 (2')				5/8/2024		X		G	1	X	X	X														
S-1 (3')				5/8/2024		X		G	1	X	X	X														
S-2 (0-1')				5/8/2024		X		G	1	X	X	X														
S-2 (1.5')				5/8/2024		X		G	1	X	X	X														
S-2 (2')				5/8/2024		X		G	1	X	X	X														
S-2 (3')				5/8/2024		X		G	1	X	X	X														
S-3 (0-1')				5/8/2024		X		G	1	X	X	X														
S-3 (1.5')				5/8/2024		X		G	1	X	X	X														

Work Order No:

4242578

Work Order Comments	
Program: UST/PST <input type="checkbox"/> PRP <input type="checkbox"/> Crownfields <input type="checkbox"/> RC <input type="checkbox"/> perfund <input type="checkbox"/>	
State of Project:	
Reporting: Level II <input type="checkbox"/> Level III <input type="checkbox"/> ST/UST <input type="checkbox"/> RRP <input type="checkbox"/> Level IV <input type="checkbox"/>	
Deliverables: EDD <input type="checkbox"/> ADAPT <input type="checkbox"/> Other:	

[illegible]

Date/Time

[Signature]

59-24 0934

Received by: Original



PHONE (575) 393-2326 ° 101 E. MARLAND ° HOBBS, NM 88240

May 13, 2024

CONNER MOEHRING

CARMONA RESOURCES

310 W WALL ST, SUITE 500

MIDLAND, TX 79701

RE: COPPERHEAD 31 FED 1H

Enclosed are the results of analyses for samples received by the laboratory on 05/09/24 9:26.

Cardinal Laboratories is accredited through Texas NELAP under certificate number T104704398-23-16. Accreditation applies to drinking water, non-potable water and solid and chemical materials. All accredited analytes are denoted by an asterisk (*). For a complete list of accredited analytes and matrices visit the TCEQ website at www.tceq.texas.gov/field/qa/lab_accred_certif.html.

Cardinal Laboratories is accredited through the State of Colorado Department of Public Health and Environment for:

Method EPA 552.2	Haloacetic Acids (HAA-5)
Method EPA 524.2	Total Trihalomethanes (TTHM)
Method EPA 524.4	Regulated VOCs (V1, V2, V3)

Accreditation applies to public drinking water matrices.

This report meets NELAP requirements and is made up of a cover page, analytical results, and a copy of the original chain-of-custody. If you have any questions concerning this report, please feel free to contact me.

Sincerely,

A handwritten signature in black ink that reads "Celey D. Keene". The signature is written in a cursive, flowing style.

Celey D. Keene

Lab Director/Quality Manager



PHONE (575) 393-2326 ° 101 E. MARLAND ° HOBBS, NM 88240

Analytical Results For:

CARMONA RESOURCES
 CONNER MOEHRING
 310 W WALL ST, SUITE 500
 MIDLAND TX, 79701
 Fax To:

Received: 05/09/2024
 Reported: 05/13/2024
 Project Name: COPPERHEAD 31 FED 1H
 Project Number: 2356
 Project Location: EDDY COUNTY, NEW MEXICO

Sampling Date: 05/08/2024
 Sampling Type: Soil
 Sampling Condition: Cool & Intact
 Sample Received By: Shalyn Rodriguez

Sample ID: H - 1 (0-0.5') (H242517-01)

BTX 8021B			mg/kg		Analyzed By: MS				
Analyte	Result	Reporting Limit	Analyzed	Method Blank	BS	% Recovery	True Value QC	RPD	Qualifier
Benzene*	<0.050	0.050	05/10/2024	ND	2.01	101	2.00	1.47	
Toluene*	<0.050	0.050	05/10/2024	ND	1.98	99.1	2.00	1.26	
Ethylbenzene*	<0.050	0.050	05/10/2024	ND	1.95	97.4	2.00	1.40	
Total Xylenes*	<0.150	0.150	05/10/2024	ND	5.70	95.0	6.00	1.38	
Total BTX	<0.300	0.300	05/10/2024	ND					

Surrogate: 4-Bromofluorobenzene (PID) 84.0 % 71.5-134

Chloride, SM4500Cl-B			mg/kg		Analyzed By: AC				
Analyte	Result	Reporting Limit	Analyzed	Method Blank	BS	% Recovery	True Value QC	RPD	Qualifier
Chloride	64.0	16.0	05/10/2024	ND	432	108	400	0.00	

TPH 8015M			mg/kg		Analyzed By: MS				
Analyte	Result	Reporting Limit	Analyzed	Method Blank	BS	% Recovery	True Value QC	RPD	Qualifier
GRO C6-C10*	<10.0	10.0	05/09/2024	ND	194	97.2	200	1.93	
DRO >C10-C28*	<10.0	10.0	05/09/2024	ND	204	102	200	0.836	
EXT DRO >C28-C36	<10.0	10.0	05/09/2024	ND					

Surrogate: 1-Chlorooctane 86.7 % 48.2-134

Surrogate: 1-Chlorooctadecane 87.9 % 49.1-148

Cardinal Laboratories

*=Accredited Analyte

PLEASE NOTE: Liability and Damages. Cardinal's liability and client's exclusive remedy for any claim arising, whether based in contract or tort, shall be limited to the amount paid by client for analyses. All claims, including those for negligence and any other cause whatsoever shall be deemed waived unless made in writing and received by Cardinal within thirty (30) days after completion of the applicable service. In no event shall Cardinal be liable for incidental or consequential damages, including, without limitation, business interruptions, loss of use, or loss of profits incurred by client, its subsidiaries, affiliates or successors arising out of or related to the performance of the services hereunder by Cardinal, regardless of whether such claim is based upon any of the above stated reasons or otherwise. Results relate only to the samples identified above. This report shall not be reproduced except in full with written approval of Cardinal Laboratories.

Celey D. Keene, Lab Director/Quality Manager



PHONE (575) 393-2326 ° 101 E. MARLAND ° HOBBS, NM 88240

Analytical Results For:

CARMONA RESOURCES
 CONNER MOEHRING
 310 W WALL ST, SUITE 500
 MIDLAND TX, 79701
 Fax To:

Received: 05/09/2024
 Reported: 05/13/2024
 Project Name: COPPERHEAD 31 FED 1H
 Project Number: 2356
 Project Location: EDDY COUNTY, NEW MEXICO

Sampling Date: 05/08/2024
 Sampling Type: Soil
 Sampling Condition: Cool & Intact
 Sample Received By: Shalyn Rodriguez

Sample ID: H - 2 (0-0.5') (H242517-02)

BTEx 8021B		mg/kg		Analyzed By: MS						
Analyte	Result	Reporting Limit	Analyzed	Method Blank	BS	% Recovery	True Value QC	RPD	Qualifier	
Benzene*	<0.050	0.050	05/10/2024	ND	2.01	101	2.00	1.47		
Toluene*	<0.050	0.050	05/10/2024	ND	1.98	99.1	2.00	1.26		
Ethylbenzene*	<0.050	0.050	05/10/2024	ND	1.95	97.4	2.00	1.40		
Total Xylenes*	<0.150	0.150	05/10/2024	ND	5.70	95.0	6.00	1.38		
Total BTEX	<0.300	0.300	05/10/2024	ND						

Surrogate: 4-Bromofluorobenzene (PID) 84.8 % 71.5-134

Chloride, SM4500Cl-B		mg/kg		Analyzed By: AC						
Analyte	Result	Reporting Limit	Analyzed	Method Blank	BS	% Recovery	True Value QC	RPD	Qualifier	
Chloride	32.0	16.0	05/10/2024	ND	432	108	400	0.00		

TPH 8015M		mg/kg		Analyzed By: MS					
Analyte	Result	Reporting Limit	Analyzed	Method Blank	BS	% Recovery	True Value QC	RPD	Qualifier
GRO C6-C10*	<10.0	10.0	05/09/2024	ND	194	97.2	200	1.93	
DRO >C10-C28*	17.9	10.0	05/09/2024	ND	204	102	200	0.836	
EXT DRO >C28-C36	<10.0	10.0	05/09/2024	ND					

Surrogate: 1-Chlorooctane 94.7 % 48.2-134

Surrogate: 1-Chlorooctadecane 96.4 % 49.1-148

Cardinal Laboratories

*=Accredited Analyte

PLEASE NOTE: Liability and Damages. Cardinal's liability and client's exclusive remedy for any claim arising, whether based in contract or tort, shall be limited to the amount paid by client for analyses. All claims, including those for negligence and any other cause whatsoever shall be deemed waived unless made in writing and received by Cardinal within thirty (30) days after completion of the applicable service. In no event shall Cardinal be liable for incidental or consequential damages, including, without limitation, business interruptions, loss of use, or loss of profits incurred by client, its subsidiaries, affiliates or successors arising out of or related to the performance of the services hereunder by Cardinal, regardless of whether such claim is based upon any of the above stated reasons or otherwise. Results relate only to the samples identified above. This report shall not be reproduced except in full with written approval of Cardinal Laboratories.

Celey D. Keene, Lab Director/Quality Manager



PHONE (575) 393-2326 ° 101 E. MARLAND ° HOBBS, NM 88240

Analytical Results For:

CARMONA RESOURCES
 CONNER MOEHRING
 310 W WALL ST, SUITE 500
 MIDLAND TX, 79701
 Fax To:

Received: 05/09/2024
 Reported: 05/13/2024
 Project Name: COPPERHEAD 31 FED 1H
 Project Number: 2356
 Project Location: EDDY COUNTY, NEW MEXICO

Sampling Date: 05/08/2024
 Sampling Type: Soil
 Sampling Condition: Cool & Intact
 Sample Received By: Shalyn Rodriguez

Sample ID: H - 3 (0-0.5') (H242517-03)

BTEx 8021B		mg/kg		Analyzed By: MS						
Analyte	Result	Reporting Limit	Analyzed	Method Blank	BS	% Recovery	True Value QC	RPD	Qualifier	
Benzene*	<0.050	0.050	05/10/2024	ND	2.01	101	2.00	1.47		
Toluene*	<0.050	0.050	05/10/2024	ND	1.98	99.1	2.00	1.26		
Ethylbenzene*	<0.050	0.050	05/10/2024	ND	1.95	97.4	2.00	1.40		
Total Xylenes*	<0.150	0.150	05/10/2024	ND	5.70	95.0	6.00	1.38		
Total BTEX	<0.300	0.300	05/10/2024	ND						

Surrogate: 4-Bromofluorobenzene (PID) 84.0 % 71.5-134

Chloride, SM4500Cl-B		mg/kg		Analyzed By: AC						
Analyte	Result	Reporting Limit	Analyzed	Method Blank	BS	% Recovery	True Value QC	RPD	Qualifier	
Chloride	336	16.0	05/10/2024	ND	432	108	400	0.00		

TPH 8015M		mg/kg		Analyzed By: MS					
Analyte	Result	Reporting Limit	Analyzed	Method Blank	BS	% Recovery	True Value QC	RPD	Qualifier
GRO C6-C10*	<10.0	10.0	05/09/2024	ND	194	97.2	200	1.93	
DRO >C10-C28*	<10.0	10.0	05/09/2024	ND	204	102	200	0.836	
EXT DRO >C28-C36	<10.0	10.0	05/09/2024	ND					

Surrogate: 1-Chlorooctane 89.0 % 48.2-134

Surrogate: 1-Chlorooctadecane 90.7 % 49.1-148

Cardinal Laboratories

*=Accredited Analyte

PLEASE NOTE: Liability and Damages. Cardinal's liability and client's exclusive remedy for any claim arising, whether based in contract or tort, shall be limited to the amount paid by client for analyses. All claims, including those for negligence and any other cause whatsoever shall be deemed waived unless made in writing and received by Cardinal within thirty (30) days after completion of the applicable service. In no event shall Cardinal be liable for incidental or consequential damages, including, without limitation, business interruptions, loss of use, or loss of profits incurred by client, its subsidiaries, affiliates or successors arising out of or related to the performance of the services hereunder by Cardinal, regardless of whether such claim is based upon any of the above stated reasons or otherwise. Results relate only to the samples identified above. This report shall not be reproduced except in full with written approval of Cardinal Laboratories.

Celey D. Keene, Lab Director/Quality Manager



PHONE (575) 393-2326 ° 101 E. MARLAND ° HOBBS, NM 88240

Analytical Results For:

CARMONA RESOURCES
 CONNER MOEHRING
 310 W WALL ST, SUITE 500
 MIDLAND TX, 79701
 Fax To:

Received: 05/09/2024
 Reported: 05/13/2024
 Project Name: COPPERHEAD 31 FED 1H
 Project Number: 2356
 Project Location: EDDY COUNTY, NEW MEXICO

Sampling Date: 05/08/2024
 Sampling Type: Soil
 Sampling Condition: Cool & Intact
 Sample Received By: Shalyn Rodriguez

Sample ID: H - 4 (0-0.5') (H242517-04)

BTEx 8021B		mg/kg		Analyzed By: MS					
Analyte	Result	Reporting Limit	Analyzed	Method Blank	BS	% Recovery	True Value QC	RPD	Qualifier
Benzene*	<0.050	0.050	05/10/2024	ND	2.01	101	2.00	1.47	
Toluene*	<0.050	0.050	05/10/2024	ND	1.98	99.1	2.00	1.26	
Ethylbenzene*	<0.050	0.050	05/10/2024	ND	1.95	97.4	2.00	1.40	
Total Xylenes*	<0.150	0.150	05/10/2024	ND	5.70	95.0	6.00	1.38	
Total BTEX	<0.300	0.300	05/10/2024	ND					

Surrogate: 4-Bromofluorobenzene (PID) 83.3 % 71.5-134

Chloride, SM4500Cl-B		mg/kg		Analyzed By: AC					
Analyte	Result	Reporting Limit	Analyzed	Method Blank	BS	% Recovery	True Value QC	RPD	Qualifier
Chloride	368	16.0	05/10/2024	ND	432	108	400	0.00	

TPH 8015M		mg/kg		Analyzed By: MS					
Analyte	Result	Reporting Limit	Analyzed	Method Blank	BS	% Recovery	True Value QC	RPD	Qualifier
GRO C6-C10*	<10.0	10.0	05/10/2024	ND	194	97.2	200	1.93	
DRO >C10-C28*	2500	10.0	05/10/2024	ND	204	102	200	0.836	
EXT DRO >C28-C36	1060	10.0	05/10/2024	ND					

Surrogate: 1-Chlorooctane 87.6 % 48.2-134

Surrogate: 1-Chlorooctadecane 122 % 49.1-148

Cardinal Laboratories

*=Accredited Analyte

PLEASE NOTE: Liability and Damages. Cardinal's liability and client's exclusive remedy for any claim arising, whether based in contract or tort, shall be limited to the amount paid by client for analyses. All claims, including those for negligence and any other cause whatsoever shall be deemed waived unless made in writing and received by Cardinal within thirty (30) days after completion of the applicable service. In no event shall Cardinal be liable for incidental or consequential damages, including, without limitation, business interruptions, loss of use, or loss of profits incurred by client, its subsidiaries, affiliates or successors arising out of or related to the performance of the services hereunder by Cardinal, regardless of whether such claim is based upon any of the above stated reasons or otherwise. Results relate only to the samples identified above. This report shall not be reproduced except in full with written approval of Cardinal Laboratories.

Celey D. Keene, Lab Director/Quality Manager

PHONE (575) 393-2326 • 101 E. MARLAND • HOBBS, NM 88240

Notes and Definitions

S-04	The surrogate recovery for this sample is outside of established control limits due to a sample matrix effect.
QM-07	The spike recovery was outside acceptance limits for the MS and/or MSD. The batch was accepted based on acceptable LCS recovery.
ND	Analyte NOT DETECTED at or above the reporting limit
RPD	Relative Percent Difference
**	Samples not received at proper temperature of 6°C or below.
***	Insufficient time to reach temperature.
-	Chloride by SM4500Cl-B does not require samples be received at or below 6°C Samples reported on an as received basis (wet) unless otherwise noted on report

Cardinal Laboratories

*=Accredited Analyte

PLEASE NOTE: Liability and Damages. Cardinal's liability and client's exclusive remedy for any claim arising, whether based in contract or tort, shall be limited to the amount paid by client for analyses. All claims, including those for negligence and any other cause whatsoever shall be deemed waived unless made in writing and received by Cardinal within thirty (30) days after completion of the applicable service. In no event shall Cardinal be liable for incidental or consequential damages, including, without limitation, business interruptions, loss of use, or loss of profits incurred by client, its subsidiaries, affiliates or successors arising out of or related to the performance of the services hereunder by Cardinal, regardless of whether such claim is based upon any of the above stated reasons or otherwise. Results relate only to the samples identified above. This report shall not be reproduced except in full with written approval of Cardinal Laboratories.

A handwritten signature in black ink, appearing to read "Celey D. Keene".

Celey D. Keene, Lab Director/Quality Manager

H242511

Page 1 of 1

Page 7 of 7

Comments: Email to Mike Carmona / Mcarmona@carmonaresources.com and Conner Moehring / Cmoehring@carmonaresources.com

Date/Time

Date/Time 5-9-24 0934

Stocking



PHONE (575) 393-2326 ° 101 E. MARLAND ° HOBBS, NM 88240

May 29, 2024

CONNER MOEHRING

CARMONA RESOURCES

310 W WALL ST, SUITE 500

MIDLAND, TX 79701

RE: COPPERHEAD 31 FED 1H

Enclosed are the results of analyses for samples received by the laboratory on 05/28/24 14:22.

Cardinal Laboratories is accredited through Texas NELAP under certificate number T104704398-23-16. Accreditation applies to drinking water, non-potable water and solid and chemical materials. All accredited analytes are denoted by an asterisk (*). For a complete list of accredited analytes and matrices visit the TCEQ website at www.tceq.texas.gov/field/qa/lab_accred_certif.html.

Cardinal Laboratories is accredited through the State of Colorado Department of Public Health and Environment for:

Method EPA 552.2	Haloacetic Acids (HAA-5)
Method EPA 524.2	Total Trihalomethanes (TTHM)
Method EPA 524.4	Regulated VOCs (V1, V2, V3)

Accreditation applies to public drinking water matrices.

This report meets NELAP requirements and is made up of a cover page, analytical results, and a copy of the original chain-of-custody. If you have any questions concerning this report, please feel free to contact me.

Sincerely,

A handwritten signature in black ink that reads "Celey D. Keene". The signature is written in a cursive style with a large, stylized 'C' and 'K'.

Celey D. Keene

Lab Director/Quality Manager



PHONE (575) 393-2326 ° 101 E. MARLAND ° HOBBS, NM 88240

Analytical Results For:

CARMONA RESOURCES
 CONNER MOEHRING
 310 W WALL ST, SUITE 500
 MIDLAND TX, 79701
 Fax To:

Received: 05/28/2024
 Reported: 05/29/2024
 Project Name: COPPERHEAD 31 FED 1H
 Project Number: 2356
 Project Location: EDDY COUNTY, NEW MEXICO

Sampling Date: 05/23/2024
 Sampling Type: Soil
 Sampling Condition: Cool & Intact
 Sample Received By: Alyssa Parras

Sample ID: CS 1 - (3') (H242947-01)

BTEX 8021B		mg/kg		Analyzed By: MS					
Analyte	Result	Reporting Limit	Analyzed	Method Blank	BS	% Recovery	True Value QC	RPD	Qualifier
Benzene*	<0.050	0.050	05/29/2024	ND	2.04	102	2.00	0.339	
Toluene*	<0.050	0.050	05/29/2024	ND	2.04	102	2.00	0.501	
Ethylbenzene*	<0.050	0.050	05/29/2024	ND	2.00	99.9	2.00	0.802	
Total Xylenes*	<0.150	0.150	05/29/2024	ND	6.27	105	6.00	0.765	
Total BTEX	<0.300	0.300	05/29/2024	ND					

Surrogate: 4-Bromofluorobenzene (PID) 100 % 71.5-134

Chloride, SM4500Cl-B		mg/kg		Analyzed By: CT					
Analyte	Result	Reporting Limit	Analyzed	Method Blank	BS	% Recovery	True Value QC	RPD	Qualifier
Chloride	48.0	16.0	05/29/2024	ND	416	104	400	3.77	

TPH 8015M		mg/kg		Analyzed By: MS					
Analyte	Result	Reporting Limit	Analyzed	Method Blank	BS	% Recovery	True Value QC	RPD	Qualifier
GRO C6-C10*	<10.0	10.0	05/28/2024	ND	210	105	200	1.75	
DRO >C10-C28*	<10.0	10.0	05/28/2024	ND	201	101	200	0.0691	
EXT DRO >C28-C36	<10.0	10.0	05/28/2024	ND					

Surrogate: 1-Chlorooctane 102 % 48.2-134

Surrogate: 1-Chlorooctadecane 111 % 49.1-148

Cardinal Laboratories

*=Accredited Analyte

PLEASE NOTE: Liability and Damages. Cardinal's liability and client's exclusive remedy for any claim arising, whether based in contract or tort, shall be limited to the amount paid by client for analyses. All claims, including those for negligence and any other cause whatsoever shall be deemed waived unless made in writing and received by Cardinal within thirty (30) days after completion of the applicable service. In no event shall Cardinal be liable for incidental or consequential damages, including, without limitation, business interruptions, loss of use, or loss of profits incurred by client, its subsidiaries, affiliates or successors arising out of or related to the performance of the services hereunder by Cardinal, regardless of whether such claim is based upon any of the above stated reasons or otherwise. Results relate only to the samples identified above. This report shall not be reproduced except in full with written approval of Cardinal Laboratories.

Celey D. Keene, Lab Director/Quality Manager



PHONE (575) 393-2326 ° 101 E. MARLAND ° HOBBS, NM 88240

Analytical Results For:

CARMONA RESOURCES
 CONNER MOEHRING
 310 W WALL ST, SUITE 500
 MIDLAND TX, 79701
 Fax To:

Received: 05/28/2024
 Reported: 05/29/2024
 Project Name: COPPERHEAD 31 FED 1H
 Project Number: 2356
 Project Location: EDDY COUNTY, NEW MEXICO

Sampling Date: 05/23/2024
 Sampling Type: Soil
 Sampling Condition: Cool & Intact
 Sample Received By: Alyssa Parras

Sample ID: CS- 2 (3') (H242947-02)

BTEx 8021B		mg/kg		Analyzed By: MS						
Analyte	Result	Reporting Limit	Analyzed	Method Blank	BS	% Recovery	True Value QC	RPD	Qualifier	
Benzene*	<0.050	0.050	05/29/2024	ND	2.04	102	2.00	0.339		
Toluene*	<0.050	0.050	05/29/2024	ND	2.04	102	2.00	0.501		
Ethylbenzene*	<0.050	0.050	05/29/2024	ND	2.00	99.9	2.00	0.802		
Total Xylenes*	<0.150	0.150	05/29/2024	ND	6.27	105	6.00	0.765		
Total BTEX	<0.300	0.300	05/29/2024	ND						

Surrogate: 4-Bromofluorobenzene (PID) 101 % 71.5-134

Chloride, SM4500Cl-B		mg/kg		Analyzed By: HM						
Analyte	Result	Reporting Limit	Analyzed	Method Blank	BS	% Recovery	True Value QC	RPD	Qualifier	
Chloride	32.0	16.0	05/29/2024	ND	416	104	400	3.77		

TPH 8015M		mg/kg		Analyzed By: MS					
Analyte	Result	Reporting Limit	Analyzed	Method Blank	BS	% Recovery	True Value QC	RPD	Qualifier
GRO C6-C10*	<10.0	10.0	05/28/2024	ND	210	105	200	1.75	
DRO >C10-C28*	<10.0	10.0	05/28/2024	ND	201	101	200	0.0691	
EXT DRO >C28-C36	<10.0	10.0	05/28/2024	ND					

Surrogate: 1-Chlorooctane 99.8 % 48.2-134

Surrogate: 1-Chlorooctadecane 109 % 49.1-148

Cardinal Laboratories

*=Accredited Analyte

PLEASE NOTE: Liability and Damages. Cardinal's liability and client's exclusive remedy for any claim arising, whether based in contract or tort, shall be limited to the amount paid by client for analyses. All claims, including those for negligence and any other cause whatsoever shall be deemed waived unless made in writing and received by Cardinal within thirty (30) days after completion of the applicable service. In no event shall Cardinal be liable for incidental or consequential damages, including, without limitation, business interruptions, loss of use, or loss of profits incurred by client, its subsidiaries, affiliates or successors arising out of or related to the performance of the services hereunder by Cardinal, regardless of whether such claim is based upon any of the above stated reasons or otherwise. Results relate only to the samples identified above. This report shall not be reproduced except in full with written approval of Cardinal Laboratories.

Celey D. Keene, Lab Director/Quality Manager



PHONE (575) 393-2326 ° 101 E. MARLAND ° HOBBS, NM 88240

Analytical Results For:

CARMONA RESOURCES
 CONNER MOEHRING
 310 W WALL ST, SUITE 500
 MIDLAND TX, 79701
 Fax To:

Received: 05/28/2024
 Reported: 05/29/2024
 Project Name: COPPERHEAD 31 FED 1H
 Project Number: 2356
 Project Location: EDDY COUNTY, NEW MEXICO

Sampling Date: 05/23/2024
 Sampling Type: Soil
 Sampling Condition: Cool & Intact
 Sample Received By: Alyssa Parras

Sample ID: CS- 3 (1.5') (H242947-03)

BTEx 8021B		mg/kg		Analyzed By: MS					
Analyte	Result	Reporting Limit	Analyzed	Method Blank	BS	% Recovery	True Value QC	RPD	Qualifier
Benzene*	<0.050	0.050	05/29/2024	ND	2.04	102	2.00	0.339	
Toluene*	<0.050	0.050	05/29/2024	ND	2.04	102	2.00	0.501	
Ethylbenzene*	<0.050	0.050	05/29/2024	ND	2.00	99.9	2.00	0.802	
Total Xylenes*	<0.150	0.150	05/29/2024	ND	6.27	105	6.00	0.765	
Total BTEx	<0.300	0.300	05/29/2024	ND					

Surrogate: 4-Bromofluorobenzene (PID) 100 % 71.5-134

Chloride, SM4500Cl-B		mg/kg		Analyzed By: HM						
Analyte	Result	Reporting Limit	Analyzed	Method Blank	BS	% Recovery	True Value QC	RPD	Qualifier	
Chloride	48.0	16.0	05/29/2024	ND	416	104	400	3.77		

TPH 8015M		mg/kg		Analyzed By: MS					
Analyte	Result	Reporting Limit	Analyzed	Method Blank	BS	% Recovery	True Value QC	RPD	Qualifier
GRO C6-C10*	<10.0	10.0	05/28/2024	ND	210	105	200	1.75	
DRO >C10-C28*	<10.0	10.0	05/28/2024	ND	201	101	200	0.0691	
EXT DRO >C28-C36	<10.0	10.0	05/28/2024	ND					

Surrogate: 1-Chlorooctane 97.3 % 48.2-134

Surrogate: 1-Chlorooctadecane 105 % 49.1-148

Cardinal Laboratories

*=Accredited Analyte

PLEASE NOTE: Liability and Damages. Cardinal's liability and client's exclusive remedy for any claim arising, whether based in contract or tort, shall be limited to the amount paid by client for analyses. All claims, including those for negligence and any other cause whatsoever shall be deemed waived unless made in writing and received by Cardinal within thirty (30) days after completion of the applicable service. In no event shall Cardinal be liable for incidental or consequential damages, including, without limitation, business interruptions, loss of use, or loss of profits incurred by client, its subsidiaries, affiliates or successors arising out of or related to the performance of the services hereunder by Cardinal, regardless of whether such claim is based upon any of the above stated reasons or otherwise. Results relate only to the samples identified above. This report shall not be reproduced except in full with written approval of Cardinal Laboratories.

Celey D. Keene, Lab Director/Quality Manager



PHONE (575) 393-2326 ° 101 E. MARLAND ° HOBBS, NM 88240

Analytical Results For:

CARMONA RESOURCES
 CONNER MOEHRING
 310 W WALL ST, SUITE 500
 MIDLAND TX, 79701
 Fax To:

Received: 05/28/2024
 Reported: 05/29/2024
 Project Name: COPPERHEAD 31 FED 1H
 Project Number: 2356
 Project Location: EDDY COUNTY, NEW MEXICO

Sampling Date: 05/23/2024
 Sampling Type: Soil
 Sampling Condition: Cool & Intact
 Sample Received By: Alyssa Parras

Sample ID: CS- 4 (1.5') (H242947-04)

BTX 8021B		mg/kg		Analyzed By: MS					
Analyte	Result	Reporting Limit	Analyzed	Method Blank	BS	% Recovery	True Value QC	RPD	Qualifier
Benzene*	<0.050	0.050	05/29/2024	ND	2.04	102	2.00	0.339	
Toluene*	<0.050	0.050	05/29/2024	ND	2.04	102	2.00	0.501	
Ethylbenzene*	<0.050	0.050	05/29/2024	ND	2.00	99.9	2.00	0.802	
Total Xylenes*	<0.150	0.150	05/29/2024	ND	6.27	105	6.00	0.765	
Total BTX	<0.300	0.300	05/29/2024	ND					

Surrogate: 4-Bromofluorobenzene (PID) 100 % 71.5-134

Chloride, SM4500Cl-B		mg/kg		Analyzed By: HM					
Analyte	Result	Reporting Limit	Analyzed	Method Blank	BS	% Recovery	True Value QC	RPD	Qualifier
Chloride	48.0	16.0	05/29/2024	ND	416	104	400	3.77	

TPH 8015M		mg/kg		Analyzed By: MS					
Analyte	Result	Reporting Limit	Analyzed	Method Blank	BS	% Recovery	True Value QC	RPD	Qualifier
GRO C6-C10*	<10.0	10.0	05/28/2024	ND	210	105	200	1.75	
DRO >C10-C28*	<10.0	10.0	05/28/2024	ND	201	101	200	0.0691	
EXT DRO >C28-C36	<10.0	10.0	05/28/2024	ND					

Surrogate: 1-Chlorooctane 89.1 % 48.2-134

Surrogate: 1-Chlorooctadecane 95.2 % 49.1-148

Cardinal Laboratories

*=Accredited Analyte

PLEASE NOTE: Liability and Damages. Cardinal's liability and client's exclusive remedy for any claim arising, whether based in contract or tort, shall be limited to the amount paid by client for analyses. All claims, including those for negligence and any other cause whatsoever shall be deemed waived unless made in writing and received by Cardinal within thirty (30) days after completion of the applicable service. In no event shall Cardinal be liable for incidental or consequential damages, including, without limitation, business interruptions, loss of use, or loss of profits incurred by client, its subsidiaries, affiliates or successors arising out of or related to the performance of the services hereunder by Cardinal, regardless of whether such claim is based upon any of the above stated reasons or otherwise. Results relate only to the samples identified above. This report shall not be reproduced except in full with written approval of Cardinal Laboratories.

Celey D. Keene, Lab Director/Quality Manager



PHONE (575) 393-2326 ° 101 E. MARLAND ° HOBBS, NM 88240

Analytical Results For:

CARMONA RESOURCES
 CONNER MOEHRING
 310 W WALL ST, SUITE 500
 MIDLAND TX, 79701
 Fax To:

Received: 05/28/2024
 Reported: 05/29/2024
 Project Name: COPPERHEAD 31 FED 1H
 Project Number: 2356
 Project Location: EDDY COUNTY, NEW MEXICO

Sampling Date: 05/23/2024
 Sampling Type: Soil
 Sampling Condition: Cool & Intact
 Sample Received By: Alyssa Parras

Sample ID: CS- 5 (1.5') (H242947-05)

BTX 8021B		mg/kg		Analyzed By: MS					
Analyte	Result	Reporting Limit	Analyzed	Method Blank	BS	% Recovery	True Value QC	RPD	Qualifier
Benzene*	<0.050	0.050	05/28/2024	ND	1.97	98.4	2.00	1.22	
Toluene*	<0.050	0.050	05/28/2024	ND	1.91	95.6	2.00	1.40	
Ethylbenzene*	<0.050	0.050	05/28/2024	ND	1.92	96.1	2.00	2.12	
Total Xylenes*	<0.150	0.150	05/28/2024	ND	5.54	92.4	6.00	2.14	
Total BTX	<0.300	0.300	05/28/2024	ND					

Surrogate: 4-Bromofluorobenzene (PID) 91.4 % 71.5-134

Chloride, SM4500CI-B		mg/kg		Analyzed By: HM					
Analyte	Result	Reporting Limit	Analyzed	Method Blank	BS	% Recovery	True Value QC	RPD	Qualifier
Chloride	32.0	16.0	05/29/2024	ND	416	104	400	3.77	

TPH 8015M		mg/kg		Analyzed By: MS					
Analyte	Result	Reporting Limit	Analyzed	Method Blank	BS	% Recovery	True Value QC	RPD	Qualifier
GRO C6-C10*	<10.0	10.0	05/28/2024	ND	210	105	200	1.75	
DRO >C10-C28*	<10.0	10.0	05/28/2024	ND	201	101	200	0.0691	
EXT DRO >C28-C36	<10.0	10.0	05/28/2024	ND					

Surrogate: 1-Chlorooctane 86.1 % 48.2-134

Surrogate: 1-Chlorooctadecane 93.7 % 49.1-148

Cardinal Laboratories

*=Accredited Analyte

PLEASE NOTE: Liability and Damages. Cardinal's liability and client's exclusive remedy for any claim arising, whether based in contract or tort, shall be limited to the amount paid by client for analyses. All claims, including those for negligence and any other cause whatsoever shall be deemed waived unless made in writing and received by Cardinal within thirty (30) days after completion of the applicable service. In no event shall Cardinal be liable for incidental or consequential damages, including, without limitation, business interruptions, loss of use, or loss of profits incurred by client, its subsidiaries, affiliates or successors arising out of or related to the performance of the services hereunder by Cardinal, regardless of whether such claim is based upon any of the above stated reasons or otherwise. Results relate only to the samples identified above. This report shall not be reproduced except in full with written approval of Cardinal Laboratories.

Celey D. Keene, Lab Director/Quality Manager



PHONE (575) 393-2326 ° 101 E. MARLAND ° HOBBS, NM 88240

Analytical Results For:

CARMONA RESOURCES
 CONNER MOEHRING
 310 W WALL ST, SUITE 500
 MIDLAND TX, 79701
 Fax To:

Received: 05/28/2024
 Reported: 05/29/2024
 Project Name: COPPERHEAD 31 FED 1H
 Project Number: 2356
 Project Location: EDDY COUNTY, NEW MEXICO

Sampling Date: 05/23/2024
 Sampling Type: Soil
 Sampling Condition: Cool & Intact
 Sample Received By: Alyssa Parras

Sample ID: CS - 6 (1.5') (H242947-06)

BTEx 8021B		mg/kg		Analyzed By: MS					
Analyte	Result	Reporting Limit	Analyzed	Method Blank	BS	% Recovery	True Value QC	RPD	Qualifier
Benzene*	<0.050	0.050	05/28/2024	ND	1.97	98.4	2.00	1.22	
Toluene*	<0.050	0.050	05/28/2024	ND	1.91	95.6	2.00	1.40	
Ethylbenzene*	<0.050	0.050	05/28/2024	ND	1.92	96.1	2.00	2.12	
Total Xylenes*	<0.150	0.150	05/28/2024	ND	5.54	92.4	6.00	2.14	
Total BTEX	<0.300	0.300	05/28/2024	ND					

Surrogate: 4-Bromofluorobenzene (PID) 91.0 % 71.5-134

Chloride, SM4500Cl-B		mg/kg		Analyzed By: HM					
Analyte	Result	Reporting Limit	Analyzed	Method Blank	BS	% Recovery	True Value QC	RPD	Qualifier
Chloride	32.0	16.0	05/29/2024	ND	416	104	400	3.77	

TPH 8015M		mg/kg		Analyzed By: MS					
Analyte	Result	Reporting Limit	Analyzed	Method Blank	BS	% Recovery	True Value QC	RPD	Qualifier
GRO C6-C10*	<10.0	10.0	05/28/2024	ND	210	105	200	1.75	
DRO >C10-C28*	<10.0	10.0	05/28/2024	ND	201	101	200	0.0691	
EXT DRO >C28-C36	<10.0	10.0	05/28/2024	ND					

Surrogate: 1-Chlorooctane 91.1 % 48.2-134

Surrogate: 1-Chlorooctadecane 96.4 % 49.1-148

Cardinal Laboratories

*=Accredited Analyte

PLEASE NOTE: Liability and Damages. Cardinal's liability and client's exclusive remedy for any claim arising, whether based in contract or tort, shall be limited to the amount paid by client for analyses. All claims, including those for negligence and any other cause whatsoever shall be deemed waived unless made in writing and received by Cardinal within thirty (30) days after completion of the applicable service. In no event shall Cardinal be liable for incidental or consequential damages, including, without limitation, business interruptions, loss of use, or loss of profits incurred by client, its subsidiaries, affiliates or successors arising out of or related to the performance of the services hereunder by Cardinal, regardless of whether such claim is based upon any of the above stated reasons or otherwise. Results relate only to the samples identified above. This report shall not be reproduced except in full with written approval of Cardinal Laboratories.

Celey D. Keene, Lab Director/Quality Manager



PHONE (575) 393-2326 ° 101 E. MARLAND ° HOBBS, NM 88240

Analytical Results For:

CARMONA RESOURCES
 CONNER MOEHRING
 310 W WALL ST, SUITE 500
 MIDLAND TX, 79701
 Fax To:

Received: 05/28/2024
 Reported: 05/29/2024
 Project Name: COPPERHEAD 31 FED 1H
 Project Number: 2356
 Project Location: EDDY COUNTY, NEW MEXICO

Sampling Date: 05/23/2024
 Sampling Type: Soil
 Sampling Condition: Cool & Intact
 Sample Received By: Alyssa Parras

Sample ID: CS - 7 (2') (H242947-07)

BTEx 8021B		mg/kg		Analyzed By: MS					
Analyte	Result	Reporting Limit	Analyzed	Method Blank	BS	% Recovery	True Value QC	RPD	Qualifier
Benzene*	<0.050	0.050	05/28/2024	ND	1.97	98.4	2.00	1.22	
Toluene*	<0.050	0.050	05/28/2024	ND	1.91	95.6	2.00	1.40	
Ethylbenzene*	<0.050	0.050	05/28/2024	ND	1.92	96.1	2.00	2.12	
Total Xylenes*	<0.150	0.150	05/28/2024	ND	5.54	92.4	6.00	2.14	
Total BTEX	<0.300	0.300	05/28/2024	ND					

Surrogate: 4-Bromofluorobenzene (PID) 91.1 % 71.5-134

Chloride, SM4500Cl-B		mg/kg		Analyzed By: HM					
Analyte	Result	Reporting Limit	Analyzed	Method Blank	BS	% Recovery	True Value QC	RPD	Qualifier
Chloride	32.0	16.0	05/29/2024	ND	416	104	400	3.77	

TPH 8015M		mg/kg		Analyzed By: MS					
Analyte	Result	Reporting Limit	Analyzed	Method Blank	BS	% Recovery	True Value QC	RPD	Qualifier
GRO C6-C10*	<10.0	10.0	05/28/2024	ND	210	105	200	1.75	
DRO >C10-C28*	<10.0	10.0	05/28/2024	ND	201	101	200	0.0691	
EXT DRO >C28-C36	<10.0	10.0	05/28/2024	ND					

Surrogate: 1-Chlorooctane 94.3 % 48.2-134

Surrogate: 1-Chlorooctadecane 99.1 % 49.1-148

Cardinal Laboratories

*=Accredited Analyte

PLEASE NOTE: Liability and Damages. Cardinal's liability and client's exclusive remedy for any claim arising, whether based in contract or tort, shall be limited to the amount paid by client for analyses. All claims, including those for negligence and any other cause whatsoever shall be deemed waived unless made in writing and received by Cardinal within thirty (30) days after completion of the applicable service. In no event shall Cardinal be liable for incidental or consequential damages, including, without limitation, business interruptions, loss of use, or loss of profits incurred by client, its subsidiaries, affiliates or successors arising out of or related to the performance of the services hereunder by Cardinal, regardless of whether such claim is based upon any of the above stated reasons or otherwise. Results relate only to the samples identified above. This report shall not be reproduced except in full with written approval of Cardinal Laboratories.

Celey D. Keene, Lab Director/Quality Manager



PHONE (575) 393-2326 ° 101 E. MARLAND ° HOBBS, NM 88240

Analytical Results For:

CARMONA RESOURCES
 CONNER MOEHRING
 310 W WALL ST, SUITE 500
 MIDLAND TX, 79701
 Fax To:

Received: 05/28/2024
 Reported: 05/29/2024
 Project Name: COPPERHEAD 31 FED 1H
 Project Number: 2356
 Project Location: EDDY COUNTY, NEW MEXICO

Sampling Date: 05/23/2024
 Sampling Type: Soil
 Sampling Condition: Cool & Intact
 Sample Received By: Alyssa Parras

Sample ID: CS - 8 (2') (H242947-08)

BTEx 8021B		mg/kg		Analyzed By: MS					
Analyte	Result	Reporting Limit	Analyzed	Method Blank	BS	% Recovery	True Value QC	RPD	Qualifier
Benzene*	<0.050	0.050	05/28/2024	ND	1.97	98.4	2.00	1.22	
Toluene*	<0.050	0.050	05/28/2024	ND	1.91	95.6	2.00	1.40	
Ethylbenzene*	<0.050	0.050	05/28/2024	ND	1.92	96.1	2.00	2.12	
Total Xylenes*	<0.150	0.150	05/28/2024	ND	5.54	92.4	6.00	2.14	
Total BTEX	<0.300	0.300	05/28/2024	ND					

Surrogate: 4-Bromofluorobenzene (PID) 91.4 % 71.5-134

Chloride, SM4500Cl-B		mg/kg		Analyzed By: HM					
Analyte	Result	Reporting Limit	Analyzed	Method Blank	BS	% Recovery	True Value QC	RPD	Qualifier
Chloride	32.0	16.0	05/29/2024	ND	416	104	400	3.77	

TPH 8015M		mg/kg		Analyzed By: MS					
Analyte	Result	Reporting Limit	Analyzed	Method Blank	BS	% Recovery	True Value QC	RPD	Qualifier
GRO C6-C10*	<10.0	10.0	05/28/2024	ND	210	105	200	1.75	
DRO >C10-C28*	<10.0	10.0	05/28/2024	ND	201	101	200	0.0691	
EXT DRO >C28-C36	<10.0	10.0	05/28/2024	ND					

Surrogate: 1-Chlorooctane 83.7 % 48.2-134

Surrogate: 1-Chlorooctadecane 90.3 % 49.1-148

Cardinal Laboratories

*=Accredited Analyte

PLEASE NOTE: Liability and Damages. Cardinal's liability and client's exclusive remedy for any claim arising, whether based in contract or tort, shall be limited to the amount paid by client for analyses. All claims, including those for negligence and any other cause whatsoever shall be deemed waived unless made in writing and received by Cardinal within thirty (30) days after completion of the applicable service. In no event shall Cardinal be liable for incidental or consequential damages, including, without limitation, business interruptions, loss of use, or loss of profits incurred by client, its subsidiaries, affiliates or successors arising out of or related to the performance of the services hereunder by Cardinal, regardless of whether such claim is based upon any of the above stated reasons or otherwise. Results relate only to the samples identified above. This report shall not be reproduced except in full with written approval of Cardinal Laboratories.

Celey D. Keene, Lab Director/Quality Manager



PHONE (575) 393-2326 ° 101 E. MARLAND ° HOBBS, NM 88240

Analytical Results For:

CARMONA RESOURCES
 CONNER MOEHRING
 310 W WALL ST, SUITE 500
 MIDLAND TX, 79701
 Fax To:

Received: 05/28/2024
 Reported: 05/29/2024
 Project Name: COPPERHEAD 31 FED 1H
 Project Number: 2356
 Project Location: EDDY COUNTY, NEW MEXICO

Sampling Date: 05/23/2024
 Sampling Type: Soil
 Sampling Condition: Cool & Intact
 Sample Received By: Alyssa Parras

Sample ID: SW - 1 (3') (H242947-09)

BTEx 8021B		mg/kg		Analyzed By: MS						
Analyte	Result	Reporting Limit	Analyzed	Method Blank	BS	% Recovery	True Value QC	RPD	Qualifier	
Benzene*	<0.050	0.050	05/28/2024	ND	1.97	98.4	2.00	1.22		
Toluene*	<0.050	0.050	05/28/2024	ND	1.91	95.6	2.00	1.40		
Ethylbenzene*	<0.050	0.050	05/28/2024	ND	1.92	96.1	2.00	2.12		
Total Xylenes*	<0.150	0.150	05/28/2024	ND	5.54	92.4	6.00	2.14		
Total BTEX	<0.300	0.300	05/28/2024	ND						

Surrogate: 4-Bromofluorobenzene (PID) 91.1 % 71.5-134

Chloride, SM4500Cl-B		mg/kg		Analyzed By: HM					
Analyte	Result	Reporting Limit	Analyzed	Method Blank	BS	% Recovery	True Value QC	RPD	Qualifier
Chloride	32.0	16.0	05/29/2024	ND	416	104	400	3.77	

TPH 8015M		mg/kg		Analyzed By: MS					
Analyte	Result	Reporting Limit	Analyzed	Method Blank	BS	% Recovery	True Value QC	RPD	Qualifier
GRO C6-C10*	<10.0	10.0	05/28/2024	ND	210	105	200	1.75	
DRO >C10-C28*	<10.0	10.0	05/28/2024	ND	201	101	200	0.0691	
EXT DRO >C28-C36	<10.0	10.0	05/28/2024	ND					

Surrogate: 1-Chlorooctane 88.0 % 48.2-134

Surrogate: 1-Chlorooctadecane 94.5 % 49.1-148

Cardinal Laboratories

*=Accredited Analyte

PLEASE NOTE: Liability and Damages. Cardinal's liability and client's exclusive remedy for any claim arising, whether based in contract or tort, shall be limited to the amount paid by client for analyses. All claims, including those for negligence and any other cause whatsoever shall be deemed waived unless made in writing and received by Cardinal within thirty (30) days after completion of the applicable service. In no event shall Cardinal be liable for incidental or consequential damages, including, without limitation, business interruptions, loss of use, or loss of profits incurred by client, its subsidiaries, affiliates or successors arising out of or related to the performance of the services hereunder by Cardinal, regardless of whether such claim is based upon any of the above stated reasons or otherwise. Results relate only to the samples identified above. This report shall not be reproduced except in full with written approval of Cardinal Laboratories.

Celey D. Keene, Lab Director/Quality Manager



PHONE (575) 393-2326 ° 101 E. MARLAND ° HOBBS, NM 88240

Analytical Results For:

CARMONA RESOURCES
 CONNER MOEHRING
 310 W WALL ST, SUITE 500
 MIDLAND TX, 79701
 Fax To:

Received: 05/28/2024
 Reported: 05/29/2024
 Project Name: COPPERHEAD 31 FED 1H
 Project Number: 2356
 Project Location: EDDY COUNTY, NEW MEXICO

Sampling Date: 05/23/2024
 Sampling Type: Soil
 Sampling Condition: Cool & Intact
 Sample Received By: Alyssa Parras

Sample ID: SW - 2 (3') (H242947-10)

BTEx 8021B			mg/kg		Analyzed By: MS				
Analyte	Result	Reporting Limit	Analyzed	Method Blank	BS	% Recovery	True Value QC	RPD	Qualifier
Benzene*	<0.050	0.050	05/28/2024	ND	1.97	98.4	2.00	1.22	
Toluene*	<0.050	0.050	05/28/2024	ND	1.91	95.6	2.00	1.40	
Ethylbenzene*	<0.050	0.050	05/28/2024	ND	1.92	96.1	2.00	2.12	
Total Xylenes*	<0.150	0.150	05/28/2024	ND	5.54	92.4	6.00	2.14	
Total BTEX	<0.300	0.300	05/28/2024	ND					

Surrogate: 4-Bromofluorobenzene (PID) 90.8 % 71.5-134

Chloride, SM4500Cl-B		mg/kg		Analyzed By: HM					
Analyte	Result	Reporting Limit	Analyzed	Method Blank	BS	% Recovery	True Value QC	RPD	Qualifier
Chloride	48.0	16.0	05/29/2024	ND	416	104	400	3.77	

TPH 8015M		mg/kg		Analyzed By: MS					
Analyte	Result	Reporting Limit	Analyzed	Method Blank	BS	% Recovery	True Value QC	RPD	Qualifier
GRO C6-C10*	<10.0	10.0	05/28/2024	ND	210	105	200	1.75	
DRO >C10-C28*	<10.0	10.0	05/28/2024	ND	201	101	200	0.0691	
EXT DRO >C28-C36	<10.0	10.0	05/28/2024	ND					

Surrogate: 1-Chlorooctane 93.6 % 48.2-134

Surrogate: 1-Chlorooctadecane 101 % 49.1-148

Cardinal Laboratories

*=Accredited Analyte

PLEASE NOTE: Liability and Damages. Cardinal's liability and client's exclusive remedy for any claim arising, whether based in contract or tort, shall be limited to the amount paid by client for analyses. All claims, including those for negligence and any other cause whatsoever shall be deemed waived unless made in writing and received by Cardinal within thirty (30) days after completion of the applicable service. In no event shall Cardinal be liable for incidental or consequential damages, including, without limitation, business interruptions, loss of use, or loss of profits incurred by client, its subsidiaries, affiliates or successors arising out of or related to the performance of the services hereunder by Cardinal, regardless of whether such claim is based upon any of the above stated reasons or otherwise. Results relate only to the samples identified above. This report shall not be reproduced except in full with written approval of Cardinal Laboratories.

Celey D. Keene, Lab Director/Quality Manager



PHONE (575) 393-2326 ° 101 E. MARLAND ° HOBBS, NM 88240

Analytical Results For:

CARMONA RESOURCES
 CONNER MOEHRING
 310 W WALL ST, SUITE 500
 MIDLAND TX, 79701
 Fax To:

Received: 05/28/2024
 Reported: 05/29/2024
 Project Name: COPPERHEAD 31 FED 1H
 Project Number: 2356
 Project Location: EDDY COUNTY, NEW MEXICO

Sampling Date: 05/23/2024
 Sampling Type: Soil
 Sampling Condition: Cool & Intact
 Sample Received By: Alyssa Parras

Sample ID: SW - 3 (3') (H242947-11)

BTX 8021B			mg/kg		Analyzed By: MS				
Analyte	Result	Reporting Limit	Analyzed	Method Blank	BS	% Recovery	True Value QC	RPD	Qualifier
Benzene*	<0.050	0.050	05/28/2024	ND	1.97	98.4	2.00	1.22	
Toluene*	<0.050	0.050	05/28/2024	ND	1.91	95.6	2.00	1.40	
Ethylbenzene*	<0.050	0.050	05/28/2024	ND	1.92	96.1	2.00	2.12	
Total Xylenes*	<0.150	0.150	05/28/2024	ND	5.54	92.4	6.00	2.14	
Total BTX	<0.300	0.300	05/28/2024	ND					

Surrogate: 4-Bromofluorobenzene (PID) 90.6 % 71.5-134

Chloride, SM4500Cl-B		mg/kg		Analyzed By: HM					
Analyte	Result	Reporting Limit	Analyzed	Method Blank	BS	% Recovery	True Value QC	RPD	Qualifier
Chloride	48.0	16.0	05/29/2024	ND	416	104	400	3.77	

TPH 8015M		mg/kg		Analyzed By: MS					
Analyte	Result	Reporting Limit	Analyzed	Method Blank	BS	% Recovery	True Value QC	RPD	Qualifier
GRO C6-C10*	<10.0	10.0	05/28/2024	ND	210	105	200	1.75	
DRO >C10-C28*	<10.0	10.0	05/28/2024	ND	201	101	200	0.0691	
EXT DRO >C28-C36	<10.0	10.0	05/28/2024	ND					

Surrogate: 1-Chlorooctane 88.4 % 48.2-134

Surrogate: 1-Chlorooctadecane 94.3 % 49.1-148

Cardinal Laboratories

*=Accredited Analyte

PLEASE NOTE: Liability and Damages. Cardinal's liability and client's exclusive remedy for any claim arising, whether based in contract or tort, shall be limited to the amount paid by client for analyses. All claims, including those for negligence and any other cause whatsoever shall be deemed waived unless made in writing and received by Cardinal within thirty (30) days after completion of the applicable service. In no event shall Cardinal be liable for incidental or consequential damages, including, without limitation, business interruptions, loss of use, or loss of profits incurred by client, its subsidiaries, affiliates or successors arising out of or related to the performance of the services hereunder by Cardinal, regardless of whether such claim is based upon any of the above stated reasons or otherwise. Results relate only to the samples identified above. This report shall not be reproduced except in full with written approval of Cardinal Laboratories.

Celey D. Keene, Lab Director/Quality Manager



PHONE (575) 393-2326 ° 101 E. MARLAND ° HOBBS, NM 88240

Analytical Results For:

CARMONA RESOURCES
 CONNER MOEHRING
 310 W WALL ST, SUITE 500
 MIDLAND TX, 79701
 Fax To:

Received: 05/28/2024
 Reported: 05/29/2024
 Project Name: COPPERHEAD 31 FED 1H
 Project Number: 2356
 Project Location: EDDY COUNTY, NEW MEXICO

Sampling Date: 05/23/2024
 Sampling Type: Soil
 Sampling Condition: Cool & Intact
 Sample Received By: Alyssa Parras

Sample ID: SW - 4 (1.5') (H242947-12)

BTEx 8021B			mg/kg		Analyzed By: MS				
Analyte	Result	Reporting Limit	Analyzed	Method Blank	BS	% Recovery	True Value QC	RPD	Qualifier
Benzene*	<0.050	0.050	05/28/2024	ND	1.97	98.4	2.00	1.22	
Toluene*	<0.050	0.050	05/28/2024	ND	1.91	95.6	2.00	1.40	
Ethylbenzene*	<0.050	0.050	05/28/2024	ND	1.92	96.1	2.00	2.12	
Total Xylenes*	<0.150	0.150	05/28/2024	ND	5.54	92.4	6.00	2.14	
Total BTEX	<0.300	0.300	05/28/2024	ND					

Surrogate: 4-Bromofluorobenzene (PID) 90.0 % 71.5-134

Chloride, SM4500Cl-B		mg/kg		Analyzed By: HM					
Analyte	Result	Reporting Limit	Analyzed	Method Blank	BS	% Recovery	True Value QC	RPD	Qualifier
Chloride	32.0	16.0	05/29/2024	ND	416	104	400	3.77	

TPH 8015M		mg/kg		Analyzed By: MS					
Analyte	Result	Reporting Limit	Analyzed	Method Blank	BS	% Recovery	True Value QC	RPD	Qualifier
GRO C6-C10*	<10.0	10.0	05/28/2024	ND	210	105	200	1.75	
DRO >C10-C28*	<10.0	10.0	05/28/2024	ND	201	101	200	0.0691	
EXT DRO >C28-C36	<10.0	10.0	05/28/2024	ND					

Surrogate: 1-Chlorooctane 95.2 % 48.2-134

Surrogate: 1-Chlorooctadecane 102 % 49.1-148

Cardinal Laboratories

*=Accredited Analyte

PLEASE NOTE: Liability and Damages. Cardinal's liability and client's exclusive remedy for any claim arising, whether based in contract or tort, shall be limited to the amount paid by client for analyses. All claims, including those for negligence and any other cause whatsoever shall be deemed waived unless made in writing and received by Cardinal within thirty (30) days after completion of the applicable service. In no event shall Cardinal be liable for incidental or consequential damages, including, without limitation, business interruptions, loss of use, or loss of profits incurred by client, its subsidiaries, affiliates or successors arising out of or related to the performance of the services hereunder by Cardinal, regardless of whether such claim is based upon any of the above stated reasons or otherwise. Results relate only to the samples identified above. This report shall not be reproduced except in full with written approval of Cardinal Laboratories.

Celey D. Keene, Lab Director/Quality Manager



PHONE (575) 393-2326 ° 101 E. MARLAND ° HOBBS, NM 88240

Analytical Results For:

CARMONA RESOURCES
 CONNER MOEHRING
 310 W WALL ST, SUITE 500
 MIDLAND TX, 79701
 Fax To:

Received: 05/28/2024
 Reported: 05/29/2024
 Project Name: COPPERHEAD 31 FED 1H
 Project Number: 2356
 Project Location: EDDY COUNTY, NEW MEXICO

Sampling Date: 05/23/2024
 Sampling Type: Soil
 Sampling Condition: Cool & Intact
 Sample Received By: Alyssa Parras

Sample ID: SW - 5 (1.5') (H242947-13)

BTEx 8021B		mg/kg		Analyzed By: MS						
Analyte	Result	Reporting Limit	Analyzed	Method Blank	BS	% Recovery	True Value QC	RPD	Qualifier	
Benzene*	<0.050	0.050	05/28/2024	ND	1.97	98.4	2.00	1.22		
Toluene*	<0.050	0.050	05/28/2024	ND	1.91	95.6	2.00	1.40		
Ethylbenzene*	<0.050	0.050	05/28/2024	ND	1.92	96.1	2.00	2.12		
Total Xylenes*	<0.150	0.150	05/28/2024	ND	5.54	92.4	6.00	2.14		
Total BTEX	<0.300	0.300	05/28/2024	ND						

Surrogate: 4-Bromofluorobenzene (PID) 91.3 % 71.5-134

Chloride, SM4500Cl-B		mg/kg		Analyzed By: HM					
Analyte	Result	Reporting Limit	Analyzed	Method Blank	BS	% Recovery	True Value QC	RPD	Qualifier
Chloride	16.0	16.0	05/29/2024	ND	416	104	400	3.77	

TPH 8015M		mg/kg		Analyzed By: MS					
Analyte	Result	Reporting Limit	Analyzed	Method Blank	BS	% Recovery	True Value QC	RPD	Qualifier
GRO C6-C10*	<10.0	10.0	05/28/2024	ND	210	105	200	1.75	
DRO >C10-C28*	<10.0	10.0	05/28/2024	ND	201	101	200	0.0691	
EXT DRO >C28-C36	<10.0	10.0	05/28/2024	ND					

Surrogate: 1-Chlorooctane 98.7 % 48.2-134

Surrogate: 1-Chlorooctadecane 105 % 49.1-148

Cardinal Laboratories

*=Accredited Analyte

PLEASE NOTE: Liability and Damages. Cardinal's liability and client's exclusive remedy for any claim arising, whether based in contract or tort, shall be limited to the amount paid by client for analyses. All claims, including those for negligence and any other cause whatsoever shall be deemed waived unless made in writing and received by Cardinal within thirty (30) days after completion of the applicable service. In no event shall Cardinal be liable for incidental or consequential damages, including, without limitation, business interruptions, loss of use, or loss of profits incurred by client, its subsidiaries, affiliates or successors arising out of or related to the performance of the services hereunder by Cardinal, regardless of whether such claim is based upon any of the above stated reasons or otherwise. Results relate only to the samples identified above. This report shall not be reproduced except in full with written approval of Cardinal Laboratories.

Celey D. Keene, Lab Director/Quality Manager



PHONE (575) 393-2326 ° 101 E. MARLAND ° HOBBS, NM 88240

Analytical Results For:

CARMONA RESOURCES
 CONNER MOEHRING
 310 W WALL ST, SUITE 500
 MIDLAND TX, 79701
 Fax To:

Received: 05/28/2024
 Reported: 05/29/2024
 Project Name: COPPERHEAD 31 FED 1H
 Project Number: 2356
 Project Location: EDDY COUNTY, NEW MEXICO

Sampling Date: 05/23/2024
 Sampling Type: Soil
 Sampling Condition: Cool & Intact
 Sample Received By: Alyssa Parras

Sample ID: SW - 6 (1.5') (H242947-14)

BTX 8021B		mg/kg		Analyzed By: MS					
Analyte	Result	Reporting Limit	Analyzed	Method Blank	BS	% Recovery	True Value QC	RPD	Qualifier
Benzene*	<0.050	0.050	05/29/2024	ND	1.97	98.4	2.00	1.22	
Toluene*	<0.050	0.050	05/29/2024	ND	1.91	95.6	2.00	1.40	
Ethylbenzene*	<0.050	0.050	05/29/2024	ND	1.92	96.1	2.00	2.12	
Total Xylenes*	<0.150	0.150	05/29/2024	ND	5.54	92.4	6.00	2.14	
Total BTX	<0.300	0.300	05/29/2024	ND					

Surrogate: 4-Bromofluorobenzene (PID) 91.1 % 71.5-134

Chloride, SM4500Cl-B		mg/kg		Analyzed By: HM					
Analyte	Result	Reporting Limit	Analyzed	Method Blank	BS	% Recovery	True Value QC	RPD	Qualifier
Chloride	48.0	16.0	05/29/2024	ND	416	104	400	3.77	

TPH 8015M		mg/kg		Analyzed By: MS					
Analyte	Result	Reporting Limit	Analyzed	Method Blank	BS	% Recovery	True Value QC	RPD	Qualifier
GRO C6-C10*	<10.0	10.0	05/28/2024	ND	210	105	200	1.75	
DRO >C10-C28*	<10.0	10.0	05/28/2024	ND	201	101	200	0.0691	
EXT DRO >C28-C36	<10.0	10.0	05/28/2024	ND					

Surrogate: 1-Chlorooctane 89.5 % 48.2-134

Surrogate: 1-Chlorooctadecane 94.8 % 49.1-148

Cardinal Laboratories

*=Accredited Analyte

PLEASE NOTE: Liability and Damages. Cardinal's liability and client's exclusive remedy for any claim arising, whether based in contract or tort, shall be limited to the amount paid by client for analyses. All claims, including those for negligence and any other cause whatsoever shall be deemed waived unless made in writing and received by Cardinal within thirty (30) days after completion of the applicable service. In no event shall Cardinal be liable for incidental or consequential damages, including, without limitation, business interruptions, loss of use, or loss of profits incurred by client, its subsidiaries, affiliates or successors arising out of or related to the performance of the services hereunder by Cardinal, regardless of whether such claim is based upon any of the above stated reasons or otherwise. Results relate only to the samples identified above. This report shall not be reproduced except in full with written approval of Cardinal Laboratories.

Celey D. Keene, Lab Director/Quality Manager



PHONE (575) 393-2326 ° 101 E. MARLAND ° HOBBS, NM 88240

Analytical Results For:

CARMONA RESOURCES
 CONNER MOEHRING
 310 W WALL ST, SUITE 500
 MIDLAND TX, 79701
 Fax To:

Received: 05/28/2024
 Reported: 05/29/2024
 Project Name: COPPERHEAD 31 FED 1H
 Project Number: 2356
 Project Location: EDDY COUNTY, NEW MEXICO

Sampling Date: 05/23/2024
 Sampling Type: Soil
 Sampling Condition: Cool & Intact
 Sample Received By: Alyssa Parras

Sample ID: SW - 7 (0.5') (H242947-15)

BTX 8021B		mg/kg		Analyzed By: MS					
Analyte	Result	Reporting Limit	Analyzed	Method Blank	BS	% Recovery	True Value QC	RPD	Qualifier
Benzene*	<0.050	0.050	05/29/2024	ND	1.97	98.4	2.00	1.22	
Toluene*	<0.050	0.050	05/29/2024	ND	1.91	95.6	2.00	1.40	
Ethylbenzene*	<0.050	0.050	05/29/2024	ND	1.92	96.1	2.00	2.12	
Total Xylenes*	<0.150	0.150	05/29/2024	ND	5.54	92.4	6.00	2.14	
Total BTX	<0.300	0.300	05/29/2024	ND					

Surrogate: 4-Bromofluorobenzene (PID) 91.5 % 71.5-134

Chloride, SM4500Cl-B		mg/kg		Analyzed By: HM					
Analyte	Result	Reporting Limit	Analyzed	Method Blank	BS	% Recovery	True Value QC	RPD	Qualifier
Chloride	32.0	16.0	05/29/2024	ND	416	104	400	3.77	

TPH 8015M		mg/kg		Analyzed By: MS					
Analyte	Result	Reporting Limit	Analyzed	Method Blank	BS	% Recovery	True Value QC	RPD	Qualifier
GRO C6-C10*	<10.0	10.0	05/28/2024	ND	210	105	200	1.75	
DRO >C10-C28*	<10.0	10.0	05/28/2024	ND	201	101	200	0.0691	
EXT DRO >C28-C36	<10.0	10.0	05/28/2024	ND					

Surrogate: 1-Chlorooctane 90.9 % 48.2-134

Surrogate: 1-Chlorooctadecane 101 % 49.1-148

Cardinal Laboratories

*=Accredited Analyte

PLEASE NOTE: Liability and Damages. Cardinal's liability and client's exclusive remedy for any claim arising, whether based in contract or tort, shall be limited to the amount paid by client for analyses. All claims, including those for negligence and any other cause whatsoever shall be deemed waived unless made in writing and received by Cardinal within thirty (30) days after completion of the applicable service. In no event shall Cardinal be liable for incidental or consequential damages, including, without limitation, business interruptions, loss of use, or loss of profits incurred by client, its subsidiaries, affiliates or successors arising out of or related to the performance of the services hereunder by Cardinal, regardless of whether such claim is based upon any of the above stated reasons or otherwise. Results relate only to the samples identified above. This report shall not be reproduced except in full with written approval of Cardinal Laboratories.

Celey D. Keene, Lab Director/Quality Manager



PHONE (575) 393-2326 ° 101 E. MARLAND ° HOBBS, NM 88240

Analytical Results For:

CARMONA RESOURCES
 CONNER MOEHRING
 310 W WALL ST, SUITE 500
 MIDLAND TX, 79701
 Fax To:

Received: 05/28/2024
 Reported: 05/29/2024
 Project Name: COPPERHEAD 31 FED 1H
 Project Number: 2356
 Project Location: EDDY COUNTY, NEW MEXICO

Sampling Date: 05/23/2024
 Sampling Type: Soil
 Sampling Condition: Cool & Intact
 Sample Received By: Alyssa Parras

Sample ID: SW - 8 (2') (H242947-16)

BTEx 8021B			mg/kg		Analyzed By: MS				
Analyte	Result	Reporting Limit	Analyzed	Method Blank	BS	% Recovery	True Value QC	RPD	Qualifier
Benzene*	<0.050	0.050	05/29/2024	ND	1.97	98.4	2.00	1.22	
Toluene*	<0.050	0.050	05/29/2024	ND	1.91	95.6	2.00	1.40	
Ethylbenzene*	<0.050	0.050	05/29/2024	ND	1.92	96.1	2.00	2.12	
Total Xylenes*	<0.150	0.150	05/29/2024	ND	5.54	92.4	6.00	2.14	
Total BTEX	<0.300	0.300	05/29/2024	ND					

Surrogate: 4-Bromofluorobenzene (PID) 90.7 % 71.5-134

Chloride, SM4500Cl-B		mg/kg		Analyzed By: HM					
Analyte	Result	Reporting Limit	Analyzed	Method Blank	BS	% Recovery	True Value QC	RPD	Qualifier
Chloride	48.0	16.0	05/29/2024	ND	416	104	400	3.77	

TPH 8015M		mg/kg		Analyzed By: MS					
Analyte	Result	Reporting Limit	Analyzed	Method Blank	BS	% Recovery	True Value QC	RPD	Qualifier
GRO C6-C10*	<10.0	10.0	05/29/2024	ND	210	105	200	1.75	
DRO >C10-C28*	<10.0	10.0	05/29/2024	ND	201	101	200	0.0691	
EXT DRO >C28-C36	<10.0	10.0	05/29/2024	ND					

Surrogate: 1-Chlorooctane 96.8 % 48.2-134

Surrogate: 1-Chlorooctadecane 102 % 49.1-148

Cardinal Laboratories

*=Accredited Analyte

PLEASE NOTE: Liability and Damages. Cardinal's liability and client's exclusive remedy for any claim arising, whether based in contract or tort, shall be limited to the amount paid by client for analyses. All claims, including those for negligence and any other cause whatsoever shall be deemed waived unless made in writing and received by Cardinal within thirty (30) days after completion of the applicable service. In no event shall Cardinal be liable for incidental or consequential damages, including, without limitation, business interruptions, loss of use, or loss of profits incurred by client, its subsidiaries, affiliates or successors arising out of or related to the performance of the services hereunder by Cardinal, regardless of whether such claim is based upon any of the above stated reasons or otherwise. Results relate only to the samples identified above. This report shall not be reproduced except in full with written approval of Cardinal Laboratories.

Celey D. Keene, Lab Director/Quality Manager



PHONE (575) 393-2326 ° 101 E. MARLAND ° HOBBS, NM 88240

Analytical Results For:

CARMONA RESOURCES
 CONNER MOEHRING
 310 W WALL ST, SUITE 500
 MIDLAND TX, 79701
 Fax To:

Received: 05/28/2024
 Reported: 05/29/2024
 Project Name: COPPERHEAD 31 FED 1H
 Project Number: 2356
 Project Location: EDDY COUNTY, NEW MEXICO

Sampling Date: 05/23/2024
 Sampling Type: Soil
 Sampling Condition: Cool & Intact
 Sample Received By: Alyssa Parras

Sample ID: SW - 9 (2') (H242947-17)

BTEx 8021B		mg/kg		Analyzed By: MS					
Analyte	Result	Reporting Limit	Analyzed	Method Blank	BS	% Recovery	True Value QC	RPD	Qualifier
Benzene*	<0.050	0.050	05/29/2024	ND	1.97	98.4	2.00	1.22	
Toluene*	<0.050	0.050	05/29/2024	ND	1.91	95.6	2.00	1.40	
Ethylbenzene*	<0.050	0.050	05/29/2024	ND	1.92	96.1	2.00	2.12	
Total Xylenes*	<0.150	0.150	05/29/2024	ND	5.54	92.4	6.00	2.14	
Total BTEX	<0.300	0.300	05/29/2024	ND					

Surrogate: 4-Bromofluorobenzene (PID) 89.7 % 71.5-134

Chloride, SM4500Cl-B		mg/kg		Analyzed By: HM						
Analyte	Result	Reporting Limit	Analyzed	Method Blank	BS	% Recovery	True Value QC	RPD	Qualifier	
Chloride	32.0	16.0	05/29/2024	ND	416	104	400	3.77		

TPH 8015M		mg/kg		Analyzed By: MS					
Analyte	Result	Reporting Limit	Analyzed	Method Blank	BS	% Recovery	True Value QC	RPD	Qualifier
GRO C6-C10*	<10.0	10.0	05/28/2024	ND	222	111	200	1.36	
DRO >C10-C28*	<10.0	10.0	05/28/2024	ND	211	106	200	4.00	
EXT DRO >C28-C36	<10.0	10.0	05/28/2024	ND					

Surrogate: 1-Chlorooctane 92.4 % 48.2-134

Surrogate: 1-Chlorooctadecane 84.3 % 49.1-148

Cardinal Laboratories

*=Accredited Analyte

PLEASE NOTE: Liability and Damages. Cardinal's liability and client's exclusive remedy for any claim arising, whether based in contract or tort, shall be limited to the amount paid by client for analyses. All claims, including those for negligence and any other cause whatsoever shall be deemed waived unless made in writing and received by Cardinal within thirty (30) days after completion of the applicable service. In no event shall Cardinal be liable for incidental or consequential damages, including, without limitation, business interruptions, loss of use, or loss of profits incurred by client, its subsidiaries, affiliates or successors arising out of or related to the performance of the services hereunder by Cardinal, regardless of whether such claim is based upon any of the above stated reasons or otherwise. Results relate only to the samples identified above. This report shall not be reproduced except in full with written approval of Cardinal Laboratories.

Celey D. Keene, Lab Director/Quality Manager



PHONE (575) 393-2326 ° 101 E. MARLAND ° HOBBS, NM 88240

Analytical Results For:

CARMONA RESOURCES
 CONNER MOEHRING
 310 W WALL ST, SUITE 500
 MIDLAND TX, 79701
 Fax To:

Received: 05/28/2024
 Reported: 05/29/2024
 Project Name: COPPERHEAD 31 FED 1H
 Project Number: 2356
 Project Location: EDDY COUNTY, NEW MEXICO

Sampling Date: 05/23/2024
 Sampling Type: Soil
 Sampling Condition: Cool & Intact
 Sample Received By: Alyssa Parras

Sample ID: SW - 10 (2') (H242947-18)

BTEx 8021B		mg/kg		Analyzed By: MS						
Analyte	Result	Reporting Limit	Analyzed	Method Blank	BS	% Recovery	True Value QC	RPD	Qualifier	
Benzene*	<0.050	0.050	05/29/2024	ND	1.97	98.4	2.00	1.22		
Toluene*	<0.050	0.050	05/29/2024	ND	1.91	95.6	2.00	1.40		
Ethylbenzene*	<0.050	0.050	05/29/2024	ND	1.92	96.1	2.00	2.12		
Total Xylenes*	<0.150	0.150	05/29/2024	ND	5.54	92.4	6.00	2.14		
Total BTEX	<0.300	0.300	05/29/2024	ND						

Surrogate: 4-Bromofluorobenzene (PID) 90.0 % 71.5-134

Chloride, SM4500Cl-B		mg/kg		Analyzed By: HM						
Analyte	Result	Reporting Limit	Analyzed	Method Blank	BS	% Recovery	True Value QC	RPD	Qualifier	
Chloride	32.0	16.0	05/29/2024	ND	416	104	400	3.77		

TPH 8015M		mg/kg		Analyzed By: MS					
Analyte	Result	Reporting Limit	Analyzed	Method Blank	BS	% Recovery	True Value QC	RPD	Qualifier
GRO C6-C10*	<10.0	10.0	05/28/2024	ND	222	111	200	1.36	
DRO >C10-C28*	<10.0	10.0	05/28/2024	ND	211	106	200	4.00	
EXT DRO >C28-C36	<10.0	10.0	05/28/2024	ND					

Surrogate: 1-Chlorooctane 83.9 % 48.2-134

Surrogate: 1-Chlorooctadecane 77.5 % 49.1-148

Cardinal Laboratories

*=Accredited Analyte

PLEASE NOTE: Liability and Damages. Cardinal's liability and client's exclusive remedy for any claim arising, whether based in contract or tort, shall be limited to the amount paid by client for analyses. All claims, including those for negligence and any other cause whatsoever shall be deemed waived unless made in writing and received by Cardinal within thirty (30) days after completion of the applicable service. In no event shall Cardinal be liable for incidental or consequential damages, including, without limitation, business interruptions, loss of use, or loss of profits incurred by client, its subsidiaries, affiliates or successors arising out of or related to the performance of the services hereunder by Cardinal, regardless of whether such claim is based upon any of the above stated reasons or otherwise. Results relate only to the samples identified above. This report shall not be reproduced except in full with written approval of Cardinal Laboratories.

Celey D. Keene, Lab Director/Quality Manager



PHONE (575) 393-2326 ° 101 E. MARLAND ° HOBBS, NM 88240

Notes and Definitions

ND	Analyte NOT DETECTED at or above the reporting limit
RPD	Relative Percent Difference
**	Samples not received at proper temperature of 6°C or below.
***	Insufficient time to reach temperature.
-	Chloride by SM4500Cl-B does not require samples be received at or below 6°C Samples reported on an as received basis (wet) unless otherwise noted on report

Cardinal Laboratories

*=Accredited Analyte

PLEASE NOTE: Liability and Damages. Cardinal's liability and client's exclusive remedy for any claim arising, whether based in contract or tort, shall be limited to the amount paid by client for analyses. All claims, including those for negligence and any other cause whatsoever shall be deemed waived unless made in writing and received by Cardinal within thirty (30) days after completion of the applicable service. In no event shall Cardinal be liable for incidental or consequential damages, including, without limitation, business interruptions, loss of use, or loss of profits incurred by client, its subsidiaries, affiliates or successors arising out of or related to the performance of the services hereunder by Cardinal, regardless of whether such claim is based upon any of the above stated reasons or otherwise. Results relate only to the samples identified above. This report shall not be reproduced except in full with written approval of Cardinal Laboratories.

A handwritten signature in black ink, appearing to read "Celey D. Keene".

Celey D. Keene, Lab Director/Quality Manager

Chain of Custody

Work Order No: 247947

Page 1 of 2

Project Manager:	Conner Moehring	Bill to: (if different)	Carmona Resources
Company Name:	Carmona Resources	Company Name:	
Address:	310 W Wall St Ste 500	Address:	
City, State ZIP:	Midland, TX 79701	City, State ZIP:	
Phone:	432-813-6823	Email:	mcarmona@carmonaresources.com

Program: UST/PST	<input type="checkbox"/> PRP	<input type="checkbox"/> Brownfields	<input type="checkbox"/> RC	<input type="checkbox"/> Superfund
State of Project:				
Reporting Level II	<input type="checkbox"/>	Level III	<input type="checkbox"/>	ST/UST
Deliverables: EDD	<input type="checkbox"/>	ADAPT	<input type="checkbox"/>	Other:

Project Name:	Copperhead 31 Fed 1H	Turn Around	<input type="checkbox"/> Routine	<input checked="" type="checkbox"/> Rush	Pres. Code	
Project Number:	2356	Due Date:	24 Hr			
Project Location:	Eddy County, New Mexico					
Sampler's Name:	JM					
PO #:		Temp Blank:	Yes	No	Wet Ice:	Yes
SAMPLE RECEIPT		Thermometer ID:	140			
Received Intact:	Yes	Correction Factor:	3.3			
Cooler Custody Seals:	Yes	Temperature Reading:				
Sample Custody Seals:	Yes	Corrected Temperature:				
Total Containers:						

Sample Identification	Date	Time	Soil	Water	Grab/Comp	# of Cont	Parameters	ANALYSIS REQUEST	Preservative Codes
CS-1 (3)	5/23/2024		X		C	1	X	X	X
CS-2 (3)	5/23/2024		X		C	1	X	X	X
CS-3 (1.5)	5/23/2024		X		C	1	X	X	X
CS-4 (1.5)	5/23/2024		X		C	1	X	X	X
CS-5 (1.5)	5/23/2024		X		C	1	X	X	X
CS-6 (1.5)	5/23/2024		X		C	1	X	X	X
CS-7 (2)	5/23/2024		X		C	1	X	X	X
CS-8 (2)	5/23/2024		X		C	1	X	X	X
SW-1 (3)	5/23/2024		X		C	1	X	X	X
SW-2 (3)	5/23/2024		X		C	1	X	X	X

Comments: Email to Mike Carmona / mcarmona@carmonaresources.com and Conner Moehring / cmoehring@carmonaresources.com

Relinquished by: (Signature)

Date/Time

Received by: (Signature)

Date/Time

5/28/24 1422

Chain of Custody

Work Order No: 242947

Page 2 of 2

Project Manager: Conner Moehring						Bill To: (if different) Carmona Resources					
Company Name: Carmona Resources						Company Name:					
Address: 310 W Wall St Ste 500						Address:					
City, State ZIP: Midland, TX 79701						City, State ZIP:					
Phone: 432-813-6823						Email: mcarmona@carmonarresources.com					
Project Name: Copperhead 31 Fed 1H						Turn Around					
Project Number: 2356						<input type="checkbox"/> Routine <input checked="" type="checkbox"/> Rush					
Project Location: Eddy County, New Mexico						Due Date: 24 Hr					
Sample's Name: JM											
PO #:											
SAMPLE RECEIPT											
Received Inact: Yes No						Temp Blank: Yes No					
Cooler Custody Seals: Yes No N/A						Thermometer ID: 140					
Sample Custody Seals: Yes No N/A						Correction Factor: 3.3					
Total Containers:						Temperature Reading: Corrected Temperature:					
Sample Identification						Parameters					
Date						Time					
Soil						Water					
Grab/Comp						# of Cont					
SW-3 (3)						X X X					
SW-4 (1.5')						X X X					
SW-5 (1.5')						X X X					
SW-6 (1.5')						X X X					
SW-7 (0.5')						X X X					
SW-8 (2')						X X X					
SW-9 (2')						X X X					
SW-10 (2')						X X X					
Comments: Email to Mike Carmona / mcarmona@carmonarresources.com and Conner Moehring / cmoehring@carmonarresources.com											
Relinquished by: (Signature)						Date/Time					
Received by: (Signature)						Date/Time					



PHONE (575) 393-2326 ° 101 E. MARLAND ° HOBBS, NM 88240

May 29, 2024

CONNER MOEHRING

CARMONA RESOURCES

310 W WALL ST, SUITE 500

MIDLAND, TX 79701

RE: COPPERHEAD 31 FED 1H

Enclosed are the results of analyses for samples received by the laboratory on 05/28/24 14:22.

Cardinal Laboratories is accredited through Texas NELAP under certificate number T104704398-23-16. Accreditation applies to drinking water, non-potable water and solid and chemical materials. All accredited analytes are denoted by an asterisk (*). For a complete list of accredited analytes and matrices visit the TCEQ website at www.tceq.texas.gov/field/qa/lab_accred_certif.html.

Cardinal Laboratories is accredited through the State of Colorado Department of Public Health and Environment for:

Method EPA 552.2	Haloacetic Acids (HAA-5)
Method EPA 524.2	Total Trihalomethanes (TTHM)
Method EPA 524.4	Regulated VOCs (V1, V2, V3)

Accreditation applies to public drinking water matrices.

This report meets NELAP requirements and is made up of a cover page, analytical results, and a copy of the original chain-of-custody. If you have any questions concerning this report, please feel free to contact me.

Sincerely,

A handwritten signature in black ink that reads "Celey D. Keene". The signature is written in a cursive, flowing style.

Celey D. Keene

Lab Director/Quality Manager



PHONE (575) 393-2326 ° 101 E. MARLAND ° HOBBS, NM 88240

Analytical Results For:

CARMONA RESOURCES
 CONNER MOEHRING
 310 W WALL ST, SUITE 500
 MIDLAND TX, 79701
 Fax To:

Received: 05/28/2024
 Reported: 05/29/2024
 Project Name: COPPERHEAD 31 FED 1H
 Project Number: 2356
 Project Location: EDDY COUNTY, NEW MEXICO

Sampling Date: 05/24/2024
 Sampling Type: Soil
 Sampling Condition: Cool & Intact
 Sample Received By: Alyssa Parras

Sample ID: RED BLUFF PIT (H242948-01)

BTX 8021B		mg/kg		Analyzed By: MS					
Analyte	Result	Reporting Limit	Analyzed	Method Blank	BS	% Recovery	True Value QC	RPD	Qualifier
Benzene*	<0.050	0.050	05/29/2024	ND	1.97	98.4	2.00	1.22	
Toluene*	<0.050	0.050	05/29/2024	ND	1.91	95.6	2.00	1.40	
Ethylbenzene*	<0.050	0.050	05/29/2024	ND	1.92	96.1	2.00	2.12	
Total Xylenes*	<0.150	0.150	05/29/2024	ND	5.54	92.4	6.00	2.14	
Total BTX	<0.300	0.300	05/29/2024	ND					

Surrogate: 4-Bromofluorobenzene (PID) 91.2 % 71.5-134

Chloride, SM4500Cl-B		mg/kg		Analyzed By: HM					
Analyte	Result	Reporting Limit	Analyzed	Method Blank	BS	% Recovery	True Value QC	RPD	Qualifier
Chloride	48.0	16.0	05/29/2024	ND	416	104	400	3.77	

TPH 8015M	mg/kg		Analyzed By: MS						
Analyte	Result	Reporting Limit	Analyzed	Method Blank	BS	% Recovery	True Value QC	RPD	Qualifier
GRO C6-C10*	<10.0	10.0	05/28/2024	ND	222	111	200	1.36	
DRO >C10-C28*	<10.0	10.0	05/28/2024	ND	211	106	200	4.00	
EXT DRO >C28-C36	<10.0	10.0	05/28/2024	ND					

Surrogate: 1-Chlorooctane 80.2 % 48.2-134

Surrogate: 1-Chlorooctadecane 73.8 % 49.1-148

Cardinal Laboratories

*=Accredited Analyte

PLEASE NOTE: Liability and Damages. Cardinal's liability and client's exclusive remedy for any claim arising, whether based in contract or tort, shall be limited to the amount paid by client for analyses. All claims, including those for negligence and any other cause whatsoever shall be deemed waived unless made in writing and received by Cardinal within thirty (30) days after completion of the applicable service. In no event shall Cardinal be liable for incidental or consequential damages, including, without limitation, business interruptions, loss of use, or loss of profits incurred by client, its subsidiaries, affiliates or successors arising out of or related to the performance of the services hereunder by Cardinal, regardless of whether such claim is based upon any of the above stated reasons or otherwise. Results relate only to the samples identified above. This report shall not be reproduced except in full with written approval of Cardinal Laboratories.

Celey D. Keene, Lab Director/Quality Manager

PHONE (575) 393-2326 ° 101 E. MARLAND ° HOBBS, NM 88240

Notes and Definitions

ND	Analyte NOT DETECTED at or above the reporting limit
RPD	Relative Percent Difference
**	Samples not received at proper temperature of 6°C or below.
***	Insufficient time to reach temperature.
-	Chloride by SM4500Cl-B does not require samples be received at or below 6°C Samples reported on an as received basis (wet) unless otherwise noted on report

Cardinal Laboratories

*=Accredited Analyte

PLEASE NOTE: Liability and Damages. Cardinal's liability and client's exclusive remedy for any claim arising, whether based in contract or tort, shall be limited to the amount paid by client for analyses. All claims, including those for negligence and any other cause whatsoever shall be deemed waived unless made in writing and received by Cardinal within thirty (30) days after completion of the applicable service. In no event shall Cardinal be liable for incidental or consequential damages, including, without limitation, business interruptions, loss of use, or loss of profits incurred by client, its subsidiaries, affiliates or successors arising out of or related to the performance of the services hereunder by Cardinal, regardless of whether such claim is based upon any of the above stated reasons or otherwise. Results relate only to the samples identified above. This report shall not be reproduced except in full with written approval of Cardinal Laboratories.

A handwritten signature in black ink, appearing to read "Celey D. Keene".

Celey D. Keene, Lab Director/Quality Manager

Work Order No: 242948-

Page 4 of 4

Page 1 of 1

Work Order Comments

Program: UST/PST ☐ RP ☐ brownfields ☒ RC ☐ superfund ☐

State of Project:

Reporting Level II ☐ Level III ☐ ST/UST ☐ RP ☐ level IV ☐

Deliverables: EDD ☐ ADAPT ☐ Other.

[illegible]

Sante Fe Main Office
Phone: (505) 476-3441

General Information
Phone: (505) 629-6116

Online Phone Directory
<https://www.emnrd.nm.gov/ocd/contact-us>

State of New Mexico
Energy, Minerals and Natural Resources
Oil Conservation Division
1220 S. St Francis Dr.
Santa Fe, NM 87505

QUESTIONS

Action 488120

QUESTIONS

Operator: COG OPERATING LLC 600 W Illinois Ave Midland, TX 79701	OGRID: 229137
	Action Number: 488120
	Action Type: [C-141] Remediation Closure Request C-141 (C-141-v-Closure)

QUESTIONS

Prerequisites	
Incident ID (n#)	nAPP2410932444
Incident Name	NAPP2410932444 COPPERHEAD 31 FED COM 1H @ 0
Incident Type	Oil Release
Incident Status	Remediation Closure Report Received

Location of Release Source	
Please answer all the questions in this group.	
Site Name	Copperhead 31 Fed Com 1H
Date Release Discovered	04/16/2024
Surface Owner	Federal

Incident Details	
Please answer all the questions in this group.	
Incident Type	Oil Release
Did this release result in a fire or is the result of a fire	No
Did this release result in any injuries	No
Has this release reached or does it have a reasonable probability of reaching a watercourse	No
Has this release endangered or does it have a reasonable probability of endangering public health	No
Has this release substantially damaged or will it substantially damage property or the environment	No
Is this release of a volume that is or may with reasonable probability be detrimental to fresh water	No

Nature and Volume of Release	
Material(s) released, please answer all that apply below. Any calculations or specific justifications for the volumes provided should be attached to the follow-up C-141 submission.	
Crude Oil Released (bbls) Details	Cause: Overflow - Tank, Pit, Etc. Tank (Any) Crude Oil Released: 132 BBL (Unknown Released Amount) Recovered: 130 BBL Lost: 2 BBL.
Produced Water Released (bbls) Details	Not answered.
Is the concentration of chloride in the produced water >10,000 mg/l	No
Condensate Released (bbls) Details	Not answered.
Natural Gas Vented (Mcf) Details	Not answered.
Natural Gas Flared (Mcf) Details	Not answered.
Other Released Details	Not answered.
Are there additional details for the questions above (i.e. any answer containing Other, Specify, Unknown, and/or Fire, or any negative lost amounts)	Not answered.

Sante Fe Main Office
Phone: (505) 476-3441

General Information
Phone: (505) 629-6116

Online Phone Directory
<https://www.emnrd.nm.gov/ocd/contact-us>

State of New Mexico
Energy, Minerals and Natural Resources
Oil Conservation Division
1220 S. St Francis Dr.
Santa Fe, NM 87505

QUESTIONS, Page 2

Action 488120

QUESTIONS (continued)

Operator: COG OPERATING LLC 600 W Illinois Ave Midland, TX 79701	OGRID: 229137
	Action Number: 488120
	Action Type: [C-141] Remediation Closure Request C-141 (C-141-v-Closure)

QUESTIONS

Nature and Volume of Release (continued)	
Is this a gas only submission (i.e. only significant Mcf values reported)	No, according to supplied volumes this does not appear to be a "gas only" report.
Was this a major release as defined by Subsection A of 19.15.29.7 NMAC	Yes
Reasons why this would be considered a submission for a notification of a major release	From paragraph A. "Major release" determine using: (1) an unauthorized release of a volume, excluding gases, of 25 barrels or more.
With the implementation of the 19.15.27 NMAC (05/25/2021), venting and/or flaring of natural gas (i.e. gas only) are to be submitted on the C-129 form.	

Initial Response

The responsible party must undertake the following actions immediately unless they could create a safety hazard that would result in injury.

The source of the release has been stopped	True
The impacted area has been secured to protect human health and the environment	True
Released materials have been contained via the use of berms or dikes, absorbent pads, or other containment devices	True
All free liquids and recoverable materials have been removed and managed appropriately	True
If all the actions described above have not been undertaken, explain why	Not answered.

Per Paragraph (4) of Subsection B of 19.15.29.8 NMAC the responsible party may commence remediation immediately after discovery of a release. If remediation has begun, please prepare and attach a narrative of actions to date in the follow-up C-141 submission. If remedial efforts have been successfully completed or if the release occurred within a lined containment area (see Subparagraph (a) of Paragraph (5) of Subsection A of 19.15.29.11 NMAC), please prepare and attach all information needed for closure evaluation in the follow-up C-141 submission.

I hereby certify that the information given above is true and complete to the best of my knowledge and understand that pursuant to OCD rules and regulations all operators are required to report and/or file certain release notifications and perform corrective actions for releases which may endanger public health or the environment. The acceptance of a C-141 report by the OCD does not relieve the operator of liability should their operations have failed to adequately investigate and remediate contamination that pose a threat to groundwater, surface water, human health or the environment. In addition, OCD acceptance of a C-141 report does not relieve the operator of responsibility for compliance with any other federal, state, or local laws and/or regulations.

I hereby agree and sign off to the above statement	Name: Brittany Esparza Title: Environmental Technician Email: brittany.Esparza@ConocoPhillips.com Date: 05/07/2024
--	---

Sante Fe Main Office
Phone: (505) 476-3441

General Information
Phone: (505) 629-6116

Online Phone Directory
<https://www.emnrd.nm.gov/ocd/contact-us>

State of New Mexico
Energy, Minerals and Natural Resources
Oil Conservation Division
1220 S. St Francis Dr.
Santa Fe, NM 87505

QUESTIONS, Page 3

Action 488120

QUESTIONS (continued)

Operator: COG OPERATING LLC 600 W Illinois Ave Midland, TX 79701	OGRID: 229137
	Action Number: 488120
	Action Type: [C-141] Remediation Closure Request C-141 (C-141-v-Closure)

QUESTIONS

Site Characterization	
<i>Please answer all the questions in this group (only required when seeking remediation plan approval and beyond). This information must be provided to the appropriate district office no later than 90 days after the release discovery date.</i>	
What is the shallowest depth to groundwater beneath the area affected by the release in feet below ground surface (ft bgs)	Between 51 and 75 (ft.)
What method was used to determine the depth to ground water	NM OSE iWaters Database Search
Did this release impact groundwater or surface water	No
What is the minimum distance, between the closest lateral extents of the release and the following surface areas:	
A continuously flowing watercourse or any other significant watercourse	Between 1 and 5 (mi.)
Any lakebed, sinkhole, or playa lake (measured from the ordinary high-water mark)	Between 1 and 5 (mi.)
An occupied permanent residence, school, hospital, institution, or church	Greater than 5 (mi.)
A spring or a private domestic fresh water well used by less than five households for domestic or stock watering purposes	Greater than 5 (mi.)
Any other fresh water well or spring	Greater than 5 (mi.)
Incorporated municipal boundaries or a defined municipal fresh water well field	Greater than 5 (mi.)
A wetland	Greater than 5 (mi.)
A subsurface mine	Greater than 5 (mi.)
An (non-karst) unstable area	Between 1 and 5 (mi.)
Categorize the risk of this well / site being in a karst geology	Medium
A 100-year floodplain	Greater than 5 (mi.)
Did the release impact areas not on an exploration, development, production, or storage site	No

Remediation Plan	
<i>Please answer all the questions that apply or are indicated. This information must be provided to the appropriate district office no later than 90 days after the release discovery date.</i>	
Requesting a remediation plan approval with this submission	Yes
<i>Attach a comprehensive report demonstrating the lateral and vertical extents of soil contamination associated with the release have been determined, pursuant to 19.15.29.11 NMAC and 19.15.29.13 NMAC.</i>	
Have the lateral and vertical extents of contamination been fully delineated	Yes
Was this release entirely contained within a lined containment area	No
Soil Contamination Sampling: (Provide the highest observable value for each, in milligrams per kilograms.)	
Chloride (EPA 300.0 or SM4500 Cl B)	1040
TPH (GRO+DRO+MRO) (EPA SW-846 Method 8015M)	3560
GRO+DRO (EPA SW-846 Method 8015M)	2500
BTEX (EPA SW-846 Method 8021B or 8260B)	0.1
Benzene (EPA SW-846 Method 8021B or 8260B)	0.1
<i>Per Subsection B of 19.15.29.11 NMAC unless the site characterization report includes completed efforts at remediation, the report must include a proposed remediation plan in accordance with 19.15.29.12 NMAC, which includes the anticipated timelines for beginning and completing the remediation.</i>	
On what estimated date will the remediation commence	05/22/2024
On what date will (or did) the final sampling or liner inspection occur	05/23/2024
On what date will (or was) the remediation complete(d)	05/28/2024
What is the estimated surface area (in square feet) that will be reclaimed	1658
What is the estimated volume (in cubic yards) that will be reclaimed	130
What is the estimated surface area (in square feet) that will be remediated	1658
What is the estimated volume (in cubic yards) that will be remediated	130
<i>These estimated dates and measurements are recognized to be the best guess or calculation at the time of submission and may (be) change(d) over time as more remediation efforts are completed.</i>	
<i>The OCD recognizes that proposed remediation measures may have to be minimally adjusted in accordance with the physical realities encountered during remediation. If the responsible party has any need to significantly deviate from the remediation plan proposed, then it should consult with the division to determine if another remediation plan submission is required.</i>	

Sante Fe Main Office
Phone: (505) 476-3441

General Information
Phone: (505) 629-6116

Online Phone Directory
<https://www.emnrd.nm.gov/ocd/contact-us>

State of New Mexico
Energy, Minerals and Natural Resources
Oil Conservation Division
1220 S. St Francis Dr.
Santa Fe, NM 87505

QUESTIONS, Page 4

Action 488120

QUESTIONS (continued)

Operator: COG OPERATING LLC 600 W Illinois Ave Midland, TX 79701	OGRID: 229137
	Action Number: 488120
	Action Type: [C-141] Remediation Closure Request C-141 (C-141-v-Closure)

QUESTIONS

Remediation Plan (continued)	
<i>Please answer all the questions that apply or are indicated. This information must be provided to the appropriate district office no later than 90 days after the release discovery date.</i>	
This remediation will (or is expected to) utilize the following processes to remediate / reduce contaminants:	
<i>(Select all answers below that apply.)</i>	
(Ex Situ) Excavation and off-site disposal (i.e. dig and haul, hydrovac, etc.)	Yes
Which OCD approved facility will be used for off-site disposal	AGAVE RED BLUFF #2 CS [fcs00000000012]
OR which OCD approved well (API) will be used for off-site disposal	Not answered.
OR is the off-site disposal site, to be used, out-of-state	Not answered.
OR is the off-site disposal site, to be used, an NMED facility	Not answered.
(Ex Situ) Excavation and on-site remediation (i.e. On-Site Land Farms)	Not answered.
(In Situ) Soil Vapor Extraction	Not answered.
(In Situ) Chemical processing (i.e. Soil Shredding, Potassium Permanganate, etc.)	Not answered.
(In Situ) Biological processing (i.e. Microbes / Fertilizer, etc.)	Not answered.
(In Situ) Physical processing (i.e. Soil Washing, Gypsum, Disking, etc.)	Not answered.
Ground Water Abatement pursuant to 19.15.30 NMAC	Not answered.
OTHER (Non-listed remedial process)	Not answered.
<i>Per Subsection B of 19.15.29.11 NMAC unless the site characterization report includes completed efforts at remediation, the report must include a proposed remediation plan in accordance with 19.15.29.12 NMAC, which includes the anticipated timelines for beginning and completing the remediation.</i>	
I hereby certify that the information given above is true and complete to the best of my knowledge and understand that pursuant to OCD rules and regulations all operators are required to report and/or file certain release notifications and perform corrective actions for releases which may endanger public health or the environment. The acceptance of a C-141 report by the OCD does not relieve the operator of liability should their operations have failed to adequately investigate and remediate contamination that pose a threat to groundwater, surface water, human health or the environment. In addition, OCD acceptance of a C-141 report does not relieve the operator of responsibility for compliance with any other federal, state, or local laws and/or regulations.	
I hereby agree and sign off to the above statement	Name: Brittany Esparza Title: Environmental Technician Email: brittany.Esparza@ConocoPhillips.com Date: 07/23/2025
<i>The OCD recognizes that proposed remediation measures may have to be minimally adjusted in accordance with the physical realities encountered during remediation. If the responsible party has any need to significantly deviate from the remediation plan proposed, then it should consult with the division to determine if another remediation plan submission is required.</i>	

Sante Fe Main Office
Phone: (505) 476-3441

General Information
Phone: (505) 629-6116

Online Phone Directory
<https://www.emnrd.nm.gov/ocd/contact-us>

State of New Mexico
Energy, Minerals and Natural Resources
Oil Conservation Division
1220 S. St Francis Dr.
Santa Fe, NM 87505

QUESTIONS, Page 5

Action 488120

QUESTIONS (continued)

Operator: COG OPERATING LLC 600 W Illinois Ave Midland, TX 79701	OGRID: 229137
	Action Number: 488120
	Action Type: [C-141] Remediation Closure Request C-141 (C-141-v-Closure)

QUESTIONS

Deferral Requests Only	
Only answer the questions in this group if seeking a deferral upon approval this submission. Each of the following items must be confirmed as part of any request for deferral of remediation.	
Requesting a deferral of the remediation closure due date with the approval of this submission	No

Sante Fe Main Office
Phone: (505) 476-3441

General Information
Phone: (505) 629-6116

Online Phone Directory
<https://www.emnrd.nm.gov/ocd/contact-us>

State of New Mexico
Energy, Minerals and Natural Resources
Oil Conservation Division
1220 S. St Francis Dr.
Santa Fe, NM 87505

QUESTIONS, Page 6

Action 488120

QUESTIONS (continued)

Operator: COG OPERATING LLC 600 W Illinois Ave Midland, TX 79701	OGRID: 229137
	Action Number: 488120
	Action Type: [C-141] Remediation Closure Request C-141 (C-141-v-Closure)

QUESTIONS

Sampling Event Information	
Last sampling notification (C-141N) recorded	346448
Sampling date pursuant to Subparagraph (a) of Paragraph (1) of Subsection D of 19.15.29.12 NMAC	05/23/2024
What was the (estimated) number of samples that were to be gathered	22
What was the sampling surface area in square feet	1658

Remediation Closure Request	
<i>Only answer the questions in this group if seeking remediation closure for this release because all remediation steps have been completed.</i>	
Requesting a remediation closure approval with this submission	Yes
Have the lateral and vertical extents of contamination been fully delineated	Yes
Was this release entirely contained within a lined containment area	No
All areas reasonably needed for production or subsequent drilling operations have been stabilized, returned to the sites existing grade, and have a soil cover that prevents ponding of water, minimizing dust and erosion	Yes
What was the total surface area (in square feet) remediated	1685
What was the total volume (cubic yards) remediated	130
All areas not reasonably needed for production or subsequent drilling operations have been reclaimed to contain a minimum of four feet of non-waste contain earthen material with concentrations less than 600 mg/kg chlorides, 100 mg/kg TPH, 50 mg/kg BTEX, and 10 mg/kg Benzene	Yes
What was the total surface area (in square feet) reclaimed	1685
What was the total volume (in cubic yards) reclaimed	130
Summarize any additional remediation activities not included by answers (above)	NA
<i>The responsible party must attach information demonstrating they have complied with all applicable closure requirements and any conditions or directives of the OCD. This demonstration should be in the form of a comprehensive report (in .pdf format) including a scaled site map, sampling diagrams, relevant field notes, photographs of any excavation prior to backfilling, laboratory data including chain of custody documents of final sampling, and a narrative of the remedial activities. Refer to 19.15.29.12 NMAC.</i>	
I hereby certify that the information given above is true and complete to the best of my knowledge and understand that pursuant to OCD rules and regulations all operators are required to report and/or file certain release notifications and perform corrective actions for releases which may endanger public health or the environment. The acceptance of a C-141 report by the OCD does not relieve the operator of liability should their operations have failed to adequately investigate and remediate contamination that pose a threat to groundwater, surface water, human health or the environment. In addition, OCD acceptance of a C-141 report does not relieve the operator of responsibility for compliance with any other federal, state, or local laws and/or regulations. The responsible party acknowledges they must substantially restore, reclaim, and re-vegetate the impacted surface area to the conditions that existed prior to the release or their final land use in accordance with 19.15.29.13 NMAC including notification to the OCD when reclamation and re-vegetation are complete.	
I hereby agree and sign off to the above statement	Name: Brittany Esparza Title: Environmental Technician Email: brittany.Esparza@ConocoPhillips.com Date: 07/23/2025

Sante Fe Main Office
Phone: (505) 476-3441

General Information
Phone: (505) 629-6116

Online Phone Directory
<https://www.emnrd.nm.gov/ocd/contact-us>

State of New Mexico
Energy, Minerals and Natural Resources
Oil Conservation Division
1220 S. St Francis Dr.
Santa Fe, NM 87505

QUESTIONS, Page 7

Action 488120

QUESTIONS (continued)

Operator: COG OPERATING LLC 600 W Illinois Ave Midland, TX 79701	OGRID: 229137
	Action Number: 488120
	Action Type: [C-141] Remediation Closure Request C-141 (C-141-v-Closure)

QUESTIONS

Reclamation Report	
Only answer the questions in this group if all reclamation steps have been completed.	
Requesting a reclamation approval with this submission	No

Sante Fe Main Office
Phone: (505) 476-3441

General Information
Phone: (505) 629-6116

Online Phone Directory
<https://www.emnrd.nm.gov/ocd/contact-us>

State of New Mexico
Energy, Minerals and Natural Resources
Oil Conservation Division
1220 S. St Francis Dr.
Santa Fe, NM 87505

CONDITIONS

Action 488120

CONDITIONS

Operator: COG OPERATING LLC 600 W Illinois Ave Midland, TX 79701	OGRID: 229137
	Action Number: 488120
	Action Type: [C-141] Remediation Closure Request C-141 (C-141-v-Closure)

CONDITIONS

Created By	Condition	Condition Date
rhamlet	We have received your Remediation Closure Report for Incident #NAPP2410932444 COPPERHEAD 31 FED COM 1H, thank you. This Remediation Closure Report is approved.	8/28/2025