



SITE INFORMATION

Closure Report
Lea Unit West Flare (12.03.2025)
Incident ID: nAPP2533752426
Lea County, New Mexico
Unit D, Sec 12, T20S, R34E
32.59241, -103.51972

Crude Oil Release
Point of Release: Flare Fire
Release Date: 12.03.2025
Volume Released: 0.01 Barrels of Crude Oil
Volume Recovered: 0 Barrels of Crude Oil

CARMONA RESOURCES



Prepared for:
Coterra Energy Operating Co.
6001 Deauville Blvd.
Suite 300N
Midland, Texas 79706

Prepared by:
Carmona Resources, LLC
310 West Wall Street
Suite 500
Midland, Texas 79701

310 West Wall Street, Suite 500
Midland TX, 79701
432.813.1992



TABLE OF CONTENTS

1.0 SITE INFORMATION AND BACKGROUND

2.0 SITE CHARACTERIZATION AND GROUNDWATER

3.0 NMAC REGULATORY CRITERIA

4.0 REMEDIATION ACTIVITIES

5.0 CONCLUSIONS & VARIANCE

FIGURES

FIGURE 1 OVERVIEW FIGURE 2 TOPOGRAPHIC

FIGURE 3 EXCAVATION DEPTH

APPENDICES

APPENDIX A TABLES

APPENDIX B PHOTOS

APPENDIX C NMOCD CORRESPONDENCE

APPENDIX D SITE CHARACTERIZATION AND GROUNDWATER

APPENDIX E LABORATORY REPORTS



January 8, 2026

New Mexico Oil Conservation District
1220 South St, France Drive
Santa Fe, NM 87505

Re: **Closure Report**
Lea Unit West Flare (12.03.2025)
Incident ID: NAPP2533752426
Coterra Energy Operating Co.
Site Location: Unit D, S12, T20S, R34E
32.59241, -103.51972
Lea County, New Mexico

To whom it may concern:

At the request of Coterra Energy Operating Co. (Coterra, formerly known as Avant Operating, LLC) Carmona Resources LLC, has prepared this letter to document the site remediation conducted at the Lea Unit West Flare, located at 32.59241, -103.51972 within Unit D, S12, T20S, R34E, in Lea County, New Mexico (Figures 1 and 2).

1.0 Site Information and Background

Based on the initial C-141 obtained from the New Mexico Oil Conservation Division (NMOCD), the release was discovered on December 3, 2025, due to a valve on the compressor line being closed, allowing fluids from the separator to carry over to the flare, resulting in a fire. The incident resulted in the release of approximately zero point zero one (0.01) barrels of crude oil, with zero (0) barrels recovered. The release area is approximately 568 square feet. The spill boundaries are shown in Figure 3. The initial C-141 form is attached in Appendix C.

2.0 Site Characterization and Groundwater

The site is located within a low karst area. Based on a review of the New Mexico Office of State Engineers and USGS databases, there are no known water sources within a 0.50-mile radius of the location. The nearest groundwater determination bore (GWDB) is located approximately 0.05 miles East of the site in S12, T20S, 34E, and was drilled in 2025. The GWDB was drilled to a depth of 105 feet below ground surface (ft bgs) and did not show evidence of groundwater present after 72 hours. A copy of the summary report is attached in Appendix D.

3.0 NMAC Regulatory Criteria

Per the NMOCD regulatory criteria established in 19.15.29.12 NMAC, the following criteria were utilized in assessing and remediating the site.

- Benzene: 10 milligrams per kilogram (mg/kg).
- Benzene, toluene, ethylbenzene, and total xylenes (BTEX): 50 mg/kg.
- TPH: 1,000 mg/kg (GRO + DRO).
- TPH: 2,500 mg/kg (GRO + DRO + MRO).
- Chloride: 20,000 mg/kg.

4.0 Remediation Activities

On December 12, 2025, Carmona Resources personnel were onsite to supervise the remediation activities, collect confirmation samples, and document backfill activities. Before collecting composite confirmation samples, the NMOCD division office was notified via NMOCD portal on December 5, 2025, per Subsection D of 19.15.29.12 NMAC, see Appendix C. The area was excavated to a depth of 0.25 ft bgs. A total of four (4) horizontal samples (H-1 through H-4) were collected for horizontal delineation, and four (4) confirmation floor samples (CS-1 through CS-4) were collected every 200 square feet to ensure the proper removal of contaminated soil. Composite confirmation sidewall samples were not collected due to the excavation depth not exceeding 0.5' ft bgs. For chemical analysis, the soil samples were collected and placed into laboratory-provided sample containers, stored on ice, and transported under the proper chain-of-custody protocol to Eurofins Laboratories in Midland, Texas in accordance with established chain-of-custody protocols. All collected samples were analyzed for TPH analysis by EPA method 8015 modified, BTEX by EPA method 8021B, and Chloride by EPA method 300. Copies of laboratory analysis and chain-of-custody documentation are included in Appendix E.

All final confirmation samples were below the regulatory requirements for TPH, BTEX, and Chlorides. Refer to Table 1. The excavation depths and confirmation sample locations are shown in Figure 3.

Approximately 568 square feet of impacted area was remediated, resulting in the removal of an estimated 6 cubic yards of soil, which was transported offsite for proper disposal at an approved facility

5.0 Conclusion & Variance

Due to the excavation being less than six (6) inches in depth, horizontal delineation samples were collected in place of composite confirmation sidewall samples. Additionally, due to the shallow nature of the surface scrape, a variance to NMAC 19.15.29.12.D.2 is requested in relation to backfilling the excavated (scraped) area. Excess material from the well pad was pushed up to add additional caliche to the access road. Sample point "H-1" represents the material that was used to backfill the scraped area. Refer to Figure 3 and Table 1 for the sample location and analytical results.

Based on the assessment and analytical data from the remediation, no further actions are required at the site. Cimarex formally requests the closure of the spill. If you have any questions regarding this report or need additional information, please contact us at 432-813-8988.

Sincerely,

Carmona Resources, LLC



Ashton Thielke
Environmental Manager

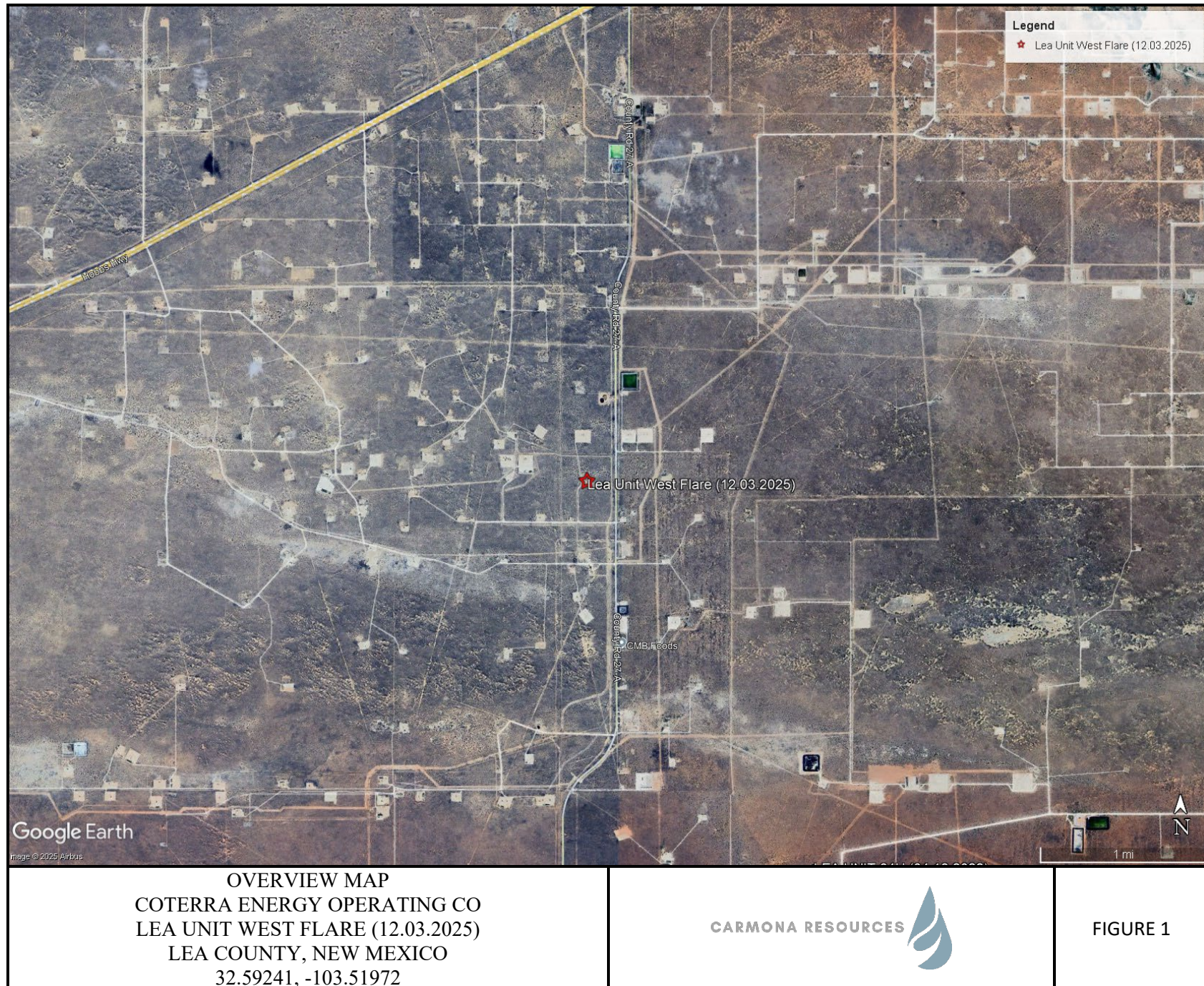


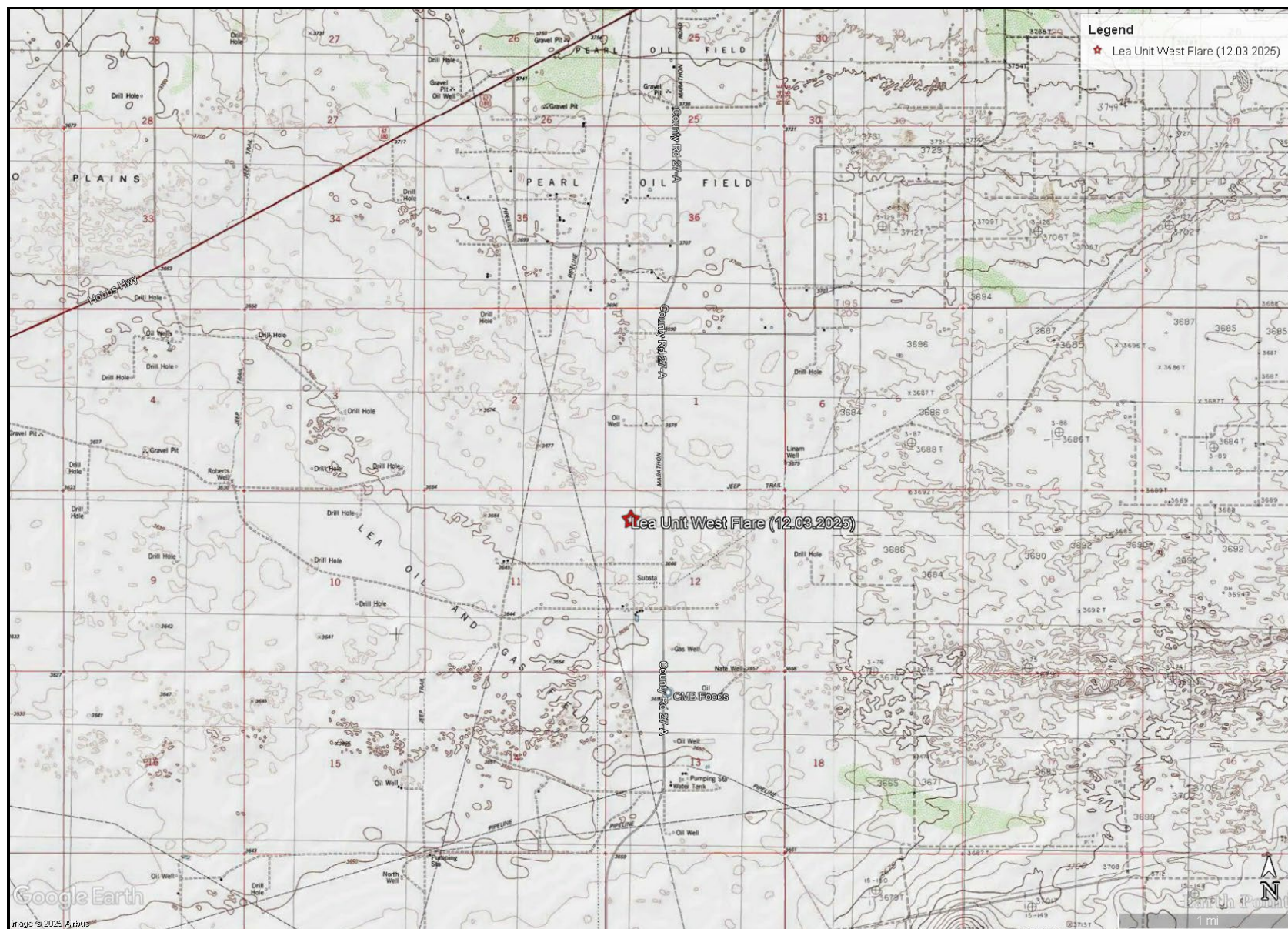
Riley Plogger
Project Manager

FIGURES

CARMONA RESOURCES







TOPOGRAPHIC MAP
COTERRA ENERGY OPERATING CO
LEA UNIT WEST FLARE (12.03.2025)
LEA COUNTY, NEW MEXICO
32.59241, -103.51972

CARMONA RESOURCES



FIGURE 2



APPENDIX A

CARMONA RESOURCES



Table 1
Coterra Energy Operating Co.
Lea Unit West Flare (12.03.2025)
Lea County, New Mexico

Sample ID	Date	Depth (ft)	TPH (mg/kg)				Benzene (mg/kg)	Toluene (mg/kg)	Ethlybenzene (mg/kg)	Xylene (mg/kg)	Total BTEX (mg/kg)	Chloride (mg/kg)
			GRO	DRO	MRO	Total						
CS-1	12/12/2025	0-0.25'	<50.0	85.7	<50.0	85.7	<0.00199	<0.00199	<0.00199	<0.00398	<0.00398	343
CS-2	12/12/2025	0-0.25'	<50.5	<50.5	<50.5	<50.5	<0.00200	<0.00200	<0.00200	<0.00399	<0.00399	182
CS-3	12/12/2025	0-0.25'	<50.0	<50.0	<50.0	<50.0	<0.00201	<0.00201	<0.00201	<0.00402	<0.00402	192
CS-4	12/12/2025	0-0.25'	<49.8	<49.8	<49.8	<49.8	<0.00199	<0.00199	<0.00199	<0.00398	<0.00398	64.0
H-1	12/12/2025	0-0.5'	<49.8	<49.8	<49.8	<49.8	<0.00200	<0.00200	<0.00200	<0.00400	<0.00400	18.0
H-2	12/12/2025	0-0.5'	<50.0	<50.0	<50.0	<50.0	<0.00200	<0.00200	<0.00200	<0.00399	<0.00399	24.1
H-3	12/12/2025	0-0.5'	<50.2	<50.2	<50.2	<50.2	<0.00201	<0.00201	<0.00201	<0.00402	<0.00402	156
H-4	12/12/2025	0-0.5'	<50.1	<50.1	<50.1	<50.1	<0.00202	<0.00202	<0.00202	<0.00404	<0.00404	86.4
Regulatory Criteria^A			1,000 mg/kg			2,500 mg/kg	10 mg/kg				50 mg/kg	20,000 mg/kg

(-) Not Analyzed

^A – Table 1 - 19.15.29 NMAC

mg/kg - milligram per kilogram

TPH - Total Petroleum Hydrocarbons

ft - feet

(CS) - Confirmation Sample

(H) - Horizontal Sample

APPENDIX B

CARMONA RESOURCES



PHOTOGRAPHIC LOG**Coterra Energy Operating Co****Photograph No. 1****Facility:** Lea Unit West Flare (12.03.2025)**County:** Lea County, New Mexico**Description:**

View Northeast, Area of CS-1 through CS-4.

**Photograph No. 2****Facility:** Lea Unit West Flare (12.03.2025)**County:** Lea County, New Mexico**Description:**

View Southwest, Area of CS-1 through CS-4.

**Photograph No. 3****Facility:** Lea Unit West Flare (12.03.2025)**County:** Lea County, New Mexico**Description:**

View East, Area of CS-1 though CS-4.



APPENDIX C

CARMONA RESOURCES



Sante Fe Main Office
Phone: (505) 476-3441

General Information
Phone: (505) 629-6116

Online Phone Directory
<https://www.emnrd.nm.gov/ocd/contact-us>

State of New Mexico
Energy, Minerals and Natural Resources
Oil Conservation Division
1220 S. St Francis Dr.
Santa Fe, NM 87505

QUESTIONS

Action 531554

QUESTIONS

Operator: Avant Operating, LLC 6001 Deauville Blvd Midland, TX 79706	OGRID: 330396
	Action Number: 531554
	Action Type: [NOTIFY] Notification Of Release (NOR)

QUESTIONS

Location of Release Source <i>Please answer all the questions in this group.</i>	
Site Name	Lea Unit West Flare
Date Release Discovered	12/03/2025
Surface Owner	Federal

Incident Details <i>Please answer all the questions in this group.</i>	
Incident Type	Fire
Did this release result in a fire or is the result of a fire	Yes
Did this release result in any injuries	No
Has this release reached or does it have a reasonable probability of reaching a watercourse	No
Has this release endangered or does it have a reasonable probability of endangering public health	No
Has this release substantially damaged or will it substantially damage property or the environment	No
Is this release of a volume that is or may with reasonable probability be detrimental to fresh water	No

Nature and Volume of Release <i>Material(s) released, please answer all that apply below. Any calculations or specific justifications for the volumes provided should be attached to the follow-up C-141 submission.</i>	
Crude Oil Released (bbls) Details	Cause: Human Error Other (Specify) Crude Oil Released: 0 BBL Recovered: 0 BBL Lost: 0 BBL.
Produced Water Released (bbls) Details	Not answered.
Is the concentration of chloride in the produced water >10,000 mg/l	Not answered.
Condensate Released (bbls) Details	Not answered.
Natural Gas Vented (Mcf) Details	Not answered.
Natural Gas Flared (Mcf) Details	Not answered.
Other Released Details	Not answered.
Are there additional details for the questions above (i.e. any answer containing Other, Specify, Unknown, and/or Fire, or any negative lost amounts)	We had a reportable fire at the Lea Unit West Flare due to fluid carrying over to the flare. It was discovered that a valve on the air compressor supply line was closed, resulting in fluid carrying over from the separator to the flare. The fire was extinguished by the Hobbs Fire Department. Minor damage occurred to the flare and no injuries or impact to the environment resulted from the incident. We will be scheduling an assessment and remediation of the affected area in the coming weeks. Released: 0.01 barrels of crude oil Recovered: 0 barrels

Sante Fe Main Office
Phone: (505) 476-3441

General Information
Phone: (505) 629-6116

Online Phone Directory
<https://www.emnrd.nm.gov/ocd/contact-us>

State of New Mexico
Energy, Minerals and Natural Resources
Oil Conservation Division
1220 S. St Francis Dr.
Santa Fe, NM 87505

QUESTIONS, Page 2

Action 531554

QUESTIONS (continued)

Operator: Avant Operating, LLC 6001 Deauville Blvd Midland, TX 79706	OGRID: 330396
	Action Number: 531554
	Action Type: [NOTIFY] Notification Of Release (NOR)

QUESTIONS

Nature and Volume of Release (continued)	
Is this a gas only submission (i.e. only significant Mcf values reported)	More volume information must be supplied to determine if this will be treated as a "gas only" report.
Was this a major release as defined by Subsection A of 19.15.29.7 NMAC	Yes
Reasons why this would be considered a submission for a notification of a major release	From paragraph A. "Major release" determine using: (2) an unauthorized release of a volume that: (a) results in a fire or is the result of a fire.
With the implementation of the 19.15.27 NMAC (05/25/2021), venting and/or flaring of natural gas (i.e. gas only) are to be submitted on the C-129 form.	

Initial Response

The responsible party must undertake the following actions immediately unless they could create a safety hazard that would result in injury.

The source of the release has been stopped	True
The impacted area has been secured to protect human health and the environment	True
Released materials have been contained via the use of berms or dikes, absorbent pads, or other containment devices	True
All free liquids and recoverable materials have been removed and managed appropriately	True
If all the actions described above have not been undertaken, explain why	Not answered.

Per Paragraph 4 of Subsection B of 19.15.29.8 NMAC the responsible party may commence remediation immediately after discovery of a release. If remediation has begun, please prepare and attach a narrative of actions to date in the follow-up C-141 submission. If remedial efforts have been successfully completed or if the release occurred within a lined containment area (see 19.15.29.11(A)(5)(a) NMAC), please prepare and attach all information needed for closure evaluation in the follow-up C-141 submission.

Sante Fe Main Office
Phone: (505) 476-3441

General Information
Phone: (505) 629-6116

Online Phone Directory
<https://www.emnrd.nm.gov/ocd/contact-us>

State of New Mexico
Energy, Minerals and Natural Resources
Oil Conservation Division
1220 S. St Francis Dr.
Santa Fe, NM 87505

ACKNOWLEDGMENTS

Action 531554

ACKNOWLEDGMENTS

Operator: Avant Operating, LLC 6001 Deauville Blvd Midland, TX 79706	OGRID: 330396
	Action Number: 531554
	Action Type: [NOTIFY] Notification Of Release (NOR)

ACKNOWLEDGMENTS

<input checked="" type="checkbox"/>	I acknowledge that I am authorized to submit notification of a release on behalf of my operator.
<input checked="" type="checkbox"/>	I acknowledge that upon submitting this application, I will be creating a new incident file (assigned to my operator) to track the notification(s) and corrective action(s) for a release, pursuant to NMAC 19.15.29.
<input checked="" type="checkbox"/>	I acknowledge that creating a new incident file will require my operator to file subsequent submission(s) of form "C-141, Application for administrative approval of a release notification and corrective action", pursuant to NMAC 19.15.29.
<input checked="" type="checkbox"/>	I hereby certify that the information given above is true and complete to the best of my knowledge and understand that pursuant to OCD rules and regulations all operators are required to report and/or file certain release notifications and perform corrective actions for releases which may endanger public health or the environment.
<input checked="" type="checkbox"/>	I acknowledge the fact that the acceptance of a C-141 report by the OCD does not relieve the operator of liability should their operations have failed to adequately investigate and remediate contamination that pose a threat to groundwater, surface water, human health or the environment.
<input checked="" type="checkbox"/>	I acknowledge the fact that, in addition, OCD acceptance of a C-141 report does not relieve the operator of responsibility for compliance with any other federal, state, or local laws and/or regulations.

Sante Fe Main Office
Phone: (505) 476-3441

General Information
Phone: (505) 629-6116

Online Phone Directory
<https://www.emnrd.nm.gov/ocd/contact-us>

State of New Mexico
Energy, Minerals and Natural Resources
Oil Conservation Division
1220 S. St Francis Dr.
Santa Fe, NM 87505

CONDITIONS

Action 531554

CONDITIONS

Operator: Avant Operating, LLC 6001 Deauville Blvd Midland, TX 79706	OGRID: 330396
	Action Number: 531554
	Action Type: [NOTIFY] Notification Of Release (NOR)

CONDITIONS

Created By	Condition	Condition Date
lluig	When submitting future reports regarding this release, please submit the calculations used or specific justification for the volumes reported on the initial C-141.	12/3/2025

AVANT OPERATING
LEA UNIT WEST FLARE
LEA, NM

11:12



< Home

Saturated Soil Calculation

Lea West Flare Fire

L(Ft)

W(Ft)

D(In)

Oil %

595

1

0.01

100



Soil Definitions



SOIL TYPE FACTOR

0.08

0.14

0.16

0.25

0.15

H₂O Spill Total: 0.00 Bbls

Oil Spill Total: 0.01 Bbls

Total Spilled: 0.01 Bbls

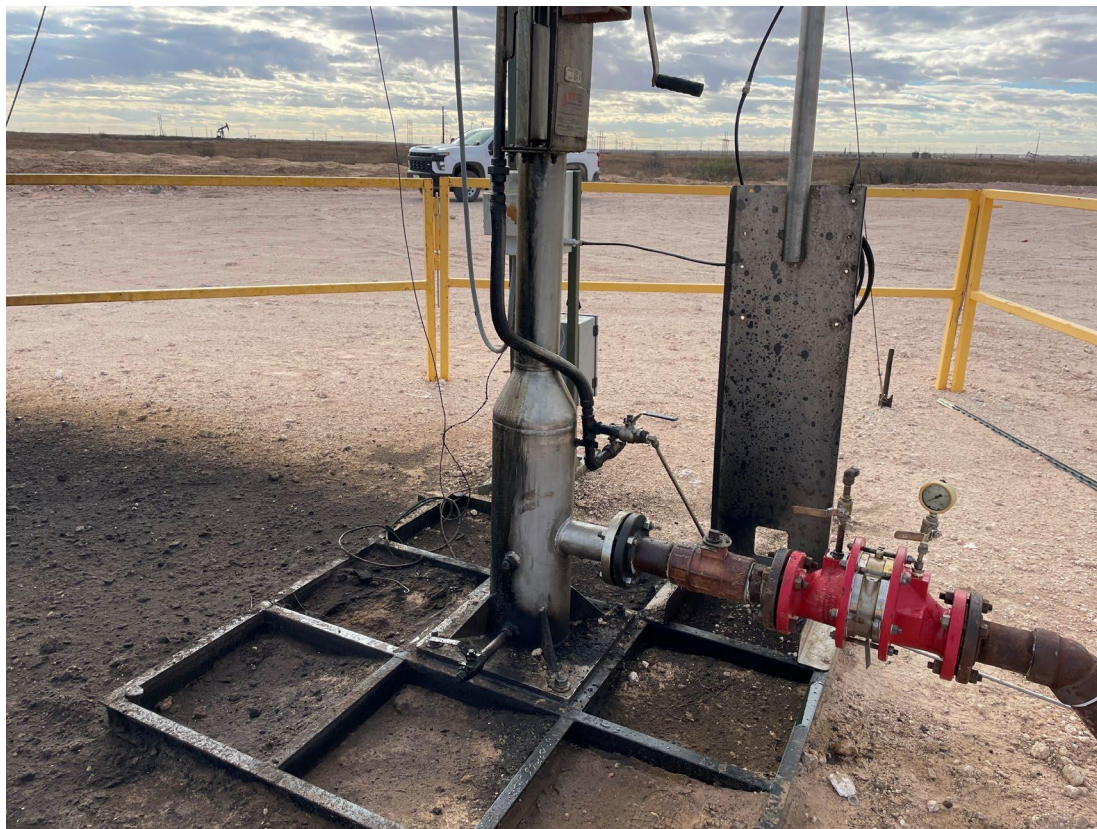
Total Spilled: 0.52 Gals

Add Section to Spill

AVANT OPERATING
LEA UNIT WEST FLARE
LEA, NM



AVANT OPERATING
LEA UNIT WEST FLARE
LEA, NM



Sante Fe Main Office
Phone: (505) 476-3441

General Information
Phone: (505) 629-6116

Online Phone Directory
<https://www.emnrd.nm.gov/ocd/contact-us>

State of New Mexico
Energy, Minerals and Natural Resources
Oil Conservation Division
1220 S. St Francis Dr.
Santa Fe, NM 87505

QUESTIONS

Action 532201

QUESTIONS

Operator: Avant Operating, LLC 6001 Deauville Blvd Midland, TX 79706	OGRID: 330396
	Action Number: 532201
	Action Type: [C-141] Initial C-141 (C-141-v-Initial)

QUESTIONS

Prerequisites	
Incident ID (n#)	nAPP2533752426
Incident Name	NAPP2533752426 LEA UNIT WEST FLARE @ D-12-20S-34E
Incident Type	Fire
Incident Status	Initial C-141 Received

Location of Release Source	
<i>Please answer all the questions in this group.</i>	
Site Name	Lea Unit West Flare
Date Release Discovered	12/03/2025
Surface Owner	Federal

Incident Details	
<i>Please answer all the questions in this group.</i>	
Incident Type	Fire
Did this release result in a fire or is the result of a fire	Yes
Did this release result in any injuries	No
Has this release reached or does it have a reasonable probability of reaching a watercourse	No
Has this release endangered or does it have a reasonable probability of endangering public health	No
Has this release substantially damaged or will it substantially damage property or the environment	No
Is this release of a volume that is or may with reasonable probability be detrimental to fresh water	No

Nature and Volume of Release	
<i>Material(s) released, please answer all that apply below. Any calculations or specific justifications for the volumes provided should be attached to the follow-up C-141 submission.</i>	
Crude Oil Released (bbls) Details	Cause: Human Error Other (Specify) Crude Oil Released: 0 BBL Recovered: 0 BBL Lost: 0 BBL.
Produced Water Released (bbls) Details	Not answered.
Is the concentration of chloride in the produced water >10,000 mg/l	No
Condensate Released (bbls) Details	Not answered.
Natural Gas Vented (Mcf) Details	Not answered.
Natural Gas Flared (Mcf) Details	Not answered.
Other Released Details	Not answered.
Are there additional details for the questions above (i.e. any answer containing Other, Specify, Unknown, and/or Fire, or any negative lost amounts)	We had a reportable fire at the Lea Unit West Flare due to fluid carrying over to the flare. It was discovered that a valve on the air compressor supply line was closed, resulting in fluid carrying over from the separator to the flare. The fire was extinguished by the Hobbs Fire Department. Minor damage occurred to the flare and no injuries or impact to the environment resulted from the incident. We will be scheduling an assessment and remediation of the affected area in the coming weeks. Released: 0.01 barrels of crude oil Recovered: 0 barrels

Sante Fe Main Office
Phone: (505) 476-3441

General Information
Phone: (505) 629-6116

Online Phone Directory
<https://www.emnrd.nm.gov/ocd/contact-us>

State of New Mexico
Energy, Minerals and Natural Resources
Oil Conservation Division
1220 S. St Francis Dr.
Santa Fe, NM 87505

QUESTIONS, Page 2

Action 532201

QUESTIONS (continued)

Operator: Avant Operating, LLC 6001 Deauville Blvd Midland, TX 79706	OGRID: 330396
	Action Number: 532201
	Action Type: [C-141] Initial C-141 (C-141-v-Initial)

QUESTIONS

Nature and Volume of Release (continued)	
Is this a gas only submission (i.e. only significant Mcf values reported)	More info needed to determine if this will be treated as a "gas only" report.
Was this a major release as defined by Subsection A of 19.15.29.7 NMAC	Yes
Reasons why this would be considered a submission for a notification of a major release	From paragraph A. "Major release" determine using: (2) an unauthorized release of a volume that: (a) results in a fire or is the result of a fire.
<i>With the implementation of the 19.15.27 NMAC (05/25/2021), venting and/or flaring of natural gas (i.e. gas only) are to be submitted on the C-129 form.</i>	

Initial Response

The responsible party must undertake the following actions immediately unless they could create a safety hazard that would result in injury.

The source of the release has been stopped	True
The impacted area has been secured to protect human health and the environment	True
Released materials have been contained via the use of berms or dikes, absorbent pads, or other containment devices	True
All free liquids and recoverable materials have been removed and managed appropriately	True
If all the actions described above have not been undertaken, explain why	Not answered.

Per Paragraph (4) of Subsection B of 19.15.29.8 NMAC the responsible party may commence remediation immediately after discovery of a release. If remediation has begun, please prepare and attach a narrative of actions to date in the follow-up C-141 submission. If remedial efforts have been successfully completed or if the release occurred within a lined containment area (see Subparagraph (a) of Paragraph (5) of Subsection A of 19.15.29.11 NMAC), please prepare and attach all information needed for closure evaluation in the follow-up C-141 submission.

I hereby certify that the information given above is true and complete to the best of my knowledge and understand that pursuant to OCD rules and regulations all operators are required to report and/or file certain release notifications and perform corrective actions for releases which may endanger public health or the environment. The acceptance of a C-141 report by the OCD does not relieve the operator of liability should their operations have failed to adequately investigate and remediate contamination that pose a threat to groundwater, surface water, human health or the environment. In addition, OCD acceptance of a C-141 report does not relieve the operator of responsibility for compliance with any other federal, state, or local laws and/or regulations.

I hereby agree and sign off to the above statement	Name: Laci Luig Title: ES&H Specialist Email: DL_PermianEnvironmental@coterra.com Date: 12/05/2025
--	---

Sante Fe Main Office
Phone: (505) 476-3441

General Information
Phone: (505) 629-6116

Online Phone Directory
<https://www.emnrd.nm.gov/ocd/contact-us>

State of New Mexico
Energy, Minerals and Natural Resources
Oil Conservation Division
1220 S. St Francis Dr.
Santa Fe, NM 87505

QUESTIONS, Page 3

Action 532201

QUESTIONS (continued)

Operator: Avant Operating, LLC 6001 Deauville Blvd Midland, TX 79706	OGRID: 330396
	Action Number: 532201
	Action Type: [C-141] Initial C-141 (C-141-v-Initial)

QUESTIONS

Site Characterization	
<i>Please answer all the questions in this group (only required when seeking remediation plan approval and beyond). This information must be provided to the appropriate district office no later than 90 days after the release discovery date.</i>	
What is the shallowest depth to groundwater beneath the area affected by the release in feet below ground surface (ft bgs)	Not answered.
What method was used to determine the depth to ground water	Not answered.
Did this release impact groundwater or surface water	Not answered.
What is the minimum distance, between the closest lateral extents of the release and the following surface areas:	
A continuously flowing watercourse or any other significant watercourse	Not answered.
Any lakebed, sinkhole, or playa lake (measured from the ordinary high-water mark)	Not answered.
An occupied permanent residence, school, hospital, institution, or church	Not answered.
A spring or a private domestic fresh water well used by less than five households for domestic or stock watering purposes	Not answered.
Any other fresh water well or spring	Not answered.
Incorporated municipal boundaries or a defined municipal fresh water well field	Not answered.
A wetland	Not answered.
A subsurface mine	Not answered.
An (non-karst) unstable area	Not answered.
Categorize the risk of this well / site being in a karst geology	Not answered.
A 100-year floodplain	Not answered.
Did the release impact areas not on an exploration, development, production, or storage site	Not answered.

Remediation Plan	
<i>Please answer all the questions that apply or are indicated. This information must be provided to the appropriate district office no later than 90 days after the release discovery date.</i>	
Requesting a remediation plan approval with this submission	No
<i>The OCD recognizes that proposed remediation measures may have to be minimally adjusted in accordance with the physical realities encountered during remediation. If the responsible party has any need to significantly deviate from the remediation plan proposed, then it should consult with the division to determine if another remediation plan submission is required.</i>	

Sante Fe Main Office
Phone: (505) 476-3441

General Information
Phone: (505) 629-6116

Online Phone Directory
<https://www.emnrd.nm.gov/ocd/contact-us>

State of New Mexico
Energy, Minerals and Natural Resources
Oil Conservation Division
1220 S. St Francis Dr.
Santa Fe, NM 87505

CONDITIONS

Action 532201

CONDITIONS

Operator: Avant Operating, LLC 6001 Deauville Blvd Midland, TX 79706	OGRID: 330396
	Action Number: 532201
	Action Type: [C-141] Initial C-141 (C-141-v-Initial)

CONDITIONS

Created By	Condition	Condition Date
scwells	None	12/5/2025

Sante Fe Main Office
Phone: (505) 476-3441

General Information
Phone: (505) 629-6116

Online Phone Directory
<https://www.emnrd.nm.gov/ocd/contact-us>

State of New Mexico
Energy, Minerals and Natural Resources
Oil Conservation Division
1220 S. St Francis Dr.
Santa Fe, NM 87505

QUESTIONS

Action 532109

QUESTIONS

Operator: Avant Operating, LLC 6001 Deauville Blvd Midland, TX 79706	OGRID: 330396
	Action Number: 532109
	Action Type: [NOTIFY] Notification Of Sampling (C-141N)

QUESTIONS

Prerequisites	
Incident ID (n#)	nAPP2533752426
Incident Name	NAPP2533752426 LEA UNIT WEST FLARE @ D-12-20S-34E
Incident Type	Fire
Incident Status	Notification Accepted

Location of Release Source

Site Name	Lea Unit West Flare
Date Release Discovered	12/03/2025
Surface Owner	Federal

Sampling Event General Information*Please answer all the questions in this group.*

What is the sampling surface area in square feet	650
What is the estimated number of samples that will be gathered	10
Sampling date pursuant to Subparagraph (a) of Paragraph (1) of Subsection D of 19.15.29.12 NMAC	12/12/2025
Time sampling will commence	09:00 AM
Please provide any information necessary for observers to contact samplers	Carmona Resources - 432-813-8988 Composite confirmation surface samples will be collected and horizontal grab samples will be collected since a surface scrape less than 3 inches occurred to remove all stained soil from the fire.
Please provide any information necessary for navigation to sampling site	32.592617°, -103.520205°

Sante Fe Main Office
Phone: (505) 476-3441

General Information
Phone: (505) 629-6116

Online Phone Directory
<https://www.emnrd.nm.gov/ocd/contact-us>

State of New Mexico
Energy, Minerals and Natural Resources
Oil Conservation Division
1220 S. St Francis Dr.
Santa Fe, NM 87505

CONDITIONS

Action 532109

CONDITIONS

Operator: Avant Operating, LLC 6001 Deauville Blvd Midland, TX 79706	OGRID: 330396
	Action Number: 532109
	Action Type: [NOTIFY] Notification Of Sampling (C-141N)

CONDITIONS

Created By	Condition	Condition Date
athielke	Failure to notify the OCD of sampling events including any changes in date/time per the requirements of 19.15.29.12.D.(1).(a) NMAC, may result in the remediation closure samples not being accepted.	12/5/2025
athielke	If confirmation sampling is going to take place over multiple days, individual C-141N applications must be submitted for each sampling date. Date ranges are not currently accepted on the C-141N application.	12/5/2025

APPENDIX D

CARMONA RESOURCES



Nearest water well

Coterra Energy Operating Co.

Legend

- 0.05 Miles
- 0.50 Mile Radius
- Groundwater Determination Bore
- Lea Federal Unit 21H (04.05.2025)

Lea Federal Unit 21H (04.05.2025)

105' GWDB - Drilled 2025



2000 ft

Low Karst

Coterra Energy Operating Co.

Legend

- Lea Federal Unit 21H (04.05.2025)
- Low

Lea Federal Unit 21H (04.05.2025)





New Mexico Office of the State Engineer

Water Column/Average Depth to Water

(A CLW##### in the POD suffix indicates the POD has been replaced & no longer serves a water right file.)

(R=POD has been replaced, O=orphaned, C=the file is closed)

(quarters are smallest to largest)

POD Number	Code	Sub basin	County	Q64	Q16	Q4	Sec	Tws	Range	X	Y	Map	(meters)	(In feet)		
													Distance	Well Depth	Depth Water	Water Column
CP 00654 POD1		CP	LE		SE	SE	12	20S	34E	640103.0	3605947.0 *		1662	60		
L 04157		L	LE		SW	SW	06	20S	35E	640483.0	3607561.0 *		1676	70	64	6
CP 00655 POD1		CP	LE		SW	NW	14	20S	34E	637294.0	3605108.0 *		2523	210		
CP 01672 POD1		CP	LE	NW	SW	NW	36	19S	34E	638735.9	3610009.6		2940	100		
CP 00656 POD1		CP	LE	SE	SE	SE	04	20S	34E	635342.0	3607391.0 *		3551	225		
CP 00800 POD1		CP	LE	NE	NE	NE	22	20S	34E	637007.0	3603994.0 *		3602	220		
CP 00683 POD1		CP	LE	SW	SW	SE	25	19S	34E	639530.0	3610685.0 *		3670	120	28	92

Average Depth to Water: 46 feet

Minimum Depth: 28 feet

Maximum Depth: 64 feet

Record Count: 7

UTM Filters (in meters):

Easting: 638878.83
Northing: 3607072.24
Radius: 4000

* UTM location was derived from PLSS - see Help

The data is furnished by the NMOSE/ISC and is accepted by the recipient with the expressed understanding that the OSE/ISC make no warranties, expressed or implied, concerning the accuracy, completeness, reliability, usability, or suitability for any particular purpose of the data.



WELL RECORD & LOG

OFFICE OF THE STATE ENGINEER

www.ose.state.nm.us

1. GENERAL AND WELL LOCATION	OSE POD NO. (WELL NO.) Pod 1		WELL TAG ID NO.		OSE FILE NO(S). CP-2083			
	WELL OWNER NAME(S) Coterra Energy				PHONE (OPTIONAL)			
	WELL OWNER MAILING ADDRESS 840 Gessner Rd. Ste. 1400				CITY Houston	STATE TX	ZIP 77024-4152	
	WELL LOCATION (FROM GPS)	DEGREES LATITUDE	MINUTES 32	SECONDS 35	32.0	N	* ACCURACY REQUIRED: ONE TENTH OF A SECOND * DATUM REQUIRED: WGS 84	
		LONGITUDE	103	31	9.5	W		
DESCRIPTION RELATING WELL LOCATION TO STREET ADDRESS AND COMMON LANDMARKS – PLSS (SECTION, TOWNSHIP, RANGE) WHERE AVAILABLE Section 12 Township 20s Range 34e. West of 27-A (Marathon Rd.)								
2. DRILLING & CASING INFORMATION	LICENSE NO. WD-1862		NAME OF LICENSED DRILLER James Hawley			NAME OF WELL DRILLING COMPANY H&R Enterprises, LLC		
	DRILLING STARTED 9-3-25		DRILLING ENDED 9-3-25		DEPTH OF COMPLETED WELL (FT) 105'	BORE HOLE DEPTH (FT) 105'	DEPTH WATER FIRST ENCOUNTERED (FT) N/A	
	COMPLETED WELL IS: <input type="checkbox"/> ARTESIAN <input checked="" type="checkbox"/> DRY HOLE <input type="checkbox"/> SHALLOW (UNCONFINED)					STATIC WATER LEVEL IN COMPLETED WELL (FT) N/A		
	DRILLING FLUID: <input checked="" type="checkbox"/> AIR <input type="checkbox"/> MUD ADDITIVES – SPECIFY:							
	DRILLING METHOD: <input checked="" type="checkbox"/> ROTARY <input type="checkbox"/> HAMMER <input type="checkbox"/> CABLE TOOL <input type="checkbox"/> OTHER – SPECIFY:							
	DEPTH (feet bgl)		BORE HOLE DIAM (inches)	CASING MATERIAL AND/OR GRADE (include each casing string, and note sections of screen)	CASING CONNECTION TYPE (add coupling diameter)	CASING INSIDE DIAM. (inches)	CASING WALL THICKNESS (inches)	SLOT SIZE (inches)
	FROM	TO						
	0	105'	6"	No casing left in hole				
3. ANNULAR MATERIAL	DEPTH (feet bgl)		BORE HOLE DIAM. (inches)	LIST ANNULAR SEAL MATERIAL AND GRAVEL PACK SIZE-RANGE BY INTERVAL	AMOUNT (cubic feet)	METHOD OF PLACEMENT		
	FROM	TO						
				N/A				


FOR OSE INTERNAL USE

WR-20 WELL RECORD & LOG (Version 04/30/19)

FILE NO.	POD NO.	TRN NO.
LOCATION	WELL TAG ID NO.	PAGE 1 OF 2

4. HYDROGEOLOGIC LOG OF WELL	DEPTH (feet bgl)		THICKNESS (feet)	COLOR AND TYPE OF MATERIAL ENCOUNTERED - INCLUDE WATER-BEARING CAVITIES OR FRACTURE ZONES (attach supplemental sheets to fully describe all units)	WATER BEARING? (YES / NO)	ESTIMATED YIELD FOR WATER- BEARING ZONES (gpm)
	FROM	TO				
	0'	5'	5'	Sandy Caliche	Y ✓ N	
	5'	10'	5'	Sand	Y ✓ N	
	10'	20'	10'	Caliche	Y ✓ N	
	20'	45'	25'	Sand	Y ✓ N	
	45'	50'	5'	Caliche	Y ✓ N	
	50'	60'	10'	Sandy Red Clay	Y ✓ N	
	60'	105'	45'	Red Clay	Y ✓ N	
					Y N	
					Y N	
					Y N	
					Y N	
					Y N	
					Y N	
					Y N	
					Y N	
					Y N	
					Y N	
					Y N	
					Y N	
					Y N	
					Y N	
					Y N	
METHOD USED TO ESTIMATE YIELD OF WATER-BEARING STRATA: <input type="checkbox"/> PUMP <input type="checkbox"/> AIR LIFT <input type="checkbox"/> BAILER <input checked="" type="checkbox"/> OTHER - SPECIFY: dry hole					TOTAL ESTIMATED WELL YIELD (gpm): 0.00	

5. TEST; RIG SUPERVISION	WELL TEST	TEST RESULTS - ATTACH A COPY OF DATA COLLECTED DURING WELL TESTING, INCLUDING DISCHARGE METHOD, START TIME, END TIME, AND A TABLE SHOWING DISCHARGE AND DRAWDOWN OVER THE TESTING PERIOD.
	MISCELLANEOUS INFORMATION: Depth to groundwater bore was gauged for water on 9-8-25. DTGW bore was dry. Temporary well casing was removed, bore hole was backfilled with drill cuttings to 10' BGS. Hydrated bentonite hole plug was poured from 10' BGS to surface. Lea Unit Fed #21	
	PRINT NAME(S) OF DRILL RIG SUPERVISOR(S) THAT PROVIDED ONSITE SUPERVISION OF WELL CONSTRUCTION OTHER THAN LICENSEE: Nathan Smelcer	

6. SIGNATURE	BY SIGNING BELOW, I CERTIFY THAT TO THE BEST OF MY KNOWLEDGE AND BELIEF, THE FOREGOING IS A TRUE AND CORRECT RECORD OF THE ABOVE DESCRIBED WELL. I ALSO CERTIFY THAT THE WELL TAG, IF REQUIRED, HAS BEEN INSTALLED AND THAT THIS WELL RECORD WILL ALSO BE FILED WITH THE PERMIT HOLDER WITHIN 30 DAYS AFTER THE COMPLETION OF WELL DRILLING.	
	 SIGNATURE OF DRILLER / PRINT SIGNEE NAME	James Hawley 9/8/25 DATE

FOR OSE INTERNAL USE		WR-20 WELL RECORD & LOG (Version 04/30/2019)	
FILE NO.	POD NO.	TRN NO.	
LOCATION	WELL TAG ID NO.		PAGE 2 OF 2



PLUGGING RECORD



NOTE: A Well Plugging Plan of Operations shall be approved by the State Engineer prior to plugging - 19.27.4 NMAC

I. GENERAL / WELL OWNERSHIP:

State Engineer Well Number: CP-2083 Pod 1

Well owner: Coterra Energy

Phone No.: 432-208-3035

Mailing address: 840 Gessner Rd. Ste. 1400

City: Houston

State: TX

Zip code: 77024-4152

II. WELL PLUGGING INFORMATION:

- 1) Name of well drilling company that plugged well: H&R Enterprises, LLC
- 2) New Mexico Well Driller License No.: WD-1862 Expiration Date: 6/16/27
- 3) Well plugging activities were supervised by the following well driller(s)/rig supervisor(s):
Nathan Smelcer
- 4) Date well plugging began: 9-8-25 Date well plugging concluded: 9-8-25
- 5) GPS Well Location: Latitude: 32 deg, 35 min, 32.0 sec
Longitude: 103 deg, 31 min, 9.5 sec, WGS 84
- 6) Depth of well confirmed at initiation of plugging as: 105 ft below ground level (bgl),
by the following manner: well sounder
- 7) Static water level measured at initiation of plugging: N/A ft bgl
- 8) Date well plugging plan of operations was approved by the State Engineer: 7/16/25
- 9) Were all plugging activities consistent with an approved plugging plan? yes If not, please describe differences between the approved plugging plan and the well as it was plugged (attach additional pages as needed):

- For each interval plugged, describe within the following columns:**

MULTIPLY		BY	AND OBTAIN
cubic feet	x	7.4805	= gallons
cubic yards	x	201.97	= gallons

I, James Hawley, say that I am familiar with the rules of the Office of the State Engineer pertaining to the plugging of wells and that each and all of the statements in this Plugging Record and attachments are true to the best of my knowledge and belief.

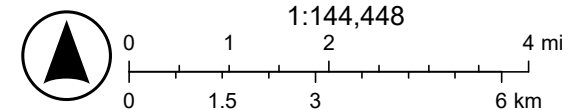
Date _____

Lea Federal Unit 21H (04.05.2025)



5/2/2025

World_Hillshade






Esri, NASA, NGA, USGS, Sources: Esri, TomTom, Garmin, FAO, NOAA, USGS, (c) OpenStreetMap contributors, and the GIS User Community

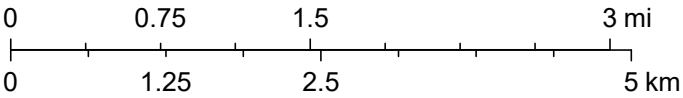
Lea Federal Unit 21H (04.05.2025)



5/2/2025, 7:43:04 AM

-  OSW Water Bodys
-  OSE Probable Playas
-  OSE Streams

1:72,224



Esri, NASA, NGA, USGS, FEMA, Sources: Esri, TomTom, Garmin, FAO, NOAA, USGS, © OpenStreetMap contributors, and the GIS User Community, NM OSE

APPENDIX E

CARMONA RESOURCES





Environment Testing

- 1
- 2
- 3
- 4
- 5
- 6
- 7
- 8
- 9
- 10
- 11
- 12
- 13
- 14

ANALYTICAL REPORT

PREPARED FOR

Attn: Ashton Thielke
Carmona Resources
310 W Wall St
Ste 500
Midland, Texas 79701

Generated 12/22/2025 1:58:23 PM

JOB DESCRIPTION

Lea Unit West Flare (12.03.2025)
Lea County New Mexico

JOB NUMBER

880-66088-1

Eurofins Midland
1211 W. Florida Ave
Midland TX 79701

Eurofins Midland

Job Notes

This report may not be reproduced except in full, and with written approval from the laboratory. The results relate only to the samples tested. For questions please contact the Project Manager at the e-mail address or telephone number listed on this page.

Analytical test results meet all requirements of the associated regulatory program (i.e., NELAC (TNI), DoD, and ISO 17025) unless otherwise noted under the individual analysis.

Authorization



Generated
12/22/2025 1:58:23 PM

Authorized for release by
Jessica Kramer, Project Manager
Jessica.Kramer@et.eurofinsus.com
(432)704-5440

Client: Carmona Resources
Project/Site: Lea Unit West Flare (12.03.2025)

Laboratory Job ID: 880-66088-1
SDG: Lea County New Mexico

Table of Contents

Cover Page	1
Table of Contents	3
Definitions/Glossary	4
Case Narrative	5
Client Sample Results	6
Surrogate Summary	9
QC Sample Results	10
QC Association Summary	14
Lab Chronicle	16
Certification Summary	18
Method Summary	19
Sample Summary	20
Chain of Custody	21
Receipt Checklists	22

- 1
- 2
- 3
- 4
- 5
- 6
- 7
- 8
- 9
- 10
- 11
- 12
- 13
- 14

Definitions/Glossary

Client: Carmona Resources
Project/Site: Lea Unit West Flare (12.03.2025)

Job ID: 880-66088-1
SDG: Lea County New Mexico

Qualifiers

GC VOA

Qualifier	Qualifier Description
*+	LCS and/or LCSD is outside acceptance limits, high biased.
S1+	Surrogate recovery exceeds control limits, high biased.
U	Indicates the analyte was analyzed for but not detected.

GC Semi VOA

Qualifier	Qualifier Description
S1+	Surrogate recovery exceeds control limits, high biased.
U	Indicates the analyte was analyzed for but not detected.

HPLC/IC

Qualifier	Qualifier Description
U	Indicates the analyte was analyzed for but not detected.

Glossary

Abbreviation	These commonly used abbreviations may or may not be present in this report.
☼	Listed under the "D" column to designate that the result is reported on a dry weight basis
%R	Percent Recovery
CFL	Contains Free Liquid
CFU	Colony Forming Unit
CNF	Contains No Free Liquid
DER	Duplicate Error Ratio (normalized absolute difference)
Dil Fac	Dilution Factor
DL	Detection Limit (DoD/DOE)
DL, RA, RE, IN	Indicates a Dilution, Re-analysis, Re-extraction, or additional Initial metals/anion analysis of the sample
DLC	Decision Level Concentration (Radiochemistry)
EDL	Estimated Detection Limit (Dioxin)
LOD	Limit of Detection (DoD/DOE)
LOQ	Limit of Quantitation (DoD/DOE)
MCL	EPA recommended "Maximum Contaminant Level"
MDA	Minimum Detectable Activity (Radiochemistry)
MDC	Minimum Detectable Concentration (Radiochemistry)
MDL	Method Detection Limit
ML	Minimum Level (Dioxin)
MPN	Most Probable Number
MQL	Method Quantitation Limit
NC	Not Calculated
ND	Not Detected at the reporting limit (or MDL or EDL if shown)
NEG	Negative / Absent
POS	Positive / Present
PQL	Practical Quantitation Limit
PRES	Presumptive
QC	Quality Control
RER	Relative Error Ratio (Radiochemistry)
RL	Reporting Limit or Requested Limit (Radiochemistry)
RPD	Relative Percent Difference, a measure of the relative difference between two points
TEF	Toxicity Equivalent Factor (Dioxin)
TEQ	Toxicity Equivalent Quotient (Dioxin)
TNTC	Too Numerous To Count

Case Narrative

Client: Carmona Resources
Project: Lea Unit West Flare (12.03.2025)

Job ID: 880-66088-1

Job ID: 880-66088-1

Eurofins Midland

Job Narrative
880-66088-1

The analytical test results presented in this report meet all requirements of the associated regulatory program listed on the Accreditation/Certification Summary Page, unless otherwise noted. Data qualifiers and/or narrative comments are included to explain any exceptions, if applicable. Regulated compliance samples (e.g. SDWA, NPDES) must comply with associated agency requirements/permits.

- Matrix-specific batch QC (e.g., MS, MSD, SD) may not be reported when insufficient sample volume is available or when site-specific QC samples are not submitted. In such cases, a Laboratory Control Sample Duplicate (LCSD) may be analyzed to provide precision data for the batch.
- For samples analyzed using surrogate and/or isotope dilution analytes, any recoveries falling outside of established acceptance criteria are re-prepared and/or re-analyzed to confirm results, unless the deviation is due to sample dilution or otherwise explained in the case narrative.

Receipt

The samples were received on 12/12/2025 1:26 PM. Unless otherwise noted below, the samples arrived in good condition, and, where required, properly preserved and on ice. The temperature of the cooler at receipt time was 3.5°C.

GC VOA

Method 8021B: The laboratory control sample duplicate (LCSD) associated with preparation batch 880-127065 and analytical batch 880-127051 was outside acceptance criteria. Re-extraction and/or re-analysis could not be performed; therefore, the data have been reported. The batch matrix spike/matrix spike duplicate (MS/MSD) was within acceptance limits and may be used to evaluate matrix performance.

Method 8021B: Surrogate recovery for the following samples were outside control limits: CS -1 (0-0.25') (880-66088-1), CS -2 (0-0.25') (880-66088-2), CS -3 (0-0.25') (880-66088-3), CS -4 (0-0.25') (880-66088-4) and (CCV 880-127051/33). Evidence of matrix interference is present; therefore, re-extraction and/or re-analysis was not performed.

Method 8021B: The surrogate recovery for the blank associated with preparation batch 880-127065 and analytical batch 880-127051 was outside the upper control limits.

Method 8021B: Surrogate recovery for the following samples were outside control limits: (LCS 880-127065/1-A), (LCSD 880-127065/2-A), (890-9241-A-8-E), (890-9241-A-8-C MS) and (890-9241-A-8-D MSD). Evidence of matrix interferences is not obvious.

No additional analytical or quality issues were noted, other than those described above or in the Definitions/ Glossary page.

Diesel Range Organics

Method 8015MOD_NM: Surrogate recovery for the following sample was outside control limits: (880-66087-A-23-B MS). Evidence of matrix interference is present; therefore, re-extraction and/or re-analysis was not performed.

No additional analytical or quality issues were noted, other than those described above or in the Definitions/ Glossary page.

HPLC/IC

No additional analytical or quality issues were noted, other than those described above or in the Definitions/ Glossary page.

Eurofins Midland

Client Sample Results

Client: Carmona Resources
Project/Site: Lea Unit West Flare (12.03.2025)

Job ID: 880-66088-1
SDG: Lea County New Mexico

Client Sample ID: CS -1 (0-0.25')

Lab Sample ID: 880-66088-1

Date Collected: 12/12/25 00:00

Matrix: Solid

Date Received: 12/12/25 13:26

Method: SW846 8021B - Volatile Organic Compounds (GC)

Analyte	Result	Qualifier	RL	MDL	Unit	D	Prepared	Analyzed	Dil Fac
Benzene	<0.00199	U	0.00199		mg/Kg		12/18/25 10:14	12/18/25 17:03	1
Toluene	<0.00199	U	0.00199		mg/Kg		12/18/25 10:14	12/18/25 17:03	1
Ethylbenzene	<0.00199	U	0.00199		mg/Kg		12/18/25 10:14	12/18/25 17:03	1
m-Xylene & p-Xylene	<0.00398	U	0.00398		mg/Kg		12/18/25 10:14	12/18/25 17:03	1
o-Xylene	<0.00199	U *	0.00199		mg/Kg		12/18/25 10:14	12/18/25 17:03	1
Xylenes, Total	<0.00398	U	0.00398		mg/Kg		12/18/25 10:14	12/18/25 17:03	1

Surrogate	%Recovery	Qualifier	Limits	Prepared	Analyzed	Dil Fac
4-Bromofluorobenzene (Surr)	299	S1+	70 - 130	12/18/25 10:14	12/18/25 17:03	1
1,4-Difluorobenzene (Surr)	80		70 - 130	12/18/25 10:14	12/18/25 17:03	1

Method: TAL SOP Total BTEX - Total BTEX Calculation

Analyte	Result	Qualifier	RL	MDL	Unit	D	Prepared	Analyzed	Dil Fac
Total BTEX	<0.00398	U	0.00398		mg/Kg			12/18/25 17:03	1

Method: SW846 8015 NM - Diesel Range Organics (DRO) (GC)

Analyte	Result	Qualifier	RL	MDL	Unit	D	Prepared	Analyzed	Dil Fac
Total TPH	85.7		50.0		mg/Kg			12/20/25 16:38	1

Method: SW846 8015B NM - Diesel Range Organics (DRO) (GC)

Analyte	Result	Qualifier	RL	MDL	Unit	D	Prepared	Analyzed	Dil Fac
Gasoline Range Organics (GRO)-C6-C10	<50.0	U	50.0		mg/Kg		12/12/25 15:34	12/20/25 16:38	1
Diesel Range Organics (Over C10-C28)	85.7		50.0		mg/Kg		12/12/25 15:34	12/20/25 16:38	1
Oil Range Organics (Over C28-C36)	<50.0	U	50.0		mg/Kg		12/12/25 15:34	12/20/25 16:38	1

Surrogate	%Recovery	Qualifier	Limits	Prepared	Analyzed	Dil Fac
1-Chlorooctane (Surr)	126		70 - 130	12/12/25 15:34	12/20/25 16:38	1
o-Terphenyl (Surr)	113		70 - 130	12/12/25 15:34	12/20/25 16:38	1

Method: EPA 300.0 - Anions, Ion Chromatography - Soluble

Analyte	Result	Qualifier	RL	MDL	Unit	D	Prepared	Analyzed	Dil Fac
Chloride	343		10.0		mg/Kg			12/16/25 16:44	1

Client Sample ID: CS -2 (0-0.25')

Lab Sample ID: 880-66088-2

Date Collected: 12/12/25 00:00

Matrix: Solid

Date Received: 12/12/25 13:26

Method: SW846 8021B - Volatile Organic Compounds (GC)

Analyte	Result	Qualifier	RL	MDL	Unit	D	Prepared	Analyzed	Dil Fac
Benzene	<0.00200	U	0.00200		mg/Kg		12/18/25 10:14	12/18/25 17:24	1
Toluene	<0.00200	U	0.00200		mg/Kg		12/18/25 10:14	12/18/25 17:24	1
Ethylbenzene	<0.00200	U	0.00200		mg/Kg		12/18/25 10:14	12/18/25 17:24	1
m-Xylene & p-Xylene	<0.00399	U	0.00399		mg/Kg		12/18/25 10:14	12/18/25 17:24	1
o-Xylene	<0.00200	U *	0.00200		mg/Kg		12/18/25 10:14	12/18/25 17:24	1
Xylenes, Total	<0.00399	U	0.00399		mg/Kg		12/18/25 10:14	12/18/25 17:24	1

Surrogate	%Recovery	Qualifier	Limits	Prepared	Analyzed	Dil Fac
4-Bromofluorobenzene (Surr)	292	S1+	70 - 130	12/18/25 10:14	12/18/25 17:24	1
1,4-Difluorobenzene (Surr)	78		70 - 130	12/18/25 10:14	12/18/25 17:24	1

Eurofins Midland

Client Sample Results

Client: Carmona Resources
Project/Site: Lea Unit West Flare (12.03.2025)

Job ID: 880-66088-1
SDG: Lea County New Mexico

Client Sample ID: CS -2 (0-0.25')

Lab Sample ID: 880-66088-2

Date Collected: 12/12/25 00:00

Matrix: Solid

Date Received: 12/12/25 13:26

Method: TAL SOP Total BTEX - Total BTEX Calculation

Analyte	Result	Qualifier	RL	MDL	Unit	D	Prepared	Analyzed	Dil Fac
Total BTEX	<0.00399	U	0.00399		mg/Kg			12/18/25 17:24	1

Method: SW846 8015 NM - Diesel Range Organics (DRO) (GC)

Analyte	Result	Qualifier	RL	MDL	Unit	D	Prepared	Analyzed	Dil Fac
Total TPH	<50.5	U	50.5		mg/Kg			12/20/25 16:53	1

Method: SW846 8015B NM - Diesel Range Organics (DRO) (GC)

Analyte	Result	Qualifier	RL	MDL	Unit	D	Prepared	Analyzed	Dil Fac
Gasoline Range Organics (GRO)-C6-C10	<50.5	U	50.5		mg/Kg		12/12/25 15:34	12/20/25 16:53	1
Diesel Range Organics (Over C10-C28)	<50.5	U	50.5		mg/Kg		12/12/25 15:34	12/20/25 16:53	1
Oil Range Organics (Over C28-C36)	<50.5	U	50.5		mg/Kg		12/12/25 15:34	12/20/25 16:53	1
Surrogate	%Recovery	Qualifier	Limits				Prepared	Analyzed	Dil Fac
1-Chlorooctane (Surr)	121		70 - 130				12/12/25 15:34	12/20/25 16:53	1
o-Terphenyl (Surr)	113		70 - 130				12/12/25 15:34	12/20/25 16:53	1

Method: EPA 300.0 - Anions, Ion Chromatography - Soluble

Analyte	Result	Qualifier	RL	MDL	Unit	D	Prepared	Analyzed	Dil Fac
Chloride	182		10.0		mg/Kg			12/16/25 17:00	1

Client Sample ID: CS -3 (0-0.25')

Lab Sample ID: 880-66088-3

Date Collected: 12/12/25 00:00

Matrix: Solid

Date Received: 12/12/25 13:26

Method: SW846 8021B - Volatile Organic Compounds (GC)

Analyte	Result	Qualifier	RL	MDL	Unit	D	Prepared	Analyzed	Dil Fac
Benzene	<0.00201	U	0.00201		mg/Kg		12/18/25 10:14	12/18/25 17:44	1
Toluene	<0.00201	U	0.00201		mg/Kg		12/18/25 10:14	12/18/25 17:44	1
Ethylbenzene	<0.00201	U	0.00201		mg/Kg		12/18/25 10:14	12/18/25 17:44	1
m-Xylene & p-Xylene	<0.00402	U	0.00402		mg/Kg		12/18/25 10:14	12/18/25 17:44	1
o-Xylene	<0.00201	U **	0.00201		mg/Kg		12/18/25 10:14	12/18/25 17:44	1
Xylenes, Total	<0.00402	U	0.00402		mg/Kg		12/18/25 10:14	12/18/25 17:44	1
Surrogate	%Recovery	Qualifier	Limits				Prepared	Analyzed	Dil Fac
4-Bromofluorobenzene (Surr)	302	S1+	70 - 130				12/18/25 10:14	12/18/25 17:44	1
1,4-Difluorobenzene (Surr)	84		70 - 130				12/18/25 10:14	12/18/25 17:44	1

Method: TAL SOP Total BTEX - Total BTEX Calculation

Analyte	Result	Qualifier	RL	MDL	Unit	D	Prepared	Analyzed	Dil Fac
Total BTEX	<0.00402	U	0.00402		mg/Kg			12/18/25 17:44	1

Method: SW846 8015 NM - Diesel Range Organics (DRO) (GC)

Analyte	Result	Qualifier	RL	MDL	Unit	D	Prepared	Analyzed	Dil Fac
Total TPH	<50.0	U	50.0		mg/Kg			12/20/25 17:09	1

Method: SW846 8015B NM - Diesel Range Organics (DRO) (GC)

Analyte	Result	Qualifier	RL	MDL	Unit	D	Prepared	Analyzed	Dil Fac
Gasoline Range Organics (GRO)-C6-C10	<50.0	U	50.0		mg/Kg		12/12/25 15:34	12/20/25 17:09	1
Diesel Range Organics (Over C10-C28)	<50.0	U	50.0		mg/Kg		12/12/25 15:34	12/20/25 17:09	1

Eurofins Midland

Client Sample Results

Client: Carmona Resources
Project/Site: Lea Unit West Flare (12.03.2025)

Job ID: 880-66088-1
SDG: Lea County New Mexico

Client Sample ID: CS -3 (0-0.25')

Lab Sample ID: 880-66088-3

Date Collected: 12/12/25 00:00

Matrix: Solid

Date Received: 12/12/25 13:26

Method: SW846 8015B NM - Diesel Range Organics (DRO) (GC) (Continued)

Analyte	Result	Qualifier	RL	MDL	Unit	D	Prepared	Analyzed	Dil Fac
Oil Range Organics (Over C28-C36)	<50.0	U	50.0		mg/Kg		12/12/25 15:34	12/20/25 17:09	1
Surrogate	%Recovery	Qualifier	Limits				Prepared	Analyzed	Dil Fac
1-Chlorooctane (Surr)	119		70 - 130				12/12/25 15:34	12/20/25 17:09	1
o-Terphenyl (Surr)	109		70 - 130				12/12/25 15:34	12/20/25 17:09	1

Method: EPA 300.0 - Anions, Ion Chromatography - Soluble

Analyte	Result	Qualifier	RL	MDL	Unit	D	Prepared	Analyzed	Dil Fac
Chloride	192		10.1		mg/Kg			12/16/25 17:06	1

Client Sample ID: CS -4 (0-0.25')

Lab Sample ID: 880-66088-4

Date Collected: 12/12/25 00:00

Matrix: Solid

Date Received: 12/12/25 13:26

Method: SW846 8021B - Volatile Organic Compounds (GC)

Analyte	Result	Qualifier	RL	MDL	Unit	D	Prepared	Analyzed	Dil Fac
Benzene	<0.00199	U	0.00199		mg/Kg		12/18/25 10:14	12/18/25 18:04	1
Toluene	<0.00199	U	0.00199		mg/Kg		12/18/25 10:14	12/18/25 18:04	1
Ethylbenzene	<0.00199	U	0.00199		mg/Kg		12/18/25 10:14	12/18/25 18:04	1
m-Xylene & p-Xylene	<0.00398	U	0.00398		mg/Kg		12/18/25 10:14	12/18/25 18:04	1
o-Xylene	<0.00199	U *	0.00199		mg/Kg		12/18/25 10:14	12/18/25 18:04	1
Xylenes, Total	<0.00398	U	0.00398		mg/Kg		12/18/25 10:14	12/18/25 18:04	1
Surrogate	%Recovery	Qualifier	Limits				Prepared	Analyzed	Dil Fac
4-Bromofluorobenzene (Surr)	350	S1+	70 - 130				12/18/25 10:14	12/18/25 18:04	1
1,4-Difluorobenzene (Surr)	100		70 - 130				12/18/25 10:14	12/18/25 18:04	1

Method: TAL SOP Total BTEX - Total BTEX Calculation

Analyte	Result	Qualifier	RL	MDL	Unit	D	Prepared	Analyzed	Dil Fac
Total BTEX	<0.00398	U	0.00398		mg/Kg			12/18/25 18:04	1

Method: SW846 8015 NM - Diesel Range Organics (DRO) (GC)

Analyte	Result	Qualifier	RL	MDL	Unit	D	Prepared	Analyzed	Dil Fac
Total TPH	<49.8	U	49.8		mg/Kg			12/20/25 17:23	1

Method: SW846 8015B NM - Diesel Range Organics (DRO) (GC)

Analyte	Result	Qualifier	RL	MDL	Unit	D	Prepared	Analyzed	Dil Fac
Gasoline Range Organics (GRO)-C6-C10	<49.8	U	49.8		mg/Kg		12/12/25 15:34	12/20/25 17:23	1
Diesel Range Organics (Over C10-C28)	<49.8	U	49.8		mg/Kg		12/12/25 15:34	12/20/25 17:23	1
Oil Range Organics (Over C28-C36)	<49.8	U	49.8		mg/Kg		12/12/25 15:34	12/20/25 17:23	1
Surrogate	%Recovery	Qualifier	Limits				Prepared	Analyzed	Dil Fac
1-Chlorooctane (Surr)	124		70 - 130				12/12/25 15:34	12/20/25 17:23	1
o-Terphenyl (Surr)	114		70 - 130				12/12/25 15:34	12/20/25 17:23	1

Method: EPA 300.0 - Anions, Ion Chromatography - Soluble

Analyte	Result	Qualifier	RL	MDL	Unit	D	Prepared	Analyzed	Dil Fac
Chloride	64.0		9.92		mg/Kg			12/16/25 17:22	1

Eurofins Midland

Surrogate Summary

Client: Carmona Resources
Project/Site: Lea Unit West Flare (12.03.2025)

Job ID: 880-66088-1
SDG: Lea County New Mexico

Method: 8021B - Volatile Organic Compounds (GC)

Matrix: Solid

Prep Type: Total/NA

		Percent Surrogate Recovery (Acceptance Limits)	
Lab Sample ID	Client Sample ID	BFB1 (70-130)	DFBZ1 (70-130)
880-66088-1	CS -1 (0-0.25')	299 S1+	80
880-66088-2	CS -2 (0-0.25')	292 S1+	78
880-66088-3	CS -3 (0-0.25')	302 S1+	84
880-66088-4	CS -4 (0-0.25')	350 S1+	100
890-9241-A-8-C MS	Matrix Spike	222 S1+	90
890-9241-A-8-D MSD	Matrix Spike Duplicate	207 S1+	75
LCS 880-127065/1-A	Lab Control Sample	232 S1+	81
LCSD 880-127065/2-A	Lab Control Sample Dup	253 S1+	77
MB 880-127065/5-A	Method Blank	292 S1+	76
Surrogate Legend			
BFB = 4-Bromofluorobenzene (Surr)			
DFBZ = 1,4-Difluorobenzene (Surr)			

Method: 8015B NM - Diesel Range Organics (DRO) (GC)

Matrix: Solid

Prep Type: Total/NA

		Percent Surrogate Recovery (Acceptance Limits)	
Lab Sample ID	Client Sample ID	1CO1 (70-130)	OTPH1 (70-130)
880-66087-A-23-B MS	Matrix Spike	145 S1+	115
880-66087-A-23-C MSD	Matrix Spike Duplicate	118	117
880-66088-1	CS -1 (0-0.25')	126	113
880-66088-2	CS -2 (0-0.25')	121	113
880-66088-3	CS -3 (0-0.25')	119	109
880-66088-4	CS -4 (0-0.25')	124	114
LCS 880-126560/2-A	Lab Control Sample	116	119
LCSD 880-126560/3-A	Lab Control Sample Dup	101	101
MB 880-126560/1-A	Method Blank	130	115
Surrogate Legend			
1CO = 1-Chlorooctane (Surr)			
OTPH = o-Terphenyl (Surr)			

QC Sample Results

Client: Carmona Resources
Project/Site: Lea Unit West Flare (12.03.2025)

Job ID: 880-66088-1
SDG: Lea County New Mexico

Method: 8021B - Volatile Organic Compounds (GC)

Lab Sample ID: MB 880-127065/5-A

Matrix: Solid

Analysis Batch: 127051

Client Sample ID: Method Blank

Prep Type: Total/NA

Prep Batch: 127065

Analyte	MB Result	MB Qualifier	RL	MDL	Unit	D	Prepared	Analyzed	Dil Fac
Benzene	<0.00200	U	0.00200		mg/Kg		12/18/25 10:14	12/18/25 11:23	1
Toluene	<0.00200	U	0.00200		mg/Kg		12/18/25 10:14	12/18/25 11:23	1
Ethylbenzene	<0.00200	U	0.00200		mg/Kg		12/18/25 10:14	12/18/25 11:23	1
m-Xylene & p-Xylene	<0.00400	U	0.00400		mg/Kg		12/18/25 10:14	12/18/25 11:23	1
o-Xylene	<0.00200	U	0.00200		mg/Kg		12/18/25 10:14	12/18/25 11:23	1
Xylenes, Total	<0.00400	U	0.00400		mg/Kg		12/18/25 10:14	12/18/25 11:23	1

Surrogate	MB %Recovery	MB Qualifier	Limits	Prepared	Analyzed	Dil Fac
4-Bromofluorobenzene (Surr)	292	S1+	70 - 130	12/18/25 10:14	12/18/25 11:23	1
1,4-Difluorobenzene (Surr)	76		70 - 130	12/18/25 10:14	12/18/25 11:23	1

Lab Sample ID: LCS 880-127065/1-A

Matrix: Solid

Analysis Batch: 127051

Client Sample ID: Lab Control Sample

Prep Type: Total/NA

Prep Batch: 127065

Analyte	Spike Added	LCS Result	LCS Qualifier	Unit	D	%Rec	%Rec Limits
Benzene	0.100	0.1002		mg/Kg		100	70 - 130
Toluene	0.100	0.1108		mg/Kg		111	70 - 130
Ethylbenzene	0.100	0.1085		mg/Kg		108	70 - 130
m-Xylene & p-Xylene	0.200	0.2259		mg/Kg		113	70 - 130
o-Xylene	0.100	0.1163		mg/Kg		116	70 - 130

Surrogate	LCS %Recovery	LCS Qualifier	Limits
4-Bromofluorobenzene (Surr)	232	S1+	70 - 130
1,4-Difluorobenzene (Surr)	81		70 - 130

Lab Sample ID: LCSD 880-127065/2-A

Matrix: Solid

Analysis Batch: 127051

Client Sample ID: Lab Control Sample Dup

Prep Type: Total/NA

Prep Batch: 127065

Analyte	Spike Added	LCSD Result	LCSD Qualifier	Unit	D	%Rec	%Rec Limits	RPD	RPD Limit
Benzene	0.100	0.1118		mg/Kg		112	70 - 130	11	35
Toluene	0.100	0.1247		mg/Kg		125	70 - 130	12	35
Ethylbenzene	0.100	0.1237		mg/Kg		124	70 - 130	13	35
m-Xylene & p-Xylene	0.200	0.2565		mg/Kg		128	70 - 130	13	35
o-Xylene	0.100	0.1321	*+	mg/Kg		132	70 - 130	13	35

Surrogate	LCSD %Recovery	LCSD Qualifier	Limits
4-Bromofluorobenzene (Surr)	253	S1+	70 - 130
1,4-Difluorobenzene (Surr)	77		70 - 130

Lab Sample ID: 890-9241-A-8-C MS

Matrix: Solid

Analysis Batch: 127051

Client Sample ID: Matrix Spike

Prep Type: Total/NA

Prep Batch: 127065

Analyte	Sample Result	Sample Qualifier	Spike Added	MS Result	MS Qualifier	Unit	D	%Rec	%Rec Limits
Benzene	<0.00109	U	0.100	0.1068		mg/Kg		107	70 - 130
Toluene	<0.00109	U	0.100	0.1124		mg/Kg		112	70 - 130

Eurofins Midland

QC Sample Results

Client: Carmona Resources
Project/Site: Lea Unit West Flare (12.03.2025)

Job ID: 880-66088-1
SDG: Lea County New Mexico

Method: 8021B - Volatile Organic Compounds (GC) (Continued)

Lab Sample ID: 890-9241-A-8-C MS

Matrix: Solid

Analysis Batch: 127051

Client Sample ID: Matrix Spike

Prep Type: Total/NA

Prep Batch: 127065

Analyte	Sample Result	Sample Qualifier	Spike Added	MS Result	MS Qualifier	Unit	D	%Rec	%Rec Limits
Ethylbenzene	<0.00109	U	0.100	0.1105		mg/Kg		111	70 - 130
m-Xylene & p-Xylene	<0.00219	U	0.200	0.2322		mg/Kg		116	70 - 130
o-Xylene	<0.00109	U *	0.100	0.1170		mg/Kg		117	70 - 130
Surrogate	MS %Recovery	MS Qualifier	MS Limits						
4-Bromofluorobenzene (Surr)	222	S1+	70 - 130						
1,4-Difluorobenzene (Surr)	90		70 - 130						

Lab Sample ID: 890-9241-A-8-D MSD

Matrix: Solid

Analysis Batch: 127051

Client Sample ID: Matrix Spike Duplicate

Prep Type: Total/NA

Prep Batch: 127065

Analyte	Sample Result	Sample Qualifier	Spike Added	MSD Result	MSD Qualifier	Unit	D	%Rec	%Rec Limits	RPD	RPD Limit
Benzene	<0.00109	U	0.100	0.1073		mg/Kg		107	70 - 130	0	35
Toluene	<0.00109	U	0.100	0.1100		mg/Kg		110	70 - 130	2	35
Ethylbenzene	<0.00109	U	0.100	0.1080		mg/Kg		108	70 - 130	2	35
m-Xylene & p-Xylene	<0.00219	U	0.200	0.2260		mg/Kg		113	70 - 130	3	35
o-Xylene	<0.00109	U *	0.100	0.1133		mg/Kg		113	70 - 130	3	35
Surrogate	MSD %Recovery	MSD Qualifier	MSD Limits								
4-Bromofluorobenzene (Surr)	207	S1+	70 - 130								
1,4-Difluorobenzene (Surr)	75		70 - 130								

Method: 8015B NM - Diesel Range Organics (DRO) (GC)

Lab Sample ID: MB 880-126560/1-A

Matrix: Solid

Analysis Batch: 127326

Client Sample ID: Method Blank

Prep Type: Total/NA

Prep Batch: 126560

Analyte	MB Result	MB Qualifier	RL	MDL	Unit	D	Prepared	Analyzed	Dil Fac
Gasoline Range Organics (GRO)-C6-C10	<50.0	U	50.0		mg/Kg		12/12/25 15:33	12/20/25 08:31	1
Diesel Range Organics (Over C10-C28)	<50.0	U	50.0		mg/Kg		12/12/25 15:33	12/20/25 08:31	1
Oil Range Organics (Over C28-C36)	<50.0	U	50.0		mg/Kg		12/12/25 15:33	12/20/25 08:31	1
Surrogate	MB %Recovery	MB Qualifier	MB Limits				Prepared	Analyzed	Dil Fac
1-Chlorooctane (Surr)	130		70 - 130				12/12/25 15:33	12/20/25 08:31	1
o-Terphenyl (Surr)	115		70 - 130				12/12/25 15:33	12/20/25 08:31	1

Lab Sample ID: LCS 880-126560/2-A

Matrix: Solid

Analysis Batch: 127326

Client Sample ID: Lab Control Sample

Prep Type: Total/NA

Prep Batch: 126560

Analyte	Spike Added	LCS Result	LCS Qualifier	Unit	D	%Rec	%Rec Limits
Gasoline Range Organics (GRO)-C6-C10	1000	1248		mg/Kg		125	70 - 130
Diesel Range Organics (Over C10-C28)	1000	1290		mg/Kg		129	70 - 130

Eurofins Midland

QC Sample Results

Client: Carmona Resources
Project/Site: Lea Unit West Flare (12.03.2025)

Job ID: 880-66088-1
SDG: Lea County New Mexico

Method: 8015B NM - Diesel Range Organics (DRO) (GC) (Continued)

Lab Sample ID: LCS 880-126560/2-A

Matrix: Solid

Analysis Batch: 127326

Client Sample ID: Lab Control Sample

Prep Type: Total/NA

Prep Batch: 126560

	LCS	LCS	
Surrogate	%Recovery	Qualifier	Limits
1-Chlorooctane (Surr)	116		70 - 130
o-Terphenyl (Surr)	119		70 - 130

Lab Sample ID: LCSD 880-126560/3-A

Matrix: Solid

Analysis Batch: 127326

Client Sample ID: Lab Control Sample Dup

Prep Type: Total/NA

Prep Batch: 126560

Analyte	Spike Added	LCSD Result	LCSD Qualifier	Unit	D	%Rec	%Rec Limits	RPD	RPD Limit
Gasoline Range Organics (GRO)-C6-C10	1000	1094		mg/Kg		109	70 - 130	13	20
Diesel Range Organics (Over C10-C28)	1000	1129		mg/Kg		113	70 - 130	13	20

	LCSD	LCSD	
Surrogate	%Recovery	Qualifier	Limits
1-Chlorooctane (Surr)	101		70 - 130
o-Terphenyl (Surr)	101		70 - 130

Lab Sample ID: 880-66087-A-23-B MS

Matrix: Solid

Analysis Batch: 127326

Client Sample ID: Matrix Spike

Prep Type: Total/NA

Prep Batch: 126560

Analyte	Sample Result	Sample Qualifier	Spike Added	MS Result	MS Qualifier	Unit	D	%Rec	%Rec Limits
Gasoline Range Organics (GRO)-C6-C10	<50.4	U	991	953.9		mg/Kg		96	70 - 130
Diesel Range Organics (Over C10-C28)	<50.4	U	991	924.0		mg/Kg		93	70 - 130

	MS	MS	
Surrogate	%Recovery	Qualifier	Limits
1-Chlorooctane (Surr)	145	S1+	70 - 130
o-Terphenyl (Surr)	115		70 - 130

Lab Sample ID: 880-66087-A-23-C MSD

Matrix: Solid

Analysis Batch: 127326

Client Sample ID: Matrix Spike Duplicate

Prep Type: Total/NA

Prep Batch: 126560

Analyte	Sample Result	Sample Qualifier	Spike Added	MSD Result	MSD Qualifier	Unit	D	%Rec	%Rec Limits	RPD	RPD Limit
Gasoline Range Organics (GRO)-C6-C10	<50.4	U	991	949.2		mg/Kg		96	70 - 130	0	20
Diesel Range Organics (Over C10-C28)	<50.4	U	991	992.6		mg/Kg		100	70 - 130	7	20

	MSD	MSD	
Surrogate	%Recovery	Qualifier	Limits
1-Chlorooctane (Surr)	118		70 - 130
o-Terphenyl (Surr)	117		70 - 130

Eurofins Midland

QC Sample Results

Client: Carmona Resources
Project/Site: Lea Unit West Flare (12.03.2025)

Job ID: 880-66088-1
SDG: Lea County New Mexico

Method: 300.0 - Anions, Ion Chromatography

Lab Sample ID: MB 880-126807/1-A
Matrix: Solid
Analysis Batch: 126831

Client Sample ID: Method Blank
Prep Type: Soluble

Analyte	MB Result	MB Qualifier	RL	MDL	Unit	D	Prepared	Analyzed	Dil Fac
Chloride	<10.0	U	10.0		mg/Kg			12/16/25 15:14	1

Lab Sample ID: LCS 880-126807/2-A
Matrix: Solid
Analysis Batch: 126831

Client Sample ID: Lab Control Sample
Prep Type: Soluble

Analyte	Spike Added	LCS Result	LCS Qualifier	Unit	D	%Rec	%Rec Limits
Chloride	250	235.3		mg/Kg		94	90 - 110

Lab Sample ID: LCSD 880-126807/3-A
Matrix: Solid
Analysis Batch: 126831

Client Sample ID: Lab Control Sample Dup
Prep Type: Soluble

Analyte	Spike Added	LCSD Result	LCSD Qualifier	Unit	D	%Rec	%Rec Limits	RPD	RPD Limit
Chloride	250	234.9		mg/Kg		94	90 - 110	0	20

Lab Sample ID: 880-66088-1 MS
Matrix: Solid
Analysis Batch: 126831

Client Sample ID: CS -1 (0-0.25')
Prep Type: Soluble

Analyte	Sample Result	Sample Qualifier	Spike Added	MS Result	MS Qualifier	Unit	D	%Rec	%Rec Limits
Chloride	343		251	599.2		mg/Kg		102	90 - 110

Lab Sample ID: 880-66088-1 MSD
Matrix: Solid
Analysis Batch: 126831

Client Sample ID: CS -1 (0-0.25')
Prep Type: Soluble

Analyte	Sample Result	Sample Qualifier	Spike Added	MSD Result	MSD Qualifier	Unit	D	%Rec	%Rec Limits	RPD	RPD Limit
Chloride	343		251	596.4		mg/Kg		101	90 - 110	0	20

QC Association Summary

Client: Carmona Resources
Project/Site: Lea Unit West Flare (12.03.2025)

Job ID: 880-66088-1
SDG: Lea County New Mexico

GC VOA

Analysis Batch: 127051

Lab Sample ID	Client Sample ID	Prep Type	Matrix	Method	Prep Batch
880-66088-1	CS -1 (0-0.25')	Total/NA	Solid	8021B	127065
880-66088-2	CS -2 (0-0.25')	Total/NA	Solid	8021B	127065
880-66088-3	CS -3 (0-0.25')	Total/NA	Solid	8021B	127065
880-66088-4	CS -4 (0-0.25')	Total/NA	Solid	8021B	127065
MB 880-127065/5-A	Method Blank	Total/NA	Solid	8021B	127065
LCS 880-127065/1-A	Lab Control Sample	Total/NA	Solid	8021B	127065
LCSD 880-127065/2-A	Lab Control Sample Dup	Total/NA	Solid	8021B	127065
890-9241-A-8-C MS	Matrix Spike	Total/NA	Solid	8021B	127065
890-9241-A-8-D MSD	Matrix Spike Duplicate	Total/NA	Solid	8021B	127065

Prep Batch: 127065

Lab Sample ID	Client Sample ID	Prep Type	Matrix	Method	Prep Batch
880-66088-1	CS -1 (0-0.25')	Total/NA	Solid	5035	
880-66088-2	CS -2 (0-0.25')	Total/NA	Solid	5035	
880-66088-3	CS -3 (0-0.25')	Total/NA	Solid	5035	
880-66088-4	CS -4 (0-0.25')	Total/NA	Solid	5035	
MB 880-127065/5-A	Method Blank	Total/NA	Solid	5035	
LCS 880-127065/1-A	Lab Control Sample	Total/NA	Solid	5035	
LCSD 880-127065/2-A	Lab Control Sample Dup	Total/NA	Solid	5035	
890-9241-A-8-C MS	Matrix Spike	Total/NA	Solid	5035	
890-9241-A-8-D MSD	Matrix Spike Duplicate	Total/NA	Solid	5035	

Analysis Batch: 127294

Lab Sample ID	Client Sample ID	Prep Type	Matrix	Method	Prep Batch
880-66088-1	CS -1 (0-0.25')	Total/NA	Solid	Total BTEX	
880-66088-2	CS -2 (0-0.25')	Total/NA	Solid	Total BTEX	
880-66088-3	CS -3 (0-0.25')	Total/NA	Solid	Total BTEX	
880-66088-4	CS -4 (0-0.25')	Total/NA	Solid	Total BTEX	

GC Semi VOA

Prep Batch: 126560

Lab Sample ID	Client Sample ID	Prep Type	Matrix	Method	Prep Batch
880-66088-1	CS -1 (0-0.25')	Total/NA	Solid	8015NM Prep	
880-66088-2	CS -2 (0-0.25')	Total/NA	Solid	8015NM Prep	
880-66088-3	CS -3 (0-0.25')	Total/NA	Solid	8015NM Prep	
880-66088-4	CS -4 (0-0.25')	Total/NA	Solid	8015NM Prep	
MB 880-126560/1-A	Method Blank	Total/NA	Solid	8015NM Prep	
LCS 880-126560/2-A	Lab Control Sample	Total/NA	Solid	8015NM Prep	
LCSD 880-126560/3-A	Lab Control Sample Dup	Total/NA	Solid	8015NM Prep	
880-66087-A-23-B MS	Matrix Spike	Total/NA	Solid	8015NM Prep	
880-66087-A-23-C MSD	Matrix Spike Duplicate	Total/NA	Solid	8015NM Prep	

Analysis Batch: 127326

Lab Sample ID	Client Sample ID	Prep Type	Matrix	Method	Prep Batch
880-66088-1	CS -1 (0-0.25')	Total/NA	Solid	8015B NM	126560
880-66088-2	CS -2 (0-0.25')	Total/NA	Solid	8015B NM	126560
880-66088-3	CS -3 (0-0.25')	Total/NA	Solid	8015B NM	126560
880-66088-4	CS -4 (0-0.25')	Total/NA	Solid	8015B NM	126560
MB 880-126560/1-A	Method Blank	Total/NA	Solid	8015B NM	126560
LCS 880-126560/2-A	Lab Control Sample	Total/NA	Solid	8015B NM	126560

Eurofins Midland

QC Association Summary

Client: Carmona Resources
Project/Site: Lea Unit West Flare (12.03.2025)

Job ID: 880-66088-1
SDG: Lea County New Mexico

GC Semi VOA (Continued)

Analysis Batch: 127326 (Continued)

Lab Sample ID	Client Sample ID	Prep Type	Matrix	Method	Prep Batch
LCSD 880-126560/3-A	Lab Control Sample Dup	Total/NA	Solid	8015B NM	126560
880-66087-A-23-B MS	Matrix Spike	Total/NA	Solid	8015B NM	126560
880-66087-A-23-C MSD	Matrix Spike Duplicate	Total/NA	Solid	8015B NM	126560

Analysis Batch: 127456

Lab Sample ID	Client Sample ID	Prep Type	Matrix	Method	Prep Batch
880-66088-1	CS -1 (0-0.25')	Total/NA	Solid	8015 NM	
880-66088-2	CS -2 (0-0.25')	Total/NA	Solid	8015 NM	
880-66088-3	CS -3 (0-0.25')	Total/NA	Solid	8015 NM	
880-66088-4	CS -4 (0-0.25')	Total/NA	Solid	8015 NM	

HPLC/IC

Leach Batch: 126807

Lab Sample ID	Client Sample ID	Prep Type	Matrix	Method	Prep Batch
880-66088-1	CS -1 (0-0.25')	Soluble	Solid	DI Leach	
880-66088-2	CS -2 (0-0.25')	Soluble	Solid	DI Leach	
880-66088-3	CS -3 (0-0.25')	Soluble	Solid	DI Leach	
880-66088-4	CS -4 (0-0.25')	Soluble	Solid	DI Leach	
MB 880-126807/1-A	Method Blank	Soluble	Solid	DI Leach	
LCS 880-126807/2-A	Lab Control Sample	Soluble	Solid	DI Leach	
LCSD 880-126807/3-A	Lab Control Sample Dup	Soluble	Solid	DI Leach	
880-66088-1 MS	CS -1 (0-0.25')	Soluble	Solid	DI Leach	
880-66088-1 MSD	CS -1 (0-0.25')	Soluble	Solid	DI Leach	

Analysis Batch: 126831

Lab Sample ID	Client Sample ID	Prep Type	Matrix	Method	Prep Batch
880-66088-1	CS -1 (0-0.25')	Soluble	Solid	300.0	126807
880-66088-2	CS -2 (0-0.25')	Soluble	Solid	300.0	126807
880-66088-3	CS -3 (0-0.25')	Soluble	Solid	300.0	126807
880-66088-4	CS -4 (0-0.25')	Soluble	Solid	300.0	126807
MB 880-126807/1-A	Method Blank	Soluble	Solid	300.0	126807
LCS 880-126807/2-A	Lab Control Sample	Soluble	Solid	300.0	126807
LCSD 880-126807/3-A	Lab Control Sample Dup	Soluble	Solid	300.0	126807
880-66088-1 MS	CS -1 (0-0.25')	Soluble	Solid	300.0	126807
880-66088-1 MSD	CS -1 (0-0.25')	Soluble	Solid	300.0	126807

Lab Chronicle

Client: Carmona Resources
Project/Site: Lea Unit West Flare (12.03.2025)

Job ID: 880-66088-1
SDG: Lea County New Mexico

Client Sample ID: CS -1 (0-0.25')
Date Collected: 12/12/25 00:00
Date Received: 12/12/25 13:26

Lab Sample ID: 880-66088-1
Matrix: Solid

Prep Type	Batch Type	Batch Method	Run	Dil Factor	Initial Amount	Final Amount	Batch Number	Prepared or Analyzed	Analyst	Lab
Total/NA	Prep	5035			5.03 g	5 mL	127065	12/18/25 10:14	MNR	EET MID
Total/NA	Analysis	8021B		1	5 mL	5 mL	127051	12/18/25 17:03	MNR	EET MID
Total/NA	Analysis	Total BTEX		1			127294	12/18/25 17:03	SA	EET MID
Total/NA	Analysis	8015 NM		1			127456	12/20/25 16:38	SA	EET MID
Total/NA	Prep	8015NM Prep			10.01 g	10.00 mL	126560	12/12/25 15:34	EL	EET MID
Total/NA	Analysis	8015B NM		1	1 uL	1 uL	127326	12/20/25 16:38	FC	EET MID
Soluble	Leach	DI Leach			4.98 g	50 mL	126807	12/16/25 09:32	SA	EET MID
Soluble	Analysis	300.0		1			126831	12/16/25 16:44	CS	EET MID

Client Sample ID: CS -2 (0-0.25')
Date Collected: 12/12/25 00:00
Date Received: 12/12/25 13:26

Lab Sample ID: 880-66088-2
Matrix: Solid

Prep Type	Batch Type	Batch Method	Run	Dil Factor	Initial Amount	Final Amount	Batch Number	Prepared or Analyzed	Analyst	Lab
Total/NA	Prep	5035			5.01 g	5 mL	127065	12/18/25 10:14	MNR	EET MID
Total/NA	Analysis	8021B		1	5 mL	5 mL	127051	12/18/25 17:24	MNR	EET MID
Total/NA	Analysis	Total BTEX		1			127294	12/18/25 17:24	SA	EET MID
Total/NA	Analysis	8015 NM		1			127456	12/20/25 16:53	SA	EET MID
Total/NA	Prep	8015NM Prep			9.91 g	10.00 mL	126560	12/12/25 15:34	EL	EET MID
Total/NA	Analysis	8015B NM		1	1 uL	1 uL	127326	12/20/25 16:53	FC	EET MID
Soluble	Leach	DI Leach			4.98 g	50 mL	126807	12/16/25 09:32	SA	EET MID
Soluble	Analysis	300.0		1			126831	12/16/25 17:00	CS	EET MID

Client Sample ID: CS -3 (0-0.25')
Date Collected: 12/12/25 00:00
Date Received: 12/12/25 13:26

Lab Sample ID: 880-66088-3
Matrix: Solid

Prep Type	Batch Type	Batch Method	Run	Dil Factor	Initial Amount	Final Amount	Batch Number	Prepared or Analyzed	Analyst	Lab
Total/NA	Prep	5035			4.98 g	5 mL	127065	12/18/25 10:14	MNR	EET MID
Total/NA	Analysis	8021B		1	5 mL	5 mL	127051	12/18/25 17:44	MNR	EET MID
Total/NA	Analysis	Total BTEX		1			127294	12/18/25 17:44	SA	EET MID
Total/NA	Analysis	8015 NM		1			127456	12/20/25 17:09	SA	EET MID
Total/NA	Prep	8015NM Prep			10.01 g	10.00 mL	126560	12/12/25 15:34	EL	EET MID
Total/NA	Analysis	8015B NM		1	1 uL	1 uL	127326	12/20/25 17:09	FC	EET MID
Soluble	Leach	DI Leach			4.96 g	50 mL	126807	12/16/25 09:32	SA	EET MID
Soluble	Analysis	300.0		1			126831	12/16/25 17:06	CS	EET MID

Client Sample ID: CS -4 (0-0.25')
Date Collected: 12/12/25 00:00
Date Received: 12/12/25 13:26

Lab Sample ID: 880-66088-4
Matrix: Solid

Prep Type	Batch Type	Batch Method	Run	Dil Factor	Initial Amount	Final Amount	Batch Number	Prepared or Analyzed	Analyst	Lab
Total/NA	Prep	5035			5.03 g	5 mL	127065	12/18/25 10:14	MNR	EET MID
Total/NA	Analysis	8021B		1	5 mL	5 mL	127051	12/18/25 18:04	MNR	EET MID
Total/NA	Analysis	Total BTEX		1			127294	12/18/25 18:04	SA	EET MID

Eurofins Midland

Lab Chronicle

Client: Carmona Resources
Project/Site: Lea Unit West Flare (12.03.2025)

Job ID: 880-66088-1
SDG: Lea County New Mexico

Client Sample ID: CS -4 (0-0.25')
Date Collected: 12/12/25 00:00
Date Received: 12/12/25 13:26

Lab Sample ID: 880-66088-4
Matrix: Solid

Prep Type	Batch Type	Batch Method	Run	Dil Factor	Initial Amount	Final Amount	Batch Number	Prepared or Analyzed	Analyst	Lab
Total/NA	Analysis	8015 NM		1			127456	12/20/25 17:23	SA	EET MID
Total/NA	Prep	8015NM Prep			10.04 g	10.00 mL	126560	12/12/25 15:34	EL	EET MID
Total/NA	Analysis	8015B NM		1	1 uL	1 uL	127326	12/20/25 17:23	FC	EET MID
Soluble	Leach	DI Leach			5.04 g	50 mL	126807	12/16/25 09:32	SA	EET MID
Soluble	Analysis	300.0		1			126831	12/16/25 17:22	CS	EET MID

Laboratory References:
EET MID = Eurofins Midland, 1211 W. Florida Ave, Midland, TX 79701, TEL (432)704-5440

- 1
- 2
- 3
- 4
- 5
- 6
- 7
- 8
- 9
- 10
- 11
- 12
- 13
- 14

Accreditation/Certification Summary

Client: Carmona Resources
Project/Site: Lea Unit West Flare (12.03.2025)

Job ID: 880-66088-1
SDG: Lea County New Mexico

Laboratory: Eurofins Midland

Unless otherwise noted, all analytes for this laboratory were covered under each accreditation/certification below.

Authority	Program	Identification Number	Expiration Date
Texas	NELAP	T104704400	06-30-26
The following analytes are included in this report, but the laboratory is not certified by the governing authority. This list may include analytes for which the agency does not offer certification.			
Analysis Method	Prep Method	Matrix	Analyte
8015 NM		Solid	Total TPH
Total BTEX		Solid	Total BTEX

Method Summary

Client: Carmona Resources
Project/Site: Lea Unit West Flare (12.03.2025)

Job ID: 880-66088-1
SDG: Lea County New Mexico

Method	Method Description	Protocol	Laboratory
8021B	Volatile Organic Compounds (GC)	SW846	EET MID
Total BTEX	Total BTEX Calculation	TAL SOP	EET MID
8015 NM	Diesel Range Organics (DRO) (GC)	SW846	EET MID
8015B NM	Diesel Range Organics (DRO) (GC)	SW846	EET MID
300.0	Anions, Ion Chromatography	EPA	EET MID
5035	Closed System Purge and Trap	SW846	EET MID
8015NM Prep	Microextraction	SW846	EET MID
DI Leach	Deionized Water Leaching Procedure	ASTM	EET MID

Protocol References:

ASTM = ASTM International

EPA = US Environmental Protection Agency

SW846 = "Test Methods For Evaluating Solid Waste, Physical/Chemical Methods", Third Edition, November 1986 And Its Updates.

TAL SOP = TestAmerica Laboratories, Standard Operating Procedure

Laboratory References:

EET MID = Eurofins Midland, 1211 W. Florida Ave, Midland, TX 79701, TEL (432)704-5440

Sample Summary

Client: Carmona Resources
Project/Site: Lea Unit West Flare (12.03.2025)

Job ID: 880-66088-1
SDG: Lea County New Mexico

Lab Sample ID	Client Sample ID	Matrix	Collected	Received	Sample Origin
880-66088-1	CS -1 (0-0.25')	Solid	12/12/25 00:00	12/12/25 13:26	Texas
880-66088-2	CS -2 (0-0.25')	Solid	12/12/25 00:00	12/12/25 13:26	Texas
880-66088-3	CS -3 (0-0.25')	Solid	12/12/25 00:00	12/12/25 13:26	Texas
880-66088-4	CS -4 (0-0.25')	Solid	12/12/25 00:00	12/12/25 13:26	Texas

- 1
- 2
- 3
- 4
- 5
- 6
- 7
- 8
- 9
- 10
- 11
- 12
- 13
- 14

Chain of Custody



880-66088 Chain of Custody

Page 1 of 1

Project Manager:	Ashton Thielke	Bill to: (if different)	Laci Luig
Company Name:	Carmona Resources	Company Name:	Cimarex Energy
Address:	310 W Wall St Ste 500	Address:	600 N Marlenfield St, Suite 600
City, State ZIP:	Midland, TX 79701	City, State ZIP:	Midland, TX 79701
Phone:	432-813-8988	Email:	laci.luig@coterra.com & ashton.thielke@coterra.com

Program: UST/PT <input type="checkbox"/> PRP <input type="checkbox"/> Brownfields <input type="checkbox"/> RC <input type="checkbox"/> Iperfund <input type="checkbox"/>	
State of Project:	
Reporting Level I <input type="checkbox"/> Level II <input type="checkbox"/> Level III <input type="checkbox"/> ST/UST <input type="checkbox"/> RRP <input type="checkbox"/> Level IV <input type="checkbox"/>	Deliverables: EDD <input type="checkbox"/> ADAPT <input type="checkbox"/> Other: <input type="checkbox"/>

Project Name:	Lea Unit West Flare (12.03.2025)	Turn Around		Pres. Code	ANALYSIS REQUEST												Preservative Codes			
Project Number:	3084	<input checked="" type="checkbox"/> Routine	<input type="checkbox"/> Rush															None: NO	DI Water: H ₂ O	
Project Location:	Lea County, New Mexico	Due Date:	Standard TAT															Cool: Cool	MeOH: Me	
Sampler's Name:	JDC																	HCL: HC	HNO ₃ : HN	
PO #:																		H ₂ SO ₄ : H ₂	NaOH: Na	
SAMPLE RECEIPT	Temp Blank: Yes <input checked="" type="radio"/> No <input type="radio"/>	Yes <input checked="" type="radio"/> No <input type="radio"/>	Wet Ice: Yes <input checked="" type="radio"/> No <input type="radio"/>	Parameters														H ₃ PO ₄ : HP		
Received Intact:	Yes <input checked="" type="radio"/> No <input type="radio"/>	Thermometer ID:	1125	BTEX 8021B														NaHSO ₄ : NABIS		
Cooler Custody Seals:	Yes <input checked="" type="radio"/> No <input type="radio"/>	Correction Factor:	3.4	TPH 8015M (GRO + DRO + MRO)														Na ₂ S ₂ O ₃ : NaSO ₃		
Sample Custody Seals:	Yes <input checked="" type="radio"/> No <input type="radio"/>	Temperature Reading:	3.5	Chloride 300.0														Zn Acetate+NaOH: Zn		
Total Containers:	Yes <input checked="" type="radio"/> No <input type="radio"/>	Corrected Temperature:																NaOH+Ascorbic Acid: SAPC		
Sample Identification	Date	Time	Soil	Water	Grab/Comp	# of Cont												Sample Comments		
CS-1 (0-0.25)	12/12/2025		X		C	1	X	X	X											
CS-2 (0-0.25)	12/12/2025		X		C	1	X	X	X											
CS-3 (0-0.25)	12/12/2025		X		C	1	X	X	X											
CS-4 (0-0.25)	12/12/2025		X		C	1	X	X	X											

Comments:

Relinquished by: (Signature)

Date/Time

Received by: (Signature)

Date/Time

Login Sample Receipt Checklist

Client: Carmona Resources

Job Number: 880-66088-1
SDG Number: Lea County New Mexico

Login Number: 66088

List Number: 1

Creator: Neeld, Linsey

List Source: Eurofins Midland

Question	Answer	Comment
The cooler's custody seal, if present, is intact.	N/A	
Sample custody seals, if present, are intact.	N/A	
The cooler or samples do not appear to have been compromised or tampered with.	True	
Samples were received on ice.	True	
Cooler Temperature is acceptable.	True	
Cooler Temperature is recorded.	True	
COC is present	True	
COC is filled out in ink and legible.	True	
COC is filled out with all pertinent information	True	
Is the Field Sampler's name present on COC?	True	
There are no discrepancies between the containers received and the COC.	True	
Samples are received within Holding Time (excluding tests with immediate HTs)	True	
Sample containers have legible labels.	True	
Containers are not broken or leaking.	True	
Sample collection date/times are provided.	True	
Appropriate sample containers are used.	True	
Sample bottles are completely filled.	True	
Sample Preservation Verified.	N/A	
There is sufficient vol. for all requested analyses, incl. any requested MS/MSDs	True	
Containers requiring zero headspace have no headspace or bubble is <6mm (1/4").	N/A	



Environment Testing

1

2

3

4

5

6

7

8

9

10

11

12

13

14

ANALYTICAL REPORT

PREPARED FOR

Attn: Ashton Thielke
Carmona Resources
310 W Wall St
Ste 500
Midland, Texas 79701

Generated 12/22/2025 1:58:30 PM

JOB DESCRIPTION

Lea Unit West Flare (12.03.2025)
Lea County New Mexico

JOB NUMBER

880-66089-1

Eurofins Midland
1211 W. Florida Ave
Midland TX 79701

Eurofins Midland

Job Notes

This report may not be reproduced except in full, and with written approval from the laboratory. The results relate only to the samples tested. For questions please contact the Project Manager at the e-mail address or telephone number listed on this page.

Analytical test results meet all requirements of the associated regulatory program (i.e., NELAC (TNI), DoD, and ISO 17025) unless otherwise noted under the individual analysis.

Authorization



Generated
12/22/2025 1:58:30 PM

Authorized for release by
Jessica Kramer, Project Manager
Jessica.Kramer@et.eurofinsus.com
(432)704-5440

Client: Carmona Resources
Project/Site: Lea Unit West Flare (12.03.2025)

Laboratory Job ID: 880-66089-1
SDG: Lea County New Mexico

Table of Contents

Cover Page	1
Table of Contents	3
Definitions/Glossary	4
Case Narrative	5
Client Sample Results	6
Surrogate Summary	9
QC Sample Results	10
QC Association Summary	14
Lab Chronicle	16
Certification Summary	18
Method Summary	19
Sample Summary	20
Chain of Custody	21
Receipt Checklists	22

- 1
- 2
- 3
- 4
- 5
- 6
- 7
- 8
- 9
- 10
- 11
- 12
- 13
- 14

Definitions/Glossary

Client: Carmona Resources
Project/Site: Lea Unit West Flare (12.03.2025)

Job ID: 880-66089-1
SDG: Lea County New Mexico

Qualifiers

GC VOA

Qualifier	Qualifier Description
*+	LCS and/or LCSD is outside acceptance limits, high biased.
S1+	Surrogate recovery exceeds control limits, high biased.
U	Indicates the analyte was analyzed for but not detected.

GC Semi VOA

Qualifier	Qualifier Description
S1+	Surrogate recovery exceeds control limits, high biased.
U	Indicates the analyte was analyzed for but not detected.

HPLC/IC

Qualifier	Qualifier Description
U	Indicates the analyte was analyzed for but not detected.

Glossary

Abbreviation	These commonly used abbreviations may or may not be present in this report.
☼	Listed under the "D" column to designate that the result is reported on a dry weight basis
%R	Percent Recovery
CFL	Contains Free Liquid
CFU	Colony Forming Unit
CNF	Contains No Free Liquid
DER	Duplicate Error Ratio (normalized absolute difference)
Dil Fac	Dilution Factor
DL	Detection Limit (DoD/DOE)
DL, RA, RE, IN	Indicates a Dilution, Re-analysis, Re-extraction, or additional Initial metals/anion analysis of the sample
DLC	Decision Level Concentration (Radiochemistry)
EDL	Estimated Detection Limit (Dioxin)
LOD	Limit of Detection (DoD/DOE)
LOQ	Limit of Quantitation (DoD/DOE)
MCL	EPA recommended "Maximum Contaminant Level"
MDA	Minimum Detectable Activity (Radiochemistry)
MDC	Minimum Detectable Concentration (Radiochemistry)
MDL	Method Detection Limit
ML	Minimum Level (Dioxin)
MPN	Most Probable Number
MQL	Method Quantitation Limit
NC	Not Calculated
ND	Not Detected at the reporting limit (or MDL or EDL if shown)
NEG	Negative / Absent
POS	Positive / Present
PQL	Practical Quantitation Limit
PRES	Presumptive
QC	Quality Control
RER	Relative Error Ratio (Radiochemistry)
RL	Reporting Limit or Requested Limit (Radiochemistry)
RPD	Relative Percent Difference, a measure of the relative difference between two points
TEF	Toxicity Equivalent Factor (Dioxin)
TEQ	Toxicity Equivalent Quotient (Dioxin)
TNTC	Too Numerous To Count

Case Narrative

Client: Carmona Resources
Project: Lea Unit West Flare (12.03.2025)

Job ID: 880-66089-1

Job ID: 880-66089-1

Eurofins Midland

Job Narrative 880-66089-1

The analytical test results presented in this report meet all requirements of the associated regulatory program listed on the Accreditation/Certification Summary Page, unless otherwise noted. Data qualifiers and/or narrative comments are included to explain any exceptions, if applicable. Regulated compliance samples (e.g. SDWA, NPDES) must comply with associated agency requirements/permits.

- Matrix-specific batch QC (e.g., MS, MSD, SD) may not be reported when insufficient sample volume is available or when site-specific QC samples are not submitted. In such cases, a Laboratory Control Sample Duplicate (LCSD) may be analyzed to provide precision data for the batch.
- For samples analyzed using surrogate and/or isotope dilution analytes, any recoveries falling outside of established acceptance criteria are re-prepared and/or re-analyzed to confirm results, unless the deviation is due to sample dilution or otherwise explained in the case narrative.

Receipt

The samples were received on 12/12/2025 1:26 PM. Unless otherwise noted below, the samples arrived in good condition, and, where required, properly preserved and on ice. The temperature of the cooler at receipt time was 3.5°C.

Receipt Exceptions

The following samples were received and analyzed from an unpreserved bulk soil jar: H-1 (0-0.5') (880-66089-1), H-2 (0-0.5') (880-66089-2), H-3 (0-0.5') (880-66089-3) and H-4 (0-0.5') (880-66089-4).

GC VOA

Method 8021B: The laboratory control sample duplicate (LCSD) associated with preparation batch 880-127065 and analytical batch 880-127051 was outside acceptance criteria. Re-extraction and/or re-analysis could not be performed; therefore, the data have been reported. The batch matrix spike/matrix spike duplicate (MS/MSD) was within acceptance limits and may be used to evaluate matrix performance.

Method 8021B: Surrogate recovery for the following samples were outside control limits: H-1 (0-0.5') (880-66089-1), H-2 (0-0.5') (880-66089-2) and (CCV 880-127051/33). Evidence of matrix interference is present; therefore, re-extraction and/or re-analysis was not performed.

Method 8021B: The surrogate recovery for the blank associated with preparation batch 880-127065 and analytical batch 880-127051 was outside the upper control limits.

Method 8021B: Surrogate recovery for the following samples were outside control limits: (LCS 880-127065/1-A), (LCSD 880-127065/2-A), (890-9241-A-8-E), (890-9241-A-8-C MS) and (890-9241-A-8-D MSD). Evidence of matrix interferences is not obvious.

No additional analytical or quality issues were noted, other than those described above or in the Definitions/ Glossary page.

Diesel Range Organics

Method 8015MOD_NM: Surrogate recovery for the following sample was outside control limits: (880-66087-A-23-B MS). Evidence of matrix interference is present; therefore, re-extraction and/or re-analysis was not performed.

No additional analytical or quality issues were noted, other than those described above or in the Definitions/ Glossary page.

HPLC/IC

No additional analytical or quality issues were noted, other than those described above or in the Definitions/ Glossary page.

Eurofins Midland

Client Sample Results

Client: Carmona Resources
Project/Site: Lea Unit West Flare (12.03.2025)

Job ID: 880-66089-1
SDG: Lea County New Mexico

Client Sample ID: H-1 (0-0.5')

Lab Sample ID: 880-66089-1

Date Collected: 12/12/25 00:00

Matrix: Solid

Date Received: 12/12/25 13:26

Method: SW846 8021B - Volatile Organic Compounds (GC)

Analyte	Result	Qualifier	RL	MDL	Unit	D	Prepared	Analyzed	Dil Fac
Benzene	<0.00200	U	0.00200		mg/Kg		12/18/25 10:14	12/18/25 18:25	1
Toluene	<0.00200	U	0.00200		mg/Kg		12/18/25 10:14	12/18/25 18:25	1
Ethylbenzene	<0.00200	U	0.00200		mg/Kg		12/18/25 10:14	12/18/25 18:25	1
m-Xylene & p-Xylene	<0.00400	U	0.00400		mg/Kg		12/18/25 10:14	12/18/25 18:25	1
o-Xylene	<0.00200	U **	0.00200		mg/Kg		12/18/25 10:14	12/18/25 18:25	1
Xylenes, Total	<0.00400	U	0.00400		mg/Kg		12/18/25 10:14	12/18/25 18:25	1
Surrogate	%Recovery	Qualifier	Limits				Prepared	Analyzed	Dil Fac
4-Bromofluorobenzene (Surr)	283	S1+	70 - 130				12/18/25 10:14	12/18/25 18:25	1
1,4-Difluorobenzene (Surr)	82		70 - 130				12/18/25 10:14	12/18/25 18:25	1

Method: TAL SOP Total BTEX - Total BTEX Calculation

Analyte	Result	Qualifier	RL	MDL	Unit	D	Prepared	Analyzed	Dil Fac
Total BTEX	<0.00400	U	0.00400		mg/Kg			12/18/25 18:25	1

Method: SW846 8015 NM - Diesel Range Organics (DRO) (GC)

Analyte	Result	Qualifier	RL	MDL	Unit	D	Prepared	Analyzed	Dil Fac
Total TPH	<49.8	U	49.8		mg/Kg			12/20/25 17:39	1

Method: SW846 8015B NM - Diesel Range Organics (DRO) (GC)

Analyte	Result	Qualifier	RL	MDL	Unit	D	Prepared	Analyzed	Dil Fac
Gasoline Range Organics (GRO)-C6-C10	<49.8	U	49.8		mg/Kg		12/12/25 15:34	12/20/25 17:39	1
Diesel Range Organics (Over C10-C28)	<49.8	U	49.8		mg/Kg		12/12/25 15:34	12/20/25 17:39	1
Oil Range Organics (Over C28-C36)	<49.8	U	49.8		mg/Kg		12/12/25 15:34	12/20/25 17:39	1
Surrogate	%Recovery	Qualifier	Limits				Prepared	Analyzed	Dil Fac
1-Chlorooctane (Surr)	120		70 - 130				12/12/25 15:34	12/20/25 17:39	1
o-Terphenyl (Surr)	109		70 - 130				12/12/25 15:34	12/20/25 17:39	1

Method: EPA 300.0 - Anions, Ion Chromatography - Soluble

Analyte	Result	Qualifier	RL	MDL	Unit	D	Prepared	Analyzed	Dil Fac
Chloride	18.0		9.92		mg/Kg			12/16/25 17:27	1

Client Sample ID: H-2 (0-0.5')

Lab Sample ID: 880-66089-2

Date Collected: 12/12/25 00:00

Matrix: Solid

Date Received: 12/12/25 13:26

Method: SW846 8021B - Volatile Organic Compounds (GC)

Analyte	Result	Qualifier	RL	MDL	Unit	D	Prepared	Analyzed	Dil Fac
Benzene	<0.00200	U	0.00200		mg/Kg		12/18/25 10:14	12/18/25 18:45	1
Toluene	<0.00200	U	0.00200		mg/Kg		12/18/25 10:14	12/18/25 18:45	1
Ethylbenzene	<0.00200	U	0.00200		mg/Kg		12/18/25 10:14	12/18/25 18:45	1
m-Xylene & p-Xylene	<0.00399	U	0.00399		mg/Kg		12/18/25 10:14	12/18/25 18:45	1
o-Xylene	<0.00200	U **	0.00200		mg/Kg		12/18/25 10:14	12/18/25 18:45	1
Xylenes, Total	<0.00399	U	0.00399		mg/Kg		12/18/25 10:14	12/18/25 18:45	1
Surrogate	%Recovery	Qualifier	Limits				Prepared	Analyzed	Dil Fac
4-Bromofluorobenzene (Surr)	397	S1+	70 - 130				12/18/25 10:14	12/18/25 18:45	1
1,4-Difluorobenzene (Surr)	95		70 - 130				12/18/25 10:14	12/18/25 18:45	1

Eurofins Midland

Client Sample Results

Client: Carmona Resources
Project/Site: Lea Unit West Flare (12.03.2025)

Job ID: 880-66089-1
SDG: Lea County New Mexico

Client Sample ID: H-2 (0-0.5')

Lab Sample ID: 880-66089-2

Date Collected: 12/12/25 00:00

Matrix: Solid

Date Received: 12/12/25 13:26

Method: TAL SOP Total BTEX - Total BTEX Calculation

Analyte	Result	Qualifier	RL	MDL	Unit	D	Prepared	Analyzed	Dil Fac
Total BTEX	<0.00399	U	0.00399		mg/Kg			12/18/25 18:45	1

Method: SW846 8015 NM - Diesel Range Organics (DRO) (GC)

Analyte	Result	Qualifier	RL	MDL	Unit	D	Prepared	Analyzed	Dil Fac
Total TPH	<50.0	U	50.0		mg/Kg			12/20/25 17:54	1

Method: SW846 8015B NM - Diesel Range Organics (DRO) (GC)

Analyte	Result	Qualifier	RL	MDL	Unit	D	Prepared	Analyzed	Dil Fac
Gasoline Range Organics (GRO)-C6-C10	<50.0	U	50.0		mg/Kg		12/12/25 15:34	12/20/25 17:54	1
Diesel Range Organics (Over C10-C28)	<50.0	U	50.0		mg/Kg		12/12/25 15:34	12/20/25 17:54	1
Oil Range Organics (Over C28-C36)	<50.0	U	50.0		mg/Kg		12/12/25 15:34	12/20/25 17:54	1
Surrogate	%Recovery	Qualifier	Limits				Prepared	Analyzed	Dil Fac
1-Chlorooctane (Surr)	127		70 - 130				12/12/25 15:34	12/20/25 17:54	1
o-Terphenyl (Surr)	116		70 - 130				12/12/25 15:34	12/20/25 17:54	1

Method: EPA 300.0 - Anions, Ion Chromatography - Soluble

Analyte	Result	Qualifier	RL	MDL	Unit	D	Prepared	Analyzed	Dil Fac
Chloride	24.1		10.1		mg/Kg			12/16/25 17:32	1

Client Sample ID: H-3 (0-0.5')

Lab Sample ID: 880-66089-3

Date Collected: 12/12/25 00:00

Matrix: Solid

Date Received: 12/12/25 13:26

Method: SW846 8021B - Volatile Organic Compounds (GC)

Analyte	Result	Qualifier	RL	MDL	Unit	D	Prepared	Analyzed	Dil Fac
Benzene	<0.00201	U	0.00201		mg/Kg		12/18/25 10:14	12/18/25 19:06	1
Toluene	<0.00201	U	0.00201		mg/Kg		12/18/25 10:14	12/18/25 19:06	1
Ethylbenzene	<0.00201	U	0.00201		mg/Kg		12/18/25 10:14	12/18/25 19:06	1
m-Xylene & p-Xylene	<0.00402	U	0.00402		mg/Kg		12/18/25 10:14	12/18/25 19:06	1
o-Xylene	<0.00201	U **	0.00201		mg/Kg		12/18/25 10:14	12/18/25 19:06	1
Xylenes, Total	<0.00402	U	0.00402		mg/Kg		12/18/25 10:14	12/18/25 19:06	1
Surrogate	%Recovery	Qualifier	Limits				Prepared	Analyzed	Dil Fac
4-Bromofluorobenzene (Surr)	352	S1+	70 - 130				12/18/25 10:14	12/18/25 19:06	1
1,4-Difluorobenzene (Surr)	90		70 - 130				12/18/25 10:14	12/18/25 19:06	1

Method: TAL SOP Total BTEX - Total BTEX Calculation

Analyte	Result	Qualifier	RL	MDL	Unit	D	Prepared	Analyzed	Dil Fac
Total BTEX	<0.00402	U	0.00402		mg/Kg			12/18/25 19:06	1

Method: SW846 8015 NM - Diesel Range Organics (DRO) (GC)

Analyte	Result	Qualifier	RL	MDL	Unit	D	Prepared	Analyzed	Dil Fac
Total TPH	<50.2	U	50.2		mg/Kg			12/20/25 18:09	1

Method: SW846 8015B NM - Diesel Range Organics (DRO) (GC)

Analyte	Result	Qualifier	RL	MDL	Unit	D	Prepared	Analyzed	Dil Fac
Gasoline Range Organics (GRO)-C6-C10	<50.2	U	50.2		mg/Kg		12/12/25 15:34	12/20/25 18:09	1
Diesel Range Organics (Over C10-C28)	<50.2	U	50.2		mg/Kg		12/12/25 15:34	12/20/25 18:09	1

Eurofins Midland

Client Sample Results

Client: Carmona Resources
Project/Site: Lea Unit West Flare (12.03.2025)

Job ID: 880-66089-1
SDG: Lea County New Mexico

Client Sample ID: H-3 (0-0.5')

Lab Sample ID: 880-66089-3

Date Collected: 12/12/25 00:00

Matrix: Solid

Date Received: 12/12/25 13:26

Method: SW846 8015B NM - Diesel Range Organics (DRO) (GC) (Continued)

Analyte	Result	Qualifier	RL	MDL	Unit	D	Prepared	Analyzed	Dil Fac
Oil Range Organics (Over C28-C36)	<50.2	U	50.2		mg/Kg		12/12/25 15:34	12/20/25 18:09	1
Surrogate	%Recovery	Qualifier	Limits				Prepared	Analyzed	Dil Fac
1-Chlorooctane (Surr)	125		70 - 130				12/12/25 15:34	12/20/25 18:09	1
o-Terphenyl (Surr)	113		70 - 130				12/12/25 15:34	12/20/25 18:09	1

Method: EPA 300.0 - Anions, Ion Chromatography - Soluble

Analyte	Result	Qualifier	RL	MDL	Unit	D	Prepared	Analyzed	Dil Fac
Chloride	156		9.94		mg/Kg			12/16/25 17:38	1

Client Sample ID: H-4 (0-0.5')

Lab Sample ID: 880-66089-4

Date Collected: 12/12/25 00:00

Matrix: Solid

Date Received: 12/12/25 13:26

Method: SW846 8021B - Volatile Organic Compounds (GC)

Analyte	Result	Qualifier	RL	MDL	Unit	D	Prepared	Analyzed	Dil Fac
Benzene	<0.00202	U	0.00202		mg/Kg		12/18/25 10:14	12/18/25 19:26	1
Toluene	<0.00202	U	0.00202		mg/Kg		12/18/25 10:14	12/18/25 19:26	1
Ethylbenzene	<0.00202	U	0.00202		mg/Kg		12/18/25 10:14	12/18/25 19:26	1
m-Xylene & p-Xylene	<0.00404	U	0.00404		mg/Kg		12/18/25 10:14	12/18/25 19:26	1
o-Xylene	<0.00202	U **	0.00202		mg/Kg		12/18/25 10:14	12/18/25 19:26	1
Xylenes, Total	<0.00404	U	0.00404		mg/Kg		12/18/25 10:14	12/18/25 19:26	1
Surrogate	%Recovery	Qualifier	Limits				Prepared	Analyzed	Dil Fac
4-Bromofluorobenzene (Surr)	398	S1+	70 - 130				12/18/25 10:14	12/18/25 19:26	1
1,4-Difluorobenzene (Surr)	99		70 - 130				12/18/25 10:14	12/18/25 19:26	1

Method: TAL SOP Total BTEX - Total BTEX Calculation

Analyte	Result	Qualifier	RL	MDL	Unit	D	Prepared	Analyzed	Dil Fac
Total BTEX	<0.00404	U	0.00404		mg/Kg			12/18/25 19:26	1

Method: SW846 8015 NM - Diesel Range Organics (DRO) (GC)

Analyte	Result	Qualifier	RL	MDL	Unit	D	Prepared	Analyzed	Dil Fac
Total TPH	<50.1	U	50.1		mg/Kg			12/20/25 18:39	1

Method: SW846 8015B NM - Diesel Range Organics (DRO) (GC)

Analyte	Result	Qualifier	RL	MDL	Unit	D	Prepared	Analyzed	Dil Fac
Gasoline Range Organics (GRO)-C6-C10	<50.1	U	50.1		mg/Kg		12/12/25 15:34	12/20/25 18:39	1
Diesel Range Organics (Over C10-C28)	<50.1	U	50.1		mg/Kg		12/12/25 15:34	12/20/25 18:39	1
Oil Range Organics (Over C28-C36)	<50.1	U	50.1		mg/Kg		12/12/25 15:34	12/20/25 18:39	1
Surrogate	%Recovery	Qualifier	Limits				Prepared	Analyzed	Dil Fac
1-Chlorooctane (Surr)	123		70 - 130				12/12/25 15:34	12/20/25 18:39	1
o-Terphenyl (Surr)	111		70 - 130				12/12/25 15:34	12/20/25 18:39	1

Method: EPA 300.0 - Anions, Ion Chromatography - Soluble

Analyte	Result	Qualifier	RL	MDL	Unit	D	Prepared	Analyzed	Dil Fac
Chloride	86.4		9.92		mg/Kg			12/16/25 17:43	1

Eurofins Midland

Surrogate Summary

Client: Carmona Resources
Project/Site: Lea Unit West Flare (12.03.2025)

Job ID: 880-66089-1
SDG: Lea County New Mexico

Method: 8021B - Volatile Organic Compounds (GC)

Matrix: Solid

Prep Type: Total/NA

		Percent Surrogate Recovery (Acceptance Limits)	
Lab Sample ID	Client Sample ID	BFB1 (70-130)	DFBZ1 (70-130)
880-66089-1	H-1 (0-0.5')	283 S1+	82
880-66089-2	H-2 (0-0.5')	397 S1+	95
880-66089-3	H-3 (0-0.5')	352 S1+	90
880-66089-4	H-4 (0-0.5')	398 S1+	99
890-9241-A-8-C MS	Matrix Spike	222 S1+	90
890-9241-A-8-D MSD	Matrix Spike Duplicate	207 S1+	75
LCS 880-127065/1-A	Lab Control Sample	232 S1+	81
LCSD 880-127065/2-A	Lab Control Sample Dup	253 S1+	77
MB 880-127065/5-A	Method Blank	292 S1+	76
Surrogate Legend			
BFB = 4-Bromofluorobenzene (Surr)			
DFBZ = 1,4-Difluorobenzene (Surr)			

Method: 8015B NM - Diesel Range Organics (DRO) (GC)

Matrix: Solid

Prep Type: Total/NA

		Percent Surrogate Recovery (Acceptance Limits)	
Lab Sample ID	Client Sample ID	1CO1 (70-130)	OTPH1 (70-130)
880-66087-A-23-B MS	Matrix Spike	145 S1+	115
880-66087-A-23-C MSD	Matrix Spike Duplicate	118	117
880-66089-1	H-1 (0-0.5')	120	109
880-66089-2	H-2 (0-0.5')	127	116
880-66089-3	H-3 (0-0.5')	125	113
880-66089-4	H-4 (0-0.5')	123	111
LCS 880-126560/2-A	Lab Control Sample	116	119
LCSD 880-126560/3-A	Lab Control Sample Dup	101	101
MB 880-126560/1-A	Method Blank	130	115
Surrogate Legend			
1CO = 1-Chlorooctane (Surr)			
OTPH = o-Terphenyl (Surr)			

QC Sample Results

Client: Carmona Resources
Project/Site: Lea Unit West Flare (12.03.2025)

Job ID: 880-66089-1
SDG: Lea County New Mexico

Method: 8021B - Volatile Organic Compounds (GC)

Lab Sample ID: MB 880-127065/5-A

Matrix: Solid

Analysis Batch: 127051

Client Sample ID: Method Blank

Prep Type: Total/NA

Prep Batch: 127065

Analyte	MB Result	MB Qualifier	RL	MDL	Unit	D	Prepared	Analyzed	Dil Fac
Benzene	<0.00200	U	0.00200		mg/Kg		12/18/25 10:14	12/18/25 11:23	1
Toluene	<0.00200	U	0.00200		mg/Kg		12/18/25 10:14	12/18/25 11:23	1
Ethylbenzene	<0.00200	U	0.00200		mg/Kg		12/18/25 10:14	12/18/25 11:23	1
m-Xylene & p-Xylene	<0.00400	U	0.00400		mg/Kg		12/18/25 10:14	12/18/25 11:23	1
o-Xylene	<0.00200	U	0.00200		mg/Kg		12/18/25 10:14	12/18/25 11:23	1
Xylenes, Total	<0.00400	U	0.00400		mg/Kg		12/18/25 10:14	12/18/25 11:23	1

Surrogate	MB %Recovery	MB Qualifier	Limits	Prepared	Analyzed	Dil Fac
4-Bromofluorobenzene (Surr)	292	S1+	70 - 130	12/18/25 10:14	12/18/25 11:23	1
1,4-Difluorobenzene (Surr)	76		70 - 130	12/18/25 10:14	12/18/25 11:23	1

Lab Sample ID: LCS 880-127065/1-A

Matrix: Solid

Analysis Batch: 127051

Client Sample ID: Lab Control Sample

Prep Type: Total/NA

Prep Batch: 127065

Analyte	Spike Added	LCS Result	LCS Qualifier	Unit	D	%Rec	%Rec Limits
Benzene	0.100	0.1002		mg/Kg		100	70 - 130
Toluene	0.100	0.1108		mg/Kg		111	70 - 130
Ethylbenzene	0.100	0.1085		mg/Kg		108	70 - 130
m-Xylene & p-Xylene	0.200	0.2259		mg/Kg		113	70 - 130
o-Xylene	0.100	0.1163		mg/Kg		116	70 - 130

Surrogate	LCS %Recovery	LCS Qualifier	Limits
4-Bromofluorobenzene (Surr)	232	S1+	70 - 130
1,4-Difluorobenzene (Surr)	81		70 - 130

Lab Sample ID: LCSD 880-127065/2-A

Matrix: Solid

Analysis Batch: 127051

Client Sample ID: Lab Control Sample Dup

Prep Type: Total/NA

Prep Batch: 127065

Analyte	Spike Added	LCSD Result	LCSD Qualifier	Unit	D	%Rec	%Rec Limits	RPD	RPD Limit
Benzene	0.100	0.1118		mg/Kg		112	70 - 130	11	35
Toluene	0.100	0.1247		mg/Kg		125	70 - 130	12	35
Ethylbenzene	0.100	0.1237		mg/Kg		124	70 - 130	13	35
m-Xylene & p-Xylene	0.200	0.2565		mg/Kg		128	70 - 130	13	35
o-Xylene	0.100	0.1321	*+	mg/Kg		132	70 - 130	13	35

Surrogate	LCSD %Recovery	LCSD Qualifier	Limits
4-Bromofluorobenzene (Surr)	253	S1+	70 - 130
1,4-Difluorobenzene (Surr)	77		70 - 130

Lab Sample ID: 890-9241-A-8-C MS

Matrix: Solid

Analysis Batch: 127051

Client Sample ID: Matrix Spike

Prep Type: Total/NA

Prep Batch: 127065

Analyte	Sample Result	Sample Qualifier	Spike Added	MS Result	MS Qualifier	Unit	D	%Rec	%Rec Limits
Benzene	<0.00109	U	0.100	0.1068		mg/Kg		107	70 - 130
Toluene	<0.00109	U	0.100	0.1124		mg/Kg		112	70 - 130

Eurofins Midland

QC Sample Results

Client: Carmona Resources
Project/Site: Lea Unit West Flare (12.03.2025)

Job ID: 880-66089-1
SDG: Lea County New Mexico

Method: 8021B - Volatile Organic Compounds (GC) (Continued)

Lab Sample ID: 890-9241-A-8-C MS

Matrix: Solid

Analysis Batch: 127051

Client Sample ID: Matrix Spike

Prep Type: Total/NA

Prep Batch: 127065

Analyte	Sample Result	Sample Qualifier	Spike Added	MS Result	MS Qualifier	Unit	D	%Rec	%Rec Limits
Ethylbenzene	<0.00109	U	0.100	0.1105		mg/Kg		111	70 - 130
m-Xylene & p-Xylene	<0.00219	U	0.200	0.2322		mg/Kg		116	70 - 130
o-Xylene	<0.00109	U *	0.100	0.1170		mg/Kg		117	70 - 130
Surrogate	MS %Recovery	MS Qualifier	Limits						
4-Bromofluorobenzene (Surr)	222	S1+	70 - 130						
1,4-Difluorobenzene (Surr)	90		70 - 130						

Lab Sample ID: 890-9241-A-8-D MSD

Matrix: Solid

Analysis Batch: 127051

Client Sample ID: Matrix Spike Duplicate

Prep Type: Total/NA

Prep Batch: 127065

Analyte	Sample Result	Sample Qualifier	Spike Added	MSD Result	MSD Qualifier	Unit	D	%Rec	%Rec Limits	RPD	RPD Limit
Benzene	<0.00109	U	0.100	0.1073		mg/Kg		107	70 - 130	0	35
Toluene	<0.00109	U	0.100	0.1100		mg/Kg		110	70 - 130	2	35
Ethylbenzene	<0.00109	U	0.100	0.1080		mg/Kg		108	70 - 130	2	35
m-Xylene & p-Xylene	<0.00219	U	0.200	0.2260		mg/Kg		113	70 - 130	3	35
o-Xylene	<0.00109	U *	0.100	0.1133		mg/Kg		113	70 - 130	3	35
Surrogate	MSD %Recovery	MSD Qualifier	Limits								
4-Bromofluorobenzene (Surr)	207	S1+	70 - 130								
1,4-Difluorobenzene (Surr)	75		70 - 130								

Method: 8015B NM - Diesel Range Organics (DRO) (GC)

Lab Sample ID: MB 880-126560/1-A

Matrix: Solid

Analysis Batch: 127326

Client Sample ID: Method Blank

Prep Type: Total/NA

Prep Batch: 126560

Analyte	MB Result	MB Qualifier	RL	MDL	Unit	D	Prepared	Analyzed	Dil Fac
Gasoline Range Organics (GRO)-C6-C10	<50.0	U	50.0		mg/Kg		12/12/25 15:33	12/20/25 08:31	1
Diesel Range Organics (Over C10-C28)	<50.0	U	50.0		mg/Kg		12/12/25 15:33	12/20/25 08:31	1
Oil Range Organics (Over C28-C36)	<50.0	U	50.0		mg/Kg		12/12/25 15:33	12/20/25 08:31	1
Surrogate	MB %Recovery	MB Qualifier	Limits						
1-Chlorooctane (Surr)	130		70 - 130						
o-Terphenyl (Surr)	115		70 - 130						

Lab Sample ID: LCS 880-126560/2-A

Matrix: Solid

Analysis Batch: 127326

Client Sample ID: Lab Control Sample

Prep Type: Total/NA

Prep Batch: 126560

Analyte	Spike Added	LCS Result	LCS Qualifier	Unit	D	%Rec	%Rec Limits
Gasoline Range Organics (GRO)-C6-C10	1000	1248		mg/Kg		125	70 - 130
Diesel Range Organics (Over C10-C28)	1000	1290		mg/Kg		129	70 - 130

Eurofins Midland

QC Sample Results

Client: Carmona Resources
Project/Site: Lea Unit West Flare (12.03.2025)

Job ID: 880-66089-1
SDG: Lea County New Mexico

Method: 8015B NM - Diesel Range Organics (DRO) (GC) (Continued)

Lab Sample ID: LCS 880-126560/2-A

Matrix: Solid

Analysis Batch: 127326

Client Sample ID: Lab Control Sample

Prep Type: Total/NA

Prep Batch: 126560

	LCS	LCS	
Surrogate	%Recovery	Qualifier	Limits
1-Chlorooctane (Surr)	116		70 - 130
o-Terphenyl (Surr)	119		70 - 130

Lab Sample ID: LCSD 880-126560/3-A

Matrix: Solid

Analysis Batch: 127326

Client Sample ID: Lab Control Sample Dup

Prep Type: Total/NA

Prep Batch: 126560

Analyte	Spike Added	LCSD Result	LCSD Qualifier	Unit	D	%Rec	%Rec Limits	RPD	RPD Limit
Gasoline Range Organics (GRO)-C6-C10	1000	1094		mg/Kg		109	70 - 130	13	20
Diesel Range Organics (Over C10-C28)	1000	1129		mg/Kg		113	70 - 130	13	20

	LCSD	LCSD	
Surrogate	%Recovery	Qualifier	Limits
1-Chlorooctane (Surr)	101		70 - 130
o-Terphenyl (Surr)	101		70 - 130

Lab Sample ID: 880-66087-A-23-B MS

Matrix: Solid

Analysis Batch: 127326

Client Sample ID: Matrix Spike

Prep Type: Total/NA

Prep Batch: 126560

Analyte	Sample Result	Sample Qualifier	Spike Added	MS Result	MS Qualifier	Unit	D	%Rec	%Rec Limits
Gasoline Range Organics (GRO)-C6-C10	<50.4	U	991	953.9		mg/Kg		96	70 - 130
Diesel Range Organics (Over C10-C28)	<50.4	U	991	924.0		mg/Kg		93	70 - 130

	MS	MS	
Surrogate	%Recovery	Qualifier	Limits
1-Chlorooctane (Surr)	145	S1+	70 - 130
o-Terphenyl (Surr)	115		70 - 130

Lab Sample ID: 880-66087-A-23-C MSD

Matrix: Solid

Analysis Batch: 127326

Client Sample ID: Matrix Spike Duplicate

Prep Type: Total/NA

Prep Batch: 126560

Analyte	Sample Result	Sample Qualifier	Spike Added	MSD Result	MSD Qualifier	Unit	D	%Rec	%Rec Limits	RPD	RPD Limit
Gasoline Range Organics (GRO)-C6-C10	<50.4	U	991	949.2		mg/Kg		96	70 - 130	0	20
Diesel Range Organics (Over C10-C28)	<50.4	U	991	992.6		mg/Kg		100	70 - 130	7	20

	MSD	MSD	
Surrogate	%Recovery	Qualifier	Limits
1-Chlorooctane (Surr)	118		70 - 130
o-Terphenyl (Surr)	117		70 - 130

Eurofins Midland

QC Sample Results

Client: Carmona Resources
Project/Site: Lea Unit West Flare (12.03.2025)

Job ID: 880-66089-1
SDG: Lea County New Mexico

Method: 300.0 - Anions, Ion Chromatography

Lab Sample ID: MB 880-126807/1-A

Matrix: Solid

Analysis Batch: 126831

Client Sample ID: Method Blank

Prep Type: Soluble

Analyte	MB Result	MB Qualifier	RL	MDL	Unit	D	Prepared	Analyzed	Dil Fac
Chloride	<10.0	U	10.0		mg/Kg			12/16/25 15:14	1

Lab Sample ID: LCS 880-126807/2-A

Matrix: Solid

Analysis Batch: 126831

Client Sample ID: Lab Control Sample

Prep Type: Soluble

Analyte	Spike Added	LCS Result	LCS Qualifier	Unit	D	%Rec	%Rec Limits
Chloride	250	235.3		mg/Kg		94	90 - 110

Lab Sample ID: LCSD 880-126807/3-A

Matrix: Solid

Analysis Batch: 126831

Client Sample ID: Lab Control Sample Dup

Prep Type: Soluble

Analyte	Spike Added	LCSD Result	LCSD Qualifier	Unit	D	%Rec	%Rec Limits	RPD	RPD Limit
Chloride	250	234.9		mg/Kg		94	90 - 110	0	20

Lab Sample ID: 880-66088-A-1-D MS

Matrix: Solid

Analysis Batch: 126831

Client Sample ID: Matrix Spike

Prep Type: Soluble

Analyte	Sample Result	Sample Qualifier	Spike Added	MS Result	MS Qualifier	Unit	D	%Rec	%Rec Limits
Chloride	343		251	599.2		mg/Kg		102	90 - 110

Lab Sample ID: 880-66088-A-1-E MSD

Matrix: Solid

Analysis Batch: 126831

Client Sample ID: Matrix Spike Duplicate

Prep Type: Soluble

Analyte	Sample Result	Sample Qualifier	Spike Added	MSD Result	MSD Qualifier	Unit	D	%Rec	%Rec Limits	RPD	RPD Limit
Chloride	343		251	596.4		mg/Kg		101	90 - 110	0	20

QC Association Summary

Client: Carmona Resources
Project/Site: Lea Unit West Flare (12.03.2025)

Job ID: 880-66089-1
SDG: Lea County New Mexico

GC VOA

Analysis Batch: 127051

Lab Sample ID	Client Sample ID	Prep Type	Matrix	Method	Prep Batch
880-66089-1	H-1 (0-0.5')	Total/NA	Solid	8021B	127065
880-66089-2	H-2 (0-0.5')	Total/NA	Solid	8021B	127065
880-66089-3	H-3 (0-0.5')	Total/NA	Solid	8021B	127065
880-66089-4	H-4 (0-0.5')	Total/NA	Solid	8021B	127065
MB 880-127065/5-A	Method Blank	Total/NA	Solid	8021B	127065
LCS 880-127065/1-A	Lab Control Sample	Total/NA	Solid	8021B	127065
LCSD 880-127065/2-A	Lab Control Sample Dup	Total/NA	Solid	8021B	127065
890-9241-A-8-C MS	Matrix Spike	Total/NA	Solid	8021B	127065
890-9241-A-8-D MSD	Matrix Spike Duplicate	Total/NA	Solid	8021B	127065

Prep Batch: 127065

Lab Sample ID	Client Sample ID	Prep Type	Matrix	Method	Prep Batch
880-66089-1	H-1 (0-0.5')	Total/NA	Solid	5035	
880-66089-2	H-2 (0-0.5')	Total/NA	Solid	5035	
880-66089-3	H-3 (0-0.5')	Total/NA	Solid	5035	
880-66089-4	H-4 (0-0.5')	Total/NA	Solid	5035	
MB 880-127065/5-A	Method Blank	Total/NA	Solid	5035	
LCS 880-127065/1-A	Lab Control Sample	Total/NA	Solid	5035	
LCSD 880-127065/2-A	Lab Control Sample Dup	Total/NA	Solid	5035	
890-9241-A-8-C MS	Matrix Spike	Total/NA	Solid	5035	
890-9241-A-8-D MSD	Matrix Spike Duplicate	Total/NA	Solid	5035	

Analysis Batch: 127295

Lab Sample ID	Client Sample ID	Prep Type	Matrix	Method	Prep Batch
880-66089-1	H-1 (0-0.5')	Total/NA	Solid	Total BTEX	
880-66089-2	H-2 (0-0.5')	Total/NA	Solid	Total BTEX	
880-66089-3	H-3 (0-0.5')	Total/NA	Solid	Total BTEX	
880-66089-4	H-4 (0-0.5')	Total/NA	Solid	Total BTEX	

GC Semi VOA

Prep Batch: 126560

Lab Sample ID	Client Sample ID	Prep Type	Matrix	Method	Prep Batch
880-66089-1	H-1 (0-0.5')	Total/NA	Solid	8015NM Prep	
880-66089-2	H-2 (0-0.5')	Total/NA	Solid	8015NM Prep	
880-66089-3	H-3 (0-0.5')	Total/NA	Solid	8015NM Prep	
880-66089-4	H-4 (0-0.5')	Total/NA	Solid	8015NM Prep	
MB 880-126560/1-A	Method Blank	Total/NA	Solid	8015NM Prep	
LCS 880-126560/2-A	Lab Control Sample	Total/NA	Solid	8015NM Prep	
LCSD 880-126560/3-A	Lab Control Sample Dup	Total/NA	Solid	8015NM Prep	
880-66087-A-23-B MS	Matrix Spike	Total/NA	Solid	8015NM Prep	
880-66087-A-23-C MSD	Matrix Spike Duplicate	Total/NA	Solid	8015NM Prep	

Analysis Batch: 127326

Lab Sample ID	Client Sample ID	Prep Type	Matrix	Method	Prep Batch
880-66089-1	H-1 (0-0.5')	Total/NA	Solid	8015B NM	126560
880-66089-2	H-2 (0-0.5')	Total/NA	Solid	8015B NM	126560
880-66089-3	H-3 (0-0.5')	Total/NA	Solid	8015B NM	126560
880-66089-4	H-4 (0-0.5')	Total/NA	Solid	8015B NM	126560
MB 880-126560/1-A	Method Blank	Total/NA	Solid	8015B NM	126560
LCS 880-126560/2-A	Lab Control Sample	Total/NA	Solid	8015B NM	126560

Eurofins Midland

QC Association Summary

Client: Carmona Resources
Project/Site: Lea Unit West Flare (12.03.2025)

Job ID: 880-66089-1
SDG: Lea County New Mexico

GC Semi VOA (Continued)

Analysis Batch: 127326 (Continued)

Lab Sample ID	Client Sample ID	Prep Type	Matrix	Method	Prep Batch
LCSD 880-126560/3-A	Lab Control Sample Dup	Total/NA	Solid	8015B NM	126560
880-66087-A-23-B MS	Matrix Spike	Total/NA	Solid	8015B NM	126560
880-66087-A-23-C MSD	Matrix Spike Duplicate	Total/NA	Solid	8015B NM	126560

Analysis Batch: 127457

Lab Sample ID	Client Sample ID	Prep Type	Matrix	Method	Prep Batch
880-66089-1	H-1 (0-0.5')	Total/NA	Solid	8015 NM	
880-66089-2	H-2 (0-0.5')	Total/NA	Solid	8015 NM	
880-66089-3	H-3 (0-0.5')	Total/NA	Solid	8015 NM	
880-66089-4	H-4 (0-0.5')	Total/NA	Solid	8015 NM	

HPLC/IC

Leach Batch: 126807

Lab Sample ID	Client Sample ID	Prep Type	Matrix	Method	Prep Batch
880-66089-1	H-1 (0-0.5')	Soluble	Solid	DI Leach	
880-66089-2	H-2 (0-0.5')	Soluble	Solid	DI Leach	
880-66089-3	H-3 (0-0.5')	Soluble	Solid	DI Leach	
880-66089-4	H-4 (0-0.5')	Soluble	Solid	DI Leach	
MB 880-126807/1-A	Method Blank	Soluble	Solid	DI Leach	
LCS 880-126807/2-A	Lab Control Sample	Soluble	Solid	DI Leach	
LCSD 880-126807/3-A	Lab Control Sample Dup	Soluble	Solid	DI Leach	
880-66088-A-1-D MS	Matrix Spike	Soluble	Solid	DI Leach	
880-66088-A-1-E MSD	Matrix Spike Duplicate	Soluble	Solid	DI Leach	

Analysis Batch: 126831

Lab Sample ID	Client Sample ID	Prep Type	Matrix	Method	Prep Batch
880-66089-1	H-1 (0-0.5')	Soluble	Solid	300.0	126807
880-66089-2	H-2 (0-0.5')	Soluble	Solid	300.0	126807
880-66089-3	H-3 (0-0.5')	Soluble	Solid	300.0	126807
880-66089-4	H-4 (0-0.5')	Soluble	Solid	300.0	126807
MB 880-126807/1-A	Method Blank	Soluble	Solid	300.0	126807
LCS 880-126807/2-A	Lab Control Sample	Soluble	Solid	300.0	126807
LCSD 880-126807/3-A	Lab Control Sample Dup	Soluble	Solid	300.0	126807
880-66088-A-1-D MS	Matrix Spike	Soluble	Solid	300.0	126807
880-66088-A-1-E MSD	Matrix Spike Duplicate	Soluble	Solid	300.0	126807

Lab Chronicle

Client: Carmona Resources
Project/Site: Lea Unit West Flare (12.03.2025)

Job ID: 880-66089-1
SDG: Lea County New Mexico

Client Sample ID: H-1 (0-0.5')

Lab Sample ID: 880-66089-1

Date Collected: 12/12/25 00:00

Matrix: Solid

Date Received: 12/12/25 13:26

Prep Type	Batch Type	Batch Method	Run	Dil Factor	Initial Amount	Final Amount	Batch Number	Prepared or Analyzed	Analyst	Lab
Total/NA	Prep	5035			5.00 g	5 mL	127065	12/18/25 10:14	MNR	EET MID
Total/NA	Analysis	8021B		1	5 mL	5 mL	127051	12/18/25 18:25	MNR	EET MID
Total/NA	Analysis	Total BTEX		1			127295	12/18/25 18:25	SA	EET MID
Total/NA	Analysis	8015 NM		1			127457	12/20/25 17:39	SA	EET MID
Total/NA	Prep	8015NM Prep			10.05 g	10.00 mL	126560	12/12/25 15:34	EL	EET MID
Total/NA	Analysis	8015B NM		1	1 uL	1 uL	127326	12/20/25 17:39	FC	EET MID
Soluble	Leach	DI Leach			5.04 g	50 mL	126807	12/16/25 09:32	SA	EET MID
Soluble	Analysis	300.0		1			126831	12/16/25 17:27	CS	EET MID

Client Sample ID: H-2 (0-0.5')

Lab Sample ID: 880-66089-2

Date Collected: 12/12/25 00:00

Matrix: Solid

Date Received: 12/12/25 13:26

Prep Type	Batch Type	Batch Method	Run	Dil Factor	Initial Amount	Final Amount	Batch Number	Prepared or Analyzed	Analyst	Lab
Total/NA	Prep	5035			5.01 g	5 mL	127065	12/18/25 10:14	MNR	EET MID
Total/NA	Analysis	8021B		1	5 mL	5 mL	127051	12/18/25 18:45	MNR	EET MID
Total/NA	Analysis	Total BTEX		1			127295	12/18/25 18:45	SA	EET MID
Total/NA	Analysis	8015 NM		1			127457	12/20/25 17:54	SA	EET MID
Total/NA	Prep	8015NM Prep			10.01 g	10.00 mL	126560	12/12/25 15:34	EL	EET MID
Total/NA	Analysis	8015B NM		1	1 uL	1 uL	127326	12/20/25 17:54	FC	EET MID
Soluble	Leach	DI Leach			4.96 g	50 mL	126807	12/16/25 09:32	SA	EET MID
Soluble	Analysis	300.0		1			126831	12/16/25 17:32	CS	EET MID

Client Sample ID: H-3 (0-0.5')

Lab Sample ID: 880-66089-3

Date Collected: 12/12/25 00:00

Matrix: Solid

Date Received: 12/12/25 13:26

Prep Type	Batch Type	Batch Method	Run	Dil Factor	Initial Amount	Final Amount	Batch Number	Prepared or Analyzed	Analyst	Lab
Total/NA	Prep	5035			4.98 g	5 mL	127065	12/18/25 10:14	MNR	EET MID
Total/NA	Analysis	8021B		1	5 mL	5 mL	127051	12/18/25 19:06	MNR	EET MID
Total/NA	Analysis	Total BTEX		1			127295	12/18/25 19:06	SA	EET MID
Total/NA	Analysis	8015 NM		1			127457	12/20/25 18:09	SA	EET MID
Total/NA	Prep	8015NM Prep			9.97 g	10.00 mL	126560	12/12/25 15:34	EL	EET MID
Total/NA	Analysis	8015B NM		1	1 uL	1 uL	127326	12/20/25 18:09	FC	EET MID
Soluble	Leach	DI Leach			5.03 g	50 mL	126807	12/16/25 09:32	SA	EET MID
Soluble	Analysis	300.0		1			126831	12/16/25 17:38	CS	EET MID

Client Sample ID: H-4 (0-0.5')

Lab Sample ID: 880-66089-4

Date Collected: 12/12/25 00:00

Matrix: Solid

Date Received: 12/12/25 13:26

Prep Type	Batch Type	Batch Method	Run	Dil Factor	Initial Amount	Final Amount	Batch Number	Prepared or Analyzed	Analyst	Lab
Total/NA	Prep	5035			4.95 g	5 mL	127065	12/18/25 10:14	MNR	EET MID
Total/NA	Analysis	8021B		1	5 mL	5 mL	127051	12/18/25 19:26	MNR	EET MID
Total/NA	Analysis	Total BTEX		1			127295	12/18/25 19:26	SA	EET MID

Eurofins Midland

Lab Chronicle

Client: Carmona Resources
Project/Site: Lea Unit West Flare (12.03.2025)

Job ID: 880-66089-1
SDG: Lea County New Mexico

Client Sample ID: H-4 (0-0.5')
Date Collected: 12/12/25 00:00
Date Received: 12/12/25 13:26

Lab Sample ID: 880-66089-4
Matrix: Solid

Prep Type	Batch Type	Batch Method	Run	Dil Factor	Initial Amount	Final Amount	Batch Number	Prepared or Analyzed	Analyst	Lab
Total/NA	Analysis	8015 NM		1			127457	12/20/25 18:39	SA	EET MID
Total/NA	Prep	8015NM Prep			9.98 g	10.00 mL	126560	12/12/25 15:34	EL	EET MID
Total/NA	Analysis	8015B NM		1	1 uL	1 uL	127326	12/20/25 18:39	FC	EET MID
Soluble	Leach	DI Leach			5.04 g	50 mL	126807	12/16/25 09:32	SA	EET MID
Soluble	Analysis	300.0		1			126831	12/16/25 17:43	CS	EET MID

Laboratory References:
EET MID = Eurofins Midland, 1211 W. Florida Ave, Midland, TX 79701, TEL (432)704-5440

- 1
- 2
- 3
- 4
- 5
- 6
- 7
- 8
- 9
- 10
- 11
- 12
- 13
- 14

Accreditation/Certification Summary

Client: Carmona Resources
Project/Site: Lea Unit West Flare (12.03.2025)

Job ID: 880-66089-1
SDG: Lea County New Mexico

Laboratory: Eurofins Midland

Unless otherwise noted, all analytes for this laboratory were covered under each accreditation/certification below.

Authority	Program	Identification Number	Expiration Date
Texas	NELAP	T104704400	06-30-26
The following analytes are included in this report, but the laboratory is not certified by the governing authority. This list may include analytes for which the agency does not offer certification.			
Analysis Method	Prep Method	Matrix	Analyte
8015 NM		Solid	Total TPH
Total BTEX		Solid	Total BTEX

Method Summary

Client: Carmona Resources
Project/Site: Lea Unit West Flare (12.03.2025)

Job ID: 880-66089-1
SDG: Lea County New Mexico

Method	Method Description	Protocol	Laboratory
8021B	Volatile Organic Compounds (GC)	SW846	EET MID
Total BTEX	Total BTEX Calculation	TAL SOP	EET MID
8015 NM	Diesel Range Organics (DRO) (GC)	SW846	EET MID
8015B NM	Diesel Range Organics (DRO) (GC)	SW846	EET MID
300.0	Anions, Ion Chromatography	EPA	EET MID
5035	Closed System Purge and Trap	SW846	EET MID
8015NM Prep	Microextraction	SW846	EET MID
DI Leach	Deionized Water Leaching Procedure	ASTM	EET MID

Protocol References:

ASTM = ASTM International

EPA = US Environmental Protection Agency

SW846 = "Test Methods For Evaluating Solid Waste, Physical/Chemical Methods", Third Edition, November 1986 And Its Updates.

TAL SOP = TestAmerica Laboratories, Standard Operating Procedure

Laboratory References:

EET MID = Eurofins Midland, 1211 W. Florida Ave, Midland, TX 79701, TEL (432)704-5440

Sample Summary

Client: Carmona Resources
Project/Site: Lea Unit West Flare (12.03.2025)

Job ID: 880-66089-1
SDG: Lea County New Mexico

Lab Sample ID	Client Sample ID	Matrix	Collected	Received	Sample Origin
880-66089-1	H-1 (0-0.5')	Solid	12/12/25 00:00	12/12/25 13:26	Texas
880-66089-2	H-2 (0-0.5')	Solid	12/12/25 00:00	12/12/25 13:26	Texas
880-66089-3	H-3 (0-0.5')	Solid	12/12/25 00:00	12/12/25 13:26	Texas
880-66089-4	H-4 (0-0.5')	Solid	12/12/25 00:00	12/12/25 13:26	Texas

- 1
- 2
- 3
- 4
- 5
- 6
- 7
- 8
- 9
- 10
- 11
- 12
- 13
- 14

Chain of Custody



880-66089 Chain of Custody

Page 1 of 1

Project Manager:	Ashton Thielke	Bill to: (if different)	Laci Luig
Company Name:	Carmona Resources	Company Name:	Cimarex Energy
Address:	310 W Wall St Ste 500	Address:	600 N Marientfield St, Suite 600
City, State ZIP:	Midland, TX 79701	City, State ZIP:	Midland, TX 79701
Phone:	432-813-8988	Email:	laci.luig@coterra.com & ashton.thielke@coterra.com

Work Order Comments	
Program: UST/PST	PRP <input type="checkbox"/> Rowfields <input type="checkbox"/> JRC <input type="checkbox"/> perfund <input type="checkbox"/>
State of Project:	
Reporting Level II	<input type="checkbox"/> Level III <input type="checkbox"/> ST/UST <input type="checkbox"/> RRP <input type="checkbox"/> Level IV <input type="checkbox"/>
Deliverables: EDD	<input type="checkbox"/> ADAPT <input type="checkbox"/> Other:

Project Name:	Lea Unit West Flare (12/03/2025)	Turn Around	<input checked="" type="checkbox"/> Routine <input type="checkbox"/> Rush	Pres. Code	ANALYSIS REQUEST												Preservative Codes			
Project Number:	3084																	None: NO	DI Water: H ₂ O	
Project Location:	Lea County, New Mexico	Due Date:	Standard TAT															Cool: Cool	MeOH: Me	
Sampler's Name:	JDC																	HCL: HC	HNO ₃ : HN	
PO #:																		H ₂ SO ₄ : H ₂	NaOH: Na	
SAMPLE RECEIPT	Temp Blank: Yes <input checked="" type="checkbox"/> No <input type="checkbox"/>	Thermometer ID:	Wet Ice: Yes <input checked="" type="checkbox"/> No <input type="checkbox"/>	Parameters														H ₃ PO ₄ : HP		
Received Intact:	Yes <input checked="" type="checkbox"/> No <input type="checkbox"/>	Correction Factor:		BTEX 8021B														NaHSO ₄ : NABIS		
Cooler Custody Seals:	Yes <input checked="" type="checkbox"/> No <input type="checkbox"/>	Temperature Reading:	3.4	TPH 8015M (GRO + DRO + MRO)														Na ₂ S ₂ O ₃ : NaSO ₃		
Sample Custody Seals:	Yes <input checked="" type="checkbox"/> No <input type="checkbox"/>	Corrected Temperature:	3.5	Chloride 300.0														Zn Acetate+NaOH: Zn		
Total Containers:																		NaOH+Ascorbic Acid: SPC		
Sample Identification	Date	Time	Soil	Water	Grab/Comp	# of Cont												Sample Comments		
H-1 (0-0.5')	12/12/2025		X		Grab	1	X	X	X											
H-2 (0-0.5')	12/12/2025		X		Grab	1	X	X	X											
H-3 (0-0.5')	12/12/2025		X		Grab	1	X	X	X											
H-4 (0-0.5')	12/12/2025		X		Grab	1	X	X	X											

Comments:

Relinquished by: (Signature)	Date/Time	Received by: (Signature)	Date/Time
<i>[Signature]</i>	12/12/25 1326	<i>[Signature]</i>	12/12/25 1326

Login Sample Receipt Checklist

Client: Carmona Resources

Job Number: 880-66089-1
SDG Number: Lea County New Mexico

Login Number: 66089

List Number: 1

Creator: Juarez, Leticia

List Source: Eurofins Midland

Question	Answer	Comment
The cooler's custody seal, if present, is intact.	N/A	
Sample custody seals, if present, are intact.	N/A	
The cooler or samples do not appear to have been compromised or tampered with.	True	
Samples were received on ice.	True	
Cooler Temperature is acceptable.	True	
Cooler Temperature is recorded.	True	
COC is present	True	
COC is filled out in ink and legible.	True	
COC is filled out with all pertinent information	True	
Is the Field Sampler's name present on COC?	True	
There are no discrepancies between the containers received and the COC.	True	
Samples are received within Holding Time (excluding tests with immediate HTs)	True	
Sample containers have legible labels.	True	
Containers are not broken or leaking.	True	
Sample collection date/times are provided.	True	
Appropriate sample containers are used.	True	
Sample bottles are completely filled.	True	
Sample Preservation Verified.	N/A	
There is sufficient vol. for all requested analyses, incl. any requested MS/MSDs	True	
Containers requiring zero headspace have no headspace or bubble is <6mm (1/4").	N/A	

From: [Ashton Thielke](#)
To: [Wells, Shelly, EMNRD](#)
Subject: [EXTERNAL] RE: nAPP2533752426 Lea Unit West Flare
Date: Thursday, January 15, 2026 4:08:30 PM

CAUTION: This email originated outside of our organization. Exercise caution prior to clicking on links or opening attachments.

Good afternoon Shelly,

Thank you for reaching out.

Coincidentally, this well pad was being reclaimed when this flare had the release/fire. The area was scraped under the flare and then material off to the side (east H-1) was utilized to backfill the shallow surface scrape. (Since there was excess caliche from the surface reclamation of that well pad.

We are not sure if this 100% constitutes a variance request as we are just stating that the material used for backfill was laboratory tested during confirmation sampling and represents the sample "H-1". We have included this in the past on other reports where we have utilized backfill material already onsite or from the well pad that is already represented by a horizontal delineation sample. This is in place of a totally separate analyzed sample that we sometimes utilize for backfill when backfilling from a pit offsite.

The backfill material utilized did not have any contamination as shown in Table 1 and appendix E.

I hope that helps!

Thanks!



Ashton Thielke | PBU - Environmental Consultant

T: 432.813.8988 | M: 281.753.5659 | Ashton.Thielke@coterra.com | www.coterra.com
Coterra Energy Inc. | 6001 Deauville Blvd., Suite 300N | Midland, TX 79706

Coterra Energy Inc. is the result of the merger of Cimarex Energy Co. and Cabot Oil & Gas Corporation on October 1, 2021.

From: Wells,, EMNRD <Shelly.Wells@emnrd.nm.gov>
Sent: Thursday, January 15, 2026 4:33 PM
To: Ashton Thielke <Ashton.Thielke@coterra.com>
Subject: [EXTERNAL] nAPP2533752426 Lea Unit West Flare

WARNING: This email originated from outside of Coterra Energy. Do not click links or open attachments unless you recognize the sender, are expecting the content and know it is safe.

Hi Ashton,

I am reviewing the submitted closure report for nAPP2533752426 Lea Unit West Flare and have questions for you regarding the following: “Additionally, due to the shallow nature of the surface scrape, a variance to NMAC 19.15.29.12.D.2 is requested in relation to backfilling the excavated (scraped) area. Excess material from the well pad was pushed up to add additional caliche to the access road. Sample point “H-1” represents the material that was used to backfill the scraped area.”

So after you did the surface scrape and that material was hauled off to disposal, are you saying you used pad material from under the flare to fill in the access road? If so, was this after the sampling occurred? Technically you have not submitted a variance request per the rule as variances are to include the following per [19.15.29.14](#) NMAC: (1) a detailed statement explaining the need for a variance; and (2) a detailed written demonstration that the variance will provide equal or better protection of fresh water, public health and the environment.

Kind regards,

Shelly

Shelly Wells * Senior Environmental Scientist
Environmental Bureau
EMNRD-Oil Conservation Division
1220 S. St. Francis Drive|Santa Fe, NM 87505
(505)469-7520 Shelly.Wells@emnrd.nm.gov
<http://www.emnrd.state.nm.us/OCD/>

This message may contain confidential and/or privileged information. If you are not the addressee or authorized to receive this for the addressee, you must not use, copy, disclose or take any action based on this message or any information herein. If you have received this message in error, please advise the sender immediately by reply e-mail and delete this message.

Sante Fe Main Office
Phone: (505) 476-3441

General Information
Phone: (505) 629-6116

Online Phone Directory
<https://www.emnrd.nm.gov/ocd/contact-us>

State of New Mexico
Energy, Minerals and Natural Resources
Oil Conservation Division
1220 S. St Francis Dr.
Santa Fe, NM 87505

QUESTIONS

Action 541297

QUESTIONS

Operator: Avant Operating, LLC 6001 Deauville Blvd Midland, TX 79706	OGRID: 330396
	Action Number: 541297
	Action Type: [C-141] Remediation Closure Request C-141 (C-141-v-Closure)

QUESTIONS

Prerequisites	
Incident ID (n#)	nAPP2533752426
Incident Name	NAPP2533752426 LEA UNIT WEST FLARE @ D-12-20S-34E
Incident Type	Fire
Incident Status	Remediation Closure Report Received

Location of Release Source

Please answer all the questions in this group.

Site Name	Lea Unit West Flare
Date Release Discovered	12/03/2025
Surface Owner	Federal

Incident Details

Please answer all the questions in this group.

Incident Type	Fire
Did this release result in a fire or is the result of a fire	Yes
Did this release result in any injuries	No
Has this release reached or does it have a reasonable probability of reaching a watercourse	No
Has this release endangered or does it have a reasonable probability of endangering public health	No
Has this release substantially damaged or will it substantially damage property or the environment	No
Is this release of a volume that is or may with reasonable probability be detrimental to fresh water	No

Nature and Volume of Release

Material(s) released, please answer all that apply below. Any calculations or specific justifications for the volumes provided should be attached to the follow-up C-141 submission.

Crude Oil Released (bbls) Details	Cause: Human Error Other (Specify) Crude Oil Released: 0 BBL Recovered: 0 BBL Lost: 0 BBL.
Produced Water Released (bbls) Details	Not answered.
Is the concentration of chloride in the produced water >10,000 mg/l	No
Condensate Released (bbls) Details	Not answered.
Natural Gas Vented (Mcf) Details	Not answered.
Natural Gas Flared (Mcf) Details	Not answered.
Other Released Details	Not answered.
Are there additional details for the questions above (i.e. any answer containing Other, Specify, Unknown, and/or Fire, or any negative lost amounts)	We had a reportable fire at the Lea Unit West Flare due to fluid carrying over to the flare. It was discovered that a valve on the air compressor supply line was closed, resulting in fluid carrying over from the separator to the flare. The fire was extinguished by the Hobbs Fire Department. Minor damage occurred to the flare and no injuries or impact to the environment resulted from the incident. We will be scheduling an assessment and remediation of the affected area in the coming weeks. Released: 0.01 barrels of crude oil Recovered: 0 barrels

Sante Fe Main Office
Phone: (505) 476-3441

General Information
Phone: (505) 629-6116

Online Phone Directory
<https://www.emnrd.nm.gov/ocd/contact-us>

State of New Mexico
Energy, Minerals and Natural Resources
Oil Conservation Division
1220 S. St Francis Dr.
Santa Fe, NM 87505

QUESTIONS, Page 2

Action 541297

QUESTIONS (continued)

Operator: Avant Operating, LLC 6001 Deauville Blvd Midland, TX 79706	OGRID: 330396
	Action Number: 541297
	Action Type: [C-141] Remediation Closure Request C-141 (C-141-v-Closure)

QUESTIONS

Nature and Volume of Release (continued)	
Is this a gas only submission (i.e. only significant Mcf values reported)	More info needed to determine if this will be treated as a "gas only" report.
Was this a major release as defined by Subsection A of 19.15.29.7 NMAC	Yes
Reasons why this would be considered a submission for a notification of a major release	From paragraph A. "Major release" determine using: (2) an unauthorized release of a volume that: (a) results in a fire or is the result of a fire.
<i>With the implementation of the 19.15.27 NMAC (05/25/2021), venting and/or flaring of natural gas (i.e. gas only) are to be submitted on the C-129 form.</i>	

Initial Response

The responsible party must undertake the following actions immediately unless they could create a safety hazard that would result in injury.

The source of the release has been stopped	True
The impacted area has been secured to protect human health and the environment	True
Released materials have been contained via the use of berms or dikes, absorbent pads, or other containment devices	True
All free liquids and recoverable materials have been removed and managed appropriately	True
If all the actions described above have not been undertaken, explain why	Not answered.

Per Paragraph (4) of Subsection B of 19.15.29.8 NMAC the responsible party may commence remediation immediately after discovery of a release. If remediation has begun, please prepare and attach a narrative of actions to date in the follow-up C-141 submission. If remedial efforts have been successfully completed or if the release occurred within a lined containment area (see Subparagraph (a) of Paragraph (5) of Subsection A of 19.15.29.11 NMAC), please prepare and attach all information needed for closure evaluation in the follow-up C-141 submission.

I hereby certify that the information given above is true and complete to the best of my knowledge and understand that pursuant to OCD rules and regulations all operators are required to report and/or file certain release notifications and perform corrective actions for releases which may endanger public health or the environment. The acceptance of a C-141 report by the OCD does not relieve the operator of liability should their operations have failed to adequately investigate and remediate contamination that pose a threat to groundwater, surface water, human health or the environment. In addition, OCD acceptance of a C-141 report does not relieve the operator of responsibility for compliance with any other federal, state, or local laws and/or regulations.

I hereby agree and sign off to the above statement	Name: Ashton Thielke Title: EHS Specialist Email: Ashton.Thielke@coterra.com Date: 01/08/2026
--	--

Sante Fe Main Office
Phone: (505) 476-3441

General Information
Phone: (505) 629-6116

Online Phone Directory
<https://www.emnrd.nm.gov/ocd/contact-us>

State of New Mexico
Energy, Minerals and Natural Resources
Oil Conservation Division
1220 S. St Francis Dr.
Santa Fe, NM 87505

QUESTIONS, Page 3

Action 541297

QUESTIONS (continued)

Operator: Avant Operating, LLC 6001 Deauville Blvd Midland, TX 79706	OGRID: 330396
	Action Number: 541297
	Action Type: [C-141] Remediation Closure Request C-141 (C-141-v-Closure)

QUESTIONS**Site Characterization**

Please answer all the questions in this group (only required when seeking remediation plan approval and beyond). This information must be provided to the appropriate district office no later than 90 days after the release discovery date.

What is the shallowest depth to groundwater beneath the area affected by the release in feet below ground surface (ft bgs)	Between 100 and 500 (ft.)
What method was used to determine the depth to ground water	Direct Measurement
Did this release impact groundwater or surface water	No
What is the minimum distance, between the closest lateral extents of the release and the following surface areas:	
A continuously flowing watercourse or any other significant watercourse	Greater than 5 (mi.)
Any lakebed, sinkhole, or playa lake (measured from the ordinary high-water mark)	Between 1 and 5 (mi.)
An occupied permanent residence, school, hospital, institution, or church	Between 1 and 5 (mi.)
A spring or a private domestic fresh water well used by less than five households for domestic or stock watering purposes	Between 1 and 5 (mi.)
Any other fresh water well or spring	Between 1 and 5 (mi.)
Incorporated municipal boundaries or a defined municipal fresh water well field	Greater than 5 (mi.)
A wetland	Between 1 and 5 (mi.)
A subsurface mine	Greater than 5 (mi.)
An (non-karst) unstable area	Greater than 5 (mi.)
Categorize the risk of this well / site being in a karst geology	Low
A 100-year floodplain	Between 1 and 5 (mi.)
Did the release impact areas not on an exploration, development, production, or storage site	No

Remediation Plan

Please answer all the questions that apply or are indicated. This information must be provided to the appropriate district office no later than 90 days after the release discovery date.

Requesting a remediation plan approval with this submission	Yes
<i>Attach a comprehensive report demonstrating the lateral and vertical extents of soil contamination associated with the release have been determined, pursuant to 19.15.29.11 NMAC and 19.15.29.13 NMAC.</i>	
Have the lateral and vertical extents of contamination been fully delineated	Yes
Was this release entirely contained within a lined containment area	No

Soil Contamination Sampling: (Provide the highest observable value for each, in milligrams per kilograms.)

Chloride (EPA 300.0 or SM4500 Cl B)	343
TPH (GRO+DRO+MRO) (EPA SW-846 Method 8015M)	85.7
GRO+DRO (EPA SW-846 Method 8015M)	85.7
BTEX (EPA SW-846 Method 8021B or 8260B)	0
Benzene (EPA SW-846 Method 8021B or 8260B)	0

Per Subsection B of 19.15.29.11 NMAC unless the site characterization report includes completed efforts at remediation, the report must include a proposed remediation plan in accordance with 19.15.29.12 NMAC, which includes the anticipated timelines for beginning and completing the remediation.

On what estimated date will the remediation commence	12/03/2025
On what date will (or did) the final sampling or liner inspection occur	12/12/2025
On what date will (or was) the remediation complete(d)	12/12/2025
What is the estimated surface area (in square feet) that will be reclaimed	0
What is the estimated volume (in cubic yards) that will be reclaimed	0
What is the estimated surface area (in square feet) that will be remediated	568
What is the estimated volume (in cubic yards) that will be remediated	6

These estimated dates and measurements are recognized to be the best guess or calculation at the time of submission and may (be) change(d) over time as more remediation efforts are completed.

The OCD recognizes that proposed remediation measures may have to be minimally adjusted in accordance with the physical realities encountered during remediation. If the responsible party has any need to significantly deviate from the remediation plan proposed, then it should consult with the division to determine if another remediation plan submission is required.

Sante Fe Main Office
Phone: (505) 476-3441

General Information
Phone: (505) 629-6116

Online Phone Directory
<https://www.emnrd.nm.gov/ocd/contact-us>

State of New Mexico
Energy, Minerals and Natural Resources
Oil Conservation Division
1220 S. St Francis Dr.
Santa Fe, NM 87505

QUESTIONS, Page 4

Action 541297

QUESTIONS (continued)

Operator: Avant Operating, LLC 6001 Deauville Blvd Midland, TX 79706	OGRID: 330396
	Action Number: 541297
	Action Type: [C-141] Remediation Closure Request C-141 (C-141-v-Closure)

QUESTIONS

Remediation Plan (continued)	
<i>Please answer all the questions that apply or are indicated. This information must be provided to the appropriate district office no later than 90 days after the release discovery date.</i>	
This remediation will (or is expected to) utilize the following processes to remediate / reduce contaminants:	
<i>(Select all answers below that apply.)</i>	
(Ex Situ) Excavation and off-site disposal (i.e. dig and haul, hydrovac, etc.)	Yes
Which OCD approved facility will be used for off-site disposal	fEEM0112342028 LEA LAND LANDFILL
OR which OCD approved well (API) will be used for off-site disposal	Not answered.
OR is the off-site disposal site, to be used, out-of-state	Not answered.
OR is the off-site disposal site, to be used, an NMED facility	Not answered.
(Ex Situ) Excavation and on-site remediation (i.e. On-Site Land Farms)	Not answered.
(In Situ) Soil Vapor Extraction	Not answered.
(In Situ) Chemical processing (i.e. Soil Shredding, Potassium Permanganate, etc.)	Not answered.
(In Situ) Biological processing (i.e. Microbes / Fertilizer, etc.)	Not answered.
(In Situ) Physical processing (i.e. Soil Washing, Gypsum, Disking, etc.)	Not answered.
Ground Water Abatement pursuant to 19.15.30 NMAC	Not answered.
OTHER (Non-listed remedial process)	Not answered.
<i>Per Subsection B of 19.15.29.11 NMAC unless the site characterization report includes completed efforts at remediation, the report must include a proposed remediation plan in accordance with 19.15.29.12 NMAC, which includes the anticipated timelines for beginning and completing the remediation.</i>	
I hereby certify that the information given above is true and complete to the best of my knowledge and understand that pursuant to OCD rules and regulations all operators are required to report and/or file certain release notifications and perform corrective actions for releases which may endanger public health or the environment. The acceptance of a C-141 report by the OCD does not relieve the operator of liability should their operations have failed to adequately investigate and remediate contamination that pose a threat to groundwater, surface water, human health or the environment. In addition, OCD acceptance of a C-141 report does not relieve the operator of responsibility for compliance with any other federal, state, or local laws and/or regulations.	
I hereby agree and sign off to the above statement	Name: Ashton Thielke Title: EHS Specialist Email: Ashton.Thielke@coterra.com Date: 01/08/2026
<i>The OCD recognizes that proposed remediation measures may have to be minimally adjusted in accordance with the physical realities encountered during remediation. If the responsible party has any need to significantly deviate from the remediation plan proposed, then it should consult with the division to determine if another remediation plan submission is required.</i>	

Sante Fe Main Office
Phone: (505) 476-3441

General Information
Phone: (505) 629-6116

Online Phone Directory
<https://www.emnrd.nm.gov/ocd/contact-us>

State of New Mexico
Energy, Minerals and Natural Resources
Oil Conservation Division
1220 S. St Francis Dr.
Santa Fe, NM 87505

QUESTIONS, Page 5

Action 541297

QUESTIONS (continued)

Operator: Avant Operating, LLC 6001 Deauville Blvd Midland, TX 79706	OGRID: 330396
	Action Number: 541297
	Action Type: [C-141] Remediation Closure Request C-141 (C-141-v-Closure)

QUESTIONS

Deferral Requests Only	
<i>Only answer the questions in this group if seeking a deferral upon approval this submission. Each of the following items must be confirmed as part of any request for deferral of remediation.</i>	
Requesting a deferral of the remediation closure due date with the approval of this submission	No

Sante Fe Main Office
Phone: (505) 476-3441

General Information
Phone: (505) 629-6116

Online Phone Directory
<https://www.emnrd.nm.gov/ocd/contact-us>

State of New Mexico
Energy, Minerals and Natural Resources
Oil Conservation Division
1220 S. St Francis Dr.
Santa Fe, NM 87505

QUESTIONS, Page 6

Action 541297

QUESTIONS (continued)

Operator: Avant Operating, LLC 6001 Deauville Blvd Midland, TX 79706	OGRID: 330396
	Action Number: 541297
	Action Type: [C-141] Remediation Closure Request C-141 (C-141-v-Closure)

QUESTIONS

Sampling Event Information	
Last sampling notification (C-141N) recorded	532109
Sampling date pursuant to Subparagraph (a) of Paragraph (1) of Subsection D of 19.15.29.12 NMAC	12/12/2025
What was the (estimated) number of samples that were to be gathered	10
What was the sampling surface area in square feet	650

Remediation Closure Request	
<i>Only answer the questions in this group if seeking remediation closure for this release because all remediation steps have been completed.</i>	
Requesting a remediation closure approval with this submission	Yes
Have the lateral and vertical extents of contamination been fully delineated	Yes
Was this release entirely contained within a lined containment area	No
All areas reasonably needed for production or subsequent drilling operations have been stabilized, returned to the sites existing grade, and have a soil cover that prevents ponding of water, minimizing dust and erosion	Yes
What was the total surface area (in square feet) remediated	568
What was the total volume (cubic yards) remediated	6
All areas not reasonably needed for production or subsequent drilling operations have been reclaimed to contain a minimum of four feet of non-waste contain earthen material with concentrations less than 600 mg/kg chlorides, 100 mg/kg TPH, 50 mg/kg BTEX, and 10 mg/kg Benzene	Yes
What was the total surface area (in square feet) reclaimed	0
What was the total volume (in cubic yards) reclaimed	0
Summarize any additional remediation activities not included by answers (above)	Flare fire occurred followed by an emergency surface scrape of the affected area. Composite confirmation surface samples were collected to determine that the surface scrape removed all impact from the affected area.
<i>The responsible party must attach information demonstrating they have complied with all applicable closure requirements and any conditions or directives of the OCD. This demonstration should be in the form of a comprehensive report (in .pdf format) including a scaled site map, sampling diagrams, relevant field notes, photographs of any excavation prior to backfilling, laboratory data including chain of custody documents of final sampling, and a narrative of the remedial activities. Refer to 19.15.29.12 NMAC.</i>	
I hereby certify that the information given above is true and complete to the best of my knowledge and understand that pursuant to OCD rules and regulations all operators are required to report and/or file certain release notifications and perform corrective actions for releases which may endanger public health or the environment. The acceptance of a C-141 report by the OCD does not relieve the operator of liability should their operations have failed to adequately investigate and remediate contamination that pose a threat to groundwater, surface water, human health or the environment. In addition, OCD acceptance of a C-141 report does not relieve the operator of responsibility for compliance with any other federal, state, or local laws and/or regulations. The responsible party acknowledges they must substantially restore, reclaim, and re-vegetate the impacted surface area to the conditions that existed prior to the release or their final land use in accordance with 19.15.29.13 NMAC including notification to the OCD when reclamation and re-vegetation are complete.	
I hereby agree and sign off to the above statement	Name: Ashton Thielke Title: EHS Specialist Email: Ashton.Thielke@coterra.com Date: 01/08/2026

Sante Fe Main Office
Phone: (505) 476-3441

General Information
Phone: (505) 629-6116

Online Phone Directory
<https://www.emnrd.nm.gov/ocd/contact-us>

State of New Mexico
Energy, Minerals and Natural Resources
Oil Conservation Division
1220 S. St Francis Dr.
Santa Fe, NM 87505

QUESTIONS, Page 7

Action 541297

QUESTIONS (continued)

Operator: Avant Operating, LLC 6001 Deauville Blvd Midland, TX 79706	OGRID: 330396
	Action Number: 541297
	Action Type: [C-141] Remediation Closure Request C-141 (C-141-v-Closure)

QUESTIONS

Reclamation Report	
Only answer the questions in this group if all reclamation steps have been completed.	
Requesting a reclamation approval with this submission	No

Sante Fe Main Office
Phone: (505) 476-3441

General Information
Phone: (505) 629-6116

Online Phone Directory
<https://www.emnrd.nm.gov/ocd/contact-us>

State of New Mexico
Energy, Minerals and Natural Resources
Oil Conservation Division
1220 S. St Francis Dr.
Santa Fe, NM 87505

CONDITIONS

Action 541297

CONDITIONS

Operator: Avant Operating, LLC 6001 Deauville Blvd Midland, TX 79706	OGRID: 330396
	Action Number: 541297
	Action Type: [C-141] Remediation Closure Request C-141 (C-141-v-Closure)

CONDITIONS

Created By	Condition	Condition Date
scwells	None	1/16/2026