

November 11, 2025

New Mexico Oil Conservation Division

New Mexico Energy, Minerals, and Natural Resources Department
1220 South St. Francis Drive
Santa Fe, New Mexico 87505



Re: Closure Report
Thistle Unit 22 CTB 2
Incident Number nAPP2515351849
Lea County, New Mexico

To Whom It May Concern:

Safety & Environmental Solutions (SESI), on behalf of Devon Energy Production Company, LP (Devon), has prepared this Closure Report to document assessment and soil sampling activities at the Thistle Unit 22 CTB 2 (Site) in Unit A, Section 22, Township 23 South, Range 33 East, in Lea County, New Mexico (Figure 1). The Site (32.295136,-103.554495 NAD83) is associated with oil and gas exploration and production operations on Federal Land managed by the Bureau of Land Management (BLM). The purpose of the Site assessment and soil sampling activities was to assess the presence or absence of impacts to soil following a release of produced water at the Site. Based on field observations, field screening activities, and soil sample laboratory analytical results, Devon is submitting this Closure Report, describing Site assessment, delineation and excavation activities that have occurred to date for Incident Number nAPP2515351849.

SITE DESCRIPTION AND RELEASE SUMMARY

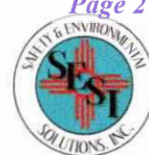
The Site is located in is Unit Letter A, Section 22, Township 23 South and Range 33 East in Lea County, New Mexico. (32.295136,-103.554495 NAD83) and is associated with oil and gas exploration and production on Federal Land managed by the Bureau of Land Management (BLM).

Incident C-141 received on 06/04/2025 for release on 06/01/2025. The cause of the release was reported as equipment failure: "Fitting failed on water transfer pump. Majority of fluids confined to secondary containment, overspray allowed approximately 3 bbls to impact pad surface." Produced Water | Released: 12 BBL | Recovered: 9 BBL | Lost: 3 BBL.

SITE CHARACTERIZATION and CLOSURE CRITERIA

The Site was characterized to assess the applicability of Table I Closure Criteria for Soils Impacted by a Release, as specified in 19.15.29 NMAC. Results of the desktop review are summarized below; receptors are identified in Figure 1, with well records provided in Appendix A.

- Surface elevation is approximately 3710 feet above mean sea level (msl).
- The nearest continuously flowing water course (Pecos River) is located 25 miles to the west of the site.
- The nearest wetland (riverine) is located 0.64 miles to the east of the site.
- The nearest freshwater pond habitat is located 1.01 miles east of the site.
- The nearest lakebed, sinkhole, or playa lake (Bell Lake) is located about 4.2 miles south southeast of the site.
- The nearest subsurface mine >20 miles west northwest, associated with Mosaic Potash Carlsbad.
- According to the FEMA National Flood Hazard Layer (NFHL) FIRMette map, the Site is located entirely within Zone D (Area of Undetermined Flood Hazard). The property is not located within a 100-year floodplain, and no regulatory floodways are mapped at or immediately adjacent to the Site.
- USGS karst occurrence potential data designates the area as low risk.



Devon Energy Production Company, LP
Thistle Unit 22 CTB 2
Closure Report

- According to the United States Department of Agriculture Natural Resources Conservation Service, the soil in this area is classified as Pyote and Maljamar fine sands, with 0 to 3 percent slopes. These soils are derived from sandy eolian deposits formed on plains and rises. The Pyote series consists of fine sand to fine sandy loam with no restrictive features to a depth of over 80 inches and is classified as well drained with negligible runoff. The Maljamar series includes a petrocalcic horizon at 40–60 inches and also drains well with very low runoff potential. Both soils exhibit low available water supply and are rated as non-hydric. The area lies within Ecological Site R070BD003NM (Loamy Sand). This location is not classified as prime farmland and has a high permeability with limited salinity, low gypsum content, and minimal risk of flooding or ponding.
- The site is located on the northern portion of the Delaware Basin margin in southeastern New Mexico and is underlain by Quaternary alluvial and eolian deposits. The Quaternary undifferentiated alluvial sediment consisting of sheetwash-transported silt, sand, and gravel. Surrounding areas include piedmont alluvial deposits and extensive Holocene eolian sand sheets, reflecting wind-dominated surface modification. Several nearby playa basins, including Bell Lake, mark closed local depressions where fine sediments accumulate. The landscape exhibits low relief and is shaped by episodic runoff and eolian processes.
- Groundwater was determined utilizing the New Mexico Office of the State Engineers (NMOSE) database for registered water wells. The closest registered Point of Diversion (POD), identified as C-04664-POD1, is located approximately 0.38 miles northwest of the release site at coordinates 32.30251, -103.37444 (SE NW SE, Section 15, Township 23 South, Range 33 East). This well was drilled by Devon Energy on September 7, 2022, to a depth of 55 feet below ground surface (bgs) using a hollow stem auger. No groundwater was encountered during drilling, and the well was classified as a dry hole.

Based on the results of the Site Characterization, groundwater in the area occurs at depths over 100 feet below ground surface (bgs). Therefore, pursuant to Table I Closure Criteria for Soils Impacted by a Release as specified in 19.15.29 NMAC, the following closure criteria apply to the Site:

- Benzene: 10 milligrams per kilogram (mg/kg)
- Benzene, toluene, ethylbenzene, and total xylenes (BTEX): 50 mg/kg
- Total petroleum hydrocarbons (TPH): 2,500 mg/kg
- Chloride: 10,000 mg/kg

SITE ASSESSMENT ACTIVITIES

On June 10, 2025, SESI personnel mobilized to the Thistle Unit 22 CTB 2 Site to evaluate the reported release in accordance with NMOCD Rule 19.15.29 NMAC. The assessment included review of Form C-141 data, visual inspection, and field screening. Sampling locations were mapped using a handheld GPS unit (see Figure 2). Soil samples were collected and field tested for chloride contamination. A summary of the results are included in Table 1 of this report.

Field activities were completed in multiple phases:

- On June 10, 2025, twelve (12) delineation soil samples (SP-1 through SP-12) were collected from 0-1 ft bgs, and seven (7) horizontal soil samples (HP-1 through HP-7) and field screened for chloride concentrations.
- On July 30, 2025, following 48-hour notification to the NMOCD, twenty (20) confirmation samples were collected, packaged, and shipped under strict chain-of-custody to Envirotech Analytical Laboratory (Farmington, NM). Samples were analyzed for BTEX (EPA 8021B), TPH-GRO/DRO/ORO (EPA 8015M/D), and chloride (EPA 300.0).
- On August 26, 2025, a backfill sample was collected (BF-1-S), packaged, and shipped under strict chain-of-custody to Envirotech Analytical Laboratory (Farmington, NM). Samples were analyzed for BTEX (EPA 8021B), TPH-GRO/DRO/ORO (EPA 8015M/D), and chloride (EPA 300.0).



Devon Energy Production Company, LP
Thistle Unit 22 CTB 2
Closure Report

LINER INSPECTION

Following the release, fluids were largely contained within the lined secondary containment system. To facilitate a thorough integrity evaluation of the liner, fluids were removed from the containment area, and the impacted surfaces were pressure washed and allowed to dry prior to inspection.

On September 24, 2025, 48-hour advance notification of the liner inspections was submitted and approved. On September 26, 2025, SESI conducted liner inspection activities to evaluate liner integrity at the Site. SESI personnel performed a visual inspection and confirmed that the liner was intact, with no evidence of damage or loss of integrity, and operating as designed. A photographic log documenting liner conditions at the time of inspection is attached, along with a copy of the 48-hour advance notification of the liner inspection activities provided to the NMOCD.

CONCLUSION

Following the initial site assessment conducted on June 10, 2025, SESI determined that the impacted area at the Thistle Unit 22 CTB 2 site encompasses approximately 2475 square feet, with contamination extending to an average depth of six inches and localized areas reaching approximately one foot below ground surface. As a proactive measure, the proposed remediation approach was to excavate the identified impacted soils to a depth of one foot bgs. Approximately 92 cubic yards of excavated material were transported under manifest to an NMOCD-approved disposal facility for proper treatment or disposal.

Following excavation, 48-hour notification of confirmation sampling was submitted to the NMOCD on July 24, 2025, and on July 30, 2025, confirmation soil samples were collected from the base of the excavation (SP-1 through SP-13) and horizontally (HP-1 through HP-7). Samples were submitted to Envirotech Analytical Laboratories for analysis in accordance with NMOCD Table 1 parameters. Once laboratory results confirmed that regulatory closure criteria targets had been met, the excavation was backfilled with clean, compatible material and restored to existing grade in accordance with site specifications.

Based on the finding of the liner inspection, and the completion of remediation that meets Table 1 requirements. SESI on behalf of Devon Energy Production Company, LP requests closure approval for Incident nAPP2515351849.

If you have any questions or comments, please contact Leslie Mendenhall at (575) 973-5675 or lmendenhall@sesi-nm.com.

Sincerely,
Safety & Environmental Solutions, Inc.

Leslie Mendenhall

Leslie Mendenhall, Sr. VP of Environmental

Cc: Jim Raley, Devon
eco@nmslo.gov



**Devon Energy Production Company, LP
Thistle Unit 22 CTB 2
Closure Report**

Appendices:

Figure 1. Site Vicinity and Receptor Map

Figure 2. Soil Survey Map

Table 1. Site Delineation Field Sample Results

Table 2. Laboratory Analytical Report Summarized

Appendix A. Well Records & Logs

Appendix B. Photographic Log

Appendix C. Laboratory Analytical Reports & Chain of Custody Documentation

Appendix D. Liner Inspection Documentation

Appendix E. C-141 Forms and Correspondence

Devon Energy Production Company, LP
Thistle Unit 22 CTB 2
Closure Report

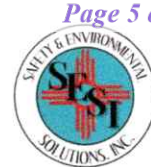


Figure 1. Site Vicinity and Receptor Map

Thistle Unit 22 CTB 2

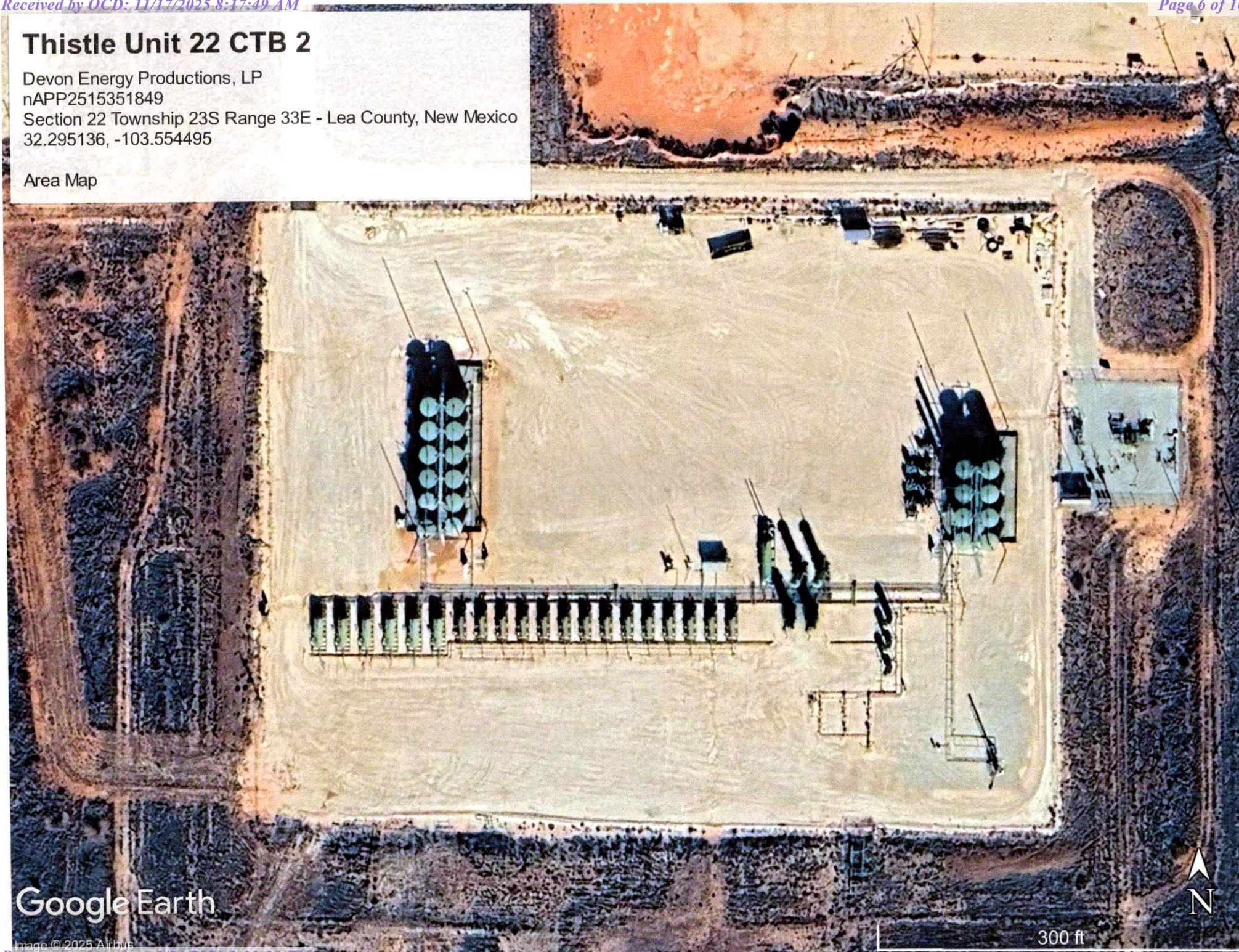
Devon Energy Productions, LP

nAPP2515351849

Section 22 Township 23S Range 33E - Lea County, New Mexico

32.295136, -103.554495

Area Map



Google Earth

Image © 2025 Airbus




Thistle Unit 22 CTB 2

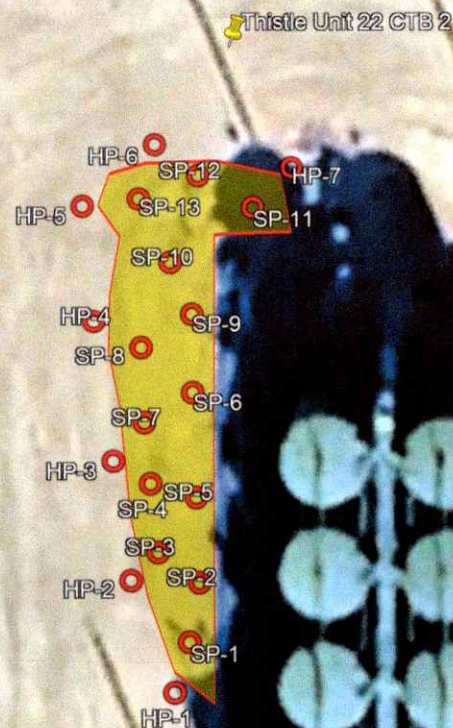
Devon Energy Productions, LP
nAPP2515351849

Section 22 Township 23S Range 33E - Lea County, New Mexico
32.295136, -103.554495

Sample Point Map

Legend

-  Affected Area
-  Sample Points
-  Thistle Unit 22 CTB 2

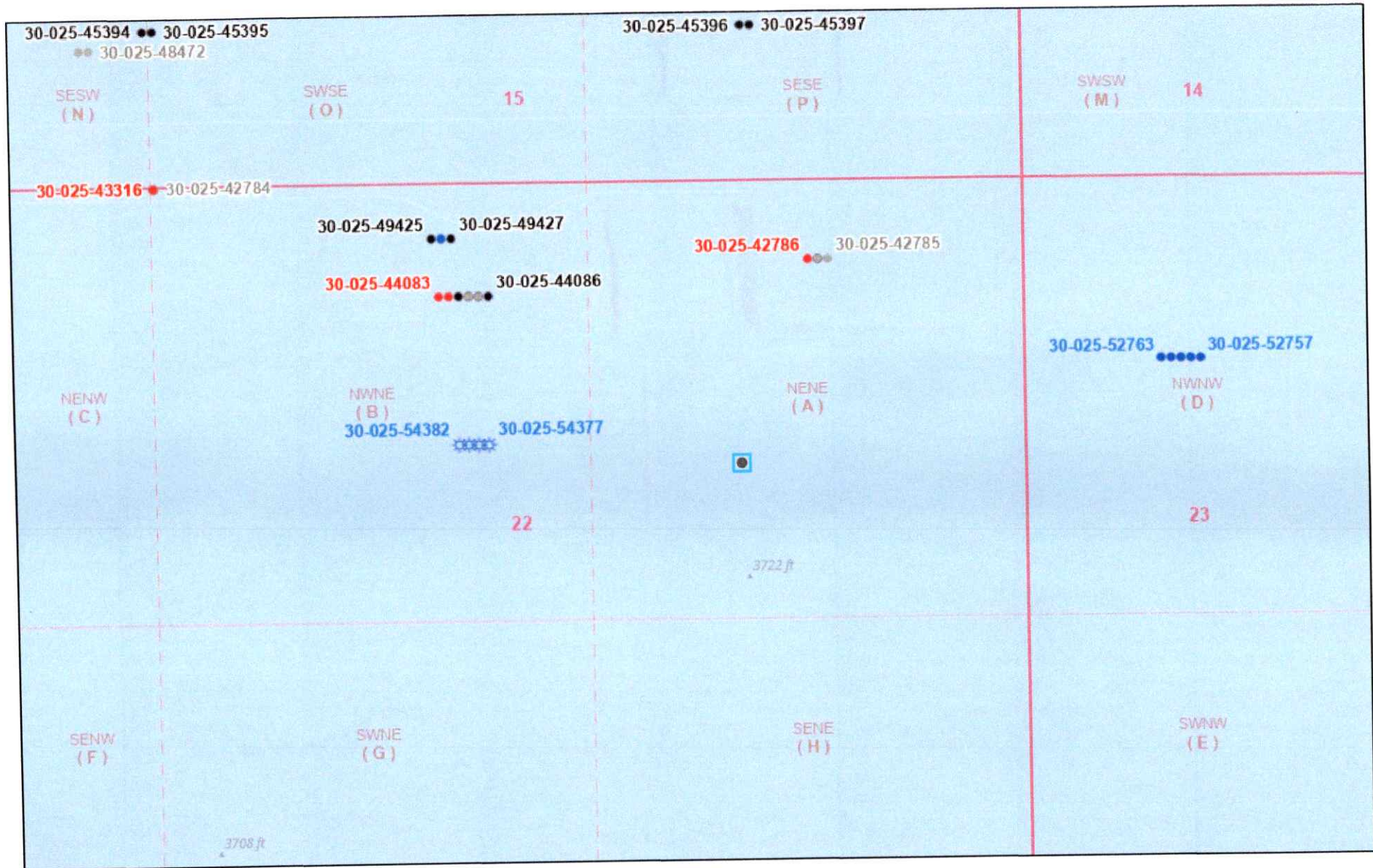


Google Earth



1000 ft

OCD Well Locations | Karst Map



11/14/2025, 3:31:15 PM

Wells - Large Scale



Gas, New



Oil, Active



Oil, Cancelled



Oil, New



Oil, Plugged

Karst Occurrence Potential



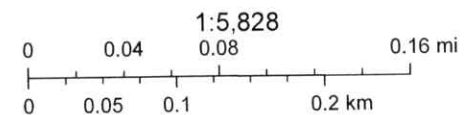
Low



PLSS Second Division



PLSS First Division



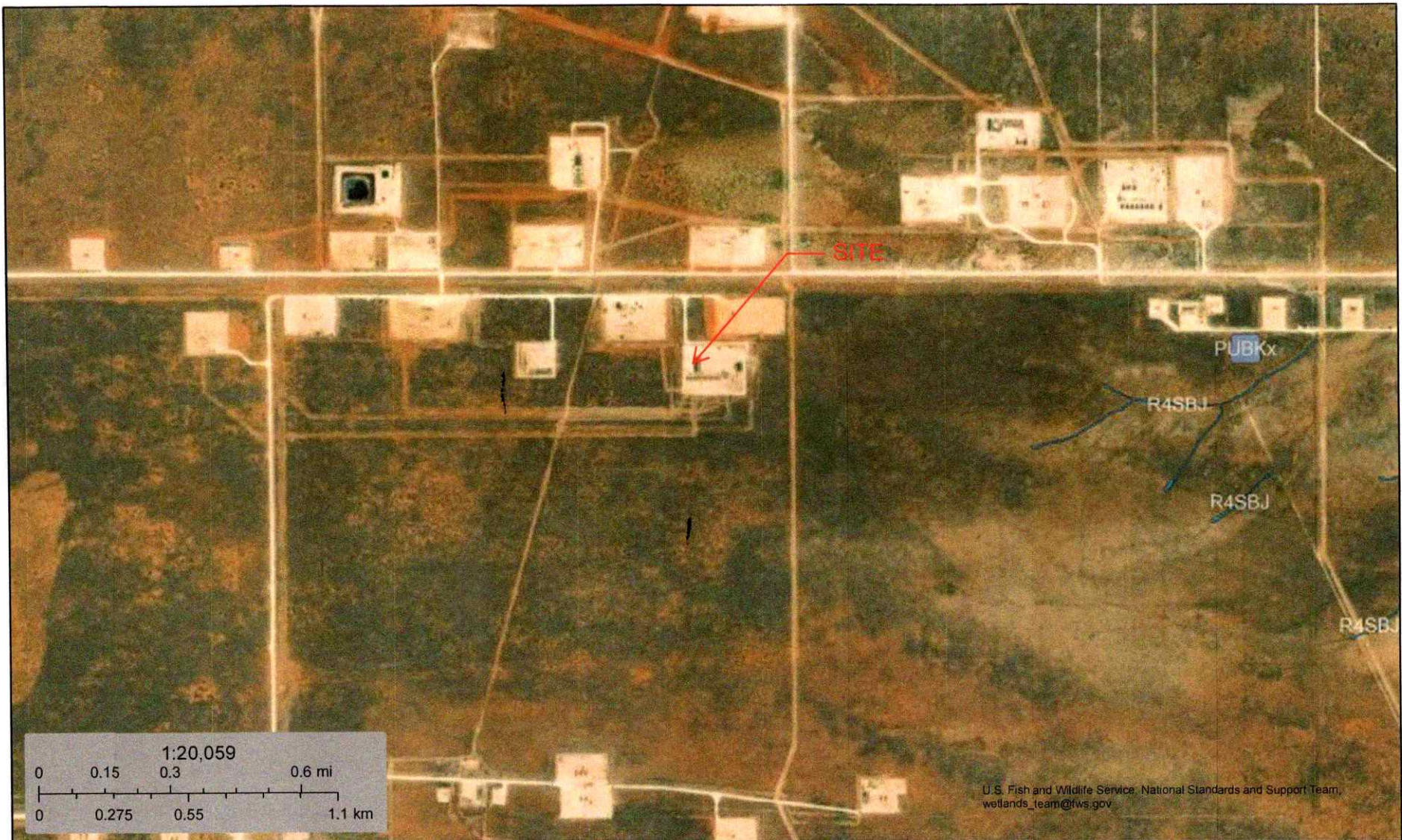
BLM, OCD, New Mexico Tech, Sources: Esri, TomTom, Garmin, FAO, NOAA, USGS, © OpenStreetMap contributors, and the GIS User Community, USGS.

New Mexico Oil Conservation Division

NM OCD Oil and Gas Map. <http://nm-emnrd.maps.arcgis.com/apps/webappviewer/index.html?id=4d017f2306164de29fd2fb9f8f35ca75> New Mexico Oil Conservation Division



Wetlands Map



November 14, 2025

Wetlands

- Estuarine and Marine Deepwater
- Estuarine and Marine Wetland

- Freshwater Emergent Wetland
- Freshwater Forested/Shrub Wetland
- Freshwater Pond

- Lake
- Other
- Riverine

This map is for general reference only. The US Fish and Wildlife Service is not responsible for the accuracy or currentness of the base data shown on this map. All wetlands related data should be used in accordance with the layer metadata found on the Wetlands Mapper web site.

National Wetlands Inventory (NWI)
This page was produced by the NWI mapper

National Flood Hazard Layer FIRMette



103°33'35"W 32°17'58"N



Legend

SEE FIS REPORT FOR DETAILED LEGEND AND INDEX MAP FOR FIRM PANEL LAYOUT

SPECIAL FLOOD HAZARD AREAS		Without Base Flood Elevation (BFE) Zone A, V, A99
		With BFE or Depth Zone AE, AO, AH, VE, AR
		Regulatory Floodway
OTHER AREAS OF FLOOD HAZARD		0.2% Annual Chance Flood Hazard, Areas of 1% annual chance flood with average depth less than one foot or with drainage areas of less than one square mile Zone X
		Future Conditions 1% Annual Chance Flood Hazard Zone X
		Area with Reduced Flood Risk due to Levee. See Notes. Zone X
		Area with Flood Risk due to Levee Zone D
OTHER AREAS		NO SCREEN Area of Minimal Flood Hazard Zone X
		Effective LOMRs
		Area of Undetermined Flood Hazard Zone D
GENERAL STRUCTURES		Channel, Culvert, or Storm Sewer
		Levee, Dike, or Floodwall
OTHER FEATURES		29.2 Cross Sections with 1% Annual Chance
		17.5 Water Surface Elevation
		Coastal Transect
		Base Flood Elevation Line (BFE)
		Limit of Study
		Jurisdiction Boundary
OTHER FEATURES		Coastal Transect Baseline
		Profile Baseline
		Hydrographic Feature
MAP PANELS		Digital Data Available
		No Digital Data Available
		Unmapped

The pin displayed on the map is an approximate point selected by the user and does not represent an authoritative property location.

This map complies with FEMA's standards for the use of digital flood maps if it is not void as described below. The basemap shown complies with FEMA's basemap accuracy standards.

The flood hazard information is derived directly from the authoritative NFHL web services provided by FEMA. This map was exported on 11/14/2025 at 6:44 PM and does not reflect changes or amendments subsequent to this date and time. The NFHL and effective information may change or become superseded by new data over time.

This map image is void if the one or more of the following map elements do not appear: basemap imagery, flood zone labels, legend, scale bar, map creation date, community identifiers, FIRM panel number, and FIRM effective date. Map images for unmapped and unmodernized areas cannot be used for regulatory purposes.

0 250 500 1,000 1,500 2,000 Feet 1:6,000

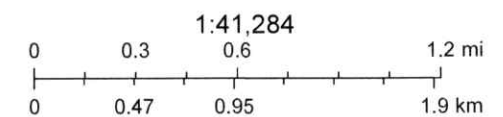
103°32'57"W 32°17'27"N

Basemap Imagery Source: USGS National Map 2023

OSE POD Location Map



6/19/2025, 12:59:44 PM



Sources: Esri, TomTom, Garmin, FAO, NOAA, USGS, (c) OpenStreetMap contributors, and the GIS User Community, Maxar

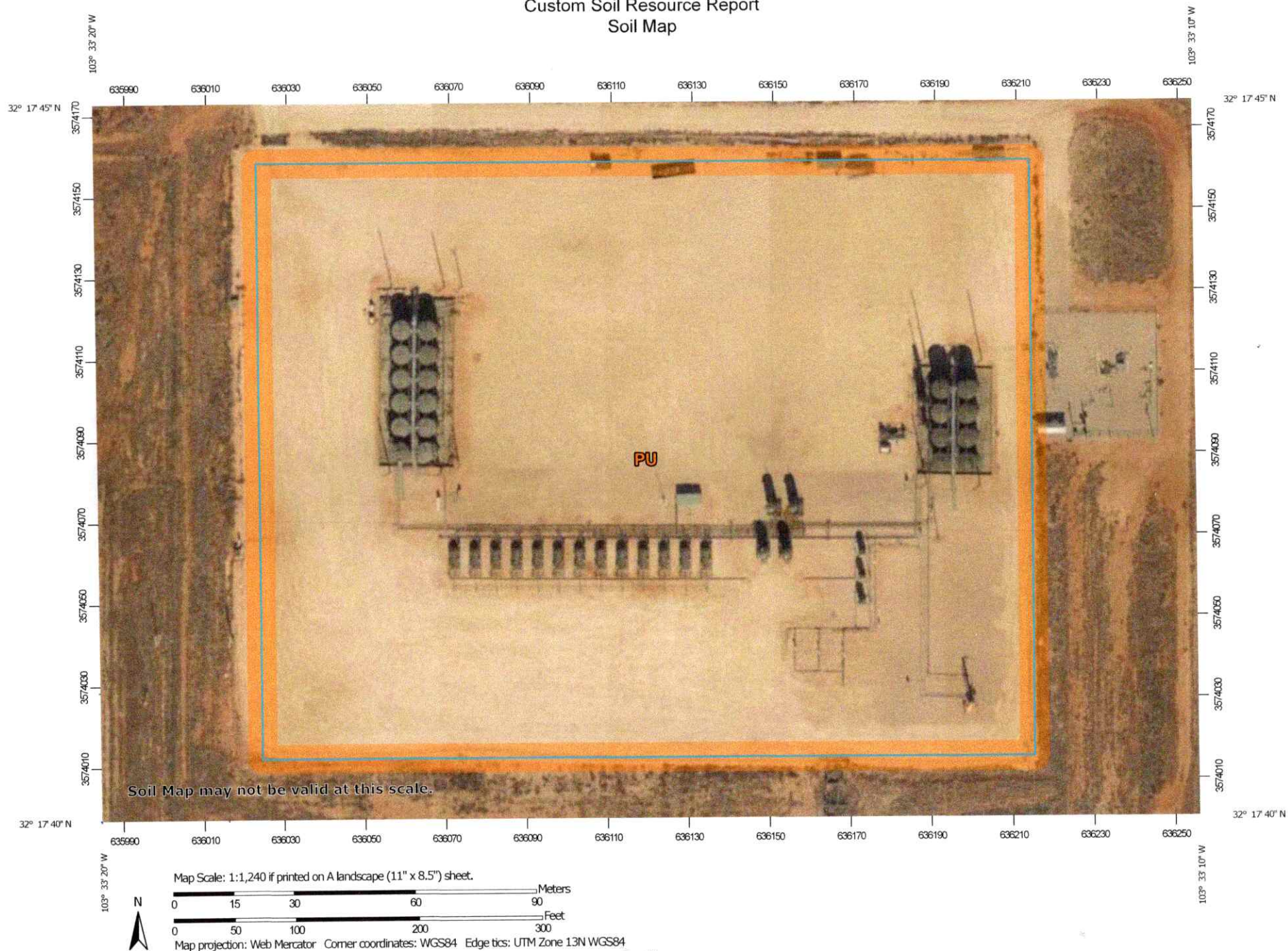
Online web user

This is an unofficial map from the OSE's online application.

Devon Energy Production Company, LP
Thistle Unit 22 CTB 2
Closure Report




Figure 2. Soil Survey Map

Custom Soil Resource Report
Soil Map

Custom Soil Resource Report

MAP LEGEND

Area of Interest (AOI)

 Area of Interest (AOI)

Soils

 Soil Map Unit Polygons


 Soil Map Unit Lines

 Soil Map Unit Points

Special Point Features

 Blowout

 Borrow Pit

 Clay Spot

 Closed Depression

 Gravel Pit

 Gravelly Spot

 Landfill

 Lava Flow

 Marsh or swamp

 Mine or Quarry

 Miscellaneous Water


 Perennial Water

 Rock Outcrop

 Saline Spot

 Sandy Spot

 Severely Eroded Spot

 Sinkhole

 Slide or Slip

 Sodic Spot

 Spoil Area

 Stony Spot


 Very Stony Spot

 Wet Spot

 Other

 Special Line Features

Water Features

 Streams and Canals

Transportation

 Rails


 Interstate Highways

 US Routes

 Major Roads

 Local Roads

Background

 Aerial Photography

MAP INFORMATION

The soil surveys that comprise your AOI were mapped at 1:20,000.

Warning: Soil Map may not be valid at this scale.

Enlargement of maps beyond the scale of mapping can cause misunderstanding of the detail of mapping and accuracy of soil line placement. The maps do not show the small areas of contrasting soils that could have been shown at a more detailed scale.

Please rely on the bar scale on each map sheet for map measurements.

Source of Map: Natural Resources Conservation Service
Web Soil Survey URL:
Coordinate System: Web Mercator (EPSG:3857)

Maps from the Web Soil Survey are based on the Web Mercator projection, which preserves direction and shape but distorts distance and area. A projection that preserves area, such as the Albers equal-area conic projection, should be used if more accurate calculations of distance or area are required.

This product is generated from the USDA-NRCS certified data as of the version date(s) listed below.

Soil Survey Area: Lea County, New Mexico
Survey Area Data: Version 22, Sep 9, 2025

Soil map units are labeled (as space allows) for map scales 1:50,000 or larger.

Date(s) aerial images were photographed: Feb 7, 2020—May 12, 2020

The orthophoto or other base map on which the soil lines were compiled and digitized probably differs from the background imagery displayed on these maps. As a result, some minor shifting of map unit boundaries may be evident.

Custom Soil Resource Report

Lea County, New Mexico**PU—Pyote and Maljamar fine sands****Map Unit Setting**

National map unit symbol: dmqq
Elevation: 3,000 to 3,900 feet
Mean annual precipitation: 10 to 12 inches
Mean annual air temperature: 60 to 62 degrees F
Frost-free period: 190 to 205 days
Farmland classification: Not prime farmland

Map Unit Composition

Pyote and similar soils: 46 percent
Maljamar and similar soils: 44 percent
Minor components: 10 percent
Estimates are based on observations, descriptions, and transects of the mapunit.

Description of Pyote**Setting**

Landform: Plains
Landform position (three-dimensional): Rise
Down-slope shape: Linear
Across-slope shape: Linear
Parent material: Sandy eolian deposits derived from sedimentary rock

Typical profile

A - 0 to 30 inches: fine sand
Bt - 30 to 60 inches: fine sandy loam

Properties and qualities

Slope: 0 to 3 percent
Depth to restrictive feature: More than 80 inches
Drainage class: Well drained
Runoff class: Negligible
Capacity of the most limiting layer to transmit water (Ksat): High (2.00 to 6.00 in/hr)
Depth to water table: More than 80 inches
Frequency of flooding: None
Frequency of ponding: None
Calcium carbonate, maximum content: 5 percent
Gypsum, maximum content: 1 percent
Maximum salinity: Nonsaline to very slightly saline (0.0 to 2.0 mmhos/cm)
Sodium adsorption ratio, maximum: 2.0
Available water supply, 0 to 60 inches: Low (about 5.1 inches)

Interpretive groups

Land capability classification (irrigated): 6e
Land capability classification (nonirrigated): 7s
Hydrologic Soil Group: A
Ecological site: R070BD003NM - Loamy Sand
Hydric soil rating: No

Custom Soil Resource Report

Description of Maljamar**Setting**

Landform: Plains

Landform position (three-dimensional): Rise

Down-slope shape: Linear

Across-slope shape: Linear

Parent material: Sandy eolian deposits derived from sedimentary rock

Typical profile

A - 0 to 24 inches: fine sand

Bt - 24 to 50 inches: sandy clay loam

Bkm - 50 to 60 inches: cemented material

Properties and qualities

Slope: 0 to 3 percent

Depth to restrictive feature: 40 to 60 inches to petrocalcic

Drainage class: Well drained

Runoff class: Very low

Capacity of the most limiting layer to transmit water (Ksat): Very low to moderately low (0.00 to 0.06 in/hr)

Depth to water table: More than 80 inches

Frequency of flooding: None

Frequency of ponding: None

Calcium carbonate, maximum content: 5 percent

Gypsum, maximum content: 1 percent

Maximum salinity: Nonsaline to very slightly saline (0.0 to 2.0 mmhos/cm)

Sodium adsorption ratio, maximum: 2.0

Available water supply, 0 to 60 inches: Low (about 5.6 inches)

Interpretive groups

Land capability classification (irrigated): 6e

Land capability classification (nonirrigated): 7e

Hydrologic Soil Group: B

Ecological site: R070BD003NM - Loamy Sand

Hydric soil rating: No

Minor Components**Kermi**

Percent of map unit: 10 percent

Ecological site: R070BC022NM - Sandhills

Hydric soil rating: No

Devon Energy Production Company, LP
Thistle Unit 22 CTB 2
Closure Report



Table 1. Site Delineation Field Sample Results

Thistle Unit 22 CTB 2 - nAPP2515351849**Initial Delineation Field Sample Results****6/10/2025****Table 1**

Sample	Field Chloride Result
SP-1-S	<120
SP-2-S	168
SP-3-S	<120
SP-4-S	408
SP-5-S	<120
SP-6-S	244
SP-7-S	1,068
SP-7-1'	272
SP-8-S	2,448
SP-8-1'	212
SP-9-S	1,312
SP-9-1'	240
SP-10-S	2,448
SP-10-1'	344
SP-11-S	9,132
SP-11-1'	472
SP-12-S	1,616
SP-12-1'	308
HP-1-S	120
HP-2-S	308
HP-3-S	244
HP-4-S	212
HP-5-S	120
HP-6-S	168
HP-7-S	240

Devon Energy Production Company, LP
Thistle Unit 22 CTB 2
Closure Report



Table 2. Laboratory Analytical Report Summarized

TABLE 2 - SOIL SAMPLE ANALYTICAL RESULTS

Thistle Unit 22 CTB 2

Devon Energy Production Company, LP

Eddy County, New Mexico

Sample ID	Date Sampled	Depth (feet bgs)	Benzene (mg/kg)	Total BTEX (mg/kg)	TPH GRO (mg/kg)	TPH DRO (mg/kg)	TPH ORO (mg/kg)	GRO+DRO (mg/kg)	Total TPH (mg/kg)	Chloride (mg/kg)
NMOCD Table I Closure Criteria (NMAC 19.15.29)			10	50	NE	NE	NE	1,000	2,500	10,000
Confirmation Soil Samples										
SP-1-1'	07/30/2025	1	<0.0250	<0.0500	<20.0	<25.0	<50.0	<25.0	<50.0	22.7
SP-2-1'	07/30/2025	1	<0.0250	<0.0500	<20.0	<25.0	<50.0	<25.0	<50.0	23.4
SP-3-1'	07/30/2025	1	<0.0250	<0.0500	<20.0	<25.0	<50.0	<25.0	<50.0	84.0
SP-4-1'	07/30/2025	1	<0.0250	<0.0500	<20.0	<25.0	<50.0	<25.0	<50.0	22.6
SP-5-1'	07/30/2025	1	<0.0250	<0.0500	<20.0	<25.0	<50.0	<25.0	<50.0	33.4
SP-6-1'	07/30/2025	1	<0.0250	<0.0500	<20.0	<25.0	<50.0	<25.0	<50.0	28.0
SP-7-1'	07/30/2025	1	<0.0250	<0.0500	<20.0	<25.0	<50.0	<25.0	<50.0	28.4
SP-8-1'	07/30/2025	1	<0.0250	<0.0500	<20.0	<25.0	<50.0	<25.0	<50.0	23.2
SP-9-1'	07/30/2025	1	<0.0250	<0.0500	<20.0	<25.0	<50.0	<25.0	<50.0	28.6
SP-10-1'	07/30/2025	1	<0.0250	<0.0500	<20.0	<25.0	<50.0	<25.0	<50.0	25.8
SP-11-1'	07/30/2025	1	<0.0250	<0.0500	<20.0	<25.0	<50.0	<25.0	<50.0	23.6
SP-12-1'	07/30/2025	1	<0.0250	<0.0500	<20.0	<25.0	<50.0	<25.0	<50.0	34.9
SP-13-1'	07/30/2025	1	<0.0250	<0.0500	<20.0	<25.0	<50.0	<25.0	<50.0	36.8
HP-1-S	07/30/2025	0	<0.0250	<0.0500	<20.0	<25.0	<50.0	<25.0	<50.0	139
HP-2-S	07/30/2025	0	<0.0250	<0.0500	<20.0	<25.0	<50.0	<25.0	<50.0	134
HP-3-S	07/30/2025	0	<0.0250	<0.0500	<20.0	<25.0	<50.0	<25.0	<50.0	41.5
HP-4-S	07/30/2025	0	<0.0250	<0.0500	<20.0	<25.0	<50.0	<25.0	<50.0	59.4
HP-5-S	07/30/2025	0	<0.0250	<0.0500	<20.0	<25.0	<50.0	<25.0	<50.0	61.8
HP-6-S	07/30/2025	0	<0.0250	<0.0500	<20.0	<25.0	<50.0	<25.0	<50.0	61.6
HP-7-S	07/30/2025	0	<0.0250	<0.0500	<20.0	<25.0	<50.0	<25.0	<50.0	129
Backfill Sample										
BF-1-S	08/26/2025		<0.0250	<0.0500	<20.0	<25.0	<50.0	<25.0	<50.0	52.8

Notes:

bgs: below ground surface

mg/kg: milligrams per kilogram

NMOCD: New Mexico Oil Conservation Division

NMAC: New Mexico Administrative Code

GRO: Gasoline Range Organics

DRO: Diesel Range Organics

ORO: Oil Range Organics

TPH: Total Petroleum Hydrocarbon

BTEX: Benzene, Toluene, Ethylbenzene, and Xylenes

Grey text represents samples that have been excavated

"<": Laboratory Analytical result is less than reporting limit

NE: Not Established

Concentrations in bold exceed the NMOCD Table I Closure Criteria or reclamation standard where applicable.

* Indicates sample was collected in area to be reclaimed after remediation is complete; reclamation for chloride in the top 4 feet is 600 mg/kg and total TPH is 100 mg/kg

Devon Energy Production Company, LP
Thistle Unit 22 CTB 2
Closure Report



Appendix A. Well Records & Logs



WELL RECORD & LOG

OFFICE OF THE STATE ENGINEER

www.ose.state.nm.us

STATE ENGINEER OFFICE
ROSWELL, NEW MEXICO

2012 NOV 21 A 10:14

1. GENERAL AND WELL LOCATION	POD NUMBER (WELL NUMBER) C-03582				OSE FILE NUMBER(S) C03582														
	WELL OWNER NAME(S) Bill Angel				PHONE (OPTIONAL) 575 369-6303														
	WELL OWNER MAILING ADDRESS PO Box 190				CITY STATE ZIP Rowington nm 88260														
	WELL LOCATION (FROM GPS)				<table border="1"> <tr> <td>DEGREES</td> <td>MINUTES</td> <td>SECONDS</td> <td></td> </tr> <tr> <td>32</td> <td>18</td> <td>34.2</td> <td>N</td> </tr> <tr> <td colspan="2">LONGITUDE</td> <td>103</td> <td>32 57.0 W</td> </tr> </table>				DEGREES	MINUTES	SECONDS		32	18	34.2	N	LONGITUDE		103
DEGREES	MINUTES	SECONDS																	
32	18	34.2	N																
LONGITUDE		103	32 57.0 W																
DESCRIPTION RELATING WELL LOCATION TO STREET ADDRESS AND COMMON LANDMARKS																			
2. OPTIONAL	(2.5 ACRE) 1/4		(10 ACRE) 1/4		(40 ACRE) 1/4		(160 ACRE) 1/4												
	SUBDIVISION NAME				LOT NUMBER		BLOCK NUMBER												
	HYDROGRAPHIC SURVEY				MAP NUMBER		TRACT NUMBER												
3. DRILLING INFORMATION	LICENSE NUMBER WD1682		NAME OF LICENSED DRILLER John Morris				NAME OF WELL DRILLING COMPANY Hunary Horse LLC												
	DRILLING STARTED 10-1-12		DRILLING ENDED 10-18-12		DEPTH OF COMPLETED WELL (FT) 590		BORE HOLE DEPTH (FT) 590												
					DEPTH WATER FIRST ENCOUNTERED (FT)		STATIC WATER LEVEL IN COMPLETED WELL (FT)												
	COMPLETED WELL IS: <input type="checkbox"/> ARTESIAN <input type="checkbox"/> DRY HOLE <input checked="" type="checkbox"/> SHALLOW (UNCONFINED)																		
	DRILLING FLUID: <input type="checkbox"/> AIR <input checked="" type="checkbox"/> MUD <input type="checkbox"/> ADDITIVES - SPECIFY:																		
	DRILLING METHOD: <input checked="" type="checkbox"/> ROTARY <input type="checkbox"/> HAMMER <input type="checkbox"/> CABLE TOOL <input type="checkbox"/> OTHER - SPECIFY:																		
	DEPTH (FT)		BORE HOLE DIA. (IN)		CASING MATERIAL		CONNECTION TYPE (CASING)												
	FROM	TO																	
	0	590	12"		PVC		glued												
4. WATER BEARING STRATA	DEPTH (FT)		THICKNESS (FT)		FORMATION DESCRIPTION OF PRINCIPAL WATER-BEARING STRATA (INCLUDE WATER-BEARING CAVITIES OR FRACTURE ZONES)			YIELD (GPM)											
	FROM	TO																	
	18	65	47		Sand			4K											
	95	110	15		Sand			4K											
	230	236	6		Sand			4K											
	383	391	8		Sand			4K											
	410	416	6		Sand			4K											
METHOD USED TO ESTIMATE YIELD OF WATER-BEARING STRATA N/A							TOTAL ESTIMATED WELL YIELD (GPM)												

FOR OSE INTERNAL USE				WELL RECORD & LOG (Version 6/9/08)			
FILE NUMBER C-3582		POD NUMBER 235.33E		TRN NUMBER 55767		PAGE 1 OF 2	
LOCATION STR		4.114					

6. SEAL AND PUMP	TYPE OF PUMP: <input type="checkbox"/> SUBMERSIBLE <input type="checkbox"/> JET <input type="checkbox"/> NO PUMP - WELL NOT EQUIPPED <input type="checkbox"/> TURBINE <input type="checkbox"/> CYLINDER <input type="checkbox"/> OTHER - SPECIFY: <u>UNKNOWN</u>						
	ANNULAR SEAL AND GRAVEL PACK	DEPTH (FT)		BORE HOLE DIA. (IN)	MATERIAL TYPE AND SIZE	AMOUNT (CUBIC FT)	METHOD OF PLACEMENT
		FROM	TO				
		0	20	12	grout / cement	8	top

6. GEOLOGIC LOG OF WELL	DEPTH (FT)		THICKNESS (FT)	COLOR AND TYPE OF MATERIAL ENCOUNTERED (INCLUDE WATER-BEARING CAVITIES OR FRACTURE ZONES)	WATER BEARING?	
	FROM	TO			<input type="checkbox"/> YES	<input type="checkbox"/> NO
	0	7	7	topsoil	<input type="checkbox"/> YES	<input checked="" type="checkbox"/> NO
	7	18	11	clay	<input type="checkbox"/> YES	<input checked="" type="checkbox"/> NO
	18	65	47	sand	<input checked="" type="checkbox"/> YES	<input type="checkbox"/> NO
	65	80	15	rock	<input type="checkbox"/> YES	<input checked="" type="checkbox"/> NO
	80	95	15	red clay	<input checked="" type="checkbox"/> YES	<input type="checkbox"/> NO
	95	110	15	sand	<input checked="" type="checkbox"/> YES	<input type="checkbox"/> NO
	110	230	120	red clay	<input checked="" type="checkbox"/> YES	<input type="checkbox"/> NO
	230	236	6	sand	<input checked="" type="checkbox"/> YES	<input type="checkbox"/> NO
	236	310	74	red clay	<input checked="" type="checkbox"/> YES	<input type="checkbox"/> NO
	310	362	52	sand clay	<input checked="" type="checkbox"/> YES	<input type="checkbox"/> NO
	362	383	21	red clay	<input checked="" type="checkbox"/> YES	<input type="checkbox"/> NO
	383	391	8	sand	<input checked="" type="checkbox"/> YES	<input type="checkbox"/> NO
	391	410	19	red clay	<input checked="" type="checkbox"/> YES	<input type="checkbox"/> NO
	410	416	6	sand	<input checked="" type="checkbox"/> YES	<input type="checkbox"/> NO
	416	513	97	red clay	<input checked="" type="checkbox"/> YES	<input type="checkbox"/> NO
	513	520	107	sand	<input checked="" type="checkbox"/> YES	<input type="checkbox"/> NO
	520	590	70	red clay	<input checked="" type="checkbox"/> YES	<input type="checkbox"/> NO

ATTACH ADDITIONAL PAGES AS NEEDED TO FULLY DESCRIBE THE GEOLOGIC LOG OF THE WELL

7. TEST & ADDITIONAL INFO.	WELL TEST		METHOD: <input type="checkbox"/> BAILER <input type="checkbox"/> PUMP <input type="checkbox"/> AIR LIFT <input type="checkbox"/> OTHER - SPECIFY: <u>N/A</u>
	TEST RESULTS - ATTACH A COPY OF DATA COLLECTED DURING WELL TESTING, INCLUDING START TIME, END TIME, AND A TABLE SHOWING DISCHARGE AND DRAWDOWN OVER THE TESTING PERIOD.		
	ADDITIONAL STATEMENTS OR EXPLANATIONS: <div style="position: absolute; right: 0; top: 0; transform: rotate(90deg); transform-origin: right top; font-size: x-small;"> STATE ENGINEER OFFICE NOV 21 10:10 AM '11 </div>		

8. SIGNATURE	THE UNDERSIGNED HEREBY CERTIFIES THAT, TO THE BEST OF HIS OR HER KNOWLEDGE AND BELIEF, THE FOREGOING IS A TRUE AND CORRECT RECORD OF THE ABOVE DESCRIBED HOLE AND THAT HE OR SHE WILL FILE THIS WELL RECORD WITH THE STATE ENGINEER AND THE PERMIT HOLDER WITHIN 20 DAYS AFTER COMPLETION OF WELL DRILLING:	
	 SIGNATURE OF DRILLER	<u>11-19-12</u> DATE

FOR USE INTERNAL USE

WELL RECORD & LOG (Version 6/9/08)

FILE NUMBER <u>C-3582</u>	POD NUMBER <u>235.33E.14.114</u>	TRN NUMBER <u>51807</u>	
LOCATION <u>5TK</u>			PAGE 2 OF 2



WELL RECORD & LOG

OFFICE OF THE STATE ENGINEER

www.ose.state.nm.us

1. GENERAL AND WELL LOCATION	OSE POD NO. (WELL NO.) POD 1 (TW-1)		WELL TAG ID NO. n/a		OSE FILE NO(S) C-4664			
	WELL OWNER NAME(S) Devon Energy				PHONE (OPTIONAL) 575-748-1838			
	WELL OWNER MAILING ADDRESS 6488 7 Rivers Hwy				CITY Artesia			
					STATE NM			
					ZIP 88210			
WELL LOCATION (FROM GPS)	DEGREES 32		MINUTES 18		SECONDS 7.02		N	
	LONGITUDE 103		22		27.99			W
* ACCURACY REQUIRED: ONE TENTH OF A SECOND * DATUM REQUIRED: WGS 84								
DESCRIPTION RELATING WELL LOCATION TO STREET ADDRESS AND COMMON LANDMARKS - PLSS (SECTION, TOWNSHIP, RANGE) WHERE AVAILABLE SE NW SE Sec.15 T23S R33S NMPM								
2. DRILLING & CASING INFORMATION	LICENSE NO 1249		NAME OF LICENSED DRILLER Jackie D. Atkins			NAME OF WELL DRILLING COMPANY Atkins Engineering Associates, Inc		
	DRILLING STARTED 9/7/2022		DRILLING ENDED 9/7/2022		DEPTH OF COMPLETED WELL (FT) 55		BORE HOLE DEPTH (FT) ±55	
					DEPTH WATER FIRST ENCOUNTERED (FT) n/a			
	COMPLETED WELL IS: <input type="checkbox"/> ARTESIAN <input checked="" type="checkbox"/> DRY HOLE <input type="checkbox"/> SHALLOW (UNCONFINED)					STATIC WATER LEVEL IN COMPLETED WELL (FT) n/a		DATE STATIC MEASURED 9/13/2022
	DRILLING FLUID: <input type="checkbox"/> AIR <input type="checkbox"/> MUD <input type="checkbox"/> ADJUSTIVES - SPECIFY							
	DRILLING METHOD: <input type="checkbox"/> ROTARY <input type="checkbox"/> HAMMER <input type="checkbox"/> CABLE TOOL <input checked="" type="checkbox"/> OTHER - SPECIFY: Hollow Stem Auger						CHECK HERE IF FITLESS ADAPTER IS INSTALLED <input type="checkbox"/>	
	DEPTH (feet bgl)		BORE HOLE DIAM (inches)	CASING MATERIAL AND/OR GRADE (include each casing string, and note sections of screen)	CASING CONNECTION TYPE (add coupling diameter)	CASING INSIDE DIAM (inches)	CASING WALL THICKNESS (inches)	SLOT SIZE (inches)
	FROM	TO						
	0	55	±6.5	Boring	--	--	--	--
3. ANNULAR MATERIAL	DEPTH (feet bgl)		BORE HOLE DIAM. (inches)	LIST ANNULAR SEAL MATERIAL AND GRAVEL PACK SIZE-RANGE BY INTERVAL	AMOUNT (cubic feet)	METHOD OF PLACEMENT		
	FROM	TO						

FOR OSE INTERNAL USE

WR-20 WELL RECORD & LOG (Version 01/28/2022)

FILE NO. C-04664	POD NO. 1	TRN NO. 732814
LOCATION 23S 33E 1S 414	WELL TAG ID NO.	PAGE 1 OF 2

FOR USE INTERNAL USE		WR-20 WELL RECORD & LOG (Version 01/28/2022)	
FILE NO	C-64664	POD NO.	1
		TRN NO	732814
LOCATION	235 33E. 15 414	WELL TAG ID NO.	
		PAGE 2 OF 2	

Mike A. Hamman, P.E.
State Engineer



Roswell Office
1900 WEST SECOND STREET
ROSWELL, NM 88201

STATE OF NEW MEXICO
OFFICE OF THE STATE ENGINEER

Trn Nbr: 732814
File Nbr: C 04664
Well File Nbr: C 04664 POD1

Oct. 03, 2022

DALE WOODALL
DEVON ENERGY
6488 7 RIVERS HWY
ARTESIA, NM 88210

Greetings:

The above numbered permit was issued in your name on 08/25/2022.

The Well Record was received in this office on 09/26/2022, stating that it had been completed on 09/07/2022, and was a dry well. The well is to be plugged according to 19.27.4.30 NMAC.

Please note that another well can be drilled under this permit if the well is completed and the well log filed on or before 08/25/2023.

If you have any questions, please feel free to contact us.

Sincerely,


Vanessa Clements
(575) 622-6521

drywell



WELL RECORD & LOG

OFFICE OF THE STATE ENGINEER

www.ose.state.nm.us

1. GENERAL AND WELL LOCATION	USE POD NO (WELL NO.) POD 1 (TW-1)		WELL TAG ID NO N/A		USE FILE NO(S) C-4929			
	WELL OWNER NAME(S) Devon Energy Production Company LP				PHONE (OPTIONAL)			
	WELL OWNER MAILING ADDRESS 5315 Buena Vista				CITY Carlsbad	STATE / ZIP NM 88220		
	WELL LOCATION (FROM GPS)	DEGREES 32	MINUTES 16	SECONDS 59.1	* ACCURACY REQUIRED: ONE TENTH OF A SECOND			
		LATITUDE 103	32	54.6	* DATA REQUIRED: WGS 84			
DESCRIPTION RELATING WELL LOCATION TO STREET ADDRESS AND COMMON LANDMARKS. PLEASE (SECTION, TOWNSHIP, RANGE) WHERE AVAILABLE Hognose Viper 23 Federal, SE SW SW Sec. 23 T23SR33E, NMPM								
2. DRILLING & CASING INFORMATION	LICENSE NO 1249		NAME OF LICENSED DRILLER Jackie D. Atkins			NAME OF WELL DRILLING COMPANY Atkins Engineering Associates, Inc.		
	DRILLING STARTED 2-11-25		DRILLING ENDED 2-11-25		DEPTH OF COMPLETED WELL (FT) Temporary Well Material	BORE HOLE DEPTH (FT) +55	DEPTH WATER FIRST ENCOUNTERED (FT) N/A	
	COMPLETED WELL IS <input type="checkbox"/> ARTESIAN *add Controller info below <input checked="" type="checkbox"/> DRY HOLE <input type="checkbox"/> SHALLOW (UNCONFINED)				STATIC WATER LEVEL IN COMPLETED WELL (FT) N/A		DATE STATIC MEASURED 03/04/2025	
	DRILLING FLUID <input type="checkbox"/> AIR <input type="checkbox"/> MUD <input type="checkbox"/> ADDITIVES SPECIFY							
	DRILLING METHOD <input type="checkbox"/> ROTARY <input type="checkbox"/> HAMMER <input type="checkbox"/> CABLE TOOL <input checked="" type="checkbox"/> OTHER SPECIFY Hollow Stem Auger						CHECK HERE IF PITLESS ADAPTER IS INSTALLED <input type="checkbox"/>	
	DEPTH (feet bgl)		BORE HOLE DIAM (inches)	CASING MATERIAL AND/OR GRADE (include each casing string, and note sections of screen)	CASING CONNECTION TYPE (add coupling diameter)	CASING INSIDE DIAM (inches)	CASING WALL THICKNESS (inches)	SLOT SIZE (inches)
	FROM	TO						
	0	55	+6.25	Soil Boring	--	--	--	--
3. ANNULAR MATERIAL	DEPTH (feet bgl)		BORE HOLE DIAM (inches)	LIST ANNULAR SEAL MATERIAL AND GRAVEL PACK SIZE RANGE BY INTERVAL (*If using Controllers for Artesian wells, indicate the spacing below)	AMOUNT (cubic feet)	METHOD OF PLACEMENT		
	FROM	TO						
				N/A				

FOR USE INTERNAL USE

WR 20 WELL RECORD & LOG (Version 09/22/2022)

FILE NO	C-4929	POD NO	1	TRN NO	776877
LOCATION	285.33E.23 433	WELL TAG ID NO		PAGE 1 OF 2	

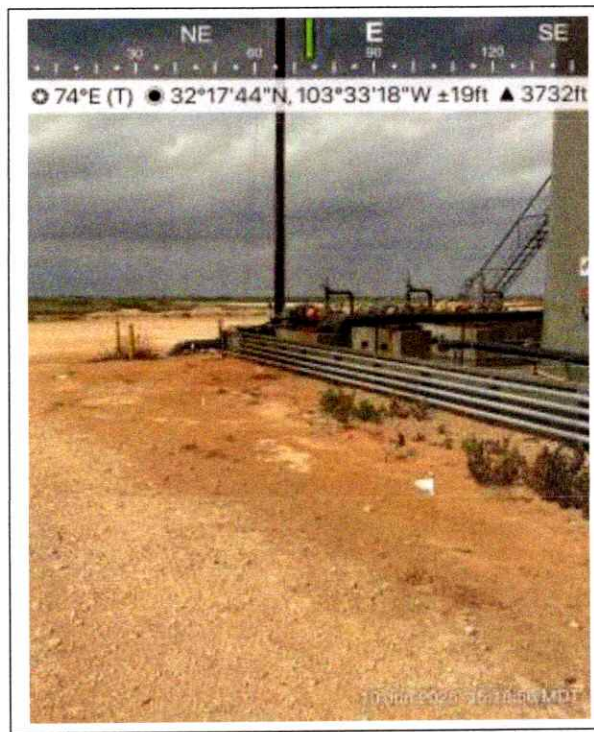
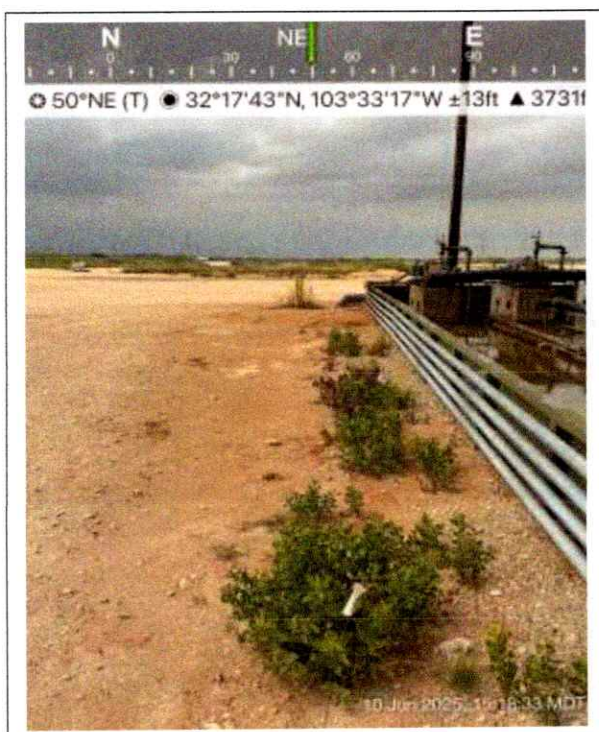
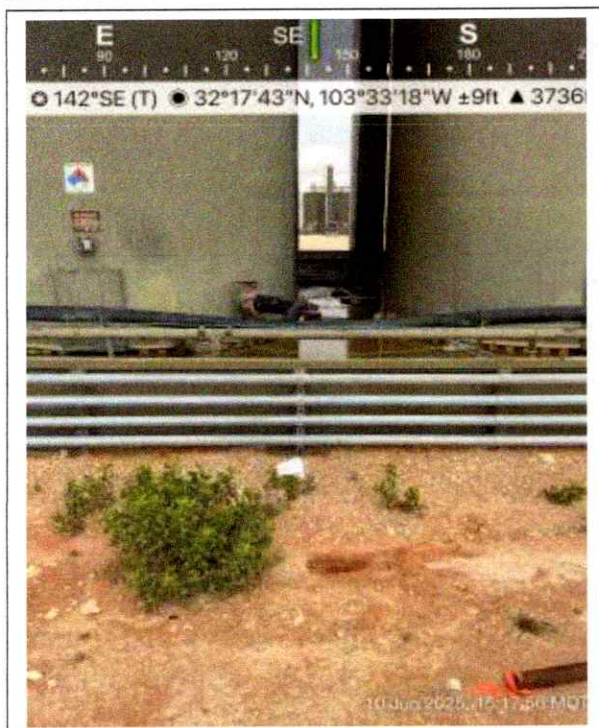
4. HYDROGEOLOGIC LOG OF WELL.

WR-20 WELL RECORD & LOG (Version 09/22/2022)

Devon Energy Production Company, LP
Thistle Unit 22 CTB 2
Closure Report

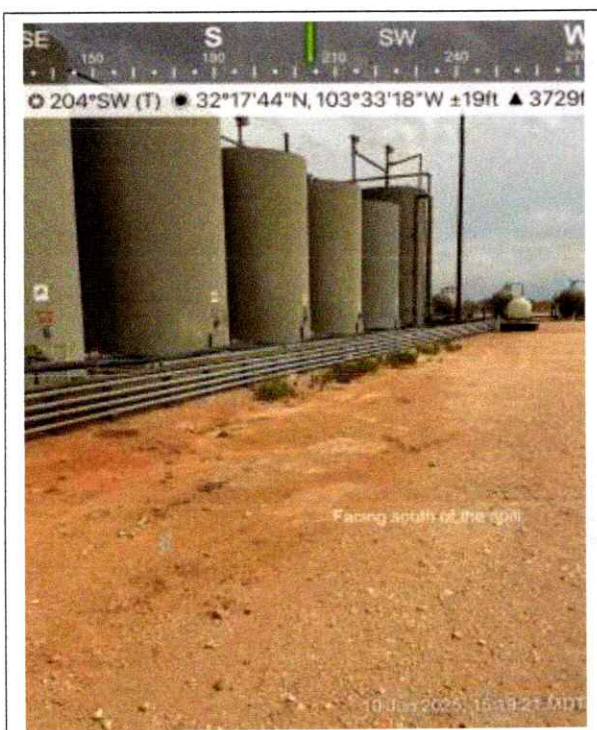
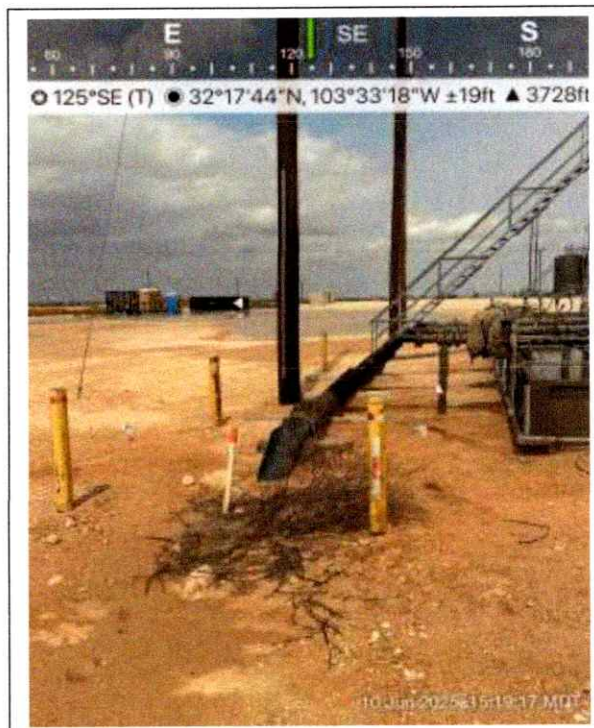
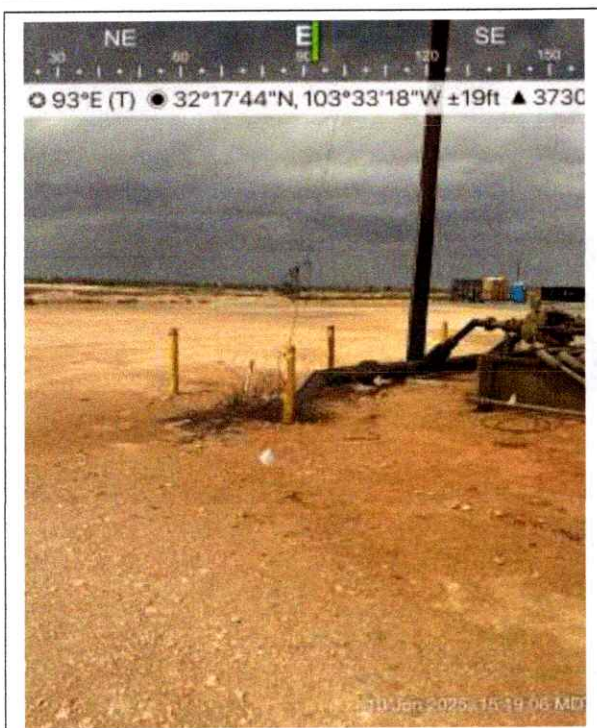


Appendix B. Photographic Log

Devon Energy – Thistle Unit 22 CTB 2**June 10, 2025**

Devon Energy – Thistle Unit 22 CTB 2

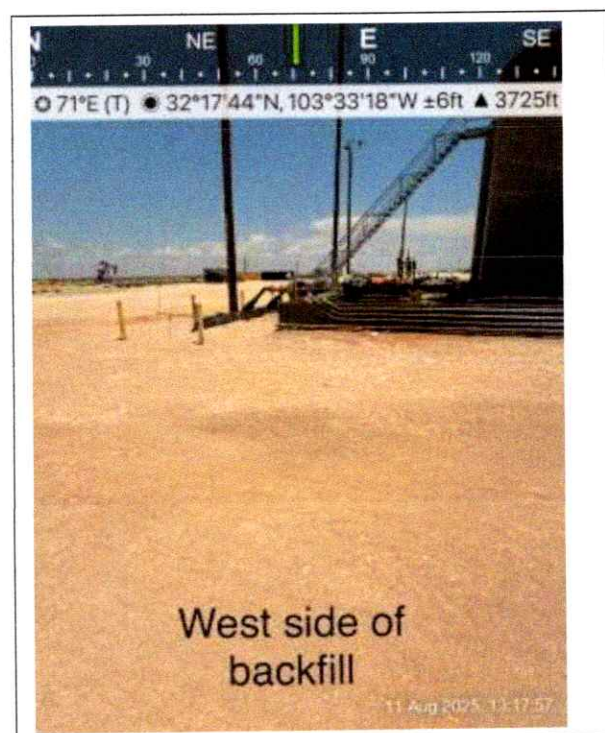
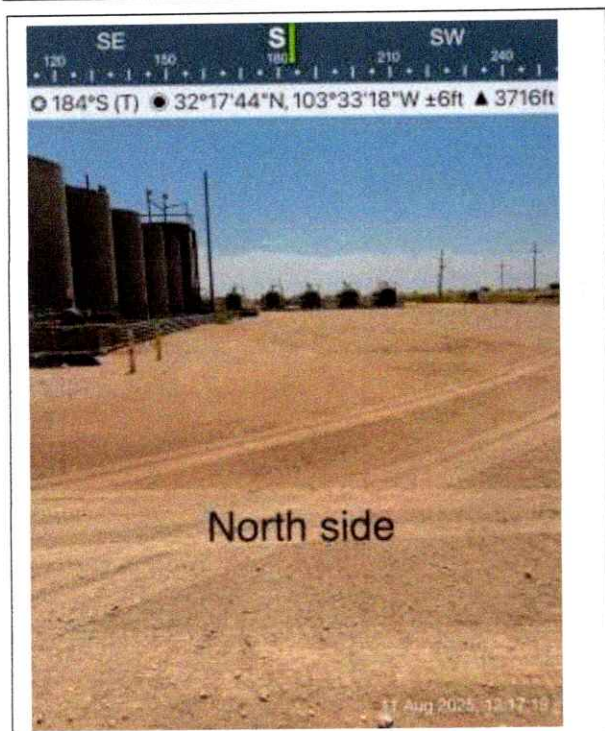
June 10, 2025



Devon Energy – Thistle Unit 22 CTB 2

June 10, 2025



Devon Energy – Thistle Unit 22 CTB 2**August 11, 2025**

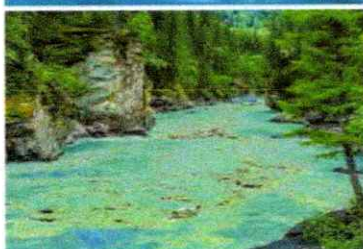
Devon Energy Production Company, LP
Thistle Unit 22 CTB 2
Closure Report



Appendix C. Laboratory Analytical Reports & Chain of Custody Documentation

Report to:

Leslie Mendenhall



5796 U.S. Hwy 64
Farmington, NM 87401

Phone: (505) 632-1881
Envirotech-inc.com



envirotech

Practical Solutions for a Better Tomorrow

Analytical Report

Safety & Environmental Solutions

Project Name: THISTLE UNIT 22 CTB 2

Work Order: E507360

Job Number: 01058-0007

Received: 8/1/2025

Revision: 1

Report Reviewed By:

Walter Hinchman
Laboratory Director
8/7/25

Envirotech Inc. certifies the test results meet all requirements of TNI unless noted otherwise.
Statement of Data Authenticity: Envirotech Inc. attests the data reported has not been altered in any way.
Partial or incomplete reproduction of this report is prohibited, unless approved by Envirotech Inc.
Envirotech Inc. holds the Utah TNI certification NM00979 for data reported.
Envirotech Inc. holds the Texas TNI certification T104704557 for data reported.

Date Reported: 8/7/25

Leslie Mendenhall
1501 W Bender Blvd
Hobbs, NM 88240



Project Name: THISTLE UNIT 22 CTB 2
Workorder: E507360
Date Received: 8/1/2025 8:00:00AM

Leslie Mendenhall,

Thank you for choosing Envirotech, Inc. as your analytical testing laboratory for the sample(s) received on, 8/1/2025 8:00:00AM, under the Project Name: THISTLE UNIT 22 CTB 2.

The analytical test results summarized in this report with the Project Name: THISTLE UNIT 22 CTB 2 apply to the individual samples collected, identified and submitted bearing the project name on the enclosed chain-of-custody. Subcontracted sample analyses not conducted by Envirotech, Inc., are attached in full as issued by the subcontract laboratory.

Please review the Chain-of-Custody (COC) and Sample Receipt Checklist (SRC) for any issues regarding sample receipt temperature, containers, preservation etc. To best understand your test results, review the entire report summarizing your sample data and the associated quality control batch data.

All reported data in this analytical report were analyzed according to the referenced method(s) and are in compliance with the latest NELAC/TNI standards, unless otherwise noted. Samples or analytical quality control parameters not meeting specific QC criteria are qualified with a data flag. Data flag definitions are located in the Notes and Definitions section of this analytical report.

If you have any questions concerning this report, please feel free to contact Envirotech, Inc.

Respectfully,

Walter Hinchman
Laboratory Director
Office: 505-632-1881
Cell: 775-287-1762
whinchman@envirotech-inc.com

Raina Schwanz
Laboratory Administrator
Office: 505-632-1881
rainaschwanz@envirotech-inc.com

Field Offices:

Southern New Mexico Area

Lynn Jarboe
Laboratory Technical Representative
Office: 505-421-LABS(5227)
Cell: 505-320-4759
ljjarboe@envirotech-inc.com

Michelle Gonzales
Client Representative
Office: 505-421-LABS(5227)
Cell: 505-947-8222
mgonzales@envirotech-inc.com

Envirotech Web Address: www.envirotech-inc.com

Table of Contents

Title Page	1
Cover Page	2
Table of Contents	3
Sample Summary	5
Sample Data	6
SP-1-1'	6
SP-2-1'	7
SP-3-1'	8
SP-4-1'	9
SP-5-1'	10
SP-6-1'	11
SP-7-1'	12
SP-8-1'	13
SP-9-1'	14
SP-10-1'	15
SP-11-1'	16
SP-12-1'	17
SP-13-1'	18
HP-1-S	19
HP-2-S	20
HP-3-S	21
HP-4-S	22
HP-5-S	23
HP-6-S	24
HP-7-S	25

Table of Contents (continued)

QC Summary Data	26
QC - Volatile Organics by EPA 8021B	26
QC - Nonhalogenated Organics by EPA 8015D - GRO	27
QC - Nonhalogenated Organics by EPA 8015D - DRO/ORO	28
QC - Anions by EPA 300.0/9056A	29
Definitions and Notes	30
Chain of Custody etc.	31

Sample Summary

Safety & Environmental Solutions 1501 W Bender Blvd Hobbs NM, 88240	Project Name:	THISTLE UNIT 22 CTB 2	Reported: 08/07/25 08:24
	Project Number:	01058-0007	
	Project Manager:	Leslie Mendenhall	

Client Sample ID	Lab Sample ID	Matrix	Sampled	Received	Container
SP-1-1'	E507360-01A	Soil	07/30/25	08/01/25	Glass Jar, 2 oz.
SP-2-1'	E507360-02A	Soil	07/30/25	08/01/25	Glass Jar, 2 oz.
SP-3-1'	E507360-03A	Soil	07/30/25	08/01/25	Glass Jar, 2 oz.
SP-4-1'	E507360-04A	Soil	07/30/25	08/01/25	Glass Jar, 2 oz.
SP-5-1'	E507360-05A	Soil	07/30/25	08/01/25	Glass Jar, 2 oz.
SP-6-1'	E507360-06A	Soil	07/30/25	08/01/25	Glass Jar, 2 oz.
SP-7-1'	E507360-07A	Soil	07/30/25	08/01/25	Glass Jar, 2 oz.
SP-8-1'	E507360-08A	Soil	07/30/25	08/01/25	Glass Jar, 2 oz.
SP-9-1'	E507360-09A	Soil	07/30/25	08/01/25	Glass Jar, 2 oz.
SP-10-1'	E507360-10A	Soil	07/30/25	08/01/25	Glass Jar, 2 oz.
SP-11-1'	E507360-11A	Soil	07/30/25	08/01/25	Glass Jar, 2 oz.
SP-12-1'	E507360-12A	Soil	07/30/25	08/01/25	Glass Jar, 2 oz.
SP-13-1'	E507360-13A	Soil	07/30/25	08/01/25	Glass Jar, 2 oz.
HP-1-S	E507360-14A	Soil	07/30/25	08/01/25	Glass Jar, 2 oz.
HP-2-S	E507360-15A	Soil	07/30/25	08/01/25	Glass Jar, 2 oz.
HP-3-S	E507360-16A	Soil	07/30/25	08/01/25	Glass Jar, 2 oz.
HP-4-S	E507360-17A	Soil	07/30/25	08/01/25	Glass Jar, 2 oz.
HP-5-S	E507360-18A	Soil	07/30/25	08/01/25	Glass Jar, 2 oz.
HP-6-S	E507360-19A	Soil	07/30/25	08/01/25	Glass Jar, 2 oz.
HP-7-S	E507360-20A	Soil	07/30/25	08/01/25	Glass Jar, 2 oz.



Sample Data

Safety & Environmental Solutions 1501 W Bender Blvd Hobbs NM, 88240	Project Name: THISTLE UNIT 22 CTB 2 Project Number: 01058-0007 Project Manager: Leslie Mendenhall	Reported: 8/7/2025 8:24:38AM
---	---	---------------------------------

SP-1-1'

E507360-01

Analyte	Result	Reporting Limit	Dilution	Prepared	Analyzed	Notes
Volatile Organics by EPA 8021B	mg/kg	mg/kg		Analyst: SL		Batch: 2532002
Benzene	ND	0.0250	1	08/04/25	08/05/25	
Ethylbenzene	ND	0.0250	1	08/04/25	08/05/25	
Toluene	ND	0.0250	1	08/04/25	08/05/25	
o-Xylene	ND	0.0250	1	08/04/25	08/05/25	
p,m-Xylene	ND	0.0500	1	08/04/25	08/05/25	
Total Xylenes	ND	0.0250	1	08/04/25	08/05/25	
Surrogate: 4-Bromochlorobenzene-PID	86.2 %	70-130		08/04/25	08/05/25	
Nonhalogenated Organics by EPA 8015D - GRO	mg/kg	mg/kg		Analyst: SL		Batch: 2532002
Gasoline Range Organics (C6-C10)	ND	20.0	1	08/04/25	08/05/25	
Surrogate: 1-Chloro-4-fluorobenzene-FID	90.3 %	70-130		08/04/25	08/05/25	
Nonhalogenated Organics by EPA 8015D - DRO/ORO	mg/kg	mg/kg		Analyst: HM		Batch: 2531179
Diesel Range Organics (C10-C28)	ND	25.0	1	08/01/25	08/05/25	
Oil Range Organics (C28-C36)	ND	50.0	1	08/01/25	08/05/25	
Surrogate: n-Nonane	99.1 %	61-141		08/01/25	08/05/25	
Anions by EPA 300.0/9056A	mg/kg	mg/kg		Analyst: JM		Batch: 2531169
Chloride	22.7	20.0	1	08/01/25	08/04/25	



Sample Data

Safety & Environmental Solutions 1501 W Bender Blvd Hobbs NM, 88240	Project Name: THISTLE UNIT 22 CTB 2 Project Number: 01058-0007 Project Manager: Leslie Mendenhall	Reported: 8/7/2025 8:24:38AM
---	---	---------------------------------

SP-2-1'

E507360-02

Analyte	Result	Reporting Limit	Dilution	Prepared	Analyzed	Notes
Volatil Organic by EPA 8021B	mg/kg	mg/kg		Analyst: SL		Batch: 2532002
Benzene	ND	0.0250	1	08/04/25	08/05/25	
Ethylbenzene	ND	0.0250	1	08/04/25	08/05/25	
Toluene	ND	0.0250	1	08/04/25	08/05/25	
o-Xylene	ND	0.0250	1	08/04/25	08/05/25	
p,m-Xylene	ND	0.0500	1	08/04/25	08/05/25	
Total Xylenes	ND	0.0250	1	08/04/25	08/05/25	
Surrogate: 4-Bromochlorobenzene-PID		81.5 %	70-130	08/04/25	08/05/25	
Nonhalogenated Organics by EPA 8015D - GRO	mg/kg	mg/kg		Analyst: SL		Batch: 2532002
Gasoline Range Organics (C6-C10)	ND	20.0	1	08/04/25	08/05/25	
Surrogate: 1-Chloro-4-fluorobenzene-FID		90.1 %	70-130	08/04/25	08/05/25	
Nonhalogenated Organics by EPA 8015D - DRO/ORO	mg/kg	mg/kg		Analyst: HM		Batch: 2531179
Diesel Range Organics (C10-C28)	ND	25.0	1	08/01/25	08/05/25	
Oil Range Organics (C28-C36)	ND	50.0	1	08/01/25	08/05/25	
Surrogate: n-Nonane		102 %	61-141	08/01/25	08/05/25	
Anions by EPA 300.0/9056A	mg/kg	mg/kg		Analyst: JM		Batch: 2531169
Chloride	23.4	20.0	1	08/01/25	08/04/25	



Sample Data

Safety & Environmental Solutions	Project Name:	THISTLE UNIT 22 CTB 2	Reported:
1501 W Bender Blvd	Project Number:	01058-0007	8/7/2025 8:24:38AM
Hobbs NM, 88240	Project Manager:	Leslie Mendenhall	

SP-3-1'

E507360-03

Analyte	Result	Reporting Limit	Dilution	Prepared	Analyzed	Notes
Volatile Organics by EPA 8021B	mg/kg	mg/kg		Analyst: SL		Batch: 2532002
Benzene	ND	0.0250	1	08/04/25	08/05/25	
Ethylbenzene	ND	0.0250	1	08/04/25	08/05/25	
Toluene	ND	0.0250	1	08/04/25	08/05/25	
o-Xylene	ND	0.0250	1	08/04/25	08/05/25	
p,m-Xylene	ND	0.0500	1	08/04/25	08/05/25	
Total Xylenes	ND	0.0250	1	08/04/25	08/05/25	
Surrogate: 4-Bromochlorobenzene-PID	82.4 %	70-130		08/04/25	08/05/25	
Nonhalogenated Organics by EPA 8015D - GRO	mg/kg	mg/kg		Analyst: SL		Batch: 2532002
Gasoline Range Organics (C6-C10)	ND	20.0	1	08/04/25	08/05/25	
Surrogate: 1-Chloro-4-fluorobenzene-FID	90.2 %	70-130		08/04/25	08/05/25	
Nonhalogenated Organics by EPA 8015D - DRO/ORO	mg/kg	mg/kg		Analyst: HM		Batch: 2531179
Diesel Range Organics (C10-C28)	ND	25.0	1	08/01/25	08/05/25	
Oil Range Organics (C28-C36)	ND	50.0	1	08/01/25	08/05/25	
Surrogate: n-Nonane	96.8 %	61-141		08/01/25	08/05/25	
Anions by EPA 300.0/9056A	mg/kg	mg/kg		Analyst: JM		Batch: 2531169
Chloride	84.0	20.0	1	08/01/25	08/04/25	



Sample Data

Safety & Environmental Solutions
1501 W Bender Blvd
Hobbs NM, 88240

Project Name: THISTLE UNIT 22 CTB 2
Project Number: 01058-0007
Project Manager: Leslie Mendenhall

Reported:
8/7/2025 8:24:38AM

SP-4-1'

E507360-04

Analyte	Result	Reporting Limit	Dilution	Prepared	Analyzed	Notes
Volatiles by EPA 8021B						
	mg/kg	mg/kg		Analyst: SL		Batch: 2532002
Benzene	ND	0.0250	1	08/04/25	08/05/25	
Ethylbenzene	ND	0.0250	1	08/04/25	08/05/25	
Toluene	ND	0.0250	1	08/04/25	08/05/25	
o-Xylene	ND	0.0250	1	08/04/25	08/05/25	
p,m-Xylene	ND	0.0500	1	08/04/25	08/05/25	
Total Xylenes	ND	0.0250	1	08/04/25	08/05/25	
Surrogate: 4-Bromochlorobenzene-PID		87.1 %	70-130	08/04/25	08/05/25	
Nonhalogenated Organics by EPA 8015D - GRO						
	mg/kg	mg/kg		Analyst: SL		Batch: 2532002
Gasoline Range Organics (C6-C10)	ND	20.0	1	08/04/25	08/05/25	
Surrogate: 1-Chloro-4-fluorobenzene-FID		91.5 %	70-130	08/04/25	08/05/25	
Nonhalogenated Organics by EPA 8015D - DRO/ORO						
	mg/kg	mg/kg		Analyst: HM		Batch: 2531179
Diesel Range Organics (C10-C28)	ND	25.0	1	08/01/25	08/05/25	
Oil Range Organics (C28-C36)	ND	50.0	1	08/01/25	08/05/25	
Surrogate: n-Nonane		103 %	61-141	08/01/25	08/05/25	
Anions by EPA 300.0/9056A						
	mg/kg	mg/kg		Analyst: JM		Batch: 2531169
Chloride	22.6	20.0	1	08/01/25	08/04/25	



Sample Data

Safety & Environmental Solutions	Project Name:	THISTLE UNIT 22 CTB 2	Reported: 8/7/2025 8:24:38AM
1501 W Bender Blvd	Project Number:	01058-0007	
Hobbs NM, 88240	Project Manager:	Leslie Mendenhall	

SP-5-1'

E507360-05

Analyte	Result	Reporting Limit	Dilution	Prepared	Analyzed	Notes
Volatile Organics by EPA 8021B	mg/kg	mg/kg		Analyst: SL		Batch: 2532002
Benzene	ND	0.0250	1	08/04/25	08/05/25	
Ethylbenzene	ND	0.0250	1	08/04/25	08/05/25	
Toluene	ND	0.0250	1	08/04/25	08/05/25	
o-Xylene	ND	0.0250	1	08/04/25	08/05/25	
p,m-Xylene	ND	0.0500	1	08/04/25	08/05/25	
Total Xylenes	ND	0.0250	1	08/04/25	08/05/25	
Surrogate: 4-Bromochlorobenzene-PID	82.2 %	70-130		08/04/25	08/05/25	
Nonhalogenated Organics by EPA 8015D - GRO	mg/kg	mg/kg		Analyst: SL		Batch: 2532002
Gasoline Range Organics (C6-C10)	ND	20.0	1	08/04/25	08/05/25	
Surrogate: 1-Chloro-4-fluorobenzene-FID	90.6 %	70-130		08/04/25	08/05/25	
Nonhalogenated Organics by EPA 8015D - DRO/ORO	mg/kg	mg/kg		Analyst: HM		Batch: 2531179
Diesel Range Organics (C10-C28)	ND	25.0	1	08/01/25	08/05/25	
Oil Range Organics (C28-C36)	ND	50.0	1	08/01/25	08/05/25	
Surrogate: n-Nonane	98.0 %	61-141		08/01/25	08/05/25	
Anions by EPA 300.0/9056A	mg/kg	mg/kg		Analyst: JM		Batch: 2531169
Chloride	33.4	20.0	1	08/01/25	08/04/25	



Sample Data

Safety & Environmental Solutions 1501 W Bender Blvd Hobbs NM, 88240	Project Name: THISTLE UNIT 22 CTB 2 Project Number: 01058-0007 Project Manager: Leslie Mendenhall	Reported: 8/7/2025 8:24:38AM
---	---	---------------------------------

SP-6-1'

E507360-06

Analyte	Result	Reporting Limit	Dilution	Prepared	Analyzed	Notes
Volatile Organics by EPA 8021B	mg/kg	mg/kg		Analyst: SL		Batch: 2532002
Benzene	ND	0.0250	1	08/04/25	08/05/25	
Ethylbenzene	ND	0.0250	1	08/04/25	08/05/25	
Toluene	ND	0.0250	1	08/04/25	08/05/25	
o-Xylene	ND	0.0250	1	08/04/25	08/05/25	
p,m-Xylene	ND	0.0500	1	08/04/25	08/05/25	
Total Xylenes	ND	0.0250	1	08/04/25	08/05/25	
Surrogate: 4-Bromochlorobenzene-PID		83.0 %	70-130	08/04/25	08/05/25	
Nonhalogenated Organics by EPA 8015D - GRO	mg/kg	mg/kg		Analyst: SL		Batch: 2532002
Gasoline Range Organics (C6-C10)	ND	20.0	1	08/04/25	08/05/25	
Surrogate: 1-Chloro-4-fluorobenzene-FID		89.8 %	70-130	08/04/25	08/05/25	
Nonhalogenated Organics by EPA 8015D - DRO/ORO	mg/kg	mg/kg		Analyst: HM		Batch: 2531179
Diesel Range Organics (C10-C28)	ND	25.0	1	08/01/25	08/05/25	
Oil Range Organics (C28-C36)	ND	50.0	1	08/01/25	08/05/25	
Surrogate: n-Nonane		97.2 %	61-141	08/01/25	08/05/25	
Anions by EPA 300.0/9056A	mg/kg	mg/kg		Analyst: JM		Batch: 2531169
Chloride	28.0	20.0	1	08/01/25	08/04/25	



Sample Data

Safety & Environmental Solutions
1501 W Bender Blvd
Hobbs NM, 88240

Project Name: THISTLE UNIT 22 CTB 2
Project Number: 01058-0007
Project Manager: Leslie Mendenhall

Reported:
8/7/2025 8:24:38AM

SP-7-1'

E507360-07

Analyte	Result	Reporting Limit	Dilution	Prepared	Analyzed	Notes
Volatile Organics by EPA 8021B	mg/kg	mg/kg		Analyst: SL		Batch: 2532002
Benzene	ND	0.0250	1	08/04/25	08/05/25	
Ethylbenzene	ND	0.0250	1	08/04/25	08/05/25	
Toluene	ND	0.0250	1	08/04/25	08/05/25	
o-Xylene	ND	0.0250	1	08/04/25	08/05/25	
p,m-Xylene	ND	0.0500	1	08/04/25	08/05/25	
Total Xylenes	ND	0.0250	1	08/04/25	08/05/25	
Surrogate: 4-Bromochlorobenzene-PID	84.0 %	70-130		08/04/25	08/05/25	
Nonhalogenated Organics by EPA 8015D - GRO	mg/kg	mg/kg		Analyst: SL		Batch: 2532002
Gasoline Range Organics (C6-C10)	ND	20.0	1	08/04/25	08/05/25	
Surrogate: 1-Chloro-4-fluorobenzene-FID	91.0 %	70-130		08/04/25	08/05/25	
Nonhalogenated Organics by EPA 8015D - DRO/ORO	mg/kg	mg/kg		Analyst: HM		Batch: 2531179
Diesel Range Organics (C10-C28)	ND	25.0	1	08/01/25	08/05/25	
Oil Range Organics (C28-C36)	ND	50.0	1	08/01/25	08/05/25	
Surrogate: n-Nonane	98.8 %	61-141		08/01/25	08/05/25	
Anions by EPA 300.0/9056A	mg/kg	mg/kg		Analyst: JM		Batch: 2531169
Chloride	28.4	20.0	1	08/01/25	08/04/25	



Sample Data

Safety & Environmental Solutions
1501 W Bender Blvd
Hobbs NM, 88240

Project Name: THISTLE UNIT 22 CTB 2
Project Number: 01058-0007
Project Manager: Leslie Mendenhall

Reported:
8/7/2025 8:24:38AM

SP-8-1'

E507360-08

Analyte	Result	Reporting Limit	Dilution	Prepared	Analyzed	Notes
Volatil Organic by EPA 8021B						
	mg/kg	mg/kg		Analyst: SL		Batch: 2532002
Benzene	ND	0.0250	1	08/04/25	08/05/25	
Ethylbenzene	ND	0.0250	1	08/04/25	08/05/25	
Toluene	ND	0.0250	1	08/04/25	08/05/25	
o-Xylene	ND	0.0250	1	08/04/25	08/05/25	
p,m-Xylene	ND	0.0500	1	08/04/25	08/05/25	
Total Xylenes	ND	0.0250	1	08/04/25	08/05/25	
Surrogate: 4-Bromochlorobenzene-PID		85.7 %	70-130	08/04/25	08/05/25	
Nonhalogenated Organics by EPA 8015D - GRO						
	mg/kg	mg/kg		Analyst: SL		Batch: 2532002
Gasoline Range Organics (C6-C10)	ND	20.0	1	08/04/25	08/05/25	
Surrogate: 1-Chloro-4-fluorobenzene-FID		90.8 %	70-130	08/04/25	08/05/25	
Nonhalogenated Organics by EPA 8015D - DRO/ORO						
	mg/kg	mg/kg		Analyst: HM		Batch: 2531179
Diesel Range Organics (C10-C28)	ND	25.0	1	08/01/25	08/05/25	
Oil Range Organics (C28-C36)	ND	50.0	1	08/01/25	08/05/25	
Surrogate: n-Nonane		96.4 %	61-141	08/01/25	08/05/25	
Anions by EPA 300.0/9056A						
	mg/kg	mg/kg		Analyst: JM		Batch: 2531169
Chloride	23.2	20.0	1	08/01/25	08/04/25	



Sample Data

Safety & Environmental Solutions 1501 W Bender Blvd Hobbs NM, 88240	Project Name: THISTLE UNIT 22 CTB 2 Project Number: 01058-0007 Project Manager: Leslie Mendenhall	Reported: 8/7/2025 8:24:38AM
---	---	---------------------------------

SP-9-1'

E507360-09

Analyte	Result	Reporting Limit	Dilution	Prepared	Analyzed	Notes
Volatile Organics by EPA 8021B	mg/kg	mg/kg		Analyst: SL		Batch: 2532002
Benzene	ND	0.0250	1	08/04/25	08/05/25	
Ethylbenzene	ND	0.0250	1	08/04/25	08/05/25	
Toluene	ND	0.0250	1	08/04/25	08/05/25	
o-Xylene	ND	0.0250	1	08/04/25	08/05/25	
p,m-Xylene	ND	0.0500	1	08/04/25	08/05/25	
Total Xylenes	ND	0.0250	1	08/04/25	08/05/25	
Surrogate: 4-Bromochlorobenzene-PID	86.0 %	70-130		08/04/25	08/05/25	
Nonhalogenated Organics by EPA 8015D - GRO	mg/kg	mg/kg		Analyst: SL		Batch: 2532002
Gasoline Range Organics (C6-C10)	ND	20.0	1	08/04/25	08/05/25	
Surrogate: 1-Chloro-4-fluorobenzene-FID	93.5 %	70-130		08/04/25	08/05/25	
Nonhalogenated Organics by EPA 8015D - DRO/ORO	mg/kg	mg/kg		Analyst: HM		Batch: 2531179
Diesel Range Organics (C10-C28)	ND	25.0	1	08/01/25	08/05/25	
Oil Range Organics (C28-C36)	ND	50.0	1	08/01/25	08/05/25	
Surrogate: n-Nonane	97.7 %	61-141		08/01/25	08/05/25	
Anions by EPA 300.0/9056A	mg/kg	mg/kg		Analyst: JM		Batch: 2531169
Chloride	28.6	20.0	1	08/01/25	08/04/25	



Sample Data

Safety & Environmental Solutions
1501 W Bender Blvd
Hobbs NM, 88240

Project Name: THISTLE UNIT 22 CTB 2
Project Number: 01058-0007
Project Manager: Leslie Mendenhall

Reported:
8/7/2025 8:24:38AM

SP-10-1'

E507360-10

Analyte	Result	Reporting Limit	Dilution	Prepared	Analyzed	Notes
Volatile Organics by EPA 8021B						
	mg/kg	mg/kg		Analyst: SL		Batch: 2532002
Benzene	ND	0.0250	1	08/04/25	08/05/25	
Ethylbenzene	ND	0.0250	1	08/04/25	08/05/25	
Toluene	ND	0.0250	1	08/04/25	08/05/25	
o-Xylene	ND	0.0250	1	08/04/25	08/05/25	
p,m-Xylene	ND	0.0500	1	08/04/25	08/05/25	
Total Xylenes	ND	0.0250	1	08/04/25	08/05/25	
Surrogate: 4-Bromochlorobenzene-PID	85.9 %	70-130		08/04/25	08/05/25	
Nonhalogenated Organics by EPA 8015D - GRO						
	mg/kg	mg/kg		Analyst: SL		Batch: 2532002
Gasoline Range Organics (C6-C10)	ND	20.0	1	08/04/25	08/05/25	
Surrogate: 1-Chloro-4-fluorobenzene-FID	93.1 %	70-130		08/04/25	08/05/25	
Nonhalogenated Organics by EPA 8015D - DRO/ORO						
	mg/kg	mg/kg		Analyst: HM		Batch: 2531179
Diesel Range Organics (C10-C28)	ND	25.0	1	08/01/25	08/05/25	
Oil Range Organics (C28-C36)	ND	50.0	1	08/01/25	08/05/25	
Surrogate: n-Nonane	99.2 %	61-141		08/01/25	08/05/25	
Anions by EPA 300.0/9056A						
	mg/kg	mg/kg		Analyst: JM		Batch: 2531169
Chloride	25.8	20.0	1	08/01/25	08/04/25	



Sample Data

Safety & Environmental Solutions
1501 W Bender Blvd
Hobbs NM, 88240

Project Name: THISTLE UNIT 22 CTB 2
Project Number: 01058-0007
Project Manager: Leslie Mendenhall

Reported:
8/7/2025 8:24:38AM

SP-11-1'

E507360-11

Analyte	Result	Reporting Limit	Dilution	Prepared	Analyzed	Notes
Volatile Organics by EPA 8021B						
	mg/kg	mg/kg		Analyst: SL		Batch: 2532002
Benzene	ND	0.0250	1	08/04/25	08/05/25	
Ethylbenzene	ND	0.0250	1	08/04/25	08/05/25	
Toluene	ND	0.0250	1	08/04/25	08/05/25	
o-Xylene	ND	0.0250	1	08/04/25	08/05/25	
p,m-Xylene	ND	0.0500	1	08/04/25	08/05/25	
Total Xylenes	ND	0.0250	1	08/04/25	08/05/25	
Surrogate: 4-Bromochlorobenzene-PID		87.7 %	70-130	08/04/25	08/05/25	
Nonhalogenated Organics by EPA 8015D - GRO						
	mg/kg	mg/kg		Analyst: SL		Batch: 2532002
Gasoline Range Organics (C6-C10)	ND	20.0	1	08/04/25	08/05/25	
Surrogate: 1-Chloro-4-fluorobenzene-FID		93.5 %	70-130	08/04/25	08/05/25	
Nonhalogenated Organics by EPA 8015D - DRO/ORO						
	mg/kg	mg/kg		Analyst: HM		Batch: 2531179
Diesel Range Organics (C10-C28)	ND	25.0	1	08/01/25	08/05/25	
Oil Range Organics (C28-C36)	ND	50.0	1	08/01/25	08/05/25	
Surrogate: n-Nonane		96.8 %	61-141	08/01/25	08/05/25	
Anions by EPA 300.0/9056A						
	mg/kg	mg/kg		Analyst: JM		Batch: 2531169
Chloride	23.6	20.0	1	08/01/25	08/04/25	



Sample Data

Safety & Environmental Solutions	Project Name:	THISTLE UNIT 22 CTB 2	Reported: 8/7/2025 8:24:38AM
1501 W Bender Blvd	Project Number:	01058-0007	
Hobbs NM, 88240	Project Manager:	Leslie Mendenhall	

SP-12-1'

E507360-12

Analyte	Result	Reporting Limit	Dilution	Prepared	Analyzed	Notes
Volatile Organics by EPA 8021B	mg/kg	mg/kg	Analyst: SL		Batch: 2532002	
Benzene	ND	0.0250	1	08/04/25	08/05/25	
Ethylbenzene	ND	0.0250	1	08/04/25	08/05/25	
Toluene	ND	0.0250	1	08/04/25	08/05/25	
o-Xylene	ND	0.0250	1	08/04/25	08/05/25	
p,m-Xylene	ND	0.0500	1	08/04/25	08/05/25	
Total Xylenes	ND	0.0250	1	08/04/25	08/05/25	
Surrogate: 4-Bromochlorobenzene-PID	87.0 %	70-130		08/04/25	08/05/25	
Nonhalogenated Organics by EPA 8015D - GRO	mg/kg	mg/kg	Analyst: SL		Batch: 2532002	
Gasoline Range Organics (C6-C10)	ND	20.0	1	08/04/25	08/05/25	
Surrogate: 1-Chloro-4-fluorobenzene-FID	92.3 %	70-130		08/04/25	08/05/25	
Nonhalogenated Organics by EPA 8015D - DRO/ORO	mg/kg	mg/kg	Analyst: HM		Batch: 2531179	
Diesel Range Organics (C10-C28)	ND	25.0	1	08/01/25	08/05/25	
Oil Range Organics (C28-C36)	ND	50.0	1	08/01/25	08/05/25	
Surrogate: n-Nonane	99.7 %	61-141		08/01/25	08/05/25	
Anions by EPA 300.0/9056A	mg/kg	mg/kg	Analyst: JM		Batch: 2531169	
Chloride	34.9	20.0	1	08/01/25	08/04/25	



Sample Data

Safety & Environmental Solutions	Project Name:	THISTLE UNIT 22 CTB 2	Reported:
1501 W Bender Blvd	Project Number:	01058-0007	8/7/2025 8:24:38AM
Hobbs NM, 88240	Project Manager:	Leslie Mendenhall	

SP-13-1'

E507360-13

Analyte	Result	Reporting Limit	Dilution	Prepared	Analyzed	Notes
Volatile Organics by EPA 8021B	mg/kg	mg/kg	Analyst: SL			Batch: 2532002
Benzene	ND	0.0250	1	08/04/25	08/05/25	
Ethylbenzene	ND	0.0250	1	08/04/25	08/05/25	
Toluene	ND	0.0250	1	08/04/25	08/05/25	
o-Xylene	ND	0.0250	1	08/04/25	08/05/25	
p,m-Xylene	ND	0.0500	1	08/04/25	08/05/25	
Total Xylenes	ND	0.0250	1	08/04/25	08/05/25	
Surrogate: 4-Bromochlorobenzene-PID	86.0 %	70-130		08/04/25	08/05/25	
Nonhalogenated Organics by EPA 8015D - GRO	mg/kg	mg/kg	Analyst: SL			Batch: 2532002
Gasoline Range Organics (C6-C10)	ND	20.0	1	08/04/25	08/05/25	
Surrogate: 1-Chloro-4-fluorobenzene-FID	92.6 %	70-130		08/04/25	08/05/25	
Nonhalogenated Organics by EPA 8015D - DRO/ORO	mg/kg	mg/kg	Analyst: HM			Batch: 2531179
Diesel Range Organics (C10-C28)	ND	25.0	1	08/01/25	08/05/25	
Oil Range Organics (C28-C36)	ND	50.0	1	08/01/25	08/05/25	
Surrogate: n-Nonane	107 %	61-141		08/01/25	08/05/25	
Anions by EPA 300.0/9056A	mg/kg	mg/kg	Analyst: JM			Batch: 2531169
Chloride	36.8	20.0	1	08/01/25	08/05/25	



Sample Data

Safety & Environmental Solutions	Project Name:	THISTLE UNIT 22 CTB 2	Reported:
1501 W Bender Blvd	Project Number:	01058-0007	8/7/2025 8:24:38AM
Hobbs NM, 88240	Project Manager:	Leslie Mendenhall	

HP-1-S

E507360-14

Analyte	Result	Reporting Limit	Dilution	Prepared	Analyzed	Notes
Volatiles by EPA 8021B	mg/kg	mg/kg		Analyst: SL		Batch: 2532002
Benzene	ND	0.0250	1	08/04/25	08/05/25	
Ethylbenzene	ND	0.0250	1	08/04/25	08/05/25	
Toluene	ND	0.0250	1	08/04/25	08/05/25	
o-Xylene	ND	0.0250	1	08/04/25	08/05/25	
p,m-Xylene	ND	0.0500	1	08/04/25	08/05/25	
Total Xylenes	ND	0.0250	1	08/04/25	08/05/25	
Surrogate: 4-Bromochlorobenzene-PID	84.8 %	70-130		08/04/25	08/05/25	
Nonhalogenated Organics by EPA 8015D - GRO	mg/kg	mg/kg		Analyst: SL		Batch: 2532002
Gasoline Range Organics (C6-C10)	ND	20.0	1	08/04/25	08/05/25	
Surrogate: 1-Chloro-4-fluorobenzene-FID	92.4 %	70-130		08/04/25	08/05/25	
Nonhalogenated Organics by EPA 8015D - DRO/ORO	mg/kg	mg/kg		Analyst: HM		Batch: 2531179
Diesel Range Organics (C10-C28)	ND	25.0	1	08/01/25	08/05/25	
Oil Range Organics (C28-C36)	ND	50.0	1	08/01/25	08/05/25	
Surrogate: n-Nonane	102 %	61-141		08/01/25	08/05/25	
Anions by EPA 300.0/9056A	mg/kg	mg/kg		Analyst: JM		Batch: 2531169
Chloride	139	20.0	1	08/01/25	08/05/25	



Sample Data

Safety & Environmental Solutions 1501 W Bender Blvd Hobbs NM, 88240	Project Name: THISTLE UNIT 22 CTB 2 Project Number: 01058-0007 Project Manager: Leslie Mendenhall	Reported: 8/7/2025 8:24:38AM
---	---	---------------------------------

HP-2-S

E507360-15

Analyte	Result	Reporting Limit	Dilution	Prepared	Analyzed	Notes
Volatile Organics by EPA 8021B	mg/kg	mg/kg		Analyst: SL		Batch: 2532002
Benzene	ND	0.0250	1	08/04/25	08/05/25	
Ethylbenzene	ND	0.0250	1	08/04/25	08/05/25	
Toluene	ND	0.0250	1	08/04/25	08/05/25	
o-Xylene	ND	0.0250	1	08/04/25	08/05/25	
p,m-Xylene	ND	0.0500	1	08/04/25	08/05/25	
Total Xylenes	ND	0.0250	1	08/04/25	08/05/25	
Surrogate: 4-Bromochlorobenzene-PID	85.7 %	70-130		08/04/25	08/05/25	
Nonhalogenated Organics by EPA 8015D - GRO	mg/kg	mg/kg		Analyst: SL		Batch: 2532002
Gasoline Range Organics (C6-C10)	ND	20.0	1	08/04/25	08/05/25	
Surrogate: 1-Chloro-4-fluorobenzene-FID	92.4 %	70-130		08/04/25	08/05/25	
Nonhalogenated Organics by EPA 8015D - DRO/ORO	mg/kg	mg/kg		Analyst: HM		Batch: 2531179
Diesel Range Organics (C10-C28)	ND	25.0	1	08/01/25	08/05/25	
Oil Range Organics (C28-C36)	ND	50.0	1	08/01/25	08/05/25	
Surrogate: n-Nonane	99.1 %	61-141		08/01/25	08/05/25	
Anions by EPA 300.0/9056A	mg/kg	mg/kg		Analyst: JM		Batch: 2531169
Chloride	134	20.0	1	08/01/25	08/05/25	



Sample Data

Safety & Environmental Solutions	Project Name:	THISTLE UNIT 22 CTB 2	Reported: 8/7/2025 8:24:38AM
1501 W Bender Blvd	Project Number:	01058-0007	
Hobbs NM, 88240	Project Manager:	Leslie Mendenhall	

HP-3-S

E507360-16

Analyte	Result	Reporting Limit	Dilution	Prepared	Analyzed	Notes
Volatile Organics by EPA 8021B	mg/kg	mg/kg	Analyst: SL			Batch: 2532002
Benzene	ND	0.0250	1	08/04/25	08/05/25	
Ethylbenzene	ND	0.0250	1	08/04/25	08/05/25	
Toluene	ND	0.0250	1	08/04/25	08/05/25	
o-Xylene	ND	0.0250	1	08/04/25	08/05/25	
p,m-Xylene	ND	0.0500	1	08/04/25	08/05/25	
Total Xylenes	ND	0.0250	1	08/04/25	08/05/25	
Surrogate: 4-Bromochlorobenzene-PID	86.3 %	70-130		08/04/25	08/05/25	
Nonhalogenated Organics by EPA 8015D - GRO	mg/kg	mg/kg	Analyst: SL			Batch: 2532002
Gasoline Range Organics (C6-C10)	ND	20.0	1	08/04/25	08/05/25	
Surrogate: 1-Chloro-4-fluorobenzene-FID	93.0 %	70-130		08/04/25	08/05/25	
Nonhalogenated Organics by EPA 8015D - DRO/ORO	mg/kg	mg/kg	Analyst: HM			Batch: 2531179
Diesel Range Organics (C10-C28)	ND	25.0	1	08/01/25	08/05/25	
Oil Range Organics (C28-C36)	ND	50.0	1	08/01/25	08/05/25	
Surrogate: n-Nonane	102 %	61-141		08/01/25	08/05/25	
Anions by EPA 300.0/9056A	mg/kg	mg/kg	Analyst: JM			Batch: 2531169
Chloride	41.5	20.0	1	08/01/25	08/05/25	



Sample Data

Safety & Environmental Solutions	Project Name:	THISTLE UNIT 22 CTB 2	Reported: 8/7/2025 8:24:38AM
1501 W Bender Blvd	Project Number:	01058-0007	
Hobbs NM, 88240	Project Manager:	Leslie Mendenhall	

HP-4-S

E507360-17

Analyte	Result	Reporting Limit	Dilution	Prepared	Analyzed	Notes
Volatile Organics by EPA 8021B	mg/kg	mg/kg	Analyst: SL		Batch: 2532002	
Benzene	ND	0.0250	1	08/04/25	08/05/25	
Ethylbenzene	ND	0.0250	1	08/04/25	08/05/25	
Toluene	ND	0.0250	1	08/04/25	08/05/25	
o-Xylene	ND	0.0250	1	08/04/25	08/05/25	
p,m-Xylene	ND	0.0500	1	08/04/25	08/05/25	
Total Xylenes	ND	0.0250	1	08/04/25	08/05/25	
Surrogate: 4-Bromochlorobenzene-PID	84.5 %	70-130		08/04/25	08/05/25	
Nonhalogenated Organics by EPA 8015D - GRO	mg/kg	mg/kg	Analyst: SL		Batch: 2532002	
Gasoline Range Organics (C6-C10)	ND	20.0	1	08/04/25	08/05/25	
Surrogate: 1-Chloro-4-fluorobenzene-FID	92.3 %	70-130		08/04/25	08/05/25	
Nonhalogenated Organics by EPA 8015D - DRO/ORO	mg/kg	mg/kg	Analyst: HM		Batch: 2531179	
Diesel Range Organics (C10-C28)	ND	25.0	1	08/01/25	08/05/25	
Oil Range Organics (C28-C36)	ND	50.0	1	08/01/25	08/05/25	
Surrogate: n-Nonane	102 %	61-141		08/01/25	08/05/25	
Anions by EPA 300.0/9056A	mg/kg	mg/kg	Analyst: JM		Batch: 2531169	
Chloride	59.4	20.0	1	08/01/25	08/05/25	



Sample Data

Safety & Environmental Solutions
1501 W Bender Blvd
Hobbs NM, 88240

Project Name: THISTLE UNIT 22 CTB 2
Project Number: 01058-0007
Project Manager: Leslie Mendenhall

Reported:
8/7/2025 8:24:38AM

HP-5-S

E507360-18

Analyte	Result	Reporting Limit	Dilution	Prepared	Analyzed	Notes
Volatiles Organics by EPA 8021B						
	mg/kg	mg/kg		Analyst: SL		Batch: 2532002
Benzene	ND	0.0250	1	08/04/25	08/05/25	
Ethylbenzene	ND	0.0250	1	08/04/25	08/05/25	
Toluene	ND	0.0250	1	08/04/25	08/05/25	
o-Xylene	ND	0.0250	1	08/04/25	08/05/25	
p,m-Xylene	ND	0.0500	1	08/04/25	08/05/25	
Total Xylenes	ND	0.0250	1	08/04/25	08/05/25	
Surrogate: 4-Bromochlorobenzene-PID	86.0 %	70-130		08/04/25	08/05/25	
Nonhalogenated Organics by EPA 8015D - GRO						
	mg/kg	mg/kg		Analyst: SL		Batch: 2532002
Gasoline Range Organics (C6-C10)	ND	20.0	1	08/04/25	08/05/25	
Surrogate: 1-Chloro-4-fluorobenzene-FID	91.8 %	70-130		08/04/25	08/05/25	
Nonhalogenated Organics by EPA 8015D - DRO/ORO						
	mg/kg	mg/kg		Analyst: HM		Batch: 2531179
Diesel Range Organics (C10-C28)	ND	25.0	1	08/01/25	08/05/25	
Oil Range Organics (C28-C36)	ND	50.0	1	08/01/25	08/05/25	
Surrogate: n-Nonane	102 %	61-141		08/01/25	08/05/25	
Anions by EPA 300.0/9056A						
	mg/kg	mg/kg		Analyst: JM		Batch: 2531169
Chloride	61.8	20.0	1	08/01/25	08/05/25	



Sample Data

Safety & Environmental Solutions	Project Name:	THISTLE UNIT 22 CTB 2	Reported: 8/7/2025 8:24:38AM
1501 W Bender Blvd	Project Number:	01058-0007	
Hobbs NM, 88240	Project Manager:	Leslie Mendenhall	

HP-6-S

E507360-19

Analyte	Result	Reporting Limit	Dilution	Prepared	Analyzed	Notes
Volatile Organics by EPA 8021B	mg/kg	mg/kg	Analyst: SL		Batch: 2532002	
Benzene	ND	0.0250	1	08/04/25	08/05/25	
Ethylbenzene	ND	0.0250	1	08/04/25	08/05/25	
Toluene	ND	0.0250	1	08/04/25	08/05/25	
o-Xylene	ND	0.0250	1	08/04/25	08/05/25	
p,m-Xylene	ND	0.0500	1	08/04/25	08/05/25	
Total Xylenes	ND	0.0250	1	08/04/25	08/05/25	
Surrogate: 4-Bromochlorobenzene-PID	86.1 %	70-130		08/04/25	08/05/25	
Nonhalogenated Organics by EPA 8015D - GRO	mg/kg	mg/kg	Analyst: SL		Batch: 2532002	
Gasoline Range Organics (C6-C10)	ND	20.0	1	08/04/25	08/05/25	
Surrogate: 1-Chloro-4-fluorobenzene-FID	92.7 %	70-130		08/04/25	08/05/25	
Nonhalogenated Organics by EPA 8015D - DRO/ORO	mg/kg	mg/kg	Analyst: HM		Batch: 2531179	
Diesel Range Organics (C10-C28)	ND	25.0	1	08/01/25	08/05/25	
Oil Range Organics (C28-C36)	ND	50.0	1	08/01/25	08/05/25	
Surrogate: n-Nonane	99.1 %	61-141		08/01/25	08/05/25	
Anions by EPA 300.0/9056A	mg/kg	mg/kg	Analyst: JM		Batch: 2531169	
Chloride	61.6	20.0	1	08/01/25	08/05/25	



Sample Data

Safety & Environmental Solutions 1501 W Bender Blvd Hobbs NM, 88240	Project Name: THISTLE UNIT 22 CTB 2 Project Number: 01058-0007 Project Manager: Leslie Mendenhall	Reported: 8/7/2025 8:24:38AM
---	---	---------------------------------

HP-7-S

E507360-20

Analyte	Result	Reporting Limit	Dilution	Prepared	Analyzed	Notes
Volatile Organics by EPA 8021B	mg/kg	mg/kg	Analyst: SL			Batch: 2532002
Benzene	ND	0.0250	1	08/04/25	08/05/25	
Ethylbenzene	ND	0.0250	1	08/04/25	08/05/25	
Toluene	ND	0.0250	1	08/04/25	08/05/25	
o-Xylene	ND	0.0250	1	08/04/25	08/05/25	
p,m-Xylene	ND	0.0500	1	08/04/25	08/05/25	
Total Xylenes	ND	0.0250	1	08/04/25	08/05/25	
Surrogate: 4-Bromochlorobenzene-PID	85.1 %	70-130		08/04/25	08/05/25	
Nonhalogenated Organics by EPA 8015D - GRO	mg/kg	mg/kg	Analyst: SL			Batch: 2532002
Gasoline Range Organics (C6-C10)	ND	20.0	1	08/04/25	08/05/25	
Surrogate: 1-Chloro-4-fluorobenzene-FID	92.9 %	70-130		08/04/25	08/05/25	
Nonhalogenated Organics by EPA 8015D - DRO/ORO	mg/kg	mg/kg	Analyst: HM			Batch: 2531179
Diesel Range Organics (C10-C28)	ND	25.0	1	08/01/25	08/05/25	
Oil Range Organics (C28-C36)	ND	50.0	1	08/01/25	08/05/25	
Surrogate: n-Nonane	99.5 %	61-141		08/01/25	08/05/25	
Anions by EPA 300.0/9056A	mg/kg	mg/kg	Analyst: JM			Batch: 2531169
Chloride	129	20.0	1	08/01/25	08/05/25	



QC Summary Data

Safety & Environmental Solutions	Project Name:	THISTLE UNIT 22 CTB 2	Reported:
1501 W Bender Blvd	Project Number:	01058-0007	
Hobbs NM, 88240	Project Manager:	Leslie Mendenhall	8/7/2025 8:24:38AM

Volatile Organics by EPA 8021B

Analyst: SL

Analyte	Result mg/kg	Reporting Limit mg/kg	Spike Level mg/kg	Source Result mg/kg	Rec %	Rec Limits %	RPD %	RPD Limit %	Notes
---------	-----------------	-----------------------------	-------------------------	---------------------------	----------	--------------------	----------	-------------------	-------

Blank (2532002-BLK1)

Prepared: 08/04/25 Analyzed: 08/05/25

Benzene	ND	0.0250							
Ethylbenzene	ND	0.0250							
Toluene	ND	0.0250							
o-Xylene	ND	0.0250							
p,m-Xylene	ND	0.0500							
Total Xylenes	ND	0.0250							
Surrogate: 4-Bromochlorobenzene-PID	6.84		8.00		85.5	70-130			

LCS (2532002-BS1)

Prepared: 08/04/25 Analyzed: 08/05/25

Benzene	5.37	0.0250	5.00		107	70-130			
Ethylbenzene	5.32	0.0250	5.00		106	70-130			
Toluene	5.38	0.0250	5.00		108	70-130			
o-Xylene	5.25	0.0250	5.00		105	70-130			
p,m-Xylene	10.8	0.0500	10.0		108	70-130			
Total Xylenes	16.0	0.0250	15.0		107	70-130			
Surrogate: 4-Bromochlorobenzene-PID	6.92		8.00		86.5	70-130			

Matrix Spike (2532002-MS1)

Source: E507360-04

Prepared: 08/04/25 Analyzed: 08/05/25

Benzene	5.49	0.0250	5.00	ND	110	70-130			
Ethylbenzene	5.44	0.0250	5.00	ND	109	70-130			
Toluene	5.49	0.0250	5.00	ND	110	70-130			
o-Xylene	5.38	0.0250	5.00	ND	108	70-130			
p,m-Xylene	11.0	0.0500	10.0	ND	110	70-130			
Total Xylenes	16.4	0.0250	15.0	ND	109	70-130			
Surrogate: 4-Bromochlorobenzene-PID	7.14		8.00		89.3	70-130			

Matrix Spike Dup (2532002-MSD1)

Source: E507360-04

Prepared: 08/04/25 Analyzed: 08/05/25

Benzene	5.65	0.0250	5.00	ND	113	70-130	2.89	27	
Ethylbenzene	5.60	0.0250	5.00	ND	112	70-130	2.94	26	
Toluene	5.65	0.0250	5.00	ND	113	70-130	2.84	20	
o-Xylene	5.53	0.0250	5.00	ND	111	70-130	2.71	25	
p,m-Xylene	11.3	0.0500	10.0	ND	113	70-130	2.86	23	
Total Xylenes	16.8	0.0250	15.0	ND	112	70-130	2.81	26	
Surrogate: 4-Bromochlorobenzene-PID	6.95		8.00		86.9	70-130			



QC Summary Data

Safety & Environmental Solutions	Project Name:	THISTLE UNIT 22 CTB 2	Reported:
1501 W Bender Blvd	Project Number:	01058-0007	
Hobbs NM, 88240	Project Manager:	Leslie Mendenhall	8/7/2025 8:24:38AM

Nonhalogenated Organics by EPA 8015D - GRO

Analyst: SL

Analyte	Result mg/kg	Reporting Limit mg/kg	Spike Level mg/kg	Source Result mg/kg	Rec %	Rec Limits %	RPD %	RPD Limit %	Notes
---------	-----------------	-----------------------------	-------------------------	---------------------------	----------	--------------------	----------	-------------------	-------

Blank (2532002-BLK1)

Prepared: 08/04/25 Analyzed: 08/05/25

Gasoline Range Organics (C6-C10)	ND	20.0							
Surrogate: 1-Chloro-4-fluorobenzene-FID	7.15		8.00		89.4	70-130			

LCS (2532002-BS2)

Prepared: 08/04/25 Analyzed: 08/05/25

Gasoline Range Organics (C6-C10)	49.9	20.0	50.0		99.8	70-130			
Surrogate: 1-Chloro-4-fluorobenzene-FID	7.34		8.00		91.8	70-130			

Matrix Spike (2532002-MS2)

Source: E507360-04

Prepared: 08/04/25 Analyzed: 08/05/25

Gasoline Range Organics (C6-C10)	49.2	20.0	50.0	ND	98.3	70-130			
Surrogate: 1-Chloro-4-fluorobenzene-FID	7.33		8.00		91.6	70-130			

Matrix Spike Dup (2532002-MSD2)

Source: E507360-04

Prepared: 08/04/25 Analyzed: 08/05/25

Gasoline Range Organics (C6-C10)	50.5	20.0	50.0	ND	101	70-130	2.67	20	
Surrogate: 1-Chloro-4-fluorobenzene-FID	7.38		8.00		92.2	70-130			



QC Summary Data

Safety & Environmental Solutions	Project Name:	THISTLE UNIT 22 CTB 2	Reported:
1501 W Bender Blvd	Project Number:	01058-0007	
Hobbs NM, 88240	Project Manager:	Leslie Mendenhall	8/7/2025 8:24:38AM

Nonhalogenated Organics by EPA 8015D - DRO/ORO

Analyst: HM

Analyte	Result mg/kg	Reporting Limit mg/kg	Spike Level mg/kg	Source Result mg/kg	Rec %	Rec Limits %	RPD %	RPD Limit %	Notes
---------	-----------------	-----------------------------	-------------------------	---------------------------	----------	--------------------	----------	-------------------	-------

Blank (2531179-BLK1)

Prepared: 08/01/25 Analyzed: 08/04/25

Diesel Range Organics (C10-C28)	ND	25.0							
Oil Range Organics (C28-C36)	ND	50.0							
Surrogate: n-Nonane	48.4		50.0		96.7	61-141			

LCS (2531179-BS1)

Prepared: 08/01/25 Analyzed: 08/04/25

Diesel Range Organics (C10-C28)	282	25.0	250		113	66-144			
Surrogate: n-Nonane	51.6		50.0		103	61-141			

Matrix Spike (2531179-MS1)

Source: E507360-13

Prepared: 08/01/25 Analyzed: 08/04/25

Diesel Range Organics (C10-C28)	279	25.0	250	ND	111	56-156			
Surrogate: n-Nonane	50.5		50.0		101	61-141			

Matrix Spike Dup (2531179-MSD1)

Source: E507360-13

Prepared: 08/01/25 Analyzed: 08/04/25

Diesel Range Organics (C10-C28)	279	25.0	250	ND	112	56-156	0.250	20	
Surrogate: n-Nonane	50.7		50.0		101	61-141			



QC Summary Data

Safety & Environmental Solutions	Project Name:	THISTLE UNIT 22 CTB 2	Reported:
1501 W Bender Blvd	Project Number:	01058-0007	
Hobbs NM, 88240	Project Manager:	Leslie Mendenhall	8/7/2025 8:24:38AM

Anions by EPA 300.0/9056A

Analyst: JM

Analyte	Result mg/kg	Reporting Limit mg/kg	Spike Level mg/kg	Source Result mg/kg	Rec %	Rec Limits %	RPD %	RPD Limit %	Notes
---------	-----------------	-----------------------------	-------------------------	---------------------------	----------	--------------------	----------	-------------------	-------

Blank (2531169-BLK1)

Prepared: 08/01/25 Analyzed: 08/04/25

Chloride ND 20.0

LCS (2531169-BS1)

Prepared: 08/01/25 Analyzed: 08/04/25

Chloride 253 20.0 250 101 90-110

Matrix Spike (2531169-MS1)

Source: E507360-10

Prepared: 08/01/25 Analyzed: 08/04/25

Chloride 279 20.0 250 25.8 101 80-120

Matrix Spike Dup (2531169-MSD1)

Source: E507360-10

Prepared: 08/01/25 Analyzed: 08/04/25

Chloride 281 20.0 250 25.8 102 80-120 0.836 20

QC Summary Report Comment:

Calculations are based off of the raw (non-rounded) data. However, for reporting purposes all QC data is rounded to three significant figures. Therefore, hand calculated values may differ slightly.



Definitions and Notes

Safety & Environmental Solutions	Project Name:	THISTLE UNIT 22 CTB 2	
1501 W Bender Blvd	Project Number:	01058-0007	Reported:
Hobbs NM, 88240	Project Manager:	Leslie Mendenhall	08/07/25 08:24

ND Analyte NOT DETECTED at or above the reporting limit

NR Not Reported

RPD Relative Percent Difference

DNI Did Not Ignite

DNR Did not react with the addition of acid or base.

Note (1): Methods marked with ** are non-accredited methods.

Note (2): Soil data is reported on an "as received" weight basis, unless reported otherwise.



Client Information				Invoice Information				Lab Use Only				TAT				State			
Client: Safety & Environmental Solutions Project Name: 1415 L E J A + 22 CTS 2 Project Manager: Leslie Mendenhall Address: 1501 W. Bender Blvd City, State, Zip: Hobbs, NM 88240 Phone: (575) 973-5675 or (575) 397-0510 Email: lmendenhall@sesi-nm.com				Company: Devon Energy Address: City, State, Zip: Phone: Email: Miscellaneous: W20 # 21609 252				Lab WO# E501300 Lab Number 010580007				1D 2D 3D Std X				NIM CO UT TX X			
Sample Information																			
Time Sampled	Date Sampled	Matrix	No. of Containers	Sample ID	Depth	Lab Number	GRD/ORD by 8015	GRD/ORD by 8015	WOC by 8021	WOC by 8260	Chloride 300.0	IC10 1005 - TX	ICRA & Metals	9500C - NM	9500C - TX	Remarks			
8:55	7-30-25	S	1	SP-11-1'	1'	11	X	X	X	X	X					3.4			
9:02	7-30-25	S	1	SP-12-1'	1'	12	X	X	X	X	X					3.0			
9:07	7-30-25	S	1	SP-13-1'	1'	13	X	X	X	X	X					2.8			
9:47	7-30-25	S	1	HP-1-5	0	14	X	X	X	X	X					2.6			
9:50	7-30-25	S	1	HP-2-5	0	15	X	X	X	X	X					3.2			
9:54	7-30-25	S	1	HP-3-5	0	16	X	X	X	X	X					2.3			
9:57	7-30-25	S	1	HP-4-5	0	17	X	X	X	X	X					2.8			
10:00	7-30-25	S	1	HP-5-5	0	18	X	X	X	X	X					2.6			
10:04	7-30-25	S	1	HP-6-5	0	19	X	X	X	X	X					3.4			
10:07	7-30-25	S	1	HP-7-5	0	20	X	X	X	X	X					3.2			
Additional Instructions: Amatin Results to augustin@sesi-nm.com / slonko@sesi-nm.com / leon@sesi-nm.com / lmendenhall@sesi-nm.com / brodriguez@sesi-nm.com I, (field sampler), attest to the validity and authenticity of this sample. I am aware that tampering with or intentionally mislabeling the sample location, date or time of collection is considered fraud and may be grounds for legal action.																			
Sampled by: Emma J. Davis																			
Requisitioned by: (Signature) Leslie Mendenhall				Date 7/31/25		Time 10:41 AM		Received by: (Signature) Michelle Gonzales		Date 7-31-25		Time 7:31:25		Samples requiring thermal preservation must be received on the day they are sampled or received packed on ice at a temp above 0 but less than 6°C on subsequent days.					
Requisitioned by: (Signature) Michelle Gonzales				Date 7-31-25		Time 1445		Received by: (Signature) Mariaca Gonzales		Date 7-31-25		Time 1445		Samples requiring thermal preservation must be received on the day they are sampled or received packed on ice at a temp above 0 but less than 6°C on subsequent days.					
Requisitioned by: (Signature) Mariaca Gonzales				Date 7-31-25		Time 1825		Received by: (Signature) Mariaca Gonzales		Date 7-31-25		Time 1825		Samples requiring thermal preservation must be received on the day they are sampled or received packed on ice at a temp above 0 but less than 6°C on subsequent days.					
Requisitioned by: (Signature) A. J.				Date 7-31-25		Time 2230		Received by: (Signature) Mariaca Gonzales		Date 8-1-25		Time 800		Lab Use Only Received on ice: Y N					
Requisitioned by: (Signature)				Date		Time		Received by: (Signature)		Date		Time		Lab Use Only Received on ice: Y N					
Sample Matrix: S - Soil, SD - Solid, SG - Sludge, A - Aqueous, O - Other																			
Note: Samples are discarded 14 days after results are reported unless other arrangements are made. Hazardous samples will be returned to client or disposed of at the client expense. The report for the analysis of the above samples is available only to those samples received by the laboratory with this COC. The liability of the laboratory is limited to the amount paid for on the report.																			

Envirotech Analytical Laboratory

Printed: 8/1/2025 9:25:36AM

Sample Receipt Checklist (SRC)

Instructions: Please take note of any NO checkmarks.

If we receive no response concerning these items within 24 hours of the date of this notice, all the samples will be analyzed as requested.

Client:	Safety & Environmental Solutions	Date Received:	08/01/25 08:00	Work Order ID:	E507360
Phone:	(575) 397-0510	Date Logged In:	07/31/25 15:27	Logged In By:	Caitlin Mars
Email:	lmendenhall@scsi-nm.com	Due Date:	08/07/25 17:00 (4 day TAT)		

Chain of Custody (COC)

1. Does the sample ID match the COC? Yes
 2. Does the number of samples per sampling site location match the COC? Yes
 3. Were samples dropped off by client or carrier? Yes
 4. Was the COC complete, i.e., signatures, dates/times, requested analyses? Yes
 5. Were all samples received within holding time? Yes
- Note: Analysis, such as pH which should be conducted in the field, i.e., 15 minute hold time, are not included in this discussion.

Carrier: COURIERComments/ResolutionSample Turn Around Time (TAT)

6. Did the COC indicate standard TAT, or Expedited TAT? Yes

Sample Cooler

7. Was a sample cooler received? Yes
 8. If yes, was cooler received in good condition? Yes
 9. Was the sample(s) received intact, i.e., not broken? Yes
 10. Were custody/security seals present? No
 11. If yes, were custody/security seals intact? NA
 12. Was the sample received on ice? Yes
- Note: Thermal preservation is not required, if samples are received within 15 minutes of sampling
13. See COC for individual sample temps. Samples outside of 0°C-6°C will be recorded in comments.

Sample Container

14. Are aqueous VOC samples present? No
15. Are VOC samples collected in VOA Vials? NA
16. Is the head space less than 6-8 mm (pea sized or less)? NA
17. Was a trip blank (TB) included for VOC analyses? NA
18. Are non-VOC samples collected in the correct containers? Yes
19. Is the appropriate volume/weight or number of sample containers collected? Yes

Field Label

20. Were field sample labels filled out with the minimum information:
 - Sample ID? Yes
 - Date/Time Collected? Yes
 - Collectors name? No

Sample Preservation

21. Does the COC or field labels indicate the samples were preserved? No
22. Are sample(s) correctly preserved? NA
24. Is lab filtration required and/or requested for dissolved metals? No

Multiphase Sample Matrix

26. Does the sample have more than one phase, i.e., multiphase? No
27. If yes, does the COC specify which phase(s) is to be analyzed? NA

Subcontract Laboratory

28. Are samples required to get sent to a subcontract laboratory? No
29. Was a subcontract laboratory specified by the client and if so who? NA Subcontract Lab: NA

Client Instruction

Signature of client authorizing changes to the COC or sample disposition.

Date



envirotech Inc.

Report to:

Leslie Mendenhall



5796 U.S. Hwy 64
Farmington, NM 87401

Phone: (505) 632-1881
Envirotech-inc.com



envirotech

Practical Solutions for a Better Tomorrow

Analytical Report

Safety & Environmental Solutions

Project Name: THISTLE UNIT 22 CTB 2

Work Order: E508316

Job Number: 01058-0007

Received: 8/28/2025

Revision: 1

Report Reviewed By:

Walter Hinchman
Laboratory Director
9/3/25

Envirotech Inc. certifies the test results meet all requirements of TNI unless noted otherwise.
Statement of Data Authenticity: Envirotech Inc. attests the data reported has not been altered in any way.
Partial or incomplete reproduction of this report is prohibited, unless approved by Envirotech Inc.
Envirotech Inc. holds the Utah TNI certification NM00979 for data reported.
Envirotech Inc. holds the Texas TNI certification T104704557 for data reported.

Date Reported: 9/3/25

Leslie Mendenhall
1501 W Bender Blvd
Hobbs, NM 88240



Project Name: THISTLE UNIT 22 CTB 2
Workorder: E508316
Date Received: 8/28/2025 7:00:00AM

Leslie Mendenhall,

Thank you for choosing Envirotech, Inc. as your analytical testing laboratory for the sample(s) received on, 8/28/2025 7:00:00AM, under the Project Name: THISTLE UNIT 22 CTB 2.

The analytical test results summarized in this report with the Project Name: THISTLE UNIT 22 CTB 2 apply to the individual samples collected, identified and submitted bearing the project name on the enclosed chain-of-custody. Subcontracted sample analyses not conducted by Envirotech, Inc., are attached in full as issued by the subcontract laboratory.

Please review the Chain-of-Custody (COC) and Sample Receipt Checklist (SRC) for any issues regarding sample receipt temperature, containers, preservation etc. To best understand your test results, review the entire report summarizing your sample data and the associated quality control batch data.

All reported data in this analytical report were analyzed according to the referenced method(s) and are in compliance with the latest NELAC/TNI standards, unless otherwise noted. Samples or analytical quality control parameters not meeting specific QC criteria are qualified with a data flag. Data flag definitions are located in the Notes and Definitions section of this analytical report.

If you have any questions concerning this report, please feel free to contact Envirotech, Inc.

Respectfully,

Walter Hinchman
Laboratory Director
Office: 505-632-1881
Cell: 775-287-1762
whinchman@envirotech-inc.com

Raina Schwanz
Laboratory Administrator
Office: 505-632-1881
rainaschwanz@envirotech-inc.com

Field Offices:

Southern New Mexico Area

Lynn Jarboe
Laboratory Technical Representative
Office: 505-421-LABS(5227)
Cell: 505-320-4759
ljjarboe@envirotech-inc.com

Michelle Gonzales
Client Representative
Office: 505-421-LABS(5227)
Cell: 505-947-8222
mgonzaless@envirotech-inc.com

Envirotech Web Address: www.envirotech-inc.com

Table of Contents

Title Page	1
Cover Page	2
Table of Contents	3
Sample Summary	4
Sample Data	5
BF-1 S	5
QC Summary Data	6
QC - Volatile Organics by EPA 8021B	6
QC - Nonhalogenated Organics by EPA 8015D - GRO	7
QC - Nonhalogenated Organics by EPA 8015D - DRO/ORO	8
QC - Anions by EPA 300.0/9056A	9
Definitions and Notes	10
Chain of Custody etc.	11

Sample Summary

Safety & Environmental Solutions 1501 W Bender Blvd Hobbs NM, 88240	Project Name: THISTLE UNIT 22 CTB 2 Project Number: 01058-0007 Project Manager: Leslie Mendenhall	Reported: 09/03/25 15:40
---	---	-----------------------------

Client Sample ID	Lab Sample ID	Matrix	Sampled	Received	Container
BF-1 S	E508316-01A	Soil	08/26/25	08/28/25	Glass Jar, 2 oz.



Sample Data

Safety & Environmental Solutions 1501 W Bender Blvd Hobbs NM, 88240	Project Name: THISTLE UNIT 22 CTB 2 Project Number: 01058-0007 Project Manager: Leslie Mendenhall	Reported: 9/3/2025 3:40:39PM
---	---	---------------------------------

BF-1 S

E508316-01

Analyte	Result	Reporting Limit	Dilution	Prepared	Analyzed	Notes
Volatile Organics by EPA 8021B	mg/kg	mg/kg		Analyst: SL		Batch: 2535104
Benzene	ND	0.0250	1	08/28/25	08/29/25	
Ethylbenzene	ND	0.0250	1	08/28/25	08/29/25	
Toluene	ND	0.0250	1	08/28/25	08/29/25	
o-Xylene	ND	0.0250	1	08/28/25	08/29/25	
p,m-Xylene	ND	0.0500	1	08/28/25	08/29/25	
Total Xylenes	ND	0.0250	1	08/28/25	08/29/25	
Surrogate: 4-Bromochlorobenzene-PID	102 %	70-130		08/28/25	08/29/25	
Nonhalogenated Organics by EPA 8015D - GRO	mg/kg	mg/kg		Analyst: SL		Batch: 2535104
Gasoline Range Organics (C6-C10)	ND	20.0	1	08/28/25	08/29/25	
Surrogate: 1-Chloro-4-fluorobenzene-FID	104 %	70-130		08/28/25	08/29/25	
Nonhalogenated Organics by EPA 8015D - DRO/ORO	mg/kg	mg/kg		Analyst: KH		Batch: 2535100
Diesel Range Organics (C10-C28)	ND	25.0	1	08/28/25	08/29/25	
Oil Range Organics (C28-C36)	ND	50.0	1	08/28/25	08/29/25	
Surrogate: n-Nonane	94.6 %	61-141		08/28/25	08/29/25	
Anions by EPA 300.0/9056A	mg/kg	mg/kg		Analyst: DT		Batch: 2535106
Chloride	52.8	20.0	1	08/28/25	08/29/25	



QC Summary Data

Safety & Environmental Solutions	Project Name:	THISTLE UNIT 22 CTB 2	Reported:
1501 W Bender Blvd	Project Number:	01058-0007	
Hobbs NM, 88240	Project Manager:	Leslie Mendenhall	9/3/2025 3:40:39PM

Volatile Organics by EPA 8021B

Analyst: SL

Analyte	Result mg/kg	Reporting Limit mg/kg	Spike Level mg/kg	Source Result mg/kg	Rec %	Rec Limits %	RPD %	RPD Limit %	Notes
---------	-----------------	-----------------------------	-------------------------	---------------------------	----------	--------------------	----------	-------------------	-------

Blank (2535104-BLK1)

Prepared: 08/28/25 Analyzed: 08/29/25

Benzene	ND	0.0250							
Ethylbenzene	ND	0.0250							
Toluene	ND	0.0250							
o-Xylene	ND	0.0250							
p,m-Xylene	ND	0.0500							
Total Xylenes	ND	0.0250							
Surrogate: 4-Bromochlorobenzene-PID	8.19		8.00		102	70-130			

LCS (2535104-BS1)

Prepared: 08/28/25 Analyzed: 08/29/25

Benzene	4.69	0.0250	5.00		93.8	70-130			
Ethylbenzene	4.57	0.0250	5.00		91.4	70-130			
Toluene	4.66	0.0250	5.00		93.3	70-130			
o-Xylene	4.65	0.0250	5.00		92.9	70-130			
p,m-Xylene	9.31	0.0500	10.0		93.1	70-130			
Total Xylenes	14.0	0.0250	15.0		93.0	70-130			
Surrogate: 4-Bromochlorobenzene-PID	8.13		8.00		102	70-130			

Matrix Spike (2535104-MS1)

Source: E508315-03

Prepared: 08/28/25 Analyzed: 08/29/25

Benzene	4.99	0.0250	5.00	ND	99.9	70-130			
Ethylbenzene	4.94	0.0250	5.00	ND	98.9	70-130			
Toluene	4.98	0.0250	5.00	ND	99.6	70-130			
o-Xylene	4.97	0.0250	5.00	ND	99.5	70-130			
p,m-Xylene	10.0	0.0500	10.0	ND	100	70-130			
Total Xylenes	15.0	0.0250	15.0	ND	100	70-130			
Surrogate: 4-Bromochlorobenzene-PID	7.78		8.00		97.2	70-130			

Matrix Spike Dup (2535104-MSD1)

Source: E508315-03

Prepared: 08/28/25 Analyzed: 08/29/25

Benzene	4.76	0.0250	5.00	ND	95.3	70-130	4.69	27	
Ethylbenzene	4.75	0.0250	5.00	ND	95.1	70-130	3.94	26	
Toluene	4.77	0.0250	5.00	ND	95.4	70-130	4.29	20	
o-Xylene	4.79	0.0250	5.00	ND	95.8	70-130	3.75	25	
p,m-Xylene	9.67	0.0500	10.0	ND	96.7	70-130	3.85	23	
Total Xylenes	14.5	0.0250	15.0	ND	96.4	70-130	3.82	26	
Surrogate: 4-Bromochlorobenzene-PID	7.81		8.00		97.6	70-130			



QC Summary Data

Safety & Environmental Solutions	Project Name:	THISTLE UNIT 22 CTB 2	Reported:
1501 W Bender Blvd	Project Number:	01058-0007	
Hobbs NM, 88240	Project Manager:	Leslie Mendenhall	9/3/2025 3:40:39PM

Nonhalogenated Organics by EPA 8015D - GRO

Analyst: SL

Analyte	Result mg/kg	Reporting Limit mg/kg	Spike Level mg/kg	Source Result mg/kg	Rec %	Rec Limits %	RPD %	RPD Limit %	Notes
---------	-----------------	-----------------------------	-------------------------	---------------------------	----------	--------------------	----------	-------------------	-------

Blank (2535104-BLK1)

Prepared: 08/28/25 Analyzed: 08/29/25

Gasoline Range Organics (C6-C10)	ND	20.0							
Surrogate: 1-Chloro-4-fluorobenzene-FID	8.22		8.00		103	70-130			

LCS (2535104-BS2)

Prepared: 08/28/25 Analyzed: 08/29/25

Gasoline Range Organics (C6-C10)	53.8	20.0	50.0		108	70-130			
Surrogate: 1-Chloro-4-fluorobenzene-FID	8.51		8.00		106	70-130			

Matrix Spike (2535104-MS2)

Source: E508315-03

Prepared: 08/28/25 Analyzed: 08/29/25

Gasoline Range Organics (C6-C10)	46.2	20.0	50.0	ND	92.4	70-130			
Surrogate: 1-Chloro-4-fluorobenzene-FID	8.23		8.00		103	70-130			

Matrix Spike Dup (2535104-MSD2)

Source: E508315-03

Prepared: 08/28/25 Analyzed: 08/29/25

Gasoline Range Organics (C6-C10)	56.0	20.0	50.0	ND	112	70-130	19.2	20	
Surrogate: 1-Chloro-4-fluorobenzene-FID	8.27		8.00		103	70-130			



QC Summary Data

Safety & Environmental Solutions	Project Name:	THISTLE UNIT 22 CTB 2	Reported:
1501 W Bender Blvd	Project Number:	01058-0007	
Hobbs NM, 88240	Project Manager:	Leslie Mendenhall	9/3/2025 3:40:39PM

Nonhalogenated Organics by EPA 8015D - DRO/ORO

Analyst: KH

Analyte	Result mg/kg	Reporting Limit mg/kg	Spike Level mg/kg	Source Result mg/kg	Rec %	Rec Limits %	RPD %	RPD Limit %	Notes
---------	-----------------	-----------------------------	-------------------------	---------------------------	----------	--------------------	----------	-------------------	-------

Blank (2535100-BLK1)

Prepared: 08/28/25 Analyzed: 08/28/25

Diesel Range Organics (C10-C28)	ND	25.0							
Oil Range Organics (C28-C36)	ND	50.0							
Surrogate: n-Nonane	46.8		50.0		93.5	61-141			

LCS (2535100-BS1)

Prepared: 08/28/25 Analyzed: 08/28/25

Diesel Range Organics (C10-C28)	236	25.0	250		94.5	66-144			
Surrogate: n-Nonane	47.2		50.0		94.4	61-141			

Matrix Spike (2535100-MS1)

Source: E508310-04

Prepared: 08/28/25 Analyzed: 08/28/25

Diesel Range Organics (C10-C28)	257	25.0	250	30.3	90.8	56-156			
Surrogate: n-Nonane	48.4		50.0		96.9	61-141			

Matrix Spike Dup (2535100-MSD1)

Source: E508310-04

Prepared: 08/28/25 Analyzed: 08/28/25

Diesel Range Organics (C10-C28)	260	25.0	250	30.3	91.9	56-156	1.06	20	
Surrogate: n-Nonane	47.8		50.0		95.6	61-141			



QC Summary Data

Safety & Environmental Solutions	Project Name:	THISTLE UNIT 22 CTB 2	Reported:
1501 W Bender Blvd	Project Number:	01058-0007	
Hobbs NM, 88240	Project Manager:	Leslie Mendenhall	9/3/2025 3:40:39PM

Anions by EPA 300.0/9056A

Analyst: DT

Analyte	Result mg/kg	Reporting Limit mg/kg	Spike Level mg/kg	Source Result mg/kg	Rec %	Rec Limits %	RPD %	RPD Limit %	Notes
---------	-----------------	-----------------------------	-------------------------	---------------------------	----------	--------------------	----------	-------------------	-------

Blank (2535106-BLK1)

Prepared: 08/28/25 Analyzed: 08/28/25

Chloride ND 20.0

LCS (2535106-BS1)

Prepared: 08/28/25 Analyzed: 08/28/25

Chloride 256 20.0 250 102 90-110

Matrix Spike (2535106-MS1)

Source: E508309-06

Prepared: 08/28/25 Analyzed: 08/28/25

Chloride 256 20.0 250 ND 102 80-120

Matrix Spike Dup (2535106-MSD1)

Source: E508309-06

Prepared: 08/28/25 Analyzed: 08/28/25

Chloride 255 20.0 250 ND 102 80-120 0.424 20

QC Summary Report Comment:

Calculations are based off of the raw (non-rounded) data. However, for reporting purposes all QC data is rounded to three significant figures. Therefore, hand calculated values may differ slightly.



Definitions and Notes

Safety & Environmental Solutions	Project Name:	THISTLE UNIT 22 CTB 2	
1501 W Bender Blvd	Project Number:	01058-0007	Reported:
Hobbs NM, 88240	Project Manager:	Leslie Mendenhall	09/03/25 15:40

ND Analyte NOT DETECTED at or above the reporting limit

NR Not Reported

RPD Relative Percent Difference

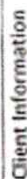
DNI Did Not Ignite

DNR Did not react with the addition of acid or base.

Note (1): Methods marked with ** are non-accredited methods.

Note (2): Soil data is reported on an "as received" weight basis, unless reported otherwise.





Chain of Custody

[illegible]

Envirotech Analytical Laboratory

Printed: 8/28/2025 9:25:11AM

Sample Receipt Checklist (SRC)

Instructions: Please take note of any NO checkmarks.

If we receive no response concerning these items within 24 hours of the date of this notice, all the samples will be analyzed as requested.

Client:	Safety & Environmental Solutions	Date Received:	08/28/25 07:00	Work Order ID:	E508316
Phone:	(575) 397-0510	Date Logged In:	08/27/25 16:11	Logged In By:	Noe Soto
Email:	lmendenhall@sesi-nm.com	Due Date:	09/04/25 07:00 (4 day TAT)		

Chain of Custody (COC)

1. Does the sample ID match the COC? Yes
 2. Does the number of samples per sampling site location match the COC? Yes
 3. Were samples dropped off by client or carrier? Yes
 4. Was the COC complete, i.e., signatures, dates/times, requested analyses? Yes
 5. Were all samples received within holding time? Yes
- Note: Analysis, such as pH which should be conducted in the field, i.e., 15 minute hold time, are not included in this discussion.

Carrier: COURIERComments/ResolutionSample Turn Around Time (TAT)

6. Did the COC indicate standard TAT, or Expedited TAT? Yes

Sample Cooler

7. Was a sample cooler received? Yes
8. If yes, was cooler received in good condition? Yes
9. Was the sample(s) received intact, i.e., not broken? Yes
10. Were custody/security seals present? No
11. If yes, were custody/security seals intact? NA
12. Was the sample received on ice? Yes

Note: Thermal preservation is not required, if samples are received within 15 minutes of sampling

13. See COC for individual sample temps. Samples outside of 0°C-6°C will be recorded in comments.

Sample Container

14. Are aqueous VOC samples present? No
15. Are VOC samples collected in VOA Vials? NA
16. Is the head space less than 6-8 mm (pea sized or less)? NA
17. Was a trip blank (TB) included for VOC analyses? NA
18. Are non-VOC samples collected in the correct containers? Yes
19. Is the appropriate volume/weight or number of sample containers collected? Yes

Field Label

20. Were field sample labels filled out with the minimum information:
 - Sample ID? Yes
 - Date/Time Collected? Yes
 - Collectors name? Yes

Sample Preservation

21. Does the COC or field labels indicate the samples were preserved? No
22. Are sample(s) correctly preserved? NA
24. Is lab filtration required and/or requested for dissolved metals? No

Multiphase Sample Matrix

26. Does the sample have more than one phase, i.e., multiphase? No
27. If yes, does the COC specify which phase(s) is to be analyzed? NA

Subcontract Laboratory

28. Are samples required to get sent to a subcontract laboratory? No
29. Was a subcontract laboratory specified by the client and if so who? NA Subcontract Lab: NA

Client Instruction

Signature of client authorizing changes to the COC or sample disposition.

Date



envirotech Inc.

**Devon Energy Production Company, LP
Thistle Unit 22 CTB 2
Closure Report**



Appendix D. Liner Inspection Documentation

11/14/25, 3:01 PM

OCD Permitting

SIGN-IN HELP

Searches Operator Data Hearing Fee Application

OCD Permitting

Home Operator Data Action Status Action Search Results Action Status Item Details

[NOTIFY] Notification Of Liner Inspection (C-141L) Application

Submission Information

Submission ID:	508798	Districts:	Hobbs
Operator:	[6137] DEVON ENERGY PRODUCTION COMPANY, LP	Counties:	Lea
Description:	DEVON ENERGY PRODUCTION COMPANY, LP [6137] THISTLE UNIT 22 CTB 2 nAPP2515351849		
Status:	Approved		
Status Date:	09/24/2025		
References (0):			

Forms

This application type does not have attachments.

Questions

Prerequisites

Incident ID (n#)	nAPP2515351849
Incident Name	NAPP2515351849 THISTLE UNIT 22 CTB 2 @ 0
Incident Type	Produced Water Release
Incident Status	Initial C-141 Approved
Incident Facility	[fAPP2123650159] THISTLE UNIT 22 CTB 2

Location of Release Source

Site Name	THISTLE UNIT 22 CTB 2
Date Release Discovered	06/01/2025
Surface Owner	State

Liner Inspection Event Information

Please answer all the questions in this group.

What is the liner inspection surface area in square feet	8,315
Have all the impacted materials been removed from the liner	Yes
Liner inspection date pursuant to Subparagraph (a) of Paragraph (5) of Subsection A of 19.15.29.11 NMAC	09/26/2025
Time liner inspection will commence	09:00 AM
Warning: Notification can not be less than two business days prior to conducting liner inspection.	
Please provide any information necessary for observers to liner inspection	Leslie Mendenhall (575)973-5675
Please provide any information necessary for navigation to liner inspection site	32.29642, -103.55657

Acknowledgments

This submission type does not have acknowledgments, at this time.

11/14/25, 3:01 PM

OCD Permitting

SIGN-IN HELP

Searches Operator Data Hearing Fee Application

Conditions

Summary: jakey (8/24/2025): Failure to notify the OCD of liner inspections including any changes in date/time per the requirements of 19.15.29.11.A(5)(a)(ii) NMAC, may result in the inspection not being accepted.

Reasons

No reasons found for this submission.

and 8/1/2025

New Mexico Energy, Minerals and Natural Resources Department | Copyright 2010
1220 South St. Francis Drive | Santa Fe, NM 87505 | P: 505-475-3200 | F: 505-475-4020

EMNRD Home OCD Menu Page CDD Rules Search

Liner Integrity Inspection Report

Name of Site: Thistle Unit 22 CTB2 Project #: DEV-25-
 Inspection Tech: Leslie Mendenhall Date of Inspection: 9/26/05 Time: 9:01

Visual Inspection

Type of Secondary Containment:

- Earthen ☐
- Clay ☐
- Supported, Coated Fabrics and Laminates ☒
- Unsupported Geomembranes ☐
- Steel ☒
- Cement ☐
- Steel Walls/fabric liner

Status:

- Free Fluid in Secondary Containment ☐
- Intermittent Pooling ☐
- Sump has Fluid ☐
- Dry ☒
- Release or leak traces inside containment ☐
- Release or leak traces outside containment ☒

Observations

Environmental Damage:

- Damage from animals or vegetation compromising liner integrity ☐
- Discoloration, erosion, or chemical degradation of the liner ☒
- Degradation of the liner system from storm water flow or erosion of the secondary containment system ☐

Comments:

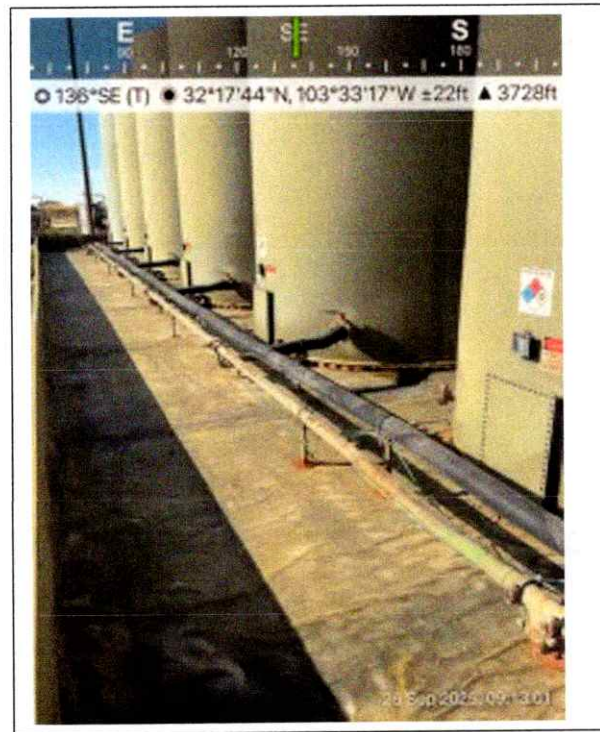
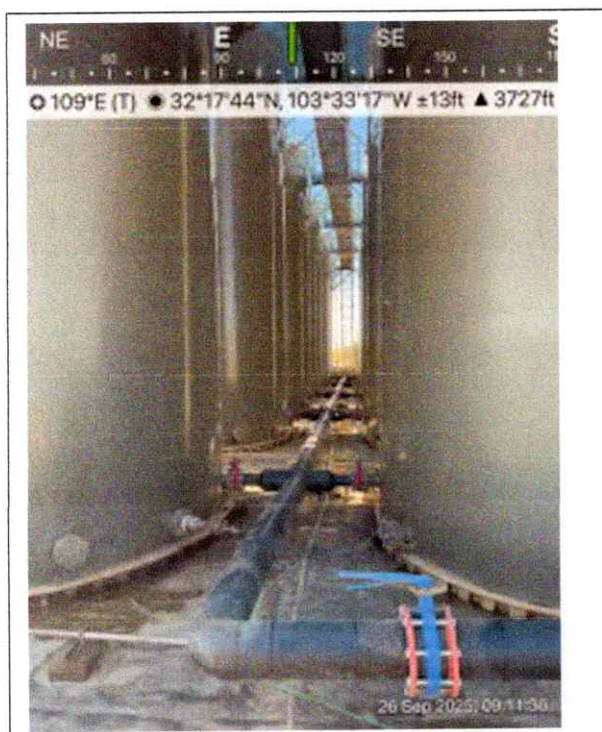
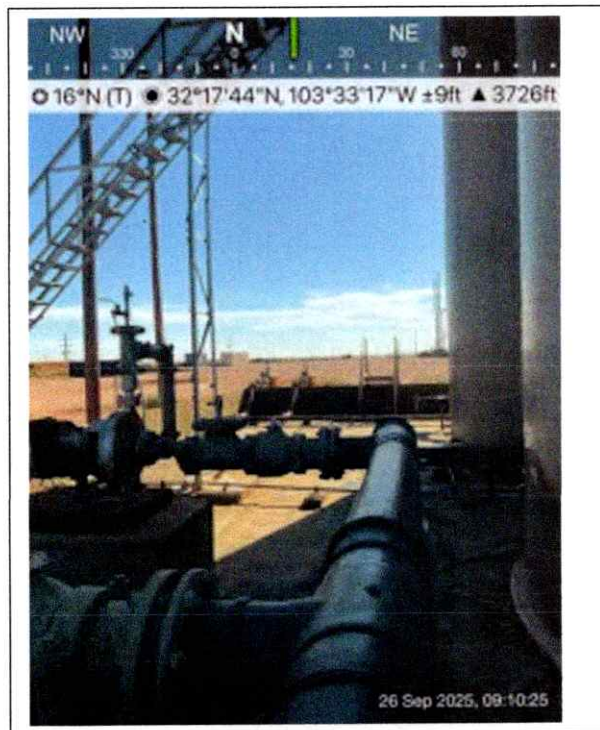
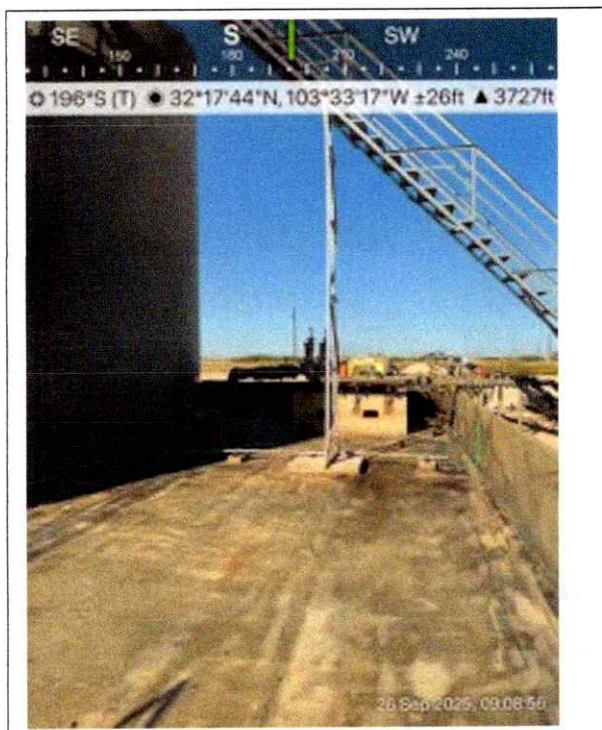
No liner integrity issue noted from vegetation
Some staining was visually inspected on liner.
No degradation of liner.

Physical Damage:

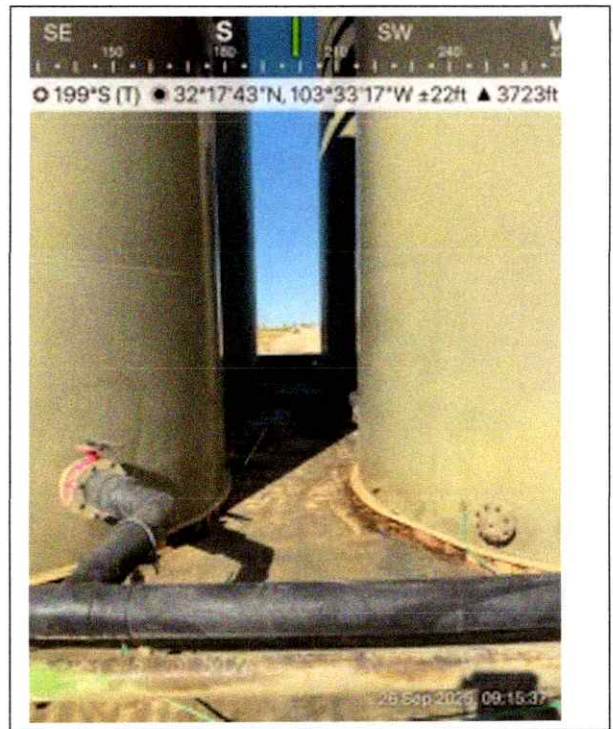
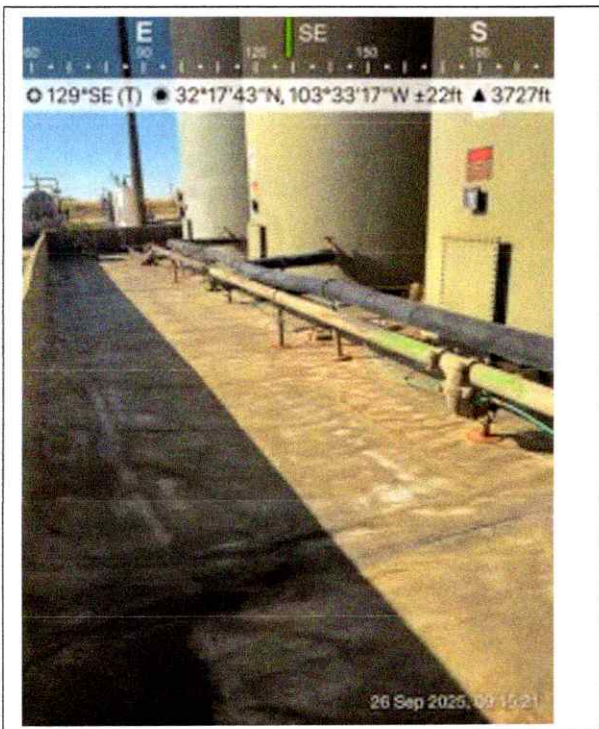
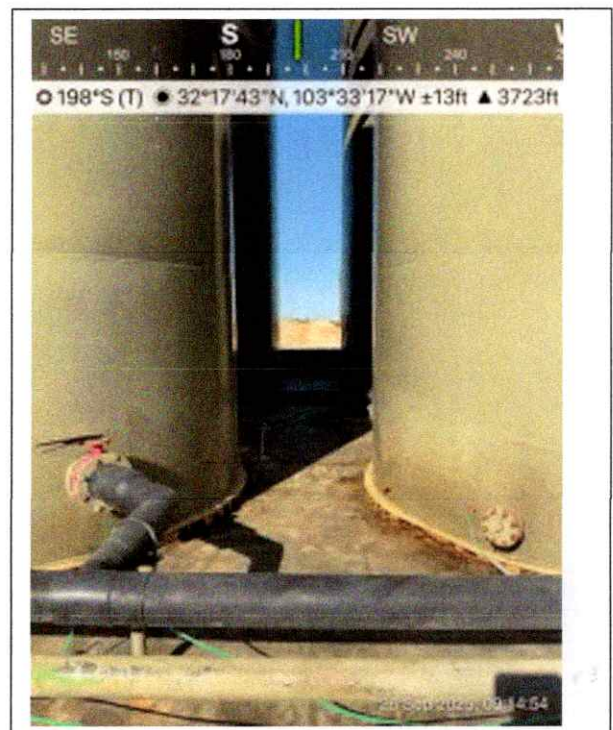
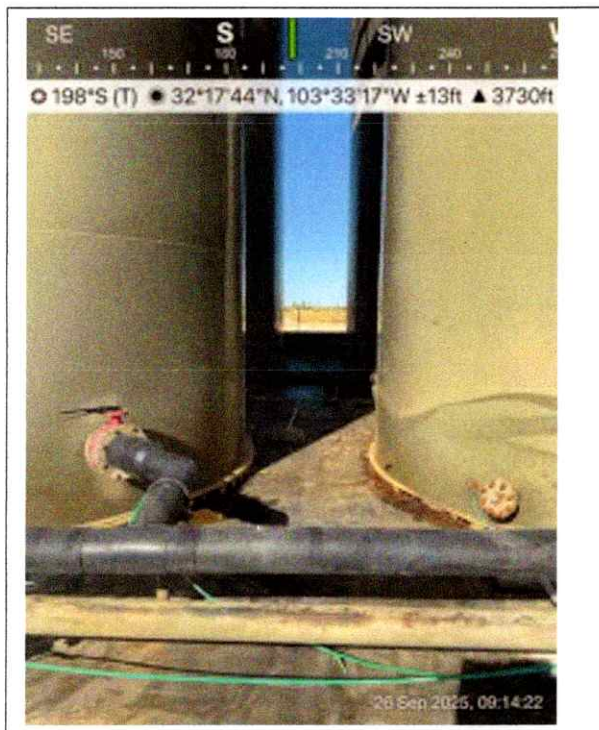
- Cracks, bulges, stains, chips, seepages in the liner system
- Improper or deferred maintenance of the liner system
- Dike wall, foundation, or embankment movement, settlement, or deterioration compromising the integrity of the liner system
- Degradation of the liner system at penetrations (piping, supports, wells, foundations, pads, etc.)
- Damage to the liner system from equipment, vehicles, foot traffic, frost heave, etc.

Comments:

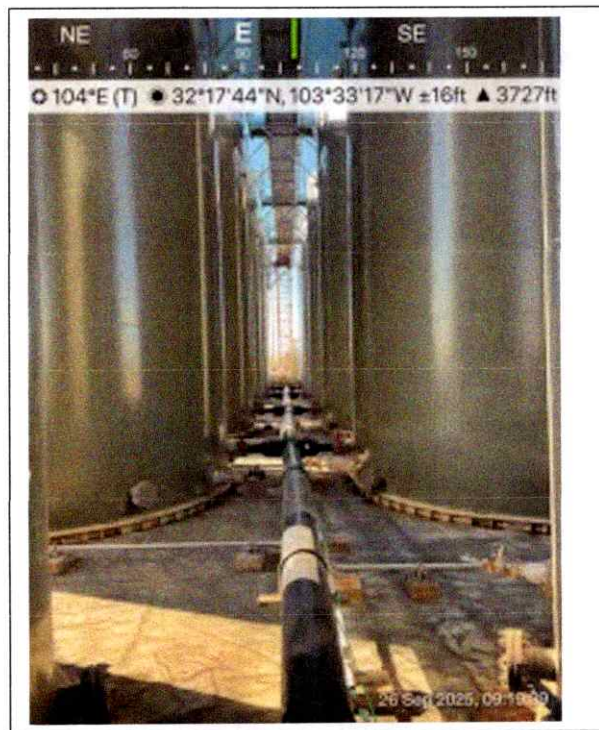
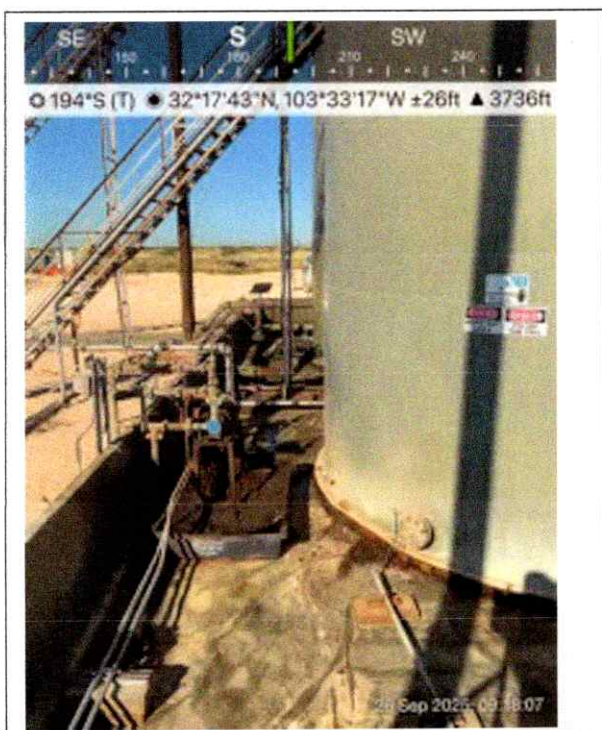
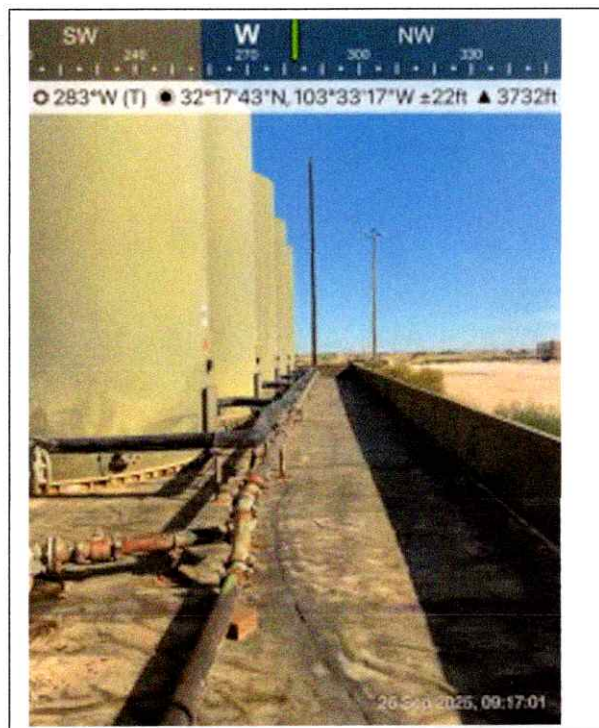
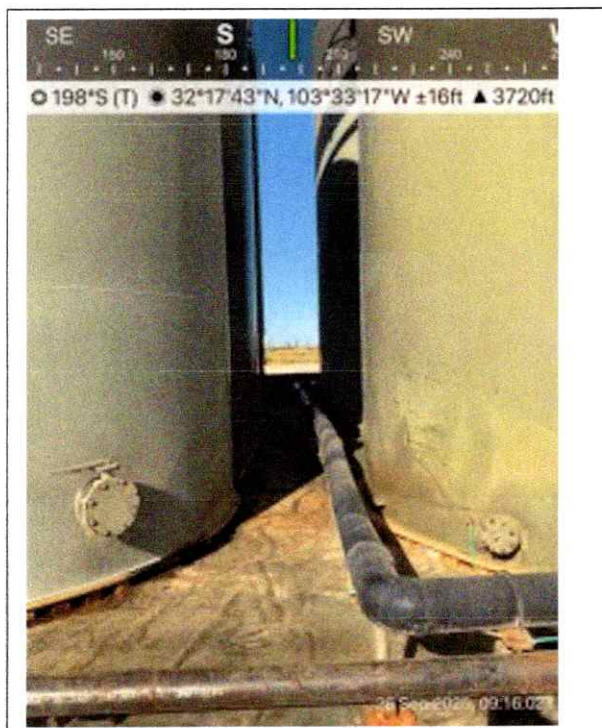
- ☒ no cracks, bulges, chips, seepage noted. ~~Some~~ Some staining was visually noted
- ☐ none noted
- ☐ none noted
- ☐ none noted
- ☐ none noted

Devon Energy – Thistle Unit 22 CTB 2**Liner Inspection – September 26, 2025**

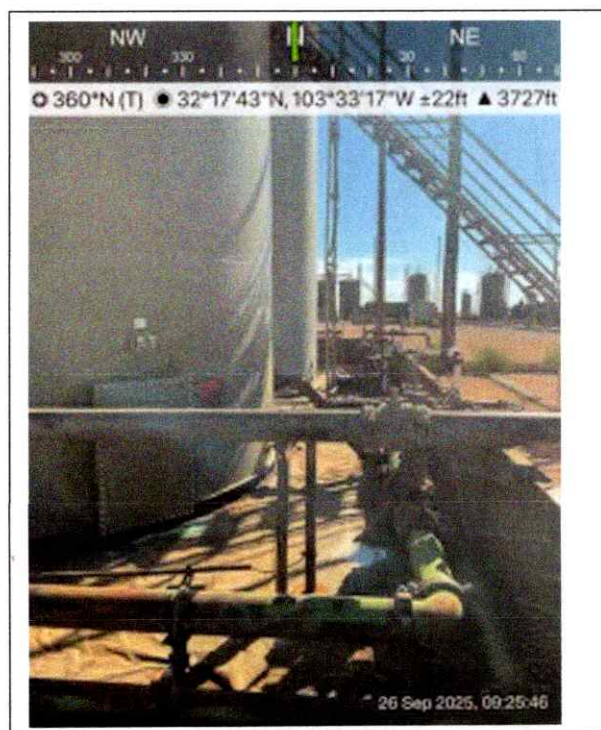
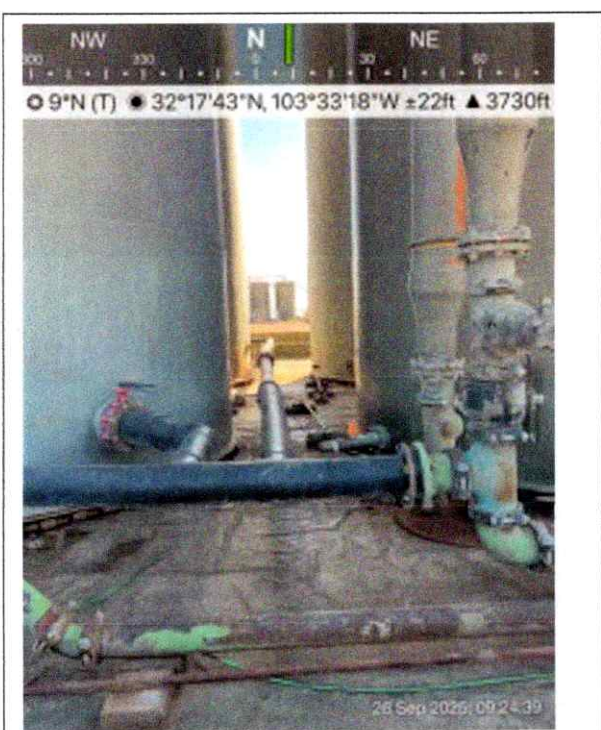
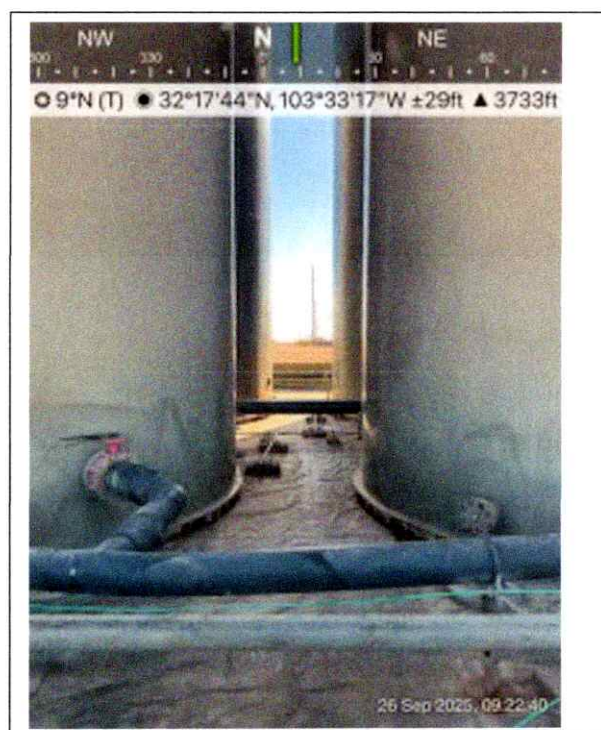
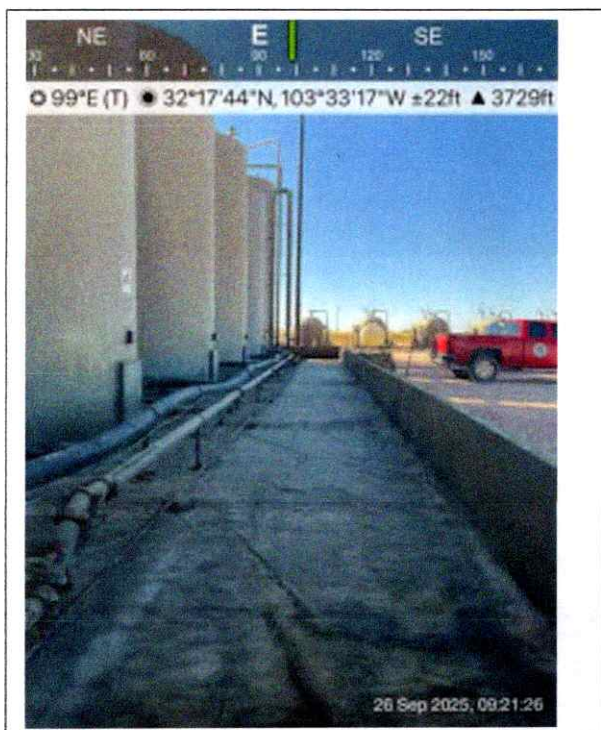
Liner Inspection – September 26, 2025



Devon Energy – Thistle Unit 22 CTB 2
Liner Inspection – September 26, 2025



Devon Energy – Thistle Unit 22 CTB 2
Liner Inspection – September 26, 2025



**Devon Energy Production Company, LP
Thistle Unit 22 CTB 2
Closure Report**



Appendix E. C-141 Forms and Correspondence

OCD Permitting

Home Operator Data Action Status Action Search Results Action Status Item Details

[C-141] Initial C-141 (C-141-V-INITIAL) Application

Submission Information

Submission ID:	471903	Districts:	Hobbs
Operator:	(6137) DEVON ENERGY PRODUCTION COMPANY, LP	Counties:	Lea
Description:	DEVON ENERGY PRODUCTION COMPANY, LP (6137) THISTLE UNIT 22 CTB 2 nAPP2515351849		
Status:	APPROVED		
Status Date:	06/09/2025		
References (0):			

Forms

Attachments: [Volume Calculation](#)

Questions

Prerequisites

Incident ID (n#)	nAPP2515351849
Incident Name	NAPP2515351849 THISTLE UNIT 22 CTB 2 @ 0
Incident Type	Produced Water Release
Incident Status	Initial C-141 Received
Incident Facility	(APP2123650155) THISTLE UNIT 22 CTB 2

Location of Release Source

Please answer all the questions in this group:

Site Name	THISTLE UNIT 22 CTB 2
Date Release Discovered	06/01/2025
Surface Owner	State

Incident Details

Please answer all the questions in this group:

Incident Type	Produced Water Release
Did this release result in a fire or is the result of a fire	No
Did this release result in any injuries	No
Has this release reached or does it have a reasonable probability of reaching a watercourse	No
Has this release endangered or does it have a reasonable probability of endangering public health	No
Has this release substantially damaged or will it substantially damage property or the environment	No
Is this release of a volume that is or may with reasonable probability be detrimental to fresh water	No

Nature and Volume of Release

Material(s) released, please answer all that apply below. Any calculations or specific justifications for the volumes provided should be attached to the follow-up C-141 submission.

Crude Oil Released (bbls) Details	Not answered.
Produced Water Released (bbls) Details	Cause: Equipment Failure Pump Produced Water Released: 12 BBL Recovered: 9 BBL Lost: 3 BBL.
Is the concentration of chloride in the produced water >10,000 mg/l	Yes
Condensate Released (bbls) Details	Not answered.
Natural Gas Vented (Mcf) Details	Not answered.
Natural Gas Flared (Mcf) Details	Not answered.
Other Released Details	Not answered.
Are there additional details for the questions above (i.e., any answer containing Other, Specify, Unknown, and/or Fire, or any negative lost amounts)	Fitting failed on water transfer pump. Majority of fluids confined to secondary containment, overspray allowed approximately 3 bbls to impact pad surface.

Nature and Volume of Release (continued)

Is this a gas only submission (i.e., only significant Mcf values reported)	No, according to supplied volumes this does not appear to be a "gas only" report.
Was this a major release as defined by Subsection A of 19.15.29.7 NMAC	No

The responsible party must undertake the following actions immediately unless they could create a safety hazard that would result in injury.

The source of the release has been stopped	True
The impacted area has been secured to protect human health and the environment	True
Released materials have been contained via the use of berms or dikes, absorbent pads, or other containment devices	True
All free liquids and recoverable materials have been removed and managed appropriately	True
If all the actions described above have not been undertaken, explain why.	Not answered.

Per Paragraph (4) of Subsection B of 19.15.29.8 NMAC the responsible party may commence remediation immediately after discovery of a release. If remediation has begun, please prepare and attach a narrative of actions to date in the follow-up C-141 submission. If remedial efforts have been successfully completed or if the release occurred within a lined containment area (see Subparagraph (a) of Paragraph (5) of Subsection A of 19.15.29.11 NMAC), please prepare and attach all information needed for closure evaluation in the follow-up C-141 submission.

I hereby certify that the information given above is true and complete to the best of my knowledge and understand that pursuant to OCD rules and regulations all operators are required to report and/or file certain release notifications and perform corrective actions for releases which may endanger public health or the environment. The acceptance of a C-141 report by the OCD does not relieve the operator of liability should their operations have failed to adequately investigate and remediate contamination that pose a threat to groundwater, surface water, human health or the environment. In addition, OCD acceptance of a C-141 report does not relieve the operator of responsibility for compliance with any other federal, state, or local laws and/or regulations.

I hereby agree and sign off to the above statement.

Name: James Raley
Title: EHS Professional
Email: jrm.raley@dm.com
Date: 06/09/2025

Site Characterization

Please answer all the questions in this group (only required when seeking remediation plan approval and beyond). This information must be provided to the appropriate district office no later than 90 days after the release discovery date.

What is the shallowest depth to groundwater beneath the area affected by the release in feet below ground surface (ft bgs)?	Not answered.
What method was used to determine the depth to ground water?	Not answered.
Did this release impact groundwater or surface water?	Not answered.

What is the minimum distance, between the closest lateral extents of the release and the following surface areas:

A continuously flowing watercourse or any other significant watercourse	Not answered.
Any lakebed, sinkhole, or playa lake (measured from the ordinary high-water mark).	Not answered.
An occupied permanent residence, school, hospital, institution, or church	Not answered.
A spring or a private domestic fresh water well used by less than five households for domestic or stock watering purposes	Not answered.
Any other fresh water well or spring	Not answered.
Incorporated municipal boundaries or a defined municipal fresh water well field	Not answered.
A wetland	Not answered.
A subsurface mine	Not answered.
An (non-karst) unstable area	Not answered.
Categorize the risk of this well / site being in a karst geology	Not answered.
A 100-year floodplain	Not answered.
Did the release impact areas not on an exploration, development, production, or storage site?	Not answered.

Remediation Plan

Please answer all the questions that apply or are indicated. This information must be provided to the appropriate district office no later than 90 days after the release discovery date.

Requesting a remediation plan approval with this submission: No

The OCD recognizes that proposed remediation measures may have to be minimally adjusted in accordance with the physical realities encountered during remediation. If the responsible party has any need to significantly deviate from the remediation plan proposed, then it should consult with the division to determine if another remediation plan submission is required.

Acknowledgments

This submission type does not have acknowledgments, at this time.

Comments

No comments found for this submission.

Conditions

Summary: scott rodgers (6/9/2025). None

Reasons

No reasons found for this submission.

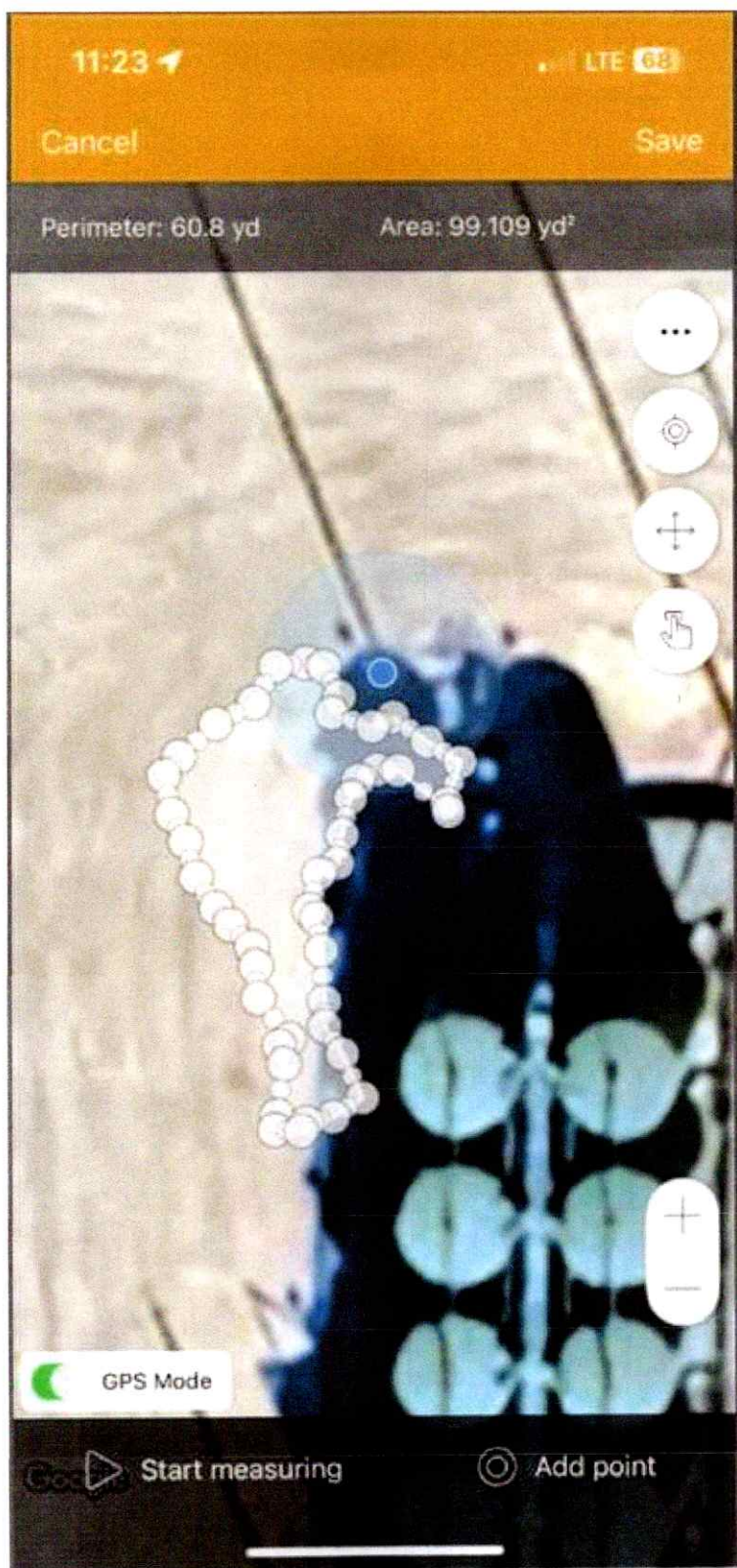
Go Back

Thistle Unit 22 CTB 2



Copy and Paste this section into TEAMS and/or Sheild Report		
Person Reporting:	ALLMAN, JAY	
Foreman Name:	LEWIS, MERLE	
Facility Name:	THISTLE UNIT 22 CTB 2	
API (If applicable):	30-025-44418	
GPS:	Lat. N 32.29642 / Long. W -103.55657	
Section-Township-Range	SEC. 27-T23S-R33E	
Time of Incident:	6/1/2025	
Time Incident Found:	6/1/2025 @ ~10:00am	
TAKE PICTURE OF LEASE SIGN AND ADD ALL INFORMATION TO TEAMS		
Description of Event: (What & How)	Notified from SWD team about an active leak. The leak was caused by overspray due to a threaded 3"x1" swedge to flange connection on the discharge side of WTP 507.	
Immediate Actions:	WTP taken OOS and leak isolated. LO notified PA and collected proper documentation.	
M1 & M3 #s:	M1 #13040595/M3 #13040571	
All fluids stayed on pad?	<input type="checkbox"/> YES	
Type	Released	Recovered
	Measurement in Barrels	
Oil		
Produced Water		
Mix	11.547	~9.0
Gas		
Other		

Spills In Lined Containment	
Measurements Of Standing Fluid	
Length(Ft)	43
Width(Ft)	60
Depth(in.)	0.25
Total Capacity without tank displacements (bbls)	9.57
No. of 500 bbl Tanks In Standing Fluid	1
No. of Other Tanks In Standing Fluid	0
OD Of Other Tanks In Standing Fluid(feet)	
Total Volume of standing fluid accounting for tank displacement.	8.87



Sante Fe Main Office
Phone: (505) 476-3441

General Information
Phone: (505) 629-6116

Online Phone Directory
<https://www.emnrd.nm.gov/ocd/contact-us>

State of New Mexico
Energy, Minerals and Natural Resources
Oil Conservation Division
1220 S. St Francis Dr.
Santa Fe, NM 87505

QUESTIONS

Action 526974

QUESTIONS

Operator: DEVON ENERGY PRODUCTION COMPANY, LP 333 West Sheridan Ave. Oklahoma City, OK 73102	OGRID: 6137
	Action Number: 526974
	Action Type: [C-141] Remediation Closure Request C-141 (C-141-v-Closure)

QUESTIONS

Prerequisites	
Incident ID (n#)	nAPP2515351849
Incident Name	NAPP2515351849 THISTLE UNIT 22 CTB 2 @ FAPP2123650155
Incident Type	Produced Water Release
Incident Status	Remediation Closure Report Received
Incident Facility	[fAPP2123650155] THISTLE UNIT 22 CTB 2

Location of Release Source*Please answer all the questions in this group.*

Site Name	THISTLE UNIT 22 CTB 2
Date Release Discovered	06/01/2025
Surface Owner	State

Incident Details*Please answer all the questions in this group.*

Incident Type	Produced Water Release
Did this release result in a fire or is the result of a fire	No
Did this release result in any injuries	No
Has this release reached or does it have a reasonable probability of reaching a watercourse	No
Has this release endangered or does it have a reasonable probability of endangering public health	No
Has this release substantially damaged or will it substantially damage property or the environment	No
Is this release of a volume that is or may with reasonable probability be detrimental to fresh water	No

Nature and Volume of Release*Material(s) released, please answer all that apply below. Any calculations or specific justifications for the volumes provided should be attached to the follow-up C-141 submission.*

Crude Oil Released (bbls) Details	Not answered.
Produced Water Released (bbls) Details	Cause: Equipment Failure Pump Produced Water Released: 12 BBL Recovered: 9 BBL Lost: 3 BBL.
Is the concentration of chloride in the produced water >10,000 mg/l	Yes
Condensate Released (bbls) Details	Not answered.
Natural Gas Vented (Mcf) Details	Not answered.
Natural Gas Flared (Mcf) Details	Not answered.
Other Released Details	Not answered.
Are there additional details for the questions above (i.e. any answer containing Other, Specify, Unknown, and/or Fire, or any negative lost amounts)	Fitting failed on water transfer pump. Majority of fluids confined to secondary containment, overspray allowed approximately 3 bbls to impact pad surface.

Sante Fe Main Office
Phone: (505) 476-3441

General Information
Phone: (505) 629-6116

Online Phone Directory
<https://www.emnrd.nm.gov/ocd/contact-us>

State of New Mexico
Energy, Minerals and Natural Resources
Oil Conservation Division
1220 S. St Francis Dr.
Santa Fe, NM 87505

QUESTIONS, Page 2

Action 526974

QUESTIONS (continued)

Operator: DEVON ENERGY PRODUCTION COMPANY, LP 333 West Sheridan Ave. Oklahoma City, OK 73102	OGRID: 6137
	Action Number: 526974
	Action Type: [C-141] Remediation Closure Request C-141 (C-141-v-Closure)

QUESTIONS

Nature and Volume of Release (continued)	
Is this a gas only submission (i.e. only significant Mcf values reported)	No, according to supplied volumes this does not appear to be a "gas only" report.
Was this a major release as defined by Subsection A of 19.15.29.7 NMAC	No
Reasons why this would be considered a submission for a notification of a major release	Unavailable.

With the implementation of the 19.15.27 NMAC (05/25/2021), venting and/or flaring of natural gas (i.e. gas only) are to be submitted on the C-129 form.

Initial Response

The responsible party must undertake the following actions immediately unless they could create a safety hazard that would result in injury.

The source of the release has been stopped	True
The impacted area has been secured to protect human health and the environment	True
Released materials have been contained via the use of berms or dikes, absorbent pads, or other containment devices	True
All free liquids and recoverable materials have been removed and managed appropriately	True
If all the actions described above have not been undertaken, explain why	Not answered.

Per Paragraph (4) of Subsection B of 19.15.29.8 NMAC the responsible party may commence remediation immediately after discovery of a release. If remediation has begun, please prepare and attach a narrative of actions to date in the follow-up C-141 submission. If remedial efforts have been successfully completed or if the release occurred within a lined containment area (see Subparagraph (a) of Paragraph (5) of Subsection A of 19.15.29.11 NMAC), please prepare and attach all information needed for closure evaluation in the follow-up C-141 submission.

I hereby certify that the information given above is true and complete to the best of my knowledge and understand that pursuant to OCD rules and regulations all operators are required to report and/or file certain release notifications and perform corrective actions for releases which may endanger public health or the environment. The acceptance of a C-141 report by the OCD does not relieve the operator of liability should their operations have failed to adequately investigate and remediate contamination that pose a threat to groundwater, surface water, human health or the environment. In addition, OCD acceptance of a C-141 report does not relieve the operator of responsibility for compliance with any other federal, state, or local laws and/or regulations.

I hereby agree and sign off to the above statement	Name: James Raley Title: EHS Professional Email: jim.raley@dvni.com Date: 11/17/2025
--	---

Sante Fe Main Office
Phone: (505) 476-3441

General Information
Phone: (505) 629-6116

Online Phone Directory
<https://www.emnrd.nm.gov/ocd/contact-us>

State of New Mexico
Energy, Minerals and Natural Resources
Oil Conservation Division
1220 S. St Francis Dr.
Santa Fe, NM 87505

QUESTIONS, Page 3

Action 526974

QUESTIONS (continued)

Operator: DEVON ENERGY PRODUCTION COMPANY, LP 333 West Sheridan Ave. Oklahoma City, OK 73102	OGRID: 6137
	Action Number: 526974
	Action Type: [C-141] Remediation Closure Request C-141 (C-141-v-Closure)

QUESTIONS**Site Characterization**

Please answer all the questions in this group (only required when seeking remediation plan approval and beyond). This information must be provided to the appropriate district office no later than 90 days after the release discovery date.

What is the shallowest depth to groundwater beneath the area affected by the release in feet below ground surface (ft bgs)	Between 51 and 75 (ft.)
What method was used to determine the depth to ground water	NM OSE iWaters Database Search
Did this release impact groundwater or surface water	No
What is the minimum distance, between the closest lateral extents of the release and the following surface areas:	
A continuously flowing watercourse or any other significant watercourse	Greater than 5 (mi.)
Any lakebed, sinkhole, or playa lake (measured from the ordinary high-water mark)	Between 1 and 5 (mi.)
An occupied permanent residence, school, hospital, institution, or church	Between 1 and 5 (mi.)
A spring or a private domestic fresh water well used by less than five households for domestic or stock watering purposes	Between ½ and 1 (mi.)
Any other fresh water well or spring	Between 1 and 5 (mi.)
Incorporated municipal boundaries or a defined municipal fresh water well field	Greater than 5 (mi.)
A wetland	Between ½ and 1 (mi.)
A subsurface mine	Greater than 5 (mi.)
An (non-karst) unstable area	Greater than 5 (mi.)
Categorize the risk of this well / site being in a karst geology	Low
A 100-year floodplain	Between 1 and 5 (mi.)
Did the release impact areas not on an exploration, development, production, or storage site	No

Remediation Plan

Please answer all the questions that apply or are indicated. This information must be provided to the appropriate district office no later than 90 days after the release discovery date.

Requesting a remediation plan approval with this submission	Yes
<i>Attach a comprehensive report demonstrating the lateral and vertical extents of soil contamination associated with the release have been determined, pursuant to 19.15.29.11 NMAC and 19.15.29.13 NMAC.</i>	
Have the lateral and vertical extents of contamination been fully delineated	Yes
Was this release entirely contained within a lined containment area	No

Soil Contamination Sampling: (Provide the highest observable value for each, in milligrams per kilograms.)

Chloride (EPA 300.0 or SM4500 Cl B)	9132
TPH (GRO+DRO+MRO) (EPA SW-846 Method 8015M)	0
GRO+DRO (EPA SW-846 Method 8015M)	0
BTEX (EPA SW-846 Method 8021B or 8260B)	0
Benzene (EPA SW-846 Method 8021B or 8260B)	0

Per Subsection B of 19.15.29.11 NMAC unless the site characterization report includes completed efforts at remediation, the report must include a proposed remediation plan in accordance with 19.15.29.12 NMAC, which includes the anticipated timelines for beginning and completing the remediation.

On what estimated date will the remediation commence	07/24/2025
On what date will (or did) the final sampling or liner inspection occur	09/26/2025
On what date will (or was) the remediation complete(d)	09/26/2025
What is the estimated surface area (in square feet) that will be reclaimed	2475
What is the estimated volume (in cubic yards) that will be reclaimed	92
What is the estimated surface area (in square feet) that will be remediated	2475
What is the estimated volume (in cubic yards) that will be remediated	92

These estimated dates and measurements are recognized to be the best guess or calculation at the time of submission and may (be) change(d) over time as more remediation efforts are completed.

The OCD recognizes that proposed remediation measures may have to be minimally adjusted in accordance with the physical realities encountered during remediation. If the responsible party has any need to significantly deviate from the remediation plan proposed, then it should consult with the division to determine if another remediation plan submission is required.

Sante Fe Main Office
Phone: (505) 476-3441

General Information
Phone: (505) 629-6116

Online Phone Directory
<https://www.emnrd.nm.gov/ocd/contact-us>

State of New Mexico
Energy, Minerals and Natural Resources
Oil Conservation Division
1220 S. St Francis Dr.
Santa Fe, NM 87505

QUESTIONS, Page 4

Action 526974

QUESTIONS (continued)

Operator: DEVON ENERGY PRODUCTION COMPANY, LP 333 West Sheridan Ave. Oklahoma City, OK 73102	OGRID: 6137
	Action Number: 526974
	Action Type: [C-141] Remediation Closure Request C-141 (C-141-v-Closure)

QUESTIONS

Remediation Plan (continued)	
<i>Please answer all the questions that apply or are indicated. This information must be provided to the appropriate district office no later than 90 days after the release discovery date.</i>	
This remediation will (or is expected to) utilize the following processes to remediate / reduce contaminants:	
<i>(Select all answers below that apply.)</i>	
(Ex Situ) Excavation and off-site disposal (i.e. dig and haul, hydrovac, etc.)	Yes
Which OCD approved facility will be used for off-site disposal	fEEM0112334510 HALFWAY DISPOSAL AND LANDFILL
OR which OCD approved well (API) will be used for off-site disposal	Not answered.
OR is the off-site disposal site, to be used, out-of-state	Not answered.
OR is the off-site disposal site, to be used, an NMED facility	Not answered.
(Ex Situ) Excavation and on-site remediation (i.e. On-Site Land Farms)	Not answered.
(In Situ) Soil Vapor Extraction	Not answered.
(In Situ) Chemical processing (i.e. Soil Shredding, Potassium Permanganate, etc.)	Not answered.
(In Situ) Biological processing (i.e. Microbes / Fertilizer, etc.)	Not answered.
(In Situ) Physical processing (i.e. Soil Washing, Gypsum, Disking, etc.)	Not answered.
Ground Water Abatement pursuant to 19.15.30 NMAC	Not answered.
OTHER (Non-listed remedial process)	Not answered.
<i>Per Subsection B of 19.15.29.11 NMAC unless the site characterization report includes completed efforts at remediation, the report must include a proposed remediation plan in accordance with 19.15.29.12 NMAC, which includes the anticipated timelines for beginning and completing the remediation.</i>	
I hereby certify that the information given above is true and complete to the best of my knowledge and understand that pursuant to OCD rules and regulations all operators are required to report and/or file certain release notifications and perform corrective actions for releases which may endanger public health or the environment. The acceptance of a C-141 report by the OCD does not relieve the operator of liability should their operations have failed to adequately investigate and remediate contamination that pose a threat to groundwater, surface water, human health or the environment. In addition, OCD acceptance of a C-141 report does not relieve the operator of responsibility for compliance with any other federal, state, or local laws and/or regulations.	
I hereby agree and sign off to the above statement	Name: James Raley Title: EHS Professional Email: jim.raley@dv.com Date: 11/17/2025
<i>The OCD recognizes that proposed remediation measures may have to be minimally adjusted in accordance with the physical realities encountered during remediation. If the responsible party has any need to significantly deviate from the remediation plan proposed, then it should consult with the division to determine if another remediation plan submission is required.</i>	

Sante Fe Main Office
Phone: (505) 476-3441

General Information
Phone: (505) 629-6116

Online Phone Directory
<https://www.emnrd.nm.gov/ocd/contact-us>

State of New Mexico
Energy, Minerals and Natural Resources
Oil Conservation Division
1220 S. St Francis Dr.
Santa Fe, NM 87505

QUESTIONS, Page 5

Action 526974

QUESTIONS (continued)

Operator: DEVON ENERGY PRODUCTION COMPANY, LP 333 West Sheridan Ave. Oklahoma City, OK 73102	OGRID: 6137
	Action Number: 526974
	Action Type: [C-141] Remediation Closure Request C-141 (C-141-v-Closure)

QUESTIONS

Deferral Requests Only	
Only answer the questions in this group if seeking a deferral upon approval this submission. Each of the following items must be confirmed as part of any request for deferral of remediation.	
Requesting a deferral of the remediation closure due date with the approval of this submission	No

Sante Fe Main Office
Phone: (505) 476-3441

General Information
Phone: (505) 629-6116

Online Phone Directory
<https://www.emnrd.nm.gov/ocd/contact-us>

State of New Mexico
Energy, Minerals and Natural Resources
Oil Conservation Division
1220 S. St Francis Dr.
Santa Fe, NM 87505

QUESTIONS, Page 6

Action 526974

QUESTIONS (continued)

Operator: DEVON ENERGY PRODUCTION COMPANY, LP 333 West Sheridan Ave. Oklahoma City, OK 73102	OGRID: 6137
	Action Number: 526974
	Action Type: [C-141] Remediation Closure Request C-141 (C-141-v-Closure)

QUESTIONS

Sampling Event Information	
Last sampling notification (C-141N) recorded	488592
Sampling date pursuant to Subparagraph (a) of Paragraph (1) of Subsection D of 19.15.29.12 NMAC	07/30/2025
What was the (estimated) number of samples that were to be gathered	20
What was the sampling surface area in square feet	2475

Remediation Closure Request	
<i>Only answer the questions in this group if seeking remediation closure for this release because all remediation steps have been completed.</i>	
Requesting a remediation closure approval with this submission	Yes
Have the lateral and vertical extents of contamination been fully delineated	Yes
Was this release entirely contained within a lined containment area	No
All areas reasonably needed for production or subsequent drilling operations have been stabilized, returned to the sites existing grade, and have a soil cover that prevents ponding of water, minimizing dust and erosion	Yes
What was the total surface area (in square feet) remediated	2475
What was the total volume (cubic yards) remediated	92
All areas not reasonably needed for production or subsequent drilling operations have been reclaimed to contain a minimum of four feet of non-waste contain earthen material with concentrations less than 600 mg/kg chlorides, 100 mg/kg TPH, 50 mg/kg BTEX, and 10 mg/kg Benzene	Yes
What was the total surface area (in square feet) reclaimed	0
What was the total volume (in cubic yards) reclaimed	0
Summarize any additional remediation activities not included by answers (above)	Remediation Complete
<i>The responsible party must attach information demonstrating they have complied with all applicable closure requirements and any conditions or directives of the OCD. This demonstration should be in the form of a comprehensive report (in .pdf format) including a scaled site map, sampling diagrams, relevant field notes, photographs of any excavation prior to backfilling, laboratory data including chain of custody documents of final sampling, and a narrative of the remedial activities. Refer to 19.15.29.12 NMAC.</i>	
I hereby certify that the information given above is true and complete to the best of my knowledge and understand that pursuant to OCD rules and regulations all operators are required to report and/or file certain release notifications and perform corrective actions for releases which may endanger public health or the environment. The acceptance of a C-141 report by the OCD does not relieve the operator of liability should their operations have failed to adequately investigate and remediate contamination that pose a threat to groundwater, surface water, human health or the environment. In addition, OCD acceptance of a C-141 report does not relieve the operator of responsibility for compliance with any other federal, state, or local laws and/or regulations. The responsible party acknowledges they must substantially restore, reclaim, and re-vegetate the impacted surface area to the conditions that existed prior to the release or their final land use in accordance with 19.15.29.13 NMAC including notification to the OCD when reclamation and re-vegetation are complete.	
I hereby agree and sign off to the above statement	Name: James Raley Title: EHS Professional Email: jim.raley@dvn.com Date: 11/17/2025

Sante Fe Main Office
Phone: (505) 476-3441

General Information
Phone: (505) 629-6116

Online Phone Directory
<https://www.emnrd.nm.gov/ocd/contact-us>

State of New Mexico
Energy, Minerals and Natural Resources
Oil Conservation Division
1220 S. St Francis Dr.
Santa Fe, NM 87505

QUESTIONS, Page 7

Action 526974

QUESTIONS (continued)

Operator: DEVON ENERGY PRODUCTION COMPANY, LP 333 West Sheridan Ave. Oklahoma City, OK 73102	OGRID: 6137
	Action Number: 526974
	Action Type: [C-141] Remediation Closure Request C-141 (C-141-v-Closure)

QUESTIONS

Reclamation Report	
Only answer the questions in this group if all reclamation steps have been completed.	
Requesting a reclamation approval with this submission	No

Sante Fe Main Office
Phone: (505) 476-3441

General Information
Phone: (505) 629-6116

Online Phone Directory
<https://www.emnrd.nm.gov/ocd/contact-us>

State of New Mexico
Energy, Minerals and Natural Resources
Oil Conservation Division
1220 S. St Francis Dr.
Santa Fe, NM 87505

CONDITIONS

Action 526974

CONDITIONS

Operator: DEVON ENERGY PRODUCTION COMPANY, LP 333 West Sheridan Ave. Oklahoma City, OK 73102	OGRID: 6137
	Action Number: 526974
	Action Type: [C-141] Remediation Closure Request C-141 (C-141-v-Closure)

CONDITIONS

Created By	Condition	Condition Date
scott.rodgers	This Remediation Closure Report is approved. Areas reasonably needed for production or subsequent drilling operations will need to be reclaimed and revegetated as soon as they are no longer reasonably needed. A report for reclamation and revegetation will need to be submitted and approved prior to this incident receiving the final status of "Restoration Complete".	1/26/2026