



## CLOSURE REPORT

Property:

**Lateral K-25**  
Unit Letter F, S33 T27N R7W  
Rio Arriba County, New Mexico

**New Mexico EMNRD OCD Incident ID No. NAPP2523233981**

**November 18, 2025**

Ensolum Project No. 05A1226386

Prepared for:

**Enterprise Field Services, LLC**  
614 Reilly Avenue  
Farmington, NM 87401  
Attn: Mr. Thomas Long

Prepared by:

  
Chad D'Apointi  
Project Scientist  
Kyle Summers  
Senior Managing Geologist

## TABLE OF CONTENTS

<b>1.0</b>	<b>INTRODUCTION.....</b>	<b>1</b>
1.1	Site Description & Background .....	1
1.2	Project Objective .....	1
<b>2.0</b>	<b>CLOSURE CRITERIA .....</b>	<b>1</b>
<b>3.0</b>	<b>SOIL REMEDIATION ACTIVITIES.....</b>	<b>3</b>
<b>4.0</b>	<b>SOIL SAMPLING PROGRAM.....</b>	<b>3</b>
<b>5.0</b>	<b>SOIL LABORATORY ANALYTICAL METHODS.....</b>	<b>4</b>
<b>6.0</b>	<b>SOIL DATA EVALUATION .....</b>	<b>4</b>
<b>7.0</b>	<b>RECLAMATION .....</b>	<b>5</b>
<b>8.0</b>	<b>REVEGETATION .....</b>	<b>5</b>
<b>9.0</b>	<b>FINDINGS AND RECOMMENDATION .....</b>	<b>5</b>
<b>10.0</b>	<b>STANDARDS OF CARE, LIMITATIONS, AND RELIANCE.....</b>	<b>5</b>
10.1	Standard of Care .....	5
10.2	Limitations .....	5
10.3	Reliance.....	6

## LIST OF APPENDICES

### Appendix A – Figures

Figure 1: Topographic Map  
 Figure 2: Site Vicinity Map  
 Figure 3: Site Map with Soil Analytical Results

### Appendix B – Siting Figures and Documentation

Figure A: 1.0 Mile Radius Water Well/POD Location Map  
 Figure B: Nearest Cathodic Protection Wells with Recorded Depths to Water  
 Figure C: 300 Foot Radius Watercourse and Drainage Identification  
 Figure D: 300 Foot Radius Occupied Structure Identification  
 Figure E: Water Well and Natural Spring Location  
 Figure F: Wetlands  
 Figure G: Mines, Mills, and Quarries  
 Figure H: 100-Year Flood Plain Map

### Appendix C – Executed C-138 Solid Waste Acceptance Form

### Appendix D – Photographic Documentation

### Appendix E – Regulatory Correspondence

### Appendix F – Table 1 - Soil Analytical Summary

### Appendix G – Laboratory Data Sheets & Chain of Custody Documentation

## 1.0 INTRODUCTION

### 1.1 Site Description & Background

<b>Operator:</b>	Enterprise Field Services, LLC / Enterprise Products Operating LLC (Enterprise)
<b>Site Name:</b>	Lateral K-25 (Site)
<b>NM EMNRD OCD Incident ID No.</b>	NAPP2523233981
<b>Location:</b>	36.532463° North, 107.584136° West Unit Letter F, Section 33, Township 27 North, Range 7 West Rio Arriba County, New Mexico
<b>Property:</b>	Bureau of Land Management (BLM)
<b>Regulatory:</b>	New Mexico (NM) Energy, Minerals and Natural Resources Department (EMNRD) Oil Conservation Division (OCD)

On August 11, 2025, a potential release of natural gas was identified from the Lateral K-25 pipeline. Enterprise subsequently isolated and locked the pipeline out of service. On August 18, 2025, Enterprise initiated activities to remediate potential petroleum hydrocarbon impact. On August 20, 2025, Enterprise determined the release was “reportable” due to the potential volume of impacted soil. The NM EMNRD OCD was subsequently notified.

A **Topographic Map** depicting the location of the Site is included as **Figure 1**, and a **Site Vicinity Map** is included as **Figure 2** in **Appendix A**.

### 1.2 Project Objective

The primary objective of the closure activities was to reduce constituent of concern (COC) concentrations in the on-site soils to below the applicable NM EMNRD OCD closure criteria.

## 2.0 CLOSURE CRITERIA

The Site is subject to regulatory oversight by the NM EMNRD OCD. During the evaluation and remediation of the Site, Ensolum, LLC (Ensolum) referenced New Mexico Administrative Code (NMAC) 19.15.29 *Releases*, which establishes investigation and abatement action requirements for oil and gas release sites that are subject to reporting and/or corrective action. The appropriate closure criteria for sites are determined using the siting requirements outlined in Paragraph (4) of Subsection C of 19.15.29.12 NMAC. Ensolum utilized the general site characteristics and information available from NM state agency databases and federal agency geospatial databases to determine the appropriate closure criteria for the Site. Supporting figures and documentation associated with the following Siting bullets are provided in **Appendix B**.

- The NM Office of the State Engineer (OSE) tracks the usage and assignment of water rights and water well installations and records this information in the Water Rights Reporting System (WRRS) database. Water wells and other points of diversion (PODs) are each assigned POD numbers in the database (which is searchable and includes an interactive map). One POD was identified in an adjacent Public Land Survey System (PLSS) section (**Figure A, Appendix B**). POD SJ-02402 is located over 1.5 miles southwest of the Site and is approximately 660 feet lower in elevation than the Site. The recorded depth to water (DTW) for this well is 18 feet below grade surface (bgs).

- The two closest cathodic protection wells (CPW) with recorded depths to water are associated with the Rincon 73 and Rincon 186 N P production pads. (**Figure B, Appendix B**). Documentation for the Rincon 73 CPW indicates a DTW of 80 feet bgs. The Rincon 73 production pad is located approximately 0.5 miles east of the Site at an elevation approximately 30 feet lower than the Site. Documentation for the Rincon 186 N P CPW indicates a DTW of 100 feet bgs. The Rincon 186 N P production pad is located approximately 0.7 miles southeast of the Site at an elevation approximately 120 feet higher than the Site.
- The Site is located within 300 feet of a NM EMNRD OCD-defined significant watercourse (**Figure C, Appendix B**). A “blue line” ephemeral wash is located approximately 20 feet southwest of the Site.
- The Site is not located within 200 feet of a lakebed, sinkhole, or playa lake.
- The Site is not located within 300 feet of a permanent residence, school, hospital, institution, or church (**Figure D, Appendix B**).
- No springs or private domestic freshwater wells used by less than five households for domestic or stock watering purposes were identified within 500 feet of the Site (**Figure E, Appendix B**).
- The Site is located within 1,000 feet of an apparent spring. One apparent intermittent spring is located approximately 500 feet east and topographically upgradient of the site (**Figure E, Appendix B**).
- The Site is not located within incorporated municipal boundaries or within a defined municipal fresh water well field covered under a municipal ordinance adopted pursuant to New Mexico Statutes Annotated (NMSA) 1978, Section 3-27-3.
- Based on information identified in the U.S. Fish & Wildlife Service National Wetlands Inventory Wetlands Mapper, the Site is not within 300 feet of a wetland (**Figure F, Appendix B**). A riverine feature is located approximately 20 feet southwest of the Site. This riverine feature bears the “J” designation (intermittently flooded) which is generally not considered a wetland in this region.
- Based on information identified in the NM Mining and Minerals Division’s Geographic Information System (GIS) Maps and Mine Data database, the Site is not within an area overlying a subsurface mine (**Figure G, Appendix B**).
- The Site is not located within an unstable area per Paragraph (6) of Subsection U of 19.15.2.7 NMAC.
- Based on information provided by the Federal Emergency Management Agency (FEMA) National Flood Hazard Layer (NFHL) geospatial database, the Site is not within a 100-year floodplain (**Figure H, Appendix B**).

Based on available information, the Site is within 300 feet of an NM EMNRD OCD-defined significant watercourse resulting in a Tier I ranking. The NM EMNRD OCD Tier I closure criteria include the following:

Tier I Closure Criteria for Soils Impacted by a Release		
Constituent <sup>1</sup>	Method	Limit
Chloride	EPA 300.0 or SM4500 Cl B	600 mg/kg
TPH (GRO+DRO+MRO) <sup>2</sup>	EPA SW-846 Method 8015	100 mg/kg
BTEX <sup>3</sup>	EPA SW-846 Method 8021 or 8260	50 mg/kg
Benzene	EPA SW-846 Method 8021 or 8260	10 mg/kg

<sup>1</sup> – Constituent concentrations are in milligrams per kilogram (mg/kg).

<sup>2</sup> – Total Petroleum Hydrocarbons (TPH). Gasoline Range Organics (GRO). Diesel Range Organics (DRO). Motor Oil/Lube Oil Range Organics (MRO).

<sup>3</sup> – Benzene, Toluene, Ethylbenzene, and Total Xylenes (BTEX).

### 3.0 SOIL REMEDIATION ACTIVITIES

On August 18, 2025, Enterprise initiated activities to remediate petroleum hydrocarbon impact resulting from the release. During the remediation and corrective action activities, Sunland Construction Inc. provided heavy equipment and labor support, while Ensolum provided environmental consulting support.

The excavation measured approximately 24 feet long and 18 feet wide at the maximum extents. The calculated surface footprint is approximately 432 ft<sup>2</sup>. The maximum depth of the excavation measured approximately four feet bgs. The lithology encountered during the completion of remediation activities consisted primarily of silty sandy clay and sandstone.

Approximately 96 cubic yards (yd<sup>3</sup>) of petroleum hydrocarbon-affected soils and 10 barrels (bbls) of hydro-excavation soil cuttings and water were transported to the Envirotech, Inc., (Envirotech) landfarm in San Juan County, NM for disposal/remediation. The executed C-138 solid waste acceptance form is provided in **Appendix C**. The excavation was backfilled with imported fill and then contoured to the surrounding grade.

**Figure 3** is a map that identifies approximate soil sample locations and depicts the approximate dimensions of the excavation with respect to the pipeline (**Appendix A**). Photographic documentation of the field activities is included in **Appendix D**.

### 4.0 SOIL SAMPLING PROGRAM

Ensolum field screened the soil samples from the excavation utilizing a calibrated Dexsil PetroFLAG<sup>®</sup> hydrocarbon analyzer system and a photoionization detector (PID) fitted with a 10.6 eV lamp to guide excavation extents.

Ensolum's soil sampling program included the collection of six composite soil samples (S-1 through S-6) from the excavation and one composite sample (BF-1) from the backfill for laboratory analysis. The composite soil samples were comprised of five aliquots each and represent an estimated 200 square foot (ft<sup>2</sup>) or less sample area per guidelines outlined in Section D of 19.15.29.12 NMAC. The excavator bucket and/or hand tools were utilized to obtain fresh aliquots from each area of the excavation and backfill. Regulatory correspondence is provided in **Appendix E**.

On August 25, 2025, sampling was performed at the Site. The NM EMNRD OCD was notified of the sampling event although no representative was present during sampling activities. Composite soil samples S-1 (4'), and S-2 (4'), were collected from the floor of the excavation. Composite soil

samples S-3 (0' to 4'), S-4 (0' to 4'), S-5 (0' to 4'), and S-6 (0' to 4') were collected from the walls and floor of the excavation.

All soil samples were collected and placed in laboratory-prepared glassware. The containers were labeled and sealed using the laboratory-supplied labels and custody seals and were stored on ice in a cooler. The samples were relinquished to the courier for Eurofins Environment Testing South Central, LLC (Eurofins) of Albuquerque, NM, under proper chain-of-custody procedures.

## 5.0 SOIL LABORATORY ANALYTICAL METHODS

The composite soil samples were analyzed for BTEX using Environmental Protection Agency (EPA) SW-846 Method 8021; TPH GRO/DRO/MRO using EPA SW-846 Method 8015; and chlorides using EPA Method 300.0.

The laboratory analytical results are summarized in **Table 1 (Appendix F)**. The laboratory data sheets and executed chain-of-custody forms are provided in **Appendix G**.

## 6.0 SOIL DATA EVALUATION

Ensolum compared the benzene, BTEX, TPH, and chloride laboratory analytical results or laboratory practical quantitation limits (PQLs) / reporting limits (RLs) associated with the composite soil samples (S-1 through S-6 and BF-1) to the applicable NM EMNRD OCD closure criteria. Due to the high PQLs/RLs associated with the TPH MRO results when using EPA SW-846 Method 8015, Ensolum only compared the quantified TPH results to the NM EMNRD OCD closure criteria. The laboratory analytical results are summarized in **Table 1 (Appendix F)**.

- The laboratory analytical results for the composite soil samples collected from soils remaining at the Site indicate benzene is not present at concentrations greater than the laboratory PQLs/RLs, which are less than the NM EMNRD OCD closure criteria of 10 mg/kg.
- The laboratory analytical results for the composite soil samples collected from soils remaining at the Site indicate that total BTEX is not present at concentrations greater than the laboratory PQLs/RLs, which are less than the NM EMNRD OCD closure criteria of 50 mg/kg.
- The laboratory analytical results for composite soil sample S-6 indicate a total combined TPH GRO/DRO/MRO concentration of 12 mg/kg which is less than the NM EMNRD OCD closure criteria of 100 mg/kg. The laboratory analytical results for the other composite soil samples collected from soils remaining at the Site indicate total combined TPH GRO/DRO/MRO is not present at concentrations greater than the laboratory PQLs/RLs, which are less than the NM EMNRD OCD closure criteria of 100 mg/kg.
- The laboratory analytical results for the composite soil samples collected from soils remaining at the Site indicate chloride is not present at concentrations greater than the laboratory PQLs/RLs, which is less than the NM EMNRD OCD closure criteria of 600 mg/kg.

## 7.0 RECLAMATION

The excavation was backfilled with imported fill and then contoured to the surrounding grade. The backfill and the upper four feet of the excavation have been analytically verified to be below the Tier I soil standards of 50 mg/kg BTEX, 10 mg/kg benzene, 100 mg/kg total combined TPH, and 600 mg/kg Chloride. See **Appendix D** and **Appendix F** for further documentation.

## 8.0 REVEGETATION

Revegetation will be addressed in accordance with 19.15.29.13 NMAC utilizing the recommended seed mix as described in the Vegetation Community Descriptions and Seed Mixes provided by the BLM Farmington Field Office. In this case the surrounding vegetation is predominantly of the Badland Vegetation Community with a heavy juniper presence. Enterprise will reseed the area with the appropriate seed mix during the next favorable growing season. Enterprise will provide revegetation documentation under separate cover.

## 9.0 FINDINGS AND RECOMMENDATION

- Approximately 96 yd<sup>3</sup> of petroleum hydrocarbon-affected soils and 10 bbls of hydro-excavation soil cuttings and water were transported to the Envirotech landfarm for disposal/remediation.
- Six composite samples were collected from the Site and one composite sample of the backfill was collected prior to placement in the excavation. Based on laboratory analytical results, COCs were not identified in soils remaining at the Site at concentrations exceeding the NM EMNRD OCD closure criteria.

**Based on field observations and laboratory analytical results, no additional investigation or corrective action appears warranted at this time.**

## 10.0 STANDARDS OF CARE, LIMITATIONS, AND RELIANCE

### 10.1 Standard of Care

Ensolum's services were performed in accordance with standards customarily provided by a firm rendering the same or similar services in the area during the same time period. Ensolum makes no warranties, express or implied, as to the services performed hereunder. Additionally, Ensolum does not warrant the work of third parties supplying information used in the report (e.g., laboratories, regulatory agencies, or other third parties).

### 10.2 Limitations

Findings, conclusions, and recommendations resulting from these services are based upon information derived from the on-Site activities and other services performed under this scope of work, and it should be noted that this information is subject to change over time. Certain indicators of the presence of hazardous substances, petroleum products, or other constituents may have been latent, inaccessible, unobservable, or not present during these services, and Ensolum cannot represent that the Site contains no hazardous substances, toxic materials, petroleum products, or other latent conditions beyond those identified during the investigation.



Environmental conditions at other areas or portions of the Site may vary from those encountered at actual sample locations. Ensolum's findings and recommendation are based solely upon data available to Ensolum at the time of these services.

### **10.3 Reliance**

This report has been prepared for the exclusive use of Enterprise, and any authorization for use or reliance by any other party (except a governmental entity having jurisdiction over the Site) is prohibited without the express written authorization of Enterprise and Ensolum. Any unauthorized distribution or reuse is at the client's sole risk. Notwithstanding the foregoing, reliance by authorized parties will be subject to the terms, conditions, and limitations stated in this report and Ensolum's Master Services Agreement. The limitation of liability defined in the agreement is the aggregate limit of Ensolum's liability to the client.

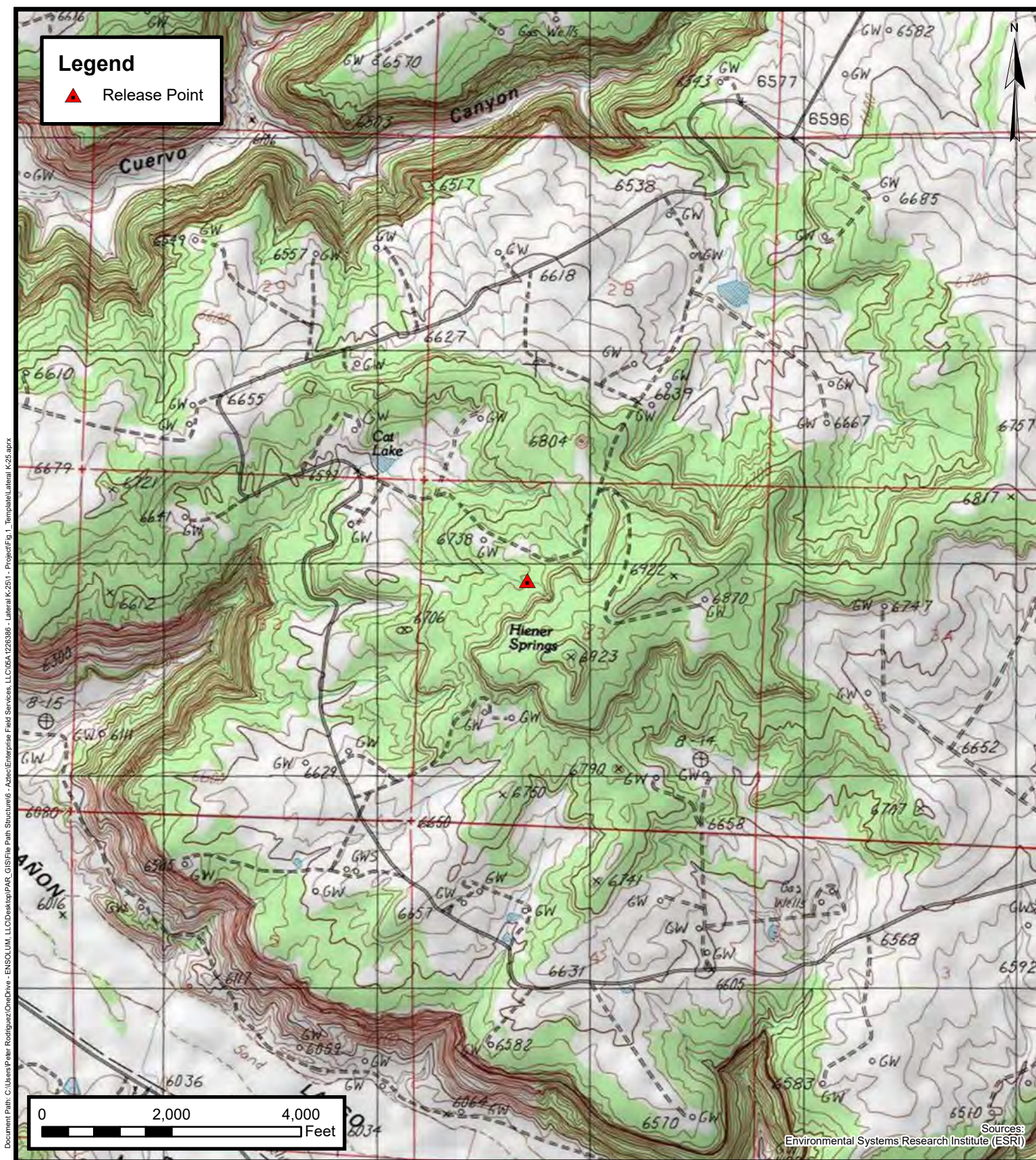




# APPENDIX A

## Figures





## Topographic Map

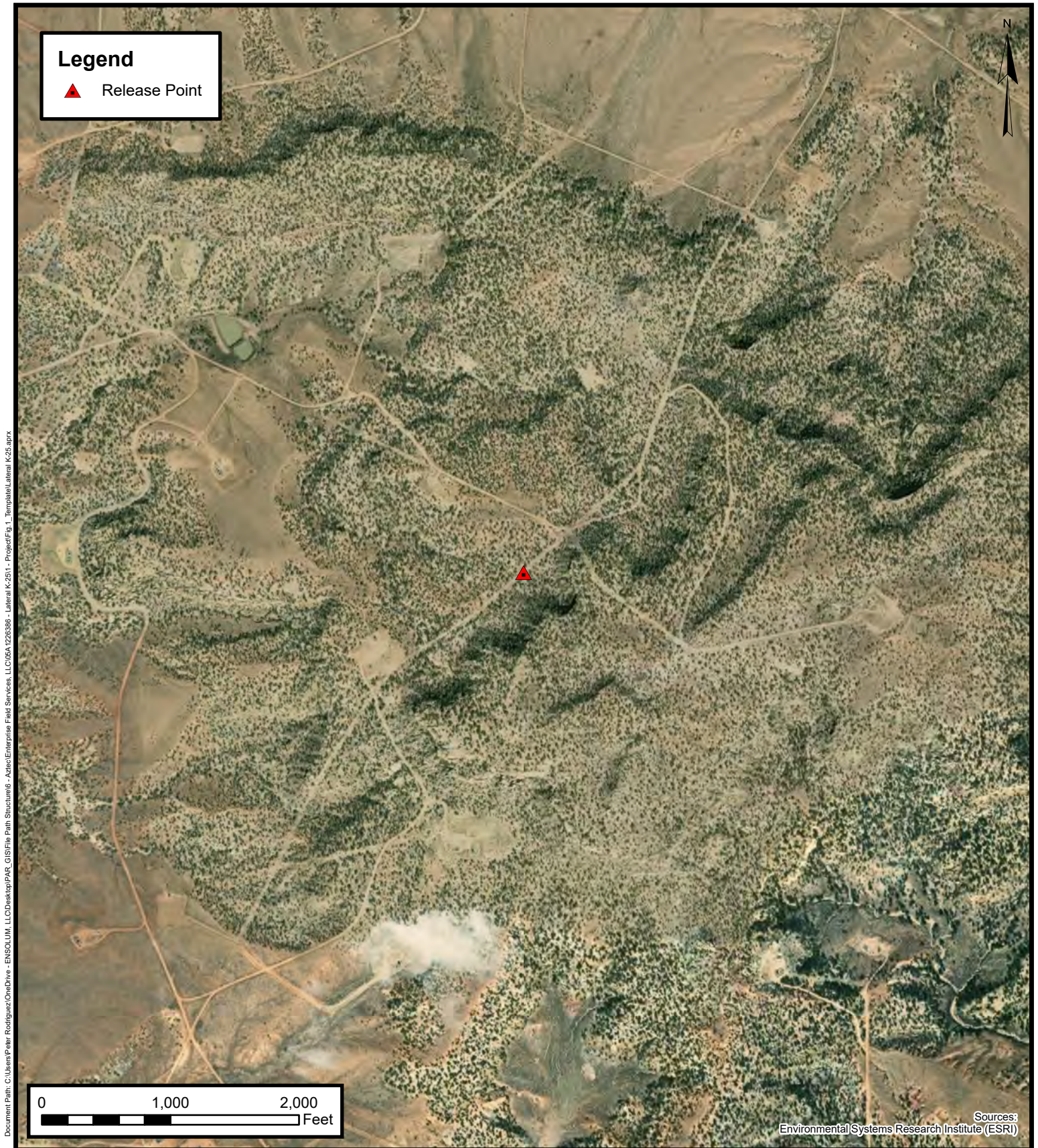
Enterprise Field Services, LLC  
Lateral K-25

Project Number: 05A1226386

Unit Letter F, S33, T27N, R7W, Rio Arriba County, New Mexico  
36.532463, -107.584136

**FIGURE**  
**1**





## Site Vicinity Map

Enterprise Field Services, LLC  
Lateral K-25

Lateral K-25

Project Number: 05A1226386

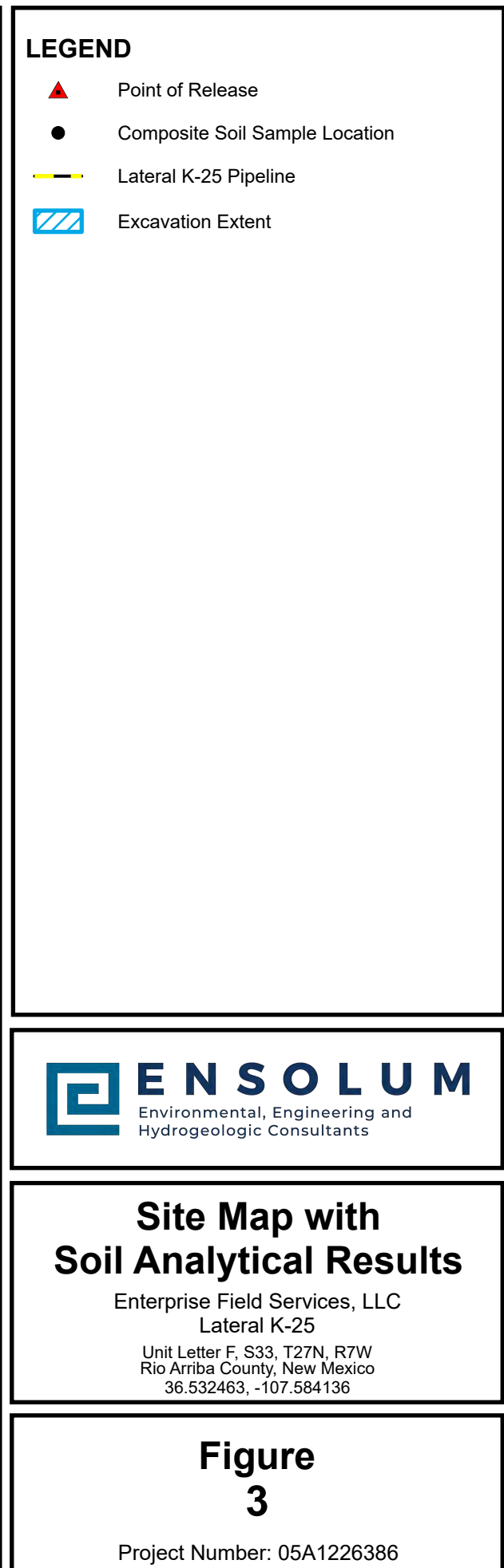
Unit Letter F, S33, T27N, R7W, Rio Arriba County, New Mexico  
36.532463, -107.584136

36.532463, -107.584136

## FIGURE

# 2





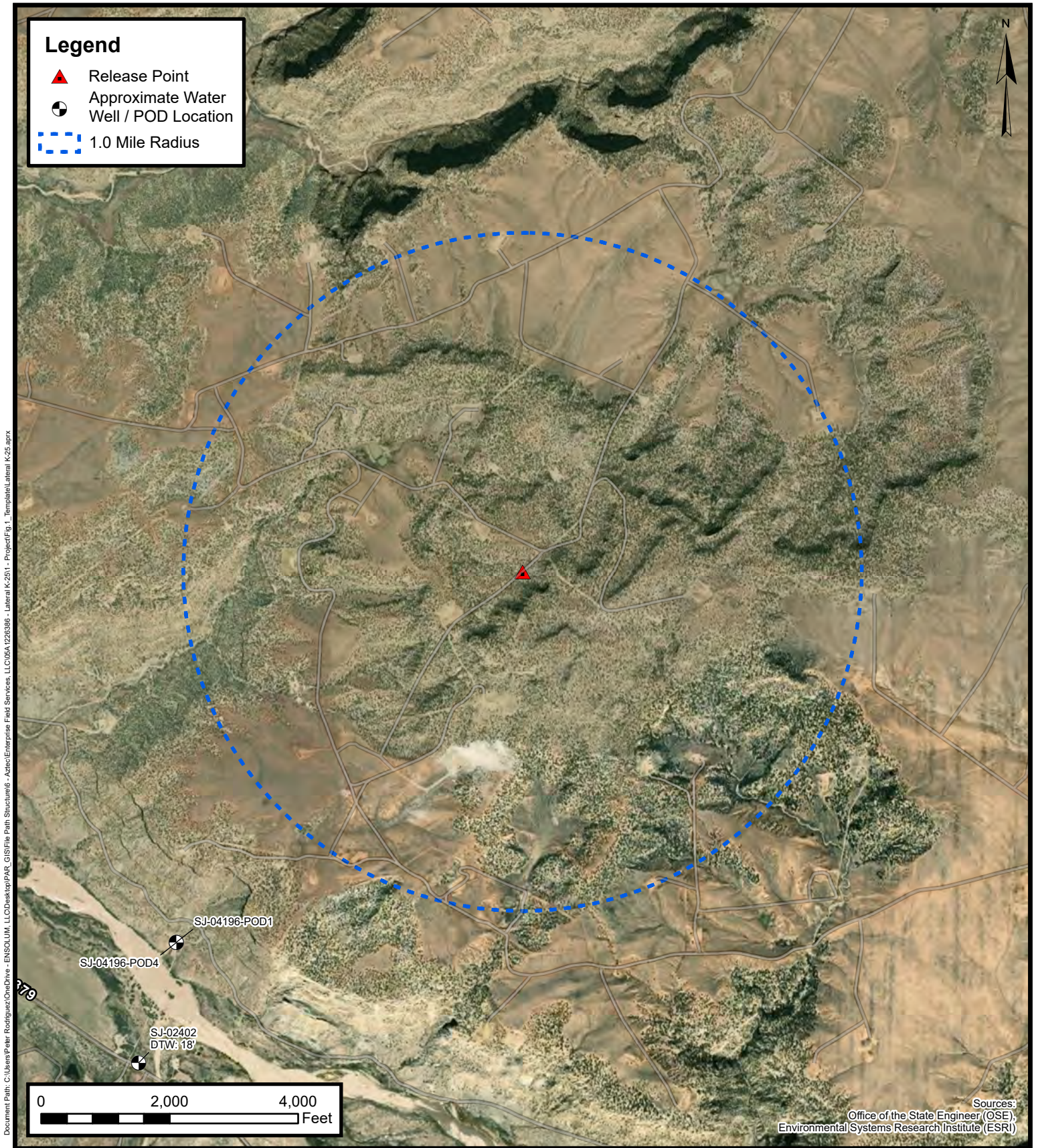


## APPENDIX B

### Siting Figures and Documentation

---





**1.0 Mile Radius Water Well /  
POD Location Map**

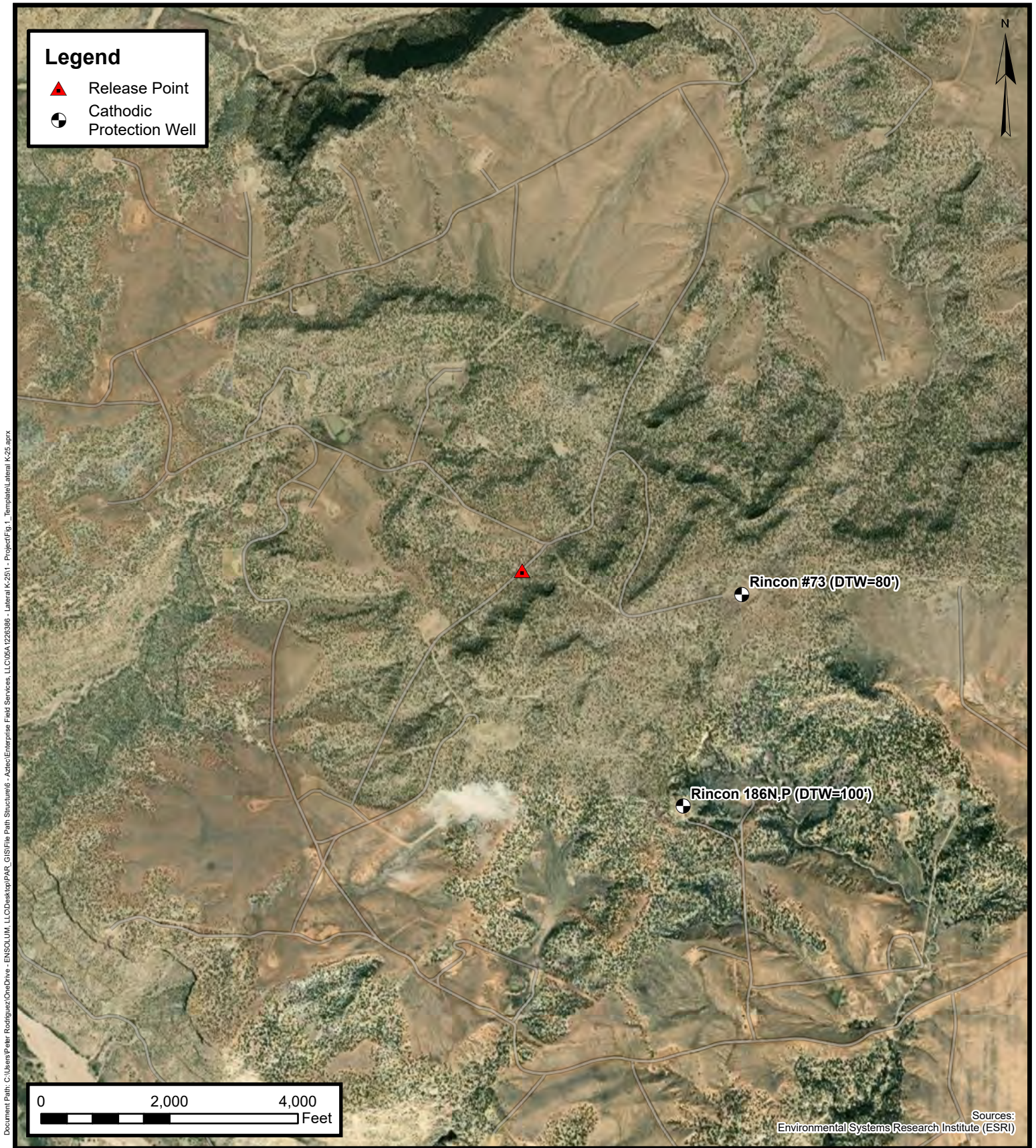
Enterprise Field Services, LLC  
Lateral K-25

Project Number: 05A1226386

Unit Letter F, S33, T27N, R7W, Rio Arriba County, New Mexico  
36.532463, -107.584136

**FIGURE  
A**





### Nearest Cathodic Protection Wells with Recorded Depths to Water

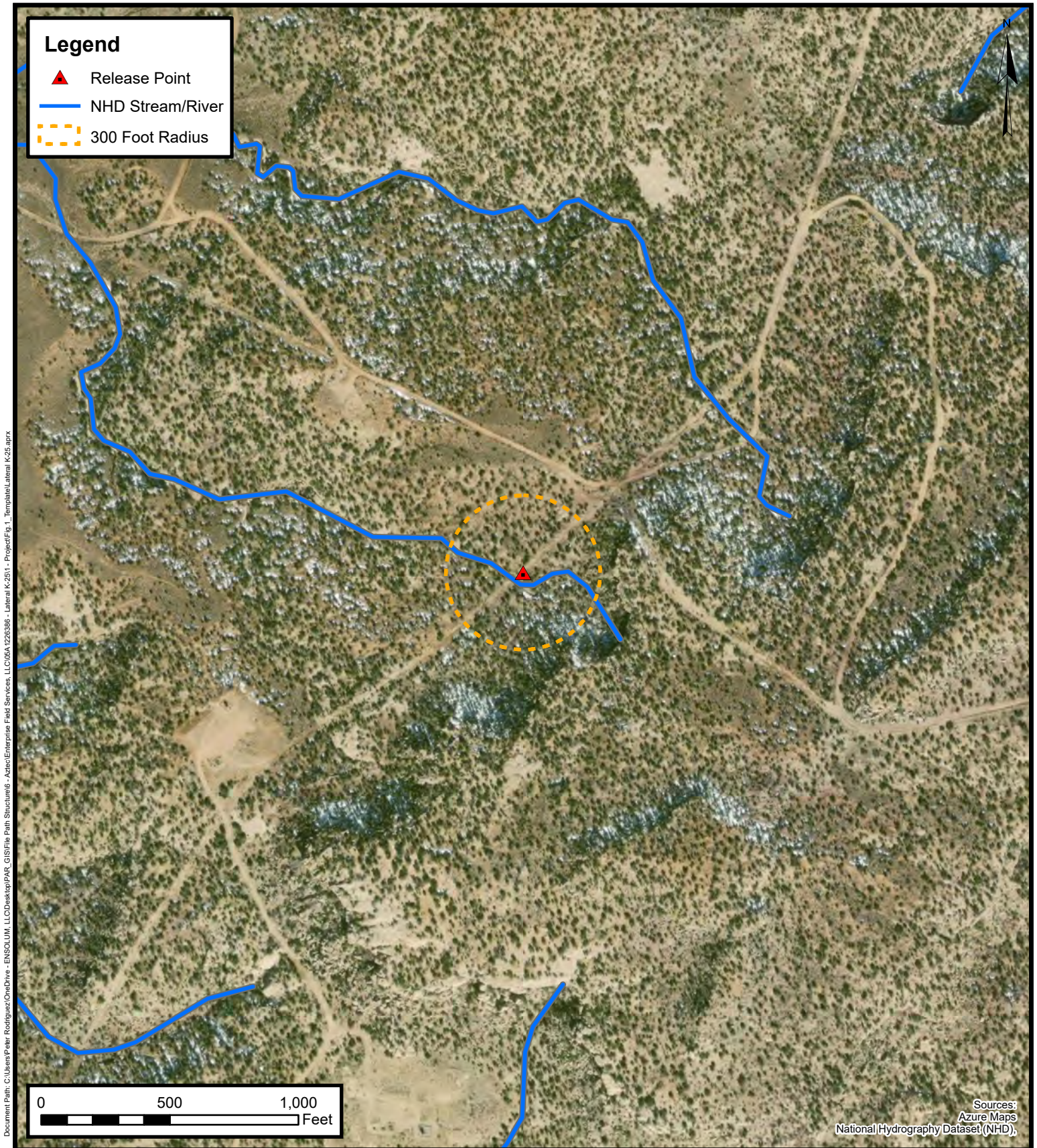
Enterprise Field Services, LLC  
Lateral K-25

Project Number: 05A1226386

Unit Letter F, S33, T27N, R7W, Rio Arriba County, New Mexico  
36.532463, -107.584136

**FIGURE  
B**





### 300 Foot Radius Watercourse and Drainage Identification

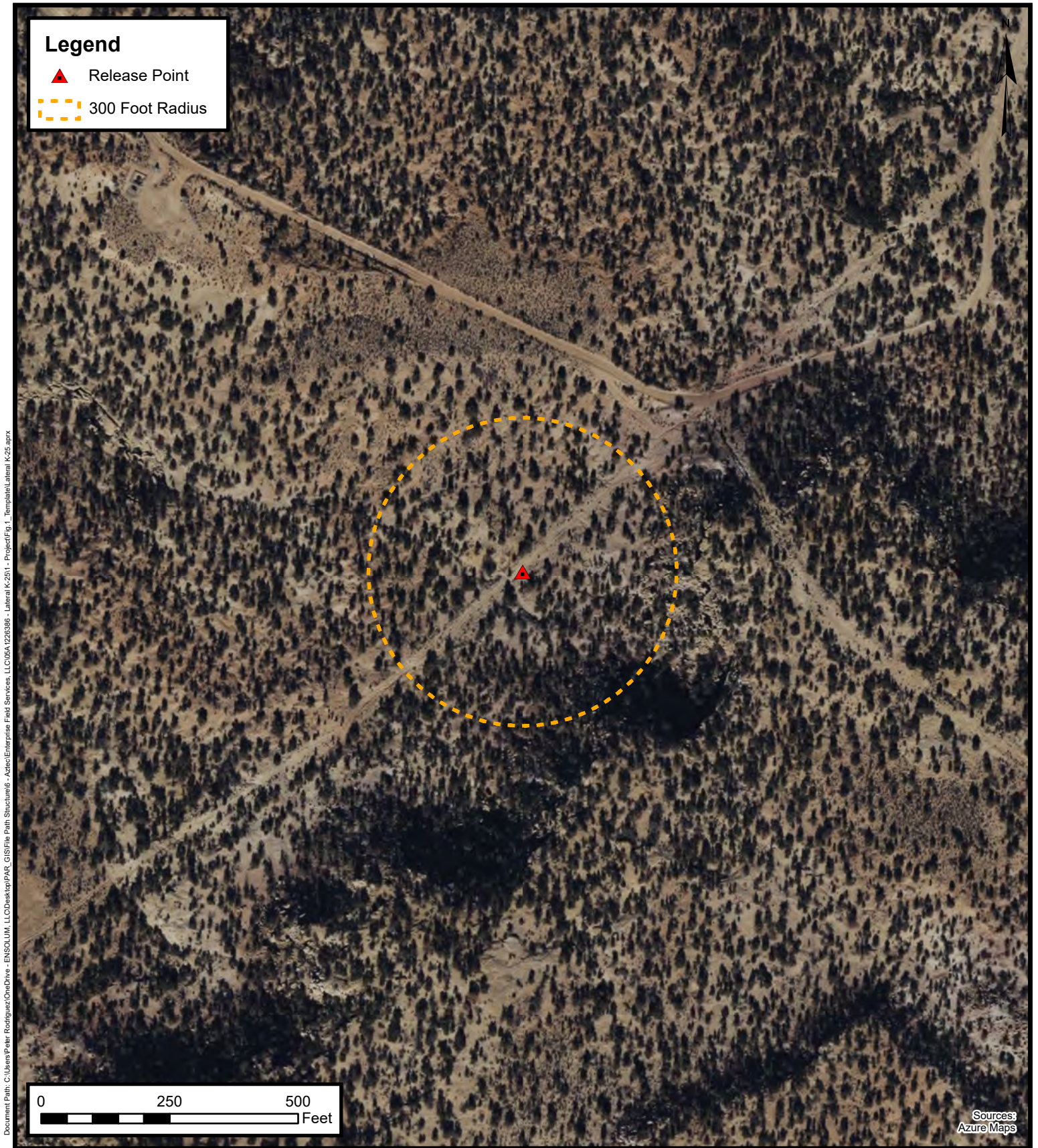
Enterprise Field Services, LLC  
Lateral K-25

Project Number: 05A1226386

Unit Letter F, S33, T27N, R7W, Rio Arriba County, New Mexico  
36.532463, -107.584136

**FIGURE**  
**C**





**300 Foot Radius Occupied  
Structure Identification**

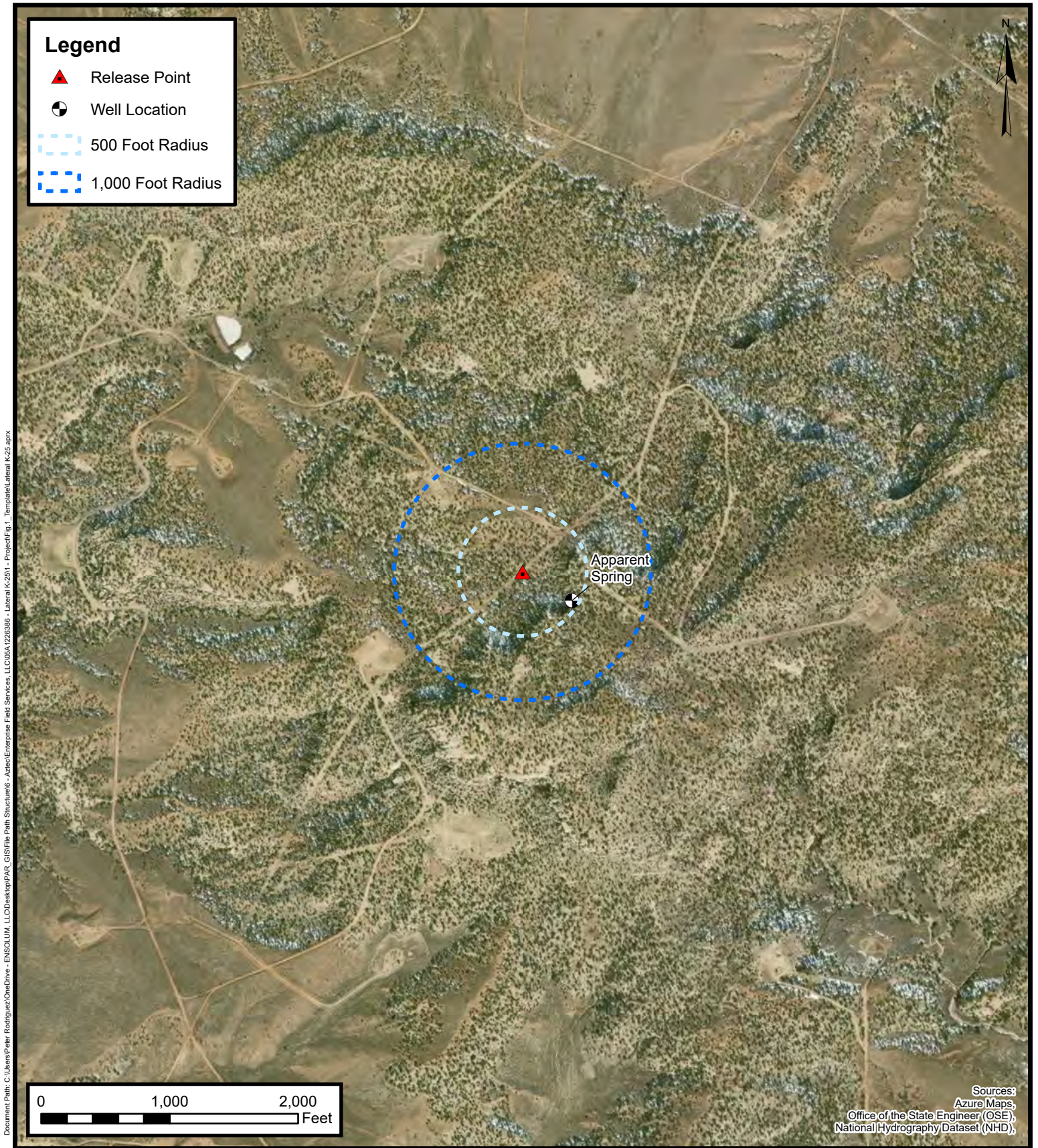
Enterprise Field Services, LLC  
Lateral K-25

Project Number: 05A1226386

Unit Letter F, S33, T27N, R7W, Rio Arriba County, New Mexico  
36.532463, -107.584136

**FIGURE  
D**





## Water Well and Natural Spring Location

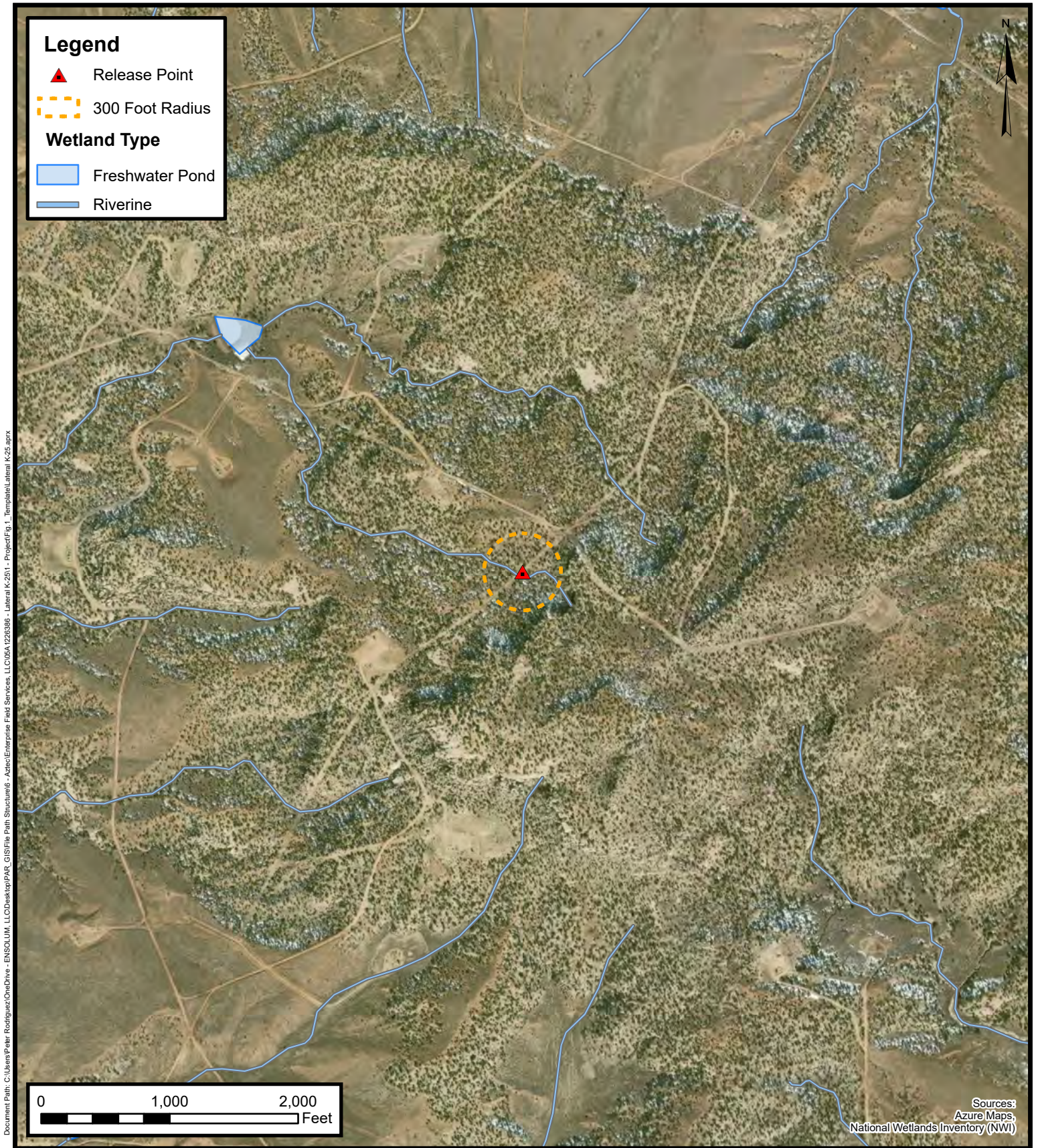
Enterprise Field Services, LLC  
Lateral K-25

Project Number: 05A1226386

Unit Letter F, S33, T27N, R7W, Rio Arriba County, New Mexico  
36.532463, -107.584136

FIGURE  
E





## Wetlands

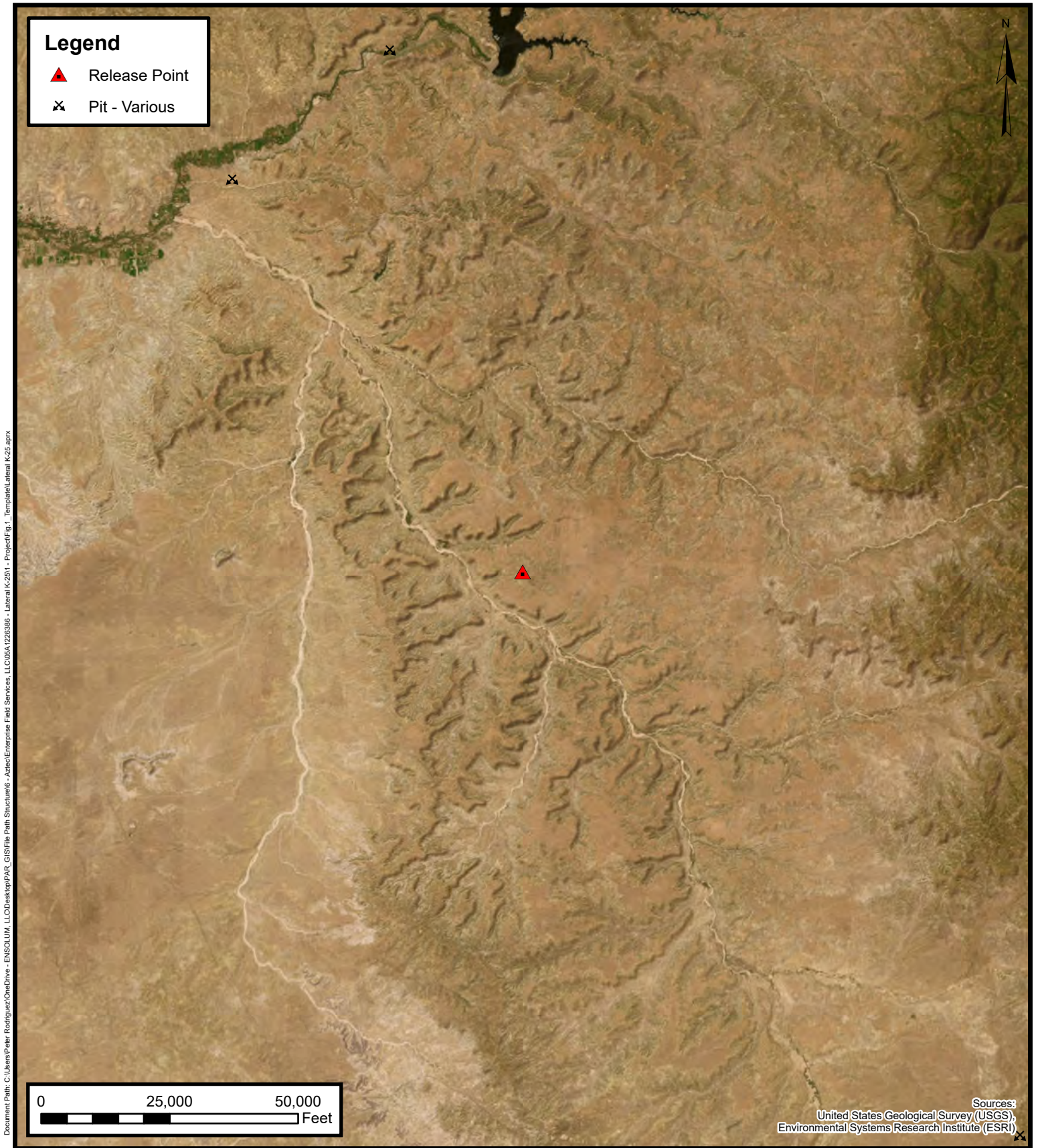
Enterprise Field Services, LLC  
Lateral K-25

Project Number: 05A1226386

Unit Letter F, S33, T27N, R7W, Rio Arriba County, New Mexico  
36.532463, -107.584136

**FIGURE**  
**F**





## Mines, Mills, and Quarries

Enterprise Field Services, LLC  
Lateral K-25

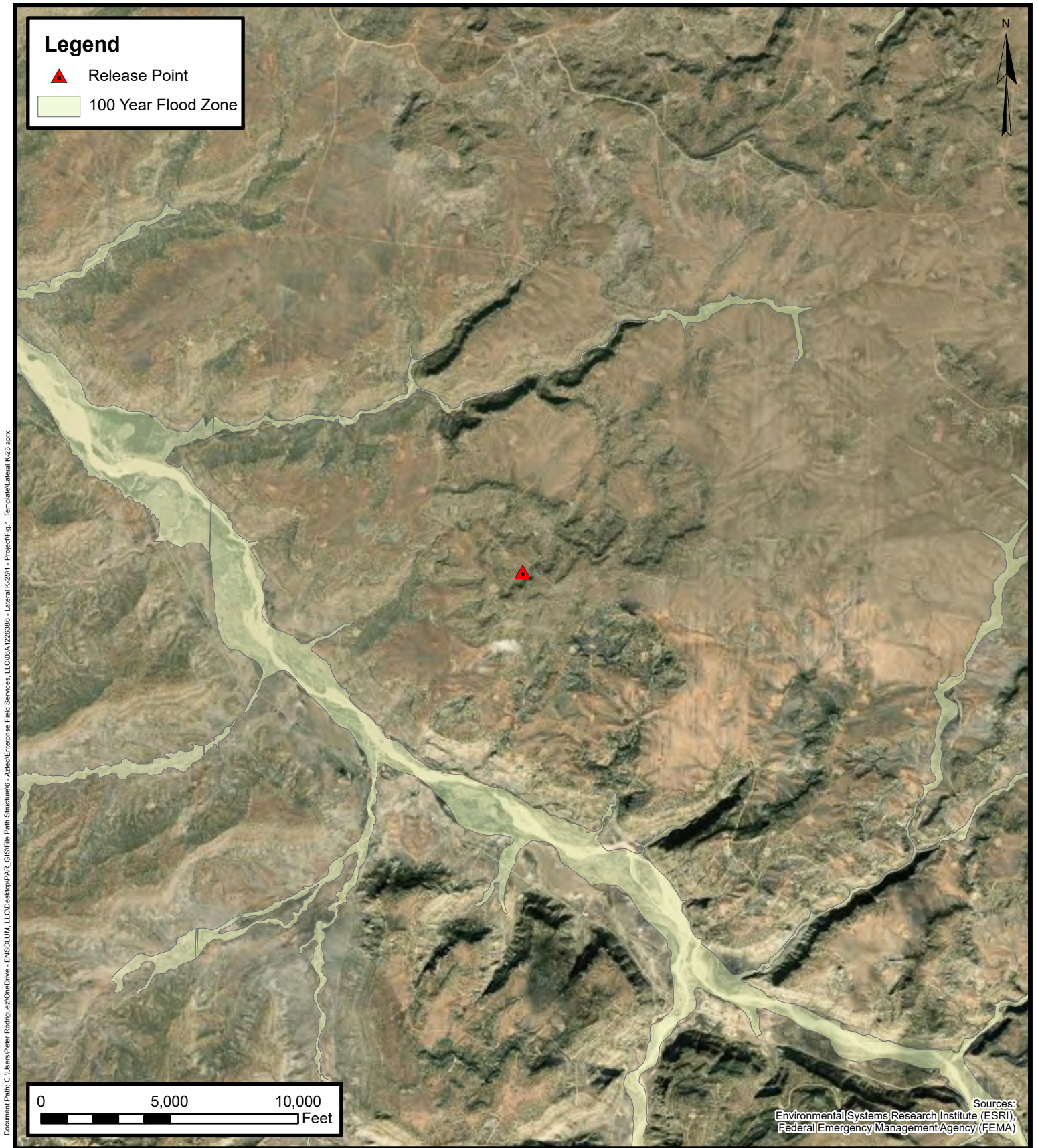
Project Number: 05A1226386

Unit Letter F, S33, T27N, R7W, Rio Arriba County, New Mexico  
36.532463, -107.584136

FIGURE

G





## 100-Year Flood Plain Map

Enterprise Field Services, LLC  
Lateral K-25

Project Number: 05A1226386

Unit Letter F, S33, T27N, R7W, Rio Arriba County, New Mexico  
36.532463, -107.584136

FIGURE  
H



New Mexico Office of the State Engineer

Water Column/Average Depth to Water

(A CLW##### in the POD suffix indicates the POD has been replaced & no longer serves a water right file.) (R=POD has been replaced, O=orphaned, C=the file is closed) (quarters are smallest to largest)

POD Number	Code	Sub basin	County	Q64	Q16	Q4	Sec	Tws	Range	X	Y	Map	Well Depth	Depth Water	Water Column
<a href="#">SJ 02402</a>		SJ	RA	NE	SW	SW	05	26N	07W	266831.0	4043786.0 *		36	18	18

Average Depth to Water: 18 feet

Minimum Depth: 18 feet

Maximum Depth: 18 feet

Record Count: 1

Basin/County Search:

Basin: SJ  
County: RA

PLSS Search:

Range: 07W  
Township: 26N  
Section: 3,4,5

\* UTM location was derived from PLSS - see Help

The data is furnished by the NMOSE/ISC and is accepted by the recipient with the expressed understanding that the OSE/ISC make no warranties, expressed or implied, concerning the accuracy, completeness, reliability, usability, or suitability for any particular purpose of the data.





# New Mexico Office of the State Engineer

## Water Column/Average Depth to Water

---

No report data available.

### **Basin/County Search:**

**Basin:** SJ

**County:** RA

### **PLSS Search:**

**Range:** 07W

**Township:** 27N

**Section:** 27,28,29,32,33,34

\* UTM location was derived from PLSS - see Help

---

The data is furnished by the NMOSE/ISC and is accepted by the recipient with the expressed understanding that the OSE/ISC make no warranties, expressed or implied, concerning the accuracy, completeness, reliability, usability, or suitability for any particular purpose of the data.

---

12-30-039-06780

186-30-039-06783

DATA SHEET FOR DEEP GROUND BED CATHODIC PROTECTION WELLS  
NORTHWESTERN NEW MEXICO

(Submit 3 copies to OCD Aztec Office)

223A-

30-039-22646

Operator UNOCAL Location: Unit        Sec. 33 Twp 27 Rng 7Name of Well/Wells or Pipeline Serviced RINCON UNIT NO. 72, 186NP, & 223AElevation 6638 Completion Date 8-9-90 Total Depth 300' Land Type\* FCasing, Sizes, Types & Depths NONEIf Casing is cemented, show amounts & types used NONEIf Cement or Bentonite Plugs have been placed, show depths & amounts used  
NONE

Depths &amp; thickness of water zones with description of water when possible:

Fresh, Clear, Salty, Sulphur, Etc. 100' deep less than 5' thick, fresh waterDepths gas encountered: NONEType & amount of coke breeze used: 300' deep with carbo 60=99.9% carbon = 2000 lbs.Depths anodes placed: 190', 200', 210', 220', 230', 240'Depths vent pipes placed: 0-300 feet deepVent pipe perforations: From 100' to 300' deep = all vent - laserRemarks: Cut slots.1st ground bed installed at this location.

If any of the above data is unavailable, please indicate so. Copies of all logs, including Drillers Log, Water Analyses &amp; Well Bore Schematics should be submitted when available. Unplugged abandoned wells are to be included.

\*Land Type may be shown: F-Federal; I-Indian; S-State; P-Fee.

If Federal or Indian, add Lease Number.

RECEIVED

JAN 30 1991

OIL CON. DIV.  
DIST. 3

DAY Thursday

DAY <u>Monday</u>			
DRILLER <u>L. A. B.</u>		LEFT TOWN	ARRIVED FIELD
HELPER <u>Dennis</u>		LEFT FIELD	ARRIVED TOWN
HELPER <u>Steve</u>		TOTAL FOOTAGE TODAY	
RIG NO. <u>216</u>	DATE <u>8-9-70</u>	CLIENT <u>Univ. Cal</u>	
BEGIN WORK ON HOLE NO. <u>Rincon # 73</u>	AT	FEET	
BEGIN WORK ON HOLE NO.	AT	FEET	

[illegible]

BIT RECORD		
SIZE & MAKE	SERIAL NO.	FOOTAGE
1 5/8" Spindle Poles - new		
CIRCULATION MATERIAL		
QUAN.	UNIT	MATERIAL

NO. OF LOADS OF WATER 1 SOURCE Louisa Camp

san juan repr farm,nm Form 219-6

30-039-06824

DATA SHEET FOR DEEP GROUND BED CATHODIC PROTECTION WELLS  
NORTHWESTERN NEW MEXICO  
(Submit 3 copies to OCD Aztec Office)

Operator UNOCAL Location: Unit Sec. 33 Twp 27 Rng 7

Name of Well/Wells or Pipeline Serviced Rincon Unit 73

Elevation 6877' Completion Date 11-14-90 Total Depth 300' Land Type\* F

Casing, Sizes, Types & Depths NONE

If Casing is cemented, show amounts & types used NONE

If Cement or Bentonite Plugs have been placed, show depths & amounts used  
NONE

Depths & thickness of water zones with description of water when possible:  
Fresh, Clear, Salty, Sulphur, Etc. 80' deep, damp = 5' thick, fresh

Depths gas encountered: NONE

Type & amount of coke breeze used: 300' deep with carbo-60=99.9 carbon

Depths anodes placed: 230', 240', 250', 260', 270', 280'

Depths vent pipes placed: 0 to 300'

Vent pipe perforations: Laser cut slots from 80' to 300' deep

Remarks: \_\_\_\_\_

If any of the above data is unavailable, please indicate so. Copies of all logs, including Drillers Log, Water Analyses & Well Bore Schematics should be submitted when available. Unplugged abandoned wells are to be included.

\*Land Type may be shown: F-Federal; I-Indian; S-State; P-Fee.  
If Federal or Indian, add Lease Number.

RECEIVED

JAN 30 1991

OIL CON. DIV.

JS 3

COMPANY Unocal JOB No. 751-00084 DATE: 11-14-80  
 WELL: River 73 PIPELINE: \_\_\_\_\_  
 LOCATION: SEC. 33 TWP. 27N RGE. 7W CO. Rio Arriba STATE NM  
 ELEV. \_\_\_\_\_ FT: ROTARY \_\_\_\_\_ FT: CABLE TOOL \_\_\_\_\_ FT: CASING \_\_\_\_\_  
 GROUND BED: DEPTH 300 FT. DIA. 6" IN. GAS 1750 LBS. ANODES Lida 6ea, ST1.6/50

DEPTH, FT.	DRILLER'S LOG	EXPLORING ANODE TO STRUCTURE	NO COKE	WITH COKE	ANODE NO.	DEPTH, TOP OF ANODES
0-20'	Brown Sand + Clay, 20'-60' Brown Shale + Clay					
60' to 80'	Damp					
100'	ALL Vent Pipe - Gray Shale + Sandstone	1.5				
105'	Red + Brown Shale	2.0				
110'		2.0				
115'		2.2				
120'		2.2				
125'		2.4				
130'		2.4				
135'		2.4				
140'	Grey Sandstone w/ Some Shale	2.3				
145'		2.1				
150'		2.0				
155'		1.7				
160'		1.7				
165'		1.4				
170'	First Water, Grey Shale + Sandstone	1.3				
175'		1.2				
180'		1.1				
185'		1.0				
190'		1.4				
195'		1.4				
200'		1.6				
205'		1.5				
210'		1.8				
215'		1.7				
220'		2.1				
225'		2.0				
230'		2.5				6 230
235'		2.3				
240'		2.9				5 240
245'		2.7				
250'		2.8				4 250
255'		2.3		2.9	8.1	
260'		2.7				3 260
265'		2.4				
270'		2.8				2 270
275'		2.9				
280'		2.4				1 280
285'	Gray Sandstone w/ hard black streaks	2.1				
290'		1.9				
295'		2.0				
300'	T 4 D	2.0				

GROUND BED RESISTANCE: (1) VOLTS 12.21 - AMPS 8.1 - 1.51 OHMS

(2) VIBROGROUND \_\_\_\_\_ OHMS

GENERAL CATHODIC PROTECTION SERVICES CO.

A LUKENS COMPANY



## APPENDIX C

### Executed C-138 Solid Waste Acceptance Form



District I  
1625 N. French Dr., Hobbs, NM 88240  
District II  
1301 W. Grand Avenue, Artesia, NM 88210  
District III  
1000 Rio Brazos Road, Aztec, NM 87410  
District IV  
1220 S. St. Francis Dr., Santa Fe, NM 87505

State of New Mexico  
Energy Minerals and Natural Resources  
Oil Conservation Division  
1220 South St. Francis Dr.  
Santa Fe, NM 87505

Form C-138  
Revised 08/01/11

\*Surface Waste Management Facility Operator  
and Generator shall maintain and make this  
documentation available for Division inspection.

## REQUEST FOR APPROVAL TO ACCEPT SOLID WASTE

### 1. Generator Name and Address:

Enterprise Field Services, LLC, 614 Reilly Ave, Farmington NM 87401

PayKey: AM14058  
PM: Dwayne Dixon  
AFE: N82023

### 2. Originating Site:

Lateral K-25

### 3. Location of Material (Street Address, City, State or ULSTR):

UL F Section 33 T27N R7W; 36.532463, -107.584136

### 4. Source and Description of Waste:

Source: Remediation activities associated with a natural gas pipeline leak.

Description: Hydrocarbon/Condensate impacted soil associated natural gas pipeline release.

Estimated Volume 50 yd<sup>3</sup> / bbls Known Volume (to be entered by the operator at the end of the haul) 96/10 yd<sup>3</sup> / bbls

### 5. GENERATOR CERTIFICATION STATEMENT OF WASTE STATUS

I, Thomas Long *Thomas Long*, representative or authorized agent for Enterprise Products Operating do hereby

#### Generator Signature

certify that according to the Resource Conservation and Recovery Act (RCRA) and the US Environmental Protection Agency's July 1988 regulatory determination, the above described waste is: (Check the appropriate classification)

☒ RCRA Exempt: Oil field wastes generated from oil and gas exploration and production operations and are not mixed with non-exempt waste. Operator Use Only: Waste Acceptance Frequency ☐ Monthly ☐ Weekly ☐ Per Load

☐ RCRA Non-Exempt: Oil field waste which is non-hazardous that does not exceed the minimum standards for waste hazardous by characteristics established in RCRA regulations, 40 CFR 261.21-261.24, or listed hazardous waste as defined in 40 CFR, part 261, subpart D, as amended. The following documentation is attached to demonstrate the above-described waste is non-hazardous. (Check the appropriate items)

☐ MSDS Information ☐ RCRA Hazardous Waste Analysis ☐ Process Knowledge ☐ Other (Provide description in Box 4)

### GENERATOR 19.15.36.15 WASTE TESTING CERTIFICATION STATEMENT FOR LANDFARMS

I, Thomas Long *Thomas Long* 8-12-2025, representative for Enterprise Products Operating authorizes Envirotech, Inc. to complete

#### Generator Signature

the required testing/sign the Generator Waste Testing Certification.

I, Greg Crabtree, representative for Envirotech, Inc. do hereby certify that representative samples of the oil field waste have been subjected to the paint filter test and tested for chloride content and that the samples have been found to conform to the specific requirements applicable to landfarms pursuant to Section 15 of 19.15.36 NMAC. The results of the representative samples are attached to demonstrate the above-described waste conform to the requirements of Section 15 of 19.15.36 NMAC.

### 5. Transporter: Enterprise Contractors.

#### OCD Permitted Surface Waste Management Facility

Name and Facility Permit #: **Envirotech Inc. Soil Remediation Facility \* Permit #: NM 01-0011**

Address of Facility: **Hilltop, NM**

Method of Treatment and/or Disposal:

☐ Evaporation ☐ Injection ☐ Treating Plant ☒ Landfarm ☐ Landfill ☐ Other

#### Waste Acceptance Status:

☒ **APPROVED**

☐ **DENIED** (Must Be Maintained As Permanent Record)

PRINT NAME: Greg Crabtree

SIGNATURE: *Greg Crabtree*

Surface Waste Management Facility Authorized Agent

TITLE: Enviro Manager

TELEPHONE NO.:

505-632-0615

DATE: 8/18/25





## APPENDIX D

# Photographic Documentation

## SITE PHOTOGRAPHS

Enterprise Field Services, LLC  
Closure Report  
Lateral K-25 Pipeline Release  
Ensolum Project No. 05A1226386

**Photograph 1**

Photograph Description: View of the initial excavation.

**Photograph 2**

Photograph Description: View of the in process excavation activities.

**Photograph 3**

Photograph Description: View of final excavation.





## SITE PHOTOGRAPHS

Enterprise Field Services, LLC  
Closure Report  
Lateral K-25 Pipeline Release  
Ensolum Project No. 05A1226386

**Photograph 4**

Photograph Description: View of the final excavation after initial restoration.

**Photograph 5**

Photograph Description: View of the final excavation after initial restoration.





## APPENDIX E

# Regulatory Correspondence

**Chad D'Aponti**

---

**From:** Long, Thomas <tjlong@eprod.com>  
**Sent:** Thursday, August 21, 2025 9:32 AM  
**To:** Kyle Summers; Chad D'Aponti  
**Subject:** FW: [EXTERNAL] The Oil Conservation Division (OCD) has accepted the application, Application ID: 498089

[ \*\*EXTERNAL EMAIL\*\* ]

Lateral K-25.

Thomas J. Long  
Senior Environmental Scientist  
Enterprise Products Company  
614 Reilly Ave.  
Farmington, New Mexico 87401  
505-599-2286 (office)  
505-215-4727 (Cell)  
[tjlong@eprod.com](mailto:tjlong@eprod.com)



---

**From:** OCDOnline@state.nm.us <OCDOnline@state.nm.us>  
**Sent:** Thursday, August 21, 2025 9:30 AM  
**To:** Long, Thomas <tjlong@eprod.com>  
**Subject:** [EXTERNAL] The Oil Conservation Division (OCD) has accepted the application, Application ID: 498089

[Use caution with links/attachments]

To whom it may concern (c/o Thomas Long for Enterprise Field Services, LLC),

The OCD has received the submitted *Notification for (Final) Sampling of a Release* (C-141N), for incident ID (n#) nAPP2523233981.

The sampling event is expected to take place:

**When:** 08/25/2025 @ 10:00

**Where:** F-33-27N-07W 0 FNL 0 FEL (36.532463,-107.584136)

**Additional Information:** Ensolum, LLC

**Additional Instructions:** 36.532463,-107.584136

An OCD representative may be available onsite at the date and time reported. In the absence or presence of an OCD representative, sampling pursuant to 19.15.29.12.D NMAC is required. Sampling must be performed following an approved sampling plan or pursuant to 19.15.29.12.D.(1).(c) NMAC.

Should there be a change in the scheduled date and time of the sampling event, then another notification should be resubmitted through OCD permitting as soon as possible.

- **Failure to notify the OCD of sampling events including any changes in date/time per the requirements of 19.15.29.12.D.(1).(a) NMAC, may result in the remediation closure samples not being accepted.**
- **If confirmation sampling is going to take place over multiple days, individual C-141N applications must be submitted for each sampling date. Date ranges are not currently accepted on the C-141N application.**

If you have any questions regarding this application, or don't know why you have received this email, please contact us.

**New Mexico Energy, Minerals and Natural Resources Department**

1220 South St. Francis Drive

Santa Fe, NM 87505

---

This message (including any attachments) is confidential and intended for a specific individual and purpose. If you are not the intended recipient, please notify the sender immediately and delete this message.



## APPENDIX F

### Table 1 – Soil Analytical Summary

---





**TABLE 1**  
Lateral K-25  
SOIL ANALYTICAL SUMMARY

Sample I.D.	Date	Sample Type	Sample Depth	Benzene	Ethylbenzene	Toluene	Xylenes	Total BTEX <sup>1</sup>	TPH GRO	TPH DRO	TPH MRO	Total Combined TPH (GRO/DRO/MRO) <sup>1</sup>	Chloride
		C- Composite G - Grab	(feet)	(mg/kg)	(mg/kg)	(mg/kg)	(mg/kg)	(mg/kg)	(mg/kg)	(mg/kg)	(mg/kg)	(mg/kg)	(mg/kg)
New Mexico Energy, Mineral & Natural Resources Department Oil Conservation Division Closure Criteria (Tier I)				10	NE	NE	NE	50	NE	NE	NE	100	600
Excavation Composite Soil Samples													
S-1	8.25.25	C	4	<0.019	<0.038	<0.038	<0.077	ND	<3.8	<9.5	<48	ND	<50
S-2	8.25.25	C	4	<0.019	<0.037	<0.037	<0.074	ND	<3.7	<9.4	<47	ND	<50
S-3	8.25.25	C	0 to 4	<0.021	<0.041	<0.041	<0.082	ND	<4.1	<9.6	<48	ND	<50
S-4	8.25.25	C	0 to 4	<0.020	<0.039	<0.039	<0.079	ND	<3.9	<9.6	<48	ND	<50
S-5	8.25.25	C	0 to 4	<0.018	<0.035	<0.035	<0.071	ND	<3.5	<9.7	<49	ND	<50
S-6	8.25.25	C	0 to 4	<0.032	<0.063	<0.063	<0.13	ND	<6.3	12	<50	12	<50
Backfill Composite Soil Sample													
BF-1	8.25.25	C	Backfill	<0.018	<0.036	<0.036	<0.072	ND	<3.6	<9.7	<48	ND	<50

Note: Concentrations in **bold** and yellow exceed the applicable NM EMNRD Closure Criteria

<sup>1</sup> = Total combined concentrations are rounded to two (2) or three (3) significant figures (depending on which laboratory was used) to match the laboratory resolution of the individual constituents.

ND = Not Detected above the Practical Quantitation Limits (PQLs) or Reporting Limits (RLs)

NE = Not established

mg/kg = milligrams per kilogram

BTEX = Benzene, Toluene, Ethylbenzene, and Xylenes

TPH = Total Petroleum Hydrocarbons

GRO = Gasoline Range Organics

DRO = Diesel Range Organics

MRO = Motor Oil/Lube Oil Range Organics

BF = Backfill sample



## APPENDIX G

### Laboratory Data Sheets & Chain of Custody Documentation

---



Environment Testing

1

2

3

4

5

6

7

8

9

10

11

# ANALYTICAL REPORT

## PREPARED FOR

Attn: Kyle Summers  
Ensolum  
606 S Rio Grande  
Suite A  
Aztec, New Mexico 87410  
Generated 8/28/2025 8:21:40 AM

## JOB DESCRIPTION

Lateral K-25

## JOB NUMBER

885-31785-1

Eurofins Albuquerque  
4901 Hawkins NE  
Albuquerque NM 87109

# Eurofins Albuquerque

## Job Notes

The test results in this report relate only to the samples as received by the laboratory and will meet all requirements of the methodology, with any exceptions noted. This report shall not be reproduced except in full, without the express written approval of the laboratory. All questions should be directed to the Eurofins Environment Testing South Central, LLC Project Manager.

## Authorization



Generated  
8/28/2025 8:21:40 AM

Authorized for release by  
John Caldwell, Project Manager  
[john.caldwell@et.eurofinsus.com](mailto:john.caldwell@et.eurofinsus.com)  
(505)345-3975

Client: Ensolum  
Project/Site: Lateral K-25

Laboratory Job ID: 885-31785-1

# Table of Contents

Cover Page . . . . .	1
Table of Contents . . . . .	3
Definitions/Glossary . . . . .	4
Case Narrative . . . . .	5
Client Sample Results . . . . .	6
QC Sample Results . . . . .	13
QC Association Summary . . . . .	17
Lab Chronicle . . . . .	19
Certification Summary . . . . .	22
Chain of Custody . . . . .	23
Receipt Checklists . . . . .	24



## Definitions/Glossary

Client: Ensolum  
Project/Site: Lateral K-25

Job ID: 885-31785-1

**Glossary**

Abbreviation	These commonly used abbreviations may or may not be present in this report.
☼	Listed under the "D" column to designate that the result is reported on a dry weight basis
%R	Percent Recovery
CFL	Contains Free Liquid
CFU	Colony Forming Unit
CNF	Contains No Free Liquid
DER	Duplicate Error Ratio (normalized absolute difference)
Dil Fac	Dilution Factor
DL	Detection Limit (DoD/DOE)
DL, RA, RE, IN	Indicates a Dilution, Re-analysis, Re-extraction, or additional Initial metals/anion analysis of the sample
DLC	Decision Level Concentration (Radiochemistry)
EDL	Estimated Detection Limit (Dioxin)
LOD	Limit of Detection (DoD/DOE)
LOQ	Limit of Quantitation (DoD/DOE)
MCL	EPA recommended "Maximum Contaminant Level"
MDA	Minimum Detectable Activity (Radiochemistry)
MDC	Minimum Detectable Concentration (Radiochemistry)
MDL	Method Detection Limit
ML	Minimum Level (Dioxin)
MPN	Most Probable Number
MQL	Method Quantitation Limit
NC	Not Calculated
ND	Not Detected at the reporting limit (or MDL or EDL if shown)
NEG	Negative / Absent
POS	Positive / Present
PQL	Practical Quantitation Limit
PRES	Presumptive
QC	Quality Control
RER	Relative Error Ratio (Radiochemistry)
RL	Reporting Limit or Requested Limit (Radiochemistry)
RPD	Relative Percent Difference, a measure of the relative difference between two points
TEF	Toxicity Equivalent Factor (Dioxin)
TEQ	Toxicity Equivalent Quotient (Dioxin)
TNTC	Too Numerous To Count

Eurofins Albuquerque



# Case Narrative

Client: Ensolum  
Project: Lateral K-25

Job ID: 885-31785-1

Job ID: 885-31785-1

Eurofins Albuquerque

## Job Narrative 885-31785-1

The analytical test results presented in this report meet all requirements of the associated regulatory program listed on the Accreditation/Certification Summary Page, unless otherwise noted. Data qualifiers and/or narrative comments are included to explain any exceptions, if applicable. Regulated compliance samples (e.g. SDWA, NPDES) must comply with associated agency requirements/permits.

- Matrix-specific batch QC (e.g., MS, MSD, SD) may not be reported when insufficient sample volume is available or when site-specific QC samples are not submitted. In such cases, a Laboratory Control Sample Duplicate (LCSD) may be analyzed to provide precision data for the batch.
- For samples analyzed using surrogate and/or isotope dilution analytes, any recoveries falling outside of established acceptance criteria are re-prepared and/or re-analyzed to confirm results, unless the deviation is due to sample dilution or otherwise explained in the case narrative.

### Receipt

The samples were received on 8/26/2025 7:40 AM. Unless otherwise noted below, the samples arrived in good condition, and, where required, properly preserved and on ice. The temperature of the cooler at receipt time was 4.1°C.

### Gasoline Range Organics

No additional analytical or quality issues were noted, other than those described above or in the Definitions/ Glossary page.

### GC VOA

No additional analytical or quality issues were noted, other than those described above or in the Definitions/ Glossary page.

### Diesel Range Organics

No additional analytical or quality issues were noted, other than those described above or in the Definitions/ Glossary page.

### HPLC/IC

No additional analytical or quality issues were noted, other than those described above or in the Definitions/ Glossary page.

Eurofins Albuquerque

## Client Sample Results

Client: Ensolum  
Project/Site: Lateral K-25

Job ID: 885-31785-1

Client Sample ID: S-1

Lab Sample ID: 885-31785-1

Date Collected: 08/25/25 10:00

Matrix: Solid

Date Received: 08/26/25 07:40

## Method: SW846 8015M/D - Gasoline Range Organics (GRO) (GC)

Analyte	Result	Qualifier	RL	Unit	D	Prepared	Analyzed	Dil Fac
Gasoline Range Organics [C6 - C10]	ND		3.8	mg/Kg		08/26/25 09:22	08/26/25 11:29	1
Surrogate	%Recovery	Qualifier	Limits			Prepared	Analyzed	Dil Fac
4-Bromofluorobenzene (Surr)	86		15 - 150			08/26/25 09:22	08/26/25 11:29	1

## Method: SW846 8021B - Volatile Organic Compounds (GC)

Analyte	Result	Qualifier	RL	Unit	D	Prepared	Analyzed	Dil Fac
Benzene	ND		0.019	mg/Kg		08/26/25 09:22	08/26/25 11:29	1
Ethylbenzene	ND		0.038	mg/Kg		08/26/25 09:22	08/26/25 11:29	1
Toluene	ND		0.038	mg/Kg		08/26/25 09:22	08/26/25 11:29	1
Xylenes, Total	ND		0.077	mg/Kg		08/26/25 09:22	08/26/25 11:29	1
Surrogate	%Recovery	Qualifier	Limits			Prepared	Analyzed	Dil Fac
4-Bromofluorobenzene (Surr)	81		15 - 150			08/26/25 09:22	08/26/25 11:29	1

## Method: SW846 8015M/D - Diesel Range Organics (DRO) (GC)

Analyte	Result	Qualifier	RL	Unit	D	Prepared	Analyzed	Dil Fac
Diesel Range Organics [C10-C28]	ND		9.5	mg/Kg		08/26/25 09:17	08/26/25 11:07	1
Motor Oil Range Organics [C28-C40]	ND		48	mg/Kg		08/26/25 09:17	08/26/25 11:07	1
Surrogate	%Recovery	Qualifier	Limits			Prepared	Analyzed	Dil Fac
Di-n-octyl phthalate (Surr)	102		62 - 134			08/26/25 09:17	08/26/25 11:07	1

## Method: EPA 300.0 - Anions, Ion Chromatography

Analyte	Result	Qualifier	RL	Unit	D	Prepared	Analyzed	Dil Fac
Chloride	ND		50	mg/Kg		08/26/25 09:57	08/26/25 11:43	10

Eurofins Albuquerque

## Client Sample Results

Client: Ensolum  
Project/Site: Lateral K-25

Job ID: 885-31785-1

Client Sample ID: S-2

Lab Sample ID: 885-31785-2

Date Collected: 08/25/25 10:05

Matrix: Solid

Date Received: 08/26/25 07:40

## Method: SW846 8015M/D - Gasoline Range Organics (GRO) (GC)

Analyte	Result	Qualifier	RL	Unit	D	Prepared	Analyzed	Dil Fac
Gasoline Range Organics [C6 - C10]	ND		3.7	mg/Kg		08/26/25 09:22	08/26/25 11:52	1
Surrogate	%Recovery	Qualifier	Limits			Prepared	Analyzed	Dil Fac
4-Bromofluorobenzene (Surr)	85		15 - 150			08/26/25 09:22	08/26/25 11:52	1

## Method: SW846 8021B - Volatile Organic Compounds (GC)

Analyte	Result	Qualifier	RL	Unit	D	Prepared	Analyzed	Dil Fac
Benzene	ND		0.019	mg/Kg		08/26/25 09:22	08/26/25 11:52	1
Ethylbenzene	ND		0.037	mg/Kg		08/26/25 09:22	08/26/25 11:52	1
Toluene	ND		0.037	mg/Kg		08/26/25 09:22	08/26/25 11:52	1
Xylenes, Total	ND		0.074	mg/Kg		08/26/25 09:22	08/26/25 11:52	1
Surrogate	%Recovery	Qualifier	Limits			Prepared	Analyzed	Dil Fac
4-Bromofluorobenzene (Surr)	81		15 - 150			08/26/25 09:22	08/26/25 11:52	1

## Method: SW846 8015M/D - Diesel Range Organics (DRO) (GC)

Analyte	Result	Qualifier	RL	Unit	D	Prepared	Analyzed	Dil Fac
Diesel Range Organics [C10-C28]	ND		9.4	mg/Kg		08/26/25 09:17	08/26/25 11:19	1
Motor Oil Range Organics [C28-C40]	ND		47	mg/Kg		08/26/25 09:17	08/26/25 11:19	1
Surrogate	%Recovery	Qualifier	Limits			Prepared	Analyzed	Dil Fac
Di-n-octyl phthalate (Surr)	102		62 - 134			08/26/25 09:17	08/26/25 11:19	1

## Method: EPA 300.0 - Anions, Ion Chromatography

Analyte	Result	Qualifier	RL	Unit	D	Prepared	Analyzed	Dil Fac
Chloride	ND		50	mg/Kg		08/26/25 09:57	08/26/25 11:53	10

Eurofins Albuquerque

## Client Sample Results

Client: Ensolum  
Project/Site: Lateral K-25

Job ID: 885-31785-1

Client Sample ID: S-3

Lab Sample ID: 885-31785-3

Date Collected: 08/25/25 10:15

Matrix: Solid

Date Received: 08/26/25 07:40

## Method: SW846 8015M/D - Gasoline Range Organics (GRO) (GC)

Analyte	Result	Qualifier	RL	Unit	D	Prepared	Analyzed	Dil Fac
Gasoline Range Organics [C6 - C10]	ND		4.1	mg/Kg		08/26/25 09:22	08/26/25 12:16	1
Surrogate	%Recovery	Qualifier	Limits			Prepared	Analyzed	Dil Fac
4-Bromofluorobenzene (Surr)	86		15 - 150			08/26/25 09:22	08/26/25 12:16	1

## Method: SW846 8021B - Volatile Organic Compounds (GC)

Analyte	Result	Qualifier	RL	Unit	D	Prepared	Analyzed	Dil Fac
Benzene	ND		0.021	mg/Kg		08/26/25 09:22	08/26/25 12:16	1
Ethylbenzene	ND		0.041	mg/Kg		08/26/25 09:22	08/26/25 12:16	1
Toluene	ND		0.041	mg/Kg		08/26/25 09:22	08/26/25 12:16	1
Xylenes, Total	ND		0.082	mg/Kg		08/26/25 09:22	08/26/25 12:16	1
Surrogate	%Recovery	Qualifier	Limits			Prepared	Analyzed	Dil Fac
4-Bromofluorobenzene (Surr)	82		15 - 150			08/26/25 09:22	08/26/25 12:16	1

## Method: SW846 8015M/D - Diesel Range Organics (DRO) (GC)

Analyte	Result	Qualifier	RL	Unit	D	Prepared	Analyzed	Dil Fac
Diesel Range Organics [C10-C28]	ND		9.6	mg/Kg		08/26/25 09:17	08/26/25 11:31	1
Motor Oil Range Organics [C28-C40]	ND		48	mg/Kg		08/26/25 09:17	08/26/25 11:31	1
Surrogate	%Recovery	Qualifier	Limits			Prepared	Analyzed	Dil Fac
Di-n-octyl phthalate (Surr)	103		62 - 134			08/26/25 09:17	08/26/25 11:31	1

## Method: EPA 300.0 - Anions, Ion Chromatography

Analyte	Result	Qualifier	RL	Unit	D	Prepared	Analyzed	Dil Fac
Chloride	ND		50	mg/Kg		08/26/25 09:57	08/26/25 12:03	10

Eurofins Albuquerque

## Client Sample Results

Client: Ensolum  
Project/Site: Lateral K-25

Job ID: 885-31785-1

Client Sample ID: S-4

Lab Sample ID: 885-31785-4

Date Collected: 08/25/25 10:20

Matrix: Solid

Date Received: 08/26/25 07:40

## Method: SW846 8015M/D - Gasoline Range Organics (GRO) (GC)

Analyte	Result	Qualifier	RL	Unit	D	Prepared	Analyzed	Dil Fac
Gasoline Range Organics [C6 - C10]	ND		3.9	mg/Kg		08/26/25 09:22	08/26/25 12:40	1
Surrogate	%Recovery	Qualifier	Limits			Prepared	Analyzed	Dil Fac
4-Bromofluorobenzene (Surr)	90		15 - 150			08/26/25 09:22	08/26/25 12:40	1

## Method: SW846 8021B - Volatile Organic Compounds (GC)

Analyte	Result	Qualifier	RL	Unit	D	Prepared	Analyzed	Dil Fac
Benzene	ND		0.020	mg/Kg		08/26/25 09:22	08/26/25 12:40	1
Ethylbenzene	ND		0.039	mg/Kg		08/26/25 09:22	08/26/25 12:40	1
Toluene	ND		0.039	mg/Kg		08/26/25 09:22	08/26/25 12:40	1
Xylenes, Total	ND		0.079	mg/Kg		08/26/25 09:22	08/26/25 12:40	1
Surrogate	%Recovery	Qualifier	Limits			Prepared	Analyzed	Dil Fac
4-Bromofluorobenzene (Surr)	84		15 - 150			08/26/25 09:22	08/26/25 12:40	1

## Method: SW846 8015M/D - Diesel Range Organics (DRO) (GC)

Analyte	Result	Qualifier	RL	Unit	D	Prepared	Analyzed	Dil Fac
Diesel Range Organics [C10-C28]	ND		9.6	mg/Kg		08/26/25 09:17	08/26/25 11:43	1
Motor Oil Range Organics [C28-C40]	ND		48	mg/Kg		08/26/25 09:17	08/26/25 11:43	1
Surrogate	%Recovery	Qualifier	Limits			Prepared	Analyzed	Dil Fac
Di-n-octyl phthalate (Surr)	103		62 - 134			08/26/25 09:17	08/26/25 11:43	1

## Method: EPA 300.0 - Anions, Ion Chromatography

Analyte	Result	Qualifier	RL	Unit	D	Prepared	Analyzed	Dil Fac
Chloride	ND		50	mg/Kg		08/26/25 09:57	08/26/25 12:13	10

Eurofins Albuquerque

## Client Sample Results

Client: Ensolum  
Project/Site: Lateral K-25

Job ID: 885-31785-1

Client Sample ID: S-5

Lab Sample ID: 885-31785-5

Date Collected: 08/25/25 10:25

Matrix: Solid

Date Received: 08/26/25 07:40

## Method: SW846 8015M/D - Gasoline Range Organics (GRO) (GC)

Analyte	Result	Qualifier	RL	Unit	D	Prepared	Analyzed	Dil Fac
Gasoline Range Organics [C6 - C10]	ND		3.5	mg/Kg		08/26/25 09:22	08/26/25 13:03	1
Surrogate	%Recovery	Qualifier	Limits			Prepared	Analyzed	Dil Fac
4-Bromofluorobenzene (Surr)	90		15 - 150			08/26/25 09:22	08/26/25 13:03	1

## Method: SW846 8021B - Volatile Organic Compounds (GC)

Analyte	Result	Qualifier	RL	Unit	D	Prepared	Analyzed	Dil Fac
Benzene	ND		0.018	mg/Kg		08/26/25 09:22	08/26/25 13:03	1
Ethylbenzene	ND		0.035	mg/Kg		08/26/25 09:22	08/26/25 13:03	1
Toluene	ND		0.035	mg/Kg		08/26/25 09:22	08/26/25 13:03	1
Xylenes, Total	ND		0.071	mg/Kg		08/26/25 09:22	08/26/25 13:03	1
Surrogate	%Recovery	Qualifier	Limits			Prepared	Analyzed	Dil Fac
4-Bromofluorobenzene (Surr)	84		15 - 150			08/26/25 09:22	08/26/25 13:03	1

## Method: SW846 8015M/D - Diesel Range Organics (DRO) (GC)

Analyte	Result	Qualifier	RL	Unit	D	Prepared	Analyzed	Dil Fac
Diesel Range Organics [C10-C28]	ND		9.7	mg/Kg		08/26/25 09:17	08/26/25 10:43	1
Motor Oil Range Organics [C28-C40]	ND		49	mg/Kg		08/26/25 09:17	08/26/25 10:43	1
Surrogate	%Recovery	Qualifier	Limits			Prepared	Analyzed	Dil Fac
Di-n-octyl phthalate (Surr)	100		62 - 134			08/26/25 09:17	08/26/25 10:43	1

## Method: EPA 300.0 - Anions, Ion Chromatography

Analyte	Result	Qualifier	RL	Unit	D	Prepared	Analyzed	Dil Fac
Chloride	ND		50	mg/Kg		08/26/25 09:57	08/26/25 12:22	10

Eurofins Albuquerque



## Client Sample Results

Client: Ensolum  
Project/Site: Lateral K-25

Job ID: 885-31785-1

Client Sample ID: S-6

Lab Sample ID: 885-31785-6

Date Collected: 08/25/25 10:30

Matrix: Solid

Date Received: 08/26/25 07:40

## Method: SW846 8015M/D - Gasoline Range Organics (GRO) (GC)

Analyte	Result	Qualifier	RL	Unit	D	Prepared	Analyzed	Dil Fac
Gasoline Range Organics [C6 - C10]	ND		6.3	mg/Kg		08/26/25 09:22	08/26/25 13:27	1
Surrogate	%Recovery	Qualifier	Limits			Prepared	Analyzed	Dil Fac
4-Bromofluorobenzene (Surr)	92		15 - 150			08/26/25 09:22	08/26/25 13:27	1

## Method: SW846 8021B - Volatile Organic Compounds (GC)

Analyte	Result	Qualifier	RL	Unit	D	Prepared	Analyzed	Dil Fac
Benzene	ND		0.032	mg/Kg		08/26/25 09:22	08/26/25 13:27	1
Ethylbenzene	ND		0.063	mg/Kg		08/26/25 09:22	08/26/25 13:27	1
Toluene	ND		0.063	mg/Kg		08/26/25 09:22	08/26/25 13:27	1
Xylenes, Total	ND		0.13	mg/Kg		08/26/25 09:22	08/26/25 13:27	1
Surrogate	%Recovery	Qualifier	Limits			Prepared	Analyzed	Dil Fac
4-Bromofluorobenzene (Surr)	86		15 - 150			08/26/25 09:22	08/26/25 13:27	1

## Method: SW846 8015M/D - Diesel Range Organics (DRO) (GC)

Analyte	Result	Qualifier	RL	Unit	D	Prepared	Analyzed	Dil Fac
Diesel Range Organics [C10-C28]	12		9.9	mg/Kg		08/26/25 09:17	08/26/25 10:54	1
Motor Oil Range Organics [C28-C40]	ND		50	mg/Kg		08/26/25 09:17	08/26/25 10:54	1
Surrogate	%Recovery	Qualifier	Limits			Prepared	Analyzed	Dil Fac
Di-n-octyl phthalate (Surr)	103		62 - 134			08/26/25 09:17	08/26/25 10:54	1

## Method: EPA 300.0 - Anions, Ion Chromatography

Analyte	Result	Qualifier	RL	Unit	D	Prepared	Analyzed	Dil Fac
Chloride	ND		50	mg/Kg		08/26/25 09:57	08/26/25 12:32	10

Eurofins Albuquerque

## Client Sample Results

Client: Ensolum  
Project/Site: Lateral K-25

Job ID: 885-31785-1

Client Sample ID: BF-1

Lab Sample ID: 885-31785-7

Date Collected: 08/25/25 10:35

Matrix: Solid

Date Received: 08/26/25 07:40

## Method: SW846 8015M/D - Gasoline Range Organics (GRO) (GC)

Analyte	Result	Qualifier	RL	Unit	D	Prepared	Analyzed	Dil Fac
Gasoline Range Organics [C6 - C10]	ND		3.6	mg/Kg		08/26/25 09:22	08/26/25 13:50	1
Surrogate	%Recovery	Qualifier	Limits			Prepared	Analyzed	Dil Fac
4-Bromofluorobenzene (Surr)	90		15 - 150			08/26/25 09:22	08/26/25 13:50	1

## Method: SW846 8021B - Volatile Organic Compounds (GC)

Analyte	Result	Qualifier	RL	Unit	D	Prepared	Analyzed	Dil Fac
Benzene	ND		0.018	mg/Kg		08/26/25 09:22	08/26/25 13:50	1
Ethylbenzene	ND		0.036	mg/Kg		08/26/25 09:22	08/26/25 13:50	1
Toluene	ND		0.036	mg/Kg		08/26/25 09:22	08/26/25 13:50	1
Xylenes, Total	ND		0.072	mg/Kg		08/26/25 09:22	08/26/25 13:50	1
Surrogate	%Recovery	Qualifier	Limits			Prepared	Analyzed	Dil Fac
4-Bromofluorobenzene (Surr)	86		15 - 150			08/26/25 09:22	08/26/25 13:50	1

## Method: SW846 8015M/D - Diesel Range Organics (DRO) (GC)

Analyte	Result	Qualifier	RL	Unit	D	Prepared	Analyzed	Dil Fac
Diesel Range Organics [C10-C28]	ND		9.7	mg/Kg		08/26/25 09:17	08/26/25 11:05	1
Motor Oil Range Organics [C28-C40]	ND		48	mg/Kg		08/26/25 09:17	08/26/25 11:05	1
Surrogate	%Recovery	Qualifier	Limits			Prepared	Analyzed	Dil Fac
Di-n-octyl phthalate (Surr)	99		62 - 134			08/26/25 09:17	08/26/25 11:05	1

## Method: EPA 300.0 - Anions, Ion Chromatography

Analyte	Result	Qualifier	RL	Unit	D	Prepared	Analyzed	Dil Fac
Chloride	ND		50	mg/Kg		08/26/25 09:57	08/26/25 12:42	10

Eurofins Albuquerque

## QC Sample Results

Client: Ensolum  
Project/Site: Lateral K-25

Job ID: 885-31785-1

## Method: 8015M/D - Gasoline Range Organics (GRO) (GC)

Lab Sample ID: MB 885-33200/1-A

Matrix: Solid

Analysis Batch: 33209

Client Sample ID: Method Blank

Prep Type: Total/NA

Prep Batch: 33200

Analyte	MB Result	MB Qualifier	RL	Unit	D	Prepared	Analyzed	Dil Fac
Gasoline Range Organics [C6 - C10]	ND		5.0	mg/Kg		08/26/25 09:22	08/26/25 11:05	1
Surrogate	MB %Recovery	MB Qualifier	Limits			Prepared	Analyzed	Dil Fac
4-Bromofluorobenzene (Surr)	88		15 - 150			08/26/25 09:22	08/26/25 11:05	1

Lab Sample ID: LCS 885-33200/2-A

Matrix: Solid

Analysis Batch: 33209

Client Sample ID: Lab Control Sample

Prep Type: Total/NA

Prep Batch: 33200

Analyte	Spike Added	LCS Result	LCS Qualifier	Unit	D	%Rec	%Rec Limits
Gasoline Range Organics [C6 - C10]	25.0	20.9		mg/Kg		84	70 - 130
Surrogate	LCS %Recovery	LCS Qualifier	Limits				
4-Bromofluorobenzene (Surr)	175		15 - 150				

Lab Sample ID: 885-31785-1 MS

Matrix: Solid

Analysis Batch: 33209

Client Sample ID: S-1

Prep Type: Total/NA

Prep Batch: 33200

Analyte	Sample Result	Sample Qualifier	Spike Added	MS Result	MS Qualifier	Unit	D	%Rec	%Rec Limits
Gasoline Range Organics [C6 - C10]	ND		19.2	17.2		mg/Kg		90	70 - 130
Surrogate	MS %Recovery	MS Qualifier	Limits						
4-Bromofluorobenzene (Surr)	180		15 - 150						

Lab Sample ID: 885-31785-1 MSD

Matrix: Solid

Analysis Batch: 33209

Client Sample ID: S-1

Prep Type: Total/NA

Prep Batch: 33200

Analyte	Sample Result	Sample Qualifier	Spike Added	MSD Result	MSD Qualifier	Unit	D	%Rec	%Rec Limits	RPD	RPD Limit
Gasoline Range Organics [C6 - C10]	ND		19.2	16.3		mg/Kg		85	70 - 130	6	20
Surrogate	MSD %Recovery	MSD Qualifier	Limits								
4-Bromofluorobenzene (Surr)	185		15 - 150								

## Method: 8021B - Volatile Organic Compounds (GC)

Lab Sample ID: MB 885-33200/1-A

Matrix: Solid

Analysis Batch: 33210

Client Sample ID: Method Blank

Prep Type: Total/NA

Prep Batch: 33200

Analyte	MB Result	MB Qualifier	RL	Unit	D	Prepared	Analyzed	Dil Fac
Benzene	ND		0.025	mg/Kg		08/26/25 09:22	08/26/25 11:05	1
Ethylbenzene	ND		0.050	mg/Kg		08/26/25 09:22	08/26/25 11:05	1
Toluene	ND		0.050	mg/Kg		08/26/25 09:22	08/26/25 11:05	1

Eurofins Albuquerque

## QC Sample Results

Client: Ensolum  
Project/Site: Lateral K-25

Job ID: 885-31785-1

## Method: 8021B - Volatile Organic Compounds (GC) (Continued)

Lab Sample ID: MB 885-33200/1-A

Matrix: Solid

Analysis Batch: 33210

Client Sample ID: Method Blank

Prep Type: Total/NA

Prep Batch: 33200

Analyte	MB Result	MB Qualifier	RL	Unit	D	Prepared	Analyzed	Dil Fac
Xylenes, Total	ND		0.10	mg/Kg		08/26/25 09:22	08/26/25 11:05	1

Surrogate	MB %Recovery	MB Qualifier	Limits	Prepared	Analyzed	Dil Fac
4-Bromofluorobenzene (Surr)	84		15 - 150	08/26/25 09:22	08/26/25 11:05	1

Lab Sample ID: LCS 885-33200/3-A

Matrix: Solid

Analysis Batch: 33210

Client Sample ID: Lab Control Sample

Prep Type: Total/NA

Prep Batch: 33200

Analyte	Spike Added	LCS Result	LCS Qualifier	Unit	D	%Rec	%Rec Limits
Benzene	1.00	0.859		mg/Kg		86	70 - 130
Ethylbenzene	1.00	0.830		mg/Kg		83	70 - 130
Toluene	1.00	0.855		mg/Kg		85	70 - 130
Xylenes, Total	3.00	2.59		mg/Kg		86	70 - 130

Surrogate	LCS %Recovery	LCS Qualifier	Limits
4-Bromofluorobenzene (Surr)	82		15 - 150

Lab Sample ID: 885-31785-2 MS

Matrix: Solid

Analysis Batch: 33210

Client Sample ID: S-2

Prep Type: Total/NA

Prep Batch: 33200

Analyte	Sample Result	Sample Qualifier	Spike Added	MS Result	MS Qualifier	Unit	D	%Rec	%Rec Limits
Benzene	ND		0.744	0.640		mg/Kg		86	70 - 130
Ethylbenzene	ND		0.744	0.629		mg/Kg		85	70 - 130
Toluene	ND		0.744	0.628		mg/Kg		84	70 - 130
Xylenes, Total	ND		2.23	1.95		mg/Kg		87	70 - 130

Surrogate	MS %Recovery	MS Qualifier	Limits
4-Bromofluorobenzene (Surr)	89		15 - 150

Lab Sample ID: 885-31785-2 MSD

Matrix: Solid

Analysis Batch: 33210

Client Sample ID: S-2

Prep Type: Total/NA

Prep Batch: 33200

Analyte	Sample Result	Sample Qualifier	Spike Added	MSD Result	MSD Qualifier	Unit	D	%Rec	%Rec Limits	RPD	Limit
Benzene	ND		0.744	0.657		mg/Kg		88	70 - 130	3	20
Ethylbenzene	ND		0.744	0.640		mg/Kg		86	70 - 130	2	20
Toluene	ND		0.744	0.651		mg/Kg		87	70 - 130	4	20
Xylenes, Total	ND		2.23	2.01		mg/Kg		90	70 - 130	3	20

Surrogate	MSD %Recovery	MSD Qualifier	Limits
4-Bromofluorobenzene (Surr)	91		15 - 150

Eurofins Albuquerque

## QC Sample Results

Client: Ensolum  
Project/Site: Lateral K-25

Job ID: 885-31785-1

## Method: 8015M/D - Diesel Range Organics (DRO) (GC)

Lab Sample ID: MB 885-33198/1-A

Matrix: Solid

Analysis Batch: 33187

Client Sample ID: Method Blank

Prep Type: Total/NA

Prep Batch: 33198

Analyte	MB Result	MB Qualifier	RL	Unit	D	Prepared	Analyzed	Dil Fac
Diesel Range Organics [C10-C28]	ND		10	mg/Kg		08/26/25 09:17	08/26/25 10:43	1
Motor Oil Range Organics [C28-C40]	ND		50	mg/Kg		08/26/25 09:17	08/26/25 10:43	1
Surrogate	MB %Recovery	MB Qualifier	Limits			Prepared	Analyzed	Dil Fac
Di-n-octyl phthalate (Surr)	97		62 - 134			08/26/25 09:17	08/26/25 10:43	1

Lab Sample ID: LCS 885-33198/2-A

Matrix: Solid

Analysis Batch: 33187

Client Sample ID: Lab Control Sample

Prep Type: Total/NA

Prep Batch: 33198

Analyte	Spike Added	LCS Result	LCS Qualifier	Unit	D	%Rec	%Rec Limits
Diesel Range Organics [C10-C28]	50.0	43.7		mg/Kg		87	51 - 148
Surrogate	LCS %Recovery	LCS Qualifier	Limits				
Di-n-octyl phthalate (Surr)	93		62 - 134				

Lab Sample ID: 885-31785-7 MS

Matrix: Solid

Analysis Batch: 33194

Client Sample ID: BF-1

Prep Type: Total/NA

Prep Batch: 33198

Analyte	Sample Result	Sample Qualifier	Spike Added	MS Result	MS Qualifier	Unit	D	%Rec	%Rec Limits
Diesel Range Organics [C10-C28]	ND		47.2	44.8		mg/Kg		95	44 - 136
Surrogate	MS %Recovery	MS Qualifier	Limits						
Di-n-octyl phthalate (Surr)	102		62 - 134						

Lab Sample ID: 885-31785-7 MSD

Matrix: Solid

Analysis Batch: 33194

Client Sample ID: BF-1

Prep Type: Total/NA

Prep Batch: 33198

Analyte	Sample Result	Sample Qualifier	Spike Added	MSD Result	MSD Qualifier	Unit	D	%Rec	%Rec Limits	RPD	RPD Limit
Diesel Range Organics [C10-C28]	ND		45.9	44.3		mg/Kg		97	44 - 136	1	32
Surrogate	MSD %Recovery	MSD Qualifier	Limits								
Di-n-octyl phthalate (Surr)	99		62 - 134								

## Method: 300.0 - Anions, Ion Chromatography

Lab Sample ID: MB 885-33214/1-A

Matrix: Solid

Analysis Batch: 33192

Client Sample ID: Method Blank

Prep Type: Total/NA

Prep Batch: 33214

Analyte	MB Result	MB Qualifier	RL	Unit	D	Prepared	Analyzed	Dil Fac
Chloride	ND		5.0	mg/Kg		08/26/25 09:57	08/26/25 10:57	1

Eurofins Albuquerque

QC Sample Results

Client: Ensolum  
Project/Site: Lateral K-25

Job ID: 885-31785-1

Method: 300.0 - Anions, Ion Chromatography (Continued)

Lab Sample ID: LCS 885-33214/2-A				Client Sample ID: Lab Control Sample			
Matrix: Solid				Prep Type: Total/NA			
Analysis Batch: 33192				Prep Batch: 33214			
Analyte	Spike Added	LCS Result	LCS Qualifier	Unit	D	%Rec	%Rec Limits
Chloride	49.7	48.2		mg/Kg		97	90 - 110

- 1
- 2
- 3
- 4
- 5
- 6
- 7
- 8
- 9
- 10
- 11

## QC Association Summary

Client: Ensolum  
Project/Site: Lateral K-25

Job ID: 885-31785-1

## GC VOA

## Prep Batch: 33200

Lab Sample ID	Client Sample ID	Prep Type	Matrix	Method	Prep Batch
885-31785-1	S-1	Total/NA	Solid	5035	
885-31785-2	S-2	Total/NA	Solid	5035	
885-31785-3	S-3	Total/NA	Solid	5035	
885-31785-4	S-4	Total/NA	Solid	5035	
885-31785-5	S-5	Total/NA	Solid	5035	
885-31785-6	S-6	Total/NA	Solid	5035	
885-31785-7	BF-1	Total/NA	Solid	5035	
MB 885-33200/1-A	Method Blank	Total/NA	Solid	5035	
LCS 885-33200/2-A	Lab Control Sample	Total/NA	Solid	5035	
LCS 885-33200/3-A	Lab Control Sample	Total/NA	Solid	5035	
885-31785-1 MS	S-1	Total/NA	Solid	5035	
885-31785-1 MSD	S-1	Total/NA	Solid	5035	
885-31785-2 MS	S-2	Total/NA	Solid	5035	
885-31785-2 MSD	S-2	Total/NA	Solid	5035	

## Analysis Batch: 33209

Lab Sample ID	Client Sample ID	Prep Type	Matrix	Method	Prep Batch
885-31785-1	S-1	Total/NA	Solid	8015M/D	33200
885-31785-2	S-2	Total/NA	Solid	8015M/D	33200
885-31785-3	S-3	Total/NA	Solid	8015M/D	33200
885-31785-4	S-4	Total/NA	Solid	8015M/D	33200
885-31785-5	S-5	Total/NA	Solid	8015M/D	33200
885-31785-6	S-6	Total/NA	Solid	8015M/D	33200
885-31785-7	BF-1	Total/NA	Solid	8015M/D	33200
MB 885-33200/1-A	Method Blank	Total/NA	Solid	8015M/D	33200
LCS 885-33200/2-A	Lab Control Sample	Total/NA	Solid	8015M/D	33200
885-31785-1 MS	S-1	Total/NA	Solid	8015M/D	33200
885-31785-1 MSD	S-1	Total/NA	Solid	8015M/D	33200

## Analysis Batch: 33210

Lab Sample ID	Client Sample ID	Prep Type	Matrix	Method	Prep Batch
885-31785-1	S-1	Total/NA	Solid	8021B	33200
885-31785-2	S-2	Total/NA	Solid	8021B	33200
885-31785-3	S-3	Total/NA	Solid	8021B	33200
885-31785-4	S-4	Total/NA	Solid	8021B	33200
885-31785-5	S-5	Total/NA	Solid	8021B	33200
885-31785-6	S-6	Total/NA	Solid	8021B	33200
885-31785-7	BF-1	Total/NA	Solid	8021B	33200
MB 885-33200/1-A	Method Blank	Total/NA	Solid	8021B	33200
LCS 885-33200/3-A	Lab Control Sample	Total/NA	Solid	8021B	33200
885-31785-2 MS	S-2	Total/NA	Solid	8021B	33200
885-31785-2 MSD	S-2	Total/NA	Solid	8021B	33200

## GC Semi VOA

## Analysis Batch: 33187

Lab Sample ID	Client Sample ID	Prep Type	Matrix	Method	Prep Batch
885-31785-1	S-1	Total/NA	Solid	8015M/D	33198
885-31785-2	S-2	Total/NA	Solid	8015M/D	33198
885-31785-3	S-3	Total/NA	Solid	8015M/D	33198
885-31785-4	S-4	Total/NA	Solid	8015M/D	33198

Eurofins Albuquerque



## QC Association Summary

Client: Ensolum  
Project/Site: Lateral K-25

Job ID: 885-31785-1

## GC Semi VOA (Continued)

## Analysis Batch: 33187 (Continued)

Lab Sample ID	Client Sample ID	Prep Type	Matrix	Method	Prep Batch
MB 885-33198/1-A	Method Blank	Total/NA	Solid	8015M/D	33198
LCS 885-33198/2-A	Lab Control Sample	Total/NA	Solid	8015M/D	33198

## Analysis Batch: 33194

Lab Sample ID	Client Sample ID	Prep Type	Matrix	Method	Prep Batch
885-31785-5	S-5	Total/NA	Solid	8015M/D	33198
885-31785-6	S-6	Total/NA	Solid	8015M/D	33198
885-31785-7	BF-1	Total/NA	Solid	8015M/D	33198
885-31785-7 MS	BF-1	Total/NA	Solid	8015M/D	33198
885-31785-7 MSD	BF-1	Total/NA	Solid	8015M/D	33198

## Prep Batch: 33198

Lab Sample ID	Client Sample ID	Prep Type	Matrix	Method	Prep Batch
885-31785-1	S-1	Total/NA	Solid	SHAKE	
885-31785-2	S-2	Total/NA	Solid	SHAKE	
885-31785-3	S-3	Total/NA	Solid	SHAKE	
885-31785-4	S-4	Total/NA	Solid	SHAKE	
885-31785-5	S-5	Total/NA	Solid	SHAKE	
885-31785-6	S-6	Total/NA	Solid	SHAKE	
885-31785-7	BF-1	Total/NA	Solid	SHAKE	
MB 885-33198/1-A	Method Blank	Total/NA	Solid	SHAKE	
LCS 885-33198/2-A	Lab Control Sample	Total/NA	Solid	SHAKE	
885-31785-7 MS	BF-1	Total/NA	Solid	SHAKE	
885-31785-7 MSD	BF-1	Total/NA	Solid	SHAKE	

## HPLC/IC

## Analysis Batch: 33192

Lab Sample ID	Client Sample ID	Prep Type	Matrix	Method	Prep Batch
885-31785-1	S-1	Total/NA	Solid	300.0	33214
885-31785-2	S-2	Total/NA	Solid	300.0	33214
885-31785-3	S-3	Total/NA	Solid	300.0	33214
885-31785-4	S-4	Total/NA	Solid	300.0	33214
885-31785-5	S-5	Total/NA	Solid	300.0	33214
885-31785-6	S-6	Total/NA	Solid	300.0	33214
885-31785-7	BF-1	Total/NA	Solid	300.0	33214
MB 885-33214/1-A	Method Blank	Total/NA	Solid	300.0	33214
LCS 885-33214/2-A	Lab Control Sample	Total/NA	Solid	300.0	33214

## Prep Batch: 33214

Lab Sample ID	Client Sample ID	Prep Type	Matrix	Method	Prep Batch
885-31785-1	S-1	Total/NA	Solid	300_Prep	
885-31785-2	S-2	Total/NA	Solid	300_Prep	
885-31785-3	S-3	Total/NA	Solid	300_Prep	
885-31785-4	S-4	Total/NA	Solid	300_Prep	
885-31785-5	S-5	Total/NA	Solid	300_Prep	
885-31785-6	S-6	Total/NA	Solid	300_Prep	
885-31785-7	BF-1	Total/NA	Solid	300_Prep	
MB 885-33214/1-A	Method Blank	Total/NA	Solid	300_Prep	
LCS 885-33214/2-A	Lab Control Sample	Total/NA	Solid	300_Prep	

Eurofins Albuquerque

## Lab Chronicle

Client: Ensolum  
Project/Site: Lateral K-25

Job ID: 885-31785-1

## Client Sample ID: S-1

## Lab Sample ID: 885-31785-1

Date Collected: 08/25/25 10:00

Matrix: Solid

Date Received: 08/26/25 07:40

Prep Type	Batch Type	Batch Method	Run	Dilution Factor	Batch Number	Analyst	Lab	Prepared or Analyzed
Total/NA	Prep	5035			33200	KLS	EET ALB	08/26/25 09:22
Total/NA	Analysis	8015M/D		1	33209	JP	EET ALB	08/26/25 11:29
Total/NA	Prep	5035			33200	KLS	EET ALB	08/26/25 09:22
Total/NA	Analysis	8021B		1	33210	JP	EET ALB	08/26/25 11:29
Total/NA	Prep	SHAKE			33198	EM	EET ALB	08/26/25 09:17
Total/NA	Analysis	8015M/D		1	33187	EM	EET ALB	08/26/25 11:07
Total/NA	Prep	300_Prep			33214	RC	EET ALB	08/26/25 09:57
Total/NA	Analysis	300.0		10	33192	RC	EET ALB	08/26/25 11:43

## Client Sample ID: S-2

## Lab Sample ID: 885-31785-2

Date Collected: 08/25/25 10:05

Matrix: Solid

Date Received: 08/26/25 07:40

Prep Type	Batch Type	Batch Method	Run	Dilution Factor	Batch Number	Analyst	Lab	Prepared or Analyzed
Total/NA	Prep	5035			33200	KLS	EET ALB	08/26/25 09:22
Total/NA	Analysis	8015M/D		1	33209	JP	EET ALB	08/26/25 11:52
Total/NA	Prep	5035			33200	KLS	EET ALB	08/26/25 09:22
Total/NA	Analysis	8021B		1	33210	JP	EET ALB	08/26/25 11:52
Total/NA	Prep	SHAKE			33198	EM	EET ALB	08/26/25 09:17
Total/NA	Analysis	8015M/D		1	33187	EM	EET ALB	08/26/25 11:19
Total/NA	Prep	300_Prep			33214	RC	EET ALB	08/26/25 09:57
Total/NA	Analysis	300.0		10	33192	RC	EET ALB	08/26/25 11:53

## Client Sample ID: S-3

## Lab Sample ID: 885-31785-3

Date Collected: 08/25/25 10:15

Matrix: Solid

Date Received: 08/26/25 07:40

Prep Type	Batch Type	Batch Method	Run	Dilution Factor	Batch Number	Analyst	Lab	Prepared or Analyzed
Total/NA	Prep	5035			33200	KLS	EET ALB	08/26/25 09:22
Total/NA	Analysis	8015M/D		1	33209	JP	EET ALB	08/26/25 12:16
Total/NA	Prep	5035			33200	KLS	EET ALB	08/26/25 09:22
Total/NA	Analysis	8021B		1	33210	JP	EET ALB	08/26/25 12:16
Total/NA	Prep	SHAKE			33198	EM	EET ALB	08/26/25 09:17
Total/NA	Analysis	8015M/D		1	33187	EM	EET ALB	08/26/25 11:31
Total/NA	Prep	300_Prep			33214	RC	EET ALB	08/26/25 09:57
Total/NA	Analysis	300.0		10	33192	RC	EET ALB	08/26/25 12:03

## Client Sample ID: S-4

## Lab Sample ID: 885-31785-4

Date Collected: 08/25/25 10:20

Matrix: Solid

Date Received: 08/26/25 07:40

Prep Type	Batch Type	Batch Method	Run	Dilution Factor	Batch Number	Analyst	Lab	Prepared or Analyzed
Total/NA	Prep	5035			33200	KLS	EET ALB	08/26/25 09:22
Total/NA	Analysis	8015M/D		1	33209	JP	EET ALB	08/26/25 12:40

Eurofins Albuquerque

## Lab Chronicle

Client: Ensolum  
Project/Site: Lateral K-25

Job ID: 885-31785-1

## Client Sample ID: S-4

## Lab Sample ID: 885-31785-4

Date Collected: 08/25/25 10:20

Matrix: Solid

Date Received: 08/26/25 07:40

Prep Type	Batch Type	Batch Method	Run	Dilution Factor	Batch Number	Analyst	Lab	Prepared or Analyzed
Total/NA	Prep	5035			33200	KLS	EET ALB	08/26/25 09:22
Total/NA	Analysis	8021B		1	33210	JP	EET ALB	08/26/25 12:40
Total/NA	Prep	SHAKE			33198	EM	EET ALB	08/26/25 09:17
Total/NA	Analysis	8015M/D		1	33187	EM	EET ALB	08/26/25 11:43
Total/NA	Prep	300_Prep			33214	RC	EET ALB	08/26/25 09:57
Total/NA	Analysis	300.0		10	33192	RC	EET ALB	08/26/25 12:13

## Client Sample ID: S-5

## Lab Sample ID: 885-31785-5

Date Collected: 08/25/25 10:25

Matrix: Solid

Date Received: 08/26/25 07:40

Prep Type	Batch Type	Batch Method	Run	Dilution Factor	Batch Number	Analyst	Lab	Prepared or Analyzed
Total/NA	Prep	5035			33200	KLS	EET ALB	08/26/25 09:22
Total/NA	Analysis	8015M/D		1	33209	JP	EET ALB	08/26/25 13:03
Total/NA	Prep	5035			33200	KLS	EET ALB	08/26/25 09:22
Total/NA	Analysis	8021B		1	33210	JP	EET ALB	08/26/25 13:03
Total/NA	Prep	SHAKE			33198	EM	EET ALB	08/26/25 09:17
Total/NA	Analysis	8015M/D		1	33194	EM	EET ALB	08/26/25 10:43
Total/NA	Prep	300_Prep			33214	RC	EET ALB	08/26/25 09:57
Total/NA	Analysis	300.0		10	33192	RC	EET ALB	08/26/25 12:22

## Client Sample ID: S-6

## Lab Sample ID: 885-31785-6

Date Collected: 08/25/25 10:30

Matrix: Solid

Date Received: 08/26/25 07:40

Prep Type	Batch Type	Batch Method	Run	Dilution Factor	Batch Number	Analyst	Lab	Prepared or Analyzed
Total/NA	Prep	5035			33200	KLS	EET ALB	08/26/25 09:22
Total/NA	Analysis	8015M/D		1	33209	JP	EET ALB	08/26/25 13:27
Total/NA	Prep	5035			33200	KLS	EET ALB	08/26/25 09:22
Total/NA	Analysis	8021B		1	33210	JP	EET ALB	08/26/25 13:27
Total/NA	Prep	SHAKE			33198	EM	EET ALB	08/26/25 09:17
Total/NA	Analysis	8015M/D		1	33194	EM	EET ALB	08/26/25 10:54
Total/NA	Prep	300_Prep			33214	RC	EET ALB	08/26/25 09:57
Total/NA	Analysis	300.0		10	33192	RC	EET ALB	08/26/25 12:32

## Client Sample ID: BF-1

## Lab Sample ID: 885-31785-7

Date Collected: 08/25/25 10:35

Matrix: Solid

Date Received: 08/26/25 07:40

Prep Type	Batch Type	Batch Method	Run	Dilution Factor	Batch Number	Analyst	Lab	Prepared or Analyzed
Total/NA	Prep	5035			33200	KLS	EET ALB	08/26/25 09:22
Total/NA	Analysis	8015M/D		1	33209	JP	EET ALB	08/26/25 13:50
Total/NA	Prep	5035			33200	KLS	EET ALB	08/26/25 09:22
Total/NA	Analysis	8021B		1	33210	JP	EET ALB	08/26/25 13:50

Eurofins Albuquerque

Lab Chronicle

Client: Ensolum  
Project/Site: Lateral K-25

Job ID: 885-31785-1

**Client Sample ID: BF-1**  
**Date Collected: 08/25/25 10:35**  
**Date Received: 08/26/25 07:40**

**Lab Sample ID: 885-31785-7**  
**Matrix: Solid**

Prep Type	Batch Type	Batch Method	Run	Dilution Factor	Batch Number	Analyst	Lab	Prepared or Analyzed
Total/NA	Prep	SHAKE			33198	EM	EET ALB	08/26/25 09:17
Total/NA	Analysis	8015M/D		1	33194	EM	EET ALB	08/26/25 11:05
Total/NA	Prep	300_Prep			33214	RC	EET ALB	08/26/25 09:57
Total/NA	Analysis	300.0		10	33192	RC	EET ALB	08/26/25 12:42

**Laboratory References:**  
EET ALB = Eurofins Albuquerque, 4901 Hawkins NE, Albuquerque, NM 87109, TEL (505)345-3975

- 1
- 2
- 3
- 4
- 5
- 6
- 7
- 8
- 9
- 10
- 11

Accreditation/Certification Summary

Client: Ensolum  
Project/Site: Lateral K-25

Job ID: 885-31785-1

Laboratory: Eurofins Albuquerque

The accreditations/certifications listed below are applicable to this report.

Authority	Program	Identification Number	Expiration Date
Oregon	NELAP	NM100001	02-26-26

- 1
- 2
- 3
- 4
- 5
- 6
- 7
- 8
- 9
- 10
- 11



# HALL ENVIRONMENTAL ANALYSIS LABORATORY

[www.hallenvironmental.com](http://www.hallenvironmental.com)

4901 Hawkins NE - Albuquerque, NM 87109

Tel. 505-345-3975 Fax 505-345-4107



885-31785 COC

## Chain-of-Custody Record

Chain-of-Custody Record													
Client: <u>Ensaem</u>		Turn-Around Time: <u>1 hr</u>		<input type="checkbox"/> Standard <input checked="" type="checkbox"/> Rush		<u>8-26-25</u>							
Mailing Address: <u>606 S R.O Grande</u>		Project Name: <u>Latral K-25</u>											
Phone #: <u>874100</u>		Project #: <u></u>											
email or Fax#: <u>cdapenti</u>		Project Manager: <u>K. Supporet</u>											
QA/QC Package: <input type="checkbox"/> Standard <input type="checkbox"/> Level 4 (Full Validation)		Sampler: <u>CDAPenti</u>											
Accreditation: <input type="checkbox"/> Az Compliance <input type="checkbox"/> NELAC <input type="checkbox"/> Other <u></u>		On Ice: <input checked="" type="checkbox"/> Yes <input type="checkbox"/> No <u>ADD</u>											
<input type="checkbox"/> EDD (Type) <u></u>		# of Coolers: <u>1</u>											
		Cooler Temp (including CF): <u>43-02.4.1</u>				(°C)							
Date		Time		Matrix		Sample Name		Container Type and #		Preservative Type		HEAL No.	
8/25		1000		S		S-1		1402		1401			
8/25		1005		S		S-2							
8/25		1015		S		S-3							
8/25		1020		S		S-4							
8/25		1035		S		S-5							
8/25		1030		S		S-6							
8/25		1035		S		BF-1							
Date: <u>8/25/25</u>		Time: <u>1300</u>		Relinquished by: <u>[Signature]</u>		Via: <u>Curves</u>		Date: <u>8/25/25</u>		Time: <u>1300</u>			
Date: <u>8/25/25</u>		Time: <u>1400</u>		Relinquished by: <u>[Signature]</u>		Via: <u>Curves</u>		Date: <u>8/25/25</u>		Time: <u>1400</u>			

If necessary, samples submitted to Hall Environmental may be subcontracted to other accredited laboratories. This serves as notice of this possibility. Any sub-contracted data will be clearly notated on the analytical report.

## Login Sample Receipt Checklist

Client: Ensolum

Job Number: 885-31785-1

Login Number: 31785

List Number: 1

Creator: Casarrubias, Tracy

List Source: Eurofins Albuquerque

Question	Answer	Comment
The cooler's custody seal, if present, is intact.	True	
Sample custody seals, if present, are intact.	True	
The cooler or samples do not appear to have been compromised or tampered with.	True	
Samples were received on ice.	True	
Cooler Temperature is acceptable.	True	
Cooler Temperature is recorded.	True	
COC is present.	True	
COC is filled out in ink and legible.	True	
COC is filled out with all pertinent information.	True	
Is the Field Sampler's name present on COC?	True	
There are no discrepancies between the containers received and the COC.	True	
Samples are received within Holding Time (excluding tests with immediate HTs)	True	
Sample containers have legible labels.	True	
Containers are not broken or leaking.	True	
Sample collection date/times are provided.	True	
Appropriate sample containers are used.	True	
Sample bottles are completely filled.	True	
Sample Preservation Verified.	N/A	
There is sufficient vol. for all requested analyses, incl. any requested MS/MSDs	True	
Containers requiring zero headspace have no headspace or bubble is <6mm (1/4").	True	



Sante Fe Main Office  
Phone: (505) 476-3441

General Information  
Phone: (505) 629-6116

Online Phone Directory  
<https://www.emnrd.nm.gov/ocd/contact-us>

**State of New Mexico**  
**Energy, Minerals and Natural Resources**  
**Oil Conservation Division**  
**1220 S. St Francis Dr.**  
**Santa Fe, NM 87505**

QUESTIONS

Action 528323

**QUESTIONS**

Operator: Enterprise Field Services, LLC PO Box 4324 Houston, TX 77210	OGRID: 241602
	Action Number: 528323
	Action Type: [C-141] Reclamation Report C-141 (C-141-v-Reclamation)

**QUESTIONS**

Prerequisites	
Incident ID (n#)	nAPP2523233981
Incident Name	NAPP2523233981 LATERAL K-25 @ F-33-27N-07W
Incident Type	Natural Gas Release
Incident Status	Reclamation Report Received

**Location of Release Source***Please answer all the questions in this group.*

Site Name	Lateral K-25
Date Release Discovered	08/19/2025
Surface Owner	Federal

**Incident Details***Please answer all the questions in this group.*

Incident Type	Natural Gas Release
Did this release result in a fire or is the result of a fire	No
Did this release result in any injuries	No
Has this release reached or does it have a reasonable probability of reaching a watercourse	No
Has this release endangered or does it have a reasonable probability of endangering public health	No
Has this release substantially damaged or will it substantially damage property or the environment	No
Is this release of a volume that is or may with reasonable probability be detrimental to fresh water	No

**Nature and Volume of Release***Material(s) released, please answer all that apply below. Any calculations or specific justifications for the volumes provided should be attached to the follow-up C-141 submission.*

Crude Oil Released (bbls) Details	Not answered.
Produced Water Released (bbls) Details	Not answered.
Is the concentration of chloride in the produced water >10,000 mg/l	No
Condensate Released (bbls) Details	Cause: Corrosion   Pipeline (Any)   Condensate   Released: 5 BBL   Recovered: 0 BBL   Lost: 5 BBL.
Natural Gas Vented (Mcf) Details	Cause: Corrosion   Pipeline (Any)   Natural Gas Vented   Released: 41 MCF   Recovered: 0 MCF   Lost: 41 MCF.
Natural Gas Flared (Mcf) Details	Not answered.
Other Released Details	Not answered.
Are there additional details for the questions above (i.e. any answer containing Other, Specify, Unknown, and/or Fire, or any negative lost amounts)	Not answered.

Sante Fe Main Office  
Phone: (505) 476-3441

General Information  
Phone: (505) 629-6116

Online Phone Directory  
<https://www.emnrd.nm.gov/ocd/contact-us>

**State of New Mexico**  
**Energy, Minerals and Natural Resources**  
**Oil Conservation Division**  
**1220 S. St Francis Dr.**  
**Santa Fe, NM 87505**

QUESTIONS, Page 2

Action 528323

**QUESTIONS (continued)**

Operator: Enterprise Field Services, LLC PO Box 4324 Houston, TX 77210	OGRID: 241602
	Action Number: 528323
	Action Type: [C-141] Reclamation Report C-141 (C-141-v-Reclamation)

**QUESTIONS**

<b>Nature and Volume of Release (continued)</b>	
Is this a gas only submission (i.e. only significant Mcf values reported)	<b>Yes, according to supplied volumes this will be treated as a "gas only" report.</b>
Was this a major release as defined by Subsection A of 19.15.29.7 NMAC	<b>No</b>
Reasons why this would be considered a submission for a notification of a major release	<i>Unavailable.</i>
<i>With the implementation of the 19.15.27 NMAC (05/25/2021), venting and/or flaring of natural gas (i.e. gas only) are to be submitted on the C-129 form.</i>	

**Initial Response**

*The responsible party must undertake the following actions immediately unless they could create a safety hazard that would result in injury.*

The source of the release has been stopped	<b>True</b>
The impacted area has been secured to protect human health and the environment	<b>True</b>
Released materials have been contained via the use of berms or dikes, absorbent pads, or other containment devices	<b>True</b>
All free liquids and recoverable materials have been removed and managed appropriately	<b>True</b>
If all the actions described above have not been undertaken, explain why	<i>Not answered.</i>

*Per Paragraph (4) of Subsection B of 19.15.29.8 NMAC the responsible party may commence remediation immediately after discovery of a release. If remediation has begun, please prepare and attach a narrative of actions to date in the follow-up C-141 submission. If remedial efforts have been successfully completed or if the release occurred within a lined containment area (see Subparagraph (a) of Paragraph (5) of Subsection A of 19.15.29.11 NMAC), please prepare and attach all information needed for closure evaluation in the follow-up C-141 submission.*

I hereby certify that the information given above is true and complete to the best of my knowledge and understand that pursuant to OCD rules and regulations all operators are required to report and/or file certain release notifications and perform corrective actions for releases which may endanger public health or the environment. The acceptance of a C-141 report by the OCD does not relieve the operator of liability should their operations have failed to adequately investigate and remediate contamination that pose a threat to groundwater, surface water, human health or the environment. In addition, OCD acceptance of a C-141 report does not relieve the operator of responsibility for compliance with any other federal, state, or local laws and/or regulations.

I hereby agree and sign off to the above statement	Name: Thomas Long Title: Sr Field Environmental Scientist Email: tjlong@eprod.com Date: 11/20/2025
--	---

Sante Fe Main Office  
Phone: (505) 476-3441

General Information  
Phone: (505) 629-6116

Online Phone Directory  
<https://www.emnrd.nm.gov/ocd/contact-us>

**State of New Mexico**  
**Energy, Minerals and Natural Resources**  
**Oil Conservation Division**  
**1220 S. St Francis Dr.**  
**Santa Fe, NM 87505**

QUESTIONS, Page 3

Action 528323

**QUESTIONS (continued)**

Operator: Enterprise Field Services, LLC PO Box 4324 Houston, TX 77210	OGRID: 241602
	Action Number: 528323
	Action Type: [C-141] Reclamation Report C-141 (C-141-v-Reclamation)

**QUESTIONS****Site Characterization**

Please answer all the questions in this group (only required when seeking remediation plan approval and beyond). This information must be provided to the appropriate district office no later than 90 days after the release discovery date.

What is the shallowest depth to groundwater beneath the area affected by the release in feet below ground surface (ft bgs)	Between 51 and 75 (ft.)
What method was used to determine the depth to ground water	OCD Imaging Records Lookup
Did this release impact groundwater or surface water	No
<b>What is the minimum distance, between the closest lateral extents of the release and the following surface areas:</b>	
A continuously flowing watercourse or any other significant watercourse	Between 1 and 100 (ft.)
Any lakebed, sinkhole, or playa lake (measured from the ordinary high-water mark)	Between ½ and 1 (mi.)
An occupied permanent residence, school, hospital, institution, or church	Between 1 and 5 (mi.)
A spring or a private domestic fresh water well used by less than five households for domestic or stock watering purposes	Between 1 and 5 (mi.)
Any other fresh water well or spring	Between 1 and 5 (mi.)
Incorporated municipal boundaries or a defined municipal fresh water well field	Greater than 5 (mi.)
A wetland	Between ½ and 1 (mi.)
A subsurface mine	Greater than 5 (mi.)
An (non-karst) unstable area	Greater than 5 (mi.)
Categorize the risk of this well / site being in a karst geology	None
A 100-year floodplain	Between 1 and 5 (mi.)
Did the release impact areas not on an exploration, development, production, or storage site	No

**Remediation Plan**

Please answer all the questions that apply or are indicated. This information must be provided to the appropriate district office no later than 90 days after the release discovery date.

Requesting a remediation plan approval with this submission	Yes
<i>Attach a comprehensive report demonstrating the lateral and vertical extents of soil contamination associated with the release have been determined, pursuant to 19.15.29.11 NMAC and 19.15.29.13 NMAC.</i>	
Have the lateral and vertical extents of contamination been fully delineated	Yes
Was this release entirely contained within a lined containment area	No

**Soil Contamination Sampling:** (Provide the highest observable value for each, in milligrams per kilograms.)

Chloride (EPA 300.0 or SM4500 Cl B)	0.1
TPH (GRO+DRO+MRO) (EPA SW-846 Method 8015M)	12
GRO+DRO (EPA SW-846 Method 8015M)	12
BTEX (EPA SW-846 Method 8021B or 8260B)	0.1
Benzene (EPA SW-846 Method 8021B or 8260B)	0.1

Per Subsection B of 19.15.29.11 NMAC unless the site characterization report includes completed efforts at remediation, the report must include a proposed remediation plan in accordance with 19.15.29.12 NMAC, which includes the anticipated timelines for beginning and completing the remediation.

On what estimated date will the remediation commence	08/19/2025
On what date will (or did) the final sampling or liner inspection occur	08/25/2025
On what date will (or was) the remediation complete(d)	08/25/2025
What is the estimated surface area (in square feet) that will be reclaimed	432
What is the estimated volume (in cubic yards) that will be reclaimed	96
What is the estimated surface area (in square feet) that will be remediated	432
What is the estimated volume (in cubic yards) that will be remediated	92

These estimated dates and measurements are recognized to be the best guess or calculation at the time of submission and may (be) change(d) over time as more remediation efforts are completed.

The OCD recognizes that proposed remediation measures may have to be minimally adjusted in accordance with the physical realities encountered during remediation. If the responsible party has any need to significantly deviate from the remediation plan proposed, then it should consult with the division to determine if another remediation plan submission is required.



Sante Fe Main Office  
Phone: (505) 476-3441

General Information  
Phone: (505) 629-6116

Online Phone Directory  
<https://www.emnrd.nm.gov/ocd/contact-us>

**State of New Mexico**  
**Energy, Minerals and Natural Resources**  
**Oil Conservation Division**  
**1220 S. St Francis Dr.**  
**Santa Fe, NM 87505**

QUESTIONS, Page 4

Action 528323

**QUESTIONS (continued)**

Operator: Enterprise Field Services, LLC PO Box 4324 Houston, TX 77210	OGRID: 241602
	Action Number: 528323
	Action Type: [C-141] Reclamation Report C-141 (C-141-v-Reclamation)

**QUESTIONS**

<b>Remediation Plan (continued)</b>	
<i>Please answer all the questions that apply or are indicated. This information must be provided to the appropriate district office no later than 90 days after the release discovery date.</i>	
<b>This remediation will (or is expected to) utilize the following processes to remediate / reduce contaminants:</b>	
<i>(Select all answers below that apply.)</i>	
(Ex Situ) Excavation and <b>off-site</b> disposal (i.e. dig and haul, hydrovac, etc.)	Yes
Which OCD approved facility will be used for <b>off-site</b> disposal	fEEM0112334691 ENVIROTECH LANDFARM #1
<b>OR</b> which OCD approved well (API) will be used for <b>off-site</b> disposal	Not answered.
<b>OR</b> is the <b>off-site</b> disposal site, to be used, out-of-state	Not answered.
<b>OR</b> is the <b>off-site</b> disposal site, to be used, an NMED facility	Not answered.
(Ex Situ) Excavation and <b>on-site</b> remediation (i.e. On-Site Land Farms)	Not answered.
(In Situ) Soil Vapor Extraction	Not answered.
(In Situ) Chemical processing (i.e. Soil Shredding, Potassium Permanganate, etc.)	Not answered.
(In Situ) Biological processing (i.e. Microbes / Fertilizer, etc.)	Not answered.
(In Situ) Physical processing (i.e. Soil Washing, Gypsum, Disking, etc.)	Not answered.
Ground Water Abatement pursuant to 19.15.30 NMAC	Not answered.
OTHER (Non-listed remedial process)	Not answered.
<i>Per Subsection B of 19.15.29.11 NMAC unless the site characterization report includes completed efforts at remediation, the report must include a proposed remediation plan in accordance with 19.15.29.12 NMAC, which includes the anticipated timelines for beginning and completing the remediation.</i>	
I hereby certify that the information given above is true and complete to the best of my knowledge and understand that pursuant to OCD rules and regulations all operators are required to report and/or file certain release notifications and perform corrective actions for releases which may endanger public health or the environment. The acceptance of a C-141 report by the OCD does not relieve the operator of liability should their operations have failed to adequately investigate and remediate contamination that pose a threat to groundwater, surface water, human health or the environment. In addition, OCD acceptance of a C-141 report does not relieve the operator of responsibility for compliance with any other federal, state, or local laws and/or regulations.	
I hereby agree and sign off to the above statement	Name: Thomas Long Title: Sr Field Environmental Scientist Email: tjlong@eprod.com Date: 11/20/2025
<i>The OCD recognizes that proposed remediation measures may have to be minimally adjusted in accordance with the physical realities encountered during remediation. If the responsible party has any need to significantly deviate from the remediation plan proposed, then it should consult with the division to determine if another remediation plan submission is required.</i>	

Sante Fe Main Office  
Phone: (505) 476-3441

General Information  
Phone: (505) 629-6116

Online Phone Directory  
<https://www.emnrd.nm.gov/ocd/contact-us>

State of New Mexico  
Energy, Minerals and Natural Resources  
Oil Conservation Division  
1220 S. St Francis Dr.  
Santa Fe, NM 87505

QUESTIONS, Page 5

Action 528323

QUESTIONS (continued)

Operator: Enterprise Field Services, LLC PO Box 4324 Houston, TX 77210	OGRID: 241602
	Action Number: 528323
	Action Type: [C-141] Reclamation Report C-141 (C-141-v-Reclamation)

QUESTIONS

Deferral Requests Only	
Only answer the questions in this group if seeking a deferral upon approval this submission. Each of the following items must be confirmed as part of any request for deferral of remediation.	
Requesting a deferral of the remediation closure due date with the approval of this submission	No

Sante Fe Main Office  
Phone: (505) 476-3441

General Information  
Phone: (505) 629-6116

Online Phone Directory  
<https://www.emnrd.nm.gov/ocd/contact-us>

**State of New Mexico**  
**Energy, Minerals and Natural Resources**  
**Oil Conservation Division**  
**1220 S. St Francis Dr.**  
**Santa Fe, NM 87505**

QUESTIONS, Page 6

Action 528323

**QUESTIONS (continued)**

Operator: Enterprise Field Services, LLC PO Box 4324 Houston, TX 77210	OGRID: 241602
	Action Number: 528323
	Action Type: [C-141] Reclamation Report C-141 (C-141-v-Reclamation)

**QUESTIONS**

Sampling Event Information	
Last sampling notification (C-141N) recorded	498089
Sampling date pursuant to Subparagraph (a) of Paragraph (1) of Subsection D of 19.15.29.12 NMAC	08/25/2025
What was the (estimated) number of samples that were to be gathered	8
What was the sampling surface area in square feet	200

**Remediation Closure Request**

*Only answer the questions in this group if seeking remediation closure for this release because all remediation steps have been completed.*

Requesting a remediation closure approval with this submission	Yes
Have the lateral and vertical extents of contamination been fully delineated	Yes
Was this release entirely contained within a lined containment area	No
All areas reasonably needed for production or subsequent drilling operations have been stabilized, returned to the sites existing grade, and have a soil cover that prevents ponding of water, minimizing dust and erosion	Yes
What was the total surface area (in square feet) remediated	432
What was the total volume (cubic yards) remediated	96
All areas not reasonably needed for production or subsequent drilling operations have been reclaimed to contain a minimum of four feet of non-waste contain earthen material with concentrations less than 600 mg/kg chlorides, 100 mg/kg TPH, 50 mg/kg BTEX, and 10 mg/kg Benzene	Yes
What was the total surface area (in square feet) reclaimed	432
What was the total volume (in cubic yards) reclaimed	96
Summarize any additional remediation activities not included by answers (above)	None

*The responsible party must attach information demonstrating they have complied with all applicable closure requirements and any conditions or directives of the OCD. This demonstration should be in the form of a comprehensive report (in .pdf format) including a scaled site map, sampling diagrams, relevant field notes, photographs of any excavation prior to backfilling, laboratory data including chain of custody documents of final sampling, and a narrative of the remedial activities. Refer to 19.15.29.12 NMAC.*

I hereby certify that the information given above is true and complete to the best of my knowledge and understand that pursuant to OCD rules and regulations all operators are required to report and/or file certain release notifications and perform corrective actions for releases which may endanger public health or the environment. The acceptance of a C-141 report by the OCD does not relieve the operator of liability should their operations have failed to adequately investigate and remediate contamination that pose a threat to groundwater, surface water, human health or the environment. In addition, OCD acceptance of a C-141 report does not relieve the operator of responsibility for compliance with any other federal, state, or local laws and/or regulations. The responsible party acknowledges they must substantially restore, reclaim, and re-vegetate the impacted surface area to the conditions that existed prior to the release or their final land use in accordance with 19.15.29.13 NMAC including notification to the OCD when reclamation and re-vegetation are complete.

I hereby agree and sign off to the above statement	Name: Thomas Long Title: Sr Field Environmental Scientist Email: tjlong@eprod.com Date: 11/20/2025
--	---



Sante Fe Main Office  
Phone: (505) 476-3441

General Information  
Phone: (505) 629-6116

Online Phone Directory  
<https://www.emnrd.nm.gov/ocd/contact-us>

**State of New Mexico**  
**Energy, Minerals and Natural Resources**  
**Oil Conservation Division**  
**1220 S. St Francis Dr.**  
**Santa Fe, NM 87505**

QUESTIONS, Page 7

Action 528323

**QUESTIONS (continued)**

Operator: Enterprise Field Services, LLC PO Box 4324 Houston, TX 77210	OGRID: 241602
	Action Number: 528323
	Action Type: [C-141] Reclamation Report C-141 (C-141-v-Reclamation)

**QUESTIONS**

<b>Reclamation Report</b>	
<i>Only answer the questions in this group if all reclamation steps have been completed.</i>	
Requesting a reclamation approval with this submission	Yes
What was the total reclamation surface area (in square feet) for this site	432
What was the total volume of replacement material (in cubic yards) for this site	96
<i>Per Paragraph (1) of Subsection D of 19.15.29.13 NMAC the reclamation must contain a minimum of four feet of non-waste containing, uncontaminated, earthen material with chloride concentrations less than 600 mg/kg as analyzed by EPA Method 300.0, or other test methods approved by the division. The soil cover must include a top layer, which is either the background thickness of topsoil or one foot of suitable material to establish vegetation at the site, whichever is greater.</i>	
Is the soil top layer complete and is it suitable material to establish vegetation	Yes
On what (estimated) date will (or was) the reseedling commence(d)	09/03/2025
Summarize any additional reclamation activities not included by answers (above)	None
<i>The responsible party must attach information demonstrating they have complied with all applicable reclamation requirements and any conditions or directives of the OCD. This demonstration should be in the form of attachments (in .pdf format) including a scaled site map, any proposed reseedling plans or relevant field notes, photographs of reclaimed area, and a narrative of the reclamation activities. Refer to 19.15.29.13 NMAC.</i>	
I hereby certify that the information given above is true and complete to the best of my knowledge and understand that pursuant to OCD rules and regulations all operators are required to report and/or file certain release notifications and perform corrective actions for releases which may endanger public health or the environment. The acceptance of a C-141 report by the OCD does not relieve the operator of liability should their operations have failed to adequately investigate and remediate contamination that pose a threat to groundwater, surface water, human health or the environment. In addition, OCD acceptance of a C-141 report does not relieve the operator of responsibility for compliance with any other federal, state, or local laws and/or regulations. The responsible party acknowledges they must substantially restore, reclaim, and re-vegetate the impacted surface area to the conditions that existed prior to the release or their final land use in accordance with 19.15.29.13 NMAC including notification to the OCD when reclamation and re-vegetation are complete.	
I hereby agree and sign off to the above statement	Name: Thomas Long Title: Sr Field Environmental Scientist Email: tjlong@eprod.com Date: 11/20/2025

Sante Fe Main Office  
Phone: (505) 476-3441

General Information  
Phone: (505) 629-6116

Online Phone Directory  
<https://www.emnrd.nm.gov/ocd/contact-us>

State of New Mexico  
Energy, Minerals and Natural Resources  
Oil Conservation Division  
1220 S. St Francis Dr.  
Santa Fe, NM 87505

QUESTIONS, Page 8

Action 528323

QUESTIONS (continued)

Operator: Enterprise Field Services, LLC PO Box 4324 Houston, TX 77210	OGRID: 241602
	Action Number: 528323
	Action Type: [C-141] Reclamation Report C-141 (C-141-v-Reclamation)

QUESTIONS

<b>Revegetation Report</b>	
<i>Only answer the questions in this group if all surface restoration, reclamation and re-vegetation obligations have been satisfied.</i>	
Requesting a restoration complete approval with this submission	No
<i>Per Paragraph (4) of Subsection (D) of 19.15.29.13 NMAC for any major or minor release containing liquids, the responsible party must notify the division when reclamation and re-vegetation are complete.</i>	

Sante Fe Main Office  
Phone: (505) 476-3441

General Information  
Phone: (505) 629-6116

Online Phone Directory  
<https://www.emnrd.nm.gov/ocd/contact-us>

State of New Mexico  
Energy, Minerals and Natural Resources  
Oil Conservation Division  
1220 S. St Francis Dr.  
Santa Fe, NM 87505

CONDITIONS

Action 528323

CONDITIONS

Operator: Enterprise Field Services, LLC PO Box 4324 Houston, TX 77210	OGRID: 241602
	Action Number: 528323
	Action Type: [C-141] Reclamation Report C-141 (C-141-v-Reclamation)

CONDITIONS

Created By	Condition	Condition Date
nvez	Remediation closure and reclamation report approved. Release resolved. Pending re-vegetation report.	1/28/2026