

Spill Volume(Bbls) Calculator		
<i>Inputs in blue, Outputs in red</i>		
Length(Ft)	Width(Ft)	Depth(In)
44.000	24.000	2.000
Cubic Feet Impacted		176.000
Barrels		31.34
Soil Type		Lined Containment
Bbls Assuming 100% Saturation		31.34
Saturation	Fluid present with shovel/backhoe	
Estimated Barrels Released		31.40000

Instructions
1. Input spill measurements below. Length and width need to be input in feet and depth in inches.
2. Select a soil type from the drop down menu.
3. Select a saturation level from the drop down menu.
(For data gathering instructions see appendix tab)

Measurements	
Length (ft)	44
Width (ft)	24
Depth (in)	2.000









Sherman 4 Fee 6H TB

Incident ID NAPP2601229026

PREPARED BY:
PIMA ENVIRONMENTAL SERVICES, LLC

PREPARED FOR:
Spur Energy

Liner Inspection and Closure Report

March 10, 2026

FACILITY NAME	Sherman 4 Fee 6H TB
DATE OF RELEASE	01/07/2026
INCIDENT NO.	NAPP2601229026



Pima Environmental Services
 5614 N. Lovington Highway
 Hobbs, NM 88240
 575-964-7740

Site Characterization	
DTGW What is the shallowest DTGW beneath the area affected by the release in ft below ground surface (ft bgs)	Between 75 and 100 ft.
GW Depth Determination What method was used to determine the DTGW?	NM OSE iWaters Database Search
Ground or Surface Water Impacted Did this release impact GW or Surface Water?	No
What is the min. distance between the closest lateral extents of the release and the following surace areas?	
Distance to Watercourse A continuously flowing watercourse or any other significant watercourse?	Between 1000ft and 1/2 mi.
Distance to Lakebed Any lakebed, sinkhole, or playa lake (measured from the ordinary high-water mark)?	Between 1 mi. and 5 mi.
Distance to Public An occupied permanent residence, school, hospital, institution, or church?	Between 1 mi. and 5 mi.
Distance to Private A spring or a private domestic FW well used by less than five households for domestic or stock watering purposes?	Between 1000ft and 1/2 mi.
Distance to Fresh Water Any other FW well spring?	Between 1000ft and 1/2 mi.
Within Municipal Boundaries Incorporated municipal boundaries or a defined municipal FW well field?	Between 1 mi. and 5 mi.
Distance to Wetland A wetland?	Between 1000ft and 1/2 mi.
Overlying Subsurface Mine A subsurface mine?	>5 mi.
Overlying (Non-Karst) Unstable Area An (non-karst) unstable area?	> 5 mi.
Risk of Karst Geology Categorize the risk of this well/site being in a karst geology?	Medium
Distance to or Within 100 yr Floodplain A 100-year floodplain?	Between 1000ft and 1/2 mi.
Areas NOT Other Site Did the release impact areas not on exploration, development, production, or storage site?	No
Remediation Plan	
Have the lateral and vertical extents of contamination been fully delineated?	Yes
Lined Containment Area Only Was this release entirely contained within a lined containment area?	Yes
Soil Containment Sampling	(EPA 300.00 or SW4500 CI B?)
Chloride Constituent Chloride (mg/kg)	0
	(EPA SW-846 Method 8015M)?
TPH (GRO+DRO+MRO) Constituent TPH (mg/kg)	0
	(EPA SW-846 Method 8015M)?
GRO + DRO Constituent GRO-DRO (mg/kg)	0
	(EPA SW-846 Method 8021B or 8260B)?
BTEX Constituent BTEX (mg/kg)	0
	(EPA SW-846 Method 8021B or 8260B)?
Benzene Constituent Benzene (mg/kg)	0
Per Subsection B of 19.15.29.11 NMAC unless the site characterization report includes completed efforts at remediation, the report must include a proposed remediation plan in accordance with 19.15.29 NMAC, which includes the anticipated timelines for beginning and completing the remediation.	
Start of Remediation On what estimated date will remediation commence?	01/30/2026
Start of Sampling or Liner Inspection On what date will (or did) the final sampling or liner inspection occur?	01/30/2026
Finish of Remediation On what date will (or was) the remediation complete(d)?	01/30/2026
Surface Area (sq ft) To Be Reclaimed What is the estimated surface area (in sq ft) that will be reclaimed?	0
Surface Area (sq ft) To Be Remediated What is the estimated surface are (in sq ft) that will be remediated?	0
Volume (cu yd) To Be Remediated What is the estimated volume (in cubic yds) that will be remediated?	0
Remediation Plan (Cont.) Please answer all that apply	
Ex Situ Excavation Off-Site (Ex Situ) Excavation and off-site disposal (i.e. dig and haul, hydrovac, etc)?	No
Ex Situ Excavation On-Site (Ex Situ) Excavation and on-site remediation (i.e. On-Site Land Farms)?	No
In Situ Soil Vapor Extraction (SVE)?	No
In Situ Chemical Processing (In Situ) Chemical processing (i.e. Soil Shredding, Potassium Permanganate, etc.)?	No
In Situ Biological Processing (In Situ) Biological processing (i.e. Microbes/Fertilizer, etc.)?	No
In Situ Physical Processing (In Situ) Physical processing (i.e. Soil Washing, Gypsum, Disking, etc.)?	No
In Situ Ground Water Abatement GW Abatement pursuant to 19.15.30 NMAC?	No
Remediation Other Other (Non-listed remedial process)?	No
Deferral Request Only	
Requesting a deferral of the remediation closure due date with the approval of this submission	No

FACILITY NAME	Sherman 4 Fee 6H TB
DATE OF RELEASE	01/07/2026
INCIDENT NO.	NAPP2601229026



Pima Environmental Services
 5614 N. Lovington Highway
 Hobbs, NM 88240
 575-964-7740

Requesting a remediation closure approval with this submission?	Yes
Have the lateral and vertical extents of contamination been fully delineated?	Yes
Was this release entirely contained within a lined containment area?	Yes
Restored Areas For Production Use All areas reasonably needed for production or subsequent drilling operations have been stabilized, returned to the sites existing grade, and have a soil cover that prevents ponding of water, minimizing dust and erosion?	Yes
Total Surface Area (sq ft) Remediated What was the total surface area (sq ft) remediated?	4,500
Total Volume (cu yd) Remediated What was the total volume (cubic yards) remediated?	0
Reclaimed to Condition Prior Release All areas not reasonably needed for production or subsequent drilling operations have been reclaimed to contain a minimum of four ft of non-waste contain earthen material with concentrations less than 600 mg/kg chlorides, 100 mg/kg TPH, 50 mg/kg BTEX and 10 mg/kg Benzene?	Yes
Total Surface Area (sq ft) Reclaimed What was the total surface area (in sq ft) reclaimed?	0
Remediation Summary Summarize any additional remedialton activities not included by answers (above).	The lined containment was power-washed, and all standing fluids were recovered using a vacuum truck. Following remediation, a liner inspection was conducted, confirming that the containment liner maintained its integrity.



Pima Environmental Services
5614 N. Lovington Highway
Hobbs, NM 88240
575-964-7740

March 10, 2026

NMOCD District 2
811 S. First St
Artesia, NM, 88210

RE: Liner Inspection and Closure Report
Sherman 4 Fee 6H TB
Facility ID: N/A
GPS: Latitude 32.68338 Longitude -104.38838
UL- N, Section 04, Township 19S, Range 26E
NMOCD Reference No. Napp2601229026

Spur Energy Partners (Spur) has contracted Pima Environmental Services, LLC (Pima) to perform a liner inspection and prepare this closure report for the release of crude oil and produced water that happened on the Sherman 4 Fee 6H TB (Sherman). An initial release was discovered on January 7, 2026. This incident was assigned Incident ID Napp2601229026, by the New Mexico Oil Conservation Division (NMOCD).

Site Information and Site Characterization

The Sherman is located approximately 3.31 miles south west of Dayton, NM. This spill site is in Unit N, Section 4, Township 19S, Range 26E, Latitude 32.68338 Longitude -104.38838, Eddy County, NM. A Location Map can be found in Figure 1.

Based on well water data from the New Mexico Office of the State Engineer, the nearest recorded groundwater depth in this area is approximately 97 feet bgs, located about 0.32 miles from the Sherman. Conversely, according to United States Geological Survey well records, no known water wells are present within the immediate vicinity of the Sherman. Detailed water survey references and well locations are provided in Appendix A, including all associated maps. The Sherman is located within an area classified as having medium karst potential, as shown in Figure 3. A detailed topographic map of the site is also provided for reference in Figure 2.

Release Information

Napp2601229026: On January 7, 2026, a heater check valve developed a hole, resulting in the release of approximately 2 barrels of crude oil and 29 barrels of produced water into the lined containment area. Spur personnel immediately initiated response and recovery efforts, and all released fluids were successfully recovered using a vacuum truck. No impacts occurred outside of the lined containment.

A site map is included as Figure 4.

Site Assessment and Liner Inspection

On January 27, 2026, Spur personnel submitted a notification for a liner inspection, adhering to the necessary 48-hour notice period. The details of the 48-hour notification can be referenced in Appendix C.

On January 30, 2026, Pima Environmental conducted a thorough inspection of the lined containment area. The evaluation process included cleaning the liner with a power washer and using a vacuum truck to ensure the complete removal of any residual fluids. The inspection confirmed that the system remained intact and successfully retained all fluids. As a result, the liner was deemed functional, preventing any further environmental impact. A detailed report, including photographic evidence, is provided in Appendices C and D.

Closure Request

After careful review, Pima requests that this incident nAPP2601229026 be closed. Spur has complied with the applicable closure requirements.

For questions or additional information, please feel free to contact:
Spur Energy – Katherine Purvis at 575-441-8619 or katherine.purvis@spurenergy.com
Pima Environmental Services – Sebastian Orozco at 619-721-4813 or Sebastian@pimaoil.com.

Attachments

Figures:

- 1- Location Map
- 2- Topographic Map
- 3- Karst Map
- 4- Site Map

Appendices:

- Appendix A- Referenced Water Surveys
- Appendix B- Soil Survey, Geological Data, FEMA Flood Map, Wetland Map
- Appendix C- 48 Hour Notification and Liner Inspection Form
- Appendix D- Photographic Documentation



Figures:

Figure 1- Location Map

Figure 2- Topographic Map



Figure 3- Karst Map

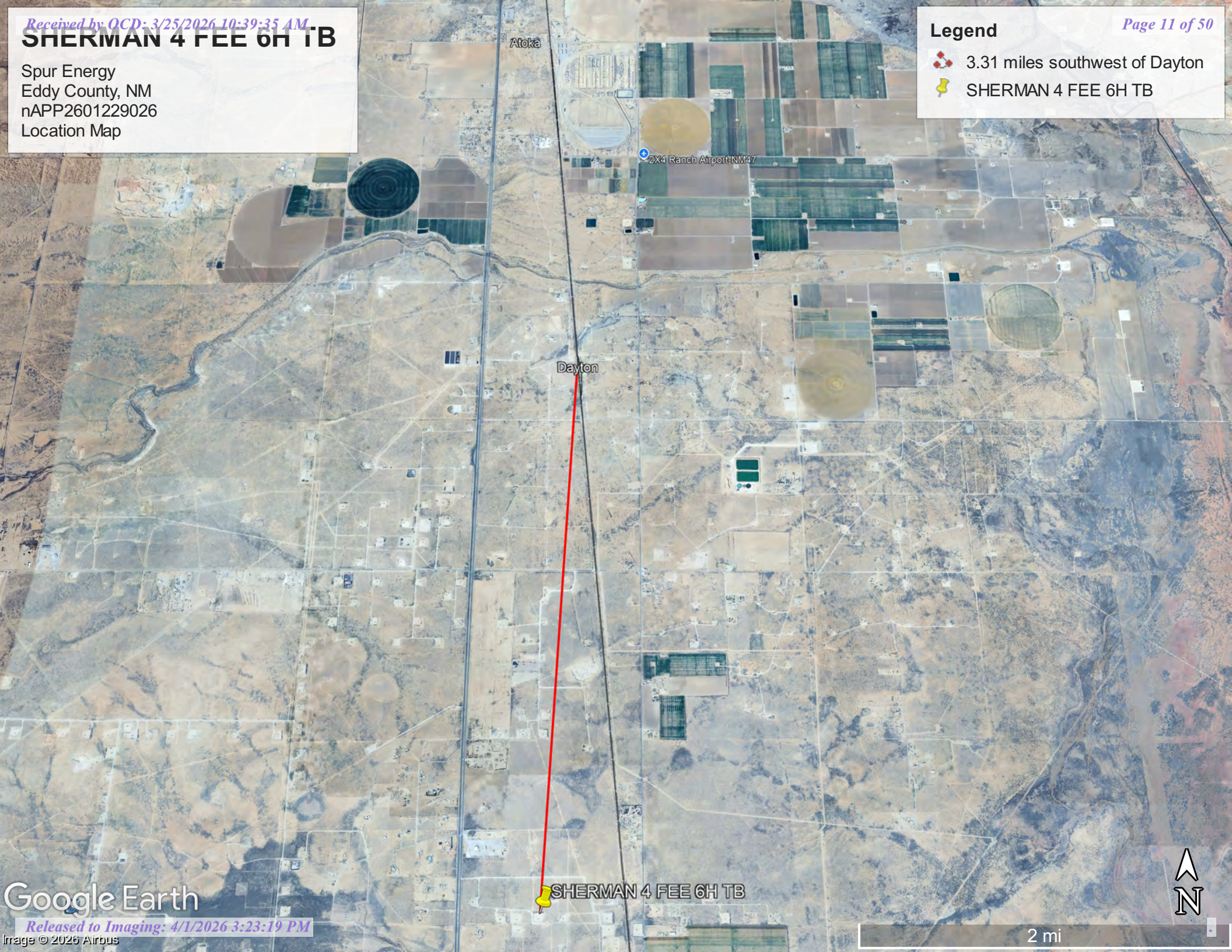
Figure 4- Site Map

SHERMAN 4 FEE 6H TB

Spur Energy
Eddy County, NM
nAPP2601229026
Location Map

Legend

-  3.31 miles southwest of Dayton
-  SHERMAN 4 FEE 6H TB



Aloka

2X4 Ranch Airport NM47

Dayton


SHERMAN 4 FEE 6H TB

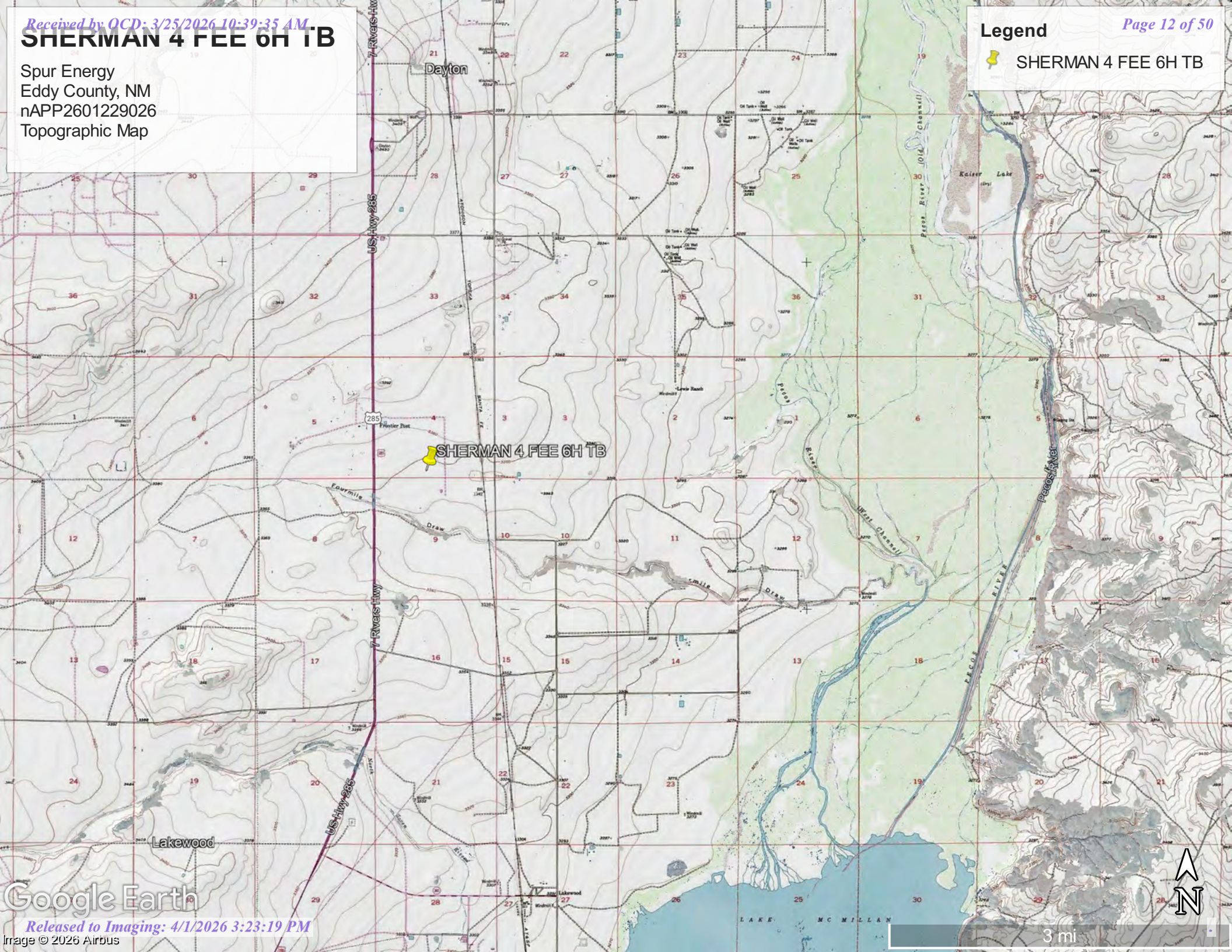


SHERMAN 4 FEE 6H TB

Spur Energy
Eddy County, NM
nAPP2601229026
Topographic Map

Legend





-  SHERMAN 4 FEE 6H TB

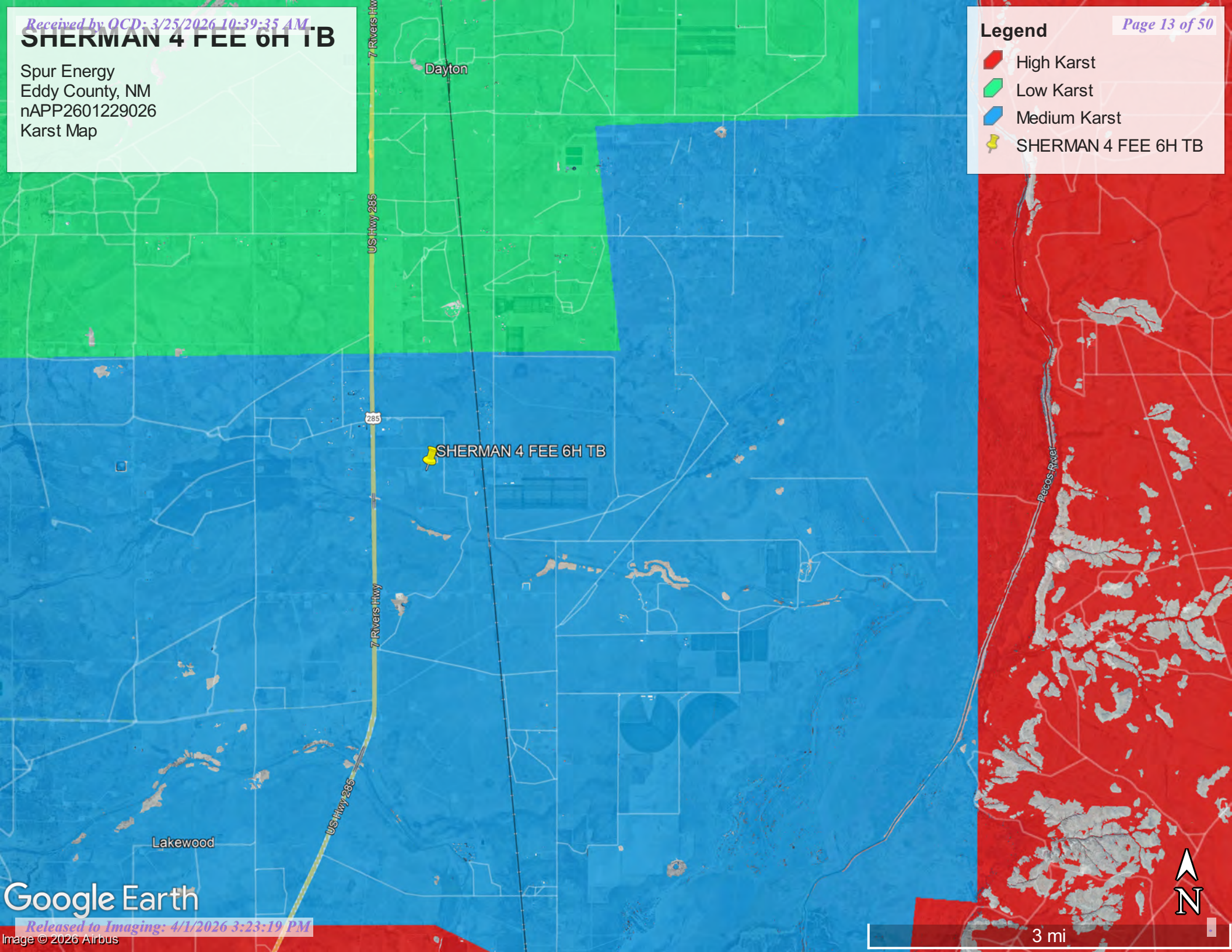


SHERMAN 4 FEE 6H TB

Spur Energy
Eddy County, NM
nAPP2601229026
Karst Map

Legend

-  High Karst
-  Low Karst
-  Medium Karst
-  SHERMAN 4 FEE 6H TB



Google Earth



3 mi



SHERMAN 4 FEE 6H TB

Spur Energy
Eddy County, NM
nAPP2601229026
Site Map

Legend

-  Liner Inspection Area
-  Sherman 4 Fee 6H TB





Appendix A


Water Surveys:

- OSE
- USGS
- Surface Water Map

Point of Diversion Summary

quarters are 1=NW 2=NE 3=SW 4=SE
quarters are smallest to largest

NAD83 UTM in meters

Well Tag	POD Nbr	Q64	Q16	Q4	Sec	Tws	Rng	X	Y	Map
NA	RA 06813	NW	NW	NW	09	19S	26E	556848.2	3616179.2	

* UTM location was derived from PLSS - see Help

Driller License:	749	Driller Company:	HUGHES, SAMUEL DALE		
Driller Name:	HUGHES, SAMUEL DALE., CE				
Drill Start Date:	1981-08-10	Drill Finish Date:	1981-08-14	Plug Date:	
Log File Date:	1981-08-21	PCW Rcv Date:		Source:	Shallow
Pump Type:		Pipe Discharge Size:		Estimated Yield:	26
Casing Size:	6.63	Depth Well:	171	Depth Water:	97

Water Bearing Stratifications:

Top	Bottom	Description
71	120	Other/Unknown
136	171	Sandstone/Gravel/Conglomerate

Casing Perforations:

Top	Bottom
127	171

The data is furnished by the NMOSE/ISC and is accepted by the recipient with the expressed understanding that the OSE/ISC make no warranties, expressed or implied, concerning the accuracy, completeness, reliability, usability, or suitability for any particular purpose of the data.

1/12/26 3:19 PM MST




Point of Diversion Summary

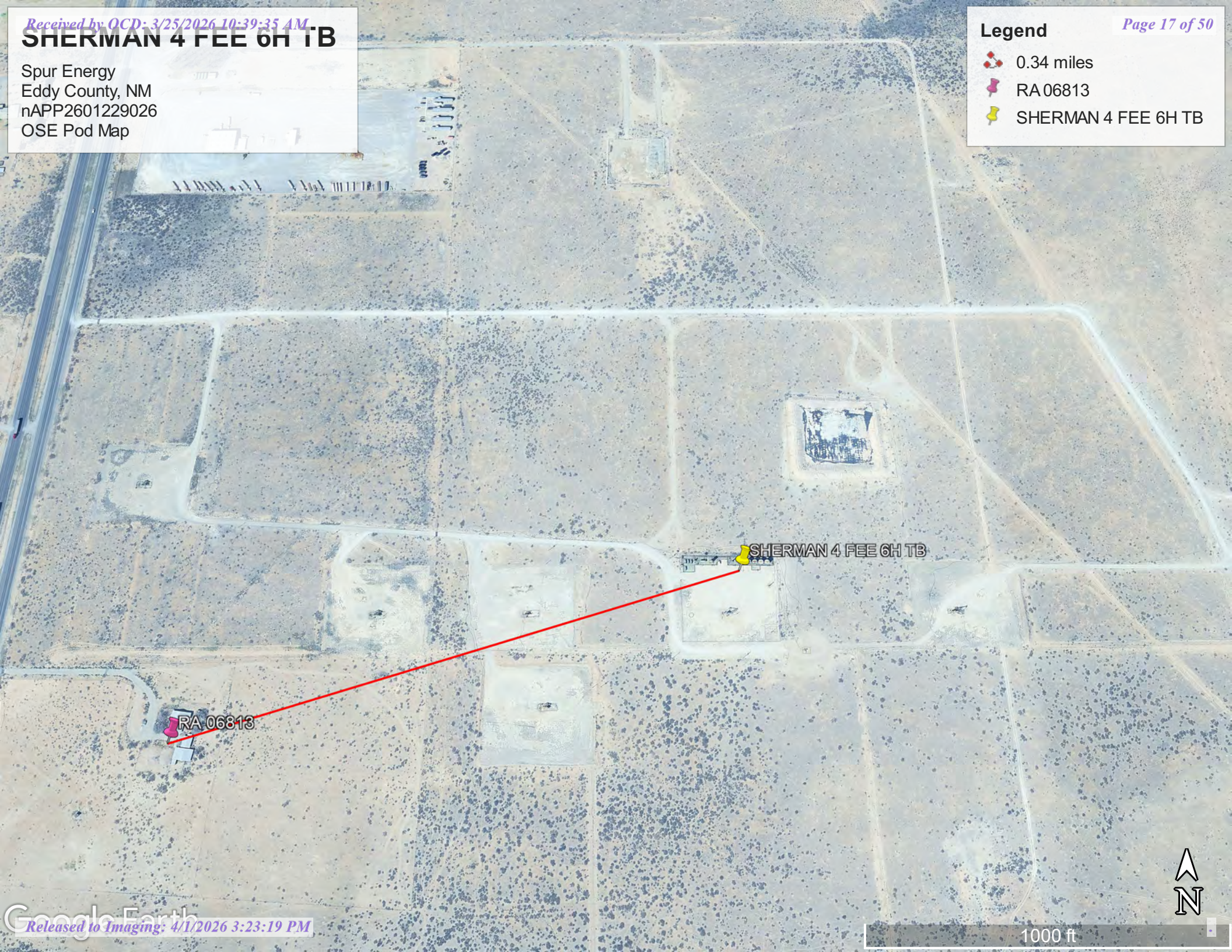
©2024 New Mexico Office of the State Engineer, All Rights Reserved. | [Disclaimer](#) | [Contact Us](#) | [Help](#) | [Home](#) |

SHERMAN 4 FEE 6H TB

Spur Energy
Eddy County, NM
nAPP2601229026
OSE Pod Map

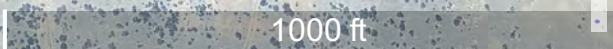
Legend Page 17 of 50

-  0.34 miles
-  RA 06813
-  SHERMAN 4 FEE 6H TB



RA 06813

SHERMAN 4 FEE 6H TB





USGS Home
Contact USGS
Search USGS

National Water Information System: Web Interface

USGS Water Resources

Data Category: Geographic Area:

Click to hide News Bulletins

- Explore the *NEW* [USGS National Water Dashboard](#) interactive map to access real-time water data from over 13,500 stations nationwide.

Groundwater levels for the Nation

i Ground water level pages will be decommissioned in early 2026. These gwlevel pages are frozen as of November 18th, 2025. Please find the [modernized pages in WDFN](#) that suit you best. Learn more about our [modernization plans and timeline](#) and [new pages](#).

Search Results -- 1 sites found

site_no list =

- 324042104265801

Minimum number of levels = 1

[Save file of selected sites](#) to local disk for future upload

USGS 324042104265801 19S.25E.11.24333

Available data for this site

Eddy County, New Mexico

Hydrologic Unit Code 13060011

Latitude 32°40'42", Longitude 104°26'58" NAD27

Land-surface elevation 3,418 feet above NAVD88

The depth of the well is 211 feet below land surface.

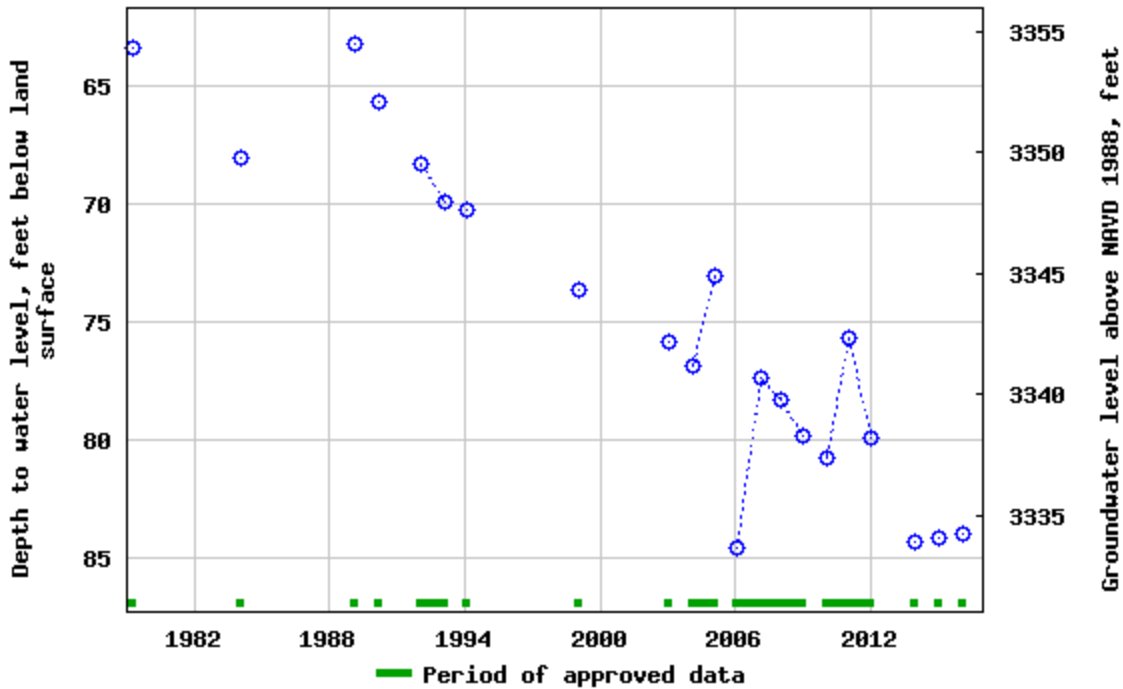
This well is completed in the Roswell Basin aquifer system (S400RSWLBS) national aquifer.

This well is completed in the Alluvium, Bolson Deposits and Other Surface Deposits (110AVMB) local aquifer.

Output formats

Table of data
Tab-separated data
Graph of data
Reselect period

USGS 324042104265801 19S.25E.11.24333



Breaks in the plot represent a gap of at least one year between field measurements. [Download a presentation-quality graph](#)

- [Questions or Comments](#)
- [Help](#)
- [Data Tips](#)
- [Explanation of terms](#)
- [Subscribe for system changes](#)

[Accessibility](#) [FOIA](#) [Privacy](#) [Policies and Notices](#)

[U.S. Department of the Interior](#) | [U.S. Geological Survey](#)

Title: Groundwater for USA: Water Levels

URL: <https://nwis.waterdata.usgs.gov/nwis/gwlevels?>



Page Contact Information: [USGS Water Data Support Team](#)




Page Last Modified: 2026-01-12 17:28:42 EST

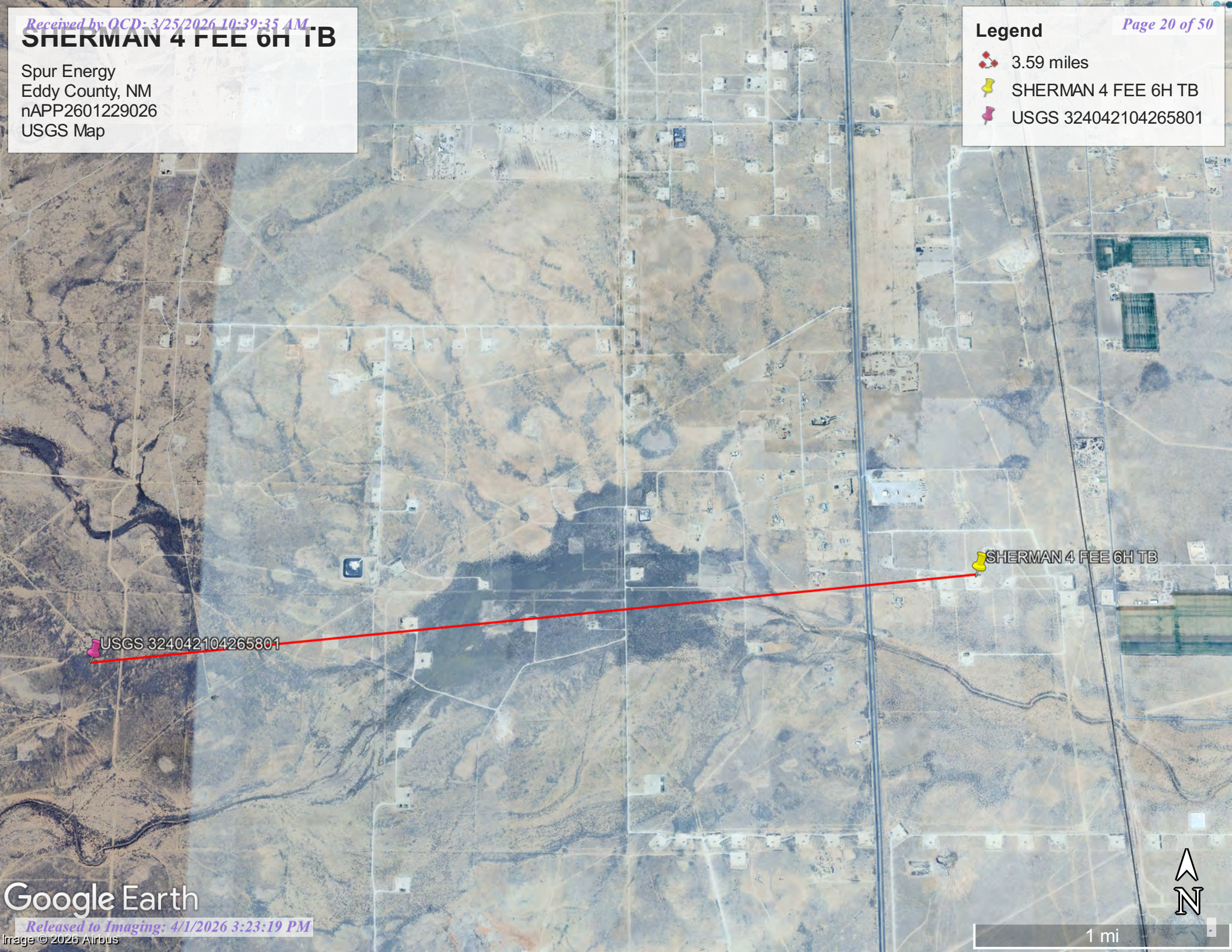
0.73 0.58 nadww01

SHERMAN 4 FEE 6H TB

Spur Energy
Eddy County, NM
nAPP2601229026
USGS Map

Legend




-  3.59 miles
-  SHERMAN 4 FEE 6H TB
-  USGS 324042104265801



SHERMAN 4 FEE 6H TB

Spur Energy
Eddy County, NM
nAPP2601229026
Surface Water Map

Legend

-  0.10 miles
-  Fresh Water Pond
-  SHERMAN 4 FEE 6H TB





Appendix B

- Soil Survey & Soil Maps
- Geological Data
- FEMA Flood Map
- Wetlands Map

Map Unit Description: Reagan loam, 0 to 3 percent slopes---Eddy Area, New Mexico

Eddy Area, New Mexico

RA—Reagan loam, 0 to 3 percent slopes

Map Unit Setting

National map unit symbol: 1w5c

Elevation: 1,100 to 4,400 feet

Mean annual precipitation: 7 to 14 inches

Mean annual air temperature: 60 to 70 degrees F

Frost-free period: 200 to 240 days

Farmland classification: Farmland of statewide importance

Map Unit Composition

Reagan and similar soils: 98 percent

Minor components: 2 percent

Estimates are based on observations, descriptions, and transects of the mapunit.

Description of Reagan

Setting

Landform: Alluvial fans, fan remnants

Landform position (three-dimensional): Rise

Down-slope shape: Linear, convex

Across-slope shape: Linear

Parent material: Alluvium and/or eolian deposits

Typical profile

H1 - 0 to 8 inches: loam

H2 - 8 to 60 inches: loam

Properties and qualities

Slope: 0 to 3 percent

Depth to restrictive feature: More than 80 inches

Drainage class: Well drained

Runoff class: Low

Capacity of the most limiting layer to transmit water

(Ksat): Moderately high to high (0.60 to 2.00 in/hr)

Depth to water table: More than 80 inches

Frequency of flooding: None

Frequency of ponding: None

Calcium carbonate, maximum content: 40 percent

Maximum salinity: Very slightly saline to moderately saline (2.0 to 8.0 mmhos/cm)

Sodium adsorption ratio, maximum: 1.0

Available water supply, 0 to 60 inches: Moderate (about 8.2 inches)

Interpretive groups

Land capability classification (irrigated): 2e

Land capability classification (nonirrigated): 6e

Hydrologic Soil Group: B

Map Unit Description: Reagan loam, 0 to 3 percent slopes---Eddy Area, New Mexico

Ecological site: R070BC007NM - Loamy
Hydric soil rating: No

Minor Components

Atoka

Percent of map unit: 1 percent
Ecological site: R070BC007NM - Loamy
Hydric soil rating: No

Upton

Percent of map unit: 1 percent
Ecological site: R070BC025NM - Shallow
Hydric soil rating: No

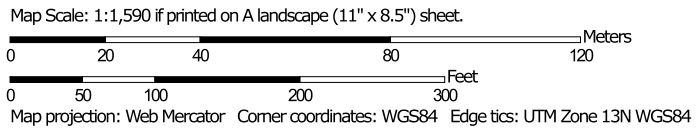
Data Source Information

Soil Survey Area: Eddy Area, New Mexico
Survey Area Data: Version 21, Sep 9, 2025

Soil Map—Eddy Area, New Mexico




Soil Map may not be valid at this scale.




MAP LEGEND

Area of Interest (AOI)

 Area of Interest (AOI)




















Soils







 Soil Map Unit Polygons

 Soil Map Unit Lines


 Soil Map Unit Points

Special Point Features




-  Blowout
-  Borrow Pit
-  Clay Spot
-  Closed Depression
-  Gravel Pit
-  Gravelly Spot
-  Landfill
-  Lava Flow
-  Marsh or swamp
-  Mine or Quarry
-  Miscellaneous Water
-  Perennial Water
-  Rock Outcrop
-  Saline Spot
-  Sandy Spot
-  Severely Eroded Spot
-  Sinkhole
-  Slide or Slip
-  Sodic Spot

-  Spoil Area
-  Stony Spot
-  Very Stony Spot
-  Wet Spot
-  Other
-  Special Line Features


Water Features

 Streams and Canals

Transportation

-  Rails
-  Interstate Highways
-  US Routes
-  Major Roads
-  Local Roads

Background

 Aerial Photography

MAP INFORMATION

The soil surveys that comprise your AOI were mapped at 1:20,000.

Warning: Soil Map may not be valid at this scale.
 Enlargement of maps beyond the scale of mapping can cause misunderstanding of the detail of mapping and accuracy of soil line placement. The maps do not show the small areas of contrasting soils that could have been shown at a more detailed scale.

Please rely on the bar scale on each map sheet for map measurements.

Source of Map: Natural Resources Conservation Service
 Web Soil Survey URL:
 Coordinate System: Web Mercator (EPSG:3857)

Maps from the Web Soil Survey are based on the Web Mercator projection, which preserves direction and shape but distorts distance and area. A projection that preserves area, such as the Albers equal-area conic projection, should be used if more accurate calculations of distance or area are required.

This product is generated from the USDA-NRCS certified data as of the version date(s) listed below.

Soil Survey Area: Eddy Area, New Mexico
 Survey Area Data: Version 21, Sep 9, 2025

Soil map units are labeled (as space allows) for map scales 1:50,000 or larger.

Date(s) aerial images were photographed: Nov 12, 2022—Dec 2, 2022

The orthophoto or other base map on which the soil lines were compiled and digitized probably differs from the background imagery displayed on these maps. As a result, some minor shifting of map unit boundaries may be evident.

Map Unit Legend

Map Unit Symbol	Map Unit Name	Acres in AOI	Percent of AOI
RA	Reagan loam, 0 to 3 percent slopes	9.3	100.0%
Totals for Area of Interest		9.3	100.0%

(<https://www.usgs.gov/>)

Mineral Resources (<https://www.usgs.gov/energy-and-minerals/mineral-resources-program>)

/ Online Spatial Data (/) / Geology (/geology/) / by state (/geology/state/)

/ New Mexico (/geology/state/state.php?state=NM)

Piedmont alluvial deposits

XML (/geology/state/xml/NMQp;0)

JSON (/geology/state/json/NMQp;0)

Shapefile (/geology/state/unit-shape.php?unit=NMQp;0)

Includes deposits of higher gradient tributaries bordering major stream valleys, alluvial veneers of the piedmont slope, and alluvial fans. May locally include uppermost Pliocene deposits.

State	New Mexico (/geology/state/state.php?state=NM)
Name	Piedmont alluvial deposits
Geologic age	Holocene to lower Pleistocene
Lithologic constituents	Major Unconsolidated (Alluvial) <i>Includes deposits of higher gradient tributaries bordering major stream valleys, alluvial veneers of the piedmont slope, and alluvial fans</i>
References	<p>Green, G.N., Jones, G.E., and Anderson, O.J., 1997, The Digital Geologic Map of New Mexico in ARC/INFO Format: U.S. Geological Survey Open-File Report 97-0052, 9 p., scale 1:500,000.</p> <p>https://pubs.er.usgs.gov/publication/ofr9752 (https://pubs.er.usgs.gov/publication/ofr9752)</p>
NGMDB product	<p>NGMDB product page for 59219 (https://ngmdb.usgs.gov/Prodesc/proddesc_59219.htm)</p> <p>NGMDB product page for 22974 (https://ngmdb.usgs.gov/Prodesc/proddesc_22974.htm)</p>

Counties Bernalillo (/geology/state/fips-unit.php?code=f35001) - Catron (/geology/state/fips-unit.php?code=f35003) - Chaves (/geology/state/fips-unit.php?code=f35005) - Colfax (/geology/state/fips-unit.php?code=f35007) - DeBaca (/geology/state/fips-unit.php?code=f35011) - Dona Ana (/geology/state/fips-unit.php?code=f35013) - Eddy (/geology/state/fips-unit.php?code=f35015) - Grant (/geology/state/fips-unit.php?code=f35017) - Guadalupe (/geology/state/fips-unit.php?code=f35019) - Hidalgo (/geology/state/fips-unit.php?code=f35023) - Lea (/geology/state/fips-unit.php?code=f35025) - Lincoln (/geology/state/fips-unit.php?code=f35027) - Los Alamos (/geology/state/fips-unit.php?code=f35028) - Luna (/geology/state/fips-unit.php?code=f35029) - Mora (/geology/state/fips-unit.php?code=f35033) - Otero (/geology/state/fips-unit.php?code=f35035) - Quay (/geology/state/fips-unit.php?code=f35037) - Rio Arriba (/geology/state/fips-unit.php?code=f35039) - Roosevelt (/geology/state/fips-unit.php?code=f35041) - Sandoval (/geology/state/fips-unit.php?code=f35043) - San Miguel (/geology/state/fips-unit.php?code=f35047) - Santa Fe (/geology/state/fips-unit.php?code=f35049) - Sierra (/geology/state/fips-unit.php?code=f35051) - Socorro (/geology/state/fips-unit.php?code=f35053) - Taos (/geology/state/fips-unit.php?code=f35055) - Tarrant (/geology/state/fips-unit.php?code=f35057) - Valencia (/geology/state/fips-unit.php?code=f35061)

DOI Privacy Policy (<https://www.doi.gov/privacy>) | Legal (https://www.usgs.gov/laws/policies_notices.html) |

Accessibility (<https://www2.usgs.gov/laws/accessibility.html>) | Site Map (<https://www.usgs.gov/sitemap.html>) |

Contact USGS (<https://answers.usgs.gov/>)

U.S. Department of the Interior (<https://www.doi.gov/>) | DOI Inspector General (<https://www.doiig.gov/>) |




White House (<https://www.whitehouse.gov/>) | E-gov (<https://www.whitehouse.gov/omb/management/egov/>) |

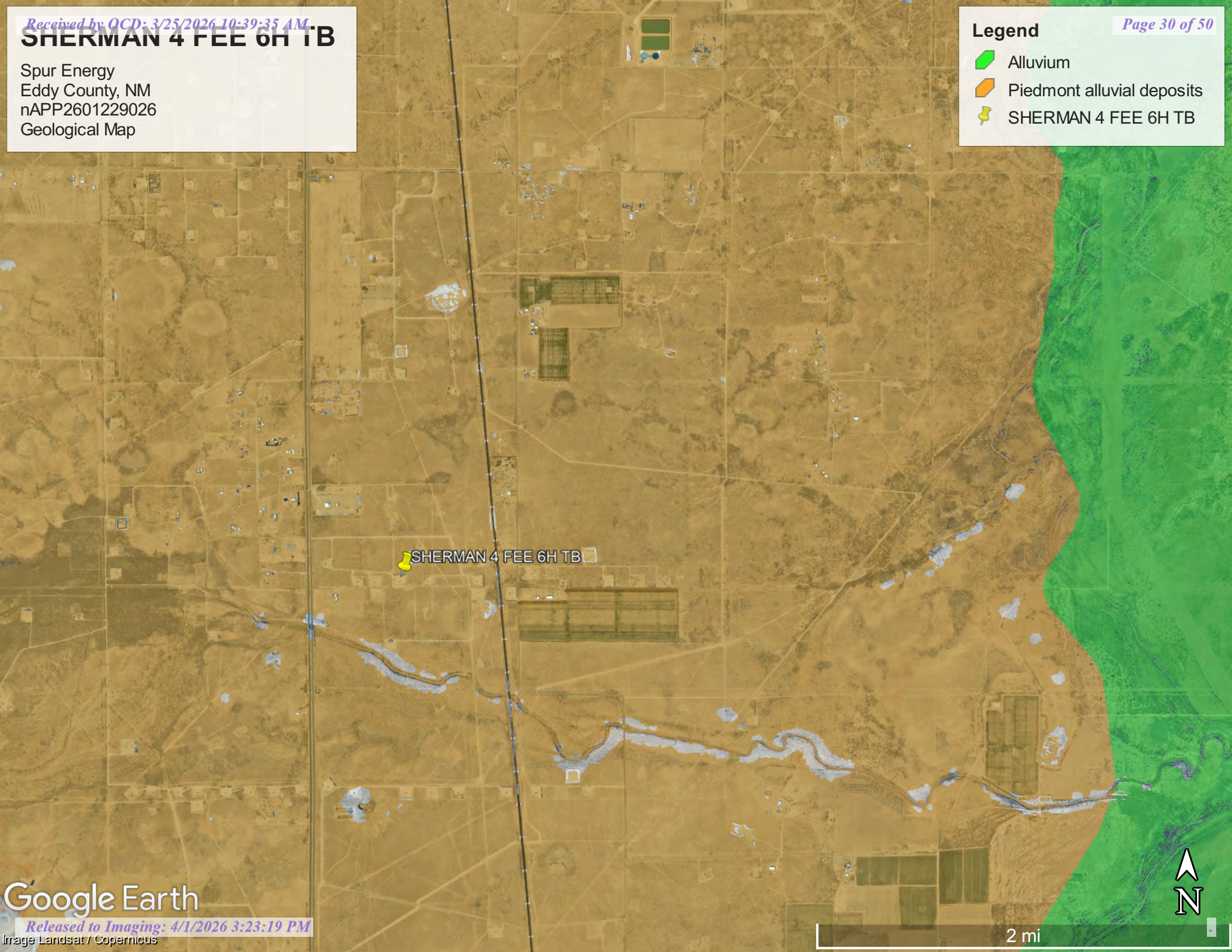
No Fear Act (<https://www.doi.gov/pmb/eeo/no-fear-act>) | FOIA (<https://www2.usgs.gov/foia>)

SHERMAN 4 FEE 6H TB

Spur Energy
Eddy County, NM
nAPP2601229026
Geological Map

Legend

-  Alluvium
-  Piedmont alluvial deposits
-  SHERMAN 4 FEE 6H TB



SHERMAN 4 FEE 6H TB



National Flood Hazard Layer FIRMette



104°23'36"W 32°41'15"N



Legend

SEE FIS REPORT FOR DETAILED LEGEND AND INDEX MAP FOR FIRM PANEL LAYOUT

- SPECIAL FLOOD HAZARD AREAS**
 - Without Base Flood Elevation (BFE) Zone A, V, A99
 - With BFE or Depth Zone AE, AO, AH, VE, AR
 - Regulatory Floodway
 - OTHER AREAS OF FLOOD HAZARD**
 - 0.2% Annual Chance Flood Hazard, Areas of 1% annual chance flood with average depth less than one foot or with drainage areas of less than one square mile Zone X
 - Future Conditions 1% Annual Chance Flood Hazard Zone X
 - Area with Reduced Flood Risk due to Levee. See Notes. Zone X
 - Area with Flood Risk due to Levee Zone D
 - OTHER AREAS**
 - NO SCREEN Area of Minimal Flood Hazard Zone X
 - Effective LOMRs
 - Area of Undetermined Flood Hazard Zone D
 - GENERAL STRUCTURES**
 - Channel, Culvert, or Storm Sewer
 - Levee, Dike, or Floodwall
 - OTHER FEATURES**
 - Cross Sections with 1% Annual Chance Water Surface Elevation
 - Coastal Transect
 - Base Flood Elevation Line (BFE)
 - Limit of Study
 - Jurisdiction Boundary
 - Coastal Transect Baseline
 - Profile Baseline
 - Hydrographic Feature
 - MAP PANELS**
 - Digital Data Available
 - No Digital Data Available
 - Unmapped
- The pin displayed on the map is an approximate point selected by the user and does not represent an authoritative property location.

0 250 500 1,000 1,500 2,000 Feet

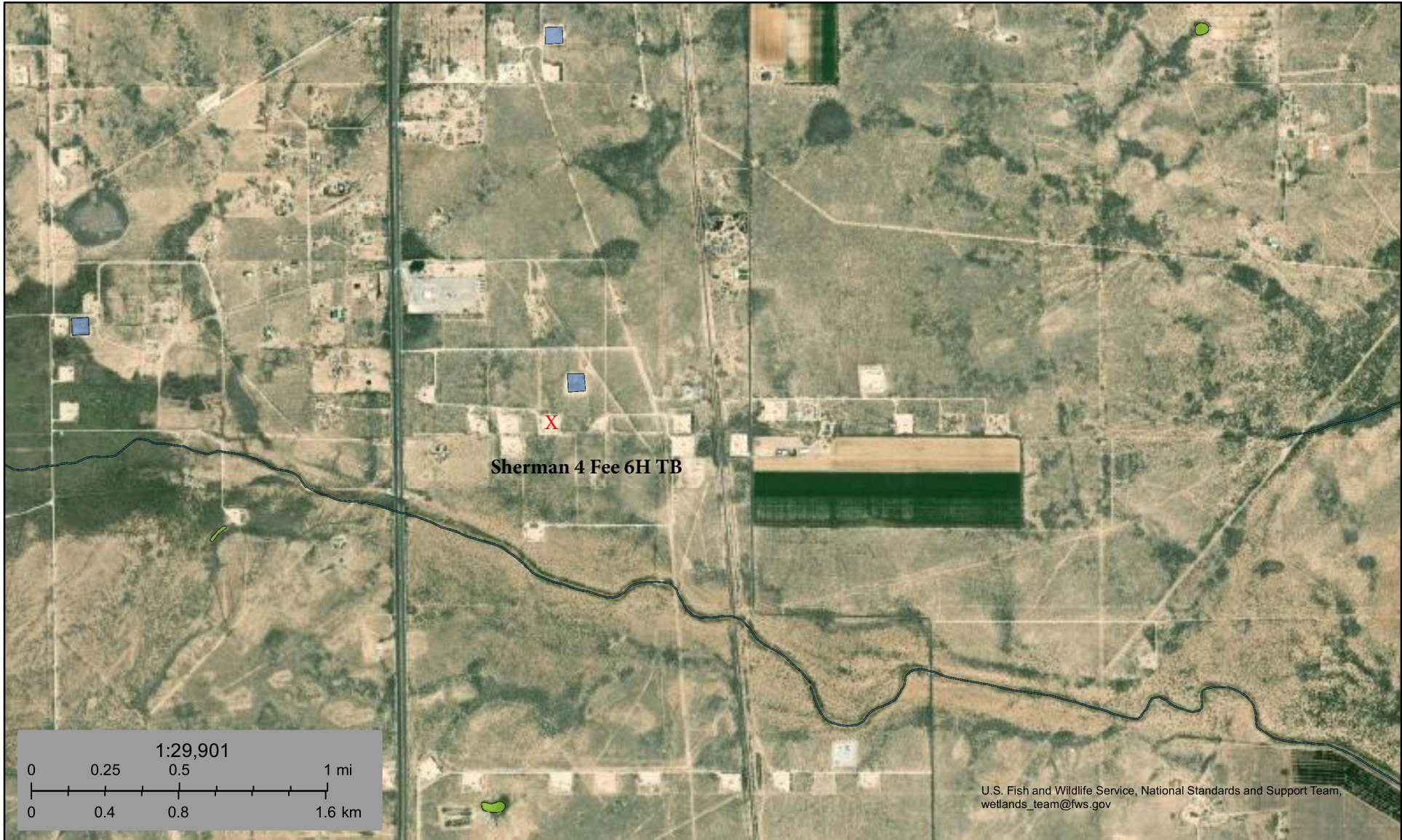
1:6,000

104°22'58"W 32°40'45"N

This map complies with FEMA's standards for the use of digital flood maps if it is not void as described below. The basemap shown complies with FEMA's basemap accuracy standards

The flood hazard information is derived directly from the authoritative NFHL web services provided by FEMA. This map was exported on 1/12/2026 at 7:49 PM and does not reflect changes or amendments subsequent to this date and time. The NFHL and effective information may change or become superseded by new data over time.

This map image is void if the one or more of the following map elements do not appear: basemap imagery, flood zone labels, legend, scale bar, map creation date, community identifiers, FIRM panel number, and FIRM effective date. Map images for unmapped and unmodernized areas cannot be used for regulatory purposes.



January 12, 2026

Wetlands

- | | | | | | |
|--|--------------------------------|--|-----------------------------------|--|-------|
| | Estuarine and Marine Deepwater | | Freshwater Emergent Wetland | | Lake |
| | Estuarine and Marine Wetland | | Freshwater Forested/Shrub Wetland | | Other |
| | Freshwater Pond | | Riverine | | |

This map is for general reference only. The US Fish and Wildlife Service is not responsible for the accuracy or currentness of the base data shown on this map. All wetlands related data should be used in accordance with the layer metadata found on the Wetlands Mapper web site.



Appendix C

- 48-Hour Notification
- Liner Inspection Form

Sebastian@pimaoil.com

From: OCDOnline@emnrd.nm.gov
Sent: Tuesday, January 27, 2026 4:14 PM
To: sebastian@pimaoil.com
Subject: The Oil Conservation Division (OCD) has accepted the application, Application ID: 547240

To whom it may concern (c/o Sebastian Orozco for Spur Energy Partners LLC),

The OCD has received the submitted *Notification for Liner Inspection for a Release* (C-141L), for incident ID (n#) nAPP2601229026.

The liner inspection is expected to take place:

When: 01/30/2026 @ 08:00

Where: N-04-19S-26E 0 FNL 0 FEL (32.6834,-104.3881)

Additional Information: Pima Environmental Services
619-721-4813

Additional Instructions: 32.683459,-104.387994

An OCD representative may be available onsite at the date and time reported. In the absence or presence of an OCD representative, liner inspection pursuant to 19.15.29.11.A(5)(a) NMAC is required. Should there be a change in the scheduled date and time of the sampling event, then another notification should be resubmitted through OCD permitting as soon as possible.

- **Failure to notify the OCD of liner inspections including any changes in date/time per the requirements of 19.15.29.11.A(5)(a)(ii) NMAC, may result in the inspection not being accepted.**

If you have any questions regarding this application, or don't know why you have received this email, please contact us.

New Mexico Energy, Minerals and Natural Resources Department
1220 South St. Francis Drive
Santa Fe, NM 87505



Pima Environmental Services, LLC

Liner Inspection Form

Company Name: Spur Energy

Site: Sherman 4 Fee 6H TB

Lat/Long: 32.68341,-104.38811

NMOCD Incident ID & Incident Date: nAPP2601229026 01/07/2026

2-Day Notification Sent: via OCD portal 01/27/2025

Inspection Date: 01/30/2026

Liner Type: Earthen w/liner Earthen no liner Polystar
 Steel w/poly liner Steel w/spray epoxy No Liner

Other: _____

Visualization	Yes	No	Comments
Is there a tear in the liner?		X	
Are there holes in the liner?		X	
Is the liner retaining any fluids?	X		Standing fluid is visible inside the lined containment due to power washing efforts.
Does the liner have integrity to contain a leak?	X		

Comments: _____

Inspector Name: Andrew Franco Inspector Signature: Andrew Franco



Appendix D

- Photographic Documentation

PHOTOGRAPHIC DOCUMENTATION

SITE NAME: Sherman 4 Fee 6H TB

Initial Site Assessment :



Site Information Sign.



Photo of liner taken during initial liner inspection facing northwest.



Photo of liner taken during initial liner inspection facing south.



Photo of liner taken during initial liner inspection facing southwest.



Photo of liner taken during initial liner inspection facing southeast.

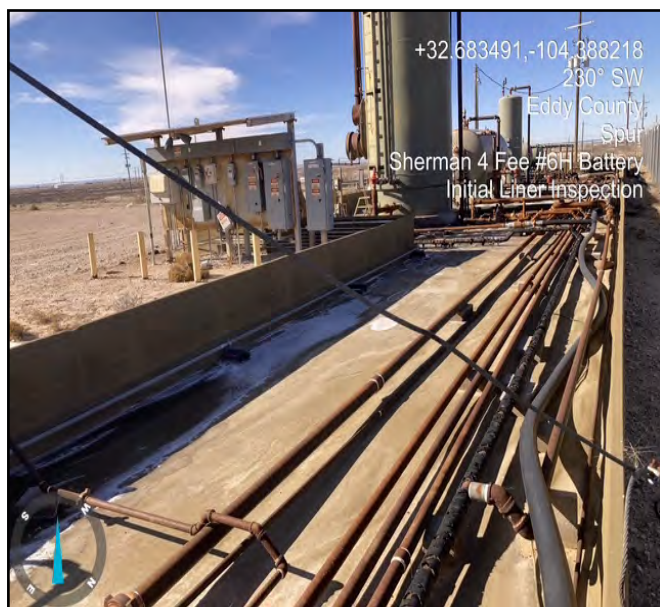


Photo of liner taken during initial liner inspection facing southwest.



Photo of liner taken during initial liner inspection facing southwest.



Photo of liner taken during initial liner inspection facing south.



Photo of liner taken during initial liner inspection facing north.



Photo of liner taken during initial liner inspection facing northeast.



Photo of liner taken during initial liner inspection facing east.



Photo of liner taken during initial liner inspection facing west.

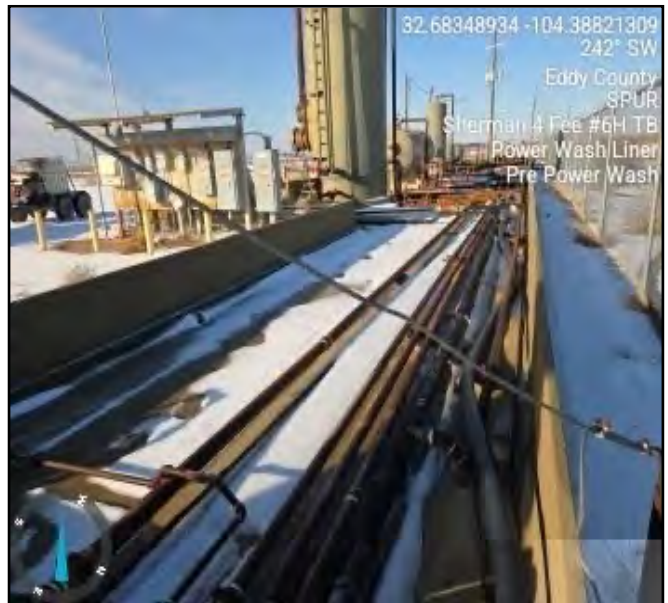
PHOTOGRAPHIC DOCUMENTATION

SITE NAME: Sherman 4 Fee 6H TB

Pre- Powerwash :



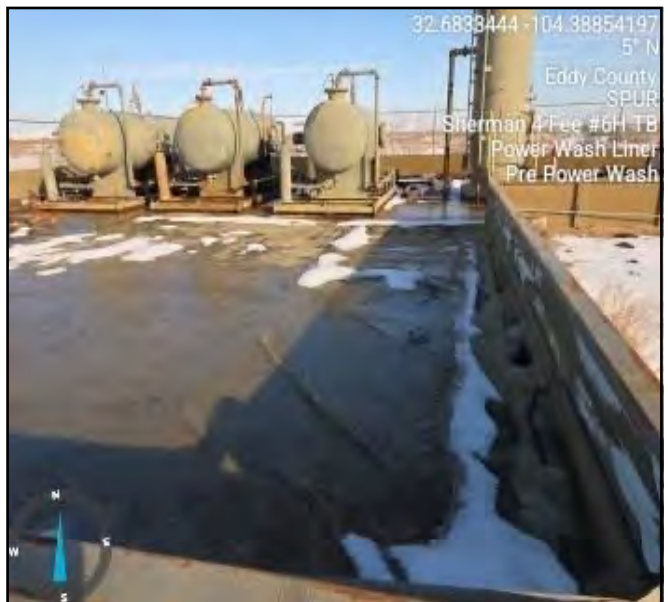
Photograph taken pre- powerwash process facing north.



Photograph taken pre- powerwash process facing southwest.



Photograph taken pre- powerwash process facing south.



Photograph taken pre- powerwash process facing north.

PHOTOGRAPHIC DOCUMENTATION

SITE NAME: Sherman 4 Fee 6H TB

Post- Powerwash :



Photo of location taken post power wash facing east.



Photo of location taken post power wash facing north.



Photo of location taken post power wash facing northeast.



Photo of location taken post power wash facing northwest.



Photo of location taken post power wash facing south.



Photo of location taken post power wash facing west.

PHOTOGRAPHIC DOCUMENTATION

SITE NAME: Sherman 4 Fee 6H TB

Liner Inspection :



Photograph taken during liner inspection facing west.



Photograph taken during liner inspection facing east.



Photograph taken during liner inspection facing northwest.



Photograph taken during liner inspection facing northeast.



Photograph taken during liner inspection facing northwest.



Photograph taken during liner inspection facing southeast.

Sante Fe Main Office
Phone: (505) 476-3441

General Information
Phone: (505) 629-6116

Online Phone Directory
<https://www.emnrd.nm.gov/ocd/contact-us>

State of New Mexico
Energy, Minerals and Natural Resources
Oil Conservation Division
1220 S. St Francis Dr.
Santa Fe, NM 87505

QUESTIONS

Action 566558

QUESTIONS

Operator: Spur Energy Partners LLC 9655 Katy Freeway Houston, TX 77024	OGRID: 328947
	Action Number: 566558
	Action Type: [C-141] Remediation Closure Request C-141 (C-141-v-Closure)

QUESTIONS

Prerequisites	
Incident ID (n#)	nAPP2601229026
Incident Name	NAPP2601229026 SHERMAN 4 FEE 6H TB @ N-04-19S-26E
Incident Type	Release Other
Incident Status	Remediation Closure Report Received

Location of Release Source	
<i>Please answer all the questions in this group.</i>	
Site Name	SHERMAN 4 FEE 6H TB
Date Release Discovered	01/07/2026
Surface Owner	Private

Incident Details	
<i>Please answer all the questions in this group.</i>	
Incident Type	Release Other
Did this release result in a fire or is the result of a fire	No
Did this release result in any injuries	No
Has this release reached or does it have a reasonable probability of reaching a watercourse	No
Has this release endangered or does it have a reasonable probability of endangering public health	No
Has this release substantially damaged or will it substantially damage property or the environment	No
Is this release of a volume that is or may with reasonable probability be detrimental to fresh water	No

Nature and Volume of Release	
<i>Material(s) released, please answer all that apply below. Any calculations or specific justifications for the volumes provided should be attached to the follow-up C-141 submission.</i>	
Crude Oil Released (bbls) Details	Cause: Corrosion Fitting Crude Oil Released: 2 BBL Recovered: 2 BBL Lost: 0 BBL.
Produced Water Released (bbls) Details	Cause: Corrosion Fitting Produced Water Released: 29 BBL Recovered: 29 BBL Lost: 0 BBL.
Is the concentration of chloride in the produced water >10,000 mg/l	Yes
Condensate Released (bbls) Details	Not answered.
Natural Gas Vented (Mcf) Details	Not answered.
Natural Gas Flared (Mcf) Details	Not answered.
Other Released Details	Not answered.
Are there additional details for the questions above (i.e. any answer containing Other, Specify, Unknown, and/or Fire, or any negative lost amounts)	HEATER CHECK VALVE DEVELOPED HOLE RELEASING OIL AND PW INTO LINED CONTAINMENT

Sante Fe Main Office
Phone: (505) 476-3441

General Information
Phone: (505) 629-6116

Online Phone Directory
<https://www.emnrd.nm.gov/ocd/contact-us>

State of New Mexico
Energy, Minerals and Natural Resources
Oil Conservation Division
1220 S. St Francis Dr.
Santa Fe, NM 87505

QUESTIONS, Page 2

Action 566558

QUESTIONS (continued)

Operator: Spur Energy Partners LLC 9655 Katy Freeway Houston, TX 77024	OGRID: 328947
	Action Number: 566558
	Action Type: [C-141] Remediation Closure Request C-141 (C-141-v-Closure)

QUESTIONS

Nature and Volume of Release (continued)	
Is this a gas only submission (i.e. only significant Mcf values reported)	No, according to supplied volumes this does not appear to be a "gas only" report.
Was this a major release as defined by Subsection A of 19.15.29.7 NMAC	Yes
Reasons why this would be considered a submission for a notification of a major release	From paragraph A. "Major release" determine using: (1) an unauthorized release of a volume, excluding gases, of 25 barrels or more.
<i>With the implementation of the 19.15.27 NMAC (05/25/2021), venting and/or flaring of natural gas (i.e. gas only) are to be submitted on the C-129 form.</i>	

Initial Response

The responsible party must undertake the following actions immediately unless they could create a safety hazard that would result in injury.

The source of the release has been stopped	True
The impacted area has been secured to protect human health and the environment	True
Released materials have been contained via the use of berms or dikes, absorbent pads, or other containment devices	True
All free liquids and recoverable materials have been removed and managed appropriately	True
If all the actions described above have not been undertaken, explain why	N/A

Per Paragraph (4) of Subsection B of 19.15.29.8 NMAC the responsible party may commence remediation immediately after discovery of a release. If remediation has begun, please prepare and attach a narrative of actions to date in the follow-up C-141 submission. If remedial efforts have been successfully completed or if the release occurred within a lined containment area (see Subparagraph (a) of Paragraph (5) of Subsection A of 19.15.29.11 NMAC), please prepare and attach all information needed for closure evaluation in the follow-up C-141 submission.

I hereby certify that the information given above is true and complete to the best of my knowledge and understand that pursuant to OCD rules and regulations all operators are required to report and/or file certain release notifications and perform corrective actions for releases which may endanger public health or the environment. The acceptance of a C-141 report by the OCD does not relieve the operator of liability should their operations have failed to adequately investigate and remediate contamination that pose a threat to groundwater, surface water, human health or the environment. In addition, OCD acceptance of a C-141 report does not relieve the operator of responsibility for compliance with any other federal, state, or local laws and/or regulations.

I hereby agree and sign off to the above statement	Name: Katherine Purvis Title: EHS Coordinator Email: katherine.purvis@spurenergy.com Date: 03/25/2026
--	--

Sante Fe Main Office
Phone: (505) 476-3441

General Information
Phone: (505) 629-6116

Online Phone Directory
<https://www.emnrd.nm.gov/ocd/contact-us>

State of New Mexico
Energy, Minerals and Natural Resources
Oil Conservation Division
1220 S. St Francis Dr.
Santa Fe, NM 87505

QUESTIONS, Page 3

Action 566558

QUESTIONS (continued)

Operator: Spur Energy Partners LLC 9655 Katy Freeway Houston, TX 77024	OGRID: 328947
	Action Number: 566558
	Action Type: [C-141] Remediation Closure Request C-141 (C-141-v-Closure)

QUESTIONS

Site Characterization

Please answer all the questions in this group (only required when seeking remediation plan approval and beyond). This information must be provided to the appropriate district office no later than 90 days after the release discovery date.

What is the shallowest depth to groundwater beneath the area affected by the release in feet below ground surface (ft bgs)	Between 75 and 100 (ft.)
What method was used to determine the depth to ground water	NM OSE iWaters Database Search
Did this release impact groundwater or surface water	No
What is the minimum distance, between the closest lateral extents of the release and the following surface areas:	
A continuously flowing watercourse or any other significant watercourse	Between 1000 (ft.) and ½ (mi.)
Any lakebed, sinkhole, or playa lake (measured from the ordinary high-water mark)	Between 1 and 5 (mi.)
An occupied permanent residence, school, hospital, institution, or church	Between 1 and 5 (mi.)
A spring or a private domestic fresh water well used by less than five households for domestic or stock watering purposes	Between 1000 (ft.) and ½ (mi.)
Any other fresh water well or spring	Between 1000 (ft.) and ½ (mi.)
Incorporated municipal boundaries or a defined municipal fresh water well field	Between 1 and 5 (mi.)
A wetland	Between 500 and 1000 (ft.)
A subsurface mine	Greater than 5 (mi.)
An (non-karst) unstable area	Greater than 5 (mi.)
Categorize the risk of this well / site being in a karst geology	Medium
A 100-year floodplain	Between 1000 (ft.) and ½ (mi.)
Did the release impact areas not on an exploration, development, production, or storage site	No

Remediation Plan

Please answer all the questions that apply or are indicated. This information must be provided to the appropriate district office no later than 90 days after the release discovery date.

Requesting a remediation plan approval with this submission	Yes
<i>Attach a comprehensive report demonstrating the lateral and vertical extents of soil contamination associated with the release have been determined, pursuant to 19.15.29.11 NMAC and 19.15.29.13 NMAC.</i>	
Have the lateral and vertical extents of contamination been fully delineated	Yes
Was this release entirely contained within a lined containment area	Yes
<i>Per Subsection B of 19.15.29.11 NMAC unless the site characterization report includes completed efforts at remediation, the report must include a proposed remediation plan in accordance with 19.15.29.12 NMAC, which includes the anticipated timelines for beginning and completing the remediation.</i>	
On what estimated date will the remediation commence	01/30/2026
On what date will (or did) the final sampling or liner inspection occur	01/30/2026
On what date will (or was) the remediation complete(d)	01/30/2026
What is the estimated surface area (in square feet) that will be remediated	4500
What is the estimated volume (in cubic yards) that will be remediated	0

These estimated dates and measurements are recognized to be the best guess or calculation at the time of submission and may (be) change(d) over time as more remediation efforts are completed. The OCD recognizes that proposed remediation measures may have to be minimally adjusted in accordance with the physical realities encountered during remediation. If the responsible party has any need to significantly deviate from the remediation plan proposed, then it should consult with the division to determine if another remediation plan submission is required.

Sante Fe Main Office
Phone: (505) 476-3441

General Information
Phone: (505) 629-6116

Online Phone Directory
<https://www.emnrd.nm.gov/ocd/contact-us>

State of New Mexico
Energy, Minerals and Natural Resources
Oil Conservation Division
1220 S. St Francis Dr.
Santa Fe, NM 87505

QUESTIONS, Page 4

Action 566558

QUESTIONS (continued)

Operator: Spur Energy Partners LLC 9655 Katy Freeway Houston, TX 77024	OGRID: 328947
	Action Number: 566558
	Action Type: [C-141] Remediation Closure Request C-141 (C-141-v-Closure)

QUESTIONS

Remediation Plan (continued)	
<i>Please answer all the questions that apply or are indicated. This information must be provided to the appropriate district office no later than 90 days after the release discovery date.</i>	
This remediation will (or is expected to) utilize the following processes to remediate / reduce contaminants:	
<i>(Select all answers below that apply.)</i>	
Is (or was) there affected material present needing to be removed	No
Is (or was) there a power wash of the lined containment area (to be) performed	Yes
OTHER (Non-listed remedial process)	Not answered.
<i>Per Subsection B of 19.15.29.11 NMAC unless the site characterization report includes completed efforts at remediation, the report must include a proposed remediation plan in accordance with 19.15.29.12 NMAC, which includes the anticipated timelines for beginning and completing the remediation.</i>	
I hereby certify that the information given above is true and complete to the best of my knowledge and understand that pursuant to OCD rules and regulations all operators are required to report and/or file certain release notifications and perform corrective actions for releases which may endanger public health or the environment. The acceptance of a C-141 report by the OCD does not relieve the operator of liability should their operations have failed to adequately investigate and remediate contamination that pose a threat to groundwater, surface water, human health or the environment. In addition, OCD acceptance of a C-141 report does not relieve the operator of responsibility for compliance with any other federal, state, or local laws and/or regulations.	
I hereby agree and sign off to the above statement	Name: Katherine Purvis Title: EHS Coordinator Email: katherine.purvis@spurenergy.com Date: 03/25/2026
<i>The OCD recognizes that proposed remediation measures may have to be minimally adjusted in accordance with the physical realities encountered during remediation. If the responsible party has any need to significantly deviate from the remediation plan proposed, then it should consult with the division to determine if another remediation plan submission is required.</i>	

Sante Fe Main Office
Phone: (505) 476-3441

General Information
Phone: (505) 629-6116

Online Phone Directory
<https://www.emnrd.nm.gov/ocd/contact-us>

State of New Mexico
Energy, Minerals and Natural Resources
Oil Conservation Division
1220 S. St Francis Dr.
Santa Fe, NM 87505

QUESTIONS, Page 6

Action 566558

QUESTIONS (continued)

Operator: Spur Energy Partners LLC 9655 Katy Freeway Houston, TX 77024	OGRID: 328947
	Action Number: 566558
	Action Type: [C-141] Remediation Closure Request C-141 (C-141-v-Closure)

QUESTIONS

Liner Inspection Information	
Last liner inspection notification (C-141L) recorded	547240
Liner inspection date pursuant to Subparagraph (a) of Paragraph (5) of Subsection A of 19.15.29.11 NMAC	01/30/2026
Was all the impacted materials removed from the liner	Yes
What was the liner inspection surface area in square feet	4500

Remediation Closure Request	
<i>Only answer the questions in this group if seeking remediation closure for this release because all remediation steps have been completed.</i>	
Requesting a remediation closure approval with this submission	Yes
Have the lateral and vertical extents of contamination been fully delineated	Yes
Was this release entirely contained within a lined containment area	Yes
What was the total surface area (in square feet) remediated	4500
What was the total volume (cubic yards) remediated	0
Summarize any additional remediation activities not included by answers (above)	The lined containment was power-washed, and all standing fluids were recovered using a vacuum truck. Following remediation, a liner inspection was conducted, confirming that the containment liner maintained its integrity.

The responsible party must attach information demonstrating they have complied with all applicable closure requirements and any conditions or directives of the OCD. This demonstration should be in the form of a comprehensive report (in .pdf format) including a scaled site map, sampling diagrams, relevant field notes, photographs of any excavation prior to backfilling, laboratory data including chain of custody documents of final sampling, and a narrative of the remedial activities. Refer to 19.15.29.12 NMAC.

I hereby certify that the information given above is true and complete to the best of my knowledge and understand that pursuant to OCD rules and regulations all operators are required to report and/or file certain release notifications and perform corrective actions for releases which may endanger public health or the environment. The acceptance of a C-141 report by the OCD does not relieve the operator of liability should their operations have failed to adequately investigate and remediate contamination that pose a threat to groundwater, surface water, human health or the environment. In addition, OCD acceptance of a C-141 report does not relieve the operator of responsibility for compliance with any other federal, state, or local laws and/or regulations. The responsible party acknowledges they must substantially restore, reclaim, and re-vegetate the impacted surface area to the conditions that existed prior to the release or their final land use in accordance with 19.15.29.13 NMAC including notification to the OCD when reclamation and re-vegetation are complete.

I hereby agree and sign off to the above statement	Name: Katherine Purvis Title: EHS Coordinator Email: katherine.purvis@spurenergy.com Date: 03/25/2026
--	---

Sante Fe Main Office
Phone: (505) 476-3441

General Information
Phone: (505) 629-6116

Online Phone Directory
<https://www.emnrd.nm.gov/ocd/contact-us>

State of New Mexico
Energy, Minerals and Natural Resources
Oil Conservation Division
1220 S. St Francis Dr.
Santa Fe, NM 87505

CONDITIONS

Action 566558

CONDITIONS

Operator: Spur Energy Partners LLC 9655 Katy Freeway Houston, TX 77024	OGRID: 328947
	Action Number: 566558
	Action Type: [C-141] Remediation Closure Request C-141 (C-141-v-Closure)

CONDITIONS

Created By	Condition	Condition Date
michael.buchanan	Liner inspection and closure approved. In future, ensure that photo documentation isn't pixelated or grainy as it is in multiple photographs on pages 36, 37 and 38 of the PDF report.	4/1/2026