



December 18, 2025

New Mexico Oil Conservation Division

New Mexico Energy, Minerals, and Natural Resources Department
1220 South St. Francis Drive
Santa Fe, New Mexico 87505

**Re: Reclamation Report
Sterling Silver 33 Fed 3 CTB
Incident Number NAPP2435236546
Eddy County, New Mexico**

To Whom It May Concern:

Ensolum, LLC (Ensolum), on behalf of Oxy USA Inc. (Oxy), has prepared the following *Reclamation Report* for the Sterling Silver 33 Fed 3 CTB (Site). This *Reclamation Report* documents the Site history, reclamation activities completed to date, and proposes a vegetation monitoring plan.

BACKGROUND

The Site is located in Unit E, Section 33, Township 23 South, Range 31 East, in Eddy County, New Mexico (32.2623719°, -103.791203°) and is associated with oil and gas exploration and production operations on Federal Land managed by the Bureau of Land Management (BLM).

On December 13, 2024, a flowline failed due to human error, resulting in the release of 6 barrels (bbls) of produced water into the surrounding pasture. No released fluids were recovered. Oxy reported the release to the New Mexico Oil Conservation Division (NMOCD) on a Release Notification Form C-141 (Form C-141) on December 17, 2024. The release was assigned Incident Number NAPP2435236546.

Delineation and excavation of impacted soil was completed at the Site during January and February 2025. The final excavation extent measured approximately 1,721 square feet. A total of approximately 400 cubic yards of impacted soil were removed during the excavation activities. Based on the delineation and excavation soil sample analytical results, a *Closure Request* was submitted to the NMOCD on April 3, 2025. The NMOCD approved the *Closure Request* on April 4, 2025.

Additional details regarding the release, Site Characterization, delineation and excavation activities, and soil sample analytical results can be referenced in the approved *Closure Request*, included as an attachment to this report. Remediation of the release was completed in accordance with Title 19, Chapter 15, Part 29 (19.15.29) of the New Mexico Administrative Code (NMAC).

RECLAMATION ACTIVITIES

Upon completion of excavation activities and receipt of final laboratory analytical results, the excavation was backfilled with locally procured soil and the disturbed area was restored to its original condition. The

Oxy USA Inc.
 Reclamation Report
 Sterling Silver 33 Fed 3 CTB

excavation extent and reclamation area are shown on the attached Figure 1. Photographic documentation of the backfilled excavation is included as Appendix A.

As documented in the approved *Closure Request*, one representative 5-point composite sample (Twin Wells Ranch Buck Jackson Pit) was collected from the backfill material on September 9, 2024. The backfill soil sample was transported under strict chain-of-custody procedures to Cardinal Laboratories in Hobbs, New Mexico, for analysis of the following constituents of concern (COCs): Benzene, toluene, ethylbenzene, and total xylenes (BTEX) following United States Environmental Protection Agency (EPA) Method 8021B; total petroleum hydrocarbons (TPH)—gasoline range organics (GRO), TPH-diesel range organics (DRO), and TPH-oil range organics (ORO) following EPA Method 8015M/D; and chloride following Standard Method 4500.

Laboratory analytical results for the backfill soil sample confirmed compliance with NMOCD requirements for the reclaimed area to contain non-waste containing, uncontaminated, earthen material with chloride concentrations less than 600 milligrams per kilogram (mg/kg) and TPH concentrations less than 100 mg/kg. The laboratory analytical results were summarized on Table 2 and the laboratory analytical report is included in Appendix C of the approved *Closure Request*, included as Appendix B.

The reclaimed pasture area was seeded on August 4, 2025, with the below BLM seed mixture #2 for sandy sites. The seed was applied with a broadcast seed spreader at double the rate specified in pounds of pure live seed (PLS) per acre to account for the application method.

Species/Cultivar	PLS/Acre
Sand dropseed (<i>Sporobolus cryptandrus</i>)	1.0
Sand love grass (<i>Eragrostis trichodes</i>)	1.0
Plains bristlegrass (<i>Setaria macrostachya</i>)	2.0

Following broadcast seeding, the area was harrowed to cover the seed. Photographs of the backfilled excavation and seeding of the reclaimed area are provided in Appendix A.

VEGETATION MONITORING

The Site will be monitored for vegetation growth to ensure that reclamation activities were successful. Focus for this phase will be to prevent erosion and Site degradation, and to monitor for and treat invasive and noxious weed species.

- Annual inspections will take place at the location to monitor revegetation progress.
- If necessary, an additional application of the BLM seed mix will be applied.
- Noxious and invasive weeds will be identified and treated by licensed contracted herbicide applicator or mechanically removed.

A *Revegetation Report* will be submitted to the NMOCD and BLM once vegetation growth in the reclaimed pasture area has uniform vegetative cover that reflects a life-form ratio of plus or minus 50 percent (%) of pre-disturbance levels and a total percent plant cover of at least 70% of pre-disturbance levels, excluding noxious weeds, per NMAC 19.15.29.13 D.(3).

RECLAMATION APPROVAL REQUEST

Based on the reclamation activities completed to date and proposed vegetation monitoring plan described above, Oxy respectfully requests approval of this *Reclamation Report* and a status update to *Reclamation Report Approved, Pending submission of Re-Vegetation Report* for Incident Number NAPP2435236546.

Oxy USA Inc.
Reclamation Report
Sterling Silver 33 Fed 3 CTB

If you have any questions or comments, please contact Ms. Aimee Cole at (720) 384-7365 or acole@ensolum.com.

Sincerely,
Ensolum, LLC



Hadlie Green
Project Geologist



Aimee Cole
Senior Managing Scientist

cc: Daniel Sparks, Oxy
Jessica Kent, Oxy
Bureau of Land Management



Appendices:

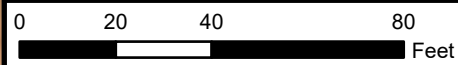
Figure 1 Site Reclamation Map
Appendix A Photographic Log
Appendix B April 3, 2025, *Closure Request*



FIGURES

Legend

-  Excavation Extent
-  Reclamation Extent



Sources: Environmental Systems Research Institute (ESRI)



Site Reclamation Map

Oxy USA Inc.
 Sterling Silver 33 Fed 3 CTB
 Incident Number: NAPP2435236546
 Unit E, Section 33, T 23S, R 31E
 Eddy County, New Mexico

FIGURE

1



APPENDIX A
Photographic Log



Photographic Log
Oxy USA Inc.
Sterling Silver 33 Fed 3 CTB
Incident Number NAPP2435236546



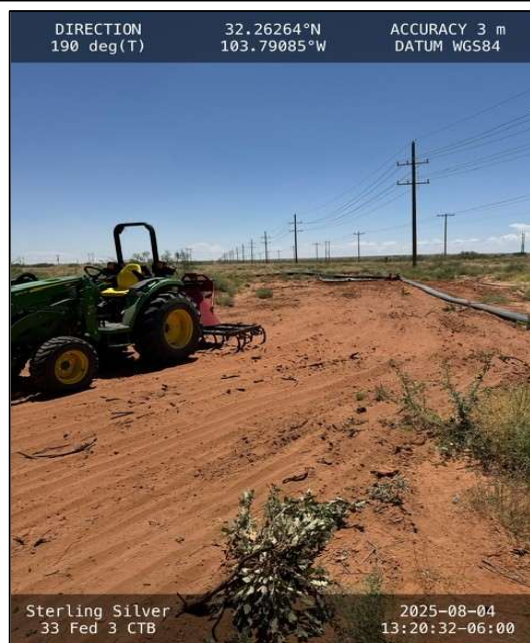
Photograph: 1 Date: 8/4/2025
Description: Seed tag
View: Southwest



Photograph: 2 Date: 8/4/2025
Description: Reseeding activities
View: North



Photograph: 3 Date: 8/4/2025
Description: Reseeding activities
View: South



Photograph: 4 Date: 8/4/2025
Description: Reseeding activities
View: Northeast



APPENDIX B

April 3, 2025, *Closure Request*



April 3, 2025

New Mexico Oil Conservation Division

New Mexico Energy, Minerals, and Natural Resources Department
1220 South St. Francis Drive
Santa Fe, New Mexico 87505

**Re: Closure Request
Sterling Silver 33 Fed 3 CTB
Incident Number NAPP2435236546
Eddy County, New Mexico**

To Whom It May Concern:

Ensolum, LLC (Ensolum), on behalf of Oxy USA Inc. (Oxy), has prepared this *Closure Request* to document assessment, delineation, excavation, and soil sampling activities performed at the Sterling Silver 33 Fed 3 CTB (Site). The purpose of the Site assessment, delineation, excavation, and soil sampling activities was to assess for the presence or absence of impacts to soil resulting from a produced water release at the Site. Based on field observations, field screening activities, and soil sample laboratory analytical results, Oxy is submitting this *Closure Request*, describing Site assessment delineation, and excavation activities that have occurred and requesting closure for Incident Number NAPP2435236546.

SITE DESCRIPTION AND RELEASE SUMMARY

The Site is located in Unit E, Section 33, Township 23 South, Range 31 East, in Eddy County, New Mexico (32.2623719°, -103.791203°) and is associated with oil and gas exploration and production operations on Federal Land managed by the Bureau of Land Management (BLM).

On December 13, 2024, a flowline failed due to human error, resulting in the release of approximately 6 barrels (bbls) of produced water in the pasture. Oxy reported the release to the New Mexico Oil Conservation Division (NMOCD) on a Release Notification Form C-141 (Form C-141) on December 17, 2024. The release was subsequently assigned Incident Number NAPP2435236546.

SITE CHARACTERIZATION AND CLOSURE CRITERIA

The Site was characterized to assess the applicability of Table I, Closure Criteria for Soils Impacted by a Release, of Title 19, Chapter 15, Part 29 (19.15.29) of the New Mexico Administrative Code (NMAC). Results from the characterization are summarized below and detailed in the NMOCD permitting portal Form C-141 Site Characterization section. The Site Closure Criteria is identified on Figure 4.

Depth to groundwater at the Site is reasonably estimated to be greater than 100 feet below ground surface (bgs) based on the nearest groundwater well data. The closest permitted groundwater well with depth to groundwater data is New Mexico Office of the State Engineer documents well C-02783, located approximately 1.06 miles south of the Site. The depth to water was most recently measured on October 18, 2010 and indicated to be greater than 708 feet bgs. The associated well records are included in Appendix A.

Oxy USA Inc.
Closure Request
Sterling Silver 33 Fed 3 CTB

The closest continuously flowing or significant watercourse to the Site is a dry wash, located approximately 5,317 feet southwest of the Site. The Site is greater than 200 feet from a lakebed, sinkhole, or playa lake and greater than 300 feet from an occupied residence, school, hospital, institution, church, or wetland. The Site is greater than 1,000 feet to a freshwater well or spring and is not within a 100-year floodplain or overlying a subsurface mine. The Site is not underlain by unstable geology (low potential karst designation area). Closure criteria is identified on Figure 4.

Based on the results of the Site Characterization, the following NMOCD Table I Closure Criteria (Closure Criteria) apply:

- Benzene: 10 milligrams per kilogram (mg/kg)
- Benzene, toluene, ethylbenzene, and total xylenes (BTEX): 50 mg/kg
- Total petroleum hydrocarbons (TPH): 100 mg/kg
- Chloride: 600 mg/kg

DELINEATION ACTIVITIES AND LABORATORY ANALYTICAL RESULTS

On January 7, 2025, Ensolum personnel conducted Site delineation activities to evaluate the release extent based on information provided on the Form C-141 and visual observations. Four soil samples (SS01 through SS04) were advanced via hand auger within the release extent to assess the presence or absence of impacted soil. The soil samples were advanced to a depth of 1 foot bgs, and samples were collected at depths ranging from 0.25 feet to 1 foot bgs. Additionally, six delineation soil samples (DS01 through DS06) were collected outside the release area, at a depth of approximately 0.25 feet bgs to confirm the lateral extent of the release. The delineation soil samples were field screened for volatile organic compounds (VOCs) utilizing a calibrated photoionization detector (PID) and chloride using Hach® chloride QuanTab® test strips.

Field screening results for soil samples SS01 through SS04 indicated Chlorides were not compliant with the Site Closure Criteria and the Site was not vertically delineated to the most stringent Table I Closure Criteria. Therefore, soil samples for SS01 through SS04 were not submitted for analysis.

The six delineation soil samples (DS01 through DS06) were placed directly into pre-cleaned glass jars, labeled with the location, date, time, sampler name, method of analysis, and immediately placed on ice. The soil samples were transported under strict chain-of-custody procedures to Cardinal Laboratories (Cardinal) in Hobbs, New Mexico, for analysis of the following chemicals of concern (COCs): BTEX following United States Environmental Protection Agency (EPA) Method 8021B; TPH-gasoline range organics (GRO), TPH-diesel range organics (DRO), and TPH-oil range organics (ORO) following EPA Method 8015M/D; and chloride following EPA Method SM4500Cl-B.

Laboratory analytical results for delineation soil samples DS01 through DS06 indicated all COCs were compliant with the most stringent Table I Closure Criteria and successfully defined the lateral extent of the release. Field screening results for the soil samples are summarized in the attached Table A.

COMPOSITE SAMPLING, EXCAVATION ACTIVITIES, AND LABORATORY ANALYTICAL RESULTS

Between January 7, 2025 and February 18, 2025, excavation activities were conducted, and Ensolum personnel returned to the Site to collect 5-point composite soil samples every 200 square feet from the release extent. The 5-point composite samples were collected by placing five equivalent aliquots of soil into a 1-gallon, resealable plastic bag and homogenizing the samples by thoroughly mixing. Eight composite soil samples (CS01 through CS08) were collected from the excavation floor at depths ranging between 3 feet and 6 feet bgs to confirm the absence of impacted soil. The soil samples were handled

Oxy USA Inc.
Closure Request
Sterling Silver 33 Fed 3 CTB

and analyzed following the same procedures as described above. Six sidewall soil samples (SW01 through SW06) were also collected from the sidewalls of the excavations at depths ranging from the ground surface to 6 feet bgs. The soil samples were handled and analyzed following the same procedures described above. The soil sample locations were mapped utilizing a handheld Global Positioning System (GPS) unit and are depicted on Figure 3. Photographic documentation was completed during the Site visits and a photographic log is included as Appendix B.

The soil samples were placed directly into pre-cleaned glass jars, labeled with the location, date, time, sampler name, method of analysis, and immediately placed on ice. The soil samples were transported under strict chain-of-custody procedures to Cardinal in Hobbs, New Mexico, for analysis of the following COCs: BTEX following EPA Method 8021B; TPH-GRO, TPH-DRO, TPH-ORO following EPA Method 8015M/D; and chloride following EPA Method SM4500CI-B.

Laboratory analytical results for excavation floor soil samples CS01 through CS08 and excavation sidewall soil samples SW01 through SW06 indicated all COC concentrations were compliant with the most stringent Closure Criteria. The laboratory analytical results are summarized in the attached Table 1 and the complete laboratory analytical reports are included in Appendix C.

The excavation area measured approximately 1,721 square feet. A total of 400 cubic yards of impacted soil were removed during the excavation activities. The impacted soil was transported and properly disposed of at the Lea Land Caliche Pit in Lea County, New Mexico.

Subsequent to the results of the final confirmation soil sampling, the excavated areas were backfilled with clean fill material and contoured to the original surrounding grade. One representative 5-point composite soil sample (Twin Wells Ranch Buck Jackson Pit) was collected from the backfill material prior to use at the Site. Laboratory analytical results for the backfill soil sample confirmed compliance with the NMOCD requirements for the reclaimed area to be non-waste containing, uncontaminated, earthen material with chloride concentrations less than 600 mg/kg and TPH concentrations less than 100 mg/kg. The laboratory analytical results are summarized in the attached Table 2 and the complete laboratory analytical report is included in Appendix C.

CLOSURE REQUEST

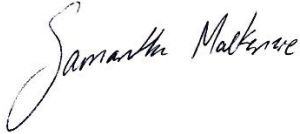
Site assessment and remediation activities were conducted at the Site to address the December 13, 2024 produced water release. Laboratory analytical results for the assessment and excavation activities indicated all COC concentrations were compliant with the Site Closure Criteria. Based on the laboratory analytical results, no further remediation is required at this time.

Depth to groundwater was determined to be greater than 100 feet bgs, but outside 0.5 miles of the Site and no other sensitive receptors were identified near the release extent. Oxy believes the remedial actions completed are protective of human health, the environment, and groundwater. As such, Oxy respectfully requests closure for Incident Number NAPP2435236546.

Oxy USA Inc.
Closure Request
Sterling Silver 33 Fed 3 CTB

If you have any questions or comments, please contact Mr. Beaux Jennings at (210) 219-8858 or bjennings@ensolum.com.

Sincerely,
Ensolum, LLC



Samantha MacKenzie
Staff Geologist

Beaux Jennings
Associate Principal

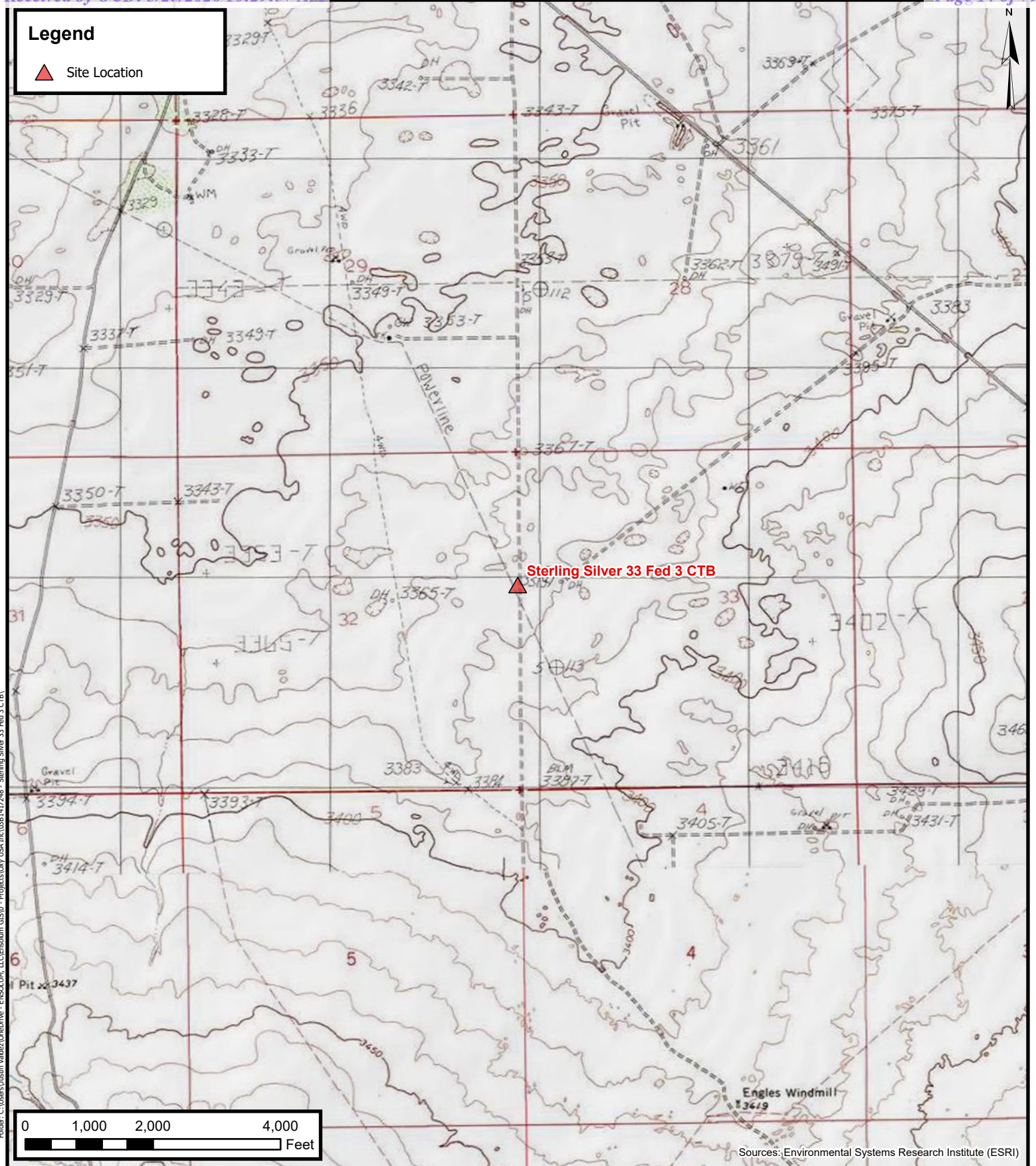
cc: Wade Dittrich, Oxy USA Inc.
Bureau of Land Management Office

Appendices:

- Figure 1 Topographic Map
- Figure 2 Site Vicinity Map
- Figure 3 Site Map
- Figure 4 Closure Criteria Map
- Figure 5 Twin Wells Ranch Buck Jackson Pit
- Table A Field Screening Soil Sample Results
- Table 1 Soil Sample Analytical Results
- Table 2 Backfill Soil Sample Analytical Results
- Appendix A Referenced Well Records
- Appendix B Photographic Log
- Appendix C Laboratory Analytical Reports & Chain-of-Custody Documentation
- Appendix D NMOCD Correspondence



FIGURES



Folder: C:\Users\Justin Velazquez\OneDrive - ENSOLUM, LLC\Documents\GIS\0 - Projects\Oxy USA, Inc\03B1417248 - Sterling Silver 33 Fed 3 CTB



Topographic Map

Oxy USA Inc.
 Sterling Silver 33 Fed 3 CTB
 Project Number: 03B1417248
 32.2623719, -103.791203
 Eddy County, New Mexico

FIGURE

1

Legend

▲ Site Location



Folder: C:\Users\Justin Velazquez\OneDrive - ENSOLUM, LLC\Ensolium GIS\0 - Projects\Oxy USA, Inc\03B1417248 - Sterling Silver 33 Fed 3 CTB\

0 500 1,000 2,000 Feet

Sources: Environmental Systems Research Institute (ESRI)





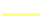



Site Vicinity Map

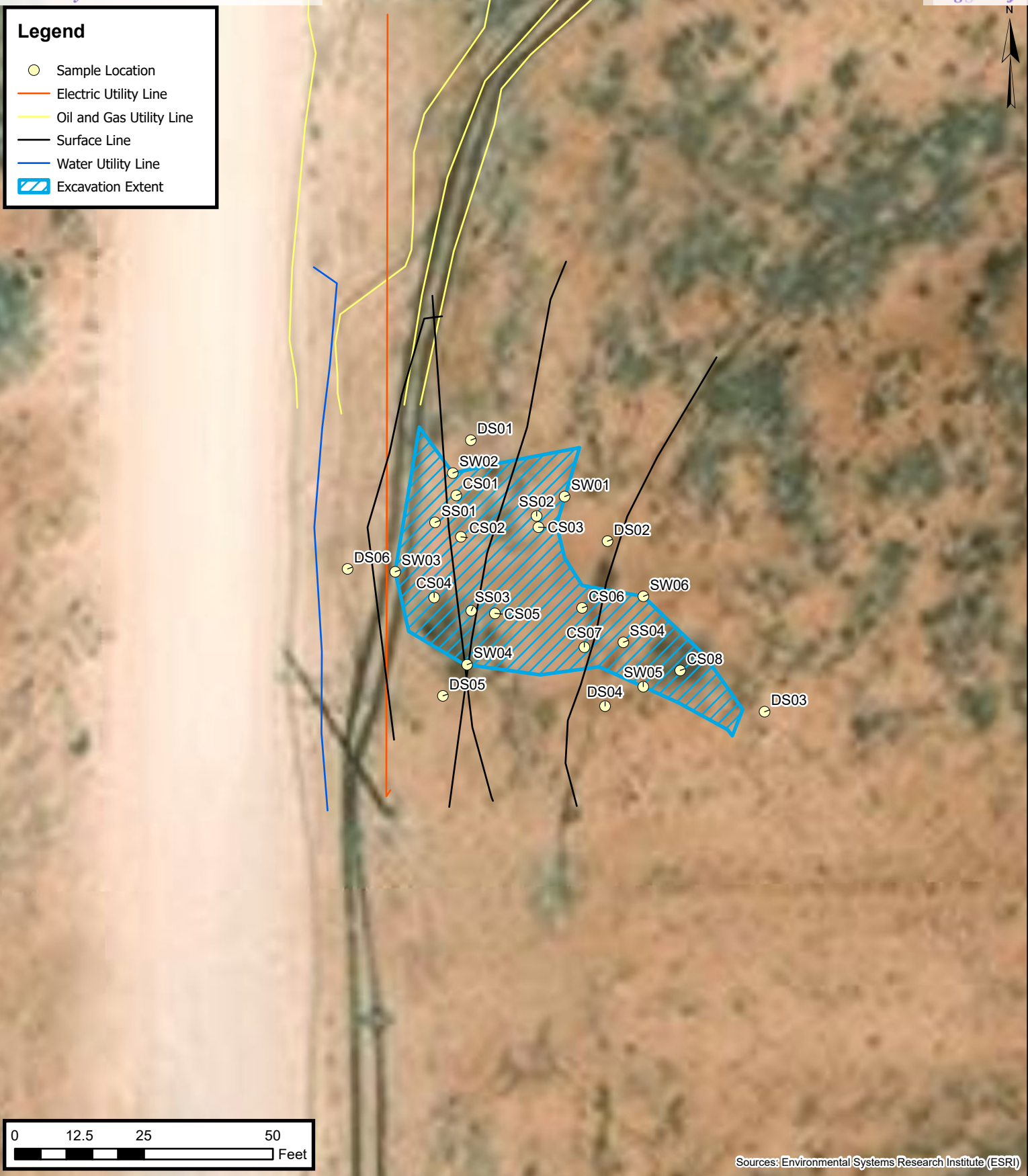
Oxy USA Inc.
Sterling Silver 33 Fed 3 CTB
Project Number: 03B1417248
32.2623719, -103.791203
Eddy County, New Mexico

FIGURE

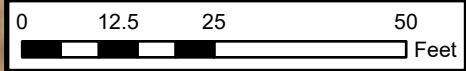
2

Legend

-  Sample Location
-  Electric Utility Line
-  Oil and Gas Utility Line
-  Surface Line
-  Water Utility Line
-  Excavation Extent



Folder: C:\Users\Justin Velez\OneDrive - ENSOLUM, LLC\Ensolum GIS\0 - Projects\Oxy USA, Inc\03B1417248 - Sterling Silver 33 Fed 3 CTB\



Sources: Environmental Systems Research Institute (ESRI)



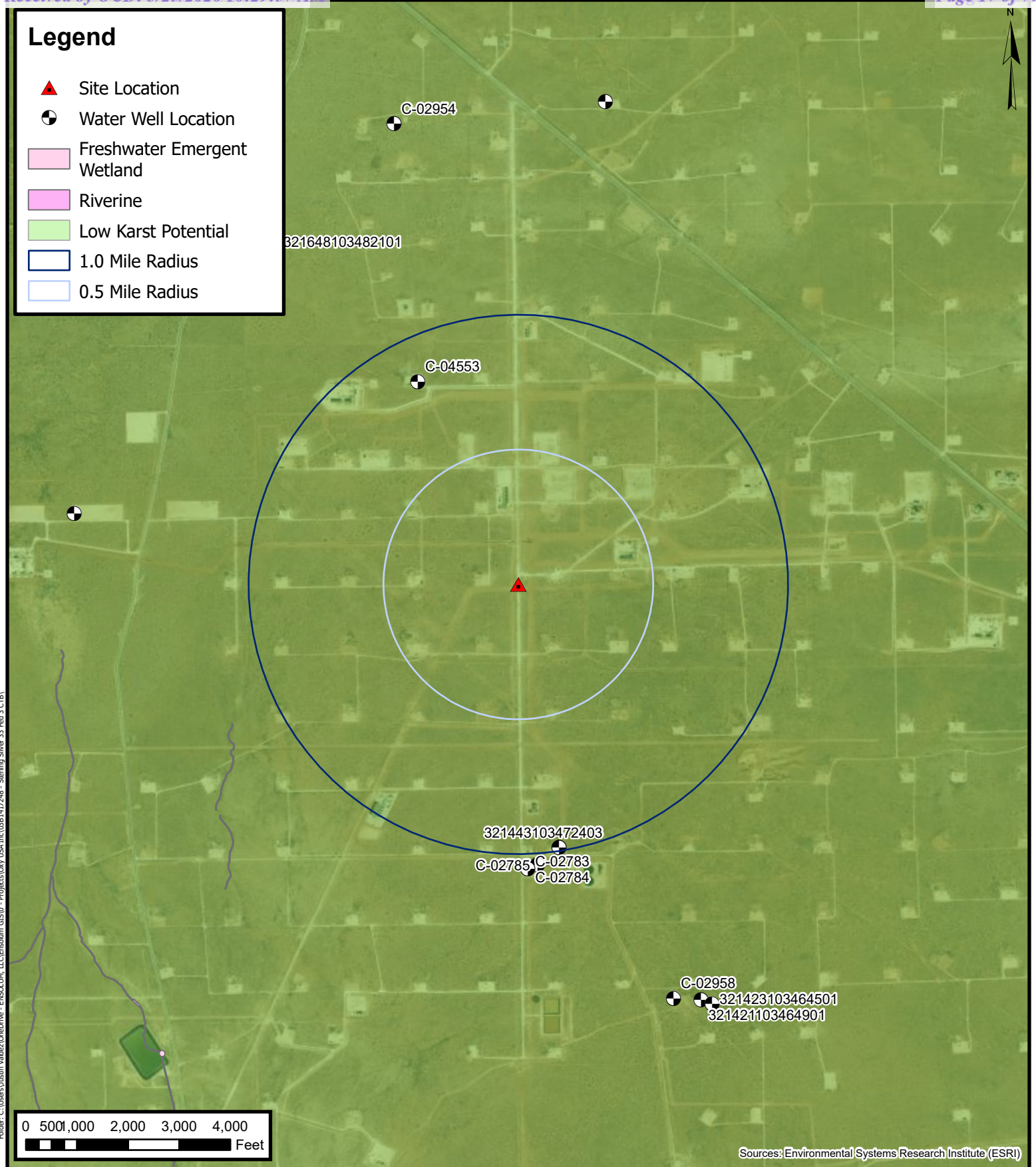
ENSOLUM
Environmental, Engineering and
Hydrogeologic Consultants

Site Map
Oxy USA Inc.
Sterling Silver 33 Fed 3 CTB
Project Number: 03B1417248
32.2623719, -103.791203
Eddy County, New Mexico

FIGURE
3

Legend

- ▲ Site Location
- Water Well Location
- Freshwater Emergent Wetland
- Riverine
- Low Karst Potential
- 1.0 Mile Radius
- 0.5 Mile Radius



Folder: C:\Users\Justin Velazquez\OneDrive - ENSOLUM, LLC\Ensolum GIS\0 - Projects\Oxy USA, Inc\03B1417248 - Sterling Silver 33 Fed 3 CTB\

Sources: Environmental Systems Research Institute (ESRI)



Closure Criteria Map

Oxy USA Inc.
Sterling Silver 33 Fed 3 CTB
Project Number: 03B1417248
32.2623719, -103.791203
Eddy County, New Mexico

FIGURE

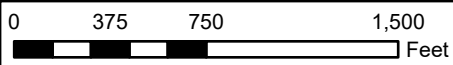
4

Legend

- Composite Soil Sample Location



Twin Wells Ranch Buck
Jackson Pit Composite
Soil Sample Location



Sources: Environmental Systems Research Institute (ESRI)



Site Map

Twin Wells Ranch Buck Jackson Pit
32.228694, 32.228694
Eddy County, New Mexico

FIGURE

1

Folder: C:\Users\Justin Velazquez\OneDrive - ENSOLUM, LLC\ensolum GIS\0 - Projects\NA\038 - Twin Wells Ranch Buck Jackson Pit



TABLES



TABLE A
FIELD SCREENING SOIL SAMPLE RESULTS
 Sterling Silver 33 Federal 3 CTB
 Oxy USA, Inc.
 Eddy County, New Mexico
 Ensolum Project No. 03B1417248

Sample Designation	Date	Depth (feet bgs)	PID Field Screening Results (ppm)	Chloride Strips Field Screening Results (mg/kg)
New Mexico Oil Conservation Division Closure Criteria for Soils Impacted by a Release			NA	Chloride 600 mg/kg
Composite Soil Sample Analytical Results				
SS01	01/07/2025	0.25	4.1	9,475
	01/07/2025	1	0.1	5,017
SS02	01/07/2025	0.25	2.0	2,161
	01/07/2025	1	0.2	4,245
SS03	01/07/2025	0.25	30.1	10,264
	01/07/2025	1	0.7	6,910
SS04	01/07/2025	0.25	77.3	6,910
	01/07/2025	1	0.6	3,892
DS01	01/07/2025	0.25	0.0	ND
DS02	01/07/2025	0.25	0.1	ND
DS03	01/07/2025	0.25	0.0	ND
DS04	01/07/2025	0.25	0.0	ND
DS05	01/07/2025	0.25	0.1	ND
DS06	01/07/2025	0.25	0.0	ND

Concentrations in **bold** and yellow exceed the New Mexico Oil Conservation Division Closure Criteria for Soils Impacted by a Release (≤ 50 feet)

represents samples that have been excavated

bgs: below ground surface

mg/kg: milligrams per kilogram

ppm: parts per million

ND: Non Detect


NA: Not Applicable



TABLE 1 SOIL SAMPLE ANALYTICAL RESULTS Sterling Silver 33 Federal 3 CTB Oxy USA, Inc. Eddy County, New Mexico Ensolum Project No. 03B1417248									
Sample Designation	Date	Depth (feet bgs)	Benzene (mg/kg)	Total BTEX (mg/kg)	TPH GRO (mg/kg)	TPH DRO (mg/kg)	TPH ORO (mg/kg)	Total TPH (mg/kg)	Chloride (mg/kg)
NMOCD Table I Closure Criteria (NMAC 19.15.29)			10	50	NE	NE	NE	100	600
Delineation Soil Sample Analytical Results									
DS01	1/7/2025	0.25	<0.050	<0.300	<10.0	<10.0	<10.0	<10.0	16.0
DS02	1/7/2025	0.25	<0.050	<0.300	<10.0	<10.0	<10.0	<10.0	<16.0
DS03	1/7/2025	0.25	<0.050	<0.300	<10.0	<10.0	<10.0	<10.0	16.0
DS04	1/7/2025	0.25	<0.050	<0.300	<10.0	<10.0	<10.0	<10.0	16.0
DS05	1/7/2025	0.25	<0.050	<0.300	<10.0	<10.0	<10.0	<10.0	32.0
DS06	1/7/2025	0.25	<0.050	<0.300	<10.0	<10.0	<10.0	<10.0	<16.0
Confirmation Soil Sample Analytical Results									
CS01	2/17/2025	3	<0.050	<0.300	<10.0	<10.0	<10.0	<10.0	80.0
CS02	2/17/2025	5	<0.050	<0.300	<10.0	<10.0	<10.0	<10.0	176
CS03	2/17/2025	6	<0.050	<0.300	<10.0	<10.0	<10.0	<10.0	64.0
CS04	2/17/2025	3	<0.050	<0.300	<10.0	<10.0	<10.0	<10.0	32.0
CS05	2/17/2025	3	<0.050	<0.300	<10.0	<10.0	<10.0	<10.0	32.0
CS06	2/17/2025	3	<0.050	<0.300	<10.0	<10.0	<10.0	<10.0	16.0
CS07	2/17/2025	6	<0.050	<0.300	<10.0	<10.0	<10.0	<10.0	16.0
CS08	2/17/2025	3	<0.050	<0.300	<10.0	<10.0	<10.0	<10.0	16.0
Delineation Sidewall Soil Sample Analytical Results									
SW01	2/18/2025	0-6	<0.050	<0.300	<10.0	<10.0	<10.0	<10.0	96.0
SW02	2/18/2025	0-5	<0.050	<0.300	<10.0	<10.0	<10.0	<10.0	80.0
SW03	2/18/2025	0-3	<0.050	<0.300	<10.0	<10.0	<10.0	<10.0	80.0
SW04	2/18/2025	0-3	<0.050	<0.300	<10.0	<10.0	<10.0	<10.0	96.0
SW05	2/18/2025	0-1	<0.050	<0.300	<10.0	<10.0	<10.0	<10.0	16.0
SW06	2/18/2025	0-1	<0.050	<0.300	<10.0	<10.0	<10.0	<10.0	64.0

Notes:

Concentrations in bold and yellow exceed the New Mexico Oil Conservation Division Closure Criteria for Soils Impacted by a Release

 represents samples that have been excavated

mg/kg: milligrams per kilogram

NMOCD: New Mexico Oil Conservation Division

NMAC: New Mexico Administrative Code

BTEX: Benzene, Toluene, Ethylbenzene, and Xylenes

GRO: Gasoline Range Organics

DRO: Diesel Range Organics

ORO: Oil Range Organics

TPH: Total Petroleum Hydrocarbon



TABLE 2
BACKFILL SOIL SAMPLE ANALYTICAL RESULTS
 Twin Wells Ranch Buck Jackson Pit
 Oxy USA, Inc.
 Lea County, New Mexico
 Ensolum Project No. NA

Sample Designation	Date	Depth (feet bgs)	Benzene (mg/kg)	Toluene (mg/kg)	Ethylbenzene (mg/kg)	Total Xylenes (mg/kg)	Total BTEX (mg/kg)	TPH GRO (mg/kg)	TPH DRO (mg/kg)	TPH MRO (mg/kg)	Total TPH (GRO+DRO+MRO) (mg/kg)	Chloride (mg/kg)
New Mexico Oil Conservation Division Closure Criteria for Soils Impacted by a Release (≤ 50 feet)			10	NE	NE	NE	50	NE	NE	NE	100	600
Composite Backfill Soil Sample Analytical Result												
Twin Wells Ranch Buck Jackson Pit	09/09/2024	NA	<0.050	<0.050	<0.050	<0.150	<0.300	<10.0	<10.0	<10.0	<10.0	<16.0

bgs: below ground surface
 mg/kg: milligrams per kilogram
 NA: Not Applicable
 NE: Not Established
 BTEX: Benzene, Toluene, Ethylbenzene, and Xylenes
 GRO: Gasoline Range Organics
 DRO: Diesel Range Organics
 MRO: Motor Oil/Lube Oil Range Organics
 TPH: Total Petroleum Hydrocarbon




APPENDIX A

Referenced Well Records

Point of Diversion Summary

quarters are 1=NW 2=NE 3=SW 4=SE
 quarters are smallest to largest

NAD83 UTM in meters

Well Tag	POD Nbr	Q64	Q16	Q4	Sec	Tws	Rng	X	Y	Map
	C 02783	SW	SW	NW	04	24S	31E	613911.2	3568461.9	

* UTM location was derived from PLSS - see Help

Driller License:

Driller Company:

Driller Name:

SANDIA NATIONAL LABS/USGS

Drill Start Date:

Drill Finish Date:

1979-12-31

Plug Date:

2010-10-05

Log File Date:

2010-10-18

PCW Rcv Date:

Source:

Shallow

Pump Type:

Pipe Discharge Size:

Estimated Yield:

Casing Size:

7.00

Depth Well:

708

Depth Water:

The data is furnished by the NMOSE/ISC and is accepted by the recipient with the expressed understanding that the OSE/ISC make no warranties, expressed or implied, concerning the accuracy, completeness, reliability, usability, or suitability for any particular purpose of the data.

12/19/24 12:48 PM MST

Point of Diversion Summary

©2024 New Mexico Office of the State Engineer, All Rights Reserved. | [Disclaimer](#) | [Contact Us](#) | [Help](#) | [Home](#) |



APPENDIX B
Photographic Log



APPENDIX C

Laboratory Analytical Reports & Chain of Custody Documentation



PHONE (575) 393-2326 ° 101 E. MARLAND ° HOBBS, NM 88240

January 13, 2025

SAMANTHA MACKENZIE
ENSOLUM, LLC
705 W WADLEY AVE.
MIDLAND, TX 79705

RE: STERLING SILVER 33 FED 3 CTB

Enclosed are the results of analyses for samples received by the laboratory on 01/07/25 16:03.

Cardinal Laboratories is accredited through Texas NELAP under certificate number TX-C24-00112. Accreditation applies to drinking water, non-potable water and solid and chemical materials. All accredited analytes are denoted by an asterisk (*). For a complete list of accredited analytes and matrices visit the TCEQ website at www.tceq.texas.gov/field/qa/lab_accred_certif.html.

Cardinal Laboratories is accredited through the State of Colorado Department of Public Health and Environment for:

Method EPA 552.2	Haloacetic Acids (HAA-5)
Method EPA 524.2	Total Trihalomethanes (TTHM)
Method EPA 524.4	Regulated VOCs (V1, V2, V3)

Accreditation applies to public drinking water matrices.

This report meets NELAP requirements and is made up of a cover page, analytical results, and a copy of the original chain-of-custody. If you have any questions concerning this report, please feel free to contact me.

Sincerely,

A handwritten signature in black ink that reads "Celey D. Keene". The signature is written in a cursive, flowing style.

Celey D. Keene
Lab Director/Quality Manager



PHONE (575) 393-2326 ° 101 E. MARLAND ° HOBBS, NM 88240

Analytical Results For:

ENSOLUM, LLC
 SAMANTHA MACKENZIE
 705 W WADLEY AVE.
 MIDLAND TX, 79705
 Fax To:

Received:	01/07/2025	Sampling Date:	01/07/2025
Reported:	01/13/2025	Sampling Type:	Soil
Project Name:	STERLING SILVER 33 FED 3 CTB	Sampling Condition:	Cool & Intact
Project Number:	03B1417248	Sample Received By:	Alyssa Parras
Project Location:	OXY - EDDY CO NM		

Sample ID: DS 01 0.25' (H250067-01)

BTEX 8021B		mg/kg		Analyzed By: JH					
Analyte	Result	Reporting Limit	Analyzed	Method Blank	BS	% Recovery	True Value QC	RPD	Qualifier
Benzene*	<0.050	0.050	01/08/2025	ND	1.66	83.2	2.00	3.27	
Toluene*	<0.050	0.050	01/08/2025	ND	1.78	88.9	2.00	2.42	
Ethylbenzene*	<0.050	0.050	01/08/2025	ND	1.71	85.3	2.00	2.07	
Total Xylenes*	<0.150	0.150	01/08/2025	ND	4.98	83.0	6.00	1.93	
Total BTEX	<0.300	0.300	01/08/2025	ND					

Surrogate: 4-Bromofluorobenzene (PID) 94.1 % 71.5-134

Chloride, SM4500CI-B		mg/kg		Analyzed By: KV					
Analyte	Result	Reporting Limit	Analyzed	Method Blank	BS	% Recovery	True Value QC	RPD	Qualifier
Chloride	16.0	16.0	01/08/2025	ND	416	104	400	3.77	

TPH 8015M		mg/kg		Analyzed By: MS					
Analyte	Result	Reporting Limit	Analyzed	Method Blank	BS	% Recovery	True Value QC	RPD	Qualifier
GRO C6-C10*	<10.0	10.0	01/09/2025	ND	171	85.7	200	7.39	
DRO >C10-C28*	<10.0	10.0	01/09/2025	ND	165	82.3	200	10.5	
EXT DRO >C28-C36	<10.0	10.0	01/09/2025	ND					

Surrogate: 1-Chlorooctane 78.2 % 48.2-134

Surrogate: 1-Chlorooctadecane 71.0 % 49.1-148

Cardinal Laboratories

*=Accredited Analyte

PLEASE NOTE: Liability and Damages. Cardinal's liability and client's exclusive remedy for any claim arising, whether based in contract or tort, shall be limited to the amount paid by client for analyses. All claims, including those for negligence and any other cause whatsoever shall be deemed waived unless made in writing and received by Cardinal within thirty (30) days after completion of the applicable service. In no event shall Cardinal be liable for incidental or consequential damages, including, without limitation, business interruptions, loss of use, or loss of profits incurred by client, its subsidiaries, affiliates or successors arising out of or related to the performance of the services hereunder by Cardinal, regardless of whether such claim is based upon any of the above stated reasons or otherwise. Results relate only to the samples identified above. This report shall not be reproduced except in full with written approval of Cardinal Laboratories.

Celey D. Keene, Lab Director/Quality Manager



PHONE (575) 393-2326 ° 101 E. MARLAND ° HOBBS, NM 88240

Analytical Results For:

ENSOLUM, LLC
 SAMANTHA MACKENZIE
 705 W WADLEY AVE.
 MIDLAND TX, 79705
 Fax To:

Received:	01/07/2025	Sampling Date:	01/07/2025
Reported:	01/13/2025	Sampling Type:	Soil
Project Name:	STERLING SILVER 33 FED 3 CTB	Sampling Condition:	Cool & Intact
Project Number:	03B1417248	Sample Received By:	Alyssa Parras
Project Location:	OXY - EDDY CO NM		

Sample ID: DS 02 0.25' (H250067-02)

BTEX 8021B		mg/kg		Analyzed By: JH						
Analyte	Result	Reporting Limit	Analyzed	Method Blank	BS	% Recovery	True Value QC	RPD	Qualifier	
Benzene*	<0.050	0.050	01/08/2025	ND	1.66	83.2	2.00	3.27		
Toluene*	<0.050	0.050	01/08/2025	ND	1.78	88.9	2.00	2.42		
Ethylbenzene*	<0.050	0.050	01/08/2025	ND	1.71	85.3	2.00	2.07		
Total Xylenes*	<0.150	0.150	01/08/2025	ND	4.98	83.0	6.00	1.93		
Total BTEX	<0.300	0.300	01/08/2025	ND						

Surrogate: 4-Bromofluorobenzene (PID) 94.2 % 71.5-134

Chloride, SM4500CI-B		mg/kg		Analyzed By: KV						
Analyte	Result	Reporting Limit	Analyzed	Method Blank	BS	% Recovery	True Value QC	RPD	Qualifier	
Chloride	<16.0	16.0	01/08/2025	ND	416	104	400	3.77		

TPH 8015M		mg/kg		Analyzed By: MS						
Analyte	Result	Reporting Limit	Analyzed	Method Blank	BS	% Recovery	True Value QC	RPD	Qualifier	
GRO C6-C10*	<10.0	10.0	01/09/2025	ND	171	85.7	200	7.39		
DRO >C10-C28*	<10.0	10.0	01/09/2025	ND	165	82.3	200	10.5		
EXT DRO >C28-C36	<10.0	10.0	01/09/2025	ND						

Surrogate: 1-Chlorooctane 80.4 % 48.2-134

Surrogate: 1-Chlorooctadecane 72.0 % 49.1-148

Cardinal Laboratories

*=Accredited Analyte

PLEASE NOTE: Liability and Damages. Cardinal's liability and client's exclusive remedy for any claim arising, whether based in contract or tort, shall be limited to the amount paid by client for analyses. All claims, including those for negligence and any other cause whatsoever shall be deemed waived unless made in writing and received by Cardinal within thirty (30) days after completion of the applicable service. In no event shall Cardinal be liable for incidental or consequential damages, including, without limitation, business interruptions, loss of use, or loss of profits incurred by client, its subsidiaries, affiliates or successors arising out of or related to the performance of the services hereunder by Cardinal, regardless of whether such claim is based upon any of the above stated reasons or otherwise. Results relate only to the samples identified above. This report shall not be reproduced except in full with written approval of Cardinal Laboratories.

Celey D. Keene, Lab Director/Quality Manager



PHONE (575) 393-2326 ° 101 E. MARLAND ° HOBBS, NM 88240

Analytical Results For:

ENSOLUM, LLC
 SAMANTHA MACKENZIE
 705 W WADLEY AVE.
 MIDLAND TX, 79705
 Fax To:

Received:	01/07/2025	Sampling Date:	01/07/2025
Reported:	01/13/2025	Sampling Type:	Soil
Project Name:	STERLING SILVER 33 FED 3 CTB	Sampling Condition:	Cool & Intact
Project Number:	03B1417248	Sample Received By:	Alyssa Parras
Project Location:	OXY - EDDY CO NM		

Sample ID: DS 03 0.25' (H250067-03)

BTEX 8021B		mg/kg		Analyzed By: JH						
Analyte	Result	Reporting Limit	Analyzed	Method Blank	BS	% Recovery	True Value QC	RPD	Qualifier	
Benzene*	<0.050	0.050	01/08/2025	ND	1.66	83.2	2.00	3.27		
Toluene*	<0.050	0.050	01/08/2025	ND	1.78	88.9	2.00	2.42		
Ethylbenzene*	<0.050	0.050	01/08/2025	ND	1.71	85.3	2.00	2.07		
Total Xylenes*	<0.150	0.150	01/08/2025	ND	4.98	83.0	6.00	1.93		
Total BTEX	<0.300	0.300	01/08/2025	ND						

Surrogate: 4-Bromofluorobenzene (PID) 94.4 % 71.5-134

Chloride, SM4500CI-B		mg/kg		Analyzed By: KV						
Analyte	Result	Reporting Limit	Analyzed	Method Blank	BS	% Recovery	True Value QC	RPD	Qualifier	
Chloride	16.0	16.0	01/08/2025	ND	416	104	400	3.77		

TPH 8015M		mg/kg		Analyzed By: MS						
Analyte	Result	Reporting Limit	Analyzed	Method Blank	BS	% Recovery	True Value QC	RPD	Qualifier	
GRO C6-C10*	<10.0	10.0	01/09/2025	ND	171	85.7	200	7.39		
DRO >C10-C28*	<10.0	10.0	01/09/2025	ND	165	82.3	200	10.5		
EXT DRO >C28-C36	<10.0	10.0	01/09/2025	ND						

Surrogate: 1-Chlorooctane 84.6 % 48.2-134

Surrogate: 1-Chlorooctadecane 76.8 % 49.1-148

Cardinal Laboratories

*=Accredited Analyte

PLEASE NOTE: Liability and Damages. Cardinal's liability and client's exclusive remedy for any claim arising, whether based in contract or tort, shall be limited to the amount paid by client for analyses. All claims, including those for negligence and any other cause whatsoever shall be deemed waived unless made in writing and received by Cardinal within thirty (30) days after completion of the applicable service. In no event shall Cardinal be liable for incidental or consequential damages, including, without limitation, business interruptions, loss of use, or loss of profits incurred by client, its subsidiaries, affiliates or successors arising out of or related to the performance of the services hereunder by Cardinal, regardless of whether such claim is based upon any of the above stated reasons or otherwise. Results relate only to the samples identified above. This report shall not be reproduced except in full with written approval of Cardinal Laboratories.

Celey D. Keene, Lab Director/Quality Manager



PHONE (575) 393-2326 ° 101 E. MARLAND ° HOBBS, NM 88240

Analytical Results For:

ENSOLUM, LLC
 SAMANTHA MACKENZIE
 705 W WADLEY AVE.
 MIDLAND TX, 79705
 Fax To:

Received:	01/07/2025	Sampling Date:	01/07/2025
Reported:	01/13/2025	Sampling Type:	Soil
Project Name:	STERLING SILVER 33 FED 3 CTB	Sampling Condition:	Cool & Intact
Project Number:	03B1417248	Sample Received By:	Alyssa Parras
Project Location:	OXY - EDDY CO NM		

Sample ID: DS 04 0.25' (H250067-04)

BTEX 8021B		mg/kg		Analyzed By: JH						
Analyte	Result	Reporting Limit	Analyzed	Method Blank	BS	% Recovery	True Value QC	RPD	Qualifier	
Benzene*	<0.050	0.050	01/08/2025	ND	1.66	83.2	2.00	3.27		
Toluene*	<0.050	0.050	01/08/2025	ND	1.78	88.9	2.00	2.42		
Ethylbenzene*	<0.050	0.050	01/08/2025	ND	1.71	85.3	2.00	2.07		
Total Xylenes*	<0.150	0.150	01/08/2025	ND	4.98	83.0	6.00	1.93		
Total BTEX	<0.300	0.300	01/08/2025	ND						

Surrogate: 4-Bromofluorobenzene (PID) 93.7 % 71.5-134

Chloride, SM4500CI-B		mg/kg		Analyzed By: KV						
Analyte	Result	Reporting Limit	Analyzed	Method Blank	BS	% Recovery	True Value QC	RPD	Qualifier	
Chloride	16.0	16.0	01/08/2025	ND	416	104	400	3.77		

TPH 8015M		mg/kg		Analyzed By: MS						
Analyte	Result	Reporting Limit	Analyzed	Method Blank	BS	% Recovery	True Value QC	RPD	Qualifier	
GRO C6-C10*	<10.0	10.0	01/09/2025	ND	171	85.7	200	7.39		
DRO >C10-C28*	<10.0	10.0	01/09/2025	ND	165	82.3	200	10.5		
EXT DRO >C28-C36	<10.0	10.0	01/09/2025	ND						

Surrogate: 1-Chlorooctane 73.3 % 48.2-134

Surrogate: 1-Chlorooctadecane 65.5 % 49.1-148

Cardinal Laboratories

*=Accredited Analyte

PLEASE NOTE: Liability and Damages. Cardinal's liability and client's exclusive remedy for any claim arising, whether based in contract or tort, shall be limited to the amount paid by client for analyses. All claims, including those for negligence and any other cause whatsoever shall be deemed waived unless made in writing and received by Cardinal within thirty (30) days after completion of the applicable service. In no event shall Cardinal be liable for incidental or consequential damages, including, without limitation, business interruptions, loss of use, or loss of profits incurred by client, its subsidiaries, affiliates or successors arising out of or related to the performance of the services hereunder by Cardinal, regardless of whether such claim is based upon any of the above stated reasons or otherwise. Results relate only to the samples identified above. This report shall not be reproduced except in full with written approval of Cardinal Laboratories.

Celey D. Keene, Lab Director/Quality Manager



PHONE (575) 393-2326 ° 101 E. MARLAND ° HOBBS, NM 88240

Analytical Results For:

ENSOLUM, LLC
 SAMANTHA MACKENZIE
 705 W WADLEY AVE.
 MIDLAND TX, 79705
 Fax To:

Received:	01/07/2025	Sampling Date:	01/07/2025
Reported:	01/13/2025	Sampling Type:	Soil
Project Name:	STERLING SILVER 33 FED 3 CTB	Sampling Condition:	Cool & Intact
Project Number:	03B1417248	Sample Received By:	Alyssa Parras
Project Location:	OXY - EDDY CO NM		

Sample ID: DS 05 0.25' (H250067-05)

BTEX 8021B		mg/kg		Analyzed By: JH					
Analyte	Result	Reporting Limit	Analyzed	Method Blank	BS	% Recovery	True Value QC	RPD	Qualifier
Benzene*	<0.050	0.050	01/08/2025	ND	1.66	83.2	2.00	3.27	
Toluene*	<0.050	0.050	01/08/2025	ND	1.78	88.9	2.00	2.42	
Ethylbenzene*	<0.050	0.050	01/08/2025	ND	1.71	85.3	2.00	2.07	
Total Xylenes*	<0.150	0.150	01/08/2025	ND	4.98	83.0	6.00	1.93	
Total BTEX	<0.300	0.300	01/08/2025	ND					

Surrogate: 4-Bromofluorobenzene (PID) 94.5 % 71.5-134

Chloride, SM4500CI-B		mg/kg		Analyzed By: KV					
Analyte	Result	Reporting Limit	Analyzed	Method Blank	BS	% Recovery	True Value QC	RPD	Qualifier
Chloride	32.0	16.0	01/08/2025	ND	416	104	400	3.77	

TPH 8015M		mg/kg		Analyzed By: MS					
Analyte	Result	Reporting Limit	Analyzed	Method Blank	BS	% Recovery	True Value QC	RPD	Qualifier
GRO C6-C10*	<10.0	10.0	01/09/2025	ND	171	85.7	200	7.39	
DRO >C10-C28*	<10.0	10.0	01/09/2025	ND	165	82.3	200	10.5	
EXT DRO >C28-C36	<10.0	10.0	01/09/2025	ND					

Surrogate: 1-Chlorooctane 78.4 % 48.2-134

Surrogate: 1-Chlorooctadecane 71.3 % 49.1-148

Cardinal Laboratories

*=Accredited Analyte

PLEASE NOTE: Liability and Damages. Cardinal's liability and client's exclusive remedy for any claim arising, whether based in contract or tort, shall be limited to the amount paid by client for analyses. All claims, including those for negligence and any other cause whatsoever shall be deemed waived unless made in writing and received by Cardinal within thirty (30) days after completion of the applicable service. In no event shall Cardinal be liable for incidental or consequential damages, including, without limitation, business interruptions, loss of use, or loss of profits incurred by client, its subsidiaries, affiliates or successors arising out of or related to the performance of the services hereunder by Cardinal, regardless of whether such claim is based upon any of the above stated reasons or otherwise. Results relate only to the samples identified above. This report shall not be reproduced except in full with written approval of Cardinal Laboratories.

Celey D. Keene, Lab Director/Quality Manager



PHONE (575) 393-2326 ° 101 E. MARLAND ° HOBBS, NM 88240

Analytical Results For:

ENSOLUM, LLC
 SAMANTHA MACKENZIE
 705 W WADLEY AVE.
 MIDLAND TX, 79705
 Fax To:

Received:	01/07/2025	Sampling Date:	01/07/2025
Reported:	01/13/2025	Sampling Type:	Soil
Project Name:	STERLING SILVER 33 FED 3 CTB	Sampling Condition:	Cool & Intact
Project Number:	03B1417248	Sample Received By:	Alyssa Parras
Project Location:	OXY - EDDY CO NM		

Sample ID: DS 06 0.25' (H250067-06)

BTEX 8021B		mg/kg		Analyzed By: JH						
Analyte	Result	Reporting Limit	Analyzed	Method Blank	BS	% Recovery	True Value QC	RPD	Qualifier	
Benzene*	<0.050	0.050	01/08/2025	ND	1.66	83.2	2.00	3.27		
Toluene*	<0.050	0.050	01/08/2025	ND	1.78	88.9	2.00	2.42		
Ethylbenzene*	<0.050	0.050	01/08/2025	ND	1.71	85.3	2.00	2.07		
Total Xylenes*	<0.150	0.150	01/08/2025	ND	4.98	83.0	6.00	1.93		
Total BTEX	<0.300	0.300	01/08/2025	ND						

Surrogate: 4-Bromofluorobenzene (PID) 94.1 % 71.5-134

Chloride, SM4500CI-B		mg/kg		Analyzed By: KV						
Analyte	Result	Reporting Limit	Analyzed	Method Blank	BS	% Recovery	True Value QC	RPD	Qualifier	
Chloride	<16.0	16.0	01/08/2025	ND	416	104	400	3.77		

TPH 8015M		mg/kg		Analyzed By: MS						
Analyte	Result	Reporting Limit	Analyzed	Method Blank	BS	% Recovery	True Value QC	RPD	Qualifier	
GRO C6-C10*	<10.0	10.0	01/09/2025	ND	171	85.7	200	7.39		
DRO >C10-C28*	<10.0	10.0	01/09/2025	ND	165	82.3	200	10.5		
EXT DRO >C28-C36	<10.0	10.0	01/09/2025	ND						

Surrogate: 1-Chlorooctane 85.5 % 48.2-134

Surrogate: 1-Chlorooctadecane 78.7 % 49.1-148

Cardinal Laboratories

*=Accredited Analyte

PLEASE NOTE: Liability and Damages. Cardinal's liability and client's exclusive remedy for any claim arising, whether based in contract or tort, shall be limited to the amount paid by client for analyses. All claims, including those for negligence and any other cause whatsoever shall be deemed waived unless made in writing and received by Cardinal within thirty (30) days after completion of the applicable service. In no event shall Cardinal be liable for incidental or consequential damages, including, without limitation, business interruptions, loss of use, or loss of profits incurred by client, its subsidiaries, affiliates or successors arising out of or related to the performance of the services hereunder by Cardinal, regardless of whether such claim is based upon any of the above stated reasons or otherwise. Results relate only to the samples identified above. This report shall not be reproduced except in full with written approval of Cardinal Laboratories.

Celey D. Keene, Lab Director/Quality Manager



PHONE (575) 393-2326 ° 101 E. MARLAND ° HOBBS, NM 88240

Notes and Definitions

- QR-03 The RPD value for the sample duplicate or MS/MSD was outside of QC acceptance limits due to matrix interference. QC batch accepted based on LCS and/or LCSD recovery and/or RPD values.
BS-3 Blank spike recovery outside of lab established statistical limits, but still within method limits. Data is not adversely affected.
ND Analyte NOT DETECTED at or above the reporting limit
RPD Relative Percent Difference
** Samples not received at proper temperature of 6°C or below.
*** Insufficient time to reach temperature.
- Chloride by SM4500Cl-B does not require samples be received at or below 6°C
Samples reported on an as received basis (wet) unless otherwise noted on report

Cardinal Laboratories

*=Accredited Analyte

PLEASE NOTE: Liability and Damages. Cardinal's liability and client's exclusive remedy for any claim arising, whether based in contract or tort, shall be limited to the amount paid by client for analyses. All claims, including those for negligence and any other cause whatsoever shall be deemed waived unless made in writing and received by Cardinal within thirty (30) days after completion of the applicable service. In no event shall Cardinal be liable for incidental or consequential damages, including, without limitation, business interruptions, loss of use, or loss of profits incurred by client, its subsidiaries, affiliates or successors arising out of or related to the performance of the services hereunder by Cardinal, regardless of whether such claim is based upon any of the above stated reasons or otherwise. Results relate only to the samples identified above. This report shall not be reproduced except in full with written approval of Cardinal Laboratories.

Celey D. Keene

Celey D. Keene, Lab Director/Quality Manager



101 East Marland, Hobbs, NM 88240
 (575) 393-2326 FAX (575) 393-2476

CHAIN-OF-CUSTODY AND ANALYSIS REQUEST

BILL TO

ANALYSIS REQUEST

Company Name: Ensolum, LLC
 Project Manager: Samantha Mackenzie
 Address: 601 N Marientfeld Street, Suite 400
 City: Midland State: TX Zip: 79701
 Phone #: 703-357-3545 Fax #: _____
 Project #: 03B1417248 Project Owner: _____
 Project Name: Sterling Silver 33 Fed 3 CTB
 Project Location: Eddy County, NM
 Sampler Name: Noah Duker
 P.O. #: _____
 Attn: Wade Dittrich
 Address: _____
 City: _____
 State: _____ Zip: _____
 Phone #: _____
 Fax #: _____

Lab I.D.	Sample I.D.	Depth (feet)	(G)RAB OR (C)OMP.	# CONTAINERS	MATRIX							DATE	TIME	ANALYSIS REQUEST
					GROUNDWATER	WASTEWATER	SOIL	OIL	SLUDGE	OTHER :	ACID/BASE:			
11850007	1793	0.25'	G	1	X	X	X	X	X	X	X	1/7/24	1328	BTEX 8021
	1794	0.25'	G	1	X	X	X	X	X	X	X	1/7/24	1328	TPH 8015
	1795	0.25'	G	1	X	X	X	X	X	X	X	1/7/24	1324	Chlorides 4500
	1796	0.25'	G	1	X	X	X	X	X	X	X	1/7/24	1326	
	1797	0.25'	G	1	X	X	X	X	X	X	X	1/7/24	1329	

FOR LAB USE ONLY

PLEASE NOTE: Liability and Damages: Cardinal's liability and client's exclusive remedy for any claim arising whether based in contract or tort, shall be limited to the amount paid by the client for the analyses. All claims including those for negligence and any other cause whatsoever shall be deemed waived unless made in writing and received by Cardinal within 30 days after completion of the applicable service. In no event shall Cardinal be liable for incidental or consequential damages, including without limitation, business interruptions, loss of use, or loss of profits incurred by client, its subsidiaries, affiliates or successors arising out of or related to the performance of services rendered by Cardinal regardless of whether such claim is based upon any of the above stated reasons or otherwise.

Relinquished By: *Wade Dittrich* Date: *1-7-25* Time: *11:03*
 Received By: *APR*

Delivered By: (Circle One) UPS - Bus - Other: _____
 Observed Temp. °C: *30°C* Sample Condition: Cool Intact
 Corrected Temp. °C: *33°C* Yes No

Turnaround Time: Standard Rush
 Thermometer ID: *443* Bacteria (only) Yes No
 Correction Factor: *0.5°C - 0.10°C* Yes No

Checked By: *AP*
 Verbal Result: Yes No Add'l Phone #: _____
 All Results are emailed. Please provide Email address: _____

REMARKS: _____

† Cardinal cannot accept verbal changes. Please email changes to celey.keene@cardinalabsnm.com



PHONE (575) 393-2326 ° 101 E. MARLAND ° HOBBS, NM 88240

February 24, 2025

SAMANTHA MACKENZIE
ENSOLUM, LLC
705 W WADLEY AVE.
MIDLAND, TX 79705

RE: STERLING SILVER 33 FED 3 CTB

Enclosed are the results of analyses for samples received by the laboratory on 02/18/25 15:11.

Cardinal Laboratories is accredited through Texas NELAP under certificate number TX-C24-00112. Accreditation applies to drinking water, non-potable water and solid and chemical materials. All accredited analytes are denoted by an asterisk (*). For a complete list of accredited analytes and matrices visit the TCEQ website at www.tceq.texas.gov/field/qa/lab_accred_certif.html.

Cardinal Laboratories is accredited through the State of Colorado Department of Public Health and Environment for:

Method EPA 552.2	Haloacetic Acids (HAA-5)
Method EPA 524.2	Total Trihalomethanes (TTHM)
Method EPA 524.4	Regulated VOCs (V1, V2, V3)

Accreditation applies to public drinking water matrices.

This report meets NELAP requirements and is made up of a cover page, analytical results, and a copy of the original chain-of-custody. If you have any questions concerning this report, please feel free to contact me.

Sincerely,

Celey D. Keene
Lab Director/Quality Manager



PHONE (575) 393-2326 ° 101 E. MARLAND ° HOBBS, NM 88240

Analytical Results For:

ENSOLUM, LLC
 SAMANTHA MACKENZIE
 705 W WADLEY AVE.
 MIDLAND TX, 79705
 Fax To:

Received:	02/18/2025	Sampling Date:	02/17/2025
Reported:	02/24/2025	Sampling Type:	Soil
Project Name:	STERLING SILVER 33 FED 3 CTB	Sampling Condition:	Cool & Intact
Project Number:	03B1417248	Sample Received By:	Alyssa Parras
Project Location:	OXY - EDDY CO NM		

Sample ID: CS 02 5' (H250969-01)

BTEX 8021B		mg/kg		Analyzed By: JH					
Analyte	Result	Reporting Limit	Analyzed	Method Blank	BS	% Recovery	True Value QC	RPD	Qualifier
Benzene*	<0.050	0.050	02/19/2025	ND	2.09	105	2.00	0.0285	
Toluene*	<0.050	0.050	02/19/2025	ND	2.21	111	2.00	0.913	
Ethylbenzene*	<0.050	0.050	02/19/2025	ND	2.27	114	2.00	1.08	
Total Xylenes*	<0.150	0.150	02/19/2025	ND	6.95	116	6.00	1.30	
Total BTEX	<0.300	0.300	02/19/2025	ND					

Surrogate: 4-Bromofluorobenzene (PID) 111 % 71.5-134

Chloride, SM4500Cl-B		mg/kg		Analyzed By: AC					
Analyte	Result	Reporting Limit	Analyzed	Method Blank	BS	% Recovery	True Value QC	RPD	Qualifier
Chloride	176	16.0	02/19/2025	ND	416	104	400	0.00	

TPH 8015M		mg/kg		Analyzed By: MS					
Analyte	Result	Reporting Limit	Analyzed	Method Blank	BS	% Recovery	True Value QC	RPD	Qualifier
GRO C6-C10*	<10.0	10.0	02/19/2025	ND	183	91.4	200	2.38	
DRO >C10-C28*	<10.0	10.0	02/19/2025	ND	181	90.5	200	3.35	
EXT DRO >C28-C36	<10.0	10.0	02/19/2025	ND					

Surrogate: 1-Chlorooctane 92.0 % 48.2-134

Surrogate: 1-Chlorooctadecane 90.4 % 49.1-148

Cardinal Laboratories

*=Accredited Analyte

PLEASE NOTE: Liability and Damages. Cardinal's liability and client's exclusive remedy for any claim arising, whether based in contract or tort, shall be limited to the amount paid by client for analyses. All claims, including those for negligence and any other cause whatsoever shall be deemed waived unless made in writing and received by Cardinal within thirty (30) days after completion of the applicable service. In no event shall Cardinal be liable for incidental or consequential damages, including, without limitation, business interruptions, loss of use, or loss of profits incurred by client, its subsidiaries, affiliates or successors arising out of or related to the performance of the services hereunder by Cardinal, regardless of whether such claim is based upon any of the above stated reasons or otherwise. Results relate only to the samples identified above. This report shall not be reproduced except in full with written approval of Cardinal Laboratories.

Celey D. Keene, Lab Director/Quality Manager



PHONE (575) 393-2326 ° 101 E. MARLAND ° HOBBS, NM 88240

Analytical Results For:

ENSOLUM, LLC
 SAMANTHA MACKENZIE
 705 W WADLEY AVE.
 MIDLAND TX, 79705
 Fax To:

Received:	02/18/2025	Sampling Date:	02/17/2025
Reported:	02/24/2025	Sampling Type:	Soil
Project Name:	STERLING SILVER 33 FED 3 CTB	Sampling Condition:	Cool & Intact
Project Number:	03B1417248	Sample Received By:	Alyssa Parras
Project Location:	OXY - EDDY CO NM		

Sample ID: CS 04 3' (H250969-02)

BTEX 8021B		mg/kg		Analyzed By: JH					
Analyte	Result	Reporting Limit	Analyzed	Method Blank	BS	% Recovery	True Value QC	RPD	Qualifier
Benzene*	<0.050	0.050	02/19/2025	ND	2.09	105	2.00	0.0285	
Toluene*	<0.050	0.050	02/19/2025	ND	2.21	111	2.00	0.913	
Ethylbenzene*	<0.050	0.050	02/19/2025	ND	2.27	114	2.00	1.08	
Total Xylenes*	<0.150	0.150	02/19/2025	ND	6.95	116	6.00	1.30	
Total BTEX	<0.300	0.300	02/19/2025	ND					

Surrogate: 4-Bromofluorobenzene (PID) 110 % 71.5-134

Chloride, SM4500CI-B		mg/kg		Analyzed By: AC					
Analyte	Result	Reporting Limit	Analyzed	Method Blank	BS	% Recovery	True Value QC	RPD	Qualifier
Chloride	32.0	16.0	02/19/2025	ND	416	104	400	0.00	

TPH 8015M		mg/kg		Analyzed By: MS					
Analyte	Result	Reporting Limit	Analyzed	Method Blank	BS	% Recovery	True Value QC	RPD	Qualifier
GRO C6-C10*	<10.0	10.0	02/19/2025	ND	183	91.4	200	2.38	
DRO >C10-C28*	<10.0	10.0	02/19/2025	ND	181	90.5	200	3.35	
EXT DRO >C28-C36	<10.0	10.0	02/19/2025	ND					

Surrogate: 1-Chlorooctane 90.8 % 48.2-134

Surrogate: 1-Chlorooctadecane 88.6 % 49.1-148

Cardinal Laboratories

*=Accredited Analyte

PLEASE NOTE: Liability and Damages. Cardinal's liability and client's exclusive remedy for any claim arising, whether based in contract or tort, shall be limited to the amount paid by client for analyses. All claims, including those for negligence and any other cause whatsoever shall be deemed waived unless made in writing and received by Cardinal within thirty (30) days after completion of the applicable service. In no event shall Cardinal be liable for incidental or consequential damages, including, without limitation, business interruptions, loss of use, or loss of profits incurred by client, its subsidiaries, affiliates or successors arising out of or related to the performance of the services hereunder by Cardinal, regardless of whether such claim is based upon any of the above stated reasons or otherwise. Results relate only to the samples identified above. This report shall not be reproduced except in full with written approval of Cardinal Laboratories.

Celey D. Keene, Lab Director/Quality Manager



PHONE (575) 393-2326 ° 101 E. MARLAND ° HOBBS, NM 88240

Analytical Results For:

ENSOLUM, LLC
 SAMANTHA MACKENZIE
 705 W WADLEY AVE.
 MIDLAND TX, 79705
 Fax To:

Received:	02/18/2025	Sampling Date:	02/17/2025
Reported:	02/24/2025	Sampling Type:	Soil
Project Name:	STERLING SILVER 33 FED 3 CTB	Sampling Condition:	Cool & Intact
Project Number:	03B1417248	Sample Received By:	Alyssa Parras
Project Location:	OXY - EDDY CO NM		

Sample ID: CS 05 3' (H250969-03)

BTEX 8021B		mg/kg		Analyzed By: JH					
Analyte	Result	Reporting Limit	Analyzed	Method Blank	BS	% Recovery	True Value QC	RPD	Qualifier
Benzene*	<0.050	0.050	02/20/2025	ND	2.09	105	2.00	0.0285	
Toluene*	<0.050	0.050	02/20/2025	ND	2.21	111	2.00	0.913	
Ethylbenzene*	<0.050	0.050	02/20/2025	ND	2.27	114	2.00	1.08	
Total Xylenes*	<0.150	0.150	02/20/2025	ND	6.95	116	6.00	1.30	
Total BTEX	<0.300	0.300	02/20/2025	ND					

Surrogate: 4-Bromofluorobenzene (PID) 109 % 71.5-134

Chloride, SM4500CI-B		mg/kg		Analyzed By: AC					
Analyte	Result	Reporting Limit	Analyzed	Method Blank	BS	% Recovery	True Value QC	RPD	Qualifier
Chloride	32.0	16.0	02/19/2025	ND	416	104	400	0.00	

TPH 8015M		mg/kg		Analyzed By: MS					
Analyte	Result	Reporting Limit	Analyzed	Method Blank	BS	% Recovery	True Value QC	RPD	Qualifier
GRO C6-C10*	<10.0	10.0	02/19/2025	ND	183	91.4	200	2.38	
DRO >C10-C28*	<10.0	10.0	02/19/2025	ND	181	90.5	200	3.35	
EXT DRO >C28-C36	<10.0	10.0	02/19/2025	ND					

Surrogate: 1-Chlorooctane 86.8 % 48.2-134

Surrogate: 1-Chlorooctadecane 90.8 % 49.1-148

Cardinal Laboratories

*=Accredited Analyte

PLEASE NOTE: Liability and Damages. Cardinal's liability and client's exclusive remedy for any claim arising, whether based in contract or tort, shall be limited to the amount paid by client for analyses. All claims, including those for negligence and any other cause whatsoever shall be deemed waived unless made in writing and received by Cardinal within thirty (30) days after completion of the applicable service. In no event shall Cardinal be liable for incidental or consequential damages, including, without limitation, business interruptions, loss of use, or loss of profits incurred by client, its subsidiaries, affiliates or successors arising out of or related to the performance of the services hereunder by Cardinal, regardless of whether such claim is based upon any of the above stated reasons or otherwise. Results relate only to the samples identified above. This report shall not be reproduced except in full with written approval of Cardinal Laboratories.

Celey D. Keene, Lab Director/Quality Manager



PHONE (575) 393-2326 ° 101 E. MARLAND ° HOBBS, NM 88240

Analytical Results For:

ENSOLUM, LLC
 SAMANTHA MACKENZIE
 705 W WADLEY AVE.
 MIDLAND TX, 79705
 Fax To:

Received:	02/18/2025	Sampling Date:	02/17/2025
Reported:	02/24/2025	Sampling Type:	Soil
Project Name:	STERLING SILVER 33 FED 3 CTB	Sampling Condition:	Cool & Intact
Project Number:	03B1417248	Sample Received By:	Alyssa Parras
Project Location:	OXY - EDDY CO NM		

Sample ID: CS 06 3' (H250969-04)

BTEX 8021B		mg/kg		Analyzed By: JH					
Analyte	Result	Reporting Limit	Analyzed	Method Blank	BS	% Recovery	True Value QC	RPD	Qualifier
Benzene*	<0.050	0.050	02/20/2025	ND	2.09	105	2.00	0.0285	
Toluene*	<0.050	0.050	02/20/2025	ND	2.21	111	2.00	0.913	
Ethylbenzene*	<0.050	0.050	02/20/2025	ND	2.27	114	2.00	1.08	
Total Xylenes*	<0.150	0.150	02/20/2025	ND	6.95	116	6.00	1.30	
Total BTEX	<0.300	0.300	02/20/2025	ND					

Surrogate: 4-Bromofluorobenzene (PID) 110 % 71.5-134

Chloride, SM4500CI-B		mg/kg		Analyzed By: HM					
Analyte	Result	Reporting Limit	Analyzed	Method Blank	BS	% Recovery	True Value QC	RPD	Qualifier
Chloride	16.0	16.0	02/19/2025	ND	432	108	400	3.77	

TPH 8015M		mg/kg		Analyzed By: MS					
Analyte	Result	Reporting Limit	Analyzed	Method Blank	BS	% Recovery	True Value QC	RPD	Qualifier
GRO C6-C10*	<10.0	10.0	02/19/2025	ND	183	91.4	200	2.38	
DRO >C10-C28*	<10.0	10.0	02/19/2025	ND	181	90.5	200	3.35	
EXT DRO >C28-C36	<10.0	10.0	02/19/2025	ND					

Surrogate: 1-Chlorooctane 90.0 % 48.2-134

Surrogate: 1-Chlorooctadecane 88.4 % 49.1-148

Cardinal Laboratories

*=Accredited Analyte

PLEASE NOTE: Liability and Damages. Cardinal's liability and client's exclusive remedy for any claim arising, whether based in contract or tort, shall be limited to the amount paid by client for analyses. All claims, including those for negligence and any other cause whatsoever shall be deemed waived unless made in writing and received by Cardinal within thirty (30) days after completion of the applicable service. In no event shall Cardinal be liable for incidental or consequential damages, including, without limitation, business interruptions, loss of use, or loss of profits incurred by client, its subsidiaries, affiliates or successors arising out of or related to the performance of the services hereunder by Cardinal, regardless of whether such claim is based upon any of the above stated reasons or otherwise. Results relate only to the samples identified above. This report shall not be reproduced except in full with written approval of Cardinal Laboratories.

Celey D. Keene, Lab Director/Quality Manager



PHONE (575) 393-2326 ° 101 E. MARLAND ° HOBBS, NM 88240

Analytical Results For:

ENSOLUM, LLC
 SAMANTHA MACKENZIE
 705 W WADLEY AVE.
 MIDLAND TX, 79705
 Fax To:

Received:	02/18/2025	Sampling Date:	02/17/2025
Reported:	02/24/2025	Sampling Type:	Soil
Project Name:	STERLING SILVER 33 FED 3 CTB	Sampling Condition:	Cool & Intact
Project Number:	03B1417248	Sample Received By:	Alyssa Parras
Project Location:	OXY - EDDY CO NM		

Sample ID: CS 08 3' (H250969-05)

BTEX 8021B		mg/kg		Analyzed By: JH					
Analyte	Result	Reporting Limit	Analyzed	Method Blank	BS	% Recovery	True Value QC	RPD	Qualifier
Benzene*	<0.050	0.050	02/20/2025	ND	2.09	105	2.00	0.0285	
Toluene*	<0.050	0.050	02/20/2025	ND	2.21	111	2.00	0.913	
Ethylbenzene*	<0.050	0.050	02/20/2025	ND	2.27	114	2.00	1.08	
Total Xylenes*	<0.150	0.150	02/20/2025	ND	6.95	116	6.00	1.30	
Total BTEX	<0.300	0.300	02/20/2025	ND					

Surrogate: 4-Bromofluorobenzene (PID) 110 % 71.5-134

Chloride, SM4500CI-B		mg/kg		Analyzed By: HM					
Analyte	Result	Reporting Limit	Analyzed	Method Blank	BS	% Recovery	True Value QC	RPD	Qualifier
Chloride	16.0	16.0	02/19/2025	ND	432	108	400	3.77	

TPH 8015M		mg/kg		Analyzed By: MS					
Analyte	Result	Reporting Limit	Analyzed	Method Blank	BS	% Recovery	True Value QC	RPD	Qualifier
GRO C6-C10*	<10.0	10.0	02/19/2025	ND	183	91.4	200	2.38	
DRO >C10-C28*	<10.0	10.0	02/19/2025	ND	181	90.5	200	3.35	
EXT DRO >C28-C36	<10.0	10.0	02/19/2025	ND					

Surrogate: 1-Chlorooctane 94.3 % 48.2-134

Surrogate: 1-Chlorooctadecane 92.0 % 49.1-148

Cardinal Laboratories

*=Accredited Analyte

PLEASE NOTE: Liability and Damages. Cardinal's liability and client's exclusive remedy for any claim arising, whether based in contract or tort, shall be limited to the amount paid by client for analyses. All claims, including those for negligence and any other cause whatsoever shall be deemed waived unless made in writing and received by Cardinal within thirty (30) days after completion of the applicable service. In no event shall Cardinal be liable for incidental or consequential damages, including, without limitation, business interruptions, loss of use, or loss of profits incurred by client, its subsidiaries, affiliates or successors arising out of or related to the performance of the services hereunder by Cardinal, regardless of whether such claim is based upon any of the above stated reasons or otherwise. Results relate only to the samples identified above. This report shall not be reproduced except in full with written approval of Cardinal Laboratories.

Celey D. Keene, Lab Director/Quality Manager



PHONE (575) 393-2326 ° 101 E. MARLAND ° HOBBS, NM 88240

Analytical Results For:

ENSOLUM, LLC
 SAMANTHA MACKENZIE
 705 W WADLEY AVE.
 MIDLAND TX, 79705
 Fax To:

Received:	02/18/2025	Sampling Date:	02/18/2025
Reported:	02/24/2025	Sampling Type:	Soil
Project Name:	STERLING SILVER 33 FED 3 CTB	Sampling Condition:	Cool & Intact
Project Number:	03B1417248	Sample Received By:	Alyssa Parras
Project Location:	OXY - EDDY CO NM		

Sample ID: CS 01 5' (H250969-06)

BTEX 8021B		mg/kg		Analyzed By: JH					
Analyte	Result	Reporting Limit	Analyzed	Method Blank	BS	% Recovery	True Value QC	RPD	Qualifier
Benzene*	<0.050	0.050	02/20/2025	ND	2.09	105	2.00	0.0285	
Toluene*	<0.050	0.050	02/20/2025	ND	2.21	111	2.00	0.913	
Ethylbenzene*	<0.050	0.050	02/20/2025	ND	2.27	114	2.00	1.08	
Total Xylenes*	<0.150	0.150	02/20/2025	ND	6.95	116	6.00	1.30	
Total BTEX	<0.300	0.300	02/20/2025	ND					

Surrogate: 4-Bromofluorobenzene (PID) 110 % 71.5-134

Chloride, SM4500CI-B		mg/kg		Analyzed By: HM					
Analyte	Result	Reporting Limit	Analyzed	Method Blank	BS	% Recovery	True Value QC	RPD	Qualifier
Chloride	80.0	16.0	02/19/2025	ND	432	108	400	3.77	

TPH 8015M		mg/kg		Analyzed By: MS					
Analyte	Result	Reporting Limit	Analyzed	Method Blank	BS	% Recovery	True Value QC	RPD	Qualifier
GRO C6-C10*	<10.0	10.0	02/19/2025	ND	183	91.4	200	2.38	
DRO >C10-C28*	<10.0	10.0	02/19/2025	ND	181	90.5	200	3.35	
EXT DRO >C28-C36	<10.0	10.0	02/19/2025	ND					

Surrogate: 1-Chlorooctane 92.2 % 48.2-134

Surrogate: 1-Chlorooctadecane 88.5 % 49.1-148

Cardinal Laboratories

*=Accredited Analyte

PLEASE NOTE: Liability and Damages. Cardinal's liability and client's exclusive remedy for any claim arising, whether based in contract or tort, shall be limited to the amount paid by client for analyses. All claims, including those for negligence and any other cause whatsoever shall be deemed waived unless made in writing and received by Cardinal within thirty (30) days after completion of the applicable service. In no event shall Cardinal be liable for incidental or consequential damages, including, without limitation, business interruptions, loss of use, or loss of profits incurred by client, its subsidiaries, affiliates or successors arising out of or related to the performance of the services hereunder by Cardinal, regardless of whether such claim is based upon any of the above stated reasons or otherwise. Results relate only to the samples identified above. This report shall not be reproduced except in full with written approval of Cardinal Laboratories.

Celey D. Keene, Lab Director/Quality Manager



PHONE (575) 393-2326 ° 101 E. MARLAND ° HOBBS, NM 88240

Analytical Results For:

ENSOLUM, LLC
 SAMANTHA MACKENZIE
 705 W WADLEY AVE.
 MIDLAND TX, 79705
 Fax To:

Received:	02/18/2025	Sampling Date:	02/18/2025
Reported:	02/24/2025	Sampling Type:	Soil
Project Name:	STERLING SILVER 33 FED 3 CTB	Sampling Condition:	Cool & Intact
Project Number:	03B1417248	Sample Received By:	Alyssa Parras
Project Location:	OXY - EDDY CO NM		

Sample ID: CS 03 6' (H250969-07)

BTEX 8021B		mg/kg		Analyzed By: JH					
Analyte	Result	Reporting Limit	Analyzed	Method Blank	BS	% Recovery	True Value QC	RPD	Qualifier
Benzene*	<0.050	0.050	02/20/2025	ND	2.09	105	2.00	0.0285	
Toluene*	<0.050	0.050	02/20/2025	ND	2.21	111	2.00	0.913	
Ethylbenzene*	<0.050	0.050	02/20/2025	ND	2.27	114	2.00	1.08	
Total Xylenes*	<0.150	0.150	02/20/2025	ND	6.95	116	6.00	1.30	
Total BTEX	<0.300	0.300	02/20/2025	ND					

Surrogate: 4-Bromofluorobenzene (PID) 107 % 71.5-134

Chloride, SM4500CI-B		mg/kg		Analyzed By: HM					
Analyte	Result	Reporting Limit	Analyzed	Method Blank	BS	% Recovery	True Value QC	RPD	Qualifier
Chloride	64.0	16.0	02/19/2025	ND	432	108	400	3.77	

TPH 8015M		mg/kg		Analyzed By: MS					
Analyte	Result	Reporting Limit	Analyzed	Method Blank	BS	% Recovery	True Value QC	RPD	Qualifier
GRO C6-C10*	<10.0	10.0	02/19/2025	ND	183	91.4	200	2.38	
DRO >C10-C28*	<10.0	10.0	02/19/2025	ND	181	90.5	200	3.35	
EXT DRO >C28-C36	<10.0	10.0	02/19/2025	ND					

Surrogate: 1-Chlorooctane 98.9 % 48.2-134

Surrogate: 1-Chlorooctadecane 94.6 % 49.1-148

Cardinal Laboratories

*=Accredited Analyte

PLEASE NOTE: Liability and Damages. Cardinal's liability and client's exclusive remedy for any claim arising, whether based in contract or tort, shall be limited to the amount paid by client for analyses. All claims, including those for negligence and any other cause whatsoever shall be deemed waived unless made in writing and received by Cardinal within thirty (30) days after completion of the applicable service. In no event shall Cardinal be liable for incidental or consequential damages, including, without limitation, business interruptions, loss of use, or loss of profits incurred by client, its subsidiaries, affiliates or successors arising out of or related to the performance of the services hereunder by Cardinal, regardless of whether such claim is based upon any of the above stated reasons or otherwise. Results relate only to the samples identified above. This report shall not be reproduced except in full with written approval of Cardinal Laboratories.

Celey D. Keene, Lab Director/Quality Manager



PHONE (575) 393-2326 ° 101 E. MARLAND ° HOBBS, NM 88240

Analytical Results For:

ENSOLUM, LLC
 SAMANTHA MACKENZIE
 705 W WADLEY AVE.
 MIDLAND TX, 79705
 Fax To:

Received:	02/18/2025	Sampling Date:	02/18/2025
Reported:	02/24/2025	Sampling Type:	Soil
Project Name:	STERLING SILVER 33 FED 3 CTB	Sampling Condition:	Cool & Intact
Project Number:	03B1417248	Sample Received By:	Alyssa Parras
Project Location:	OXY - EDDY CO NM		

Sample ID: CS 07 6' (H250969-08)

BTEX 8021B		mg/kg		Analyzed By: JH					
Analyte	Result	Reporting Limit	Analyzed	Method Blank	BS	% Recovery	True Value QC	RPD	Qualifier
Benzene*	<0.050	0.050	02/20/2025	ND	2.09	105	2.00	0.0285	
Toluene*	<0.050	0.050	02/20/2025	ND	2.21	111	2.00	0.913	
Ethylbenzene*	<0.050	0.050	02/20/2025	ND	2.27	114	2.00	1.08	
Total Xylenes*	<0.150	0.150	02/20/2025	ND	6.95	116	6.00	1.30	
Total BTEX	<0.300	0.300	02/20/2025	ND					

Surrogate: 4-Bromofluorobenzene (PID) 108 % 71.5-134

Chloride, SM4500CI-B		mg/kg		Analyzed By: HM					
Analyte	Result	Reporting Limit	Analyzed	Method Blank	BS	% Recovery	True Value QC	RPD	Qualifier
Chloride	16.0	16.0	02/19/2025	ND	432	108	400	3.77	

TPH 8015M		mg/kg		Analyzed By: MS					
Analyte	Result	Reporting Limit	Analyzed	Method Blank	BS	% Recovery	True Value QC	RPD	Qualifier
GRO C6-C10*	<10.0	10.0	02/19/2025	ND	183	91.4	200	2.38	
DRO >C10-C28*	<10.0	10.0	02/19/2025	ND	181	90.5	200	3.35	
EXT DRO >C28-C36	<10.0	10.0	02/19/2025	ND					

Surrogate: 1-Chlorooctane 92.2 % 48.2-134

Surrogate: 1-Chlorooctadecane 89.9 % 49.1-148

Cardinal Laboratories

*=Accredited Analyte

PLEASE NOTE: Liability and Damages. Cardinal's liability and client's exclusive remedy for any claim arising, whether based in contract or tort, shall be limited to the amount paid by client for analyses. All claims, including those for negligence and any other cause whatsoever shall be deemed waived unless made in writing and received by Cardinal within thirty (30) days after completion of the applicable service. In no event shall Cardinal be liable for incidental or consequential damages, including, without limitation, business interruptions, loss of use, or loss of profits incurred by client, its subsidiaries, affiliates or successors arising out of or related to the performance of the services hereunder by Cardinal, regardless of whether such claim is based upon any of the above stated reasons or otherwise. Results relate only to the samples identified above. This report shall not be reproduced except in full with written approval of Cardinal Laboratories.

Celey D. Keene, Lab Director/Quality Manager



PHONE (575) 393-2326 ° 101 E. MARLAND ° HOBBS, NM 88240

Analytical Results For:

ENSOLUM, LLC
 SAMANTHA MACKENZIE
 705 W WADLEY AVE.
 MIDLAND TX, 79705
 Fax To:

Received:	02/18/2025	Sampling Date:	02/18/2025
Reported:	02/24/2025	Sampling Type:	Soil
Project Name:	STERLING SILVER 33 FED 3 CTB	Sampling Condition:	Cool & Intact
Project Number:	03B1417248	Sample Received By:	Alyssa Parras
Project Location:	OXY - EDDY CO NM		

Sample ID: SW 01 0-6' (H250969-09)

BTEX 8021B		mg/kg		Analyzed By: JH					
Analyte	Result	Reporting Limit	Analyzed	Method Blank	BS	% Recovery	True Value QC	RPD	Qualifier
Benzene*	<0.050	0.050	02/20/2025	ND	2.09	105	2.00	0.0285	
Toluene*	<0.050	0.050	02/20/2025	ND	2.21	111	2.00	0.913	
Ethylbenzene*	<0.050	0.050	02/20/2025	ND	2.27	114	2.00	1.08	
Total Xylenes*	<0.150	0.150	02/20/2025	ND	6.95	116	6.00	1.30	
Total BTEX	<0.300	0.300	02/20/2025	ND					

Surrogate: 4-Bromofluorobenzene (PID) 107 % 71.5-134

Chloride, SM4500CI-B		mg/kg		Analyzed By: HM					
Analyte	Result	Reporting Limit	Analyzed	Method Blank	BS	% Recovery	True Value QC	RPD	Qualifier
Chloride	96.0	16.0	02/19/2025	ND	432	108	400	3.77	

TPH 8015M		mg/kg		Analyzed By: MS					
Analyte	Result	Reporting Limit	Analyzed	Method Blank	BS	% Recovery	True Value QC	RPD	Qualifier
GRO C6-C10*	<10.0	10.0	02/19/2025	ND	183	91.4	200	2.38	
DRO >C10-C28*	<10.0	10.0	02/19/2025	ND	181	90.5	200	3.35	
EXT DRO >C28-C36	<10.0	10.0	02/19/2025	ND					

Surrogate: 1-Chlorooctane 91.1 % 48.2-134

Surrogate: 1-Chlorooctadecane 88.6 % 49.1-148

Cardinal Laboratories

*=Accredited Analyte

PLEASE NOTE: Liability and Damages. Cardinal's liability and client's exclusive remedy for any claim arising, whether based in contract or tort, shall be limited to the amount paid by client for analyses. All claims, including those for negligence and any other cause whatsoever shall be deemed waived unless made in writing and received by Cardinal within thirty (30) days after completion of the applicable service. In no event shall Cardinal be liable for incidental or consequential damages, including, without limitation, business interruptions, loss of use, or loss of profits incurred by client, its subsidiaries, affiliates or successors arising out of or related to the performance of the services hereunder by Cardinal, regardless of whether such claim is based upon any of the above stated reasons or otherwise. Results relate only to the samples identified above. This report shall not be reproduced except in full with written approval of Cardinal Laboratories.

Celey D. Keene, Lab Director/Quality Manager



PHONE (575) 393-2326 ° 101 E. MARLAND ° HOBBS, NM 88240

Analytical Results For:

ENSOLUM, LLC
 SAMANTHA MACKENZIE
 705 W WADLEY AVE.
 MIDLAND TX, 79705
 Fax To:

Received:	02/18/2025	Sampling Date:	02/18/2025
Reported:	02/24/2025	Sampling Type:	Soil
Project Name:	STERLING SILVER 33 FED 3 CTB	Sampling Condition:	Cool & Intact
Project Number:	03B1417248	Sample Received By:	Alyssa Parras
Project Location:	OXY - EDDY CO NM		

Sample ID: SW 02 0-5' (H250969-10)

BTEX 8021B		mg/kg		Analyzed By: JH					
Analyte	Result	Reporting Limit	Analyzed	Method Blank	BS	% Recovery	True Value QC	RPD	Qualifier
Benzene*	<0.050	0.050	02/19/2025	ND	2.15	108	2.00	0.127	
Toluene*	<0.050	0.050	02/19/2025	ND	2.35	117	2.00	0.253	
Ethylbenzene*	<0.050	0.050	02/19/2025	ND	2.46	123	2.00	0.134	
Total Xylenes*	<0.150	0.150	02/19/2025	ND	7.35	123	6.00	0.836	
Total BTEX	<0.300	0.300	02/19/2025	ND					

Surrogate: 4-Bromofluorobenzene (PID) 109 % 71.5-134

Chloride, SM4500CI-B		mg/kg		Analyzed By: HM					
Analyte	Result	Reporting Limit	Analyzed	Method Blank	BS	% Recovery	True Value QC	RPD	Qualifier
Chloride	80.0	16.0	02/19/2025	ND	432	108	400	3.77	

TPH 8015M		mg/kg		Analyzed By: MS					
Analyte	Result	Reporting Limit	Analyzed	Method Blank	BS	% Recovery	True Value QC	RPD	Qualifier
GRO C6-C10*	<10.0	10.0	02/19/2025	ND	183	91.4	200	2.38	
DRO >C10-C28*	<10.0	10.0	02/19/2025	ND	181	90.5	200	3.35	
EXT DRO >C28-C36	<10.0	10.0	02/19/2025	ND					

Surrogate: 1-Chlorooctane 92.2 % 48.2-134

Surrogate: 1-Chlorooctadecane 91.3 % 49.1-148

Cardinal Laboratories

*=Accredited Analyte

PLEASE NOTE: Liability and Damages. Cardinal's liability and client's exclusive remedy for any claim arising, whether based in contract or tort, shall be limited to the amount paid by client for analyses. All claims, including those for negligence and any other cause whatsoever shall be deemed waived unless made in writing and received by Cardinal within thirty (30) days after completion of the applicable service. In no event shall Cardinal be liable for incidental or consequential damages, including, without limitation, business interruptions, loss of use, or loss of profits incurred by client, its subsidiaries, affiliates or successors arising out of or related to the performance of the services hereunder by Cardinal, regardless of whether such claim is based upon any of the above stated reasons or otherwise. Results relate only to the samples identified above. This report shall not be reproduced except in full with written approval of Cardinal Laboratories.

Celey D. Keene, Lab Director/Quality Manager



PHONE (575) 393-2326 ° 101 E. MARLAND ° HOBBS, NM 88240

Analytical Results For:

ENSOLUM, LLC
 SAMANTHA MACKENZIE
 705 W WADLEY AVE.
 MIDLAND TX, 79705
 Fax To:

Received:	02/18/2025	Sampling Date:	02/18/2025
Reported:	02/24/2025	Sampling Type:	Soil
Project Name:	STERLING SILVER 33 FED 3 CTB	Sampling Condition:	Cool & Intact
Project Number:	03B1417248	Sample Received By:	Alyssa Parras
Project Location:	OXY - EDDY CO NM		

Sample ID: SW 03 0-3' (H250969-11)

BTEX 8021B		mg/kg		Analyzed By: JH					
Analyte	Result	Reporting Limit	Analyzed	Method Blank	BS	% Recovery	True Value QC	RPD	Qualifier
Benzene*	<0.050	0.050	02/19/2025	ND	2.15	108	2.00	0.127	
Toluene*	<0.050	0.050	02/19/2025	ND	2.35	117	2.00	0.253	
Ethylbenzene*	<0.050	0.050	02/19/2025	ND	2.46	123	2.00	0.134	
Total Xylenes*	<0.150	0.150	02/19/2025	ND	7.35	123	6.00	0.836	
Total BTEX	<0.300	0.300	02/19/2025	ND					

Surrogate: 4-Bromofluorobenzene (PID) 110 % 71.5-134

Chloride, SM4500CI-B		mg/kg		Analyzed By: HM					
Analyte	Result	Reporting Limit	Analyzed	Method Blank	BS	% Recovery	True Value QC	RPD	Qualifier
Chloride	80.0	16.0	02/19/2025	ND	432	108	400	3.77	

TPH 8015M		mg/kg		Analyzed By: MS					
Analyte	Result	Reporting Limit	Analyzed	Method Blank	BS	% Recovery	True Value QC	RPD	Qualifier
GRO C6-C10*	<10.0	10.0	02/19/2025	ND	183	91.4	200	2.38	
DRO >C10-C28*	<10.0	10.0	02/19/2025	ND	181	90.5	200	3.35	
EXT DRO >C28-C36	<10.0	10.0	02/19/2025	ND					

Surrogate: 1-Chlorooctane 79.5 % 48.2-134

Surrogate: 1-Chlorooctadecane 77.6 % 49.1-148

Cardinal Laboratories

*=Accredited Analyte

PLEASE NOTE: Liability and Damages. Cardinal's liability and client's exclusive remedy for any claim arising, whether based in contract or tort, shall be limited to the amount paid by client for analyses. All claims, including those for negligence and any other cause whatsoever shall be deemed waived unless made in writing and received by Cardinal within thirty (30) days after completion of the applicable service. In no event shall Cardinal be liable for incidental or consequential damages, including, without limitation, business interruptions, loss of use, or loss of profits incurred by client, its subsidiaries, affiliates or successors arising out of or related to the performance of the services hereunder by Cardinal, regardless of whether such claim is based upon any of the above stated reasons or otherwise. Results relate only to the samples identified above. This report shall not be reproduced except in full with written approval of Cardinal Laboratories.

Celey D. Keene, Lab Director/Quality Manager



PHONE (575) 393-2326 ° 101 E. MARLAND ° HOBBS, NM 88240

Analytical Results For:

ENSOLUM, LLC
 SAMANTHA MACKENZIE
 705 W WADLEY AVE.
 MIDLAND TX, 79705
 Fax To:

Received:	02/18/2025	Sampling Date:	02/18/2025
Reported:	02/24/2025	Sampling Type:	Soil
Project Name:	STERLING SILVER 33 FED 3 CTB	Sampling Condition:	Cool & Intact
Project Number:	03B1417248	Sample Received By:	Alyssa Parras
Project Location:	OXY - EDDY CO NM		

Sample ID: SW 04 0-3' (H250969-12)

BTEX 8021B		mg/kg		Analyzed By: JH					
Analyte	Result	Reporting Limit	Analyzed	Method Blank	BS	% Recovery	True Value QC	RPD	Qualifier
Benzene*	<0.050	0.050	02/19/2025	ND	2.15	108	2.00	0.127	
Toluene*	<0.050	0.050	02/19/2025	ND	2.35	117	2.00	0.253	
Ethylbenzene*	<0.050	0.050	02/19/2025	ND	2.46	123	2.00	0.134	
Total Xylenes*	<0.150	0.150	02/19/2025	ND	7.35	123	6.00	0.836	
Total BTEX	<0.300	0.300	02/19/2025	ND					

Surrogate: 4-Bromofluorobenzene (PID) 110 % 71.5-134

Chloride, SM4500CI-B		mg/kg		Analyzed By: HM					
Analyte	Result	Reporting Limit	Analyzed	Method Blank	BS	% Recovery	True Value QC	RPD	Qualifier
Chloride	96.0	16.0	02/19/2025	ND	432	108	400	3.77	

TPH 8015M		mg/kg		Analyzed By: MS					
Analyte	Result	Reporting Limit	Analyzed	Method Blank	BS	% Recovery	True Value QC	RPD	Qualifier
GRO C6-C10*	<10.0	10.0	02/19/2025	ND	183	91.4	200	2.38	
DRO >C10-C28*	<10.0	10.0	02/19/2025	ND	181	90.5	200	3.35	
EXT DRO >C28-C36	<10.0	10.0	02/19/2025	ND					

Surrogate: 1-Chlorooctane 94.3 % 48.2-134

Surrogate: 1-Chlorooctadecane 93.7 % 49.1-148

Cardinal Laboratories

*=Accredited Analyte

PLEASE NOTE: Liability and Damages. Cardinal's liability and client's exclusive remedy for any claim arising, whether based in contract or tort, shall be limited to the amount paid by client for analyses. All claims, including those for negligence and any other cause whatsoever shall be deemed waived unless made in writing and received by Cardinal within thirty (30) days after completion of the applicable service. In no event shall Cardinal be liable for incidental or consequential damages, including, without limitation, business interruptions, loss of use, or loss of profits incurred by client, its subsidiaries, affiliates or successors arising out of or related to the performance of the services hereunder by Cardinal, regardless of whether such claim is based upon any of the above stated reasons or otherwise. Results relate only to the samples identified above. This report shall not be reproduced except in full with written approval of Cardinal Laboratories.

Celey D. Keene, Lab Director/Quality Manager



PHONE (575) 393-2326 ° 101 E. MARLAND ° HOBBS, NM 88240

Analytical Results For:

ENSOLUM, LLC
 SAMANTHA MACKENZIE
 705 W WADLEY AVE.
 MIDLAND TX, 79705
 Fax To:

Received:	02/18/2025	Sampling Date:	02/18/2025
Reported:	02/24/2025	Sampling Type:	Soil
Project Name:	STERLING SILVER 33 FED 3 CTB	Sampling Condition:	Cool & Intact
Project Number:	03B1417248	Sample Received By:	Alyssa Parras
Project Location:	OXY - EDDY CO NM		

Sample ID: SW 05 0-1' (H250969-13)

BTEX 8021B		mg/kg		Analyzed By: JH					
Analyte	Result	Reporting Limit	Analyzed	Method Blank	BS	% Recovery	True Value QC	RPD	Qualifier
Benzene*	<0.050	0.050	02/19/2025	ND	2.15	108	2.00	0.127	
Toluene*	<0.050	0.050	02/19/2025	ND	2.35	117	2.00	0.253	
Ethylbenzene*	<0.050	0.050	02/19/2025	ND	2.46	123	2.00	0.134	
Total Xylenes*	<0.150	0.150	02/19/2025	ND	7.35	123	6.00	0.836	
Total BTEX	<0.300	0.300	02/19/2025	ND					

Surrogate: 4-Bromofluorobenzene (PID) 111 % 71.5-134

Chloride, SM4500CI-B		mg/kg		Analyzed By: HM					
Analyte	Result	Reporting Limit	Analyzed	Method Blank	BS	% Recovery	True Value QC	RPD	Qualifier
Chloride	16.0	16.0	02/19/2025	ND	432	108	400	3.77	

TPH 8015M		mg/kg		Analyzed By: MS					
Analyte	Result	Reporting Limit	Analyzed	Method Blank	BS	% Recovery	True Value QC	RPD	Qualifier
GRO C6-C10*	<10.0	10.0	02/19/2025	ND	183	91.4	200	2.38	
DRO >C10-C28*	<10.0	10.0	02/19/2025	ND	181	90.5	200	3.35	
EXT DRO >C28-C36	<10.0	10.0	02/19/2025	ND					

Surrogate: 1-Chlorooctane 86.2 % 48.2-134

Surrogate: 1-Chlorooctadecane 87.9 % 49.1-148

Cardinal Laboratories

*=Accredited Analyte

PLEASE NOTE: Liability and Damages. Cardinal's liability and client's exclusive remedy for any claim arising, whether based in contract or tort, shall be limited to the amount paid by client for analyses. All claims, including those for negligence and any other cause whatsoever shall be deemed waived unless made in writing and received by Cardinal within thirty (30) days after completion of the applicable service. In no event shall Cardinal be liable for incidental or consequential damages, including, without limitation, business interruptions, loss of use, or loss of profits incurred by client, its subsidiaries, affiliates or successors arising out of or related to the performance of the services hereunder by Cardinal, regardless of whether such claim is based upon any of the above stated reasons or otherwise. Results relate only to the samples identified above. This report shall not be reproduced except in full with written approval of Cardinal Laboratories.

Celey D. Keene, Lab Director/Quality Manager



PHONE (575) 393-2326 ° 101 E. MARLAND ° HOBBS, NM 88240

Analytical Results For:

ENSOLUM, LLC
 SAMANTHA MACKENZIE
 705 W WADLEY AVE.
 MIDLAND TX, 79705
 Fax To:

Received:	02/18/2025	Sampling Date:	02/18/2025
Reported:	02/24/2025	Sampling Type:	Soil
Project Name:	STERLING SILVER 33 FED 3 CTB	Sampling Condition:	Cool & Intact
Project Number:	03B1417248	Sample Received By:	Alyssa Parras
Project Location:	OXY - EDDY CO NM		

Sample ID: SW 06 0-1' (H250969-14)

BTEX 8021B		mg/kg		Analyzed By: JH					
Analyte	Result	Reporting Limit	Analyzed	Method Blank	BS	% Recovery	True Value QC	RPD	Qualifier
Benzene*	<0.050	0.050	02/19/2025	ND	2.15	108	2.00	0.127	
Toluene*	<0.050	0.050	02/19/2025	ND	2.35	117	2.00	0.253	
Ethylbenzene*	<0.050	0.050	02/19/2025	ND	2.46	123	2.00	0.134	
Total Xylenes*	<0.150	0.150	02/19/2025	ND	7.35	123	6.00	0.836	
Total BTEX	<0.300	0.300	02/19/2025	ND					

Surrogate: 4-Bromofluorobenzene (PID) 111 % 71.5-134

Chloride, SM4500CI-B		mg/kg		Analyzed By: HM					
Analyte	Result	Reporting Limit	Analyzed	Method Blank	BS	% Recovery	True Value QC	RPD	Qualifier
Chloride	64.0	16.0	02/19/2025	ND	432	108	400	3.77	

TPH 8015M		mg/kg		Analyzed By: MS					
Analyte	Result	Reporting Limit	Analyzed	Method Blank	BS	% Recovery	True Value QC	RPD	Qualifier
GRO C6-C10*	<10.0	10.0	02/19/2025	ND	183	91.4	200	2.38	
DRO >C10-C28*	<10.0	10.0	02/19/2025	ND	181	90.5	200	3.35	
EXT DRO >C28-C36	<10.0	10.0	02/19/2025	ND					

Surrogate: 1-Chlorooctane 90.4 % 48.2-134

Surrogate: 1-Chlorooctadecane 89.7 % 49.1-148

Cardinal Laboratories

*=Accredited Analyte

PLEASE NOTE: Liability and Damages. Cardinal's liability and client's exclusive remedy for any claim arising, whether based in contract or tort, shall be limited to the amount paid by client for analyses. All claims, including those for negligence and any other cause whatsoever shall be deemed waived unless made in writing and received by Cardinal within thirty (30) days after completion of the applicable service. In no event shall Cardinal be liable for incidental or consequential damages, including, without limitation, business interruptions, loss of use, or loss of profits incurred by client, its subsidiaries, affiliates or successors arising out of or related to the performance of the services hereunder by Cardinal, regardless of whether such claim is based upon any of the above stated reasons or otherwise. Results relate only to the samples identified above. This report shall not be reproduced except in full with written approval of Cardinal Laboratories.

Celey D. Keene, Lab Director/Quality Manager



PHONE (575) 393-2326 ° 101 E. MARLAND ° HOBBS, NM 88240

Notes and Definitions

- ND Analyte NOT DETECTED at or above the reporting limit
- RPD Relative Percent Difference
- ** Samples not received at proper temperature of 6°C or below.
- *** Insufficient time to reach temperature.
- Chloride by SM4500Cl-B does not require samples be received at or below 6°C
Samples reported on an as received basis (wet) unless otherwise noted on report

Cardinal Laboratories

*=Accredited Analyte

PLEASE NOTE: Liability and Damages. Cardinal's liability and client's exclusive remedy for any claim arising, whether based in contract or tort, shall be limited to the amount paid by client for analyses. All claims, including those for negligence and any other cause whatsoever shall be deemed waived unless made in writing and received by Cardinal within thirty (30) days after completion of the applicable service. In no event shall Cardinal be liable for incidental or consequential damages, including, without limitation, business interruptions, loss of use, or loss of profits incurred by client, its subsidiaries, affiliates or successors arising out of or related to the performance of the services hereunder by Cardinal, regardless of whether such claim is based upon any of the above stated reasons or otherwise. Results relate only to the samples identified above. This report shall not be reproduced except in full with written approval of Cardinal Laboratories.

Celey D. Keene

Celey D. Keene, Lab Director/Quality Manager



101 East Marland, Hobbs, NM 88240
 (575) 393-2326 FAX (575) 393-2476

CHAIN-OF-CUSTODY AND ANALYSIS REQUEST

Company Name: Ensolum, LLC

Project Manager: ~~Robert Jennings~~ *Samantha Mackenzie*

Address: 601 N. Marland St. STE 400

City: Midland

Phone #: ~~210-210-9869~~ *705-573-3471*

Project #: ~~03B1417248~~ *03B1417248*

Project Name: *Stirling Silver 33 Fed 3 CTB*

Project Location: *Eddy County*

Sampler Name: *Tabitha Guadian*

FOR LAB USE ONLY

Lab I.D. *HS09168*

Sample I.D. *CS02*

Sample Depth (feet) *5'*

(G)RAB OR (C)OMP. *C1*

CONTAINERS *1*

MATRIX: GROUNDWATER, WASTEWATER, SOIL, OIL, SLUDGE, OTHER:

PRESERV: ACID/BASE, ICE / COOL, OTHER:

DATE *2/18/25* TIME *1330*

Lab I.D.	Sample I.D.	Sample Depth (feet)	(G)RAB OR (C)OMP.	# CONTAINERS	MATRIX	PRESERV	SAMPLING	DATE	TIME	BTEX	TPH	Chloride
<i>HS09168</i>	<i>CS02</i>	<i>5'</i>	<i>C1</i>	<i>1</i>	<input checked="" type="checkbox"/>	<input checked="" type="checkbox"/>	<input checked="" type="checkbox"/>	<i>2/18/25</i>	<i>1330</i>	<i>X</i>	<i>X</i>	<i>X</i>
	<i>CS04</i>	<i>3'</i>	<i>C1</i>	<i>1</i>	<input checked="" type="checkbox"/>	<input checked="" type="checkbox"/>	<input checked="" type="checkbox"/>	<i>2/17/25</i>	<i>1224</i>	<i>X</i>	<i>X</i>	<i>X</i>
	<i>CS05</i>	<i>3'</i>	<i>C1</i>	<i>1</i>	<input checked="" type="checkbox"/>	<input checked="" type="checkbox"/>	<input checked="" type="checkbox"/>	<i>2/17/25</i>	<i>1020</i>	<i>X</i>	<i>X</i>	<i>X</i>
	<i>CS06</i>	<i>3'</i>	<i>C1</i>	<i>1</i>	<input checked="" type="checkbox"/>	<input checked="" type="checkbox"/>	<input checked="" type="checkbox"/>	<i>2/17/25</i>	<i>1024</i>	<i>X</i>	<i>X</i>	<i>X</i>
	<i>CS08</i>	<i>1'</i>	<i>C1</i>	<i>1</i>	<input checked="" type="checkbox"/>	<input checked="" type="checkbox"/>	<input checked="" type="checkbox"/>	<i>2/17/25</i>	<i>1024</i>	<i>X</i>	<i>X</i>	<i>X</i>
	<i>CS01</i>	<i>5'</i>	<i>C1</i>	<i>1</i>	<input checked="" type="checkbox"/>	<input checked="" type="checkbox"/>	<input checked="" type="checkbox"/>	<i>2/18/25</i>	<i>1146</i>	<i>X</i>	<i>X</i>	<i>X</i>
	<i>CS03</i>	<i>6'</i>	<i>C1</i>	<i>1</i>	<input checked="" type="checkbox"/>	<input checked="" type="checkbox"/>	<input checked="" type="checkbox"/>	<i>2/18/25</i>	<i>1148</i>	<i>X</i>	<i>X</i>	<i>X</i>
	<i>CS07</i>	<i>6'</i>	<i>C1</i>	<i>1</i>	<input checked="" type="checkbox"/>	<input checked="" type="checkbox"/>	<input checked="" type="checkbox"/>	<i>2/18/25</i>	<i>1150</i>	<i>X</i>	<i>X</i>	<i>X</i>
	<i>SW01</i>	<i>0-6'</i>	<i>C1</i>	<i>1</i>	<input checked="" type="checkbox"/>	<input checked="" type="checkbox"/>	<input checked="" type="checkbox"/>	<i>2/18/25</i>	<i>1152</i>	<i>X</i>	<i>X</i>	<i>X</i>
	<i>SW02</i>	<i>0-5'</i>	<i>C1</i>	<i>1</i>	<input checked="" type="checkbox"/>	<input checked="" type="checkbox"/>	<input checked="" type="checkbox"/>	<i>2/18/25</i>	<i>1154</i>	<i>X</i>	<i>X</i>	<i>X</i>

PLEASE NOTE: Liability and Damages: Cardinal's liability and client's exclusive remedy for any claim arising whether based in contract or tort, shall be limited to the amount paid by the client for the analysis. All claims, including those for negligence and any other cause whatsoever shall be deemed waived unless made in writing and received by Cardinal within 30 days after completion of the applicable service. In no event shall Cardinal be liable for incidental or consequential damages, including without limitation, business interruptions, loss of use, or loss of profits incurred by client, its subsidiaries, affiliates or successors arising out of or related to the performance of services hereunder by Cardinal, regardless of whether such claim is based upon any of the above stated releases or otherwise.

Relinquished By: *[Signature]* Date: *2/18/25* Time: *15:11*

Received By: *[Signature]* Date: *2/18/25* Time: *15:11*

Delivered By: (Circle One) UPS Bus Other: _____

Observed Temp. °C *0.3* Sample Condition Cool Intact Yes No

Corrected Temp. °C *0.3* Checked By: *[Signature]* (Initials)

Turnaround Time: *AP 3:15 PM* Standard Bacteria (only) Sample Condition Cool Intact Observed Temp. °C *0.3*

Thermometer ID # *119* *Rush* Yes No

Correction Factor *-0.5°C + 0.3* Yes No

Corrected Temp. °C _____

REMARKS: *Ensolum.com* *ts* *Samantha.Mackenzie@ensolum.com*



101 East Marland, Hobbs, NM 88240
 (575) 393-2326 FAX (575) 393-2476

CHAIN-OF-CUSTODY AND ANALYSIS REQUEST

Company Name: Ensolum, LLC Project Manager: Bessie Jennings & Samantha Mackenzie Address: 601 N. Marientfeld St. STE 400 City: Midland Phone #: 214-249-8888 703-557-5575 Project #: 03B1417248 Project Name: Sterling Silver 83 Fed 3 CTB Project Location: Eddy County Sampler Name: Tabitha Guadian		FOR LAB USE ONLY	
Company: Oxy USA, Inc. Attn: Wade Dittich Address: City: State: TX Zip: 79701 Phone #: 575-390-2828 Fax #:		BILL TO	
Sample I.D. HA50918 11 12 13 14		Sample Depth (feet) 0-3' 0-3' 0-1' 0-1'	
Matrix GROUNDWATER WASTEWATER SOIL OIL SLUDGE OTHER:		Preserv ACID/BASE: ICE / COOL OTHER:	
Sample I.D. SW03 SW04 SW05 SW06		DATE 2/18/25 2/18/25 2/18/25 2/18/25	
Sample I.D. 11 12 13 14		TIME 1156 1158 1200 1202	
(G)RAB OR (C)OMP. # CONTAINERS MATRIX PRESERV SAMPLING		BTEX 8021 TPH 8015 Chlorides 4500	
Verbal Result: <input type="checkbox"/> Yes <input type="checkbox"/> No <input type="checkbox"/> Add'l Phone #: All Results are emailed. Please provide Email address: REMARKS: smackenzie@ensolum.com			
Relinquished By: [Signature] Date: 2/18/25 Time: 15:11		Received By: [Signature] Date: _____ Time: _____	
Delivered By: (Circle One) Sampler - UPS - Bus - Other:		Observed Temp. °C: 03.2 Corrected Temp. °C: 0.0 Sample Condition: Cool Intact Checked By: [Signature]	
Turnaround Time: Standard <input checked="" type="checkbox"/> Rush <input type="checkbox"/> Bacteria (only) Sample Condition: Cool Intact <input type="checkbox"/> Yes <input type="checkbox"/> No <input type="checkbox"/> Corrected Temp. °C		Verbal Result: <input type="checkbox"/> Yes <input type="checkbox"/> No <input type="checkbox"/> Add'l Phone #: All Results are emailed. Please provide Email address: REMARKS:	



PHONE (575) 393-2326 ° 101 E. MARLAND ° HOBBS, NM 88240

March 04, 2025

SAMANTHA MACKENZIE

ENSOLUM, LLC

705 W WADLEY AVE.

MIDLAND, TX 79705

RE: TWIN WELLS RANCH BUCK JACKSON PIT

Enclosed are the results of analyses for samples received by the laboratory on 03/03/25 16:38.

Cardinal Laboratories is accredited through Texas NELAP under certificate number TX-C24-00112. Accreditation applies to drinking water, non-potable water and solid and chemical materials. All accredited analytes are denoted by an asterisk (*). For a complete list of accredited analytes and matrices visit the TCEQ website at www.tceq.texas.gov/field/qa/lab_accred_certif.html.

Cardinal Laboratories is accredited through the State of Colorado Department of Public Health and Environment for:

Method EPA 552.2	Haloacetic Acids (HAA-5)
Method EPA 524.2	Total Trihalomethanes (TTHM)
Method EPA 524.4	Regulated VOCs (V1, V2, V3)

Accreditation applies to public drinking water matrices.

This report meets NELAP requirements and is made up of a cover page, analytical results, and a copy of the original chain-of-custody. If you have any questions concerning this report, please feel free to contact me.

Sincerely,

Celey D. Keene

Lab Director/Quality Manager



PHONE (575) 393-2326 ° 101 E. MARLAND ° HOBBS, NM 88240

Analytical Results For:

ENSOLUM, LLC
 SAMANTHA MACKENZIE
 705 W WADLEY AVE.
 MIDLAND TX, 79705
 Fax To:

Received:	03/03/2025	Sampling Date:	03/03/2025
Reported:	03/04/2025	Sampling Type:	Soil
Project Name:	TWIN WELLS RANCH BUCK JACKSON PIT	Sampling Condition:	Cool & Intact
Project Number:	03B1417248	Sample Received By:	Alyssa Parras
Project Location:	OXY - LOVING COUNTY, NM		

Sample ID: TWIN WELLS RANCH BUCK JACKSON PIT (H251265-01)

BTEX 8021B		mg/kg		Analyzed By: JH					
Analyte	Result	Reporting Limit	Analyzed	Method Blank	BS	% Recovery	True Value QC	RPD	Qualifier
Benzene*	<0.050	0.050	03/03/2025	ND	2.02	101	2.00	0.127	
Toluene*	<0.050	0.050	03/03/2025	ND	2.10	105	2.00	0.0621	
Ethylbenzene*	<0.050	0.050	03/03/2025	ND	2.02	101	2.00	0.0935	
Total Xylenes*	<0.150	0.150	03/03/2025	ND	5.92	98.7	6.00	0.00143	
Total BTEX	<0.300	0.300	03/03/2025	ND					

Surrogate: 4-Bromofluorobenzene (PID) 96.0 % 71.5-134

Chloride, SM4500Cl-B		mg/kg		Analyzed By: HM					
Analyte	Result	Reporting Limit	Analyzed	Method Blank	BS	% Recovery	True Value QC	RPD	Qualifier
Chloride	<16.0	16.0	03/04/2025	ND	448	112	400	3.64	

TPH 8015M		mg/kg		Analyzed By: MS					
Analyte	Result	Reporting Limit	Analyzed	Method Blank	BS	% Recovery	True Value QC	RPD	Qualifier
GRO C6-C10*	<10.0	10.0	03/04/2025	ND	194	97.0	200	3.72	
DRO >C10-C28*	<10.0	10.0	03/04/2025	ND	187	93.3	200	3.75	
EXT DRO >C28-C36	<10.0	10.0	03/04/2025	ND					

Surrogate: 1-Chlorooctane 87.2 % 71.8-148

Surrogate: 1-Chlorooctadecane 87.4 % 63.9-155

Cardinal Laboratories

*=Accredited Analyte

PLEASE NOTE: Liability and Damages. Cardinal's liability and client's exclusive remedy for any claim arising, whether based in contract or tort, shall be limited to the amount paid by client for analyses. All claims, including those for negligence and any other cause whatsoever shall be deemed waived unless made in writing and received by Cardinal within thirty (30) days after completion of the applicable service. In no event shall Cardinal be liable for incidental or consequential damages, including, without limitation, business interruptions, loss of use, or loss of profits incurred by client, its subsidiaries, affiliates or successors arising out of or related to the performance of the services hereunder by Cardinal, regardless of whether such claim is based upon any of the above stated reasons or otherwise. Results relate only to the samples identified above. This report shall not be reproduced except in full with written approval of Cardinal Laboratories.

Celey D. Keene, Lab Director/Quality Manager



PHONE (575) 393-2326 ° 101 E. MARLAND ° HOBBS, NM 88240

Notes and Definitions

- ND Analyte NOT DETECTED at or above the reporting limit
- RPD Relative Percent Difference
- ** Samples not received at proper temperature of 6°C or below.
- *** Insufficient time to reach temperature.
- Chloride by SM4500Cl-B does not require samples be received at or below 6°C
Samples reported on an as received basis (wet) unless otherwise noted on report

Cardinal Laboratories

*=Accredited Analyte

PLEASE NOTE: Liability and Damages. Cardinal's liability and client's exclusive remedy for any claim arising, whether based in contract or tort, shall be limited to the amount paid by client for analyses. All claims, including those for negligence and any other cause whatsoever shall be deemed waived unless made in writing and received by Cardinal within thirty (30) days after completion of the applicable service. In no event shall Cardinal be liable for incidental or consequential damages, including, without limitation, business interruptions, loss of use, or loss of profits incurred by client, its subsidiaries, affiliates or successors arising out of or related to the performance of the services hereunder by Cardinal, regardless of whether such claim is based upon any of the above stated reasons or otherwise. Results relate only to the samples identified above. This report shall not be reproduced except in full with written approval of Cardinal Laboratories.

Celey D. Keene

Celey D. Keene, Lab Director/Quality Manager



101 East Marland, Hobbs, NM 88240
 (575) 393-2326 FAX (575) 393-2476

CHAIN-OF-CUSTODY AND ANALYSIS REQUEST

BILL TO

ANALYSIS REQUEST

Company Name: ENSOLDM LLC P.O. #: _____
 Project Manager: SAMANTHA MACKENZIE Company: _____
 Address: 601 N MACKENZIE Attn: WADE DITTRICH
 City: MIDLAND State: TX zip: 79701 Address: _____
 Phone #: 703 357 3545 Fax #: _____ City: _____
 Project #: 0381417248 Project Owner: Oxy State: _____ Zip: _____
 Project Name: Twin Wells Ranch Buck Jackson Pit Phone #: _____
 Project Location: LOVING COUNTY, NM Fax #: _____
 Sampler Name: Neha Burke

FOR LAB USE ONLY

Sample I.D.	(G)RAB OR (C)OMP.	MATRIX	PRESERV.	SAMPLING	DATE	TIME	ANALYSIS REQUEST		
	# CONTAINERS							GROUNDWATER	WASTEWATER

Lab I.D. <u>W52007</u>	Sample I.D. <u>Jackson Pit</u>	(G)RAB OR (C)OMP. <u>C</u>	# CONTAINERS <u>1</u>	GROUNDWATER	WASTEWATER	SOIL	OIL	SLUDGE	OTHER :	ACID/BASE:	ICE / COOL	OTHER :	DATE	TIME	ANALYSIS REQUEST
	<u>Twin Wells Ranch Brick</u>												<u>3/3/2025</u>	<u>NFE</u>	<u>CHLORIDE 4500</u>
	<u>Jackson Pit</u>														<u>TPH</u>
															<u>BTEX</u>

PLEASE NOTE: Liability and Damages. Cardinal's liability and client's exclusive remedy for any claim arising whether based in contract or tort, shall be limited to the amount paid by the client for the analyses. All claims, including those for negligence and any other cause whatsoever shall be deemed waived unless made in writing and received by Cardinal within 30 days after completion of the applicable service. In no event shall Cardinal be liable for incidental or consequential damages, including without limitation, business interruptions, loss of use, or loss of profits incurred by client, its subsidiaries, affiliates or successors arising out of or related to the performance of services hereunder by Cardinal, regardless of whether such claim is based upon any of the above stated reasons or otherwise.

Relinquished By: _____ Date: 3-3-25 Received By: APRIL
 Time: 10:28 Date: _____ Received By: _____
 Time: _____ Date: _____ Received By: _____

Delivered By: (Circle One) Observed Temp. °C 4.5 Sample Condition Intact Broken
 Cooler Yes No
 Sampler - UPS - Bus - Other: Corrected Temp. °C 4.8 Checked By: AD
 Turnaround Time: _____ Standard RUSH Bacteria (only) Sample Condition Observed Temp. °C _____
 Thermometer ID #140 Correction Factor +0.3°C 24 hrs Yes No Corrected Temp. °C _____

Remarks: _____
 Verbal Result: Yes No Add'l Phone #: _____
 All Results are emailed. Please provide Email address: _____

Cardinal cannot accept verbal changes. Please email changes to celey.keene@cardinallabsnm.com



APPENDIX D

NMOCD Correspondence

From: [Hamlet, Robert, EMNRD](#)
To: [Samantha MacKenzie](#)
Cc: ["Dittrich, John W"; Bratcher, Michael, EMNRD; Rodgers, Scott, EMNRD](#)
Subject: (Extension Approval) - Sterling Silver 33 Fed 3 CTB (NAPP2435236546)
Date: Friday, February 28, 2025 9:51:49 AM
Attachments: [image006.png](#)
[image007.png](#)
[image008.png](#)

You don't often get email from robert.hamlet@emnrd.nm.gov. [Learn why this is important](#)

[EXTERNAL EMAIL**]**

Samantha,

OCD Permitting has been revamped recently and automatically defaults to 90 days for a Remediation Closure Report Extension, which this appears to be. An extension to **May 29th, 2025** is approved. Please include this e-mail correspondence in the Remediation Closure Report.

Regards,

Robert Hamlet • Environmental Specialist - Advanced
Environmental Bureau
EMNRD - Oil Conservation Division
506 W. Texas Ave. | Artesia, NM 88210
575.909.0302 | robert.hamlet@emnrd.nm.gov
<http://www.emnrd.state.nm.us/OCD/>



From: Rodgers, Scott, EMNRD <Scott.Rodgers@emnrd.nm.gov>
Sent: Thursday, February 27, 2025 3:00 PM
To: Hamlet, Robert, EMNRD <Robert.Hamlet@emnrd.nm.gov>
Cc: Bratcher, Michael, EMNRD <mike.bratcher@emnrd.nm.gov>
Subject: FW: [EXTERNAL] Extension Request Sterling Silver 33 Fed 3 CTB (NAPP2435236546)

Scott Rodgers • Environmental Specialist – Adv.
Environmental Bureau
EMNRD - Oil Conservation Division
5200 Oakland NE, Suite B | Albuquerque, NM 87113

505.469.1830 | scott.rodgers@emnrd.nm.gov

<http://www.emnrd.nm.gov/oed>



From: Samantha MacKenzie <smackenzie@ensolum.com>

Sent: Thursday, February 27, 2025 12:12 PM

To: Enviro, OCD, EMNRD <OCD.Enviro@emnrd.nm.gov>

Cc: Dittrich, John W <Wade_Dittrich@oxy.com>; camorgan@blm.gov

Subject: [EXTERNAL] Extension Request Sterling Silver 33 Fed 3 CTB (NAPP2435236546)

You don't often get email from smackenzie@ensolum.com. [Learn why this is important](#)

CAUTION: This email originated outside of our organization. Exercise caution prior to clicking on links or opening attachments.

Hello,

On behalf of Oxy USA, Inc, Ensolum, LLC would like to request a 30-day extension for the

Due to delays in scheduling with contractors and various team members, excavation activities at the Site have just recently been completed to meet the Closure Criteria Limits specific to this location. The site has been fully remediated. We will begin the drafting the Closure for this Site. Therefore, we humbly ask for an extension so that we may complete the report and so it can be thoroughly reviewed before submitting the final copy to the portal. Please let us know if you have any questions.

Thank you so much for your time!



Samantha MacKenzie

Staff Geologist

703-357-3545

Ensolum, LLC

in f X

Sante Fe Main Office
Phone: (505) 476-3441

General Information
Phone: (505) 629-6116

Online Phone Directory
<https://www.emnrd.nm.gov/ocd/contact-us>

State of New Mexico
Energy, Minerals and Natural Resources
Oil Conservation Division
1220 S. St Francis Dr.
Santa Fe, NM 87505

QUESTIONS

Action 448621

QUESTIONS

Operator: OXY USA INC P.O. Box 4294 Houston, TX 772104294	OGRID: 16696
	Action Number: 448621
	Action Type: [C-141] Remediation Closure Request C-141 (C-141-v-Closure)

QUESTIONS

Prerequisites	
Incident ID (n#)	nAPP2435236546
Incident Name	NAPP2435236546 STERLING SILVER 33 FEDERAL 3 CTB @ 0
Incident Type	Produced Water Release
Incident Status	Remediation Closure Report Received

Location of Release Source	
<i>Please answer all the questions in this group.</i>	
Site Name	Sterling Silver 33 Federal 3 CTB
Date Release Discovered	12/13/2024
Surface Owner	Federal

Incident Details	
<i>Please answer all the questions in this group.</i>	
Incident Type	Produced Water Release
Did this release result in a fire or is the result of a fire	No
Did this release result in any injuries	No
Has this release reached or does it have a reasonable probability of reaching a watercourse	No
Has this release endangered or does it have a reasonable probability of endangering public health	No
Has this release substantially damaged or will it substantially damage property or the environment	No
Is this release of a volume that is or may with reasonable probability be detrimental to fresh water	No

Nature and Volume of Release	
<i>Material(s) released, please answer all that apply below. Any calculations or specific justifications for the volumes provided should be attached to the follow-up C-141 submission.</i>	
Crude Oil Released (bbls) Details	Not answered.
Produced Water Released (bbls) Details	Cause: Human Error Flow Line - Production Produced Water Released: 6 BBL Recovered: 0 BBL Lost: 6 BBL.
Is the concentration of chloride in the produced water >10,000 mg/l	Yes
Condensate Released (bbls) Details	Not answered.
Natural Gas Vented (Mcf) Details	Not answered.
Natural Gas Flared (Mcf) Details	Not answered.
Other Released Details	Not answered.
Are there additional details for the questions above (i.e. any answer containing Other, Specify, Unknown, and/or Fire, or any negative lost amounts)	Not answered.

Sante Fe Main Office
Phone: (505) 476-3441

General Information
Phone: (505) 629-6116

Online Phone Directory
<https://www.emnrd.nm.gov/ocd/contact-us>

State of New Mexico
Energy, Minerals and Natural Resources
Oil Conservation Division
1220 S. St Francis Dr.
Santa Fe, NM 87505

QUESTIONS, Page 2

Action 448621

QUESTIONS (continued)

Operator: OXY USA INC P.O. Box 4294 Houston, TX 772104294	OGRID: 16696
	Action Number: 448621
	Action Type: [C-141] Remediation Closure Request C-141 (C-141-v-Closure)

QUESTIONS

Nature and Volume of Release (continued)	
Is this a gas only submission (i.e. only significant Mcf values reported)	No, according to supplied volumes this does not appear to be a "gas only" report.
Was this a major release as defined by Subsection A of 19.15.29.7 NMAC	No
Reasons why this would be considered a submission for a notification of a major release	<i>Unavailable.</i>
<i>With the implementation of the 19.15.27 NMAC (05/25/2021), venting and/or flaring of natural gas (i.e. gas only) are to be submitted on the C-129 form.</i>	

Initial Response

The responsible party must undertake the following actions immediately unless they could create a safety hazard that would result in injury.

The source of the release has been stopped	True
The impacted area has been secured to protect human health and the environment	True
Released materials have been contained via the use of berms or dikes, absorbent pads, or other containment devices	True
All free liquids and recoverable materials have been removed and managed appropriately	True
If all the actions described above have not been undertaken, explain why	<i>Not answered.</i>

Per Paragraph (4) of Subsection B of 19.15.29.8 NMAC the responsible party may commence remediation immediately after discovery of a release. If remediation has begun, please prepare and attach a narrative of actions to date in the follow-up C-141 submission. If remedial efforts have been successfully completed or if the release occurred within a lined containment area (see Subparagraph (a) of Paragraph (5) of Subsection A of 19.15.29.11 NMAC), please prepare and attach all information needed for closure evaluation in the follow-up C-141 submission.

I hereby certify that the information given above is true and complete to the best of my knowledge and understand that pursuant to OCD rules and regulations all operators are required to report and/or file certain release notifications and perform corrective actions for releases which may endanger public health or the environment. The acceptance of a C-141 report by the OCD does not relieve the operator of liability should their operations have failed to adequately investigate and remediate contamination that pose a threat to groundwater, surface water, human health or the environment. In addition, OCD acceptance of a C-141 report does not relieve the operator of responsibility for compliance with any other federal, state, or local laws and/or regulations.

I hereby agree and sign off to the above statement	Name: Wade Dittrich Title: Environmental Coordinator Email: wade_dittrich@oxy.com Date: 04/03/2025
--	---

Sante Fe Main Office
Phone: (505) 476-3441

General Information
Phone: (505) 629-6116

Online Phone Directory
<https://www.emnrd.nm.gov/ocd/contact-us>

State of New Mexico
Energy, Minerals and Natural Resources
Oil Conservation Division
1220 S. St Francis Dr.
Santa Fe, NM 87505

QUESTIONS, Page 3

Action 448621

QUESTIONS (continued)

Operator: OXY USA INC P.O. Box 4294 Houston, TX 772104294	OGRID: 16696
	Action Number: 448621
	Action Type: [C-141] Remediation Closure Request C-141 (C-141-v-Closure)

QUESTIONS**Site Characterization**

Please answer all the questions in this group (only required when seeking remediation plan approval and beyond). This information must be provided to the appropriate district office no later than 90 days after the release discovery date.

What is the shallowest depth to groundwater beneath the area affected by the release in feet below ground surface (ft bgs)	Between 500 and 1000 (ft.)
What method was used to determine the depth to ground water	NM OSE iWaters Database Search
Did this release impact groundwater or surface water	No
What is the minimum distance, between the closest lateral extents of the release and the following surface areas:	
A continuously flowing watercourse or any other significant watercourse	Between 1 and 5 (mi.)
Any lakebed, sinkhole, or playa lake (measured from the ordinary high-water mark)	Greater than 5 (mi.)
An occupied permanent residence, school, hospital, institution, or church	Greater than 5 (mi.)
A spring or a private domestic fresh water well used by less than five households for domestic or stock watering purposes	Greater than 5 (mi.)
Any other fresh water well or spring	Greater than 5 (mi.)
Incorporated municipal boundaries or a defined municipal fresh water well field	Greater than 5 (mi.)
A wetland	Between 1 and 5 (mi.)
A subsurface mine	Between 1 and 5 (mi.)
An (non-karst) unstable area	Greater than 5 (mi.)
Categorize the risk of this well / site being in a karst geology	Low
A 100-year floodplain	Greater than 5 (mi.)
Did the release impact areas not on an exploration, development, production, or storage site	No

Remediation Plan

Please answer all the questions that apply or are indicated. This information must be provided to the appropriate district office no later than 90 days after the release discovery date.

Requesting a remediation plan approval with this submission	Yes
<i>Attach a comprehensive report demonstrating the lateral and vertical extents of soil contamination associated with the release have been determined, pursuant to 19.15.29.11 NMAC and 19.15.29.13 NMAC.</i>	
Have the lateral and vertical extents of contamination been fully delineated	Yes
Was this release entirely contained within a lined containment area	No

Soil Contamination Sampling: (Provide the highest observable value for each, in milligrams per kilograms.)

Chloride (EPA 300.0 or SM4500 Cl B)	176
TPH (GRO+DRO+MRO) (EPA SW-846 Method 8015M)	0
GRO+DRO (EPA SW-846 Method 8015M)	0
BTEX (EPA SW-846 Method 8021B or 8260B)	0
Benzene (EPA SW-846 Method 8021B or 8260B)	0

Per Subsection B of 19.15.29.11 NMAC unless the site characterization report includes completed efforts at remediation, the report must include a proposed remediation plan in accordance with 19.15.29.12 NMAC, which includes the anticipated timelines for beginning and completing the remediation.

On what estimated date will the remediation commence	01/07/2025
On what date will (or did) the final sampling or liner inspection occur	02/18/2025
On what date will (or was) the remediation complete(d)	05/03/2025
What is the estimated surface area (in square feet) that will be reclaimed	1721
What is the estimated volume (in cubic yards) that will be reclaimed	400
What is the estimated surface area (in square feet) that will be remediated	1721
What is the estimated volume (in cubic yards) that will be remediated	400

These estimated dates and measurements are recognized to be the best guess or calculation at the time of submission and may (be) change(d) over time as more remediation efforts are completed.

The OCD recognizes that proposed remediation measures may have to be minimally adjusted in accordance with the physical realities encountered during remediation. If the responsible party has any need to significantly deviate from the remediation plan proposed, then it should consult with the division to determine if another remediation plan submission is required.

Sante Fe Main Office
Phone: (505) 476-3441

General Information
Phone: (505) 629-6116

Online Phone Directory
<https://www.emnrd.nm.gov/ocd/contact-us>

State of New Mexico
Energy, Minerals and Natural Resources
Oil Conservation Division
1220 S. St Francis Dr.
Santa Fe, NM 87505

QUESTIONS, Page 4

Action 448621

QUESTIONS (continued)

Operator: OXY USA INC P.O. Box 4294 Houston, TX 772104294	OGRID: 16696
	Action Number: 448621
	Action Type: [C-141] Remediation Closure Request C-141 (C-141-v-Closure)

QUESTIONS

Remediation Plan (continued)

Please answer all the questions that apply or are indicated. This information must be provided to the appropriate district office no later than 90 days after the release discovery date.

This remediation will (or is expected to) utilize the following processes to remediate / reduce contaminants:

(Select all answers below that apply.)

(Ex Situ) Excavation and off-site disposal (i.e. dig and haul, hydrovac, etc.)	Yes
Which OCD approved facility will be used for off-site disposal	LEA LAND LANDFILL [fEEM0112342028]
OR which OCD approved well (API) will be used for off-site disposal	Not answered.
OR is the off-site disposal site, to be used, out-of-state	Not answered.
OR is the off-site disposal site, to be used, an NMED facility	Not answered.
(Ex Situ) Excavation and on-site remediation (i.e. On-Site Land Farms)	Not answered.
(In Situ) Soil Vapor Extraction	Not answered.
(In Situ) Chemical processing (i.e. Soil Shredding, Potassium Permanganate, etc.)	Not answered.
(In Situ) Biological processing (i.e. Microbes / Fertilizer, etc.)	Not answered.
(In Situ) Physical processing (i.e. Soil Washing, Gypsum, Disking, etc.)	Not answered.
Ground Water Abatement pursuant to 19.15.30 NMAC	Not answered.
OTHER (Non-listed remedial process)	Not answered.

Per Subsection B of 19.15.29.11 NMAC unless the site characterization report includes completed efforts at remediation, the report must include a proposed remediation plan in accordance with 19.15.29.12 NMAC, which includes the anticipated timelines for beginning and completing the remediation.

I hereby certify that the information given above is true and complete to the best of my knowledge and understand that pursuant to OCD rules and regulations all operators are required to report and/or file certain release notifications and perform corrective actions for releases which may endanger public health or the environment. The acceptance of a C-141 report by the OCD does not relieve the operator of liability should their operations have failed to adequately investigate and remediate contamination that pose a threat to groundwater, surface water, human health or the environment. In addition, OCD acceptance of a C-141 report does not relieve the operator of responsibility for compliance with any other federal, state, or local laws and/or regulations.

I hereby agree and sign off to the above statement	Name: Wade Dittrich Title: Environmental Coordinator Email: wade_dittrich@oxy.com Date: 04/03/2025
--	---

The OCD recognizes that proposed remediation measures may have to be minimally adjusted in accordance with the physical realities encountered during remediation. If the responsible party has any need to significantly deviate from the remediation plan proposed, then it should consult with the division to determine if another remediation plan submission is required.

Sante Fe Main Office
Phone: (505) 476-3441

General Information
Phone: (505) 629-6116

Online Phone Directory
<https://www.emnrd.nm.gov/ocd/contact-us>

State of New Mexico
Energy, Minerals and Natural Resources
Oil Conservation Division
1220 S. St Francis Dr.
Santa Fe, NM 87505

QUESTIONS, Page 5

Action 448621

QUESTIONS (continued)

Operator: OXY USA INC P.O. Box 4294 Houston, TX 772104294	OGRID: 16696
	Action Number: 448621
	Action Type: [C-141] Remediation Closure Request C-141 (C-141-v-Closure)

QUESTIONS

Deferral Requests Only	
<i>Only answer the questions in this group if seeking a deferral upon approval this submission. Each of the following items must be confirmed as part of any request for deferral of remediation.</i>	
Requesting a deferral of the remediation closure due date with the approval of this submission	No

Sante Fe Main Office
Phone: (505) 476-3441

General Information
Phone: (505) 629-6116

Online Phone Directory
<https://www.emnrd.nm.gov/ocd/contact-us>

State of New Mexico
Energy, Minerals and Natural Resources
Oil Conservation Division
1220 S. St Francis Dr.
Santa Fe, NM 87505

QUESTIONS, Page 6

Action 448621

QUESTIONS (continued)

Operator: OXY USA INC P.O. Box 4294 Houston, TX 772104294	OGRID: 16696
	Action Number: 448621
	Action Type: [C-141] Remediation Closure Request C-141 (C-141-v-Closure)

QUESTIONS

Sampling Event Information	
Last sampling notification (C-141N) recorded	431063
Sampling date pursuant to Subparagraph (a) of Paragraph (1) of Subsection D of 19.15.29.12 NMAC	02/18/2025
What was the (estimated) number of samples that were to be gathered	15
What was the sampling surface area in square feet	1749

Remediation Closure Request	
<i>Only answer the questions in this group if seeking remediation closure for this release because all remediation steps have been completed.</i>	
Requesting a remediation closure approval with this submission	Yes
Have the lateral and vertical extents of contamination been fully delineated	Yes
Was this release entirely contained within a lined containment area	No
All areas reasonably needed for production or subsequent drilling operations have been stabilized, returned to the sites existing grade, and have a soil cover that prevents ponding of water, minimizing dust and erosion	Yes
What was the total surface area (in square feet) remediated	1721
What was the total volume (cubic yards) remediated	400
All areas not reasonably needed for production or subsequent drilling operations have been reclaimed to contain a minimum of four feet of non-waste contain earthen material with concentrations less than 600 mg/kg chlorides, 100 mg/kg TPH, 50 mg/kg BTEX, and 10 mg/kg Benzene	Yes
What was the total surface area (in square feet) reclaimed	1721
What was the total volume (in cubic yards) reclaimed	400
Summarize any additional remediation activities not included by answers (above)	NA

The responsible party must attach information demonstrating they have complied with all applicable closure requirements and any conditions or directives of the OCD. This demonstration should be in the form of a comprehensive report (in .pdf format) including a scaled site map, sampling diagrams, relevant field notes, photographs of any excavation prior to backfilling, laboratory data including chain of custody documents of final sampling, and a narrative of the remedial activities. Refer to 19.15.29.12 NMAC.

I hereby certify that the information given above is true and complete to the best of my knowledge and understand that pursuant to OCD rules and regulations all operators are required to report and/or file certain release notifications and perform corrective actions for releases which may endanger public health or the environment. The acceptance of a C-141 report by the OCD does not relieve the operator of liability should their operations have failed to adequately investigate and remediate contamination that pose a threat to groundwater, surface water, human health or the environment. In addition, OCD acceptance of a C-141 report does not relieve the operator of responsibility for compliance with any other federal, state, or local laws and/or regulations. The responsible party acknowledges they must substantially restore, reclaim, and re-vegetate the impacted surface area to the conditions that existed prior to the release or their final land use in accordance with 19.15.29.13 NMAC including notification to the OCD when reclamation and re-vegetation are complete.

I hereby agree and sign off to the above statement	Name: Wade Dittrich Title: Environmental Coordinator Email: wade_dittrich@oxy.com Date: 04/03/2025
--	---

Sante Fe Main Office
Phone: (505) 476-3441

General Information
Phone: (505) 629-6116

Online Phone Directory
<https://www.emnrd.nm.gov/ocd/contact-us>

State of New Mexico
Energy, Minerals and Natural Resources
Oil Conservation Division
1220 S. St Francis Dr.
Santa Fe, NM 87505

QUESTIONS, Page 7

Action 448621

QUESTIONS (continued)

Operator: OXY USA INC P.O. Box 4294 Houston, TX 772104294	OGRID: 16696
	Action Number: 448621
	Action Type: [C-141] Remediation Closure Request C-141 (C-141-v-Closure)

QUESTIONS

Reclamation Report	
<i>Only answer the questions in this group if all reclamation steps have been completed.</i>	
Requesting a reclamation approval with this submission	No

Sante Fe Main Office
Phone: (505) 476-3441

General Information
Phone: (505) 629-6116

Online Phone Directory
<https://www.emnrd.nm.gov/ocd/contact-us>

State of New Mexico
Energy, Minerals and Natural Resources
Oil Conservation Division
1220 S. St Francis Dr.
Santa Fe, NM 87505

CONDITIONS

Action 448621

CONDITIONS

Operator: OXY USA INC P.O. Box 4294 Houston, TX 772104294	OGRID: 16696
	Action Number: 448621
	Action Type: [C-141] Remediation Closure Request C-141 (C-141-v-Closure)

CONDITIONS

Created By	Condition	Condition Date
rhamlet	We have received your Remediation Closure Report for Incident #NAPP2435236546 STERLING SILVER 33 FEDERAL 3 CTB, thank you. This Remediation Closure Report is approved.	4/4/2025

Sante Fe Main Office
Phone: (505) 476-3441

General Information
Phone: (505) 629-6116

Online Phone Directory
<https://www.emnrd.nm.gov/ocd/contact-us>

State of New Mexico
Energy, Minerals and Natural Resources
Oil Conservation Division
1220 S. St Francis Dr.
Santa Fe, NM 87505

QUESTIONS

Action 566572

QUESTIONS

Operator: OXY USA INC P.O. Box 4294 Houston, TX 772104294	OGRID: 16696
	Action Number: 566572
	Action Type: [C-141] Reclamation Report C-141 (C-141-v-Reclamation)

QUESTIONS

Prerequisites	
Incident ID (n#)	nAPP2435236546
Incident Name	NAPP2435236546 STERLING SILVER 33 FEDERAL 3 CTB @ E-33-23S-31E
Incident Type	Produced Water Release
Incident Status	Reclamation Report Received

Location of Release Source	
<i>Please answer all the questions in this group.</i>	
Site Name	Sterling Silver 33 Federal 3 CTB
Date Release Discovered	12/13/2024
Surface Owner	Federal

Incident Details	
<i>Please answer all the questions in this group.</i>	
Incident Type	Produced Water Release
Did this release result in a fire or is the result of a fire	No
Did this release result in any injuries	No
Has this release reached or does it have a reasonable probability of reaching a watercourse	No
Has this release endangered or does it have a reasonable probability of endangering public health	No
Has this release substantially damaged or will it substantially damage property or the environment	No
Is this release of a volume that is or may with reasonable probability be detrimental to fresh water	No

Nature and Volume of Release	
<i>Material(s) released, please answer all that apply below. Any calculations or specific justifications for the volumes provided should be attached to the follow-up C-141 submission.</i>	
Crude Oil Released (bbls) Details	Not answered.
Produced Water Released (bbls) Details	Cause: Human Error Flow Line - Production Produced Water Released: 6 BBL Recovered: 0 BBL Lost: 6 BBL.
Is the concentration of chloride in the produced water >10,000 mg/l	Yes
Condensate Released (bbls) Details	Not answered.
Natural Gas Vented (Mcf) Details	Not answered.
Natural Gas Flared (Mcf) Details	Not answered.
Other Released Details	Not answered.
Are there additional details for the questions above (i.e. any answer containing Other, Specify, Unknown, and/or Fire, or any negative lost amounts)	Not answered.

Sante Fe Main Office
Phone: (505) 476-3441

General Information
Phone: (505) 629-6116

Online Phone Directory
<https://www.emnrd.nm.gov/ocd/contact-us>

**State of New Mexico
Energy, Minerals and Natural Resources
Oil Conservation Division
1220 S. St Francis Dr.
Santa Fe, NM 87505**

QUESTIONS, Page 2

Action 566572

QUESTIONS (continued)

Operator: OXY USA INC P.O. Box 4294 Houston, TX 772104294	OGRID: 16696
	Action Number: 566572
	Action Type: [C-141] Reclamation Report C-141 (C-141-v-Reclamation)

QUESTIONS

Nature and Volume of Release (continued)	
Is this a gas only submission (i.e. only significant Mcf values reported)	No, according to supplied volumes this does not appear to be a "gas only" report.
Was this a major release as defined by Subsection A of 19.15.29.7 NMAC	No
Reasons why this would be considered a submission for a notification of a major release	<i>Unavailable.</i>
<i>With the implementation of the 19.15.27 NMAC (05/25/2021), venting and/or flaring of natural gas (i.e. gas only) are to be submitted on the C-129 form.</i>	

Initial Response

The responsible party must undertake the following actions immediately unless they could create a safety hazard that would result in injury.

The source of the release has been stopped	True
The impacted area has been secured to protect human health and the environment	True
Released materials have been contained via the use of berms or dikes, absorbent pads, or other containment devices	True
All free liquids and recoverable materials have been removed and managed appropriately	True
If all the actions described above have not been undertaken, explain why	<i>Not answered.</i>

Per Paragraph (4) of Subsection B of 19.15.29.8 NMAC the responsible party may commence remediation immediately after discovery of a release. If remediation has begun, please prepare and attach a narrative of actions to date in the follow-up C-141 submission. If remedial efforts have been successfully completed or if the release occurred within a lined containment area (see Subparagraph (a) of Paragraph (5) of Subsection A of 19.15.29.11 NMAC), please prepare and attach all information needed for closure evaluation in the follow-up C-141 submission.

I hereby certify that the information given above is true and complete to the best of my knowledge and understand that pursuant to OCD rules and regulations all operators are required to report and/or file certain release notifications and perform corrective actions for releases which may endanger public health or the environment. The acceptance of a C-141 report by the OCD does not relieve the operator of liability should their operations have failed to adequately investigate and remediate contamination that pose a threat to groundwater, surface water, human health or the environment. In addition, OCD acceptance of a C-141 report does not relieve the operator of responsibility for compliance with any other federal, state, or local laws and/or regulations.

I hereby agree and sign off to the above statement	Name: Ensolum Company Email: Oxy_Midland@ensolum.com Date: 03/25/2026
--	--

Sante Fe Main Office
Phone: (505) 476-3441

General Information
Phone: (505) 629-6116

Online Phone Directory
<https://www.emnrd.nm.gov/ocd/contact-us>

State of New Mexico
Energy, Minerals and Natural Resources
Oil Conservation Division
1220 S. St Francis Dr.
Santa Fe, NM 87505

QUESTIONS, Page 3

Action 566572

QUESTIONS (continued)

Operator: OXY USA INC P.O. Box 4294 Houston, TX 772104294	OGRID: 16696
	Action Number: 566572
	Action Type: [C-141] Reclamation Report C-141 (C-141-v-Reclamation)

QUESTIONS

Site Characterization

Please answer all the questions in this group (only required when seeking remediation plan approval and beyond). This information must be provided to the appropriate district office no later than 90 days after the release discovery date.

What is the shallowest depth to groundwater beneath the area affected by the release in feet below ground surface (ft bgs)	Between 500 and 1000 (ft.)
What method was used to determine the depth to ground water	NM OSE iWaters Database Search
Did this release impact groundwater or surface water	No
What is the minimum distance, between the closest lateral extents of the release and the following surface areas:	
A continuously flowing watercourse or any other significant watercourse	Between 1 and 5 (mi.)
Any lakebed, sinkhole, or playa lake (measured from the ordinary high-water mark)	Greater than 5 (mi.)
An occupied permanent residence, school, hospital, institution, or church	Greater than 5 (mi.)
A spring or a private domestic fresh water well used by less than five households for domestic or stock watering purposes	Greater than 5 (mi.)
Any other fresh water well or spring	Greater than 5 (mi.)
Incorporated municipal boundaries or a defined municipal fresh water well field	Greater than 5 (mi.)
A wetland	Between 1 and 5 (mi.)
A subsurface mine	Between 1 and 5 (mi.)
An (non-karst) unstable area	Greater than 5 (mi.)
Categorize the risk of this well / site being in a karst geology	Low
A 100-year floodplain	Greater than 5 (mi.)
Did the release impact areas not on an exploration, development, production, or storage site	No

Remediation Plan

Please answer all the questions that apply or are indicated. This information must be provided to the appropriate district office no later than 90 days after the release discovery date.

Requesting a remediation plan approval with this submission	Yes
<i>Attach a comprehensive report demonstrating the lateral and vertical extents of soil contamination associated with the release have been determined, pursuant to 19.15.29.11 NMAC and 19.15.29.13 NMAC.</i>	
Have the lateral and vertical extents of contamination been fully delineated	Yes
Was this release entirely contained within a lined containment area	No

Soil Contamination Sampling: (Provide the highest observable value for each, in milligrams per kilograms.)

Chloride (EPA 300.0 or SM4500 Cl B)	176
TPH (GRO+DRO+MRO) (EPA SW-846 Method 8015M)	0
GRO+DRO (EPA SW-846 Method 8015M)	0
BTEX (EPA SW-846 Method 8021B or 8260B)	0
Benzene (EPA SW-846 Method 8021B or 8260B)	0

Per Subsection B of 19.15.29.11 NMAC unless the site characterization report includes completed efforts at remediation, the report must include a proposed remediation plan in accordance with 19.15.29.12 NMAC, which includes the anticipated timelines for beginning and completing the remediation.

On what estimated date will the remediation commence	01/07/2025
On what date will (or did) the final sampling or liner inspection occur	02/18/2025
On what date will (or was) the remediation complete(d)	05/03/2025
What is the estimated surface area (in square feet) that will be reclaimed	1721
What is the estimated volume (in cubic yards) that will be reclaimed	400
What is the estimated surface area (in square feet) that will be remediated	1721
What is the estimated volume (in cubic yards) that will be remediated	400

These estimated dates and measurements are recognized to be the best guess or calculation at the time of submission and may (be) change(d) over time as more remediation efforts are completed.

The OCD recognizes that proposed remediation measures may have to be minimally adjusted in accordance with the physical realities encountered during remediation. If the responsible party has any need to significantly deviate from the remediation plan proposed, then it should consult with the division to determine if another remediation plan submission is required.

Sante Fe Main Office
Phone: (505) 476-3441

General Information
Phone: (505) 629-6116

Online Phone Directory
<https://www.emnrd.nm.gov/ocd/contact-us>

State of New Mexico
Energy, Minerals and Natural Resources
Oil Conservation Division
1220 S. St Francis Dr.
Santa Fe, NM 87505

QUESTIONS, Page 4

Action 566572

QUESTIONS (continued)

Operator: OXY USA INC P.O. Box 4294 Houston, TX 772104294	OGRID: 16696
	Action Number: 566572
	Action Type: [C-141] Reclamation Report C-141 (C-141-v-Reclamation)

QUESTIONS

Remediation Plan (continued)

Please answer all the questions that apply or are indicated. This information must be provided to the appropriate district office no later than 90 days after the release discovery date.

This remediation will (or is expected to) utilize the following processes to remediate / reduce contaminants:

(Select all answers below that apply.)

(Ex Situ) Excavation and off-site disposal (i.e. dig and haul, hydrovac, etc.)	Yes
Which OCD approved facility will be used for off-site disposal	FEEM0112342028 LEA LAND LANDFILL
OR which OCD approved well (API) will be used for off-site disposal	Not answered.
OR is the off-site disposal site, to be used, out-of-state	No
OR is the off-site disposal site, to be used, an NMED facility	No
(Ex Situ) Excavation and on-site remediation (i.e. On-Site Land Farms)	No
(In Situ) Soil Vapor Extraction	No
(In Situ) Chemical processing (i.e. Soil Shredding, Potassium Permanganate, etc.)	No
(In Situ) Biological processing (i.e. Microbes / Fertilizer, etc.)	No
(In Situ) Physical processing (i.e. Soil Washing, Gypsum, Disking, etc.)	No
Ground Water Abatement pursuant to 19.15.30 NMAC	No
OTHER (Non-listed remedial process)	No

Per Subsection B of 19.15.29.11 NMAC unless the site characterization report includes completed efforts at remediation, the report must include a proposed remediation plan in accordance with 19.15.29.12 NMAC, which includes the anticipated timelines for beginning and completing the remediation.

I hereby certify that the information given above is true and complete to the best of my knowledge and understand that pursuant to OCD rules and regulations all operators are required to report and/or file certain release notifications and perform corrective actions for releases which may endanger public health or the environment. The acceptance of a C-141 report by the OCD does not relieve the operator of liability should their operations have failed to adequately investigate and remediate contamination that pose a threat to groundwater, surface water, human health or the environment. In addition, OCD acceptance of a C-141 report does not relieve the operator of responsibility for compliance with any other federal, state, or local laws and/or regulations.

I hereby agree and sign off to the above statement	Name: Ensolum Company Email: Oxy_Midland@ensolum.com Date: 03/25/2026
--	---

The OCD recognizes that proposed remediation measures may have to be minimally adjusted in accordance with the physical realities encountered during remediation. If the responsible party has any need to significantly deviate from the remediation plan proposed, then it should consult with the division to determine if another remediation plan submission is required.

Sante Fe Main Office
Phone: (505) 476-3441

General Information
Phone: (505) 629-6116

Online Phone Directory
<https://www.emnrd.nm.gov/ocd/contact-us>

State of New Mexico
Energy, Minerals and Natural Resources
Oil Conservation Division
1220 S. St Francis Dr.
Santa Fe, NM 87505

QUESTIONS, Page 5

Action 566572

QUESTIONS (continued)

Operator: OXY USA INC P.O. Box 4294 Houston, TX 772104294	OGRID: 16696
	Action Number: 566572
	Action Type: [C-141] Reclamation Report C-141 (C-141-v-Reclamation)

QUESTIONS

Deferral Requests Only	
<i>Only answer the questions in this group if seeking a deferral upon approval this submission. Each of the following items must be confirmed as part of any request for deferral of remediation.</i>	
Requesting a deferral of the remediation closure due date with the approval of this submission	No

Sante Fe Main Office
Phone: (505) 476-3441

General Information
Phone: (505) 629-6116

Online Phone Directory
<https://www.emnrd.nm.gov/ocd/contact-us>

State of New Mexico
Energy, Minerals and Natural Resources
Oil Conservation Division
1220 S. St Francis Dr.
Santa Fe, NM 87505

QUESTIONS, Page 6

Action 566572

QUESTIONS (continued)

Operator: OXY USA INC P.O. Box 4294 Houston, TX 772104294	OGRID: 16696
	Action Number: 566572
	Action Type: [C-141] Reclamation Report C-141 (C-141-v-Reclamation)

QUESTIONS

Sampling Event Information	
Last sampling notification (C-141N) recorded	431063
Sampling date pursuant to Subparagraph (a) of Paragraph (1) of Subsection D of 19.15.29.12 NMAC	02/18/2025
What was the (estimated) number of samples that were to be gathered	15
What was the sampling surface area in square feet	1749

Remediation Closure Request	
<i>Only answer the questions in this group if seeking remediation closure for this release because all remediation steps have been completed.</i>	
Requesting a remediation closure approval with this submission	Yes
Have the lateral and vertical extents of contamination been fully delineated	Yes
Was this release entirely contained within a lined containment area	No
All areas reasonably needed for production or subsequent drilling operations have been stabilized, returned to the sites existing grade, and have a soil cover that prevents ponding of water, minimizing dust and erosion	Yes
What was the total surface area (in square feet) remediated	1721
What was the total volume (cubic yards) remediated	400
All areas not reasonably needed for production or subsequent drilling operations have been reclaimed to contain a minimum of four feet of non-waste contain earthen material with concentrations less than 600 mg/kg chlorides, 100 mg/kg TPH, 50 mg/kg BTEX, and 10 mg/kg Benzene	Yes
What was the total surface area (in square feet) reclaimed	1721
What was the total volume (in cubic yards) reclaimed	400
Summarize any additional remediation activities not included by answers (above)	NA

The responsible party must attach information demonstrating they have complied with all applicable closure requirements and any conditions or directives of the OCD. This demonstration should be in the form of a comprehensive report (in .pdf format) including a scaled site map, sampling diagrams, relevant field notes, photographs of any excavation prior to backfilling, laboratory data including chain of custody documents of final sampling, and a narrative of the remedial activities. Refer to 19.15.29.12 NMAC.

I hereby certify that the information given above is true and complete to the best of my knowledge and understand that pursuant to OCD rules and regulations all operators are required to report and/or file certain release notifications and perform corrective actions for releases which may endanger public health or the environment. The acceptance of a C-141 report by the OCD does not relieve the operator of liability should their operations have failed to adequately investigate and remediate contamination that pose a threat to groundwater, surface water, human health or the environment. In addition, OCD acceptance of a C-141 report does not relieve the operator of responsibility for compliance with any other federal, state, or local laws and/or regulations. The responsible party acknowledges they must substantially restore, reclaim, and re-vegetate the impacted surface area to the conditions that existed prior to the release or their final land use in accordance with 19.15.29.13 NMAC including notification to the OCD when reclamation and re-vegetation are complete.

I hereby agree and sign off to the above statement	Name: Ensolum Company Email: Oxy_Midland@ensolum.com Date: 03/25/2026
--	---

Sante Fe Main Office
Phone: (505) 476-3441

General Information
Phone: (505) 629-6116

Online Phone Directory
<https://www.emnrd.nm.gov/ocd/contact-us>

State of New Mexico
Energy, Minerals and Natural Resources
Oil Conservation Division
1220 S. St Francis Dr.
Santa Fe, NM 87505

QUESTIONS, Page 7

Action 566572

QUESTIONS (continued)

Operator: OXY USA INC P.O. Box 4294 Houston, TX 772104294	OGRID: 16696
	Action Number: 566572
	Action Type: [C-141] Reclamation Report C-141 (C-141-v-Reclamation)

QUESTIONS

Reclamation Report

Only answer the questions in this group if all reclamation steps have been completed.

Requesting a reclamation approval with this submission	Yes
What was the total reclamation surface area (in square feet) for this site	1721
What was the total volume of replacement material (in cubic yards) for this site	400

Per Paragraph (1) of Subsection D of 19.15.29.13 NMAC the reclamation must contain a minimum of four feet of non-waste containing, uncontaminated, earthen material with chloride concentrations less than 600 mg/kg as analyzed by EPA Method 300.0, or other test methods approved by the division. The soil cover must include a top layer, which is either the background thickness of topsoil or one foot of suitable material to establish vegetation at the site, whichever is greater.

Is the soil top layer complete and is it suitable material to establish vegetation	Yes
On what (estimated) date will (or was) the reseeded commence(d)	08/04/2025

Summarize any additional reclamation activities not included by answers (above)	NA
---	----

The responsible party must attach information demonstrating they have complied with all applicable reclamation requirements and any conditions or directives of the OCD. This demonstration should be in the form of attachments (in .pdf format) including a scaled site map, any proposed reseeded plans or relevant field notes, photographs of reclaimed area, and a narrative of the reclamation activities. Refer to 19.15.29.13 NMAC.

I hereby certify that the information given above is true and complete to the best of my knowledge and understand that pursuant to OCD rules and regulations all operators are required to report and/or file certain release notifications and perform corrective actions for releases which may endanger public health or the environment. The acceptance of a C-141 report by the OCD does not relieve the operator of liability should their operations have failed to adequately investigate and remediate contamination that pose a threat to groundwater, surface water, human health or the environment. In addition, OCD acceptance of a C-141 report does not relieve the operator of responsibility for compliance with any other federal, state, or local laws and/or regulations. The responsible party acknowledges they must substantially restore, reclaim, and re-vegetate the impacted surface area to the conditions that existed prior to the release or their final land use in accordance with 19.15.29.13 NMAC including notification to the OCD when reclamation and re-vegetation are complete.

I hereby agree and sign off to the above statement	Name: Ensolum Company Email: Oxy_Midland@ensolum.com Date: 03/25/2026
--	---

Sante Fe Main Office
Phone: (505) 476-3441

General Information
Phone: (505) 629-6116

Online Phone Directory
<https://www.emnrd.nm.gov/ocd/contact-us>

State of New Mexico
Energy, Minerals and Natural Resources
Oil Conservation Division
1220 S. St Francis Dr.
Santa Fe, NM 87505

QUESTIONS, Page 8

Action 566572

QUESTIONS (continued)

Operator: OXY USA INC P.O. Box 4294 Houston, TX 772104294	OGRID: 16696
	Action Number: 566572
	Action Type: [C-141] Reclamation Report C-141 (C-141-v-Reclamation)

QUESTIONS

Revegetation Report	
<i>Only answer the questions in this group if all surface restoration, reclamation and re-vegetation obligations have been satisfied.</i>	
Requesting a restoration complete approval with this submission	No
<i>Per Paragraph (4) of Subsection (D) of 19.15.29.13 NMAC for any major or minor release containing liquids, the responsible party must notify the division when reclamation and re-vegetation are complete.</i>	

Sante Fe Main Office
Phone: (505) 476-3441

General Information
Phone: (505) 629-6116

Online Phone Directory
<https://www.emnrd.nm.gov/ocd/contact-us>

State of New Mexico
Energy, Minerals and Natural Resources
Oil Conservation Division
1220 S. St Francis Dr.
Santa Fe, NM 87505

CONDITIONS

Action 566572

CONDITIONS

Operator: OXY USA INC P.O. Box 4294 Houston, TX 772104294	OGRID: 16696
	Action Number: 566572
	Action Type: [C-141] Reclamation Report C-141 (C-141-v-Reclamation)

CONDITIONS

Created By	Condition	Condition Date
rhamlet	We have received your Reclamation Report for Incident #nAPP2435236546 Sterling Silver 33 Federal 3 CTB, thank you. This Reclamation Report is approved.	4/29/2026