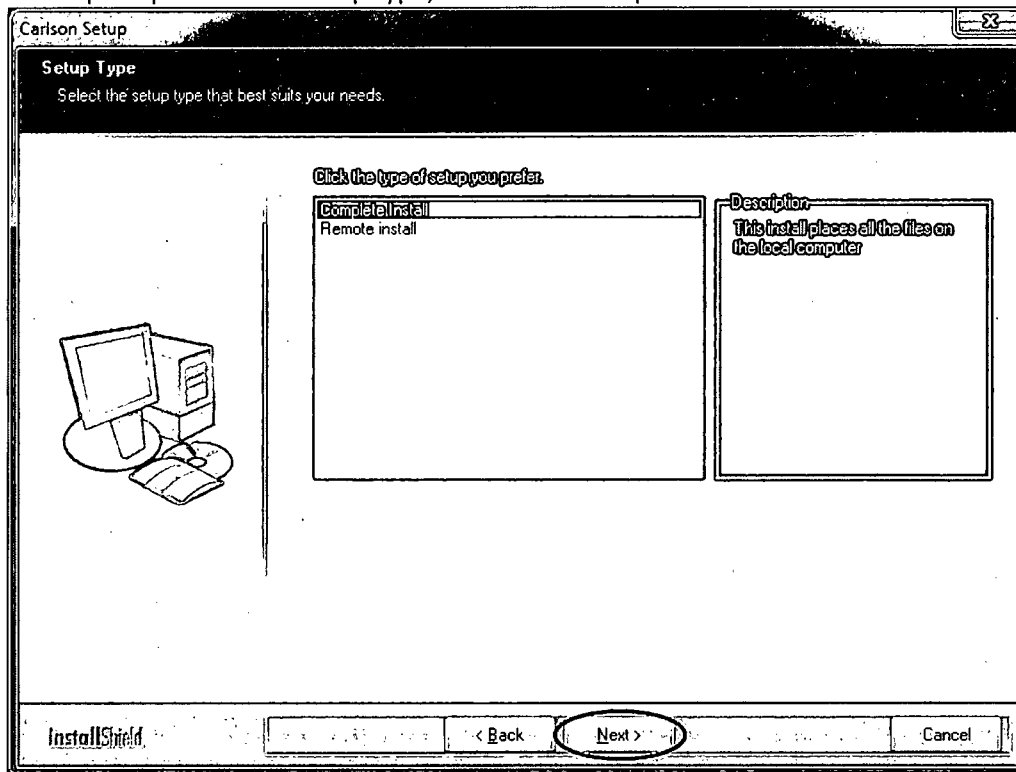
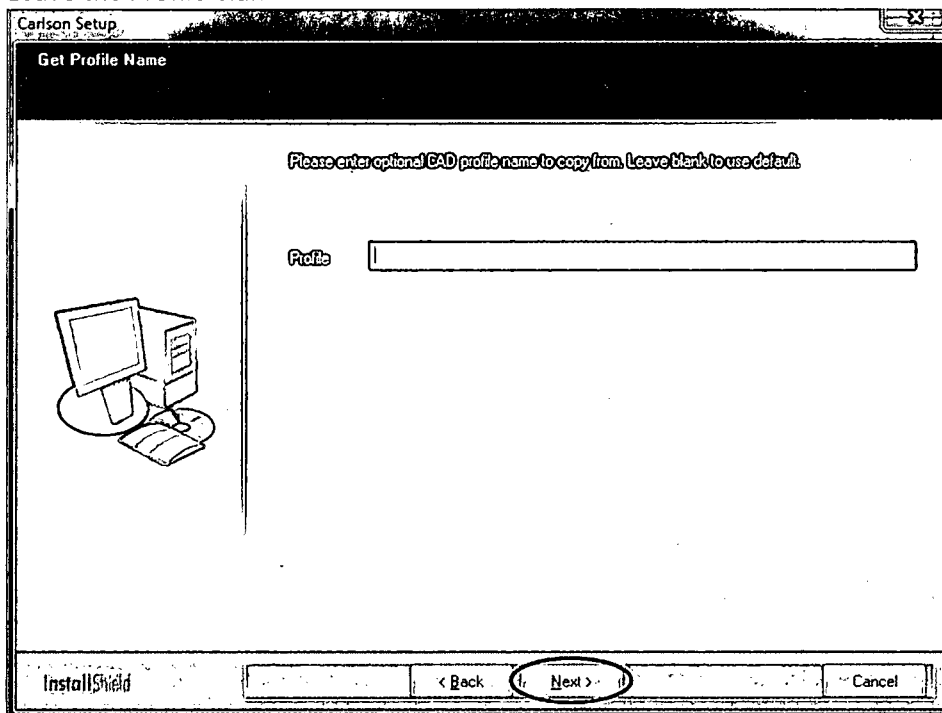


When prompted for the setup type, choose the Complete Install

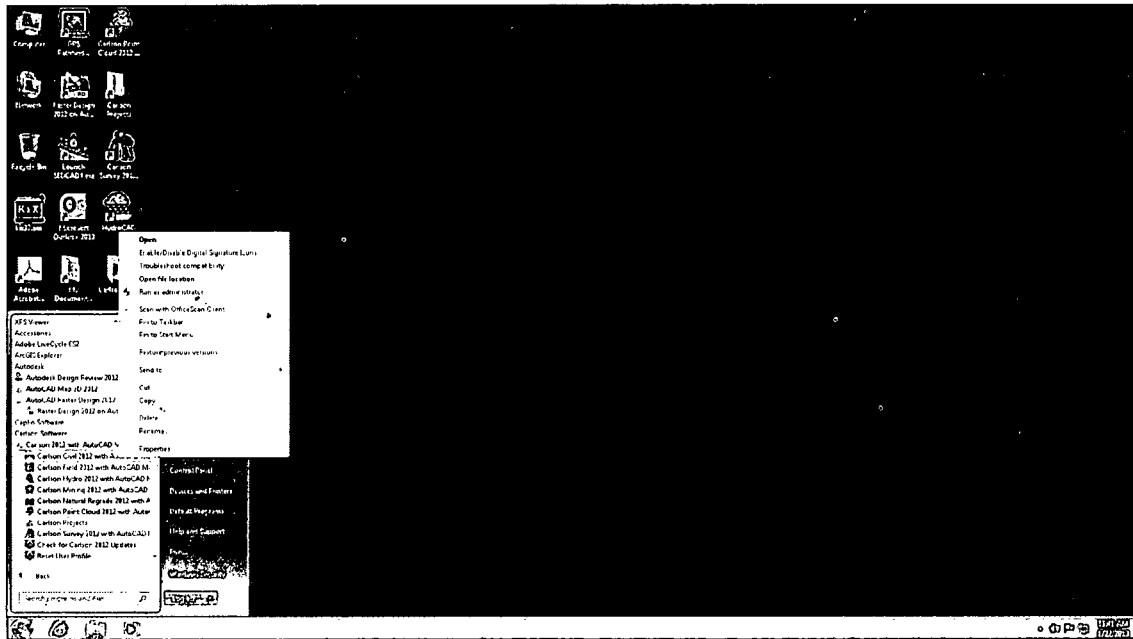


Leave the Profile blank



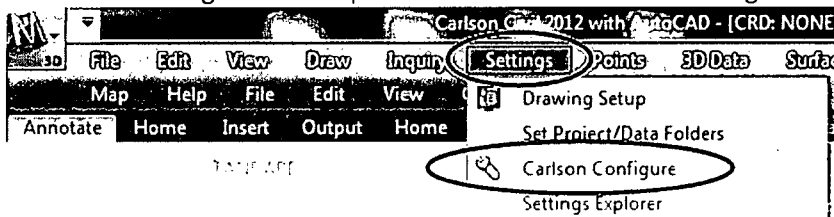
Click Next and finish the install

Important: Launch Carlson 2012 by right clicking Carlson Civil 2012 and running as Administrator. Run as Administrator even through you may be logged in as Administrator. Verify there are no licensing errors.
**This program involves user profile specific features. Please have the user Run as Administrator the first time they launch the application. If this is not performed, the application may appear to launch and then close.*

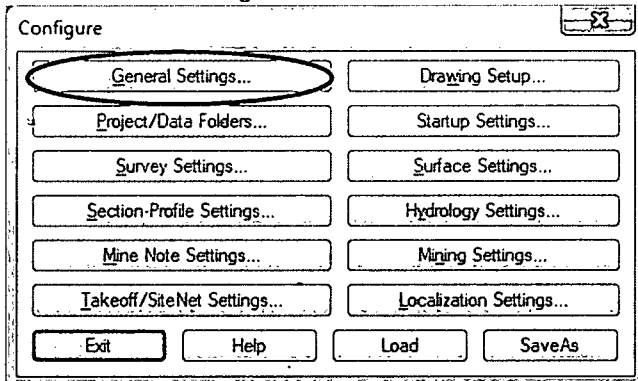


8. Set 'AutoCAD Map Classic' Menu:

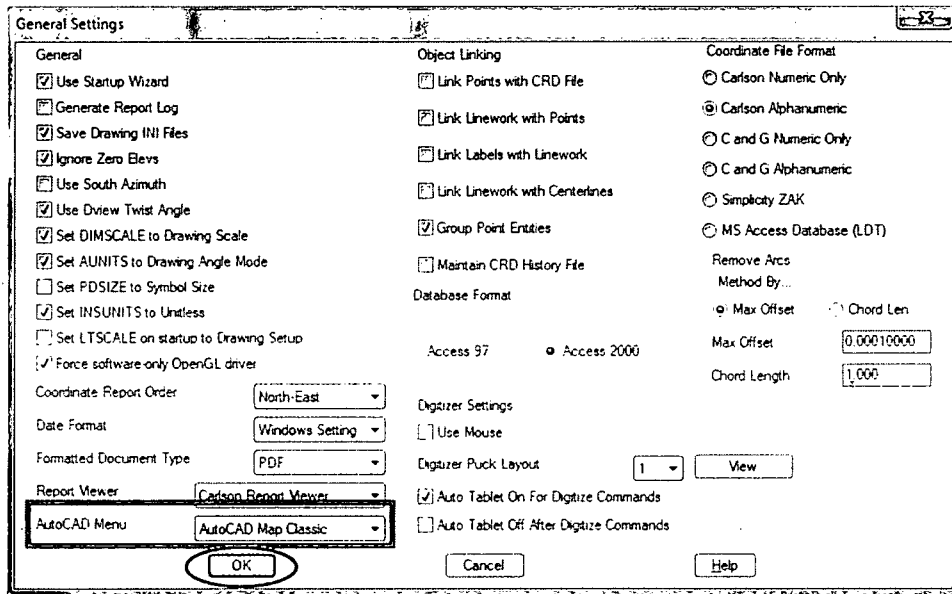
Set / verify that Carlson 2012 is set to open to the AutoCAD Map Classic menu.
 Select the Settings menu dropdown and click on Carlson Configure...



Click General Settings...



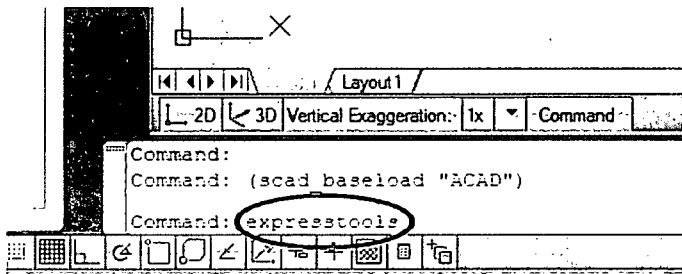
Verify / select AutoCAD Map Classic as the setting for AutoCAD Menu.
Click OK to continue.



Click Exit to close Carlson 2012 configuration.

9. Express Menu:

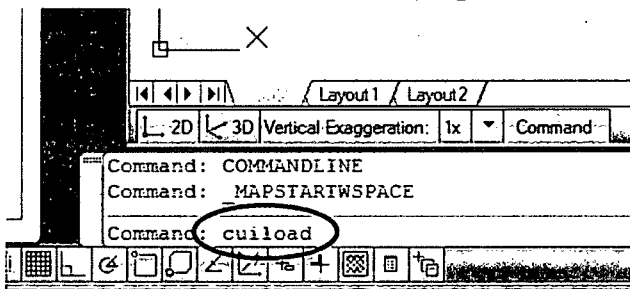
To restore the Express menu, simply enter expresstools on the program command line and press Enter



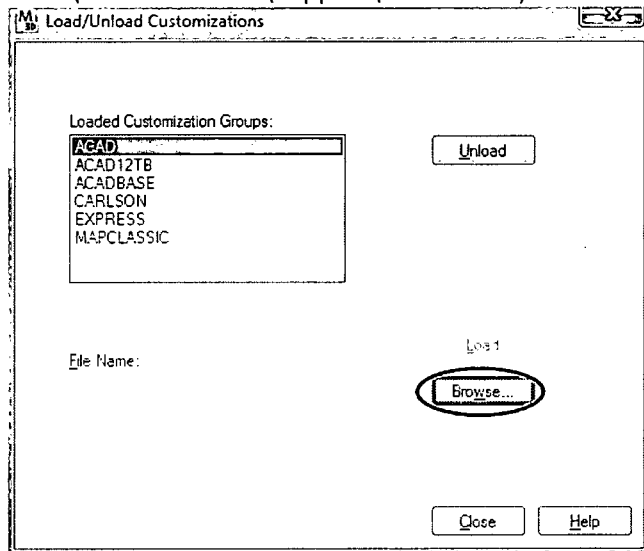
10. Raster Menu:

Restoration of the Raster menu is necessary only if AutoCAD Raster Design 2012 has been installed. If Raster Design has not been installed, please skip

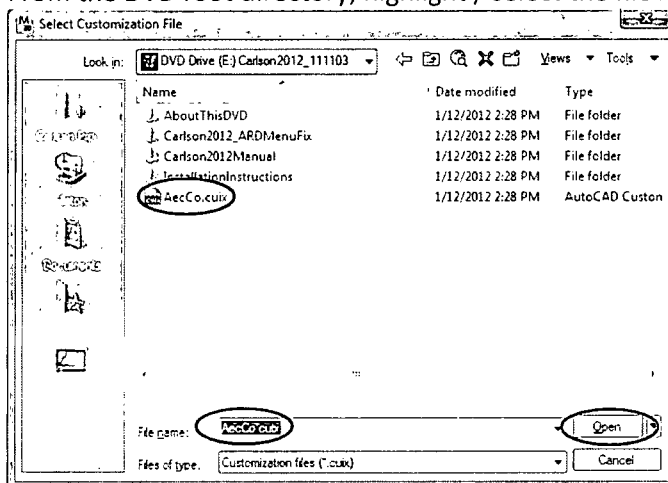
Enter cuiload or menuload on the program command line and press Enter



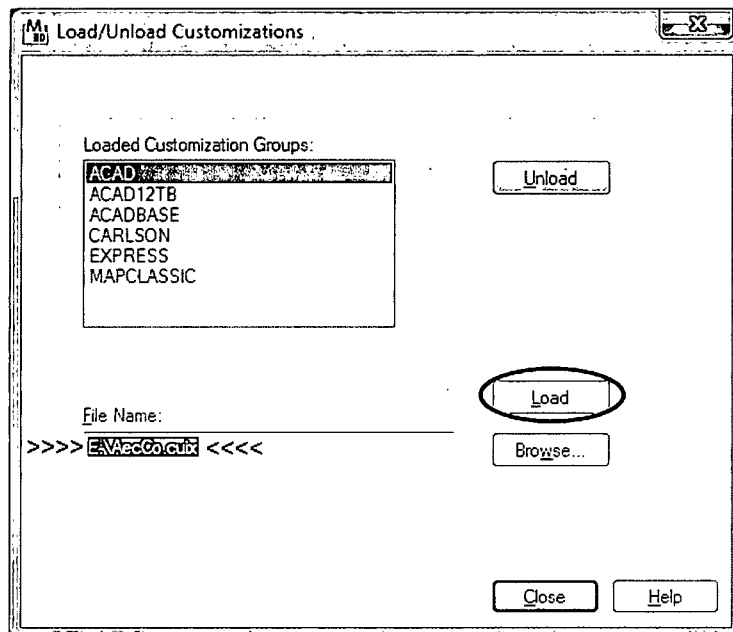
Use Browse to navigate to the AutoCAD Raster Design 2012 program Support folder (The default path would be C:\Program Files\Autodesk\AutoCAD Raster Design 2012\UserDataCache\Support\AecCo.cuix.)



From the DVD root directory, highlight / select the file AecCo.cuix, and click Open.

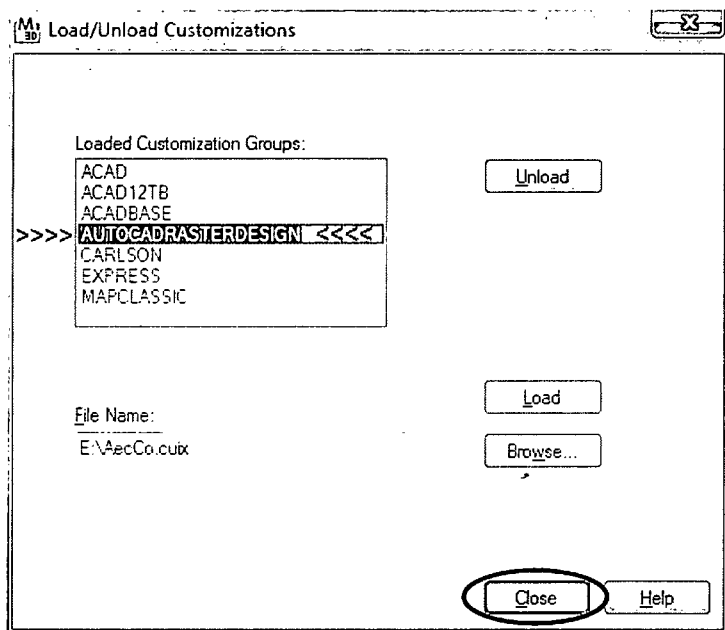


Note that the path to AecCo.cuix is shown.
Click Load to complete the menu load.

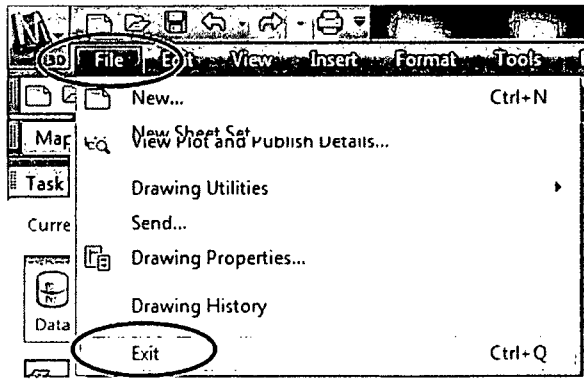


*You may get a message the file is already loaded. If so go ahead and exit out of the load/unload customization screen.

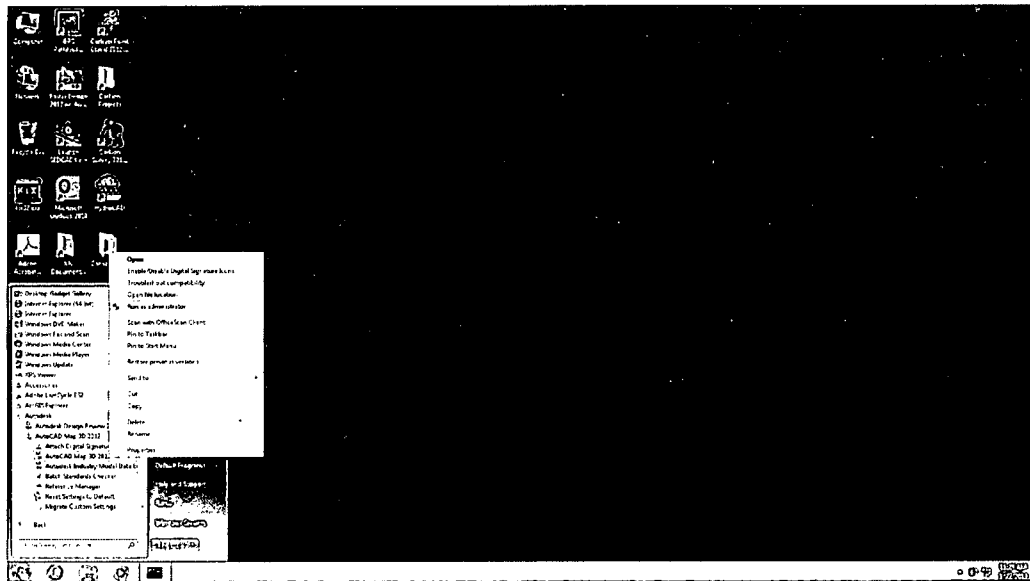
Note that AUTOCADRASTERDESIGN is now included in the list of Loaded Customization Groups. Click Close to exit the cuiload routine.



Go to the File menu dropdown and click Exit to close the program (Click No when prompted to save the drawing file).

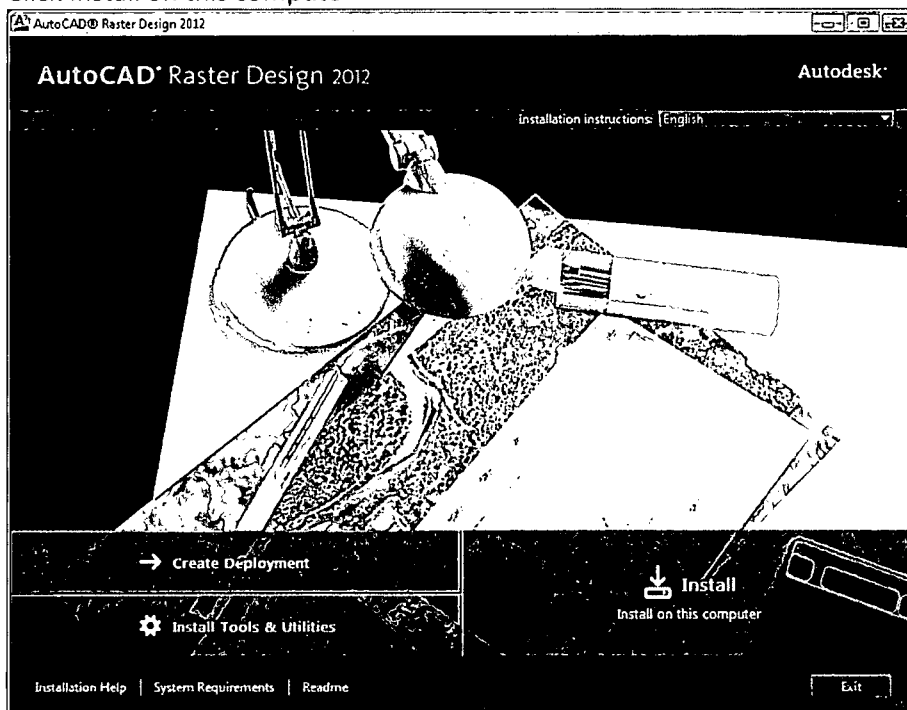


This completes installation and initial setup of Carlson Software 2012.



4. Install 2012 AutoCAD Raster Design

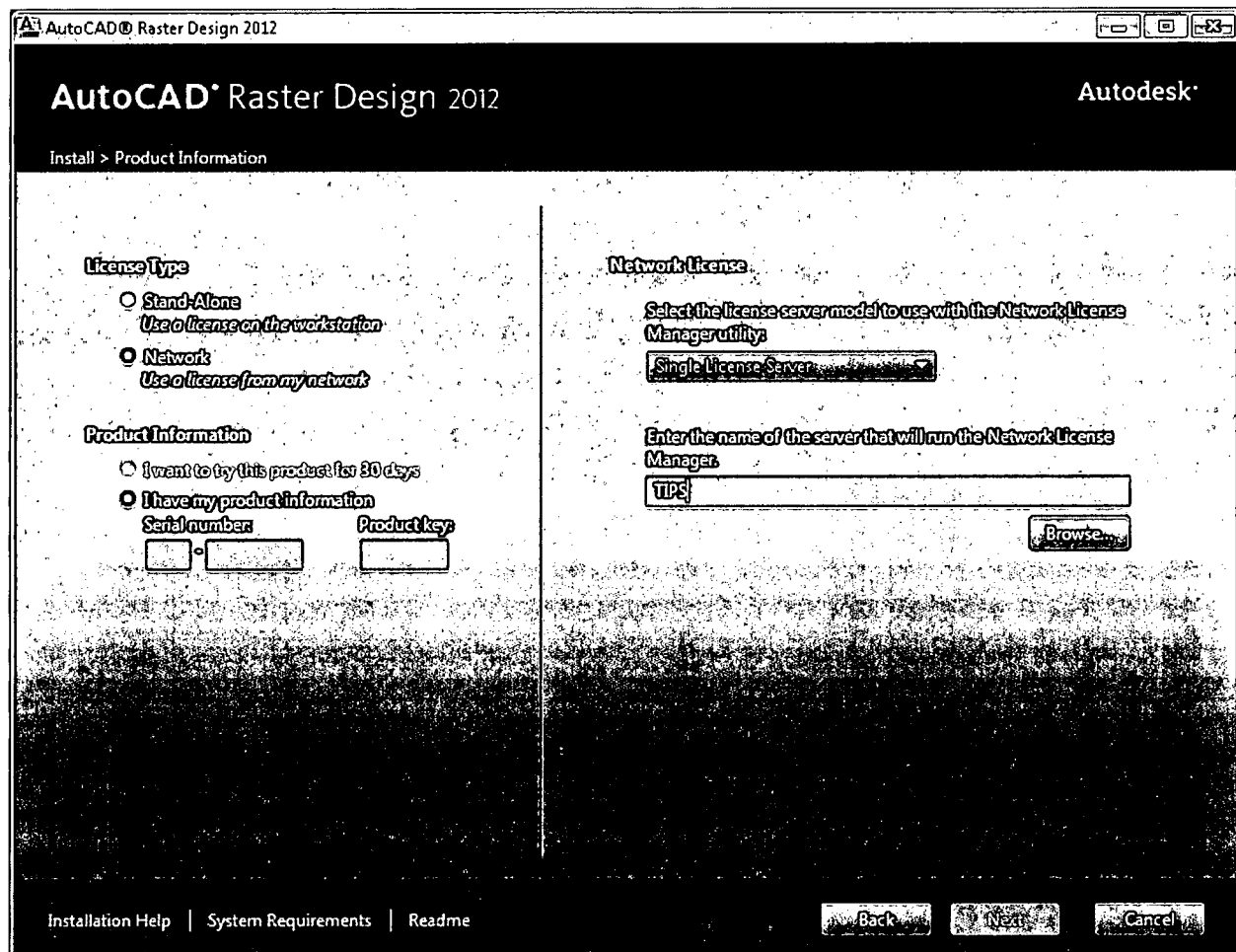
Use 2012 AutoCAD Raster Design serial number and configure network license as 2012 AutoCAD Map 3D
 S:\CD\MMD\AutoCAD Raster Design 2012
 Click Install on this computer



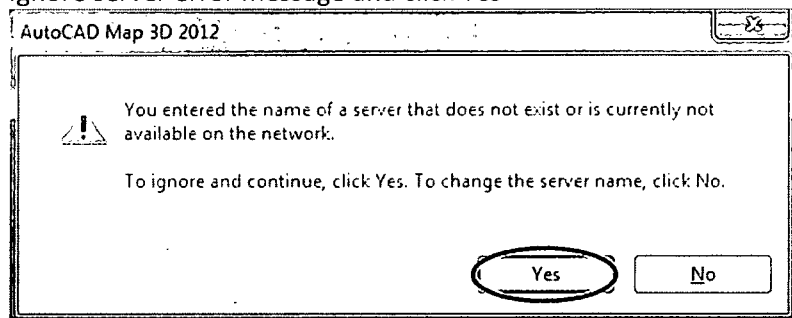
Under License Type, click Network, type in the serial number and product key. The license number is located in the same folder as the install.

Under Network License, click Single License Server from drop down menu

In the field under, "Enter the name of the server that will run the Network License Manager," type in "TIPS." Click Next



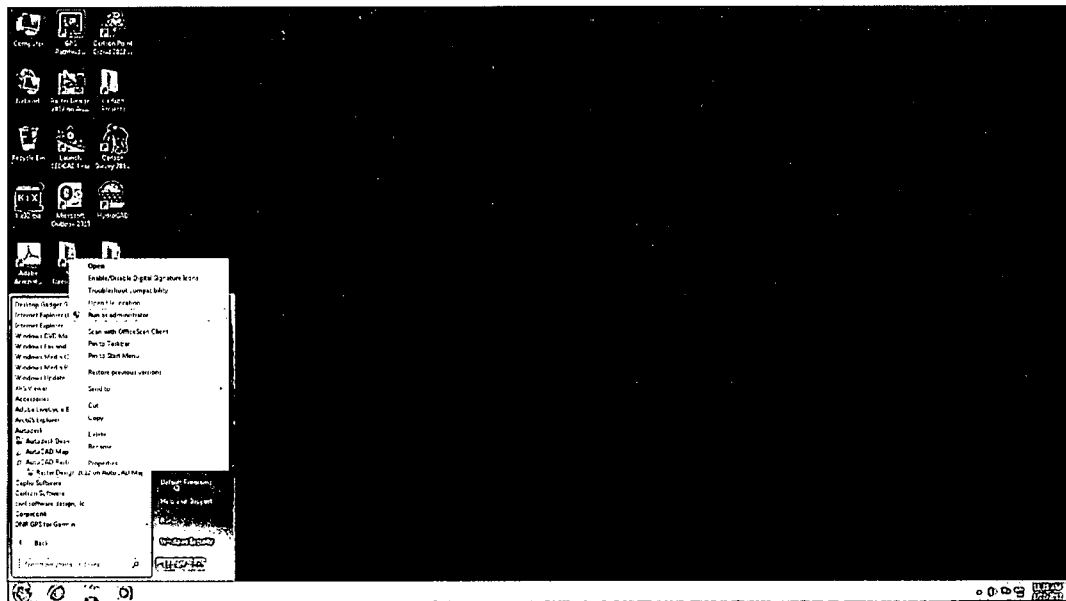
Ignore server error message and click Yes



Click Install

Important: Launch 2012 AutoCAD Raster Design by right clicking 2012 AutoCAD Raster Design and running as Administrator. Run as Administrator even through you may be logged in as Administrator. Verify there are no licensing errors.

**This program involves user profile specific features. Please have the user Run as Administrator the first time they launch the application.*



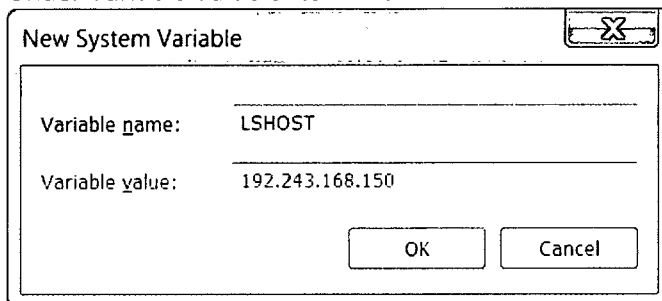
5. Setup environmental variables for Carlson 2012

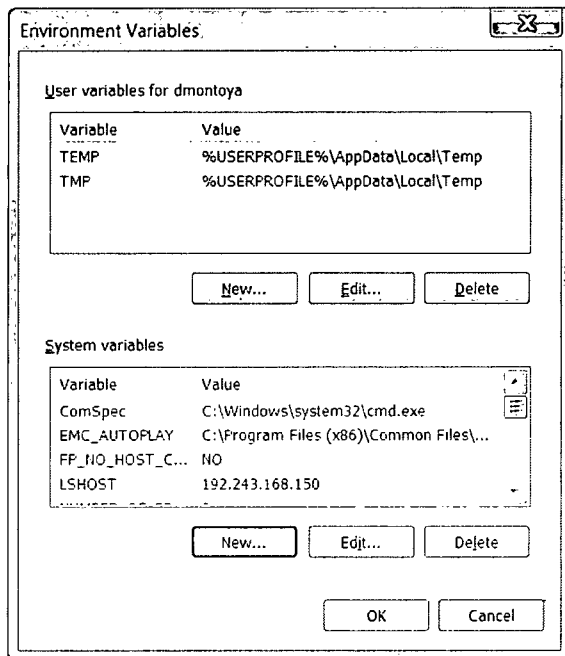
Navigate to Start Menu -> Control Panel -> System to open the System Properties window (In Windows 7, Start Menu -> Control Panel -> System->Advanced System Settings).

On the System Properties window, select the Advanced tab and click Environment Variables.

Click New and under Variable Name enter "LSHOST"

Under Variable Value enter in 192.243.168.150





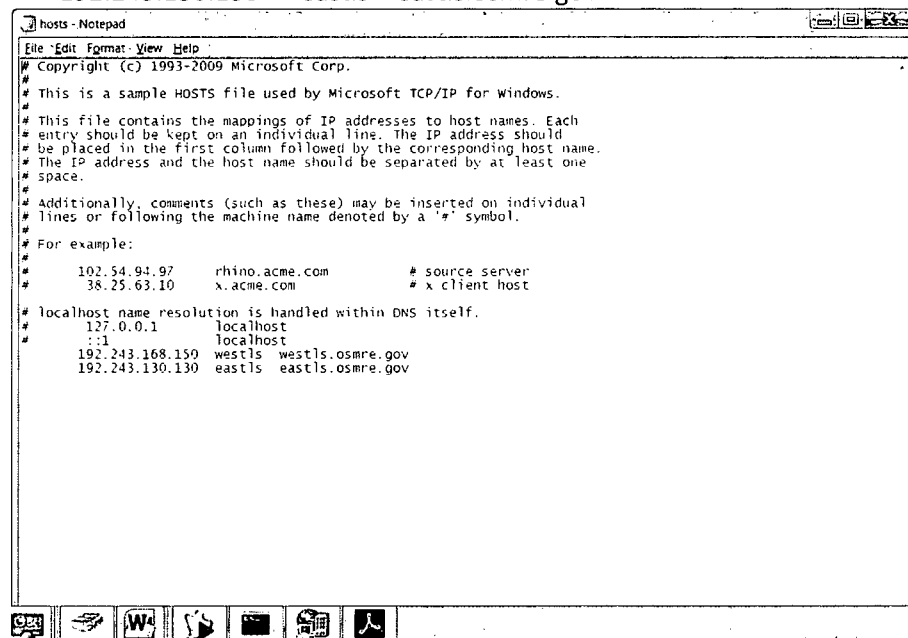
After speaking with Tom Mastaller regarding the Environment Variables, we should only use the West address at this time. Currently, there is an issue with it communicating with both addresses. This will be addressed and communicated in the future.

6. Edit Hosts file for Carlson with Notepad:

C:\Windows\System32\drivers\etc >hosts

Add the following addresses to the bottom of the hosts file:

```
192.243.168.150 westls westls.osmre.gov
192.243.130.130 eastls eastls.osmre.gov
```

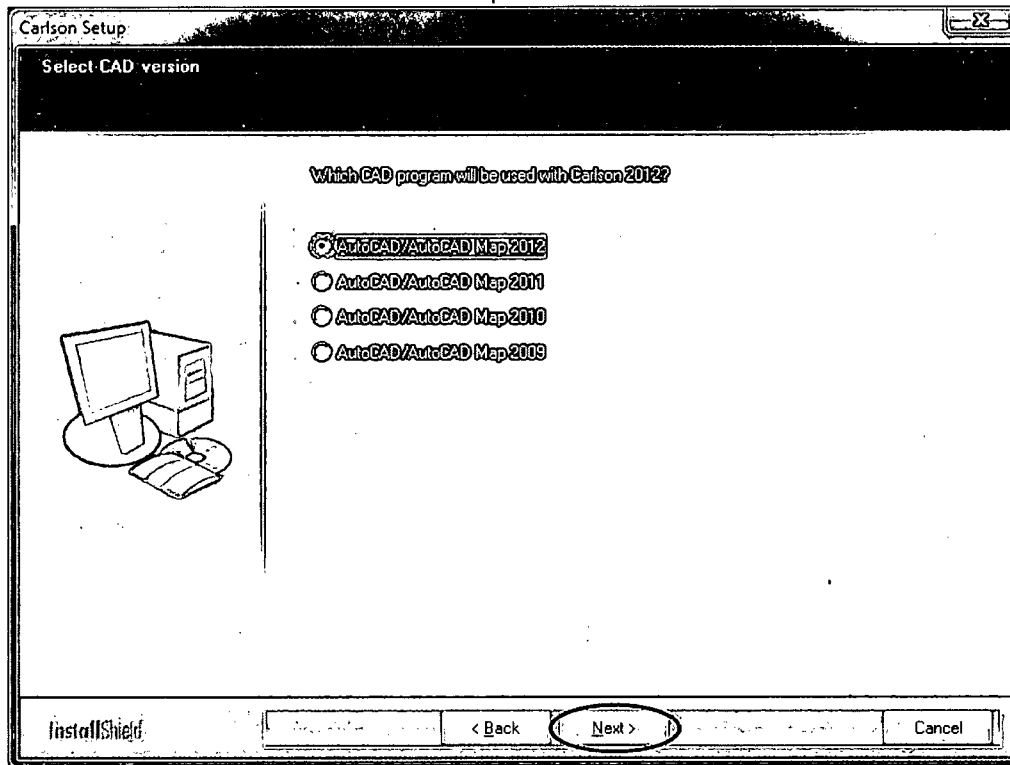


Save changes and exit.

7. Install Carlson 2012 S:\CD\MMD\CarlsonSoftware2012

*Accept all defaults

Select the 64-bit version of AutoCAD Map 2012



Enter in the serial number:

