

State of New Mexico
Energy, Minerals and Natural Resources
Oil Conservation Division
1220 S. St Francis Dr.
Santa Fe, NM 87505

APPLICATION FOR PERMIT TO DRILL, RE-ENTER, DEEPEN, PLUGBACK, OR ADD A ZONE

1. Operator Name and Address CONOCOPHILLIPS COMPANY 3401 E. 30TH STREET FARMINGTON , NM 87402		2. OGRID Number 217817
		3. API Number 30-045-33899
4. Property Code 31329	5. Property Name SAN JUAN 32 7 UNIT	6. Well No. 036F

7. Surface Location

UL - Lot	Section	Township	Range	Lot Idn	Feet From	N/S Line	Feet From	E/W Line	County
E	8	32N	07W	4	660	N	1050	W	SAN JUAN

8. Pool Information

BASIN DAKOTA (PRORATED GAS)	71599
BLANCO-MESAVERDE (PRORATED GAS)	72319

Additional Well Information

9. Work Type New Well	10. Well Type GAS	11. Cable/Rotary	12. Lease Type Private	13. Ground Level Elevation 6223
14. Multiple Y	15. Proposed Depth 7839	16. Formation Dakota Formation	17. Contractor	18. Spud Date
Depth to Ground water 40		Distance from nearest fresh water well > 1000		Distance to nearest surface water > 1000
Pit: Liner: Synthetic <input checked="" type="checkbox"/> 12 _____ mils thick Clay <input type="checkbox"/> Pit Volume: 440 _____ bbls Drilling Method: Closed Loop System <input type="checkbox"/> Fresh Water <input checked="" type="checkbox"/> Brine <input type="checkbox"/> Diesel/Oil-based <input type="checkbox"/> Gas/Air <input type="checkbox"/>				

19. Proposed Casing and Cement Program

Type	Hole Size	Casing Type	Casing Weight/ft	Setting Depth	Sacks of Cement	Estimated TOC
Surf	12.25	9.625	32.3	235	143	0
Int1	8.75	7	20	3389	357	0
Prod	6.25	4.5	11.6	7839	489	3289

Casing/Cement Program: Additional Comments

If the 9-5/8" surface casing is pre-set drilled (Mote) will cement with 75 sx Type 1-2 cement w/20% flyash mixed @ 1.61 cf/sx. Will bring cement to surface. Wait on cement for 24 hours for pre-set holes before pressure testing or drilling out. If H&P rig is used to drill the well, will use a 13-1/2" surface hole and then will adjust cement to insure cement gets circulated to surface.

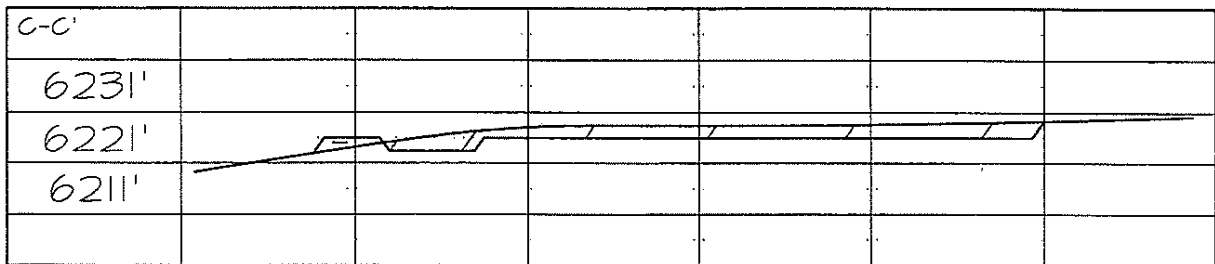
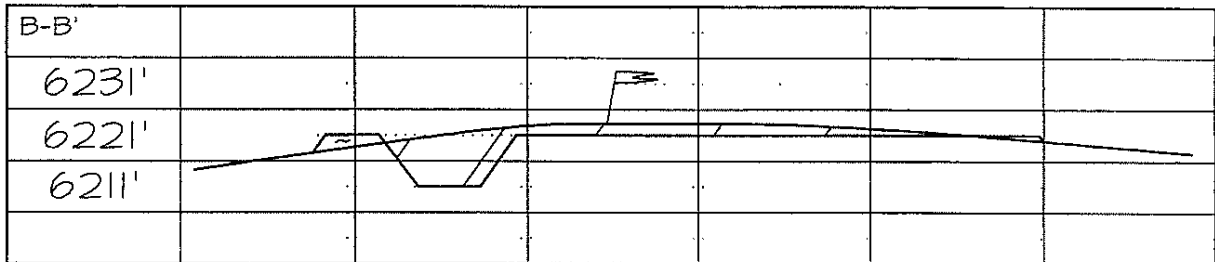
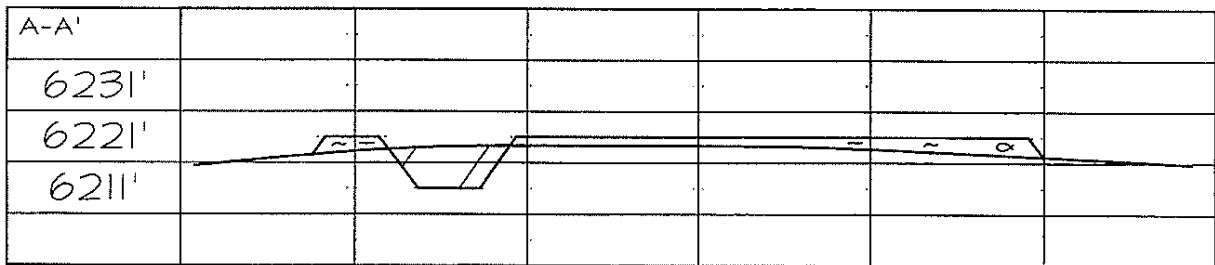
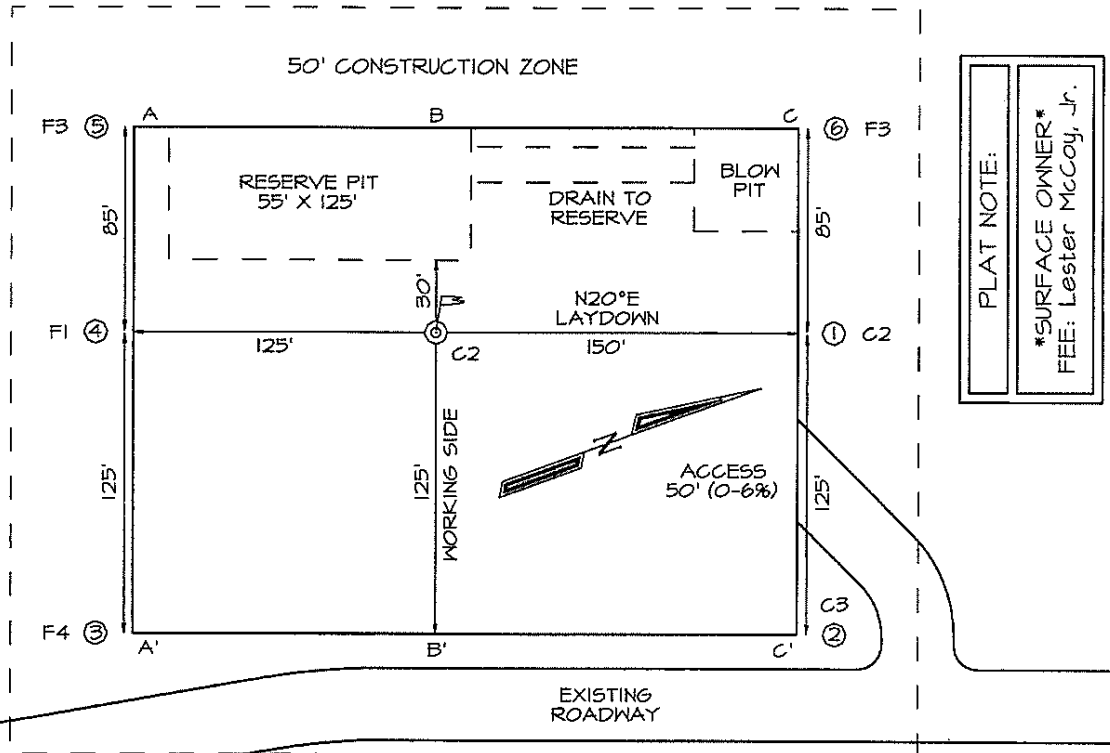
Proposed Blowout Prevention Program

Type	Working Pressure	Test Pressure	Manufacturer
DoubleRam	2000	2000	Schafer

I hereby certify that the information given above is true and complete to the best of my knowledge and belief. I further certify that the drilling pit will be constructed according to NMOCD guidelines <input type="checkbox"/> a general permit <input checked="" type="checkbox"/> or an (attached) alternative OCD-approved plan <input type="checkbox"/> .	OIL CONSERVATION DIVISION	
Printed Name: Electronically filed by Juanita Farrell	Approved By: Charlie Perrin	
Title: Regulatory Analyst	Title: District Supervisor	
Email Address: juanita.r.farrell@conocophillips.com	Approved Date: 8/31/2006	Expiration Date: 8/31/2007
Date: 8/29/2006	Phone: 505-599-3419	

CONOCOPHILLIPS COMPANY SAN JUAN 32-7 UNIT #36F
660' FNL & 1050' FWL, SECTION 8, T32N, R7W, NMPM
SAN JUAN COUNTY, NEW MEXICO ELEVATION: 6223'

LATITUDE: 36.99816° N
 LONGITUDE: 107.59551° W
 DATUM: NAD1983



District I
PO Box 1980, Hobbs, NM 88241-1980

District II
PO Drawer DD, Artesia, NM 88211-0719

District III
1000 Rio Brazos Rd., Aztec, NM 87410

District IV
PO Box 2088, Santa Fe, NM 87504-2088

State of New Mexico
Energy, Minerals & Natural Resources Department

OIL CONSERVATION DIVISION
PO Box 2088
Santa Fe, NM 87504-2088

Form C-102
Revised February 21, 1994
Instructions on back
Submit to Appropriate District Office
State Lease - 4 Copies
Fee Lease - 3 Copies

☐ AMENDED REPORT

WELL LOCATION AND ACREAGE DEDICATION PLAT

*API Number		*Pool Code 72319 / 71599		*Pool Name BLANCO MESAVERDE / BASIN DAKOTA	
*Property Code 31329		*Property Name SAN JUAN 32-7 UNIT			*Well Number 36F
*GRID No 217817		*Operator Name CONOCOPHILLIPS COMPANY			*Elevation 6223'

¹⁰ Surface Location

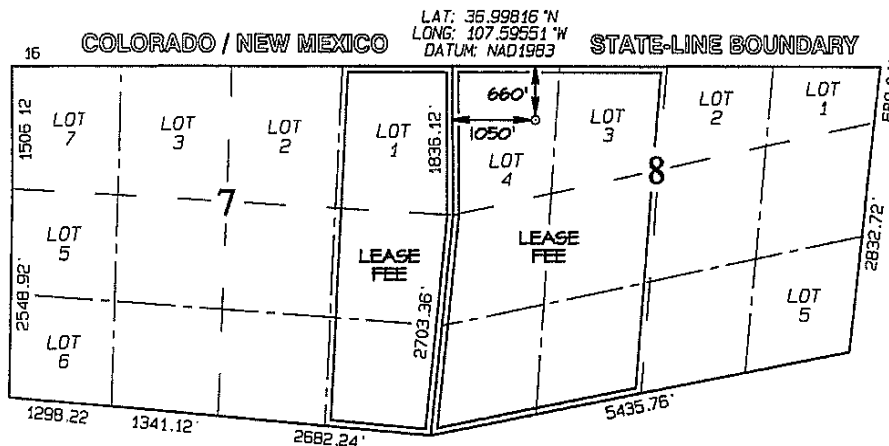
UL or lot no	Section	Township	Range	Lot Idn	Feet from the	North/South line	Feet from the	East/West line	County
E	8	32N	7W		660	NORTH	1050	WEST	SAN JUAN

¹¹ Bottom Hole Location If Different From Surface

UL or lot no.	Section	Township	Range	Lot Idn	Feet from the	North/South line	Feet from the	East/West line	County

¹² Dedicated Acres 298.38 Acres E/2 E/2 SEC 7 & W/2 SEC 8					¹³ Joint or Infill	¹⁴ Consolidation Code	¹⁵ Order No. R-1066
--	--	--	--	--	-------------------------------	----------------------------------	-----------------------------------

NO ALLOWABLE WILL BE ASSIGNED TO THIS COMPLETION UNTIL ALL INTERESTS HAVE BEEN CONSOLIDATED
OR A NON-STANDARD UNIT HAS BEEN APPROVED BY THE DIVISION



¹⁷ OPERATOR CERTIFICATION

I hereby certify that the information contained herein is true and complete to the best of my knowledge and belief

Virgil E. Chavez
Signature

Virgil E. Chavez
Printed Name

Construction Supervisor
Title

May 31, 2006
Date

¹⁸ SURVEYOR CERTIFICATION

I hereby certify that the well location shown on this plat was plotted from field notes of actual surveys made by me or under my supervision, and that the same is true and correct to the best of my belief

Date of Survey: MARCH 11, 2005

Signature and Seal of Professional Surveyor



JASON C. EDWARDS
Certificate Number 15269

District I
PO Box 1980, Hobbs, NM 88241-1980

District II
PO Drawer DD, Artesia, NM 88211-0719

District III
1000 Rio Brazos Rd., Aztec, NM 87410

District IV
PO Box 2088, Santa Fe, NM 87504-2088

State of New Mexico
Energy, Minerals & Natural Resources Department

OIL CONSERVATION DIVISION
PO Box 2088
Santa Fe, NM 87504-2088

Form C-102
Revised February 21, 1994
Instructions on back
Submit to Appropriate District Office
State Lease - 4 Copies
Fee Lease - 3 Copies

☐ AMENDED REPORT

WELL LOCATION AND ACREAGE DEDICATION PLAT

*API Number		*Pool Code	*Pool Name
		72319 / 71599	BLANCO MESAVERDE / BASIN DAKOTA
*Property Code	*Property Name		*Well Number
31329	SAN JUAN 32-7 UNIT		36F
*GRID No	*Operator Name		*Elevation
217817	CONOCOPHILLIPS COMPANY		6223'

¹⁰ Surface Location

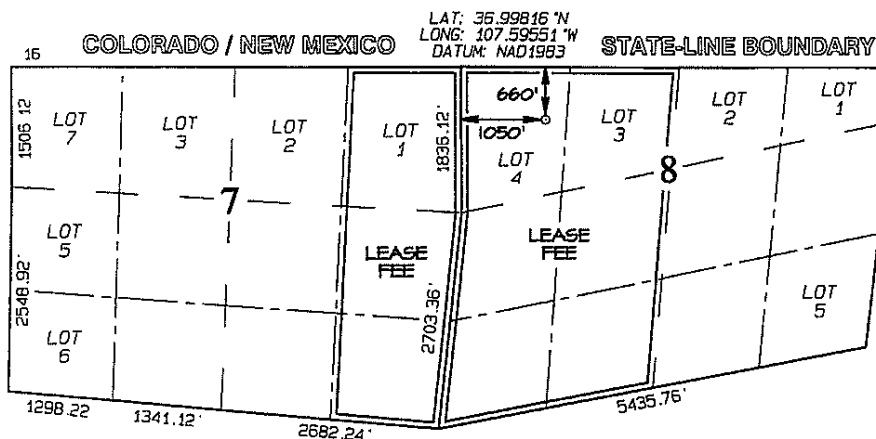
UL or lot no	Section	Township	Range	Lot Idn	Feet from the	North/South line	Feet from the	East/West line	County
E	8	32N	7W		660	NORTH	1050	WEST	SAN JUAN

¹¹ Bottom Hole Location If Different From Surface

UL or lot no.	Section	Township	Range	Lot Idn	Feet from the	North/South line	Feet from the	East/West line	County

¹² Dedicated Acres	¹³ Joint or Infill	¹⁴ Consolidation Code	¹⁵ Order No.
298.38 Acres E/2 E/2 SEC 7 & W/2 SEC 8			R-1066

NO ALLOWABLE WILL BE ASSIGNED TO THIS COMPLETION UNTIL ALL INTERESTS HAVE BEEN CONSOLIDATED OR A NON-STANDARD UNIT HAS BEEN APPROVED BY THE DIVISION



¹⁷ OPERATOR CERTIFICATION

I hereby certify that the information contained herein is true and complete to the best of my knowledge and belief

Virgil E. Chavez
Signature

Virgil E. Chavez
Printed Name

Construction Supervisor
Title

May 31, 2006
Date

¹⁸ SURVEYOR CERTIFICATION

I hereby certify that the well location shown on this plat was plotted from field notes of actual surveys made by me or under my supervision, and that the same is true and correct to the best of my belief

Date of Survey: MARCH 11, 2005

Signature and Seal of Professional Surveyor



JASON C. EDWARDS
Certificate Number 15269

Permit Comments

Operator: CONOCOPHILLIPS COMPANY , 217817

Well: SAN JUAN 32 7 UNIT #036F

API: 30-045-33899

Created By	Comment	Comment Date
SHAYDEN	R-1066 is only for the Blanco Mesaverde. Basin Dakota NSP is R-2046, 32N 7W Tract B.	8/21/2006
CPerrin	Correct cement volume	8/29/2006