

**State of New Mexico**  
**Energy, Minerals and Natural Resources**  
**Oil Conservation Division**  
**1220 S. St Francis Dr.**  
**Santa Fe, NM 87505**

**APPLICATION FOR PERMIT TO DRILL, RE-ENTER, DEEPEN, PLUGBACK, OR ADD A ZONE**

1. Operator Name and Address CONOCOPHILLIPS COMPANY 3401 E. 30TH STREET FARMINGTON , NM 87402		2. OGRID Number 217817
		3. API Number 30-045-33913
4. Property Code 31329	5. Property Name SAN JUAN 32 7 UNIT	6. Well No. 248A

**7. Surface Location**

UL - Lot	Section	Township	Range	Lot Idn	Feet From	N/S Line	Feet From	E/W Line	County
M	8	32N	07W	M	805	S	1150	W	SAN JUAN

**8. Pool Information**

BASIN FRUITLAND COAL (GAS)	71629
----------------------------	-------

**Additional Well Information**

9. Work Type New Well	10. Well Type GAS	11. Cable/Rotary	12. Lease Type Private	13. Ground Level Elevation 6276
14. Multiple N	15. Proposed Depth 3256	16. Formation Fruitland Coal	17. Contractor	18. Spud Date
Depth to Ground water 80		Distance from nearest fresh water well > 1000		Distance to nearest surface water > 1000

Pit: Liner: Synthetic ☒ 12 \_\_\_\_\_ miles thick Clay ☐ Pit Volume: 440 \_\_\_\_\_ bbls Drilling Method:  
 Closed Loop System ☐ Fresh Water ☐ Brine ☐ Diesel/Oil-based ☐ Gas/Air ☐

**19. Proposed Casing and Cement Program**

Type	Hole Size	Casing Type	Casing Weight/ft	Setting Depth	Sacks of Cement	Estimated TOC
Surf	12.25	9.625	32.3	235	143	0
Prod	7.875	5.5	17	3256	621	0

**Casing/Cement Program: Additional Comments**

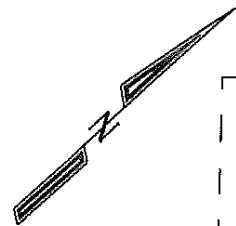
If drilled with H&P rig will use 13-1/2" surface hole & cement 9-5/8" cement with apprx. 225 sx Class G & circulate to surface. If surface casing pre-set drilled by Mote, will cement 12-1/4" hole; 9-5/8" casing with 43 sx Type I-II Portland cement w/20% flyash and circ. to surface.

**Proposed Blowout Prevention Program**

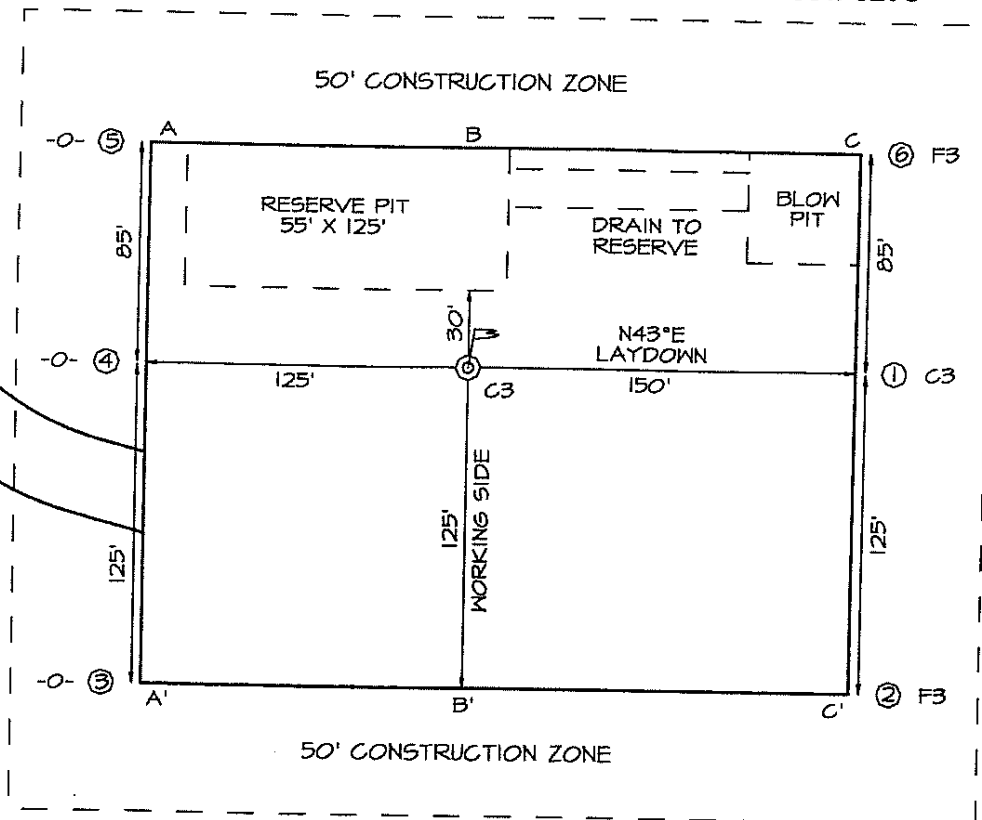
Type	Working Pressure	Test Pressure	Manufacturer
DoubleRam	2000	2000	Schafer

I hereby certify that the information given above is true and complete to the best of my knowledge and belief. I further certify that the drilling pit will be constructed according to NMOCD guidelines <input type="checkbox"/> a general permit <input checked="" type="checkbox"/> or an (attached) alternative OCD-approved plan <input type="checkbox"/> .	<b>OIL CONSERVATION DIVISION</b>	
Printed Name: Electronically filed by Juanita Farrell	Approved By: Charlie Perrin	
Title: Regulatory Analyst	Title: District Supervisor	
Email Address: juanita.r.farrell@conocophillips.com	Approved Date: 8/31/2006	Expiration Date: 8/31/2007
Date: 8/24/2006	Phone: 505-599-3419	

**CONOCOPHILLIPS COMPANY SAN JUAN 32-7 UNIT #248A**  
**805' FSL & 1150' FWL, SECTION 8, T32N, R7W, NMPM**  
**SAN JUAN COUNTY, NEW MEXICO ELEVATION: 6276'**



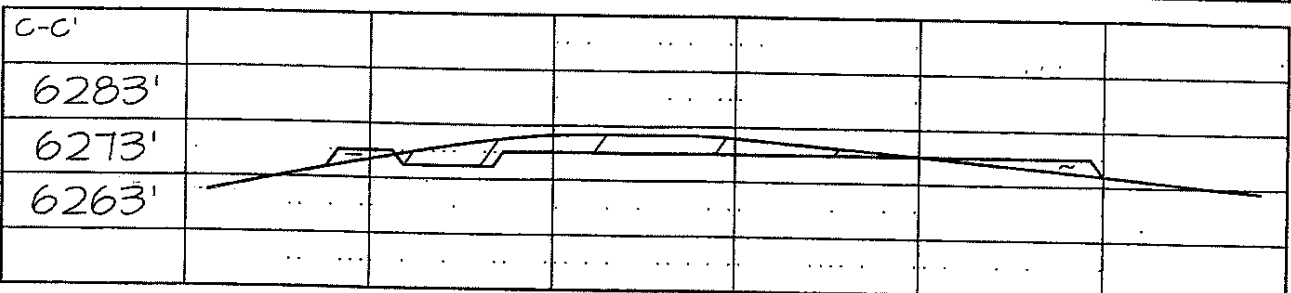
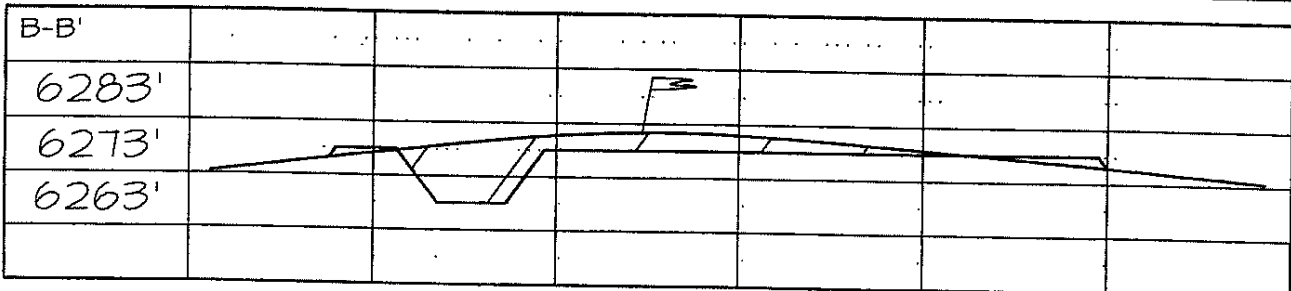
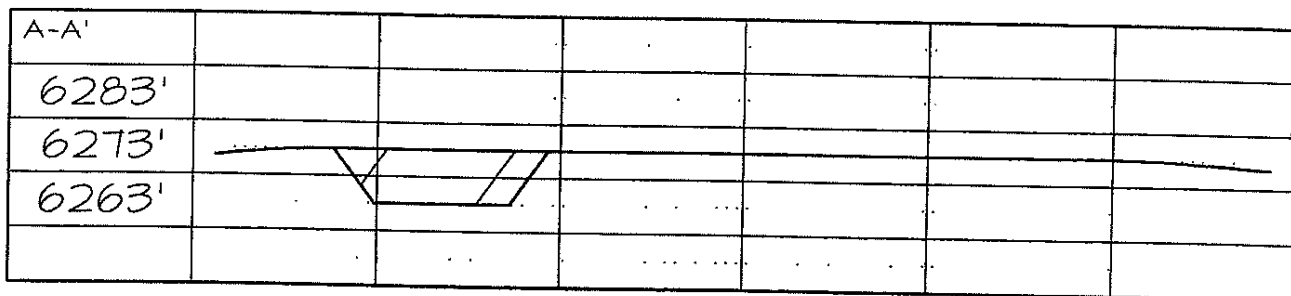
ACCESS  
650' (0-8%)



**LATITUDE: 36.99043° N**  
**LONGITUDE: 107.59514° W**  
 DATUM: NAD1927

PLAT NOTE:

\*SURFACE OWNER\*  
 FEE: Lester McCoy, Jr.



District I  
PO Box 1980, Hobbs, NM 88241-1980

District II  
PO Drawer DD, Artesia, NM 88211-0719

District III  
1000 Rio Brazos Rd., Aztec, NM 87410

District IV  
PO Box 2088, Santa Fe, NM 87504-2088

State of New Mexico  
Energy, Minerals & Natural Resources Department

OIL CONSERVATION DIVISION  
PO Box 2088  
Santa Fe, NM 87504-2088

Form C-102  
Revised February 21, 1994  
Instructions on back  
Submit to Appropriate District Office  
State Lease - 4 Copies  
Fee Lease - 3 Copies

☐ AMENDED REPORT

### WELL LOCATION AND ACREAGE DEDICATION PLAT

*API Number		*Pool Code 71629		*Pool Name BASIN FRUITLAND COAL	
*Property Code 31329		*Property Name SAN JUAN 32-7 UNIT			*Well Number 248A
*OGRID No 217817		*Operator Name CONOCOPHILLIPS COMPANY			*Elevation 6276'

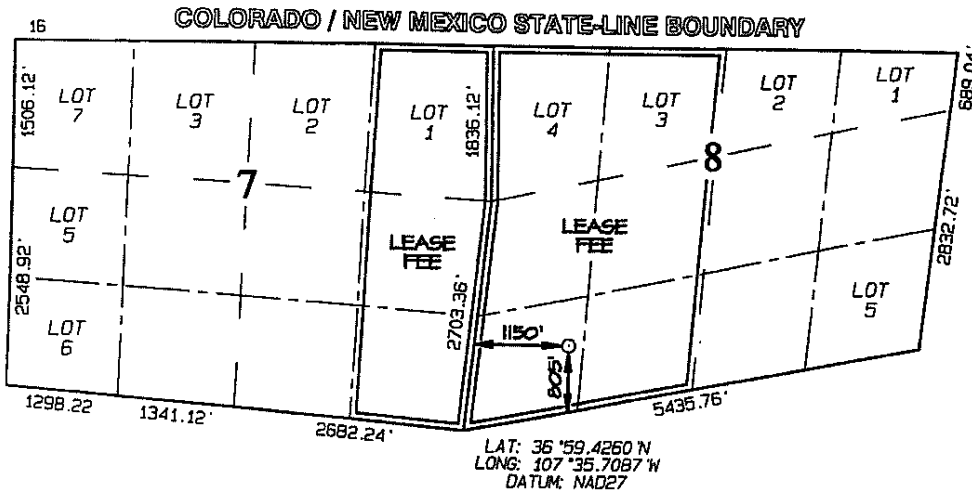
#### 10 Surface Location

UL or lot no.	Section	Township	Range	Lot Idn	Feet from the	North/South line	Feet from the	East/West line	County
M	8	32N	7W		805	SOUTH	1150	WEST	SAN JUAN

#### 11 Bottom Hole Location If Different From Surface

UL or lot no.	Section	Township	Range	Lot Idn	Feet from the	North/South line	Feet from the	East/West line	County
12 Dedicated Acres 298.38 Acres E/2 E/2 SEC 7 & W/2 SEC 8					13 Joint or Infill	14 Consolidation Code	15 Order No.		

NO ALLOWABLE WILL BE ASSIGNED TO THIS COMPLETION UNTIL ALL INTERESTS HAVE BEEN CONSOLIDATED  
OR A NON-STANDARD UNIT HAS BEEN APPROVED BY THE DIVISION



<b>17 OPERATOR CERTIFICATION</b> I hereby certify that the information contained herein is true and complete to the best of my knowledge and belief. <i>Virgil E. Chavez</i> Signature Virgil E. Chavez Printed Name Construction Supervisor Title May 18, 2006 Date	
<b>18 SURVEYOR CERTIFICATION</b> I hereby certify that the well location shown on this plat was plotted from field notes of actual surveys made by me or under my supervision, and that the same is true and correct to the best of my belief. Date of Survey: JULY 27, 2005 Signature and Seal of Professional Surveyor  JASON C. EDWARDS Certificate Number 15269	

## Permit Comments

Operator: CONOCOPHILLIPS COMPANY , 217817

Well: SAN JUAN 32 7 UNIT #248A

API: 30-045-33913

Created By	Comment	Comment Date
SHAYDEN		8/29/2006
SHAYDEN	NSP 1886	8/29/2006