

State of New Mexico
Energy, Minerals and Natural Resources
Oil Conservation Division
1220 S. St Francis Dr.
Santa Fe, NM 87505

APPLICATION FOR PERMIT TO DRILL, RE-ENTER, DEEPEN, PLUGBACK, OR ADD A ZONE

1. Operator Name and Address CHEVRON U S A INC 11111 S. WILCREST HOUSTON , TX 77099		2. OGRID Number 4323
		3. API Number 30-025-38553
4. Property Code 30022	5. Property Name VACUUM GRAYBURG SAN ANDRES UNIT	6. Well No. 131

7. Surface Location

UL - Lot	Section	Township	Range	Lot Idn	Feet From	N/S Line	Feet From	E/W Line	County
G	2	18S	34E	G	2605	N	2085	E	LEA

8. Pool Information

VACUUM;GRAYBURG-SAN ANDRES	62180
VACUUM;GRAYBURG-SAN ANDRES	62180

Additional Well Information

9. Work Type New Well	10. Well Type OIL	11. Cable/Rotary	12. Lease Type State	13. Ground Level Elevation 4011
14. Multiple Y	15. Proposed Depth	16. Formation San Andres	17. Contractor	18. Spud Date
Depth to Ground water 120		Distance from nearest fresh water well		Distance to nearest surface water
Pit: Liner: Synthetic <input type="checkbox"/> miles thick Clay <input type="checkbox"/> Pit Volume: bbls Drilling Method: Closed Loop System <input checked="" type="checkbox"/> Fresh Water <input type="checkbox"/> Brine <input type="checkbox"/> Diesel/Oil-based <input type="checkbox"/> Gas/Air <input type="checkbox"/>				

19. Proposed Casing and Cement Program

Type	Hole Size	Casing Type	Casing Weight/ft	Setting Depth	Sacks of Cement	Estimated TOC
Surf	14.75	11.75	42	1500	1010	
Int1	11	8.625	24	2800	835	
Prod	7.875	5.5	15.5	5200	585	

Casing/Cement Program: Additional Comments

SURF:755SX,13.5PPG,1.74FT3/SX,9.09GAL/SX,CLC,4%BENTONITE,0.1PPS
 POLYFLAKE...255SX,14.8PPG,1.34FT3/SX,6.29GAL/SX,CLC INTL...550SX,
 14.8PPG,1.36FT3/SX,6.43GAL/SX,CLC...LEAD185SX,13.5PPG,1.73FT3/SX,
 9.08GAL/SX,CLC,TAIL...100SX,14.8PPG,1.33FT3/SX,6.3GAL/SX,CLCPROD,
 350SX,12.4PPG,2.15FT3/SX,11.98GAL/SX,35.65POZ,CLCH,TAIL...235SX, 14.2PPG,1.35FT3/SX,6.33GAL/SX,50.50POZCLH.

Proposed Blowout Prevention Program

Type	Working Pressure	Test Pressure	Manufacturer
Annular	3000	2500	
Blind	3000	2500	
Pipe	3000	2500	

I hereby certify that the information given above is true and complete to the best of my knowledge and belief. I further certify that the drilling pit will be constructed according to NMOCD guidelines <input type="checkbox"/> , a general permit <input type="checkbox"/> , or an (attached) alternative OCD-approved plan <input type="checkbox"/> .	OIL CONSERVATION DIVISION	
Printed Name: Electronically filed by Denise Pinkerton	Approved By: Paul Kautz	
Title: Regulatory Specialist	Title: Geologist	
Email Address: leakejd@chevron.com	Approved Date: 9/19/2007	Expiration Date: 9/19/2008
Date: 9/18/2007	Phone: 432-687-7375	Conditions of Approval Attached

Nabors Rig No. 398
Drilling Location Plat
For Closed Loop System
(Revision 1)



- Notes:**
1. Flare pit should always be in North or Eastern corner of location, to take advantage of prevailing winds in the event of an H₂S occurrence.
 2. 20' wide roadway should be included to allow access to skip loader tracks from either end.

District I
 1625 N. French Dr., Hobbs, NM 88240
 Phone:(505) 393-6161 Fax:(505) 393-0720

District II
 1301 W. Grand Ave., Artesia, NM 88210
 Phone:(505) 748-1283 Fax:(505) 748-9720

District III
 1000 Rio Brazos Rd., Aztec, NM 87410
 Phone:(505) 334-6178 Fax:(505) 334-6170

District IV
 1220 S. St Francis Dr., Santa Fe, NM 87505
 Phone:(505) 476-3470 Fax:(505) 476-3462

State of New Mexico
Energy, Minerals and Natural Resources
Oil Conservation Division
1220 S. St Francis Dr.
Santa Fe, NM 87505

Form C-102
 Permit 61104

WELL LOCATION AND ACREAGE DEDICATION PLAT

1. API Number 30-025-38553	2. Pool Code 62180	3. Pool Name VACUUM,GRAYBURG-SAN ANDRES
4. Property Code 30022	5. Property Name VACUUM GRAYBURG SAN ANDRES UNIT	6. Well No. 131
7. OGRID No. 4323	8. Operator Name CHEVRON U S A INC	9. Elevation 4011

10. Surface Location

UL - Lot	Section	Township	Range	Lot Idn	Feet From	N/S Line	Feet From	E/W Line	County
G	2	18S	34E		2605	N	2085	E	LEA

11. Bottom Hole Location If Different From Surface

11. Bottom Hole Location If Different From Surface									
UL - Lot	Section	Township	Range	Lot Idn	Feet From	N/S Line	Feet From	E/W Line	County
12. Dedicated Acres 40.00		13. Joint or Infill		14. Consolidation Code			15. Order No.		

NO ALLOWABLE WILL BE ASSIGNED TO THIS COMPLETION UNTIL ALL INTERESTS HAVE BEEN CONSOLIDATED OR A NON-STANDARD UNIT HAS BEEN APPROVED BY THE DIVISION

	OPERATOR CERTIFICATION	
	<i>I hereby certify that the information contained herein is true and complete to the best of my knowledge and belief, and that this organization either owns a working interest or unleased mineral interest in the land including the proposed bottom hole location(s) or has a right to drill this well at this location pursuant to a contract with an owner of such a mineral or working interest, or to a voluntary pooling agreement or a compulsory pooling order heretofore entered by the division.</i>	
	E-Signed By: Denise Pinkerton Title: Regulatory Specialist Date: 9/18/2007	
	SURVEYOR CERTIFICATION	
	<i>I hereby certify that the well location shown on this plat was plotted from field notes of actual surveys made by me or under my supervision, and that the same is true and correct to the best of my belief.</i>	
	Surveyed By: JOHN PIPER Date of Survey: 8/9/2007 Certificate Number: 7254	

DISTRICT 1
1625 N. French Dr., Hobbs, NM 88240

DISTRICT II
1301 W. Grand Ave., Artesia, NM 88210

DISTRICT III
1000 Rio Brazos Rd., Aztec, NM 87410

DISTRICT IV
1220 St. Francis Dr., Santa Fe, NM 87505

State of New Mexico
Energy, Minerals and Natural Resources Department

Form C-102
Revised October 12, 2005

Submit to Appropriate District Office
State Lease-4 copies
Fee Lease-3 copies

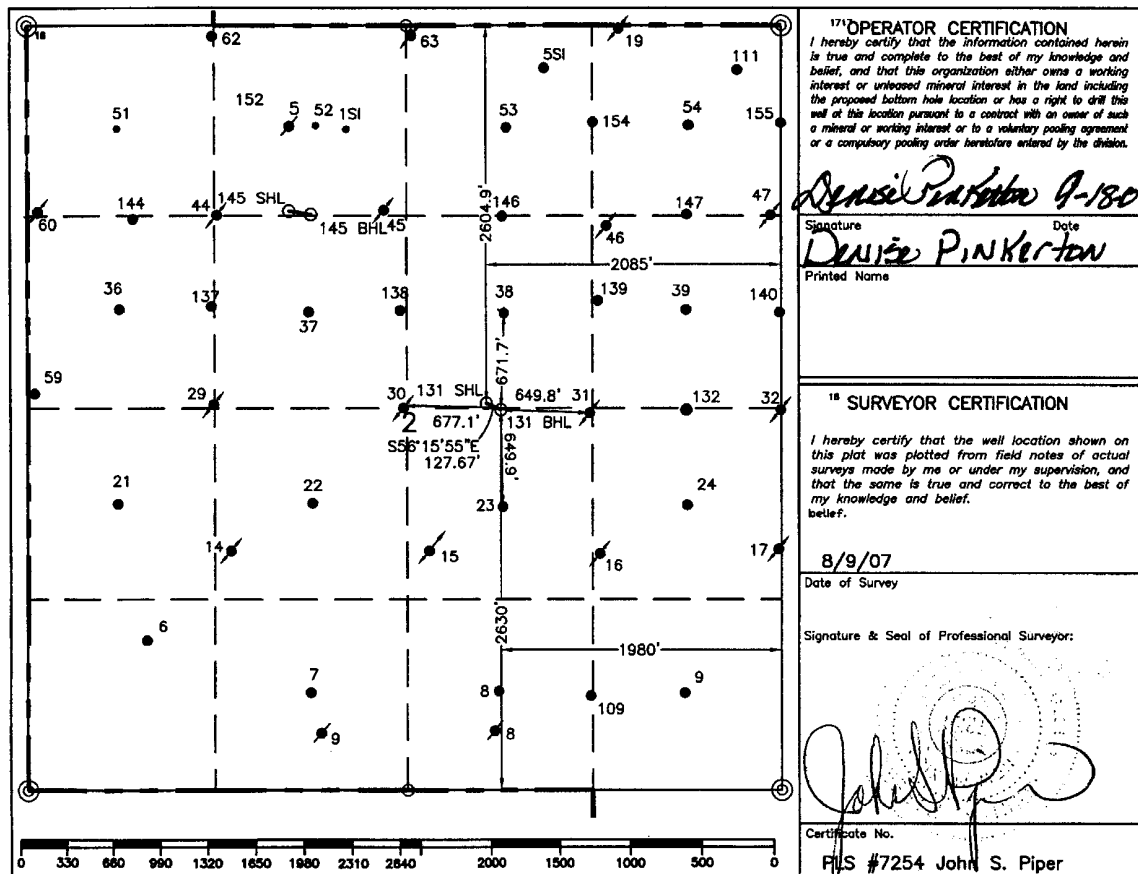
OIL CONSERVATION DIVISION
1220 South St. Francis Drive
Santa Fe, NM 87505

☐ AMENDED REPORT

WELL LOCATION AND ACREAGE DEDICATION PLAT

¹ API Number		² Pool Code 62180		³ Pool Name Vacuum Grayburg San Andres					
⁴ Property Code		⁵ Property Name VACUUM GRAYBURG SAN ANDRES UNIT		⁶ Well Number 131					
⁷ OGRID No. 4323		⁸ Operator Name CHEVRON USA, INC.		⁹ Elevation 4011'					
¹⁰ Surface Location									
UL or lot no. G	Section 2	Township 18-S	Range 34-E	Lot Idn	Feet from the 2604.9'	North/South line North	Feet from the 2085'	East/West line East	² County Lea
¹¹ Bottom Hole Location If Different From Surface									
UL or lot no. J	Section 2	Township 18-S	Range 34-E	Lot Idn	Feet from the 2630'	North/South line South	Feet from the 1980'	East/West line East	² County Lea
¹² Dedicated Acres 40		¹³ Joint or Infill		¹⁴ Consolidation Code		¹⁵ Order No.			

NO ALLOWABLE WILL BE ASSIGNED TO THIS COMPLETION UNTIL ALL INTERESTS HAVE BEEN CONSOLIDATED
OR A NON-STANDARD UNIT HAS BEEN APPROVED BY THE DIVISION.



○ = Staked Location • = Producing Well ● = Injection Well ◇ = Water Supply Well ◆ = Plugged & Abandon Well
⊙ = Found Section Corner, 2 or 3" Iron Pipe & GLO B.C. ○ = Found /4 Section Corner, 1" Iron Pipe & GLO B.C.

ADDITIONAL INFORMATION ON THE LOCATION

State Plane Coordinates		SHL= 788452.43 1927 NAD= 747273.42	
Northing		BHL= 788558.60 1927 NAD= 747379.59	
SHL= 647349.15 1927 NAD= 647284.25		SHL= 103°31'45.532"	
BHL= 647278.25 1927 NAD= 647213.35		Longitude BHL= 103°31'44.294"	
Latitude BHL= 32°46'36.547"		Combined Grid Factor	
Zone North American Datum		Coordinate File	
East 1983		0.999978314	
Drawing File		Buckeye.crd	
VGSAU145.Dwg		Field Book	
		Lea #24, Pg. 14	

Permit Conditions of Approval

Operator: CHEVRON U S A INC , 4323

Well: VACUUM GRAYBURG SAN ANDRES UNIT #131

API: 30-025-38553

OCD Reviewer	Condition
pkautz	Pit construction and closure must satisfy all requirements of your approved plan, O.C.D. Rule 19.15.2.50, and the Pit and Below-Grade Tank Guidelines