

State of New Mexico
Energy, Minerals and Natural Resources
Oil Conservation Division
1220 S. St Francis Dr.
Santa Fe, NM 87505

APPLICATION FOR PERMIT TO DRILL, RE-ENTER, DEEPEN, PLUGBACK, OR ADD A ZONE

1. Operator Name and Address CHEVRON U S A INC 11111 S. WILCREST HOUSTON , TX 77099		2. OGRID Number 4323
		3. API Number 30-025-38555
4. Property Code 30022	5. Property Name VACUUM GRAYBURG SAN ANDRES UNIT	6. Well No. 145

7. Surface Location

UL - Lot	Section	Township	Range	Lot Idn	Feet From	N/S Line	Feet From	E/W Line	County
C	2	18S	34E	3	1286	N	1831	W	LEA

8. Pool Information

VACUUM;GRAYBURG-SAN ANDRES	62180
VACUUM;GRAYBURG-SAN ANDRES	62180

Additional Well Information

9. Work Type New Well	10. Well Type OIL	11. Cable/Rotary	12. Lease Type State	13. Ground Level Elevation 4019
14. Multiple Y	15. Proposed Depth	16. Formation San Andres	17. Contractor	18. Spud Date
Depth to Ground water 120		Distance from nearest fresh water well		Distance to nearest surface water
Pit: Liner: Synthetic <input type="checkbox"/> miles thick Clay <input type="checkbox"/> Pit Volume: bbls Drilling Method: Closed Loop System <input checked="" type="checkbox"/> Fresh Water <input type="checkbox"/> Brine <input type="checkbox"/> Diesel/Oil-based <input type="checkbox"/> Gas/Air <input type="checkbox"/>				

19. Proposed Casing and Cement Program

Type	Hole Size	Casing Type	Casing Weight/ft	Setting Depth	Sacks of Cement	Estimated TOC
Surf	14.75	11.75	42	1500	1010	
Int1	11	8.625	24	2800	835	
Prod	7.875	5.5	15.5	5200	585	

Casing/Cement Program: Additional Comments

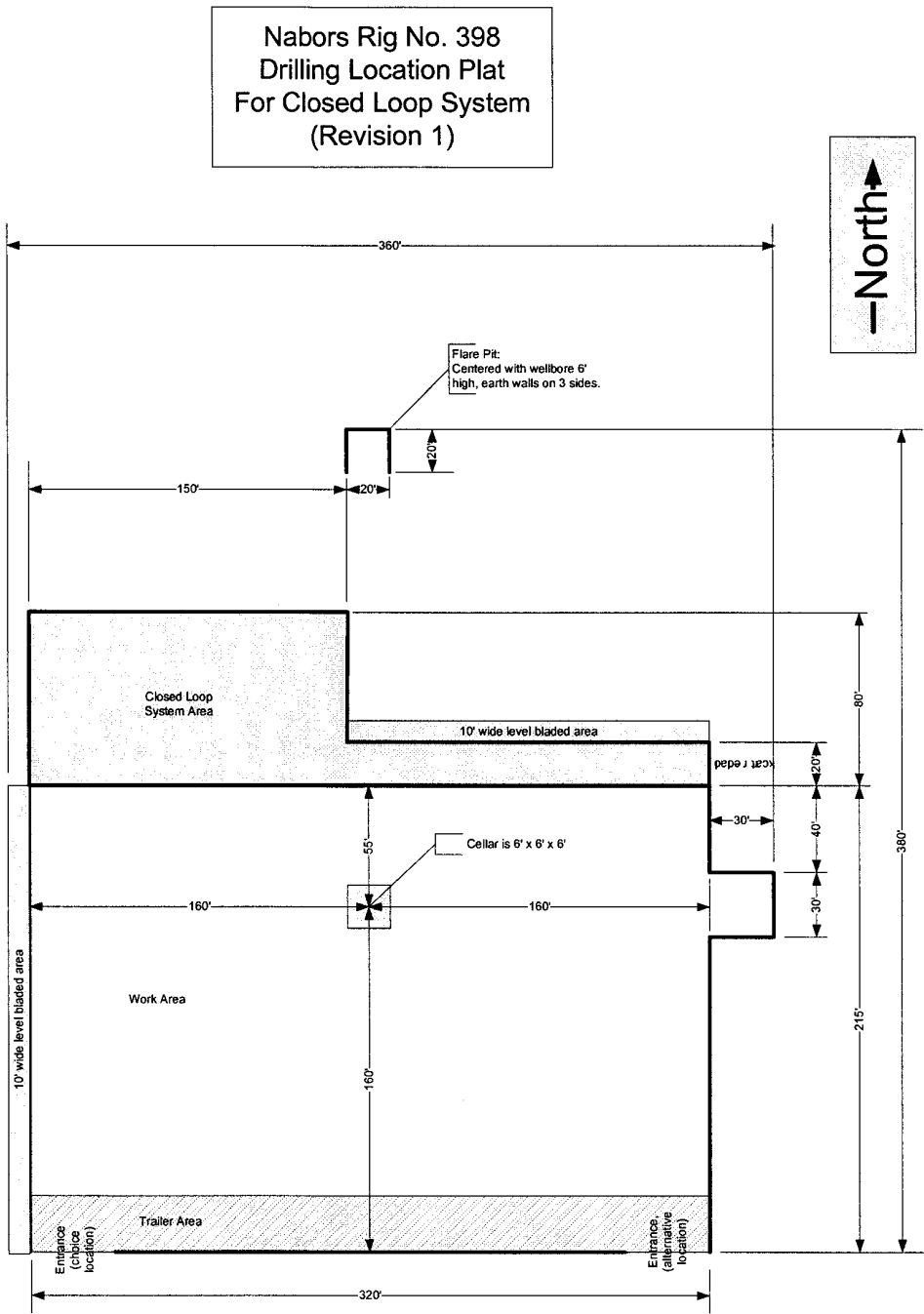
SURF:755SX,13.5PPG,1.74FT3/SX,9.09GAL/SX,CLC,4%BENTONITE,0.1PPS
 POLYFLAKE...255SX,14.8PPG,1.34FT3/SX,6.29GAL/SX,CLC INTL...550 SX
 14.8PPG,1.36FT3/SX,6.43GAL/SX,CLC...LEAD185SX,13.5PPG,1.73FT3/SX,
 9.08GAL/SX,CLC,TAIL...100SX,14.8PPG,1.33FT3/SX,6.3GAL/SX,CLC PROD,
 350SX,12.4PPG,2.15FT3/SX,11.98GAL/SX,35.65POZ,CLH,TAIL...235SX, 14.2PPG,1.35FT3/SX,6.33GAL/SX,50.50POZ CLH

Proposed Blowout Prevention Program

Type	Working Pressure	Test Pressure	Manufacturer
Annular	3000	2500	
Blind	3000	2500	
Pipe	3000	2500	

I hereby certify that the information given above is true and complete to the best of my knowledge and belief. I further certify that the drilling pit will be constructed according to NMOCD guidelines <input type="checkbox"/> , a general permit <input type="checkbox"/> , or an (attached) alternative OCD-approved plan <input type="checkbox"/> .	OIL CONSERVATION DIVISION	
Printed Name: Electronically filed by Denise Pinkerton	Approved By: Paul Kautz	
Title: Regulatory Specialist	Title: Geologist	
Email Address: leakejd@chevron.com	Approved Date: 9/19/2007	Expiration Date: 9/19/2008
Date: 9/18/2007	Phone: 432-687-7375	Conditions of Approval Attached

Pit information and Design (Closed Loop System)



Notes:

1. Flare pit should always be in North or Eastern corner of location, to take advantage of prevailing winds in the event of an H2S occurrence.
2. 20' wide roadway should be included to allow access to skip loader tracks from either end.

District II

1301 W. Grand Ave., Artesia, NM 88210
Phone:(505) 748-1283 Fax:(505) 748-9720

District III

1000 Rio Brazos Rd., Aztec, NM 87410
Phone:(505) 334-6178 Fax:(505) 334-6170

District IV

1220 S. St Francis Dr., Santa Fe, NM 87505
Phone:(505) 476-3470 Fax:(505) 476-3462

State of New Mexico
Energy, Minerals and Natural Resources

Oil Conservation Division

1220 S. St Francis Dr.

Santa Fe, NM 87505

WELL LOCATION AND ACREAGE DEDICATION PLAT

1. API Number 30-025-38555	2. Pool Code 62180	3. Pool Name VACUUM,GRAYBURG-SAN ANDRES
4. Property Code 30022	5. Property Name VACUUM GRAYBURG SAN ANDRES UNIT	6. Well No. 145
7. OGRID No. 4323	8. Operator Name CHEVRON U S A INC	9. Elevation 4019

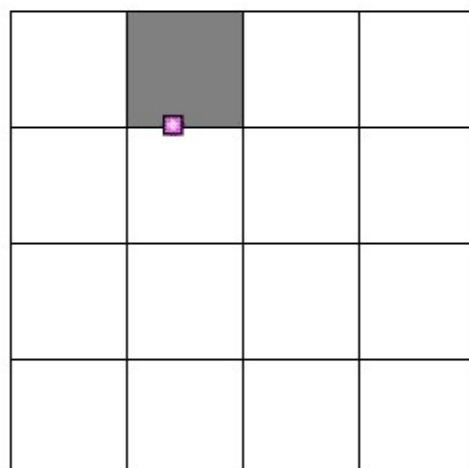
10. Surface Location

UL - Lot C	Section 2	Township 18S	Range 34E	Lot Idn	Feet From 1286	N/S Line N	Feet From 1831	E/W Line W	County LEA
---------------	--------------	-----------------	--------------	---------	-------------------	---------------	-------------------	---------------	---------------

11. Bottom Hole Location If Different From Surface

UL - Lot	Section	Township	Range	Lot Idn	Feet From	N/S Line	Feet From	E/W Line	County
12. Dedicated Acres 40.75	13. Joint or Infill	14. Consolidation Code	15. Order No.						

NO ALLOWABLE WILL BE ASSIGNED TO THIS COMPLETION UNTIL ALL INTERESTS HAVE BEEN CONSOLIDATED OR A NON-STANDARD UNIT HAS BEEN APPROVED BY THE DIVISION



OPERATOR CERTIFICATION

I hereby certify that the information contained herein is true and complete to the best of my knowledge and belief, and that this organization either owns a working interest or unleased mineral interest in the land including the proposed bottom hole location(s) or has a right to drill this well at this location pursuant to a contract with an owner of such a mineral or working interest, or to a voluntary pooling agreement or a compulsory pooling order heretofore entered by the division.

E-Signed By: Denise Pinkerton

Title: Regulatory Specialist

Date: 9/18/2007

SURVEYOR CERTIFICATION

I hereby certify that the well location shown on this plat was plotted from field notes of actual surveys made by me or under my supervision, and that the same is true and correct to the best of my belief.

Surveyed By: JOHN PIPER

Date of Survey: 8/9/2007

Certificate Number: 7254

DISTRICT I
1625 N. French Dr., Hobbs, NM 88240

DISTRICT II
1301 W. Grand Ave., Artesia, NM 88210

DISTRICT III
1000 Rio Brazos Rd., Aztec, NM 87410

DISTRICT IV
1220 St. Francis Dr., Santa Fe, NM 87505

State of New Mexico
Energy, Minerals and Natural Resources Department

OIL CONSERVATION DIVISION
1220 South St. Francis Drive
Santa Fe, NM 87505

Form C-1021
Revised October 12, 2005

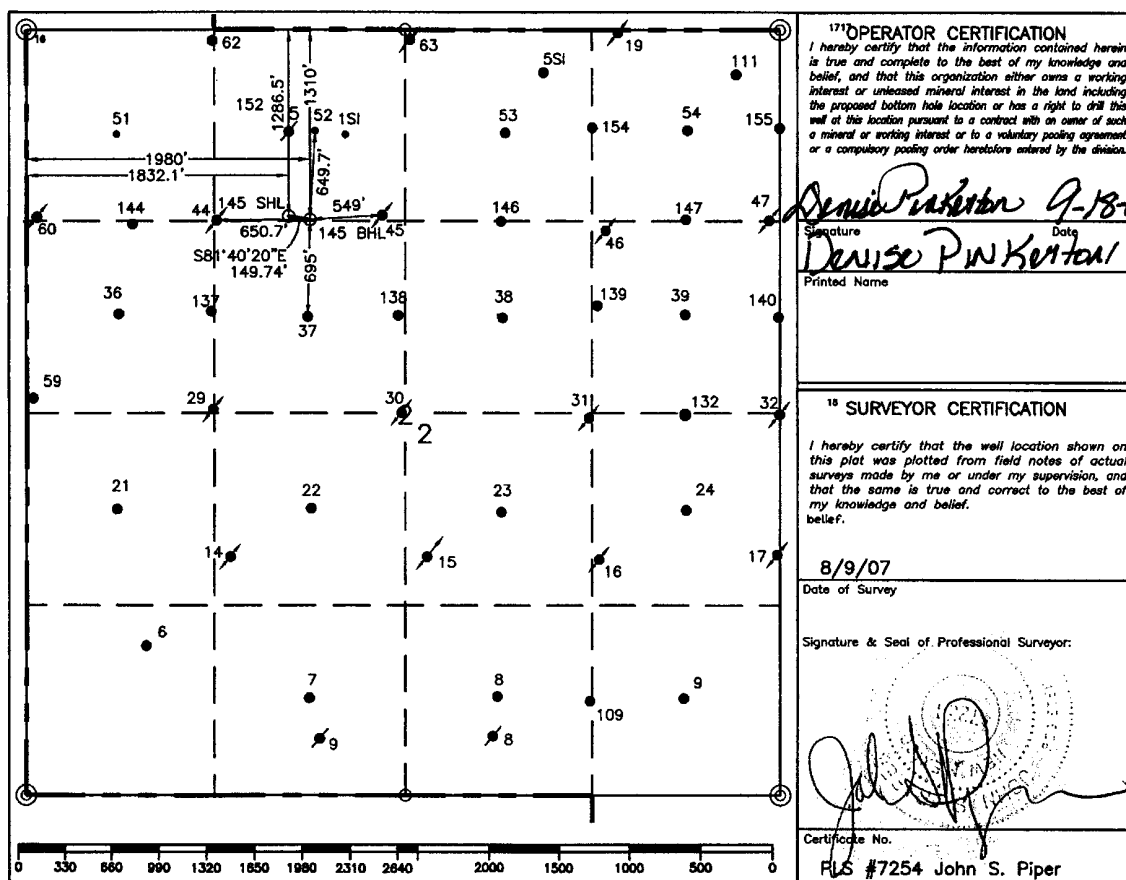
Submit to Appropriate District Office
State Lease-4 copies
Fee Lease-3 copies

☐ AMENDED REPORT

WELL LOCATION AND ACREAGE DEDICATION PLAT

1 API Number		2 Pool Code 62180		3 Pool Name Vacuum Grayburg San Andres	
4 Property Code		5 Property Name VACUUM GRAYBURG SAN ANDRES UNIT		6 Well Number 145	
7 OGRID No. 4323		8 Operator Name CHEVRON USA, INC.		9 Elevation 4019'	
10 Surface Location					
UL or lot no. C	Section 2	Township 18-S	Range 34-E	Lot Idn	Feet from the 1286.5'
				North/South line North	Feet from the 1831.1'
				East/West line West	County Lea
11 Bottom Hole Location If Different From Surface					
UL or lot no. C	Section 2	Township 18-S	Range 34-E	Lot Idn	Feet from the 1310'
				North/South line North	Feet from the 1980'
				East/West line West	County Lea
12 Dedicated Acres 40		13 Joint or Infill		14 Consolidation Code	
				15 Order No.	

NO ALLOWABLE WILL BE ASSIGNED TO THIS COMPLETION UNTIL ALL INTERESTS HAVE BEEN CONSOLIDATED
OR A NON-STANDARD UNIT HAS BEEN APPROVED BY THE DIVISION.



○ = Staked Location • = Producing Well ● = Injection Well ◇ = Water Supply Well ◆ = Plugged & Abandon Well
⊙ = Found Section Corner, 2 or 3" Iron Pipe & GLO B.C. ○ = Found 1/4 Section Corner, 1" Iron Pipe & GLO B.C.

ADDITIONAL INFORMATION ON THE LOCATION

State Plane Coordinates SHL= 648650.63 1927 NAD= 648585.72 Northing BHL= 648628.94 1927 NAD= 648564.03		SHL= 787066.28 1927 NAD= 745887.31 Easting BHL= 787214.44 1927 NAD= 746035.47	
SHL= 32°46'50.237" Latitude BHL= 32°46'50.012"		SHL= 103°32'01.651" Longitude BHL= 103°31'59.916"	
Zone North American Datum		Combined Grid Factor	
East 1983		0.999978314	
Drawing File VGSAU145.Dwg		Coordinate File Buckeye.crd	
		Field Book Lea #24, Pg. 13	

Permit Conditions of Approval

Operator: CHEVRON U S A INC , 4323

Well: VACUUM GRAYBURG SAN ANDRES UNIT #145

API: 30-025-38555

OCD Reviewer	Condition
pkautz	Pit construction and closure must satisfy all requirements of your approved plan, O.C.D. Rule 19.15.2.50, and the Pit and Below-Grade Tank Guidelines