

State of New Mexico
Energy, Minerals and Natural Resources
Oil Conservation Division
1220 S. St Francis Dr.
Santa Fe, NM 87505

APPLICATION FOR PERMIT TO DRILL, RE-ENTER, DEEPEN, PLUGBACK, OR ADD A ZONE

1. Operator Name and Address PLANTATION OPERATING LLC 4700 W. SAM HOUSTON PKWY N. HOUSTON , TX 77041		2. OGRID Number 237788
		3. API Number 30-015-36187
4. Property Code 35519	5. Property Name CYPRESS	6. Well No. 002

7. Surface Location

UL - Lot	Section	Township	Range	Lot Idn	Feet From	N/S Line	Feet From	E/W Line	County
G	8	23S	27E	G	1800	N	1700	E	EDDY

8. Pool Information

DELAWARE RIVER,BONE SPRING	16800
----------------------------	-------

Additional Well Information

9. Work Type New Well	10. Well Type OIL	11. Cable/Rotary	12. Lease Type Private	13. Ground Level Elevation 3170
14. Multiple N	15. Proposed Depth	16. Formation Delaware	17. Contractor	18. Spud Date 5/1/2008
Depth to Ground water 75		Distance from nearest fresh water well		Distance to nearest surface water
Pit: Liner: Synthetic <input type="checkbox"/> mils thick Clay <input type="checkbox"/> Pit Volume: bbls Drilling Method: Closed Loop System <input checked="" type="checkbox"/> Fresh Water <input type="checkbox"/> Brine <input type="checkbox"/> Diesel/Oil-based <input type="checkbox"/> Gas/Air <input type="checkbox"/>				

19. Proposed Casing and Cement Program

Type	Hole Size	Casing Type	Casing Weight/ft	Setting Depth	Sacks of Cement	Estimated TOC
Surf	12.25	9.625	36	350	350	0
Prod	8.75	5.5	17	5600	1000	0

Casing/Cement Program: Additional Comments

Drill 12 1/4" surface hole to 350'. Drlg mud will be FW spud mud from 0-350', 8.6#/gal. Casing: 9 5/8" 36# J55 ST&C Csg set at 350'. Cmt w/ 350 sx Class "C" + 2% CaCl2--Circulate to surface Drill 8 3/4" hole to TD--5600'. Drlg Mud w/ be brine from 350'--5600' Wt--10.0#/gal. Casing: 5 1/2" 17# J55 LT&C Csg set at 5600'. Cmt w/ (Lead) 600 sx BJ Lite Yld--2.03, Wt--12.5#, (Tail)400 sx Super "C" Modified, Yld--1.43, Wt--13.6# Circulate cement to the surface.

Proposed Blowout Prevention Program

Type	Working Pressure	Test Pressure	Manufacturer
DoubleRam	3000	3000	Shaffer
Annular	3000	3000	Hydril
Pipe	3000	3000	Shaffer

I hereby certify that the information given above is true and complete to the best of my knowledge and belief. I further certify that the drilling pit will be constructed according to NMOCD guidelines <input type="checkbox"/> , a general permit <input type="checkbox"/> , or an (attached) alternative OCD-approved plan <input type="checkbox"/> . Printed Name: Electronically filed by Kimberly K Faldyn Title: Engineering Tech Email Address: kfaldyn@plantationpetro.com Date: 3/11/2008 Phone: 281-598-7551	OIL CONSERVATION DIVISION	
	Approved By: Tim Gum	
	Title: District Supervisor	
	Approved Date: 3/14/2008	Expiration Date: 3/14/2010
	Conditions of Approval Attached	

DISTRICT I
1625 N. FRENCH DR., BOBBS, NM 88240

DISTRICT II
1301 W. GRAND AVENUE, ARTESIA, NM 88210

DISTRICT III
1000 Rio Brazos Rd., Aztec, NM 87410

DISTRICT IV
1220 S. ST. FRANCIS DR., SANTA FE, NM 87505

State of New Mexico
Energy, Minerals and Natural Resources Department

OIL CONSERVATION DIVISION
1220 SOUTH ST. FRANCIS DR.
Santa Fe, New Mexico 87505

Form C-102
Revised October 12, 2005
Submit to Appropriate District Office
State Lease - 4 Copies
Fee Lease - 3 Copies

WELL LOCATION AND ACREAGE DEDICATION PLAT

☐ AMENDED REPORT

API Number	Pool Code 16800	Pool Name Delaware River; Bone Spring
Property Code 35519	Property Name CYPRESS	Well Number 2
OGRID No. 237788	Operator Name PLANTATION OPERATING, LLC	Elevation 3170'

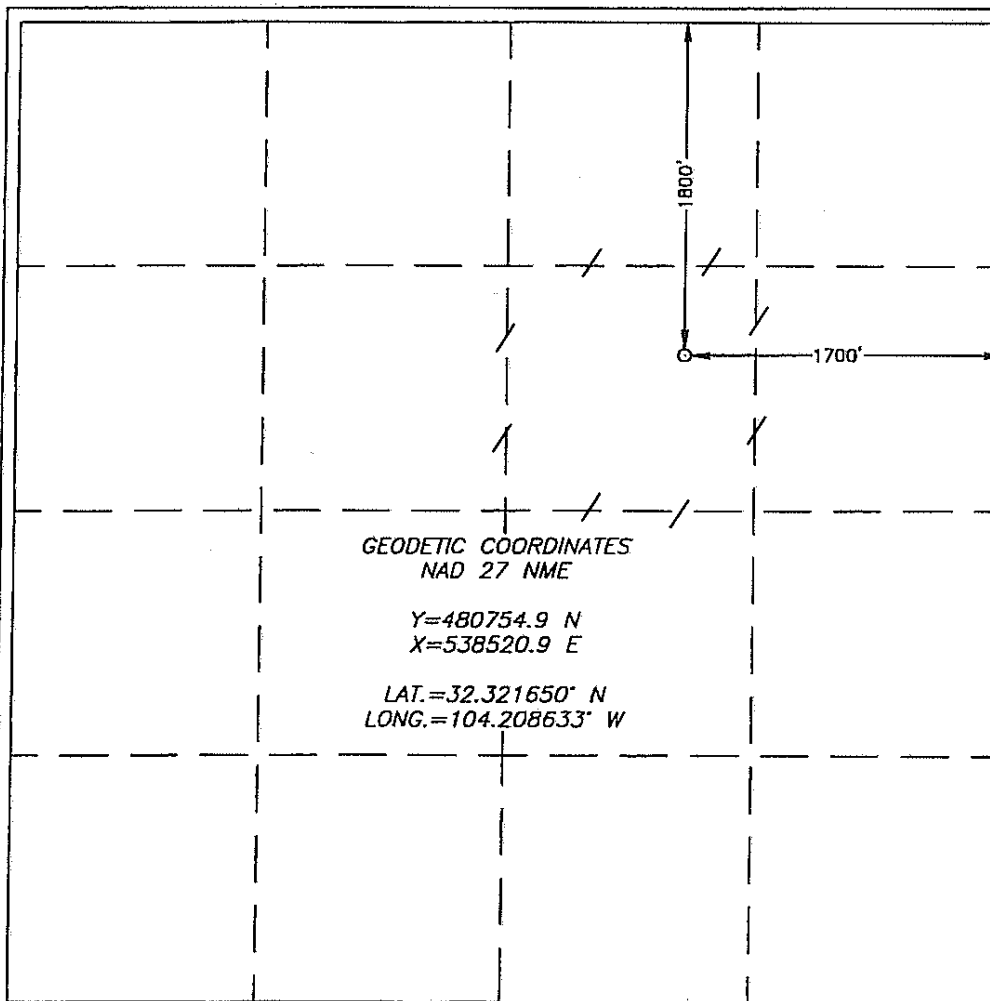
Surface Location

UL or lot No. G	Section 8	Township 23-S	Range 27-E	Lot Idn	Feet from the 1800	North/South line NORTH	Feet from the 1700	East/West line EAST	County EDDY
--------------------	--------------	------------------	---------------	---------	-----------------------	---------------------------	-----------------------	------------------------	----------------

Bottom Hole Location If Different From Surface

UL or lot No.	Section	Township	Range	Lot Idn	Feet from the	North/South line	Feet from the	East/West line	County
Dedicated Acres 40	Joint or Infill	Consolidation Code	Order No.						

NO ALLOWABLE WILL BE ASSIGNED TO THIS COMPLETION UNTIL ALL INTERESTS HAVE BEEN CONSOLIDATED
OR A NON-STANDARD UNIT HAS BEEN APPROVED BY THE DIVISION



OPERATOR CERTIFICATION

I hereby certify that the information herein is true and complete to the best of my knowledge and belief, and that this organization either owns a working interest or unleased mineral interest in the land including the proposed bottom hole location or has a right to drill this well at this location pursuant to a contract with an owner of such mineral or working interest, or to a voluntary pooling agreement or a compulsory pooling order heretofore entered by the division.

Signature: *Kimberly Faldyn* Date: 3/10/2008
Printed Name: Kimberly Faldyn

SURVEYOR CERTIFICATION

I hereby certify that the well location shown on this plat was plotted from field notes of actual surveys made by me or under my supervision, and that the same is true and correct to the best of my belief.

Signature: *Gary G. Eidson* Date: 3/29/08
Professional Surveyor
08-11-0033

Certificate No. GARY EIDSON 12841
RONALD EIDSON 3238

Permit Comments

Operator: PLANTATION OPERATING LLC , 237788

Well: CYPRESS #002

API: 30-015-36187

Created By	Comment	Comment Date
kfaldyn	11" 3000# WP Double Ram Hyd BOP 11" 3000# WP Annular Rotating Head 3" 3000# WP Choke manifold Test BOP equipment & wellhead to 250 psi low & 3000 psi high.	2/19/2008

Permit Conditions of Approval

Operator: PLANTATION OPERATING LLC , 237788

Well: CYPRESS #002

API: 30-015-36187

OCD Reviewer	Condition
kmwilson	Pit construction and closure must satisfy all requirements of your approved plan, O.C.D. Rule 19.15.2.50, and the Pit and Below-Grade Tank Guidelines
kmwilson	Operator must use fresh mud when drilling the surface location.
kmwilson	Please notify OCD of spud and time to witness the cementing and all casing strings.