

State of New Mexico
Energy, Minerals and Natural Resources
Oil Conservation Division
1220 S. St Francis Dr.
Santa Fe, NM 87505

APPLICATION FOR PERMIT TO DRILL, RE-ENTER, DEEPEN, PLUGBACK, OR ADD A ZONE

1. Operator Name and Address CHEVRON U S A INC 11111 S. WILCREST HOUSTON , TX 77099		2. OGRID Number 4323
		3. API Number 30-025-38849
4. Property Code 29923	5. Property Name CENTRAL VACUUM UNIT	6. Well No. 238

7. Surface Location

UL - Lot	Section	Township	Range	Lot Idn	Feet From	N/S Line	Feet From	E/W Line	County
P	36	17S	34E	P	10	S	420	E	LEA

8. Pool Information

VACUUM;GRAYBURG-SAN ANDRES	62180
----------------------------	-------

Additional Well Information

9. Work Type New Well	10. Well Type OIL	11. Cable/Rotary	12. Lease Type State	13. Ground Level Elevation 3992
14. Multiple N	15. Proposed Depth	16. Formation San Andres	17. Contractor	18. Spud Date
Depth to Ground water 120		Distance from nearest fresh water well		Distance to nearest surface water
Pit: Liner: Synthetic <input type="checkbox"/> mls thick Clay <input type="checkbox"/> Pit Volume: bbls Drilling Method: Closed Loop System <input checked="" type="checkbox"/> Fresh Water <input type="checkbox"/> Brine <input type="checkbox"/> Diesel/Oil-based <input type="checkbox"/> Gas/Air <input type="checkbox"/>				

19. Proposed Casing and Cement Program

Type	Hole Size	Casing Type	Casing Weight/ft	Setting Depth	Sacks of Cement	Estimated TOC
Surf	14.75	11.75	42	450	385	
Int1	11	8.625	24	3200	1210	
Prod	7.785	5.5	15.5	5200	935	

Casing/Cement Program: Additional Comments

SURF:H-40,ST&C,SINGLE SYSTEM:385SX,14.8PPG,Y-1.34,CLC,0.1PPS POLY, 2%CACL INTER:K-55,ST&C,DV@1600,STG
 1:LEAD:445SX,13.5ppg,y-1.72,clc,4%bent, 0.2%antifoamer,tail:200sx,14.8ppg,y-1.36,clc,5%salt,0.1pps poly STG
 2:LEAD:270SX,13.5PPG,Y-1.73,CLC,4%BENT,1%CACL,TAIL:295SX,14.8PPG Y-1.33,CLC,1%CACL, PROD:15.5PPG,K-
 55,LT&C,17PPF,K-55,LT&C,LEAD:290SX,12.4PPG,Y-2.15, 35.65POZ,CLH,5%SALT,6%BENT,0.1PPS POLY,0.2%
 ANTIFOAMER,TAIL:645SX, 14.2PPG,Y-1.36,50:50POZ,CLH,5%SALT,2%BENT,0.1PPS POLY,0.3%UNIFLAC, 0.2%
 ANTIFOAMER

Proposed Blowout Prevention Program

Type	Working Pressure	Test Pressure	Manufacturer
Annular	3000	2500	
Blind	3000	2500	
Pipe	3000	2500	

I hereby certify that the information given above is true and complete to the best of my knowledge and belief. I further certify that the drilling pit will be constructed according to NMOCD guidelines <input type="checkbox"/> , a general permit <input type="checkbox"/> , or an (attached) alternative OCB-approved plan <input type="checkbox"/> .	OIL CONSERVATION DIVISION
Printed Name: Electronically filed by Denise Pinkerton	Approved By: Paul Kautz
Title: Regulatory Specialist	Title: Geologist
Email Address: leakejd@chevron.com	Approved Date: 4/14/2008 Expiration Date: 4/14/2010
Date: 12/12/2007 Phone: 432-687-7375	Conditions of Approval Attached

DISTRICT I
1625 N. Franch Dr., Hobbs, NM 88240

DISTRICT II
1301 W. Grand Ave., Artesia, NM 88210

DISTRICT III
1000 Rio Brazos Rd., Aztec, NM 87410

DISTRICT IV
1220 St. Francis Dr., Santa Fe, NM 87505

State of New Mexico
Energy, Minerals and Natural Resources Department

Form C-102
Revised October 12, 2005

Submit to Appropriate District Office
State Lease-4 copies
Fee Lease-3 copies

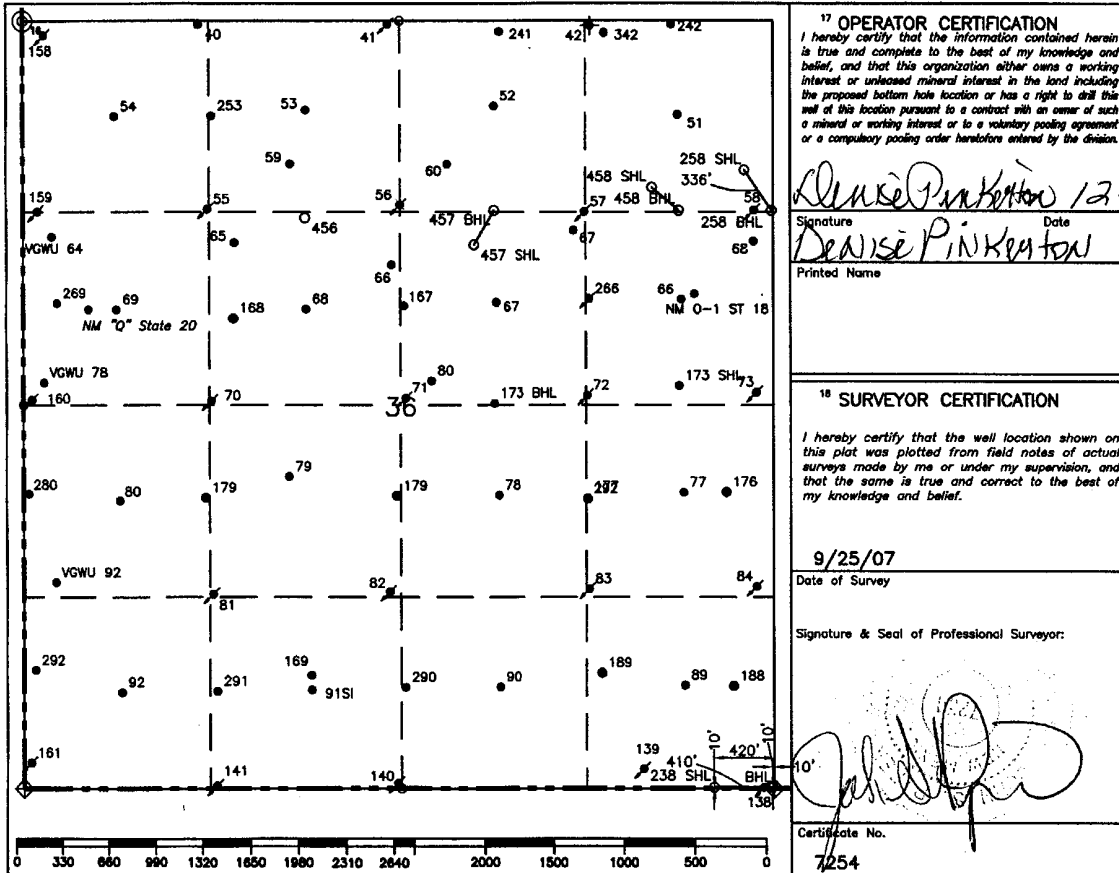
OIL CONSERVATION DIVISION
1220 South St. Francis Drive
Santa Fe, NM 87505

☐ AMENDED REPORT

WELL LOCATION AND ACREAGE DEDICATION PLAT

1 API Number		2 Pool Code		3 Pool Name					
		62180		San Andres (VACUUM GRAYBURG)					
4 Property Code		5 Property Name							
		Central Vacuum Unit							
6 Well Number		238							
7 OGRID No.		8 Operator Name							
4323		CHEVRON USA, INC.							
9 Elevation		3992'							
10 Surface Location									
UL or lot no.	Section	Township	Range	Lot Idn	Feet from the	North/South line	Feet from the	East/West line	County
P	36	17-S	34-E		10'	South	420'	East	Lea
11 Bottom Hole Location If Different From Surface									
UL or lot no.	Section	Township	Range	Lot Idn	Feet from the	North/South line	Feet from the	East/West line	County
P	36	17-S	34-E		10'	South	10'	East	Lea
12 Dedicated Acres		13 Joint or Infill		14 Consolidation Code		15 Order No.			
10									

NO ALLOWABLE WILL BE ASSIGNED TO THIS COMPLETION UNTIL ALL INTERESTS HAVE BEEN CONSOLIDATED
OR A NON-STANDARD UNIT HAS BEEN APPROVED BY THE DIVISION.



○ = Staked Location ● = Producing Well ● = Injection Well ⊕ = Water Supply Well ⊕ = Plugged & Abandon Well
⊙ = Found Section Corner, 2 or 3" Iron Pipe & GLO B.C. ○ = Found /4 Section Corner, 1" Iron Pipe & GLO B.C.

ADDITIONAL INFORMATION ON THE LOCATION

State Plane Coordinates		SHL= 795360.61 (1927 NAD= 754181.60)	
SHL= 650053.17 (1927 NAD= 649988.13)		BHL= 795770.65 (1927 NAD= 754501.65)	
SHL= 650058.45 (1927 NAD= 649993.40)			
SHL= 32°47'03.484"		SHL= 103°30'24.376"	
Latitude BHL= 32°47'03.505"		Longitude BHL= 103°30'19.572"	
Zone North American Datum		Combined Grid Factor	
East 1983		0.999982986	
Drawing File		Coordinate File	
CVU-Sec36.Dwg		Buckeye.Crd	
Field Book			
N/A			

Permit Comments

Operator: CHEVRON U S A INC , 4323

Well: CENTRAL VACUUM UNIT #238

API: 30-025-38849

Created By	Comment	Comment Date
DMULL	Holding for Non-Standard Location approval.	12/12/2007
DMULL	NSL-5789-A, 04/02/08, SUR: 10/S & 420/E, BHL: 10/S & 10/E, Vacuum Grayburg-San Andres.	4/14/2008

Permit Conditions of Approval

Operator: CHEVRON U S A INC , 4323

Well: CENTRAL VACUUM UNIT #238

API: 30-025-38849

OCD Reviewer	Condition
DMULL	Will require administrative order for non-standard location
pkautz	Pit construction and closure must satisfy all requirements of your approved plan, O.C.D. Rule 19.15.2.50, and the Pit and Below-Grade Tank Guidelines
DMULL	NSL-5789-A, 04/02/08, SUR: 10/S & 420/E, BHL: 10/S & 10/E, Vacuum Grayburg-San Andres.