

District I
 1625 N. French Dr., Hobbs, NM 88240
 Phone:(575) 393-6161 Fax:(575) 393-0720
District II
 811 S. First St., Artesia, NM 88210
 Phone:(575) 748-1283 Fax:(575) 748-9720
District III
 1000 Rio Brazos Rd., Aztec, NM 87410
 Phone:(505) 334-6178 Fax:(505) 334-6170
District IV
 1220 S. St Francis Dr., Santa Fe, NM 87505
 Phone:(505) 476-3470 Fax:(505) 476-3462

State of New Mexico
Energy, Minerals and Natural Resources
Oil Conservation Division
1220 S. St Francis Dr.
Santa Fe, NM 87505

Form C-101
 August 1, 2011
 Permit 148334

APPLICATION FOR PERMIT TO DRILL, RE-ENTER, DEEPEN, PLUGBACK, OR ADD A ZONE

1. Operator Name and Address CIMAREX ENERGY CO. 600 N MARIENFELD STREET MIDLAND , TX 79701		2. OGRID Number 215099
		3. API Number 30-015-40251
4. Property Code 39175	5. Property Name ARKANSAS 23 FEE	6. Well No. 004

7. Surface Location

UL - Lot	Section	Township	Range	Lot Idn	Feet From	N/S Line	Feet From	E/W Line	County
F	23	19S	25E	F	2310	N	2310	W	EDDY

8. Pool Information

NORTH SEVEN RIVERS; GLORIETA - YESO	97565
-------------------------------------	-------

Additional Well Information

9. Work Type New Well	10. Well Type OIL	11. Cable/Rotary	12. Lease Type Private	13. Ground Level Elevation 3437
14. Multiple N	15. Proposed Depth 3000	16. Formation Blinebry	17. Contractor	18. Spud Date 6/5/2012
Depth to Ground water		Distance from nearest fresh water well		Distance to nearest surface water

19. Proposed Casing and Cement Program

Type	Hole Size	Casing Type	Casing Weight/ft	Setting Depth	Sacks of Cement	Estimated TOC
Surf	14.75	9.625	36	950	1200	0
Prod	8.75	5.5	17	3000	640	0

Casing/Cement Program: Additional Comments

--

Proposed Blowout Prevention Program

Type	Working Pressure	Test Pressure	Manufacturer
DoubleRam	3000	3000	Cameran

I hereby certify that the information given above is true and complete to the best of my knowledge and belief. I further certify that the drilling pit will be constructed according to NMOCD guidelines <input type="checkbox"/> , a general permit <input type="checkbox"/> , or an (attached) alternative OCD-approved plan <input type="checkbox"/> .	OIL CONSERVATION DIVISION	
	Approved By: Randy Dade	
	Title: District Supervisor	
	Approved Date: 5/9/2012	Expiration Date: 5/9/2014
	Email Address: gholloway@cimarex.com	
Date: 5/8/2012	Phone: 918-295-1658	Conditions of Approval Attached

DISTRICT I
1825 N. French Dr., Hobbs, NM 88240
Phone (575) 393-8181 Fax: (575) 393-0720

DISTRICT II
811 S. First St., Artesia, NM 88210
Phone (575) 746-1263 Fax: (575) 746-9720

DISTRICT III
1000 Rio Brazos Rd., Aztec, NM 87410
Phone (505) 594-8178 Fax: (505) 331-8170

DISTRICT IV
1220 S. St. Francis Dr., Santa Fe, NM 87505
Phone (505) 478-3460 Fax: (505) 478-3462

State of New Mexico
Energy, Minerals and Natural Resources Department

Form C-102
Revised August 1, 2011

Submit one copy to appropriate
District Office

OIL CONSERVATION DIVISION
1220 South St. Francis Dr.
Santa Fe, New Mexico 87505

WELL LOCATION AND ACREAGE DEDICATION PLAT

AMENDED REPORT

API Number 30-015-	Pool Code 50270	Pool Name Penasco Draw; SA-Yeso (Assoc)
Property Code	Property Name ARKANSAS 23 FEE	Well Number 4
OGRID No. 215099	Operator Name CIMAREX ENERGY CO.	Elevation 3437'

Surface Location

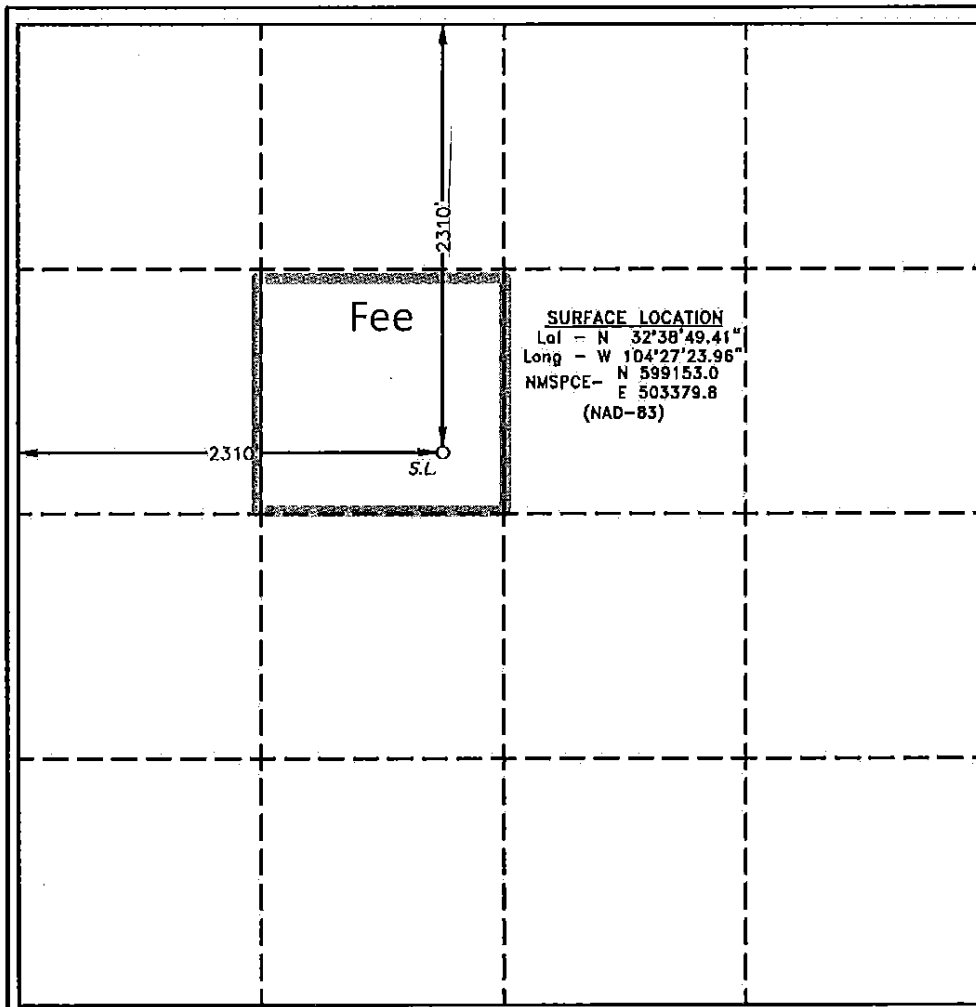
UL or lot No.	Section	Township	Range	Lot Idn	Feet from the	North/South line	Feet from the	East/West line	County
F	23	19 S	25 E		2310	NORTH	2310	WEST	EDDY

Bottom Hole Location If Different From Surface

UL or lot No.	Section	Township	Range	Lot Idn	Feet from the	North/South line	Feet from the	East/West line	County

Dedicated Acres 40	Joint or Infill	Consolidation Code	Order No.
-----------------------	-----------------	--------------------	-----------

NO ALLOWABLE WILL BE ASSIGNED TO THIS COMPLETION UNTIL ALL INTERESTS HAVE BEEN CONSOLIDATED
OR A NON-STANDARD UNIT HAS BEEN APPROVED BY THE DIVISION



OPERATOR CERTIFICATION

I hereby certify that the information contained herein is true and complete to the best of my knowledge and belief, and that this organization either owns a working interest or unleased mineral interest in the land including the proposed bottom hole location or has a right to drill this well at this location pursuant to a contract with an owner of such a mineral or working interest, or to a voluntary pooling agreement or a compulsory pooling order heretofore entered by the division.

Paula Brunson 5/8/2012
Signature Date

Paula Brunson
Printed Name
pbrunson@cimarex.com
Email Address

SURVEYOR CERTIFICATION

I hereby certify that the well location shown on this plat was plotted from field notes of actual surveys made by me or under my supervision, and that the same is true and correct to the best of my belief.

Date Surveyed
Signature & Seal of Professional Surveyor

Gary L. Jones
Certificate No. Gary L. Jones 7977

BASIN SURVEYS 26674

Permit Comments

Operator: CIMAREX ENERGY CO. , 215099

Well: ARKANSAS 23 FEE #004

API: 30-015-40251

Created By	Comment	Comment Date
CSHAPARD	Land p/P	5/9/2012

Permit Conditions of Approval

Operator: CIMAREX ENERGY CO. , 215099

Well: ARKANSAS 23 FEE #004

API: 30-015-40251

OCD Reviewer	Condition
CSHAPARD	Once the well is spud, to prevent ground water contamination through whole or partial conduits from the surface, the operator shall drill without interruption through the fresh water zone or zones and shall immediately set in cement the water protection string