

**District I**  
1625 N. French Dr., Hobbs, NM 88240  
Phone:(575) 393-6161 Fax:(575) 393-0720  
**District II**  
811 S. First St., Artesia, NM 88210  
Phone:(575) 748-1283 Fax:(575) 748-9720  
**District III**  
1000 Rio Brazos Rd., Aztec, NM 87410  
Phone:(505) 334-6178 Fax:(505) 334-6170  
**District IV**  
1220 S. St Francis Dr., Santa Fe, NM 87505  
Phone:(505) 476-3470 Fax:(505) 476-3462

**State of New Mexico**  
**Energy, Minerals and Natural Resources**  
**Oil Conservation Division**  
**1220 S. St Francis Dr.**  
**Santa Fe, NM 87505**

Form C-101  
August 1, 2011  
Permit 163209

**APPLICATION FOR PERMIT TO DRILL, RE-ENTER, DEEPEN, PLUGBACK, OR ADD A ZONE**

1. Operator Name and Address APACHE CORP 303 Veterans Airpark Lane Midland, TX 79705		2. OGRID Number 873
4. Property Code 302708		3. API Number 30-025-41043
5. Property Name NORTH MONUMENT G/SA UNIT		6. Well No. 390

**7. Surface Location**

UL - Lot	Section	Township	Range	Lot Idn	Feet From	N/S Line	Feet From	E/W Line	County
K	30	19S	37E	K	2587	S	2578	W	LEA

**8. Proposed Bottom Hole Location**

UL - Lot	Section	Township	Range	Lot Idn	Feet From	N/S Line	Feet From	E/W Line	County
K	30	19S	37E	K	2587	S	2578	W	Lea

**9. Pool Information**

EUNICE MONUMENT;GRAYBURG-SAN ANDRES	23000
-------------------------------------	-------

**Additional Well Information**

11. Work Type New Well	12. Well Type OIL	13. Cable/Rotary	14. Lease Type State	15. Ground Level Elevation 3627
16. Multiple N	17. Proposed Depth 4100	18. Formation San Andres	19. Contractor	20. Spud Date
Depth to Ground water 13		Distance from nearest fresh water well > 1000		Distance to nearest surface water > 1000

**21. Proposed Casing and Cement Program**

Type	Hole Size	Casing Type	Casing Weight/ft	Setting Depth	Sacks of Cement	Estimated TOC
Surf	11	8.625	24	1265	440	
Prod	7.875	5.5	17	4037	580	

**Casing/Cement Program: Additional Comments**

--

**22. Proposed Blowout Prevention Program**

Type	Working Pressure	Test Pressure	Manufacturer
Hydril	3000	2000	

23. I hereby certify that the information given above is true and complete to the best of my knowledge and belief. I further certify I have complied with 19.15.14.9 (A) NMAC <input checked="" type="checkbox"/> and/or 19.15.14.9 (B) NMAC <input checked="" type="checkbox"/> if applicable. Signature:	<b>OIL CONSERVATION DIVISION</b> Approved By: Paul Kautz	
Printed Name: Electronically filed by Bobby Smith	Title: Geologist	
Title:	Approved Date: 3/5/2013	Expiration Date: 3/5/2015
Email Address: bobby.smith@apachecorp.com		
Date: 2/28/2013	Phone: 432-818-1020	Conditions of Approval Attached

DISTRICT I  
1625 N. French Dr., Hobbs, NM 88240  
Phone (505) 393-6191 Fax: (505) 393-0720

DISTRICT II  
811 S. First St., Artesia, NM 88210  
Phone (505) 748-1283 Fax: (505) 748-8720

DISTRICT III  
1000 Rio Brazos Rd., Aztec, NM 87410  
Phone (505) 334-4178 Fax: (505) 334-6170

DISTRICT IV  
1220 S. St. Francis Dr., Santa Fe, NM 87505  
Phone (505) 476-3460 Fax: (505) 476-3462

State of New Mexico  
Energy, Minerals and Natural Resources Department

Form C-102  
Revised August 1, 2011

Submit one copy to appropriate  
District Office

OIL CONSERVATION DIVISION  
1220 South St. Francis Dr.  
Santa Fe, New Mexico 87505

WELL LOCATION AND ACREAGE DEDICATION PLAT

☐ AMENDED REPORT

API Number <b>30-025-</b>	Pool Code <b>23000</b>	Pool Name <b>Eunice Monument: Grayburg San Andres</b>
Property Code <b>302708</b>	Property Name <b>NMGSAU</b>	Well Number <b>390</b>
GRID No. <b>873</b>	Operator Name <b>APACHE CORPORATION</b>	Elevation <b>3627</b>

Surface Location

UL or lot No.	Section	Township	Range	Lot Idn	Feet from the	North/South line	Feet from the	East/West line	County
K	30	19 S	37 E		2587	SOUTH	2578	WEST	LEA

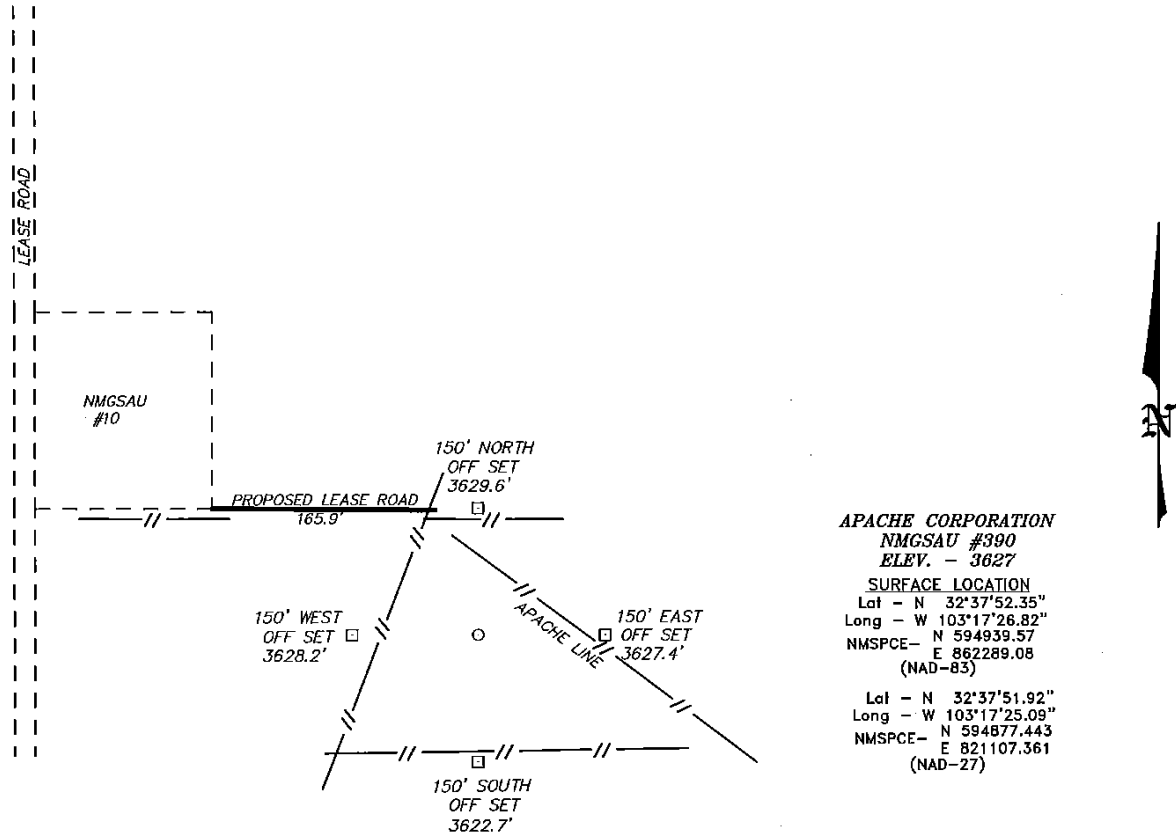
Bottom Hole Location If Different From Surface

UL or lot No.	Section	Township	Range	Lot Idn	Feet from the	North/South line	Feet from the	East/West line	County
Dedicated Acres <b>40</b>	Joint or Infill	Consolidation Code	Order No.						

NO ALLOWABLE WILL BE ASSIGNED TO THIS COMPLETION UNTIL ALL INTERESTS HAVE BEEN CONSOLIDATED  
OR A NON-STANDARD UNIT HAS BEEN APPROVED BY THE DIVISION

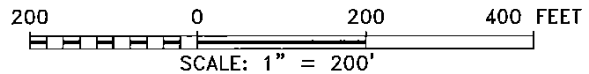
N 597640.83 E 859685.89 (NAD-83)		N 597643.89 E 862272.95 (NAD-83)		N 597647.80 E 864911.30 (NAD-83)	<p><b>OPERATOR CERTIFICATION</b></p> <p>I hereby certify that the information contained herein is true and complete to the best of my knowledge and belief, and that this organization either owns a working interest or unleased mineral interest in the land including the proposed bottom hole location or has a right to drill this well at this location pursuant to a contract with an owner of such a mineral or working interest, or to a voluntary pooling agreement or a compulsory pooling order heretofore entered by the division.</p> <p><i>Vicki Brown</i> 2/27/13 Signature Date <b>Vicki Brown</b> Printed Name <b>vicki.brown@apachecorp.com</b> Email Address</p> <p><b>SURVEYOR CERTIFICATION</b></p> <p>I hereby certify that the well location shown on this plat was plotted from field notes of actual surveys made by me or under my supervision, and that the same is true and correct to the best of my belief.</p> <p><b>JANUARY 14, 2013</b> Date Surveyed <b>GARY L. JONES</b> Signature of Professional Surveyor <b>7977</b> Certificate No. Gary L. Jones 7977 <b>BASIN SURVEYS 27981</b></p>
	2578		2587		
		<p><b>SURFACE LOCATION</b> Lat - N 32°37'52.35" Long - W 103°17'26.82" NMSPCE- N 594939.57 E 862289.08 (NAD-83)  Lat - N 32°37'51.92" Long - W 103°17'25.09" NMSPCE- N 594877.443 E 821107.361 (NAD-27)</p>			
		N 592354.60 E 862544.07 (NAD-83)		N 592371.15 E 864963.67 (NAD-83)	

SECTION 30, TOWNSHIP 19 SOUTH, RANGE 37 EAST, N.M.P.M.,  
LEA COUNTY, NEW MEXICO.



DRIVING DIRECTIONS

FROM MADDOX ROAD AND PEARL VALLEY GO EAST .4 MILES TURN NORTH  
GO .3 MILES TO PROPOSED LOCATION.



**BASIN SURVEYS** P.O. BOX 1786-HOBBS, NEW MEXICO

W.O. Number: 27981 Drawn By: D. JONES

Date: 02-05-20113 Disk: DAJ 27981

**APACHE CORPORATION**

REF: NMGSAU #390 / WELL PAD TOPO

THE NMGSAU #390 LOCATED 2587'

FROM THE SOUTH LINE AND 2578' FROM THE WEST LINE OF

SECTION 30, TOWNSHIP 19 SOUTH, RANGE 37 EAST,

N.M.P.M., LEA COUNTY, NEW MEXICO.

Survey Date: 01-31-2013 Sheet 1 of 1 Sheets

## Permit Comments

Operator: APACHE CORP , 873

Well: NORTH MONUMENT G/SA UNIT #390

API: 30-025-41043

Created By	Comment	Comment Date
pkautz	Land s/S	2/28/2013
CHERRERA	OCD RECEIVED FORM C144 CLEZ. OCD PERMIT # P1-05844	3/5/2013

## Permit Conditions of Approval

**Operator:** APACHE CORP , 873

**Well:** NORTH MONUMENT G/SA UNIT #390

**API:** 30-025-41043

OCD Reviewer	Condition
pkautz	Once the well is spud, to prevent ground water contamination through whole or partial conduits from the surface, the operator shall drill without interruption through the fresh water zone or zones and shall immediately set in cement the water protection string
pkautz	In order to seal off protectable water, surface casing must be set 25' below top Rustler Anhydrite