

**District I**  
1625 N. French Dr., Hobbs, NM 88240  
Phone:(575) 393-6161 Fax:(575) 393-0720  
**District II**  
811 S. First St., Artesia, NM 88210  
Phone:(575) 748-1283 Fax:(575) 748-9720  
**District III**  
1000 Rio Brazos Rd., Aztec, NM 87410  
Phone:(505) 334-6178 Fax:(505) 334-6170  
**District IV**  
1220 S. St Francis Dr., Santa Fe, NM 87505  
Phone:(505) 476-3470 Fax:(505) 476-3462

**State of New Mexico**  
**Energy, Minerals and Natural Resources**  
**Oil Conservation Division**  
**1220 S. St Francis Dr.**  
**Santa Fe, NM 87505**

Form C-101  
August 1, 2011  
Permit 169289

**APPLICATION FOR PERMIT TO DRILL, RE-ENTER, DEEPEN, PLUGBACK, OR ADD A ZONE**

1. Operator Name and Address APACHE CORP 303 Veterans Airpark Lane Midland, TX 79705		2. OGRID Number 873
4. Property Code 39734		3. API Number 30-015-41492
5. Property Name AB STATE 647		6. Well No. 008

**7. Surface Location**

UL - Lot	Section	Township	Range	Lot Idn	Feet From	N/S Line	Feet From	E/W Line	County
K	32	17S	28E	K	1620	S	2270	W	EDDY

**8. Proposed Bottom Hole Location**

UL - Lot	Section	Township	Range	Lot Idn	Feet From	N/S Line	Feet From	E/W Line	County
K	32	17S	28E	K	1620	S	2270	W	Eddy

**9. Pool Information**

ARTESIA; GLORIETA-YESO (O)	96830
----------------------------	-------

**Additional Well Information**

11. Work Type New Well	12. Well Type OIL	13. Cable/Rotary	14. Lease Type State	15. Ground Level Elevation 3679
16. Multiple N	17. Proposed Depth 5100	18. Formation Yeso Formation	19. Contractor	20. Spud Date
Depth to Ground water		Distance from nearest fresh water well		Distance to nearest surface water

**21. Proposed Casing and Cement Program**

Type	Hole Size	Casing Type	Casing Weight/ft	Setting Depth	Sacks of Cement	Estimated TOC
Surf	12.25	8.625	24	400	260	
Prod	7.875	5.5	17	5100	900	

**Casing/Cement Program: Additional Comments**

--

**22. Proposed Blowout Prevention Program**

Type	Working Pressure	Test Pressure	Manufacturer
Hydril	3000	2000	

23. I hereby certify that the information given above is true and complete to the best of my knowledge and belief. I further certify I have complied with 19.15.14.9 (A) NMAC <input checked="" type="checkbox"/> and/or 19.15.14.9 (B) NMAC <input checked="" type="checkbox"/> , if applicable. Signature: Printed Name: Electronically filed by Bobby Smith Title: Email Address: bobby.smith@apachecorp.com Date: 6/27/2013	<table border="1" style="width: 100%; border-collapse: collapse;"> <tr> <td colspan="2" style="text-align: center;"><b>OIL CONSERVATION DIVISION</b></td> </tr> <tr> <td colspan="2">Approved By: Randy Dade</td> </tr> <tr> <td>Title: District Supervisor</td> <td>Approved Date: 6/27/2013</td> </tr> <tr> <td colspan="2">Expiration Date: 6/27/2015</td> </tr> <tr> <td colspan="2">Conditions of Approval Attached</td> </tr> </table>	<b>OIL CONSERVATION DIVISION</b>		Approved By: Randy Dade		Title: District Supervisor	Approved Date: 6/27/2013	Expiration Date: 6/27/2015		Conditions of Approval Attached	
<b>OIL CONSERVATION DIVISION</b>											
Approved By: Randy Dade											
Title: District Supervisor	Approved Date: 6/27/2013										
Expiration Date: 6/27/2015											
Conditions of Approval Attached											

DISTRICT I  
2126 N. French Dr., Hobbs, NM 88240  
Phone (505) 393-8211 Fax: (505) 393-0720

DISTRICT II  
811 S. First St., Artesia, NM 88210  
Phone (505) 748-1283 Fax: (505) 748-9720

DISTRICT III  
1000 Rio Brazos Rd., Aztec, NM 87410  
Phone (505) 354-6178 Fax: (505) 354-6170

DISTRICT IV  
1210 S. St. Francis Dr., Santa Fe, NM 87505  
Phone (505) 478-3480 Fax: (505) 478-3482

State of New Mexico  
Energy, Minerals and Natural Resources Department

Form C-102  
Revised August 1, 2011

Submit one copy to appropriate  
District Office

OIL CONSERVATION DIVISION

1210 South St. Francis Dr.  
Santa Fe, New Mexico 87505

WELL LOCATION AND ACREAGE DEDICATION PLAT

☐ AMENDED REPORT

API Number <b>30-015</b>		Pool Code <b>96830</b>	Pool Name <b>Artesia; Glorieta - Yeso</b>
Property Code <b>39734</b>	Property Name <b>AB STATE 647</b>		Well Number <b>8</b>
GRID No. <b>873</b>	Operator Name <b>APACHE CORPORATION</b>		Elevation <b>3679</b>

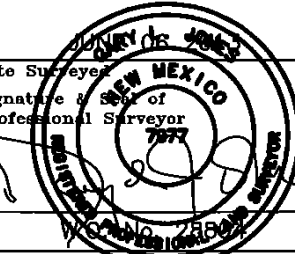
Surface Location

UL or lot No.	Section	Township	Range	Lot Idn	Feet from the	North/South line	Feet from the	East/West line	County
<b>K</b>	<b>32</b>	<b>17 S</b>	<b>28 E</b>		<b>1620</b>	<b>SOUTH</b>	<b>2270</b>	<b>WEST</b>	<b>EDDY</b>

Bottom Hole Location If Different From Surface

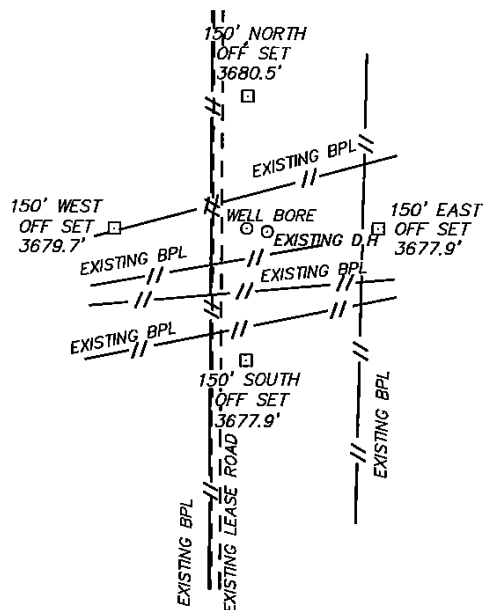
UL or lot No.	Section	Township	Range	Lot Idn	Feet from the	North/South line	Feet from the	East/West line	County
Dedicated Acres		Joint or Infill	Consolidation Code	Order No.					

NO ALLOWABLE WILL BE ASSIGNED TO THIS COMPLETION UNTIL ALL INTERESTS HAVE BEEN CONSOLIDATED  
OR A NON-STANDARD UNIT HAS BEEN APPROVED BY THE DIVISION

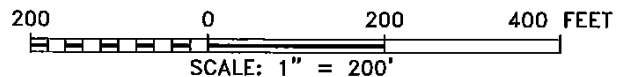
N 654017.13 E 580331.75 (NAD-83)		N 657060.70 E 582941.71 (NAD-83)	N 654103.79 E 585547.25 (NAD-83)	<p><b>OPERATOR CERTIFICATION</b></p> <p>I hereby certify that the information contained herein is true and complete to the best of my knowledge and belief, and that this organization either owns a working interest or unleased mineral interest in the land including the proposed bottom hole location or has a right to drill this well at this location pursuant to a contract with an owner of such a mineral or working interest, or to a voluntary pooling agreement or a compulsory pooling order heretofore entered by the division.</p> <p><u>Kristina Agee</u> 6/27/13 Signature Date</p> <p><u>Kristina Agee</u> Printed Name</p> <p><u>Kristina.agee@apachecorp.com</u> Email Address</p>
<p><b>SURFACE LOCATION</b></p> <p>Lat - N 32°47'17.18" Long - W 104°11'56.00" NMSPCE- N 650470.12 E 582656.62 (NAD-83)</p> <p>Lat - N 32°47'16.75" Long - W 104°11'54.11" NMSPCE- N 650407.19 E 541477.45 (NAD-27)</p>				
N 648805.41 E 580413.02 (NAD-83)	2270'	N 648857.37 E 583013.65 (NAD-83)	N 648910.14 E 585613.45 (NAD-83)	<p><b>SURVEYOR CERTIFICATION</b></p> <p>I hereby certify that the well location shown on this plat was plotted from field notes of actual surveys made by me or under my supervision, and that the same is true and correct to the best of my belief.</p> <p></p> <p>Date Surveyed Signature &amp; Seal of Professional Surveyor</p> <p>Certificate No. Gary L. Jones 7977</p> <p>BASIN SURVEYS 28804</p>

SECTION 32, TOWNSHIP 17 SOUTH, RANGE 28 EAST, N.M.P.M.,  
EDDY COUNTY, NEW MEXICO.

APACHE CORPORATION  
AB STATE 647 #8  
ELEV. - 3679  
SURFACE LOCATION  
Lat - N 32°47'17.18"  
Long - W 104°11'56.00"  
NMSPCE- N 650470.12  
E 582656.62  
(NAD-83)  
Lat - N 32°47'16.75"  
Long - W 104°11'54.11"  
NMSPCE- N 650407.19  
E 541477.45  
(NAD-27)



WELL IS LOCATED ±12 MILES SOUTHEAST OF ARTESIA, NEW MEXICO.



Directions to Location:

FROM HIGHWAY 82 AND ILLINOIS CAMP GO SOUTH  
0.4 MILES TO LRE TANK BATTERY, GO SOUTHEAST  
0.1 MILES TO PROPOSED LOCATION.

**BASIN SURVEYS** P.O. BOX 1786-HOBBS, NEW MEXICO

W.O. Number: 28804 Drawn By: D. JONES

Date: 06-12-2013 Disk: DAJ 28804

**APACHE CORPORATION**

REF: AB STATE 647 #8/ WELL PAD TOPO

THE AB STATE 647 #8 LOCATED 1620'

FROM THE SOUTH LINE AND 2270' FROM THE WEST LINE OF  
SECTION 32, TOWNSHIP 17 SOUTH, RANGE 28 EAST,  
N.M.P.M., EDDY COUNTY, NEW MEXICO.

Survey Date: 06-06-2013 Sheet 1 of 1 Sheets

## Permit Conditions of Approval

**Operator:** APACHE CORP , 873

**Well:** AB STATE 647 #008

**API:** 30-015-41492

OCD Reviewer	Condition
RDADE	Once the well is spud, to prevent ground water contamination through whole or partial conduits from the surface, the operator shall drill without interruption through the fresh water zone or zones and shall immediately set in cement the water protection string
RDADE	Pit construction and closure must satisfy all requirements of your approved plan, O.C.D. Rule 19.15.2.50, and the Pit and Below-Grade Tank Guidelines