

District I
1625 N. French Dr., Hobbs, NM 88240
Phone:(575) 393-6161 Fax:(575) 393-0720
District II
811 S. First St., Artesia, NM 88210
Phone:(575) 748-1283 Fax:(575) 748-9720
District III
1000 Rio Brazos Rd., Aztec, NM 87410
Phone:(505) 334-6178 Fax:(505) 334-6170
District IV
1220 S. St Francis Dr., Santa Fe, NM 87505
Phone:(505) 476-3470 Fax:(505) 476-3462

State of New Mexico
Energy, Minerals and Natural Resources
Oil Conservation Division
1220 S. St Francis Dr.
Santa Fe, NM 87505

Form C-101
August 1, 2011
Permit 169031

APPLICATION FOR PERMIT TO DRILL, RE-ENTER, DEEPEN, PLUGBACK, OR ADD A ZONE

| | | |
|---|--|-------------------------------|
| 1. Operator Name and Address APACHE CORP 303 Veterans Airpark Lane Midland, TX 79705 | | 2. OGRID Number 873 |
| 4. Property Code 39734 | | 3. API Number 30-015-41494 |
| 5. Property Name AB STATE 647 | | 6. Well No. 010 |

7. Surface Location

| UL - Lot | Section | Township | Range | Lot Idn | Feet From | N/S Line | Feet From | E/W Line | County |
|----------|---------|----------|-------|---------|-----------|----------|-----------|----------|--------|
| N | 32 | 17S | 28E | N | 1140 | S | 1650 | W | EDDY |

8. Proposed Bottom Hole Location

| UL - Lot | Section | Township | Range | Lot Idn | Feet From | N/S Line | Feet From | E/W Line | County |
|----------|---------|----------|-------|---------|-----------|----------|-----------|----------|--------|
| N | 32 | 17S | 28E | N | 1140 | S | 1650 | W | Eddy |

9. Pool Information

| | |
|----------------------------|-------|
| ARTESIA; GLORIETA-YESO (O) | 96830 |
|----------------------------|-------|

Additional Well Information

| | | | | |
|---------------------------|----------------------------|--|-------------------------|------------------------------------|
| 11. Work Type New Well | 12. Well Type OIL | 13. Cable/Rotary | 14. Lease Type State | 15. Ground Level Elevation 3677 |
| 16. Multiple N | 17. Proposed Depth 5100 | 18. Formation Yeso Formation | 19. Contractor | 20. Spud Date |
| Depth to Ground water | | Distance from nearest fresh water well | | Distance to nearest surface water |

21. Proposed Casing and Cement Program

| Type | Hole Size | Casing Type | Casing Weight/ft | Setting Depth | Sacks of Cement | Estimated TOC |
|------|-----------|-------------|------------------|---------------|-----------------|---------------|
| Surf | 12.25 | 8.625 | 24 | 400 | 260 | |
| Prod | 7.875 | 5.5 | 17 | 5100 | 900 | |

Casing/Cement Program: Additional Comments

| |
|--|
| |
|--|

22. Proposed Blowout Prevention Program

| Type | Working Pressure | Test Pressure | Manufacturer |
|--------|------------------|---------------|--------------|
| Hydril | 3000 | 2000 | |

| | |
|---|--|
| 23. I hereby certify that the information given above is true and complete to the best of my knowledge and belief. I further certify I have complied with 19.15.14.9 (A) NMAC <input checked="" type="checkbox"/> and/or 19.15.14.9 (B) NMAC <input checked="" type="checkbox"/> , if applicable. Signature: Printed Name: Electronically filed by Bobby Smith Title: Email Address: bobby.smith@apachecorp.com Date: 6/27/2013 | <div style="text-align: center;">OIL CONSERVATION DIVISION</div> Approved By: Randy Dade Title: District Supervisor Approved Date: 6/27/2013 Expiration Date: 6/27/2015 Conditions of Approval Attached |
| Phone: 432-818-1020 | |

DISTRICT I
2126 N. French Dr., Hobbs, NM 88240
Phone (505) 393-0211 Fax: (505) 393-0720

DISTRICT II
811 S. First St., Artesia, NM 88210
Phone (505) 748-1283 Fax: (505) 748-0720

DISTRICT III
1000 Rio Brazos Rd., Aztec, NM 87410
Phone (505) 334-0170 Fax: (505) 334-0170

DISTRICT IV
1210 S. St. Francis Dr., Santa Fe, NM 87505
Phone (505) 476-3400 Fax: (505) 476-3482

State of New Mexico
Energy, Minerals and Natural Resources Department

Form C-102
Revised August 1, 2011

Submit one copy to appropriate
District Office

OIL CONSERVATION DIVISION
1210 South St. Francis Dr.
Santa Fe, New Mexico 87505

WELL LOCATION AND ACREAGE DEDICATION PLAT

☐ AMENDED REPORT

| | | |
|-------------------------------|--|---|
| API Number 30-015- | Pool Code 96830 | Pool Name Adesia, Glorieta-Yeso |
| Property Code 39734 | Property Name AB STATE 647 | Well Number 10 |
| GRID No. 873 | Operator Name APACHE CORPORATION | Elevation 3677 |

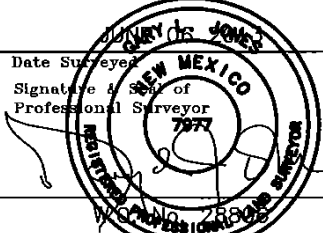
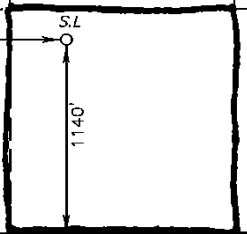
Surface Location

| UL or lot No. | Section | Township | Range | Lot Idn | Feet from the | North/South line | Feet from the | East/West line | County |
|---------------|---------|----------|-------|---------|---------------|------------------|---------------|----------------|--------|
| N | 32 | 17 S | 28 E | | 1140 | SOUTH | 1650 | WEST | EDDY |

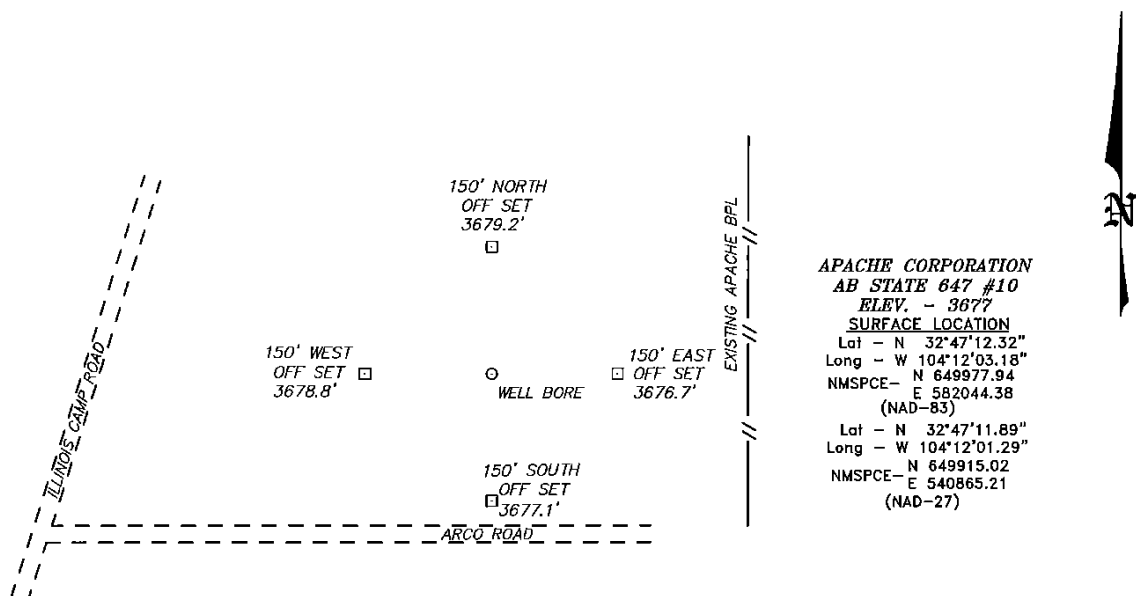
Bottom Hole Location If Different From Surface

| UL or lot No. | Section | Township | Range | Lot Idn | Feet from the | North/South line | Feet from the | East/West line | County |
|-----------------|-----------------|--------------------|-----------|---------|---------------|------------------|---------------|----------------|--------|
| | | | | | | | | | |
| Dedicated Acres | Joint or Infill | Consolidation Code | Order No. | | | | | | |

NO ALLOWABLE WILL BE ASSIGNED TO THIS COMPLETION UNTIL ALL INTERESTS HAVE BEEN CONSOLIDATED
OR A NON-STANDARD UNIT HAS BEEN APPROVED BY THE DIVISION

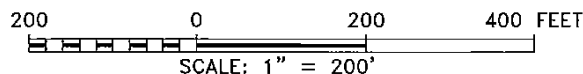
| | | | | |
|--|---|--|--|---|
| N 654017.13 E 580331.75 (NAD-83) | | N 657060.70 E 582941.71 (NAD-83) | N 654103.79 E 585547.25 (NAD-83) | OPERATOR CERTIFICATION <i>I hereby certify that the information contained herein is true and complete to the best of my knowledge and belief, and that this organization either owns a working interest or released mineral interest in the land including the proposed bottom hole location or has a right to drill this well at this location pursuant to a contract with an owner of such a mineral or working interest, or to a voluntary pooling agreement or a compulsory pooling order heretofore entered by the division.</i> <u>Kristina Agee 6/27/13</u> Signature Date <u>Kristina Agee</u> Printed Name <u>Kristina.agee@apachecorp.com</u> Email Address |
| | | | | |
| | | | | |
| | | | | SURVEYOR CERTIFICATION <i>I hereby certify that the well location shown on this plat was plotted from field notes of actual surveys made by me or under my supervision, and that the same is true and correct to the best of my belief.</i>  Date Surveyed Signature & Seal of Professional Surveyor Certificate No. Gary L. Jones 7977 BASIN SURVEYS 28806 |
| | | | | |
| | | | | |
| | SURFACE LOCATION Lat - N 32°47'12.32" Long - W 104°12'03.18" NMSPC- N 649977.94 E 582044.38 (NAD-83) Lat - N 32°47'11.89" Long - W 104°12'01.29" NMSPC- N 649915.02 E 540865.21 (NAD-27) | 32.786636 104.200358 | N 651507.35 E 585577.67 (NAD-83) | |
| |  | | | |
| N 648805.41 E 580413.02 (NAD-83) | | N 648857.37 E 583013.65 (NAD-83) | N 648910.14 E 585613.45 (NAD-83) | |

SECTION 32, TOWNSHIP 17 SOUTH, RANGE 28 EAST, N.M.P.M.,
EDDY COUNTY, NEW MEXICO.



APACHE CORPORATION
AB STATE 647 #10
ELEV. - 3677
SURFACE LOCATION
Lat - N 32°47'12.32"
Long - W 104°12'03.18"
NMSPC- N 649977.94
E 582044.38
(NAD-83)
Lat - N 32°47'11.89"
Long - W 104°12'01.29"
NMSPC- N 649915.02
E 540865.21
(NAD-27)

WELL IS LOCATED ±12 MILES SOUTHEAST OF ARTESIA, NEW MEXICO.



Directions to Location:

FROM ILLINOIS CAMP AND ARCO ROAD GO EAST ON
ARCO ROAD .1 MILE TO PROPOSED LOCATION.

APACHE CORPORATION

REF: AB STATE 647 #10/ WELL PAD TOPO

THE AB STATE 647 #10 LOCATED 1140'

FROM THE SOUTH LINE AND 1650' FROM THE WEST LINE OF
SECTION 32, TOWNSHIP 17 SOUTH, RANGE 28 EAST,

N.M.P.M., EDDY COUNTY, NEW MEXICO.

BASIN SURVEYS P.O. BOX 1786—HOBBS, NEW MEXICO

W.O. Number: 28806

Drawn By: D. JONES

Date: 06-12-2013

Disk: DAJ 28806

Survey Date: 06-06-2013

Sheet 1 of 1 Sheets

Permit Conditions of Approval

Operator: APACHE CORP , 873

Well: AB STATE 647 #010

API: 30-015-41494

| OCD Reviewer | Condition |
|-----------------|--|
| RDADE | Once the well is spud, to prevent ground water contamination through whole or partial conduits from the surface, the operator shall drill without interruption through the fresh water zone or zones and shall immediately set in cement the water protection string |
| RDADE | Pit construction and closure must satisfy all requirements of your approved plan, O.C.D. Rule 19.15.2.50, and the Pit and Below-Grade Tank Guidelines |