

District I
1625 N. French Dr., Hobbs, NM 88240
Phone:(575) 393-8161 Fax:(575) 393-0720
District II
811 S. First St., Artesia, NM 88210
Phone:(575) 748-1283 Fax:(575) 748-9720
District III
1000 Rio Brazos Rd., Aztec, NM 87410
Phone:(505) 334-6178 Fax:(505) 334-6170
District IV
1220 S. St Francis Dr., Santa Fe, NM 87505
Phone:(505) 476-3470 Fax:(505) 476-3462

State of New Mexico
Energy, Minerals and Natural Resources
Oil Conservation Division
1220 S. St Francis Dr.
Santa Fe, NM 87505

Form C-101
August 1, 2011
Permit 170863

APPLICATION FOR PERMIT TO DRILL, RE-ENTER, DEEPEN, PLUGBACK, OR ADD A ZONE

1. Operator Name and Address APACHE CORP 303 Veterans Airpark Lane Midland, TX 79705		2. OGRID Number 873
4. Property Code 23112		3. API Number 30-025-41435
5. Property Name SOUTHLAND ROYALTY A		6. Well No. 002H

7. Surface Location

UL - Lot H	Section 9	Township 21S	Range 37E	Lot Idn H	Feet From 2310	N/S Line N	Feet From 640	E/W Line E	County Lea
---------------	--------------	-----------------	--------------	--------------	-------------------	---------------	------------------	---------------	---------------

8. Proposed Bottom Hole Location

UL - Lot I	Section 4	Township 21S	Range 37E	Lot Idn I	Feet From 2310	N/S Line S	Feet From 660	E/W Line E	County Lea
---------------	--------------	-----------------	--------------	--------------	-------------------	---------------	------------------	---------------	---------------

9. Pool Information

WANTZ/ABO	62700
-----------	-------

Additional Well Information

11. Work Type New Well	12. Well Type OIL	13. Cable/Rotary	14. Lease Type Private	15. Ground Level Elevation 3465
16. Multiple N	17. Proposed Depth 11288	18. Formation Abo	19. Contractor	20. Spud Date
Depth to Ground water		Distance from nearest fresh water well		Distance to nearest surface water

☒ We will be using a closed-loop system in lieu of lined pits

21. Proposed Casing and Cement Program

Type	Hole Size	Casing Size	Casing Weight/ft	Setting Depth	Sacks of Cement	Estimated TOC
Surf	17.5	13.375	48	1310	980	
Int1	11	8.625	32	4550	1250	
Prod	7.875	5.5	20	11288	1800	

Casing/Cement Program: Additional Comments

--

22. Proposed Blowout Prevention Program

Type	Working Pressure	Test Pressure	Manufacturer
Hydril	3000	2000	

23. I hereby certify that the information given above is true and complete to the best of my knowledge and belief. I further certify I have complied with 19.15.14.9 (A) NMAC <input checked="" type="checkbox"/> and/or 19.15.14.9 (B) NMAC <input checked="" type="checkbox"/> if applicable. Signature: Printed Name: Electronically filed by Bobby Smith Title: Email Address: bobby.smith@apachecorp.com Date: 9/10/2013 Phone: 432-818-1020	OIL CONSERVATION DIVISION Approved By: Paul Kautz Title: Geologist Approved Date: 10/4/2013 Expiration Date: 10/4/2015 Conditions of Approval Attached
---	---

DISTRICT I
1625 N. French Dr., Hobbs, NM 88240
Phone: (575) 393-6161 Fax: (575) 393-0720
DISTRICT II
811 S. First St., Artesia, NM 88210
Phone: (575) 748-1283 Fax: (575) 748-9720
DISTRICT III
1000 Rio Brazos Road, Aztec, NM 87410
Phone: (505) 334-6178 Fax: (505) 334-6170
DISTRICT IV
1220 S. St. Francis Dr., Santa Fe, NM 87505
Phone: (505) 476-3460 Fax: (505) 476-3462

State of New Mexico
Energy, Minerals & Natural Resources Department
OIL CONSERVATION DIVISION
1220 South St. Francis Dr.
Santa Fe, New Mexico 87505

Form C-102
Revised August 1, 2011
Submit one copy to appropriate
District Office

AMENDED REPORT

WELL LOCATION AND ACREAGE DEDICATION PLAT

API Number 30-025-	Pool Code	Pool Name Wantz (Abo)
Property Code	Property Name SOUTHLAND ROYALTY	Well Number 2H
OGRID No. 873	Operator Name APACHE CORPORATION	Elevation 3465'

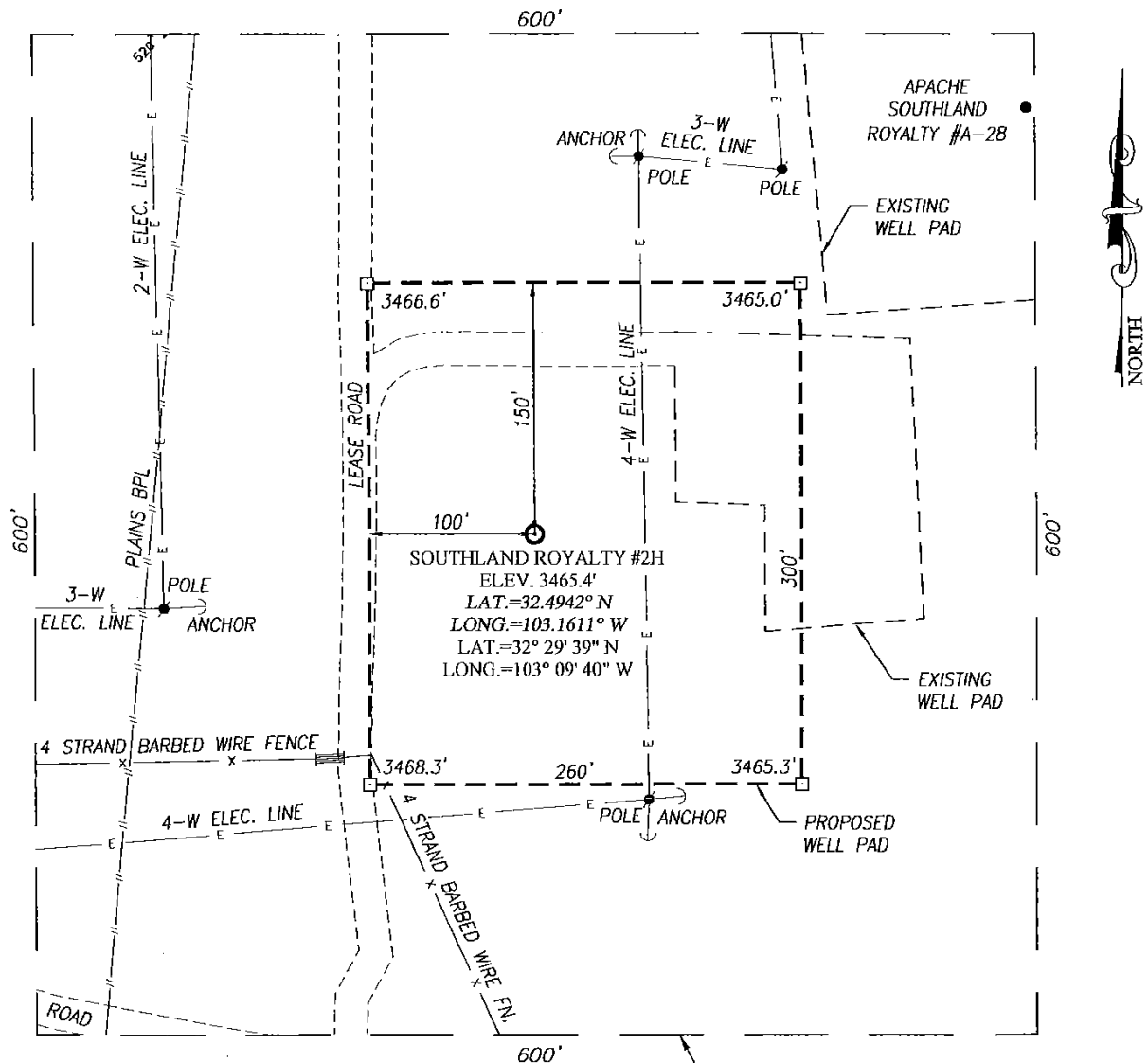
Surface Location									
UL or lot No.	Section	Township	Range	Lot Idn	Feet from the	North/South line	Feet from the	East/West line	County
H	9	21-S	37-E		2310	NORTH	640	EAST	LEA

Bottom Hole Location If Different From Surface									
UL or lot No.	Section	Township	Range	Lot Idn	Feet from the	North/South line	Feet from the	East/West line	County
I	4	21-S	37-E		2310	SOUTH	660	EAST	LEA
Dedicated Acres	Joint or Infill	Consolidation Code	Order No.						

NO ALLOWABLE WILL BE ASSIGNED TO THIS COMPLETION UNTIL ALL INTERESTS HAVE BEEN CONSOLIDATED OR A NON-STANDARD UNIT HAS BEEN APPROVED BY THE DIVISION

<p>CORNER COORDINATES TABLE</p> <p>A - Y=550436.8 N, X=860710.7 E B - Y=550449.5 N, X=862030.5 E C - Y=547809.6 N, X=862060.6 E D - Y=547797.2 N, X=860741.4 E E - Y=545156.1 N, X=860771.5 E F - Y=545169.0 N, X=862091.6 E</p>		<p>SECTION 4 SECTION 9</p>		<p>GEODETIC COORDINATES NAD 27 NME</p> <p>SURFACE LOCATION Y=545494.0 N X=861447.8 E LAT.=32.4942° N LONG.=103.1611° W LAT.=32° 29' 39" N LONG.=103° 09' 40" W</p> <p>BOTTOM HOLE LOCATION Y=550113.0 N X=861374.4 E LAT.=32° 30' 25" N LONG.=103° 09' 40" W</p>		<p>OPERATOR CERTIFICATION</p> <p>I hereby certify that the information herein is true and complete to the best of my knowledge and belief, and that this organization either owns a working interest or unleased mineral interest in the land including the proposed bottom hole location or has a right to drill this well at this location pursuant to a contract with an owner of such mineral or working interest, or to a voluntary pooling agreement or a compulsory pooling order heretofore entered by the division.</p> <p><i>Michelle Cooper</i> 7-30-13 Signature Date <i>Michelle Cooper</i> Printed Name <i>michelle.cooper@apachecorp.com</i> E-mail Address</p>		<p>SURVEYOR CERTIFICATION</p> <p>I hereby certify that the well location shown on this plat was plotted from field notes of actual surveys made by me or under my supervision, and that the same is true and correct to the best of my belief.</p> <p>JUNE 27, 2013 Date of Survey <i>Ronald J. Eidson</i> Signature Professional Surveyor</p> <p>NEW MEXICO REGISTERED 3239 JUNE 27, 2013</p> <p>Certified by Mary G. Eidson 12641 Ronald J. Eidson 3239</p> <p>BKL JWSC W.O.: 13.11.0733</p>	
---	--	--	--	--	--	---	--	--	--

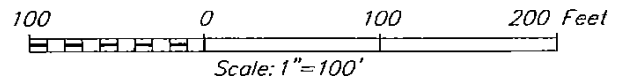
SECTION 9, TOWNSHIP 21 SOUTH, RANGE 37 EAST, N.M.P.M.
LEA COUNTY NEW MEXICO



NOTE:
SEE "LOCATION VERIFICATION MAP"
FOR PROPOSED ROAD LOCATION.

DIRECTIONS TO LOCATION:

FROM THE INTERSECTION OF HILL RD. AND ST. HWY. 207 GO
NORTH APPROX. 0.7 MILES; TURN LEFT AND GO WEST APPROX.
0.1 MILES. TURN RIGHT AND GO NORTH 300 FEET. THE LOCATION
STAKE IS 100 FEET EAST.



APACHE CORPORATION

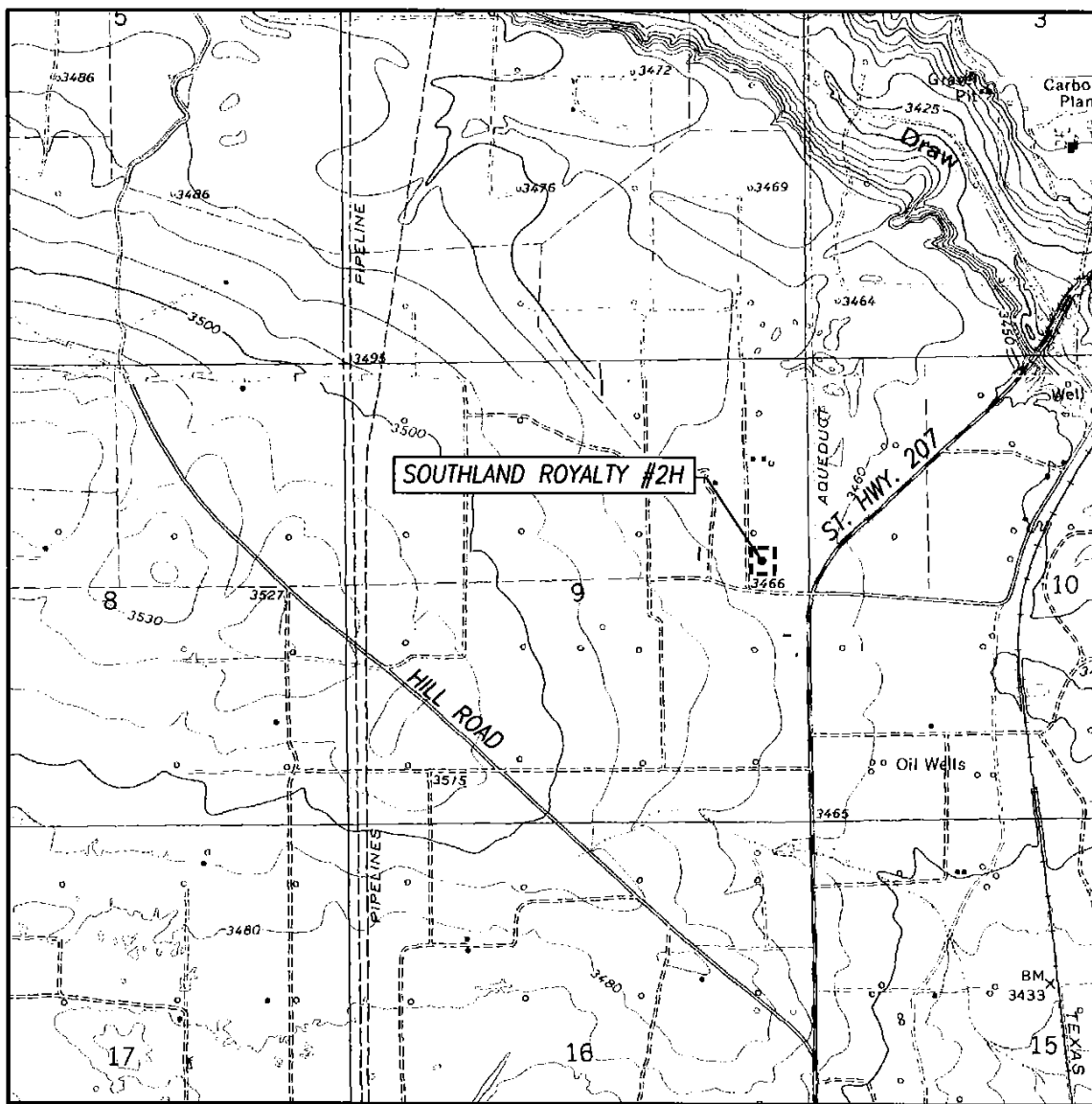
SOUTHLAND ROYALTY #2H WELL
LOCATED 2310 FEET FROM THE NORTH LINE
AND 640 FEET FROM THE EAST LINE OF SECTION 9,
TOWNSHIP 21 SOUTH, RANGE 37 EAST, N.M.P.M.,
LEA COUNTY, NEW MEXICO

Survey Date: 6/26/13	CAD Date: 7/11/13	Drawn By: BKL
W.O. No.: 13110733	Rev. :	Rel. W.O.:

Sheet 1 of 1

PROVIDING SURVEYING SERVICES
SINCE 1946
JOHN WEST SURVEYING COMPANY
412 N. DAL PASO
HOBBS, N.M. 88240
(575) 393-3117 www.jwsc.biz

LOCATION VERIFICATION MAP



SCALE: 1" = 2000'

CONTOUR INTERVAL:
EUNICE, N.M. - 10'
HOBBS S.W., N.M. - 5'

SEC. 9 TWP. 21-S RGE. 37-E

SURVEY N.M.P.M.

COUNTY LEA STATE NEW MEXICO

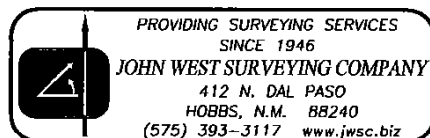
DESCRIPTION 2310' FNL & 640' FEL

ELEVATION 3465'

OPERATOR APACHE CORPORATION

LEASE SOUTHLAND ROYALTY

U.S.G.S. TOPOGRAPHIC MAP
EUNICE, N.M.



District I
1625 N. French Dr., Hobbs, NM 88240
Phone:(575) 393-8181 Fax:(575) 393-0720
District II
811 S. First St., Artesia, NM 88210
Phone:(575) 748-1283 Fax:(575) 748-9720
District III
1000 Rio Brazos Rd., Aztec, NM 87410
Phone:(505) 334-8178 Fax:(505) 334-8170
District IV
1220 S. St Francis Dr., Santa Fe, NM 87505
Phone:(505) 476-3470 Fax:(505) 476-3462

State of New Mexico
Energy, Minerals and Natural Resources
Oil Conservation Division
1220 S. St Francis Dr.
Santa Fe, NM 87505

Form APD Comments

Permit 170863

PERMIT COMMENTS

Operator Name and Address: APACHE CORP [873] 303 Veterans Airpark Lane Midland, TX 79705	API Number: 30-025-41435
	Well: SOUTHLAND ROYALTY A #002H

Created By	Comment	Comment Date
MICHELLEC	Closed Loop System will be used	7/31/2013
pkautz	Land p/P	9/10/2013

District I
 1625 N. French Dr., Hobbs, NM 88240
 Phone:(575) 393-6161 Fax:(575) 393-0720
District II
 811 S. First St., Artesia, NM 88210
 Phone:(575) 748-1283 Fax:(575) 748-9720
District III
 1000 Rio Brazos Rd., Aztec, NM 87410
 Phone:(505) 334-6178 Fax:(505) 334-6170
District IV
 1220 S. St Francis Dr., Santa Fe, NM 87505
 Phone:(505) 476-3470 Fax:(505) 476-3462

State of New Mexico
Energy, Minerals and Natural Resources
Oil Conservation Division
1220 S. St Francis Dr.
Santa Fe, NM 87505

Form APD Conditions

 Permit 170863

PERMIT CONDITIONS OF APPROVAL

Operator Name and Address: APACHE CORP [873] 303 Veterans Airpark Lane Midland, TX 79705		API Number: 30-025-41435
		Well: SOUTHLAND ROYALTY A #002H

OCD Reviewer	Condition
pkautz	Once the well is spud, to prevent ground water contamination through whole or partial conduits from the surface, the operator shall drill without interruption through the fresh water zone or zones and shall immediately set in cement the water protection string
pkautz	Surface casing must be set 25' below top of Rustler Anhydrite in order to seal off protectable water
DMULL	Will require a directional survey with the C-104
DMULL	Pit construction and closure must satisfy all requirements of your approved plan, O.C.D. Rule 19.15.2.50, and the Pit and Below-Grade Tank Guidelines