

**District I**  
1625 N. French Dr., Hobbs, NM 88240  
Phone:(575) 393-8161 Fax:(575) 393-0720

**District II**  
811 S. First St., Artesia, NM 88210  
Phone:(575) 748-1283 Fax:(575) 748-9720

**District III**  
1000 Rio Brazos Rd., Aztec, NM 87410  
Phone:(505) 334-6178 Fax:(505) 334-6170

**District IV**  
1220 S. St Francis Dr., Santa Fe, NM 87505  
Phone:(505) 476-3470 Fax:(505) 476-3462

**State of New Mexico**  
**Energy, Minerals and Natural Resources**  
**Oil Conservation Division**  
**1220 S. St Francis Dr.**  
**Santa Fe, NM 87505**

Form C-101  
August 1, 2011  
Permit 179832

**APPLICATION FOR PERMIT TO DRILL, RE-ENTER, DEEPEN, PLUGBACK, OR ADD A ZONE**

1. Operator Name and Address APACHE CORP 303 Veterans Airpark Lane Midland, TX 79705		2. OGRID Number 873
4. Property Code 308708		3. API Number 30-015-41959
5. Property Name BM STATE		6. Well No. 002

**7. Surface Location**

UL - Lot K	Section 2	Township 18S	Range 27E	Lot Idn	Feet From 2310	N/S Line S	Feet From 1750	E/W Line W	County Eddy
---------------	--------------	-----------------	--------------	---------	-------------------	---------------	-------------------	---------------	----------------

**8. Proposed Bottom Hole Location**

UL - Lot K	Section 2	Township 18S	Range 27E	Lot Idn K	Feet From 2310	N/S Line S	Feet From 1750	E/W Line W	County Eddy
---------------	--------------	-----------------	--------------	--------------	-------------------	---------------	-------------------	---------------	----------------

**9. Pool Information**

RED LAKE; GLORIETA-YESO, NORTHEAST	96836
------------------------------------	-------

**Additional Well Information**

11. Work Type New Well	12. Well Type OIL	13. Cable/Rotary	14. Lease Type State	15. Ground Level Elevation 3544
16. Multiple N	17. Proposed Depth 4000	18. Formation Yeso Formation	19. Contractor	20. Spud Date
Depth to Ground water		Distance from nearest fresh water well		Distance to nearest surface water

☒ We will be using a closed-loop system in lieu of lined pits

**21. Proposed Casing and Cement Program**

Type	Hole Size	Casing Size	Casing Weight/ft	Setting Depth	Sacks of Cement	Estimated TOC
Surf	11	8.625	24	300	200	
Prod	7.875	5.5	17	4000	520	

**Casing/Cement Program: Additional Comments**

--

**22. Proposed Blowout Prevention Program**

Type	Working Pressure	Test Pressure	Manufacturer
Hydril	3000	2000	

23. I hereby certify that the information given above is true and complete to the best of my knowledge and belief. I further certify I have complied with 19.15.14.9 (A) NMAC <input checked="" type="checkbox"/> and/or 19.15.14.9 (B) NMAC <input checked="" type="checkbox"/> , if applicable.  Signature: _____ Printed Name: Electronically filed by Bobby Smith Title: _____ Email Address: bobby.smith@apachecorp.com Date: 1/14/2014	<b>OIL CONSERVATION DIVISION</b>  Approved By: Randy Dade Title: District Supervisor Approved Date: 1/15/2014      Expiration Date: 1/15/2016 Conditions of Approval Attached
Phone: 432-818-1020	

DISTRICT I  
1625 N. French Dr., Hobbs, NM 88240  
Phone: (575) 393-6161 Fax: (575) 393-0720

DISTRICT II  
811 S. First St., Artesia, NM 88210  
Phone: (575) 748-1283 Fax: (575) 748-9720

DISTRICT III  
1060 Rio Brazos Road, Aztec, NM 87410  
Phone: (505) 334-6178 Fax: (505) 334-6170

DISTRICT IV  
1220 S. St. Francis Dr., Santa Fe, NM 87505  
Phone: (505) 476-3460 Fax: (505) 476-3462

State of New Mexico  
Energy, Minerals & Natural Resources Department  
OIL CONSERVATION DIVISION  
1220 South St. Francis Dr.  
Santa Fe, New Mexico 87505

Form C-102  
Revised August 1, 2011  
Submit one copy to appropriate  
District Office

DAMENDED REPORT

WELL LOCATION AND ACREAGE DEDICATION PLAT

API Number <b>30-015-</b>	Pool Code <b>96830</b>	Pool Name <b>Artesia; Glorieta - Yeso</b>
Property Code	Property Name <b>BM STATE</b>	Well Number <b>2</b>
OGRID No. <b>873</b>	Operator Name <b>APACHE CORPORATION</b>	Elevation <b>3544'</b>

Surface Location

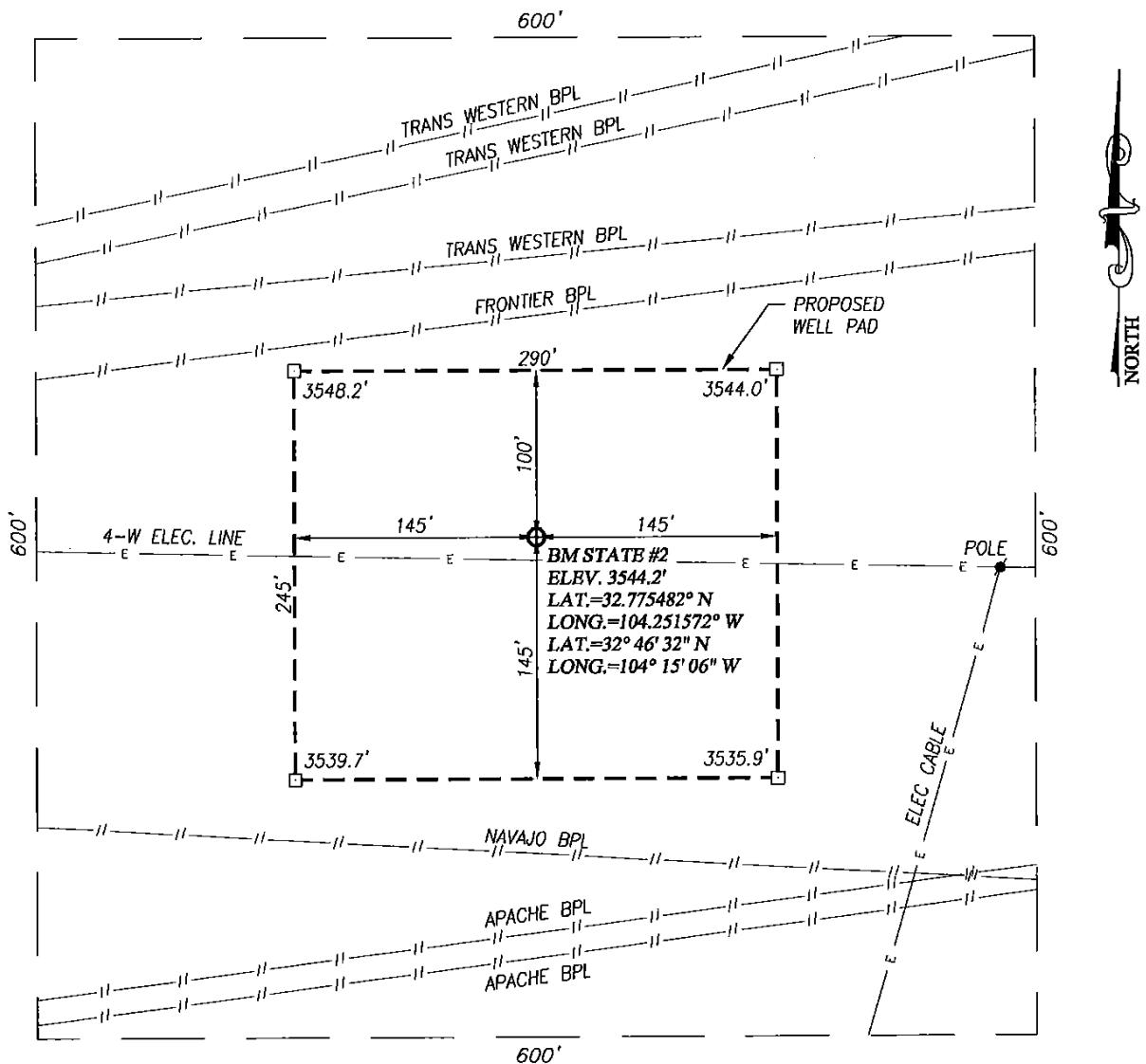
U.I. or lot No.	Section	Township	Range	Lot Idn	Feet from the	North/South line	Feet from the	East/West line	County
<b>K</b>	<b>2</b>	<b>18-S</b>	<b>27-E</b>		<b>2310</b>	<b>SOUTH</b>	<b>1750</b>	<b>WEST</b>	<b>EDDY</b>

Bottom Hole Location If Different From Surface

U.I. or lot No.	Section	Township	Range	Lot Idn	Feet from the	North/South line	Feet from the	East/West line	County
Dedicated Acres <b>40</b>	Joint or Infill	Consolidation Code	Order No.						

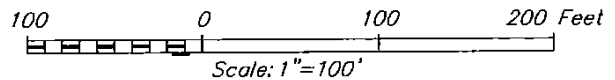
NO ALLOWABLE WILL BE ASSIGNED TO THIS COMPLETION UNTIL ALL INTERESTS HAVE BEEN CONSOLIDATED OR A NON-STANDARD UNIT HAS BEEN APPROVED BY THE DIVISION

<p>LOT 4      LOT 3      LOT 2      LOT 1</p> <p>GEODETIC COORDINATES NAD 27 NME</p> <p>SURFACE LOCATION Y=645840.9 N X=525130.0 E</p> <p>LAT.=32.775482° N LONG.=104.251572° W</p> <p>LAT.=32° 46' 32" N LONG.=104° 15' 06" W</p>	<p><b>OPERATOR CERTIFICATION</b></p> <p>I hereby certify that the information herein is true and complete to the best of my knowledge and belief, and that this organization either owns a working interest or unleased mineral interest in the land including the proposed bottom hole location or has a right to drill this well at this location pursuant to a contract with an owner of such mineral or working interest, or to a voluntary pooling agreement or a compulsory pooling order heretofore entered by the division.</p> <p><i>Michelle Cooper</i> 1-14-14 Signature Date</p> <p><i>Michelle Cooper</i> Printed Name</p> <p><i>michelle.cooper@apachecorp.com</i> E-mail Address</p> <p><b>SURVEYOR CERTIFICATION</b></p> <p>I hereby certify that the well location shown on this plat was plotted from field notes of actual surveys made by me or under my supervision, and that the same is true and correct to the best of my belief.</p> <p>DECEMBER 17, 2013</p> <p>Date of Survey</p> <p>Signature &amp; Seal of Professional Surveyor: <i>DARY G. EIDSON</i></p> <p>12641</p> <p>Certificate Number <i>DARY G. EIDSON</i> 12641 <i>DARY G. EIDSON</i> 3239</p> <p>BKL. JWSC W.O. 13.11.1368</p>
--	---



#### DIRECTIONS TO LOCATION

FROM THE INTERSECTION OF US. HIGHWAY 82 AND CO. RD. 204 (HILLTOP) GO SOUTH APPROX. 0.25 MILES TO THE INTERSECTION OF CO. RD. 225 (EMPIRE) AND CO. RD. 204 (HILL TOP); VEER RIGHT AND GO SOUTH-SOUTHWEST ALONG EMPIRE ROAD APPROX. 2.2 MILES; TURN LEFT AND GO SOUTH ON A LEASE ROAD APPROX. 0.45 MILES; TURN LEFT AND GO EAST APPROX. 0.2 MILES TO THE APACHE WELL PAD (EMPIRE ABO UNIT K-14). THIS STAKED LOCATION IS APPROX. 450 FEET NORTH.



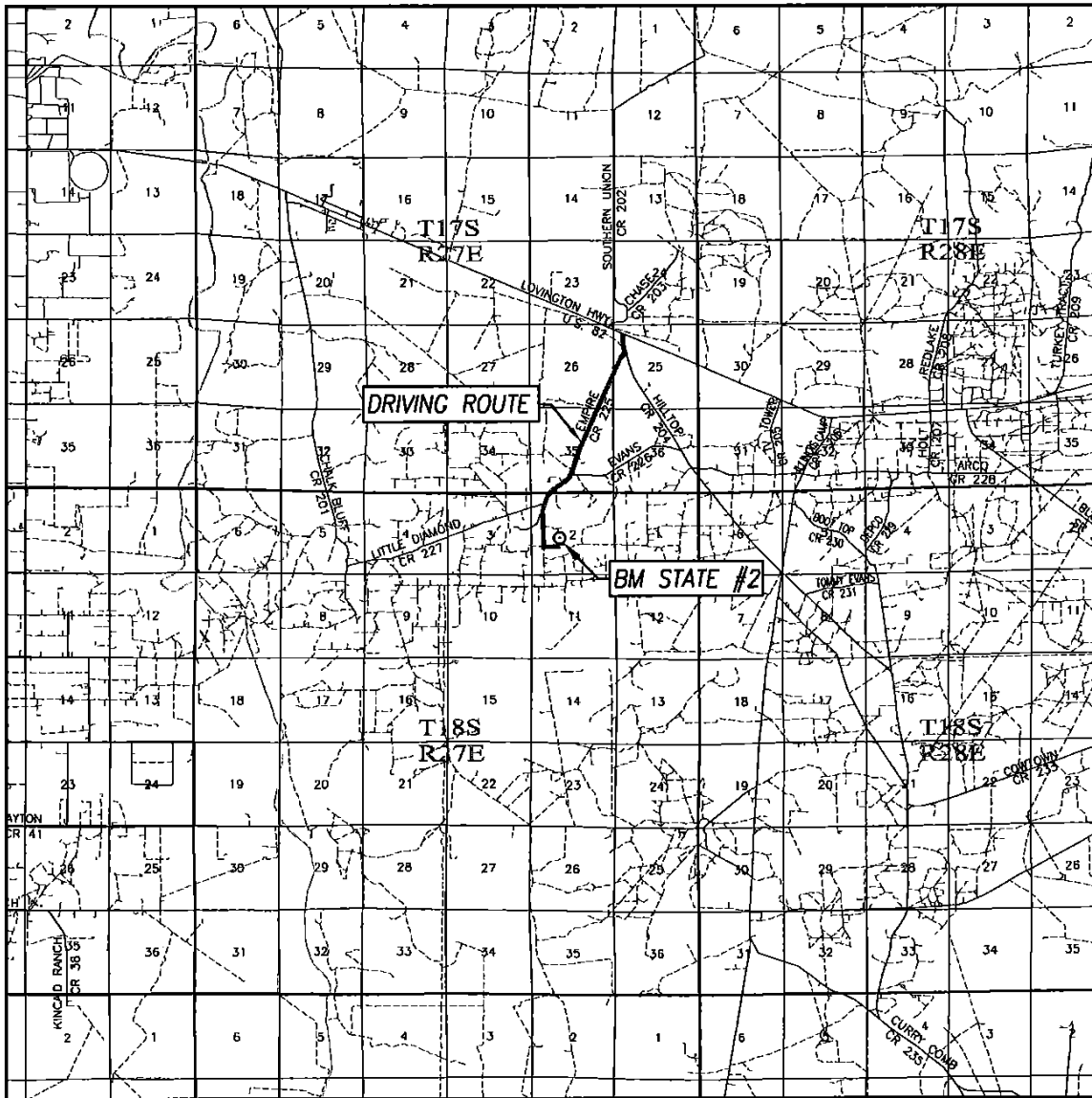
## APACHE CORPORATION

**BM STATE #2 WELL**  
**LOCATED 2310 FEET FROM THE SOUTH LINE**  
**AND 1750 FEET FROM THE WEST LINE OF SECTION 2,**  
**TOWNSHIP 18 SOUTH, RANGE 27 EAST, N.M.P.M.,**  
**EDDY COUNTY, NEW MEXICO**

Survey Date: 12/17/13	CAD Date: 12/27/13	Drawn By: BKL
W.O. No.: 13111368	Rev: .	Rel. W.O.: Sheet 1 of 1

PROVIDING SURVEYING SERVICES  
SINCE 1946  
**JOHN WEST SURVEYING COMPANY**  
412 N. DAL PASO  
HOBBS, N.M. 88240  
(575) 393-3117 www.jwsc.biz


# VICINITY MAP



SCALE: 1" = 2 MILES

DRIVING ROUTE: SEE LOCATION VERIFICATION MAP

SEC. 2 TWP. 18-S RGE. 27-E  
 SURVEY N.M.P.M.  
 COUNTY EDDY STATE NEW MEXICO  
 DESCRIPTION 2310' FSL & 1750' FWL  
 ELEVATION 3544'  
 OPERATOR APACHE CORPORATION  
 LEASE BM STATE



PROVIDING SURVEYING SERVICES  
 SINCE 1946  
**JOHN WEST SURVEYING COMPANY**  
 412 N. DAL PASO  
 HOBBS, N.M. 88240  
 (575) 393-3117 [www.jwsc.biz](http://www.jwsc.biz)

**District I**  
1625 N. French Dr., Hobbs, NM 88240  
Phone:(575) 393-8181 Fax:(575) 393-0720  
**District II**  
811 S. First St., Artesia, NM 88210  
Phone:(575) 748-1283 Fax:(575) 748-9720  
**District III**  
1000 Rio Brazos Rd., Aztec, NM 87410  
Phone:(505) 334-8178 Fax:(505) 334-8170  
**District IV**  
1220 S. St Francis Dr., Santa Fe, NM 87505  
Phone:(505) 476-3470 Fax:(505) 476-3462

**State of New Mexico**  
**Energy, Minerals and Natural Resources**  
**Oil Conservation Division**  
**1220 S. St Francis Dr.**  
**Santa Fe, NM 87505**

Form APD Comments  
Permit 179832

**PERMIT COMMENTS**

Operator Name and Address: APACHE CORP [873] 303 Veterans Airpark Lane Midland, TX 79705		API Number: 30-015-41959
		Well: BM STATE #002
Created By	Comment	Comment Date
CSHAPARD	Land s/S	1/15/2014
CSHAPARD	Please provide updated Land Plat including pool change.	1/15/2014

**District I**  
1625 N. French Dr., Hobbs, NM 88240  
Phone:(575) 393-8181 Fax:(575) 393-0720  
**District II**  
811 S. First St., Artesia, NM 88210  
Phone:(575) 748-1283 Fax:(575) 748-9720  
**District III**  
1000 Rio Brazos Rd., Aztec, NM 87410  
Phone:(505) 334-8178 Fax:(505) 334-8170  
**District IV**  
1220 S. St Francis Dr., Santa Fe, NM 87505  
Phone:(505) 476-3470 Fax:(505) 476-3462

**State of New Mexico**  
**Energy, Minerals and Natural Resources**  
**Oil Conservation Division**  
**1220 S. St Francis Dr.**  
**Santa Fe, NM 87505**

Form APD Conditions  
Permit 179832

**PERMIT CONDITIONS OF APPROVAL**

Operator Name and Address: APACHE CORP [873] 303 Veterans Airpark Lane Midland, TX 79705		API Number: 30-015-41959
		Well: BM STATE #002
OCD Reviewer	Condition	
CSHAPARD	Once the well is spud, to prevent ground water contamination through whole or partial conduits from the surface, the operator shall drill without interruption through the fresh water zone or zones and shall immediately set in cement the water protection string	