

**District I**  
1625 N. French Dr., Hobbs, NM 88240  
Phone:(575) 393-8161 Fax:(575) 393-0720

**District II**  
811 S. First St., Artesia, NM 88210  
Phone:(575) 748-1283 Fax:(575) 748-9720

**District III**  
1000 Rio Brazos Rd., Aztec, NM 87410  
Phone:(505) 334-6178 Fax:(505) 334-6170

**District IV**  
1220 S. St Francis Dr., Santa Fe, NM 87505  
Phone:(505) 476-3470 Fax:(505) 476-3462

**State of New Mexico**  
**Energy, Minerals and Natural Resources**  
**Oil Conservation Division**  
**1220 S. St Francis Dr.**  
**Santa Fe, NM 87505**

Form C-101  
August 1, 2011  
Permit 182440

**APPLICATION FOR PERMIT TO DRILL, RE-ENTER, DEEPEN, PLUGBACK, OR ADD A ZONE**

1. Operator Name and Address APACHE CORP 303 Veterans Airpark Lane Midland, TX 79705		2. OGRID Number 873
4. Property Code 302708		3. API Number 30-025-41705
5. Property Name NORTH MONUMENT G/SA UNIT		6. Well No. 434

**7. Surface Location**

UL - Lot <b>B</b>	Section <b>30</b>	Township <b>19S</b>	Range <b>37E</b>	Lot Idn	Feet From <b>1310</b>	N/S Line <b>N</b>	Feet From <b>1310</b>	E/W Line <b>E</b>	County <b>Lea</b>
----------------------	----------------------	------------------------	---------------------	---------	--------------------------	----------------------	--------------------------	----------------------	----------------------

**8. Proposed Bottom Hole Location**

UL - Lot <b>B</b>	Section <b>30</b>	Township <b>19S</b>	Range <b>37E</b>	Lot Idn <b>B</b>	Feet From <b>1310</b>	N/S Line <b>N</b>	Feet From <b>1310</b>	E/W Line <b>E</b>	County <b>Lea</b>
----------------------	----------------------	------------------------	---------------------	---------------------	--------------------------	----------------------	--------------------------	----------------------	----------------------

**9. Pool Information**

EUNICE MONUMENT;GRAYBURG-SAN ANDRES	23000
-------------------------------------	-------

**Additional Well Information**

11. Work Type <b>New Well</b>	12. Well Type <b>OIL</b>	13. Cable/Rotary	14. Lease Type <b>State</b>	15. Ground Level Elevation <b>3612</b>
16. Multiple <b>N</b>	17. Proposed Depth <b>4200</b>	18. Formation <b>Grayburg</b>	19. Contractor	20. Spud Date
Depth to Ground water		Distance from nearest fresh water well		Distance to nearest surface water

☒ We will be using a closed-loop system in lieu of lined pits

**21. Proposed Casing and Cement Program**

Type	Hole Size	Casing Size	Casing Weight/ft	Setting Depth	Sacks of Cement	Estimated TOC
Surf	11	8.625	24	1300	450	
Prod	7.875	5.5	17	4000	650	

**Casing/Cement Program: Additional Comments**

--

**22. Proposed Blowout Prevention Program**

Type	Working Pressure	Test Pressure	Manufacturer
Hydril	3000	2000	

23. I hereby certify that the information given above is true and complete to the best of my knowledge and belief. I further certify I have complied with 19.15.14.9 (A) NMAC <input checked="" type="checkbox"/> and/or 19.15.14.9 (B) NMAC <input checked="" type="checkbox"/> , if applicable.  Signature: _____ Printed Name: <b>Electronically filed by Bobby Smith</b> Title: _____ Email Address: <b>bobby.smith@apachecorp.com</b> Date: <b>3/4/2014</b>	<div style="text-align: center;"><b>OIL CONSERVATION DIVISION</b></div>  Approved By: <b>Paul Kautz</b> Title: <b>Geologist</b> Approved Date: <b>3/4/2014</b> Expiration Date: <b>3/4/2016</b> Conditions of Approval Attached
Phone: 432-818-1020	

District I  
1625 N. French Dr., Hobbs, NM 88240  
Phone: (575) 393-6161 Fax: (575) 393-0720  
District II  
811 S. First St., Artesia, NM 88210  
Phone: (575) 748-1283 Fax: (575) 748-9720  
District III  
1000 Rio Brazos Road, Aztec, NM 87410  
Phone: (505) 334-6178 Fax: (505) 334-6170  
District IV  
1220 S. St. Francis Dr., Santa Fe, NM 87505  
Phone: (505) 476-3460 Fax: (505) 476-3462

State of New Mexico  
Energy, Minerals & Natural Resources Department  
OIL CONSERVATION DIVISION  
1220 South St. Francis Dr.  
Santa Fe, NM 87505

Form C-102  
Revised August 1, 2011  
Submit one copy to appropriate  
District Office

☐ AMENDED REPORT

WELL LOCATION AND ACREAGE DEDICATION PLAT

<sup>1</sup> API Number <b>30-025</b>	<sup>2</sup> Pool Code <b>23000</b>	<sup>3</sup> Pool Name <b>Eunice Monument; Grayburg-San Andres</b>
<sup>4</sup> Property Code	<sup>5</sup> Property Name <b>NORTH MONUMENT G/SA UNIT</b>	<sup>6</sup> Well Number <b>#434</b>
<sup>7</sup> OGRID No. <b>873</b>	<sup>8</sup> Operator Name <b>APACHE CORPORATION</b>	<sup>9</sup> Elevation <b>3611.86</b>

<sup>10</sup> Surface Location

UL or lot no.	Section	Township	Range	Lot Idn	Feet from the	North/South line	Feet from the	East/West line	County
<b>2</b>	<b>30</b>	<b>19 S</b>	<b>37 E</b>		<b>1,310</b>	<b>NORTH</b>	<b>1,310</b>	<b>EAST</b>	<b>LEA</b>

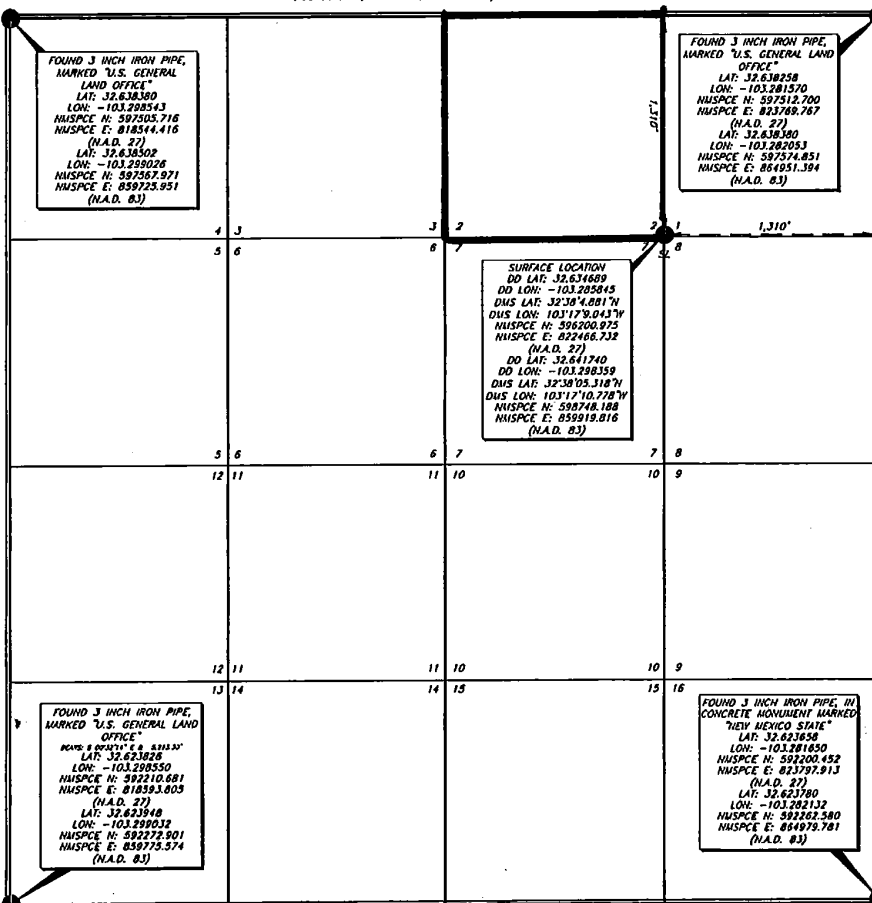
<sup>11</sup> Bottom Hole Location If Different From Surface

UL or lot no.	Section	Township	Range	Lot Idn	Feet from the	North/South line	Feet from the	East/West line	County

<sup>12</sup> Dedicated Acres <b>40</b>	<sup>13</sup> Joint or Infill	<sup>14</sup> Consolidation Code	<sup>15</sup> Order No.
--	-------------------------------	----------------------------------	-------------------------

No allowable will be assigned to this completion until all interests have been consolidated or a non-standard unit has been approved by the division.

SECTION 30, TOWNSHIP 19 SOUTH, RANGE 37 EAST P.M.



<b><sup>16</sup> OPERATOR CERTIFICATION</b>	
I hereby certify that the information contained herein is true and complete to the best of my knowledge and belief, and that this organization either owns a working interest or leased mineral interest in the land including the proposed bottom hole location or has a right to drill this well at this location pursuant to a contract with an owner of such a mineral or working interest, or to a voluntary pooling agreement or a compulsory pooling order heretofore entered by the division.	
<i>Michelle Cooper</i> Signature	<b>2-28-14</b> Date
<i>Michelle Cooper</i> Printed Name	
<i>michelle.cooper@apachecorp.com</i> E-mail Address	
<b><sup>17</sup> SURVEYOR CERTIFICATION</b>	
I hereby certify that the well location shown on this plat was plotted from field notes of actual surveys made by me or under my supervision, and that the same is true and correct to the best of my belief.	
<b>18 Feb 2014</b> Date of Survey	
<i>[Signature]</i> Signature and Seal of Professional Surveyor	
<b>20559</b> Certificate Number	

**District I**  
1625 N. French Dr., Hobbs, NM 88240  
Phone:(575) 393-8181 Fax:(575) 393-0720  
**District II**  
811 S. First St., Artesia, NM 88210  
Phone:(575) 748-1283 Fax:(575) 748-9720  
**District III**  
1000 Rio Brazos Rd., Aztec, NM 87410  
Phone:(505) 334-8178 Fax:(505) 334-8170  
**District IV**  
1220 S. St Francis Dr., Santa Fe, NM 87505  
Phone:(505) 476-3470 Fax:(505) 476-3462

**State of New Mexico**  
**Energy, Minerals and Natural Resources**  
**Oil Conservation Division**  
**1220 S. St Francis Dr.**  
**Santa Fe, NM 87505**

Form APD Comments  
  
Permit 182440

**PERMIT COMMENTS**

Operator Name and Address: APACHE CORP [873] 303 Veterans Airpark Lane Midland, TX 79705		API Number: 30-025-41705
		Well: NORTH MONUMENT G/SA UNIT #434

Created By	Comment	Comment Date
------------	---------	--------------

**District I**  
 1625 N. French Dr., Hobbs, NM 88240  
 Phone:(575) 393-6161 Fax:(575) 393-0720  
**District II**  
 811 S. First St., Artesia, NM 88210  
 Phone:(575) 748-1283 Fax:(575) 748-9720  
**District III**  
 1000 Rio Brazos Rd., Aztec, NM 87410  
 Phone:(505) 334-6178 Fax:(505) 334-6170  
**District IV**  
 1220 S. St Francis Dr., Santa Fe, NM 87505  
 Phone:(505) 476-3470 Fax:(505) 476-3462

**State of New Mexico**  
**Energy, Minerals and Natural Resources**  
**Oil Conservation Division**  
**1220 S. St Francis Dr.**  
**Santa Fe, NM 87505**

Form APD Conditions

Permit 182440

**PERMIT CONDITIONS OF APPROVAL**

Operator Name and Address: APACHE CORP [873] 303 Veterans Airpark Lane Midland, TX 79705	API Number: 30-025-41705
	Well: NORTH MONUMENT G/SA UNIT #434

OCD Reviewer	Condition
DMULL	Pit construction and closure must satisfy all requirements of your approved plan, O.C.D. Rule 19.15.2.50, and the Pit and Below-Grade Tank Guidelines
DMULL	Once the well is spud, to prevent ground water contamination through whole or partial conduits from the surface, the operator shall drill without interruption through the fresh water zone or zones and shall immediately set in cement the water protection string
pkautz	1) SURFACE & INTERMEDIATE CASING - Cement must circulate to surface -- 2) PRODUCTION CASING - Cement must tie back into intermediate casing --
pkautz	Surface casing must be set 25' below top of Rustler Anhydrite in order to seal off protectable water