

District I
1625 N. French Dr., Hobbs, NM 88240
Phone:(575) 393-8181 Fax:(575) 393-0720
District II
811 S. First St., Artesia, NM 88210
Phone:(575) 748-1283 Fax:(575) 748-9720
District III
1000 Rio Brazos Rd., Aztec, NM 87410
Phone:(505) 334-6178 Fax:(505) 334-6170
District IV
1220 S. St Francis Dr., Santa Fe, NM 87505
Phone:(505) 476-3470 Fax:(505) 476-3462

State of New Mexico
Energy, Minerals and Natural Resources
Oil Conservation Division
1220 S. St Francis Dr.
Santa Fe, NM 87505

Form C-101
August 1, 2011
Permit 188647

APPLICATION FOR PERMIT TO DRILL, RE-ENTER, DEEPEN, PLUGBACK, OR ADD A ZONE

1. Operator Name and Address APACHE CORP 303 Veterans Airpark Lane Midland, TX 79705		2. OGRID Number 873
4. Property Code 39779		3. API Number 30-025-41867
5. Property Name PINOT		6. Well No. 005

7. Surface Location

UL - Lot	Section	Township	Range	Lot Idn	Feet From	N/S Line	Feet From	E/W Line	County
E	2	20S	38E		2310	N	330	W	Lea

8. Proposed Bottom Hole Location

UL - Lot	Section	Township	Range	Lot Idn	Feet From	N/S Line	Feet From	E/W Line	County
E	2	20S	38E	E	2310	N	330	W	Lea

9. Pool Information

HOUSE;BLINEBRY	33230
HOUSE;TUBB	78760
HOUSE;DRINKARD	33250
HOUSE;ABO	33210

Additional Well Information

11. Work Type New Well	12. Well Type OIL	13. Cable/Rotary	14. Lease Type Private	15. Ground Level Elevation 3574
16. Multiple Y	17. Proposed Depth 8000	18. Formation Abo	19. Contractor	20. Spud Date
Depth to Ground water		Distance from nearest fresh water well		Distance to nearest surface water

☒ We will be using a closed-loop system in lieu of lined pits

21. Proposed Casing and Cement Program

Type	Hole Size	Casing Size	Casing Weight/ft	Setting Depth	Sacks of Cement	Estimated TOC
Surf	11	8.625	24	1620	535	0
Prod	7.875	5.5	17	8000	1050	0

Casing/Cement Program: Additional Comments

--

22. Proposed Blowout Prevention Program

Type	Working Pressure	Test Pressure	Manufacturer
Hydril	3000	2000	

23. I hereby certify that the information given above is true and complete to the best of my knowledge and belief. I further certify I have complied with 19.15.14.9 (A) NMAC <input checked="" type="checkbox"/> and/or 19.15.14.9 (B) NMAC <input checked="" type="checkbox"/> , if applicable. Signature:	OIL CONSERVATION DIVISION
Printed Name: Electronically filed by Bobby Smith	Approved By: Paul Kautz
Title:	Title: Geologist
Email Address: bobby.smith@apachecorp.com	Approved Date: 5/28/2014 Expiration Date: 5/28/2016
Date: 5/22/2014 Phone: 432-818-1020	Conditions of Approval Attached

DISTRICT I
1625 N. French Dr., Hobbs, NM 88240
Phone: (575) 393-6161 Fax: (575) 393-0720

DISTRICT II
811 S. First St., Artesia, NM 88210
Phone: (575) 748-1283 Fax: (575) 748-9720

DISTRICT III
1000 Rio Brazos Road, Aztec, NM 87410
Phone: (505) 334-6178 Fax: (505) 334-6170

DISTRICT IV
1220 S. St. Francis Dr., Santa Fe, NM 87505
Phone: (505) 476-3460 Fax: (505) 476-3462

State of New Mexico
Energy, Minerals & Natural Resources Department
OIL CONSERVATION DIVISION
1220 South St. Francis Dr.
Santa Fe, New Mexico 87505

Form C-102
Revised August 1, 2011
Submit one copy to appropriate
District Office

☐ AMENDED REPORT

WELL LOCATION AND ACREAGE DEDICATION PLAT

API Number 30-025-	Pool Code 33280	House; Blinebry	House; Tubb	Pool Name House; Drinkard	House; ABO
Property Code 39779	Property Name PINOT				Well Number 5
OGRID No. 873	Operator Name APACHE CORPORATION				Elevation 3574'

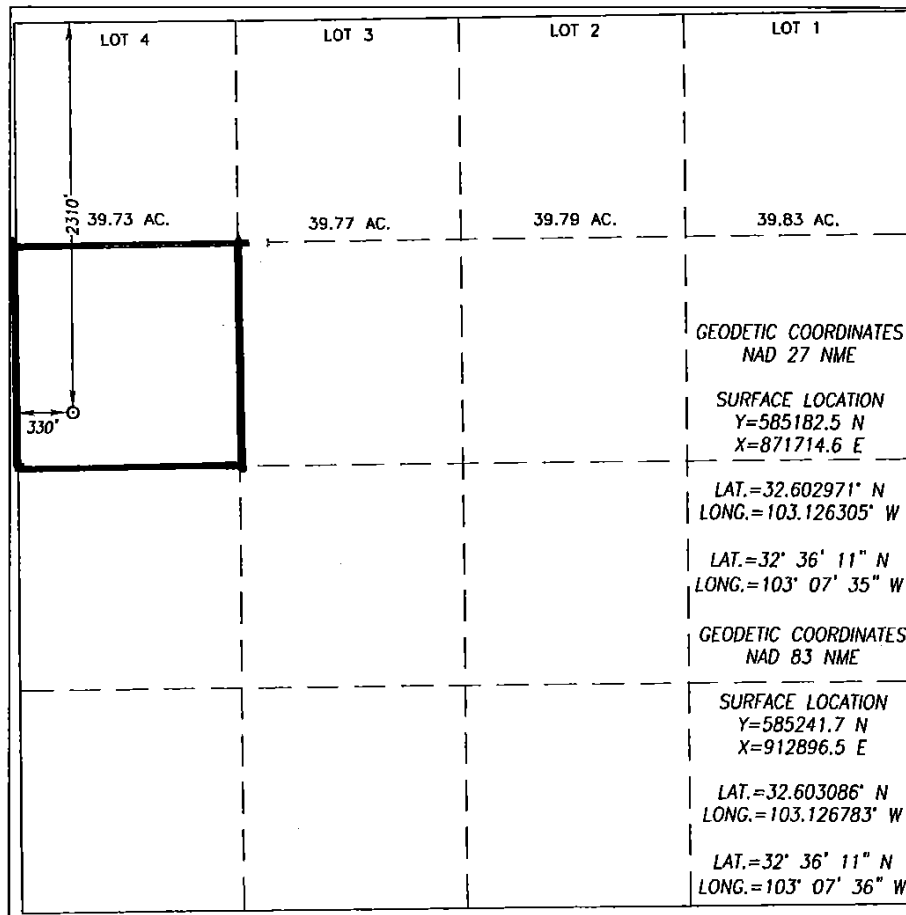
Surface Location

UL or lot No.	Section	Township	Range	Lot Idn	Feet from the	North/South line	Feet from the	East/West line	County
E	2	20-S	38-E		2310	NORTH	330	WEST	LEA

Bottom Hole Location If Different From Surface

UL or lot No.	Section	Township	Range	Lot Idn	Feet from the	North/South line	Feet from the	East/West line	County
Dedicated Acres 40		Joint or Infill		Consolidation Code		Order No.			

NO ALLOWABLE WILL BE ASSIGNED TO THIS COMPLETION UNTIL ALL INTERESTS HAVE BEEN CONSOLIDATED OR A NON-STANDARD UNIT HAS BEEN APPROVED BY THE DIVISION



OPERATOR CERTIFICATION

I hereby certify that the information herein is true and complete to the best of my knowledge and belief, and that this organization either owns a working interest or unleased mineral interest in the land including the proposed bottom hole location or has a right to drill this well at this location pursuant to a contract with an owner of such mineral or working interest, or to a voluntary pooling agreement or a compulsory pooling order heretofore entered by the division.

Michelle Cooper 5-22-14
Signature Date

Michelle Cooper
Printed Name

michelle.cooper@apachecorp.com
E-mail Address

SURVEYOR CERTIFICATION

I hereby certify that the well location shown on this plat was plotted from field notes of actual surveys made by me or under my supervision, and that the same is true and correct to the best of my belief.

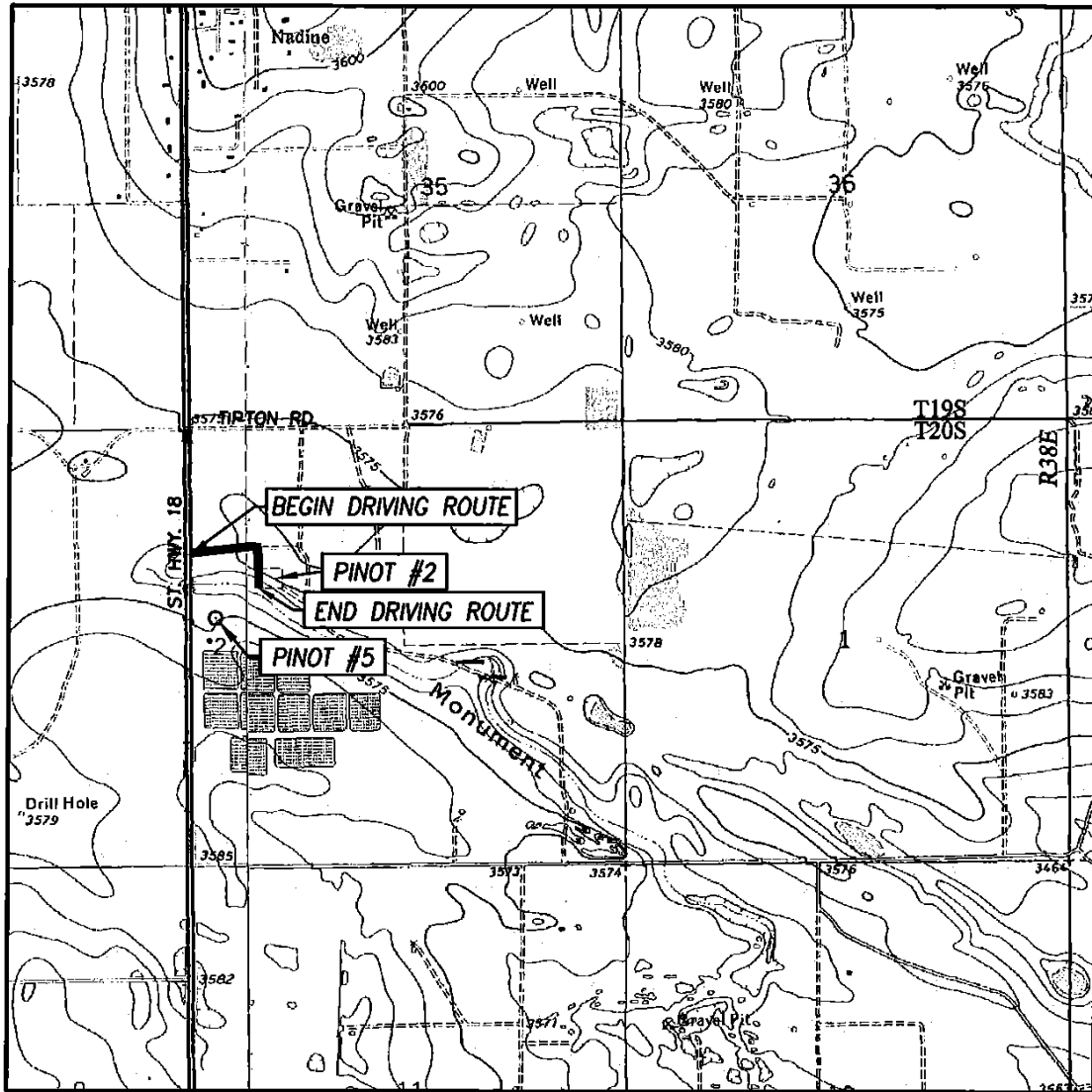
APRIL 30, 2014

Date of Survey
Signature & Seal of Professional Surveyor:

Ronald J. Eidson
Professional Surveyor
3239
Certificate Number 12641
Professional Surveyor J. Eidson 3239

ACK JWSC W.O.: 14.11.0395

LOCATION VERIFICATION MAP



SCALE: 1" = 2000'

CONTOUR INTERVAL:
HOBBS SE, N.M. - 10'
HOBBS SW, N.M. - 10'

SEC. 2 TWP. 20-S RGE. 38-E

SURVEY N.M.P.M.

COUNTY LEA STATE NEW MEXICO

DESCRIPTION 2310' FNL & 330' FWL

ELEVATION 3574'


OPERATOR APACHE CORPORATION

LEASE PINOT

U.S.G.S. TOPOGRAPHIC MAP
HOBBS SE, N.M.

DIRECTIONS TO PINOT #5:

FROM THE INTERSECTION OF ST. HIGHWAY 18 AND TIPTON ROAD, GO EAST ON TIPTON ROAD FOR APPROX. 0.3 MILES. TURN RIGHT AND GO SOUTH AT LEASE ROAD APPROX. 0.1 MILE TO EXISTING BATTERY TANK. THE LOCATION IS SOUTH APPROX. 740 FEET.



PROVIDING SURVEYING SERVICES
SINCE 1946
JOHN WEST SURVEYING COMPANY
412 N. DAL PASO HOBBS, N.M. 88240
(575) 393-3117 www.jwsc.biz
TBPLS# 10021000

DISTRICT I
1625 N. French Dr., Hobbs, NM 88240
Phone: (575) 393-6161 Fax: (575) 393-0720

DISTRICT II
811 S. First St., Artesia, NM 88210
Phone: (575) 748-1283 Fax: (575) 748-9720

DISTRICT III
1000 Rio Brazos Road, Aztec, NM 87410
Phone: (505) 334-6178 Fax: (505) 334-6170

DISTRICT IV
1220 S. St. Francis Dr., Santa Fe, NM 87505
Phone: (505) 476-3460 Fax: (505) 476-3462

State of New Mexico
Energy, Minerals & Natural Resources Department
OIL CONSERVATION DIVISION
1220 South St. Francis Dr.
Santa Fe, New Mexico 87505

Form C-102
Revised August 1, 2011
Submit one copy to appropriate
District Office

☐ AMENDED REPORT

WELL LOCATION AND ACREAGE DEDICATION PLAT

API Number 30-025-	Pool Code 33280	House; Blinebry	House; Tubb
Property Code 39779	Property Name PINOT		Well Number 5
OGRID No. 873	Operator Name APACHE CORPORATION		Elevation 3574'

Surface Location

UL or lot No.	Section	Township	Range	Lot Idn	Feet from the	North/South line	Feet from the	East/West line	County
E	2	20-S	38-E		2310	NORTH	330	WEST	LEA

Bottom Hole Location If Different From Surface

UL or lot No.	Section	Township	Range	Lot Idn	Feet from the	North/South line	Feet from the	East/West line	County
Dedicated Acres 40		Joint or Infill		Consolidation Code		Order No.			

NO ALLOWABLE WILL BE ASSIGNED TO THIS COMPLETION UNTIL ALL INTERESTS HAVE BEEN CONSOLIDATED OR A NON-STANDARD UNIT HAS BEEN APPROVED BY THE DIVISION

LOT 4	LOT 3	LOT 2	LOT 1
39.73 AC.	39.77 AC.	39.79 AC.	39.83 AC.
<p>GEODETIC COORDINATES NAD 27 NME</p> <p>SURFACE LOCATION Y=585182.5 N X=871714.6 E</p> <p>LAT.=32.602971° N LONG.=103.126305° W</p> <p>LAT.=32° 36' 11" N LONG.=103° 07' 35" W</p> <p>GEODETIC COORDINATES NAD 83 NME</p> <p>SURFACE LOCATION Y=585241.7 N X=912896.5 E</p> <p>LAT.=32.603086° N LONG.=103.126783° W</p> <p>LAT.=32° 36' 11" N LONG.=103° 07' 36" W</p>			

OPERATOR CERTIFICATION

I hereby certify that the information herein is true and complete to the best of my knowledge and belief, and that this organization either owns a working interest or unleased mineral interest in the land including the proposed bottom hole location or has a right to drill this well at this location pursuant to a contract with an owner of such mineral or working interest, or to a voluntary pooling agreement or a compulsory pooling order heretofore entered by the division.

Michelle Cooper 5-22-14
 Signature Date
 Michelle Cooper
 Printed Name
 michelle.cooper@apachecorp.com
 E-mail Address

SURVEYOR CERTIFICATION

I hereby certify that the well location shown on this plat was plotted from field notes of actual surveys made by me or under my supervision, and that the same is true and correct to the best of my belief.

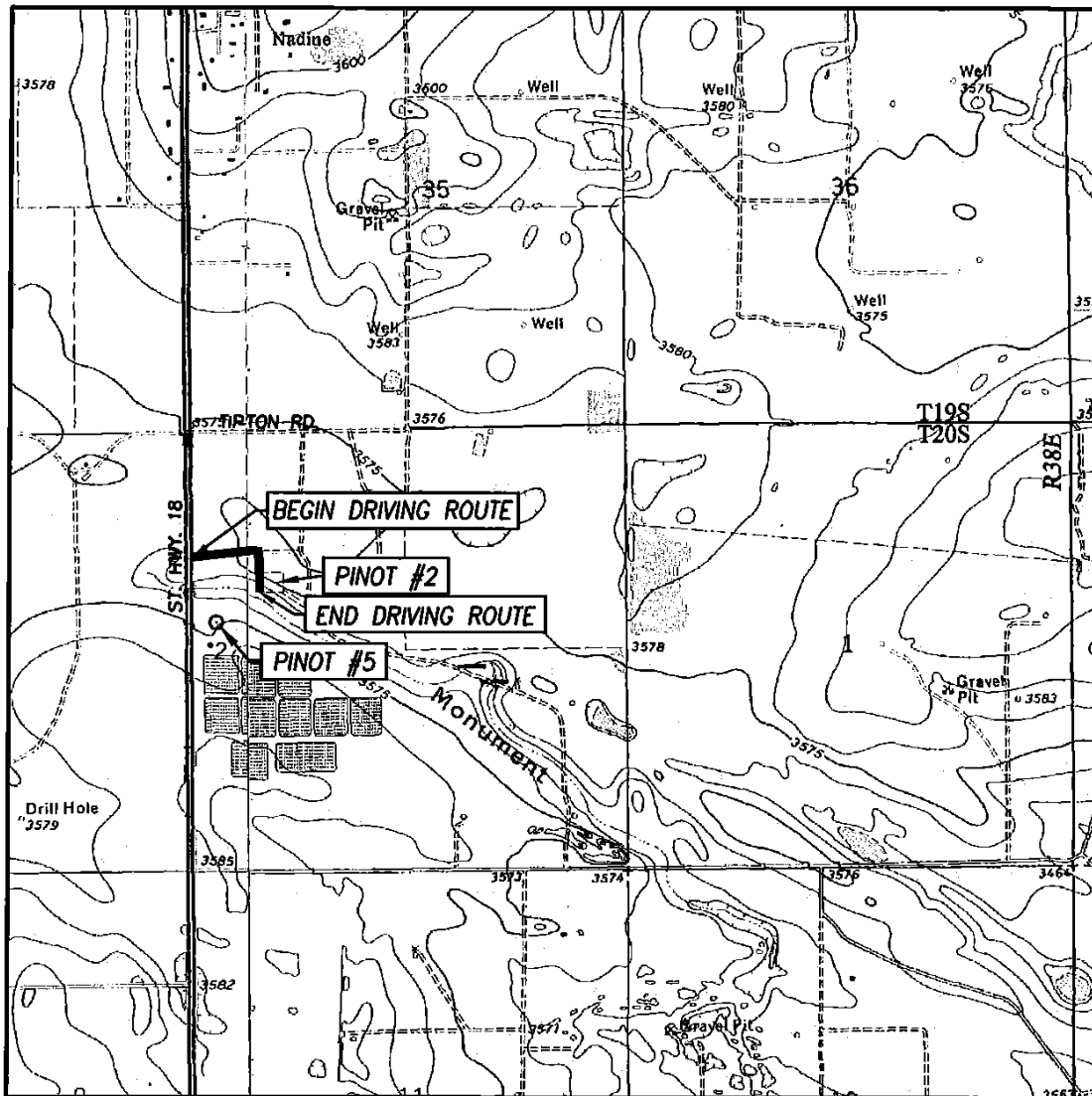
APRIL 30, 2014
Date of Survey

Signature & Seal of Professional Surveyor:

 Ronald J. Eidson
 Certificate Number 12641
 Professional Surveyor 3239

ACK JWSC W.O.: 14.11.0395

LOCATION VERIFICATION MAP



SCALE: 1" = 2000'

CONTOUR INTERVAL:
HOBBS SE, N.M. - 10'
HOBBS SW, N.M. - 10'

SEC. 2 TWP. 20-S RGE. 38-E

SURVEY N.M.P.M.

COUNTY LEA STATE NEW MEXICO

DESCRIPTION 2310' FNL & 330' FWL

ELEVATION 3574'

OPERATOR APACHE CORPORATION

LEASE PINOT

U.S.G.S. TOPOGRAPHIC MAP
HOBBS SE, N.M.

DIRECTIONS TO PINOT #5:

FROM THE INTERSECTION OF ST. HIGHWAY 18 AND TIPTON ROAD, GO EAST ON TIPTON ROAD FOR APPROX. 0.3 MILES. TURN RIGHT AND GO SOUTH AT LEASE ROAD APPROX. 0.1 MILE TO EXISTING BATTERY TANK. THE LOCATION IS SOUTH APPROX. 740 FEET.



PROVIDING SURVEYING SERVICES
SINCE 1946
JOHN WEST SURVEYING COMPANY
412 N. DAL PASO HOBBS, N.M. 88240
(575) 393-3117 www.jwsc.biz
TBPLS# 10021000

DISTRICT I
1625 N. French Dr., Hobbs, NM 88240
Phone: (575) 393-6161 Fax: (575) 393-0720

DISTRICT II
811 S. First St., Artesia, NM 88210
Phone: (575) 748-1283 Fax: (575) 748-9720

DISTRICT III
1000 Rio Brazos Road, Aztec, NM 87410
Phone: (505) 334-6178 Fax: (505) 334-6170

DISTRICT IV
1220 S. St. Francis Dr., Santa Fe, NM 87505
Phone: (505) 476-3460 Fax: (505) 476-3462

State of New Mexico
Energy, Minerals & Natural Resources Department
OIL CONSERVATION DIVISION
1220 South St. Francis Dr.
Santa Fe, New Mexico 87505

Form C-102
Revised August 1, 2011
Submit one copy to appropriate
District Office

☐ AMENDED REPORT

WELL LOCATION AND ACREAGE DEDICATION PLAT

API Number 30-025-	Pool Code 33280	House; Blinebry	House; Tubb	Pool Name House; Drinkard	House; ABO
Property Code 39779	Property Name PINOT				Well Number 5
OGRID No. 873	Operator Name APACHE CORPORATION				Elevation 3574'

Surface Location

UL or lot No.	Section	Township	Range	Lot Idn	Feet from the	North/South line	Feet from the	East/West line	County
E	2	20-S	38-E		2310	NORTH	330	WEST	LEA

Bottom Hole Location If Different From Surface

UL or lot No.	Section	Township	Range	Lot Idn	Feet from the	North/South line	Feet from the	East/West line	County
Dedicated Acres 40		Joint or Infill		Consolidation Code		Order No.			

NO ALLOWABLE WILL BE ASSIGNED TO THIS COMPLETION UNTIL ALL INTERESTS HAVE BEEN CONSOLIDATED OR A NON-STANDARD UNIT HAS BEEN APPROVED BY THE DIVISION

LOT 4	LOT 3	LOT 2	LOT 1
39.73 AC.	39.77 AC.	39.79 AC.	39.83 AC.
<p>GEODETIC COORDINATES NAD 27 NME</p> <p>SURFACE LOCATION Y=585182.5 N X=871714.6 E</p> <p>LAT.=32.602971° N LONG.=103.126305° W</p> <p>LAT.=32° 36' 11" N LONG.=103° 07' 35" W</p> <p>GEODETIC COORDINATES NAD 83 NME</p> <p>SURFACE LOCATION Y=585241.7 N X=912896.5 E</p> <p>LAT.=32.603086° N LONG.=103.126783° W</p> <p>LAT.=32° 36' 11" N LONG.=103° 07' 36" W</p>			

OPERATOR CERTIFICATION

I hereby certify that the information herein is true and complete to the best of my knowledge and belief, and that this organization either owns a working interest or unleased mineral interest in the land including the proposed bottom hole location or has a right to drill this well at this location pursuant to a contract with an owner of such mineral or working interest, or to a voluntary pooling agreement or a compulsory pooling order heretofore entered by the division.

Michelle Cooper 5-22-14
Signature Date

Michelle Cooper
Printed Name

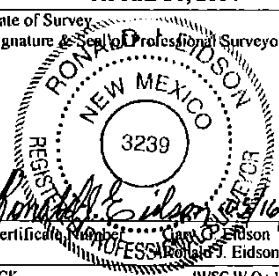
michelle.cooper@apachecorp.com
E-mail Address

SURVEYOR CERTIFICATION

I hereby certify that the well location shown on this plat was plotted from field notes of actual surveys made by me or under my supervision, and that the same is true and correct to the best of my belief.

APRIL 30, 2014
Date of Survey

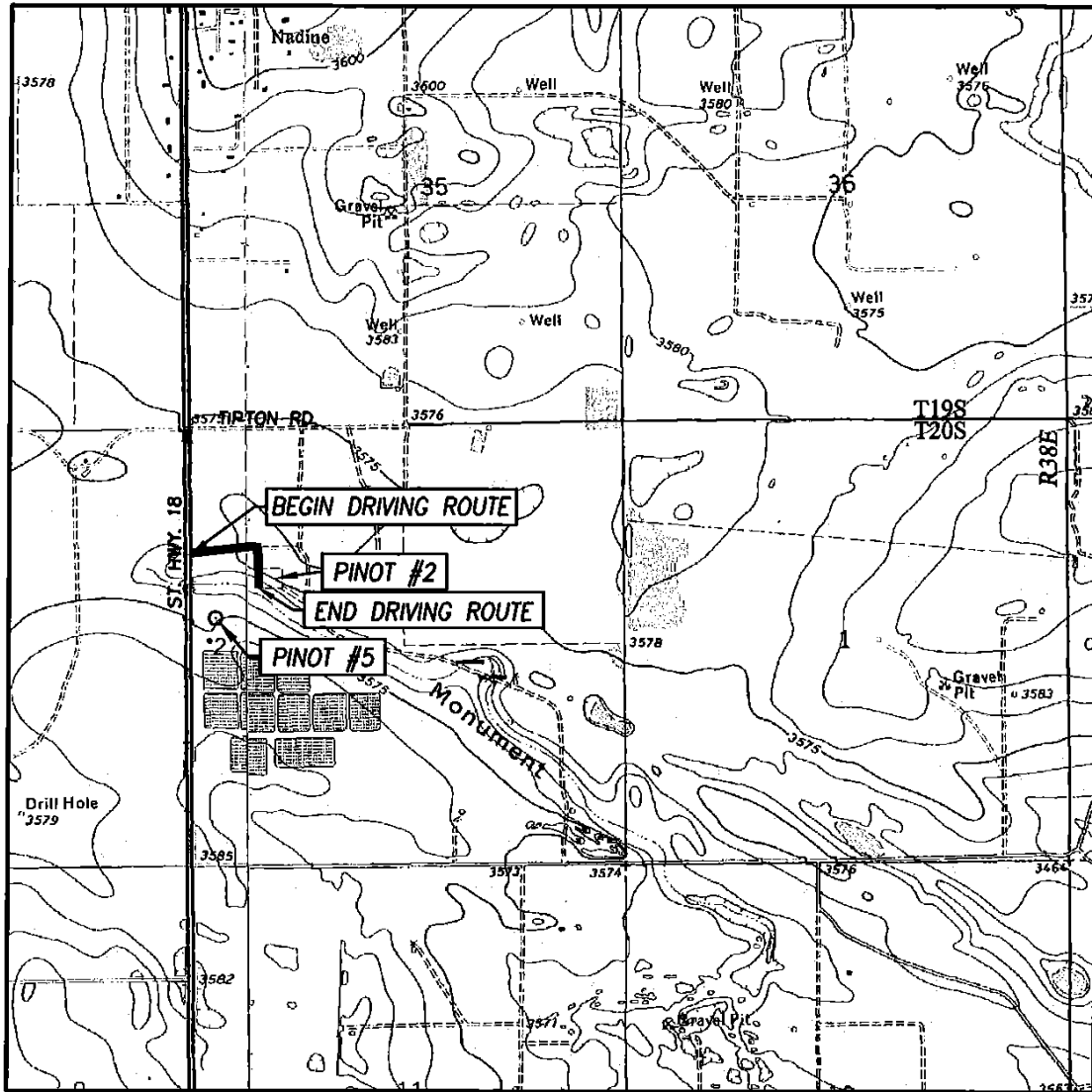
Ronald J. Eidson
Signature & Seal of Professional Surveyor:



Certificate Number: 12641
Professional Surveyor: Ronald J. Eidson 3239

ACK JWSC W.O.: 14.11.0395

LOCATION VERIFICATION MAP



SCALE: 1" = 2000'

CONTOUR INTERVAL:
HOBBS SE, N.M. - 10'
HOBBS SW, N.M. - 10'

SEC. 2 TWP. 20-S RGE. 38-E

SURVEY N.M.P.M.

COUNTY LEA STATE NEW MEXICO

DESCRIPTION 2310' FNL & 330' FWL

ELEVATION 3574'

OPERATOR APACHE CORPORATION

LEASE PINOT

U.S.G.S. TOPOGRAPHIC MAP
HOBBS SE, N.M.

DIRECTIONS TO PINOT #5:

FROM THE INTERSECTION OF ST. HIGHWAY 18 AND TIPTON ROAD, GO EAST ON TIPTON ROAD FOR APPROX. 0.3 MILES. TURN RIGHT AND GO SOUTH AT LEASE ROAD APPROX. 0.1 MILE TO EXISTING BATTERY TANK. THE LOCATION IS SOUTH APPROX. 740 FEET.



PROVIDING SURVEYING SERVICES
SINCE 1946
JOHN WEST SURVEYING COMPANY
412 N. DAL PASO HOBBS, N.M. 88240
(575) 393-3117 www.jwsc.biz
TBPLS# 10021000

DISTRICT I
1625 N. French Dr., Hobbs, NM 88240
Phone: (575) 393-6161 Fax: (575) 393-0720

DISTRICT II
811 S. First St., Artesia, NM 88210
Phone: (575) 748-1283 Fax: (575) 748-9720

DISTRICT III
1000 Rio Brazos Road, Aztec, NM 87410
Phone: (505) 334-6178 Fax: (505) 334-6170

DISTRICT IV
1220 S. St. Francis Dr., Santa Fe, NM 87505
Phone: (505) 476-3460 Fax: (505) 476-3462

State of New Mexico
Energy, Minerals & Natural Resources Department
OIL CONSERVATION DIVISION
1220 South St. Francis Dr.
Santa Fe, New Mexico 87505

Form C-102
Revised August 1, 2011
Submit one copy to appropriate
District Office

☐ AMENDED REPORT

WELL LOCATION AND ACREAGE DEDICATION PLAT

API Number 30-025-	Pool Code 33280	House; Blinebry	House; Tubb	Pool Name House; Drinkard	House; ABO
Property Code 39779	Property Name PINOT				Well Number 5
OGRID No. 873	Operator Name APACHE CORPORATION				Elevation 3574'

Surface Location

UL or lot No.	Section	Township	Range	Lot Idn	Feet from the	North/South line	Feet from the	East/West line	County
E	2	20-S	38-E		2310	NORTH	330	WEST	LEA

Bottom Hole Location If Different From Surface

UL or lot No.	Section	Township	Range	Lot Idn	Feet from the	North/South line	Feet from the	East/West line	County
Dedicated Acres 40		Joint or Infill		Consolidation Code		Order No.			

NO ALLOWABLE WILL BE ASSIGNED TO THIS COMPLETION UNTIL ALL INTERESTS HAVE BEEN CONSOLIDATED OR A NON-STANDARD UNIT HAS BEEN APPROVED BY THE DIVISION

LOT 4	LOT 3	LOT 2	LOT 1
39.73 AC.	39.77 AC.	39.79 AC.	39.83 AC.
<p>GEODETIC COORDINATES NAD 27 NME</p> <p>SURFACE LOCATION Y=585182.5 N X=871714.6 E</p> <p>LAT.=32.602971° N LONG.=103.126305° W</p> <p>LAT.=32° 36' 11" N LONG.=103° 07' 35" W</p> <p>GEODETIC COORDINATES NAD 83 NME</p> <p>SURFACE LOCATION Y=585241.7 N X=912896.5 E</p> <p>LAT.=32.603086° N LONG.=103.126783° W</p> <p>LAT.=32° 36' 11" N LONG.=103° 07' 36" W</p>			

OPERATOR CERTIFICATION

I hereby certify that the information herein is true and complete to the best of my knowledge and belief, and that this organization either owns a working interest or unleased mineral interest in the land including the proposed bottom hole location or has a right to drill this well at this location pursuant to a contract with an owner of such mineral or working interest, or to a voluntary pooling agreement or a compulsory pooling order heretofore entered by the division.

Michelle Cooper 5-22-14
Signature Date

Michelle Cooper
Printed Name

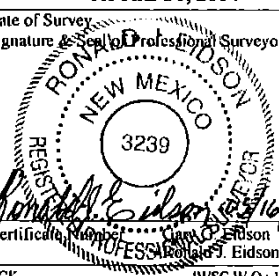
michelle.cooper@apachecorp.com
E-mail Address

SURVEYOR CERTIFICATION

I hereby certify that the well location shown on this plat was plotted from field notes of actual surveys made by me or under my supervision, and that the same is true and correct to the best of my belief.

APRIL 30, 2014
Date of Survey

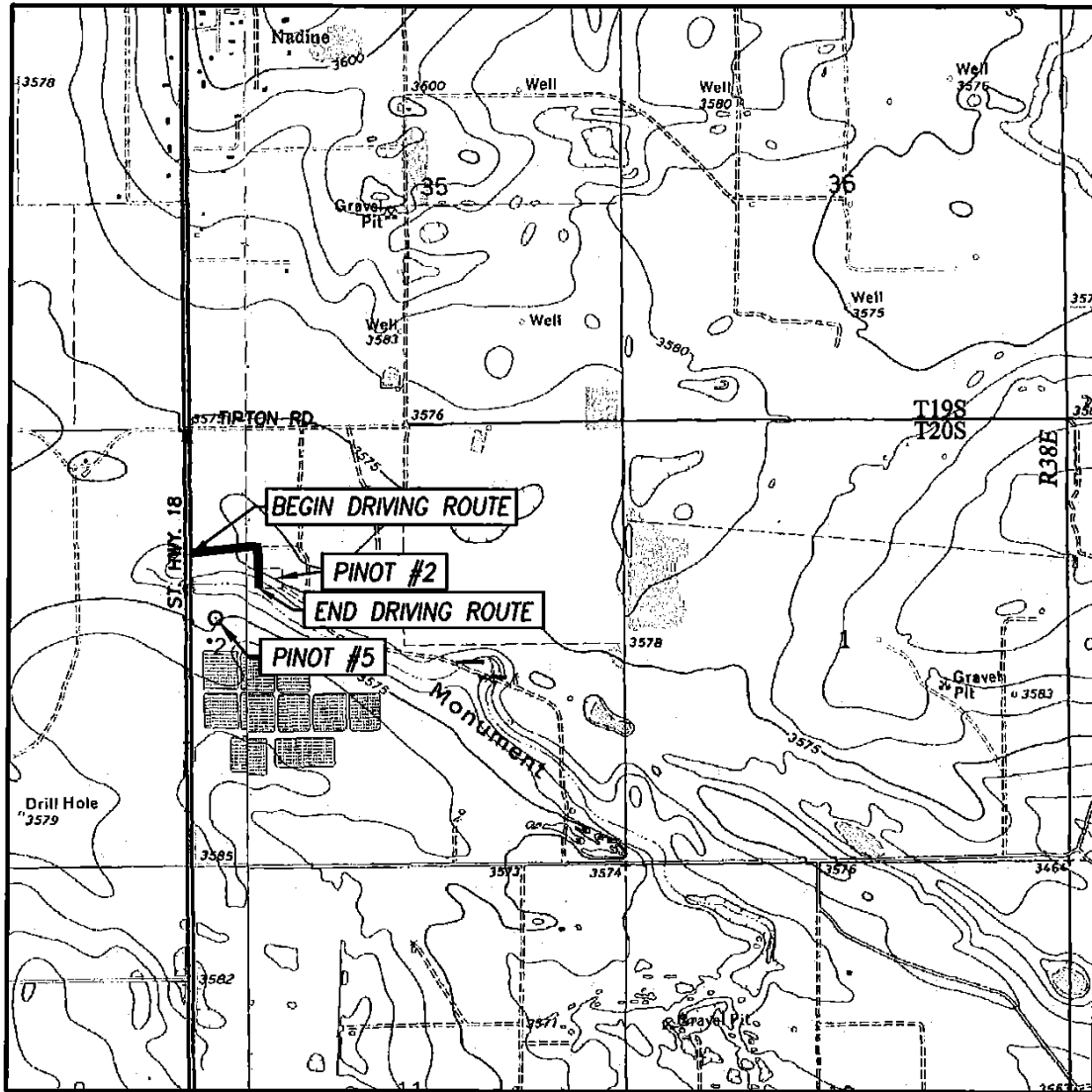
Ronald J. Eidson
Signature & Seal of Professional Surveyor:



Certificate Number: 12641
Professional Surveyor: Ronald J. Eidson 3239

ACK JWSC W.O.: 14.11.0395

LOCATION VERIFICATION MAP



SCALE: 1" = 2000'

CONTOUR INTERVAL:
HOBBS SE, N.M. - 10'
HOBBS SW, N.M. - 10'

SEC. 2 TWP. 20-S RGE. 38-E

SURVEY N.M.P.M.

COUNTY LEA STATE NEW MEXICO

DESCRIPTION 2310' FNL & 330' FWL

ELEVATION 3574'

OPERATOR APACHE CORPORATION

LEASE PINOT

U.S.G.S. TOPOGRAPHIC MAP
HOBBS SE, N.M.

DIRECTIONS TO PINOT #5:

FROM THE INTERSECTION OF ST. HIGHWAY 18 AND TIPTON ROAD, GO EAST ON TIPTON ROAD FOR APPROX. 0.3 MILES. TURN RIGHT AND GO SOUTH AT LEASE ROAD APPROX. 0.1 MILE TO EXISTING BATTERY TANK. THE LOCATION IS SOUTH APPROX. 740 FEET.



PROVIDING SURVEYING SERVICES
SINCE 1946
JOHN WEST SURVEYING COMPANY
412 N. DAL PASO HOBBS, N.M. 88240
(575) 393-3117 www.jwsc.biz
TBPLS# 10021000

District I
1625 N. French Dr., Hobbs, NM 88240
Phone:(575) 393-8181 Fax:(575) 393-0720
District II
811 S. First St., Artesia, NM 88210
Phone:(575) 748-1283 Fax:(575) 748-9720
District III
1000 Rio Brazos Rd., Aztec, NM 87410
Phone:(505) 334-8178 Fax:(505) 334-8170
District IV
1220 S. St Francis Dr., Santa Fe, NM 87505
Phone:(505) 476-3470 Fax:(505) 476-3462

State of New Mexico
Energy, Minerals and Natural Resources
Oil Conservation Division
1220 S. St Francis Dr.
Santa Fe, NM 87505

Form APD Comments

Permit 188647

PERMIT COMMENTS

Operator Name and Address: APACHE CORP [873] 303 Veterans Airpark Lane Midland, TX 79705		API Number: 30-025-41867
		Well: PINOT #005
Created By	Comment	Comment Date

District I
1625 N. French Dr., Hobbs, NM 88240
Phone:(575) 393-6161 Fax:(575) 393-0720
District II
811 S. First St., Artesia, NM 88210
Phone:(575) 748-1283 Fax:(575) 748-9720
District III
1000 Rio Brazos Rd., Aztec, NM 87410
Phone:(505) 334-6178 Fax:(505) 334-6170
District IV
1220 S. St Francis Dr., Santa Fe, NM 87505
Phone:(505) 476-3470 Fax:(505) 476-3462

State of New Mexico
Energy, Minerals and Natural Resources
Oil Conservation Division
1220 S. St Francis Dr.
Santa Fe, NM 87505

Form APD Conditions

Permit 188647

PERMIT CONDITIONS OF APPROVAL

Operator Name and Address: APACHE CORP [873] 303 Veterans Airpark Lane Midland, TX 79705	API Number: 30-025-41867
	Well: PINOT #005

OCD Reviewer	Condition
pkautz	Once the well is spud, to prevent ground water contamination through whole or partial conduits from the surface, the operator shall drill without interruption through the fresh water zone or zones and shall immediately set in cement the water protection string
pkautz	If using a pit for drilling and completion operations, must have an approved pit from prior to spudding the well.
pkautz	Surface casing must be set 25' below top of Rustler Anhydrite in order to seal off protectable water
pkautz	SURFACE & PRODUCTION CASING - Cement must circulate to surface
pkautz	Will require form C-103 per R-11363 preapproved pools(House;Blincy, House;Tubb and House;Drinkard) for Downhole commingling before these zones can be produced by commingling in the wellbore in accordance with the Rule 19.15.12.11. Will require form C-107A submitted to Santa Fe when downhole comingling House;Abo with other pools