

istrict I
25 N. French Dr., Hobbs, NM 88240
istrict II
01 W. Grand Avenue, Artesia, NM 88210
istrict III
00 Rio Brazos Road, Aztec, NM 87410
istrict IV
20 S. St. Francis Dr., Santa Fe, NM 87505

State of New Mexico
Energy Minerals and Natural Resources

Oil Conservation Division
1220 South St. Francis Dr.
Santa Fe, NM 87505

Form C-141
Revised October 10, 2003

Submit 2 Copies to appropriate
District Office in accordance
with Rule 116 on back
side of form

Release Notification and Corrective Action

OPERATOR

☒ Initial Report ☐ Final Report

Name of Company: Elm Ridge Exploration	Contact: Amy Mackey	
Address: PO Box 156, Bloomfield, NM 87413	Telephone No.: (505) 632-3476 Ext 201	
Facility Name: Bisti Coal 17 COM 1	Facility Type: Gas Well	
Surface Owner: Federal	Mineral Owner:	Lease No.: 078058

LOCATION OF RELEASE

Unit Letter A	Section 17	Township 25N	Range 12W	Feet from the 790	North/South Line FNL	Feet from the 790	East/West Line FEL	County San Juan
------------------	---------------	-----------------	--------------	----------------------	-------------------------	----------------------	-----------------------	--------------------

Latitude 36.406268 Longitude -108.128514

NATURE OF RELEASE

Type of Release: Produced Water	Volume of Release: Unknown	Volume Recovered: Unknown
Source of Release: Earth Pit	Date and Hour of Occurrence: Historical	Date and Hour of Discovery: NA
Was Immediate Notice Given? <input type="checkbox"/> Yes <input type="checkbox"/> No <input checked="" type="checkbox"/> Not Required	If YES, To Whom?	
By Whom?	Date and Hour	
Was a Watercourse Reached? <input type="checkbox"/> Yes <input checked="" type="checkbox"/> No	If YES, Volume Impacting the Watercourse.	

Was a Watercourse was Impacted, Describe Fully.*
Describe Cause of Problem and Remedial Action Taken.*
Produced Water from gas well at the mentioned location formerly discharged into an earthen pit on location. The well has been altered to no longer drain to an earthen pit, but instead into an Above Ground Storage Tank (AST).

Describe Area Affected and Cleanup Action Taken.*
Low sand was removed from the earthen pit, and approximately three (3) yards of 'production sludge' were removed from the earthen pit. A 5-point composite sample was collected from approximately six (6) feet below the earthen pit once it was removed. The sample was analyzed in the field for total petroleum hydrocarbons (TPH) via USEPA Method 418.1, and in Envirotech's laboratory for benzene and BTEX via USEPA Method 8021, and for total chlorides via USEPA Method 4500B. The sample returned results below the 'Pit Rule' standards of 100 mg/kg TPH, 0.2 mg/kg benzene, 50 mg/kg BTEX, and 250 mg/kg total chlorides, confirming that a release had not occurred. Analytical results are attached for your reference.

I hereby certify that the information given above is true and complete to the best of my knowledge and understand that pursuant to NMOCD rules and regulations all operators are required to report and/or file certain release notifications and perform corrective actions for releases which may endanger public health or the environment. The acceptance of a C-141 report by the NMOCD marked as "Final Report" does not relieve the operator of liability should their operations have failed to adequately investigate and remediate contamination that pose a threat to ground water, surface water, human health or the environment. In addition, NMOCD acceptance of a C-141 report does not relieve the operator of responsibility for compliance with any other federal, state, or local laws and/or regulations.

Signature:	OIL CONSERVATION DIVISION		
Printed Name: Ms. Amy Mackey	Approved by District Supervisor:		
Title: Administrative Manager	Approval Date:	Expiration Date:	
Email Address: amackey1@elmrige.net	Conditions of Approval:		Attached <input type="checkbox"/>
Phone: 505-632-3476 Ext 201			

Attach Additional Sheets If Necessary

strict I
25 N. French Dr., Hobbs, NM 88240
strict II
01 W. Grand Avenue, Artesia, NM 88210
strict III
00 Rio Brazos Road, Aztec, NM 87410
strict IV
20 S. St. Francis Dr., Santa Fe, NM 87505

State of New Mexico
Energy Minerals and Natural Resources
Department
Oil Conservation Division
1220 South St. Francis Dr.
Santa Fe, NM 87505

Form C-144
July 21, 2008

For temporary pits, closed-loop systems, and below-grade tanks, submit to the appropriate NMOCD District Office.
For permanent pits and exceptions submit to the Santa Fe Environmental Bureau office and provide a copy to the appropriate NMOCD District Office.

**Pit, Closed-Loop System, Below-Grade Tank, or
Proposed Alternative Method Permit or Closure Plan Application**

Type of action: ☐ Permit of a pit, closed-loop system, below-grade tank, or proposed alternative method
☒ Closure of a pit, closed-loop system, below-grade tank, or proposed alternative method
☐ Modification to an existing permit
☐ Closure plan only submitted for an existing permitted or non-permitted pit, closed-loop system, below-grade tank, or proposed alternative method

Instructions: Please submit one application (Form C-144) per individual pit, closed-loop system, below-grade tank or alternative request

se be advised that approval of this request does not relieve the operator of liability should operations result in pollution of surface water, ground water or the environment. Nor does approval relieve the operator of its responsibility to comply with any other applicable governmental authority's rules, regulations or ordinances.

erator: Elm Ridge Exploration OGRID #: 149052
ldress: P.O. Box 156; Bloomfield, NM 87413
cility or well name: Bisti Coal 17 COM 1
PI Number: 3004528379 OCD Permit Number:
L or Qtr/Qtr A Section 17 Township 25N Range 12W County: San Juan
nter of Proposed Design: Latitude 36.406268 Longitude -108.128514 NAD: ☐ 1927 ☒ 1983
rface Owner: ☒ Federal ☐ State ☐ Private ☐ Tribal Trust or Indian Allotment

Pit: Subsection F or G of 19.15.17.11 NMAC
mporary: ☐ Drilling ☐ Workover
Permanent ☐ Emergency ☐ Cavitation ☐ P&A
Lined ☒ Unlined Liner type: Thickness _____ mil ☐ LLDPE ☐ HDPE ☐ PVC ☐ Other _____
String-Reinforced
ier Seams: ☐ Welded ☐ Factory ☐ Other _____ Volume: _____ bbl Dimensions: L 6' x W 5' x D 2.5'

Closed-loop System: Subsection H of 19.15.17.11 NMAC
pe of Operation: ☐ P&A ☐ Drilling a new well ☐ Workover or Drilling (Applies to activities which require prior approval of a permit or notice of ent)
Drying Pad ☐ Above Ground Steel Tanks ☐ Haul-off Bins ☐ Other _____
Lined ☐ Unlined Liner type: Thickness _____ mil ☐ LLDPE ☐ HDPE ☐ PVC ☐ Other _____
er Seams: ☐ Welded ☐ Factory ☐ Other _____

Below-grade tank: Subsection I of 19.15.17.11 NMAC
lume: _____ bbl Type of fluid:
ick Construction material:
Secondary containment with leak detection ☐ Visible sidewalls, liner, 6-inch lift and automatic overflow shut-off
Visible sidewalls and liner ☐ Visible sidewalls only ☐ Other
er type: Thickness _____ mil ☐ HDPE ☐ PVC ☐ Other _____

Alternative Method:
mittal of an exception request is required. Exceptions must be submitted to the Santa Fe Environmental Bureau office for consideration of approval.

encing: Subsection D of 19.15.17.11 NMAC (*Applies to permanent pits, temporary pits, and below-grade tanks*)

☐ Chain link, six feet in height, two strands of barbed wire at top (*Required if located within 1000 feet of a permanent residence, school, hospital, institution or church*)

☐ Four foot height, four strands of barbed wire evenly spaced between one and four feet

☐ Alternate. Please specify _____

etting: Subsection E of 19.15.17.11 NMAC (*Applies to permanent pits and permanent open top tanks*)

☐ Screen ☐ Netting ☐ Other _____

☐ Monthly inspections (If netting or screening is not physically feasible)

igns: Subsection C of 19.15.17.11 NMAC

☐ 12"x 24", 2" lettering, providing Operator's name, site location, and emergency telephone numbers

☐ Signed in compliance with 19.15.3.103 NMAC

Administrative Approvals and Exceptions:

ifications and/or demonstrations of equivalency are required. Please refer to 19.15.17 NMAC for guidance.

Please check a box if one or more of the following is requested, if not leave blank:

☐ Administrative approval(s): Requests must be submitted to the appropriate division district or the Santa Fe Environmental Bureau office for consideration of approval.

☐ Exception(s): Requests must be submitted to the Santa Fe Environmental Bureau office for consideration of approval.

Siting Criteria (regarding permitting): 19.15.17.10 NMAC

Instructions: The applicant must demonstrate compliance for each siting criteria below in the application. Recommendations of acceptable source material are provided below. Requests regarding changes to certain siting criteria may require administrative approval from the appropriate district office or may be considered an exception which must be submitted to the Santa Fe Environmental Bureau office for consideration of approval.

Applicant must attach justification for request. Please refer to 19.15.17.10 NMAC for guidance. Siting criteria does not apply to drying pads or above-grade tanks associated with a closed-loop system.

ound water is less than 50 feet below the bottom of the temporary pit, permanent pit, or below-grade tank.

- NM Office of the State Engineer - iWATERS database search; USGS; Data obtained from nearby wells

☐ Yes ☐ No

ithin 300 feet of a continuously flowing watercourse, or 200 feet of any other significant watercourse or lakebed, sinkhole, or playa
e (measured from the ordinary high-water mark).0.

- Topographic map; Visual inspection (certification) of the proposed site

☐ Yes ☐ No

ithin 300 feet from a permanent residence, school, hospital, institution, or church in existence at the time of initial application.

- (*Applies to temporary, emergency, or cavitation pits and below-grade tanks*) (

☐ Yes ☐ No

☐ NA

ithin 1000 feet from a permanent residence, school, hospital, institution, or church in existence at the time of initial application.

Applies to permanent pits)

- Visual inspection (certification) of the proposed site; Aerial photo; Satellite image

☐ Yes ☐ No

☐ NA

thin 500 horizontal feet of a private, domestic fresh water well or spring that less than five households use for domestic or stock
tering purposes, or within 1000 horizontal feet of any other fresh water well or spring, in existence at the time of initial application.

- NM Office of the State Engineer - iWATERS database search; Visual inspection (certification) of the proposed site

☐ Yes ☐ No

thin incorporated municipal boundaries or within a defined municipal fresh water well field covered under a municipal ordinance
opted pursuant to NMSA 1978, Section 3-27-3, as amended.

thin 500 feet of a wetland.

☐ Yes ☐ No

thin the area overlying a subsurface mine.

thin an unstable area.

- Engineering measures incorporated into the design; NM Bureau of Geology & Mineral Resources; USGS; NM Geological
Society; Topographic map

☐ Yes ☐ No

thin a 100-year floodplain.

- FEMA map

☐ Yes ☐ No

☐ Yes ☐ No

☐ Yes ☐ No

Temporary Pits, Emergency Pits, and Below-grade Tanks Permit Application Attachment Checklist: Subsection B of 19.15.17.9 NMAC
Instructions: Each of the following items must be attached to the application. Please indicate, by a check mark in the box, that the documents are attached.

- ☐ Hydrogeologic Report (Below-grade Tanks) - based upon the requirements of Paragraph (4) of Subsection B of 19.15.17.9 NMAC
- ☐ Hydrogeologic Data (Temporary and Emergency Pits) - based upon the requirements of Paragraph (2) of Subsection B of 19.15.17.9 NMAC
- ☐ Siting Criteria Compliance Demonstrations - based upon the appropriate requirements of 19.15.17.10 NMAC
- ☐ Design Plan - based upon the appropriate requirements of 19.15.17.11 NMAC
- ☐ Operating and Maintenance Plan - based upon the appropriate requirements of 19.15.17.12 NMAC
- ☐ Closure Plan (Please complete Boxes 14 through 18, if applicable) - based upon the appropriate requirements of Subsection C of 19.15.17.9 NMAC and 19.15.17.13 NMAC

☐ Previously Approved Design (attach copy of design) API Number: _____ or Permit Number: _____

Closed-loop Systems Permit Application Attachment Checklist: Subsection B of 19.15.17.9 NMAC

Instructions: Each of the following items must be attached to the application. Please indicate, by a check mark in the box, that the documents are attached.

- ☐ Geologic and Hydrogeologic Data (only for on-site closure) - based upon the requirements of Paragraph (3) of Subsection B of 19.15.17.9
- ☐ Siting Criteria Compliance Demonstrations (only for on-site closure) - based upon the appropriate requirements of 19.15.17.10 NMAC
- ☐ Design Plan - based upon the appropriate requirements of 19.15.17.11 NMAC
- ☐ Operating and Maintenance Plan - based upon the appropriate requirements of 19.15.17.12 NMAC
- ☐ Closure Plan (Please complete Boxes 14 through 18, if applicable) - based upon the appropriate requirements of Subsection C of 19.15.17.9 NMAC and 19.15.17.13 NMAC

☐ Previously Approved Design (attach copy of design) API Number: _____

☐ Previously Approved Operating and Maintenance Plan API Number: _____ (Applies only to closed-loop system that use above ground steel tanks or haul-off bins and propose to implement waste removal for closure)

Permanent Pits Permit Application Checklist: Subsection B of 19.15.17.9 NMAC

Instructions: Each of the following items must be attached to the application. Please indicate, by a check mark in the box, that the documents are attached.

- ☐ Hydrogeologic Report - based upon the requirements of Paragraph (1) of Subsection B of 19.15.17.9 NMAC
- ☐ Siting Criteria Compliance Demonstrations - based upon the appropriate requirements of 19.15.17.10 NMAC
- ☐ Climatological Factors Assessment
- ☐ Certified Engineering Design Plans - based upon the appropriate requirements of 19.15.17.11 NMAC
- ☐ Dike Protection and Structural Integrity Design - based upon the appropriate requirements of 19.15.17.11 NMAC
- ☐ Leak Detection Design - based upon the appropriate requirements of 19.15.17.11 NMAC
- ☐ Liner Specifications and Compatibility Assessment - based upon the appropriate requirements of 19.15.17.11 NMAC
- ☐ Quality Control/Quality Assurance Construction and Installation Plan
- ☐ Operating and Maintenance Plan - based upon the appropriate requirements of 19.15.17.12 NMAC
- ☐ Freeboard and Overtopping Prevention Plan - based upon the appropriate requirements of 19.15.17.11 NMAC
- ☐ Nuisance or Hazardous Odors, including H₂S, Prevention Plan
- ☐ Emergency Response Plan
- ☐ Oil Field Waste Stream Characterization
- ☐ Monitoring and Inspection Plan
- ☐ Erosion Control Plan
- ☐ Closure Plan - based upon the appropriate requirements of Subsection C of 19.15.17.9 NMAC and 19.15.17.13 NMAC

Proposed Closure: 19.15.17.13 NMAC

Instructions: Please complete the applicable boxes, Boxes 14 through 18, in regards to the proposed closure plan.

Type: ☐ Drilling ☐ Workover ☐ Emergency ☐ Cavitation ☐ P&A ☐ Permanent Pit ☐ Below-grade Tank ☐ Closed-loop System
☐ Alternative

Proposed Closure Method: ☐ Waste Excavation and Removal
☐ Waste Removal (Closed-loop systems only)
☐ On-site Closure Method (Only for temporary pits and closed-loop systems)
☐ In-place Burial ☐ On-site Trench Burial
☐ Alternative Closure Method (Exceptions must be submitted to the Santa Fe Environmental Bureau for consideration)

Site Excavation and Removal Closure Plan Checklist: (19.15.17.13 NMAC) **Instructions:** Each of the following items must be attached to the closure plan. Please indicate, by a check mark in the box, that the documents are attached.

- ☐ Protocols and Procedures - based upon the appropriate requirements of 19.15.17.13 NMAC
- ☐ Confirmation Sampling Plan (if applicable) - based upon the appropriate requirements of Subsection F of 19.15.17.13 NMAC
- ☐ Disposal Facility Name and Permit Number (for liquids, drilling fluids and drill cuttings)
- ☐ Soil Backfill and Cover Design Specifications - based upon the appropriate requirements of Subsection H of 19.15.17.13 NMAC
- ☐ Re-vegetation Plan - based upon the appropriate requirements of Subsection I of 19.15.17.13 NMAC
- ☐ Site Reclamation Plan - based upon the appropriate requirements of Subsection G of 19.15.17.13 NMAC

Waste Removal Closure For Closed-loop Systems That Utilize Above Ground Steel Tanks or Haul-off Bins Only: (19.15.17.13.D NMAC)

Instructions: Please identify the facility or facilities for the disposal of liquids, drilling fluids and drill cuttings. Use attachment if more than two facilities are required.

Disposal Facility Name: _____ Disposal Facility Permit Number: _____

Disposal Facility Name: _____ Disposal Facility Permit Number: _____

Will any of the proposed closed-loop system operations and associated activities occur on or in areas that *will not* be used for future service and operations?

☐ Yes (If yes, please provide the information below) ☐ No

Required for impacted areas which will not be used for future service and operations:

☐ Soil Backfill and Cover Design Specifications - based upon the appropriate requirements of Subsection H of 19.15.17.13 NMAC

☐ Re-vegetation Plan - based upon the appropriate requirements of Subsection I of 19.15.17.13 NMAC

☐ Site Reclamation Plan - based upon the appropriate requirements of Subsection G of 19.15.17.13 NMAC

Siting Criteria (regarding on-site closure methods only): 19.15.17.10 NMAC

Instructions: Each siting criteria requires a demonstration of compliance in the closure plan. Recommendations of acceptable source material are provided below. Requests regarding changes to certain siting criteria may require administrative approval from the appropriate district office or may be considered an exception which must be submitted to the Santa Fe Environmental Bureau office for consideration of approval. Justifications and/or demonstrations of equivalency are required. Please refer to 19.15.17.10 NMAC for guidance.

Ground water is less than 50 feet below the bottom of the buried waste.

- NM Office of the State Engineer - iWATERS database search; USGS; Data obtained from nearby wells

☐ Yes ☐ No
☐ NA

Ground water is between 50 and 100 feet below the bottom of the buried waste

- NM Office of the State Engineer - iWATERS database search; USGS; Data obtained from nearby wells

☐ Yes ☐ No
☐ NA

Ground water is more than 100 feet below the bottom of the buried waste.

- NM Office of the State Engineer - iWATERS database search; USGS; Data obtained from nearby wells

☐ Yes ☐ No
☐ NA

Within 300 feet of a continuously flowing watercourse, or 200 feet of any other significant watercourse or lakebed, sinkhole, or playa (measured from the ordinary high-water mark).

- Topographic map; Visual inspection (certification) of the proposed site

☐ Yes ☐ No

Within 300 feet from a permanent residence, school, hospital, institution, or church in existence at the time of initial application.

- Visual inspection (certification) of the proposed site; Aerial photo; Satellite image

☐ Yes ☐ No

Within 500 horizontal feet of a private, domestic fresh water well or spring that less than five households use for domestic or stock watering purposes, or within 1000 horizontal feet of any other fresh water well or spring, in existence at the time of initial application.

- NM Office of the State Engineer - iWATERS database; Visual inspection (certification) of the proposed site

☐ Yes ☐ No

Within incorporated municipal boundaries or within a defined municipal fresh water well field covered under a municipal ordinance adopted pursuant to NMSA 1978, Section 3-27-3, as amended.

- Written confirmation or verification from the municipality; Written approval obtained from the municipality

☐ Yes ☐ No

Within 500 feet of a wetland.

- US Fish and Wildlife Wetland Identification map; Topographic map; Visual inspection (certification) of the proposed site

☐ Yes ☐ No

Within the area overlying a subsurface mine.

- Written confirmation or verification or map from the NM EMNRD-Mining and Mineral Division

☐ Yes ☐ No

Within an unstable area.

- Engineering measures incorporated into the design; NM Bureau of Geology & Mineral Resources; USGS; NM Geological Society; Topographic map

☐ Yes ☐ No

Within a 100-year floodplain.

- FEMA map

☐ Yes ☐ No

-Site Closure Plan Checklist: (19.15.17.13 NMAC) Instructions: Each of the following items must be attached to the closure plan. Please indicate, with check mark in the box, that the documents are attached.

☐ Siting Criteria Compliance Demonstrations - based upon the appropriate requirements of 19.15.17.10 NMAC

☐ Proof of Surface Owner Notice - based upon the appropriate requirements of Subsection F of 19.15.17.13 NMAC

☐ Construction/Design Plan of Burial Trench (if applicable) based upon the appropriate requirements of 19.15.17.11 NMAC

☐ Construction/Design Plan of Temporary Pit (for in-place burial of a drying pad) - based upon the appropriate requirements of 19.15.17.11 NMAC

☐ Protocols and Procedures - based upon the appropriate requirements of 19.15.17.13 NMAC

☐ Confirmation Sampling Plan (if applicable) - based upon the appropriate requirements of Subsection F of 19.15.17.13 NMAC

☐ Waste Material Sampling Plan - based upon the appropriate requirements of Subsection F of 19.15.17.13 NMAC

☐ Disposal Facility Name and Permit Number (for liquids, drilling fluids and drill cuttings or in case on-site closure standards cannot be achieved)

☐ Soil Cover Design - based upon the appropriate requirements of Subsection H of 19.15.17.13 NMAC

☐ Re-vegetation Plan - based upon the appropriate requirements of Subsection I of 19.15.17.13 NMAC

☐ Site Reclamation Plan - based upon the appropriate requirements of Subsection G of 19.15.17.13 NMAC

Operator Application Certification:

hereby certify that the information submitted with this application is true, accurate and complete to the best of my knowledge and belief.

Name (Print): _____ Title: _____

Signature: _____ Date: _____

Mail address: _____ Telephone: _____

CD Approval: ☐ Permit Application (including closure plan) ☐ Closure Plan (only) ☐ OCD Conditions (see attachment)

CD Representative Signature: _____ **Approval Date:** _____

Title: _____ **OCD Permit Number:** _____

Closure Report (required within 60 days of closure completion): Subsection K of 19.15.17.13 NMAC

Instructions: Operators are required to obtain an approved closure plan prior to implementing any closure activities and submitting the closure report. The closure report is required to be submitted to the division within 60 days of the completion of the closure activities. Please do not complete this section of the form until an approved closure plan has been obtained and the closure activities have been completed.

☒ Closure Completion Date: 7/28/09

Closure Method:

Waste Excavation and Removal ☐ On-Site Closure Method ☐ Alternative Closure Method ☐ Waste Removal (Closed-loop systems only)

If different from approved plan, please explain.

Closure Report Regarding Waste Removal Closure For Closed-loop Systems That Utilize Above Ground Steel Tanks or Haul-off Bins Only:

Instructions: Please identify the facility or facilities for where the liquids, drilling fluids and drill cuttings were disposed. Use attachment if more than 1 facility was utilized.

Disposal Facility Name: Envirotech Landfarm #2 Disposal Facility Permit Number: NM-01-0011

Disposal Facility Name: _____ Disposal Facility Permit Number: _____

Are the closed-loop system operations and associated activities performed on or in areas that will not be used for future service and operations?

☐ Yes (If yes, please demonstrate compliance to the items below) ☐ No

Required for impacted areas which will not be used for future service and operations:

- ☒ Site Reclamation (Photo Documentation)
☒ Soil Backfilling and Cover Installation
☒ Re-vegetation Application Rates and Seeding Technique

Closure Report Attachment Checklist: Instructions: Each of the following items must be attached to the closure report. Please indicate, by a check mark in the box, that the documents are attached.

- ☒ Proof of Closure Notice (surface owner and division) **see attached**
☐ Proof of Deed Notice (required for on-site closure)
☐ Plot Plan (for on-site closures and temporary pits)
☒ Confirmation Sampling Analytical Results (if applicable) **see attached**
☐ Waste Material Sampling Analytical Results (required for on-site closure)
☒ Disposal Facility Name and Permit Number **Envirotech NM-01-0011**
☒ Soil Backfilling and Cover Installation **see attached**
☒ Re-vegetation Application Rates and Seeding Technique **pursuant to BLM MOU**
☒ Site Reclamation (Photo Documentation) **see attached**

On-site Closure Location: Latitude _____ Longitude _____ NAD: ☐ 1927 ☐ 1983

Operator Closure Certification:

hereby certify that the information and attachments submitted with this closure report is true, accurate and complete to the best of my knowledge and belief. I also certify that the closure complies with all applicable closure requirements and conditions specified in the approved closure plan.

(Print): Ms. Amy Mackey Title: Administrative Manager

Signature: _____ Date: _____

Mail address: amackey1@elmridge.net Telephone: _____

Earthen Pit Closure Checklist

- 1) Elm Ridge Exploration, or a contractor acting on behalf of Elm Ridge Exploration, will close all former earthen pits prior to the closure date agreed upon by the New Mexico Oil Conservation Division of December 31, 2009.
Closure date for the earth pit located at Bisti Coal 17 COM 1 well site is July 28, 2009.
- 2) In accordance with of Subsection A of 19.15.17.13 NMAC, Elm Ridge Exploration, or a contractor acting on behalf of Elm Ridge Exploration, will close any earthen pits at a date the division requires because of imminent danger to fresh water, public health or the environment.
None of the earthen pits to be closed by Elm Ridge Exploration are deemed an imminent risk to the environment, public health, or to fresh or public water.
- 3) Elm Ridge Exploration, or a contractor acting on behalf of Elm Ridge Exploration, will close earthen pits first which seem to pose a greater risk to fresh water, public health, or the environment. This will be determined by the locations proximately to surface water sources and distance to groundwater.
None of the earthen pits to be closed by Elm Ridge Exploration are deemed an imminent risk to the environment, public health or to fresh or public water.
- 4) No less than 60 days prior to any earthen pit closure activities, Elm Ridge Exploration, or a contractor acting on behalf of Elm Ridge Exploration, will provide written notification to the Santa Fe NMOCD office as well as a schedule of on-site activities, as in accordance with 19.15.17.13 Subsection J Paragraph (3) NMAC.
Notification was provided to Mr. Brad Jones of the NMOCD Santa Fe Office on July 15, 2009 along with a schedule of on-site activities; see attached *Notification Letter*.
- 5) No less than 24 hours and no greater than one (1) week prior to earthen pit removal, Elm Ridge Exploration, or a contractor acting on behalf of Elm Ridge Exploration, will provide written notification to the appropriate surface owner as well as a schedule of on-site activities, as in accordance with 19.15.17.13 Subsection J Paragraph (1) NMAC. Elm Ridge Exploration, or a contractor acting on behalf of Elm Ridge Exploration, will notify the surface owner by certified mail, return receipt requested, that the operator plans to close a earthen pit. The return receipt will be used to ensure that the surface owner has received written notification no less than 24 hours and no greater than one (1) week prior to the beginning of BGT closure activities. Evidence of mailing of the notice to the address of the surface owner shown in the county tax records is sufficient to demonstrate compliance with this requirement. Closure activities that will take place on tribal land will have notifications sent by certified mail, return receipt requested, to the appropriate tribal office. Elm Ridge Exploration, or a contractor acting on behalf of Elm Ridge Exploration, will notify the Bureau of Land Management (BLM) of closure activities for wells located on federal land per a Sundry Notice, as in accordance with 19.15.17.13 Subsection J Paragraph (1) NMAC. All notices will be sent in such a way that the surface owner received notice at least 24 hours prior to the beginning of closure activities.
Notification was provided to the Bureau of Land Management on July 22, 2009. see attached *Sundry Notice and Return Receipt*.

- 6) Elm Ridge Exploration, or a contractor acting on behalf of Elm Ridge Exploration, will remove all liquids and/or sludge, to visual extents, prior to closure sampling. Material will be disposed of at Envirotech's Landfarm #2, Permit # NM-01-0011, TNT Environmental Inc. Landfarm, Permit # NM-01-0008, Industrial Ecosystems Inc. (IEI) Landfarm, Permit # NM-01-0010B or Basin Disposal, Permit # NM-01-0005, depending on the consistence of the material removed, as in accordance with 19.15.17.13 Subsection C Paragraph (1) NMAC.

On July 28, 2009, approximately three (3) cubic yards of production sludge were removed from the earthen pit and disposed of at Envirotech's NMOCDC permitted soil remediation facility, Landfarm #2, Permit # NM-01-0011; see attached *Bill of Lading*.

- 7) Elm Ridge Exploration, or a contractor acting on behalf of Elm Ridge Exploration, will remove all on-site equipment associated with this earthen pit unless it is required for some other purpose, as in accordance with 19.15.17.13 Subsection C Paragraph (2) NMAC. The equipment that meets the requirements of 19.15.9.712 Subsection A NMAC and 19.15.9.712 Subsection D Paragraph (1) will be disposed of at San Juan County Regional Landfill. Waste that is classified by 19.15.9.712 Subsection D Paragraph (2) will be sampled accordingly to determine acceptance of this material at the San Juan County Regional Landfill. Waste that is unable to be accepted at the San Juan County Regional Landfill will be submitted to the OCD on a case-by-case basis in accordance with Paragraph (3) of Subsection D of 19.15.9.712.

All on-site equipment will be used for the continued operation of the Bisti Coal 17 COM 1 well site; see *Field Sheet* and *Site Photos*.

- 8) Once the earthen pit is removed to visual extents of contamination, a five (5)-point composite sample will be collected from directly below the liner(s) or at native soil. Additional discrete samples will be collected from any area that is wet, discolored or show other evidence of a release. All samples being collected will be analyzed for benzene and total BTEX via USEPA Method 8021B, TPH via USEPA Method 418.1, and chlorides via USEPA 300.1, as in accordance with 19.15.17.13 Subsection C Paragraph (3) NMAC.

A five (5)-point composite sample was collected at native soil beneath the earthen pit and analyzed in the field for total petroleum hydrocarbons (TPH) via USEPA Method 418.1, and analyzed in the laboratory for benzene and BTEX via USEPA Method 8021B, and for total chlorides via USEPA Method 4500B. The sample returned results below the 100 mg/kg TPH standard, the 0.2 mg/kg benzene standard, the 50 mg/kg BTEX standard and the 250 mg/kg total chloride standard, confirming that a release did NOT occur.

NAME	Benzene	BTEX	Chlorides	TPH
Pit Rule Standard	0.2 mg/kg	50 mg/kg	250 mg/kg	100 mg/kg
Earth Pit Comp 8.5' Deep	< 0.0009 mg/kg	<0.005 mg/kg	90 mg/kg	60 mg/kg

- 9) Depending on soil sample results the area will be either backfilled or the area will be excavated.
- 1) If soil samples do not exceed the regulatory standards of 0.2 mg/kg benzene, 50 mg/kg BTEX, 100 mg/kg TPH, and 250 mg/kg or background concentration of chlorides, as in accordance with 19.15.17.13 Subsection C Paragraph (3) NMAC.
 - i. Elm Ridge Exploration, or a contractor acting on behalf of Elm Ridge Exploration, shall submit a Form C-141 with the laboratory results so that the division may review the results to determine if additional delineation is required in accordance with Paragraph (4) of Subsection C of 19.15.17.13 NMAC.
Completed Form C-141 is attached for your review.
 - ii. Elm Ridge Exploration, or a contractor acting on behalf of Elm Ridge Exploration, will backfill the excavation or impacted area with non-waste containing, earthen material, in accordance with 19.15.17.13 Subsection E Paragraph (6) NMAC. A soil cover shall be installed for all backfilled excavations consisting of the background thickness of topsoil or one foot of suitable material to establish vegetation at the site, whichever is greater in accordance with Subsections H of 19.15.17.13 NMAC. The operator shall construct the soil cover to the site's existing grade and prevent ponding of water and erosion of the cover material.
Elm Ridge Exploration has backfilled the excavated area with non-waste containing earthen material, and installed a soil cover of at least one (1) foot thick of suitable material to establish vegetation at this site. The soil cover has been graded in such a way that it conforms to the grade of the natural surroundings, and will prevent ponding of water and erosion of the cover material; see *Site Photos*.
 - iii. All areas of the well site that are no longer utilized on a day to day basis for the production of oil and/or gas, Elm Ridge Exploration, or a contractor acting on behalf of Elm Ridge Exploration, will substantially restore, recontour and re-vegetate the areas, in accordance with 19.15.17.13 Subsections G and I NMAC. The operator shall notify the division when it has re-seed and when it has achieved successful re-vegetation.
Elm Ridge Exploration has restored, recontoured and re-seeded the excavated area in accordance with BLM standards as outlined in the Memorandum of Understanding (MOU).
 - 2) If soil samples exceed the regulatory standards stated above.
 - i. Elm Ridge Exploration, or a contractor acting on behalf of Elm Ridge Exploration, shall submit a Form C-141 with the laboratory results so that the division may review the results to determine if additional delineation is required in accordance with Paragraph (4) of Subsection C of 19.15.17.13 NMAC.
The five (5)-point composite sample of native soil beneath the earthen pit returned results below the 100 mg/kg TPH standard, the 0.2 mg/kg benzene standard, the 50 mg/kg BTEX standard and the 250 mg/kg total chloride standard, confirming that a release did NOT occur.

- 10) Elm Ridge Exploration will submit a closure report within 60 days following the earthen pit closure. The closure report will consist of a form C-144 with all supporting data and a form C-141 with all supporting data. The supporting data will include proof of closure notice to the surface owner and the OCD, confirmation sampling analytical results, a site diagram, soil backfilling and cover installation, re-vegetation rates, re-seeding techniques, and site reclamation photo documentation if applicable, along with all other information related to the onsite activities.

See attached C-144 Closure Form and attached Form C-141 Release Notification Form. Closure report has been submitted prior to September 28, 2009.

July 15, 2009

Project No. 03056-0241

Mr. Brad Jones
New Mexico Oil Conservation Division
1220 South St. Francis Street
Santa Fe, New Mexico 87505

Phone (505) 476-3487

RE: EARTH PIT CLOSURE NOTIFICATIONS AND PROPOSED CLOSURE SCHEDULE

Dear Mr. Jones,

Envirotech, Inc., on the behalf of Elm Ridge Exploration, would like to submit this notification to begin closure activities at the below mentioned locations. Attached to this document is a proposed closure schedule for the months of July and August of 2009. Should this schedule be approved by your office, closure activities will begin as scheduled, with surface owner notifications being made at a minimum of 24 hours prior to the beginning of closure activities and a maximum of one (1) week prior to closure activities. Additional closure notifications and schedules will be made prior to beginning any closure activities. This letter will act as the closure notification for the following sites:

BISTI COAL 12 001	BISTI COAL 21 001	BISTI COAL 4 COM 002
BISTI COAL 16 001	BISTI COAL 21 COM 002	BISTI COAL 5 COM 001
BISTI COAL 16 002	BISTI COAL 22 002	BISTI COAL 5K COM 002
BISTI COAL 17 COM 001	BISTI COAL 28 001	BISTI COAL 6 001
BISTI COAL 18 001	BISTI COAL 29 001	BISTI COAL 6 002
BISTI COAL 18 002	BISTI COAL 29 002	BISTI COAL 7 001
BISTI COAL 19 001	BISTI COAL 30 COM 001	BISTI COAL 7 COM 002
BISTI COAL 2 001	BISTI COAL 31 001	BISTI COAL 8 COM 001
BISTI COAL 2 002	BISTI COAL 4 001 PIT 1	BISTI COAL 8L COM 002
BISTI COAL 20 001	BISTI COAL 4 001 PIT 2	BISTI COAL 9 001
BISTI COAL 20 002		

Elm Ridge Exploration is proposing to close the earthen pits at the above listed well locations based on the attached closure schedule.

We appreciate the opportunity to be of service. Should you have any questions or require additional information, please contact our office at (505) 632-0615.

Respectfully Submitted,
ENVIROTECH, INC.

ELM RIDGE EXPLORATION

James McDaniel
Project Scientist
jmcdaniel@envirotech-inc.com

Amy Mackey
Administrative Manager
amackey1@elmridge.net

Attachments: Closure Schedule


[Home](#) | [Help](#) | [Sign In](#)
[Track & Confirm](#)[FAQs](#)

Track & Confirm

Search Results

Label/Receipt Number: **7007 1490 0000 5398 9244**Service(s): **Certified Mail™**Status: **Delivered**[Track & Confirm](#)

Enter Label/Receipt Number.

Your item was delivered at 10:14 AM on July 22, 2009 in FARMINGTON, NM 87401.

[Go >](#)

Notification Options

Track & Confirm by email

Get current event information or updates

[Site Map](#)[Customer Service](#)[Forms](#)[Gov't Service](#)

Copyright© 2009 USPS. All Rights Reserved.

No FEAR

U.S. Postal Service
CERTIFIED MAIL RECEIPT
 (Domestic Mail Only; No Insurance Coverage Provided)

For delivery information visit our website at www.usps.com**OFFICIAL USE**

Postage	\$ 1.39
Certified Fee	2.80
Return Receipt Fee (Endorsement Required)	2.30
Restricted Delivery Fee (Endorsement Required)	
Total Postage & Fees	\$ 5.98

Postmark
Here[away](#)

7007 1490 0000 5398 9244

Sent To **BUREAU OF LAND MGMT**
 Street, Apt. No., or PO Box No. **1335 LAPLATA HWY, STE A**
 City, State, ZIP+4 **FARM**

PS Form 3800, August 2006

See Reverse for Instructions

DER: COMPLETE THIS SECTION

Complete items 1, 2, and 3. Also complete item 4 if Restricted Delivery is desired. Write your name and address on the reverse so that we can return the card to you. Attach this card to the back of the mailpiece, on the front if space permits.

Addressee to:

Mark Kelly
 1335 LAPLATA HWY
 STE A
 FARMINGTON, NM
 87401

COMPLETE THIS SECTION ON DELIVERY

A. Signature *[Signature]* ☐ Agent ☐ Addressee
 B. Received by (Printed Name) *[Signature]* C. Date of Delivery
 D. Is delivery address different from item 1? ☐ Yes ☐ No
 If YES, enter delivery address below:

3. Service Type *Return Receipt Requested*
☐ Certified Mail ☐ Express Mail
☐ Registered ☐ Return Receipt for Merchandise
☐ Insured Mail ☐ C.O.D.

4. Restricted Delivery? (Extra Fee) ☐ Yes

Label Number
 Transfer from service label)

7007 1490 0000 5398 9244

PS Form 3811, February 2004

Domestic Return Receipt

102595-02-M-1540

Bisti Coal 12-1
 Bisti Coal 16-2
 Bisti Coal 16-1
~~Bisti Coal 17-1~~
 Bisti Coal 18-1



July 20, 2009

Project No. 03056-0161

Mr. Mark Kelly
Bureau of Land Management
1235 La Plata Highway, Suite A
Farmington, New Mexico 87401

Phone: (505) 599-8900

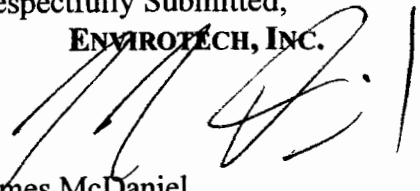
RE: BISTI COAL 17 COM 1 EARTH PIT CLOSURE NOTIFICATION

Dear Mr. Kelly,

Please accept this letter and attached Sundry Notice as the necessary surface owner notification for closure activities at the Bisti Coal 17 COM 1 well site, owned and operated by Elm Ridge Exploration. The Bisti Coal 17 COM 1 well site is located in Unit A, Section 17, Township 25N, Range 12W, San Juan County, New Mexico. Closure activities are scheduled to begin on July 27, 2009 and continue through July 31, 2009.

We appreciate the opportunity to be of service. If you have any questions or require additional information, please contact our office at (505) 632-0615.

Respectfully Submitted,
ENVIROTECH, INC.



James McDaniel
Project Scientist
jmcdaniel@envirotech-inc.com

Enclosure: Sundry Notice

Cc: Client File No. 03056

UNITED STATES
DEPARTMENT OF THE INTERIOR
BUREAU OF LAND MANAGEMENT

FORM APPROVED
OMB No. 1004-0137
Expires: July 31, 2010

SUNDRY NOTICES AND REPORTS ON WELLS
**Do not use this form for proposals to drill or to re-enter an
abandoned well. Use Form 3160-3 (APD) for such proposals.**

5. Lease Serial No.
SF-078058

6. If Indian, Allottee or Tribe Name

SUBMIT IN TRIPLICATE – Other instructions on page 2.

Type of Well

☐ Oil Well ☒ Gas Well ☐ Other

Name of Operator
Im Ridge Exploration

7. If Unit of CA/Agreement, Name and/or No.

8. Well Name and No.
Bisti Coal 17 COM 1

9. API Well No.
30-045-28379

1. Address
Box 156
Somfield, NM 87413

3b. Phone No. (include area code)
(505) 632-3476

10. Field and Pool or Exploratory Area

Location of Well (Footage, Sec., T., R., M., or Survey Description)
0 FNL 790 FEL, A-17-25N-12W, Lat. 36.40626° long. -108.12851

11. Country or Parish, State
San Juan County, NM

12. CHECK THE APPROPRIATE BOX(ES) TO INDICATE NATURE OF NOTICE, REPORT OR OTHER DATA

TYPE OF SUBMISSION	TYPE OF ACTION			
<input checked="" type="checkbox"/> Notice of Intent	<input type="checkbox"/> Acidize	<input type="checkbox"/> Deepen	<input type="checkbox"/> Production (Start/Resume)	<input type="checkbox"/> Water Shut-Off
<input type="checkbox"/> Subsequent Report	<input type="checkbox"/> Alter Casing	<input type="checkbox"/> Fracture Treat	<input type="checkbox"/> Reclamation	<input type="checkbox"/> Well Integrity
<input type="checkbox"/> Final Abandonment Notice	<input type="checkbox"/> Casing Repair	<input type="checkbox"/> New Construction	<input type="checkbox"/> Recomplete	<input checked="" type="checkbox"/> Other <u>Closure of an Earth</u>
	<input type="checkbox"/> Change Plans	<input type="checkbox"/> Plug and Abandon	<input type="checkbox"/> Temporarily Abandon	<u>Pit</u>
	<input type="checkbox"/> Convert to Injection	<input type="checkbox"/> Plug Back	<input type="checkbox"/> Water Disposal	

Describe Proposed or Completed Operation: Clearly state all pertinent details, including estimated starting date of any proposed work and approximate duration thereof. If the proposal is to deepen directionally or recompleat horizontally, give subsurface locations and measured and true vertical depths of all pertinent markers and zones. Attach the Bond under which the work will be performed or provide the Bond No. on file with BLM/BIA. Required subsequent reports must be filed within 30 days following completion of the involved operations. If the operation results in a multiple completion or recompleat in a new interval, a Form 3160-4 must be filed once testing has been completed. Final Abandonment Notices must be filed only after all requirements, including reclamation, have been completed and the operator has determined that the site is ready for final inspection.)

Im Ridge Exploration plans to begin closure activities for an earthen pit located at the above mentioned site. All formal notifications have been made. Closure activities are scheduled to begin on Monday, July 27, 2009 and last through July 31, 2009.

I hereby certify that the foregoing is true and correct. Name (Printed/Typed)
Amy Mackey

Title Administrative Manager

Signature

Date 07/20/2009

THIS SPACE FOR FEDERAL OR STATE OFFICE USE

Approved by

Title

Date

Conditions of approval, if any, are attached. Approval of this notice does not warrant or certify the applicant holds legal or equitable title to those rights in the subject lease which would be the applicant to conduct operations thereon.

Office

18 U.S.C. Section 1001 and Title 43 U.S.C. Section 1212, make it a crime for any person knowingly and willfully to make to any department or agency of the United States any false, fictitious or fraudulent statements or representations as to any matter within its jurisdiction.

(Instructions on page 2)

GENERAL INSTRUCTIONS

This form is designed for submitting proposals to perform certain well operations and reports of such operations when completed as indicated on Federal and Indian lands pursuant to applicable Federal law and regulations. Any necessary special instructions concerning the use of this form and the number of copies to be submitted, particularly with regard to local area or regional procedures and practices, are either shown below, will be issued by or may be obtained from the local Federal office.

SPECIFIC INSTRUCTIONS

Item 4 - Locations on Federal or Indian land should be described in accordance with Federal requirements. Consult the local Federal office for specific instructions.

Item 13 - Proposals to abandon a well and subsequent reports of abandonment should include such special information as is required by the local Federal office. In addition, such proposals and reports should include reasons for the abandonment; data on any former or present productive zones or other zones with present significant fluid contents not sealed off by cement or otherwise; depths (top and bottom) and method of placement of cement plugs; mud or other material placed below, between and above plugs; amount, size, method of parting of any casing, liner or tubing pulled and the depth to the top of any tubing left in the hole; method of closing top of well and date well site conditioned for final inspection looking for approval of the abandonment.

NOTICES

The Privacy Act of 1974 and the regulation in 43 CFR 2.48(d) provide that you be furnished the following information in connection with information required by this application.

AUTHORITY: 30 U.S.C. 181 et seq., 351 et seq., 25 U.S.C. 396; 43 CFR 3160.

PRINCIPAL PURPOSE: The information is used to: (1) Evaluate, when appropriate, approve applications, and report completion of subsequent well operations, on a Federal or Indian lease; and (2) document for administrative use, information for the management, disposal and use of National Resource lands and resources, such as: (a) evaluating the equipment and procedures to be used during a proposed subsequent well operation and reviewing the completed well operations for compliance with the approved plan; (b) requesting and granting approval to perform those actions covered by 43 CFR 3162.3-2, 3162.3-3, and 3162.3-4; (c) reporting the beginning or resumption of production, as required by 43 CFR 3162.4-1(c) and (d) analyzing future applications to drill or modify operations in light of data obtained and methods used.

ROUTINE USES: Information from the record and/or the record will be transferred to appropriate Federal, State, local or foreign agencies, when relevant to civil, criminal or regulatory investigations or prosecutions in connection with congressional inquiries or to consumer reporting agencies to facilitate collection of debts owed the Government.

EFFECT OF NOT PROVIDING THE INFORMATION: Filing of this notice and report and disclosure of the information is mandatory for those subsequent well operations specified in 43 CFR 3162.3-2, 3162.3-3, 3162.3-4.

The Paperwork Reduction Act of 1995 requires us to inform you that:

The BLM collects this information to evaluate proposed and/or completed subsequent well operations on Federal or Indian oil and gas leases.

Response to this request is mandatory.

The BLM would like you to know that you do not have to respond to this or any other Federal agency-sponsored information collection unless it displays a currently valid OMB control number.

BURDEN HOURS STATEMENT: Public reporting burden for this form is estimated to average 8 hours per response, including the time for reviewing instructions, gathering and maintaining data, and completing and reviewing the form. Direct comments regarding the burden estimate or any other aspect of this form to U.S. Department of the Interior, Bureau of Land Management (1004-0137), Bureau Information Collection Clearance Officer (WO-630), 1849 C St., N.W., Mail Stop 401 LS, Washington, D.C. 20240

ELM RIDGE EXPLORATION
BISTI COAL 17 COM 1
SEC. 17, TWN 25N, RGE 12W
PROJECT NO. 03056-0161

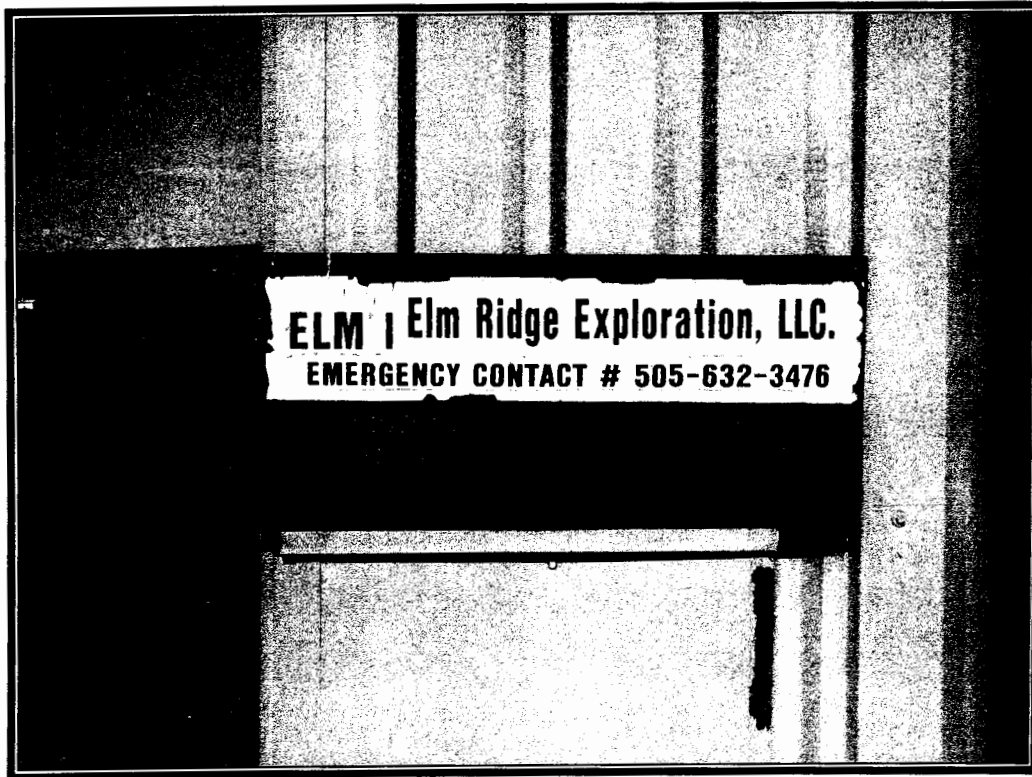


Photo 1: Bisti Coal 17 COM 1 Well Site

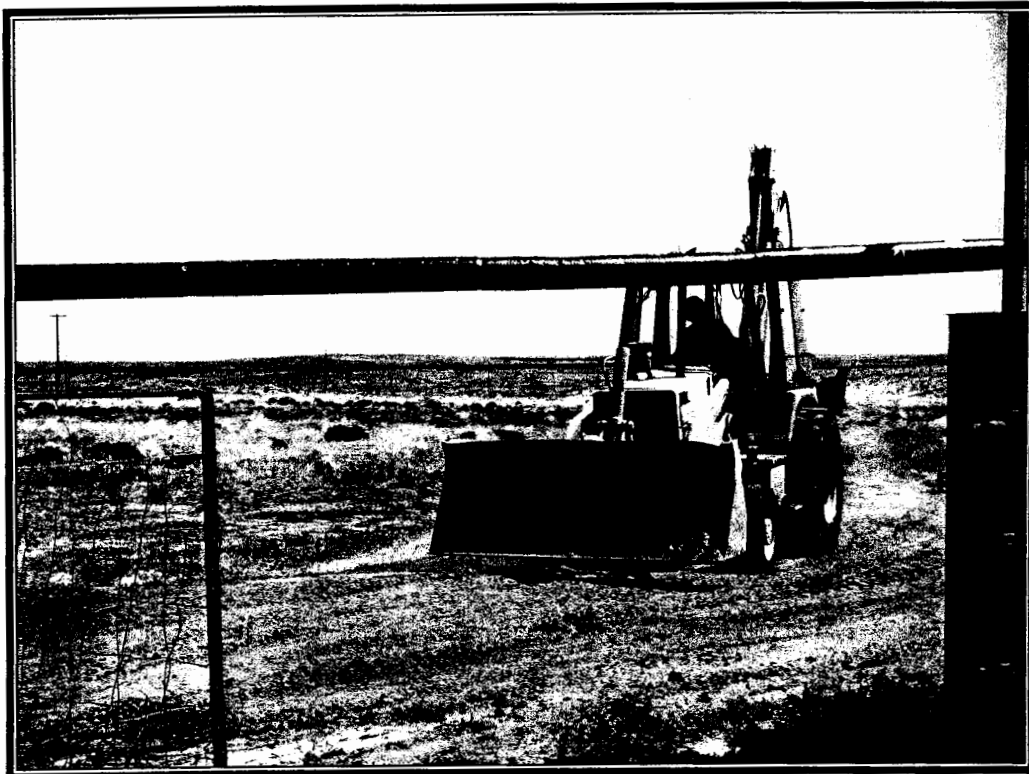


Photo 2: Excavated Area After Backfilling and Recontouring



**EPA METHOD 418.1
TOTAL PETROLEUM
HYDROCARBONS**

Client:	Elm Ridge Exploration	Project #:	03056-0161
Sample No.:	1	Date Reported:	8/21/2009
Sample ID:	5-point at 8.5'	Date Sampled:	7/28/2009
Sample Matrix:	Soil	Date Analyzed:	7/28/2009
Preservative:	Cool	Analysis Needed:	TPH-418.1
Condition:	Cool and Intact		

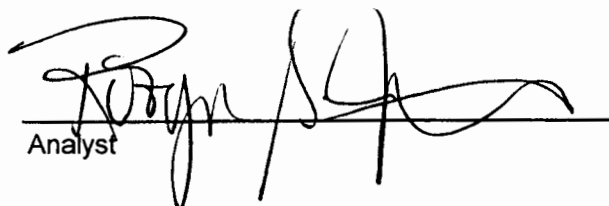
Parameter	Concentration (mg/kg)	Det. Limit (mg/kg)
Total Petroleum Hydrocarbons	60	5.0

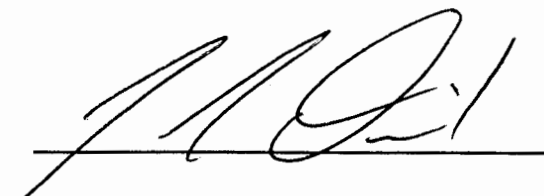
ND = Parameter not detected at the stated detection limit.

References: Method 418.1, Petroleum Hydrocarbons, Total Recoverable, Chemical Analysis of Water and Waste, USEPA Storet No. 4551, 1978.

Comments: **Bisti Coal 17 COM 1**

Instrument calibrated to 200 ppm standard. Zeroed before each sample


Analyst
Robyn S. Jones
Printed


James McDaniel
Printed



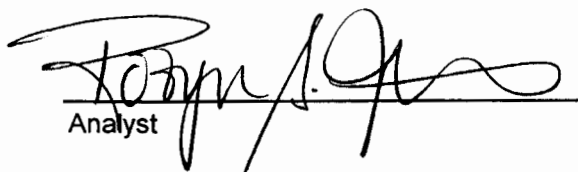
CONTINUOUS CALIBRATION
EPA METHOD 418.1
TOTAL PETROLEUM
HYDROCARBONS

Cal. Date: 28-Jul-09

Parameter	Standard Concentration mg/L	Concentration Reading mg/L
-----------	-----------------------------------	----------------------------------

TPH	100	
	200	197
	500	
	1000	

The accepted percent relative deviation (%RSD) of the calibration factor is less than 20% over the working range.


Analyst

Robyn S. Jones

Print Name


Review

James McDaniel

Print Name

8/21/09
Date

8/21/09
Date

**EPA METHOD 8021
AROMATIC VOLATILE ORGANICS**

Client:	Elmridge	Project #:	03056-0161
Sample ID:	Pit - 8.5' Below	Date Reported:	08-03-09
Laboratory Number:	51016	Date Sampled:	07-28-09
Chain of Custody:	7524	Date Received:	07-28-09
Sample Matrix:	Soil	Date Analyzed:	07-31-09
Preservative:	Cool	Date Extracted:	07-30-09
Condition:	Intact	Analysis Requested:	BTEX

Parameter	Concentration (ug/Kg)	Det. Limit (ug/Kg)
Benzene	ND	0.9
Toluene	ND	1.0
Ethylbenzene	ND	1.0
p,m-Xylene	ND	1.2
o-Xylene	ND	0.9
Total BTEX	ND	

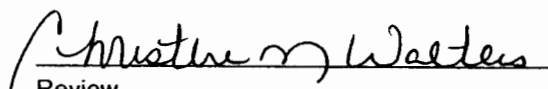
ND - Parameter not detected at the stated detection limit.

Surrogate Recoveries:	Parameter	Percent Recovery
	Fluorobenzene	98.0 %
	1,4-difluorobenzene	98.0 %
	Bromochlorobenzene	98.0 %

References: Method 5030B, Purge-and-Trap, Test Methods for Evaluating Solid Waste, SW-846, USEPA, December 1996.

Method 8021B, Aromatic Volatile Organics, Test Methods for Evaluating Solid Waste, SW-846, USEPA, December 1996.

Comments: Bisti Coal 17 Com 1


Analyst
Review

Client:	N/A	Project #:	N/A
Sample ID:	07-31-BT QA/QC	Date Reported:	08-03-09
Laboratory Number:	51004	Date Sampled:	N/A
Sample Matrix:	Soil	Date Received:	N/A
Preservative:	N/A	Date Analyzed:	07-31-09
Condition:	N/A	Analysis:	BTEX

Benzene	4.4517E+006	4.4606E+006	0.2%	ND	0.1
Toluene	4.1442E+006	4.1525E+006	0.2%	ND	0.1
Ethylbenzene	3.6898E+006	3.6972E+006	0.2%	ND	0.1
p,m-Xylene	9.5579E+006	9.5771E+006	0.2%	ND	0.1
o-Xylene	3.5394E+006	3.5465E+006	0.2%	ND	0.1

Benzene	2.1	2.0	4.8%	0 - 30%	0.9
Toluene	6.3	6.6	4.8%	0 - 30%	1.0
Ethylbenzene	4.5	4.9	8.9%	0 - 30%	1.0
p,m-Xylene	13.9	14.1	1.4%	0 - 30%	1.2
o-Xylene	8.4	8.6	2.4%	0 - 30%	0.9

Benzene	2.1	50.0	50.6	97.1%	39 - 150
Toluene	6.3	50.0	54.8	97.3%	46 - 148
Ethylbenzene	4.5	50.0	53.0	97.2%	32 - 160
p,m-Xylene	13.9	100	112	98.7%	46 - 148
o-Xylene	8.4	50.0	56.9	97.4%	46 - 148

ND - Parameter not detected at the stated detection limit.

References: Method 5030B, Purge-and-Trap, Test Methods for Evaluating Solid Waste, SW-846, USEPA, December 1996.
Method 8021B, Aromatic and Halogenated Volatiles by Gas Chromatography Using Photoionization and/or Electrolytic Conductivity Detectors, SW-846, USEPA December 1996.

Comments: QA/QC for Samples 51004 and 51013 - 51021.

Analyst

Review

Client:	Elmridge	Project #:	03056-0161
Sample ID:	Pit - 8.5' Below	Date Reported:	08-03-09
Lab ID#:	51016	Date Sampled:	07-28-09
Sample Matrix:	Soil	Date Received:	07-28-09
Preservative:	Cool	Date Analyzed:	07-30-09
Condition:	Intact	Chain of Custody:	7524

Parameter

Concentration (mg/Kg)

Total Chloride

90

Reference: U.S.E.P.A., 4500B, "Methods for Chemical Analysis of Water and Wastes", 1983.
Standard Methods For The Examination of Water And Waste Water", 18th ed., 1992.

Comments: Bisti Coal 17 Com 1.

Analyst

Review

[illegible]

ENO: 1 OF 1



ENVIRONMENTAL SPECIALIST:

R Jones

LAT: 36.406266

LONG: -108.128514

STARTED: 7/28/09

FINISHED: 7/28/09

FIELD REPORT: BGT / PIT CLOSURE VERIFICATION

LOCATION: NAME: Bisti Coal 1700 WELL #: 1 TEMP PIT: PERMANENT PIT: X BGT:
LOCAL ADDRESS: UNIT: A SEC: 17 TWP: 25N RNG: 12W PM: N14PM
FOOTAGE: 790' FILL 790' FILL CNTY: San Juan ST: NM
ESTIMATION APPROX: 60 FT. X 5 FT. X 60 FT. DEEP CUBIC YARDAGE: ~3 yds
WASTEWATER FACILITY: Envirotech Landfarm #2 REMEDIATION METHOD: Landfarm
OWNER: Fed API: 3004528379 BGT / PIT VOLUME: NA
CONSTRUCTION MATERIAL: Earth DOUBLE-WALLED, WITH LEAK DETECTION: NA
LOCATION APPROXIMATELY: 50 FT. 310' FROM WELLHEAD

DEPTH TO GROUNDWATER:

TEMPORARY PIT - GROUNDWATER 50-100 FEET DEEP

BENZENE ≤ 0.2 mg/kg, BTEX ≤ 50 mg/kg, GRO & DRO FRACTION (8015) ≤ 500 mg/kg, TPH (418.1) ≤ 2500 mg/kg, CHLORIDES ≤ 500 mg/kg

TEMPORARY PIT - GROUNDWATER ≥ 100 FEET DEEP

BENZENE ≤ 0.2 mg/kg, BTEX ≤ 50 mg/kg, GRO & DRO FRACTION (8015) ≤ 500 mg/kg, TPH (418.1) ≤ 2500 mg/kg, CHLORIDES ≤ 1000 mg/kg

PERMANENT PIT OR BGT

BENZENE ≤ 0.2 mg/kg, BTEX ≤ 50 mg/kg, TPH (418.1) ≤ 100 mg/kg, CHLORIDES ≤ 250 mg/kg

FIELD 418.1 ANALYSIS

TIME	SAMPLE ID	LAB NO.	WEIGHT (g)	mL FREON	DILUTION	READING	CALC. (mg/kg)
9:02	200 STD	-	-	-	-	197	-
11:00	Spt @ 2.5'	1	5.0	20	4	15	60
		2					
		3					
		4					
		5					
		6					

PERIMETER

FIELD CHLORIDES RESULTS

PROFILE

	SAMPLE ID	READING	CALC. (mg/kg)
	Spt @ 2.5'	5.3 (HR)	1744
	Spt @ 4.0'	5.0 (HR)	1607
	Spt @ 6.0'	6.4	407
	Spt @ 7.0'	5.8	326
	Spt @ 8.5'	4.2	178
PID RESULTS			
SAMPLE ID		RESULTS (ppm)	
Spt @ 2.5'		0.3	
Spt @ 8.5'		0.0	

LAB SAMPLES

FILE ID	ANALYSIS	RESULTS
	BENZENE	
	BTEX	
	GRO & DRO	
	CHLORIDES	

NOTES:

3 yards

WORKORDER #

WHO ORDERED



33926

0161

DATE 7-28-00 JOB# 02050-000

[illegible]

"I certify the material hauled from the above location has not been added to or mixed with, and is the same material received from the above mentioned Generator, and that no additional materials have been added."

NAME John McKinney COMPANY Full-time SIGNATURE [Signature]

COMPANY CONTACT MMK PHONE 327-3211 DATE 7-28-09

* District I
1625 N. French Dr., Hobbs, NM 88240
District II
1301 W. Grand Avenue, Artesia, NM 88210
District III
1000 Rio Brazos Road, Aztec, NM 87410
District IV
1220 S. St. Francis Dr., Santa Fe, NM 87505

State of New Mexico
Energy Minerals and Natural Resources
Department
Oil Conservation Division
1220 South St. Francis Dr.
Santa Fe, NM 87505

Form C-144
July 21, 2008

For temporary pits, closed-loop systems, and below-grade tanks, submit to the appropriate NMOCD District Office.
For permanent pits and exceptions submit to the Santa Fe Environmental Bureau office and provide a copy to the appropriate NMOCD District Office.

**Pit, Closed-Loop System, Below-Grade Tank, or
Proposed Alternative Method Permit or Closure Plan Application**

- Type of action: ☐ Permit of a pit, closed-loop system, below-grade tank, or proposed alternative method
☒ Closure of a pit, closed-loop system, below-grade tank, or proposed alternative method
☐ Modification to an existing permit
☐ Closure plan only submitted for an existing permitted or non-permitted pit, closed-loop system, below-grade tank, or proposed alternative method

Instructions: Please submit one application (Form C-144) per individual pit, closed-loop system, below-grade tank or alternative request

Please be advised that approval of this request does not relieve the operator of liability should operations result in pollution of surface water, ground water or the environment. Nor does approval relieve the operator of its responsibility to comply with any other applicable governmental authority's rules, regulations or ordinances.

Operator: Elm Ridge Exploration OGRID #: 149052
Address: P.O. Box 156; Bloomfield, NM 87413
Facility or well name: Bisti Coal 17 COM 1
API Number: 3004528379 OCD Permit Number: _____
U/L or Qtr/Qtr A Section 17 Township 25N Range 12W County: San Juan
Center of Proposed Design: Latitude 36.406268 Longitude -108.128514 NAD: ☐ 1927 ☒ 1983
Surface Owner: ☒ Federal ☐ State ☐ Private ☐ Tribal Trust or Indian Allotment

2. ☒ **Pit:** Subsection F or G of 19.15.17.11 NMAC **Ceased emptying into prior to June 16, 2008.**
Temporary: ☐ Drilling ☐ Workover
☒ Permanent ☐ Emergency ☐ Cavitation ☐ P&A
☐ Lined ☒ Unlined Liner type: Thickness _____ mil ☐ LLDPE ☐ HDPE ☐ PVC ☐ Other _____
☐ String-Reinforced
Liner Seams: ☐ Welded ☐ Factory ☐ Other _____ Volume: _____ bbl Dimensions: L 14' x W 15' x D 5.5'

3. ☐ **Closed-loop System:** Subsection H of 19.15.17.11 NMAC
Type of Operation: ☐ P&A ☐ Drilling a new well ☐ Workover or Drilling (Applies to activities which require prior approval of a permit or notice of intent)
☐ Drying Pad ☐ Above Ground Steel Tanks ☐ Haul-off Bins ☐ Other _____
☐ Lined ☐ Unlined Liner type: Thickness _____ mil ☐ LLDPE ☐ HDPE ☐ PVC ☐ Other _____
Liner Seams: ☐ Welded ☐ Factory ☐ Other _____

4. ☐ **Below-grade tank:** Subsection I of 19.15.17.11 NMAC
Volume: _____ bbl Type of fluid: _____
Tank Construction material:
☐ Secondary containment with leak detection ☐ Visible sidewalls, liner, 6-inch lift and automatic overflow shut-off
☐ Visible sidewalls and liner ☐ Visible sidewalls only ☐ Other _____
Liner type: Thickness _____ mil ☐ HDPE ☐ PVC ☐ Other _____

5. ☐ **Alternative Method:**
Submittal of an exception request is required. Exceptions must be submitted to the Santa Fe Environmental Bureau office for consideration of approval.

6.

Fencing: Subsection D of 19.15.17.11 NMAC (*Applies to permanent pits, temporary pits, and below-grade tanks*)

- ☐ Chain link, six feet in height, two strands of barbed wire at top (*Required if located within 1000 feet of a permanent residence, school, hospital, institution or church*)
- ☐ Four foot height, four strands of barbed wire evenly spaced between one and four feet
- ☒ Alternate. Please specify 4' tall hogwire fencing with pipe railing

7.

Netting: Subsection E of 19.15.17.11 NMAC (*Applies to permanent pits and permanent open top tanks*)

- ☐ Screen ☐ Netting ☐ Other _____
- ☐ Monthly inspections (If netting or screening is not physically feasible)

8.

Signs: Subsection C of 19.15.17.11 NMAC

- ☐ 12"x 24", 2" lettering, providing Operator's name, site location, and emergency telephone numbers
- ☒ Signed in compliance with 19.15.3.103 NMAC

9.

Administrative Approvals and Exceptions:

Justifications and/or demonstrations of equivalency are required. Please refer to 19.15.17 NMAC for guidance.

Please check a box if one or more of the following is requested, if not leave blank:

- ☐ Administrative approval(s): Requests must be submitted to the appropriate division district or the Santa Fe Environmental Bureau office for consideration of approval.
- ☐ Exception(s): Requests must be submitted to the Santa Fe Environmental Bureau office for consideration of approval.

10.

Siting Criteria (regarding permitting): 19.15.17.10 NMAC

Instructions: The applicant must demonstrate compliance for each siting criteria below in the application. Recommendations of acceptable source material are provided below. Requests regarding changes to certain siting criteria may require administrative approval from the appropriate district office or may be considered an exception which must be submitted to the Santa Fe Environmental Bureau office for consideration of approval. Applicant must attach justification for request. Please refer to 19.15.17.10 NMAC for guidance. Siting criteria does not apply to drying pads or above-grade tanks associated with a closed-loop system.

Ground water is less than 50 feet below the bottom of the temporary pit, permanent pit, or below-grade tank.	<input type="checkbox"/> Yes <input type="checkbox"/> No
- NM Office of the State Engineer - iWATERS database search; USGS; Data obtained from nearby wells	
Within 300 feet of a continuously flowing watercourse, or 200 feet of any other significant watercourse or lakebed, sinkhole, or playa lake (measured from the ordinary high-water mark).0.	<input type="checkbox"/> Yes <input type="checkbox"/> No
- Topographic map; Visual inspection (certification) of the proposed site	
Within 300 feet from a permanent residence, school, hospital, institution, or church in existence at the time of initial application.	<input type="checkbox"/> Yes <input type="checkbox"/> No
- (<i>Applies to temporary, emergency, or cavitation pits and below-grade tanks</i>) (<input type="checkbox"/> NA
Within 1000 feet from a permanent residence, school, hospital, institution, or church in existence at the time of initial application.	
(<i>Applies to permanent pits</i>)	
- Visual inspection (certification) of the proposed site; Aerial photo; Satellite image	
Within 500 horizontal feet of a private, domestic fresh water well or spring that less than five households use for domestic or stock watering purposes, or within 1000 horizontal feet of any other fresh water well or spring, in existence at the time of initial application.	<input type="checkbox"/> Yes <input type="checkbox"/> No
- NM Office of the State Engineer - iWATERS database search; Visual inspection (certification) of the proposed site	<input type="checkbox"/> NA
Within incorporated municipal boundaries or within a defined municipal fresh water well field covered under a municipal ordinance adopted pursuant to NMSA 1978, Section 3-27-3, as amended.	<input type="checkbox"/> Yes <input type="checkbox"/> No
Within 500 feet of a wetland.	
Within the area overlying a subsurface mine.	<input type="checkbox"/> Yes <input type="checkbox"/> No
Within an unstable area.	
- Engineering measures incorporated into the design; NM Bureau of Geology & Mineral Resources; USGS; NM Geological Society; Topographic map	<input type="checkbox"/> Yes <input type="checkbox"/> No
Within a 100-year floodplain.	
- FEMA map	<input type="checkbox"/> Yes <input type="checkbox"/> No
	<input type="checkbox"/> Yes <input type="checkbox"/> No
	<input type="checkbox"/> Yes <input type="checkbox"/> No

11.

Temporary Pits, Emergency Pits, and Below-grade Tanks Permit Application Attachment Checklist: Subsection B of 19.15.17.9 NMAC**Instructions:** Each of the following items must be attached to the application. Please indicate, by a check mark in the box, that the documents are attached.

- ☐ Hydrogeologic Report (Below-grade Tanks) - based upon the requirements of Paragraph (4) of Subsection B of 19.15.17.9 NMAC
☐ Hydrogeologic Data (Temporary and Emergency Pits) - based upon the requirements of Paragraph (2) of Subsection B of 19.15.17.9 NMAC
☐ Siting Criteria Compliance Demonstrations - based upon the appropriate requirements of 19.15.17.10 NMAC
☐ Design Plan - based upon the appropriate requirements of 19.15.17.11 NMAC
☐ Operating and Maintenance Plan - based upon the appropriate requirements of 19.15.17.12 NMAC
☐ Closure Plan (Please complete Boxes 14 through 18, if applicable) - based upon the appropriate requirements of Subsection C of 19.15.17.9 NMAC and 19.15.17.13 NMAC
☐ Previously Approved Design (attach copy of design) API Number: _____ or Permit Number: _____

12.

Closed-loop Systems Permit Application Attachment Checklist: Subsection B of 19.15.17.9 NMAC**Instructions:** Each of the following items must be attached to the application. Please indicate, by a check mark in the box, that the documents are attached.

- ☐ Geologic and Hydrogeologic Data (only for on-site closure) - based upon the requirements of Paragraph (3) of Subsection B of 19.15.17.9 NMAC
☐ Siting Criteria Compliance Demonstrations (only for on-site closure) - based upon the appropriate requirements of 19.15.17.10 NMAC
☐ Design Plan - based upon the appropriate requirements of 19.15.17.11 NMAC
☐ Operating and Maintenance Plan - based upon the appropriate requirements of 19.15.17.12 NMAC
☐ Closure Plan (Please complete Boxes 14 through 18, if applicable) - based upon the appropriate requirements of Subsection C of 19.15.17.9 NMAC and 19.15.17.13 NMAC
☐ Previously Approved Design (attach copy of design) API Number: _____
☐ Previously Approved Operating and Maintenance Plan API Number: _____ (Applies only to closed-loop system that use above ground steel tanks or haul-off bins and propose to implement waste removal for closure)

13.

Permanent Pits Permit Application Checklist: Subsection B of 19.15.17.9 NMAC**Instructions:** Each of the following items must be attached to the application. Please indicate, by a check mark in the box, that the documents are attached.

- ☐ Hydrogeologic Report - based upon the requirements of Paragraph (1) of Subsection B of 19.15.17.9 NMAC
☐ Siting Criteria Compliance Demonstrations - based upon the appropriate requirements of 19.15.17.10 NMAC
☐ Climatological Factors Assessment
☐ Certified Engineering Design Plans - based upon the appropriate requirements of 19.15.17.11 NMAC
☐ Dike Protection and Structural Integrity Design - based upon the appropriate requirements of 19.15.17.11 NMAC
☐ Leak Detection Design - based upon the appropriate requirements of 19.15.17.11 NMAC
☐ Liner Specifications and Compatibility Assessment - based upon the appropriate requirements of 19.15.17.11 NMAC
☐ Quality Control/Quality Assurance Construction and Installation Plan
☐ Operating and Maintenance Plan - based upon the appropriate requirements of 19.15.17.12 NMAC
☐ Freeboard and Overtopping Prevention Plan - based upon the appropriate requirements of 19.15.17.11 NMAC
☐ Nuisance or Hazardous Odors, including H₂S, Prevention Plan
☐ Emergency Response Plan
☐ Oil Field Waste Stream Characterization
☐ Monitoring and Inspection Plan
☐ Erosion Control Plan
☐ Closure Plan - based upon the appropriate requirements of Subsection C of 19.15.17.9 NMAC and 19.15.17.13 NMAC

14.

Proposed Closure: 19.15.17.13 NMAC**Instructions:** Please complete the applicable boxes, Boxes 14 through 18, in regards to the proposed closure plan.

- Type: ☐ Drilling ☐ Workover ☐ Emergency ☐ Cavitation ☐ P&A ☒ Permanent Pit ☐ Below-grade Tank ☐ Closed-loop System
☐ Alternative
 Proposed Closure Method: ☒ Waste Excavation and Removal
☐ Waste Removal (Closed-loop systems only)
☐ On-site Closure Method (Only for temporary pits and closed-loop systems)
☐ In-place Burial ☐ On-site Trench Burial
☐ Alternative Closure Method (Exceptions must be submitted to the Santa Fe Environmental Bureau for consideration)

15.

Waste Excavation and Removal Closure Plan Checklist: (19.15.17.13 NMAC) **Instructions:** Each of the following items must be attached to the closure plan. Please indicate, by a check mark in the box, that the documents are attached.

- ☒ Protocols and Procedures - based upon the appropriate requirements of 19.15.17.13 NMAC
☒ Confirmation Sampling Plan (if applicable) - based upon the appropriate requirements of Subsection F of 19.15.17.13 NMAC
☒ Disposal Facility Name and Permit Number (for liquids, drilling fluids and drill cuttings)
☒ Soil Backfill and Cover Design Specifications - based upon the appropriate requirements of Subsection H of 19.15.17.13 NMAC
☒ Re-vegetation Plan - based upon the appropriate requirements of Subsection I of 19.15.17.13 NMAC
☒ Site Reclamation Plan - based upon the appropriate requirements of Subsection G of 19.15.17.13 NMAC

16.

Waste Removal Closure For Closed-loop Systems That Utilize Above Ground Steel Tanks or Haul-off Bins Only: (19.15.17.13.D NMAC)

Instructions: Please identify the facility or facilities for the disposal of liquids, drilling fluids and drill cuttings. Use attachment if more than two facilities are required.

Disposal Facility Name: _____ Disposal Facility Permit Number: _____

Disposal Facility Name: _____ Disposal Facility Permit Number: _____

Will any of the proposed closed-loop system operations and associated activities occur on or in areas that *will not* be used for future service and operations?

☐ Yes (If yes, please provide the information below) ☐ No

Required for impacted areas which will not be used for future service and operations:

☐ Soil Backfill and Cover Design Specifications - based upon the appropriate requirements of Subsection H of 19.15.17.13 NMAC

☐ Re-vegetation Plan - based upon the appropriate requirements of Subsection I of 19.15.17.13 NMAC

☐ Site Reclamation Plan - based upon the appropriate requirements of Subsection G of 19.15.17.13 NMAC

17.

Siting Criteria (regarding on-site closure methods only): 19.15.17.10 NMAC

Instructions: Each siting criteria requires a demonstration of compliance in the closure plan. Recommendations of acceptable source material are provided below. Requests regarding changes to certain siting criteria may require administrative approval from the appropriate district office or may be considered an exception which must be submitted to the Santa Fe Environmental Bureau office for consideration of approval. Justifications and/or demonstrations of equivalency are required. Please refer to 19.15.17.10 NMAC for guidance.

Ground water is less than 50 feet below the bottom of the buried waste.

- NM Office of the State Engineer - iWATERS database search; USGS; Data obtained from nearby wells

☐ Yes ☐ No
☐ NA

Ground water is between 50 and 100 feet below the bottom of the buried waste

- NM Office of the State Engineer - iWATERS database search; USGS; Data obtained from nearby wells

☐ Yes ☐ No
☐ NA

Ground water is more than 100 feet below the bottom of the buried waste.

- NM Office of the State Engineer - iWATERS database search; USGS; Data obtained from nearby wells

☐ Yes ☐ No
☐ NA

Within 300 feet of a continuously flowing watercourse, or 200 feet of any other significant watercourse or lakebed, sinkhole, or playa lake (measured from the ordinary high-water mark).

- Topographic map; Visual inspection (certification) of the proposed site

☐ Yes ☐ No

Within 300 feet from a permanent residence, school, hospital, institution, or church in existence at the time of initial application.

- Visual inspection (certification) of the proposed site; Aerial photo; Satellite image

☐ Yes ☐ No

Within 500 horizontal feet of a private, domestic fresh water well or spring that less than five households use for domestic or stock watering purposes, or within 1000 horizontal feet of any other fresh water well or spring, in existence at the time of initial application.

- NM Office of the State Engineer - iWATERS database; Visual inspection (certification) of the proposed site

☐ Yes ☐ No

Within incorporated municipal boundaries or within a defined municipal fresh water well field covered under a municipal ordinance adopted pursuant to NMSA 1978, Section 3-27-3, as amended.

- Written confirmation or verification from the municipality; Written approval obtained from the municipality

☐ Yes ☐ No

Within 500 feet of a wetland.

- US Fish and Wildlife Wetland Identification map; Topographic map; Visual inspection (certification) of the proposed site

☐ Yes ☐ No

Within the area overlying a subsurface mine.

- Written confirmation or verification or map from the NM EMNRD-Mining and Mineral Division

☐ Yes ☐ No

Within an unstable area.

- Engineering measures incorporated into the design; NM Bureau of Geology & Mineral Resources; USGS; NM Geological Society; Topographic map

☐ Yes ☐ No

Within a 100-year floodplain.

- FEMA map

☐ Yes ☐ No

18.

On-Site Closure Plan Checklist: (19.15.17.13 NMAC) **Instructions:** Each of the following items must be attached to the closure plan. Please indicate, by a check mark in the box, that the documents are attached.

☐ Siting Criteria Compliance Demonstrations - based upon the appropriate requirements of 19.15.17.10 NMAC

☐ Proof of Surface Owner Notice - based upon the appropriate requirements of Subsection F of 19.15.17.13 NMAC

☐ Construction/Design Plan of Burial Trench (if applicable) based upon the appropriate requirements of 19.15.17.11 NMAC

☐ Construction/Design Plan of Temporary Pit (for in-place burial of a drying pad) - based upon the appropriate requirements of 19.15.17.11 NMAC

☐ Protocols and Procedures - based upon the appropriate requirements of 19.15.17.13 NMAC

☐ Confirmation Sampling Plan (if applicable) - based upon the appropriate requirements of Subsection F of 19.15.17.13 NMAC

☐ Waste Material Sampling Plan - based upon the appropriate requirements of Subsection F of 19.15.17.13 NMAC

☐ Disposal Facility Name and Permit Number (for liquids, drilling fluids and drill cuttings or in case on-site closure standards cannot be achieved)

☐ Soil Cover Design - based upon the appropriate requirements of Subsection H of 19.15.17.13 NMAC

☐ Re-vegetation Plan - based upon the appropriate requirements of Subsection I of 19.15.17.13 NMAC

☐ Site Reclamation Plan - based upon the appropriate requirements of Subsection G of 19.15.17.13 NMAC

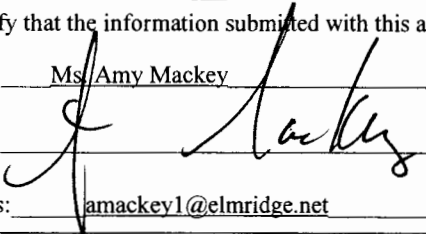
19.

Operator Application Certification:

I hereby certify that the information submitted with this application is true, accurate and complete to the best of my knowledge and belief.

Name (Print): Ms. Amy Mackey

Title: Administrative Manager

Signature: 

Date: 3/2/09

E-mail address: amackey1@elmridge.net

Telephone: (505) 632-3476 Ext.201

20.

OCD Approval: ☐ Permit Application (including closure plan) ☒ Closure Plan (only) ☐ OCD Conditions (see attachment)

OCD Representative Signature: 

Approval Date: 2/10/10

Title: Environmental Engineer

OCD Permit Number:

21.

Closure Report (required within 60 days of closure completion): Subsection K of 19.15.17.13 NMAC

Instructions: Operators are required to obtain an approved closure plan prior to implementing any closure activities and submitting the closure report. The closure report is required to be submitted to the division within 60 days of the completion of the closure activities. Please do not complete this section of the form until an approved closure plan has been obtained and the closure activities have been completed.

☐ Closure Completion Date:

22.

Closure Method:

☐ Waste Excavation and Removal ☐ On-Site Closure Method ☐ Alternative Closure Method ☐ Waste Removal (Closed-loop systems only)
☐ If different from approved plan, please explain.

23.

Closure Report Regarding Waste Removal Closure For Closed-loop Systems That Utilize Above Ground Steel Tanks or Haul-off Bins Only:

Instructions: Please indentify the facility or facilities for where the liquids, drilling fluids and drill cuttings were disposed. Use attachment if more than two facilities were utilized.

Disposal Facility Name: _____

Disposal Facility Permit Number: _____

Disposal Facility Name: _____

Disposal Facility Permit Number: _____

Were the closed-loop system operations and associated activities performed on or in areas that will not be used for future service and operations?

☐ Yes (If yes, please demonstrate compliance to the items below) ☐ No

Required for impacted areas which will not be used for future service and operations:

- ☐ Site Reclamation (Photo Documentation)
☐ Soil Backfilling and Cover Installation
☐ Re-vegetation Application Rates and Seeding Technique

24.

Closure Report Attachment Checklist: Instructions: Each of the following items must be attached to the closure report. Please indicate, by a check mark in the box, that the documents are attached.

- ☐ Proof of Closure Notice (surface owner and division)
☐ Proof of Deed Notice (required for on-site closure)
☐ Plot Plan (for on-site closures and temporary pits)
☐ Confirmation Sampling Analytical Results (if applicable)
☐ Waste Material Sampling Analytical Results (required for on-site closure)
☐ Disposal Facility Name and Permit Number
☐ Soil Backfilling and Cover Installation
☐ Re-vegetation Application Rates and Seeding Technique
☐ Site Reclamation (Photo Documentation)

On-site Closure Location: Latitude _____ Longitude _____ NAD: ☐ 1927 ☐ 1983

25.

Operator Closure Certification:

I hereby certify that the information and attachments submitted with this closure report is true, accurate and complete to the best of my knowledge and belief. I also certify that the closure complies with all applicable closure requirements and conditions specified in the approved closure plan.

Name (Print): _____

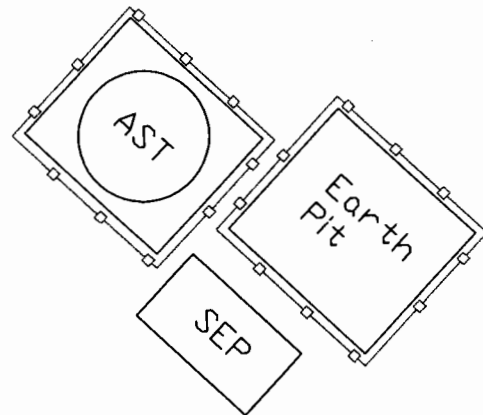
Title: _____

Signature: _____

Date: _____

E-mail address: _____

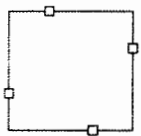
Telephone: _____



PUMP
JACK



LEGEND



4' Tall Hogwire
Fencing



Berm



Well Head

SITE MAP ELM RIDGE EXPLORATION BISTI COAL 17 COM 1 SEC 17 TWN 25N RGE 12W SAN JUAN COUNTY, NEW MEXICO

SCALE: NTS

PROJECT N003056-0136

FIGURE NO. A

REV

REVISIONS

NO.	DATE	BY	DESCRIPTION
-----	------	----	-------------

MAP DRWN	JPM		
----------	-----	--	--

1/16/09

BASE DRWN

ENVIRONMENTAL SCIENTISTS & ENGINEERS
ENVIROTECH

EARTHEN PIT CLOSURE PLAN

SITE NAME:

**BISTI COAL 17 COM 1
UNIT LETTER A, SECTION 17, TOWNSHIP 25N, RANGE 12W
SAN JUAN COUNTY, NEW MEXICO
LATITUDE 36.406268 LONGITUDE -108.128514**

SUBMITTED TO:

**MR. WAYNE PRICE
NEW MEXICO OIL CONSERVATION DIVISION
1220 SOUTH ST. FRANCIS DRIVE
SANTA FE, NEW MEXICO 87505
(505) 476-3490**

SUBMITTED BY:

**MS. AMY MACKEY
ELM RIDGE EXPLORATION
PO BOX 156
BLOOMFIELD, NEW MEXICO 87413
(505) 632-3476**

FEBRUARY 2009

**EARTHEN PIT CLOSURE PLAN
ELM RIDGE EXPLORATION
BISTI COAL 17 COM 1
SAN JUAN COUNTY, NEW MEXICO**

TABLE OF CONTENTS

<u>INTRODUCTION</u>	1
<u>SCOPE OF CLOSURE ACTIVITIES</u>	1
<u>REPORTING</u>	3

INTRODUCTION

Elm Ridge Exploration would like to submit a closure plan for the earthen pit at the Bisti Coal 17 COM 1 well site located in the NE ¼ NE ¼ of Section 17, Township 25N, Range 12W, San Juan County, New Mexico. This closure plan has been prepared in conformance with the closure requirements of 19.15.17.13 NMAC.

SCOPE OF CLOSURE ACTIVITIES

The purpose of this closure plan is to provide the details of activities involved in the closure of the permanent unlined pit at the Bisti Coal 17 COM 1 well site. The following scope of closure activities has been designed to meet this objective:

- 1) Elm Ridge Exploration, or a contractor acting on behalf of Elm Ridge Exploration, will close all former earthen pits prior to the closure date agreed upon by the New Mexico Oil Conservation Division of December 31, 2009.
- 2) In accordance with Subsection A of 19.15.17.13 NMAC, Elm Ridge Exploration, or a contractor acting on behalf of Elm Ridge Exploration, will close any earthen pits at a date the division requires because of imminent danger to fresh water, public health or the environment.
- 3) Elm Ridge Exploration, or a contractor acting on behalf of Elm Ridge Exploration, will close earthen pits first which seem to pose a greater risk to fresh water, public health or the environment. This will be determined by the locations proximity to surface water sources and distance to groundwater.
- 4) No less than 60 days prior to any earthen pit closure activities, Elm Ridge Exploration or a contractor acting on behalf of Elm Ridge Exploration will provide written notification to the Santa Fe NMOCD office as well as a schedule of on-site activities, as in accordance with 19.15.17.13 Subsection J Paragraph (3) NMAC.
- 5) No less than 24 hours and no greater than one (1) week prior to earthen pit removal Elm Ridge Exploration or a contractor acting on behalf of Elm Ridge Exploration will provide written notification to the appropriate surface owner as well as a schedule of on-site activities, as in accordance with 19.15.17.13 Subsection J Paragraph (1) NMAC. Elm Ridge Exploration, or a contractor acting on behalf of Elm Ridge Exploration, will notify the surface owner by certified mail, return receipt requested, that the operator plans to close a earthen pit. The return receipt will be used to ensure that the surface owner has received written notification no less than 24 hours and no greater than one (1) week prior to the beginning of BGT closure activities. Evidence of mailing of the notice to the address of the surface owner shown in the county tax records is sufficient to demonstrate compliance with this requirement. Closure activities that will take place on tribal land will have notifications sent by certified mail, return receipt requested, to the appropriate tribal office. Elm Ridge Exploration, or a contractor acting on behalf of Elm Ridge Exploration, will notify the Bureau of Land Management (BLM) of closure activities for wells located on federal land per a Sundry Notice, as in accordance with 19.15.17.13 Subsection J Paragraph (1) NMAC. All notices will be sent in such a way that the surface owner received notice at least 24 hours prior to the beginning of closure activities.

- 6) Elm Ridge Exploration, or a contractor acting on behalf of Elm Ridge Exploration, will remove all liquids, and/or sludge, to visual extents, prior to closure sampling. Material will be disposed of at Envirotech's Landfarm #2, Permit # NM-01-0011, TNT Environmental Inc. Landfarm, Permit # NM-01-0008, Industrial Ecosystems Inc. (IEI) Landfarm, Permit # NM-01-0010B or Basin Disposal, Permit # NM-01-0005, depending on the consistence of the material removed, as in accordance with 19.15.17.13 Subsection C Paragraph (1) NMAC .
- 7) Elm Ridge Exploration, or a contractor acting on behalf of Elm Ridge Exploration, will remove all on-site equipment associated with this earthen pit unless it is required for some other purpose, as in accordance with 19.15.17.13 Subsection C Paragraph (2) NMAC. The equipment that meets the requirements of 19.15.9.712 Subsection A NMAC and 19.15.9.712 Subsection D Paragraph (1) will be disposed of at San Juan County Regional Landfill. Waste that is classified by 19.15.9.712 Subsection D Paragraph (2) will be sampled accordingly to determine acceptance of this material at the San Juan County Regional Landfill. Waste that is unable to be accepted at the San Juan County Regional Landfill will be submitted to the OCD on a case-by-case basis in accordance with Paragraph (3) of Subsection D of 19.15.9.712.
- 8) Once the earthen pit is removed to visual extents of contamination, a five (5) -point composite sample will be collected from directly below the liner(s) or at native soil. Additional discrete samples will be collected from any area that is wet, discolored or shows other evidence of a release. All samples being collected will be analyzed for benzene, and total BTEX via USEPA Method 8021B, TPH via USEPA Method 418.1, and chlorides via USEPA 300.1, as in accordance with 19.15.17.13 Subsection C Paragraph (3) NMAC.
- 9) Depending on soil sample results the area will be either backfilled or the area will be excavated.
 - a. If soil samples do not exceed the regulatory standards of 0.2 mg/kg benzene, 50 mg/kg BTEX, 100 mg/kg TPH, and 250 mg/kg or background concentration of chlorides, as in accordance with 19.15.17.13 Subsection C Paragraph (3) NMAC.
 - i. Elm Ridge Exploration, or a contractor acting on behalf of Elm Ridge Exploration, shall submit a Form C-141 with the laboratory results so that the division may review the results to determine if additional delineation is required in accordance with Paragraph (4) of Subsection C of 19.15.17.13 NMAC.
 - ii. Elm Ridge Exploration, or a contractor acting on behalf of Elm Ridge Exploration, will backfill the excavation or impacted area with non-waste containing, earthen material, in accordance with 19.15.17.13 Subsection E Paragraph (6) NMAC. A soil cover shall be installed for all backfilled excavations consisting of the background thickness of topsoil or one foot of suitable material to establish vegetation at the site, whichever is greater in accordance with Subsections H of 19.15.17.13 NMAC. The operator shall construct the soil cover to the site's existing grade and prevent ponding of water and erosion of the cover material.
 - iii. All areas of the well site that are no longer utilized on a day to day basis for the production of oil and/or gas, Elm Ridge Exploration, or a contractor acting on behalf of Elm Ridge Exploration, will substantially restore, re-contour and re-vegetate the areas, in

accordance with 19.15.17.13 Subsections G and I NMAC. The operator shall notify the division when it has been re-seeded and when it has achieved successful re-vegetation. For re-vegetation methods, please see attached re-vegetation plan.

- b. If soil samples exceed the regulatory standards stated above.
 - i. Elm Ridge Exploration, or a contractor acting on behalf of Elm Ridge Exploration, shall submit a Form C-141 with the laboratory results so that the division may review the results to determine if additional delineation is required in accordance with Paragraph (4) of Subsection C of 19.15.17.13 NMAC.
 - ii. Activities beyond this point will be in accordance with 19.15.3.116 NMAC and 19.15.11.19 NMAC.

REPORTING

Elm Ridge Exploration will submit a closure report within 60 days following the earthen pit closure. The closure report will consist of a form C-144 with all supporting data and a form C-141 with all supporting data. The supporting data will include proof of closure notice to the surface owner and the OCD, confirmation sampling analytical results, a site diagram, soil backfilling and cover installation, re-vegetation rates, re-seeding techniques and site reclamation photo documentation if applicable, along with all other information related to the onsite activities.

We appreciate the opportunity to be of service. If you have any questions or require further information, please do not hesitate to contact our office at (505) 632-3476 Ext 201.

Respectfully Submitted:

Elm Ridge Exploration

Amy Mackey
Elm Ridge Exploration

Elm Ridge Exploration

Re-Seeding Techniques and Seed Mixture Ratios

These applied practices by Elm Ridge Exploration will at a minimum comply with the New Mexico Oil Conservation Divisions rule 19.15.17.13, Subsection I NMAC Elm Ridge Exploration has adopted these re-seeding application techniques, ratios and mixtures as their standard operating procedures.

1. The first growing season after closure of a below grade tank or pit, all areas of the well site not utilized for the production of oil and/or gas on a daily basis will be re-seeded with the specified seed mixture.
2. The seed mixture used will be certified with no primary or secondary noxious weeds in seed mixtures. The seed labels from each bag shall be available for inspection while seed is being sown.
3. The operator shall accomplish seeding by drilling on the contour whenever practical or by other division-approved methods. The operator shall obtain vegetative cover that equals 70% of the native perennial vegetative cover (un-impacted by overgrazing, fire or other intrusion damaging to native vegetation) consisting of at least three native plant species, including at least one grass, but not including noxious weeds, and maintain that cover through two successive growing seasons. During the two growing seasons that prove viability, there shall be no artificial irrigation of the vegetation.
4. Hand seeding with hydro-mulch, excelsior netting or mulch with netting is required on the cut/fill slopes. Mulch will be spread at a rate of 2,000-3,000 pounds per acre.
5. Compacted areas determined by visual inspection will be ripped to a depth of twelve (12) inches below ground surface and disked to a depth of six (6) inches before seeding. Seeding shall be done with a disk type drill with two (2) boxes for various seed sizes. The drill rows shall be eight (8) to ten (10) inches apart. Seed shall be planted at no less than one-half (1/2) inch deep or more than one (1) inch deep. The seeder shall be followed with a drag, packer, or roller to ensure uniform coverage of the seed and adequate compaction. Drilling shall be done on the contour where possible, but not up and down the slope.
6. Where slopes are too steep for contour drilling a hand seeder shall be used. Seed shall be covered to the depth stated above by whatever means is practical. If the seed is unable to be covered by the means listed above, the prescribed seed mixture amount will be doubled.

7. Elm Ridge Exploration shall repeat seeding or planting until it successfully achieves the required vegetative cover of 70% of the native perennial vegetation cover.
8. Upon abandonment of a well site, if the retention of the access road is not considered necessary for the management and multiple uses of the natural resources, or by the surface owner, it will be ripped a minimum of twelve (12) inches in depth. After ripping, water bars will be installed. All ripped surfaces are to be protected from vehicular travel by construction of a dead end ditch and earthen barricade at the entrance to these ripped areas. Re-seeding of areas affected by the ditch and barriers will be re-seeded if necessary.
9. Elm Ridge Exploration, or a contractor acting on behalf of Elm Ridge Exploration, will inform the division once successful re-vegetation has occurred.