

District I
1625 N. French Dr., Hobbs, NM 88240
Phone:(575) 393-8161 Fax:(575) 393-0720
District II
811 S. First St., Artesia, NM 88210
Phone:(575) 748-1283 Fax:(575) 748-9720
District III
1000 Rio Brazos Rd., Aztec, NM 87410
Phone:(505) 334-8178 Fax:(505) 334-6170
District IV
1220 S. St Francis Dr., Santa Fe, NM 87505
Phone:(505) 476-3470 Fax:(505) 476-3462

State of New Mexico
Energy, Minerals and Natural Resources
Oil Conservation Division
1220 S. St Francis Dr.
Santa Fe, NM 87505

Form C-101
August 1, 2011
Permit 189436

APPLICATION FOR PERMIT TO DRILL, RE-ENTER, DEEPEN, PLUGBACK, OR ADD A ZONE

1. Operator Name and Address BURLINGTON RESOURCES OIL & GAS COMPANY LP 3401 E. 30TH STREET FARMINGTON, NM 87402		2. OGRID Number 14538
4. Property Code 7575		3. API Number 30-045-35579
5. Property Name Susco 16 State		6. Well No. 101H

7. Surface Location

UL - Lot	Section	Township	Range	Lot Idn	Feet From	N/S Line	Feet From	E/W Line	County
K	15	32N	08W		2000	S	1691	W	San Juan

8. Proposed Bottom Hole Location

UL - Lot	Section	Township	Range	Lot Idn	Feet From	N/S Line	Feet From	E/W Line	County
E	16	32N	08W	E	1935	N	675	W	San Juan

9. Pool Information

BASIN FRUITLAND COAL (GAS)	71629
----------------------------	-------

Additional Well Information

11. Work Type New Well	12. Well Type GAS	13. Cable/Rotary	14. Lease Type State	15. Ground Level Elevation 6916
16. Multiple N	17. Proposed Depth 8910	18. Formation Fruitland Coal	19. Contractor	20. Spud Date
Depth to Ground water		Distance from nearest fresh water well		Distance to nearest surface water

☐ We will be using a closed-loop system in lieu of lined pits

21. Proposed Casing and Cement Program

Type	Hole Size	Casing Size	Casing Weight/ft	Setting Depth	Sacks of Cement	Estimated TOC
Surf	12.25	9.58	32.3	500	253	0
Int1	8.75	7	23	5007	1107	0
Prod	6.25	4.5	11.6	8910	0	

Casing/Cement Program: Additional Comments

Cement volumes are shown in Cubic Feet instead of sx. The production string will be an uncemented perforated liner (N-80 or L-80 whichever is available). The setting depths show are in TMDs and the TVDs are also indicated on the drilling program. The production interval will all be within Section 16 and will not produce from a non-standard location. Burlington will deliver the C102 plat which shows the dedicated acres as 640 (all of section 16) and the surface location is in section 15. We will also deliver the drillers plat that shows footage details, a side view plat, drilling plans and proposed directional plan to help the NMOCDD approve this APD. A C144 will be submitted for the temporary pit.

22. Proposed Blowout Prevention Program

Type	Working Pressure	Test Pressure	Manufacturer
Double Ram	2000	2000	Schafer

23. I hereby certify that the information given above is true and complete to the best of my knowledge and belief. I further certify I have complied with 19.15.14.9 (A) NMAC <input checked="" type="checkbox"/> and/or 19.15.14.9 (B) NMAC <input checked="" type="checkbox"/> if applicable. Signature: _____ Printed Name: Electronically filed by Patsy Clugston Title: Senior Regulatory Specialist Email Address: patsy.l.clugston@conocophillips.com Date: 7/21/2014	<div style="text-align: center;">OIL CONSERVATION DIVISION</div> Approved By: Charlie Perrin Title: District Supervisor Approved Date: 7/28/2014 Expiration Date: 7/28/2016 Conditions of Approval Attached
Phone: 505-326-9518	

DISTRICT I
1826 N. French Dr., Hobbs, N.M. 88240
Phone: (575) 393-8161 Fax: (575) 393-0720

DISTRICT II
811 S. First St., Artesia, N.M. 86210
Phone: (575) 748-1283 Fax: (575) 748-9720

DISTRICT III
1000 Rio Brazos Rd., Aztec, N.M. 87410
Phone: (505) 334-8178 Fax: (505) 334-8170

DISTRICT IV
1220 S. St. Francis Dr., Santa Fe, N.M. 87505
Phone: (505) 478-3460 Fax: (505) 478-3482

State of New Mexico
Energy, Minerals & Natural Resources Department

OIL CONSERVATION DIVISION
1220 South St. Francis Dr.
Santa Fe, N.M. 87505

Form C-102
Revised August 1, 2011
Submit one copy to appropriate
District Office

☐ AMENDED REPORT

WELL LOCATION AND ACREAGE DEDICATION PLAT

*API Number 30-045		*Pool Code 71629		*Pool Name BASIN FRUITLAND COAL	
*Property Code 7575		*Property Name SUSCO 16 STATE			*Well Number 101H
*GRID No. 14538		*Operator Name BURLINGTON RESOURCES OIL & GAS COMPANY LP			*Elevation 6916

10 Surface Location									
UL or lot no.	Section	Township	Range	Lot Idn	Feet from the	North/South line	Feet from the	East/West line	County
K	15	32 N	8 W		2000	SOUTH	1691	WEST	SAN JUAN

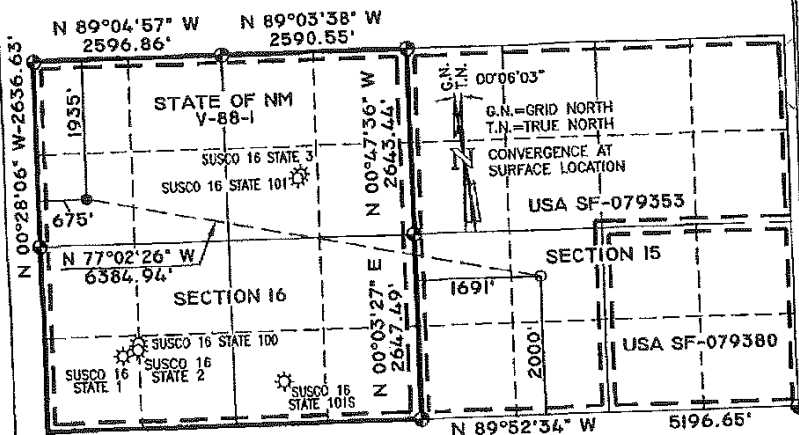
11 Bottom Hole Location If Different From Surface									
UL or lot no.	Section	Township	Range	Lot Idn	Feet from the	North/South line	Feet from the	East/West line	County
E	16	32 N	8 W		1935	NORTH	675	WEST	SAN JUAN

12 Dedicated Acres 640.00	13 Joint or Infill	14 Consolidation Code	15 Order No.
-------------------------------------	--------------------	-----------------------	--------------

NO ALLOWABLE WILL BE ASSIGNED TO THIS COMPLETION UNTIL ALL INTERESTS HAVE BEEN CONSOLIDATED
OR A NON-STANDARD UNIT HAS BEEN APPROVED BY THE DIVISION

- 16
LEGEND:
○ = SURFACE LOCATION
● = BOTTOM HOLE LOCATION
⊙ = FOUND 1962 B.L.M. BRASS CAP
⊛ = EXISTING WELL

NOTE:
BEARINGS & DISTANCES SHOWN
ARE REFERENCED TO THE
NEW MEXICO COORDINATE
SYSTEM, WEST ZONE, NAD 83,
UNLESS OTHERWISE NOTED.



BOTTOM HOLE LOCATION
LAT: 36.9859772° N
LONG: 107.6870129° W
NAD 83
LAT: 36°59.15844' N
LONG: 107°41.18389' W
NAD 27

SURFACE LOCATION
LAT: 36.9820159° N
LONG: 107.6657168° W
NAD 83
LAT: 36°58.92075' N
LONG: 107°59.90619' W
NAD 27

17 OPERATOR CERTIFICATION

I hereby certify that the information contained herein is true and complete to the best of my knowledge and belief, and that this organization either owns a working interest or unleased mineral interest in the land including the proposed bottom hole location or has a right to drill this well at this location pursuant to a contract with an owner of such a mineral or working interest, or to a voluntary pooling agreement or a compulsory pooling order heretofore entered by the division.

Signature: *Dollie L. Busse* Date: *3/25/14*
Printed Name: **Dollie L. Busse**
E-mail Address:

18 SURVEYOR CERTIFICATION

I hereby certify that the well location shown on this plat was plotted from field notes of actual surveys made by me or under my supervision, and that the same is true and correct to the best of my belief.

Date of Survey: **2/11/14**
Signature and Seal:

MARSHALL W. LINDEEN
NEW MEXICO
17078
PROFESSIONAL SURVEYOR
Certificate Number: **17078**

District I
 1625 N. French Dr., Hobbs, NM 88240
 Phone:(575) 393-6161 Fax:(575) 393-0720
District II
 811 S. First St., Artesia, NM 88210
 Phone:(575) 748-1283 Fax:(575) 748-9720
District III
 1000 Rio Brazos Rd., Aztec, NM 87410
 Phone:(505) 334-6178 Fax:(505) 334-6170
District IV
 1220 S. St Francis Dr., Santa Fe, NM 87505
 Phone:(505) 476-3470 Fax:(505) 476-3462

State of New Mexico
Energy, Minerals and Natural Resources
Oil Conservation Division
1220 S. St Francis Dr.
Santa Fe, NM 87505

Form APD Comments

 Permit 189436

PERMIT COMMENTS

Operator Name and Address:		API Number:
BURLINGTON RESOURCES OIL & GAS COMPANY LP [14538]		30-045-35579
3401 E. 30TH STREET		Well:
FARMINGTON, NM 87402		Susco 16 State #101H

Created By	Comment	Comment Date
whoppe	"Drillers Plat" and updated directional plan supplied on July 22nd - used to verify x and y distances relative to the plat.	7/23/2014

District I
1625 N. French Dr., Hobbs, NM 88240
Phone:(575) 393-8161 Fax:(575) 393-0720
District II
811 S. First St., Artesia, NM 88210
Phone:(575) 748-1283 Fax:(575) 748-9720
District III
1000 Rio Brazos Rd., Aztec, NM 87410
Phone:(505) 334-6178 Fax:(505) 334-6170
District IV
1220 S. St Francis Dr., Santa Fe, NM 87505
Phone:(505) 476-3470 Fax:(505) 476-3482

State of New Mexico
Energy, Minerals and Natural Resources
Oil Conservation Division
1220 S. St Francis Dr.
Santa Fe, NM 87505

Form APD Conditions

Permit 189436

PERMIT CONDITIONS OF APPROVAL

Operator Name and Address: BURLINGTON RESOURCES OIL & GAS COMPANY LP [14538] 3401 E. 30TH STREET FARMINGTON, NM 87402	API Number: 30-045-35579
	Well: Susco 16 State #101H

OCD Reviewer	Condition
whoppe	Will require a directional survey with the C-104
whoppe	Hold C-104 for an "as drilled plat"