

**District I**  
 1625 N. French Dr., Hobbs, NM 88240  
 Phone:(575) 393-6161 Fax:(575) 393-0720  
**District II**  
 811 S. First St., Artesia, NM 88210  
 Phone:(575) 749-1283 Fax:(575) 748-9720  
**District III**  
 1000 Rio Brazos Rd., Aztec, NM 87410  
 Phone:(505) 334-6178 Fax:(505) 334-6170  
**District IV**  
 1220 S. St Francis Dr., Santa Fe, NM 87505  
 Phone:(505) 476-3470 Fax:(505) 476-3462

**State of New Mexico**  
**Energy, Minerals and Natural Resources**  
**Oil Conservation Division**  
**1220 S. St Francis Dr.**  
**Santa Fe, NM 87505**

Form C-101  
 August 1, 2011  
 Permit 190143

**APPLICATION FOR PERMIT TO DRILL, RE-ENTER, DEEPEN, PLUGBACK, OR ADD A ZONE**

1. Operator Name and Address APACHE CORP 303 Veterans Airpark Lane Midland, TX 79705		2. OGRID Number 873
		3. API Number 30-015-42554
4. Property Code 313568	5. Property Name OUTLAW STATE	6. Well No. 002

**7. Surface Location**

UL - Lot P	Section 29	Township 17S	Range 28E	Lot Idn	Feet From 990	N/S Line S	Feet From 990	E/W Line E	County Eddy
---------------	---------------	-----------------	--------------	---------	------------------	---------------	------------------	---------------	----------------

**8. Proposed Bottom Hole Location**

UL - Lot P	Section 29	Township 17S	Range 28E	Lot Idn P	Feet From 990	N/S Line S	Feet From 990	E/W Line E	County Eddy
---------------	---------------	-----------------	--------------	--------------	------------------	---------------	------------------	---------------	----------------

**9. Pool Information**

ARTESIA; GLORIETA-YESO (O)	96830
----------------------------	-------

**Additional Well Information**

11. Work Type New Well	12. Well Type OIL	13. Cable/Rotary	14. Lease Type State	15. Ground Level Elevation 3698
16. Multiple N	17. Proposed Depth 5200	18. Formation Yeso	19. Contractor	20. Spud Date
Depth to Ground water		Distance from nearest fresh water well		Distance to nearest surface water

We will be using a closed-loop system in lieu of lined pits

**21. Proposed Casing and Cement Program**

Type	Hole Size	Casing Size	Casing Weight/ft	Setting Depth	Sacks of Cement	Estimated TOC
Surf	11	8.625	24	400	200	
Prod	7.875	5.5	17	5200	700	

**Casing/Cement Program: Additional Comments**

--

**22. Proposed Blowout Prevention Program**

Type	Working Pressure	Test Pressure	Manufacturer
Hydril	3000	2000	

23. I hereby certify that the information given above is true and complete to the best of my knowledge and belief. I further certify I have complied with 19.15.14.9 (A) NMAC <input checked="" type="checkbox"/> and/or 19.15.14.9 (B) NMAC <input checked="" type="checkbox"/> , if applicable.  Signature: Printed Name: Electronically filed by Bobby Smith Title: Email Address: bobby.smith@apachecorp.com Date: 8/5/2014	<b>OIL CONSERVATION DIVISION</b>  Approved By: Randy Dade Title: District Supervisor Approved Date: 8/12/2014 Expiration Date: 8/12/2016 Conditions of Approval Attached
Phone: 432-818-1020	

DISTRICT I  
1625 N. French Dr., Hobbs, NM 88240  
Phone (505) 393-6161 Fax: (505) 393-0720

DISTRICT II  
811 S. First St., Artesia, NM 88210  
Phone (505) 748-1289 Fax: (505) 748-9720

DISTRICT III  
1000 Rio Brazos Rd., Aztec, NM 87410  
Phone (505) 334-6178 Fax: (505) 334-6170

DISTRICT IV  
1220 S. St. Francis Dr., Santa Fe, NM 87505  
Phone (505) 476-3460 Fax: (505) 476-3462

State of New Mexico  
Energy, Minerals and Natural Resources Department

Form C-102  
Revised August 1, 2011

Submit one copy to appropriate  
District Office

OIL CONSERVATION DIVISION  
1220 South St. Francis Dr.  
Santa Fe, New Mexico 87505

WELL LOCATION AND ACREAGE DEDICATION PLAT

AMENDED REPORT

API Number <b>30-015-</b>	Pool Code <b>92830</b>	Pool Name <b>Artesia; Glorieta - Yeso</b>
Property Code	Property Name <b>OUTLAW STATE</b>	Well Number <b>2</b>
OGRID No. <b>873</b>	Operator Name <b>APACHE CORPORATION</b>	Elevation <b>3698</b>

Surface Location

UL or lot No.	Section	Township	Range	Lot Idn	Feet from the	SOUTH/South line	Feet from the	East/WEST LINE	County
P	29	17 S	28 E		990	SOUTH	990	EAST	EDDY

Bottom Hole Location If Different From Surface

UL or lot No.	Section	Township	Range	Lot Idn	Feet from the	SOUTH/South line	Feet from the	East/WEST LINE	County

Dedicated Acres <b>40</b>	Joint or Infill	Consolidation Code	Order No.
------------------------------	-----------------	--------------------	-----------

NO ALLOWABLE WILL BE ASSIGNED TO THIS COMPLETION UNTIL ALL INTERESTS HAVE BEEN CONSOLIDATED  
OR A NON-STANDARD UNIT HAS BEEN APPROVED BY THE DIVISION

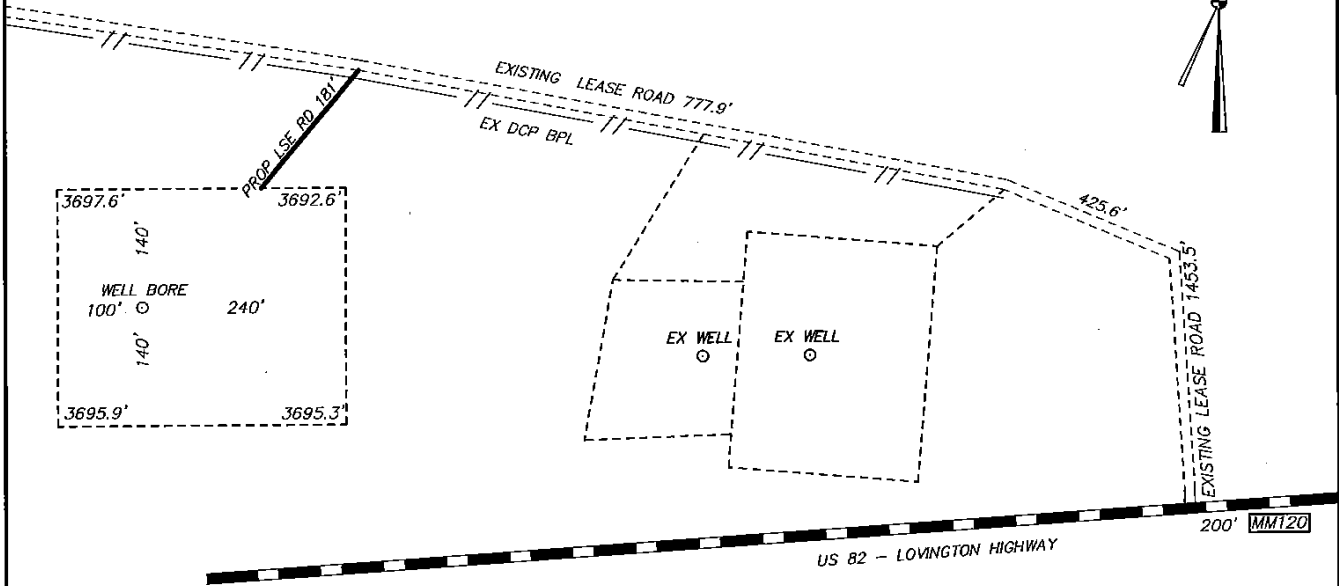
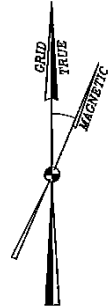
<p>Lat - N 32.812407" Long - W 104.206286" NMSPC E.: 580369.4 E.: 580369.4 (NAD83)</p> <p>Lat - N 32.812292" Long - W 104.205773" NMSPC E.: 582946.7 E.: 539190.3 (NAD27)</p>	<p>Lat - N 32.812382" Long - W 104.197769" NMSPC E.: 582986.2 E.: 582986.2 (NAD83)</p> <p>Lat - N 32.812267" Long - W 104.197257" NMSPC E.: 582941.1 E.: 541807.1 (NAD27)</p>	<p>Lat - N 32.812355" Long - W 104.189253" NMSPC E.: 585287.4 E.: 585602.3 (NAD83)</p> <p>Lat - N 32.812240" Long - W 104.188741" NMSPC E.: 585234.3 E.: 544423.2 (NAD27)</p>	<p><b>OPERATOR CERTIFICATION</b> I hereby certify that the information contained herein is true and complete to the best of my knowledge and belief, and that this organization either owns a working interest or unleased mineral interest in the land including the proposed bottom hole location or has a right to drill this well at this location pursuant to a contract with an owner of such a mineral or working interest, or to a voluntary pooling agreement or a compulsory pooling order heretofore entered by the division.</p> <p><i>Michelle Cooper 8-5-14</i> Signature Date</p> <p><b>Michelle Cooper</b> Printed Name</p> <p><i>michelle.cooper@apachecorp.com</i> Email Address</p>
<p>Lat - N 32.805133" Long - W 104.206361" NMSPC E.: 580349.5 E.: 580349.5 (NAD83)</p> <p>Lat - N 32.805018" Long - W 104.205848" NMSPC E.: 566600.4 E.: 539170.4 (NAD27)</p>	<p>Lat - N 32.805220" Long - W 104.189361" NMSPC E.: 585701.8 E.: 585572.7 (NAD83)</p> <p>Lat - N 32.805105" Long - W 104.188849" NMSPC E.: 544393.6 E.: 544393.6 (NAD27)</p>	<p><b>SURFACE LOCATION</b> Lat - N 32.800759" Long - W 104.192642" NMSPC E.: 555077.5 E.: 584566.9 (NAD83)</p> <p>Lat - N 32.800644" Long - W 104.192130" NMSPC E.: 655014.5 E.: 543387.8 (NAD27)</p>	<p><b>SURVEYOR CERTIFICATION</b> I hereby certify that the well location shown on this plat was plotted from field notes of actual surveys made by me or under my supervision, and that the same is true and correct to the best of my belief.</p> <p><b>MARCO L. JONES</b> Date Surveyed</p> <p><b>MARCO L. JONES</b> Signature &amp; Seal of Professional Surveyor 7977</p> <p>Certificate No. Gary Jones 7977</p> <p>0' 500' 1000' 1500' 2000' SCALE: 1" = 1000' WO Num.: 30198</p>
<p>Lat - N 32.797859" Long - W 104.206430" NMSPC E.: 580351.7 E.: 580351.7 (NAD83)</p> <p>Lat - N 32.797744" Long - W 104.205918" NMSPC E.: 539152.5 E.: 539152.5 (NAD27)</p>	<p>Lat - N 32.797970" Long - W 104.197936" NMSPC E.: 582941.7 E.: 582941.7 (NAD83)</p> <p>Lat - N 32.797855" Long - W 104.197424" NMSPC E.: 653997.6 E.: 541762.5 (NAD27)</p>	<p>Lat - N 32.798079" Long - W 104.189456" NMSPC E.: 654103.8 E.: 585547.1 (NAD83)</p> <p>Lat - N 32.797964" Long - W 104.188944" NMSPC E.: 654040.8 E.: 544368.0 (NAD27)</p>	<p>Diagram showing well location (S.L.) and dimensions: 990' and 990'.</p>

SECTION 29, TOWNSHIP 17 SOUTH, RANGE 28 EAST. N.M.P.M.,  
 EDDY COUNTY, NEW MEXICO.

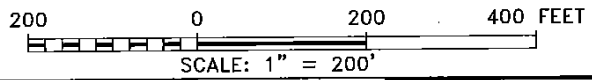
APACHE CORPORATION  
 OUTLAW STATE #2  
 ELEV. - 3698'

Lat - N 32.800759°  
 Long - W 104.192642°  
 NMSPC E.: 655077.5  
 E.: 584566.9  
 (NAD83)

Lat - N 32.800644°  
 Long - W 104.192130°  
 NMSPC E.: 655014.5  
 E.: 543387.8  
 (NAD27)



ARTESIA, NM IS ±12 MILES TO THE NORTHWEST OF LOCATION.



Directions to Location:

FROM LOCO HILLS GO WEST ON US HWY 82,  
 APPROX 200 FEET WEST OF MILE MARKER 120 TURN  
 NORTHWEST ON LEASE ROAD 0.5 MILES TO  
 PROPOSED LEASE ROAD ON LEFT.



P.O. Box 1786 (575) 393-7316 - Office  
 1120 N. West County Rd. (575) 392-2206 - Fax  
 Hobbs, New Mexico 88241 basin-surveys.com

REF: OUTLAW STATE #2 / WELL PAD TOPO
THE OUTLAW STATE #2 LOCATED 990' FROM THE SOUTH LINE AND 990' FROM THE EAST LINE OF SECTION 29, TOWNSHIP 17 SOUTH, RANGE 28 EAST. N.M.P.M., EDDY COUNTY, NEW MEXICO.

**District I**  
 1625 N. French Dr., Hobbs, NM 88240  
 Phone:(575) 393-6161 Fax:(575) 393-0720  
**District II**  
 811 S. First St., Artesia, NM 88210  
 Phone:(575) 748-1283 Fax:(575) 748-9720  
**District III**  
 1000 Rio Brazos Rd., Aztec, NM 87410  
 Phone:(505) 334-6178 Fax:(505) 334-6170  
**District IV**  
 1220 S. St Francis Dr., Santa Fe, NM 87505  
 Phone:(505) 476-3470 Fax:(505) 476-3462

**State of New Mexico**  
**Energy, Minerals and Natural Resources**  
**Oil Conservation Division**  
**1220 S. St Francis Dr.**  
**Santa Fe, NM 87505**

Form APD Comments

Permit 190143

**PERMIT COMMENTS**

Operator Name and Address: APACHE CORP [873] 303 Veterans Airpark Lane Midland, TX 79705	API Number: 30-015-42554
	Well: OUTLAW STATE #002

Created By	Comment	Comment Date
CSHAPARD	Land s/S	8/6/2014

**District I**  
 1625 N. French Dr., Hobbs, NM 88240  
 Phone:(575) 393-6161 Fax:(575) 393-0720  
**District II**  
 811 S. First St., Artesia, NM 88210  
 Phone:(575) 749-1283 Fax:(575) 748-9720  
**District III**  
 1000 Rio Brazos Rd., Aztec, NM 87410  
 Phone:(505) 334-6178 Fax:(505) 334-6170  
**District IV**  
 1220 S. St Francis Dr., Santa Fe, NM 87505  
 Phone:(505) 476-3470 Fax:(505) 476-3462

**State of New Mexico  
 Energy, Minerals and Natural Resources  
 Oil Conservation Division  
 1220 S. St Francis Dr.  
 Santa Fe, NM 87505**

**PERMIT CONDITIONS OF APPROVAL**

Operator Name and Address: APACHE CORP [873] 303 Veterans Airpark Lane Midland, TX 79705		API Number: 30-015-42554
		Well: OUTLAW STATE #002
OCD Reviewer	Condition	
CSHAPARD	Once the well is spud, to prevent ground water contamination through whole or partial conduits from the surface, the operator shall drill without interruption through the fresh water zone or zones and shall immediately set in cement the water protection string	