

**District I**  
1625 N. French Dr., Hobbs, NM 88240  
Phone:(575) 393-8161 Fax:(575) 393-0720  
**District II**  
811 S. First St., Artesia, NM 88210  
Phone:(575) 748-1283 Fax:(575) 748-9720  
**District III**  
1000 Rio Brazos Rd., Aztec, NM 87410  
Phone:(505) 334-8178 Fax:(505) 334-6170  
**District IV**  
1220 S. St Francis Dr., Santa Fe, NM 87505  
Phone:(505) 476-3470 Fax:(505) 476-3482

**State of New Mexico**  
**Energy, Minerals and Natural Resources**  
**Oil Conservation Division**  
**1220 S. St Francis Dr.**  
**Santa Fe, NM 87505**

Form C-101  
August 1, 2011  
Permit 192245

**APPLICATION FOR PERMIT TO DRILL, RE-ENTER, DEEPEN, PLUGBACK, OR ADD A ZONE**

1. Operator Name and Address BTA OIL PRODUCERS, LLC 104 S. Pecos Midland, TX 79701		2. OGRID Number 260297
4. Property Code 313707		3. API Number 30-025-42122
5. Property Name CHISO 14 STATE 8711		6. Well No. 001H

**7. Surface Location**

UL - Lot	D	Section	14	Township	22S	Range	34E	Lot Idn	Feet From	180	N/S Line	N	Feet From	250	E/W Line	W	County	Lea
----------	---	---------	----	----------	-----	-------	-----	---------	-----------	-----	----------	---	-----------	-----	----------	---	--------	-----

**8. Proposed Bottom Hole Location**

UL - Lot	M	Section	14	Township	22S	Range	34E	Lot Idn	M	Feet From	330	N/S Line	S	Feet From	380	E/W Line	W	County	Lea
----------	---	---------	----	----------	-----	-------	-----	---------	---	-----------	-----	----------	---	-----------	-----	----------	---	--------	-----

**9. Pool Information**

OJO CHISO;BONE SPRING	96553
-----------------------	-------

**Additional Well Information**

11. Work Type New Well	12. Well Type OIL	13. Cable/Rotary	14. Lease Type State	15. Ground Level Elevation 3513
16. Multiple N	17. Proposed Depth 15300	18. Formation Bone Spring	19. Contractor	20. Spud Date 10/6/2014
Depth to Ground water		Distance from nearest fresh water well		Distance to nearest surface water

☒ We will be using a closed-loop system in lieu of lined pits

**21. Proposed Casing and Cement Program**

Type	Hole Size	Casing Size	Casing Weight/ft	Setting Depth	Sacks of Cement	Estimated TOC
Surf	17.5	13.375	54.5	1750	1435	0
Int1	12.25	9.625	40	5800	1300	0
Prod	8.75	5.5	17	15200	1950	5000

**Casing/Cement Program: Additional Comments**

--

**22. Proposed Blowout Prevention Program**

Type	Working Pressure	Test Pressure	Manufacturer
Double Ram	5000	5000	

23. I hereby certify that the information given above is true and complete to the best of my knowledge and belief. I further certify I have complied with 19.15.14.9 (A) NMAC <input checked="" type="checkbox"/> and/or 19.15.14.9 (B) NMAC <input type="checkbox"/> if applicable.  Signature:	<b>OIL CONSERVATION DIVISION</b>
Printed Name: Electronically filed by Pam Inskeep	Approved By: Paul Kautz
Title: Regulatory Administrator	Title: Geologist
Email Address: pinskeep@btaoil.com	Approved Date: 9/18/2014      Expiration Date: 9/18/2016
Date: 9/15/2014      Phone: 432-682-3753	Conditions of Approval Attached

DISTRICT I  
1625 N. French Dr., Hobbs, NM 88240  
Phone: (575) 393-6161 Fax: (575) 393-0720

DISTRICT II  
811 S. First St., Artesia, NM 88210  
Phone: (575) 748-1283 Fax: (575) 748-9720

DISTRICT III  
1000 Rio Brazos Road, Aztec, NM 87410  
Phone: (505) 334-6178 Fax: (505) 334-6170

DISTRICT IV  
1220 S. St. Francis Dr., Santa Fe, NM 87505  
Phone: (505) 476-3460 Fax: (505) 476-3462

State of New Mexico  
Energy, Minerals & Natural Resources Department  
OIL CONSERVATION DIVISION  
1220 South St. Francis Dr.  
Santa Fe, New Mexico 87505

Form C-102  
Revised August 1, 2011  
Submit one copy to appropriate  
District Office

☐ AMENDED REPORT

WELL LOCATION AND ACREAGE DEDICATION PLAT

API Number <b>30-015-</b>	Pool Code <b>97293</b>	Pool Name <b>Ojo Chiso; Bone Spring, South</b>
Property Code	Property Name <b>8711 CHISO 14 STATE</b>	Well Number <b>1H</b>
OGRID No. <b>260297</b>	Operator Name <b>BTA OIL PRODUCERS, LLC</b>	Elevation <b>3513'</b>

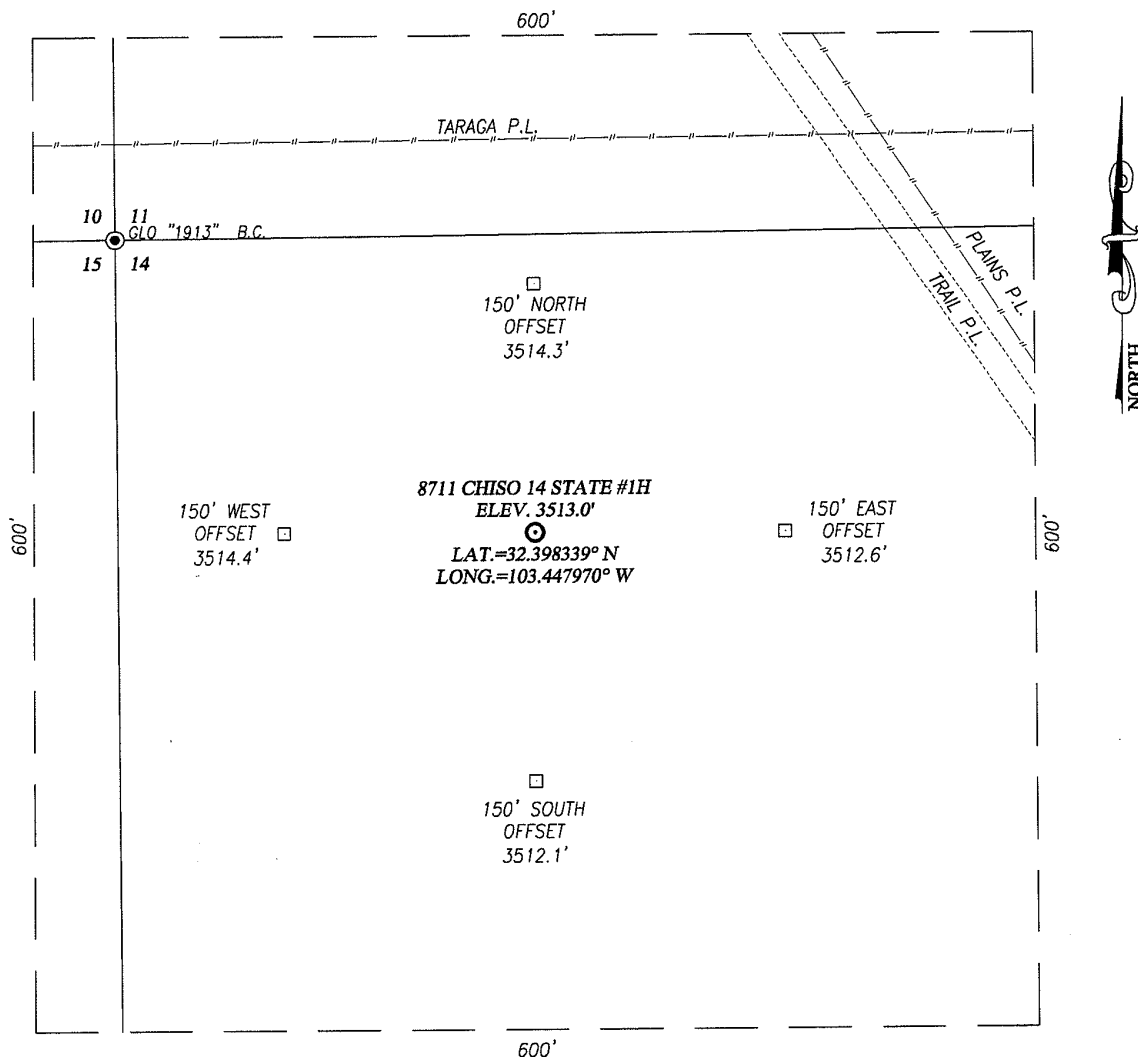
UL or lot No.	Section	Township	Range	Lot Idn	Feet from the	North/South line	Feet from the	East/West line	County
<b>D</b>	<b>14</b>	<b>22-S</b>	<b>34-E</b>		<b>180</b>	<b>NORTH</b>	<b>250</b>	<b>WEST</b>	<b>LEA</b>

Bottom Hole Location If Different From Surface

UL or lot No.	Section	Township	Range	Lot Idn	Feet from the	North/South line	Feet from the	East/West line	County
<b>M</b>	<b>14</b>	<b>22-S</b>	<b>34-E</b>		<b>330</b>	<b>SOUTH</b>	<b>380</b>	<b>WEST</b>	<b>LEA</b>
Dedicated Acres <b>160</b>	Joint or Infill	Consolidation Code	Order No.						

NO ALLOWABLE WILL BE ASSIGNED TO THIS COMPLETION UNTIL ALL INTERESTS HAVE BEEN CONSOLIDATED OR A NON-STANDARD UNIT HAS BEEN APPROVED BY THE DIVISION

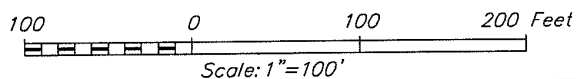
	<p>GEODETIC COORDINATES NAD 27 NME SURFACE LOCATION</p> <p>Y=509761.8 N X=773269.3 E</p> <p>LAT.=32.398340° N LONG.=103.447970° W</p>	<p><b>OPERATOR CERTIFICATION</b></p> <p>I hereby certify that the information herein is true and complete to the best of my knowledge and belief, and that this organization either owns a working interest or unleased mineral interest in the land including the proposed bottom hole location or has a right to drill this well at this location pursuant to a contract with an owner of such mineral or working interest, or to a voluntary pooling agreement or a compulsory pooling order heretofore entered by the division.</p> <p><i>Pam Inskeep</i> 09/12/14 Signature Date</p> <p>Pam Inskeep, Regulatory Admin. Printed Name</p> <p>pinskeep@btaoil.com E-mail Address</p>
	<p>CORNER COORDINATES TABLE</p> <p>A - Y=509939.5 N, X=773018.2 E B - Y=509951.3 N, X=774337.4 E C - Y=504675.6 N, X=774368.6 E D - Y=504665.8 N, X=773049.0 E</p>	<p><b>SURVEYOR CERTIFICATION</b></p> <p>I hereby certify that the well location shown on this plat was plotted from field notes of actual surveys made by me or under my supervision, and that the same is true and correct to the best of my belief.</p> <p>AUGUST 1, 2014</p> <p>Date of Survey</p> <p>Signature &amp; Seal of Professional Surveyor:  </p> <p>Certifying Officer: Gary S. Eidson 12641 Ronald J. Eidson 3239</p> <p>ACK JWSC W.O.: 14.11.0776</p>
	<p>GEODETIC COORDINATES NAD 27 NME BOTTOM HOLE LOCATION</p> <p>Y=504998.5 N X=773427.0 E</p>	



NOTE:  
1) SEE "LOCATION VERIFICATION MAP"  
FOR PROPOSED ROAD LOCATION.

#### DIRECTIONS TO 8711 CHISO 14 STATE #1H:

FROM THE INTERSECTION OF ST. HWY. 207 AND ST. HWY. 176  
IN EUNICE, NEW MEXICO. GO SOUTH ON ST. HWY. #207  
APPROX. 2.5 MILES. TURN RIGHT AND GO WEST ON CO. RD.  
#21 (DELAWARE BASIN ROAD), APPROX. 20.5 MILES. TURN  
RIGHT AND GO NORTH 3.8 MILES. VEER RIGHT AND GO  
NORTH-NORTHEAST APPROX. 1.35 MILES. TURN LEFT AND GO  
WEST ON LEASE ROAD APPROX. 800 FEET TO MEWBOURNE  
WELL-CABRA LOCA 11 BSOB ST#1H. CONTINUE WEST ALONG  
TARGA P.L. APPROX. 2900 FEET TO THE LOCATION.



## BTA OIL PRODUCERS, LLC

**8711 CHISO 14 STATE #1H WELL**  
**LOCATED 180 FEET FROM THE NORTH LINE**  
**AND 250 FEET FROM THE WEST LINE OF SECTION 14,**  
**TOWNSHIP 22 SOUTH, RANGE 34 EAST, N.M.P.M.,**  
**LEA COUNTY, NEW MEXICO**



PROVIDING SURVEYING SERVICES  
SINCE 1946  
**JOHN WEST SURVEYING COMPANY**  
412 N. DAL PASO HOBBS, N.M. 88240  
(575) 393-3117 www.jwsc.biz  
TBPLS# 10021000

Survey Date: 8/1/14	CAD Date: 8/11/14	Drawn By: ACK
W.O. No.: 14110776	Rev: .	Rel. W.O.: Sheet 1 of 1

**District I**  
 1625 N. French Dr., Hobbs, NM 88240  
 Phone:(575) 393-6161 Fax:(575) 393-0720  
**District II**  
 811 S. First St., Artesia, NM 88210  
 Phone:(575) 748-1283 Fax:(575) 748-9720  
**District III**  
 1000 Rio Brazos Rd., Aztec, NM 87410  
 Phone:(505) 334-6178 Fax:(505) 334-6170  
**District IV**  
 1220 S. St Francis Dr., Santa Fe, NM 87505  
 Phone:(505) 476-3470 Fax:(505) 476-3462

**State of New Mexico**  
**Energy, Minerals and Natural Resources**  
**Oil Conservation Division**  
**1220 S. St Francis Dr.**  
**Santa Fe, NM 87505**

Form APD Comments  
  
 Permit 192245

**PERMIT COMMENTS**

Operator Name and Address: BTA OIL PRODUCERS, LLC [260297] 104 S. Pecos Midland, TX 79701		API Number: 30-025-42122
		Well: CHISO 14 STATE 8711 #001H
Created By	Comment	Comment Date
PINSKEEP	Any potential H2S volume would be minimal concentration. No contingency plan should be required.	9/15/2014

**District I**  
 1625 N. French Dr., Hobbs, NM 88240  
 Phone:(575) 393-8161 Fax:(575) 393-0720  
**District II**  
 811 S. First St., Artesia, NM 88210  
 Phone:(575) 748-1283 Fax:(575) 748-9720  
**District III**  
 1000 Rio Brazos Rd., Aztec, NM 87410  
 Phone:(505) 334-6178 Fax:(505) 334-6170  
**District IV**  
 1220 S. St Francis Dr., Santa Fe, NM 87505  
 Phone:(505) 476-3470 Fax:(505) 476-3482

**State of New Mexico**  
**Energy, Minerals and Natural Resources**  
**Oil Conservation Division**  
**1220 S. St Francis Dr.**  
**Santa Fe, NM 87505**

Form APD Conditions

Permit 192245

**PERMIT CONDITIONS OF APPROVAL**

Operator Name and Address: BTA OIL PRODUCERS, LLC [260297] 104 S. Pecos Midland, TX 79701	API Number: 30-025-42122
	Well: CHISO 14 STATE 8711 #001H

OCD Reviewer	Condition
DMULL	Will require a directional survey with the C-104
DMULL	Once the well is spud, to prevent ground water contamination through whole or partial conduits from the surface, the operator shall drill without interruption through the fresh water zone or zones and shall immediately set in cement the water protection string
pkautz	If using a pit for drilling and completion operations, must have an approved pit from prior to spudding the well.
pkautz	1) SURFACE & INTERMEDIATE CASING - Cement must circulate to surface -- 2) PRODUCTION CASING - Cement must tie back into intermediate casing --
pkautz	If cement does not circulate to surface, must run temperature survey or other log to determine top of cement
pkautz	Surface casing minimum setting depth is 350' and at least 50' into the red beds whichever is greater