

District I
1625 N. French Dr., Hobbs, NM 88240
Phone:(575) 393-8161 Fax:(575) 393-0720
District II
811 S. First St., Artesia, NM 88210
Phone:(575) 748-1283 Fax:(575) 748-9720
District III
1000 Rio Brazos Rd., Aztec, NM 87410
Phone:(505) 334-8178 Fax:(505) 334-8170
District IV
1220 S. St Francis Dr., Santa Fe, NM 87505
Phone:(505) 476-3470 Fax:(505) 476-3482

State of New Mexico
Energy, Minerals and Natural Resources
Oil Conservation Division
1220 S. St Francis Dr.
Santa Fe, NM 87505

Form C-101
August 1, 2011
Permit 195261

APPLICATION FOR PERMIT TO DRILL, RE-ENTER, DEEPEN, PLUGBACK, OR ADD A ZONE

1. Operator Name and Address APACHE CORP 303 Veterans Airpark Lane Midland, TX 79705		2. OGRID Number 873
4. Property Code 22503		3. API Number 30-025-42249
5. Property Name NORTHEAST DRINKARD UNIT		6. Well No. 261

7. Surface Location

UL - Lot	Section	Township	Range	Lot Idn	Feet From	N/S Line	Feet From	E/W Line	County
B	2	21S	37E	10	3465	N	1685	E	Lea

8. Proposed Bottom Hole Location

UL - Lot	Section	Township	Range	Lot Idn	Feet From	N/S Line	Feet From	E/W Line	County
B	2	21S	37E	10	3465	N	1685	E	Lea

9. Pool Information

EUNICE,BLI-TU-DR, NORTH	22900
-------------------------	-------

Additional Well Information

11. Work Type New Well	12. Well Type OIL	13. Cable/Rotary	14. Lease Type Private	15. Ground Level Elevation 3498
16. Multiple N	17. Proposed Depth 7450	18. Formation Drinkard	19. Contractor	20. Spud Date
Depth to Ground water		Distance from nearest fresh water well		Distance to nearest surface water

☒ We will be using a closed-loop system in lieu of lined pits

21. Proposed Casing and Cement Program

Type	Hole Size	Casing Size	Casing Weight/ft	Setting Depth	Sacks of Cement	Estimated TOC
Surf	11	8.625	24	1486	475	
Prod	7.875	5.5	17	7450	1250	

Casing/Cement Program: Additional Comments

--

22. Proposed Blowout Prevention Program

Type	Working Pressure	Test Pressure	Manufacturer
Hydril	3000	2000	

23. I hereby certify that the information given above is true and complete to the best of my knowledge and belief. I further certify I have complied with 19.15.14.9 (A) NMAC <input checked="" type="checkbox"/> and/or 19.15.14.9 (B) NMAC <input checked="" type="checkbox"/> , if applicable. Signature: _____ Printed Name: Electronically filed by Bobby Smith Title: _____ Email Address: bobby.smith@apachecorp.com Date: 11/8/2014	<div style="text-align: center;">OIL CONSERVATION DIVISION</div> Approved By: Paul Kautz Title: Geologist Approved Date: 11/8/2014 Expiration Date: 11/8/2016 Conditions of Approval Attached
Phone: 432-818-1020	

District I
1625 N. French Dr., Hobbs, NM 88240
Phone: (575) 393-6161 Fax: (575) 393-0720
District II
811 S. First St., Artesia, NM 88210
Phone: (575) 748-1283 Fax: (575) 748-9720
District III
1000 Rio Brazos Road, Aztec, NM 87410
Phone: (505) 334-6178 Fax: (505) 334-6170
District IV
1220 S. St. Francis Dr., Santa Fe, NM 87505
Phone: (505) 476-3460 Fax: (505) 476-3462

State of New Mexico
Energy, Minerals & Natural Resources Department
OIL CONSERVATION DIVISION
1220 South St. Francis Dr.
Santa Fe, NM 87505

Form C-102
Revised August 1, 2011
Submit one copy to
appropriate
District Office

☐ AMENDED REPORT

WELL LOCATION AND ACREAGE DEDICATION PLAT

1 API Number 30-025-	2 Pool Code 22900	3 Pool Name Eunice; BLI-TU-DR, North
4 Property Code 22503	5 Property Name NORTH EAST DRINKARD UNIT	6 Well Number #261
7 OGRID No. 873	8 Operator Name APACHE CORPORATION	9 Elevation 3498.84

10 Surface Location

UL or lot no.	Section	Township	Range	Lot Idn	Feet from the	North/South line	Feet from the	East/West line	County
7	2	21 S	37 E		3,465	NORTH	1,685	EAST	LEA

11 Bottom Hole Location If Different From Surface

UL or lot no.	Section	Township	Range	Lot Idn	Feet from the	North/South line	Feet from the	East/West line	County

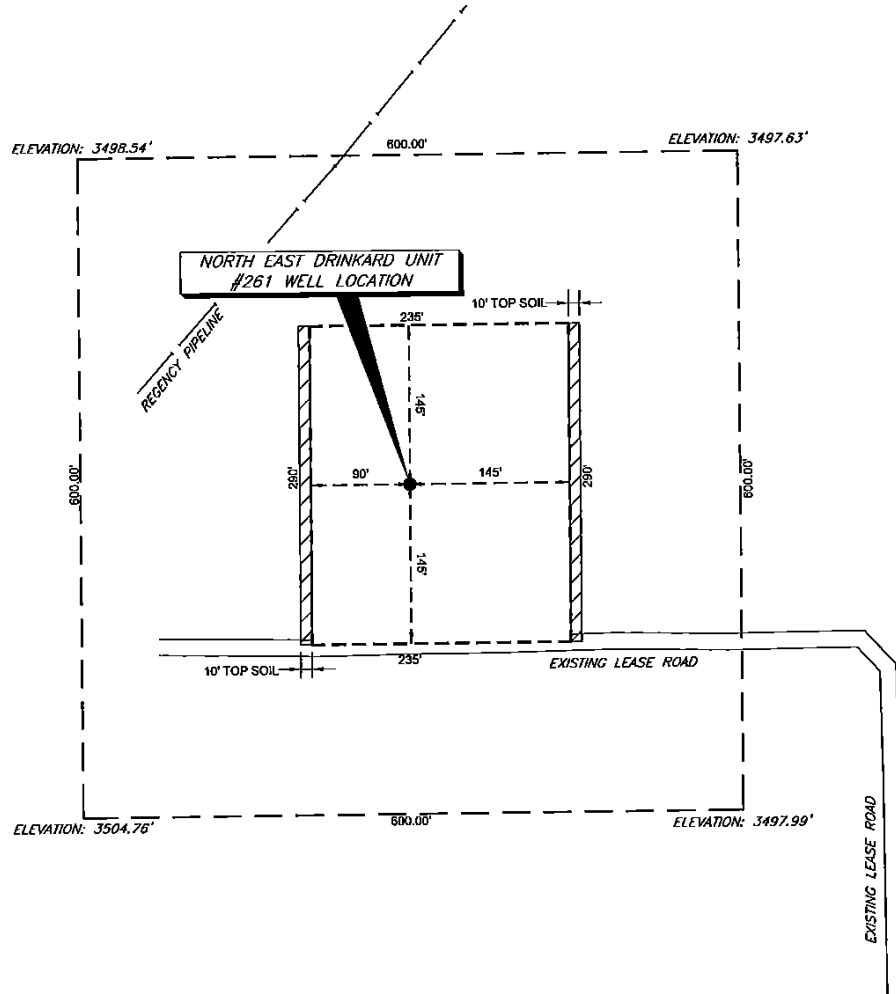
No allowable will be assigned to this completion until all interests have been consolidated or a non-standard unit has been approved by the division.

SECTION 2, TOWNSHIP 21 SOUTH, RANGE 37 EAST P.M.

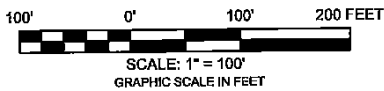
<p>FOUND 2 INCH IRON PIPE, CAPPED, DISTURBED LAT: 32.51875 N LONG: -103.141730 W NAD83 E: 88294.102 (N.A.D. 83)</p> <p>FOUND 1-1/2 INCH IRON PIPE, ALUMINUM CAPPED LAT: 32.521978 N LONG: -103.124600 W NAD83 E: 855720.983 (N.A.D. 83)</p> <p>SURFACE LOCATION DD LAT: 32.512455 N DD LONG: -103.129830 W DMS LAT: 32°30'44.837" N DMS LONG: 103°7'47.246" W NAD83 E: 855237.714 NAD83 E: 870970.739 (N.A.D. 83)</p> <p>DD LAT: 32.512523 N DD LONG: -103.130401 W DMS LAT: 32°30'45.564" N DMS LONG: 103°07'49.444" W NAD83 E: 855297.541 NAD83 E: 871054.784 (N.A.D. 83)</p> <p>FOUND 2 INCH IRON PIPE, CAPPED, DISTURBED LAT: 32.509432 N LONG: -103.141714 W NAD83 E: 847822.755 NAD83 E: 867386.629 (N.A.D. 83)</p> <p>LAT: 32.509559 N LONG: -103.142185 W NAD83 E: 847882.641 NAD83 E: 868570.543 (N.A.D. 83)</p> <p>FOUND SPIKE NAIL IN STONE MARKING BEARS S 08°18'30" W, 5278.48' AND S 89°18'00" W, 5277.53' LAT: 32.485920 N LONG: -103.141692 W NAD83 E: 842543.182 NAD83 E: 867422.119 (N.A.D. 83)</p> <p>LAT: 32.486040 N LONG: -103.142165 W NAD83 E: 842622.945 NAD83 E: 869836.387 (N.A.D. 83)</p>	<p>17 OPERATOR CERTIFICATION</p> <p>I hereby certify that the information contained herein is true and complete to the best of my knowledge and belief, and that this organization either owns a working interest or unleased mineral interest in the land including the proposed bottom hole location or has a right to drill this well at this location pursuant to a contract with an owner of such a mineral or working interest, or to a voluntary pooling agreement or a compulsory pooling order heretofore entered by the division.</p> <p><i>Michelle Cooper</i> 11-8-14 Signature Date <i>Michelle Cooper</i> Printed Name <i>michelle.cooper@apachecorp.com</i> E-mail Address</p>
<p>12 11 11 10 10 9</p> <p>13 14 14 15 15 16</p>	<p>18 SURVEYOR CERTIFICATION</p> <p>I hereby certify that the well location shown on this plat was plotted from field notes of actual surveys made by me or under my supervision, and that the same is true and correct to the best of my belief.</p> <p>10-02-2014 Date of Survey Signature and Seal of Professional Surveyor <i>Jeffery E. Hudson</i> Certificate Number 20559</p> <p>JEFFERY E. HUDSON NEW MEXICO 20559 PROFESSIONAL SURVEYOR</p>

LEA COUNTY, NEW MEXICO

SECTION TWO (2), TOWNSHIP TWENTY-ONE (21) SOUTH,
RANGE THIRTY-SEVEN (37) EAST OF THE PRINCIPAL MERIDIAN



COORDINATE TABLE				
WELL NAME	NORTHING (N.A.D. 27)	EASTING (N.A.D. 27)	NORTHING (N.A.D. 83)	EASTING (N.A.D. 83)
NEDU #261 SURFACE LOCATION & PENETRATION POINT	552237.714	870970.739	552297.341	912154.394
ELEVATION	LATITUDE (N.A.D. 27)	LONGITUDE (N.A.D. 27)	LATITUDE (N.A.D. 83)	LONGITUDE (N.A.D. 83)
3,498.54'	32.512455 N	-103.129930 W	32.512573 N	-103.130401 W



PREPARED FROM SURVEY
DATED: OCTOBER 2, 2014

NOTES:

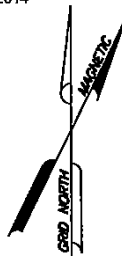
1.) BEARINGS & COORDINATES SHOWN HEREON ARE REFERENCED TO THE NEW MEXICO STATE PLANS COORDINATE SYSTEM, N.A.D. 27 & 83 DATUM (NEW MEXICO EAST ZONE) DERIVED FROM GPS OBSERVATIONS AND ARE BASED REFERENCE STATIONS - "E 148" - MALJAMAR NE (1985)

2.) LATITUDE & LONGITUDE ARE NAD 83 & 27 GEOGRAPHIC.

3.) THIS IS AN WELL PLAT AND DOES NOT REPRESENT A TRUE BOUNDARY SURVEY. THIS SURVEY IS BASED ON OWNERSHIP AND EASEMENT INFORMATION PROVIDED BY APACHE CORPORATION. SURVEYOR DID NOT ABSTRACT SUBJECT TRACT AND THERE MAY BE EASEMENTS OR OTHER ENCUMBRANCES THAT AFFECT THE SUBJECT TRACT THAT ARE NOT SHOWN HEREON.



8205 Camp Bowle West, Suite 204
Fort Worth, Texas 76116
(817) 388-0362 - Fax (882) 224-3377



THE NEDU 261 WELL LOCATION IS LOCATED
APPROXIMATELY 6.68 MILES SOUTH-SOUTHWEST OF
EUNICE, NEW MEXICO

Apache

Location of

NORTH EAST DRINKARD UNIT #261

Surface Location & Penetration Point: 3465' FNL & 1085' FEL

Section 2, Township 21 South, Range 37 East of P.M.

Lea County, New Mexico

DRAWN BY: K.C.N.	DATE: 10-8-14	DWG. NO.	REV.
CHECKED BY:	DATE:	WELLOCATION	0
SCALE: 1" = 100'	APP:	PAGE 1 OF 1	

District I
1625 N. French Dr., Hobbs, NM 88240
Phone:(575) 393-6161 Fax:(575) 393-0720
District II
811 S. First St., Artesia, NM 88210
Phone:(575) 748-1283 Fax:(575) 748-9720
District III
1000 Rio Brazos Rd., Aztec, NM 87410
Phone:(505) 334-6178 Fax:(505) 334-6170
District IV
1220 S. St Francis Dr., Santa Fe, NM 87505
Phone:(505) 476-3470 Fax:(505) 476-3482

State of New Mexico
Energy, Minerals and Natural Resources
Oil Conservation Division
1220 S. St Francis Dr.
Santa Fe, NM 87505

Form APD Comments

Permit 195261

PERMIT COMMENTS

Operator Name and Address: APACHE CORP [873] 303 Veterans Airpark Lane Midland, TX 79705	API Number: 30-025-42249
	Well: NORTHEAST DRINKARD UNIT #261

Created By	Comment	Comment Date
------------	---------	--------------

District I
 1625 N. French Dr., Hobbs, NM 88240
 Phone:(575) 393-8161 Fax:(575) 393-0720
District II
 811 S. First St., Artesia, NM 88210
 Phone:(575) 748-1283 Fax:(575) 748-9720
District III
 1000 Rio Brazos Rd., Aztec, NM 87410
 Phone:(505) 334-6178 Fax:(505) 334-6170
District IV
 1220 S. St Francis Dr., Santa Fe, NM 87505
 Phone:(505) 476-3470 Fax:(505) 476-3462

State of New Mexico
Energy, Minerals and Natural Resources
Oil Conservation Division
1220 S. St Francis Dr.
Santa Fe, NM 87505

Form APD Conditions

Permit 195261

PERMIT CONDITIONS OF APPROVAL

Operator Name and Address: APACHE CORP [873] 303 Veterans Airpark Lane Midland, TX 79705	API Number: 30-025-42249
	Well: NORTHEAST DRINKARD UNIT #261

OCD Reviewer	Condition
pkautz	Once the well is spud, to prevent ground water contamination through whole or partial conduits from the surface, the operator shall drill without interruption through the fresh water zone or zones and shall immediately set in cement the water protection string
pkautz	If using a pit for drilling and completion operations, must have an approved pit from prior to spudding the well.
pkautz	SURFACE & PRODUCTION CASING - Cement must circulate to surface
pkautz	If cement does not circulate to surface, must run temperature survey or other log to determine top of cement
pkautz	Surface casing must be set 25' below top of Rustler Anhydrite in order to seal off protectable water