

District I
1625 N. French Dr., Hobbs, NM 88240
Phone:(575) 393-8161 Fax:(575) 393-0720
District II
811 S. First St., Artesia, NM 88210
Phone:(575) 748-1283 Fax:(575) 748-9720
District III
1000 Rio Brazos Rd., Aztec, NM 87410
Phone:(505) 334-8178 Fax:(505) 334-8170
District IV
1220 S. St Francis Dr., Santa Fe, NM 87505
Phone:(505) 476-3470 Fax:(505) 476-3482

State of New Mexico
Energy, Minerals and Natural Resources
Oil Conservation Division
1220 S. St Francis Dr.
Santa Fe, NM 87505

Form C-101
August 1, 2011
Permit 201013

APPLICATION FOR PERMIT TO DRILL, RE-ENTER, DEEPEN, PLUGBACK, OR ADD A ZONE

1. Operator Name and Address KAISER-FRANCIS OIL CO PO BOX 21468 TULSA, OK 74121		2. OGRID Number 12361
4. Property Code 314339		3. API Number 30-025-42599
5. Property Name SOUTH BELL LAKE 2BSS		6. Well No. 001H

7. Surface Location

UL - Lot	P	Section	30	Township	23S	Range	34E	Lot Idn		Feet From	225	N/S Line	S	Feet From	450	E/W Line	E	County	Lea
----------	---	---------	----	----------	-----	-------	-----	---------	--	-----------	-----	----------	---	-----------	-----	----------	---	--------	-----

8. Proposed Bottom Hole Location

UL - Lot	J	Section	6	Township	24S	Range	34E	Lot Idn	J	Feet From	2310	N/S Line	N	Feet From	2220	E/W Line	E	County	Lea
----------	---	---------	---	----------	-----	-------	-----	---------	---	-----------	------	----------	---	-----------	------	----------	---	--------	-----

9. Pool Information

ANTELOPE RIDGE;BONE SPRING, WEST	2209
----------------------------------	------

Additional Well Information

11. Work Type New Well	12. Well Type OIL	13. Cable/Rotary	14. Lease Type State	15. Ground Level Elevation 3604
16. Multiple N	17. Proposed Depth 18437	18. Formation 2nd Bone Spring Sand	19. Contractor	20. Spud Date 5/1/2015
Depth to Ground water		Distance from nearest fresh water well		Distance to nearest surface water

☒ We will be using a closed-loop system in lieu of lined pits

21. Proposed Casing and Cement Program

Type	Hole Size	Casing Size	Casing Weight/ft	Setting Depth	Sacks of Cement	Estimated TOC
Surf	17.5	13.375	54.5	1400	780	0
Int1	12.25	9.625	40	6700	1733	0
Prod	8.5	5.5	20	18437	795	6600

Casing/Cement Program: Additional Comments

--

22. Proposed Blowout Prevention Program

Type	Working Pressure	Test Pressure	Manufacturer
Double Ram	5000	5000	Control Flow, Inc.

23. I hereby certify that the information given above is true and complete to the best of my knowledge and belief. I further certify I have complied with 19.15.14.9 (A) NMAC <input checked="" type="checkbox"/> and/or 19.15.14.9 (B) NMAC <input checked="" type="checkbox"/> if applicable. Signature:	OIL CONSERVATION DIVISION
Printed Name: Electronically filed by Robert Major	Approved By: Paul Kautz
Title: Manager	Title: Geologist
Email Address: BobM@KFOC.net	Approved Date: 6/1/2015 Expiration Date: 6/1/2017
Date: 6/1/2015 Phone: 918-491-4372	Conditions of Approval Attached

DISTRICT I
1625 N. French Dr., Hobbs, NM 88240
Phone: (575) 393-6161 Fax: (575) 393-0720

DISTRICT II
811 S. First St., Artesia, NM 88210
Phone: (575) 748-1283 Fax: (575) 748-9720

DISTRICT III
1000 Rio Brazos Road, Aztec, NM 87410
Phone: (505) 334-6178 Fax: (505) 334-6170

DISTRICT IV
1220 S. St. Francis Dr., Santa Fe, NM 87505
Phone: (505) 476-3460 Fax: (505) 476-3462

State of New Mexico
Energy, Minerals & Natural Resources Department
OIL CONSERVATION DIVISION
1220 South St. Francis Dr.
Santa Fe, New Mexico 87505

Form C-102
Revised August 1, 2011
Submit one copy to appropriate
District Office

AMENDED REPORT

WELL LOCATION AND ACREAGE DEDICATION PLAT

API Number	Pool Code	Pool Name
Property Code	Property Name	Well Number
OGRID No.	Operator Name	Elevation
	SOUTH BELL LAKE 2BSS	1H
	KAISER-FRANCIS OIL COMPANY	3604'

Surface Location

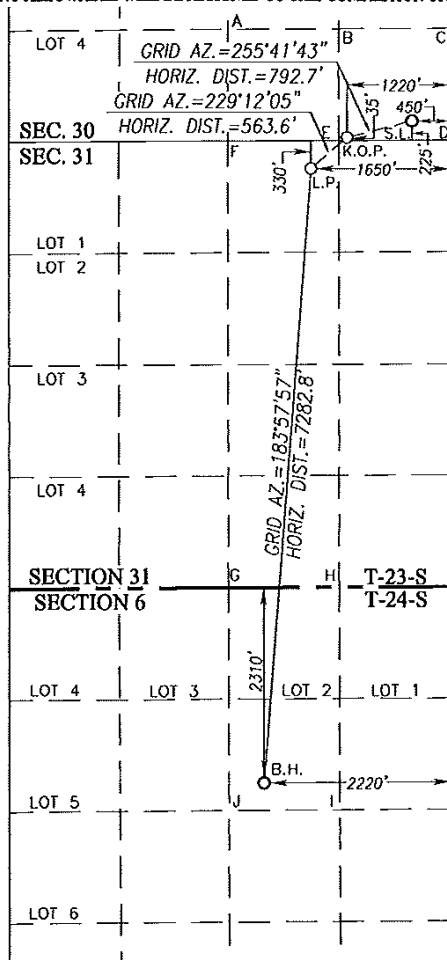
UL or lot No.	Section	Township	Range	Lot Idn	Feet from the	North/South line	Feet from the	East/West line	County
P	30	23-S	34-E		225	SOUTH	450	EAST	LEA

Bottom Hole Location If Different From Surface

UL or lot No.	Section	Township	Range	Lot Idn	Feet from the	North/South line	Feet from the	East/West line	County
G	6	24-S	34-E		2310	NORTH	2220	EAST	LEA

Dedicated Acres	Joint or Infill	Consolidation Code	Order No.

NO ALLOWABLE WILL BE ASSIGNED TO THIS COMPLETION UNTIL ALL INTERESTS HAVE BEEN CONSOLIDATED OR A NON-STANDARD UNIT HAS BEEN APPROVED BY THE DIVISION



SURFACE LOCATION	SURFACE LOCATION
NAD 27 NME	NAD 83 NME
Y= 462520.1 N	Y= 462579.3 N
X= 757089.5 E	X= 798273.2 E
LAT.=32.268846° N	LAT.=32.268970° N
LONG.=103.501575° W	LONG.=103.502053° W
KICK OFF POINT	KICK OFF POINT
NAD 27 NME	NAD 83 NME
Y= 462324.3 N	Y= 462383.5 N
X= 756321.5 E	X= 797505.1 E
LAT.=32.268324° N	LAT.=32.268448° N
LONG.=103.504064° W	LONG.=103.504543° W
LANDING POINT	LANDING POINT
NAD 27 NME	NAD 83 NME
Y= 461956.1 N	Y= 462015.3 N
X= 755894.9 E	X= 797078.6 E
LAT.=32.267321° N	LAT.=32.267445° N
LONG.=103.505453° W	LONG.=103.505932° W
BOTTOM HOLE LOCATION	BOTTOM HOLE LOCATION
NAD 27 NME	NAD 83 NME
Y= 454692.0 N	Y= 454751.0 N
X= 755395.4 E	X= 796579.2 E
LAT.=32.247365° N	LAT.=32.247489° N
LONG.=103.507250° W	LONG.=103.507728° W

CORNER COORDINATES TABLE

NAD 27 NME
A - Y= 463599.4 N, X= 754890.6 E
B - Y= 463608.4 N, X= 756210.0 E
C - Y= 463617.3 N, X= 757529.4 E
D - Y= 462298.6 N, X= 757541.5 E
E - Y= 462288.5 N, X= 756222.4 E
F - Y= 462278.5 N, X= 754903.2 E
G - Y= 456998.3 N, X= 754951.2 E
H - Y= 457008.1 N, X= 756270.3 E
I - Y= 454375.1 N, X= 756299.2 E
J - Y= 454363.8 N, X= 754979.3 E

CORNER COORDINATES TABLE

NAD 83 NME
A - Y= 463658.7 N, X= 796074.2 E
B - Y= 463667.6 N, X= 797393.6 E
C - Y= 463676.5 N, X= 798713.1 E
D - Y= 462357.7 N, X= 798725.2 E
E - Y= 462347.7 N, X= 797406.0 E
F - Y= 462337.7 N, X= 796086.8 E
G - Y= 457057.3 N, X= 796135.0 E
H - Y= 457067.2 N, X= 797454.1 E
I - Y= 454434.1 N, X= 797483.0 E
J - Y= 454422.7 N, X= 796163.2 E

OPERATOR CERTIFICATION

I hereby certify that the information herein is true and complete to the best of my knowledge and belief, and that this organization either owns a working interest or unleased mineral interest in the land including the proposed bottom hole location or has a right to drill this well at this location pursuant to a contract with an owner of such mineral or working interest, or to a voluntary pooling agreement or a compulsory pooling order heretofore entered by the division.

Signature: *Steve Dowdy* Date: *6/1/15*

Printed Name: **Steve Dowdy**
E-mail Address: **trimanres@sbcglobal.net**

SURVEYOR CERTIFICATION

I hereby certify that the well location shown on this plat was plotted from field notes of actual surveys made by me or under my supervision, and that the same is true and correct to the best of my belief.

JANUARY 8, 2015

Date of Survey
Signature & Seal of Professional Surveyor:



Certificate Number: **12641**
Signature: *Ronald J. Eidson*
ACK REL. W.O. 14111403 JWSC W.O. 15.13.0603

District I
 1625 N. French Dr., Hobbs, NM 88240
 Phone:(575) 393-8161 Fax:(575) 393-0720
District II
 811 S. First St., Artesia, NM 88210
 Phone:(575) 748-1283 Fax:(575) 748-9720
District III
 1000 Rio Brazos Rd., Aztec, NM 87410
 Phone:(505) 334-8178 Fax:(505) 334-6170
District IV
 1220 S. St Francis Dr., Santa Fe, NM 87505
 Phone:(505) 476-3470 Fax:(505) 476-3482

State of New Mexico
Energy, Minerals and Natural Resources
Oil Conservation Division
1220 S. St Francis Dr.
Santa Fe, NM 87505

Form APD Comments

Permit 201013

PERMIT COMMENTS

Operator Name and Address: KAISER-FRANCIS OIL CO [12361] PO BOX 21468 TULSA , OK 74121	API Number: 30-025-42599
	Well: SOUTH BELL LAKE 2BSS #001H

Created By	Comment	Comment Date
pkautz	I am denying this APD due to the bottom hole location being at the end of your project area. I can approve the APD with the following changes. BHLOC no more than 2420 FNL and your last perf no more than 2310 FNL .	3/24/2015
pkautz		3/24/2015

District I
 1625 N. French Dr., Hobbs, NM 88240
 Phone:(575) 393-8161 Fax:(575) 393-0720
District II
 811 S. First St., Artesia, NM 88210
 Phone:(575) 748-1283 Fax:(575) 748-9720
District III
 1000 Rio Brazos Rd., Aztec, NM 87410
 Phone:(505) 334-6178 Fax:(505) 334-6170
District IV
 1220 S. St Francis Dr., Santa Fe, NM 87505
 Phone:(505) 476-3470 Fax:(505) 476-3482

State of New Mexico
Energy, Minerals and Natural Resources
Oil Conservation Division
1220 S. St Francis Dr.
Santa Fe, NM 87505

Form APD Conditions

Permit 201013

PERMIT CONDITIONS OF APPROVAL

Operator Name and Address: KAISER-FRANCIS OIL CO [12361] PO BOX 21468 TULSA , OK 74121	API Number: 30-025-42599
	Well: SOUTH BELL LAKE 2BSS #001H

OCD Reviewer	Condition
pkautz	Will require a directional survey with the C-104
pkautz	Once the well is spud, to prevent ground water contamination through whole or partial conduits from the surface, the operator shall drill without interruption through the fresh water zone or zones and shall immediately set in cement the water protection string
pkautz	If using a pit for drilling and completion operations, must have an approved pit from prior to spudding the well.
pkautz	1) SURFACE & INTERMEDIATE CASING - Cement must circulate to surface -- 2) PRODUCTION CASING - Cement must tie back into intermediate casing --
pkautz	If cement does not circulate to surface, must run temperature survey or other log to determine top of cement
pkautz	Surface casing must be set 25' below top of Rustler Anhydrite in order to seal off protectable water