

District I
1625 N. French Dr., Hobbs, NM 88240
Phone:(505) 393-8161 Fax:(505) 393-0720
District II
811 S. First St., Artesia, NM 88210
Phone:(505) 748-1283 Fax:(505) 748-9720
District III
1000 Rio Brazos Rd., Aztec, NM 87410
Phone:(505) 334-8178 Fax:(505) 334-8170
District IV
1220 S. St Francis Dr., Santa Fe, NM 87505
Phone:(505) 476-3470 Fax:(505) 476-3482

State of New Mexico
Energy, Minerals and Natural Resources
Oil Conservation Division
1220 S. St Francis Dr.
Santa Fe, NM 87505

Form C-101
August 1, 2011
Permit 207922

APPLICATION FOR PERMIT TO DRILL, RE-ENTER, DEEPEN, PLUGBACK, OR ADD A ZONE

1. Operator Name and Address MATADOR PRODUCTION COMPANY One Lincoln Centre Dallas, TX 75240		2. OGRID Number 228937
		3. API Number 30-025-42719
4. Property Code 315060	5. Property Name CONINE 03-20S-35E RN	6. Well No. 121H

7. Surface Location

UL - Lot D	Section 3	Township 20S	Range 35E	Lot Idn D	Feet From 340	N/S Line N	Feet From 261	E/W Line W	County Lea
---------------	--------------	-----------------	--------------	--------------	------------------	---------------	------------------	---------------	---------------

8. Proposed Bottom Hole Location

UL - Lot A	Section 3	Township 20S	Range 35E	Lot Idn A	Feet From 330	N/S Line N	Feet From 240	E/W Line E	County Lea
---------------	--------------	-----------------	--------------	--------------	------------------	---------------	------------------	---------------	---------------

9. Pool Information

PEARL BONE SPRING, SOUTH	49685
--------------------------	-------

Additional Well Information

11. Work Type New Well	12. Well Type OIL	13. Cable/Rotary	14. Lease Type Private	15. Ground Level Elevation 3687
16. Multiple N	17. Proposed Depth 15000	18. Formation 2nd Bone Spring Sand	19. Contractor	20. Spud Date 10/16/2015
Depth to Ground water		Distance from nearest fresh water well		Distance to nearest surface water

☒ We will be using a closed-loop system in lieu of lined pits

21. Proposed Casing and Cement Program

Type	Hole Size	Casing Size	Casing Weight/ft	Setting Depth	Sacks of Cement	Estimated TOC
Surf	17.5	13.375	54.5	1950	1591	0
Int1	12.25	9.625	40	5800	1700	0
Prod	8.75	5.5	20	15000	2138	4800

Casing/Cement Program: Additional Comments

--

22. Proposed Blowout Prevention Program

Type	Working Pressure	Test Pressure	Manufacturer
Annular	5000	3000	CAMERON
Double Ram	10000	5000	CAMERON
Pipe	10000	5000	CAMERON

23. I hereby certify that the information given above is true and complete to the best of my knowledge and belief. I further certify I have complied with 19.15.14.9 (A) NMAC <input checked="" type="checkbox"/> and/or 19.15.14.9 (B) NMAC <input checked="" type="checkbox"/> if applicable. Signature: Printed Name: Electronically filed by Dana Arnold Title: Staff Attorney Email Address: darnold@matadorresources.com Date: 7/30/2015	<div style="text-align: center;">OIL CONSERVATION DIVISION</div> Approved By: Paul Kautz Title: Geologist Approved Date: 8/4/2015 Expiration Date: 8/4/2017 Conditions of Approval Attached
Phone: 972-371-5284	

District I
1625 N. French Dr., Hobbs, NM 88240
Phone: (575) 393-6161 Fax: (575) 393-0720
District II
811 S. First St., Artesia, NM 88210
Phone: (575) 748-1283 Fax: (575) 748-9720
District III
1000 Rio Brazos Road, Aztec, NM 87410
Phone: (505) 334-6178 Fax: (505) 334-6170
District IV
1220 S. St. Francis Dr., Sante Fe, NM 87505
Phone: (505) 476-3460 Fax: (505) 476-3462

State of New Mexico
Energy, Minerals & Natural Resources
Department
OIL CONSERVATION DIVISION
1220 South St. Francis Dr.
Sante Fe, NM 87505

FORM C-102
Revised August 1, 2011
Submit one copy to appropriate
District Office

☐ AMENDED REPORT

WELL LOCATION AND ACREAGE DEDICATION PLAT

¹ API Number		² Pool Code 49685		³ Pool Name Parole Bone Springs South	
⁴ Property Code		⁵ Property Name CONINE 03-20S-35E RN			⁶ Well Number #121H
⁷ GRID No. 228937		⁸ Operator Name MATADOR PRODUCTION COMPANY			⁹ Elevation 3687'

¹⁰Surface Location

UL or lot no.	Section	Township	Range	Lot Idn	Feet from the	North/South line	Feet from the	East/West line	County
D	3	20-S	35-E	-	340'	NORTH	261'	WEST	LEA

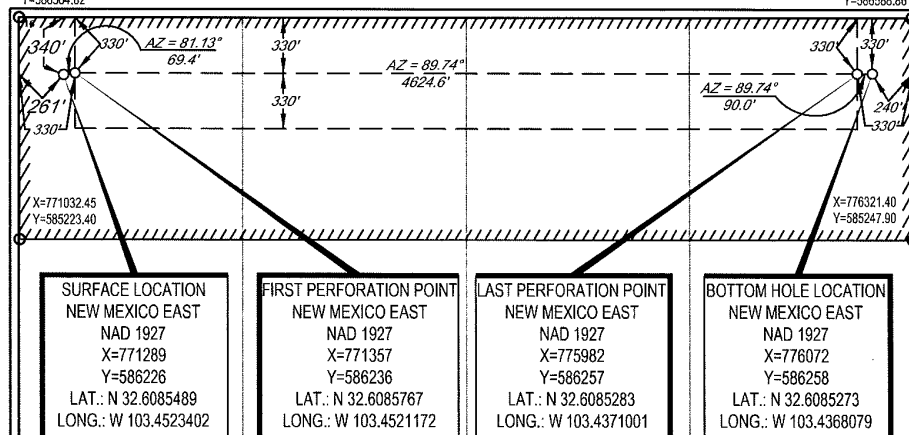
UL or lot no.	Section	Township	Range	Lot Idn	Feet from the	North/South line	Feet from the	East/West line	County
A	3	20-S	35-E	-	330'	NORTH	240'	EAST	LEA

¹² Dedicated Acres 160.00	¹³ Joint or Infill	¹⁴ Consolidation Code	¹⁵ Order No.
---	-------------------------------	----------------------------------	-------------------------

No allowable will be assigned to this completion until all interests have been consolidated or a non-standard unit has been approved by the division.

X=771025.50
Y=586564.82

X=776308.66
Y=586588.86



SURFACE LOCATION
NEW MEXICO EAST
NAD 1927
X=771289
Y=586226
LAT.: N 32.6085489
LONG.: W 103.4523402

FIRST PERFORATION POINT
NEW MEXICO EAST
NAD 1927
X=771357
Y=586236
LAT.: N 32.6085767
LONG.: W 103.4521172

LAST PERFORATION POINT
NEW MEXICO EAST
NAD 1927
X=775982
Y=586257
LAT.: N 32.6085283
LONG.: W 103.4371001

BOTTOM HOLE LOCATION
NEW MEXICO EAST
NAD 1927
X=776072
Y=586258
LAT.: N 32.6085273
LONG.: W 103.4368079

¹⁷OPERATOR CERTIFICATION

I hereby certify that the information contained herein is true and complete to the best of my knowledge and belief, and that this organization either owns a working interest or unleased mineral interest in the land including the proposed bottom hole location or has a right to drill this well at this location pursuant to a contract with an owner of such a mineral or working interest, or to a voluntary pooling agreement or a compulsory pooling order heretofore entered by the division.

Signature: *Samuel Pryor, Jr.* Date: 7-28-15

Printed Name: Samuel Pryor, Jr.

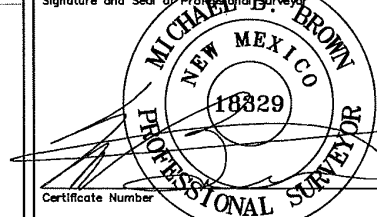
E-mail Address: spryor@matadorresources.com

¹⁸SURVEYOR CERTIFICATION

I hereby certify that the well location shown on this plat was plotted from field notes of actual surveys made by me or under my supervision, and that the same is true to the best of my belief.

7/14/2015

Date of Survey
Signature and Seal of Professional Surveyor



Certificate Number

District I
1625 N. French Dr., Hobbs, NM 88240
Phone:(575) 393-6161 Fax:(575) 393-0720
District II
811 S. First St., Artesia, NM 88210
Phone:(575) 748-1283 Fax:(575) 748-9720
District III
1000 Rio Brazos Rd., Aztec, NM 87410
Phone:(505) 334-6178 Fax:(505) 334-6170
District IV
1220 S. St Francis Dr., Santa Fe, NM 87505
Phone:(505) 476-3470 Fax:(505) 476-3482

State of New Mexico
Energy, Minerals and Natural Resources
Oil Conservation Division
1220 S. St Francis Dr.
Santa Fe, NM 87505

Form APD Comments

Permit 207922

PERMIT COMMENTS

Operator Name and Address: MATADOR PRODUCTION COMPANY [228937] One Lincoln Centre Dallas, TX 75240	API Number: 30-025-42719
	Well: CONINE 03-20S-35E RN #121H

Created By	Comment	Comment Date
------------	---------	--------------

District I
 1625 N. French Dr., Hobbs, NM 88240
 Phone:(575) 393-8161 Fax:(575) 393-0720
District II
 811 S. First St., Artesia, NM 88210
 Phone:(575) 748-1283 Fax:(575) 748-9720
District III
 1000 Rio Brazos Rd., Aztec, NM 87410
 Phone:(505) 334-8178 Fax:(505) 334-6170
District IV
 1220 S. St Francis Dr., Santa Fe, NM 87505
 Phone:(505) 476-3470 Fax:(505) 476-3482

State of New Mexico
Energy, Minerals and Natural Resources
Oil Conservation Division
1220 S. St Francis Dr.
Santa Fe, NM 87505

Form APD Conditions

Permit 207922

PERMIT CONDITIONS OF APPROVAL

Operator Name and Address: MATADOR PRODUCTION COMPANY [228937] One Lincoln Centre Dallas, TX 75240	API Number: 30-025-42719
	Well: CONINE 03-20S-35E RN #121H

OCD Reviewer	Condition
pkautz	Will require a directional survey with the C-104
pkautz	Once the well is spud, to prevent ground water contamination through whole or partial conduits from the surface, the operator shall drill without interruption through the fresh water zone or zones and shall immediately set in cement the water protection string
pkautz	If using a pit for drilling and completion operations, must have an approved pit from prior to spudding the well.
pkautz	1) SURFACE & INTERMEDIATE CASING - Cement must circulate to surface -- 2) PRODUCTION CASING - Cement must tie back into intermediate casing --
pkautz	If cement does not circulate to surface, must run temperature survey or other log to determine top of cement
pkautz	Surface casing must be set 25' below top of Rustler Anhydrite in order to seal off protectable water
pkautz	Must notify OCD Hobbs Office if lost circulation is encountered at 575-370-3186
pkautz	1) Must notify OCD Hobbs Office prior to running Stage Tool at 575-370-3186 2) If using Stage Tool on Surface casing, Stage Tool must be set greater than 350' from surface and a minimum of 200 feet above surface shoe. 3) When using a Stage Tool on Intermediate or Production Casing Stage must be a minimum of 50 feet below previous casing shoe.