

**District I**  
1625 N. French Dr., Hobbs, NM 88240  
Phone:(575) 393-8161 Fax:(575) 393-0720  
**District II**  
811 S. First St., Artesia, NM 88210  
Phone:(575) 748-1283 Fax:(575) 748-9720  
**District III**  
1000 Rio Brazos Rd., Aztec, NM 87410  
Phone:(505) 334-8178 Fax:(505) 334-8170  
**District IV**  
1220 S. St Francis Dr., Santa Fe, NM 87505  
Phone:(505) 476-3470 Fax:(505) 476-3482

**State of New Mexico**  
**Energy, Minerals and Natural Resources**  
**Oil Conservation Division**  
**1220 S. St Francis Dr.**  
**Santa Fe, NM 87505**

Form C-101  
August 1, 2011  
Permit 209595

**APPLICATION FOR PERMIT TO DRILL, RE-ENTER, DEEPEN, PLUGBACK, OR ADD A ZONE**

1. Operator Name and Address APACHE CORP 303 Veterans Airpark Lane Midland, TX 79705		2. OGRID Number 873
4. Property Code 315275		3. API Number 30-025-42806
5. Property Name QUILMES 29 STATE		6. Well No. 004H

**7. Surface Location**

UL - Lot	M	Section	29	Township	10S	Range	37E	Lot Idn	M	Feet From	245	N/S Line	S	Feet From	660	E/W Line	W	County	Lea
----------	---	---------	----	----------	-----	-------	-----	---------	---	-----------	-----	----------	---	-----------	-----	----------	---	--------	-----

**8. Proposed Bottom Hole Location**

UL - Lot	M	Section	20	Township	10S	Range	37E	Lot Idn	M	Feet From	825	N/S Line	S	Feet From	660	E/W Line	W	County	Lea
----------	---	---------	----	----------	-----	-------	-----	---------	---	-----------	-----	----------	---	-----------	-----	----------	---	--------	-----

**9. Pool Information**

WILDCAT;SAN ANDRES	97839
--------------------	-------

**Additional Well Information**

11. Work Type New Well	12. Well Type OIL	13. Cable/Rotary	14. Lease Type State	15. Ground Level Elevation 3955
16. Multiple N	17. Proposed Depth 10700	18. Formation San Andres	19. Contractor	20. Spud Date
Depth to Ground water		Distance from nearest fresh water well		Distance to nearest surface water

☒ We will be using a closed-loop system in lieu of lined pits

**21. Proposed Casing and Cement Program**

Type	Hole Size	Casing Size	Casing Weight/ft	Setting Depth	Sacks of Cement	Estimated TOC
Surf	12.25	8.625	24	2260	1110	0
Prod	7.875	5.5	17	10700	1930	0

**Casing/Cement Program: Additional Comments**

--

**22. Proposed Blowout Prevention Program**

Type	Working Pressure	Test Pressure	Manufacturer
Double Ram	2000	3000	DOUBLE RAM

23. I hereby certify that the information given above is true and complete to the best of my knowledge and belief. I further certify I have complied with 19.15.14.9 (A) NMAC <input checked="" type="checkbox"/> and/or 19.15.14.9 (B) NMAC <input checked="" type="checkbox"/> , if applicable.  Signature: _____ Printed Name: Electronically filed by Bobby Smith Title: _____ Email Address: bobby.smith@apachecorp.com Date: 9/23/2015	<div style="text-align: center;"><b>OIL CONSERVATION DIVISION</b></div> Approved By: Paul Kautz Title: Geologist Approved Date: 9/24/2015 Expiration Date: 9/24/2017 Conditions of Approval Attached
Phone: 432-818-1020	

District I  
1625 N. French Dr., Hobbs, NM 88240  
Phone: (575) 393-6161 Fax: (575) 393-0720  
District II  
811 S. First St., Artesia, NM 88210  
Phone: (575) 748-1283 Fax: (575) 748-9720  
District III  
1000 Rio Brazos Road, Aztec, NM 87410  
Phone: (505) 334-6178 Fax: (505) 334-6170  
District IV  
1220 S. St. Francis Dr., Santa Fe, NM 87505  
Phone: (505) 476-3460 Fax: (505) 476-3462

State of New Mexico  
Energy, Minerals & Natural Resources Department  
OIL CONSERVATION DIVISION  
1220 South St. Francis Dr.  
Santa Fe, NM 87505

Form C-102  
Revised August 1, 2011  
Submit one copy to appropriate  
District Office

☐ AMENDED REPORT

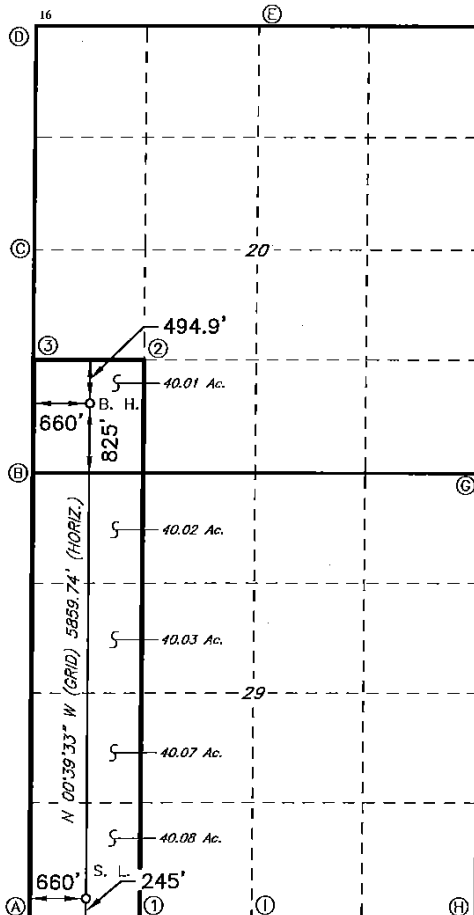
WELL LOCATION AND ACREAGE DEDICATION PLAT

1 API Number		2 Pool Code	3 Pool Name
		98156	WC-025 G-01 S103729m; San Andres
4 Property Code	5 Property Name		6 Well Number
	QUILMES STATE 29		4H
7 OGRID NO.	8 Operator Name		9 Elevation
873	APACHE CORPORATION		3955'

10 Surface Location									
UL or lot no.	Section	Township	Range	Lot Idn	Feet from the	North/South line	Feet From the	East/West line	County
M	29	10S	37E		245	SOUTH	660	WEST	LEA

11 Bottom Hole Location If Different From Surface									
UL or lot no.	Section	Township	Range	Lot Idn	Feet from the	North/South line	Feet from the	East/West line	County
M	20	10S	37E		825	SOUTH	660	WEST	LEA
12 Dedicated Acres		13 Joint or Infill		14 Consolidation Code		15 Order No.			
200.21									

No allowable will be assigned to this completion until all interest have been consolidated or a non-standad unit has been approved by the division.



**17 OPERATOR CERTIFICATION**  
I hereby certify that the information contained herein is true and complete to the best of my knowledge and belief, and that this organization either owns a working interest or unleased mineral interest in the land including the proposed bottom hole location or has a right to drill this well at this location pursuant to a contract with an owner of such a mineral or working interest, or to a voluntary pooling agreement or a compulsory pooling order heretofore entered by the division.

**18 SURVEYOR CERTIFICATION**  
I hereby certify that the well location shown on this plat was plotted from field notes of actual surveys made by me or under my supervision, and that the same is true and correct to the best of my belief.

8-24-2015  
Date of Survey

Signature and Seal of Professional Surveyor

19680  
Certificate Number

**GEODETIC DATA**  
NAD 27 GRID - NM EAST

**SURFACE LOCATION**  
N 879157.1 - E 851601.2  
LAT: 33.41145220° N  
LONG: 103.18114912° W

**BOTTOM HOLE**  
N 885015.7 - E 851533.8  
LAT: 33.42755311  
LONG: 103.18115731

**CORNER DATA**  
NAD 27 GRID - NM EAST

A: FOUND LIMESTONE  
N 878905.3 - E 850944.2

B: FOUND LIMESTONE  
N 884183.5 - E 850883.4

C: FOUND LIMESTONE  
N 886822.8 - E 850853.0

D: FOUND CAP "PLS 14405"  
N 889463.6 - E 850824.4

E: FOUND LIMESTONE ROCK  
N 889490.8 - E 853460.8

F: FOUND CAP "PLS 14405"  
N 889520.0 - E 856099.5

G: FOUND CAP "PLS 14405"  
N 884242.4 - E 856166.4

H: FOUND LIMESTONE ROCK  
N 878967.1 - E 856219.3

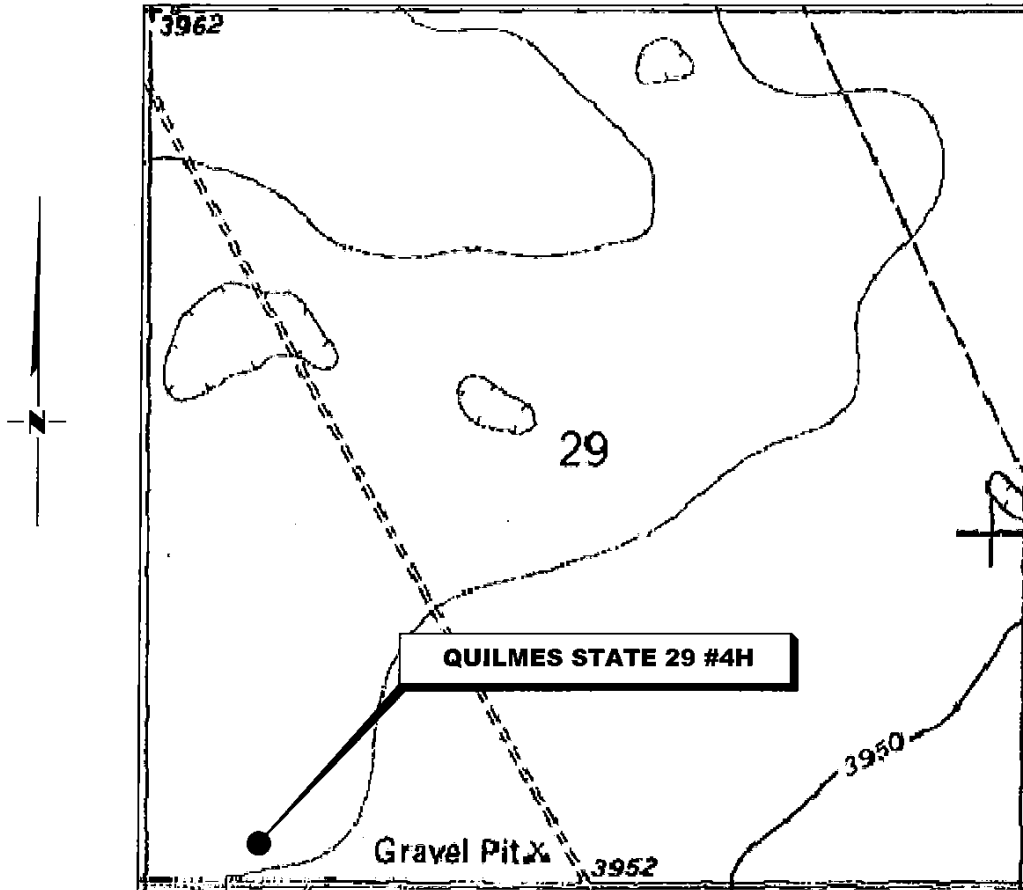
I: FOUND LIMESTONE ROCK  
N 878932.5 - E 853582.3

1: CALCULATED POINT  
N 878918.9 - E 852263.3

2: CALCULATED POINT  
N 885517.8 - E 852188.5

3: CALCULATED POINT  
N 885503.1 - E 850868.2

# LOCATION VERIFICATION MAP



*Tatum is located approx. 13.2 miles to the Southwest*

**SECTION 29, TWP. 10 SOUTH, RGE. 37 EAST,  
N. M. P. M., LEA CO., NEW MEXICO**

OPERATOR: Apache Corporation  
LEASE: Quilmes State 29  
WELL NO.: 4H  
ELEVATION: 3955'

LOCATION: 245' FSL & 660' FWL  
CONTOUR INTERVAL: 10'  
USGS TOPO. SOURCE MAP:  
Walking Cane Ranch, NM (1984)

Firm No.: TX 10193838 NM 4655451

Copyright 2015 - All Rights Reserved

NO.	REVISION	DATE
JOB NO.:	LS1508489	
DWG. NO.:	1508489LVM	

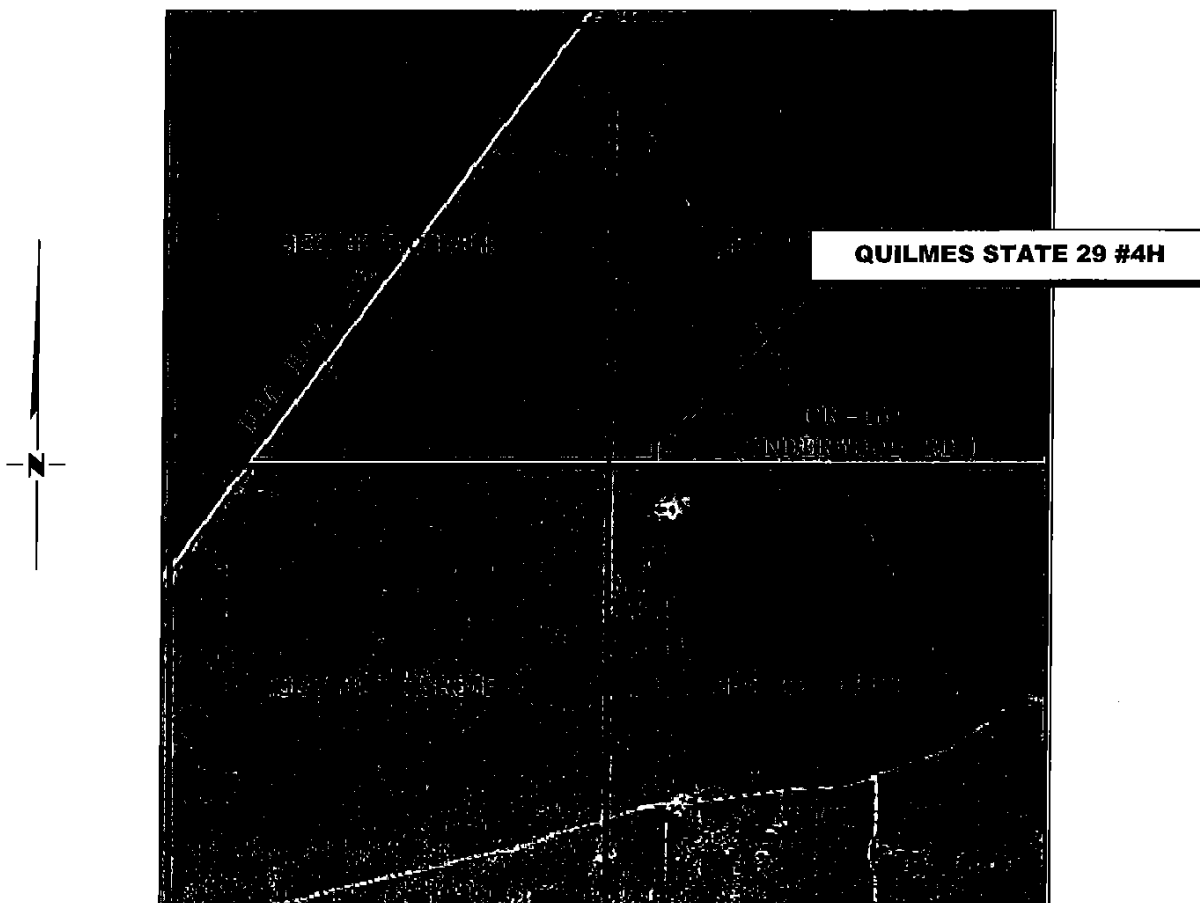
## RRC

308 W. BROADWAY ST., HOBBS, NM 88240 (575) 964-8200

SCALE: 1000'  
DATE: 8-24-2015  
SURVEYED BY: BK/CE  
DRAWN BY: CMJ  
APPROVED BY: RMH  
SHEET : 1 OF 1

# VICINITY MAP

NOT TO SCALE



*SECTION 29, TWP. 10 SOUTH, RGE. 37 EAST,  
N. M. P. M., LEA CO., NEW MEXICO*

OPERATOR: Apache Corporation  
LEASE: Quilmes State 29  
WELL NO.: 4H

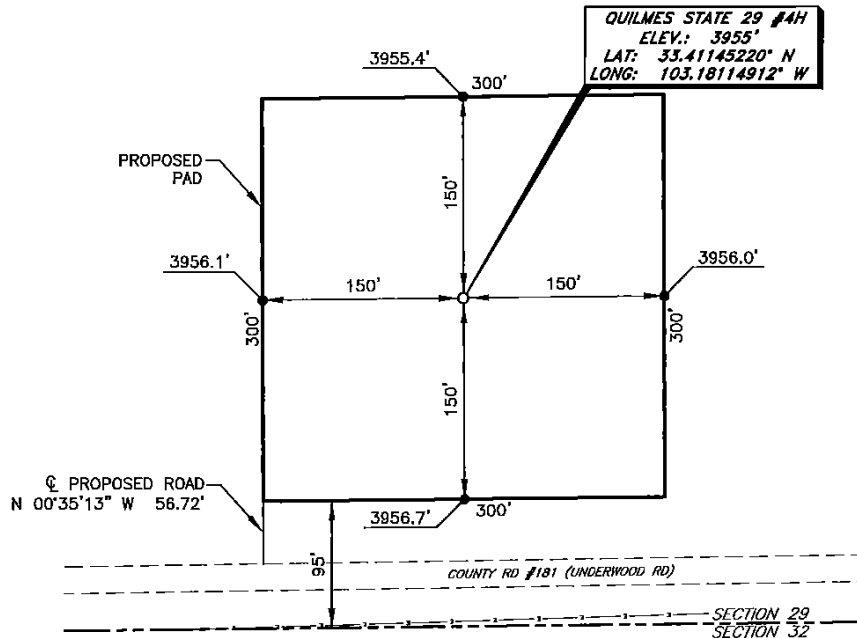
LOCATION: 245' FSL & 660' FWL  
ELEVATION: 3955'

Firm No.: TX 10193838 NM 4655451

Copyright 2014 - All Rights Reserved

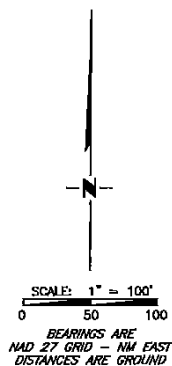
<div style="text-align: center;"> <h1>RRC</h1> <p>308 W. BROADWAY ST., HOBBS, NM 88240 (575) 964-8200</p> </div>			SCALE: NTS
			DATE: 8-24-2015
			SURVEYED BY: BK/CE
			DRAWN BY: CMJ
NO.	REVISION	DATE	APPROVED BY: RMH
JOB NO.: LS1508489			SHEET : 1 OF 1
DWG. NO.: 1508489VM			

APACHE CORPORATION  
 QUILMES STATE 29 #4H  
 (245' FSL & 660' FWL)  
 SECTION 29, T10S, R37E  
 N. M. P. M., LEA COUNTY, NEW MEXICO



DIRECTIONS TO LOCATION

From the intersection of N.M. Hwy. 125 and CR-181 (Underwood Rd.)  
 Go East on CR-181 approx. 1.0 miles to a proposed road on the left;  
 Turn left and go North approx. 207 feet to location on the right.



Firm No.: TX 10193838 NM 4655451

Copyright 2014 - All Rights Reserved

NO.	REVISION	DATE
JOB NO.:	LS1508489	
DWG. NO.:	1508489PAD	

**RRC**

308 W. BROADWAY ST., HOBBS, NM 88240 (575) 964-8200

SCALE: 1" = 100'
DATE: 8-24-2015
SURVEYED BY: BK/CE
DRAWN BY: CMJ
APPROVED BY: RMH
SHEET : 1 OF 1

**District I**  
 1625 N. French Dr., Hobbs, NM 88240  
 Phone:(575) 393-8161 Fax:(575) 393-0720  
**District II**  
 811 S. First St., Artesia, NM 88210  
 Phone:(575) 748-1283 Fax:(575) 748-9720  
**District III**  
 1000 Rio Brazos Rd., Aztec, NM 87410  
 Phone:(505) 334-6178 Fax:(505) 334-6170  
**District IV**  
 1220 S. St Francis Dr., Santa Fe, NM 87505  
 Phone:(505) 476-3470 Fax:(505) 476-3482

**State of New Mexico**  
**Energy, Minerals and Natural Resources**  
**Oil Conservation Division**  
**1220 S. St Francis Dr.**  
**Santa Fe, NM 87505**

Form APD Comments  
  
 Permit 209595

**PERMIT COMMENTS**

Operator Name and Address: APACHE CORP [873] 303 Veterans Airpark Lane Midland, TX 79705	API Number: 30-025-42806
	Well: QUILMES 29 STATE #004H

Created By	Comment	Comment Date
susanb	THIS WELL WILL HAVE A 7.875" PILOT HOLE DRILLED TO A DEPTH OF 5450'.	9/10/2015
susanb	ACREAGE FOR THIS WELL IS 200.21 ACCORDING TO NEW SURVEY CERTIFIED BY RRC SURVEYORS.	9/23/2015

**District I**  
1625 N. French Dr., Hobbs, NM 88240  
Phone:(575) 393-8161 Fax:(575) 393-0720  
**District II**  
811 S. First St., Artesia, NM 88210  
Phone:(575) 748-1283 Fax:(575) 748-9720  
**District III**  
1000 Rio Brazos Rd., Aztec, NM 87410  
Phone:(505) 334-6178 Fax:(505) 334-6170  
**District IV**  
1220 S. St Francis Dr., Santa Fe, NM 87505  
Phone:(505) 476-3470 Fax:(505) 476-3482

**State of New Mexico**  
**Energy, Minerals and Natural Resources**  
**Oil Conservation Division**  
**1220 S. St Francis Dr.**  
**Santa Fe, NM 87505**

Form APD Conditions

Permit 209595

**PERMIT CONDITIONS OF APPROVAL**

Operator Name and Address: APACHE CORP [873] 303 Veterans Airpark Lane Midland, TX 79705	API Number: 30-025-42806
	Well: QUILMES 29 STATE #004H

OCD Reviewer	Condition
pkautz	Will require a directional survey with the C-104
pkautz	Once the well is spud, to prevent ground water contamination through whole or partial conduits from the surface, the operator shall drill without interruption through the fresh water zone or zones and shall immediately set in cement the water protection string
pkautz	If using a pit for drilling and completion operations, must have an approved pit from prior to spudding the well.
pkautz	SURFACE & PRODUCTION CASING - Cement must circulate to surface
pkautz	Surface casing must be set 25' below top of Rustler Anhydrite in order to seal off protectable water
pkautz	Must notify OCD Hobbs Office if lost circulation is encountered at 575-370-3186