

District I
1625 N. French Dr., Hobbs, NM 88240
Phone:(575) 393-8161 Fax:(575) 393-0720
District II
811 S. First St., Artesia, NM 88210
Phone:(575) 748-1283 Fax:(575) 748-9720
District III
1000 Rio Brazos Rd., Aztec, NM 87410
Phone:(505) 334-8178 Fax:(505) 334-8170
District IV
1220 S. St Francis Dr., Santa Fe, NM 87505
Phone:(505) 476-3470 Fax:(505) 476-3482

State of New Mexico
Energy, Minerals and Natural Resources
Oil Conservation Division
1220 S. St Francis Dr.
Santa Fe, NM 87505

Form C-101
August 1, 2011
Permit 209648

APPLICATION FOR PERMIT TO DRILL, RE-ENTER, DEEPEN, PLUGBACK, OR ADD A ZONE

1. Operator Name and Address APACHE CORP 303 Veterans Airpark Lane Midland, TX 79705		2. OGRID Number 873
4. Property Code 315280		3. API Number 30-025-42809
5. Property Name FIRE EAGLE 10 STATE		6. Well No. 001H

7. Surface Location

UL - Lot	Section	Township	Range	Lot Idn	Feet From	N/S Line	Feet From	E/W Line	County
H	10	10S	36E	H	2500	N	660	E	Lea

8. Proposed Bottom Hole Location

UL - Lot	Section	Township	Range	Lot Idn	Feet From	N/S Line	Feet From	E/W Line	County
A	3	10S	36E	1	475	N	660	E	Lea

9. Pool Information

WC-025 G-01 S103610H;SAN ANDRES	98155
---------------------------------	-------

Additional Well Information

11. Work Type New Well	12. Well Type OIL	13. Cable/Rotary	14. Lease Type State	15. Ground Level Elevation 4008
16. Multiple N	17. Proposed Depth 12100	18. Formation San Andres	19. Contractor	20. Spud Date
Depth to Ground water		Distance from nearest fresh water well		Distance to nearest surface water

☒ We will be using a closed-loop system in lieu of lined pits

21. Proposed Casing and Cement Program

Type	Hole Size	Casing Size	Casing Weight/ft	Setting Depth	Sacks of Cement	Estimated TOC
Surf	12.25	8.625	24	2215	1110	0
Prod	7.875	5.5	17	12100	2095	0

Casing/Cement Program: Additional Comments

--

22. Proposed Blowout Prevention Program

Type	Working Pressure	Test Pressure	Manufacturer
Double Ram	2000	3000	DOUBLE RAM

23. I hereby certify that the information given above is true and complete to the best of my knowledge and belief. I further certify I have complied with 19.15.14.9 (A) NMAC <input checked="" type="checkbox"/> and/or 19.15.14.9 (B) NMAC <input checked="" type="checkbox"/> , if applicable. Signature: _____ Printed Name: Electronically filed by Bobby Smith Title: _____ Email Address: bobby.smith@apachecorp.com Date: 9/28/2015	<div style="text-align: center;">OIL CONSERVATION DIVISION</div> Approved By: Paul Kautz Title: Geologist Approved Date: 9/28/2015 Expiration Date: 9/28/2017 Conditions of Approval Attached
Phone: 432-818-1020	

District I
1625 N. French Dr., Hobbs, NM 88240
Phone: (575) 393-6161 Fax: (575) 393-0720
District II
811 S. First St., Artesia, NM 88210
Phone: (575) 748-1283 Fax: (575) 748-9720
District III
1000 Rio Brazos Road, Aztec, NM 87410
Phone: (505) 334-6178 Fax: (505) 334-6170
District IV
1220 S. St. Francis Dr., Santa Fe, NM 87505
Phone: (505) 476-3460 Fax: (505) 476-3462

State of New Mexico
Energy, Minerals & Natural Resources Department
OIL CONSERVATION DIVISION
1220 South St. Francis Dr.
Santa Fe, NM 87505

Form C-102
Revised August 1, 2011
Submit one copy to appropriate
District Office

☐ AMENDED REPORT

WELL LOCATION AND ACREAGE DEDICATION PLAT

1 API Number		2 Pool Code 98155		3 Pool Name WC-025 G-01 S103610H; San Andres	
4 Property Code		5 Property Name FIRE EAGLE STATE 10			6 Well Number 1H
7 OGRID NO. 873		8 Operator Name APACHE CORPORATION			9 Elevation 4008'

10 Surface Location

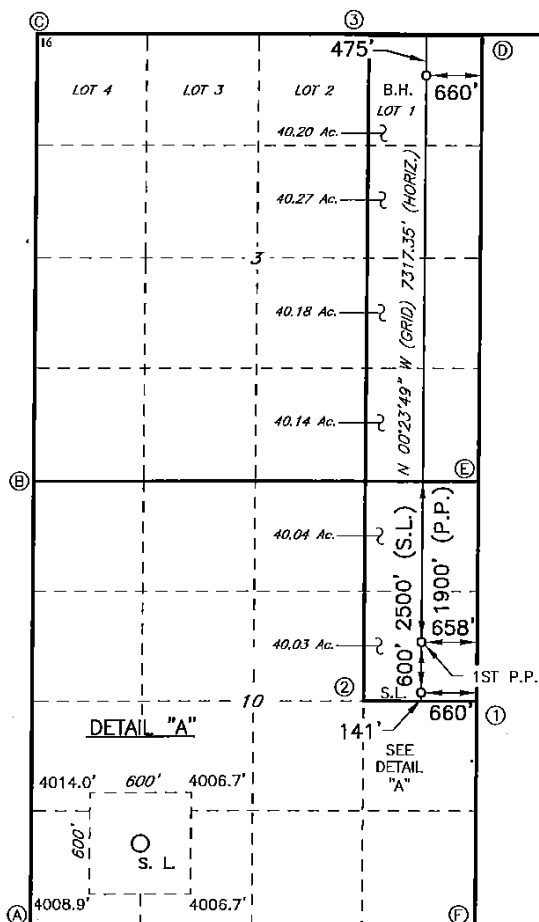
UL or lot no.	Section	Township	Range	Lot Idn	Feet from the	North/South line	Feet from the	East/West line	County
H	10	10S	36E		2500	NORTH	660	EAST	LEA

11 Bottom Hole Location If Different From Surface

UL or lot no.	Section	Township	Range	Lot Idn	Feet from the	North/South line	Feet from the	East/West line	County
1	3	10S	36E		475	NORTH	660	EAST	LEA

12 Dedicated Acres 240.86	13 Joint or Infill	14 Consolidation Code	15 Order No.
-------------------------------------	--------------------	-----------------------	--------------

No allowable will be assigned to this completion until all interest have been consolidated or a non-standard unit has been approved by the division.



GEODETIC DATA
NAD 27 GRID - NM EAST
SURFACE LOCATION (S.L.)
N 897341.5 - E 834245.4
LAT: 33.46193729° N
LONG: 103.23738608° W
1ST PERFORATION POINT (1ST P.P.)
N 897941.4 - E 834241.2

BOTTOM HOLE (B.H.)
N 904657.5 - E 834194.7
LAT: 33.48204251° N
LONG: 103.23729922° W

CORNER DATA
NAD 27 GRID - NM EAST
A: FOUND LIMESTONE
N 894508.8 - E 829658.4

B: FOUND 1/2" REBAR
N 899790.0 - E 829594.1

C: FOUND 1/2" REBAR
N 905056.9 - E 829549.0

D: FOUND 1/2" REBAR
N 905143.1 - E 834852.2

E: FOUND LIMESTONE
N 899848.3 - E 834877.9

F: FOUND 1/2" REBAR
N 894567.7 - E 834935.7

1: CALCULATED POINT
N 897208.0 - E 834906.8

2: CALCULATED POINT
N 897193.4 - E 833586.6

3: CALCULATED POINT
N 905121.6 - E 833526.4

17 OPERATOR CERTIFICATION

I hereby certify that the information contained herein is true and complete to the best of my knowledge and belief, and that this organization either owns a working interest or unleased mineral interest in the land including the proposed bottom hole location or has a right to drill this well at this location pursuant to a contract with an owner of such a mineral or working interest, or to a voluntary pooling agreement or a compulsory pooling order heretofore entered by the division.

Susan Blakemore 9/23/2015
Signature Date

Susan Blakemore
Printed Name

susan.blakemore@apachecorp.com
E-mail Address

18 SURVEYOR CERTIFICATION

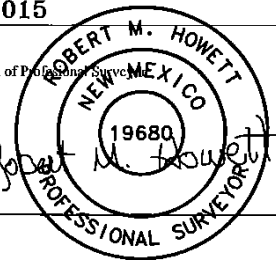
I hereby certify that the well location shown on this plat was plotted from field notes of actual surveys made by me or under my supervision, and that the same is true and correct to the best of my belief.

8-18-2015

Date of Survey

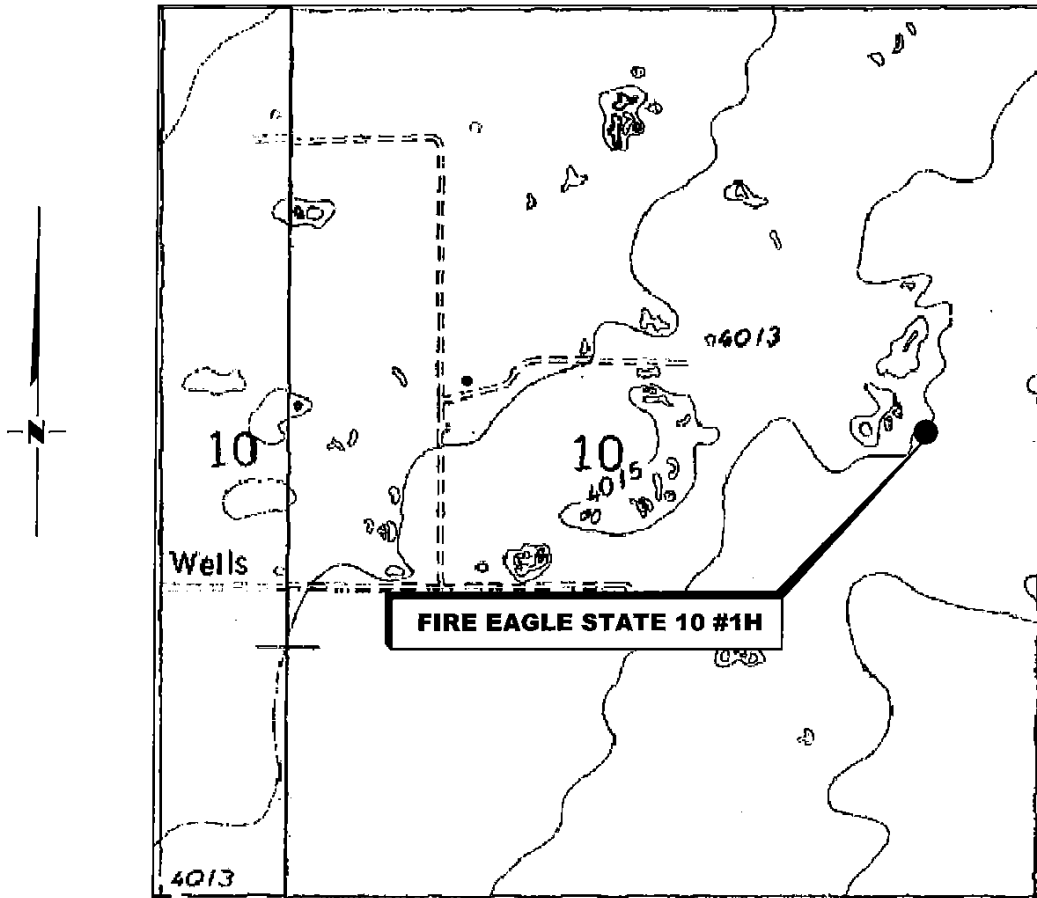
Signature and Seal of Professional Surveyor

19680
Certificate Number



RRC - Firm No.: TX 1019383B NM 4655451 - Job No.: LS1508454

LOCATION VERIFICATION MAP



Tatum is located approx. 14.9 miles to the Southwest

**SECTION 10, TWP. 10 SOUTH, RGE. 36 EAST,
N. M. P. M., LEA CO., NEW MEXICO**

OPERATOR: Apache Corporation
LEASE: Fire Eagle State 10
WELL NO.: 1H
ELEVATION: 4008'

LOCATION: 2500' FNL & 660' FEL
CONTOUR INTERVAL: 10'
USGS TOPO. SOURCE MAP:
Walking Cane Ranch, NM (1984)

Firm No.: TX 10193838 NM 4655451

Copyright 2015 - All Rights Reserved

NO.	REVISION	DATE
JOB NO.:	LS1508454	
DWG. NO.:	1508454LVM	

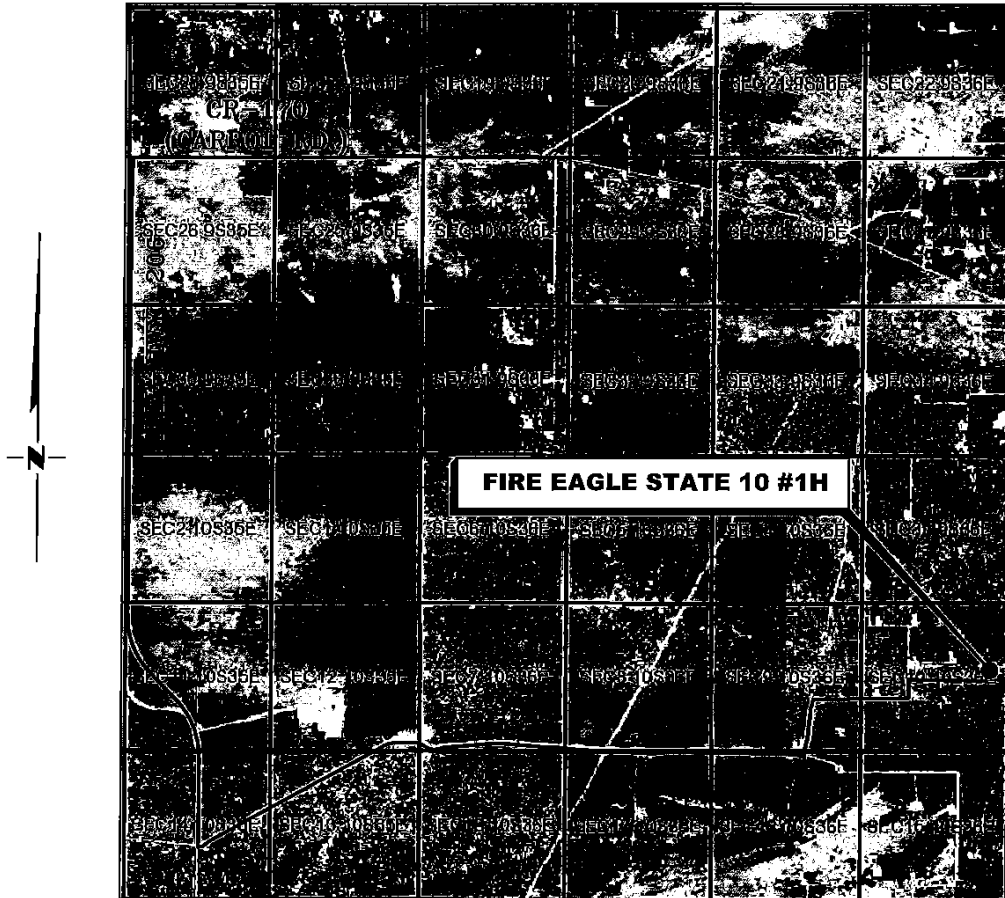
RRC

308 W. BROADWAY ST., HOBBS, NM 88240 (575) 964-8200

SCALE: 1000'
DATE: 8-18-2015
SURVEYED BY: ML/ER
DRAWN BY: CMJ
APPROVED BY: RMH
SHEET : 1 OF 1

VICINITY MAP

NOT TO SCALE



*SECTION 10, TWP. 10 SOUTH, RGE. 36 EAST,
N. M. P. M., LEA CO., NEW MEXICO*

OPERATOR: Apache Corporation
LEASE: Fire Eagle State 10
WELL NO.: 1H

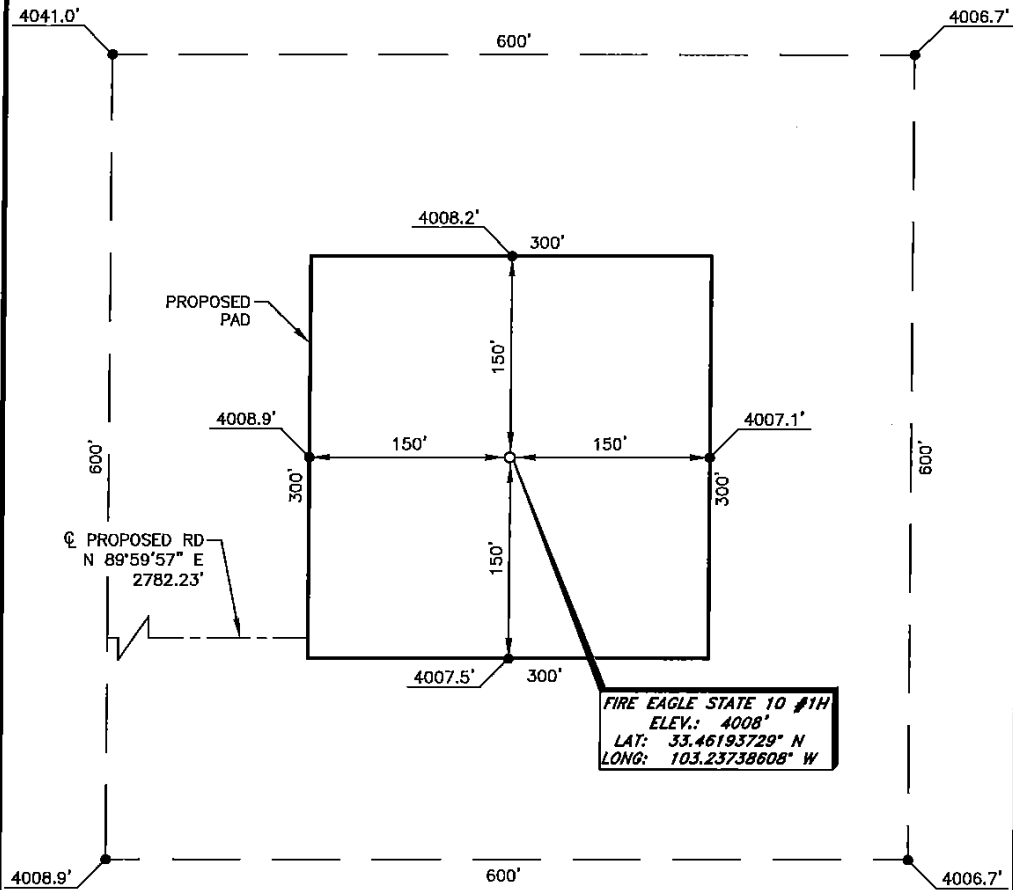
LOCATION: 2500' FNL & 660' FEL
ELEVATION: 4008'

Firm No.: TX 10193838 NM 4655451

Copyright 2014 - All Rights Reserved

<div style="text-align: center;"> <h1>RRC</h1> <p>308 W. BROADWAY ST., HOBBS, NM 88240 (575) 964-8200</p> </div>			SCALE: NTS
			DATE: 8-18-2015
			SURVEYED BY: ML/ER
			DRAWN BY: CMJ
NO.	REVISION	DATE	APPROVED BY: RMH
JOB NO.: LS1508454			SHEET : 1 OF 1
DWG. NO.: 1508454VM			

APACHE CORPORATION
 FIRE EAGLE STATE 10 #1H
 (2500' FNL & 660' FEL)
 SECTION 10, T10S, R36E
 N. M. P. M., LEA COUNTY, NEW MEXICO



DIRECTIONS TO LOCATION

From the intersection of N.M. Hwy. 206 and CR-170 (Carrol Rd.)
 Go South on N.M. Hwy. 206 approx. 4.8 miles to a lease road on the left;
 Turn left and go East approx. 4.3 miles to a lease road on the left;
 Turn left and go North approx. 0.4 miles to a lease road on the right;
 Turn right and go East approx. 0.6 miles to a lease road on the left;
 Turn left and go North approx. 0.1 miles to a proposed road on the right;
 Turn right and go East approx. 0.5 miles to location on the left.

SCALE: 1" = 100'
 0 50 100
 BEARINGS ARE
 NAD 27 GRID - NM EAST
 DISTANCES ARE GROUND

Firm No.: TX 10193838 NM 4655451

Copyright 2014 - All Rights Reserved

NO.	REVISION	DATE
JOB NO.: LS1508454		
DWG. NO.: 1508454PAD		

RRC

308 W. BROADWAY ST., HOBBS, NM 88240 (575) 964-8200

SCALE: 1" = 100'

DATE: 8-18-2015

SURVEYED BY: ML/ER

DRAWN BY: CMJ

APPROVED BY: RMH

SHEET : 1 OF 1

District I
 1625 N. French Dr., Hobbs, NM 88240
 Phone:(575) 393-8161 Fax:(575) 393-0720
District II
 811 S. First St., Artesia, NM 88210
 Phone:(575) 748-1283 Fax:(575) 748-9720
District III
 1000 Rio Brazos Rd., Aztec, NM 87410
 Phone:(505) 334-6178 Fax:(505) 334-6170
District IV
 1220 S. St Francis Dr., Santa Fe, NM 87505
 Phone:(505) 476-3470 Fax:(505) 476-3462

State of New Mexico
Energy, Minerals and Natural Resources
Oil Conservation Division
1220 S. St Francis Dr.
Santa Fe, NM 87505

Form APD Comments

 Permit 209648

PERMIT COMMENTS

Operator Name and Address: APACHE CORP [873] 303 Veterans Airpark Lane Midland, TX 79705		API Number: 30-025-42809
		Well: FIRE EAGLE 10 STATE #001H
Created By	Comment	Comment Date
susanb	THIS WELL WILL HAVE A 7.875" PILOT HOLE DRILLED TO A DEPTH OF 5300'.	9/10/2015
susanb	ACREAGE FOR THIS WELL IS 240.86 ACCORDING TO NEW SURVEY CERTIFIED BY RRC SURVEYORS.	9/23/2015

District I
 1625 N. French Dr., Hobbs, NM 88240
 Phone:(575) 393-8161 Fax:(575) 393-0720
District II
 811 S. First St., Artesia, NM 88210
 Phone:(575) 748-1283 Fax:(575) 748-9720
District III
 1000 Rio Brazos Rd., Aztec, NM 87410
 Phone:(505) 334-8178 Fax:(505) 334-6170
District IV
 1220 S. St Francis Dr., Santa Fe, NM 87505
 Phone:(505) 476-3470 Fax:(505) 476-3482

State of New Mexico
Energy, Minerals and Natural Resources
Oil Conservation Division
1220 S. St Francis Dr.
Santa Fe, NM 87505

Form APD Conditions

Permit 209648

PERMIT CONDITIONS OF APPROVAL

Operator Name and Address: APACHE CORP [873] 303 Veterans Airpark Lane Midland, TX 79705	API Number: 30-025-42809
	Well: FIRE EAGLE 10 STATE #001H

OCD Reviewer	Condition
pkautz	Will require a directional survey with the C-104
pkautz	Once the well is spud, to prevent ground water contamination through whole or partial conduits from the surface, the operator shall drill without interruption through the fresh water zone or zones and shall immediately set in cement the water protection string
pkautz	If using a pit for drilling and completion operations, must have an approved pit from prior to spudding the well.
pkautz	If cement does not circulate to surface, must run temperature survey or other log to determine top of cement
pkautz	Must notify OCD Hobbs Office if lost circulation is encountered at 575-370-3186
pkautz	1) Must notify OCD Hobbs Office prior to running Stage Tool at 575-370-3186 2) If using Stage Tool on Surface casing, Stage Tool must be set greater than 350' from surface and a minimum of 200 feet above surface shoe. 3) When using a Stage Tool on Intermediate or Production Casing Stage must be a minimum of 50 feet below previous casing shoe.