

District I
1625 N. French Dr., Hobbs, NM 88240
Phone:(575) 393-8161 Fax:(575) 393-0720
District II
811 S. First St., Artesia, NM 88210
Phone:(575) 748-1283 Fax:(575) 748-9720
District III
1000 Rio Brazos Rd., Aztec, NM 87410
Phone:(505) 334-8178 Fax:(505) 334-8170
District IV
1220 S. St Francis Dr., Santa Fe, NM 87505
Phone:(505) 476-3470 Fax:(505) 476-3482

State of New Mexico
Energy, Minerals and Natural Resources
Oil Conservation Division
1220 S. St Francis Dr.
Santa Fe, NM 87505

Form C-101
August 1, 2011
Permit 212229

APPLICATION FOR PERMIT TO DRILL, RE-ENTER, DEEPEN, PLUGBACK, OR ADD A ZONE

1. Operator Name and Address APACHE CORP 303 Veterans Airpark Lane Midland, TX 79705		2. OGRID Number 873
4. Property Code 315636		3. API Number 30-025-42923
5. Property Name PACIFICO 16 STATE		6. Well No. 001H

7. Surface Location

UL - Lot	Section	Township	Range	Lot Idn	Feet From	N/S Line	Feet From	E/W Line	County
D	16	10S	36E	D	200	N	660	W	Lea

8. Proposed Bottom Hole Location

UL - Lot	Section	Township	Range	Lot Idn	Feet From	N/S Line	Feet From	E/W Line	County
E	21	10S	36E	E	2140	N	660	W	Lea

9. Pool Information

WC-025 G-01 S103610H;SAN ANDRES	98155
---------------------------------	-------

Additional Well Information

11. Work Type New Well	12. Well Type OIL	13. Cable/Rotary	14. Lease Type State	15. Ground Level Elevation 4026
16. Multiple N	17. Proposed Depth 12000	18. Formation San Andres	19. Contractor	20. Spud Date
Depth to Ground water		Distance from nearest fresh water well		Distance to nearest surface water

☒ We will be using a closed-loop system in lieu of lined pits

21. Proposed Casing and Cement Program

Type	Hole Size	Casing Size	Casing Weight/ft	Setting Depth	Sacks of Cement	Estimated TOC
Surf	12.25	8.625	24	2230	1140	
Prod	7.875	5.5	17	12000	2000	

Casing/Cement Program: Additional Comments

--

22. Proposed Blowout Prevention Program

Type	Working Pressure	Test Pressure	Manufacturer
Double Ram	2000	3000	

23. I hereby certify that the information given above is true and complete to the best of my knowledge and belief. I further certify I have complied with 19.15.14.9 (A) NMAC <input checked="" type="checkbox"/> and/or 19.15.14.9 (B) NMAC <input checked="" type="checkbox"/> , if applicable. Signature: _____ Printed Name: Electronically filed by Bobby Smith Title: _____ Email Address: bobby.smith@apachecorp.com Date: 11/5/2015	<div style="text-align: center;">OIL CONSERVATION DIVISION</div> Approved By: Paul Kautz Title: Geologist Approved Date: 11/5/2015 Expiration Date: 11/5/2017 Conditions of Approval Attached
Phone: 432-818-1020	

District I
1625 N. French Dr., Hobbs, NM 88240
Phone: (575) 393-6161 Fax: (575) 393-0720
District II
811 S. First St., Artesia, NM 88210
Phone: (575) 748-1283 Fax: (575) 748-9720
District III
1000 Rio Brazos Road, Aztec, NM 87410
Phone: (505) 334-6178 Fax: (505) 334-6170
District IV
1220 S. St. Francis Dr., Santa Fe, NM 87505
Phone: (505) 476-3460 Fax: (505) 476-3462

State of New Mexico
Energy, Minerals & Natural Resources Department
OIL CONSERVATION DIVISION
1220 South St. Francis Dr.
Santa Fe, NM 87505

Form C-102
Revised August 1, 2011
Submit one copy to appropriate
District Office

☐ AMENDED REPORT

WELL LOCATION AND ACREAGE DEDICATION PLAT

¹ API Number		² Pool Code 98155		³ Pool Name WC-025 G-01 S103610H; San Andres	
⁴ Property Code		⁵ Property Name PACIFICO STATE 16			⁶ Well Number 001H
⁷ GRID NO. 873		⁸ Operator Name APACHE CORPORATION			⁹ Elevation 4026'

¹⁰ Surface Location									
UL or lot no.	Section	Township	Range	Lot Idn	Feet from the	North/South line	Feet from the	East/West line	County
D	16	10S	36E		200	NORTH	660	WEST	LEA

¹¹ Bottom Hole Location If Different From Surface									
UL or lot no.	Section	Township	Range	Lot Idn	Feet from the	North/South line	Feet from the	East/West line	County
E	21	10S	36E		2140	NORTH	660	WEST	LEA

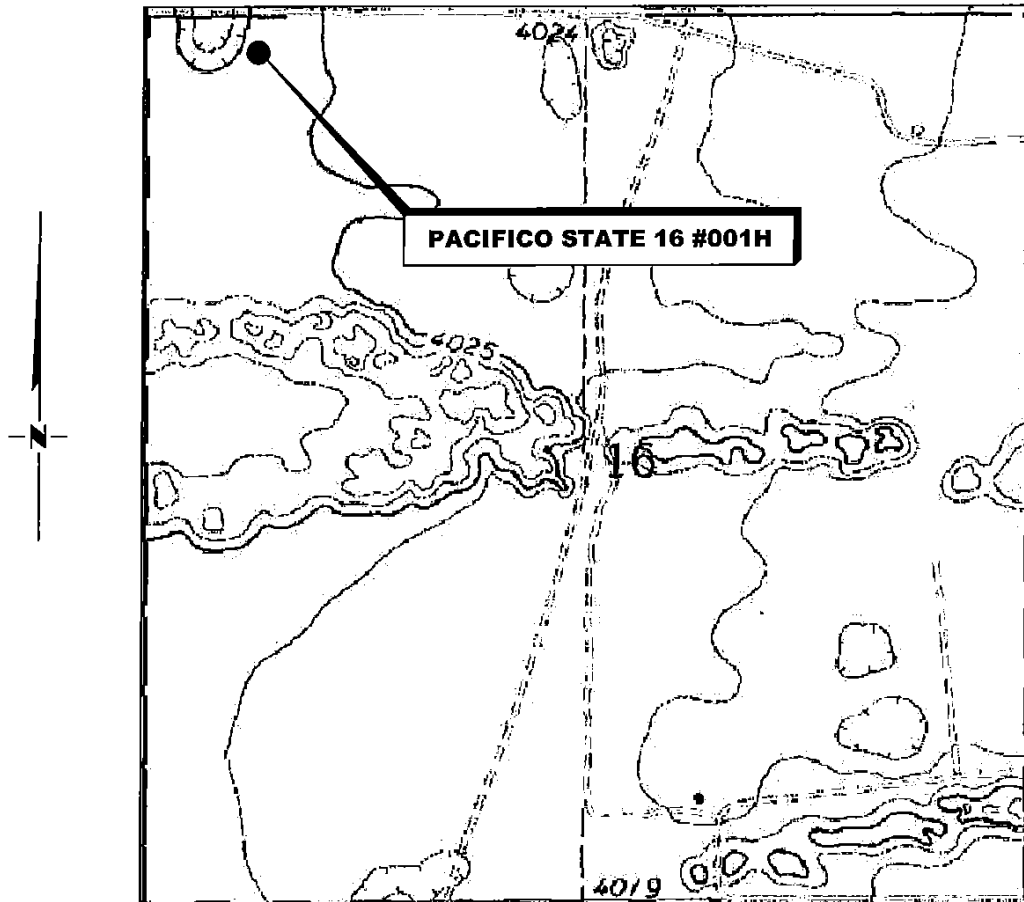
¹² Dedicated Acres	¹³ Joint or Infill	¹⁴ Consolidation Code	¹⁵ Order No.

No allowable will be assigned to this completion until all interest have been consolidated or a non-standard unit has been approved by the division.

	<p>GEODETIC DATA NAD 27 GRID — NM EAST</p> <p>SURFACE LOCATION (S.L.) PENETRATION POINT (P.P.) N 894260.6 — E 825033.6</p> <p>LAT: 33.45373462° N LONG: 103.26768945° W</p> <p>FIRST TAKE POINT (F.T.P.) N 893685.8 — E 825039.9</p> <p>LAT: 33.45215453° N LONG: 103.26768814° W</p> <p>BOTTOM HOLE (B.H.) LAST TAKE POINT (L.T.P.) N 887042.7 — E 825111.6</p> <p>LAT: 33.43389759° N LONG: 103.26767627° W</p> <p>CORNER DATA NAD 27 GRID — NM EAST</p> <p>A: CALCULATED CORNER N 883896.9 — E 824484.9</p> <p>B: FOUND LIMESTONE ROCK 10"x 7"x 10" AG N 889175.5 — E 824429.1</p> <p>C: FOUND LIMESTONE ROCK 13"x 6"x 12" MARKED 4 SLASHES SOUTH/4 SLASHES EAST N 894453.7 — E 824371.5</p> <p>D: FOUND LIMESTONE ROCK 1"x 4"x 6" AG N 894508.8 — E 829658.4</p> <p>E: FOUND LIMESTONE ROCK 35"x 12"x 24" N 889229.6 — E 829716.0</p> <p>F: CALCULATED CORNER N 883950.9 — E 829767.0</p> <p>1: CALCULATED POINT N 886536.2 — E 824457.0</p> <p>2: CALCULATED POINT N 886549.7 — E 825778.1</p> <p>3: CALCULATED POINT N 894473.5 — E 825687.5</p>	<p>¹⁷ OPERATOR CERTIFICATION</p> <p><i>I hereby certify that the information contained herein is true and complete to the best of my knowledge and belief, and that this organization either owns a working interest or unleased mineral interest in the land including the proposed bottom hole location or has a right to drill this well at this location pursuant to a contract with an owner of such a mineral or working interest, or to a voluntary pooling agreement or a compulsory pooling order heretofore entered by the division.</i></p> <p><i>Margaret Drennan</i> 11-3-15 Signature Margaret Drennan Printed Name margaret.drennan@apachecorp.com E-mail Address</p> <p>¹⁸ SURVEYOR CERTIFICATION</p> <p><i>I hereby certify that the well location shown on this plat was plotted from field notes of actual surveys made by me or under my supervision, and that the same is true and correct to the best of my belief.</i></p> <p>10-13-2015 Date of Survey Signature and Seal of Independent Surveyor 19680 Certificate Number</p>
--	---	---

RRC — Firm No.: TX 10193838 NM 4655451 — Job No.: LS1510563

LOCATION VERIFICATION MAP



(Tatum, NM, is located approx. 13.8 miles to the Southwest.)

**SECTION 16, TWP. 10 SOUTH, RGE. 36 EAST,
N. M. P. M., LEA CO., NEW MEXICO**

OPERATOR: Apache Corporation
LEASE: Pacifico State 16
WELL NO.: 001H
ELEVATION: 4026'

LOCATION: 200' FNL & 660' FWL
CONTOUR INTERVAL: 10'
USGS TOPO. SOURCE MAP:
Range Lake, NM (1984)

Firm No.: TX 10193838 NM 4655451

Copyright 2015 - All Rights Reserved

NO.	REVISION	DATE
JOB NO.:	LS1510563	
DWG. NO.:	1510563LVM	

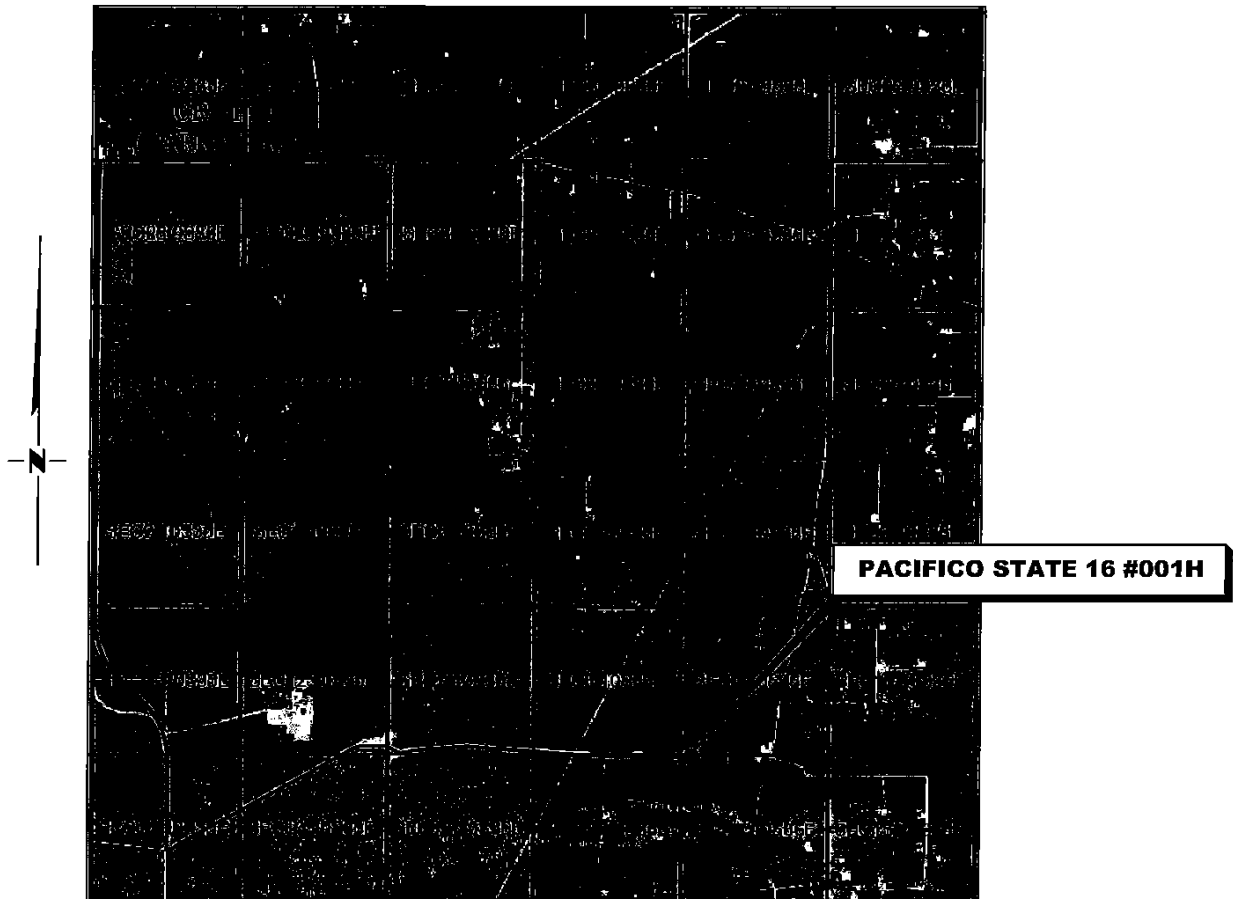
RRC

308 W. BROADWAY ST., HOBBS, NM 88240 (575) 964-8200

SCALE: 1000'
DATE: 10-13-2015
SURVEYED BY: BK/CG
DRAWN BY: LPS
APPROVED BY: RMH
SHEET : 1 OF 1

VICINITY MAP

NOT TO SCALE



*SECTION 16, TWP. 10 SOUTH, RGE. 36 EAST,
N. M. P. M., LEA CO., NEW MEXICO*

OPERATOR: Apache Corporation
LEASE: Pacifico State 16
WELL NO.: 001H

LOCATION: 200' FNL & 660' FWL
ELEVATION: 4026'

Firm No.: TX 10193838 NM 4655451

Copyright 2014 - All Rights Reserved

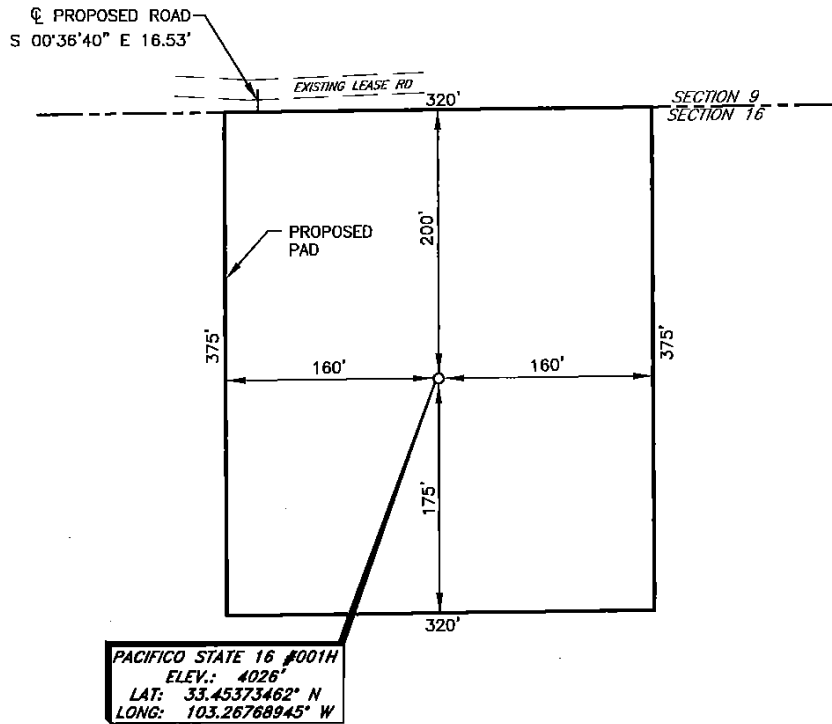
NO.	REVISION	DATE
JOB NO.:	LS1510563	
DWG. NO.:	1510563VM	

RRC

308 W. BROADWAY ST., HOBBS, NM 88240 (575) 964-8200

SCALE:	NTS
DATE:	10-13-2015
SURVEYED BY:	BK/CG
DRAWN BY:	LPS
APPROVED BY:	RMH
SHEET :	1 OF 1

APACHE CORPORATION
PACIFICO STATE 16 #001H
(200' FNL & 660' FWL)
SECTION 16, T10S, R36E
N. M. P. M., LEA COUNTY, NEW MEXICO



DIRECTIONS TO LOCATION

From the intersection of N.M. Hwy. 206 and CR-170 (Carrol Rd.)
Go South on N.M. Hwy. 206 approx. 4.8 miles to a lease road on the left;
Turn left and go East approx. 3.8 miles to location on the right.

SCALE: 1" = 100'
0 50 100
BEARINGS ARE
NAD 27 GRID - NM EAST
DISTANCES ARE GROUND

Firm No.: TX 10193838 NM 4655451

Copyright 2014 - All Rights Reserved

NO.	REVISION	DATE
JOB NO.:	LS1510563	
DWG. NO.:	1510563PAD	

RRC

308 W. BROADWAY ST., HOBBS, NM 88240 (575) 964-8200

SCALE: 1" = 100'
DATE: 10-13-2015
SURVEYED BY: BK/CG
DRAWN BY: LPS
APPROVED BY: RMH
SHEET : 1 OF 1

District I
1625 N. French Dr., Hobbs, NM 88240
Phone:(575) 393-6161 Fax:(575) 393-0720
District II
811 S. First St., Artesia, NM 88210
Phone:(575) 748-1283 Fax:(575) 748-9720
District III
1000 Rio Brazos Rd., Aztec, NM 87410
Phone:(505) 334-6178 Fax:(505) 334-6170
District IV
1220 S. St Francis Dr., Santa Fe, NM 87505
Phone:(505) 476-3470 Fax:(505) 476-3462

State of New Mexico
Energy, Minerals and Natural Resources
Oil Conservation Division
1220 S. St Francis Dr.
Santa Fe, NM 87505

Form APD Comments

Permit 212229

PERMIT COMMENTS

Operator Name and Address: APACHE CORP [873] 303 Veterans Airpark Lane Midland, TX 79705	API Number: 30-025-42923
	Well: PACIFICO 16 STATE #001H

Created By	Comment	Comment Date
margaretd	This well will be drilling a pilot hole to the vertical depth of 5,350'.	11/2/2015
margaretd	Well will be drilled to MD of 12,000'.	11/2/2015

District I
1625 N. French Dr., Hobbs, NM 88240
Phone:(575) 393-8161 Fax:(575) 393-0720
District II
811 S. First St., Artesia, NM 88210
Phone:(575) 748-1283 Fax:(575) 748-9720
District III
1000 Rio Brazos Rd., Aztec, NM 87410
Phone:(505) 334-8178 Fax:(505) 334-6170
District IV
1220 S. St Francis Dr., Santa Fe, NM 87505
Phone:(505) 476-3470 Fax:(505) 476-3482

State of New Mexico
Energy, Minerals and Natural Resources
Oil Conservation Division
1220 S. St Francis Dr.
Santa Fe, NM 87505

Form APD Conditions

Permit 212229

PERMIT CONDITIONS OF APPROVAL

Operator Name and Address: APACHE CORP [873] 303 Veterans Airpark Lane Midland, TX 79705	API Number: 30-025-42923
	Well: PACIFICO 16 STATE #001H

OCD Reviewer	Condition
pkautz	Will require a directional survey with the C-104
pkautz	Once the well is spud, to prevent ground water contamination through whole or partial conduits from the surface, the operator shall drill without interruption through the fresh water zone or zones and shall immediately set in cement the water protection string
pkautz	If using a pit for drilling and completion operations, must have an approved pit from prior to spudding the well.
pkautz	SURFACE & PRODUCTION CASING - Cement must circulate to surface
pkautz	If cement does not circulate to surface, must run temperature survey or other log to determine top of cement
pkautz	Must notify OCD Hobbs Office if lost circulation is encountered at 575-370-3186
pkautz	1) Must notify OCD Hobbs Office prior to running Stage Tool at 575-370-3186 2) If using Stage Tool on Surface casing, Stage Tool must be set greater than 350' from surface and a minimum of 200 feet above surface shoe. 3) When using a Stage Tool on Intermediate or Production Casing Stage must be a minimum of 50 feet below previous casing shoe.