

**District I**  
1625 N. French Dr., Hobbs, NM 88240  
Phone:(575) 393-8161 Fax:(575) 393-0720  
**District II**  
811 S. First St., Artesia, NM 88210  
Phone:(575) 748-1283 Fax:(575) 748-9720  
**District III**  
1000 Rio Brazos Rd., Aztec, NM 87410  
Phone:(505) 334-8178 Fax:(505) 334-6170  
**District IV**  
1220 S. St Francis Dr., Santa Fe, NM 87505  
Phone:(505) 476-3470 Fax:(505) 476-3482

**State of New Mexico**  
**Energy, Minerals and Natural Resources**  
**Oil Conservation Division**  
**1220 S. St Francis Dr.**  
**Santa Fe, NM 87505**

Form C-101  
August 1, 2011  
Permit 220146

**APPLICATION FOR PERMIT TO DRILL, RE-ENTER, DEEPEN, PLUGBACK, OR ADD A ZONE**

1. Operator Name and Address BTA OIL PRODUCERS, LLC 104 S. Pecos Midland, TX 79701		2. OGRID Number 260297
		3. API Number 30-025-43195
4. Property Code 305310	5. Property Name ALINE 9012 JVP	6. Well No. 003

**7. Surface Location**

UL - Lot H	Section 36	Township 20S	Range 34E	Lot Idn H	Feet From 1650	N/S Line N	Feet From 330	E/W Line E	County Lea
---------------	---------------	-----------------	--------------	--------------	-------------------	---------------	------------------	---------------	---------------

**8. Proposed Bottom Hole Location**

UL - Lot H	Section 36	Township 20S	Range 34E	Lot Idn H	Feet From 1650	N/S Line N	Feet From 330	E/W Line E	County Lea
---------------	---------------	-----------------	--------------	--------------	-------------------	---------------	------------------	---------------	---------------

**9. Pool Information**

BERRY;BONE SPRING, NORTH	5535
--------------------------	------

**Additional Well Information**

11. Work Type New Well	12. Well Type OIL	13. Cable/Rotary	14. Lease Type Private	15. Ground Level Elevation 3741
16. Multiple N	17. Proposed Depth 11650	18. Formation Bone Spring	19. Contractor	20. Spud Date 5/1/2016
Depth to Ground water		Distance from nearest fresh water well		Distance to nearest surface water

☒ We will be using a closed-loop system in lieu of lined pits

**21. Proposed Casing and Cement Program**

Type	Hole Size	Casing Size	Casing Weight/ft	Setting Depth	Sacks of Cement	Estimated TOC
Surf	17.5	13.375	54.5	1850	1365	0
Int1	12.25	9.625	40	5830	1720	0
Prod	8.75	5.5	17	11650	1300	4400

**Casing/Cement Program: Additional Comments**

17.5" hole 13.375" csg 54.5# 1850' 1365 sx circ cmt. 12.25" hole 9.625" csg 40# 5830' with DV tool at 3600'. 1st stage 750 sx 2nd stage 970 sx. 8.75" hole 5.5" csg 17# 11650' 1300 sx. TOC 4400'.
--

**22. Proposed Blowout Prevention Program**

Type	Working Pressure	Test Pressure	Manufacturer
Annular	3000	3000	
Double Ram	3000	3000	

23. I hereby certify that the information given above is true and complete to the best of my knowledge and belief. I further certify I have complied with 19.15.14.9 (A) NMAC <input checked="" type="checkbox"/> and/or 19.15.14.9 (B) NMAC <input checked="" type="checkbox"/> , if applicable.  Signature: _____ Printed Name: Electronically filed by Pam Inskeep Title: Regulatory Administrator Email Address: pinskeep@btaoil.com Date: 4/27/2016	<b>OIL CONSERVATION DIVISION</b>  Approved By: Paul Kautz Title: Geologist Approved Date: 4/28/2016 Expiration Date: 4/28/2018 Conditions of Approval Attached
Phone: 432-682-3753	

## DISTRICT I

1625 N. French Dr., Hobbs, NM 88240  
Phone: (575) 393-6161 Fax: (575) 393-0720

## DISTRICT II

811 S. First St., Artesia, NM 88210  
Phone: (575) 748-1283 Fax: (575) 748-9720

## DISTRICT III

1000 Rio Brazos Road, Aztec, NM 87410  
Phone: (505) 334-6178 Fax: (505) 334-6170

## DISTRICT IV

1220 S. St. Francis Dr., Santa Fe, NM 87505  
Phone: (505) 476-3460 Fax: (505) 476-3462

State of New Mexico  
Energy, Minerals & Natural Resources Department  
OIL CONSERVATION DIVISION  
1220 South St. Francis Dr.  
Santa Fe, New Mexico 87505

Form C-102

Revised August 1, 2011

Submit one copy to appropriate  
District Office

□ AMENDED REPORT

## WELL LOCATION AND ACREAGE DEDICATION PLAT

API Number		Pool Code	Pool Name
		5535	Berry;Bone Spring, North
Property Code	Property Name		Well Number
305310	9012 JV-P ALINE		3
OGRID No.	Operator Name		Elevation
260297	BTA OIL PRODUCERS, LLC		3741'

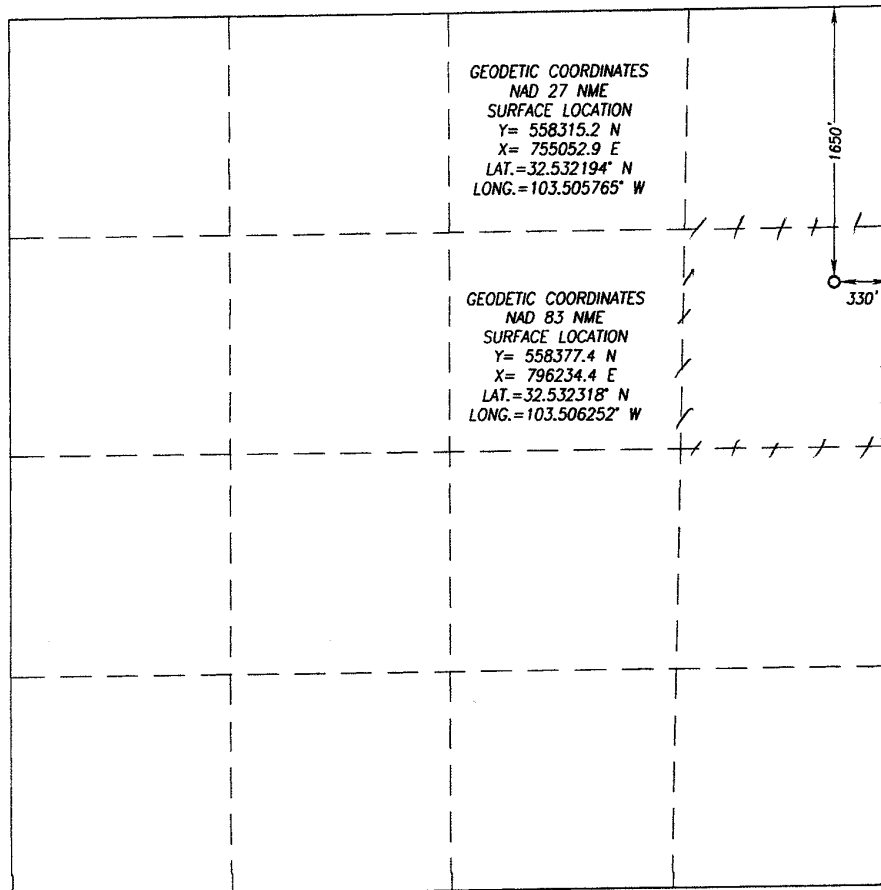
## Surface Location

UL or lot No.	Section	Township	Range	Lot Idn	Feet from the	North/South line	Feet from the	East/West line	County
H	36	20-S	34-E		1650	NORTH	330	EAST	LEA

## Bottom Hole Location If Different From Surface

UL or lot No.	Section	Township	Range	Lot Idn	Feet from the	North/South line	Feet from the	East/West line	County
Dedicated Acres		Joint or Infill		Consolidation Code		Order No.			
40									

NO ALLOWABLE WILL BE ASSIGNED TO THIS COMPLETION UNTIL ALL INTERESTS HAVE BEEN CONSOLIDATED OR A NON-STANDARD UNIT HAS BEEN APPROVED BY THE DIVISION



## OPERATOR CERTIFICATION

I hereby certify that the information herein is true and complete to the best of my knowledge and belief, and that this organization either owns a working interest or unleased mineral interest in the land including the proposed bottom hole location or has a right to drill this well at this location pursuant to a contract with an owner of such mineral or working interest, or to a voluntary pooling agreement or a compulsory pooling order heretofore entered by the division.

*Pam Inskeep* 04/15/2016  
Signature Date

Pam Inskeep, Regulatory Administrator  
Printed Name

pinskeep@btaoil.com  
E-mail Address

## SURVEYOR CERTIFICATION

I hereby certify that the well location shown on this plat was plotted from field notes of actual surveys made by me or under my supervision, and that the same is true and correct to the best of my belief.

APR 14 2016  
Date of Survey  
Signature of Professional Surveyor

RONALD J. EIDSON  
REGISTERED SURVEYOR  
3239  
Certificate Number  
Ronald J. Eidson 12641  
3239  
JWSC W.O.: 16.11.0233

**District I**  
 1625 N. French Dr., Hobbs, NM 88240  
 Phone:(575) 393-8161 Fax:(575) 393-0720  
**District II**  
 811 S. First St., Artesia, NM 88210  
 Phone:(575) 748-1283 Fax:(575) 748-9720  
**District III**  
 1000 Rio Brazos Rd., Aztec, NM 87410  
 Phone:(505) 334-6178 Fax:(505) 334-6170  
**District IV**  
 1220 S. St Francis Dr., Santa Fe, NM 87505  
 Phone:(505) 476-3470 Fax:(505) 476-3482

**State of New Mexico**  
**Energy, Minerals and Natural Resources**  
**Oil Conservation Division**  
**1220 S. St Francis Dr.**  
**Santa Fe, NM 87505**

Form APD Comments  
  
 Permit 220146

**PERMIT COMMENTS**

Operator Name and Address: BTA OIL PRODUCERS, LLC [260297] 104 S. Pecos Midland, TX 79701		API Number: 30-025-43195
		Well: ALINE 9012 JVP #003
Created By	Comment	Comment Date
pinskeep	Acreage is communitized. CA# 203480. Well is not communitized. BTA is limited from top of BS to top of 3rd BS sand, COG is limited from top of 3rd BS sand to 200' below top of WC. Waiver of No Objection has been received from COG for the well/location.	4/27/2016

**District I**  
1625 N. French Dr., Hobbs, NM 88240  
Phone:(575) 393-8161 Fax:(575) 393-0720  
**District II**  
811 S. First St., Artesia, NM 88210  
Phone:(575) 748-1283 Fax:(575) 748-9720  
**District III**  
1000 Rio Brazos Rd., Aztec, NM 87410  
Phone:(505) 334-8178 Fax:(505) 334-8170  
**District IV**  
1220 S. St Francis Dr., Santa Fe, NM 87505  
Phone:(505) 476-3470 Fax:(505) 476-3482

**State of New Mexico**  
**Energy, Minerals and Natural Resources**  
**Oil Conservation Division**  
**1220 S. St Francis Dr.**  
**Santa Fe, NM 87505**

Form APD Conditions

Permit 220146

**PERMIT CONDITIONS OF APPROVAL**

Operator Name and Address: BTA OIL PRODUCERS, LLC [260297] 104 S. Pecos Midland, TX 79701	API Number: 30-025-43195
	Well: ALINE 9012 JVP #003

OCD Reviewer	Condition
pkautz	Once the well is spud, to prevent ground water contamination through whole or partial conduits from the surface, the operator shall drill without interruption through the fresh water zone or zones and shall immediately set in cement the water protection string
pkautz	If using a pit for drilling and completion operations, must have an approved pit from prior to spudding the well.
pkautz	1) SURFACE & INTERMEDIATE CASING - Cement must circulate to surface -- 2) PRODUCTION CASING - Cement must tie back into intermediate casing --
pkautz	If cement does not circulate to surface, must run temperature survey or other log to determine top of cement
pkautz	Surface casing must be set 25' below top of Rustler Anhydrite in order to seal off protectable water
pkautz	Must notify OCD Hobbs Office of any water flows in the Salado Formation at 575-370-3186. Report depth and flow rate
pkautz	1) Must notify OCD Hobbs Office prior to running Stage Tool at 575-370-3186 2) If using Stage Tool on Surface casing, Stage Tool must be set greater than 350' from surface and a minimum of 200 feet above surface shoe. 3) When using a Stage Tool on Intermediate or Production Casing Stage must be a minimum of 50 feet below previous casing shoe.
pkautz	The NMOCD Gas Capture Plan notice has been posted on the web site under Announcements/Notice to Operators. A copy of the GCP form is included with the notice and it is also in the Forms section under Unnumbered Forms. Please submit accordingly in a timely manner.