

**District I**  
1625 N. French Dr., Hobbs, NM 88240  
Phone:(575) 393-8161 Fax:(575) 393-0720  
**District II**  
811 S. First St., Artesia, NM 88210  
Phone:(575) 749-1283 Fax:(575) 749-9720  
**District III**  
1000 Rio Brazos Rd., Aztec, NM 87410  
Phone:(505) 334-8178 Fax:(505) 334-8170  
**District IV**  
1220 S. St Francis Dr., Santa Fe, NM 87505  
Phone:(505) 476-3470 Fax:(505) 476-3482

**State of New Mexico**  
**Energy, Minerals and Natural Resources**  
**Oil Conservation Division**  
**1220 S. St Francis Dr.**  
**Santa Fe, NM 87505**

Form C-101  
August 1, 2011  
Permit 221881

**APPLICATION FOR PERMIT TO DRILL, RE-ENTER, DEEPEN, PLUGBACK, OR ADD A ZONE**

1. Operator Name and Address CIMAREX ENERGY CO. 600 N MARIENFELD STREET MIDLAND, TX 79701		2. OGRID Number 215099
4. Property Code 39359		3. API Number 30-025-43292
5. Property Name CHIEF 30 STATE		6. Well No. 006

**7. Surface Location**

UL - Lot	Section	Township	Range	Lot Idn	Feet From	N/S Line	Feet From	E/W Line	County
L	30	20S	35E	3	2348	S	805	W	Lea

**8. Proposed Bottom Hole Location**

UL - Lot	Section	Township	Range	Lot Idn	Feet From	N/S Line	Feet From	E/W Line	County
L	30	20S	35E	3	2030	S	420	W	Lea

**9. Pool Information**

BERRY;BONE SPRING, NORTH	5535
--------------------------	------

**Additional Well Information**

11. Work Type New Well	12. Well Type OIL	13. Cable/Rotary	14. Lease Type State	15. Ground Level Elevation 3725
16. Multiple N	17. Proposed Depth 11676	18. Formation Bone Spring	19. Contractor	20. Spud Date 6/30/2016
Depth to Ground water		Distance from nearest fresh water well		Distance to nearest surface water

☒ We will be using a closed-loop system in lieu of lined pits

**21. Proposed Casing and Cement Program**

Type	Hole Size	Casing Size	Casing Weight/ft	Setting Depth	Sacks of Cement	Estimated TOC
Surf	17.5	13.375	54.5	1925	1183	0
Int1	12.25	9.625	40	5650	1345	0
Prod	7.875	5.5	17	11676	2211	0

**Casing/Cement Program: Additional Comments**

--

**22. Proposed Blowout Prevention Program**

Type	Working Pressure	Test Pressure	Manufacturer
Double Ram	3000	3000	Cameran
Double Ram	2000	2000	Cameran

23. I hereby certify that the information given above is true and complete to the best of my knowledge and belief. I further certify I have complied with 19.15.14.9 (A) NMAC <input checked="" type="checkbox"/> and/or 19.15.14.9 (B) NMAC <input checked="" type="checkbox"/> if applicable.  Signature:	<b>OIL CONSERVATION DIVISION</b>
Printed Name: Electronically filed by Geneva A Holloway	Approved By: Paul Kautz
Title: Prod Admin Supervisor	Title: Geologist
Email Address: gholloway@cimarex.com	Approved Date: 6/8/2016      Expiration Date: 6/8/2018
Date: 6/6/2016      Phone: 918-295-1658	Conditions of Approval Attached

District I  
1625 N. French Dr., Hobbs, NM 88240  
Phone: (575) 393-6161 Fax: (575) 393-0720  
District II  
811 S. First St., Artesia, NM 88210  
Phone: (575) 748-1283 Fax: (575) 748-9720  
District III  
1000 Rio Brazos Road, Aztec, NM 87410  
Phone: (505) 334-6178 Fax: (505) 334-6170  
District IV  
1220 S. St. Francis Dr., Santa Fe, NM 87505  
Phone: (505) 476-3460 Fax: (505) 476-3462

State of New Mexico  
Energy, Minerals & Natural Resources Department  
OIL CONSERVATION DIVISION  
1220 South St. Francis Dr.  
Santa Fe, NM 87505

Form C-102  
Revised August 1, 2011  
Submit one copy to appropriate  
District Office

☐ AMENDED REPORT

WELL LOCATION AND ACREAGE DEDICATION PLAT

<sup>1</sup> API Number	<sup>2</sup> Pool Code 5535	<sup>3</sup> Pool Name Berry; Bone Spring, North
<sup>4</sup> Property Code 39359	<sup>5</sup> Property Name CHIEF 30 STATE	<sup>6</sup> Well Number #6
<sup>7</sup> OGRID No. 215099	<sup>8</sup> Operator Name CIMAREX ENERGY CO.	<sup>9</sup> Elevation 3724.8

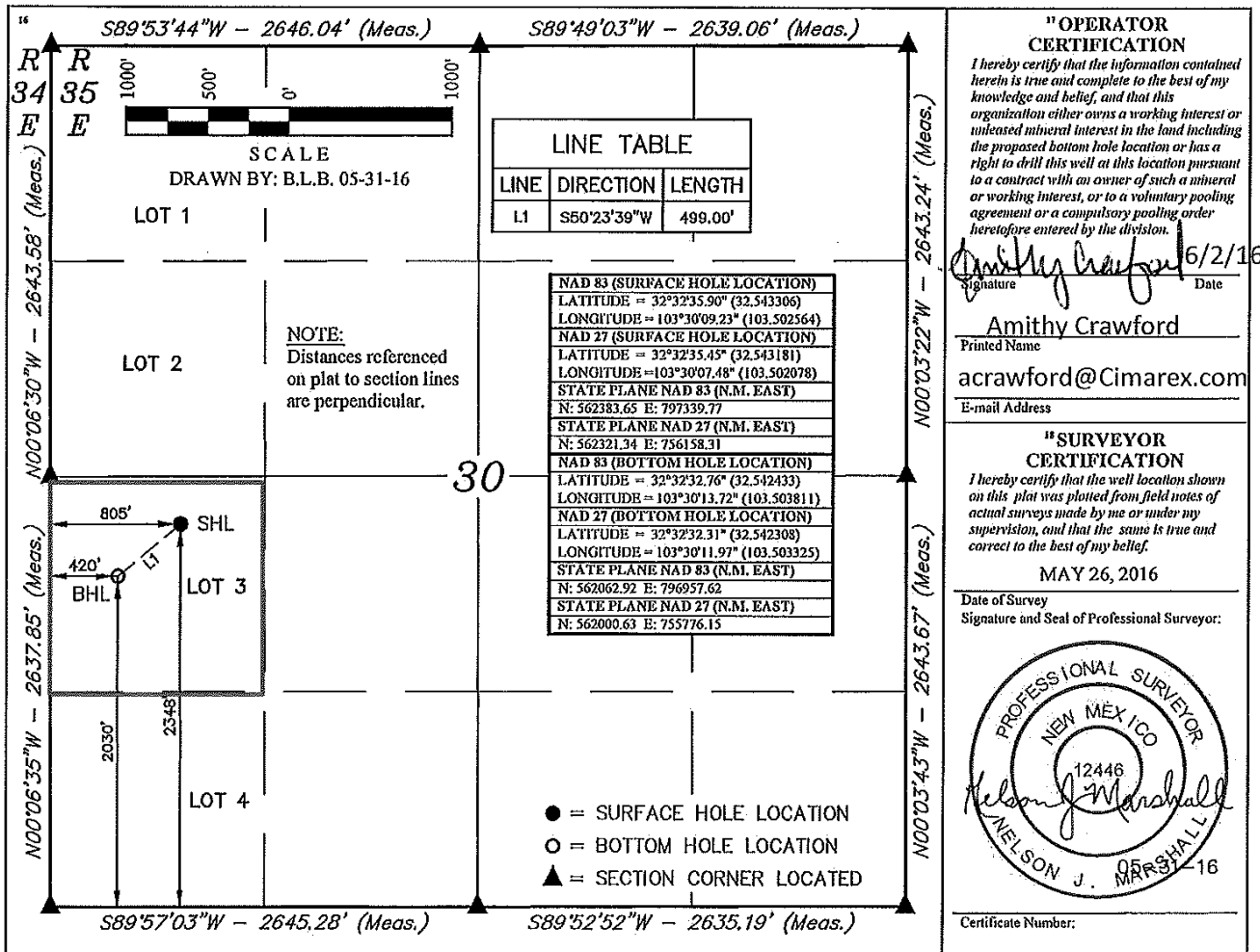
"Surface Location

UL or lot no.	Section	Township	Range	Lot Idn	Feet from the	North/South line	Feet from the	East/West line	County
3	30	20S	35E		2348	SOUTH	805	WEST	LEA

"Bottom Hole Location If Different From Surface

UL or lot no.	Section	Township	Range	Lot Idn	Feet from the	North/South line	Feet from the	East/West line	County
3	30	20S	35E		2030	SOUTH	420	WEST	LEA
<sup>12</sup> Dedicated Acres 40.12	<sup>13</sup> Joint or Infill	<sup>14</sup> Consolidation Code	<sup>15</sup> Order No.						

No allowable will be assigned to this completion until all interests have been consolidated or a non-standard unit has been approved by the division.



**District I**  
1625 N. French Dr., Hobbs, NM 88240  
Phone:(575) 393-6161 Fax:(575) 393-0720  
**District II**  
811 S. First St., Artesia, NM 88210  
Phone:(575) 748-1283 Fax:(575) 748-9720  
**District III**  
1000 Rio Brazos Rd., Aztec, NM 87410  
Phone:(505) 334-6178 Fax:(505) 334-6170  
**District IV**  
1220 S. St Francis Dr., Santa Fe, NM 87505  
Phone:(505) 476-3470 Fax:(505) 476-3482

**State of New Mexico**  
**Energy, Minerals and Natural Resources**  
**Oil Conservation Division**  
**1220 S. St Francis Dr.**  
**Santa Fe, NM 87505**

Form APD Comments

Permit 221881

**PERMIT COMMENTS**

Operator Name and Address: CIMAREX ENERGY CO. [215099] 600 N MARIENFELD STREET MIDLAND , TX 79701	API Number: 30-025-43292
	Well: CHIEF 30 STATE #006

Created By	Comment	Comment Date
------------	---------	--------------

**District I**  
1625 N. French Dr., Hobbs, NM 88240  
Phone:(575) 393-8161 Fax:(575) 393-0720  
**District II**  
811 S. First St., Artesia, NM 88210  
Phone:(575) 748-1283 Fax:(575) 748-9720  
**District III**  
1000 Rio Brazos Rd., Aztec, NM 87410  
Phone:(505) 334-8178 Fax:(505) 334-6170  
**District IV**  
1220 S. St Francis Dr., Santa Fe, NM 87505  
Phone:(505) 476-3470 Fax:(505) 476-3482

**State of New Mexico**  
**Energy, Minerals and Natural Resources**  
**Oil Conservation Division**  
**1220 S. St Francis Dr.**  
**Santa Fe, NM 87505**

Form APD Conditions

Permit 221881

**PERMIT CONDITIONS OF APPROVAL**

Operator Name and Address: CIMAREX ENERGY CO. [215099] 600 N MARIENFELD STREET MIDLAND , TX 79701		API Number: 30-025-43292
		Well: CHIEF 30 STATE #006
OCD Reviewer	Condition	
pkautz	Will require a directional survey with the C-104	
pkautz	Once the well is spud, to prevent ground water contamination through whole or partial conduits from the surface, the operator shall drill without interruption through the fresh water zone or zones and shall immediately set in cement the water protection string	
pkautz	If using a pit for drilling and completion operations, must have an approved pit from prior to spudding the well.	
pkautz	1) SURFACE & INTERMEDIATE CASING - Cement must circulate to surface -- 2) PRODUCTION CASING - Cement must tie back into intermediate casing --	
pkautz	Surface casing must be set 25' below top of Rustler Anhydrite in order to seal off protectable water	
pkautz	Must notify OCD Hobbs Office if lost circulation is encountered at 575-370-3186	
pkautz	Must notify OCD Hobbs Office of any water flows in the Salado Formation at 575-370-3186. Report depth and flow rate	
pkautz	1) Must notify OCD Hobbs Office prior to running Stage Tool at 575-370-3186 2) If using Stage Tool on Surface casing, Stage Tool must be set greater than 350' from surface and a minimum of 200 feet above surface shoe. 3) When using a Stage Tool on Intermediate or Production Casing Stage must be a minimum of 50 feet below previous casing shoe.	
pkautz	The New! Gas Capture Plan (GCP) notice is posted on the NMOCDD website under Announcements. The Plan became effective May 1, 2016. A copy of the GCP form is included with the NOTICE and is also in our FORMS section under Unnumbered Forms. Please review filing dates for all applicable activities currently approved or pending and submit accordingly. Failure to file a GCP may jeopardize the operator's ability to obtain C-129 approval to flare gas after the initial 60-day completion period.	