

District I
1625 N. French Dr., Hobbs, NM 88240
Phone:(575) 393-8161 Fax:(575) 393-0720
District II
811 S. First St., Artesia, NM 88210
Phone:(575) 748-1283 Fax:(575) 748-9720
District III
1000 Rio Brazos Rd., Aztec, NM 87410
Phone:(505) 334-8178 Fax:(505) 334-8170
District IV
1220 S. St Francis Dr., Santa Fe, NM 87505
Phone:(505) 476-3470 Fax:(505) 476-3482

State of New Mexico
Energy, Minerals and Natural Resources
Oil Conservation Division
1220 S. St Francis Dr.
Santa Fe, NM 87505

Form C-101
August 1, 2011
Permit 234370

APPLICATION FOR PERMIT TO DRILL, RE-ENTER, DEEPEN, PLUGBACK, OR ADD A ZONE

1. Operator Name and Address CIMAREX ENERGY CO. 600 N MARIENFELD STREET MIDLAND, TX 79701		2. OGRID Number 215099
4. Property Code 317588		3. API Number 30-025-43738
5. Property Name CORIANDER AOC 1-12 STATE		6. Well No. 003H

7. Surface Location

UL - Lot	Section	Township	Range	Lot Idn	Feet From	N/S Line	Feet From	E/W Line	County
A	1	23S	32E	1	330	N	730	E	Lea

8. Proposed Bottom Hole Location

UL - Lot	Section	Township	Range	Lot Idn	Feet From	N/S Line	Feet From	E/W Line	County
P	12	23S	32E	P	303	S	960	E	Lea

9. Pool Information

DIAMONDTAIL;BONE SPRING	17644
-------------------------	-------

Additional Well Information

11. Work Type New Well	12. Well Type OIL	13. Cable/Rotary	14. Lease Type State	15. Ground Level Elevation 3752
16. Multiple N	17. Proposed Depth 19200	18. Formation 1st Bone Spring Sand	19. Contractor	20. Spud Date 6/1/2017
Depth to Ground water		Distance from nearest fresh water well		Distance to nearest surface water

☐ We will be using a closed-loop system in lieu of lined pits

21. Proposed Casing and Cement Program

Type	Hole Size	Casing Size	Casing Weight/ft	Setting Depth	Sacks of Cement	Estimated TOC
Surf	17.5	13.375	48	1300	798	0
Int1	12.25	9.625	40	4970	1221	0
Prod	8.75	5.5	17	19130	2331	4770

Casing/Cement Program: Additional Comments

--

22. Proposed Blowout Prevention Program

Type	Working Pressure	Test Pressure	Manufacturer
Double Ram	2000	2000	Cameron
Double Ram	3000	3000	Cameron

23. I hereby certify that the information given above is true and complete to the best of my knowledge and belief. I further certify I have complied with 19.15.14.9 (A) NMAC ☒ and/or 19.15.14.9 (B) NMAC ☒, if applicable. Signature:	OIL CONSERVATION DIVISION
Printed Name: Electronically filed by Genea A Holloway Title: Prod Admin Supervisor Email Address: gholloway@cimarex.com Date: 4/7/2017	Approved By: Paul Kautz Title: Geologist Approved Date: 4/7/2017 Conditions of Approval Attached
Phone: 918-295-1658	Expiration Date: 4/7/2019

District I
1625 N French Dr., Hobbs, NM 88240
Phone: (575) 393-6161 Fax: (575) 393-0720
District II
811 S. First St., Artesia, NM 88210
Phone: (575) 748-1283 Fax: (575) 748-9720
District III
1000 Rio Brazos Road, Aztec, NM 87410
Phone: (505) 334-6178 Fax: (505) 334-6170
District IV
1220 S. St. Francis Dr., Santa Fe, NM 87505
Phone: (505) 476-3460 Fax: (505) 476-3462

State of New Mexico
Energy, Minerals & Natural Resources Department
OIL CONSERVATION DIVISION
1220 South St. Francis Dr.
Santa Fe, NM 87505

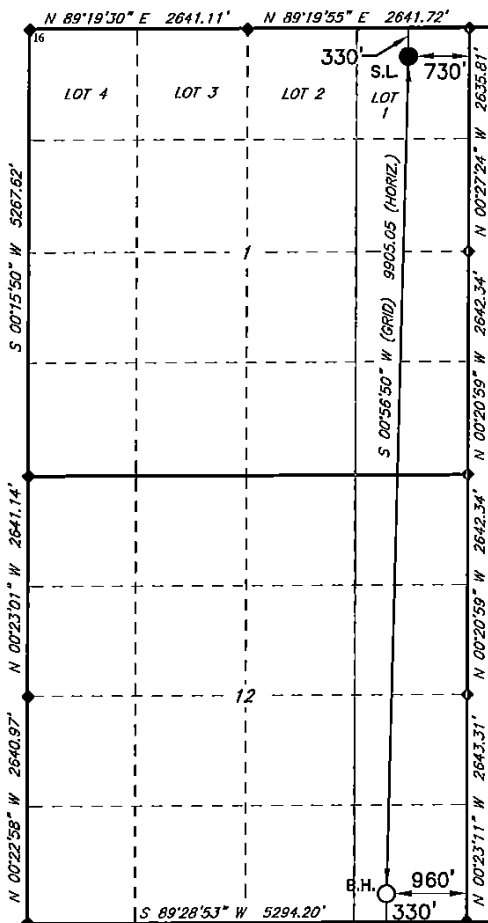
Form C-14
Revised August 1, 2010
Submit one copy to appropriate
District Office

☐ AMENDED REPORT

WELL LOCATION AND ACREAGE DEDICATION PLAT

¹ API Number 30-025-		² Pool Code 17644		³ Pool Name Diamondtail; Bone Spring					
⁴ Property Code		⁵ Property Name CORIANDER AOC 1-12 STATE						⁶ Well Number 3H	
⁷ GRID NO. 215099		⁸ Operator Name CIMAREX ENERGY COMPANY						⁹ Elevation 3752'	
¹⁰ Surface Location									
UL or lot no. 1	Section 1	Township 23S	Range 32E	Lot Idn	Feet from the 330	North/South line NORTH	Feet From the 730	East/West line EAST	County LEA
¹¹ Bottom Hole Location If Different From Surface									
UL or lot no. P	Section 12	Township 23S	Range 32E	Lot Idn	Feet from the 330	North/South line SOUTH	Feet from the 960	East/West line EAST	County LEA
¹² Dedicated Acres 319.95		¹³ Joint or Infill		¹⁴ Consolidation Code		¹⁵ Order No.			

No allowable will be assigned to this completion until all interest have been consolidated or a non-standard unit has been approved by the division.



GEODETIC DATA
NAD 83 GRID - NM EAST
SURFACE LOCATION
N: 488209.4 - E: 760984.1
LAT: 32.34015430° N
LONG: 103.62213822° W
LAT: 32°20'24.5581" N
LONG: 103°37'19.6981" W
BOTTOM HOLE
N: 478307.8 - E: 760820.4
LAT: 32.31294116° N
LONG: 103.62288089° W
LAT: 32°18'46.5882" N
LONG: 103°37'22.3712" W

GEODETIC DATA
NAD 27 GRID - NM EAST
SURFACE LOCATION
N: 488149.4 - E: 719801.1
LAT: 32.34003099° N
LONG: 103.62165426° W
LAT: 32°20'24.1116" N
LONG: 103°37'17.9554" W
BOTTOM HOLE
N: 478248.1 - E: 719637.2
LAT: 32.31281786° N
LONG: 103.62239778° W
LAT: 32°18'46.1443" N
LONG: 103°37'20.6320" W

● = SURFACE HOLE LOCATION
○ = BOTTOM HOLE LOCATION
◆ = SECTION CORNER LOCATED
0 500 1,000 2,000 Feet

¹⁷ OPERATOR CERTIFICATION

I hereby certify that the information contained herein is true and complete to the best of my knowledge and belief, and that this organization either owns a working interest or unleased mineral interest in the land including the proposed bottom hole location or has a right to drill this well at this location pursuant to a contract with an owner of such a mineral or working interest, or to a voluntary pooling agreement or a compulsory pooling order theretofore entered by the division.

Signature: *Amithy Crawford* Date: 4/3/2017
Printed Name: Amithy Crawford

acrawford@cimarex.com
E-mail Address

¹⁸ SURVEYOR CERTIFICATION

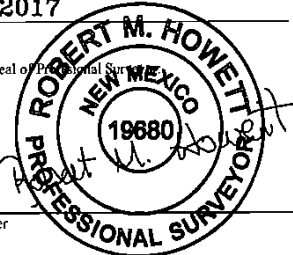
I hereby certify that the well location shown on this plat was plotted from field notes of actual surveys made by me or under my supervision, and that the same is true and correct to the best of my belief.

3-22-2017

Date of Survey

Signature and Seal of Professional Surveyor

19680
Certificate Number



RRC-Job No.: LS1703167

District I
1625 N. French Dr., Hobbs, NM 88240
Phone:(575) 393-6161 Fax:(575) 393-0720
District II
811 S. First St., Artesia, NM 88210
Phone:(575) 748-1283 Fax:(575) 748-9720
District III
1000 Rio Brazos Rd., Aztec, NM 87410
Phone:(505) 334-6178 Fax:(505) 334-6170
District IV
1220 S. St Francis Dr., Santa Fe, NM 87505
Phone:(505) 476-3470 Fax:(505) 476-3462

State of New Mexico
Energy, Minerals and Natural Resources
Oil Conservation Division
1220 S. St Francis Dr.
Santa Fe, NM 87505

Form APD Comments

Permit 234370

PERMIT COMMENTS

Operator Name and Address: CIMAREX ENERGY CO. [215099] 600 N MARIENFELD STREET MIDLAND , TX 79701	API Number: 30-025-43738
	Well: CORIANDER AOC 1-12 STATE #003H

Created By	Comment	Comment Date
------------	---------	--------------

District I
1625 N. French Dr., Hobbs, NM 88240
Phone:(575) 393-8161 Fax:(575) 393-0720
District II
811 S. First St., Artesia, NM 88210
Phone:(575) 748-1283 Fax:(575) 748-9720
District III
1000 Rio Brazos Rd., Aztec, NM 87410
Phone:(505) 334-8178 Fax:(505) 334-6170
District IV
1220 S. St Francis Dr., Santa Fe, NM 87505
Phone:(505) 476-3470 Fax:(505) 476-3462

State of New Mexico
Energy, Minerals and Natural Resources
Oil Conservation Division
1220 S. St Francis Dr.
Santa Fe, NM 87505

Form APD Conditions

Permit 234370

PERMIT CONDITIONS OF APPROVAL

Operator Name and Address: CIMAREX ENERGY CO. [215099] 600 N MARIENFELD STREET MIDLAND , TX 79701	API Number: 30-025-43738
	Well: CORIANDER AOC 1-12 STATE #003H

OCD Reviewer	Condition
pkautz	Will require a directional survey with the C-104
pkautz	Once the well is spud, to prevent ground water contamination through whole or partial conduits from the surface, the operator shall drill without interruption through the fresh water zone or zones and shall immediately set in cement the water protection string
pkautz	Pit construction and closure must satisfy all requirements of your approved plan.
pkautz	If using a pit for drilling and completion operations, must have an approved pit from prior to spudding the well.
pkautz	1) SURFACE & INTERMEDIATE CASING - Cement must circulate to surface -- 2) PRODUCTION CASING - Cement must tie back into intermediate casing --
pkautz	If cement does not circulate to surface, must run temperature survey or other log to determine top of cement
pkautz	Surface casing must be set 25' below top of Rustler Anhydrite in order to seal off protectable water
pkautz	Only Fresh Water and Air are Valid Drilling Fluids for Surface Casing
pkautz	1)- The Operator is to notify NMOCDD by sundry (Form C-103) within ten (10) days of the well being spud 2)- Drilling Sundries Form C-103 (Casing and Cement test are to be submitted within 10 days 3)- Completion Reports & Logs are to be submitted within 20 days 4)- Deviation / Directional Drill Survey are to be filed with or prior to C-104
pkautz	It is the operator's responsibility to monitor cancellation dates of approved APDs. APD's are good for 2 years and may be extended for one year. Only one 1 year extension will be granted if submitted by C-103 before expiration date. After expiration date or after a 1 year extension must submit new APD.
pkautz	If an APD expires and if site construction has occurred, site remediation is required.
pkautz	Must notify OCD Hobbs Office if lost circulation is encountered at 575-370-3186
pkautz	Must notify OCD Hobbs Office of any water flows in the Castile Formation at 575-370-3186. Report depth and flow rate
pkautz	Stage Tool 1) Must notify OCD Hobbs Office prior to running Stage Tool at 575-370-3186 2) If using Stage Tool on Surface casing, Stage Tool must be set greater than 350' from surface and a minimum of 200 feet above surface shoe. 3) When using a Stage Tool on Intermediate or Production Casing Stage must be a minimum of 50 feet below previous casing shoe.
pkautz	Submit Gas Capture Plan form prior to spud