

District I
1625 N. French Dr., Hobbs, NM 88240
Phone:(575) 393-6161 Fax:(575) 393-0720

District II
811 S. First St., Artesia, NM 88210
Phone:(575) 748-1283 Fax:(575) 748-9720

District III
1000 Rio Brazos Rd., Aztec, NM 87410
Phone:(505) 334-6178 Fax:(505) 334-6170

District IV
1220 S. St Francis Dr., Santa Fe, NM 87505
Phone:(505) 476-3470 Fax:(505) 476-3462

State of New Mexico
Energy, Minerals and Natural Resources
Oil Conservation Division
1220 S. St Francis Dr.
Santa Fe, NM 87505

Form C-101
August 1, 2011
Permit 238289

APPLICATION FOR PERMIT TO DRILL, RE-ENTER, DEEPEN, PLUGBACK, OR ADD A ZONE

1. Operator Name and Address CHISHOLM ENERGY OPERATING, LLC 801 Cherry Street Fort Worth, TX 76102		2. OGRID Number 372137
4. Property Code 318410		3. API Number 30-025-43907
5. Property Name GAZELLE 32 STATE 2BS		6. Well No. 002H

7. Surface Location

UL - Lot	Section	Township	Range	Lot Idn	Feet From	N/S Line	Feet From	E/W Line	County
C	32	18S	33E	C	200	N	1420	W	Lea

8. Proposed Bottom Hole Location

UL - Lot	Section	Township	Range	Lot Idn	Feet From	N/S Line	Feet From	E/W Line	County
N	32	18S	33E	N	330	S	1830	W	Lea

9. Pool Information

CORBIN;BONE SPRING, SOUTH	13160
---------------------------	-------

Additional Well Information

11. Work Type New Well	12. Well Type OIL	13. Cable/Rotary	14. Lease Type State	15. Ground Level Elevation 3758
16. Multiple N	17. Proposed Depth 14350	18. Formation Strawn	19. Contractor	20. Spud Date 11/10/2017
Depth to Ground water		Distance from nearest fresh water well		Distance to nearest surface water

☒ We will be using a closed-loop system in lieu of lined pits

21. Proposed Casing and Cement Program

Type	Hole Size	Casing Size	Casing Weight/ft	Setting Depth	Sacks of Cement	Estimated TOC
Surf	17.5	13.375	54.5	1505	1378	0
Int1	12.25	9.625	40	5610	2151	0
Prod	8.75	5.5	17	14350	1977	5110

Casing/Cement Program: Additional Comments

--

22. Proposed Blowout Prevention Program

Type	Working Pressure	Test Pressure	Manufacturer
Double Ram	5000	5000	Cameron

23. I hereby certify that the information given above is true and complete to the best of my knowledge and belief. I further certify I have complied with 19.15.14.9 (A) NMAC <input type="checkbox"/> and/or 19.15.14.9 (B) NMAC <input checked="" type="checkbox"/> if applicable. Signature: _____ Printed Name: Electronically filed by Bettie Watson Title: Regulatory Consultant Email Address: bwatson@chisholmenergy.com Date: 7/26/2017	<div style="text-align: center;">OIL CONSERVATION DIVISION</div> Approved By: Paul Kautz Title: Geologist Approved Date: 7/27/2017 Expiration Date: 7/27/2019 Conditions of Approval Attached
Phone: 972-979-0132	

DISTRICT I
1625 N. French Dr., Hobbs, NM 88240
Phone (505) 393-4161 Fax: (505) 393-0700

DISTRICT II
811 S. First St., Artesia, NM 88210
Phone (505) 748-1883 Fax: (505) 748-9720

DISTRICT III
1000 Rio Brazos Rd., Aztec, NM 87410
Phone (505) 334-8178 Fax: (505) 334-8170

DISTRICT IV
1226 S. St. Francis Dr., Santa Fe, NM 87505
Phone (505) 478-3460 Fax: (505) 478-3458

State of New Mexico
Energy, Minerals and Natural Resources Department

Form C-102
Revised August 1, 2011

Submit one copy to appropriate
District Office

OIL CONSERVATION DIVISION
1226 South St. Francis Dr.
Santa Fe, New Mexico 87505

WELL LOCATION AND ACREAGE DEDICATION PLAT

☐ AMENDED REPORT

API Number	Pool Code 13160	Pool Name Corbin: Bone Spring South
Property Code	Property Name GAZELLE 32 STATE 2BS	Well Number 2H
OGRID No. 372137	Operator Name CHISHOLM ENERGY OPERATING, LLC	Elevation 3758'

Surface Location

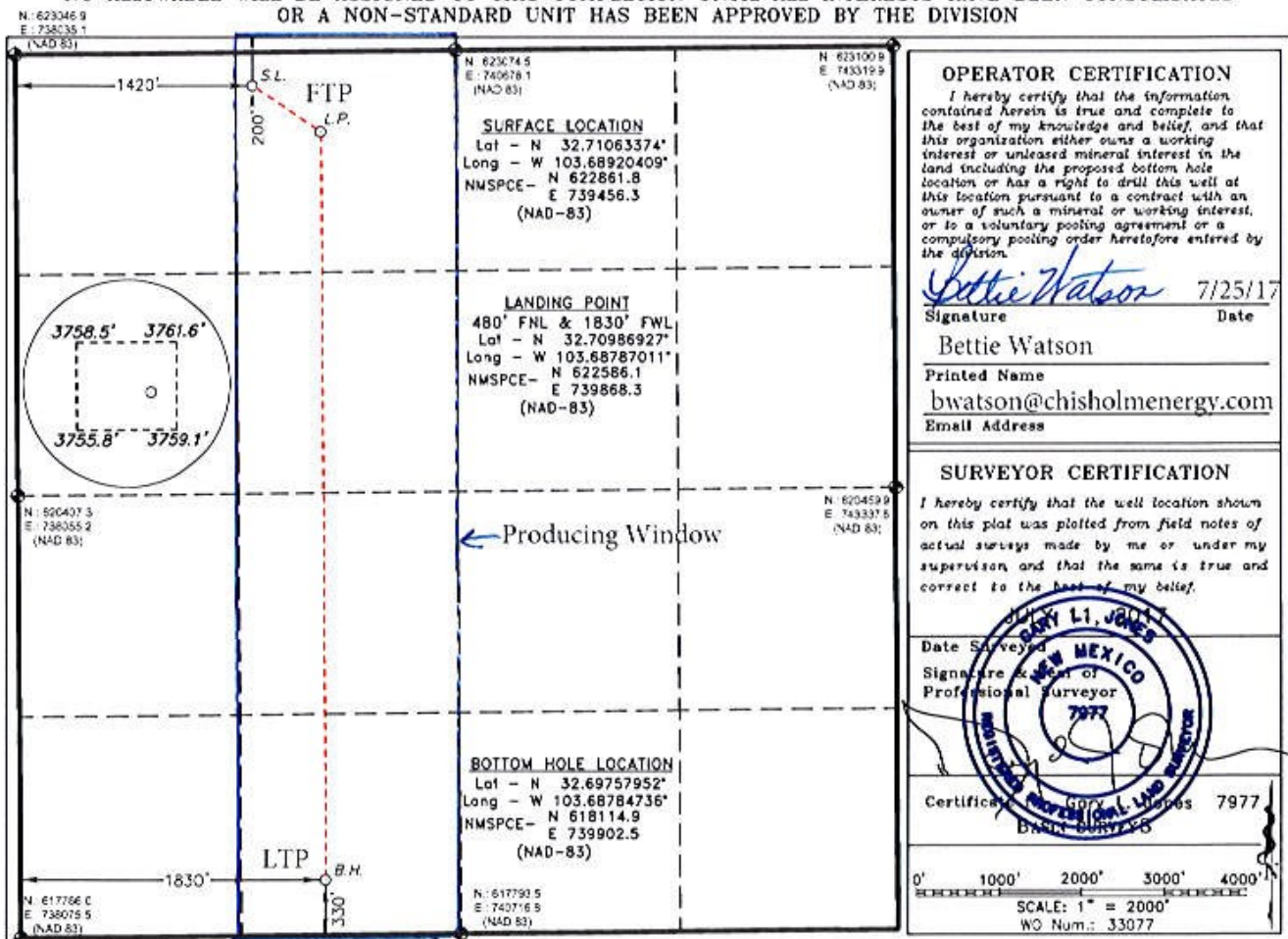
UL or lot No.	Section	Township	Range	Lot Idn	FEET from the	North/SOUTH LINE	FEET from the	East/West Line	County
C	32	18 S	33 E		200	NORTH	1420	WEST	LEA

Bottom Hole Location If Different From Surface

UL or lot No.	Section	Township	Range	Lot Idn	FEET from the	North/SOUTH LINE	FEET from the	East/West Line	County
N	32	18 S	33 E		330	SOUTH	1830	WEST	LEA

Dedicated Acres 160	Joint or Infill	Consolidation Code	Order No.
------------------------	-----------------	--------------------	-----------

NO ALLOWABLE WILL BE ASSIGNED TO THIS COMPLETION UNTIL ALL INTERESTS HAVE BEEN CONSOLIDATED
OR A NON-STANDARD UNIT HAS BEEN APPROVED BY THE DIVISION



OPERATOR CERTIFICATION

I hereby certify that the information contained herein is true and complete to the best of my knowledge and belief, and that this organization either owns a working interest or unleased mineral interest in the land including the proposed bottom hole location or has a right to drill this well at this location pursuant to a contract with an owner of such a mineral or working interest, or to a voluntary pooling agreement or a compulsory pooling order heretofore entered by the division.

Bettie Watson 7/25/17
Signature Date

Bettie Watson
Printed Name
bwatson@chisholmenergy.com
Email Address

SURVEYOR CERTIFICATION

I hereby certify that the well location shown on this plat was plotted from field notes of actual surveys made by me or under my supervision, and that the same is true and correct to the best of my belief.

DATE SURVEYED: JULY 11, 2017
Signature of Professional Surveyor: [Signature]
Professional Surveyor: 7977

Certified by: [Signature] 7977
Basin Surveyor

0' 1000' 2000' 3000' 4000'
SCALE: 1" = 2000'
WO Num.: 33077

District I
1625 N. French Dr., Hobbs, NM 88240
Phone:(575) 393-6161 Fax:(575) 393-0720

District II
811 S. First St., Artesia, NM 88210
Phone:(575) 748-1283 Fax:(575) 748-9720

District III
1000 Rio Brazos Rd., Aztec, NM 87410
Phone:(505) 334-6178 Fax:(505) 334-6170

District IV
1220 S. St Francis Dr., Santa Fe, NM 87505
Phone:(505) 476-3470 Fax:(505) 476-3462

State of New Mexico
Energy, Minerals and Natural Resources
Oil Conservation Division
1220 S. St Francis Dr.
Santa Fe, NM 87505

Form APD Comments

Permit 238289

PERMIT COMMENTS

Operator Name and Address: CHISHOLM ENERGY OPERATING, LLC [372137] 801 Cherry Street Fort Worth, TX 76102		API Number: 30-025-43907
		Well: GAZELLE 32 STATE 2BS #002H
Created By	Comment	Comment Date

District I

1625 N. French Dr., Hobbs, NM 88240
 Phone:(575) 393-6161 Fax:(575) 393-0720

District II

811 S. First St., Artesia, NM 88210
 Phone:(575) 748-1283 Fax:(575) 748-9720

District III

1000 Rio Brazos Rd., Aztec, NM 87410
 Phone:(505) 334-6178 Fax:(505) 334-6170

District IV

1220 S. St Francis Dr., Santa Fe, NM 87505
 Phone:(505) 476-3470 Fax:(505) 476-3462

Form APD Conditions

Permit 238289

State of New Mexico
Energy, Minerals and Natural Resources
Oil Conservation Division
1220 S. St Francis Dr.
Santa Fe, NM 87505

PERMIT CONDITIONS OF APPROVAL

Operator Name and Address: CHISHOLM ENERGY OPERATING, LLC [372137] 801 Cherry Street Fort Worth, TX 76102	API Number: 30-025-43907
	Well: GAZELLE 32 STATE 2BS #002H

OCD Reviewer	Condition
pkautz	Will require a directional survey with the C-104
pkautz	Once the well is spud, to prevent ground water contamination through whole or partial conduits from the surface, the operator shall drill without interruption through the fresh water zone or zones and shall immediately set in cement the water protection string
pkautz	If using a pit for drilling and completion operations, must have an approved pit from prior to spudding the well.
pkautz	1) SURFACE & INTERMEDIATE CASING - Cement must circulate to surface -- 2) PRODUCTION CASING - Cement must tie back into intermediate casing --
pkautz	If cement does not circulate to surface, must run temperature survey or other log to determine top of cement
pkautz	Surface casing must be set 25' below top of Rustler Anhydrite in order to seal off protectable water
pkautz	Only Fresh Water and Air are Valid Drilling Fluids for Surface Casing
pkautz	Operator shall notify appropriate District office when setting conductor pipe
pkautz	1)- The Operator is to notify NMOCD by sundry (Form C-103) within ten (10) days of the well being spud 2)- Drilling Sundries Form C-103 (Casing and Cement test are to be submitted within 10 days 3)- Completion Reports & Logs are to be submitted within 20 days 4)- Deviation / Directional Drill Survey are to be filed with or prior to C-104
pkautz	It is the operator's responsibility to monitor cancellation dates of approved APDs. APD's are good for 2 years and may be extended for one year. Only one 1 year extension will be granted if submitted by C-103 before expiration date. After expiration date or after a 1 year extension must submit new APD.
pkautz	If an APD expires and if site construction has occurred, site remediation is required
pkautz	Lost Circulation - Must notify OCD Hobbs Office if lost circulation is encountered at 575-370-3186
pkautz	Stage Tool - 1) Must notify OCD Hobbs Office prior to running Stage Tool at 575-370-3186 2) If using Stage Tool on Surface casing, Stage Tool must be set greater than 350' from surface and a minimum of 200 feet above surface shoe. 3) When using a Stage Tool on Intermediate or Production Casing Stage must be a minimum of 50 feet below previous casing shoe.
pkautz	Gas Capture Plan - Operator to Submit Gas Capture Plan form prior spud