

District I
1625 N. French Dr., Hobbs, NM 88240
Phone:(575) 393-6161 Fax:(575) 393-0720

District II
811 S. First St., Artesia, NM 88210
Phone:(575) 748-1283 Fax:(575) 748-9720

District III
1000 Rio Brazos Rd., Aztec, NM 87410
Phone:(505) 334-6178 Fax:(505) 334-6170

District IV
1220 S. St Francis Dr., Santa Fe, NM 87505
Phone:(505) 476-3470 Fax:(505) 476-3462

State of New Mexico
Energy, Minerals and Natural Resources
Oil Conservation Division
1220 S. St Francis Dr.
Santa Fe, NM 87505

Form C-101
August 1, 2011
Permit 240270

APPLICATION FOR PERMIT TO DRILL, RE-ENTER, DEEPEN, PLUGBACK, OR ADD A ZONE

1. Operator Name and Address OXY USA WTP LIMITED PARTNERSHIP PO Box 4294 Houston, TX 77210		2. OGRID Number 192463
4. Property Code 318404		3. API Number 30-015-44386
5. Property Name TURKEY TRACK 4 3 STATE		6. Well No. 022H

7. Surface Location

UL - Lot D	Section 4	Township 19S	Range 29E	Lot Idn 4	Feet From 1156	N/S Line N	Feet From 570	E/W Line W	County Eddy
---------------	--------------	-----------------	--------------	--------------	-------------------	---------------	------------------	---------------	----------------

8. Proposed Bottom Hole Location

UL - Lot H	Section 3	Township 19S	Range 29E	Lot Idn H	Feet From 1894	N/S Line N	Feet From 180	E/W Line E	County Eddy
---------------	--------------	-----------------	--------------	--------------	-------------------	---------------	------------------	---------------	----------------

9. Pool Information

TURKEY TRACK;BONE SPRING	60660
--------------------------	-------

Additional Well Information

11. Work Type New Well	12. Well Type OIL	13. Cable/Rotary	14. Lease Type State	15. Ground Level Elevation 3408
16. Multiple N	17. Proposed Depth 18048	18. Formation 2nd Bone Spring Sand	19. Contractor	20. Spud Date 11/26/2017
Depth to Ground water		Distance from nearest fresh water well		Distance to nearest surface water

☒ We will be using a closed-loop system in lieu of lined pits

21. Proposed Casing and Cement Program

Type	Hole Size	Casing Size	Casing Weight/ft	Setting Depth	Sacks of Cement	Estimated TOC
Surf	17.5	13.375	54.5	400	307	0
Int1	12.25	9.625	36	3000	923	0
Prod	8.75	5.5	20	18048	3196	2500

Casing/Cement Program: Additional Comments

Proposed Mud Program: 0-400' Water-based Mud - 400-3000' Brine - 3000-7403' Water-based Mud - 7403'-TD Oil-based Mud. BOP Program: 13-5/8" 5M three ram stack w/ 5M annular preventer, 5M choke manifold. Additional information will be sent along with the H2S and Gas Capture plan.
--

22. Proposed Blowout Prevention Program

Type	Working Pressure	Test Pressure	Manufacturer
Annular	5000	5000	
Double Ram	5000	5000	

23. I hereby certify that the information given above is true and complete to the best of my knowledge and belief. I further certify I have complied with 19.15.14.9 (A) NMAC <input checked="" type="checkbox"/> and/or 19.15.14.9 (B) NMAC <input checked="" type="checkbox"/> if applicable. Signature:	OIL CONSERVATION DIVISION
Printed Name: Electronically filed by KELLEY MONTGOMERY	Approved By: Raymond Podany
Title: Manager Regulatory	Title: Geologist
Email Address: kelley_montgomery@oxy.com	Approved Date: 8/15/2017 Expiration Date: 8/15/2019
Date: 8/10/2017 Phone: 713-366-5716	Conditions of Approval Attached

District Office
 1622 N. Frank Dr., Hobbs, NM 88240
 Phone: (505) 393-4261 Fax: (505) 393-4720
 District Office
 811 S. First St., Artesia, NM 88210
 Phone: (505) 748-1283 Fax: (505) 748-9726
 District Office
 1000 N. Brazos Road, Aztec, NM 87410
 Phone: (505) 354-4178 Fax: (505) 354-6178
 District Office
 1220 S. St. Francis Dr., Santa Fe, NM 87505
 Phone: (505) 476-3400 Fax: (505) 476-3462

State of New Mexico
 Energy, Minerals & Natural Resources Department
OIL CONSERVATION DIVISION
 1220 South St. Francis Dr.
 Santa Fe, NM 87505

Form C-102
 Revised August 1, 2011
 Submit one copy to appropriate
 District Office

☐ AMENDED REPORT

WELL LOCATION AND ACREAGE DEDICATION PLAT

API Number 30-015	Pool Code 60660	Pool Name TURKEY TRACK; BONE SPRING
Property Code	Property Name TURKEY TRACK "4-3" STATE	Well Number 22H
GRID No. 192463	Operator Name OXY USA INC. - OXY USA WTP	Elevation 3408.9'

Surface Location

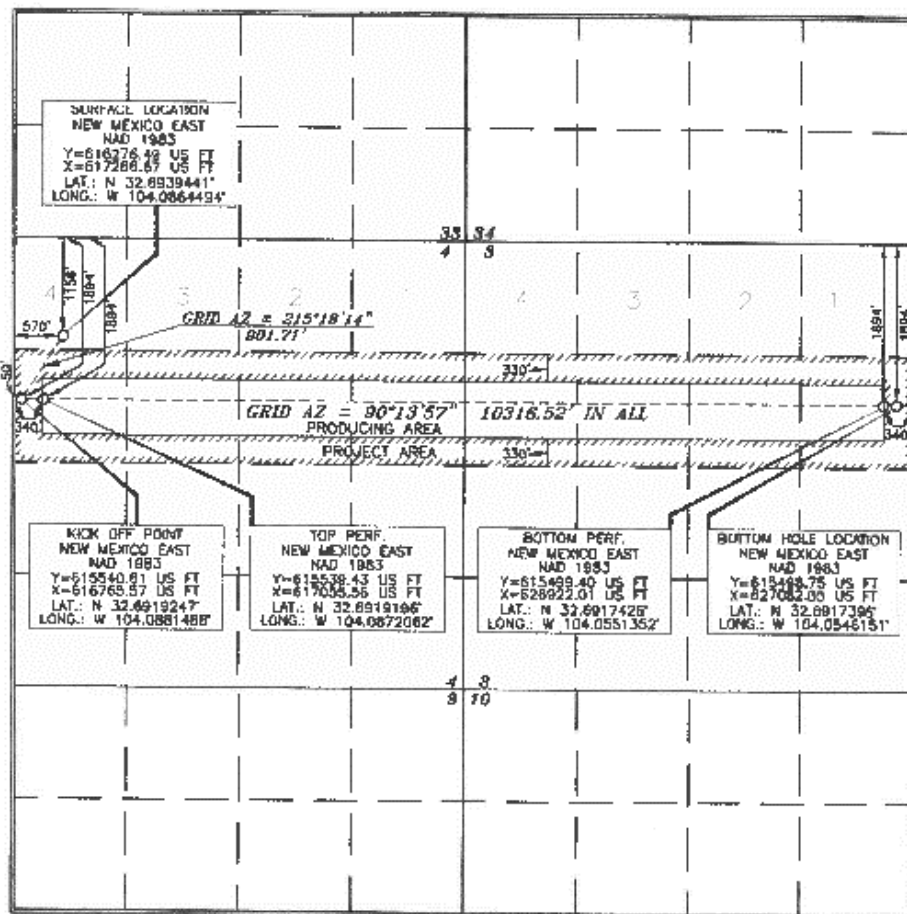
UL or lot no.	Section	Township	Range	Lot Idn	Feet from the	North/South line	Feet from the	East/West line	County
4	4	19 SOUTH	29 EAST, N.M.P.M.		1156'	NORTH	570'	WEST	EDDY

Bottom Hole Location If Different From Surface

UL or lot no.	Section	Township	Range	Lot Idn	Feet from the	North/South line	Feet from the	East/West line	County
H	3	19 SOUTH	29 EAST, N.M.P.M.		1894'	NORTH	180'	EAST	EDDY

Dedicated Acres 320	Joint or Infill Y	Consolidation Code	Order No.
-------------------------------	-----------------------------	--------------------	-----------

No allowable will be assigned to this completion until all interests have been consolidated or a non-standard unit has been approved by the division.



OPERATOR CERTIFICATION

I hereby certify that the information contained herein is true and
 complete to the best of my knowledge and belief, and that this
 organization either owns a working interest or undivided mineral
 interest in the land (including the proposed bottom hole location)
 has a right to drill this well at this location pursuant to a contract
 with an owner of such a mineral or working interest, or as a
 voluntary pooling agreement or a compulsory pooling order
 heretofore entered by the division

Signature: Taylor Stillman Date: 8/10/17

Printed Name: Taylor Stillman
 E-mail Address: Taylor-Stillman@oxy.com

SURVEYOR CERTIFICATION

I hereby certify that the well location shown on this
 plat was plotted from field notes of actual surveys
 made by me or under my supervision, and that the
 same is true and correct to the best of my belief.

Date of Survey: JULY 5, 2017

Signature and Seal of Professional Land Surveyor:

Signature: Tony J. Dal Date: 7/26/2017
 Certificate Number: 15079

WO# 170705NL-6 (NA)

District I
 1625 N. French Dr., Hobbs, NM 88240
 Phone:(575) 393-6161 Fax:(575) 393-0720
District II
 811 S. First St., Artesia, NM 88210
 Phone:(575) 748-1283 Fax:(575) 748-9720
District III
 1000 Rio Brazos Rd., Aztec, NM 87410
 Phone:(505) 334-6178 Fax:(505) 334-6170
District IV
 1220 S. St Francis Dr., Santa Fe, NM 87505
 Phone:(505) 476-3470 Fax:(505) 476-3462

State of New Mexico

Energy, Minerals and Natural Resources

Oil Conservation Division

1220 S. St Francis Dr.

Santa Fe, NM 87505

Form APD Comments

Permit 240270

PERMIT COMMENTS

Operator Name and Address: OXY USA WTP LIMITED PARTNERSHIP [192463] PO Box 4294 Houston, TX 77210		API Number: 30-015-44386
		Well: TURKEY TRACK 4 3 STATE #022H

Created By	Comment	Comment Date
justinmorris	Top Perforated Interval: 1894 FNL 340 FWL E 4-19S-29E - Lat: 32.6919196 Long: -104.0872062 Bottom Perforated Interval: 1894 FNL 340 FEL H 3-19S-29E - Lat: 32.6917426 Long: -104.0551352. A closed loop system will be utilized consisting of above ground steel tanks and haul-off bins. Disposal of liquids, drilling fluids and cuttings will be disposed of at an approved facility.	8/10/2017
justinmorris	Oxy requests the option to contract a Surface Rig to drill, set surface casing, and cement for this well. If the timing between rigs is such that Oxy would not be able to preset surface, the Primary Rig will MIRU and drill the well in its entirety per the APD. Additional information on the spudder rig will be sent with the H2S and Gas Capture Plan.	8/10/2017

District I
1625 N. French Dr., Hobbs, NM 88240
Phone:(575) 393-6161 Fax:(575) 393-0720
District II
811 S. First St., Artesia, NM 88210
Phone:(575) 748-1283 Fax:(575) 748-9720
District III
1000 Rio Brazos Rd., Aztec, NM 87410
Phone:(505) 334-6178 Fax:(505) 334-6170
District IV
1220 S. St Francis Dr., Santa Fe, NM 87505
Phone:(505) 476-3470 Fax:(505) 476-3462

State of New Mexico
Energy, Minerals and Natural Resources
Oil Conservation Division
1220 S. St Francis Dr.
Santa Fe, NM 87505

Form APD Conditions

Permit 240270

PERMIT CONDITIONS OF APPROVAL

Operator Name and Address: OXY USA WTP LIMITED PARTNERSHIP [192463] PO Box 4294 Houston, TX 77210		API Number: 30-015-44386
		Well: TURKEY TRACK 4 3 STATE #022H
OCD Reviewer	Condition	
RPodany	Will require a directional survey with the C-104	
RPodany	Cement is required to circulate on both surface and intermediate1 strings of casing	