

District I
1625 N. French Dr., Hobbs, NM 88240
Phone:(575) 393-6161 Fax:(575) 393-0720

District II
811 S. First St., Artesia, NM 88210
Phone:(575) 748-1283 Fax:(575) 748-9720

District III
1000 Rio Brazos Rd., Aztec, NM 87410
Phone:(505) 334-6178 Fax:(505) 334-6170

District IV
1220 S. St Francis Dr., Santa Fe, NM 87505
Phone:(505) 476-3470 Fax:(505) 476-3462

State of New Mexico
Energy, Minerals and Natural Resources
Oil Conservation Division
1220 S. St Francis Dr.
Santa Fe, NM 87505

Form C-101
August 1, 2011
Permit 243711

APPLICATION FOR PERMIT TO DRILL, RE-ENTER, DEEPEN, PLUGBACK, OR ADD A ZONE

| | | |
|---|--|-------------------------------|
| 1. Operator Name and Address OXY USA WTP LIMITED PARTNERSHIP PO Box 4294 Houston, TX 77210 | | 2. OGRID Number 192463 |
| 4. Property Code 318404 | | 3. API Number 30-015-44517 |
| 5. Property Name TURKEY TRACK 4 3 STATE | | 6. Well No. 033H |

7. Surface Location

| | | | | | | | | | |
|----------|---------|----------|-------|---------|-----------|----------|-----------|----------|--------|
| UL - Lot | Section | Township | Range | Lot Idn | Feet From | N/S Line | Feet From | E/W Line | County |
| L | 4 | 19S | 29E | L | 1660 | S | 360 | W | Eddy |

8. Proposed Bottom Hole Location

| | | | | | | | | | |
|----------|---------|----------|-------|---------|-----------|----------|-----------|----------|--------|
| UL - Lot | Section | Township | Range | Lot Idn | Feet From | N/S Line | Feet From | E/W Line | County |
| I | 3 | 19S | 29E | I | 1894 | S | 180 | E | Eddy |

9. Pool Information

| | |
|--------------------------|-------|
| TURKEY TRACK;BONE SPRING | 60660 |
|--------------------------|-------|

Additional Well Information

| | | | | |
|---------------------------|-----------------------------|--|-------------------------|------------------------------------|
| 11. Work Type New Well | 12. Well Type OIL | 13. Cable/Rotary | 14. Lease Type State | 15. Ground Level Elevation 3404 |
| 16. Multiple N | 17. Proposed Depth 18820 | 18. Formation 3rd Bone Spring Sand | 19. Contractor | 20. Spud Date 1/1/2019 |
| Depth to Ground water | | Distance from nearest fresh water well | | Distance to nearest surface water |

☒ We will be using a closed-loop system in lieu of lined pits

21. Proposed Casing and Cement Program

| Type | Hole Size | Casing Size | Casing Weight/ft | Setting Depth | Sacks of Cement | Estimated TOC |
|------|-----------|-------------|------------------|---------------|-----------------|---------------|
| Surf | 17.5 | 13.375 | 54.5 | 400 | 401 | 0 |
| Int1 | 12.25 | 9.625 | 36 | 3000 | 923 | 0 |
| Prod | 8.75 | 5.5 | 20 | 18820 | 3352 | 2500 |

Casing/Cement Program: Additional Comments

| |
|--|
| Proposed Mud Program: 0-400' Water-Based Mud - 400-3000' Brine - 3000-8179' Water-Based Mud - 8179'-TD Oil Based Mud. BOP Program: 13-5/8" 5M three ram stack w/ 5M annular preventer, 5M choke manifold. Additional information will be sent along with the H2S and Gas Capture Plan. |
|--|

22. Proposed Blowout Prevention Program

| Type | Working Pressure | Test Pressure | Manufacturer |
|------------|------------------|---------------|--------------|
| Annular | 5000 | 5000 | |
| Double Ram | 5000 | 5000 | |

| | |
|--|--|
| 23. I hereby certify that the information given above is true and complete to the best of my knowledge and belief. I further certify I have complied with 19.15.14.9 (A) NMAC <input checked="" type="checkbox"/> and/or 19.15.14.9 (B) NMAC <input checked="" type="checkbox"/> if applicable. Signature: | OIL CONSERVATION DIVISION |
| Printed Name: Electronically filed by KELLEY MONTGOMERY | Approved By: Raymond Podany |
| Title: Manager Regulatory | Title: Geologist |
| Email Address: kelley_montgomery@oxy.com | Approved Date: 11/3/2017 Expiration Date: 11/3/2019 |
| Date: 10/31/2017 Phone: 713-366-5716 | Conditions of Approval Attached |

District I
1625 N. French Dr., Hobbs, NM 88240
Phone: (505) 393-6161 Fax: (505) 393-0720
District II
811 S. First St., Artesia, NM 88210
Phone: (505) 748-1283 Fax: (505) 748-0720
District III
1000 Rio Brazos Road, Aztec, NM 87410
Phone: (505) 334-6178 Fax: (505) 334-6170
District IV
1220 S. St. Francis Dr., Santa Fe, NM 87505
Phone: (505) 476-3460 Fax: (505) 476-3462

State of New Mexico
Energy, Minerals & Natural Resources Department
OIL CONSERVATION DIVISION
1220 South St. Francis Dr.
Santa Fe, NM 87505

Form C-102
Revised August 1, 2011
Submit one copy to appropriate
District Office

☐ AMENDED REPORT

WELL LOCATION AND ACREAGE DEDICATION PLAT

| | | |
|-----------------------|--|--|
| API Number 30-015- | Pool Code 60660 | Pool Name Turkey Track; Bone Spring |
| Property Code | Property Name TURKEY TRACK "4-3" STATE | Well Number 33H |
| OGRID No. 192463 | Operator Name OXY USA WTP Ltd Partnership | Elevation 3404.1' |

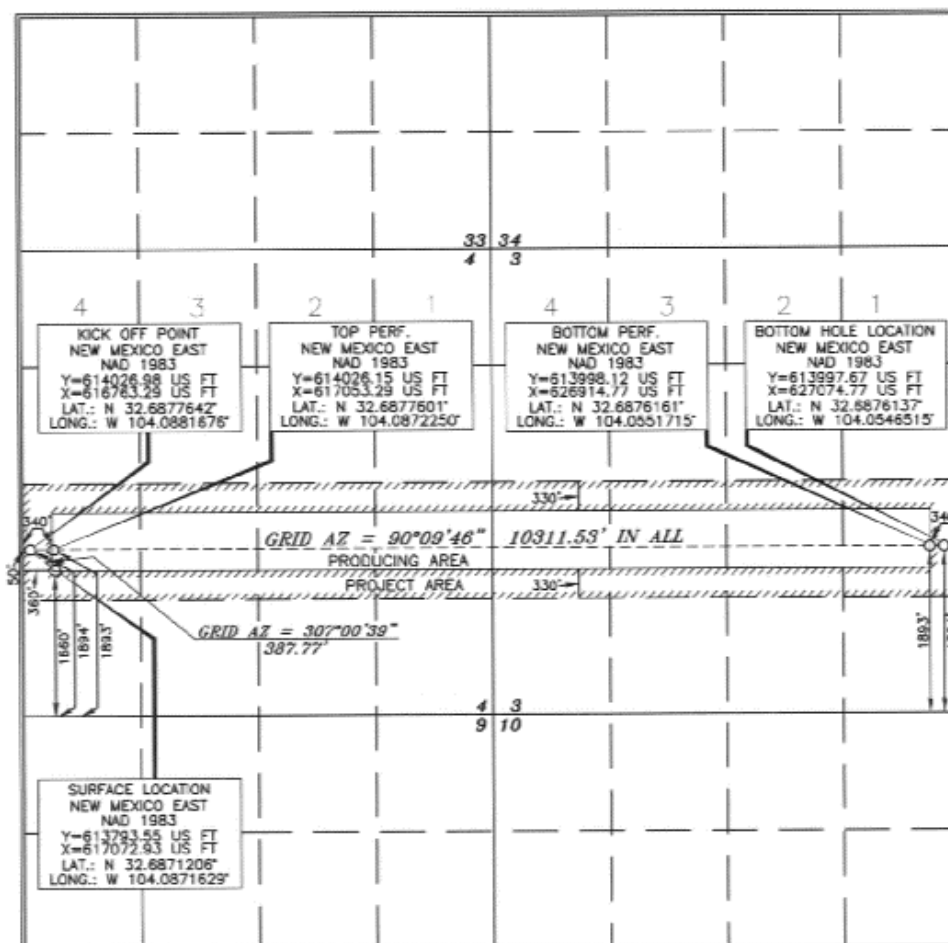
Surface Location

| UL or lot no. | Section | Township | Range | Lot Idn | Feet from the | North/South line | Feet from the | East/West line | County |
|---------------|---------|----------|-------------------|---------|---------------|------------------|---------------|----------------|--------|
| L | 4 | 19 SOUTH | 29 EAST, N.M.P.M. | | 1660' | SOUTH | 360' | WEST | EDDY |

Bottom Hole Location If Different From Surface

| UL or lot no. | Section | Township | Range | Lot Idn | Feet from the | North/South line | Feet from the | East/West line | County |
|------------------------|----------------------|--------------------|-------------------|---------|---------------|------------------|---------------|----------------|--------|
| I | 3 | 19 SOUTH | 29 EAST, N.M.P.M. | | 1894' | SOUTH | 180' | EAST | EDDY |
| Dedicated Acres 320 | Joint or Infill Y | Consolidation Code | Order No. | | | | | | |

No allowable will be assigned to this completion until all interests have been consolidated or a non-standard unit has been approved by the division.



OPERATOR CERTIFICATION

I hereby certify that the information contained herein is true and complete to the best of my knowledge and belief, and that this organization either owns a working interest or undivided mineral interest in the land including the proposed bottom hole location or has a right to drill this well at this location pursuant to a contract with an owner of such a mineral or working interest, or to a voluntary pooling agreement or a compulsory pooling order heretofore entered by the division.

Signature: Sarah Mitchell Date: 10/31/2017
Printed Name: Sarah Mitchell
E-mail Address: sarah_mitchell@oxy.com

SURVEYOR CERTIFICATION

I hereby certify that the well location shown on this plat was plotted from the MEXICAN National Surveys made by me or under my supervision, and that the same is true and correct to the best of my belief.

Date of Survey: JULY 17, 2017
Signature and Seal of Professional Surveyor: Terry J. As...

Certificate Number: 15079

WO# 170717WL-o (KA)

District I
 1625 N. French Dr., Hobbs, NM 88240
 Phone:(575) 393-6161 Fax:(575) 393-0720
District II
 811 S. First St., Artesia, NM 88210
 Phone:(575) 748-1283 Fax:(575) 748-9720
District III
 1000 Rio Brazos Rd., Aztec, NM 87410
 Phone:(505) 334-6178 Fax:(505) 334-6170
District IV
 1220 S. St Francis Dr., Santa Fe, NM 87505
 Phone:(505) 476-3470 Fax:(505) 476-3462

State of New Mexico
Energy, Minerals and Natural Resources
Oil Conservation Division
1220 S. St Francis Dr.
Santa Fe, NM 87505

Form APD Comments

Permit 243711

PERMIT COMMENTS

| | |
|--|---------------------------------------|
| Operator Name and Address: OXY USA WTP LIMITED PARTNERSHIP [192463] PO Box 4294 Houston, TX 77210 | API Number: 30-015-44517 |
| | Well: TURKEY TRACK 4 3 STATE #033H |

| Created By | Comment | Comment Date |
|------------|--|--------------|
| mitchells | Top perforated interval: 1893 FSL 340 FWL L 4-19S-29E- Lat:32.6877601 Long: 104.0872250. Bottom perforated interval: 1893 FSL 340 FEL I 3-19S-29E- Lat: 32.6876161 Long: 104.0551715. A closed loop system will be utilized consisting of above ground steel tanks and haul-off bins. Disposal of liquids, drilling fluids and cuttings will be disposed of at an approved facility. | 10/31/2017 |
| mitchells | OXY requests the option to contract a Surface Rig to drill, set surface casing, and cement for this well. If the timing between rigs is such that OXY would not be able to preset surface, the Primary Rig will MIRU and drill the well in its entirety per the APD. Please see the attached document for information on the spudder rig. | 10/31/2017 |

District I
1625 N. French Dr., Hobbs, NM 88240
Phone:(575) 393-6161 Fax:(575) 393-0720
District II
811 S. First St., Artesia, NM 88210
Phone:(575) 748-1283 Fax:(575) 748-9720
District III
1000 Rio Brazos Rd., Aztec, NM 87410
Phone:(505) 334-6178 Fax:(505) 334-6170
District IV
1220 S. St Francis Dr., Santa Fe, NM 87505
Phone:(505) 476-3470 Fax:(505) 476-3462

State of New Mexico
Energy, Minerals and Natural Resources
Oil Conservation Division
1220 S. St Francis Dr.
Santa Fe, NM 87505

Form APD Conditions

Permit 243711

PERMIT CONDITIONS OF APPROVAL

| | | |
|--|---|---------------------------------------|
| Operator Name and Address: OXY USA WTP LIMITED PARTNERSHIP [192463] PO Box 4294 Houston, TX 77210 | | API Number: 30-015-44517 |
| | | Well: TURKEY TRACK 4 3 STATE #033H |
| OCD Reviewer | Condition | |
| RPodany | Will require a directional survey with the C-104 | |
| RPodany | Cement is required to circulate on both surface and intermediate1 strings of casing | |