

District I
1625 N. French Dr., Hobbs, NM 88240
Phone:(575) 393-6161 Fax:(575) 393-0720

District II
811 S. First St., Artesia, NM 88210
Phone:(575) 748-1283 Fax:(575) 748-9720

District III
1000 Rio Brazos Rd., Aztec, NM 87410
Phone:(505) 334-6178 Fax:(505) 334-6170

District IV
1220 S. St Francis Dr., Santa Fe, NM 87505
Phone:(505) 476-3470 Fax:(505) 476-3462

State of New Mexico
Energy, Minerals and Natural Resources
Oil Conservation Division
1220 S. St Francis Dr.
Santa Fe, NM 87505

Form C-101
August 1, 2011
Permit 256376

APPLICATION FOR PERMIT TO DRILL, RE-ENTER, DEEPEN, PLUGBACK, OR ADD A ZONE

1. Operator Name and Address CHISHOLM ENERGY OPERATING, LLC 801 Cherry Street Fort Worth, TX 76102		2. OGRID Number 372137
4. Property Code 322275		3. API Number 30-025-45131
5. Property Name GAZELLE 32 STATE COM 1BS		6. Well No. 003H

7. Surface Location

UL - Lot D	Section 32	Township 18S	Range 33E	Lot Idn D	Feet From 110	N/S Line N	Feet From 1270	E/W Line W	County Lea
---------------	---------------	-----------------	--------------	--------------	------------------	---------------	-------------------	---------------	---------------

8. Proposed Bottom Hole Location

UL - Lot M	Section 32	Township 18S	Range 33E	Lot Idn M	Feet From 100	N/S Line S	Feet From 510	E/W Line W	County Lea
---------------	---------------	-----------------	--------------	--------------	------------------	---------------	------------------	---------------	---------------

9. Pool Information

CORBIN;BONE SPRING, SOUTH	13160
---------------------------	-------

Additional Well Information

11. Work Type New Well	12. Well Type OIL	13. Cable/Rotary	14. Lease Type State	15. Ground Level Elevation 3759
16. Multiple N	17. Proposed Depth 13900	18. Formation 1st Bone Spring Sand	19. Contractor	20. Spud Date 10/15/2018
Depth to Ground water		Distance from nearest fresh water well		Distance to nearest surface water

☒ We will be using a closed-loop system in lieu of lined pits

21. Proposed Casing and Cement Program

Type	Hole Size	Casing Size	Casing Weight/ft	Setting Depth	Sacks of Cement	Estimated TOC
Surf	17.5	13.375	54.5	1400	1190	0
Int1	12.25	9.625	40	5610	1395	0
Prod	8.75	5.5	17	13900	2035	0

Casing/Cement Program: Additional Comments

--

22. Proposed Blowout Prevention Program

Type	Working Pressure	Test Pressure	Manufacturer
Annular	2500	2500	CAMERON
Double Ram	5000	5000	CAMERON
Pipe	5000	5000	CAMERON

23. I hereby certify that the information given above is true and complete to the best of my knowledge and belief. I further certify I have complied with 19.15.14.9 (A) NMAC <input checked="" type="checkbox"/> and/or 19.15.14.9 (B) NMAC <input checked="" type="checkbox"/> if applicable. Signature:	OIL CONSERVATION DIVISION
Printed Name: Electronically filed by Jennifer Elrod	Approved By: Paul F Kautz
Title: Sr. Regulatory Tech	Title: Geologist
Email Address: jelrod@chisholmenergy.com	Approved Date: 8/22/2018 Expiration Date: 8/22/2020
Date: 8/21/2018 Phone: 817-953-3728	Conditions of Approval Attached

DISTRICT I
1825 N. French Dr., Hobbs, NM 88240
Phone (505) 393-8181 Fax: (505) 393-0720

DISTRICT II
811 S. First St., Artesia, NM 88210
Phone (505) 746-1263 Fax: (505) 746-9720

DISTRICT III
1000 Rio Braxos Rd., Aztec, NM 87410
Phone (505) 334-6178 Fax: (505) 334-6170

DISTRICT IV
1226 S. St. Francis Dr., Santa Fe, NM 87505
Phone (505) 476-3450 Fax: (505) 476-3452

State of New Mexico
Energy, Minerals and Natural Resources Department

Form C-102
Revised August 1, 2011

Submit one copy to appropriate
District Office

OIL CONSERVATION DIVISION
1226 South St. Francis Dr.
Santa Fe, New Mexico 87505

WELL LOCATION AND ACREAGE DEDICATION PLAT

☐ AMENDED REPORT

API Number	Pool Code 13160	Pool Name CORBIN; BONE SPRING, SOUTH
Property Code	Property Name GAZELLE 32 STATE COM 1BS	Well Number 3H
GRID No. 372137	Operator Name CHISHOLM ENERGY OPERATING, LLC	Elevation 3759'

Surface Location

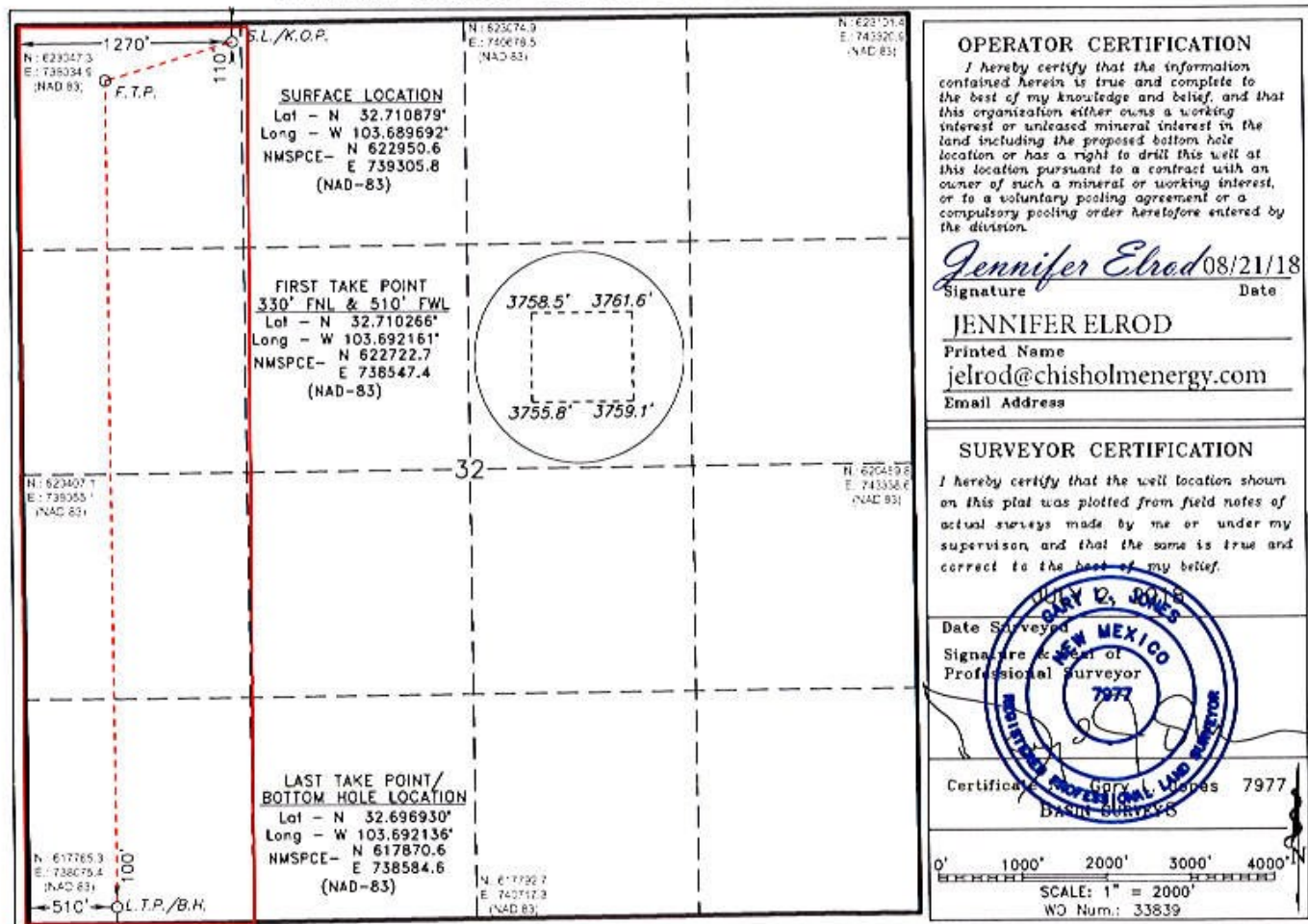
UL or lot No.	Section	Township	Range	Lot Idn	FEET from the	North/SOUTH LINE	FEET from the	East/West line	County
D	32	18 S	33 E		110	NORTH	1270	WEST	LEA

Bottom Hole Location If Different From Surface

UL or lot No.	Section	Township	Range	Lot Idn	FEET from the	North/SOUTH LINE	FEET from the	East/West Line	County
M	32	18 S	33 E		100	SOUTH	510	WEST	LEA

Dedicated Acres 160	Joint or Infill INFILL	Consolidation Code	Order No.
------------------------	---------------------------	--------------------	-----------

NO ALLOWABLE WILL BE ASSIGNED TO THIS COMPLETION UNTIL ALL INTERESTS HAVE BEEN CONSOLIDATED
OR A NON-STANDARD UNIT HAS BEEN APPROVED BY THE DIVISION



District I
 1625 N. French Dr., Hobbs, NM 88240
 Phone:(575) 393-6161 Fax:(575) 393-0720

District II
 811 S. First St., Artesia, NM 88210
 Phone:(575) 748-1283 Fax:(575) 748-9720

District III
 1000 Rio Brazos Rd., Aztec, NM 87410
 Phone:(505) 334-6178 Fax:(505) 334-6170

District IV
 1220 S. St Francis Dr., Santa Fe, NM 87505
 Phone:(505) 476-3470 Fax:(505) 476-3462

State of New Mexico

Energy, Minerals and Natural Resources

Oil Conservation Division

1220 S. St Francis Dr.

Santa Fe, NM 87505

Form APD Comments

Permit 256376

PERMIT COMMENTS

Operator Name and Address:		API Number:
CHISHOLM ENERGY OPERATING, LLC [372137]		30-025-45131
801 Cherry Street		Well:
Fort Worth, TX 76102		GAZELLE 32 STATE COM 1BS #003H

Created By	Comment	Comment Date
pkautz	Received GCP 08/22/2018	8/22/2018

District I
 1625 N. French Dr., Hobbs, NM 88240
 Phone:(575) 393-6161 Fax:(575) 393-0720
District II
 811 S. First St., Artesia, NM 88210
 Phone:(575) 748-1283 Fax:(575) 748-9720
District III
 1000 Rio Brazos Rd., Aztec, NM 87410
 Phone:(505) 334-6178 Fax:(505) 334-6170
District IV
 1220 S. St Francis Dr., Santa Fe, NM 87505
 Phone:(505) 476-3470 Fax:(505) 476-3462

State of New Mexico
Energy, Minerals and Natural Resources
Oil Conservation Division
1220 S. St Francis Dr.
Santa Fe, NM 87505

Form APD Conditions

Permit 256376

PERMIT CONDITIONS OF APPROVAL

Operator Name and Address: CHISHOLM ENERGY OPERATING, LLC [372137] 801 Cherry Street Fort Worth, TX 76102	API Number: 30-025-45131
	Well: GAZELLE 32 STATE COM 1BS #003H

OCD Reviewer	Condition
pkautz	Will require a directional survey with the C-104
pkautz	1) SURFACE & INTERMEDIATE CASING - Cement must circulate to surface -- 2) PRODUCTION CASING - Cement must tie back into intermediate casing --
pkautz	If cement does not circulate to surface, must run temperature survey or other log to determine top of cement
pkautz	Surface casing must be set 25' below top of Rustler Anhydrite in order to seal off protectable water
pkautz	1)- The Operator is to notify NMOCD by sundry (Form C-103) within ten (10) days of the well being spud 2)- Drilling Sundries Form C-103 (Casing and Cement test are to be submitted within 10 days 3)- Completion Reports & Logs are to be submitted within 45 days 4)- Deviation / Directional Drill Survey are to be filed with or prior to C-104
pkautz	It is the operator's responsibility to monitor cancellation dates of approved APDs. APD's are good for 2 years and may be extended for one year. Only one 1 year extension will be granted if submitted by C-103 before expiration date. After expiration date or after a 1 year extension must submit new APD.