

**District I**  
1625 N. French Dr., Hobbs, NM 88240  
Phone:(575) 393-6161 Fax:(575) 393-0720

**District II**  
811 S. First St., Artesia, NM 88210  
Phone:(575) 748-1283 Fax:(575) 748-9720

**District III**  
1000 Rio Brazos Rd., Aztec, NM 87410  
Phone:(505) 334-6178 Fax:(505) 334-6170

**District IV**  
1220 S. St Francis Dr., Santa Fe, NM 87505  
Phone:(505) 476-3470 Fax:(505) 476-3462

**State of New Mexico**  
**Energy, Minerals and Natural Resources**  
**Oil Conservation Division**  
**1220 S. St Francis Dr.**  
**Santa Fe, NM 87505**

Form C-101  
August 1, 2011  
Permit 256474

**APPLICATION FOR PERMIT TO DRILL, RE-ENTER, DEEPEN, PLUGBACK, OR ADD A ZONE**

1. Operator Name and Address APACHE CORPORATION 303 Veterans Airpark Ln Midland, TX 79705		2. OGRID Number 873
4. Property Code 322494		3. API Number 30-015-45282
5. Property Name PALMILLO 21 STATE COM		6. Well No. 325H

**7. Surface Location**

UL - Lot E	Section 21	Township 19S	Range 28E	Lot Idn E	Feet From 1675	N/S Line N	Feet From 370	E/W Line W	County Eddy
---------------	---------------	-----------------	--------------	--------------	-------------------	---------------	------------------	---------------	----------------

**8. Proposed Bottom Hole Location**

UL - Lot A	Section 21	Township 19S	Range 28E	Lot Idn A	Feet From 1255	N/S Line N	Feet From 50	E/W Line E	County Eddy
---------------	---------------	-----------------	--------------	--------------	-------------------	---------------	-----------------	---------------	----------------

**9. Pool Information**

WINCHESTER; BONE SPRING, WEST	97569
-------------------------------	-------

**Additional Well Information**

11. Work Type New Well	12. Well Type OIL	13. Cable/Rotary	14. Lease Type State	15. Ground Level Elevation 3457
16. Multiple N	17. Proposed Depth 13393	18. Formation 3rd Bone Spring Sand	19. Contractor	20. Spud Date 12/15/2018
Depth to Ground water		Distance from nearest fresh water well		Distance to nearest surface water

☒ We will be using a closed-loop system in lieu of lined pits

**21. Proposed Casing and Cement Program**

Type	Hole Size	Casing Size	Casing Weight/ft	Setting Depth	Sacks of Cement	Estimated TOC
Surf	17.5	13.375	48	325	235	0
Int1	12.25	9.625	36	3000	625	0
Prod	8.5	5.5	17	13393	862	8769
Prod	8.75	5.5	17	8769	717	2500

**Casing/Cement Program: Additional Comments**

Apache respectfully request approval to utilize spudder rig to pre-set surface casing in order to minimize cost and improve efficiency. Spudder rig plan attached.
--

**22. Proposed Blowout Prevention Program**

Type	Working Pressure	Test Pressure	Manufacturer
Annular	3000	1500	
Double Ram	3000	3000	

23. I hereby certify that the information given above is true and complete to the best of my knowledge and belief. <b>I further certify I have complied with 19.15.14.9 (A) NMAC <input checked="" type="checkbox"/> and/or 19.15.14.9 (B) NMAC <input checked="" type="checkbox"/> if applicable.</b>  Signature:	<b>OIL CONSERVATION DIVISION</b>
Printed Name: Electronically filed by Sorina Flores	Approved By: Raymond Podany
Title: Supv of Drilling Services	Title: Geologist
Email Address: sorina.flores@apachecorp.com	Approved Date: 10/1/2018      Expiration Date: 10/1/2020
Date: 9/27/2018      Phone: 432-818-1167	Conditions of Approval Attached

District I  
1625 N. French Dr., Hobbs, NM 88240  
Phone: (575) 393-6161 Fax: (575) 393-0720  
District II  
811 S. First St., Artesia, NM 88210  
Phone: (575) 748-1283 Fax: (575) 748-9720  
District III  
1000 Rio Brazos Road, Aztec, NM 87410  
Phone: (505) 334-6178 Fax: (505) 334-6170  
District IV  
1220 S. St. Francis Dr., Santa Fe, NM 87505  
Phone: (505) 476-3460 Fax: (505) 476-3462

State of New Mexico  
Energy, Minerals & Natural Resources Department  
OIL CONSERVATION DIVISION  
1220 South St. Francis Dr.  
Santa Fe, NM 87505

Form C-102  
Revised August 1, 2011  
Submit one copy to appropriate  
District Office

☐ AMENDED REPORT

WELL LOCATION AND ACREAGE DEDICATION PLAT

<sup>1</sup> API Number 30-015-	<sup>2</sup> Pool Code 97569	<sup>3</sup> Pool Name WINCHESTER; BONESPRING, W
<sup>4</sup> Property Code	<sup>5</sup> Property Name PALMILLO 21 STATE COM	<sup>6</sup> Well Number 325H
<sup>7</sup> OGRID NO. 873	<sup>8</sup> Operator Name APACHE CORPORATION	<sup>9</sup> Elevation 3458'

<sup>10</sup> Surface Location

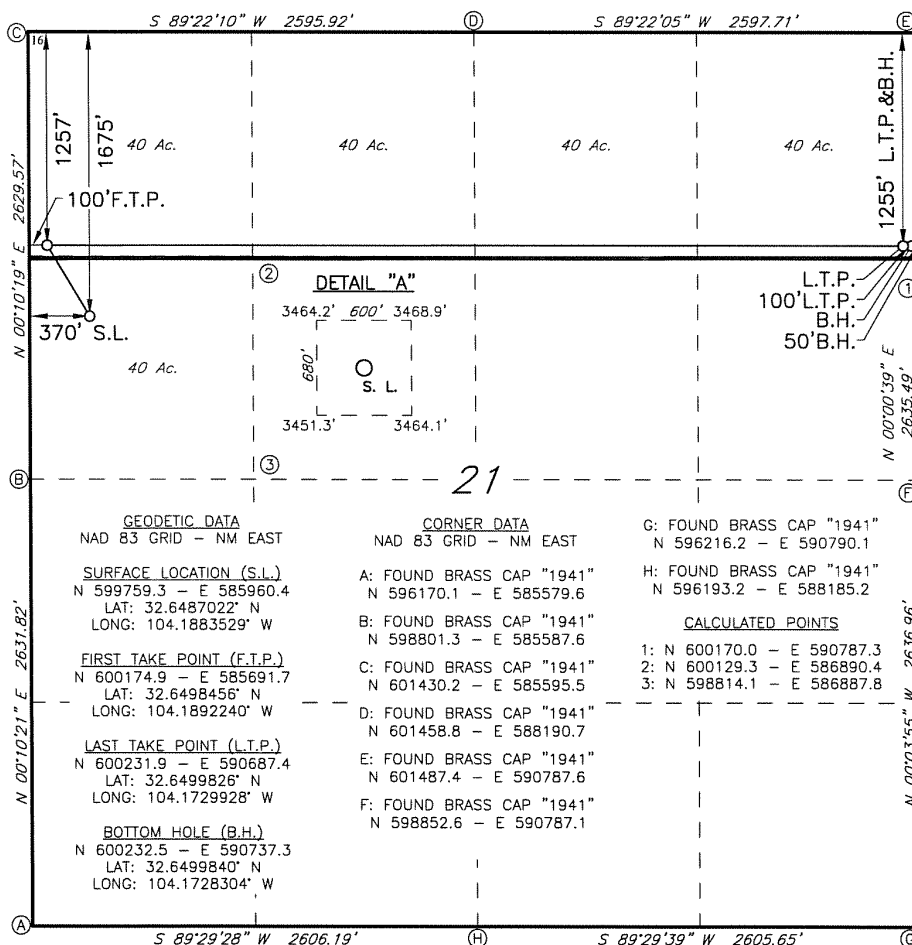
UL or lot no.	Section	Township	Range	Lot Idn	Feet from the	North/South line	Feet From the	East/West line	County
E	21	19S	28E		1675	NORTH	370	WEST	EDDY

<sup>11</sup> Bottom Hole Location If Different From Surface

UL or lot no.	Section	Township	Range	Lot Idn	Feet from the	North/South line	Feet from the	East/West line	County
A	21	19S	28E		1255	NORTH	50	EAST	EDDY

<sup>12</sup> Dedicated Acres 160	<sup>13</sup> Joint or Infill	<sup>14</sup> Consolidation Code	<sup>15</sup> Order No.
--------------------------------------	-------------------------------	----------------------------------	-------------------------

No allowable will be assigned to this completion until all interest have been consolidated or a non-standard unit has been approved by the division.



<sup>17</sup> OPERATOR CERTIFICATION

I hereby certify that the information contained herein is true and complete to the best of my knowledge and belief, and that this organization either owns a working interest or unleased mineral interest in the land including the proposed bottom hole location or has a right to drill this well at this location pursuant to a contract with an owner of such a mineral or working interest, or to a voluntary pooling agreement or a compulsory pooling order heretofore entered by the division.

*Sorina L Flores* 9/26/18  
Signature Date  
Sorina L Flores  
Printed Name  
sorina.flores@apachecorp.com  
E-mail Address

<sup>18</sup> SURVEYOR CERTIFICATION

I hereby certify that the well location shown on this plat was plotted from field notes of actual surveys made by me or under my supervision, and that the same is true and correct to the best of my belief.

8-21-18

Date of Survey

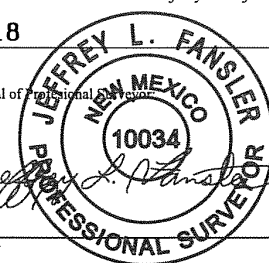
Signature and Seal of Professional Surveyor

10034

Certificate Number

9-24-18 DRILL PLAN

Job No.: LS1808998DP



**District I**  
1625 N. French Dr., Hobbs, NM 88240  
Phone:(575) 393-6161 Fax:(575) 393-0720

**District II**  
811 S. First St., Artesia, NM 88210  
Phone:(575) 748-1283 Fax:(575) 748-9720

**District III**  
1000 Rio Brazos Rd., Aztec, NM 87410  
Phone:(505) 334-6178 Fax:(505) 334-6170

**District IV**  
1220 S. St Francis Dr., Santa Fe, NM 87505  
Phone:(505) 476-3470 Fax:(505) 476-3462

**State of New Mexico**  
**Energy, Minerals and Natural Resources**  
**Oil Conservation Division**  
**1220 S. St Francis Dr.**  
**Santa Fe, NM 87505**

Form APD Comments

Permit 256474

**PERMIT COMMENTS**

Operator Name and Address: APACHE CORPORATION [873] 303 Veterans Airpark Ln Midland, TX 79705		API Number: 30-015-45282
		Well: PALMILLO 21 STATE COM #325H

Created By	Comment	Comment Date
------------	---------	--------------

**District I**  
1625 N. French Dr., Hobbs, NM 88240  
Phone:(575) 393-6161 Fax:(575) 393-0720  
**District II**  
811 S. First St., Artesia, NM 88210  
Phone:(575) 748-1283 Fax:(575) 748-9720  
**District III**  
1000 Rio Brazos Rd., Aztec, NM 87410  
Phone:(505) 334-6178 Fax:(505) 334-6170  
**District IV**  
1220 S. St Francis Dr., Santa Fe, NM 87505  
Phone:(505) 476-3470 Fax:(505) 476-3462

**State of New Mexico**  
**Energy, Minerals and Natural Resources**  
**Oil Conservation Division**  
**1220 S. St Francis Dr.**  
**Santa Fe, NM 87505**

Form APD Conditions  
  
Permit 256474

**PERMIT CONDITIONS OF APPROVAL**

Operator Name and Address: APACHE CORPORATION [873] 303 Veterans Airpark Ln Midland, TX 79705		API Number: 30-015-45282
		Well: PALMILLO 21 STATE COM #325H
OCD Reviewer	Condition	
rpodany	Will require a directional survey with the C-104	
rpodany	Cement is required to circulate on both surface and intermediate1 strings of casing	