

District I
1625 N. French Dr., Hobbs, NM 88240
Phone:(575) 393-6161 Fax:(575) 393-0720

District II
811 S. First St., Artesia, NM 88210
Phone:(575) 748-1283 Fax:(575) 748-9720

District III
1000 Rio Brazos Rd., Aztec, NM 87410
Phone:(505) 334-6178 Fax:(505) 334-6170

District IV
1220 S. St Francis Dr., Santa Fe, NM 87505
Phone:(505) 476-3470 Fax:(505) 476-3462

State of New Mexico
Energy, Minerals and Natural Resources
Oil Conservation Division
1220 S. St Francis Dr.
Santa Fe, NM 87505

Form C-101
August 1, 2011
Permit 258616

APPLICATION FOR PERMIT TO DRILL, RE-ENTER, DEEPEN, PLUGBACK, OR ADD A ZONE

1. Operator Name and Address CENTENNIAL RESOURCE PRODUCTION, LLC 1001 17th Street, Suite 18 Denver, CO 80202		2. OGRID Number 372165
4. Property Code 321644		3. API Number 30-025-45266
5. Property Name DUCK HUNT 1 STATE COM		6. Well No. 601H

7. Surface Location

UL - Lot I	Section 1	Township 23S	Range 34E	Lot Idn I	Feet From 2340	N/S Line S	Feet From 741	E/W Line E	County Lea
---------------	--------------	-----------------	--------------	--------------	-------------------	---------------	------------------	---------------	---------------

8. Proposed Bottom Hole Location

UL - Lot P	Section 12	Township 23S	Range 34E	Lot Idn P	Feet From 100	N/S Line S	Feet From 330	E/W Line E	County Lea
---------------	---------------	-----------------	--------------	--------------	------------------	---------------	------------------	---------------	---------------

9. Pool Information

ANTELOPE RIDGE;BONE SPRING, NORTH	2205
-----------------------------------	------

Additional Well Information

11. Work Type New Well	12. Well Type OIL	13. Cable/Rotary	14. Lease Type State	15. Ground Level Elevation 3364
16. Multiple N	17. Proposed Depth 18150	18. Formation 3rd Bone Spring Sand	19. Contractor	20. Spud Date 12/15/2018
Depth to Ground water		Distance from nearest fresh water well		Distance to nearest surface water

☒ We will be using a closed-loop system in lieu of lined pits

21. Proposed Casing and Cement Program

Type	Hole Size	Casing Size	Casing Weight/ft	Setting Depth	Sacks of Cement	Estimated TOC
Surf	17.5	13.375	54.5	1200	974	0
Int1	12.25	9.625	40	5500	2198	0
Prod	8.5	5.5	20	18150	1818	10277
Prod	8.75	5.5	20	10277	891	0

Casing/Cement Program: Additional Comments

Drilling 8.75 hole size for the curve and 8.5 hole size for the lateral for the 5.5 production casing string.

22. Proposed Blowout Prevention Program

Type	Working Pressure	Test Pressure	Manufacturer
Double Ram	10000	5000	Cameron

23. I hereby certify that the information given above is true and complete to the best of my knowledge and belief. I further certify I have complied with 19.15.14.9 (A) NMAC <input checked="" type="checkbox"/> and/or 19.15.14.9 (B) NMAC <input checked="" type="checkbox"/> if applicable. Signature: Printed Name: Electronically filed by Sarah Ferreyros Title: Senior Regulatory Analyst Email Address: Sarah.Ferreyros@cdevinc.com Date: 10/15/2018	<p style="text-align: center;">OIL CONSERVATION DIVISION</p> Approved By: Paul F Kautz Title: Geologist Approved Date: 10/17/2018 Expiration Date: 10/17/2020 Conditions of Approval Attached
-------------------------------------------------------------------------------------------------------------------------------------------------------------------------------------------------------------------------------------------------------------------------------------------------------------------------------------------------------------------------------------------------------------------------------------------------------------------------------------	------------------------------------------------------------------------------------------------------------------------------------------------------------------------------------------------------------------

District I
1625 N. French Dr., Hobbs, NM 88240
Phone: (575) 393-6161 Fax: (575) 393-0728

District II
811 S. First St., Artesia, NM 88210
Phone: (575) 748-1283 Fax: (575) 748-8720

District III
1899 Rio Arriba Road, Aztec, NM 87418
Phone: (505) 334-6176 Fax: (505) 334-6170

District IV
1220 S. St. Francis Dr., Santa Fe, NM 87505
Phone: (505) 436-3460 Fax: (505) 476-3452

State of New Mexico
Energy, Minerals & Natural Resources Department
OIL CONSERVATION DIVISION
1220 South St. Francis Dr.
Santa Fe, NM 87505

Form C-102
Revised August 1, 2011
Submit one copy to appropriate
District Office

☐ AMENDED REPORT

WELL LOCATION AND ACREAGE DEDICATION PLAT

¹ APE Number	² Pool Code	³ Pool Name
	2205	Antelope Ridge, Bone Spring, North
⁴ Property Code	⁵ Property Name	⁶ Well Number
	DUCK HUNT 1 STATE COM	#601H
⁷ OGRID No.	⁸ Operator Name	⁹ Elevation
372165	CENTENNIAL RESOURCE PRODUCTION, LLC	3364.3'

"Surface Location

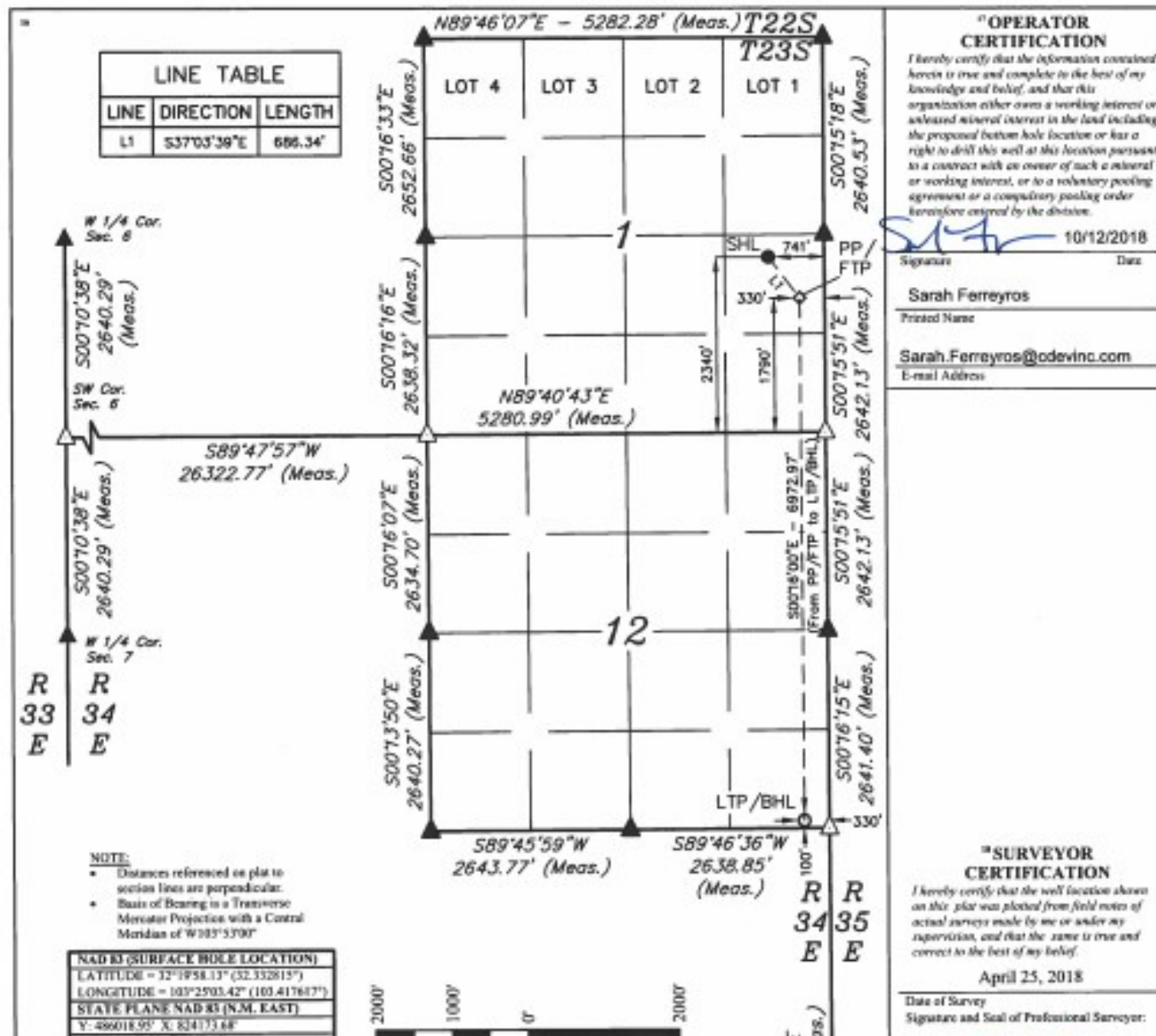
UL or lot no.	Section	Township	Range	Lot Idn	Feet from the	North/South line	Feet from the	East/West line	County
I	I	23S	34E		2340	SOUTH	741	EAST	LEA

"Bottom Hole Location If Different From Surface

UL or lot no.	Section	Township	Range	Lot Idn	Feet from the	North/South line	Feet from the	East/West line	County
P	12	23S	34E		100	SOUTH	330	EAST	LEA

¹² Dedicated Acres	¹³ Joint or Infill	¹⁴ Consolidation Code	¹⁵ Order No.
240			

No allowable will be assigned to this completion until all interests have been consolidated or a non-standard unit has been approved by the division.



District I
1625 N. French Dr., Hobbs, NM 88240
Phone:(575) 393-6161 Fax:(575) 393-0720
District II
811 S. First St., Artesia, NM 88210
Phone:(575) 748-1283 Fax:(575) 748-9720
District III
1000 Rio Brazos Rd., Aztec, NM 87410
Phone:(505) 334-6178 Fax:(505) 334-6170
District IV
1220 S. St Francis Dr., Santa Fe, NM 87505
Phone:(505) 476-3470 Fax:(505) 476-3462

State of New Mexico
Energy, Minerals and Natural Resources
Oil Conservation Division
1220 S. St Francis Dr.
Santa Fe, NM 87505

Form APD Comments

Permit 258616

PERMIT COMMENTS

Operator Name and Address: CENTENNIAL RESOURCE PRODUCTION, LLC [372165] 1001 17th Street, Suite 18 Denver, CO 80202		API Number: 30-025-45266
		Well: DUCK HUNT 1 STATE COM #601H
Created By	Comment	Comment Date
sferreyros	C-102, Gas Capture Plan and Additional Points Required form will be sent via email after submittal.	10/15/2018

District I
 1625 N. French Dr., Hobbs, NM 88240
 Phone:(575) 393-6161 Fax:(575) 393-0720
District II
 811 S. First St., Artesia, NM 88210
 Phone:(575) 748-1283 Fax:(575) 748-9720
District III
 1000 Rio Brazos Rd., Aztec, NM 87410
 Phone:(505) 334-6178 Fax:(505) 334-6170
District IV
 1220 S. St Francis Dr., Santa Fe, NM 87505
 Phone:(505) 476-3470 Fax:(505) 476-3462

State of New Mexico
Energy, Minerals and Natural Resources
Oil Conservation Division
1220 S. St Francis Dr.
Santa Fe, NM 87505

Form APD Conditions

Permit 258616

PERMIT CONDITIONS OF APPROVAL

Operator Name and Address: CENTENNIAL RESOURCE PRODUCTION, LLC [372165] 1001 17th Street, Suite 18 Denver, CO 80202	API Number: 30-025-45266
	Well: DUCK HUNT 1 STATE COM #601H

OCD Reviewer	Condition
pkautz	Will require a directional survey with the C-104
pkautz	1) SURFACE & INTERMEDIATE CASING - Cement must circulate to surface -- 2) PRODUCTION CASING - Cement must tie back into intermediate casing --
pkautz	If cement does not circulate to surface, must run temperature survey or other log to determine top of cement
pkautz	Surface casing must be set 25' below top of Rustler Anhydrite in order to seal off protectable water
pkautz	1)- The Operator is to notify NMOCD by sundry (Form C-103) within ten (10) days of the well being spud 2)- Drilling Sundries Form C-103 (Casing and Cement test are to be submitted within 10 days 3)- Completion Reports & Logs are to be submitted within 45 days 4)- Deviation / Directional Drill Survey are to be filed with or prior to C-104
pkautz	It is the operator's responsibility to monitor cancellation dates of approved APDs. APD's are good for 2 years and may be extended for one year. Only one 1 year extension will be granted if submitted by C-103 before expiration date. After expiration date or after a 1 year extension must submit new APD.
pkautz	Stage Tool - 1) Must notify OCD Hobbs Office prior to running Stage Tool at 575-370-3186 2) If using Stage Tool on Surface casing, Stage Tool must be set greater than 350' from surface and a minimum of 200 feet above surface shoe. 3) When using a Stage Tool on Intermediate or Production Casing Stage must be a minimum of 50 feet below previous casing shoe.