

District I
1625 N. French Dr., Hobbs, NM 88240
Phone:(575) 393-6161 Fax:(575) 393-0720

District II
811 S. First St., Artesia, NM 88210
Phone:(575) 748-1283 Fax:(575) 748-9720

District III
1000 Rio Brazos Rd., Aztec, NM 87410
Phone:(505) 334-6178 Fax:(505) 334-6170

District IV
1220 S. St Francis Dr., Santa Fe, NM 87505
Phone:(505) 476-3470 Fax:(505) 476-3462

State of New Mexico
Energy, Minerals and Natural Resources
Oil Conservation Division
1220 S. St Francis Dr.
Santa Fe, NM 87505

Form C-101
August 1, 2011
Permit 262107

APPLICATION FOR PERMIT TO DRILL, RE-ENTER, DEEPEN, PLUGBACK, OR ADD A ZONE

1. Operator Name and Address MATADOR PRODUCTION COMPANY One Lincoln Centre Dallas, TX 75240		2. OGRID Number 228937
4. Property Code 323136		3. API Number 30-015-45609
5. Property Name SAPPHIRE STATE		6. Well No. 001

7. Surface Location

UL - Lot H	Section 7	Township 26S	Range 29E	Lot Idn	Feet From 2317	N/S Line N	Feet From 481	E/W Line E	County Eddy
---------------	--------------	-----------------	--------------	---------	-------------------	---------------	------------------	---------------	----------------

8. Proposed Bottom Hole Location

UL - Lot E	Section 8	Township 26S	Range 29E	Lot Idn E	Feet From 2325	N/S Line N	Feet From 330	E/W Line W	County Eddy
---------------	--------------	-----------------	--------------	--------------	-------------------	---------------	------------------	---------------	----------------

9. Pool Information

BRUSHY DRAW;DELAWARE	8080
----------------------	------

Additional Well Information

11. Work Type New Well	12. Well Type OIL	13. Cable/Rotary	14. Lease Type State	15. Ground Level Elevation 2908
16. Multiple N	17. Proposed Depth 6600	18. Formation Delaware	19. Contractor	20. Spud Date 1/20/2019
Depth to Ground water		Distance from nearest fresh water well		Distance to nearest surface water

☒ We will be using a closed-loop system in lieu of lined pits

21. Proposed Casing and Cement Program

Type	Hole Size	Casing Size	Casing Weight/ft	Setting Depth	Sacks of Cement	Estimated TOC
Surf	17.5	13.375	54.5	420	319	0
Int1	12.25	9.625	36	2850	1000	0
Prod	8.75	5.5	17	6600	850	2550

Casing/Cement Program: Additional Comments

--

22. Proposed Blowout Prevention Program

Type	Working Pressure	Test Pressure	Manufacturer
Annular	5000	3000	Cameron
Double Ram	10000	5000	Cameron
Pipe	10000	5000	Cameron

23. I hereby certify that the information given above is true and complete to the best of my knowledge and belief. I further certify I have complied with 19.15.14.9 (A) NMAC <input checked="" type="checkbox"/> and/or 19.15.14.9 (B) NMAC <input checked="" type="checkbox"/> if applicable. Signature:	OIL CONSERVATION DIVISION
Printed Name: Electronically filed by Ava Monroe	Approved By: Raymond Podany
Title: Engineering Tech	Title: Geologist
Email Address: amonroe@matadorresources.com	Approved Date: 1/11/2019 Expiration Date: 1/11/2021
Date: 1/10/2019 Phone: 972-371-5218	Conditions of Approval Attached

District I
1625 N. French Dr., Hobbs, NM 88240
Phone: (575) 393-6161 Fax: (575) 393-0720
District II
811 S. First St., Artesia, NM 88210
Phone: (575) 748-1283 Fax: (575) 748-9720
District III
1000 Rio Brazos Road, Aztec, NM 87410
Phone: (505) 334-6178 Fax: (505) 334-6170
District IV
1220 S. St. Francis Dr., Santa Fe, NM 87505
Phone: (505) 476-3460 Fax: (505) 476-3462

State of New Mexico
Energy, Minerals & Natural Resources
Department
OIL CONSERVATION DIVISION
1220 South St. Francis Dr.
Santa Fe, NM 87505

FORM C-102
Revised August 1, 2011
Submit one copy to appropriate
District Office

☐ AMENDED REPORT

WELL LOCATION AND ACREAGE DEDICATION PLAT

¹ API Number		² Pool Code	³ Pool Name
		8080	Brushy Draw, Delaware
⁴ Property Code	⁵ Property Name		⁶ Well Number
228937	SAPPHIRE STATE		1
⁷ GRID No.	⁸ Operator Name		⁹ Elevation
	MATADOR PRODUCTION COMPANY		2908'

¹⁰Surface Location

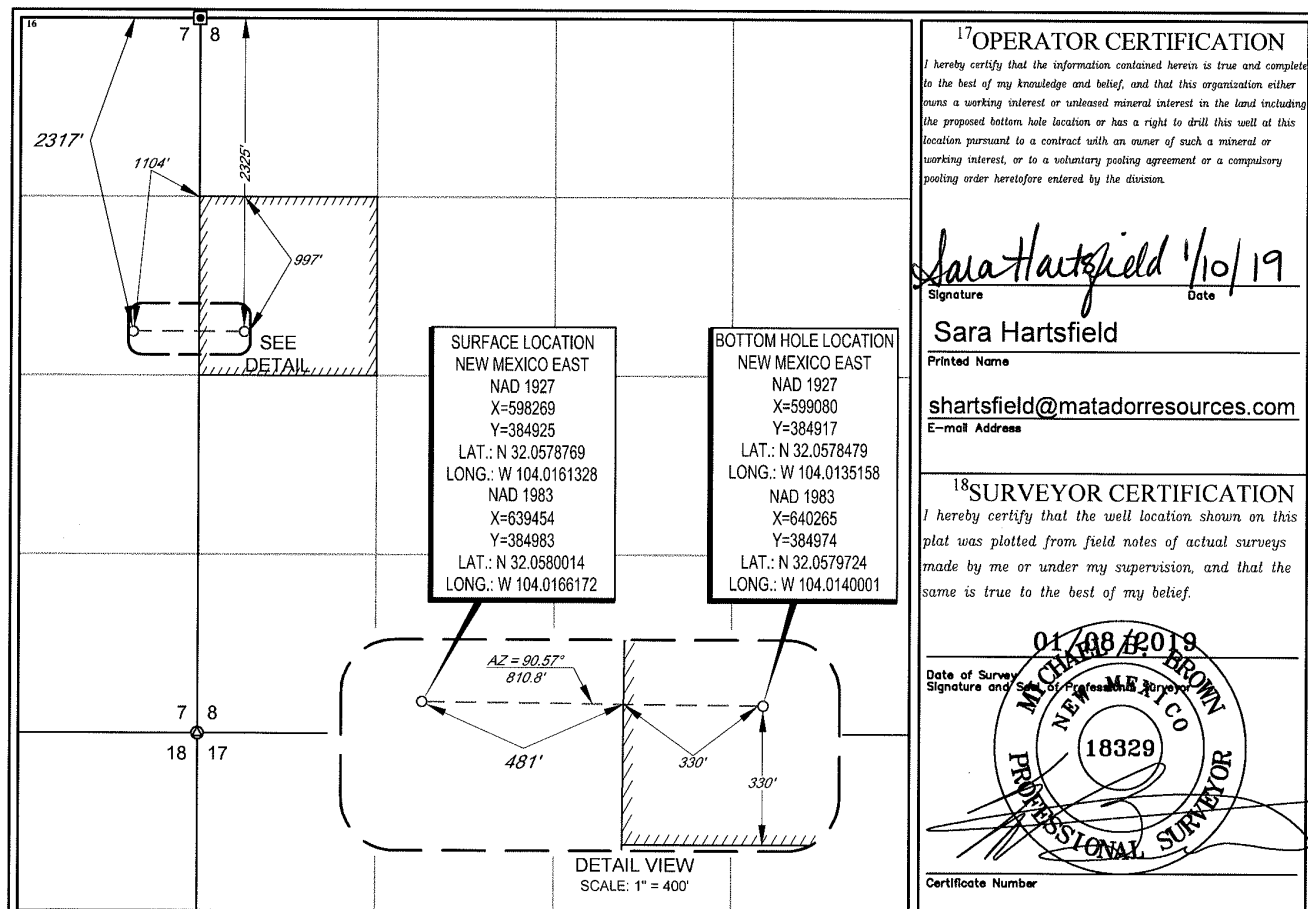
UL or lot no.	Section	Township	Range	Lot Idn	Feet from the	North/South line	Feet from the	East/West line	County
H	7	26-S	29-E	-	2317'	NORTH	481'	EAST	EDDY

¹¹Bottom Hole Location If Different From Surface

UL or lot no.	Section	Township	Range	Lot Idn	Feet from the	North/South line	Feet from the	East/West line	County
E	8	26-S	29-E	-	2325'	NORTH	330'	WEST	EDDY

¹² Dedicated Acres	¹³ Joint or Infill	¹⁴ Consolidation Code	¹⁵ Order No.
40			

No allowable will be assigned to this completion until all interests have been consolidated or a non-standard unit has been approved by the division.



District I
1625 N. French Dr., Hobbs, NM 88240
Phone:(575) 393-6161 Fax:(575) 393-0720
District II
811 S. First St., Artesia, NM 88210
Phone:(575) 748-1283 Fax:(575) 748-9720
District III
1000 Rio Brazos Rd., Aztec, NM 87410
Phone:(505) 334-6178 Fax:(505) 334-6170
District IV
1220 S. St Francis Dr., Santa Fe, NM 87505
Phone:(505) 476-3470 Fax:(505) 476-3462

State of New Mexico
Energy, Minerals and Natural Resources
Oil Conservation Division
1220 S. St Francis Dr.
Santa Fe, NM 87505

Form APD Comments

Permit 262107

PERMIT COMMENTS

Operator Name and Address: MATADOR PRODUCTION COMPANY [228937] One Lincoln Centre Dallas, TX 75240		API Number: 30-015-45609
		Well: SAPPHIRE STATE #001

Created By	Comment	Comment Date
bfancher	This well's surface hole will be located in Section 7, Township 26 South, Range 29 East at 2,317' FNL and 481' FEL. It's BHL will be in Section 8, Township 26 South, Range 29 East at 2,325' FNL and 330' FWL. This well's Penetration Point, First Take Point, and Last Take Point will all be located at the same distance as measured from the surface (i.e., at the bottom of the hole).	1/10/2019

District I
1625 N. French Dr., Hobbs, NM 88240
Phone:(575) 393-6161 Fax:(575) 393-0720
District II
811 S. First St., Artesia, NM 88210
Phone:(575) 748-1283 Fax:(575) 748-9720
District III
1000 Rio Brazos Rd., Aztec, NM 87410
Phone:(505) 334-6178 Fax:(505) 334-6170
District IV
1220 S. St Francis Dr., Santa Fe, NM 87505
Phone:(505) 476-3470 Fax:(505) 476-3462

State of New Mexico
Energy, Minerals and Natural Resources
Oil Conservation Division
1220 S. St Francis Dr.
Santa Fe, NM 87505

Form APD Conditions

Permit 262107

PERMIT CONDITIONS OF APPROVAL

Operator Name and Address: MATADOR PRODUCTION COMPANY [228937] One Lincoln Centre Dallas, TX 75240		API Number: 30-015-45609
		Well: SAPPHIRE STATE #001
OCD Reviewer	Condition	
rpodany	Will require a directional survey with the C-104	
rpodany	Cement is required to circulate on both surface and intermediate1 strings of casing	