

District I
1625 N. French Dr., Hobbs, NM 88240
Phone:(575) 393-6161 Fax:(575) 393-0720

District II
811 S. First St., Artesia, NM 88210
Phone:(575) 748-1283 Fax:(575) 748-9720

District III
1000 Rio Brazos Rd., Aztec, NM 87410
Phone:(505) 334-6178 Fax:(505) 334-6170

District IV
1220 S. St Francis Dr., Santa Fe, NM 87505
Phone:(505) 476-3470 Fax:(505) 476-3462

State of New Mexico
Energy, Minerals and Natural Resources
Oil Conservation Division
1220 S. St Francis Dr.
Santa Fe, NM 87505

Form C-101
August 1, 2011
Permit 267442

APPLICATION FOR PERMIT TO DRILL, RE-ENTER, DEEPEN, PLUGBACK, OR ADD A ZONE

1. Operator Name and Address Ridge Runner Resources Operating, LLC 1004 N. Big Spring Street Midland, TX 79701		2. OGRID Number 373013
4. Property Code 325672		3. API Number 30-025-45973
5. Property Name PERSEUS 0235 STATE COM		6. Well No. 001H

7. Surface Location

UL - Lot	Section	Township	Range	Lot Idn	Feet From	N/S Line	Feet From	E/W Line	County
M	2	20S	35E	M	100	S	330	W	Lea

8. Proposed Bottom Hole Location

UL - Lot	Section	Township	Range	Lot Idn	Feet From	N/S Line	Feet From	E/W Line	County
D	35	19S	35E	D	100	N	330	W	Lea

9. Pool Information

PEARL;BONE SPRING, SOUTH	49685
--------------------------	-------

Additional Well Information

11. Work Type New Well	12. Well Type OIL	13. Cable/Rotary	14. Lease Type State	15. Ground Level Elevation 3672
16. Multiple N	17. Proposed Depth 20455	18. Formation 2nd Bone Spring Sand	19. Contractor	20. Spud Date
Depth to Ground water		Distance from nearest fresh water well		Distance to nearest surface water

☒ We will be using a closed-loop system in lieu of lined pits

21. Proposed Casing and Cement Program

Type	Hole Size	Casing Size	Casing Weight/ft	Setting Depth	Sacks of Cement	Estimated TOC
Surf	17.5	13.375	48	1900	1400	0
Int1	12.25	9.625	36	5800	1200	0
Prod	8.75	5.5	17	20455	2750	5300

Casing/Cement Program: Additional Comments

--

22. Proposed Blowout Prevention Program

Type	Working Pressure	Test Pressure	Manufacturer
Annular	3000	1500	
Double Ram	5000	3000	

23. I hereby certify that the information given above is true and complete to the best of my knowledge and belief. I further certify I have complied with 19.15.14.9 (A) NMAC <input checked="" type="checkbox"/> and/or 19.15.14.9 (B) NMAC <input checked="" type="checkbox"/> if applicable. Signature: _____ Printed Name: Electronically filed by Michelle Sena Title: _____ Email Address: msena@3ROperating.com Date: 5/16/2019 Phone: 432-684-7877	OIL CONSERVATION DIVISION Approved By: Paul F Kautz Title: Geologist Approved Date: 5/17/2019 Expiration Date: 5/17/2021 Conditions of Approval Attached
---	--

District I
1625 N. French Dr., Hobbs, NM 88240
Phone: (575) 393-6161 Fax: (575) 393-0720
District II
811 S. First St., Artesia, NM 88210
Phone: (575) 748-1283 Fax: (575) 748-9720
District III
1000 Rio Brazos Road, Aztec, NM 87410
Phone: (505) 334-6178 Fax: (505) 334-6170
District IV
1220 S. St. Francis Dr., Santa Fe, NM 87505
Phone: (505) 476-3460 Fax: (505) 476-3462

State of New Mexico
Energy, Minerals & Natural Resources Department
OIL CONSERVATION DIVISION
1220 South St. Francis Dr.
Santa Fe, NM 87505

Form C-102
Revised August 1, 2011
Submit one copy to appropriate
District Office

☐ AMENDED REPORT

WELL LOCATION AND ACREAGE DEDICATION PLAT

¹ API Number		² Pool Code		³ Pool Name	
⁴ Property Code		⁵ Property Name PERSEUS 0235 STATE COM			⁶ Well Number 1H
⁷ OGRID NO.		⁸ Operator Name RIDGE RUNNER RESOURCES OPERATING, LLC			⁹ Elevation 3672'

¹⁰ Surface Location

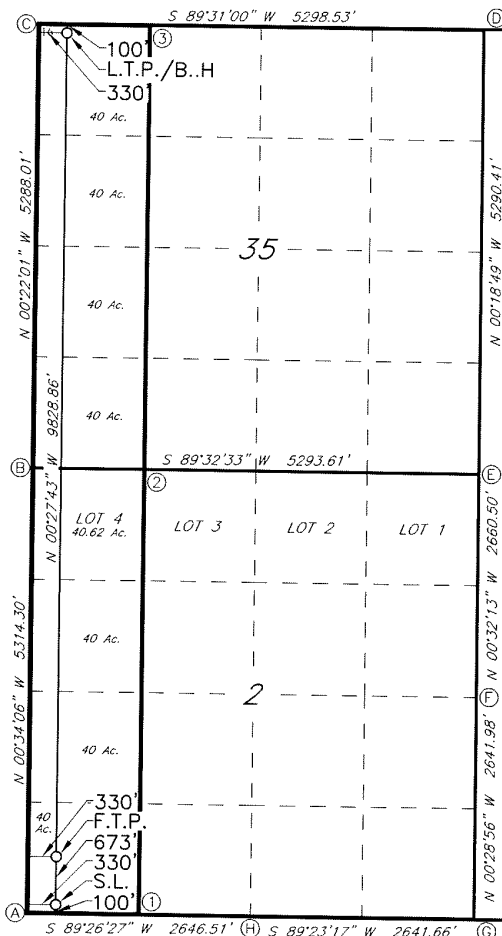
UL or lot no.	Section	Township	Range	Lot Idn	Feet from the	North/South line	Feet From the	East/West line	County
M	2	20S	35E		100	SOUTH	330	WEST	LEA

¹¹ Bottom Hole Location If Different From Surface

UL or lot no.	Section	Township	Range	Lot Idn	Feet from the	North/South line	Feet from the	East/West line	County
D	35	19S	35E		100	NORTH	330	WEST	LEA

¹² Dedicated Acres	¹³ Joint or Infill	¹⁴ Consolidation Code	¹⁵ Order No.

No allowable will be assigned to this completion until all interest have been consolidated or a non-standard unit has been approved by the division.



GEODETTIC DATA
NAD 83 GRID - NM EAST

SURFACE LOCATION
N 581456.6 - E 817867.4

LAT: 32.5952682° N
LONG: 103.4354329° W

FIRST TAKE POINT (F.T.P.)
N 582029.6 - E 817861.8

LAT: 32.5968430° N
LONG: 103.4354355° W

LAST TAKE POINT (L.T.P.)
BOTTOM HOLE (B.H.)

N 591856.4 - E 817782.6

LAT: 32.6238529° N
LONG: 103.4354233° W

CORNER DATA
NAD 83 GRID - NM EAST

A: CALCULATED CORNER
N 581353.5 - E 817538.5

B: CALCULATED CORNER
N 586666.6 - E 817485.8

C: FOUND 1/2" IRON PIPE
N 591953.6 - E 817452.0

D: FOUND 1/2" REBAR
N 591998.3 - E 822749.4

E: CALCULATED CORNER
N 586708.9 - E 822778.4

F: FOUND BRASS CAP "1912"
N 584049.0 - E 822803.3

G: FOUND 3" PIPE
N 581407.5 - E 822825.5

H: FOUND BRASS CAP "1912"
N 581379.3 - E 820184.5

CALCULATED POINTS

1: N 581366.4 - E 818861.5
2: N 586677.2 - E 818809.0
3: N 591964.8 - E 818776.3

¹⁷ OPERATOR CERTIFICATION

I hereby certify that the information contained herein is true and complete to the best of my knowledge and belief, and that this organization either owns a working interest or unleased mineral interest in the land including the proposed bottom hole location or has a right to drill this well at this location pursuant to a contract with an owner of such a mineral or working interest, or to a voluntary pooling agreement or a compulsory pooling order heretofore entered by the division.

Signature: *Michelle Sena* Date: *5/15/19*

Printed Name: *Michelle Sena*

E-mail Address: *msena@3rperating.com*

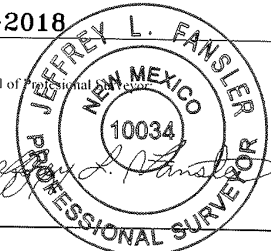
¹⁸ SURVEYOR CERTIFICATION

I hereby certify that the well location shown on this plat was plotted from field notes of actual surveys made by me or under my supervision, and that the same is true and correct to the best of my belief.

12-14-2018

Date of Survey

Signature and Seal of Professional Surveyor



10034

Certificate Number

REV: 5-15-19 MOVE BHL

Job No.: LS18121350R

District I
 1625 N. French Dr., Hobbs, NM 88240
 Phone:(575) 393-6161 Fax:(575) 393-0720

District II
 811 S. First St., Artesia, NM 88210
 Phone:(575) 748-1283 Fax:(575) 748-9720

District III
 1000 Rio Brazos Rd., Aztec, NM 87410
 Phone:(505) 334-6178 Fax:(505) 334-6170

District IV
 1220 S. St Francis Dr., Santa Fe, NM 87505
 Phone:(505) 476-3470 Fax:(505) 476-3462

State of New Mexico

Energy, Minerals and Natural Resources

Oil Conservation Division

1220 S. St Francis Dr.

Santa Fe, NM 87505

Form APD Comments

Permit 267442

PERMIT COMMENTS

Operator Name and Address: Ridge Runner Resources Operating, LLC [373013] 1004 N. Big Spring Street Midland, TX 79701		API Number: 30-025-45973
		Well: PERSEUS 0235 STATE COM #001H
Created By	Comment	Comment Date
msena	THRESHOLD DEVELOPMENT COMPANY,STATE 2 M #001,30-025-34807 is in the same Quarter Quarter but has since been plugged	5/15/2019

District I
 1625 N. French Dr., Hobbs, NM 88240
 Phone:(575) 393-6161 Fax:(575) 393-0720
District II
 811 S. First St., Artesia, NM 88210
 Phone:(575) 748-1283 Fax:(575) 748-9720
District III
 1000 Rio Brazos Rd., Aztec, NM 87410
 Phone:(505) 334-6178 Fax:(505) 334-6170
District IV
 1220 S. St Francis Dr., Santa Fe, NM 87505
 Phone:(505) 476-3470 Fax:(505) 476-3462

Form APD Conditions

State of New Mexico
Energy, Minerals and Natural Resources
Oil Conservation Division
1220 S. St Francis Dr.
Santa Fe, NM 87505

Permit 267442

PERMIT CONDITIONS OF APPROVAL

Operator Name and Address: Ridge Runner Resources Operating, LLC [373013] 1004 N. Big Spring Street Midland, TX 79701	API Number: 30-025-45973
	Well: PERSEUS 0235 STATE COM #001H

OCD Reviewer	Condition
pkautz	Will require a directional survey with the C-104
pkautz	1) SURFACE & INTERMEDIATE CASING - Cement must circulate to surface -- 2) PRODUCTION CASING - Cement must tie back into intermediate casing --
pkautz	If cement does not circulate to surface, must run temperature survey or other log to determine top of cement
pkautz	Surface casing must be set 25' below top of Rustler Anhydrite in order to seal off protectable water
pkautz	1)- The Operator is to notify NMOCD by sundry (Form C-103) within ten (10) days of the well being spud 2)- Drilling Sundries Form C-103 (Casing and Cement test are to be submitted within 10 days 3)- Completion Reports & Logs are to be submitted within 45 days 4)- Deviation / Directional Drill Survey are to be filed with or prior to C-104
pkautz	It is the operator's responsibility to monitor cancellation dates of approved APDs. APD's are good for 2 years and may be extended for one year. Only one 1 year extension will be granted if submitted by C-103 before expiration date. After expiration date or after a 1 year extension must submit new APD.
pkautz	Stage Tool 1) Must notify OCD Hobbs Office prior to running Stage Tool at 5753703186 2) If using Stage Tool on Surface casing, Stage Tool must be set greater than 350' from surface and a minimum of 200 feet above surface shoe. 3) When using a Stage Tool on Intermediate or Production Casing Stage must be a minimum of 50 feet below previous casing shoe.